

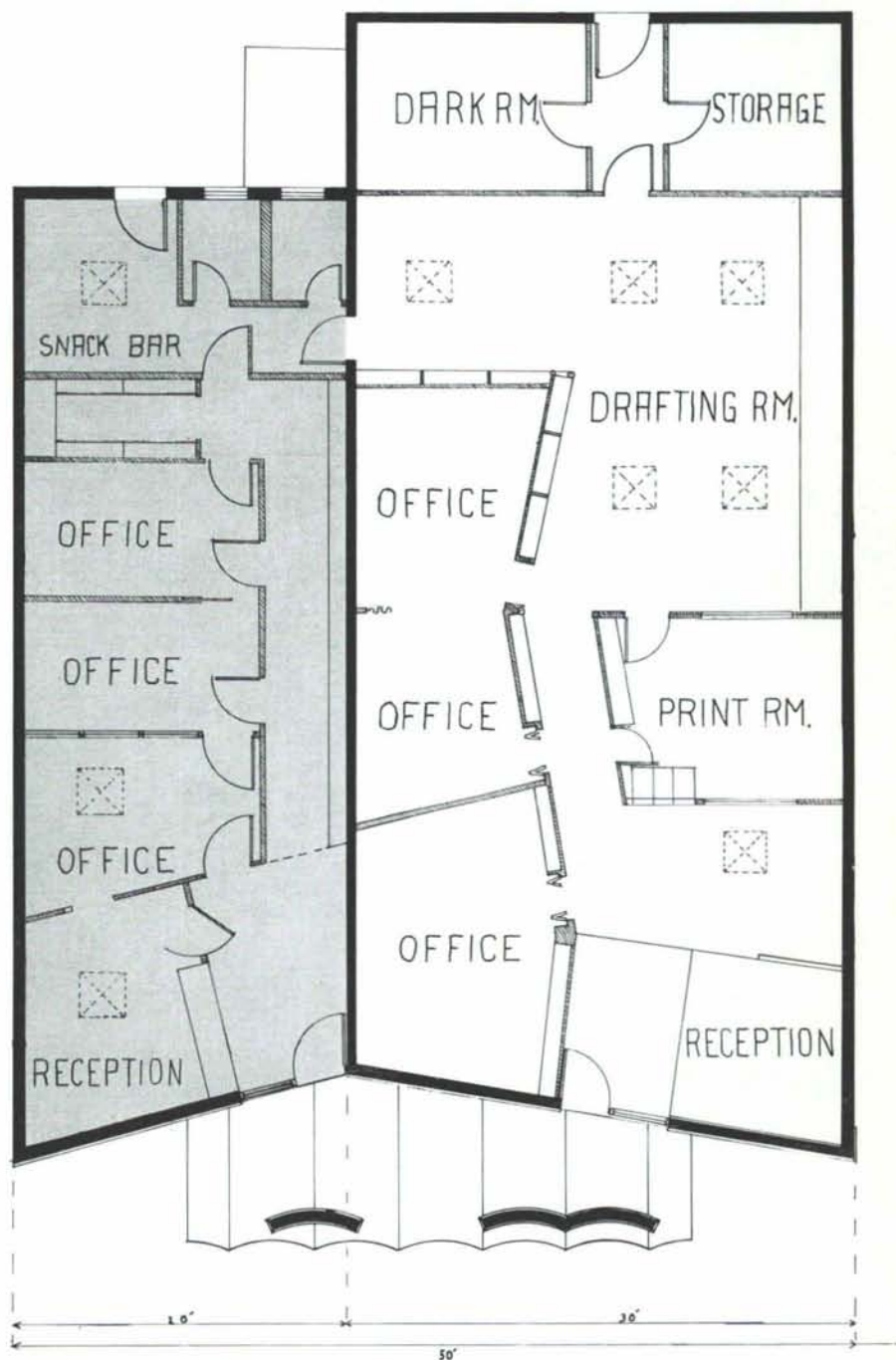


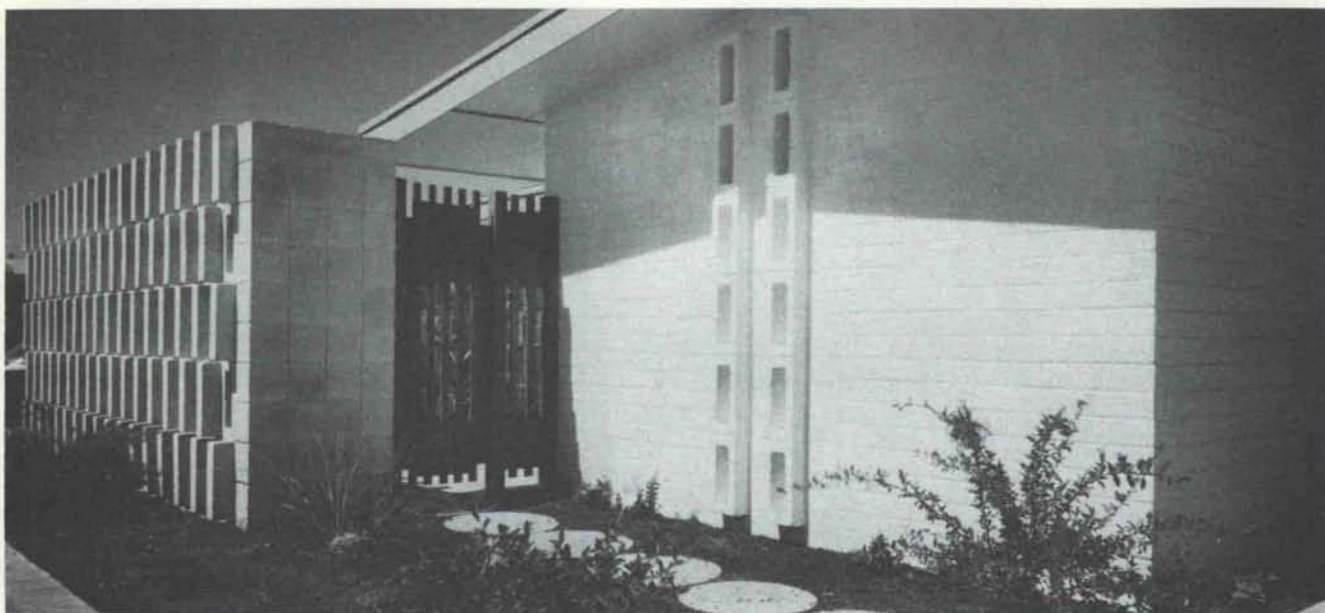
## THE PRESIDENT'S NEW OFFICE

THE ARCHITECTURE  
STUDIO of KERN SMITH

Constructed in the winter of 1961, the Carlsbad office of Kern Smith, President of the New Mexico Chapter of AIA, provides a 2,000 square foot architectural office as well as rentable office space of 1,100 square feet. The plan is integrated so that the two offices share a coffee room and toilet and heating facilities.

The straightforward concrete block structure is enlivened by a playful portico of scalloped pylons faced with ceramic tile. The portico roof is fronted by a steel fascia also with a scalloped design. The building's facade is covered with fulget wall tile. The sharp shadows of these undulating forms create playful shapes against the rectangular mass of the structure.





Dickson Skidmore, Architect, A.I.A., El Paso, Texas

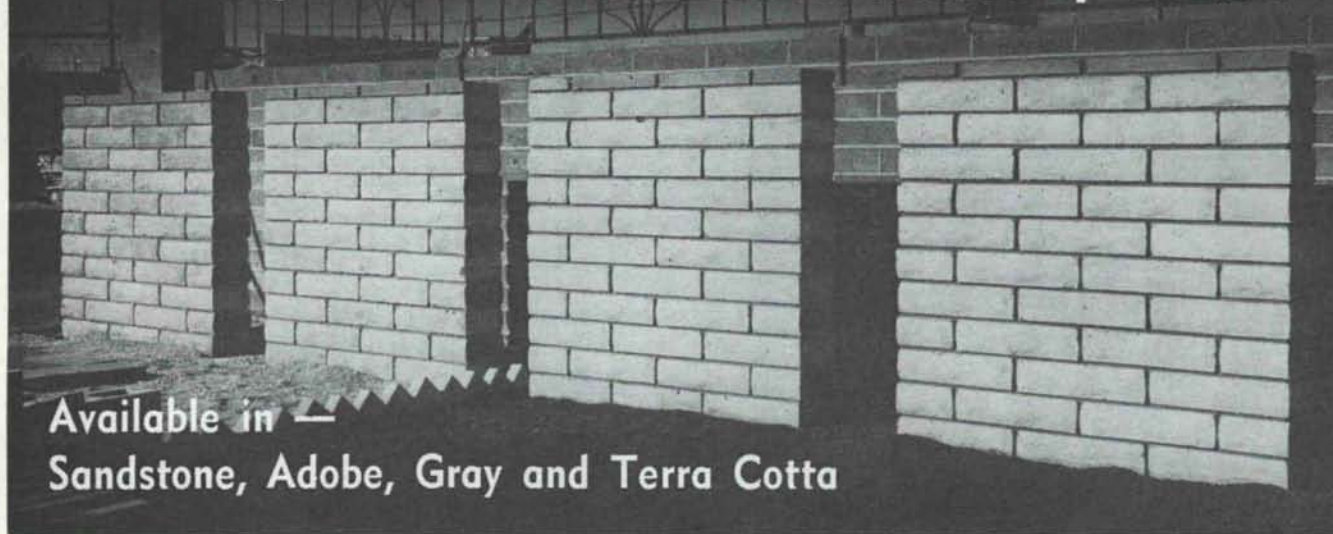
Willis Schoemaker, Builder, El Paso, Texas

... award-winning Horizon Home using  
"Cameo Concrete Masonry Units"

THE ATLAS BUILDING PRODUCTS CO.  
200 N. GLENWOOD DRIVE • EL PASO, TEXAS



Introducing the new **"SLUMPROK"** created by **CREGO**



Available in —  
Sandstone, Adobe, Gray and Terra Cotta

A new masonry product (Hollowcore)  
allowing a double faced wall  
with *soft shadows and highlights*.

These blocks meet and surpass  
all ASTM and minimum code requirements

**CREGO BLOCK CO., Inc.**  
6026 Second NW DI 4-3475  
Albuquerque, New Mexico

Makers of the finest autoclave  
products in New Mexico