

Walt Whitman Elementary School  
Media Center Addition  
Littleton, Colorado

**Michael Brendle  
Architects  
Denver, Colorado**

**Jury Comments**

This media center is an austere complement to the existing school building, yet it possesses some of the playfulness of childhood.

The modular, straightforward structural and mechanical expression, the suspended ceiling elements, and the window placements invite, by space and light, little people to cluster for storytelling.

This is a successful example of high-tech architecture brought down to a child's understanding.

**Project Data**

**Client**

*Littleton Public Schools*

**General Contractor**

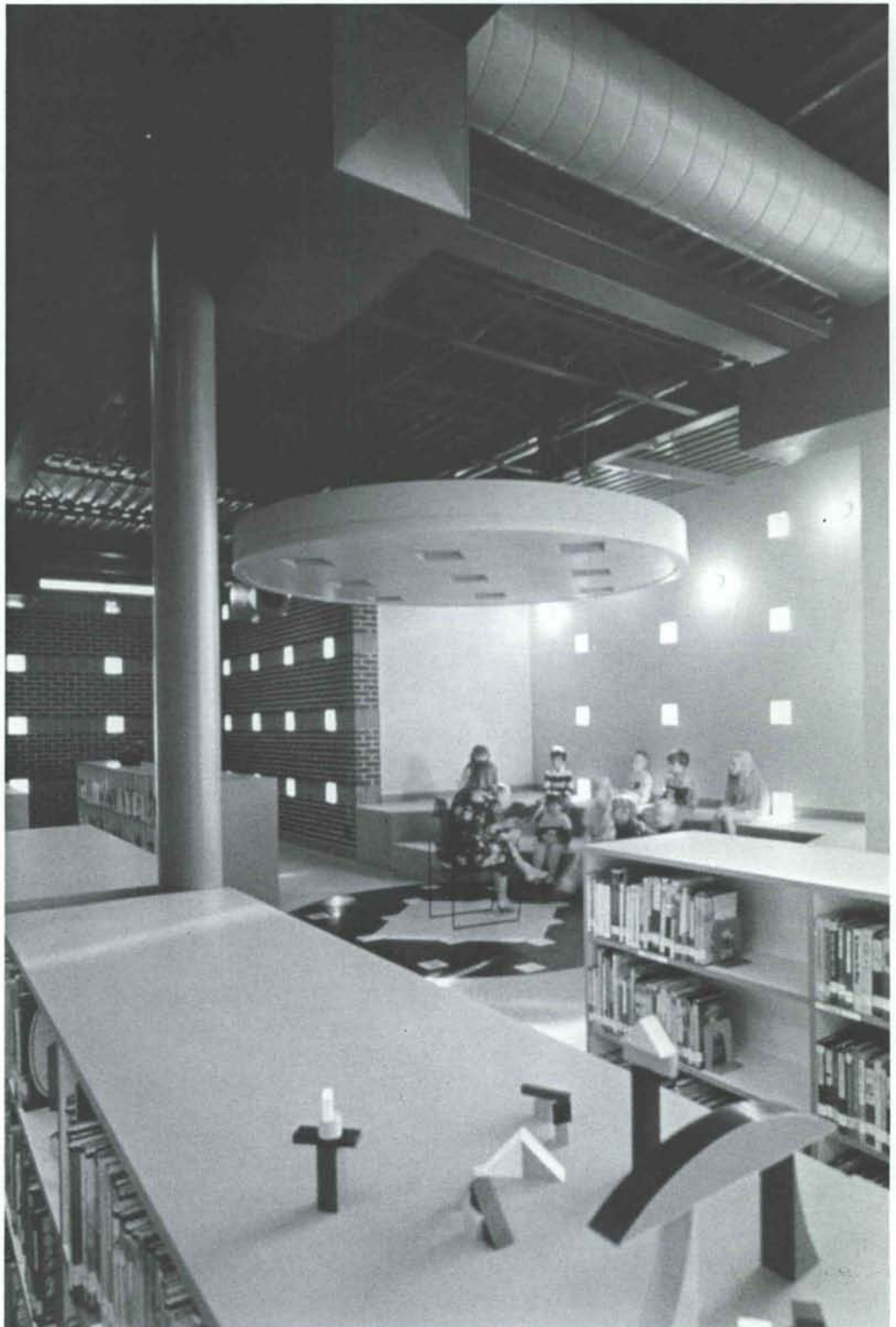
*Weaver General Construction, Inc.*

**Structural Engineer**

*Neujahr and Gorman*

**Mechanical/Electrical Engineer**

*Gordon, Gumeson and Associates, Inc.*



AWARD FOR EXCELLENCE  
IN ARCHITECTURE