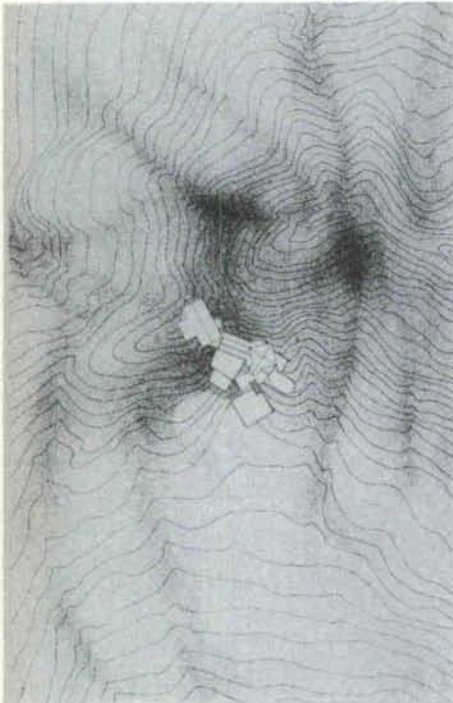


WESTERN MOUNTAIN REGION AWARDS

Award of Honor
Antoine Predock, FAIA
Architect

Treaster Gray House
Tesuque, New Mexico



The Treaster / Gray house unfolds as a fragmented village of rooms as it climbs the flank of a ridge.

The ceremonial approach to the house from a distance-circuitous dirt road amidst aromatic piñon / juniper trees; distant views of the vernacular metal roofed bedroom tower rising above huddled pieces of the house-each piece a different frozen sunset color-sets the stage for this "house as a theatre" for the musician owners.

The processional, sequential, places then experienced on ascending the site, through the house, culminate in the living room (performance space) breaking like a wave over the ridge, high above the Tesuque Valley.

The simple, archetypal pieces of the house resemble the accredited villages of Northern New Mexico. Colliding shifting axes of the six fragments result from relationships to topography, views and the ceremonial path up the hillside.

Imagining an evening gathering, the visitor arrives in a parking placita then climbs a series of steps on axis with the stair tower, enters into a space with views channeled toward the Jemez mountains and the lights of Los Alamos, passes along a gallery / greenhouse, ascends through a stage-like proscenium opening, then emerges as an "actor" on the living room stairs at the same time witnessing a musical performance below joined by the audience on the balcony / loft above. The theatre-diagram aspect of the house simultaneously addresses pragmatic issues of the owner's day to day lives. But the romance of the site overlayed by the artistic persuasion of the Treaster / Gray's produces an experiential sequence going hand in hand with, and at the same time transcendent of program.

Varying shades of stucco on frame construction. Galvanized metal roofing. Passive solar greenhouse distributes warm air to other zones.

Construction during 1984-85.



Treaster Gray House Tesuque, New Mexico

Client:
Byron L. Treaster
Jane Gray

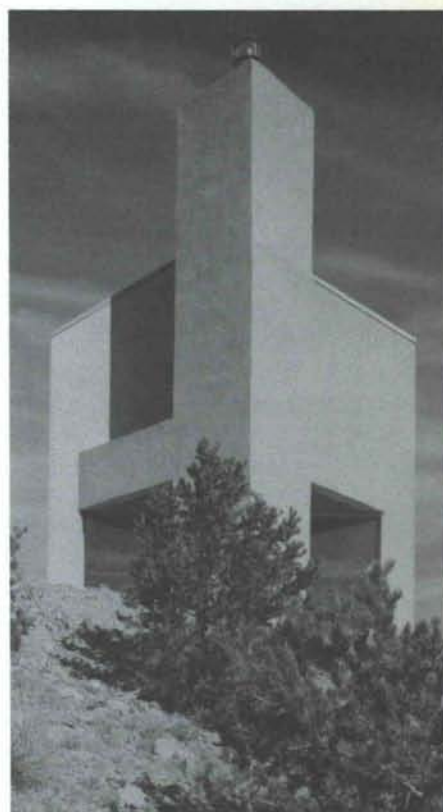
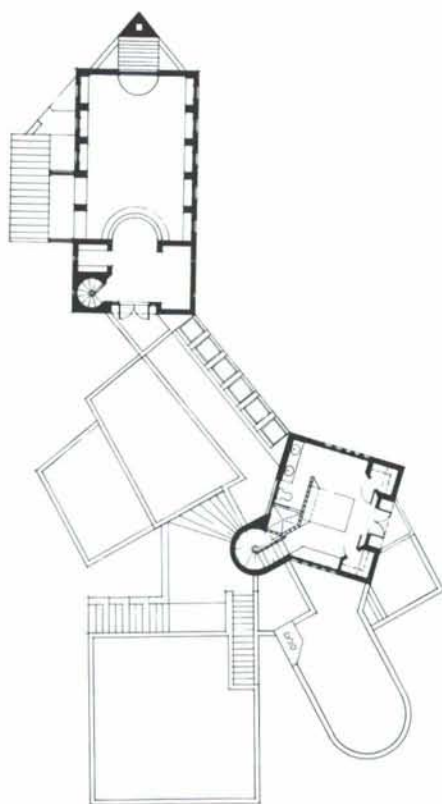
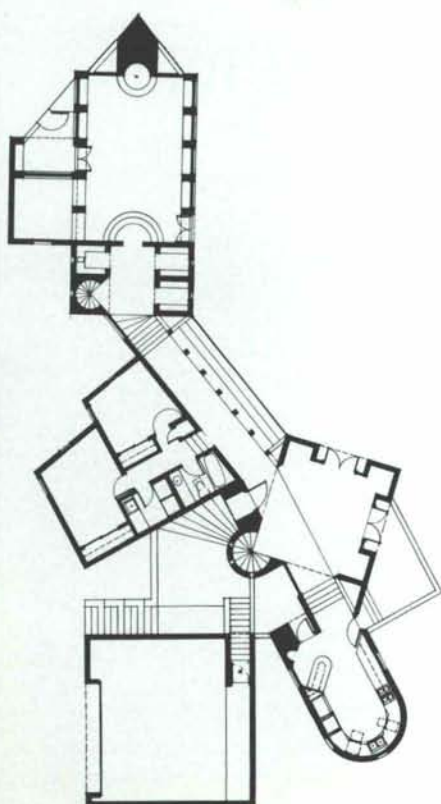
Architect:
Antoine Predock, FAIA
Albuquerque, New Mexico

Project Architect:
Jon Anderson

Mechanical Engineer:
Don Felts

Photographs:
© Robert Reck

General Contractor:
Blue Raven Construction Works, Inc.



PERSPECTIVES OF INNOVATION

What form innovation
takes depends entirely
on the point of view.

At Summit,
we continue to
solve old problems in
new and creative ways.

It's a never-ending
challenge... shaping
everything we build.



SUMMITCONSTRUCTION

Albuquerque, New Mexico
505/842-8113

COPPER SQUARE



ARCHITECTURAL
WOODWORK
INSTITUTE

NEW MEXICO CHAPTER ARCHITECTURAL WOODWORK INSTITUTE

P.O. Box 36041
Albuquerque, NM 87176-6041

ACTIVE MEMBERS

LIVINGWARE CABINETS, INC.
9700 Trumbull S.E.
Albuquerque, NM 87123
(505) 294-5664

CHATEAU MILL
3417 Girard N.E.
Albuquerque, NM 87107
(505) 884-2066

ARCHITECTURAL WOODWORKING
P.O. Box 9043
Albuquerque, NM 87119
(505) 242-8774

DODD CABINET COMPANY
P.O. Box 21339
Albuquerque, NM 87154
(505) 293-7679

SOUTHWEST CUSTOM CABINETS, INC.
514 Carmony Rd., N.E.
Albuquerque, NM 87107
(505) 242-1173

CREATIVE CARPENTRY
P.O. Box 40008
Albuquerque, NM 87196
(505) 243-4605

BRADBURY & STAMM CONSTRUCTION CO., INC.
P.O. Box 25027
Albuquerque, NM 87125
(505) 765-1200

CABINETS BY LUCERO, INC.
115 North Prince
Clovis, NM 88101
(505) 763-6953

ROMBIN CONSTRUCTION COMPANY
6213 Cole Lane S.W.
Albuquerque, NM 87105
(505) 867-4440

FENESTRA
206 Atrisco Drive S.W.
Albuquerque, NM 87120
(505) 831-0499

ASSOCIATE MEMBERS

NEW MEXICO SUPPLY CO.
4606 McLeod N.E.
Albuquerque, NM 87109
(505) 881-9588

KITTS ENTERPRISES, INC.
P.O. Box 25465
Albuquerque, NM 87125
(505) 345-8135

FRANK PAXTON LUMBER CO.
P.O. Box 25125
Albuquerque, NM 87125
(505) 243-7891

WILLIAMS MACHINERY
3100 Pan American Fwy. N.E.
Albuquerque, NM 87109
(505) 292-9000

FRANCIS WAGNER CO.
3425 Girard, N.E.
Albuquerque, NM 87107
(505) 884-2431

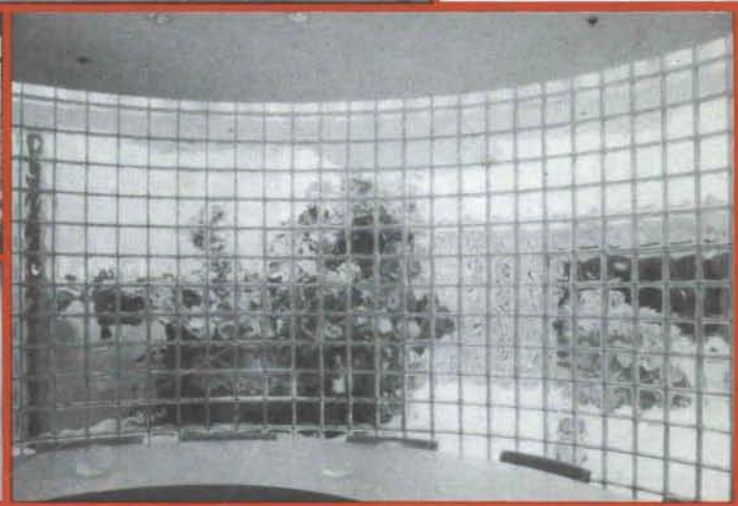
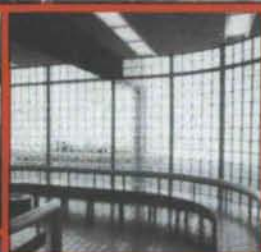
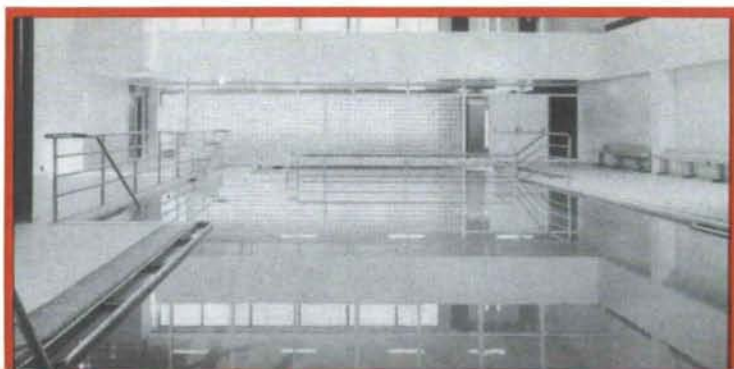
SUNWEST SURFACES, INC.
2512 Madison, N.E.
Albuquerque, NM 87110
(505) 884-5555

How do you know that our concept of quality matches yours? We wrote the book on it -**The Quality Standards Manual.**

Our members are pleased to provide assistance by answering questions concerning construction methods, procedures and interpreting specifications.

PITTSBURGH CORNING
PCGLASSBLOCK®
PRODUCTS

Glass Block for the 80's ...design with confidence



DISTRIBUTORS FOR THE STATE OF NEW MEXICO
WAREHOUSED IN ALBUQUERQUE



CREGO BLOCK CO.

P.O. BOX 6466
ALBUQUERQUE, N.M. 87197

6026 SECOND STREET, N.W.
(505) 345-4451



TO AVOID COSTLY
POST-CONSTRUCTION
INSTALLATION AND
HEADACHES...



VIDEO SCAN

■ 15 years in
security
surveillance

■ Oldest
continuous
business of its
kind in NM

CALL VIDEO-SCAN
BEFORE YOUR PROJECT
LEAVES THE DRAWING
BOARD!



**ENGINEERS/
ARCHITECTS —
CALL TODAY
FOR FREE
CONSULTATION:**
292-2264
1621 Eubank Blvd NE
ABQ., NM 87112

INTERIOR LANDSCAPING DESIGN
LEASING • MAINTENANCE



plant designs

The Professional Plant People
(505) 888-5821



BUILDERS BLOCK

Members:
New Mexico Concrete
Masonry Association
National Concrete
Masonry Association

**Quality Concrete Masonry Products
and many allied building materials.
Serving New Mexico and West Texas
for over a quarter of a century.**

P.O. Box 1633
Roswell, NM 88201
505/622-1321

P.O. Drawer FF
Las Cruces, NM 88001
505/524-3633

Telephone
El Paso
915/532-9695

AGP

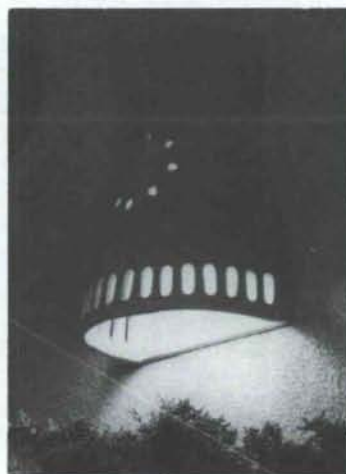
*Home of the
Concrete Giant!*



ALBUQUERQUE GRAVEL PRODUCTS COMPANY

**DEDICATED TO QUALITY
AND SERVICE**

600 John Street S.E. Tel. (505) 242-5265
P.O. Box 829 Albuquerque, NM 87103



SANTA FE LIGHTS

ARCHITECTURAL
LIGHTING FIXTURES
IN SOUTHWEST
ADOBE STYLE
INDOOR & OUTDOOR
WALL, CEILING AND
HANGING LIGHTS,
CHANDELIERS &
GARDEN LIGHTS

FRANK WILLETT / THE SANTA FE POTTERY
323 Guadalupe Street, Santa Fe, New Mexico 87501
(505) 471-0076 / (505) 983-9011

Beauty & Performance...

The Perfect Pair!

Weather Shield offers you both in the line of quality wood windows and steel insulated entry systems.



All Weather Protection - Always!



Western Building Supply Co., Inc.

4201 Los Angeles, NE

Albuquerque, New Mexico 87113

(505) 823-2500



Mercedes-Benz



- Authorized sales and 24 hour service
- Large inventory
- '86 Mercedes-Benz leases

Available from
\$399.99
Per month

**ROSWELL
IMPORTED CARS,
INC.**

204 East College
Roswell, NM 88201
(505) 622-6275



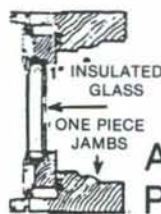
DELABRO MILLWORK

UNMATCHED

Come into a GLASS-RITE showroom and we'll set a DELABRO window side by side any, **any** window and compare feature to feature.

When we're done you'll know why DELABRO windows are the best windows money can buy. If you're already aware of DELABRO'S superior quality, but think they cost more than other top of the line windows, then you haven't been quoted prices since GLASS-RITE became the DELABRO distributor for New Mexico.

DELABRO UNMATCHED IN QUALITY
MADE AFFORDABLE BY GLASS-RITE



Available in
Pine or Oak

Available with Heat Mirror
Transparent Insulation.

**HEAT
MIRROR**

HEAT MIRROR™ is a trade mark
of the Southwall Corporation

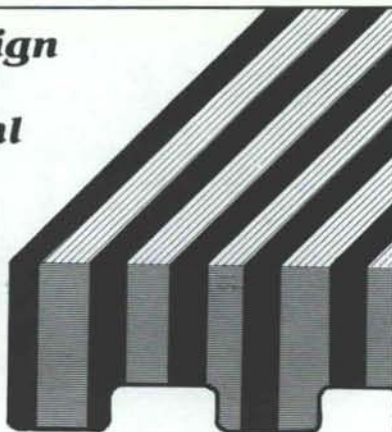
GLASS-RITE™
ENERGY SAVING SYSTEMS

In Albuquerque
8307 CENTRAL AVE.
268-1001

In Santa Fe
3662 CERRILLOS RD.
471-1760

**Custom design
for today's
architectural
needs.**

**Growing With
Albuquerque
Since 1947**



- **Canvas Awnings**

Commercial & residential. Custom designed & fabricated

- **Upholstering**

Commercial, office, patio, auto, trucks, RV's

- **Tent Rentals / Sales / Repairs**

Party canopies, big tops, camping

RADER
AWNING & UPHOLSTERING, INC.
915 4th Street NW
Albuquerque, New Mexico 87102
505-243-4523

**AN UNCOMPROMISING CHOICE...
between a fireplace and a
woodstove**

ELEGANCE

Southwestern to Contemporary, BIS integrates easily into your interior decor.

EFFICIENCY

Tested to 67% net efficiency, BIS heats like an air-tight woodstove, far surpassing the 0-20% of traditional masonry and factory built fireplaces.

CLEAN BURNING

BIS is the only zero clearance Built In Stove to pass the stringent 1988 Oregon emissions standards!

For details and our 16 page color BIS Designer Brochure, visit us...



THE FIREBIRD

2626 SAN PEDRO, N.E., ALBUQUERQUE, N.M. 87106
1814 SECOND ST. SANTA FE, N.M. 87505

884-1361
983-5264



KITTS ENTERPRISES INC.

5815 EDITH BOULEVARD, NE
ALBUQUERQUE, N.M. 87125

Alder, Ash, Basswood, Birch, Aromatic Cedar, Spanish Cedar, Cherry, Honduras Mahogany, Phillipine Mahogany, Maple, Red Oak, White Oak, Ponderosa Pine, Sugar Pine, Poplar, Sassafras, Walnut, and Willow.

Stairway Components, Adhesives, and Abrasives.

Custom Milling and Hardware.

In Fact — Over 800 Items in Stock for High Quality, Architectural, Cabinet, Furniture, and Finish Work!

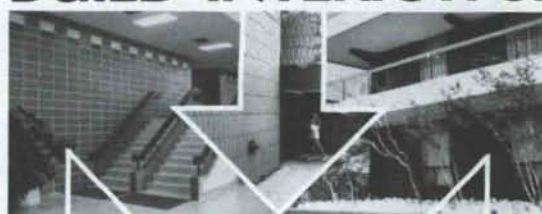
(505) 345-8135

New Mexico Toll Free:
1-800-432-6820

Outside New Mexico Toll Free:
1-800-545-6104

© 1983, all rights reserved, and Reg. U.S. Pat. Off., Canada & other countries by THE BURNS & RUSSELL CO.

BUILD INTERIOR &



EXTERIOR WALLS

with initial savings that grow with age!



**PRE-FACED
CONCRETE
MASONRY UNITS**

The only glazed block with more than 3 decades of proven performance. Permanent, sanitary glazed finish. Practically no maintenance. Energy & insurance savings too. Meets Gov't specs. Wide range of color, texture, form, scale & pattern. © 4.4 Bu in SWEET'S.

**NO REFURBISHING!
ASK FOR COST COMPARISONS
AND CASE HISTORIES...**

FEATHERLITE BUILDING PRODUCTS CORP.,
Box 489, Lubbock, TX 79408

FEATHERLITE BUILDING PRODUCTS, Box 9977, El Paso, TX 79990

CREGO BLOCK CO., INC., 6026 2nd St. NW, Albuquerque, NM 87107

BUILDERS BLOCK, Box 1633, Roswell, NM 88201

BUILDERS BLOCK, Drawer FF, Las Cruces, NM 88001

806 / 763-8202

915 / 859-9171

505 / 345-4451

505 / 622-1321

505 / 525-3633