



Architect: Jess Holmes

**Engineer: Howard S.
Cottrell**

Project background: The Wilson Park pool, designed as a neighborhood swimming facility, was one of five such projects approved by Albuquerque voters in 1968. The facilities are intended primarily for instructional purposes with limited time allowance for recreational swimming. Bathhouse facilities are minimal, as most swimmers will come dressed for swimming. There are no diving facilities provided as the pool's depth ranges only from three to five feet.

Project solution: The bathhouse circulation pattern was kept simple and straightforward to lessen confusion among the young children. The design is such to keep vandalism at a minimum. The bathhouse is lighted naturally by top light through clerestories over the dressing benches and ventilated

WILSON PARK SWIMMING POOL

for the City of Albuquerque

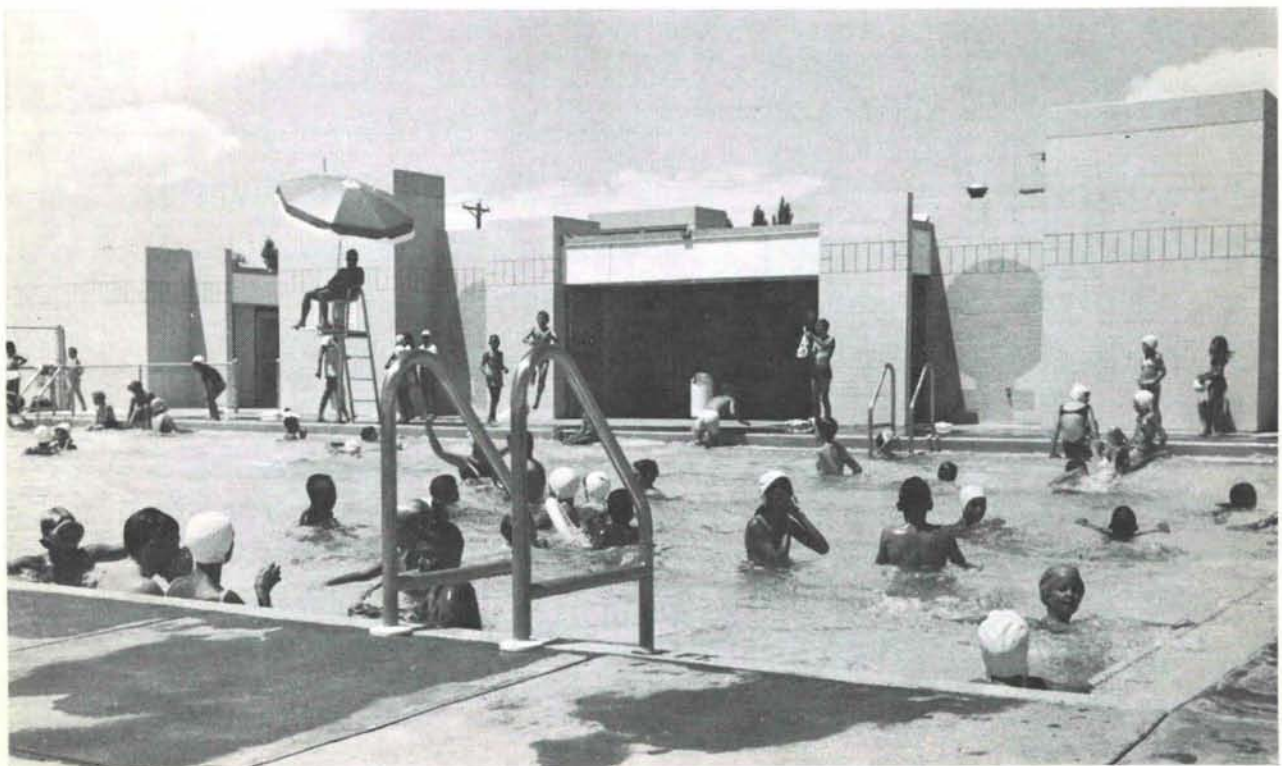
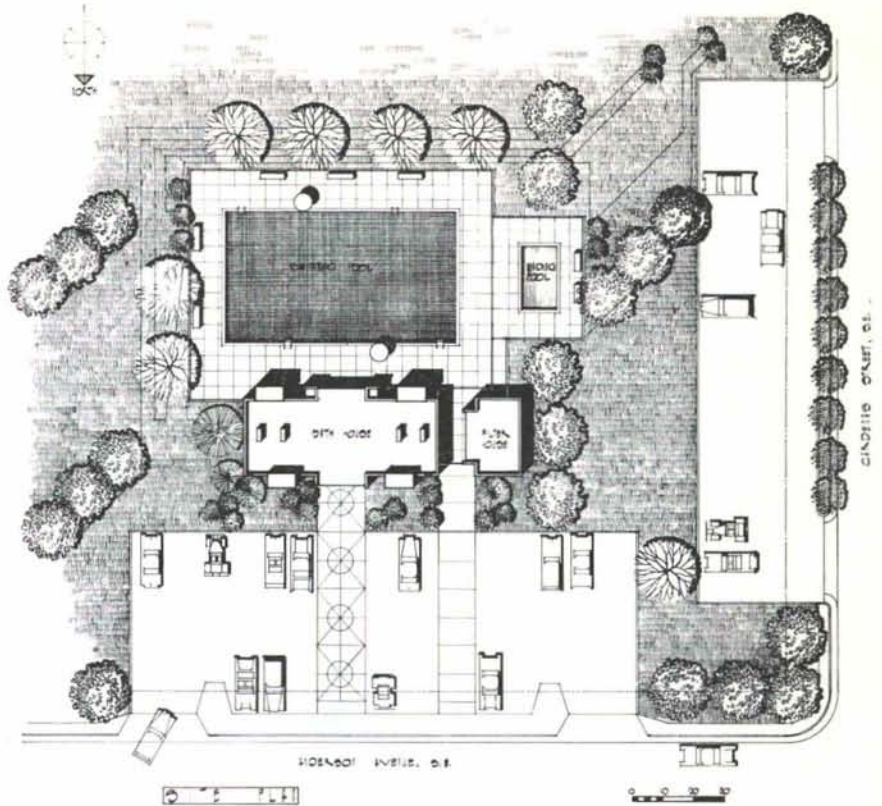


skylights over the showers and toilets.

Graphics are used in lieu of signs to indicate boys' and girls' shower areas. The colors for the graphics, i.e., "sex symbols," were so chosen that girls identify not only with the symbol, but with the lavender color; boys, with a pale blue. These colors are utilized again as accent colors on the interior to re-emphasize the relationship.

The project, as conceived, was an attempt to create a total atmosphere of warmth, cheerfulness, light and spaciousness, qualities that often fail to accompany swimming pool environments.

Total Project Cost: \$87,000 (not including architectural fees).



ARCHITECTURAL SPECIALTIES DIVISION

J. C. BALDRIDGE LUMBER CO.

Agents for

Walter Balfour & Co., Inc.

ROLLING STEEL DOORS

and

GRILLES

with

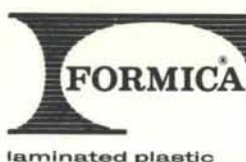
Installation Available

write or call

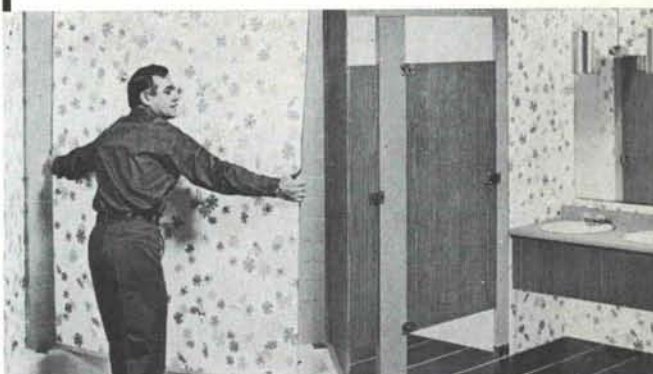
Lloyd Sallee
P. O. Box 1396

Bob Park
Tel. 243-4546

Albuquerque, New Mexico 87103



PANEL SYSTEM 202 AND TOILET COMPARTMENTS



FORMICA® brand Panel System 202 goes right over almost any structurally sound wall . . . no tearing down . . . goes up in a day or less! Perfect anywhere moisture is a problem. Formica Brand Laminated Plastic is the ideal surfacing material for toilet compartments and other restroom partitions, for the same reason it serves so handsomely on surfaces in other parts of a building.

FORMICA DISTRIBUTOR



FORMICA REPRESENTATIVE
RICHARD P. KASSA
268-4589

Albuquerque

BLUEPRINT
COMPANY

ALBUQUERQUE'S OLDEST BLUE
PRINT COMPANY — SINCE 1928

BLUE PRINTS
BLACK & WHITE PRINTS
PHOTO COPIES
CAMERA
REPRODUCTIONS
MULTILITH PRINTING

Exclusive Dealers For

KEUFFEL & ESSER



514-4th N.W.

Phone
243-3521

ALBUQUERQUE,
NEW MEXICO

ALBUQUERQUE TESTING LABORATORY

Sub-soil Investigations
For Structural and Dam Foundations

**Two Drills and Crews now
available for Prompt Service**

Laboratory Analysis and
Evaluation of Construction Materials

**All work done under the supervision
of Registered Professional Engineers**

532 Jefferson St. N.E. — P. O. Box 4101
Phone AL 5-8916 Albuquerque
Phone AL 5-1322 New Mexico

KINNEY BRICK COMPANY INC.

Manufacturers of:

- Common Brick
- Patio Brick
- Face Brick
- Roman Brick
- Norman Brick
- "SCR" Brick

Distributors for:

- Summit Brick Co.
- Acme Brick Co.
- Major Brick Co.
- Eureka Brick Co.
- Texas Clay Products
- • • • •

Samples and information upon request

Visit Our Office & Showrooms at Plant
5 miles South just off of Second Street

ALBUQUERQUE, NEW MEXICO

Phone 877-4550

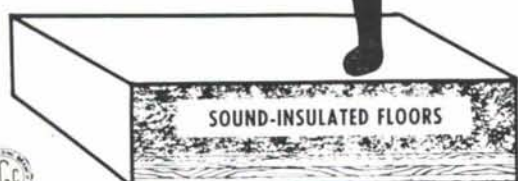
P. O. Box 1804, 87103

MAN, TAKE IT FROM A
"CAT" WHO GETS 'ROUND

by **Elastizell**

PURRRR
STEP
ON IT DAD! PERFECT

The system has a sound rating of 50 STC, and up to 56 F-STC can be realized by combining it with a resilient channel mounted ceiling. INR of plus 20 and more are experienced with pad and carpet covering.



The one-day application of an ELASTIZELL insulated floor begins with standard framing covered with 5/8-inch thickness of fir plywood or 1 x 6 subflooring as shown above.

FOR COMPLETE INFORMATION
Call or Write

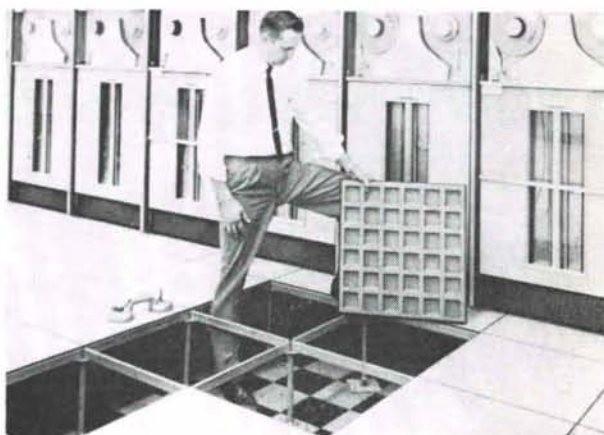


2906 Broadway NE-87107 (505) 345-3621

THE

INFINITE ACCESS FLOOR

The sensible answer to the problem of under-floor accessibility for cables—heating, cooling, conduit, piping, conveyors, etc.



The Tate Floor System, as installed by New Mexico Marble & Tile Co. offers the advantages of: The high strength of steel, interchangeable floor panels, fire resistance, low cost, lateral stability, permanent floor level, cut-out flexibility, dimensional stability, unaffected by temperature or humidity, owners choice of floor covering.

Ask us for details of this
revolutionary floor system.

**NEW MEXICO
MARBLE AND TILE CO.**
414 Second St., S. W. Albuquerque, N. M.
P. O. Box 834 • Phone 243-5541

LATH and PLASTER SUPPLY CO., Inc.

116 Industrial Ave. N.E.

Phone (505) 344-2303

ALBUQUERQUE, NEW MEXICO 87107

DISTRIBUTORS FOR:

- Keene Penn Metal Structural Steel
- Dur-O-Wall Masonry Reinforcing
- Kewanee Doors and Frames
- Milcor Access Doors
- Keystone Steel & Wire
- Plaster Weld & Weld Crete

Complete Line of Lathing and Plastering Systems, Drywall Systems,
Industrial Plasters and Masonry Products.

For the best possible prices and services, CALL US!