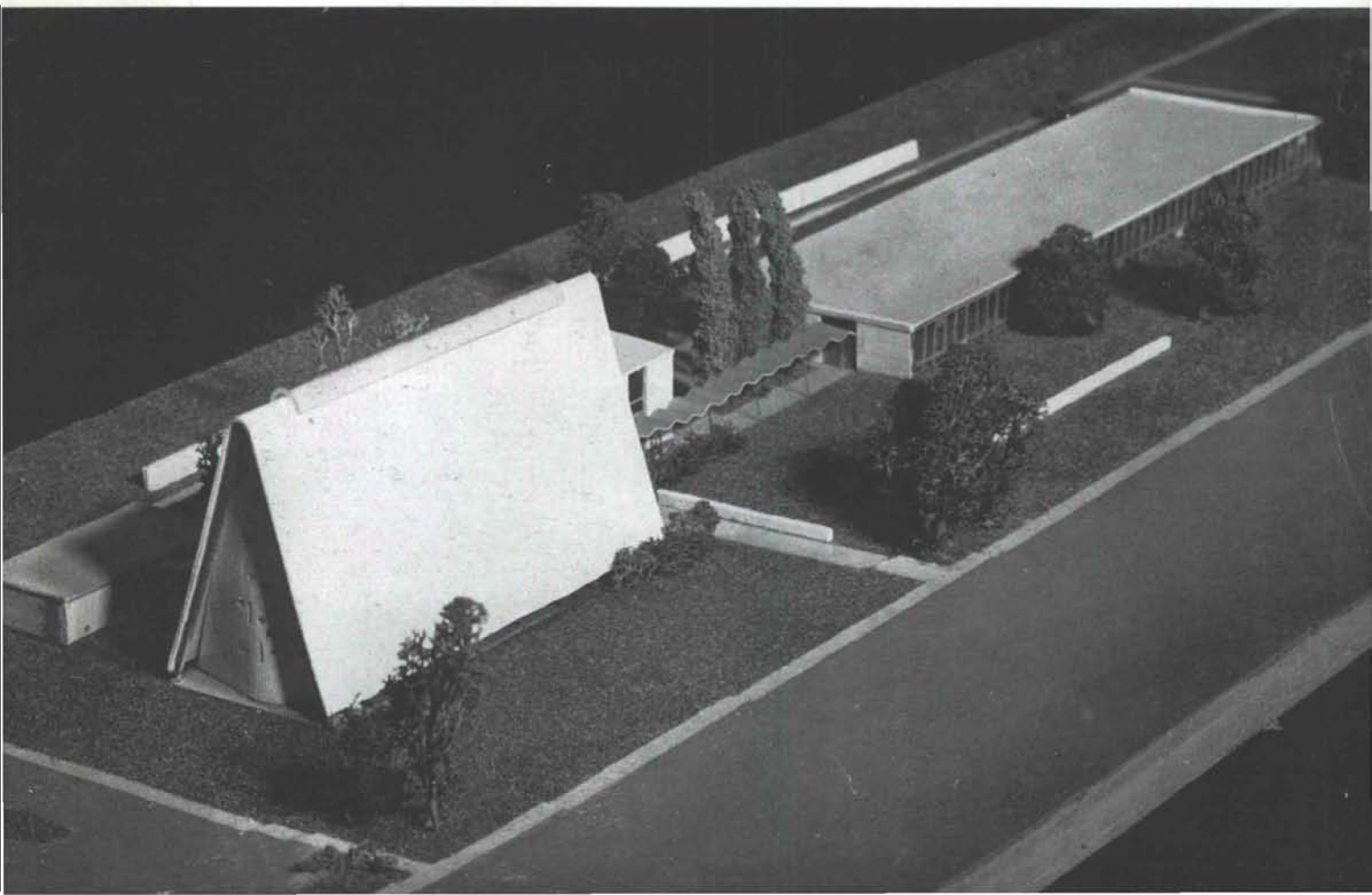
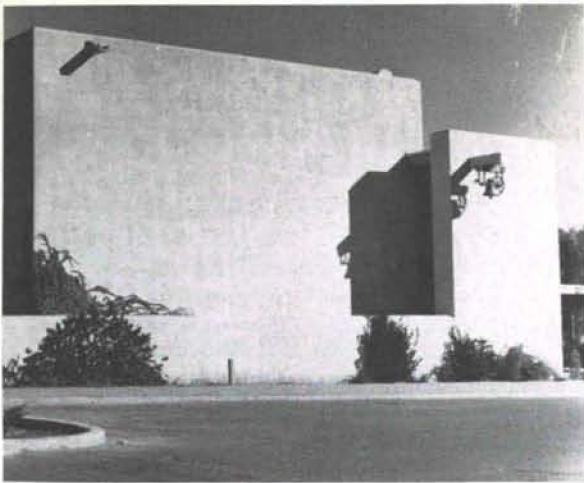


**Flatow, Moore, Bryan and Fairburn, Architects and Planners**

*Asbury Methodist Church, Albuquerque, 1956.*

*This church was planned for a small growing congregation who desired to begin with a sanctuary and eventually to add other units as they were needed. A master plan was prepared showing the eventual development of the entire site. Future plans call for an education building, a fellowship hall and a chapel. The sanctuary is triangular in form and is composed of laminated wood arches which support a two inch tongue and groove deck which is covered by aluminum roofing. Small basement-type sash windows and a corrugated plastic skylight along the ridge provide the major light sources. The stucco altar end-wall is pierced by small colored glass panels.*

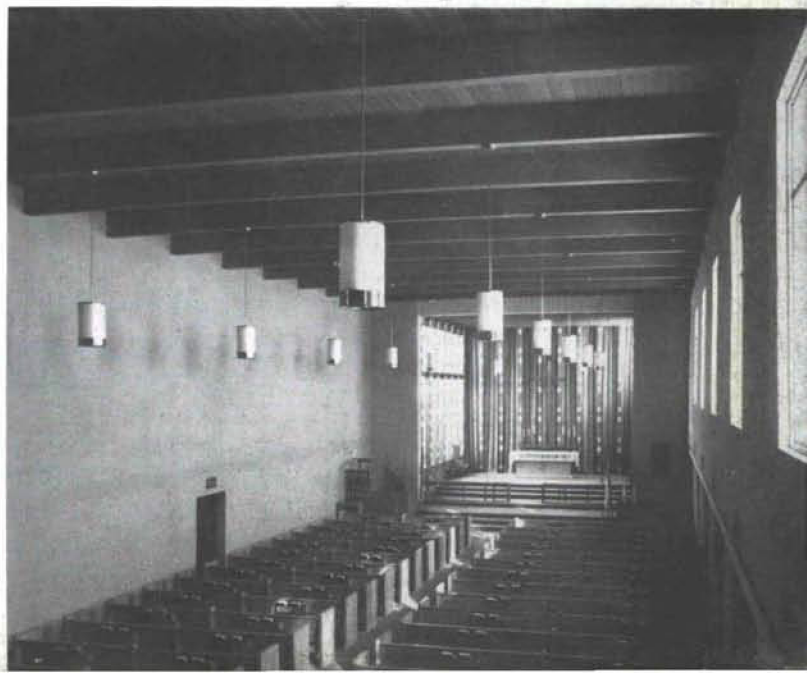
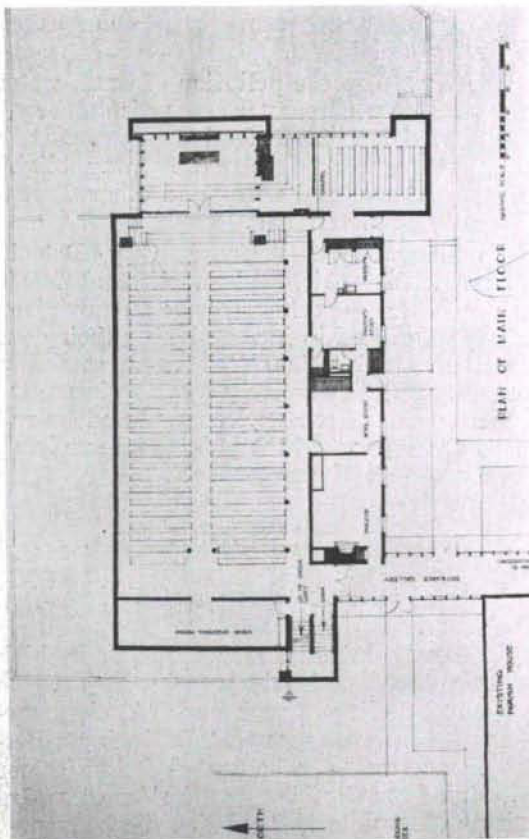




**Ferguson, Stevens, Mallory and Pearl, Architects and Engineers**  
**St. Marks on the Mesa Episcopal Church, Albuquerque, 1953**

Although fundamentally different in character from the existing Parish House, the sanctuary, chapel and secondary rooms were designed to visually harmonize with the older building. This was accomplished by the use of broad unbroken wall surfaces and simple bold detailing in wood. Three elements are especially distinguished in this church. The site plan itself is sympathetically handled with a wide brick walk separating the west end of the church from the parking lot, an enclosed garden on the north side and a walled terrace on the east side. Within the spatial relationships are subtly handled, especially in the apse area of the sanctuary and adjacent chapel. Finally, the simple wood detailing with brief accents of color contrasts with the large areas of stuccoed walls and helps to introduce and accentuate the human scale of the building.

15





*- - Serving the Architects & Builders - -*  
in Southeastern New Mexico



FENESTRA BUILDING PRODUCTS

BARBER-COLMAN CO.

STRAITS MANUFACTURING CO.

APCO

SLIDEVIEW DOOR & WINDOW CO.

RICHMOND FIREPROOF DOOR CO.

***Builders* BLOCK and STONE Co., Inc.**

P. O. BOX 792 • PHONE MAin 2-1321

— ROSWELL, NEW MEXICO —

MANUFACTURERS OF CINCRETE AND PUMICE BLOCKS

17

**Specify the Moulding  
You Want  
We can make it!**

**T E W A**  
**MOULDING CORPORATION**

*Quality Ponderosa Pine Mouldings*

110 Industrial, NE  
P. O. Box 6091 Sta. B

Phone Diamond 4-0332  
Albuquerque, N. M.