

2009

## Silver City, NM HMS Network

Leandro Flores

Mark Harberts

Lawrence Deshler

Follow this and additional works at: [https://digitalrepository.unm.edu/dpac\\_projects](https://digitalrepository.unm.edu/dpac_projects)



Part of the [Architecture Commons](#)

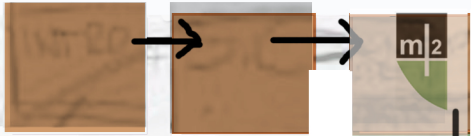
---

### Recommended Citation

Flores, Leandro; Mark Harberts; and Lawrence Deshler. "Silver City, NM HMS Network." (2009). [https://digitalrepository.unm.edu/dpac\\_projects/2](https://digitalrepository.unm.edu/dpac_projects/2)

This Architectural Plan is brought to you for free and open access by the Architecture and Planning at UNM Digital Repository. It has been accepted for inclusion in Design and Planning Assistance Center - Projects by an authorized administrator of UNM Digital Repository. For more information, please contact [disc@unm.edu](mailto:disc@unm.edu).

introduction



site

leandro flores

building

mark harberts

interior

lawrence deshler

conclusion

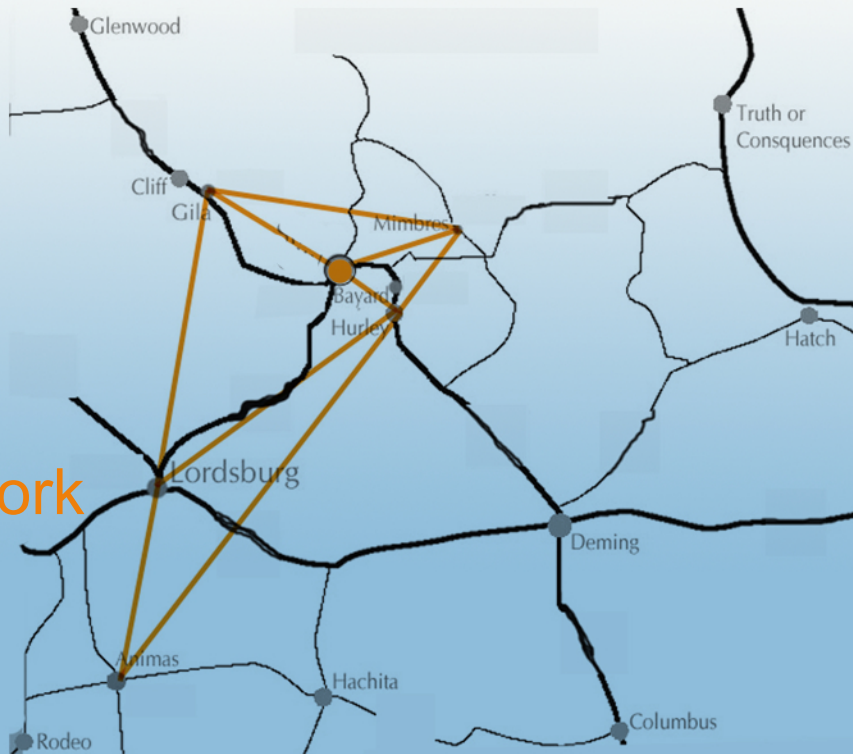
12 minutes of fame

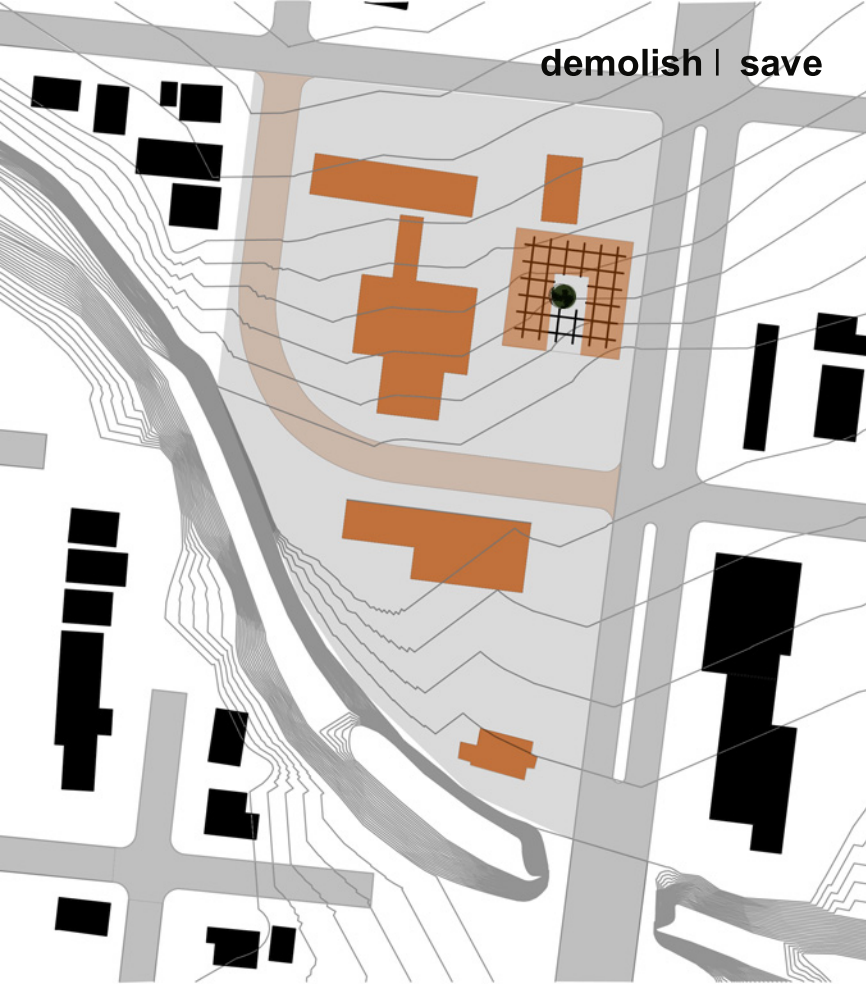
16  
slides

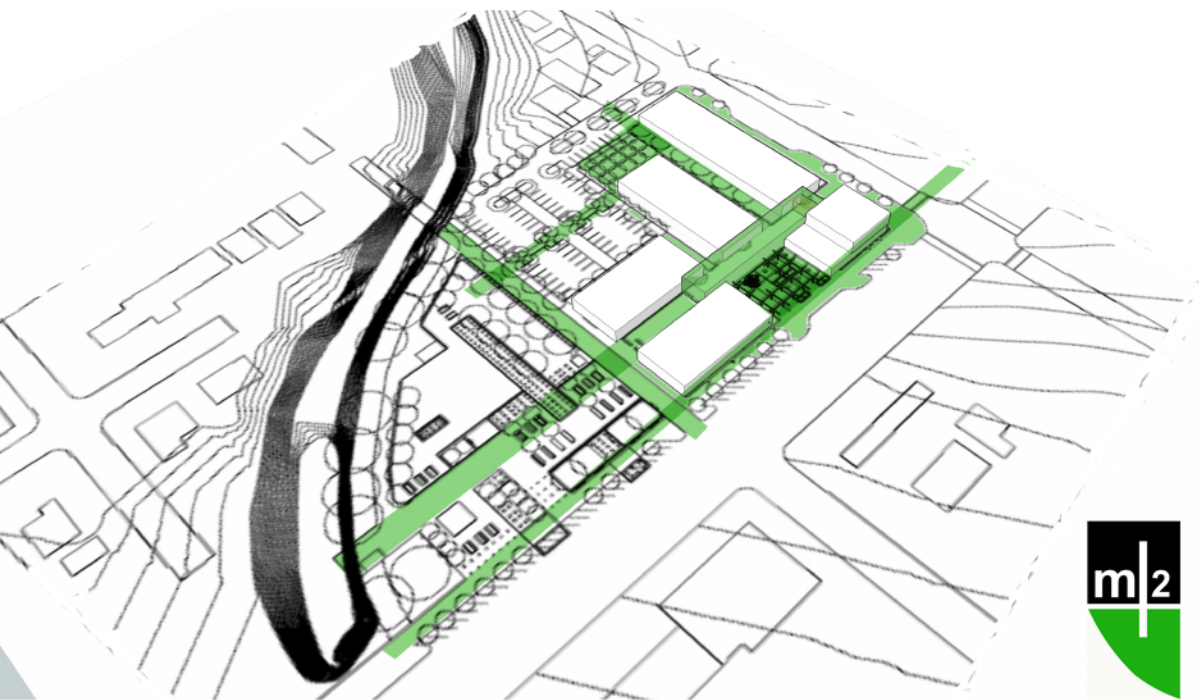




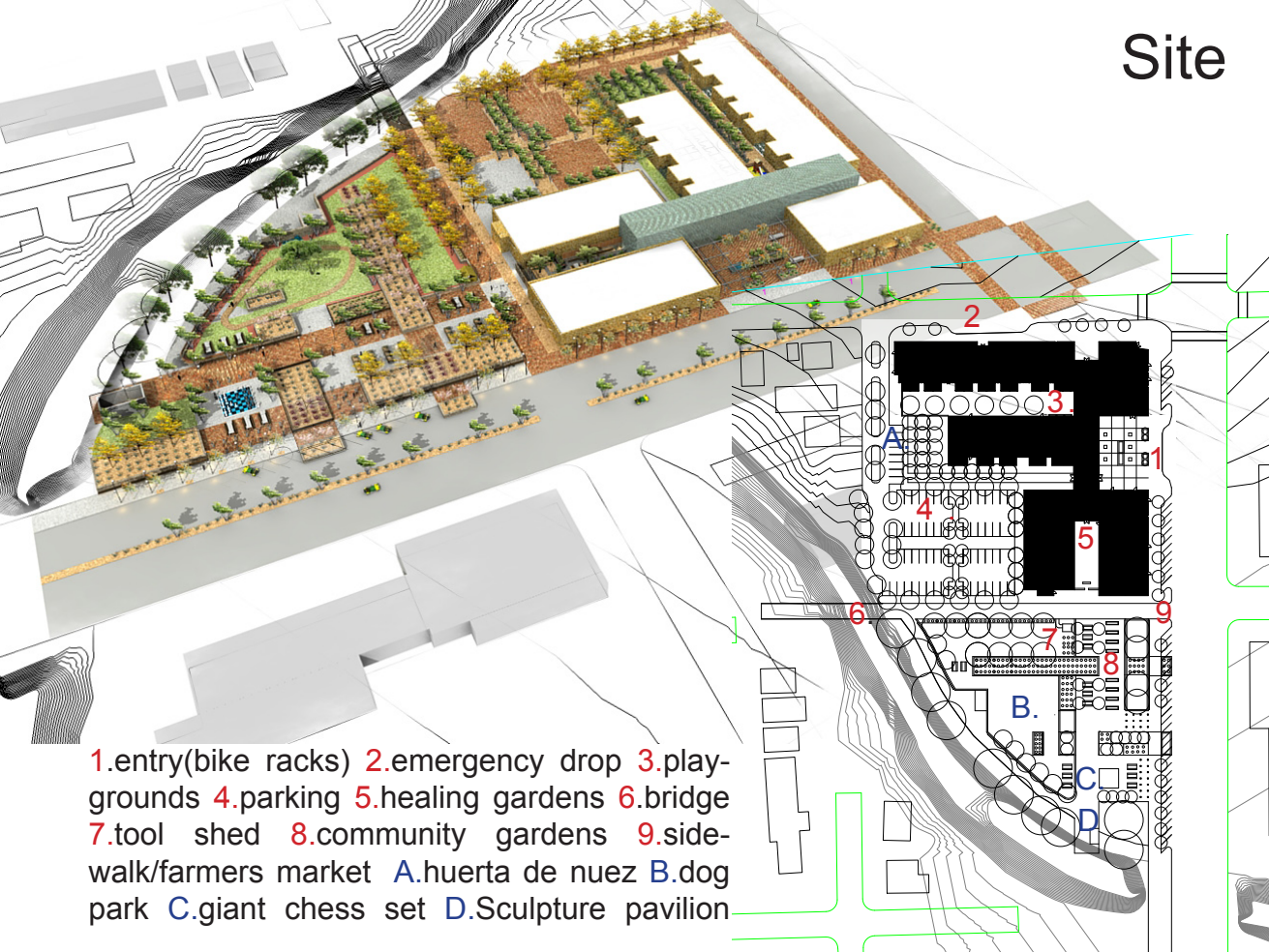
# HMS network





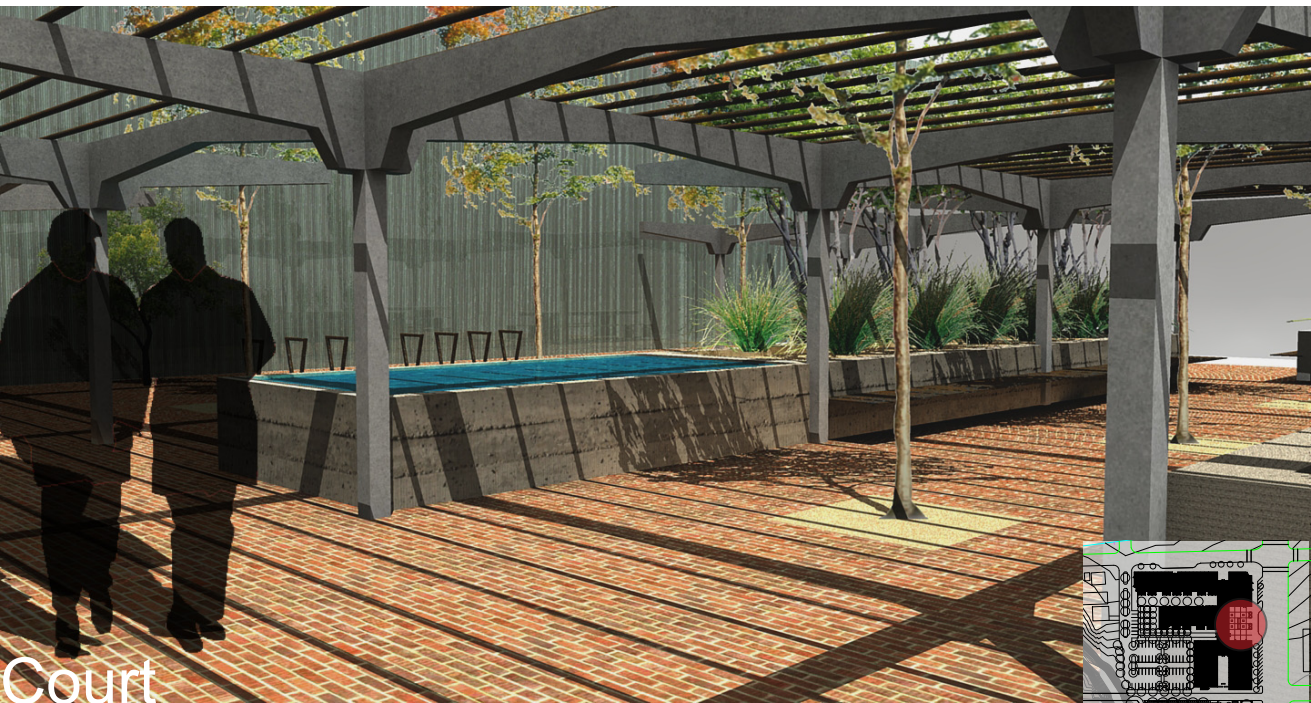


# Site

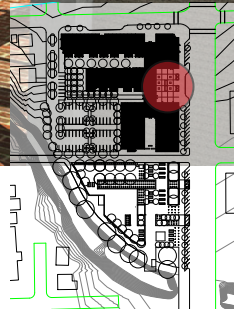


- 1.entry(bike racks) 2.emergency drop 3.play-  
grounds 4.parking 5.healing gardens 6.bridge  
7.tool shed 8.community gardens 9.side-  
walk/farmers market A.huerta de nuez B.dog  
park C.giant chess set D.Sculpture pavilion



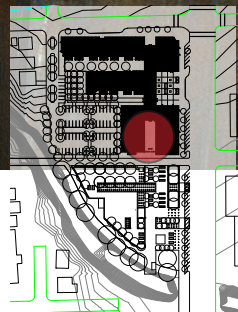


Court





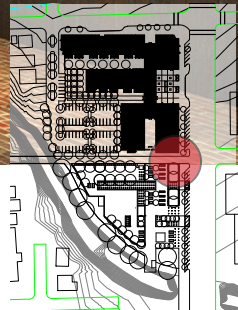
Healing Gardens

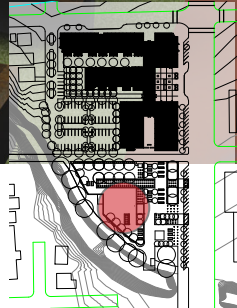




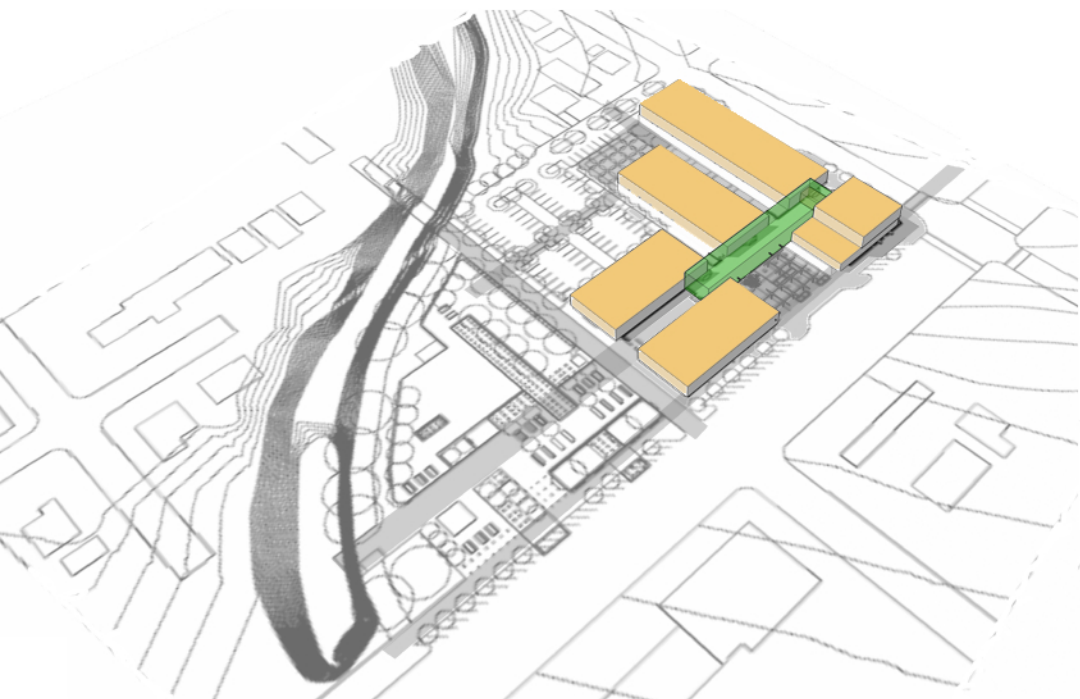


Farmers Market











12th street elevation



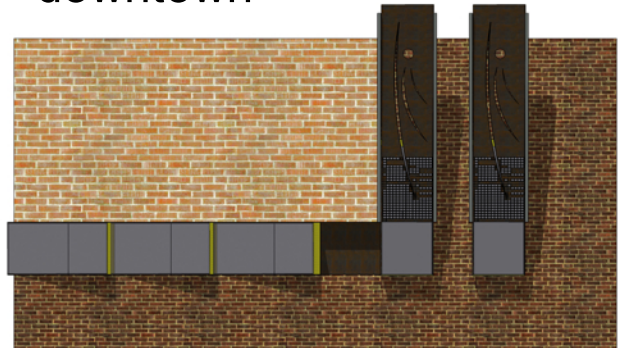
pope street east elevation



scale | material | color



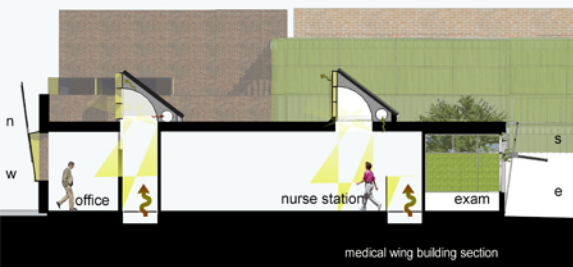
downtown



the street module



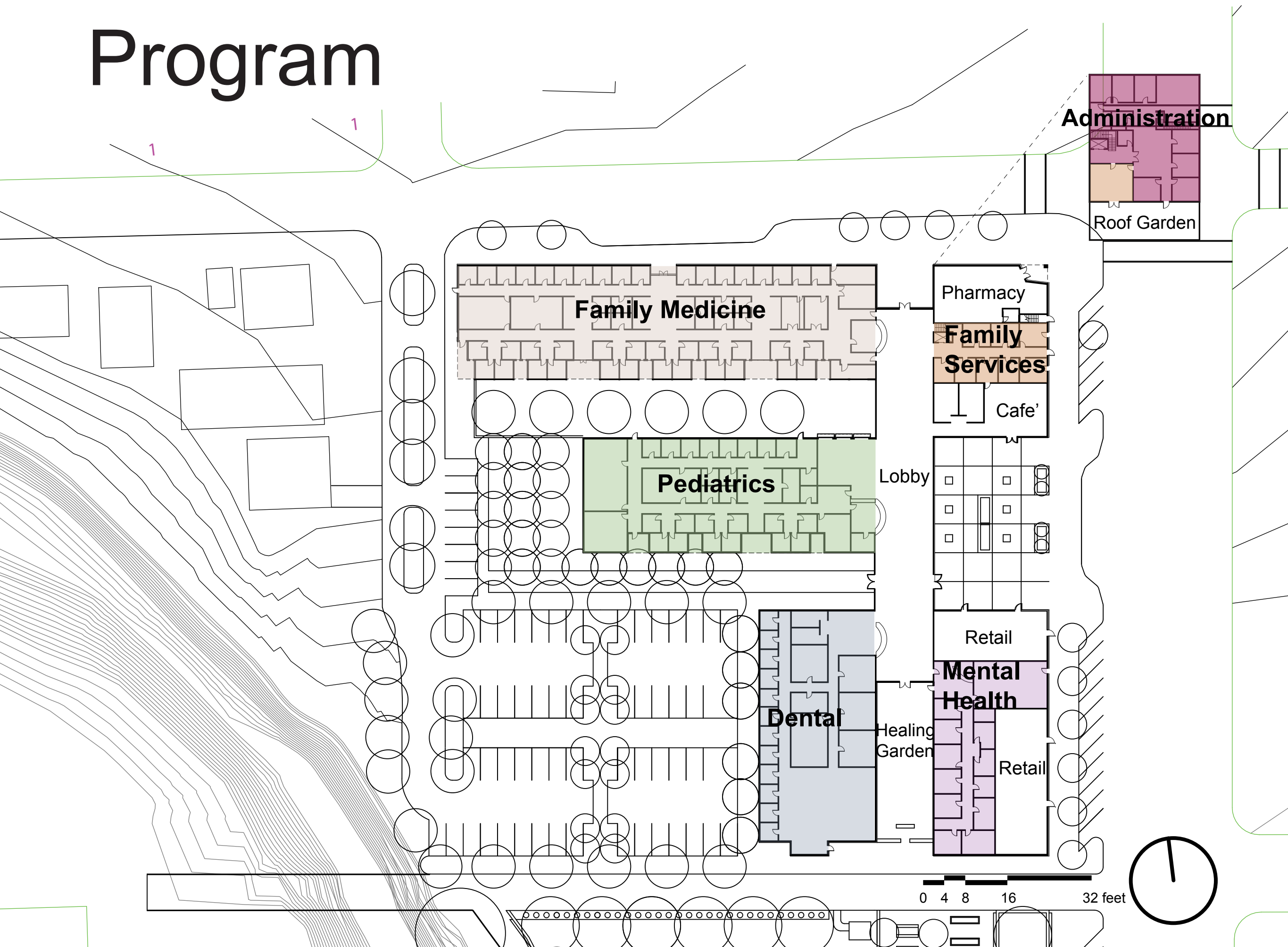
the corner



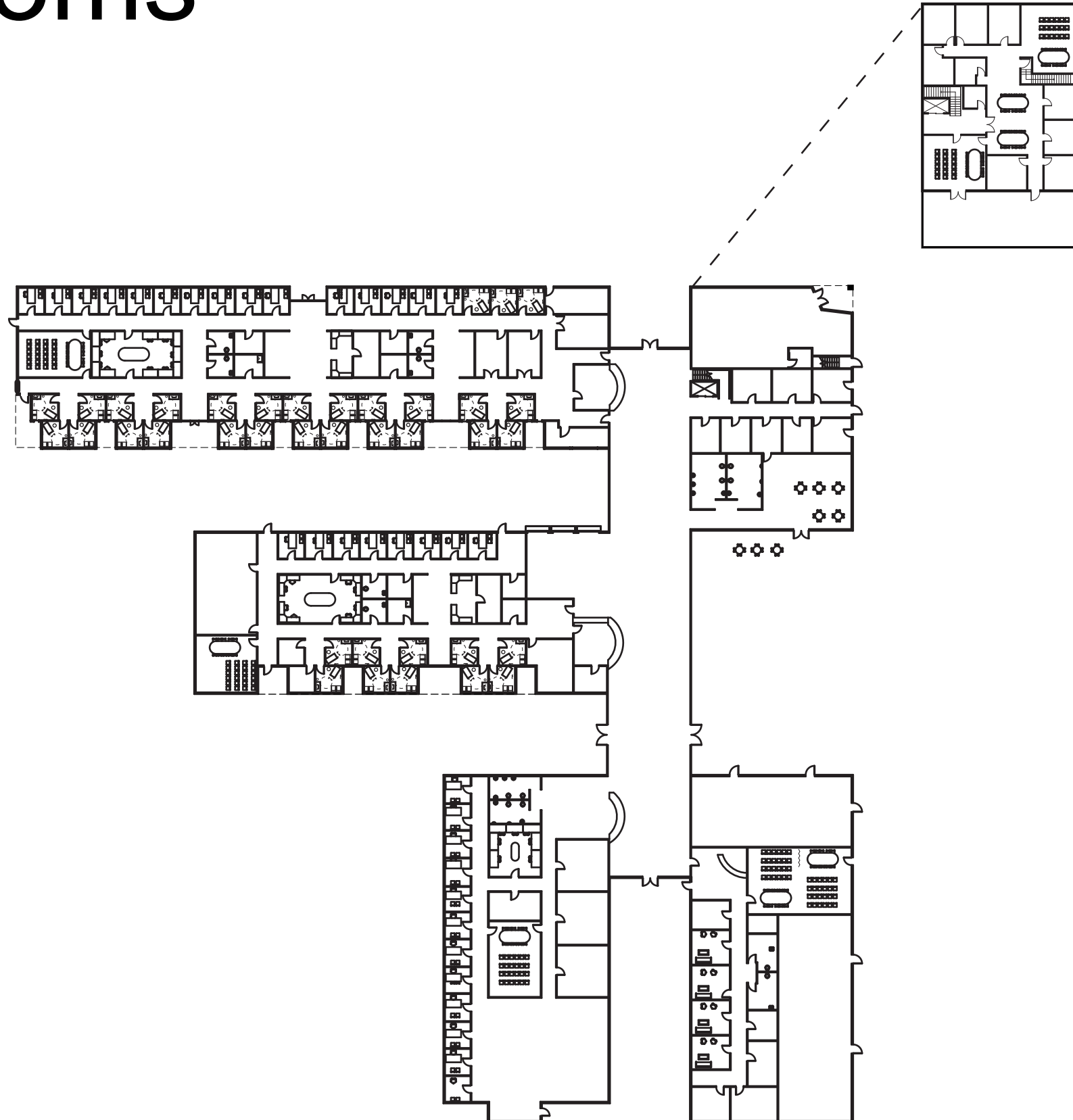




# Program



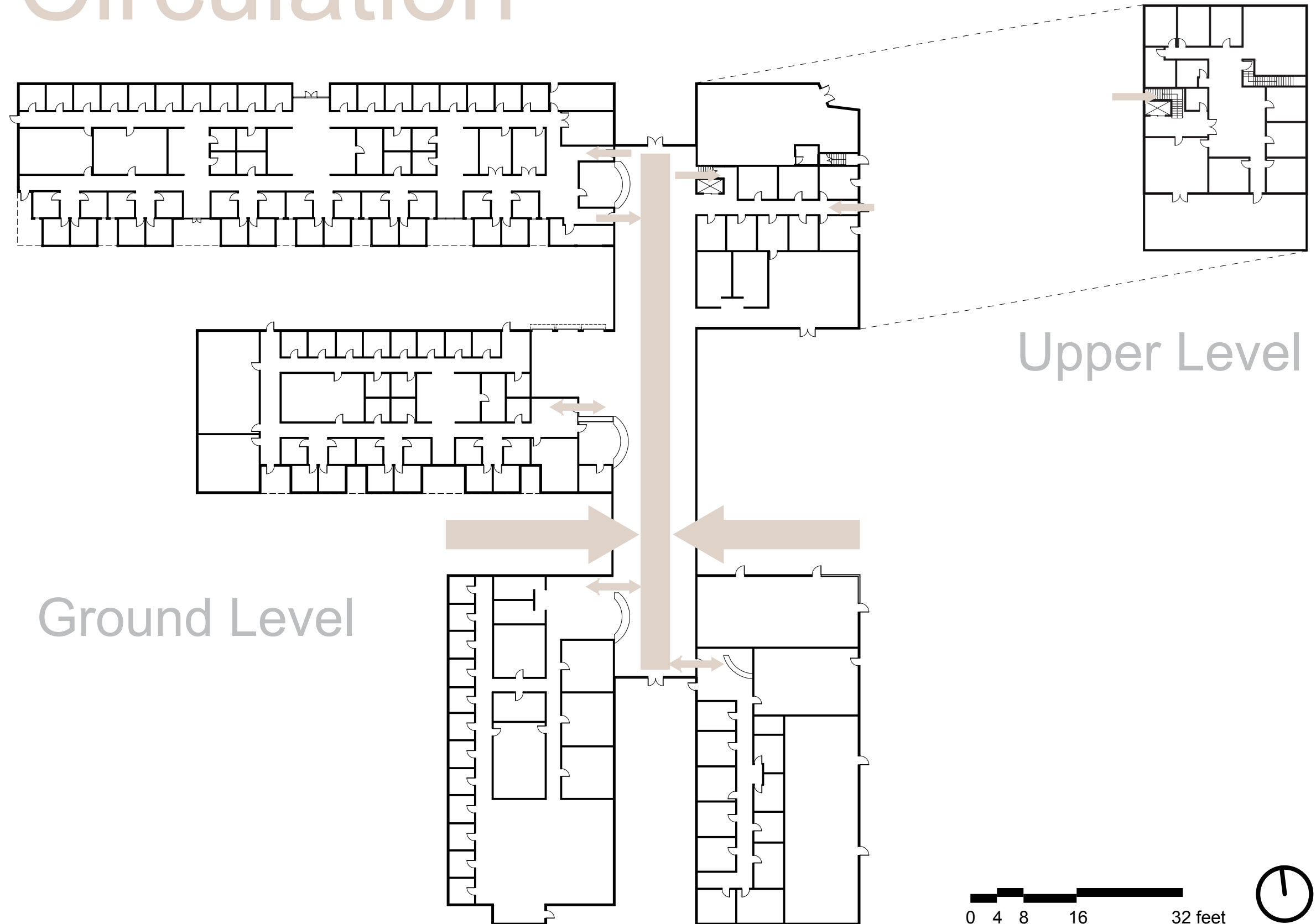
# Rooms



0 4 8 16 32 feet

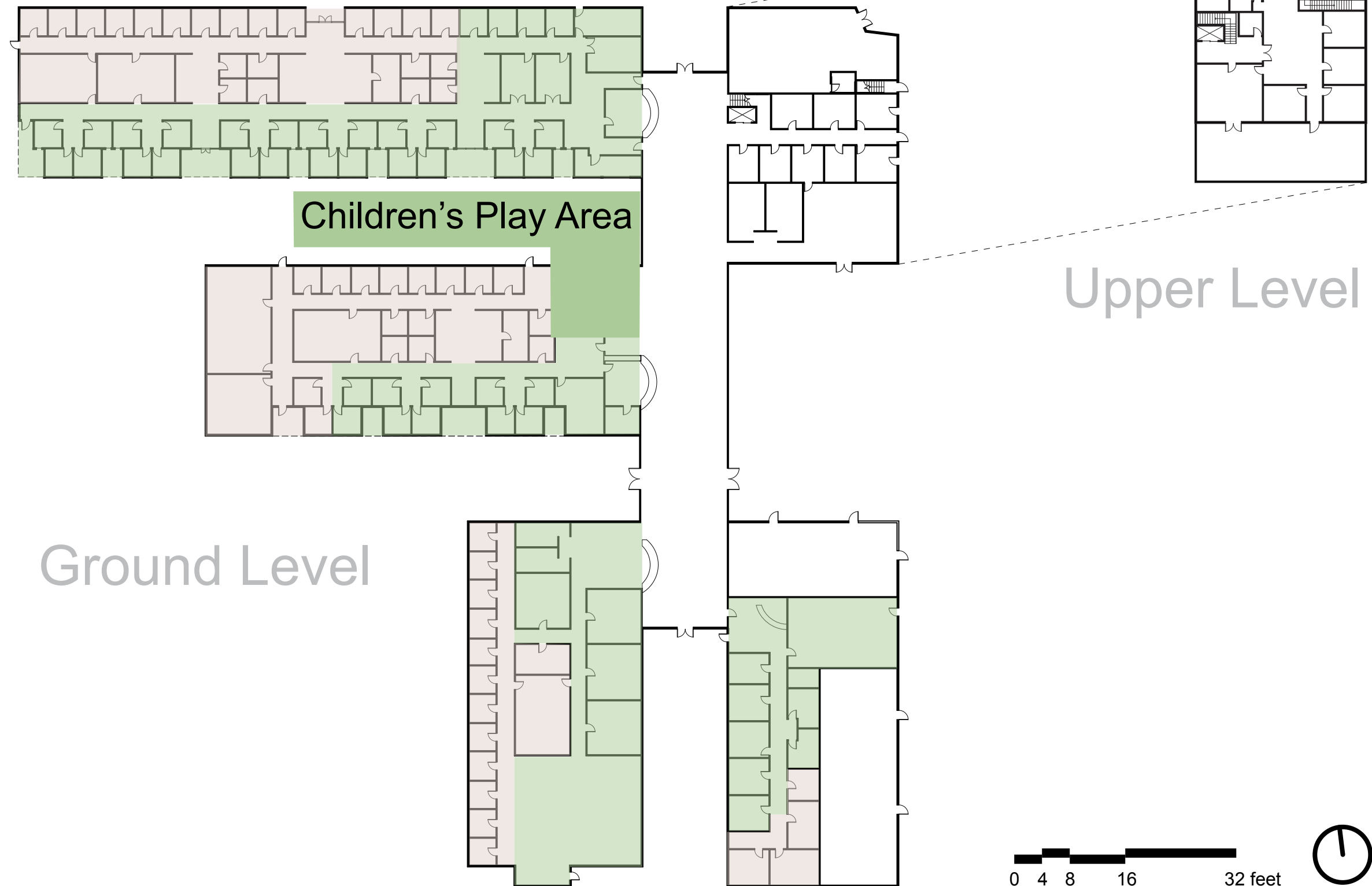


# Circulation

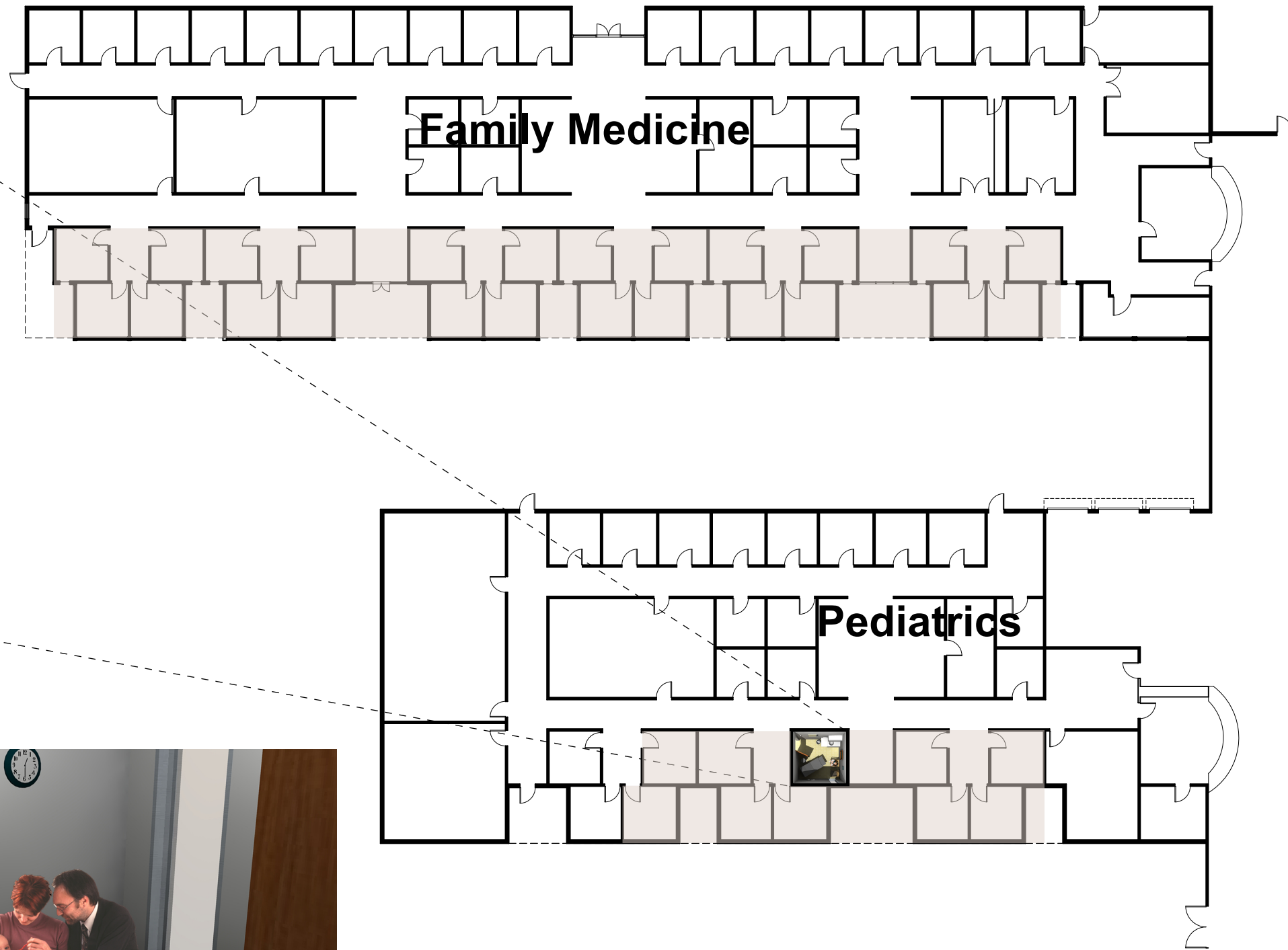




# Front - Back



# Medical Exam Room

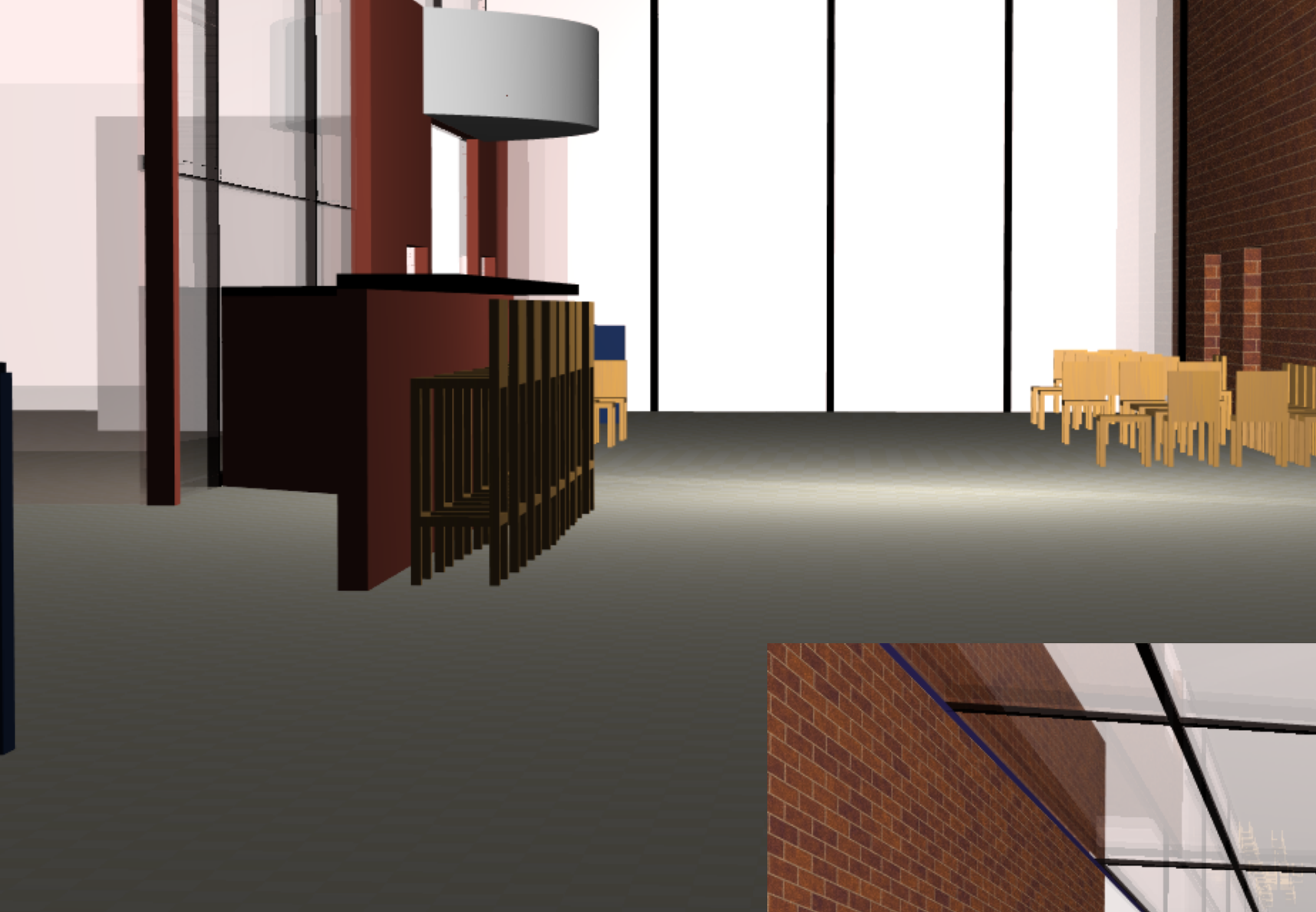


0 4 8 16 32 feet



# Lobby

South from Family Medicine



North to Family Medicine







