

The new community library at Jal has been made possible through the generous endowment of two of its prominent citizens. May and Elizabeth Woolworth, sisters of Clyde and Martha Woolworth, stipulated in their wills that the major portion of their estate be used for the building and endowment of a public library in memory of their brother and sister who homesteaded in the Jal area in 1915.

The facility houses a 35,000 volume library, a film and lecture theater seating 120, children's area, gallery, historical display, serving kitchen and a hobby/meeting room.

The library portion of the structure has been recessed into the sloping park site with the park itself continuing atop the roof. By recessing the library the architects took advantage of an extremely stable insulation envelope; it minimizes air leakage, for the interior remains at a mid 50° F temperature range in lieu of the 30° F to 40° F temperature fluctuation over a 24-hour period, which is normal to this southeastern New Mexico community.

Glazing under deep overhangs toward the south and west take advantage of natural solar angles during the colder months while not compromising the cooling characteristics during the summer. Natural light has been controlled through clerestories and light wells, which are oriented toward the most advantageous and non-glaring light sources.

To conserve energy the heating and cooling system uses only electricity and is capable of producing 2.0 to 2.4 units of heat for every unit of electricity consumed. This system uses no supplementary cooling or heating energy whenever the internal cooling load nearly matches the exterior heating load. During extreme cold periods supplemental electric heating will be required and during extreme warm periods supplemental heat rejection equipment will be required. The architects have accomplished the heat rejection

# WOOLWORTH COMMUNITY LIBRARY

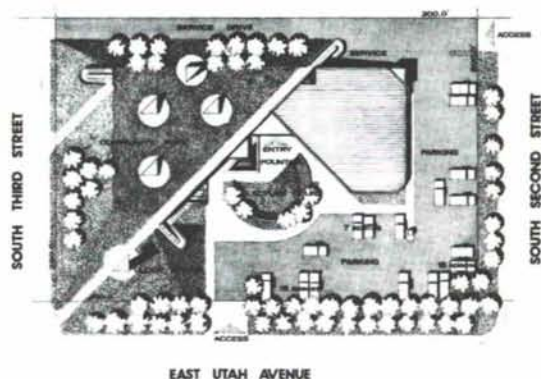
Jal, New Mexico

Architect: Dean and Hunt Associates, Ltd.

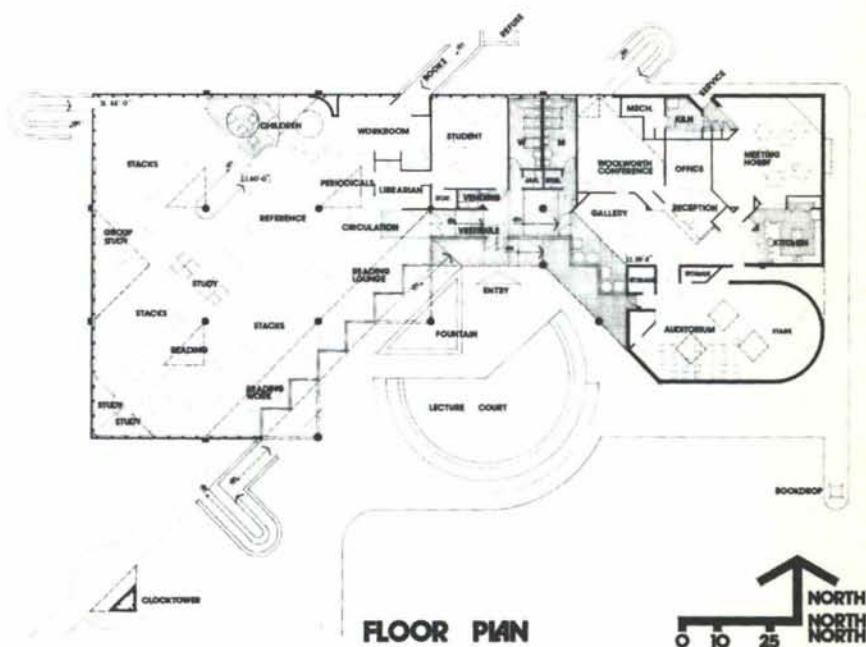
Library Consultant: Richard Van Wye

Mechanical Engineer: Bridgers and Paxton

Structural Engineer: Robert D. Krause



SITE PLAN



FLOOR PLAN





☞ Looking across the lecture court and fountain towards the entry beyond.

A sound proof children's area, glassed for visibility has the walls and ceilings carpeted, as well as the floor, to deaden the sound of the children. The area has been designed to include puppet shows, movies and story telling. ☞



☞ Looking from the parking area toward the lecture court and entrance.

The two level library area. ☞



☞ Auditorium is on the right with the office reception area ahead to the left.



The Woolworth Room was designed to house original furnishings from the Woolworth home and historical information about Clyde and Martha Woolworth. ☞

☞ The auditorium.

Photography: Jerry Goffe





needs by designing the fountain as an integral part of the system. The entrance fountain constantly recycles 80 gallons of water across a sloping concrete lip to give off heat into the air, thereby cooling the room below. The mechanical system is ideal for this building; it is energy conserving, simple to operate and maintain while providing all the individual room controls necessary.

On the interior, materials are used which give the most light reflectance: light oak furnishings, light sand beige carpet, white end pan-

els for the book stacks and ceilings. The light, cool colors of the library are repeated throughout the community functions.

Comments Jean Piper, library director, "The library is a big deal for a small community like this... It's a lovely building... lots of people just come to look... catches the eye in a small town."

Carl Martin, superintendent of schools in Jal, adds, "...acceptance has been real satisfying. The meeting room has a lot of use. Some nights two or three groups will use it; at least one most

nights. People come in to browse, not necessarily to borrow books. Before, there was no browsing space. The outside is very pleasing to the eye. We get many visitors from out of town. They may be in town on business and stop by our new library."

According to the architects, a major portion of the successful response of the building to its community needs came through a positive pre-programming effort in conjunction with a highly perceptive and open-minded board of trustees.

**AGP**

*Home of the  
Concrete Giant!*



**ALBUQUERQUE GRAVEL PRODUCTS COMPANY**

**DEDICATED TO QUALITY  
AND SERVICE**

600 John Street, S.E. P. O. Box 829 Tel. (505) 242-5265 Albuquerque, N. M. 87103




# The paints and coatings Southwestern professionals use.

Easy-on interior paints, climate-designed exterior paints, color coordinated wall-coverings, industrial-technical coatings, and a complete selection of professional supplies and accessories. Since 1936.

## Hanley Paint

THE COLOR COMPANY

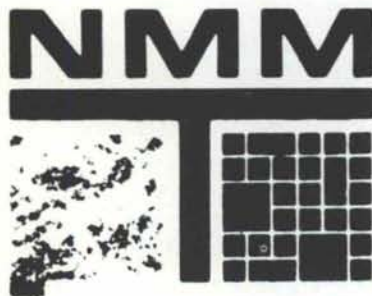
Albuquerque, N.M.:  
1214 San Pedro N.E., 9800 Montgomery N.E.  
El Paso, Texas: 1324 Texas, 9054 Dyer,  
North Loop at Carolina,  
5937 North Mesa, 1848 Trawood



612 CENTRAL S.W.  
ALBUQUERQUE, NEW MEXICO 87102

PROFESSIONAL  
DESIGN SERVICE  
COMMERCIAL  
FURNISHINGS  
LANDSCAPE  
SYSTEMS  
LIGHTING  
ACCESSORIES  
CARPETING

# interiors



**Marble  
Quarry Tile  
Monarch Tile  
Terrazzo Floors  
Dex O Tex Floors**

**New Mexico Marble & Tile Inc.**

2500 2nd SW  
P.O. Box 25566  
Albuquerque, NM 87125  
(505) 243-1771

763 Cerrillos Rd.  
Santa Fe, NM 87501  
(800) 432-8655

**Build. Save Money.  
SAVE ENERGY...  
all in one operation!**

**LOW U-FACTORS** of lightweight block, plus granular fill. **BUILD & FINISH IN ONE OPERATION.** Large block go up faster. Thru-wall load bearing units eliminate expense of back-up wall. One trade. Job-site delivery. **MEET OSHA, USDA & other Gov't spec. LOW COST INSURANCE** of fire rated walls. **NO REFURBISHING.** Can't peel or blister. Permanent, easy to clean finish. **48 COLORS.** Plain, scored, variegated & sculptured faces.

**Have you  
used  
NEW**

**Spectra-Glaze II<sup>®</sup>**  
**GLAZED BLOCK WALLS**  
**lately?**

Reg. U.S. Pat. Off. Can. & other countries by THE BURNS & RUSSELL CO.  
FEATHERLITE BLOCK CO., Box 489, Lubbock, TX 79408 806/763-8202  
FEATHERLITE BUILDING PRODUCTS CO., Box 9977, El Paso, TX 79990 915/859-9171  
CREGO BLOCK CO., INC., 6026 2nd St. NW, Albuquerque NM 87107 505/344-3475