

A Continuing Heritage --

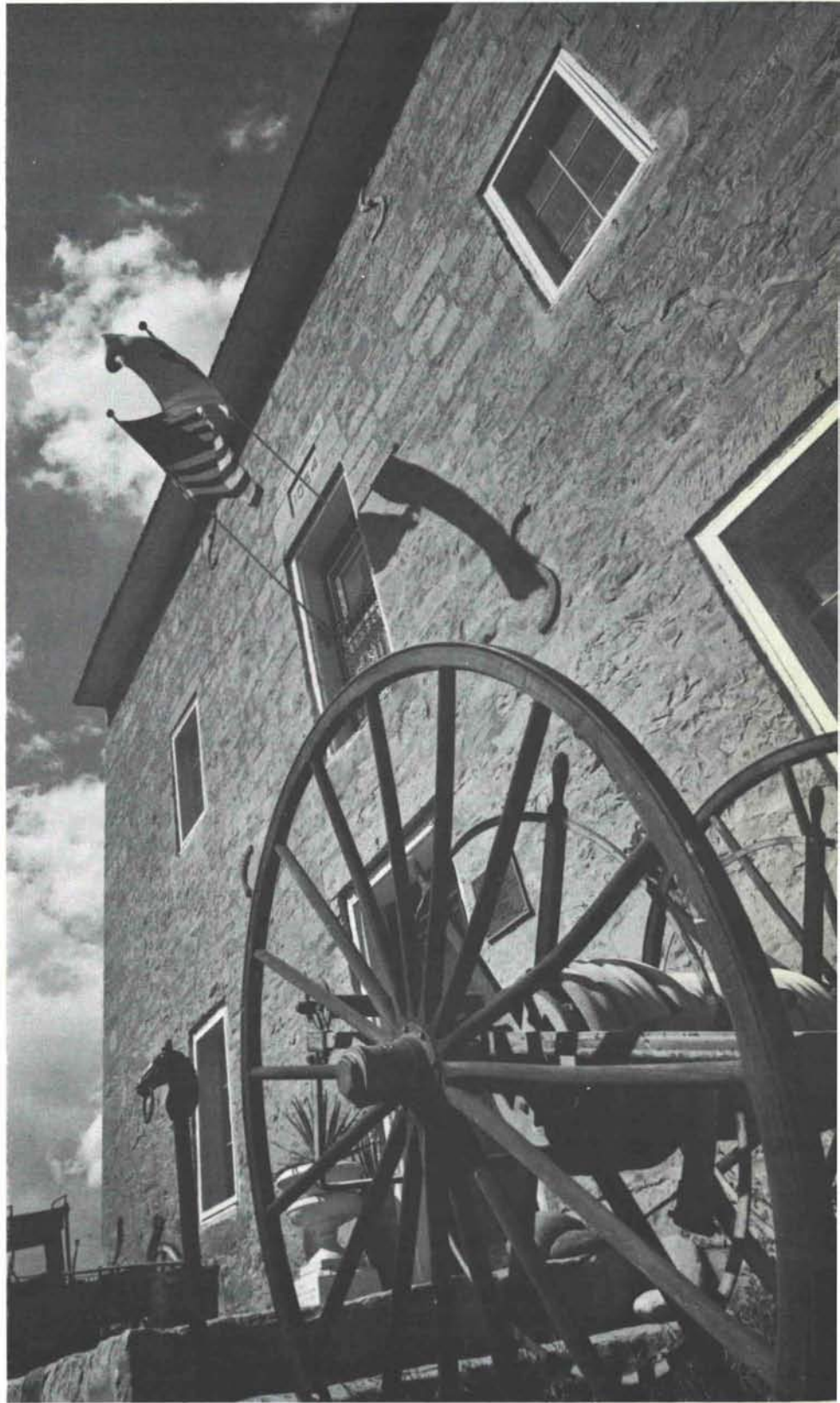
The Cultural Properties of New Mexico

A brief survey of New Mexico historic sites was published in 1967 by the State Planning Office. However, it was not until 1968, when the Department of Housing and Urban Development agreed to provide the funding, that the state was able to undertake a thorough state-wide survey and to prepare a comprehensive state plan for historic preservation. Aware of the need for professional review competence and the exacting requirements of the Federal agencies involved, the State Planning Office asked Governor David Cargo to appoint a small review committee composed of historians, architects, and archeologists. This was done in April 1968, and the program was underway.

In April 1969, the Governor signed the Cultural Properties Act. Drafted by the governor's review committee and the State Planning Office, this legislation gave permanence to the committee, outlined its duties and specified the professional fields from which the members could be chosen: history, anthropology, architecture and art. Further, the law states that: "Each appointed member shall have achieved recognition for accomplishment in his field in the American Southwest, and each shall have specialized knowledge of New Mexico."

Two years of monthly meetings by the whole committee, supplementary meetings by subcommittees, and many trips about the state by individual members have resulted in the publishing of a comprehensive document: "Historic Preservation — A Plan for New Mexico." The plan contains detailed proposals on several specific properties and lists the 168 sites which were approved for

The Aztec Mill, Cimarron



listings on the State Register at press time. Subsequent listings have raised that figure upward and will continue to do so. The list is varied; it includes a small statue, c. 1625; a carved stone altar screen, c. 1760; archeological sites, and buildings; it spans the vast range of New Mexico history, from the Folsom man site (13,000-8,000 B.C.) to a contemporary adobe chapel designed by George Nakashima and completed in 1967.

Included on the New Mexico Register of Cultural Properties are these two mills. Although both were constructed during the same century, they represent opposite poles of economic affluence. The massive stone edifice represents the might of the mid-Nineteenth Century Anglo wealth and new political dominancy. The primitive, hand hewed log structure typifies the humble but industrious labors of the New Mexican Hispano.

The Aztec Mill in Cimarron was built in 1864 by Lucien B. Maxwell to furnish flour to the Jicarilla Apaches and Ute Indians. The Indians were then living on the old Spanish Grant



The Aztec Mill — exterior . . .

. . . and interior



of Beaubien and Miranda, which had recently been acquired by Maxwell. In addition Maxwell was the Indian Agent for the district.

About 100 years ago, Mr. Acorcino Cordova and his wife, Genoveva Romero y Cordova, lived on their land at the foot of U.S. Hill near Vadito. Here on the bank of the Rio Pueblo Mr. Cordova built his mill. The logs for the millhouse were cut in the nearby mountains, and, about 20 miles away, near Dixon, he found the proper kind of rock for his millstones. There he chipped and fashioned the two stones. Each stone was about 30 inches in diame-

(text continued page 26)



The Laureano Cordova Mill — interior . . .

. . . and exterior

Photographer—Karl Kernberger



--- WITH QUALITY PRODUCTS ---

DAY & NIGHT
SARGENT
KOHLER
STEELCRAFT
STANLEY

SANBUSCO

IS ON THE MOVE - - - -

SANTA FE BUILDERS SUPPLY CO.

SANTA FE AND ALBUQUERQUE, NEW MEXICO

*an
Invitation...*

TO USE OUR COMPLETE
ARCHITECTURAL CONSULTATION
SERVICE FOR THE FOLLOWING
QUALITY PRODUCTS

FORMICA LAMINATES	CONGOLEUM FLOORING
VINYL ASBESTOS AND ASBESTOS TILE (TILE TEX)	FORMICA WALL SYSTEMS
CARPETING BY PATCRAFT- JORGES-LUDLOW	MARLITE
CERAMIC TILE FOR FLOORS AND WALLS	

MOST OF THE ABOVE PRODUCTS HAVE
LOCAL FACTORY REPRESENTATION
FACILITATING ACCURATE
SPECIFICATIONS.

DISTRIBUTOR



312 INDUSTRIAL AVENUE N. E.
ALBUQUERQUE, N. M. P. O. BOX 1963 87103
PHONE 344-2317

This Space For Sale!

If you represent, or wish
to sell, a product to the
architectural profession,
then - - -

YOU NEED THIS SPACE!

call or write Robert G. Mallory, AIA
115 Amherst Drive, S.E., Albuquerque 87106
505 255-8668

KINNEY BRICK COMPANY INC.

Manufacturers of:

- Common Brick
- Patio Brick
- Face Brick
- Roman Brick
- Norman Brick
- "SCR" Brick

Distributors for:

- Summit Brick Co.
- Acme Brick Co.
- Major Brick Co.
- Eureka Brick Co.
- Texas Clay Products
- • • • •

Samples and information upon request

Visit Our Office & Showrooms at Plant
5 miles South just off of Second Street
ALBUQUERQUE, NEW MEXICO

Phone 877-4550 P.O. Box 1804, 87103

"El Rey"



EL REY STUCCO FOG-KOTE SPRAY
(A Color Stabilizing Spray)

Exterior -- Interior -- Super Bond Applied Coatings — (16 Colors)

Depicting the variety of colors of the great Southwest and Rocky Mountain Region.

An unlimited number of textures and patterns can be developed with stucco. It can be finished rough or smooth, raked, grooved or dashed. No other material used in construction has more flexibility of form and mood to aid the Architect in carrying out his design.

Manufactured in Albuquerque, New Mexico, (is specially formulated for the Southwest and Rocky Mountain Region).

by "El Rey" Stucco Co.

110 Rutherford N. E.
P. O. Box 6122

Albuquerque, New Mexico 87107
Phone (505) 345-1208



Specify
the
mistake-proof sauna.

The Viking Sauna. It's pre-designed by sauna experts. Pre-built for instant assembly. And pre-sold through national advertising and publicity. All you do is write it into the specifications.

Viking offers you a complete line of saunas—the only nationally advertised line. And every sauna in the line reflects the superior quality Viking is famous for. Features like interiors of Clear All-Heart Redwood, a choice of gas or electric heaters in a broad range of power, automatic solid state controls, and innovative designs like the new Econoline.

You can't go wrong when you specify a Viking Sauna.

**NEW MEXICO
MARBLE AND TILE CO.**
414 Second St., S. W. Albuquerque, N. M.
P. O. Box 834 • Phone 243-5541

Bradley.

Your No. 1 source
for quality-made Washfountains,
group showers, single-control
faucets, and washroom
accessories.
For schools, industry, institutions,
commercial and public buildings.



BRADLEY WASHFOUNTAIN CO.
9108 Fountain Blvd. • Menomonee Falls, Wis. 53051

Ad No. 69-343

Represented by

BARNETT & COMPANY
1501 N. Third St., N. W.
Albuquerque, N. M.
Area 505: 247-2428

Now Available State Wide:

CREATIVE CONCRETE PRODUCTS



*in 6 shapes, 11 sizes
Also available in colors
made in New Mexico by*

**AGP ALBUQUERQUE
GRAVEL PRODUCTS
COMPANY**



MR. STRUT

UNISTRUT

NEW MEXICO

**METAL FRAMING
TELESPAR TUBING**

movable partitions
wire mesh partitions
toilet partitions
steel shelving and racks

4820 PAN AMERICAN HIGHWAY, N.E. • P.O. BOX 3128
ALBUQUERQUE, NEW MEXICO 87110
PHONE 505 345-2405

SIMPSON

Strong-Tie® CONNECTORS



ALCO
ALBUQUERQUE LUMBER CO.

WHEN YOU SPECIFY SIMPSON

... you have selected the nation's largest and most comprehensive supplier of wood connector products. Simpson's leadership is due to superior engineering and design resources, advanced manufacturing capability, and responsiveness to facilitate usage and document the design and values. Simpson's quality production assures your clients and contractors of low, competitive prices, and inventories for fast delivery.



3825 EDITH BLVD., N.E.
PHONE 345-2511

VARIATIONS ON A THEME:

Spectra-Glaze®

SCORED glazed concrete UNITS

Reduce scale
with the
economy of
large
8 x 16 block.

⑤ Cataloged in SWEET'S

® Reg. U.S. Pat. Off., Canada
& other foreign countries by
THE BURNS & RUSSELL CO..

**FEATHERLITE BUILDING
PRODUCTS CO.** El Paso, Tex.

CREGO BLOCK CO.,
Albuquerque, N. M.

EMPIRE BLOCK CO.,
Santa Fe, N. M.

FEATHERLITE TILE CO.,
Lubbock, Texas

ALBUQUERQUE TESTING LABORATORY

Sub-soil Investigations
For Structural and Dam Foundations

**Two Drills and Crews now
available for Prompt Service**

Laboratory Analysis and
Evaluation of Construction Materials

**All work done under the supervision
of Registered Professional Engineers**

532 Jefferson St. N.E. — P. O. Box 4101
Phone AL 5-8916 Albuquerque
Phone AL 5-1322 New Mexico

McMillan & Associates, Inc. CONSULTING MATERIALS ENGINEERS



2501 Candelaria Road, N. E.
345-3681
Albuquerque, New Mexico

Experienced Personnel for:

- Laboratory and Field Testing of Construction Materials
- Subsurface Soil Investigations
- Plant Inspection and Calibration



ROCKY MOUNTAIN STONE CO.

*Beautiful . Enduring . Inexpensive
Natural Building Stone
.. from the Land of Enchantment*

3219 CLAREMONT AVENUE N. E.
ALBUQUERQUE, NEW MEXICO

344-2611



- ANTI-HYDRO integral waterproofing
- ARMORTOP chemical hardener
- A-H seamless deck membrane
- A-H 3-Way sealer

ARCHITECTURAL SPECIALTIES DIVISION

J. C. Baldrige Lumber Co.

Albuquerque

243-4546

TELEPHONE (505) 247-4131

ALBUQUERQUE, NEW MEXICO 87110

EDITH AT ARVADA, N.E.

POST OFFICE BOX 3247

THE MAYHEW COMPANY
NSL

PARTITION SPECIALISTS --

GLEN
O'BRIEN

Movable
Office
Partitions

SUPERIOR

Folding
Corridor
Partitions

SUPERIOR

Wire
Mesh
Partitions

WON-DOOR

Folding
Sound &
Fire
Partitions

Toilet partitions and movable
partitions stocked in
Albuquerque!