



A Home For The Apes

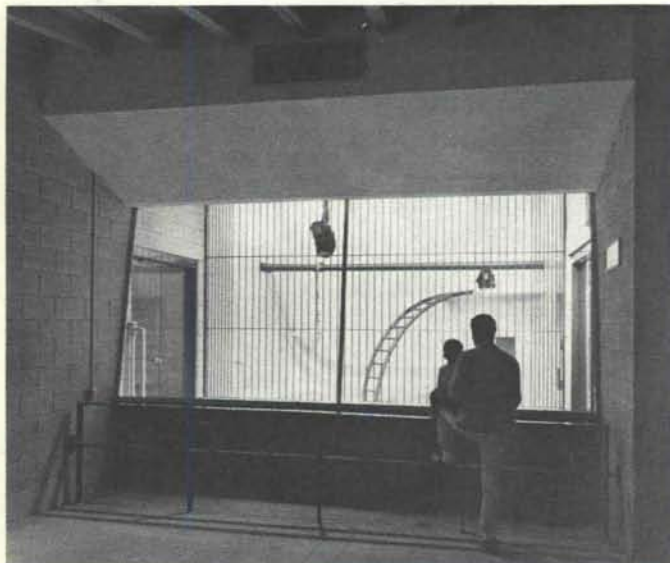
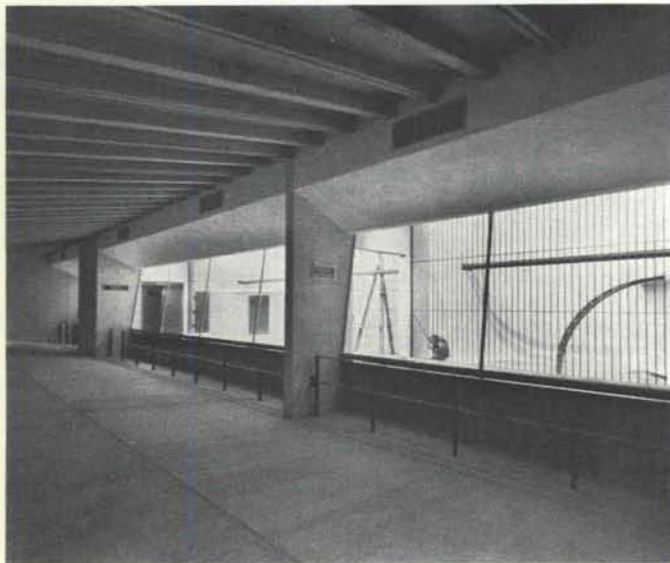
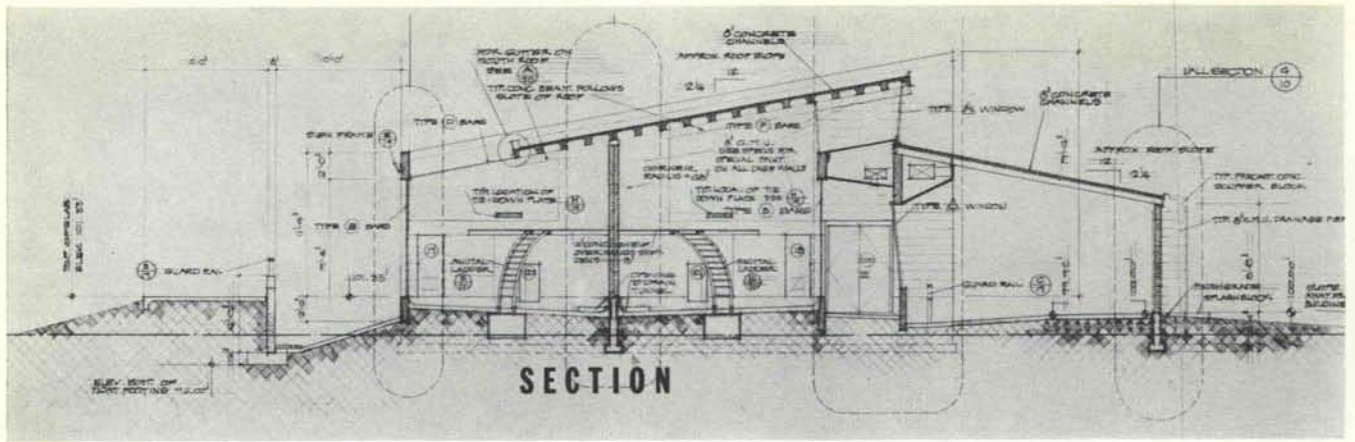
WRIGHT AND UNDERWOOD

ARCHITECT - ENGINEER

BRADBURY AND STAMM, CONTRACTORS

DICK KENT PHOTOGRAPHY

A MERIT AWARD — ALBUQUERQUE CHAPTER AIA — 1966



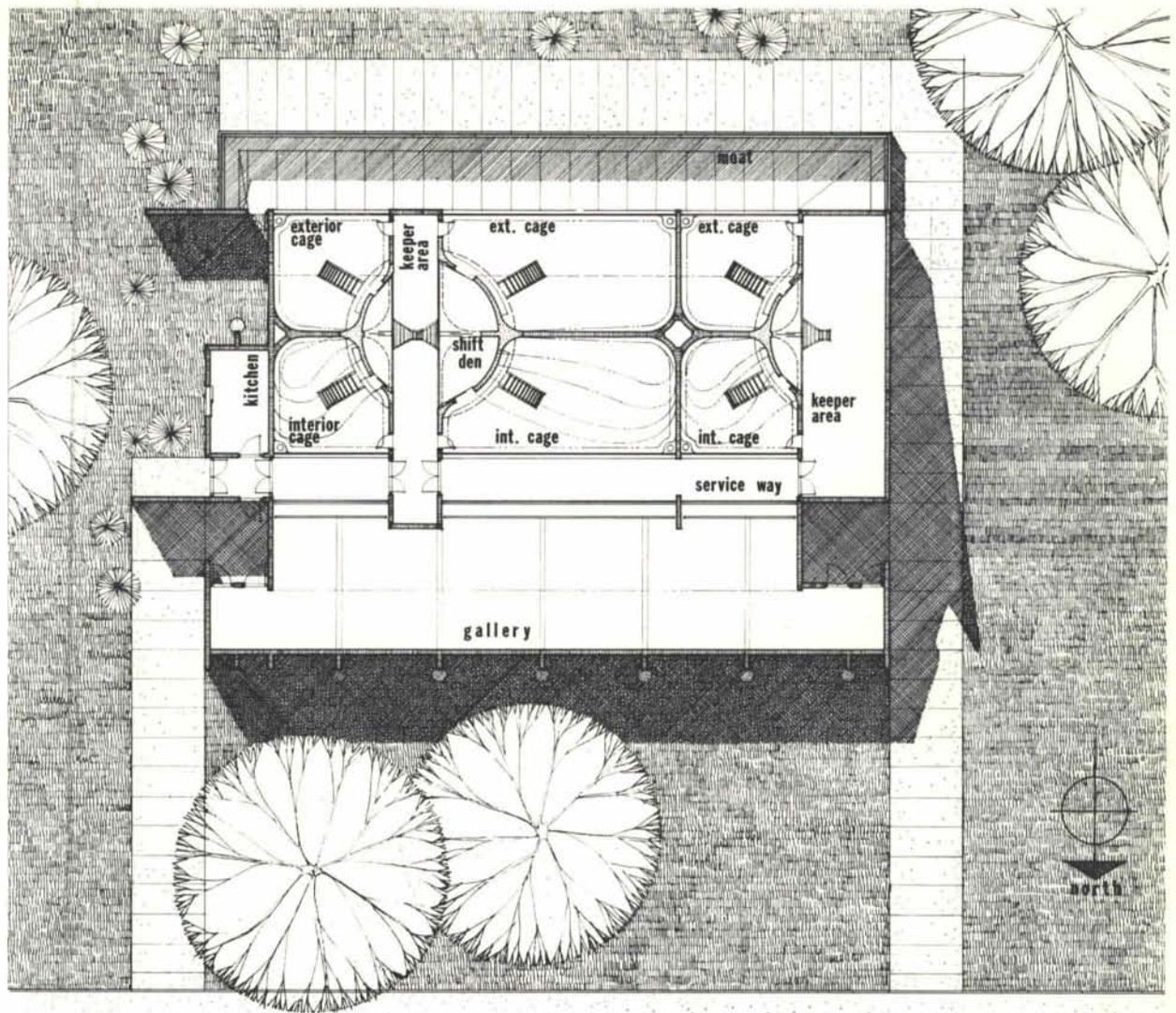
The form for the new Primate House at the Albuquerque Zoo is given by the cross-section which was carefully developed for the best exhibition purposes. The north facing clerestory is expressed in saw tooth fashion on the end elevations.

Natural light is admitted at the clerestory through canted glass which cuts down reflections. The gallery light level is held to a desirable minimum to insure best viewing with little or no reflection through the canted glass.

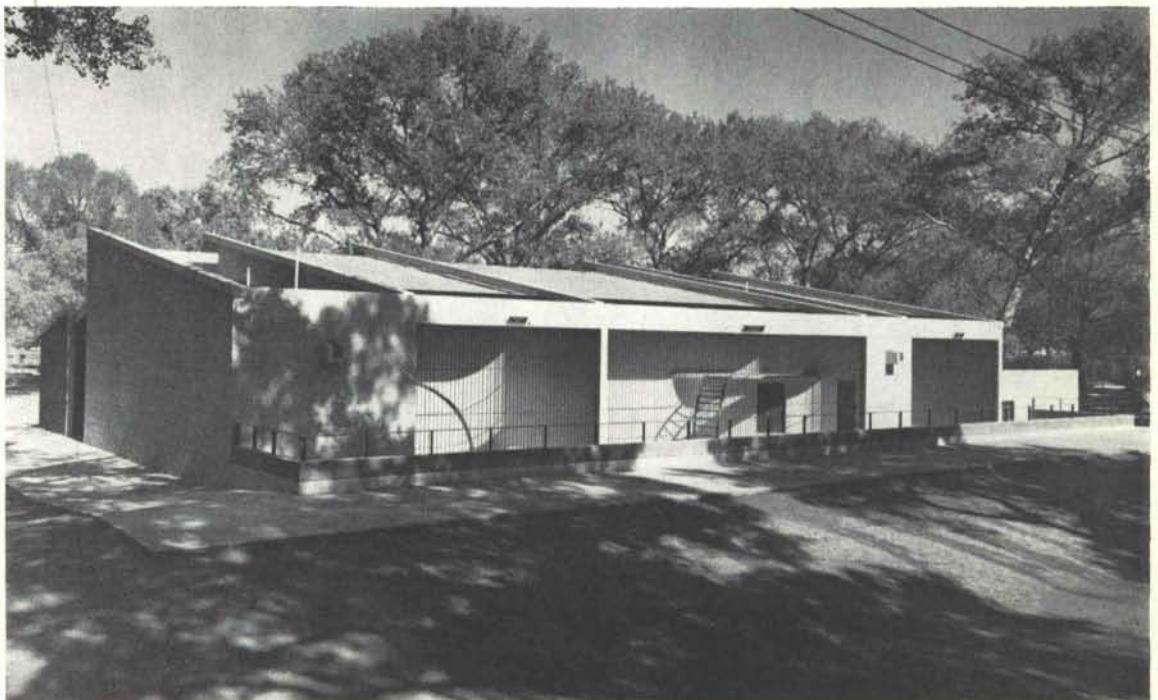
The mechanical system furnishes humidified warm or cool air at all times. The apes are extremely sensitive to respiratory diseases and a uniform humidity and temperature is mandatory.

Budget limitations reduced design to the barest essentials. Concrete masonry is the basic building material, which is honestly used and expressed.

Exterior landscaping will be under the direct responsibility of the City Parks Department.



FLOOR PLAN / SITE PLAN





Showrooms & Sales Offices

CREGO BLOCK CO., Inc.

Manufacturers of the finest Autoclave Blocks in New Mexico
Meeting or surpassing ASTM minimum code requirements

6026 Second, N.W.

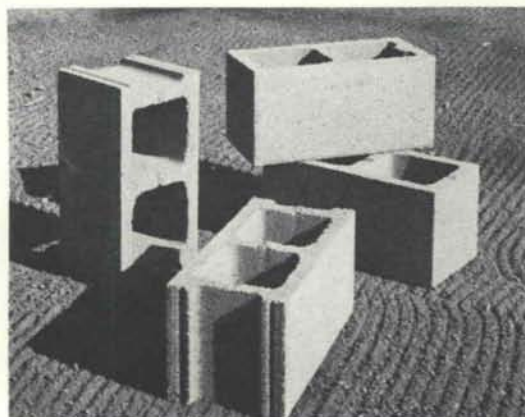
Albuquerque
344-3475 (505)

New Mexico
87107

ARCHITECTS — BUILDERS

Visit Our Showrooms—displaying such products as;

- Normal, all sizes of Scoria Blocks
- "SLUMPROK" Double faced hollowcore only by CREGO. Soft shadows & highlights, in 4 colors.
- SPECIAL, Lightweight (25#) Scoria Block with 1" sidewalls — extra large cores — only by CREGO —See Photo
- SHADOW, Sculptured & Sun Screen blocks in all sizes and varieties
- Miscellaneous materials of interest



Office Interiors

A DIVISION OF
NEW MEXICO SCHOOL AND
OFFICE SUPPLY COMPANY

Distributor of Herman Miller Furniture

Visit our display rooms
at
509 Second Street, NW
Albuquerque, New Mexico
(505) 247-0263

Furniture groupings for the standup worker, the sitdown worker, the straddler or the percher are assembled for your edification.



Researched and developed
by Robert Probst, Director of
Herman Miller's Research Division.

A new world in which to work

The ACTION OFFICE

Photo shows a sitdown worker's grouping



Design by George Nelson