

Northeast Elevation

LINCOLN COUNTY COURT HOUSE CARRIZOZO NEW MEXICO

Voll, Buffington and Nolan, Architects - Roswell

The design of the new Lincoln County Courthouse involved the razing of the original structure, the remodeling of an annex built in 1940, and the construction of new facilities. The work is to be realized in such sequence that no temporary offices will be required. When the new building is finished, offices formerly in the annex will be transferred to it; when the annex has been remodeled, offices from the old courthouse will be moved into it. Then the original building will be demolished. The site occupied by the old structure will become a public park until it is needed for possible future expansion. Such flexibility of plan and movement was necessarily accomplished by an asymmetrical grouping of one-story elements around the remodeled two-story annex. It is expected that any future additions will enhance the importance of the central vertical core.

The existing Courthouse Annex is to be enveloped by a metal screen with strong vertical elements of design. In addition to emphasizing its vertical mass and to frankly hiding the original elevations, this screen will offer an interesting contrast to the stone masonry

of the new construction. The screen is also to be repeated in certain other areas of the new building.

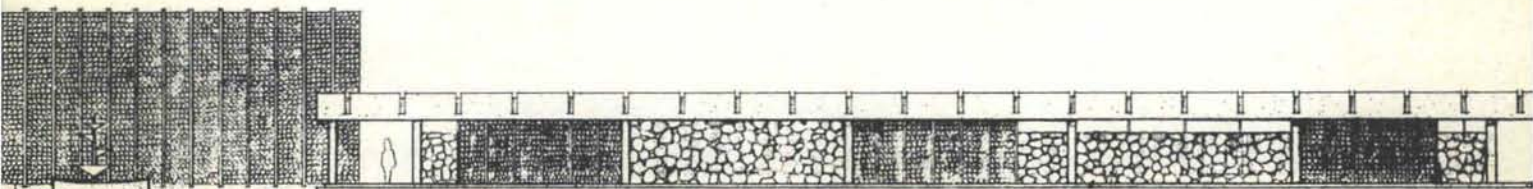
Except for the fountain on the highway side of the building, no attempt was made to establish a "front" elevation. There is no one main entrance as entry is readily gained from any street.

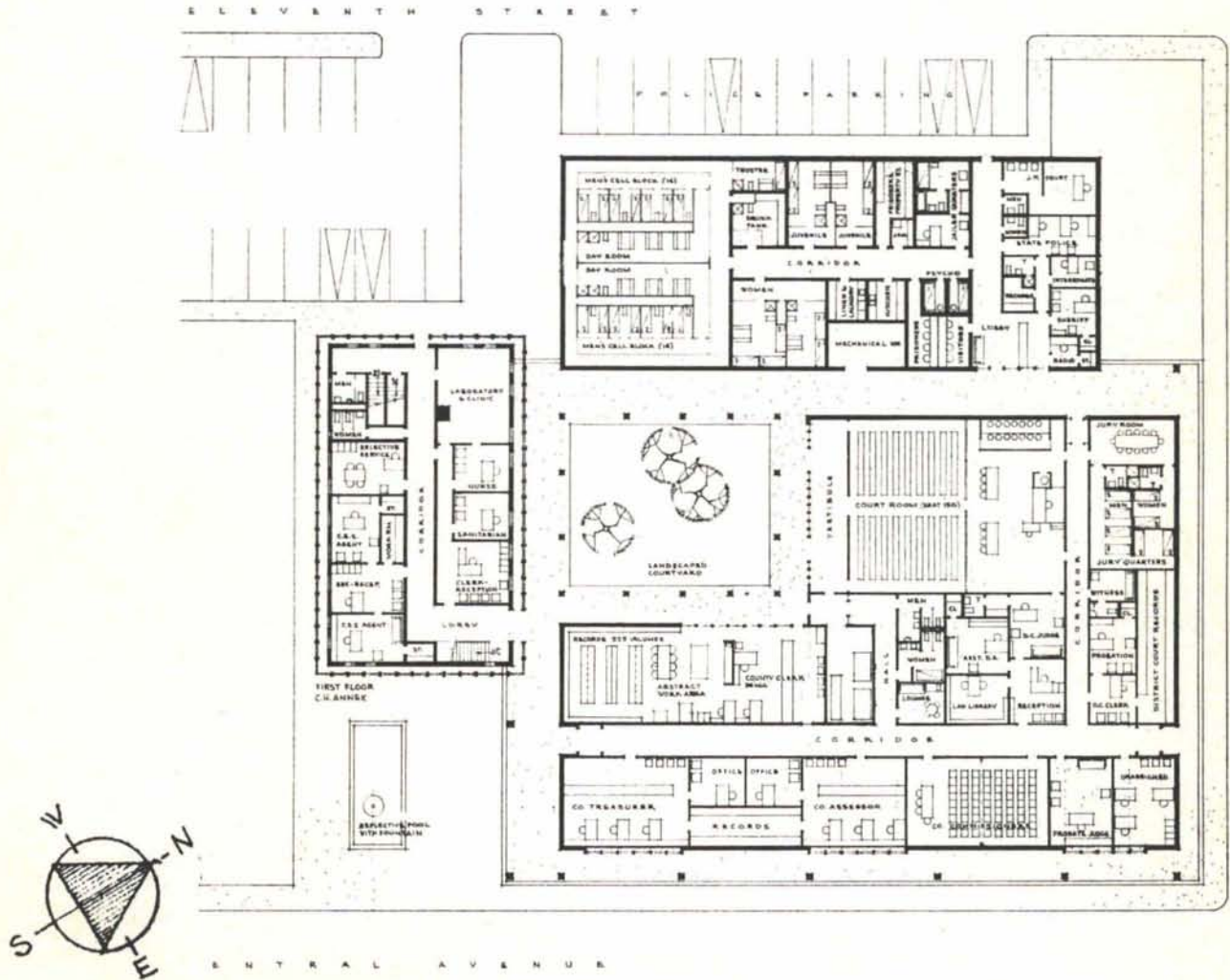
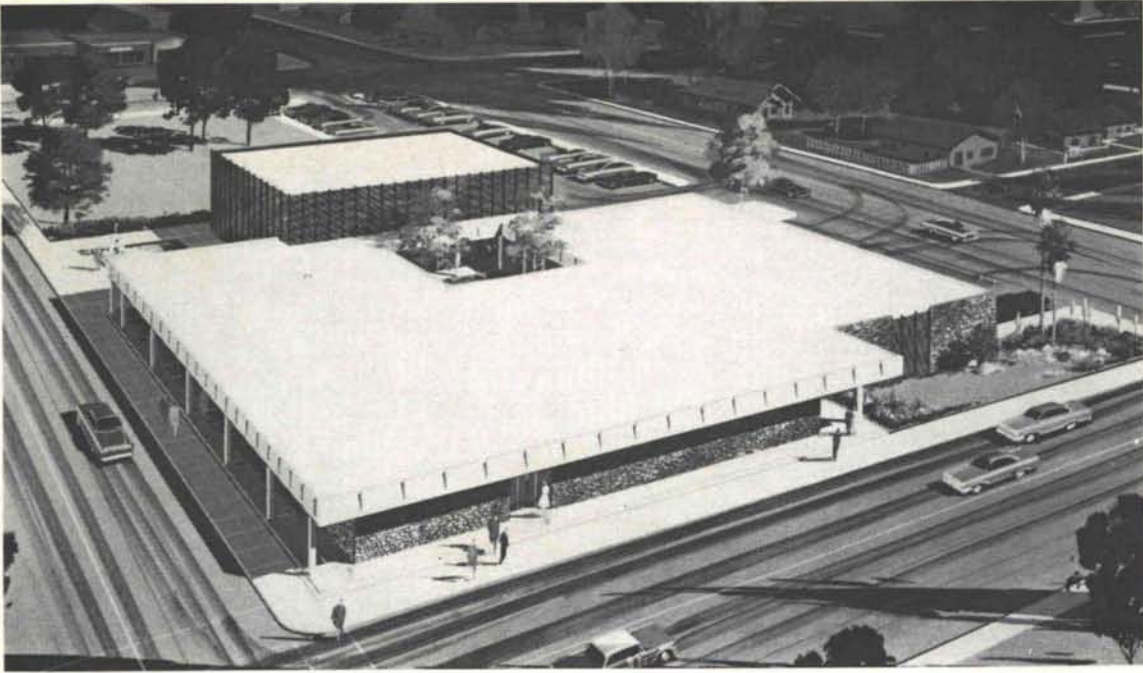
In designing the new courthouse, the architects attempted to create a building which would reflect the architectural and physical character of the area. Carrizozo is a small, relatively new, frontier-type community set on the edge of a vast and spectacularly beautiful desert valley. Therefore, neither the ancient pueblo nor a glass cube seemed to meet the demands of the location.

The columns and the waffle roof slabs of the new concrete structure will be cast in place. Exterior walls will be veneered with Corona stone, and the facia will be precast aggregate panels. The waffle roof slab will be exposed on the interior. Floors will be terrazzo or concrete, and the building will be conditioned by hot or chilled water.

Contractor: Cee-Bee Construction Company, Carlsbad.

Southeast Elevation





When your plans pose communications problems, call us collect for free consultation and advice



Our Communications Consultants can now offer you full no-obligation consultation services on (1) space required for switchboards or dial equipment, (2) requirements for communications ducts, (3) placement of communications ducts and outlets to individual offices, (4) building entries for large cables and (5) electrical outlets to be used in conjunction with telephone equipment.

Whenever you encounter communications problems in the design of multi-residential or non-residential buildings, call Albuquerque, collect, 247-7285. We'll make arrangements for a prompt visit by one of our engineers.

MOUNTAIN STATES TELEPHONE

NOTE TO RESIDENTIAL DESIGNERS: For full information on our free pre-wiring service, call your local telephone manager.

OUR 28TH YEAR CLIMATE DESIGNING
PAINT FOR THE SOUTHWEST

HANLEY'S *and the*

COLOR GUILD PRESENTS  NEW WORLD
OF COLOR

IN ARCHITECTURAL
QUALITY PAINTS



SUNFOE
AMBASSADOR

HANLEY PAINT MFG. CO., INC.

EL PASO, TEXAS
PH. 532-6921
755-9821

ALBUQUERQUE
NEW MEXICO
PH. 265-1524

We invite you to consider us as
your concrete headquarters
Albuquerque's Quality Concrete.

**Albuquerque Gravel
Products Company**

Albuquerque, New Mexico

600 John St., SE Phone CH 2-5265

IN NEW MEXICO

Specify

Climate Built

FOR THE ARID SOUTH-WEST

No shrinkage, no moisture to lose before stabilizing. Every Glen-Mar door is built with the natural moisture content of this area (6%).

Glen Mar
DOORS OF QUALITY

An Open - and - Shut
Case of Superiority!

Location of the Glen Mar plant in dry, dry Phoenix achieves "Balanced Moisture Control" . . . low moisture levels in all component parts of this Glen-Mar Door! Proof: just open and close it . . . an Open and Shut Case of Superiority!

NOW Proudly Distributed
Throughout New Mexico by:

APACHE Lumber Co.
100 Mescalero, NW Tel. 345-1633
ALBUQUERQUE, New Mexico

HOW
WOULD
YOU
COOL
AND
HEAT... ?

The largest pavilion at the New York World's Fair? Or the world's busiest airport? Or New Mexico's tallest building? Or a 25-acre shopping center? Or a modern high school? Or your own home?

If you want the job done right
...do it with gas.

In homes, businesses, factories, schools — wherever there is a need for climate control — the demand for dependable gas is growing! Gas-fired equipment is produced today by more manufacturers than ever before. From small residential units to giant industrial systems, gas equipment is dependable, efficient, safe, compact, flexible — the most economical and longest-lasting of all heating and cooling systems.

It is *gas* which cools and heats . . . the Ford pavilion and 28 other major pavilions at the New York World's Fair, New York International Airport, the Bank of New Mexico's skyscraper, Rushfair shopping center in El Paso, beautiful El Paso Technical High School, and many of the finest homes all across the country. Think about it.

SOUTHERN UNION
GAS
COMPANY

How to be sure you get the fire rating you specify

REDUCE YOUR SUPERVISION TIME, TOO

With Zonolite Mono-Kote*, you get the same density on the *job* as you do on the *fire tests*. Mono-Kote is sprayed on the job just as it is tested. It sets hard because it contains gypsum plaster, the time-honored fireproofing material. It's not tamped to make it dense because it needs no tamping. *so you are sure to get application of Mono-Kote as tested, on your job.* You get exactly the fireproofing you specify. For details, contact your Zonolite representative.

Southwest Vermiculite Co.

1822 First Street, Northwest, Albuquerque, New Mexico

Phone CHapel 7-2244

ZONOLITE MONO-KOTE SPRAY-ON FIREPROOFING

* Reg. trade mark of Zonolite Div., W. R. Grace & Co.

ALBUQUERQUE TESTING LABORATORY

Sub-soil Investigations
For Structural and Dam Foundations

**Two Drills and Crews now
available for Prompt Service**

Laboratory Analysis and
Evaluation of Construction Materials

**All work done under the supervision
of Registered Professional Engineers**

532 Jefferson St., N.E. — P. O. Box 4101
Phone AL 5-8916 Albuquerque
Phone AL 5-1322 New Mexico



TINGLEY COLISEUM
New Mexico State Fair Grounds

Bradbury and Stamm Construction Co., Contractors
Brittelle - Ginner & Dekker, Assoc. Arch. - Eng.

CREGO MASONRY UNITS USED THROUGHOUT

CREGO BLOCK CO., Inc.

6026 - Second NW
Albuquerque, N. Mexico
344-3475

1311 Siler Road
Santa Fe, N. Mexico
983-7341

Makers of the finest Autoclave Blocks in New Mexico
Meeting or surpassing ASTM minimum code requirements

ARCHITECTS — BUILDERS

Visit Our Showrooms—displaying such
products as;

- **Normal**, all sizes of Scoria Blocks
- **"SLUMPROK"** Double faced hollowcore only by CREGO. Soft shadows & highlights, in 4 colors.
- **SPECIAL**, Lightweight (25#) Scoria Block with 1" sidewalls — extra large cores — only by CREGO —See Photo
- **SHADOW, Sculptured & Sun Screen** blocks in all sizes and varieties
- Miscellaneous materials of interest

