

1-16-1908

Santa Fe New Mexican, 01-16-1908

New Mexican Printing Company

Follow this and additional works at: https://digitalrepository.unm.edu/sfnm_news

Recommended Citation

New Mexican Printing Company. "Santa Fe New Mexican, 01-16-1908." (1908). https://digitalrepository.unm.edu/sfnm_news/6832

This Newspaper is brought to you for free and open access by the New Mexico Historical Newspapers at UNM Digital Repository. It has been accepted for inclusion in Santa Fe New Mexican, 1883-1913 by an authorized administrator of UNM Digital Repository. For more information, please contact disc@unm.edu.

CHARGES AGAINST COUNTY BOARD

Are Filed With
Governor
Curry

IRREGULARITIES ALLEGED

Matter Has Been Referred to
Attorney General Hervey
for Full Report.

In today's issue of the Albuquerque Morning paper there appeared a set of charges made by the organization styled as "The Commercial Club" of this city, signed by A. Staab and others, charging the board of county commissioners of Santa Fe county with various derelictions of duty, mistakes in making payments, allowing illegal accounts, and granting over payments.

The New Mexican republishes the charges that the people might know. They are in the hands of Governor Curry, and it is understood that the charges and specifications will have careful and prompt investigation. They have been referred to Attorney General Hervey.

The charges are as follows:

The Charges.

Santa Fe, N. M., Jan. 15, 1908.

Hon. Geo. Curry, Governor of New Mexico, Santa Fe, N. M.:

Sir—The Commercial Club of Santa Fe county, by its executive committee would respectfully beg leave to submit the following charges against the board of county commissioners of Santa Fe county, and as charges and specifications thereunder, do allege that:

Charge No. 1.—That said board of county commissioners have on divers and sundry occasions made and authorized appropriations from the funds of Santa Fe county, knowing the said appropriations to be illegal and unauthorized. Specification 1: At a meeting of said board of commissioners of Santa Fe county, held in Santa Fe on the 23d day of December, 1907, said board directed that a warrant be drawn in favor of A. B. Renehan, who represented himself as attorney for the First National Bank of Santa Fe, in the sum of \$1,600 to satisfy a judgment obtained March 5, 1903, the certified copy of which is hereto attached and which shows that said last mentioned judgment was made on a prior judgment obtained by said national bank on February 15th, 1896, but because of action upon which said last mentioned judgment was obtained is not now reasonably possible of ascertainment as the complaint in said last mentioned suit is not now in the files of the district court of Santa Fe county, whereabouts being unknown, and said warrant in favor of A. B. Renehan, attorney, was drawn from a fund of delinquent taxes, paid into the county of Santa Fe under chapter 65 of the laws of 1907, which said law limits the use of the funds so derived for the purpose of paying the debts of said county for the years 1901, 1902, 1903, 1905. And further limited by a provision for "pro rata" payment of said debts.

The basis of the obligation, if any, upon which these judgments rest, being a claim prior in point of time to the year 1896; this appropriation was in violation of law, but if such alleged claim was one of the debts of the years mentioned and property subject to payment from said fund the law was further violated by failure to pro rata of all the debts against the county for such year, and amounted to a preference of creditors of this judgment creditor had a valid claim.

Further than the legal objections referred to above it appears from an investigation of this transaction that the First National Bank was imposed upon in this matter, its name being used without authority and some time after it had parted with any interest it may have had in said judgment, said bank having resigned said claim to Arthur Seligman, as your informant has been informed and believes.

It also appears that no verified claim upon which the warrant for \$1,600 was based, was before the board of county commissioners at time said alleged account was allowed and that the verified account filed a day later was never approved by the board as required by law.

Specification No. 2.—That on June 7th, 1907, Max. Frost, as an alleged attorney for H. B. Payne, his father-in-law, but in reality for himself and others, as your informant is informed, and believes, obtained a default judgment against the county of Santa Fe in case No. 5060, civil docket, Santa Fe county, for \$2,046.84 with costs of \$12.25, or a total of \$2,059.09 with interest at 6 per cent per annum from

(Continued On Page Eight.)

CASES ARGUED AND SUBMITTED

Supreme Court May Adjourn Tomorrow—Three More Applicants Admitted to the Bar.

The supreme court of New Mexico continued in session today, reconvening this morning at 10 o'clock. There were present:

Chief Justice William J. Mills, Associate Justice John R. McFie, Associate Justice Frank W. Parker, Associate Justice William H. Pope, Associate Justice Edward A. Mann and Associate Justice Ira A. Abbott. Jose D. Senna, clerk of the court, was at his post. The United States was represented by U. S. District Attorney D. J. Leahy and the Territory by Attorney General James M. Hervey, Deputy U. S. Marshal Harry P. Bogh was in attendance representing U. S. Marshal C. M. Foraker.

Two cases were argued and submitted at the forenoon session today, both of which were civil actions. The first was the case of S. C. Smith, appellee, versus Darius Hicks, appellant, which came up on appeal from the district court of Chaves county. The second was the case of the Home Savings Bank of Des Moines, Iowa, appellee, versus E. S. Woodruff, et al., appellants, which was also taken on appeal from the district court of Chaves county.

Three more applicants for admission to the bar appeared before the examining committee of the supreme court today, and upon recommendation of that body licenses were granted to all three.

It is expected that the supreme court will adjourn tomorrow evening until the latter part of February.

No opinions were handed down this morning.

Cases Before Court at Afternoon Session Yesterday.

Following are the cases before the court at the afternoon session yesterday and what was done in each:

No. 1180. Eloisa L. de Bergere, et al., appellees, versus Luciano Chaves, et al., appellants. Appellants granted thirty days to file motion for rehearing.

No. 1192. First National Bank of Tucuman, appellee, versus C. Adams, et al., appellants. Motion to reinstate granted.

No. 1213. Peter Sherman, et al., appellees, versus Darius Hicks, appellant. Submitted on briefs.

No. 1215. Eastern Railway of New Mexico, et al., appellees, versus John Mulligan, appellant. Submitted on briefs.

DEATH CLAIMS WEALTHY BREWER

John F. Betz, One of Philadelphia's Foremost Citizens, Victim of Grim Reaper.

Philadelphia, Jan. 16.—John F. Betz, one of the best known brewers in the country and one of Philadelphia's wealthiest citizens, died at his home here today after a long illness. He was born in Germany in 1811 and was brought to this country when an infant. He was largely interested in several financial institutions in Philadelphia.

Betz although a Lutheran, was a chevalier of St. Gregory by grant of the late Pope Leo XIII. This was an unusual honor. His first wife was a member of the well known Catholic family of Stuttgart in Germany.

His son, John F. Betz, Jr., will succeed his father in the extensive Betz interests.

HARRIMAN MUST ANSWER QUESTIONS

Federal Judge Rules That He Shall Give Testimony Before Interstate Commerce Commission.

New York, Jan. 16.—E. H. Harriman was directed in a decision given by Judge Hough in the United States circuit court today, to answer all questions propounded to him by the Interstate Commerce Commission except those relating to the purchase of United Pacific and Southern Pacific railroad stock in connection with the dividend of August 1906. Judge Hough also directed Otto H. Kuhn, of Kuhn, Loeb and company, bankers and brokers, to answer all questions asked him by the Interstate Commerce Commission.

STANDARD CONTROLS OIL BUSINESS OF THE WEST.

New York, Jan. 16.—More than 99 per cent of the oil business in Colorado, Wyoming, Utah, Montana and New Mexico is controlled by the Standard Oil company, according to testimony adduced at the hearing of the government's suit to dissolve the corporation. Christian Dredger of the statistical department of the Standard Oil company, identified statements certifying to the above percentage.

THAW'S MOTHER WILL TESTIFY

Leaves for New
York to Attend
Trial

FORMER TUTOR ON STAND

Private School Instructor
Tells of Defendant's Un-
controllable Temper.

New York, Jan. 16.—More evidence as to the alleged irrational conduct on the part of the defendant was offered at the Thaw trial today, the most impressive witness being Abraham R. Beck, an uncle of former Assistant Attorney General James M. Beck. The elder Beck taught a select school for boys in Pennsylvania in 1881 and 1882 and young Thaw was one of his pupils.

Beck described Thaw as a boy of ungovernable temper and produced a letter from Mrs. William Thaw, mother of the defendant, who said she feared Harry's mind was unbalanced as he was so different from the other four children.

One of Thaw's eccentricities which it was said today would soon be testified to was his sending of eighty-four pounds of beef to Evelyn Nesbit one morning when she was ill. The attorneys have a receipt for this meat.

Mrs. William Thaw, mother of the defendant, will be called as a witness either this afternoon or tomorrow morning.

Mother Leaves for New York.

Pittsburg, Jan. 16.—Mrs. Mary C. Thaw, mother of Harry K. Thaw, left last night for New York for the purpose of attending the trial of her son.

BURYING VICTIMS BOYERTOWN DISASTER

Bodies to Be Interred in Plot Together—Space Left in Center for Monument.

Boyletown, Pa., Jan. 16.—This little borough which lost one-fifth of its population in the opera house horror Monday night, has today turned to the task of burying its dead. All night long scores worked at the morgues in preparing the identified bodies for removal to their late homes or to the cemetery.

More than sixty death certificates were issued up to ten o'clock this morning and most of the bodies will be buried during the day without funeral ceremonies. There is not a clergyman in the town able to conduct the services.

The borough has set aside eight lots in the cemetery for the burial of the unidentified dead. In the center of the plot a space will be left for a monument. The scenes about the morgues today were the same as yesterday.

When daylight dawned today large crowds were clamoring for admittance and when the doors were open at 7 o'clock they pushed themselves in in a vain endeavor to locate some loved one or missing relative. It is believed that more than fifty will never be identified.

TWO KILLED IN PITCHED BATTLE

Indiana City Scene of Bloody Conflict Between Peace Officers and Hungarian Laborers.

Chicago, Ill., Jan. 16.—Two men were killed, one policeman fatally wounded and several workmen badly injured in a pitched battle last night between three policemen and thirty Hungarian laborers at Gar, Indiana. Guns and revolvers were the weapons used. Though outnumbered, ten to one, the policemen stood their ground until reinforcements arrived, when fifteen men were captured. The fight lasted several hours.

Several Hungarians destroyed a tent of a negro laborer and when he sought redress in the Hungarian's camp, he was fired upon. A general battle began when the policemen sought to serve warrants for the arrest of the assailants of the negro.

THIS MINING COMPANY ALSO CUTS DIVIDEND.

New York, Jan. 16.—The directors of the Boston and Montana Consolidated Copper and Silver Mining company, one of the constituent companies of the Amalgamated, today declared a quarterly dividend of \$2 per share and \$1 extra. This compares with a \$2 regular and a \$4 extra dividend three months ago.

Advertising pays. Try it and see.

VERY PRETTY HOME WEDDING

Miss Easley Bride
of Angus Mc-
Gillivray

HONEYMOON TRIP TO COAST

Will Live on Extensive Ranch
Near Estancia Upon
Their Return.

Standing beneath a beautiful floral bell of white carnations which was suspended in the wide doorway between two parlors Miss Julia Ethel Easley of this city and Angus McGillivray of Estancia, were united in marriage at 4 o'clock this afternoon at the home of the bride's parents, Mr. and Mrs. Charles F. Easley, on Galisteo street. A dainty collation was served after the wedding ceremony and tonight the bride and bridegroom will leave on a honeymoon trip to California.

House Prettily Decorated.

The Easley residence was converted into a veritable bower for the wedding. The color scheme was in pink and white, carnations being the prevailing flower. The two parlors which are separated by folding doors were very prettily decorated in white and the dining room in pink, while pretty touches of green were made with delicate sprays of smilax. Bride's roses were also used in the decorations.

The bride never looked prettier than she did on her wedding day, attired in a handsome traveling costume of blue cloth, which served as her bridal gown. She carried a shower bouquet of bride's roses but did not wear a veil. Being a quiet home wedding there were no bridesmaids, best man or other attendants. The bride was given in marriage by her father, Rev. J. W. Purcell, pastor of the First Presbyterian church, who was the officiating clergyman, using the single ring ceremony.

Wedding Witnessed By About Forty

Guests.

The wedding guests who numbered about forty were limited to the members of the two families and the most intimate friends of the contracting couple. Formal cards announcing the marriage will be mailed tomorrow. It was the desire of the principals that the wedding should be a very quiet affair, and their wishes on the subject were carried out accordingly.

Hearty congratulations and well wishes were bestowed upon the bride and bridegroom after the solemn vows joining them as wife and husband had been spoken, after which the company repaired to the dining room where an elegant luncheon was served. The newly wedded couple will leave this evening on a bridal tour to California points.

Will Reside on Ranch Near Estancia.

Mr. and Mrs. McGillivray upon their return from their honeymoon trip will make their home on a ranch near Estancia. Mr. McGillivray is engaged in the sheep raising business and has one of the finest ranches in the valley surrounding Estancia. He and his three brothers came to this country from Scotland some years ago and engaged in the sheep and wool industry in the valley when it was still an open range. They prospered as the years went by and are now among the wealthiest ranchmen in the district. The bridegroom of today is well known throughout the territory and has a host of warm friends.

Bride Was Born in Santa Fe.

Mrs. McGillivray, nee Easley, is a charming and talented young woman, who was born and reared in Santa Fe. She has been extremely popular in local society because of her pleasing personality and many accomplishments. After graduating from the local public schools she attended Colorado College at Colorado Springs and later studied a year at the Boston Conservatory of Music.

Among the guests at the wedding were Mr. and Mrs. Duncan McGillivray, Mr. and Mrs. George H. Van Stone, Miss Lena Booth, John McGillivray, Allan McGillivray, and Fred T. Fisher, all of Estancia; Mrs. Lee F. Easley of Trinidad, Colorado; W. S. Hopewell, of Albuquerque, and William McIntosh, of McIntosh. The Messrs. McGillivray are brothers of the bridegroom.

RICHEST WOMAN IN ILLINOIS DIES AT PEORIA

Peoria, Ill., Jan. 16.—Mrs. Lydia Bradley, one of the richest women in Illinois, died this morning, aged 92 years. She was particularly known for her philanthropy, having endowed Bradley Polytechnic Institute, besides contributing much to charity.

BOARD MAKES BUT FEW RAISES

Assessment Values Remain About the Same as Last Year—Increase in Railroad Taxation.

The Territorial Board of Equalization which was in session three days this week and finally adjourned yesterday afternoon made but few changes in the assessed valuation of taxable property in New Mexico. The El Paso and Southwestern Railway will be subject to taxation this year for the first time, and with the additional taxes from this source and the increases made on other railroad property it is estimated there will be a gain in the railroad item of about \$2,500,000.

One hundred and sixty miles of main line of the Southern Pacific Railway was fixed at a valuation of \$8,500 per mile, this being an increase per mile over last year of \$500. Including machine shops, storehouses, and other taxable property the assessment of this road for the present year will be at the rate of \$9,000 per mile.

In the assessment of the Atchison, Topeka and Santa Fe Railway north of Albuquerque increases were made, also in real estate, railroad shops, etc., which will bring the assessed valuation on the mileage to about \$9,000 per mile.

Additions were made to last year's assessment value of the branch line of the Santa Fe railway in Luna, and Grant county. Three hundred and fifty miles of the El Paso and Southwestern lines were ordered assessed at \$6,500 per mile and the county authorities were directed to assess depot grounds, machine shops and storehouses which will raise the valuation per mile of that road to about \$7,000.

The lands of the Santa Fe Pacific railway in Bernalillo, Valencia, and McKinley counties were assessed at 30 cents per acre. This is a raise of 5 cents per acre. The lands owned by the Santa Fe system in Roosevelt county, being partly agricultural, were ordered assessed at \$1.25 per acre. These items will increase the taxable valuation of railroad property of all kinds for the present year about \$2,500,000 over the year 1907.

The board made no change in the assessment values on live stock. The rates this year will be the same as last year and this was owing to the statements that the outlook for the live stock owners including the sheep raisers and cattle growers was not as promising as it was at this time a year ago, and that many interested in these industries had suffered considerably during the past few months.

The valuation of agricultural, grazing and mineral lands remains practically the same. All agricultural lands under cultivation under what is known as the Campbell dry culture system were ordered assessed at \$3 per acre and up, according to location and quality of the soil.

The members of the board were earnest and diligent but evidently exhibited no desire to make increases although some strong pressure was brought to bear in that direction. Under the statutes the board has not as much power to fix rates as it ought to have and can only fix valuations on certain kinds of taxable property. The statutes it is urged should be so amended as to give the board distinct power over all tax matters and to dictate valuations on all classes of property with no appeal from its decisions.

The board has no control over taxation matters concerning the Santa Fe Pacific railway running from Albuquerque to the Arizona line, as this road is chartered by the United States and the rate of taxation is fixed by Congress. The members of the board are of the opinion that the federal statutes should be so amended as to vest in the board the power of fixing the valuations of the lines of this road in the territory and adopted a resolution calling on Delegate W. H. Andrews to have such an amendment to the existing statute passed if possible.

NEW SWEDISH KING OPENS PARLIAMENT

Gustave in Speech From Throne Promises to Fulfill His Duty—To Resubmit Suffrage Bill.

Stockholm, Jan. 16.—The formal opening of the first Parliament under the reign of King Gustave took place in this city today with simple ceremonies. In a speech from the throne King Gustave promised always to try and fulfill his duty. He announced to the people that the suffrage bill adopted at the last session of the Rigsdag would be resubmitted to the house for final approval, but said there was no intention of giving a franchise to the women for the present.

PAUL J. SOURS APPOINTED POSTMASTER AT DENVER.

Washington, Jan. 16.—President Roosevelt today nominated Paul J. Sours to be postmaster at Denver, Colorado.

HORRIBLE TRAGEDY OCCURS AT ESTANCIA

Two Young Men
Are Burned to
Death

SET FIRE TO JAIL

Flames Got Beyond Control
—Cremated Before They
Could Escape.

Special to the New Mexican.

Estancia, N. M., Jan. 16.—A deplorable tragedy, costing the lives of two persons, occurred here at 5 o'clock this morning when a small frame building used as a jail was completely destroyed by fire and two prisoners, R. B. Nisbett, Jr., and Cecil Whitlock, were suffocated and their bodies cremated before they could be rescued from the burning structure.

Were Arrested For Disturbing the Peace.

Nisbett and Whitlock, both sons of highly respected families here, were arrested late last night by Deputy Sheriff S. A. Nisbett, a brother of the former, for disturbing the peace and discharging firearms within the limits of a settlement. Both young men were drunk, it is alleged, and at the time of their arrest were endeavoring to kill two pet lobo wolves in the yard of the residence of Peterson Brothers, local real estate men. The Petersons exchanged several shots with Nisbett and Whitlock, but no one was hit.

Could Not Bear Disgrace; Sought to Escape.

The boys were taken to jail and locked up for the night. It is presumed that they awakened this morning and finding they were in jail for the first, did not wish to be thus disgraced and set about to regain their freedom. While endeavoring to burn a hole big enough for them to crawl through, the flames got beyond their control, and added by a high wind and the dryness of the building, the structure was consumed before they had a chance to escape. Their bodies, charred beyond all recognition, were found in the ruins.

Movement Started to Close Saloons.

The tragedy has caused widespread sorrow and a movement has been already started to close the saloons and make this a temperance town. A petition is being circulated this afternoon with this end in view and already it has received many signatures.

The parents of the two victims are grief stricken. Nisbett was a son of R. J. Nisbett, justice of the peace here. He recently returned from the Philippines, where he served in the army and was honorably discharged.

Whitlock's father is a well-to-do ranchman.

An inquest is being held this afternoon.

PANAMA CANAL TO COST \$300,000,000

This is Estimate Furnished by Secretary of War Taft Who Urges Special Legislation.

Washington, Jan. 16.—Secretary Taft appeared before the Senate committee on Inter-Oceanic Canals today and gave the committee information concerning the Panama canal project and to offer suggestions for legislation. He gave a complete review of the conditions affecting the canal and quoted information he had received from various officials connected with the work. He expressed the opinion that the canal could be completed within six years from next July and that its ultimate cost would be approximately \$300,000,000, including the purchase price.

RECEIVER NAMED FOR DALLAS BANK

Large Private Institution in Texas Metropolis Forced to Wall By Heavy Withdrawals.

Dallas, Texas, Jan. 16.—The Western Bank and Trust Company, capitalized at \$500,000, passed into the hands of an assignee last night. Heavy withdrawals recently is assigned as the reason for the failure. The liabilities are given as \$1,054,104. The assets are not stated, but it is said that the bank will pay out in time. The company is a private institution.

AMALGAMATED CUTS DIVIDEND IN HALF.

New York, Jan. 16.—The quarterly dividend of 1-2 of one per cent was declared by the Amalgamated Copper Company today. The previous quarterly dividend was one per cent.

SANTA FE NEW MEXICAN.

THE NEW MEXICAN PRINTING COMPANY, PUBLISHERS.
MAX FROST, Editor. JOHN K. STAUFFER, Sec'y-Treas.
EDWIN F. COARD, City Editor.

Entered as Second Class Matter at the Santa Fe Postoffice.

RATES OF SUBSCRIPTION.	
Daily, per week, by carrier . . . \$.20	Daily, six months, by mail . . . 3.75
Daily, per month, by carrier75	Weekly, per year 2.00
Daily, per month, by mail65	Weekly, six months 1.00
Daily, per year, by mail 7.00	Weekly, per quarter75

OFFICIAL PAPER OF SANTA FE COUNTY.

The New Mexican is the oldest newspaper in New Mexico. It is sent to every postoffice in the Territory, and has a large and growing circulation among the intelligent and progressive people of the Southwest.



HOW THE DEMOCRACY HAS COME TOGETHER.

The contrast between conditions in the two great political parties of the nation is so marked at this, the commencement of the presidential campaign of 1908, that it is worthy of careful attention and close study by thoughtful citizens who believe in voting intelligently and from patriotic motives in the coming presidential election.

In the Republican party it is a free race for a dozen men who are candidates and every one of them is of the kind of citizens whose capabilities, standing, and character are thoroughly known and who have been prominent in public life for years. On the Democratic side it seems to be Bryan the "peerless" and Bryan only.

It is passing strange that a great political party that has the record of the Democracy should have sunk to such a level but here it is and in the words of the "great and good" Grover Cleveland "it is a condition and not a theory that confronts the Democratic party and the electors." It is very graphically and interestingly described editorially by the Washington Post, the paper holding that the political situation on the Democratic side of the hedge is marvelously simple and—hopeless. The two wings have flapped together—after a fashion. More than 3,000,000 Democrats would rather go to defeat with Bryan than to victory with any other candidate. At least 2,000,000 are willing that Mr. Bryan shall be nominated in order that a third defeat may rid the party of its old man of the sea.

There is not the slightest doubt that the opponents of Mr. Bryan in the Democratic party have it in their power to control more than one-third of the total membership of the national convention and thus compass the defeat of the "Matchless and the Peerless." To what good end? The nomination of any other, even a silver man of 1896, like Governor Johnson or Senator Culberson, would enrage the Bryan-or-bust crowd and the ticket would be knifed as viciously as Parker was in 1904.

To be victorious, any ticket the Democrats may nominate must get ninety-five votes in the electoral college that were cast for President Roosevelt in 1904. No sane man believes that Mr. Bryan can poll that vote. He might, and he might not, carry Missouri, that Parker lost. He might and he might not, carry Kentucky and Maryland, that Roosevelt lost. He would stand no more chance to carry New York than a gnat would to fly unsinged through the furnace that did not consume the Hebrew children. It is extremely doubtful if Mr. Bryan would get a single electoral vote at what is called the "North," classing Oklahoma, a cotton state, as a part of the "South."

Mr. Bryan's supporters in the Democratic party knew this and his opponents in that party know it. There is a perfect understanding between the two. His friends intend to nominate him to prevent the nomination of any one else, and his enemies in the party cordially approve his nomination, in the conviction that he will be so disastrously defeated that the party will be forever rid of him.

So the "unterrified" have got together after all.

PUSHING FOR THE IRRIGATION CONGRESS.

The work for the successful meeting of the Sixteenth National Irrigation congress is going on apace and that in great shape. Chairman Hopewell and Secretary R. E. Twitchell of the board of control may have their faults and they presumably have, but certainly being lazy or being laggards, can not be charged to their account. Both are very like Lochinvar. They are not laggards in war, nor in politics, nor in business affairs. They "ride rapidly over brake and stone" and overcome serious impediments quickly and promptly. With the strong aid they are being given by Governor Curry, they are pushing to the utmost to attain success. Should the bill now pending in Congress for an appropriation of \$25,000 to defray the expenses of the Congress and being pushed and looked after by Delegate Andrews become law the meeting will be the greatest and most memorable public event in the history of the Southwest.

DEPLORABLE PUBLIC SCHOOL CONDITIONS AT LAS VEGAS.

According to the Las Vegas Optic matters in the public schools of the Meadow City are not what they ought to be. The Optic handles educational affairs there without gloves and insists on a full investigation as well as reform. It is an unfortunate affair but conditions seem to have arrived at a state at which the Optic was compelled to act and to give the episode complained of severe editorial treatment. The paper did this believing it to be its duty and for the best of the city. It should receive the support of the citizens and its demands for a full and thorough investigation and changes if necessary should be heeded.

The following editorial items from the columns of the Optic indicate clearly that matters are in bad shape in the public schools of the Meadow city:

"Throwing puppies down the stairway of the public school building and informing a pupil in a tragic Hamlet-to-be-or-not-to-be manner that if a baseball bat would not subdue him a bullet through his brain would do the work does not seem to us to be the highest recommendation for a teacher of advanced pupils in the high school who should be treated as ladies and gentlemen, and falling short of the standard should be dealt with in an entirely different manner."

"A little level headed investigation might develop the need of wholesome reforms in our school houses. At any rate we might get rid of hot-heads who stir up turmoil and strife rather than guide the young in the paths of peace and education."

"While we do not endorse the resort to arms or muscle to settle matters of public concern, such as school and county affairs, it sometimes requires drastic measures to awaken the proper authorities to a sense of their duty."

HOW TO INJURE YOUR TOWN.

A sojourner in Santa Fe who has watched for the past few months affairs political, municipal and business in the various larger towns of the territory and has traveled very much over New Mexico and besides is a man of keen observation and large experience has handed the New Mexican a clipping from the newspaper published at his home which he thinks ought to be read by the New Mexican's many readers. It is humorous with its negative advice but at the same time very timely. The clipping follows:

"Oppose improvements.
"Fight on the streets.
"Mistrust public men.
"Run down your officers.
"Run down your newspapers.
"Go to some other town to trade.
"Run down the town to strangers.
"Refuse to advertise in your papers.
"Run down everything and everybody but Number One.
"Be particular to discredit the motives of public-spirited men and corporations.
"If a man wants to buy your property ask him two prices for it.
"Lengthen your face when a stranger sneaks of locating in your town.
"Refuse to see the merit in any scheme that does not exactly benefit you.
"Don't invest a cent; lay all your money somewhere else.
"Talk in laudatory places of how bad times are and how everything and everybody is going to the demilitation how-ows."

The Socorro Chieftain rejoices and that very justly at the fact that under the Republican Board of County Commissioners during the year 1907 the County of Socorro has paid dollar for dollar on the bills against the county and has its treasury in good condition. It compares this satisfactory state of affairs with the bad condition which existed under Democratic county boards when accounts against the county no matter how just or legal were often not paid because holders of them were not in the favor of the county commissioners. The change for the better is pleasing for tax payers of the county and beneficial in many other ways. The Chieftain worked very efficiently for the election of the Republican ticket in Socorro county in November, 1906, and very naturally is gratified at the good results then obtained.

THE STATEHOOD OUTLOOK.

Governor Curry's determination to proceed to the national capital and while there to investigate carefully and thoroughly the situation regarding the passage of the bill providing for an enabling act for New Mexico introduced by Delegate Andrews and now in the hands of the committee on territorial affairs of both Houses, is commendable and opportune. With the information that is now in hand and gathered by Delegate Andrews and with what he will find out in the national capital himself, a pretty correct view of the situation ought to be arrived at by the governor and the delegate. If the chances are favorable and the New Mexican hopes and believes they are, then sledge hammer work in earnest must and should be done by the people of the territory and by such delegates as they may send to the national capital in aid of the efforts and work of the governor and Delegate Andrews. If the case does not look as well at close range as it ought to and should it become established that no tangible results can be accomplished then it would be good policy and beneficial all around to boost the coming national irrigation congress and to gird up the loins for an effective and strenuous territorial campaign, the result of which will in all human probability have a far reaching effect on the action of the 60th Congress at its short session concerning New Mexico's just ambition to join the sisterhood of states as a member.

NO SWEEPING INCREASE IN ASSESSMENT RATES.

The Territorial Board of Equalization during its sessions this week made no important increases in assessment values. There will be however, \$2,500,000 added to the assessment of the railroad lines in 1908, this coming principally from the fact that 350 miles of the El Paso and Southwestern Railway became liable to taxation and the assessment value on this mileage was fixed at \$6,500, net per mile, to which will be added about \$500 per mile for depot grounds, railroad shops and real estate. There were no perceptible changes in other classes of taxable property but it may be safely assumed that the general increase for this year over last year will be \$5,000,000, and that the total valuation will figure up a million or two over \$50,000,000.

The board acted very conservatively and very carefully, probably too much so in certain directions. It is hoped that the next assembly if it be a territorial one will increase the powers of the board and provide a system for a better, more thorough and more equitable valuation of taxable property. Candid observers must admit that at present assessment figures are very low and that much property that should be taxed escapes. This condition in addition to the existence of many tax dodgers has kept the taxable valuation of property in this territory below the proper point for many years. It is time that a change for the better takes place.

A SUCCESSFUL NEWSPAPER IN A SUCCESSFUL TOWN.

The Carrizozo Outlook, published by the Carrizozo Publishing Company and edited by N. S. Rose has started upon the second year of its existence. Mr. Rose, although an attorney at law is a veteran newspaper man and for a number of years published a paper at Cerrillos, in Santa Fe county. He knows well what he is about and has the experience, the ability and the knowledge to conduct a very good paper. This he certainly has done during the year the Outlook has been published in the thriving and growing town of Carrizozo. He has helped in every way to aid in the advancement and progress of Carrizozo and has succeeded admirably. During the twelve months past the place has increased in importance, in population and in business activity beyond expectation. The Outlook has kept pace and is one of the best weekly newspapers in eastern New Mexico. In politics it is clean Republican. It keeps a sharp and constant lookout for the interests of its section thereby naturally advancing what is best for New Mexico. The Outlook is all right.

The candidacy of Secretary of War William H. Taft for the Republican nomination for the presidency is evidently assuming greater proportions and gathering more strength than his rival candidates and their campaign managers like. Many of the latter are paying no attention to the eight-hour law in getting up and disseminating all sorts of printed matter showing how wicked Secretary Taft really is and how unfit for the position his record as a statesman, as a judge, as a lawyer and as a citizen proves him to be and yet the secretary has not worried himself sick or become a skeleton. He still tips the beam at 208 pounds.

Outside of Colonel William Jennings Bryan who believes that he will be elected president of the United States on November 3, next, it is rather hard these days to find anyone who has the hardihood to foretell the results with professed certainty but the colonel has been always a great optimist and this very happy side of his character sticks to him very closely. He seems to be happy in his belief even if he is lonely.

PROFESSIONAL CARDS

ATTORNEYS-AT-LAW.
MAX. FROST,
Attorney at Law.
Santa Fe New Mexico.

G. W. PRICHARD,
Attorney and Counselor at Law.
Practices in all the District Courts and gives special attention to cases before the Territorial Supreme Court.
Office: Laughlin Bldg., Santa Fe, N. M.

BENJAMIN M. READ
Attorney at Law.
Santa Fe, New Mexico.
Office: Sena Block, Palao Avenue.

WILLIAM H. H. LLEWELLYN,
Attorney at Law.
Las Cruces, New Mexico.
United States District Attorney.

A. W. POLLARD,
Attorney at Law.
District Attorney, Luna County.
Deming New Mexico.

EDWARD C. WADE,
Attorney at Law.
Practices in the Supreme and District Courts of the Territory. In the Probate Courts and before the U. S. Surveyor General and U. S. Land Offices.
Las Cruces, N. M.

E. C. ABBOTT,
Attorney at Law.
Practices in the District and Supreme Courts. Prompt and careful attention given to all business.
Santa Fe New Mexico.

A. B. RENEHAN,
Practices in the Supreme and District Courts. Mining and Land Law a Specialty. Office in Catron Block.
Santa Fe, N. M.

CHAS. F. EASLEY,
(Late Surveyor General.)
Attorney at Law.
Santa Fe New Mexico.
Land and Mining Business a Specialty.

GEORGE B. BARBER,
Attorney and Counselor at Law.
Lincoln, Lincoln County, New Mexico.
Practices in the District Court and Supreme Courts of the Territory.
Prompt Attention Given to All Business.

FRANK W. CLANCY,
Attorney at Law.
District Attorney for Second Judicial District.

Practices in the District Court and the Supreme Court of the Territory; also before the United States Supreme Court in Washington.
Albuquerque, New Mexico.

H. B. HOLT,
Attorney at Law.
Las Cruces, New Mexico.
Practices in the District Courts as well as before the Supreme Court of the Territory.

MARK B. THOMPSON
Attorney-at-Law
District Attorney, Eighth District, Dona Ana, Lincoln and Otero Counties.
Las Cruces New Mexico

HARVIE DUVAL,
Attorney at Law.
Land, Mining and Corporation Law exclusively. Practice in all the District Courts and Supreme Court. Special attention to perfecting titles and organizing and financing land and mining properties.
Office, Laughlin Bldg., Santa Fe, N. M.

H. M. DOUGHERTY,
Attorney and Counselor at Law.
Practices in the Supreme and District Courts of the Territory.
Office, Socorro. New Mexico.

CATRON & GORTNER,
Attorneys and Counsellors at Law.
Catron Block.
Santa Fe New Mexico.

JOHN K. STAUFFER,
Notary Public.
Office with the New Mexican Printing Co., Santa Fe, New Mexico.

ROMAN L. BACA,
Real Estate and Mines.
Spanish Translator, Notary Public.
Office Griffin Bldg., Washington Ave., Santa Fe, N. M.

OSTEOPATHY.
DR. CHARLES A. WHEELON,
Osteopath.
No. 103 Palace Ave.
Successfully treats acute and chronic diseases without drugs or medicines.
No charge for consultation.
Hours: 9-12 m., 2-5 p. m. Phone 156.

CONY T. BROWN,
Mining Engineer.
Secretary and Treasurer New Mexico School of Mines.
Socorro New Mexico.

CORBET & SMYTHE,
Civil, Mining and Hydraulic Engineers.
Assaying and General Contracting.
U. S. Deputy Mineral Surveyors.
East side Plaza. Santa Fe, N. M.

DAVID M. WHITE, C. E.
(Late Territorial Engineer.)
Irrigation, Water Supply, Railroad and Bridge Building.
Santa Fe, New Mexico.

E. W. HART,
Architects.
Plans Specifications and Supervision.
Address.
Rooms 5 and 6 Pioneer Bldg.
East Las Vegas,
N. M.

THE FIRST NATIONAL BANK

OF SANTA FE.

The oldest banking institution in New Mexico. Established in 1870.
RUFUS J. PALEN, President. JOHN H. VAUGHN, Cashier.
LEVI A. HUGHES, Vice President. ALFRED H. BRODHEAD, Assistant Cashier.

Capital Stock, \$150,000. Surplus and Undivided Profits \$63,500.

Transacts a general banking business in all its branches. Loans money on the most favorable terms on all kinds of personal and collateral security. Buys and sells bonds and stocks in all markets for its customers. Buys and sells domestic and foreign exchange and makes telegraphic transfers of money to all parts of the civilized world on as liberal terms as are given by any money transmitting agency, public or private. Interest allowed on time deposits at the rate of three per cent per annum, on six months' or year's term. Liberal advances made on consignments of live stock and products. The bank executes all orders of its patrons in the banking line, and aims to extend to them as liberal treatment in all respects, as it consistent with safety and the principles of sound banking. Safety Deposit boxes for rent. The patronage of the public is respectfully solicited.

THE PALACE HOTEL

WILLIAM VAUGHN, Props.

One of the Best Hotels in the West

Cuisine and Table Service Unexcelled.

Large Sample Rooms for Commercial Travelers.

Santa Fe, New Mexico. Washington Avenue



LACOME & GABLE, Proprietors.

American and European Plan. Commodious Sample Rooms. Steam Heated. Electric Lighted. Every Room a Good One. Short Order Department Open Day and Night. Press the Button we do the rest.

THE NEW MEXICO COLLEGE OF AGRICULTURE AND MECHANIC ARTS.

OCTOBER 28TH TO MARCH 1ST.

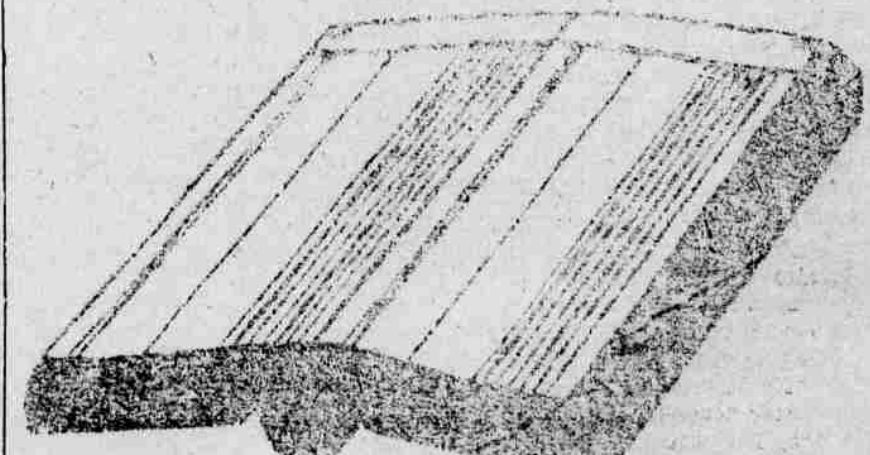
A complete and thoroughly practical course of instruction in Field Crops, Dairying, Farm Machinery, Farm Mechanics, Fruit Growing, Vegetable Growing, Livestock and Elementary Agriculture, Cooking, Home Sanitation, Sewing, Fancy Needlework.

FOUR months beginning October 28th. Prepared for those who cannot attend school the full year but who are free during November, December, January and February. Course open to any one over fifteen years of age.

For further information address,

LUTHER FOSTER, President
P. O.) Agricultural College, N. M.

FLAT : OPENING : BLANK : BOOK



(FRAY PATENT.)
NEW MEXICAN PRINTING CO., SOLE MAKERS FOR NEW MEXICO.
DIAMONDS H. C. YONTZ WATCHES
Manufactured of
RIGHT PRICES MEXICAN FILIGREE Eyes Tested and
RIGHT GOODS JEWELRY Fitted by Up-to
RIGHT SERVICE Date Methods
CUT GLASS, CHINA AND SILVERWARE
246 San Francisco St. Santa Fe, N. M.

TIME TABLE ALL LINES.

Entering and Leaving Santa Fe—
Complied According to Schedule
of Trains Now in Effect.

SANTA FE CENTRAL.
No. 1—Southbound leaves Santa Fe
1:40 p. m.
No. 2—Northbound arrives Santa
Fe 5:25 p. m.

DENVER & RIO GRANDE.
No. 426—Eastbound leaves Santa
Fe 10:20 a. m.
No. 425—Westbound arrives Santa
Fe 4:15 p. m.

ATCHISON, TOPEKA & SANTA FE.
Lamy Branch

Arrive at Santa Fe Station.
No. 721 11:10 a. m.
No. 723 6:50 p. m.
No. 725 10:55 p. m.
Depart From Santa Fe Station.
No. 720 8:25 a. m.
No. 722 4:20 p. m.
No. 724 7:40 p. m.
No. 720 connects with Numbers 10
and 2 east, and No. 1 limited, west at
Lamy.

No. 722 connects with No. 1 west at
Lamy.

No. 1 carries El Paso sleeper.
No. 724 connects with No. 7 and 9,
westbound, and 4 and 8 eastbound.

Main Line Via Lamy.

No. 1 stops at all stations. Lamy
to Albuquerque to discharge passen-
gers from Santa Fe.

No. 721 leaves Lamy at 10:10 a. m.
and will not wait for No. 2 from the
west at Lamy, waiting only for No.
10 from the south and No. 2 from
the east.

Herewith are some bargains offered
by the New Mexican Printing Com-
pany: Code of Civil Procedure of the
Territory of New Mexico, 1897, sheep
bound, \$1; paper bound, 75c; Mis-
souri Pleading forms, \$5; Missouri
Code Pleadings, \$5; the two for \$10;
Adapted to New Mexico Code, Laws
of New Mexico, 1899, 1901, and 1903,
English and Spanish pamphlet, \$2.25;
full leather, \$3; Sheriff's Flexible
Cover Pocket Book, single, \$1.25;
two or more books, \$1 each; New Mex-
ico Supreme Courts Reports, Nos. 3
to 10, inclusive \$3.30 each; Compila-
tion Corporation Laws 75c; Compila-
tion Mining Laws, 50c; Money's Di-
gest of New Mexico Reports, full
sheep, \$6.50; full list school blanks.

DeWitt's Little Early Risers are the
best pills known. Sold by The Ireland
Pharmacy.

FAYWOOD HOT SPRINGS CELEBRATED HEALTH-RE- SORT IN THE SOUTHWEST

The waters of the Springs have proven very beneficial and thor-
oughly efficacious in cases of Kidney troubles, Locomotor Ataxia,
Rheumatism, Gout, Neuritis, General Debility, and a perfect tonic for
the up-building of the human system, body and mind.

First class hotel, with modern improvements, at the Springs.
Rooms with bath if required. The greatest care and attention given
to guests and invalids. Fable first-class and to suit. Miles of first-
class roads in vicinity of Hotel and Springs; carriages, buggies and
saddle horses furnished on application.

Climate of the best, especially from September 1st to June 1st.
Address for particulars and for circulars.

THOS. C. McDERMOTT,
Faywood, Hot Springs, Grant County, New Mexico.

OJO CALIENTE HOT SPRINGS.

These Celebrated Hot Springs are
located in the midst of the Ancient
Cliff Dwellings, twenty-five miles west
of Taos, and fifty miles north of Santa
Fe, and about twelve miles from Bar-
anca Station, on the Denver & Rio
Grande Railroad, from which point a
daily line of stages runs to the springs.
The temperature of these waters is
from 90 to 122 degrees. The gases are
carbonic. Altitude 6,000 feet. Climate
very dry and delightful the year
around. There is now a commodious
hotel for the convenience of invalids,
and tourists. People suffering with
consumption, cancer, and other con-
tagious diseases, are not accepted.
These waters contain 1,688.24 grains
of alkaline salts to the gallon, being
the richest alkaline Hot Springs in

the world. The efficiency of these wa-
ters has been thoroughly tested by
the miraculous cures attested to in the
following diseases: Paralysis, Rheu-
matism, Neuralgia, Malacia, Bright's
Disease of the Kidneys, Syphilis, and
Mercurial Affections, Scrofula, Catarrh,
La Grippe, all Female Complaints, etc.
etc. Board, lodging and bathing \$2.50
per day; \$15 per week; \$50 per
month. Stage meets Denver trains
and waits for Santa Fe train upon re-
quest. This resort is attractive at all
seasons and is open all winter. Pas-
sengers for Ojo Caliente can leave
Santa Fe at 9 a. m., and reach Ojo
Caliente at 4 p. m., the same day.
Fare for round trip from Santa Fe to
Ojo Caliente, \$7.40. For further par-
ticulars, address.

ANTONIO JOSEPH, Proprietor.
Ojo Caliente, Taos County, N. M.

A. F. Spiegelberg.

527 San Francisco Street.

Indian and Mexican Wares and Curios

Blankets, Baskets, Rag, Wax, Feather and Linen Drawn Work,
Opals, Turquoise, Garnets and Other Gems.
OUR MOTTO: To Have the Best of Everything in Our Line.

MAKES WORK EASIER.

Santa Fe People Are Pleased to
Learn How It is Done.
It's pretty hard to attend to duties
With a constantly aching back;
With annoying urinary disorders.
Doan's Kidney Pills make work
easier.

They cure backache.
They cure every kidney ill.
Lino Romero, living at Palace Ave.,
Santa Fe, N. M., says: "I know that
Doan's Kidney Pills are all right and
act just as represented. If I had not
been confident of this fact no induc-
ment could have led me to give my
recommendation to this medicine as
I did some five years ago. I then
stated that this remedy which I pro-
cured at Ireland's drug store, has
cured me of a dull aching in the
small of my back which had bothered
me off and on for a long time, and
had by spells been the cause of my
laying off from work. During the
lapse of years I have now and then
noticed a slight return of the annoy-
ance, but never one that has with-
stood Doan's Kidney Pills. They go
right to the seat of the trouble and
remove it quickly and thoroughly.
The good opinion I first formed of
Doan's Kidney Pills still remains and
always will."

For sale by all dealers. Price 50
cents. Foster-Milburn Co., Buffalo
New York, sole agents for the United
States.

Remember the name—Doan's—and
take no other.

The New Mexican Printing Com-
pany is headquarters for engraved
cards de visite in New Mexico. Get
your work done here and you will be
pleased in every particular.

KODOL is the best remedy known
today for dyspepsia, indigestion and
all troubles arising from disordered
stomach. It is pleasant, prompt and
thorough. Sold by The Ireland Pharm-
acy.

The New Mexican can do printing
equal to that done in any of the large
cities. Our solicitor: Every piece of
work we turn out. Try our work once
and you will certainly come again. We
have all the facilities for turning out
every class of work, including one of
the best binderies in the west.

Kennedy's Laxative Cough Syrup
acts upon the bowels and thereby
drives the cold out of the system. It
contains no opiates—it is pleasant to
take and is highly recommended for
children. Sold by The Ireland Pharm-
acy.

TO ESTABLISH NEW BOUNDARY

Congressman Stephens Wants Survey
Made to Determine Exact Lines of
States and Territory.

Washington, Jan. 16.—Congressman
Stephens has introduced a bill ap-
propriating \$20,000 or as much there-
of as is necessary to survey and mark
the boundary between Texas and Ok-
lahoma and Texas and New Mexico.

The bill provides that the surveys
shall begin at the point where the
boundary line between the state of Ar-
kansas and the state of Oklahoma
crosses Red river, and running thence
westwardly along the Red river to the
point where the one hundredth de-
gree of longitude west from Green-
wich crosses Red river; then in mark-
ing the boundary between the state of
Oklahoma and the territory of New
Mexico and the state of Texas, begin-
ning at the point where the one hun-
dredth degree of longitude intersects
the parallel of thirty-six degrees and
thirty minutes north latitude, as de-
termined by John H. Clark, the com-
missioner on the part of the United
States, in 1859; thence west along said
parallel, as marked by said Clark, to
the point where it intersects the one
hundred and thirty degree of longitude
west from Greenwich as determined
by said Clark, and thence south with
the one hundred and thirty degree of
longitude to the thirty-second parallel
of north latitude; and thence west
with the thirty-second degree of north
latitude, as determined by said Clark,
to the Rio Grande.

The bill provides: "That the part of
the line run and marked by monu-
ments along the thirty-second parallel
of north latitude and that part of the
line marked by monuments along the
one hundred and thirty degree of lon-
gitude west of Greenwich, the same be-
ing the east and west and north and
south lines between Texas and New
Mexico, and run by authority of act
of congress approved June 5th, 1858,
and known as the Clark lines, and that
part of the line along the parallel of
thirty-six degrees and thirty minutes
of north latitude, forming the north
boundary line of the Panhandle of
Texas, and which said parts of said
lines have been confirmed by acts of
congress of March 3rd, 1891, shall re-
main the true boundary lines of Texas,
Oklahoma and New Mexico, but the
commissioners appointed under this
act shall remark the old Clark monu-
ments and lines where they can be
found and identified by the original
monuments now found on the ground,
or where monuments are now missing
but their original position can be
shown by competent parcel evidence, or
by the topographical maps, or field
notes left by Clark; the monuments so
found, or their position so identified,
shall determine the true position and
course of the boundary lines as marked
by said Clark to the full extent of
the survey was actually originally
made by him; and where no survey
was actually originally made on said
lines it shall be the duty of the said
commissioners to run a straight line
between the nearest points deter-
mined by the Clark survey, and when said
straight lines have been so run, marked
and agreed upon by the commis-
sioners they shall thereafter form the
true boundary lines."

The Pure Food Law.

Secretary Wilson says, "One of the
objects of the law is to inform the con-
sumer of the presence of certain
harmful drugs in medicines." The law
requires that the amount of chloro-
form, opium, morphine, and other hab-
it forming drugs be stated on the label
of each bottle. The manufacturers of
Chamberlain's Cough Remedy have al-
ways claimed that their remedy did
not contain any of these drugs, and
the truth of this claim is now fully
proven, as no mention of them is made
on the label. This remedy is not only
one of the safest, but one of the best
in use for coughs and colds. Its value
has been proven beyond question dur-
ing the many years it has been in gen-
eral use. For sale by all druggists.

MIMBRES RIVER IS MYSTERIOUS STREAM

Has Its Source in New Mexico, But Its
Outlet is Unknown—Waters
Rich Valley.

Deming, N. M., Jan. 16.—The Mim-
bres river which rises in the Black
mountains to the north and which is to
furnish the water for the big irriga-
tion schemes which are being planned
and built in the Mimbres valley is the
only stream which rises in New
Mexico and flows downward through
Old Mexico, which refuses to come un-
der the jurisdiction of the Internation-
al Boundary commission and has made
secret disposition of its own flow be-
fore it reaches Mexican soil where it
could be appropriated for foreign use.
Eighteen miles to the north of Dem-
ing the flow of water suddenly dis-
appears to be seen no more and never
to be definitely ascertained as to its
outlet.

When freshets come a portion of the
water is carried over the first sink
to lose itself about fourteen miles be-
low in another sand spot. While it is
not known as to the absolute outlet
for this stream of water, it is suppos-
ed by old timers here to feed the body
of water called Lake Polomas, in
Mexico, forty or fifty miles south. But
as it is not proven as to its outlet and
its waters having disappeared and so

never appropriated by residents of Old
Mexico the water all belongs to resi-
dents of the Mimbres valley.

This valley is one of the very richest
in the territory and while more or less
farming and ranching has been done
for a great many years in the valleys
the present plans of the government
through the reclamation act and the
assistance of property owners will re-
claim a vast tract of the best agricul-
tural and fruit lands in the entire
southwest.

A tickling cough from any cause,
is quickly stopped by Dr. Shoop's
Cough Cure. And it is so thoroughly
harmless and safe, that Dr. Shoop tells
mothers everywhere to give it with-
out hesitation even to very young
babes. The wholesome green leaves
and tender stone of a lung-healing
mountainous shrub, furnish the cura-
tive properties to Dr. Shoop's Cough
Cure. It calms the cough and heals
the sore and sensitive bronchial mem-
branes. No opium, no chloroform,
nothing harsh to injure or suppress.
Simply a resinous plant extract, that
helps to heal aching lungs. The Span-
iards call this shrub which the Doc-
tor uses, "The Sacred Herb." Always
demand Dr. Shoop's Cough Cure. For
sale by all dealers.

TO AND FROM ROSWELL.

Connection made with Automobile
Line at Torrance for Roswell daily.
Automobile leaves Torrance for Ros-
well at 4 a. m., and arrives at Roswell
at 12 noon. Automobile leaves Ros-
well for Torrance at 1 p. m., and ar-
rives at Torrance at 10 p. m. The fare
between Santa Fe and Torrance is
\$5.50 and between Torrance and Ros-
well \$10. Reserve seats on automob-
ile by wire.

J. W. STOCKARD,
Manager Automobile Line.

Passed Examination Successfully.

James Donahue, New British, Conn.,
writes: "I tried several kidney reme-
dies, and was treated by our best
physician for diabetes, but did not im-
prove until I took Foley's Kidney Cure.
After the second bottle I showed im-
provement and five bottles cured me
completely. I have since passed a
rigid examination for life insurance."
Foley's Kidney Cure cures back-ache
and all forms of kidney and bladder
trouble. For sale by The Ireland
Pharmacy.

"OY! OYSTERS! HO!"

The first of the season just received
at the only up-to-date short order
house, The Bon Ton, where they are
being served to your taste. Call and
be convinced. They handle A. Booth's
New York oysters, which come in
sealed cans.

Lame Shoulder Cured.

Lame shoulder is usually caused by
rheumatism of the muscles and quick-
ly yields to a few applications of
Chamberlain's Pain Balm. Mrs. F. H.
McElwee, of Bolstown, New Brun-
swick, writes: "Having been troubled
for some time with a pain in my left
shoulder, I decided to give Chamber-
lain's Pain Balm a trial, with the re-
sult that I got prompt relief." For sale
by all druggists.

NOTICE TO SANTA FE COUNTY TEACHERS.

A regular teachers' examination for
applicants for first, second and third
grade certificates will be held Janu-
ary 24th at 10 a. m., at the Santa Fe
High School, and all those wishing to
teach in Santa Fe county, who are not
already holders of certificates must be
passed by the board. All holders of
special permits must also attend this
examination as their permits expire on
the 24th of January, 1908, and failure
to attend and secure proper certificates
will disqualify them as teachers.

I would be pleased to have a large
attendance at this examination, as
there are several school districts at
present not supplied with teachers, and
those securing certificates will be as-
signed positions.

J. V. CONWAY,
County School Superintendent.

It is very important and in fact it
is absolutely necessary to health that
we give relief to the stomach promptly
at the first signs of trouble. Take some-
thing once in a while; especially after
meals; something like KODOL for dys-
pepsia and indigestion. It will enable
your stomach to do its work prop-
erly. Sold by The Ireland Pharmacy.

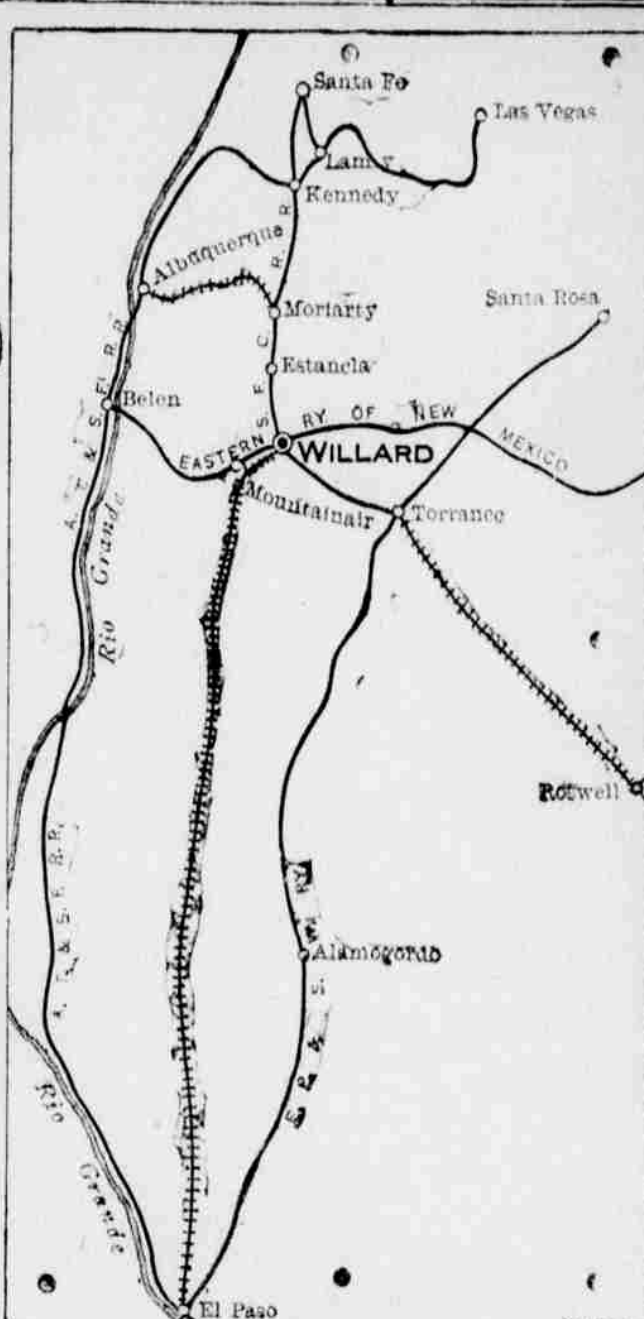
HOT TAMALES.

Hot Tamales, Chile Verde, Chile
Colorado, Pozole with Cuelitos, Me-
nudo and Chicken Temoles are among
the Mexican and Spanish dishes which
are being served nightly at the up-to-
date short order house, The Bon Ton
Restaurant.

When the Stomach, Heart, or Kid-
ney nerves get weak, then these or-
gans always fail. Don't drug the
stomach, nor stimulate the heart or
kidneys. That is simply a makeshift.
Get a prescription known to Drugg-
ists everywhere as Dr. Shoop's Resto-
rative. The Restorative is prepared
expressly for these weak inside
nerves. Strengthen these nerves
build them up with Dr. Shoop's Resto-
rative—tablets or liquid—and see how
quickly help will come. Free sample
test sent on request by Dr. Shoop, Ra-
cine, Wis. Your health is surely worth
this simple test. Sold by all dealers.

The New Mexican Printing Com-
pany is prepared to furnish cards de
visite for ladies and for gentlemen on
short notice in first class style at rea-
sonable prices, either engraved or
printed. Call on The New Mexican
Printing Company.

Willard is Growing Fast



A Natural Commercial Center

STUDY THE MAP.

The natural point on the New A., T. & S. F. Cut-off for the distribu-
tion of freight, having the advantage of the easy grades and short route
to the East and West, and direct communication with all points in the Ter-
ritory.

Wholesale houses are coming to Willard as soon as the Cut-off is open.
Surrounded by a fine farming country. The purest water in New Mexico.
The geographical center of Torrance County and of New Mexico. The
water point on the great A., T. & S. F. short line through New Mexico.
Willard is a growing town. Willard will make a City. Study the Map.
For information, call on or address

FRANK L. WALRATH, REAL ESTATE.
WILLARD, N. M.

Santa Fe Livery Stable

THEODORE CORRIK Proprietor.

LIVERY, BOARDING AND FEED STABLE

FIRST-CLASS CARRIAGESERVICE
GOOD SADDLE HORSES
FINE RIGS

'PHONE 132. 120 SAN FRANCISCO ST.

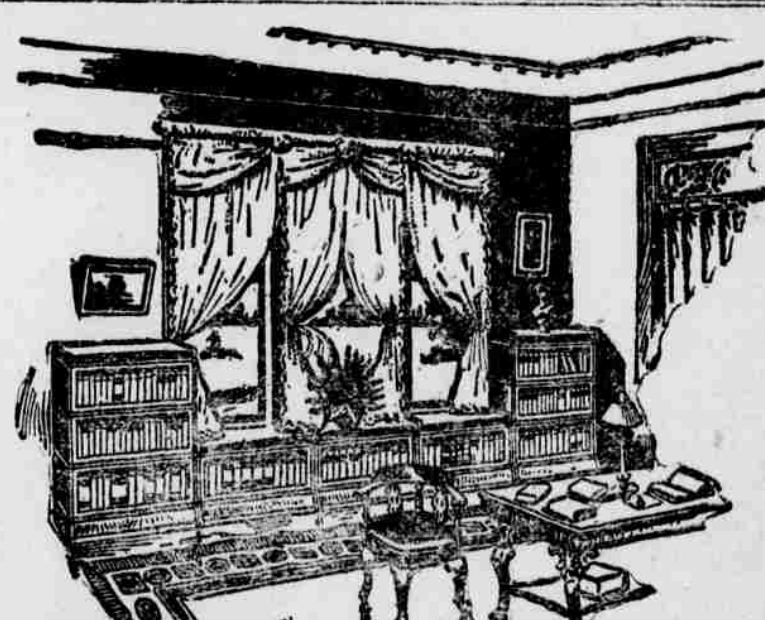
I am Sole Agent in this city for

"SCHWABS"

Celebrated Set Price Suits of
\$10.00 \$15.00 \$20.00 25.00

Fit and wear guaranteed. Sole agent for "Crossetts" Men's
Shoes, "Best on Earth." Please call and convince yourself. No
trouble to show goods.

ADOLPH SELIGMAN



Globe-Wernicke "ELASTIC" BOOKCASE

The kind that grows with your library—
that will fit practically any space—that
can be moved one unit at a time by one
person without disturbing the books—that is
practical, artistic, and the only perfect sectional
bookcase made. Fitted with non-binding, roller-
bearing doors; base units furnished with or without
drawers; and all made in a variety of woods and
finishes adapted to any surroundings. Call and
see them or send for catalog 103 with interior
views showing arrangement in library, parlor, etc.

New Mexican Printing Company.
Local agents, Santa Fe, N. M.

SPECIAL SALE.**ON ULSTERS & OVERCOATS**

For Two Weeks Commencing in January 7, 1908.

Blizzard Repellers

Will be a splendid name for our big warm Ulsters. What satisfaction is in a comfortable Ulster? This kind of weather we have one ready for you to slide right into this morning, and at a price that is easy.

Black and Gray Melton from \$18.00 to \$20.00

Irish Frieze from \$6.50 to \$15.00;

Novelties of the best fabrics in the market from \$20.00 to \$25.00

Every garment is guaranteed to be first class Tailor made. The weather man has plenty more Blizzards to deal out this winter. Better fortify yourself right now. Takes more money to pay an average Dr. bill than it does to buy an ULSTER or OVERCOAT.

This is your chance to get a SWELL OVERCOAT for little money.

Come at once and see our line.

NATHAN SALMON.

The largest and the only up-to-date store in Santa Fe.

PERSONAL MENTION

Deputy U. S. Marshal W. R. Forbes was a visitor in the city today from Albuquerque.

J. W. Akers has left on a business trip to Cuba, Sandoval county. He has a large sheep ranch there.

Mr. and Mrs. Felix Sanchez, of Torrance, are guests at the Normandie. They are here to visit friends.

Mrs. R. L. Baca is in Albuquerque on a visit to her mother-in-law, Mrs. R. A. Baca, who is seriously indisposed.

Jose S. Belva, who is engaged in sheep raising near Palma, Torrance county, reached the city last evening and today attended to business in the capital.

Michael Downs last night registered at the Normandie. He came from the growing town of Stanley in Santa Fe county. He was here on personal business.

W. C. Asher interested in the real estate business in the new town of Stanley in Santa Fe county, visited the capital today. He was a guest at the Normandie.

Insurance Commissioner Jacobo Chaves returned yesterday from a trip to Los Lunas, where he formerly lived and at which place he still has property interests.

Francisco Trujillo, a farmer in the vicinity of Santa Rosa, Guadalupe county, was among last night's arrivals in the capital and today had a room at the Normandie.

Mr. and Mrs. George H. Van Stone of Estancia, accompanied by their two children, arrived in the city last evening and were guests today at the McGillivray-Easley wedding.

Mrs. Lee F. Easley of Trinidad, Colorado, a cousin of Charles F. Easley, is in the city and was a guest this afternoon at the wedding of Miss Ethel Easley, and Angus McGillivray.

J. W. Grover engineer of the Geological Survey, has been ordered to the Dawson mining camp for the purpose of surveying coal lands in that section for the survey.

A. G. Delgado and Romulo Lopez left overland this morning for the lumber camp of the Domingo Lumber company which is located near Bland. They will be gone about a week.

W. G. Harris, a resident of Stanley, south Santa Fe county, paid a business visit to this city today. He stopped at the Normandie. L. D. Rushing of the same town was also here and at the Normandie.

Bonifacio Trujillo and Gabriel Trujillo, farmers at Rio Chiquito, visited the city today on business and to talk with friends. They also purchased ranch supplies. They stopped at the Normandie.

Stanley Hendrich, naturalization examiner for the department of justice with headquarters in Washington, is in the city on official business examining records at the office of the district clerk.

H. M. Lettis, live stock raiser in North Colfax county, with residence at Koehler, member of the Board of Equalization, after attending the sessions was a passenger for his northern home this forenoon.

F. P. Jones, Silver City merchant, who has been in this city during the week performing his duties as a member of the Territorial Board of Equalization, was a passenger for the south last night on route home.

William McIntosh, successful sheep raiser and capitalist with headquarters at McIntosh, Torrance county, registered at the Claire hotel last evening. He came to attend the Easley-McGillivray wedding today.

James F. Hinkle of Roswell, chairman of the Territorial Board of Equalization and who presided over the sessions of the board during the week, was a passenger for his southern home last night. He went via the Bolen "cut-off."

Chairman W. S. Hopewell of the Territorial Statehood League, and also chairman of the board of control of the national irrigation congress, arrived in the city on the noon train today from Albuquerque. He is a guest at the Claire.

Judge Henry L. Waldo, solicitor of the Santa Fe railway system for New Mexico, who has been in the city ever since Monday on business before the Territorial Board of Equalization, went to his headquarters at Las Vegas this forenoon.

Miss Bernice Spohn of Aztec has arrived in the city and yesterday took a position as stenographer in the office of Attorney General James M. Hervey, where she is being employed in transcribing statutes revised by Mr. Hervey as a member of the law revision commission.

C. L. Castle, an inspector of agricultural lands in the Forest Service, who has been stationed at Mountainair, Torrance county, for several months past, has been transferred to Albuquerque for office duty at the headquarters of Supervisor Hugh H. Harris, of the Manzano and San Mateo national forests.

Jose N. Cisneros, well-to-do sheep grower and farmer near Chamita, Rio Arriba county, spent the day in the city partly on business and partly on a visit to his two sons, Augustine and Benjamin, pupils at St. Michael's college. Mr. Cisneros states that sheep in southern Rio Arriba county are in good condition and that the range and water are very fair, but that there is no snow as yet in the mountains. He is well satisfied with the progress his two sons are making at St. Michael's.



The secret of old age is health. Use **BALLARD'S HOREHOUND SYRUP**

And you will have health. Great cure should be taken of ones health and Ballard's Horehound Syrup will cure COUGHS, COLDS, CROUP, BRONCHITIS AND ALL PULMONARY DISEASES.

Mrs. J. H. McNeill, Salt Lake City, Utah, writes: "I am eighty years old and I thank Horehound Syrup for having cured me of coughs, colds and other like diseases."

Three Sizes 25c, 50c and 1.00.

Ballard Snow Liniment Co.
ST. LOUIS, MO.

Sold and Recommended by **FISCHER DRUG STORE.**

Allan McGillivray and John McGillivray, who are associated with their brother, Angus McGillivray, in sheep raising and ranching in the Estancia valley, were arrivals last evening and guests at the Claire hotel. They are brothers of Angus McGillivray, the groom in the Easley-McGillivray nuptials today. They attended the wedding ceremonies this afternoon at the residence of Hon. and Mrs. Charles F. Easley, the parents of the bride on Galisteo street. They are among the leading citizens of the county of Torrance.

(Continued On Page Eight.)

LEGAL BLANKS.

Justice of the Peace Blanks
Justice Quarterly Report, 1-2 sheet.
Homestead Application, 4-007, 1-3 sheet.
Township Plats, full sheet.
Release of Deed of Trust, 1-2 sheet.
Final proof, 4-372a, 1-2 sheet.
Affidavit to be Filed Before Contest, 4-072, 1-2 sheet.
Affidavit of Witness, 4-074, 1-2 sheet.
Hipoteca de Bienes Muebles, 1-2 sheet.
Fianza Oficial y Juramento, 1-2 sheet.
Assignment of Mortgage, 1-2 sheet, or, \$3.50. Postage, Leather, 16c, paper, 14c.
Application for License, Retail Liquor License, 1-2 sheet.
English and Spanish, 100 in Book, 75c.
Power of Attorney, 1-2 sheet.
Bill of Sale—Animals Not Bearing Deed of Trust, full sheet.
Affidavit and Order for Publication of Notice of Contest against a Non-resident Entryman, 4-628, 1-2 sheet.
Application for License, 1-2 sheet.
Bill of Sale in Books of 25 Blanks.
Formula de Enumeracion, 1-2 pliego.
Report of the Assessor, full sheet.
English, 1-2 sheet.
Application for Marriage License.
Spanish, 1-2 sheet.
Agreement of Publisher, 1-4 sheet.
Authority to Gather, Drive and Handle animals Not Bearing Owner's Recorded Brand, 1-2 sheet.
Plaint, 1-2 sheet.
Bill of Sale, 1-2 sheet.
Forcible Entry and Detainer, Summons, 1-4 sheet.
Claimants Testimony, 4-074b, 1-2 sheet.
Declaration of Application, 2-274, 1-2 sheet.
Non-resident Entryman, 4-628, 1-2 sheet.
Final Homestead Proof, 4-369, full sheet.
Sheep Contracts, 1-2 sheet.
Amended Location Notice, 1-2 sheet.
Agreement of Publisher, 1-4 sheet.
Proof of Labor, 1-4 sheet.
Notice Mining Location, 1-2 sheet.
Placer Mining Location, 1-4 sheet.
Title Bond of Mining Property, 1-2 sheet.
Mining Deed, 1-2 sheet.
Mining Lease, 1-2 sheet.

OPERA HOUSE

A. M. Dettolbach Mgr.

MOVING PICTURES.

"The Scheme That Failed."
"Bird Nesting."
And Others.

SONG—"The Belle."**MOVING PICTURES.**

"Life For Life."
Next Change will be Friday.
Every Evening and Wednesday and Saturday Matinees.
Change of Program Tuesday and Friday.
Admission 10c
Reserved Seats 20c
Doors open at 7 o'clock; Performance at 7:30 and 8:30 o'clock.

ESTABLISHED 1856

INCORPORATED 1908

Seligman Bros Co**January Muslin Underwear Sale**

This is a special lot bought for this sale only, made of fine materials trimmed with tastefully chosen laces and embroideries—not old patterns or flimsy kinds that will go to pieces in the wash; you can get a clearer idea what this means by seeing the line, and then comparing price and qualities with those bought elsewhere.

There is Greater Scope

to the the sale than ever before. It is especially rich in moderately and low priced garments; particular features are the combination garments and dainty Paris Lingerie.

Come as Early as You Can

to get the best things in the sale. Some styles will be exhausted early although provision is made for the balance of the month.

Prices Guaranteed lower than ever before

Particular and prompt attention paid to mail orders. All our Winter Stock of Ladies Cloaks and Hats and Men & Boys Overcoats at Less Than Cost

P. O. Box 219. —O— Phone No. 36.

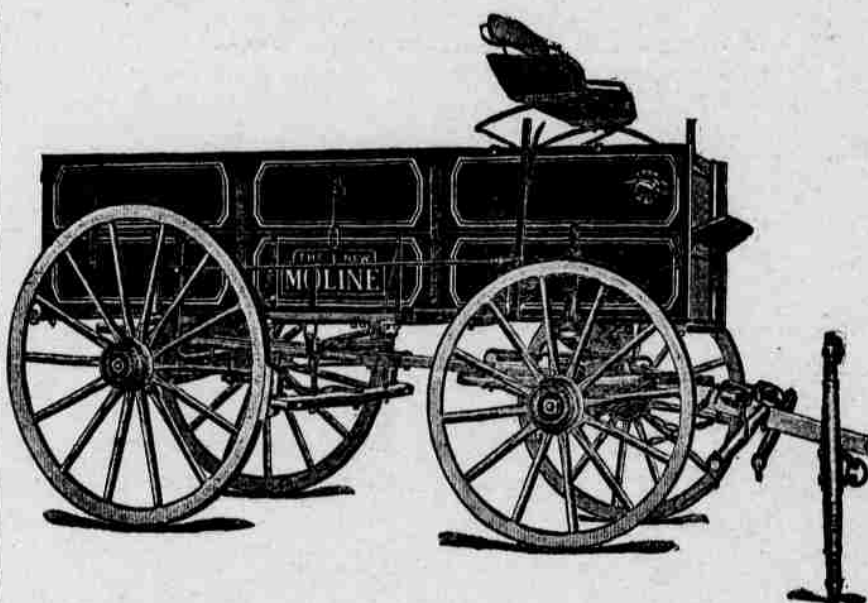
For Half a Century the Leading Dry Goods House in the City.

CHARLES WAGNER Furniture Company.

Iron and Brass Beds, Rattan Goods, Kitchen Cabinets, Book and Corner Stands, wardrobes, desks and imported goods.

**EMBALMING AND UNDERTAKING A SPECIALTY.**

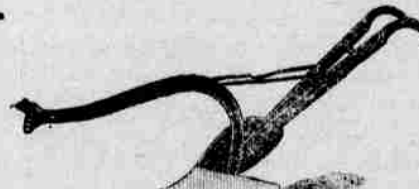
306-S San Francisco St. Phone 10
Night Call Phone No 1

The Best Wagon on Earth.

The Best Place in Town to buy your

HARDWARE

**HARNESS
SADDLES**



**PLOWS
HARROWS**

Wood-Davis Hardware Co.

The New Mexican Printing Company has prepared civil and criminal dockets especially for the use of justices of the peace. They are especially ruled, with printed headings, in either Spanish or English, made of good record paper, strongly and durably bound with leather back and covers and canvas sides, have full index in front and the fees of justices of the peace and constables printed in full on the first page. The pages are 10 1/2x6 inches. These books are made up in civil and criminal dockets, separate of 32 pages each, or with both civil and criminal bound in one book, 80 pages civil and 320 pages criminal. To introduce them they are offered at the following prices: Civil or criminal \$2.75 Combined civil and criminal \$4.00 For 45 cents additional for a single docket, or 55 cents additional for a combination docket, they will be sent by mail or prepaid express. Cash in full must accompany order. State plainly whether English or Spanish printed heading is wanted.

The New Mexican Printing Company will do your job work with neatness and dispatch



SUBSCRIBE FOR THE DAILY NEW MEXICAN.

M V. Butter
a Specialty.

Winter Grocery Co.

Southeast Corner Plaza, Santa Fe.

Telephone No. 40.

INCORPORATED

H. B. Cartwright & Bro., WHOLESALE GROCERS

Grain, Flour and Potatoes, Stationery, Patent Medicine and Grocers' Sundries.

PROMPT ATTENTION GIVEN MAIL ORDERS

SANTA FE, N. M.

Break up your Cold

With the Famous Cold Tablet

Sold and Guaranteed by

The Ireland Pharmacy

25 CENTS.

Phone 41.

Phone 41

Our Bank



IS NOT
as large as the largest, but it IS AS
STRONG AS THE STRONGEST. Its
policy is to be LIBERAL, and to be
STRONG, to do business with you on a
basis that you will always remain its
customer.

WE PAY

4 per cent on Time Certificates
4 per cent on Savings Deposits.
(Interest compounded Semi-Annually)

Your Check Account would be welcomed also.

LIVERY STABLE

FINE RIGS, RELIABLE HORSES, SINGLE
BUGGIES, SURRIES, HACKS.

CALL UP 'PHONE NO. 9

When in Need of Anything in the Livery
Line. Drivers Furnished. Rates Right.

CHAS. CLOSSON.



YOU HIT THE RIGHT FEED
when you strike this establishment
we handle nothing but

FRIST-CLASS FLOUR AND FEED.

Those who have dealt with us don't
have to be told how excellent our spe-
cialties are: And those who don't
know our flour and feed are losing
something every day they remain un-
acquainted. If you are one of these
you should give us a trial order at
once.

Sole Agency For
INTERNATIONAL STOCK FOOD.

LEO HERSCH

Wholesale and Retail Dealers in
FLOUR, HAY, GRAIN, POTATOES, SALT AND SEEDS.
THE ONLY EXCLUSIVE GRAIN HOUSE IN SANTA FE, NEW MEX.

WHY DID YOU COME WEST?

To rest, recuperate, hunt, fish, breathe fresh, pure air, see mountain
scenery, get a change, live a new and an fascinating life under new condi-
tions, and get food that needs no pure food law.

That's why you came west!

There is a beautiful little valley that nestles between the highest
mountains of the Rockies on the upper Pecos river; ideal altitude, 7,000
feet, and temperature identical with Santa Fe. Its streams swarm with
trout and the woods and ranges are filled with game large and small. The
ranchers live the life of the west. There are mountain lion, bears, deer,
and wolves for the hunter. There are saddle ponies to be had for the ask-
ing, rooms in a big rambling ranch house with wide verandas, tent rooms
or a cabin if you want it. The days are never dull. You see a great ranch
and the genuine western life. Fresh milk, butter and eggs—all you can
drink and eat. Sleep in blankets at night—fish in your shirt sleeves during
the day. You couldn't spend more than \$9 a week if you tried. Its the
place you are looking for. Accommodations for both men and women.
Inquire this office or address THE VALLEY RANCH, Pecos, N. M.

Globe-Wernicke



"Elastic" Bookcase
the original and only per-
fect sectional bookcase
made. The doors are non-
binding, dust-proof, oper-
ate on roller bearings, and
positively cannot get out
of order. Bases furnished
with or without drawers.
Call and see them, or
send for catalog No. 105
By the New Mexican
Printing Company, Local
agents. Santa Fe, N. M.

CALL AND SEE FOR YOURSELF THE FINEST AND FULL LINE OF CHRISTMAS GOODS

Diamonds, Watches, Clocks
Jewelry, Silverware, Deco-
rated China, Novelties,
Leather and Leather Ebony
Goods.

S. Spitz MANUFACTURER
JEWELER

MINOR CITY TOPICS

Weather forecast for New
Mexico: Fair tonight and Fri-
day with warmer weather.

Show tonight.

The Woman's Auxiliary will meet
tomorrow afternoon at 2:30 o'clock
with Mrs. Frost.

"The Scheme That Failed" and "A
Life for a Life" are features of the
moving picture show at the opera
house.

Santa Fe Lodge No. 2, I. O. O. F.,
will hold its regular weekly meeting
this evening at 7:30 o'clock at Odd
Fellows' hall.

The Friday evening dancing class
will give its dances every alternate
Friday hereafter. The next dance will
be Friday, January 24th instead of the
17th as stated.

Spanish suppers will be served at
St. Vincent's Sanitarium on January
22 and 23 from 6 to 10 p. m. Ice
cream will be served as a part of the
meal. Tickets will be \$1.

On page 7 of today's issue appears
the snowfall bulletin for the months
of November and December issued by
the local U. S. Weather Bureau. It
contains very interesting data.

It's to help the hospital building
fund—the Spanish supper at St. Vin-
cent's Sanitarium, Wednesday and
Thursday, January 22 and 23. Tickets
will be one dollar, including ice
cream.

A "weight social" will be held this
evening at St. John's Methodist Epis-
copal church under the auspices of
the Epworth League. The entertain-
ment is open to the general public.

The remains of the infant daughter
of Mr. and Mrs. Juan Sedillos whose
death occurred yesterday morning,
were buried this afternoon in Rosa-
rio cemetery. The child was aged
eight months.

Mrs. S. G. Cartwright is indisposed
at her home on the south side. As
a result the Bridge Whist Club will
meet on Saturday afternoon at the
residence of Mrs. E. A. Fiske, instead
of at the Cartwright home.

Secretary Benjamin M. Read of the
law revision commission is still con-
fined to his home by his recent illness,
but expects to leave the house within
a few days as he is much improved.
He has had an attack of la grippe.

Montezuma Lodge, No. 1, A. F. and
A. Masons, will keep "open house" to-
night from 8 to 11 o'clock at the Ma-
sonic temple. A pleasing program has
been arranged and the event promises
to be well attended, as a large num-
ber of invitations have been sent out
to friends of the members.

At a well attended meeting of the
Woodmen of the World held last
evening the following officers were in-
stalled for the ensuing year: Fred
Muller, consul commander; Miguel
Gorman, advisor; Lieutenant; C. H.
Lauchner, clerk; H. S. Kaune, bank-
er; James Baca, Jr., escort; L. J.
Gonzales, watchman; J. A. Catanaach,
sentry; J. H. Sloan, physician, and
L. J. Lopez, manager. One newly
elected member was introduced and
instructed in the secret work of the

H. S. KAUNE & CO.

GROCERIES.

JUST RECEIVED A

Fresh lot of New York
Buckwheat Flour

In 10 pound Sacks or
in Bulk

Also have a fine line of
Maple Sorghum
and other fancy
TABLE SYRUPS

Primrose Butter
NONE BETTER.

H. S. KAUNE & CO.
'PHONE 26.

CHAS. ILFELD CO.

LARGEST WHOLESALE HOUSE IN NEW MEXICO

Prepared to Fill Small or Large Orders for Anything in

GROCERIES, HARDWARE, IMPLEMENTS, SADDLERY
CROCKERY, DRY GOODS, NOTIONS, BOOTS,
SHOES, HATS, MILLINERY, CLOTHING

Compare Our Goods and Prices. We Can Supply you
Quicker and Better Than Far-off Houses. Try Us.

CHAS. ILFELD CO.

ALBUQUERQUE, N. M.

Main Office, LAS VEGAS, N. M.

SANTA ROSA, N. M.

FROM NOW ON

balance of my Winter
Millinery will be
greatly reduced in
price.

Money Saved to Buy Now.
MISS A. MUGLER

order. After adjournment refresh-
ments were served in the ante-room.

Fair and warmer weather is pre-
dicted tonight and tomorrow in New
Mexico by the official weather fore-
cast. Over an inch of snow fell here
yesterday and the precipitation for
the twenty-four hours ending at 6 a.
m. today was 0.10 inch. In Santa Fe
the temperature at 6:08 o'clock this
morning was 19 degrees and the low-
est during last night 18 degrees. The
maximum temperature yesterday was
36 degrees at 1:20 p. m. and the mini-
mum temperature 25 degrees at 6 a.
m. the mean temperature for the day
being 30 degrees and the average re-
lative humidity 85 per cent.

The January meeting of the Santa
Fe Board of Trade will be held to-
morrow evening at the office of the
water company, at 8 o'clock. This is
the first meeting of the year, when the
work for 1908 should be mapped out,
and will therefore be of unusual in-
terest. All committees are asked to
present programs. Arrangements for
more street tree planting should be
started. Plans to encourage new in-
dustries will be considered. The
improvement of railroad connections
and accommodations at Lamy will re-
ceive attention. 1908 ought to be made
a banner year for improvements.

(Continued on Page Eight.)

LEGAL BLANKS.

Property, 12 sheet.
County Superintendent's Warrant,
50 in Book, 35c.
Poll Tax Receipt Book, English and
Spanish, 50 in Book, 25c.
Poll Books for City Election, 8
Pages, 40c.
Poll Books for Town Election, 8
pages, 40c.
Road Supervisor's Receipt Book, 50
Notary Seals:
Aluminum—Pocket, \$2.75, deliv-
ered. Desks, \$3.25, delivered
nearest express office.
New Mexico Supreme Court Reports
Nos. 1 and 2 full leather \$6.50 a
volume; 3 to 11, inclusive, price
\$3.30 each. Postage 25c each.
Auto de Arresto, 14 pl. 1c.
Final Proof of Desert Land Entry,
Spanish, 12 sheet.
Missouri Pleading Forms, \$5, post-
age 17c.
Missouri Code Pleadings, \$6.00. The
two for \$10. Adapted to New
Mexico Code. Postage 17c.
Laws of New Mexico, 1899, 1901
and 1903; English or Spanish,
pamphlet \$2.25; full leather \$3;
1905, English or Spanish, pamphlet,
\$2.75; full leather, \$3.50; postage
240 Page J. P. Civil Docket, \$2.75.
Postage 45c.
240 J. P. Criminal Docket, \$2.75.
Postage 45c.
320 Page J. P. Docket, 1-4 Civil, 3-4
Criminal, \$4.00. Postage 55c.
480 Page hand made Journal, \$5.75.
480 Page hand made Ledger, \$6.50.
Money's Digest of New Mexico Re-
ports. Full Sheep \$6.50; Postage
25c.
Auto de Prison, 1-4 pl.
Warranty Deed, 1-2 sheet.
Bond for Lead, 1-2 sheet.
Official Bond, 1-2 sheet.
Bond of Indemnity, 1-2 sheet.
Leather 16c; paper 14c.
Notary Records, \$1.25 each.

THE FAMOUS FALSTAFF BEER
HENRY KRICK
Sole Agent for
LEMP'S ST. LOUIS BEER

And All Kinds of Mineral Waters.

SODA WATER,
Any Flavor you Desire.

Orders Filled for Any Amount. Mail Orders
will Receive Prompt Attention.

Phone 38.

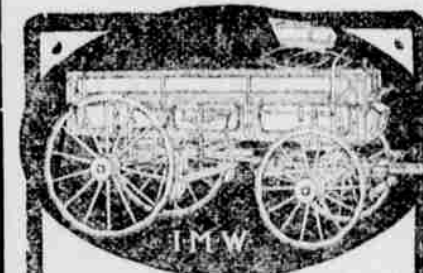
Montezuma Avenue.

Santa Fe, N. M.

The Studebaker.

For the Man Who Wants the Best

To him and to all who believe that quality
is better investment than its counterfeit
in buying a wagon, we will show beyond
a doubt that the STUDEBAKER is as
good as right materials, modern appliances
in construction, and skilled workmen, who
"Know How", can make it.



The Great West

has been made since the first
Studebaker wagon was made.
Indeed the Studebaker wagon
helped to make the West. It has
been one of the most efficient aids
to the advancement of civilization
by making transportation easy for
the pioneer. Many of the first men
in the West took the Studebaker
with them. They are still buying
Studebakers, having learned their
value by experience. The Stude-
baker is better to-day than ever
before.

Studebakers also make a full line of all
kinds of vehicles, harness, etc. They
control entire output of the World Buggy
Co. and make the "Lazer Line" of vehicles.
All dealers handle Studebaker goods.
Write us for catalogues, etc.

Studebaker Bros. Mfg. Co.
South Bend, Ind.
WESTERN REPRESENTATIVES:
San Francisco, Cal. Portland, Oregon.
Salt Lake City, Utah.



Everything in Hardware.

Phone No. 83.

Mail Orders Solicited



New Mexico Military Institute.

ROSWELL, NEW MEXICO.

"The West Point of the Southwest."
Army Officer Detailed by War Depart-
ment. Army Inspectors RANK SCHOOL
IN CLASS "A."

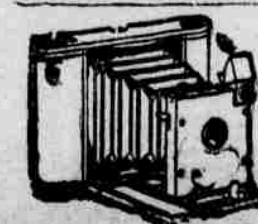
Thorough Academic course, preparin-
young men for college or for business life.
Great amount of open air work. Healthiest
location of any Military School in the Union.
Located in the beautiful Pecos Valley—the
garden spot of the West—at an elevation
of 3,700 feet above sea level, sunshine every
day, but little rain or snow during season.

Eleven officers and instructors, all gradu-
ates from standard eastern colleges. Ten
buildings, thoroughly furnished, heated,
lighted and modern in all respects.

REGENTS—E. A. Cahoon, President; W.
G. Hamilton, Vice President; J. Phelps
White, Treasurer; W. M. Atkinson, Sec-
retary, and W. A. Finlay.

For particulars and illustrated catalogue
address,

COL. JAS. W. WILLSON,
Superintendent.



Kodaks and Photo Supplies
ART PICTURES AND FRAMING
We make a specialty of DEVELOPING, PRINT-
ING and ENLARGING. Mail Orders Given Prompt
Attention. Send for Catalogue.
KOWLAND & DEWEY COMPANY,
510 S. Broadway, Los Angeles, Calif.



Santa Fe Central Rail- way Company

TIME TABLE

Effective Sunday, August 11, 1907.

South Bound		North Bound	
No. 1	Stations	No. 2	Stations
1:40 p.m.	Leave Santa Fe	7:00 a.m.	Arrive Santa Fe
2:40 p.m.	Arrive Torrance	8:00 a.m.	Arrive Torrance
3:40 p.m.	Arrive El Paso	9:00 a.m.	Arrive El Paso
4:40 p.m.	Arrive Fort Worth	10:00 a.m.	Arrive Fort Worth
5:40 p.m.	Arrive Dallas	11:00 a.m.	Arrive Dallas
6:40 p.m.	Arrive Houston	12:00 p.m.	Arrive Houston
7:40 p.m.	Arrive New Orleans	1:00 p.m.	Arrive New Orleans

Freight, Passenger and Steamship business.
Pullman berths secured by wire.
Connections: At Santa Fe, with Denver & Rio Grande Railroad, and Atchison, Topeka & Santa Fe Railway. At Kennedy, with Atchison, Topeka & Santa Fe Railway. At Torrance with El Paso & Southwestern System.

S. B. GRIMSHAW,
General Freight and Passenger Agent.

HOTEL ARRIVALS

Palace.
W. C. Reid, Roswell; D. M. Colvin, W. H. George, Denver; George J. Diamond, St. Paul, Minnesota; M. H. Spiro, St. Louis.

Claire.
Henry Essinger, St. Joseph Mo.; S. E. Guthrie, Hanover; F. H. Kutnewsky, Salt Lake City, Utah; C. A. Chase, Fort Morgan, Colorado; Emory Cobb, Jr., C. W. Thomas, Pueblo, Colorado; A. N. Cutting, S. F. Sanderson, Denver; J. W. Evans, Jr., Tucumcari; E. A. Mayo, Tularosa; A. E. Kennedy; Fred T. Fisher, Allan McGilvray, John McGilvray, Estancia; William McIntosh, McIntosh; V. P. Moore, Tucumcari; F. O. Johnson and wife, McPherson, Kansas; W. H. Shed, Denver; W. S. Piper, D. S. Piper, Cleveland, Ohio; C. H. Hooton, Mansfield, Missouri.

Normandie.
C. J. Wood, Aztec; Charles Pearson and wife, Durango, Colorado; D. R. Carter, Pecos; Felix Sanchez and wife, Taos; Bonifacio Trujillo, Gabriel Trujillo, Rio Chiquito; W. C. Asher, W. G. Harris, L. D. Rushing, Stanley; F. E. Tillard, Ted Jaques, Hinton, Oklahoma; Michael Downs, Las Vegas; C. M. Llewellyn, Philadelphia; Dorotes Sosa, San Miguel; Mrs. Mollie M. J. Miss Mary Jones, Estancia.

Coronado.
Juan de Dios, Torrance; Frank Sandoval, El Paso; L. H. Stambaugh, Gold Hill; Jose S. Belya, Palma; S. A. Goldsmith, Estancia; F. A. Faber, Gallup; D. S. Piper, W. S. Piper, Cleveland, Ohio.

Don't Take the Risk.

When you have a bad cough or cold do not let it drag along until it becomes chronic bronchitis or develops into an attack of pneumonia, but give it the attention it deserves and get rid of it. Take Chamberlain's Cough Remedy and you are sure of prompt relief. From a small beginning the sale and use of this preparation has extended to all parts of the United States and to many foreign countries. Its many remarkable cures of coughs and colds have won for it this wide reputation and extensive use. Sold by all druggists.

SANTA FE SINKS DEEP WELL AT WHITEWATER

Whitewater, N. M., Jan. 16.—The Santa Fe railway has been boring for water at this place for some time and has just struck a fine flow of water at a depth of 155 feet. The railway has been obliged heretofore to haul water from Spaulding and the finding of a good flow of water here means a saving of large expense. The water is being analyzed as to its value for steam purposes at the company's office in Topeka. Should the water prove to be all right the company will go down to a maximum depth of a thousand feet, if a sufficient flow is not found at less depth, steam pumps will be installed which will be capable of raising the water from a great depth. Whitewater is nearly half way between Deming and Silver City and is the junction of the Santa Rita branch of the Santa Fe railway.

The finest coffee substitute ever made, has recently been produced by Dr. Shoop of Racine, Wisconsin. You don't have to boil it twenty or thirty minutes. "Made in a minute," says the doctor. "Health Coffee" is really the closest imitation ever yet produced. Not a grain of real coffee in it either. Health Coffee imitation is made from pure toasted cereals or grains, with malt, nuts, etc. Really it would fool an expert—were he to unknowingly drink it for coffee. For sale by Cartwright Davis Co.

PROPOSALS FOR BUILDINGS. Department of the Interior, Office of Indian Affairs, Washington, D. C. January 10, 1908. Sealed Proposals, plainly marked on the outside of the envelope "Proposals for Buildings, San Juan School, N. M." and addressed to the Commissioner of Indian Affairs, Washington, D. C. will be received at the Indian Office until 2 o'clock p. m. Feb. 18, 1908 for furnishing materials and labor to construct school building and hostal at the San Juan school, New Mexico. In strict compliance with the plans and specifications which may be examined at this Office the offices of the New Mexican, Santa Fe N. M., Citizen, Albuquerque, N. M., Evening Herald, Durango, Colo. Builder and Contractor, Los Angeles, Cal. Builders and Traders Exchanges, St. Paul, Minn., Minneapolis, Minn., Omaha, Neb., Northwestern Manufacturers Assn., St. Paul, Minn., U. S. Indian Warhouses at Chicago, Ill., St. Louis, Mo., Omaha, Neb., and at the School. For further information apply to Wm. T. Shelton, Supr. Shiprock, N. M. C. F. LARABEE Acting Commissioner.

Fever Sore.

Fever sores and old chronic sores should not be healed entirely, but should be kept in healthy condition. This can be done by applying Chamberlain's Salve. This salve has no superior for this purpose. It is also most excellent for chapped hands, sore nipples, burns and diseases of the skin. For sale by all druggists.

The New Mexican Printing Company has ready and for sale up-to-date and correct compilations of the territorial incorporation laws, price 75 cents, of the territorial road laws, price 50 cents, and of the territorial mining laws, price 50 cents per copy. These can be purchased by applying in person or by mail at the office of the company.

Orino Laxative Fruit Syrup, the new Laxative, stimulates, but does not irritate. It is the best Laxative. Guaranteed or your money back. Sold by The Ireland Pharmacy.

INVITE A TEST.

The Ireland Pharmacy Ask Catarrh Sufferers to Try Hyomei on their Guarantees.

The Ireland Pharmacy invite all who suffer from any form of catarrhal troubles to get a Hyomei outfit from them with their absolute guarantee that if it does not give perfect satisfaction, the money will be refunded upon request.

There is no other treatment for catarrh that in any way resembles Hyomei, none that gives such quick curative results and lasting satisfaction, no medicine that can take its place, none that can be sold on a guarantee like Gillivray, John McGilvray, Estancia; William McIntosh, McIntosh; V. P. Moore, Tucumcari; F. O. Johnson and wife, McPherson, Kansas; W. H. Shed, Denver; W. S. Piper, D. S. Piper, Cleveland, Ohio; C. H. Hooton, Mansfield, Missouri.

Catarrh is a germ disease and can be cured only by breathing Hyomei, so that the most remote air cells in the nose, throat and lungs are reached by its antiseptic healing powers. In this way all catarrhal germs are killed, the irritated mucous membrane is healed and catarrh is driven from the system. This wonderful medicated air treatment does not drug and derange the stomach, but is breathed through a little pocket inhaler that goes with every dollar outfit.

The unusual way in which The Ireland Pharmacy attests their confidence in the remedy.

(Homestead Entry No. 7484.)

Notice For Publication.

Department of the Interior,
Land Office at Santa Fe, N. M.

December 18, 1907.

Notice is hereby given that Canuto Madrid de Leyba, of Galisteo, N. M., has filed notice of his intention to make final five year proof in support of his claim, viz: Homestead Entry No. 7484, made April 9, 1903 for the W 1/2 NW 1/4, W 1/2 SW 1/2, section 34, township 14N, range 9E, and that said proof will be made before Register and Receiver at Santa Fe, N. M., on Jan. 22, 1908.

He names the following witnesses to prove his continuous residence upon, and cultivation of the land, viz:

Juan N. Sandoval, Crespin Leyba, Canuto Leyba, Juan Leyba, all of Galisteo, N. M.

MAUEL R. OTERO,
Register.

"BOOTH'S FRESH OYSTERS."

Black Bass, Lake Trout, Perch, Salmon, Silver Herring, Bullheads, Frog's Legs, Lake Trout, Lobsters and Shrimp can be found only at the Bon Ton Restaurant, where they can cook just to your taste.

DeWitt's Carbolicized Witoh Hazel Salve is especially recommended for piles. Sold by The Ireland Pharmacy.

FRATERNAL SOCIETIES.

MAÇONIC.

Montezuma Lodge, No. 1, A. F. & A. M. Regular communication first Monday of each month at Masonic Hall at 7:30 p. m.
N. L. KING, W. M.
ALAN R. McCORD, Sec'y.

Santa Fe Chapter, No. 1, R. A. M. Regular convocation second Monday of each month at Masonic Hall at 7:30 p. m.
S. SPITZ, H. P.
ARTHUR SELIGMAN, Sec'y.

Sant Fe Commandery No. 1, K. T. Regular conclave second Saturday in each month at Masonic Hall
7:30 p. m. C. J. CRANDALL, E. O.
H. F. STEPHENS, Recorder.

Santa Fe Lodge of Perfection No. 1, 14th degree, Ancient and Accepted Scottish Rite of Free Masonry meets on the third Saturday of each month at 7:30 o'clock in the evening in Masonic Hall, south side of Plaza. Visiting Scottish Rite Masons are cordially invited to attend.
CHARLES A. WHEELON, 32,
Venerable Master.
HENRY F. STEPHENS, 14, Sec.

I. O. O. F.

Santa Fe Lodge, No. 2, I. O. O. F. meets every Thursday evening in Odd Fellows' Hall, San Francisco Street. Visiting brothers welcome.
MAX KALTER, N. G.
LEO HERSCH, V. G.
DAVID L. MILLER, Sec'y.

B. P. O. E.

Santa Fe Lodge, No. 460, B. P. O. E. holds its regular session on the second and fourth Wednesdays of each month. Visiting brothers are invited and welcome.
R. H. HANNA, E. R.
J. D. SENA, Sec'y.

"BOOTH'S OYSTERS."

The very finest in the land have just been received at the Bon Ton Restaurant. These are the very first of the season and can be found only at this place where they are up-to-date in everything. A trial will convince you.

St. Louis Rocky Mt. & Pacific Railway Co.

PASSENGER SCHEDULE

In Effect September 1, 1907.

No. 31 Monday Wed. Friday.	Auto Car Daily Ex. Sun.	No. 1 Daily	Miles from Raton	STATIONS		No. 2 Daily	Auto Car Daily Ex. Sun.	No. 3 Monday Wednesday Friday.
7 00 a.m.		4 00 p.m.	0	Leaves	RATON, N. M.	12 15 p.m.		5 35 p.m.
7 25 a.m.		4 23 p.m.	7	Arrives	CLIFTON HOUSE	11 57 a.m.		5 05 p.m.
7 50 a.m.		4 43 p.m.	13	Leaves	PRESTON	11 40 a.m.		5 20 p.m.
8 20 a.m.		5 00 p.m.	20	Arrives	ROEBLER JUNCTION	1 00 a.m.		5 10 p.m.
		5 17 p.m.	23	Leaves	ROEBLER	11 10 a.m.		4 05 p.m.
		5 55 p.m.	33	Arrives	VERMEJO	10 25 a.m.		4 05 p.m.
9 10 a.m.		6 10 p.m.	41	Leaves	CERROSOLO	9 53 a.m.		3 45 p.m.
9 38 a.m.		6 38 p.m.	47	Arrives	CIMARRON	9 35 a.m.		3 15 p.m.
10 20 a.m.	7 00 a.m.	6 30 p.m.	47	Leaves	CLIFTON HOUSE	9 15 a.m.	5 55 p.m.	2 40 p.m.
11 30 p.m.	7 45 a.m.	6 50 p.m.	60	Arrives	CLIFTON HOUSE	8 55 a.m.	5 10 p.m.	1 40 p.m.

No. 21 Tuesday Thursday Saturday	Miles from Des Moines	STATIONS		No. 20 Tuesday Thursday Saturday	
	0	Leaves	DESMOINES, N. M.	Arrive	10 00 a.m.
11 00 a.m.	11	Arrives	CAPULIN VEGAS	Leaves	9 25 a.m.
1 20 p.m.	22	Leaves	VIGIL	Arrives	8 45 a.m.
1 40 p.m.	25	Arrives	THOMPSON	Leaves	8 30 a.m.
1 55 p.m.	31	Leaves	CUNNINGHAM	Arrives	8 05 a.m.
2 10 p.m.	43	Arrive	CLIFTON HOUSE JUNCTION	Leaves	7 30 a.m.
2 30 p.m.	43	Leaves	CLIFTON HOUSE JUNCTION	Arrive	7 20 a.m.
2 40 p.m.	42	Arrive	RATON, N. M.	Leaves	7 00 a.m.

COME TO BELEN, N. M., Future Railroad Metropolis of New Mexico. Located on Belen Cut-off of Santa Fe R'y.

Belen is 31 miles south of Albuquerque, N. M., at the junction of the Main Line of the Santa Fe System—leading East and West from Chicago, Kansas City, Galveston and points East to San Francisco, Los Angeles, El Paso and Old Mexico.

1,000 business and residence lots, also 25x145 feet laid out with broad 80 and 70-foot streets, with alleys 20 feet wide, with beautiful lake and public park and grand old shade trees; public school house, costing \$16,000; churches; large mercantile establishments; the Belen Patent Roller Mill, capacity 150 barrels daily; large winery; three hotels, Commercial Club; a population of 1,500 people; several restaurants, etc. Belen is the largest shipping point for wood, flour, wheat, wine, beans and hay in Central New Mexico. Its importance as a great commercial railroad city in the near future cannot be estimated.

The Belen Town and Improvement Company are owners of the BELEN TOWNSITE

JOHN BECKER, President.

WM. M. BERGER, Secretary.

The Belen Town and Improvement Company

ALL FAST LIMITED EXPRESS, MAIL AND FREIGHT TRAINS OF THE SANTA FE WILL GO OVER THE MAIN LINE THROUGH TO BELEN, EAST AND WEST, NORTH AND SOUTH.

The lots offered are in the center of the city, well graded (many of them improved by cultivation); no sand or gravel. We need a first-class bakery, tailor shop, shoe house, jeweler, plumbing shop, planing mill, coal and wood yard, drug store, harness shop etc. etc.; also a first-class modern hotel.

Our prices of lots are low and terms on easy payments; title perfect; warranty deeds. One-third purchase money, cash. Two-thirds may remain on note, with mortgage as security, for one year, with 8 per cent interest thereon.

Apply at once for map and prices if you wish to secure the choicest lots.

SNOWFALL BULLETIN

Santa Fe, N. M., January 11, 1908.

The snowfall during November and December was generally confined to limited areas in the higher mountain regions of the middle Rio Grande watershed, the Jemez Forest Reserve, the Pecos Forest Reserve, the Sandias, the Capitan and the White mountains. In the lower altitudes and valleys there was practically no snow on the ground. The reports show that the snow in the mountains was loose and quite evenly distributed, but in some of the canyons it had drifted, and varied in depth from a few inches to six feet or more. Taken as a whole the present indications for future water supply are favorable.

In the southwest portion of the Territory, over the San Francisco, Gila and Mimbres watershed, there was no snow on the ground at the close of the month. Over the other watersheds the average depths in the mountains were as follows: San Juan and Northwest, nearly 14 inches; Rio Grande, 19 inches; Canadian and Northeast, 7 inches; Pecos and Southeast, over 8 inches.

The following notes are from reports of correspondents:

San Juan Watershed and Northwest.

Chromo—N. B. Price, Forest Ranger—The snow is evenly distributed in valleys, but loose and drifted in mountains. The outlook for water is good. Pagosa Springs, Colo.—A. L. Switzer, Forest Ranger—The snow is light but evenly distributed. More ice has formed than last year. The outlook for water is good. Dulce—E. Wirt—The snow has been light and the prospect for the future is not encouraging. Aztec—J. G. Kello—The snow is evenly distributed and the outlook for water supply is good. Blanco—W. A. Creager—There is no snow in the valley but there is more in the foothills than at this time last year. Cedar Hill—Wm. Craig—The snow is evenly distributed and about the same amount as last year. Crozier—Lee T. Thayer—There is no snow in this vicinity. Flora Vista—R. W. Keflin—We have no snow; it melted soon after it fell. Putnam—R. Wetherill—There is no snow in this vicinity. Blackrock—W. A. Roberts—There is no snow here. Guan—H. Newman—We have had comparatively little snow this winter. Tohatchi—L. P. Brink—There is very little snow in the mountains. Zuni—E. J. Davis—The snow is unevenly distributed in drifts and canyons. Coperton—J. B. Schell—About ten inches of snow fell during the month but it did not drift, and considerable remains on the north sides of foothills.

Rio Grande Watershed.

Canjilon—T. D. Vargas—Near the top of the mountains the snow is in drifts 10 to 15 feet deep, and the outlook for water supply is very good. Chama—Geo. Huth—The snow is about the same depth as last year, and it is quite evenly distributed. Espanola—C. L. Pollard—There is less snow than last year and it is not drifted. The mountain pass from this side of the range over to Mora is still open, which shows there is very little drifted snow in the mountains. Vallecitos—George Marsh, Forest Guard—The snow is loose and has drifted into the canyons on the west side of the mountains. Ojo Caliente—Hon. A. Joseph—There is about six inches more of snow on the mountains than at this time last year. It is evenly distributed and frozen hard, and it will last until next spring, assuring a good supply for irrigation. Red River—R. W. Penn—The snow is evenly distributed and compact, and there will be plenty of water in the spring. Santa Fe—Frank Owen—There is considerable snow in the

mountains; in the short canyons and over the north slopes the depth is 20 to 24 inches on the level, and six feet in drifts. In the opening near the head of Santa Fe canyon, at an elevation of about 11,000 feet, the depth of snow is three feet on the level. San Pedro—N. J. Strumquist—There is fully two and a half feet of snow in the mountains. San Rafael—Chas. M. Grover—The snow on the mountains is about the same depth as last year. Placitas—Teodoro Chavez—The snow is evenly distributed and the water outlook is good. Albuquerque—Fred Weir, Forest Ranger—The snow in the Sandia mountains is mostly on the north slope and it is very compact. The prospect for water supply is good. Estancia—M. A. Romero—There is more snow than usual in the Sandias and it is evenly distributed. There will be plenty of water.

San Francisco, Gila and Mimbres.

Over this watershed there was no snow on the ground at the close of the month. During November snow fell to the depth of several inches but it melted within a few days. Throughout the month of December there was no precipitation except light rains in the higher mountain districts.

Canadian and Northeast Watershed.

Baldy—B. W. Gleske—The snow is loose and lies only on the north side of the mountains. The prospect for water is not encouraging. Black Lake—G. Martinez—It has been very cold and we have had very little snow. Dawson—Geo. L. Bradford—There is no snow on the ground here; we have had only one light snow and that fell at the close of November. Elizabethtown—J. F. Carrington—The snow is very loose and drifted into the canyons; there is a fair outlook for water. In the higher mountains the snow is very deep. Lynn—P. F. Harrington—In the higher altitudes there were heavy snows all thru December and the prospects for water supply are good. Halls Peak—F. E. Franklin—There is less snow than usual; we have had only about two inches. The outlook so far is not encouraging. Corrumpa—E. D. Wright—About seven inches of snow has fallen so far this winter. Roelada—J. A. Rudolph—The snowfall has been considerably less than usual.

Pecos Watershed and Southeast.

Winsor's—H. C. Viles, Forest Ranger—There is no snow below an elevation of 8,000 feet, except on the northern slopes where it ranges from one to two feet in depth; above this altitude the mountains of the Pecos Forest Reserve are covered from 1 to 4 feet. The outlook is excellent for an abundant water supply. Cowles—O. W. Alexander—The snow is very unevenly distributed, compact in the canyons and on north hillsides but loose in the timber. The outlook for summer water is promising. East Las Vegas—H. A. Harvey—On the mountains west of here there is no snow on the southern slopes, but on the northern slopes of Elk mountain the snow is about eight inches deep. Olquin—Postmaster—The snow is drifted and in many places it is from 3 to 4 feet deep. Glorieta—W. M. Taber—Comparatively little snow has fallen here this season. Alto—J. W. Stephenson—The snow is compact and drifted into the canyons. Arabela—L. Pacheco—There is snow on top of Capitan mountains and plenty on the White mountain range. Hondo—Caroline F. Vorwerk—There is a great deal of snow on the White mountains. Richardson—H. A. Scott—There is snow in the canyons of the Capitan mountains but none over the lower levels. Glen—Miss Mary Cooley—About 3 inches of snow fell here in November and 6 inches in December. Wright—D. P. Allen—Two feet of snow has fallen to date but it is mostly melted. Carlsbad—J. T. Bolton—There is about two inches of

snow in the mountains and it is evenly distributed.

Snow on the ground December 31, 1907.

Stations.	Counties.	In valleys.	Nearby Mountains.
SAN JUAN WATERSHED AND NORTHWEST.		In.	In.
Arboles, Colo.	Archuleta	2.0	11.0
Chromo, Colo.		8.0	18.0
Pagosa Spg., Colo.	Rio Arriba	8.0	30.0
Dawson		6.0	6.0
Edible		6.0	15.0
Rosa		4.0	12.0
Aztec	San Juan	3.0	12.0
Cedar Hill		3.0	21.0
Guan	Mekinley	0.0	3.0
Coperton	Valencia	4.0	4.0
RIO GRANDE.			
Canjilon	Rio Arriba	6.0	30.0
Chama		15.0	34.0
El Vado		3.0	5.0
Espanola		0.0	3.0
Vallecitos		4.0	24.0
Arroyo Seco	Taos	1.0	23.0
Cerro		6.0	35.0
Caliente		2.0	14.0
Gold Hill		15.0	24.0
Hobart	Santa Fe	0.0	6.0
Nambe		0.0	6.0
Santa Fe		0.0	24.0
San Pedro		0.0	15.0
San Rafael	Valencia	2.0	12.0
Las Alamos		0.0	36.0
Placitas	Sandoval	0.0	24.0
Albuquerque		0.0	45.0
Chilili		4.0	15.0
Estancia	Torrance	15.0	20.0
Arrey	Sierra	0.0	10.0
Chloride		0.0	3.0
SAN FRANCISCO, GILA AND MIMBRES.			
Winsor	Socorro	0.0	0.0
Cliff	Grant	0.0	0.0
Mimbres		0.0	0.0
Pinos Altos		0.0	0.0
Steeple Rock		0.0	0.0
CANADIAN AND NORTHEAST.			
Baldy	Colfax	0.0	8.0
Black Lake		0.0	0.0
Crowley		0.0	0.0
Elizabethtown		2.0	15.0
Lynn		0.0	0.0
Hall's Peak	Mora	0.0	0.0
Cowles	Union	0.0	24.0
Roelada	San Miguel	0.0	6.0
PECOS AND SOUTHEAST.			
Winsor	San Miguel	35.0	
Cowles		6.0	20.0
Las Vegas		2.0	8.0
Olquin		4.0	5.0
Glorieta	Santa Fe	4.0	6.0
Puerto de Luna	Guadalupe	3.0	3.5
Alto	Lincoln	0.0	4.0
Arabela		0.0	0.0
Weed	Otero	0.0	T
Wright		0.0	T
Carlsbad	Eddy	0.0	2.0

T-Trace.

J. B. SLOAN,

Acting Section Director.

Stomach Trouble Cured.

If you have any trouble with your stomach you should take Chamberlain's Stomach and Liver Tablets. Mr. J. P. Klotz of Edina, Mo., says: "I have used a great many different medicines for stomach trouble, but find Chamberlain's Stomach and Liver Tablets more beneficial than any other remedy I ever used." For sale by all druggists.

The New Mexican Printing Company is prepared to furnish cards de visite for ladies or gentlemen on short notice, in first class style at reasonable prices, either engraved or printed. Call on the New Mexican Printing Company.

Simple Remedy For La Grippe.

La Grippe coughs are dangerous as they frequently develop into pneumonia. Foley's Honey and Tar not only stops the cough but heals and strengthens the lungs so that no serious results need be feared. The genuine Foley's Honey and Tar contains no harmful drugs and is in a yellow package. Refuse substitutes. Sold by The Ireland Pharmacy.

The New Mexican Printing Company is prepared to do the best of brief work in short order and at very reasonable rates. Lawyers who desire to have their briefs printed rapidly and correctly and to present them to the Supreme Court now in session here on time, should call on the New Mexican Printing Company.

Take DeWitt's Kidney and Bladder Pills. They promptly relieve backache and weak back. Sold by The Ireland Pharmacy.

Subscribe for the New Mexican.

WANTS

WANTED—A roll top desk in good condition. G. M. Fleming, Box 235.

FOR RENT—Two furnished rooms with modern conveniences. Apply this office.

WANTED—A girl for general housework. Apply to Mrs. R. J. Palen, 231 Palace avenue.

MONEY TO LOAN—One thousand dollars. Eastern money on mortgage, at 10 per cent. L. B. Prince.

WANTED—For U. S. Army, able-bodied, unmarried men, between ages of 18 and 35; citizens of United States, of good character and temperate habits, who can speak, read and write English. For information apply to recruiting officer, Laughlin Block, Santa Fe, New Mexico.

STRONG INDICATIONS OF OIL FOUND

While Drilling For Artesian Water Near Lake Arthur Petroleum Sand Is Encountered.

Lake Arthur, N. M., Jan. 16—An oil field has been found ten miles southwest of Lake Arthur. A well was being sunk for artesian water when at a depth of 850 feet it produced oil sand for the next fifty feet.

Experts have pronounced this oil sand a sure indication of large oil deposits. The driller has spent years in the oil fields, and says that he is now on the hardest kind of rock, and that when he gets through it, he expects to strike oil.

It seems certain that the Pecos valley from one end to the other is underlaid with oil deposits, awaiting the deep drillers. A great many oil fillings have been made in the Lake Arthur fields.

Drilling at Santa Rosa.

Santa Rosa, N. M., Jan. 16—Work on the Santa Rosa oil wells is progressing rapidly. The drill is running twenty-four hours a day and seven days a week. Drillers and owners are confident that oil will be struck above the 1000 feet mark.

Public Speaker Interrupted.

Public speakers are frequently interrupted by people coughing. This would not happen if Foley's Honey and Tar were taken as it cures coughs colds and prevents pneumonia and consumption. The genuine contains no opiates and is in a yellow package. Sold by The Ireland Pharmacy.

The seals and record books for notaries public for sale by the New Mexican Printing Company at very reasonable rates. Seals for incorporated companies are also handled. Call at or address the New Mexican Printing Company, Santa Fe, New Mexico.

Danger in Asking Advice.

When you have a cough or cold do not ask someone what is good for it, as there is danger of taking some unknown preparation. Foley's Honey and Tar cures coughs, colds and prevents pneumonia. The genuine is in a yellow package. Refuse substitutes. For sale by The Ireland Pharmacy.

The New Mexican Printing Company will do your job work with neatness and dispatch.

Trial Catarrh treatments are being mailed out free, on request, by Dr. Shoop, Racine, Wis. These tests are proving to the people—without a penny's cost—the great value of this scientific prescription known to druggists everywhere as Dr. Shoop's Catarrh Remedy. Sold by all dealers.

Wells Fargo & Company

Express
General Express Forwarders

All Parts of the World.

Save Money and Inconvenience by Purchasing Wells Fargo DOMESTIC MONEY ORDERS, TRAVELERS' MONEY ORDERS, FOREIGN MONEY ORDERS. Payable Throughout the United States, Canada, Mexico and all Foreign Countries.

REMITTANCES SENT BY TELEGRAPH.

J. D. BARNES, Agent

Roswell Automobile Co.

Mail and Passenger Line between Roswell, N. M., and Torrance, N. M., daily, Sunday included, connection with all trains on the Rock Island and Santa Fe Central Railways. Leave Roswell at 1 p. m. Leave Torrance on arrival of Rock Island train, due at 2 a. m. Running time between the two points five hours, meals furnished at Camp Needmore, free of charge. Excursion parties accommodated by notifying the company two days in advance. One of the best known and best purposes on the market. Two of the best known and best machines for all purposes on the market. Address all communication s and inquiries to the

Roswell Automobile Co.

Roswell, New Mexico.

Rubber Stamps

WHEN YOU FIND YOURSELF WRITING THE SAME THING FREQUENTLY IN THE COURSE OF YOUR BUSINESS, REMEMBER A RUBBER STAMP WILL SAVE YOU A GREAT DEAL OF TIME. BUSY PEOPLE ARE USING RUBBER STAMPS MORE NOW THAN EVER BEFORE BECAUSE THEY SAVE TIME, AND TIME IS MONEY THESE DAYS

PRICE-LIST

One-line Stamp, not over 2½ inches long.....15c
Each additional line on same stamp, 10c.
One-line Stamp, over 2½ and not over 3½ inches long..20c
Each additional line on same stamp, 15c.
One-line Stamp, over 3½ and not over 5 inches long..25c
Each additional line on same stamp, 20c.
One-line Stamp, over 5 inches long, per inch.....35c
Each additional line, same price.
(Curved lines on Stamp count as two lines.)
Borders of all shapes, under 3 inches long way, 25c extra.
Larger sizes at proportionate prices.
Where type used is over one-half inch in size, we charge for one line for each one-half inch or fraction.
DATES, ETC.

Local Dater—any town and date for ten years.....\$1.00
Ledger Dater—month, day and year in ¼-inch......50
Regular line Dater......35
Defiance Model Band Dater.....1.50
Fac-Simile Signatures, Rubber Stamp and Wood Cut. 1.50
Pearl Check Protector.....1.00
SELF-INKING STAMP PADS.

1½x2½, 10c; 2x3½, 15c; 2½x3½, 25c; 2½x4½, 35c; 3½x4½, 50c; 4½x7½, 75c.

FOR TYPE SPECIMENS ADDRESS

NEW MEXICAN PRINTING CO.

SANTA FE, NEW MEXICO

CARTWRIGHT-DAVIS CO.

No. 250 San Francisco Street

Grocery Telephone No. 4. Meat Market. Telephone No. 49.

GROCERS, BAKERS, BUTCHERS!

HOME MADE SAUSAGE.

We have a new sausage machine in the market and we are now turning out a fine quality of home made pork sausage that we guarantee to be all pork. Per pound.....15c

PEELED GRAPES.

While in London recently a representative of a Chicago house came across a delicacy which is new to the people of the United States. It is a peeled grape put up in Spain which produces the finest Muscat grape in the world. Nice to use in salads or with gelatine. Or can be used in its natural state of course. No. 1 1/2 tins each.....30c

NEW CONDIMENTS.

We have lately stocked Durkee's Celery Pepper, which is similar to celery salt save that pepper is used in the m-ture in the stead of salt. Good sized bottles, 20c. Heinz's Mandelay Sauce is similar to Worcestershire, except that it is hotter and is thicker in consistency. Per bottle 35c

SALMON CUTLETS.

If you want the finest ever, ask for the Four Hundred Brand of salmon in oval cans. Each can contains one piece of Columbia River salmon of the best selection cut from the middle portion of the fish. Cans are somewhat larger than the ordinary round can and it makes a nice dish for luncheon or tea. Often used for dinners in absence of the fresh fish. Per can.....35c

SLICED BACON.

Did you ever use bacon sliced on our patent slicing machine? Much superior to the knife sliced article. Each slice of uniform thickness and as thin as one could wish.

HIGH GRADE SPICES.

All our spices are pure and of good quality, but we can especially recommend Durkee's Saigon Cinnamon and Special White Pepper in 4 oz. cans. They are superior in flavor and strength to any thing we have seen. Saigon Cinnamon.....30c White Pepper.....25c

SEAL BRAND COFFEE.

Owing to the unusually large demand for Seal Coffee during the holidays we were sold entirely out for a few days. We now have a good supply of this famous brand. It is sold only in one and two pound cans at 40c per pound.

SEALSHIPT.

The word sealshipt refers to the manner in which our oysters are shipped. They place in a sealed container just oysters and nothing else, no water, no preservative, no ice. This container is placed in a large tub which is kept filled with ice that preserves the full fine flavor of our Blue Point oysters as they are brought to us by fast express, direct from the beds at Long Island. Try them and see how good oysters can be, even at this distance from old ocean.

DUDROW & MONTENIE

FUNERAL DIRECTORS
AND
EMBALMERS

Black and White Hearse.

All Kinds of Picture Framing

DUDROW'S OFFICE BUILDING. DAY PHONE 35

Residence, Lincoln Avenue. Night and Sundays. Telephone No. 142.

COAL AND WOOD

Cerrillos Lump,
Monero Lump,
Anthracite Mixed.Anthracite Furnace.
Smithing Coal.
Sawed Wood and Kinkling.

CAPITAL COAL YARD.

Phone No. 85. Office Garfield Avenue, near A., T. and S. F. Depot.

OUR PLACE

OTTO RETSCH, Proprietor.

FALSTAFF BOTTLED BEER.

ANY QUANTITY—FROM A PINT UP.

Fine Wines, Liquors and cigars.

WEST SIDE OF PLAZA : : : SANTA FE, N.M.

LARGEST STOCK AT LOWEST PRICES

We are making a speciality of Mexican Drawn Work, Indian Bankets and Filigree Jewelry

COME IN AND LOOK AROUND

Visitors are Always Welcome.

We have discovered a new deposit of Turquoise at our mines near Cerrillos and have elegant stores of all sizes. MOUNTED OR UNMOUNTED.

AT CANDELARIO'S CURIO STORE

J. S. Candelario Prop.

301-303 San Francisco Street

Santa Fe, N. M.

Personal Mention.

(Continued From Page Four)

W. S. Hopewell, of Albuquerque, arrived in the city on the noon train today, coming to attend the Easley-McGillivray wedding.

V. W. Moore, a Tucumcari attorney, reached the city yesterday. He came to attend the sessions of the supreme court and was admitted to the practice of law in the territory today.

Minor City Topics

(Continued from Page Five.)

All trains are reported on time this evening.

Probate Clerk George W. Armijo has issued marriage licenses to the following: Miss Julia Ethel Easley, of Santa Fe, and Angus McGillivray, of Estancia; Miss Agapita Trujillo and Antonio Vigil, both of Nambe; Miss Maria Juanita Martinez and Esculpito Sandoval, both of Chiamayo; Miss Paulita Ortiz and Luciano Rodriguez, both of Santa Fe; Miss Apollina Rodriguez and Ramon Rael, both of Santa Fe; Miss Francisca Pacheco and Trujillo, both of Chiamayo.

PREPARING FORMS
FOR BOND ISSUES

Money Derived From Sales to Be Used in Building Additions to Territorial Institutions.

Attorney General James M. Hervey was busy today in preparing forms for the several bond issues which will be placed upon the market, and the money derived from their sale will be utilized in making needed improvements to territorial institutions or erecting armories for the National Guard.

The bond issues in question were authorized by the Legislative Assembly in 1901 and this act was approved last year by the Fifty-ninth Congress. The bond issues will be as follows: \$25,000 for additional buildings at the New Mexico Military Institute at Roswell; \$25,000 for the New Mexico College of Agriculture and Mechanic Arts at Mesilla Park; \$25,000 for the New Mexico Insane Asylum at Las Vegas, and \$15,000 for armories to be erected at Albuquerque and Las Vegas.

WEDDING SET FOR
EARLY FEBRUARY

Miss Hampel and Lieutenant McCrimmon Will Be Principals—Will Take Place at Bride's Home

Miss Mary Florence Hampel, daughter of Mr. and Mrs. John Hampel, and Lieutenant Stuart C. McCrimmon will be united in marriage on Wednesday, February 5, at the home of the bride's parents, 227 Agua Fria street. The marriage ceremony will be solemnized at 7:30 p. m., following which a reception will be held from 8 to 11 p. m. Prospective bride and bridegroom both enjoy a wide acquaintance in Santa Fe. Miss Hampel, who is a pretty and winsome young woman was reared in this city. Lieutenant McCrimmon is a member of the clerical force of the local postoffice, having formerly been a mail carrier, and is also an officer in Company F, First Infantry, New Mexico National Guard, which has its headquarters in the Capital.

RICH STRIKE IN
HIGHLAND MARY

Ore in New Mine Contains Gold, Silver and Lead—Claims Being Taken Up in Vicinity.

Special to the New Mexican. Albuquerque, N. M., Jan. 16.—Since the discovery of the Highland Mary mine there has been a rush of prospectors to the Sandia mountains where it is located and a large number of claims are being staked out in its vicinity.

It is expected that the first shipment of ore from the Highland Mary will occur next week, and it is stated that shipments will be made regularly thereafter. It is said that according to the assays the ore runs forty per cent gold, silver and lead.

PANIC FOLLOWS
FIRE IN THEATRE

Moving Picture Machine Explodes in Canadian Play House and Many Hurt in Flight For Exits.

St. Catharines, Ont., Jan. 16.—Fire followed an explosion of a moving picture machine last night in the Hippodrome, a small theater here. The audience numbered about fifty, principally women and children. Several were painfully hurt by being trampled upon in the mad rush for the street. Lorne McDermott, aged 15 years, was fatally burned. The fire caused a loss of \$4,000.

BANK OF ENGLAND
LOWERS DISCOUNT RATE

London, Jan. 16.—The Bank of England today reduced the discount rate from 6 to 5 per cent. Fresh arrivals of gold have materially strengthened this bank's reserve.

HUNTING TRIP
ENDS FATALLY

Robert Woods, Aged 8, is Accidentally Shot and Killed By His Brother, Near San Marcial.

News was received here today from San Marcial to the effect that Robert Woods, the eight year old son of C. C. Woods, a ranchman on the Jorondo, had been accidentally shot by a brother three years older, and died from the effects of the gunshot wound at 9 o'clock this morning at the Woods' ranch.

It is understood that the two boys went on a hunting trip near their home yesterday, and a 22-calibre rifle which the older brother was carrying, was accidentally discharged, the bullet striking the unfortunate lad in the abdomen. The older boy when he saw his brother writhing in pain and blood streaming from the bullet wound, ran home as fast as possible to summon aid and the little fellow was carried to the ranchhouse while a messenger was sent posthaste to town for a doctor.

At 9 o'clock this morning death ensued, the bullet having punctured the intestines. The funeral service will be held tomorrow at San Marcial.

MURDER MYSTERY
ON RESERVATION

Territorial Ranger Goes to Investigate Crime—Prominent Man Reported Murdered.

A tragedy is said to have occurred yesterday on the Mesclero Indian reservation which is located in Lincoln and Otero counties but particulars have not yet been received here.

W. E. Dudley, an officer of the territorial mounted police, has been dispatched to the scene of the crime to assist the Indian police in trailing the assassin.

It is reported that a prominent man was killed but who he was or the exact manner in which the crime was committed and by whom is not known.

HISTORICAL SOCIETY SECURES
PICTURE OF PIONEER.

The Historical Society has just received a large and excellent photograph of the late Roman A. Baca, taken in 1896. It is presented by Lionel H. Graham, of New York, who feels that the Historical Society's collection is the proper place for its permanent preservation. Roman Antonio Baca was one of those remarkable combinations of bravery and courtesy that seem unfortunately to be passing away.

PRESIDENT OF PRUSSIAN
HOUSE OF LORDS DEAD

Berlin, Jan. 16.—The death is announced of Prince Edward F. L. Zuffenhausen Und Knyphausen, president of the Prussian House of Lords. He was born in 1827.

MARKET REPORT.

CLOSING MARKET REPORT.

Atchison 73; pfd. 86 1-2.
New York Central 101 1-2.
Pennsylvania 116.
Southern Pacific 75 1-8; pfd. 83.
Amalgamated 51 5-8.
Steel 29 1-2; pfd. 94 1-4.

MONEYS AND METALS.

New York, Jan. 16.—Prime mercantile paper 6@7. Money on call steady 2 1-2@4.
New York, Jan. 16.—Lead quiet 3.70@3.75. Lake copper quiet 13 3-4@14. Silver 56.
St. Louis, Jan. 16.—Spelter firm 4.50.

WOOL MARKET.

St. Louis, Jan. 16.—Wool steady. Territory and western mediums 20@23. Fine medium 18@19. Fine 15@17.

GRAIN, PORK, LARD AND RIBS.

Chicago, Jan. 16.—Wheat—May 103 3-4@78; July 98 1-2.
Corn—May 60 5-8@34; July 59 3-4.
Oats—May 52 1-2; July 47 3-8@1-2.
Pork—Jan. 12.92 1-2; May 13.47 1-2@50.
Lard—Jan. 7.80; May 8.05.
Ribs—Jan. 56.85; May 7.22 1-2.

LIVE STOCK.

Chicago, Jan. 16.—Cattle—Receipts 10,500. Market for good grades steady. Others weak. Beeves \$3.65@3.80; Cows and heifers \$1.50@4.10; Texans \$3.20@4; calves \$5.50@7.50; westerns \$3.75@4.60; stockers and feeders \$2.40@4.50.
Sheep — Receipts 15,000. Market steady. Westerns \$3.50@5.75; yearlings \$5@6; lambs \$5.40@7.35; westerns \$5.50@7.15.
Kansas City Jan. 16.—Cattle—7,000. —Market steady.—Southern steers, \$4.00@4.75; southern cows, \$2.50@3.70; stockers and feeders, \$3.25@4.60; bulls, \$2.80@4.00; calves, \$4.00@7.00; western steers, \$4.00@5.75; western cows, \$2.50@4.25.
Sheep — 6,000.—Market steady to 110 cents lower. Muttons, \$4.50@5.60; lambs, \$6.30@7.00; range wethers, \$4.50@6.25; fed ewes, \$4.00@5.00.

South Omaha, Jan. 16.—Cattle—Receipts 5,600. Market steady to shade lower. Western steers \$4.75@4.10; range cows and heifers \$2@3.75; canners \$1.75@2.75; stockers and feeders \$2@4.60; calves \$3@5.75; bulls \$2@4.
Sheep — Receipts 6,000. Market slow to 10c lower. Yearlings \$5.50@6; wethers \$5@5.50; ewes \$4.85@5.25; lambs \$6.50@7.15.

NOTICE TO THE PUBLIC

We must raise \$5,000 right away

and in order to do so we are going to cut our profits all off.

THIS IS FOR CASH ONLY

Commencing Saturday Jan. 18, 1908.

We change methods of doing business and SELL FOR CASH ONLY. Everybody come and get the benefit of these LOW CASH PRICES as in the future we intend to do a STRICTLY CASH business at the lowest prices.

BEEF.		MUTTON.	
Porterhouse Steak	12 1-2	Veal Stew	.10
Sirloin Steak	12 1-2	Pork Sausage, per pound	.10
No. 1, Round Steak	12 1-2	Bologna, 3 pounds for	.25
No. 2, Round Steak	.11	Weinerwurst	.10
Shoulder Steak	.10	Legs Lamb	.15
Shoulder Pot Roast	.8 to .10	Lamb stew	.12 1-2
Prime Rib Roast	12 1-2	Lamb chops	.18
7 Ribs in Set	.10	Mutton Legs	.12 1-2
Flank	.6	Mutton Chops	.15
Brisket	.6	Mutton Stew	.8
PORK.		Pickled Pigs' Feet, per pound	.5
Pork Chops	12 1-2	Tripe, per pound	.5
Pork Roast	12 1-2	Hams, home cured	.12 1-2
VEAL.		Home Cured Bacon	.17 1-2
Veal Cutlets	.16	Home Rendered Lard	.12 1-2
Veal Chops	.16	Leaf Lard	.12 1-2
Veal Roast Leg	.15	And everything else cheap in proportion.	

Prices subject to market change without notice

Santa Fe Meat & Live Stock Co.

Next to Cartwright-Davis Co.

CHARGES AGAINST
COUNTY BOARD.

(Continued From Page One.)

June 7, 1907, or not to exceed \$80 for interest to date, or a total of \$2,139.09, upon which said judgment as aforesaid, Max. Frost has been paid since June 7th, 1907, a grand total of \$2,471.33, or approximately \$31.24 more than said Frost was entitled to under said judgment in case No. 5060.

Specification No. 3.—The said board of county commissioners on June 12, 1907, authorized the drawing of warrant No. 11057 in favor of Ishmael Sparks, chairman of said board for \$300, which was paid said Sparks, prior to his departure for New York to settle the bonded indebtedness of Santa Fe county and which payment was made to Sparks prior to his rendering any of the services for which the warrant was drawn. This being clearly without proper legal authority and in direct violation of positive law on the subject.

While the foregoing specifications do not embrace all the examples that might be brought forth in the foregoing charge, they are sufficient to show the general character of the administration of the present board of county commissioners of Santa Fe county. Other charges can be made and specifications cited in support of the same, but the foregoing specifications, which are serious in their nature, are sufficient to show the gross maladministration of the said board of county commissioners, and the same are submitted to you for your full information upon the subjects dealt with and for such action on your part as may be deemed necessary for the best interests of Santa Fe county.

Respectfully submitted.

A. STAAB,
EUGENE A. FISKE,
H. B. CARTWRIGHT,
FRANK OWEN,
N. B. LAUGHLIN,
Executive committee of the Commercial Club of Santa Fe County.

OFFICIAL MATTERS

Notary Public Appointed.
Governor Curry today appointed Benjamin J. Norby of Melrose, as a notary public of Roosevelt county.

GOVERNOR CAN NOT
GO TO SILVER CITY

Owing to important business which must be attended to before his departure for Washington, Governor Curry has been obliged to postpone his proposed trip to Silver City until after his return from the national capital. He will now leave for Washington on the date originally planned.

OAKLAND, CALIFORNIA,
HAS \$80,000 FIRE.

Oakland, Calif., Jan. 16.—A first last night destroyed the Pacific Press building, corner of Twelfth and Castro streets. The loss is estimated at \$80,000. During the fire W. B. Colidan, a mining broker aged 61 years, dropped dead from excitement.

THERMOMETER REGISTERS
SIX BELOW AT ST. PAUL.

St. Paul, Minn., Jan. 16.—The thermometer registered six degrees below zero here this morning. This is the coldest day of the winter.

KENTUCKY SENATORIAL
DEADLOCK UNBROKEN.

Frankfort, Ky., Jan. 16.—The ballot for U. S. Senator by the legislature in joint session today stood Beckham 68, Bradley 64, scattering 4; absent 3.

The New Mexican Printing Company has prepared civil and criminal dockets especially for the use of justices of the peace. They are especially ruled, with printed headings, in either Spanish or English, made of good record paper, strongly and durably bound with leather back and covers and canvas sides, have full index in front and the fees of justices of the peace and constables printed in full on the first page. The pages are 10 1/2x6 inches. These books are made up in civil and criminal dockets, separate of 32 pages each, or with both civil and criminal bound in one book, 80 pages civil and 320 pages criminal. To introduce them they are offered at the following prices:

Civil or criminal \$2.75
Combined civil and criminal \$4.00

For 45 cents additional for a single docket, or 55 cents additional for a combination docket, they will be sent by mail or prepaid express. Cash in full must accompany order. State plainly whether English or Spanish printed heading is wanted.

The New Mexican Printing Company has the largest most modern and best arranged book bindery in the Southwest. The best kind of work only turned out. Prices very low and satisfaction guaranteed. If you have books to bind, whether the largest ledger or journal, or magazines and pamphlets or need any other binding call for figures, samples and prices of the New Mexican Printing Company. The company is anxious to serve you and will give you satisfactory rates.

Legal blanks—both English and Spanish—for sale by the New Mexican Printing Company.

WANTED.—Typewriting or position of any kind by young man of fair education and good habits. Address "J. B." care of New Mexican.

DR. DIAZ SANITARIUM

Equipped for the treatment of medical, surgical and obstetrical cases. Approved methods of diagnosis and therapy. Rooms steam heated and electric lighted. No patient with contagious disease accepted. Open to all licensed practitioners.

Dr. J. M. Diaz, Pres. J. A. Rolis, Secy.



YOUR ORDER

should be given to us if you want it filled quickly and satisfactorily. We have on hand a fine lot of

CHOICE LUMBER

Chestnut, Cypress, Oak, Sycamore, Pine Homelock, etc.

C. W. Dudrow.