

9-19-1907

Santa Fe New Mexican, 09-19-1907

New Mexican Printing Company

Follow this and additional works at: https://digitalrepository.unm.edu/sfnm_news

Recommended Citation

New Mexican Printing Company. "Santa Fe New Mexican, 09-19-1907." (1907). https://digitalrepository.unm.edu/sfnm_news/6733

This Newspaper is brought to you for free and open access by the New Mexico Historical Newspapers at UNM Digital Repository. It has been accepted for inclusion in Santa Fe New Mexican, 1883-1913 by an authorized administrator of UNM Digital Repository. For more information, please contact disc@unm.edu.

TAX ASSESSMENT BERNALILLO COUNTY

**Total Valuation Still
Largest in Ter-
ritory**

COMPARED WITH LAST YEAR

**Corporations Escape With
Very Low Taxes Especially
American Lumber Co.**

Bernalillo County still has the distinction of being the richest county in New Mexico from the standpoint of assessed valuation of taxable property. However, the net increase for 1907 over the previous year is not as large as in some of the other counties of the territory. Exemptions have been allowed aggregating \$326,765.

The tax returns of Bernalillo County for the present year show a total valuation of \$4,010,639, including a net gain of \$130,234 as compared with the assessment in 1906. The largest single item of increase is in city and town lots which represent over half of the total valuation and in which the advance is \$232,538.

Where the corporations of Bernalillo County assessed as they should be the amount of taxes collectable would be much greater than at the present time. A glance at the comparative abstract of the tax rolls of 1906 and 1907 reveals the fact that under the classification of saw mills there is but an increase of \$400. Saw mills last year represented a total assessed value of \$11,100 and this year the assessment is \$11,500. A somewhat larger gain is shown in the valuation of lumber which in 1906 was assessed at \$37,400 while in 1907 it is \$41,400 or an increase of \$4,000.

Granting that the American Lumber Company which is located in Albuquerque pays the entire amount in both of the classified items referred to, it will be noticed the assessment is a little over \$50,000. This plant is considered to be one of the most extensive of its kind in the country and has several hundred employees on its pay rolls. Reference to the New Mexico blue book of 1905 will show that this company was incorporated on December 20, 1902, with a total authorized capitalization of \$8,000,000.

As a matter of fact the total assessment of the American Lumber Company as extended on the tax rolls this year is \$50,000. This is made up of the following items: Value of land \$2,000; value of improvements, \$6,000; Value of horses, \$800, value of all other property, \$42,200. The amount of taxes actually collectable on this assessment is \$2,250. The comparison is obvious.

An increase of \$10,000 is indicated in the assessment of water plants. The Albuquerque Water Supply Company which was raised this amount by the board of county commissioners appealed from this action to the Territorial Board of Equalization which was in session last week in Santa Fe. The appeal was rejected and the county board sustained. The increase will therefore be allowed to stand undisturbed.

The assessment on electric light plants and gas plants is respectively \$27,000 and \$12,000. There is an increase in the former of \$4,000 and in the latter of \$1,000. The Albuquerque Electric Light Company was incorporated on March 10, 1881, with a capital stock of \$100,000 and the Albuquerque Gas Company was incorporated on December 31, 1880, with a capital stock of \$100,000, while the Albuquerque Gas, Electric Light and Power Company was organized on November 17, 1902, with a capital stock of \$200,000.

There is a gain of \$2,678 in the assessment of the street railway system of Albuquerque, which is down on the tax rolls this year for \$22,800, which, with other property, brings the total assessment to \$26,800. The Albuquerque Electric Railroad Company was incorporated on March 10, 1881, with a capital stock of \$90,000, while the Albuquerque Traction Company which supercedes it, was incorporated on August 25, 1903, with a capital stock of \$250,000.

While the increases are shown in a large number of the various classifications there are also many decreases discernable. The biggest loss in any individual item is on bank stock in which a decline is observable of \$118,405. Decreases are noticeable in agricultural lands and grazing lands taken together, amounting to \$32,010.

Gold and silver plate were assessed last year at \$1,104 while this year this classification is blank. There has been a decided falling off also in jewelry which last year was listed at \$7,470 while this year it is \$2,045.

The regular county levy this year in Bernalillo county is 24 mills and the regular city levy, 18 mills. There

is a special city levy of 13 mills for the support of the public schools and to pay interest on school bonds. The special school levies in the various county school districts range from three to five mills. There is also a special county levy of two mills for the county flood fund together with the specials for cattle indemnity and sheep sanitary funds.

The following is a comparative abstract of property subject to taxation in Bernalillo County for the years 1906 and 1907:

Agricultural lands, 1906, \$233,260; 1907, \$221,415, a decrease of \$11,845.
Grazing lands, 1906, \$180,248; 1907, \$169,083, a decrease of \$20,165.
City or town lots, 1906, \$2,176,404; 1907, \$2,408,942, an increase of \$232,538.

Timber lands, 1906, none; 1907, \$260, an increase of \$260.

Mineral lands other than coal, 1906, \$850; 1907, \$850.

Electric light plants, 1906, \$23,000; 1907, \$27,000, an increase of \$4,000.

Water plants, 1906, \$38,000; 1907, \$48,000, an increase of \$10,000.

Railroads, 1906, \$342,330; 1907, \$341,754, a decrease of \$576.

Flouring mills, 1906, \$6,400; 1907, \$2,250, a decrease of \$4,150.

Saw mills, 1906, \$11,100; 1907, \$11,500, an increase of \$400.

Horses, 1906, \$27,320; 1907, \$34,830, an increase of \$7,510.

Mules, 1906, \$2,635; 1907, \$1,405, a decrease of \$1,230.

Cattle, 1906, \$12,270; 1907, \$20,805, an increase of \$8,535.

Sheep, 1906, \$40,225; 1907, \$67,976, an increase of \$27,751.

Goats, 1906, \$2,375; 1907, \$3,536, an increase of \$1,161.

Swine, 1906, \$900; 1907, \$657, a decrease of \$243.

Burros, 1906, \$415; 1907, \$657, an increase of \$242.

Vehicles of all kinds, 1906, \$21,455; 1907, \$22,758, an increase of \$1,303.

Sewing machines, 1906, \$2,270; 1907, \$1,694, a decrease of \$576.

Saddles and harness, 1906, \$4,365; 1907, \$3,801, a decrease of \$564.

Merchandise, 1906, \$314,185; 1907, \$322,305, an increase of \$8,120.

Watches and clocks, 1906, \$2,525; 1907, \$1,062, a decrease of \$1,463.

Farming implements, 1906, \$3,200; 1907, \$2,406, a decrease of \$794.

Saloon and office fixtures, 1906, \$18,530; 1907, \$24,046, an increase of \$5,516.

Money, 1906, \$2,700; 1907, \$5,505, an increase of \$2,805.

Law and medical books, 1906, \$8,475; 1907, \$9,985, an increase of \$1,510.

Jewelry, 1906, \$7,470; 1907, \$2,045, a decrease of \$5,425.

Gold and silver plate, 1906, \$1,104; 1907, none, a decrease of \$1,104.

Musical instruments, 1906, \$4,325; 1907, \$4,290, a decrease of \$35.

Household goods, 1906, \$84,330; 1907, \$80,175, a decrease of \$4,155.

Shares of stocks in banks, 1906, \$321,000; 1907, \$212,595, a decrease of \$108,405.

Lumber, number of feet, 1906, \$37,400; 1907, \$41,400, an increase of \$4,000.

Mechanics' tools, 1906, \$1,275; 1907, \$923, a decrease of \$352.

Scouring mills, 1906, \$5,250; 1907, \$5,250.

Street railways, 1906, \$21,000; 1907, \$22,800, an increase of \$2,678.

Gas plants, 1906, \$11,000; 1907, \$12,000, an increase of \$1,000.

Printing plants, 1906, \$13,800; 1907, \$15,050, an increase of \$1,250.

Other property, 1906, \$10,202; 1907, \$12,880, an increase of \$2,678.

Total valuation, 1906, \$4,010,639; 1907, \$4,157,648. Exemptions, 1906, \$309,999; 1907, \$326,765. Subject to taxation, 1906, \$3,700,649; 1907, \$3,830,883. Net gain, \$130,234.

DEATH SENTENCE FOR TWENTY-TWO

**Russia Deals Firmly
With Men Guilty
of Treason**

PARTICIPATED IN REVOLT

**Wrested Control of Baltic
Provinces From Czar
in 1905.**

Riga, Russia, Sept. 19.—Twenty-two out of fifty-eight men tried by court martial here on a charge of participation in the revolt in the Baltic provinces in 1905 by which the control of this section was wrested from the Russian government for several months, have been condemned to death. Several hundred men have heretofore been executed for their connection with this uprising.

Subscribe for the Daily New Mexican and get the news.

JAPAN MAY ANNEX KOREA

**Unfriendliness To-
wards Mikado
the Cause**

INSURGENTS MENACE SEOUL

**Reported Large Bands are
Gathering About Capi-
tal for Attack.**

Tokio, Sept. 19.—The possibility that Japan may have to annex Korea seems to again have arisen. Marquis Ito is quoted as having said it may be necessary to alter Japan's policy, owing to the present situation and if the Korean people persist in their attitude of unfriendliness, it will be the "last day for them." Tokio papers are receiving reports that the insurgents are gathering around Seoul to attack it. Roving parties are killing Japanese officials and civilians. These are fleeing to the mountains upon the approach of Japanese troops.

MARRIAGE OF AN ESTIMABLE COUPLE

**Miss Teresita Martinez of This City
Is Claimed as Bride By William
Hesch of Palma.**

Following the marriage yesterday of Miss Teresita Martinez of this city and William Hesch of Palma, which was solemnized at 8 o'clock in the morning at Guadalupe church by the rector, Rev. Father Adrian Rubeyrolle, a reception was held at the home of the bride's parents on Agua Fria street and the festivities were brought to a close last night by a dance at the opera house.

The bride and groom are both well and favorably known in this city and vicinity and their friends are limited only to their acquaintances. Mrs. Hesch, nee Martinez, is a daughter of Mr. and Mrs. Cleto Martinez, who are old and respected residents of Santa Fe. Mr. Hesch who claimed her as his bride yesterday is a son of John Hesch, a prominent sheep man of Torrance county, and also postmaster at Palma. He will engage in the mercantile business at Palma, where he will take his bride in a few days.

A large number of relatives and friends attended the marriage ceremony and the incident festivities, bringing with them numerous tokens of their esteem in the shape of wedding presents. Miss Rosa Alarid and Benjamin Alarid were respectively bridesmaid and best man.

John Hesch, the groom's father, who was here for the wedding, left this morning for San Ildefonso, where he visit relatives for a few days.

PIONEER MAKES REMARKABLE TRIP

**Rugged Old Man Drives Ox Team
From Oregon to New York in 62
Days Via Oregon Trail.**

New York, Sept. 19.—A team of oxen drawing a prairie schooner, the driver of which was a rugged old man, wearing western garb, attracted great crowds on Broadway yesterday. The driver was Ezra Meeker, a pioneer of the Oregon trail who had returned over the trail he followed to the West half a century ago. Meeker's trip ended at the Battery. He had come from Puyallup, Washington, in 62 days. His object in making the journey is to persuade the government to build a national highway from East to West.

FAMOUS DIETZ DAM DISPUTE IS SETTLED

Warring Lumber Factions in Wisconsin Reach Agreement—Defendant Made Bold Stand.

Winter, Wis., Sept. 19.—The famous Dietz dam dispute has been settled. It is stated an agreement has been made between the contending parties and millions of feet of logs held up by the intrepid defendant of the Cameron dam on Thernapple River, near here, will be moved at once. Trouble arose over a dispute as to the title to a tract of land covering the Cameron dam. Three sheriffs failed to capture Dietz who gained national fame for his bold act in defying the authorities.

ROSWELL DEFEATS WATER WORKS BONDS.

Roswell, N. M., Sept. 19.—The proposition to vote \$125,000 in bonds for a municipal system of waterworks for this city, was defeated by a vote of 233 to 114.

OPERATING UNDER ASSUMED NAME

**Standard Oil Com-
pany Evades Tex-
as Laws**

EVIDENCE PROVES THIS

**Startling Disclosures Made
in Suit on Hearing in
New York.**

New York, Sept. 19.—Evidence was adduced today at the hearing of the federal suit against the Standard Oil Company of New Jersey in which Frank B. Kellogg is conducting the government's actions which tends to prove the Standard Oil company is operating in Texas under the name of the Corsicana Refining Company. Texas anti-trust laws forbid the Standard from doing business within the borders of that state. Kellogg developed from Wesley Tilford, treasurer of the Standard Oil Company, that H. C. Folger and C. M. Payne, who, Kellogg says, are owners of the Corsicana Company, are officials of the Standard Oil Company.

Wesley H. Tilford, treasurer of the Standard Oil Company, was questioned today by Mr. Kellogg, who is conducting the federal suit against the oil combine in an effort to glean further facts and figures concerning the development of the Standard Oil trust and its subsequent liquidation into the present Standard Oil Company of New Jersey.

Tilford was shown a copy of an agreement dated 1882, giving a list of the companies that entered into the trust.

"It appears that the Chess Charley Company signed that agreement; have you thought about that since I spoke to you last night?" asked Kellogg.

"I have not," replied Tilford, who yesterday testified that he had been a member of the Chess Charley Company of Louisville before he became identified with the Standard.

Tilford testified that between 1892 and 1899 the trustees received dividends on unliquidated stocks of subsidiary companies and distributed the money to the holders of trust certificates and holders of liquidating assignments. The trustees did not vote this subsidiary stock as they had done before the company underwent liquidation. Prior to 1892 he said, the trustees voted the stock and elected the directors of all the subsidiary companies.

HOLD-UPS BUSY AT MADRID CAMP

**Two Attempts Made to Rob Home of
Fred Alarid—Thugs Put to Flight
With Winchester.**

Special to the New Mexican.

Madrid, N. M., Sept. 19.—Much excitement prevails in this camp as a result of two attempts made to rob the home of Fred Alarid on Tuesday night. About 8:30 o'clock in the evening two men effected an entrance to the Alarid home by climbing through a window. Alarid heard them and grabbing a gun, he managed to stand off the intruders until help arrived.

However, after he had retired for the night, another attempt at 12:30 o'clock was made to enter the house. This time Alarid managed to put the would-be robbers to flight and he succeeded in getting several shots at them with a Winchester.

Since the occurrence every home in the camp has been supplied with a gun and a warm reception awaits the next attempt at robbery.

STOLEN HORSES ARE RECOVERED

**Five Animals Alleged to Have Been
Taken From Navajo Indians,
Found Near Cerrillos.**

Word was received here yesterday that five of the horses alleged to have been stolen recently from Navajo Indians at Cabezon had been recovered near Los Cerrillos and it is expected that the three others claimed to have been driven off at the same time will be located. So far as known the alleged thief has eluded capture. Lieutenant John W. Collier of the Territorial Mounted Police assisted the Indians in recovering the animals. The Indians took up the trail and followed it to this city where they reported the theft to the Territorial Mounted Police and Lieutenant Collier accompanied them from here.

Butchers' shipping certificates, such as are required by law, printed in blank form by the New Mexican Printing Company.

WONDERFUL GROWTH OF MESILLA VALLEY

**Numa Raymond Reports Progress of
Southern New Mexico As-
tonishing.**

Numa Raymond, the well known capitalist and a large property owner in the Mesilla Valley, returned yesterday from a visit to Las Cruces, the prosperous county seat of Dona Ana county. Mr. Raymond was a resident of the fertile Mesilla Valley for forty years and is thoroughly acquainted with conditions there. He is very agreeably astonished at the great and satisfactory progress which Las Cruces and the Mesilla Valley in New Mexico from Leasburg on the north to the Texas line on the south are making. Agricultural lands have rapidly advanced in value and when under irrigation and in alfalfa or grain demand from \$100 per acre and upwards. Orchards and vegetable lands are rated much higher. Many land sales have been made in the past two years and a very good class of well-to-do people have been the purchasers.

The town of Las Cruces is growing rapidly and is becoming modernized to a very appreciable degree. The two banks in the town, Bowman's and the First National, have large deposits. Much building is going on and the erection of a new, handsome and large commercial hotel in the Commercial block will soon commence. This block has been owned by Mr. Raymond for many years and is in the heart of the business section of the town. Negotiations for its purchase by a corporation recently organized are now progressing and it is believed will be satisfactory and quickly adjusted.

The Las Cruces public schools are crowded to overflowing and more public school accommodations are absolutely needed. This is also the case with the College of Agriculture and Mechanic Arts where additional dormitories are absolutely necessary and where many applicants for admission had to be turned away this year because of a lack of adequate accommodations. The fruit crop this season in the Mesilla valley was a failure on account of late frosts, but cereals and alfalfa yielded heavy returns as there was an ample supply of water for irrigation on account of the high stage of water in the Rio Grande. A diversion dam at Leasburg now being constructed by the U. S. Reclamation service could not be utilized this year, but this will be completed in time next year and will insure an ample supply of water for irrigation purposes for the thousands of fertile acres in the valley and this means great prosperity and much business for the people.

In Mr. Raymond's opinion should the construction of the Elephant Butte reservoir at Angle, seventy-five miles north of the valley, be delayed for two years longer, then and by that time Las Cruces will have secured such a start and will have established itself so firmly that it will be the largest town between Albuquerque and El Paso, and one of the best business towns in the entire Southwest.

YOUNG MEN'S ASSOCIA- TION RE-ORGANIZED

**Old Officers Are All Re-Elected With
Exception of Secretary, Which
Place Is Filled By J. B. Sloan.**

The Young Men's Association of this city, has been reorganized for the ensuing fall and winter months. All of the old officers have been re-elected with the exception of C. V. White, who removed recently to California. The officers are: President, Henry F. Stephens; vice president, Charles E. Linney; secretary, J. Bert Sloan; treasurer, A. H. Brodhead.

Preparations are being made among the members for an athletic entertainment to be held some time during the winter, probably early in January. Tuesday evening when the association was reorganized it was decided to purchase the gymnasium apparatus which had been loaned by Mrs. T. B. Catron who generously agreed to sell it complete at \$50, which represents a large reduction from the original cost price.

The indications are the membership of the Young Men's Association will be much larger this year than it was last, and an effort will be made later to have it embodied in a local branch of the Young Men's Christian Association.

PROHIBITION CARRIES IN OKLAHOMA.

Oklahoma City, Okla., Sept. 19.—The returns from yesterday's election that arrived here today and last night continue to be of the same tenor, that the constitution has been adopted by a vote of 3 to 1; that prohibition has carried by at least 30,000, and that the whole democratic state ticket, headed by Charles N. Haskell, of Muskogee, has been elected by a majority of more than 20,000. In the congressional elections the democrats seem to have chosen four of the five representatives, according to the latest returns.

BURSUM VERSUS THE TERRITORY

**Hearing On Bill of
Exceptions and Re-
free's Report
BEFORE JUDGE PARKER**

**Full and Thorough Investiga-
tion of Convicts Earn-
ings Fund.**

A hearing will be held at Silver City tomorrow afternoon before Associate Justice Frank W. Parker, presiding judge of the Third judicial district, in the case of Holm O. Bursum versus the territory of New Mexico, which was filed in the district court of Socorro county. Considerable interest attaches in the outcome of this case which was instituted by Mr. Bursum for the purpose of securing a judicial settlement of his financial accounts containing the convicts earnings' fund while superintendent of the territorial penitentiary.

Mr. Bursum's enforced resignation from the management of the territorial prison and the subsequent claim of an alleged shortage in the penitentiary accounts purporting to be something like \$12,000 are still fresh in the minds of the reading public of New Mexico. This alleged shortage was based upon an expert report made by one Francis M. McMahon, secretary of the Colorado Title and Trust Company, of Colorado Springs, an accountant hired to expert the books by ex-Governor Hagerman. It has been charged and with foundation that the alleged discrepancy in Mr. Bursum's accounts while at the head of the institution was simply the result of political conspiracy to ruin the former superintendent's reputation and to prevent his re-election as chairman of the Territorial Republican committee.

Mr. Bursum has emphatically denied that there was anything wrong with the finances of the penitentiary during the time it was under his administration. He asked permission to be present in person or through a representative at the investigation of the books and accounts of the convicts' earnings' fund, but this was denied, by ex-Governor Herbert J. Hagerman who had ordered the ex-parte and secret investigation. Finally under protest he paid into the territorial treasury part of the money alleged to be due and began the present legal proceedings in the district court of Socorro county to demand a judicial accounting and a thorough investigation in open court.

No Shortage Whatever Exists.

Judge Parker appointed Traveling Auditor Charles V. Safford as referee in the case and Mr. Safford and his assistant spent about two months in going over the books and accounts. Mr. Safford's report as referee which was filed in court some time ago was an exhaustive one, involving every financial transaction concerning the convicts earnings' fund during the seven years in which Mr. Bursum was superintendent of the prison. Instead of being short in his accounts as alleged, in the McMahon report the findings of the referee charged by the court fully vindicated Mr. Bursum of the stigma of embezzlement. According to the referee's report many glaring discrepancies were discovered in the so-called report of McMahon.

The territory interposed a bill of exceptions to the report of Referee Safford which will come up for hearing tomorrow in Silver City together with the report of Mr. Safford. Attorney General Albert B. Fall, Traveling Auditor Safford, Mr. Bursum, E. P. Holcombe, a special agent of the general land office, who has been in the city the past two months, left this afternoon for Silver City to be present at the hearing.

Attorney General Fall said today prior to his departure he had served notice in writing upon Ormsby McHarg, special assistant to the attorney general of the United States, who has charge of the present federal land investigations in New Mexico, that the hearing in the Bursum case would take place tomorrow, and he had invited Mr. McHarg to participate in the hearing. Mr. McHarg, it will be remembered, entered his appearance in this suit in the bill of exceptions filed by the Territory, but later withdrew after satisfying himself it was a matter for the Territory to cope with and in which the United States government had no interest.

No Star Chamber Proceedings.
Judge Fall declared there would be no star chamber proceedings in connection with the case. "This hearing will be in open court," he said, "The public is entitled to it and I want it

(Continued on Page Eight)

SANTA FE NEW MEXICAN.

THE NEW MEXICAN PRINTING COMPANY, PUBLISHERS.
MAX. FROST, Editor. JOHN K. STAUFFER, Secy-Treas.
EDWIN F. COARD, City Editor.

Entered as Second Class Matter at the Santa Fe Postoffice

RATES OF SUBSCRIPTION.	
Daily, per week, by carrier.....	\$.20
Daily, per month, by carrier.....	.75
Daily, per month, by mail.....	.65
Daily, per year, by mail.....	7.00
Daily, six months, by mail.....	3.75
Weekly, per year.....	2.00
Weekly, six months.....	1.00
Weekly, per quarter.....	.75

OFFICIAL PAPER OF SANTA FE COUNTY.

The New Mexican is the oldest newspaper in New Mexico. It is sent to every postoffice in the Territory, and has a large and growing circulation among the intelligent and progressive people of the Southwest.



NEW MEXICO WILL OFFSET OKLAHOMA.

Congress made no mistake by passing an enabling act for Oklahoma and Indian Territory even though the proposed new state showed its ingratitude and lack of wisdom by going Democratic at its first state election. Still, this was to have been expected from the character of the immigration that went into the two territories of late years. Despite the fact, that a constitution, in part Un-American in its ideas, was adopted and two Democratic Senators will likely be sent to Washington, yet, one of the glories of the Roosevelt administration is that Oklahoma was admitted under it as a state. Nor is Oklahoma hopelessly Democratic. The second sober sense of the people is about to reassert itself as it can be gathered from the fact that three Republican Congressmen out of five were elected. It is evident, that the Democratic victory was not caused by a prevalence of Democratic principles but by a combination of local conditions and bitter personalities that harmed the Republican party.

If it was no mistake to admit Oklahoma and Indian Territory as a state, it certainly will be still greater wisdom to admit New Mexico as soon as possible to counterbalance not only the Democratic but also the socialistic and Populistic tendencies of Oklahoma. Though inferior in wealth and population, New Mexico still has sufficient people and great enough wealth to entitle it to statehood and what is better, its ideals are thoroughly sane and Republican. Its admission would readjust the balance of power in the Southwest which has been disturbed by the result of the election held this week in Oklahoma. Eventually, New Mexico will make a populous and wealthier state than Oklahoma, for in the latter the public lands have been all taken up and a limitation has thus been set upon further phenomenal growth while in New Mexico the rush for the public lands, similar to that which began in Oklahoma several years ago, has just started and there are still 50,000,000 acres of public land left which are being now taken up at the rate of three million acres a year, meaning a steady gain of 50,000 farming population each year and a corresponding increase in wealth.

These reasons are sure to have great weight with a Republican President and a Republican Congress; in fact, they appeal even to fair-minded Democrats and will assure New Mexico statehood if it gives evidence of being worthy of it. That there is still some doubt on this point, can be gathered from the comments of eastern newspapers and the best and surest way to dispel these erroneous or assumed ideas is to adopt a constitution which will compare so favorably with that of Oklahoma, that the question of fitness for self-government will be laid to rest forever. The majority of states were admitted with constitution in hand, a constitution not formed by a duly authorized convention by Congress, but by conventions irregularly called and held, but legalized and approved by the sanction of the people, who realized that the right of petition, is an inherent right even older than the Federal Constitution. New Mexico would have the advantage in this respect for its constitutional convention composed of delegates elected last November would at least have the sanction of Federal statute although strict constructionists maintain that it would be held without Federal authority. Its members were elected under an apportionment approved by Federal statute and at a time and in accordance with methods prescribed by the same laws. But even if this were not the case, a constitution prepared by this convention and approved at a special election by the people, or by the legislature in special session would have as much and more weight than did the constitutions of many other commonwealths similarly adopted before Congress had made provision for admitting the commonwealth into statehood. A fundamental law carefully prepared and conscientiously adopted by a representative assembly of men fairly elected, would be a passport to statehood that the President and Congress would not likely ignore and which they certainly would not disapprove. All opposition to the holding of a constitutional convention, is therefore scant, based on legal quibbles which would have kept the Thirteen Colonies under King George because the Declaration

of Independence had not been authorized by Parliament. This hypocritical opposition to a constitutional convention is an attitude which would keep New Mexico from statehood for two more decades if it had its way, but the New Mexican believes that it will not prevail and that with Governor Curry in favor of statehood and with the sentiment of the people almost unanimously in back of him, the few political dogs in the manger will not prevail with their ideas.

PROSPECTS FOR STATEHOOD BY NO MEANS DARK.

The patriotic and decent newspapers of the Sunshine Territory are arranging themselves on the side of prompt and energetic action to secure statehood for New Mexico and to carry out the plan suggested by Delegate Andrews towards that end, some of the points therein being the holding of a constitutional convention, the framing of a constitution and submitting the document to Congress and to obtain the President's active aid in support of the project. Says the Socorro Chieftain:

"In an interview published in the Santa Fe New Mexican, Hon. W. H. Andrews advocates the immediate beginning of a strenuous campaign in favor of separate statehood for New Mexico and the calling of an early constitutional convention for the drafting of a constitution to be submitted to Congress at its next session. Mr. Andrews' views on this subject are perfectly logical and they will be favored by a great majority of the people of this territory. New Mexico voted in favor of joint statehood, to be sure, but she did not swallow the pill because she liked it. She merely made the best of existing conditions and yielded to the wishes of the president and Congress. But conditions are now changed. The president has already announced that he will not urge joint statehood further, and there are excellent reasons to believe that if the subject is properly presented by the proper persons he will promptly go further and use his great influence in favor of separate statehood. This is why Mr. Andrews' views on the subject are logical. They will be favored by the great majority of the people of the territory because that majority is logical also. The prospect for separate statehood for New Mexico is by no means dark."

NEW MEXICO'S IMMENSE COAL SUPPLY.

Reliable estimates have it that the coal production for New Mexico during the fiscal year ending June 30, 1907, exceeded by a quarter of a million the two million ton mark, while during the present fiscal year the production will reach three million tons, in fact, would surpass it, if enough miners could be had to keep the mines running to their fullest capacity. This coal production exceeds in value the combined production of the Territory; it is worth more than all of the wool sold this year from the backs of New Mexico sheep, or of all the cattle shipped out of the Territory during the same period, although the cattle shipments were greater than in any previous year. Yet, it would take 3,000 years to exhaust the coal now in sight on the 1,500,000 acres of explored coal fields in the Territory, if the rate of production of three million tons a year is maintained. New Mexico is a great storehouse of fuel and its production will continue to add wealth, encourage manufacturers and railroad building for many years to come.

President Roosevelt has rather a funny idea of summer vacation. During the one he has just enjoyed at Sagamore Hill he has written six speeches for delivery during his western tour and also his message to the 60th Congress. Most people would think that a great deal of work but the president seems to think it simply recreation and healthful rest.

Facts which have been adduced during the past few months show conclusively that the board of penitentiary commissioners is not as efficient a body as it ought to be considering the important duties incumbent upon its members. A few changes in the membership would be of public benefit and very timely.

The striking telegraph operators are in need of funds. The simplest and best way to raise these would be for the telegraphers to get back to honest work.

THE WORK OF THE SCHOOL OF MINES.

The School of Mines at Socorro will do better work than ever in its history during the present scholastic year. It is growing in the right direction, and fulfilling the objects for which it was created. Concerning this condition the Socorro Chieftain rather proudly remarks:

"One of the most satisfactory features of the enrollment at the School of Mines at the opening of the institution Monday morning was in the names of an unusually large number of former students. It has been difficult in many cases heretofore to keep young men in the School of Mines long enough for them to complete a technical course, for the reason that as soon as they have learned assaying for instance, their services have been in demand and temptations have been offered them, in way of salary, that they could not resist. It is encouraging, therefore, to see an unusually large number of former students return to their work at the institution this year."

FAIRNESS IS ALL THAT IS ASKED.

All the people of New Mexico ask of the federal special agents, and special assistants to the attorney general of the United States in their investigation of alleged frauds in the disposition of public lands in the territory, is fairness, justice and decency. Unfortunately heretofore too much attention has been paid to the downright and absurd fabrications of sycophants, backbiters and false affidavit men. This has not only been a detriment to the territory but also has served to hamper the course of justice. The people did not like such a course and would not stand for it, and the sentiment of the best citizenship of the Sunshine Territory did not approve it. Of course the bought and paid for yellow sheets, lying correspondents and fake reformers tried to use this bad situation for their own uses and benefit and succeeded in some instances but a change for the better has arrived, and this is gratifying and well.

Even though New Mexico has no fruit crop worth while, speaking about this year, it is estimated that the crop values of this year of Our Lord in this Territory, will exceed \$20,000,000 and may come near the \$30,000,000 mark. Add to this the income from sheep, cattle and goat breeding and the gross income from the sale of 20,000,000 pounds of wool and it will be recognized that the other industries of the Territory will have to grow quite a bit before they will surpass the farming and closely allied stock industry as wealth producers.

"It is costing the government a lot of money to lock the barn doors in this neighborhood after all the horses have been stolen. It is suggested that the general land office could have best protected the people by having a few men of sense around about eight years ago."—Industrial Advertiser. Let the Advertiser give some facts about the "horses that have been stolen" in land matters during the past eight years. There has been a great deal of smoke, but precious little fire.

It looks promising for the construction of the Albuquerque Eastern Railway from Moriarty to the Duke City and for the extension of the line from Frost to Hagan to the coal fields owned by the New Mexico Fuel and Iron Company. The New Mexican sincerely hopes that this promise will end in speedy fruition. The building of the road will be a great thing for central New Mexico and may cheapen the price of coal to consumers in Santa Fe and Albuquerque.

The largest number of indictments of any session of the territorial grand jury in Eddy County, was returned last week at Carlsbad. This shows that the appointment by Governor Curry of Louis O. Fuller to be district attorney for the Fifth Judicial District was right, proper, wise and best for the public service.

According to official figures the profits of the Standard Oil Company aggregated \$490,315,934 during the past seven years. Talk about luck. The shareholders of that big corporation certainly enjoyed it to the fullest extent for seven long years. They should not kick if their profits should now be reduced.

In Denver the people are kicking vehemently at the extortion of the coal trust and at the despotic overcharges of the water supply company, and non-attention of the wants and rights of the customers of the company. Ditto in Santa Fe.

Evidently time for the reestablishment of the good name and fair reputation of the people of New Mexico is arriving. The knockers, the slanderers, the libelers and the false affidavit men must take back seats. It is high time.

It is said Chicagoans spent 300,000 a year for shining their shoes and boots. Considering the population of the Windy City and the big feet of the men and women there, this is nothing extravagant.

The Republicans of Oklahoma did better than was expected in Tuesday's election in the new state. They secured three members of Congress out of five. Small favors thankfully received, larger ones in proportion.

PROFESSIONAL CARDS

ATTORNEYS-AT-LAW.
MAX. FROST,
Attorney at Law.
Santa Fe New Mexico.

G. W. PRICHARD,
Attorney and Counselor at Law.
Practices in all the District Courts and gives special attention to cases before the Territorial Supreme Court.
Office: Laughlin Bldg., Santa Fe, N. M.

BENJAMIN M. READ
Attorney at Law.
Santa Fe, New Mexico.
Office: Sena Block, Palace Avenue.

WILLIAM H. H. LLEWELLYN,
Attorney at Law.
Las Cruces, New Mexico.
United States District Attorney.

A. W. POLLARD,
Attorney at Law.
District Attorney, Luna County.
Deming New Mexico.

EDWARD C. WADE,
Attorney at Law.
Practices in the Supreme and District Courts of the Territory, in the Probate Courts and before the U. S. Surveyor General and U. S. Land Offices.
Las Cruces, N. M.

E. C. ABBOTT,
Attorney at Law.
Practices in the District and Supreme Courts. Prompt and careful attention given to all business.
Santa Fe New Mexico.

A. B. RENEHAN,
Practices in the Supreme and District Courts. Mining and Land Law a Specialty. Office in Catron Block, Santa Fe, N. M.

CHAS. F. EASLEY,
(Late Surveyor General.)
Attorney at Law.
Santa Fe New Mexico.
Land and Mining Business a Specialty.

GEORGE E. BARBER,
Attorney and Counselor at Law.
Lincoln, Lincoln County, New Mexico.
Practices in the District Court and Supreme Courts of the Territory.
Prompt Attention Given to All Business.

FRANK W. CLANCY,
Attorney at Law.
District Attorney for Second Judicial District.

Practices in the District Court and the Supreme Court of the Territory; also before the United States Supreme Court in Washington.
Albuquerque, New Mexico.

H. B. HOLT,
Attorney at Law.
Las Cruces, New Mexico.
Practices in the District Courts as well as before the Supreme Court of the Territory.

MARK B. THOMPSON
Attorney-at-Law
District Attorney, Eighth District, Dona Ana, Lincoln and Otero Counties.
Las Cruces New Mexico

HARVE DUVAL,
Attorney at Law.
Land, Mining and Corporation Law exclusively. Practice in all the District Courts and Supreme Court. Special attention to perfecting titles and organizing and financing land and mining properties.
Office, Laughlin Bldg., Santa Fe, N. M.

H. M. DOUGHERTY,
Attorney and Counselor at Law.
Practices in the Supreme and District Courts of the Territory.
Office, Socorro, New Mexico.

Catron & Gortner,
Attorneys and Counsellors at Law.
Catron Block.
Santa Fe New Mexico.

JOHN K. STAUFFER,
Notary Public.
Office with the New Mexican Printing Co., Santa Fe, New Mexico.

ROMAN L. BACA,
Real Estate and Mines.
Spanish Translator, Notary Public.
Office Griffin Bldg., Washington Ave., Santa Fe, N. M.

OSTEOPATHY.
DR. CHARLES A. WHEELON,
Osteopath.
No. 103 Palace Ave.
Successfully treats acute and chronic diseases without drugs or medicines.
No charge for Consultation.
Hours: 9-12 m., 2-5 p. m. Phone 156.

CONY T. BROWN,
Mining Engineer.
Secretary and Treasurer New Mexico School of Mines.
Socorro New Mexico.

CORBET & SMYTHE,
Civil, Mining and Hydraulic Engineers.
Assaying and General Contracting.
U. S. Deputy Mineral Surveyors.
East side Plaza. Santa Fe, N. M.

DAVID M. WHITE, C. E.
(Late Territorial Engineer.)
Irrigation, Water Supply, Railroad and Bridge Building.
Santa Fe, New Mexico.

IT'S COLD HERE.
Our beer sales have almost doubled since installing a modern sanitary system. You can always find a little cold bottle here of either Blue Ribbon, Schlitz or Lemp's. Phone 94. The Club.

THE FIRST NATIONAL BANK

OF SANTA FE.

The oldest banking institution in New Mexico. Established in 1870.
RUFUS J. PALEN, President. JOHN H. VAUGHN, Cashier.
LEVI A. HUGHES, Vice President. ALFRED H. BRODHEAD, Assistant Cashier.

Capital Stock, \$150,000. Surplus and Undivided Profits \$63,500.

Transacts a general banking business in all its branches. Loans money on the most favorable terms on all kinds of personal and collateral security. Buys and sells bonds and stocks in all markets for its customers. Buys and sells domestic and foreign exchange and makes telegraphic transfers of money to all parts of the civilized world on as liberal terms as are given by any money transmitting agency, public or private. Interest allowed on time deposits at the rate of three per cent per annum, on six months' or year's term. Liberal advances made on consignments of live stock and products. The bank executes all orders of its patrons in the banking line, and aims to extend to them as liberal treatment in all respects, as it is consistent with safety and the principles of sound banking. Safety Deposit boxes for rent. The patronage of the public is respectfully solicited.

THE PALACE HOTEL

WILLIAM VAUGHN, Prop.

One of the Best Hotels in the West

Cuisine and Table Service Unexcelled

Large Sample Rooms for Commercial Travelers.

Santa Fe, New Mexico. - Washington Avenue

LACOME & GABLE, Proprietors.

C
L
A
I
R
E
HOTEL



Postal Telegraph Cable Co. Office.

American and European Plan. Commodious Sample Rooms. Steam Heated. Electric Lighted. Every Room a Good One. Short Order Department Open Day and Night. Press the Button we do the rest.

CORONADO HOTEL AND CAFE

THE BEST PLACE IN TOWN TO GET A GOOD MEAL.

If You Have Not Taken a Meal at The (CORONADO) it Will Pay to Do so... Why Not Join These People.

GOOD ROOMS WITH ALL MODERN CONVENIENCES.

Short orders upon short notice. We cater to the appetites of our customers. COME, COME, COME.

G. LUPE HERRERA, Prop.

BERGERE INSURANCE AGENCY COMPANY

GENERAL AGENTS FOR NEW MEXICO FOR

PENN MUTUAL LIFE INSURANCE COMPANY
OF PHILADELPHIA, PA.

Purely a Mutual Insurance Company.

National Surety Co., of New York

Court Fidelity and Public Official Bonds—Lowest Rates.
Strong Line of Fire Insurance Companies.

Palace Avenue

SANTA FE, ... NEW MEXICO

DIAMONDS H. C. YONTZ WATCHES

RIGHT PRICES
RIGHT GOODS
RIGHT SERVICE

Manufacturer of
MEXICAN FILIGREE
JEWELRY

Eyes Tested and
Fitted by Up-to
Date Methods

CUT GLASS, CHINA AND SILVERWARE
246 San Francisco St. Santa Fe, N. M.

(Homestead Entry No. 7190).

Notice of Publication.
Department of the Interior,
Land Office at Santa Fe, N. M.August 29, 1907.
Notice is hereby given that Higino Lucero, of Galisteo, N. M., has filed notice of his intention to make final five year proof in support of his claim, viz: Homestead entry No. 7190, made August 21, 1902, for the NW 1-4 NW 1-4, section 9, lot 4, section 4, lot 5, section 5, township 13 N, range 9 E, and that said proof will be made before register and receiver at Santa Fe, New Mexico on October 10, 1907.

He names the following witnesses to prove his continuous residence upon, and cultivation of, the land, viz: Augustin Ramirez, of Galisteo, N. M. Juan Villanueva, of Galisteo, N. M. Tomas Villanueva, of Galisteo, N. M. Francisco Gonzales, of Galisteo, N. M.

MANUEL R. OTERO,
Register.

Take DeWitt's Kidney and Bladder Pills for backache, weak kidneys and inflammation of the bladder. Sold by Ireland Pharmacy Company.

Herewith are some bargains offered by the New Mexican Printing Company: Code of Civil Procedure of the Territory of New Mexico, 1897, sheep bound, \$1; paper bound, 75c; Missouri Pleading forms, \$5; Missouri Code Pleadings, \$6; the two for \$10; Adapted to New Mexico Code, Laws of New Mexico, 1899, 1901 and 1903, English and Spanish pamphlet, \$2.25; full letter, \$3; Sheriff's Flexible-Cover Pocket Docket, single, \$1.25; two or more books, \$1 each; New Mexico Supreme Court Reports, Nos. 3 to 10, inclusive, \$3.30 each; Compilation Corporation Laws, 75c; Compilation Mining Laws, 50c; Money's Digest of New Mexico Reports full sheep, \$6.50; full list school blanks.

Try a New Mexican Want Ad.

NEW MEXICO MILITARY INSTITUTE

ROSWELL, NEW MEXICO.

THE MILITARY SCHOOL OF NEW MEXICO.

Established and Supported by the Territory.

EIGHT MEN INSTRUCTORS, all graduates of Standard Eastern Colleges. New buildings, all furnishings and equipments, modern and complete; steam-heated, electric-lighted, baths, water-works, all conveniences.

TUITION, BOARD and LAUNDRY, \$250 per session. Session is three terms of thirteen weeks each.

ROSWELL is a noted health resort, 3,700 feet above sea level; well watered. Sunshine every day from September to June.

REGENTS—Nathan Jaffa, W. M. Reed, W. M. Atkinson, W. A. Finlay and E. A. Cahoon.

For particulars, address COL. J. W. WILSON, Supt.

The New Mexican Printing Company claims to do the best of better grades of printing and binding—caters particularly to people who want something a little out of the ordinary or a little better than the average—does not claim to be the cheapest in the Territory, but does claim that its work is always worth the price asked for it, and this price is based on accurate knowledge of the cost of material and skilled labor; communicate with the Company in regard to the next lot of printing. Address The New printing and binding in the Territory—says it makes a specialty executed and at Right Prices.

OJO CALIENTE HOT SPRINGS.

These Celebrated Hot Springs are located in the midst of the Ancient Cliff Dwellings, twenty-five miles west of Taos, and fifty miles north of Santa Fe, and about twelve miles from Baranca Station, on the Denver & Rio Grande Railroad, from which point a daily line of stages runs to the springs. The temperature of these waters is from 90 to 122 degrees. The gases are carbonic. Altitude 6,000 feet. Climate very dry and delightful the year round. There is now a commodious hotel for the convenience of invalids, and tourists. People suffering with consumption, cancer, and other contagious diseases, are not accepted. These waters contain 1,686.24 grains of alkaline salts to the gallon, being the richest alkaline Hot Springs in the world. The efficiency of these waters has been thoroughly tested by the miraculous cures attested to in the following diseases: Paralysis, Rheumatism, Neuralgia, Malaria, Bright's Disease of the Kidneys, Syphilitic and Mercurial Affections, Scrofula, Catarrh, La Grippe, all Female Complaints, etc. etc. Board, lodging and bathing \$2.50 per day; \$15 per week; \$50 per month. Stage meets Denver trains and waits for Santa Fe train upon request. This resort is attractive at all seasons and is open all winter. Passengers for Ojo Caliente can leave Santa Fe at 9 a. m., and reach Ojo Caliente at 4 p. m., the same day. Fare for round trip from Santa Fe to Ojo Caliente, \$7.40. For further particulars, address.

ANTONIO JOSEPH, Proprietor.

Ojo Caliente, Taos County, N. M.

OUR PLACE

OTTO RETSCH, Proprietor.

PABST'S BLUE RIBBON—The Beer of Quality.
ANY QUANTITY—FROM A PINT UP.

Fine Wines, Liquors and cigars.

WEST SIDE OF PLAZA . . . SANTA FE, N. M.

WHEN in need of anything on Earth try a

NEW MEXICAN WANT AD.

It will positively bring results.

PERFECT CONFIDENCE

Santa Fe People Have Good Reason
For Complete Reliance.Do you know how—
To find quick relief from backache;
To correct distressing urinary ills;
To surely cure sick kidneys?
Just one way—your neighbors know—Have used Doan's Kidney Pills;
Have proved their worth in many tests.

Here's Santa Fe testimony.

Locario Lopez, living at Alto St., Santa Fe, New Mexico, says: "I have never lost my confidence in Doan's Pills since the first day I used them. Trouble with my kidneys caused me a great deal of suffering for ten years. At times I could not walk, sleep or even lie down on account of the intense pain in my back. A weakness of the kidneys caused me to rise often at night and during the day I experienced difficulty in holding the secretions. Further evidence of fault was shown by a white sediment which they contained. I tried different remedies but derived no benefit until I began the use of Doan's Kidney Pills, a box of which I procured at The Ireland Pharmacy. Three boxes cured me and I had no return of the trouble until about a year ago, and then knowing what to do I did not give it a chance to get a hold of me as formerly but was relieved immediately by one havebox of Doan's Kidney Pills and I have been well from that time on. I certainly take pleasure in renewing my recommendation of Doan's Kidney Pills."

For sale by all dealers. Price 50 cents. Foster-Milburn Co., Buffalo, New York, sole agents for the United States.

Remember the name—Doan's—and take no other.

Subscribe for the Daily New Mexican and get the news.

CIMARRON IS
ENJOYING BOOMThriving Railroad Town in Colfax
County Looking Up—Prosperity
Abounds.

Cimarron, N. M., Sept. 19.—The Rev. Samuel Linge, pastor of the M. E. Church, south, left yesterday for Elkins, Chaves county, where he goes to dispose of his property at that place. Mr. Linge has been on the Cimarron field but four months, but in that time has worked up a creditable organization and has built a church. He will return the latter part of the week.

The public schools here opened last week with a large enrollment. Miss Margaret Cavanaugh, Miss Mariam Ellis and Miss Mable Ring, constitute the corps of teachers. The crowded condition of the hotels of this town is evidence of the boom which Cimarron is experiencing. The St. James, under the management of John Duquette, the Swastika, managed by Mrs. Savage, the Livingston hotel, managed by Mrs. Livingston and daughters and the Oxford, managed by W. B. Marling, with a total capacity of more than one hundred rooms, have been nightly turning away guests.

The Cimarron and Northwestern Railway has five engines and 50 cars shipped and en route between Cimarron and Kansas City, for use on its new line up Ponil river.

A new county bridge is being put across the Cimarron river on the street connecting the old and new towns. This improvement is greatly needed as the old bridge is becoming unsafe.

The Cimarron National bank is erecting a fine bank building on Ninth street, just across from the park. The new building will be two story, 50 by 80 feet.

Henry S. Allison, who was assistant chief clerk of the last session of the legislature at Santa Fe, has been engaged by the Raton Range to do editorial work on the Cimarron News and Press, which is published by the Range Printing Company. Mr. Allison is a writer of considerable ability and is rapidly working up the subscription list and influence of his paper in this community.

With the building of the machine shops and round house of the Cimarron and Northwestern Railway here the town will have a large population of railroad men. The St. Louis, Rocky Mountain and Pacific has already a large force of men employed in the shops of that road which are located here.

Trial Catarrh treatments are being mailed out free, on request, by Dr. Shoop, Racine, Wis. These tests are proving to the people—without a penny's cost—the great value of this scientific prescription known to druggists everywhere as Dr. Shoop's Catarrh Remedy. Sold by all druggists.

FATAL BOXING BOUT
AT LAS VEGASYoung Man Kills Own Brother—Blow
Over Heart Caused Attack of
Paralysis.

Las Vegas, N. M., Sept. 19.—During a friendly boxing bout here on Sunday evening between Benito Valedex and Melano Valedex, brothers, the latter was struck over the heart with such force that paralysis resulted from which he died twenty-four hours later. The older brother is almost crazed with grief and fears are entertained that he may lose his mind. No blame was attached to him as the blow was not struck with any thought of killing his brother. The coroner did not deem it necessary to hold an inquest.

Lame Back.

This is an ailment for which Chamberlain's Pain Balm has proven especially valuable. In almost every instance it affords prompt and permanent relief. Mr. Luke LaGrange, of Orange, Mich., says of it: After using a plaster and other remedies for three weeks for a bad lame back, I purchased a bottle of Chamberlain's Pain Balm, and two applications effected a cure." For sale by all druggists.

IMMENSE IMPORTATION
OF LIVESTOCK FROM N. M.

El Paso, Tex., Sept. 19.—The largest importation of live stock ever to come through the port of El Paso from Mexico in one season will pass through the latter part of the present month. It is the biggest shipment of live stock ever sent out of Mexico by one man. The importation amounts to 55,000 head of cattle and sheep, for which \$438,000 was paid.

Colonel Charles F. Hunt, the well known cattle dealer, formerly of Albuquerque, New Mexico, will ship through El Paso during the next thirty days 34,000 lambs and 21,000 head of steers and yearlings, all from the ranch of Luis Terrazas. Colonel Hunt bought the shipment for Colorado parties and the cattle for South Park pasture, Colorado, and for the Kansas City markets.

Had Tetters for Thirty Years.

I have suffered with tetters for thirty years and have tried almost countless remedies with little, if any, relief. Three boxes of Chamberlain's Salve cured me. It was a torture. It breaks out a little sometimes, but nothing to what it used to do.—D. H. Beach, Midland City, Ala. Chamberlain's Salve is for sale by all druggists.

COLFAX COUNTY MAN
KILLS MOUNTAIN LION.

Raton, N. M., Sept. 19.—James Lall killed a big mountain lion a few days ago in Vermejo canon near Dawson. He brought the skin of the animal to a taxidermist here to have it mounted. Lall reports mountain lions numerous in the mountains in the vicinity of Dawson.

Cured Hay Fever and Summer Cold.

A. J. Nusbaum, Batesville, Indiana, writes: "Last year I suffered for three months with a summer cold so distressing that it interfered with my business. I had many of the symptoms of hay fever, and a doctor's prescription did not reach my case, and I took several medicines which seemed to only aggravate my case. Fortunately I insisted upon having Foley's Honey and Tar in the yellow package, and it quickly cured me. My wife has since used Foley's Honey and Tar with the same success." For sale at The Ireland Pharmacy.

"BOOTH'S OYSTERS."

The very finest in the land have just been received at the Bon Ton Restaurant. These are the very first of the season and can be found only at this place where they are up-to-date in everything. A trial will convince you.

If real coffee disturbs your stomach, your heart or kidneys, then try this clever coffee imitation—Dr. Shoop's Health Coffee. Dr. Shoop has closely matched old Java and Mocha Coffee in flavor and taste, yet it has not a single grain of real coffee in it. Dr. Shoop's Health Coffee Imitation is made from pure toasted grains or cereals, with malt, nuts, etc. Made in one minute. No tedious long wait. You will surely like it. Get a free sample at our store. For sale by Cartwright-Davis Company.

"HO! OYSTERS! HO!"

The first of the season just received at the only up-to-date short order house, The Bon Ton, where they are being served to your taste. Call and be convinced. They handle A. Booth's New York oysters, which come in sealed cans.

To check a cold quickly, get from your druggist some Little Candy Cold Tablets called Preventics. Druggists everywhere are now dispensing Preventics, for they are not only safe, but decidedly certain and prompt. Preventics contain no quinine, no laxative, nothing harsh nor sickening. Taken at "sneeze stage" Preventics will prevent Pneumonia, Bronchitis, La Grippe, etc. Hence the name, Preventics. Good for feverish children. 48 Preventics, 25 cents. Trial boxes 5 cents. Sold by all druggists.

HOT TAMALES.

Hot Tamales, Chile Verde, Chile Colorado, Pozole with Cuertitos, Menudo and Chicken Temole are among the Mexican and Spanish dishes which are being served nightly at the up-to-date short order house, The Bon Ton Restaurant.

HOT SPRINGS WATER.

We make a specialty of handling during the hot summer months the celebrated Potash Sulphur Water from Hot Springs, Arkansas. A well known specific for stomach, and kidney trouble. Phone 94, The Club.

Don't neglect your stomach. At the first indication of trouble take something that will help it along in its work of digesting the food you eat. Kodol for Indigestion and Dyspepsia will do this. Sold by Ireland Pharmacy Company.

SUMMER DRINKS.

Having recently spent several hundred dollars putting in new work-board and up to date system of drawing beer, we make the claim of serving as good beer as can be had at the swellest bars in the east. Phone 94, The Club.

OF INTEREST TO MANY.

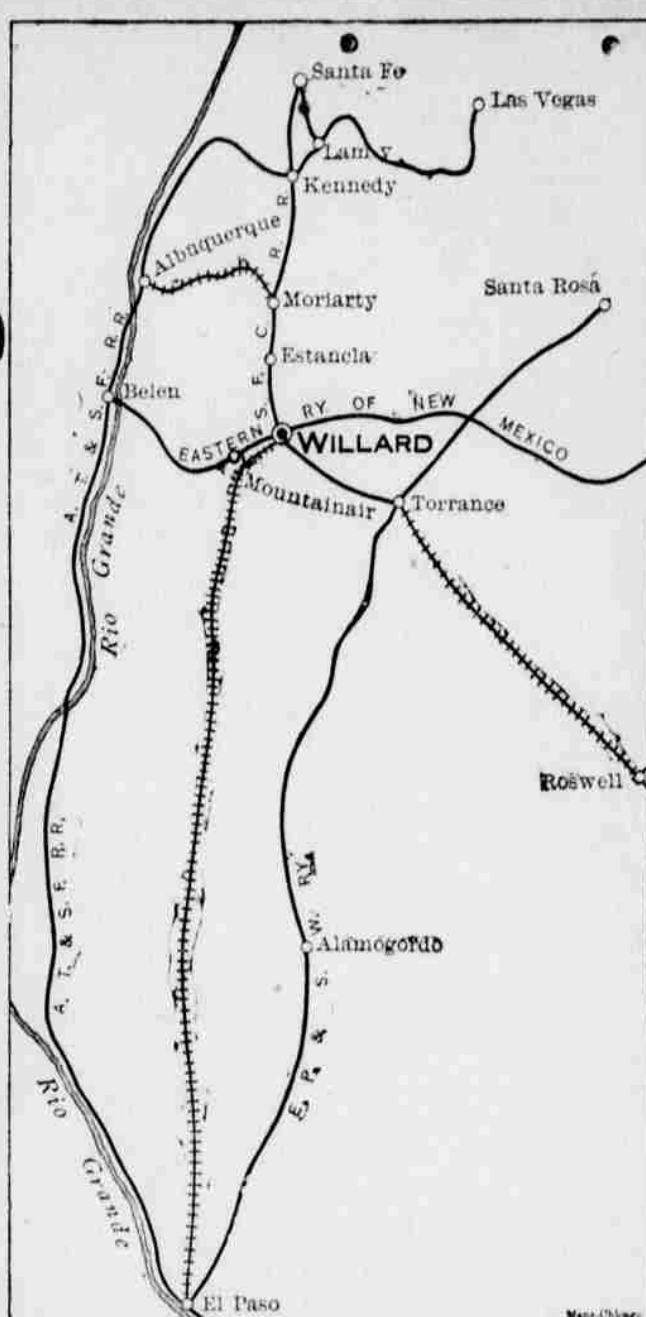
Foley's Kidney Cure will cure any case of kidney or bladder trouble that is not beyond the reach of medicine. No medicine can do more. For sale by The Ireland Pharmacy.

The New Mexican Printing Company is prepared to do the best of brief work in short order and at very reasonable rates. Lawyers, who decide to have their briefs printed rapidly and correctly and to present them to the Supreme Court now in session here on time, should call on the New Mexican Printing Company.

PROPOSALS FOR BUILDING MATERIALS.

ETC. Albuquerque, N. Mex., Sept. 19, 1907. Sealed proposals plainly marked on the outside of the envelope "Proposals for Building Materials, etc.," and addressed to the undersigned at Albuquerque, N. Mex., will be received at the Indian School until 12 o'clock p. m. of Oct. 10, 1907, for furnishing and delivering at the school as required during the fiscal year ending June 30, 1908, about 37,000 feet of lumber, 28,000 shingles, 84 doors, windows and transoms, 18 columns, 102,000 brick, 16 square shingles, 380 feet of valley, 111 feet of stone sills, 137 square yards plastering, 250 barrels cement, 2 boilers, 2 lavatories, 2 closets, a bath tub, and a quantity of pipe, electrical supplies, radiation, etc. etc. as per list and specifications obtainable at the school. Bidders must state in their bid the proposed price of each article to be offered under contract. All articles so offered will be subject to rigid inspection. The right is reserved to reject any or all bids or any part of any bid if deemed for the best interests of the service. Each bid must be accompanied by a certified check or draft on some United States depository or solvent national bank payable to the order of the undersigned of Indian Affairs for at least 5% of the amount of the proposal, which check or draft shall be forfeited to the United States in case a bidder receiving an award shall fail to execute promptly a satisfactory contract in accordance with his bid; otherwise to be returned to the bidder. Bids accompanied by cash in lieu of certified check will not be considered. For further information apply to BURTON B. CUSTER, SUPERINTENDENT.

Willard is Growing Fast



STUDY THE MAP.

The natural point on the New A. T. & S. F. Cut-off for the distribution of freight, having the advantage of the easy grades and short route to the East and West, and direct communication with all points in the Territory.

Wholesale houses are coming to Willard as soon as the Cut-off is open. Surrounded by a fine farming country. The purest water in New Mexico. The geographical center of Torrance County and of New Mexico. The water point on the great A. T. & S. F. short line through New Mexico. Willard is a growing town. Willard will make a City. Study the Map. For information, call on or address

FRANK L. WALRATH, REAL ESTATE.
WILLARD, N. M.

Santa Fe Livery Stable

THEODORE CORRICK Proprietor.

LIVERY, BOARDING AND FEED STABLE

FIRST-CLASS CARRIAGE SERVICE
GOOD SADDLE HORSES
FINE RIGS

'PHONE 132. 120 SAN FRANCISCO ST.

ADOLPH SELIGMAN

Special Summer Sale of

LADIES MUSLIN UNDERWEAR

White Goods, Laces and Embroideries.

ADOLPH SELIGMAN

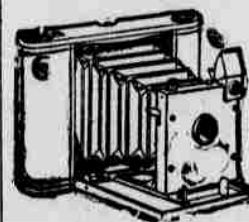
A. F. Spiegelberg.

257 San Francisco Street.

Indian and Mexican Wares and Curios

Blankets, Baskets, Rag, Wax, Feather and Linen Drawn Work,
Opals, Turquoises, Garnets and Other Gems.

OUR MOTTO: To Have the Best of Everything in Our Line.



Kodaks and Photo Supplies.

ART PICTURES AND FRAMING

We make a specialty of DEVELOPING, PRINTING and ENLARGING. Mail Orders Given Prompt Attention. Send for Catalogue.

HOWLAND & DEWEY COMPANY,
510 S. Broadway, Los Angeles, Calif.

FOR THAT TIRED FEELING.

Men whose work keeps them largely indoors; men whose vital forces are consumed by the tremendous strain entailed by constant mental application to business details, will find Dr. Lauritzen's Malt Tonic the most delicious and invigorating of tonics.

H. S. KAUNE & CO.
CITY BOTTLING WORKS, Phone 38.

HOW TO AVOID APPENDICITIS.

Most victims of appendicitis are those who are habitually constipated. Orino Laxative Fruit Syrup cures chronic constipation by stimulating the liver and bowels, and restore the natural action of the bowels. Orino Laxative Fruit Syrup does not nauseate or gripe and is mild and pleasant to take. Refuse substitutes. For sale by The Ireland Pharmacy Co.

The New Pure Food and Drug Law.

We are pleased to announce that Foley's Honey and Tar for coughs, colds and lung troubles is not affected by the National Pure Food and Drug Law as it contains no opiates or other harmful drugs, and we recommend it as a safe remedy for children and adults. For sale by The Ireland Pharmacy.

Every Woman
is interested and should know about the wonderful
MARVEL Whirling Spray
The new Vaginal Syringe.
Best—Most convenient.
It cleanses instantly.
Ask your druggist for it.
If he cannot supply the
MARVEL, accept no
other, but send stamp for
illustrated book—read it.
It gives full particulars and directions
valuable to ladies. MARVEL CO.,
106 East 5th Street, NEW YORK.

JUST A FEW WORDS



Copyright 1907 by Hart Schaffner & Marx

Your New Fall Clothes are ready for you now in our store and we are going to introduce them to you. You are invited; and when you come you'll meet a lot of the finest clothes you ever saw. These are the Hart Schaffner and Marx Clothes. The new suits are in a number of very Smart Models, and the Patterns are varied enough to suit every taste, Grays, Browns Tans, in stripes Plaids and Checks.

THE NEW FALL

Overcoats are Certainly Very Snappy, you'll Find your Kind here. Its hardly necessary to say that Hart Schaffner and Marx Clothes are always Wool, you get no Cotton Mixture stuff under that name.

NATHAN SALMON.

THE LARGEST AND MOST UP-TO-DATE DRY GOODS HOUSE IN THE CITY

PERSONAL MENTION

W. N. Townsend has returned from a business trip to Albuquerque. Judge E. V. Long, Las Vegas attorney, has returned from attending district court at Clayton, Union County.

S. N. Laughlin of San Cristoval Springs, on the Eaton land grant, was in town today on business. He was a guest at the Palace Hotel.

O. D. Cheatham of Las Vegas, who is engaged in the fruit commission business in the Meadow City, was a visitor today in the Capital.

Jesus S. Garcia, who is the efficient and reliable deputy probate treasurer of Torrance County, is visiting relatives in Albuquerque for a few days.

H. L. Aranda, a resident of San Pedro, south Santa Fe county, yesterday was among the guests at the Coronado. He came to this city on personal business.

Nicolas M. Ortiz, farmer in the vicinity of Cow Springs, southern Santa Fe county, was a guest yesterday at the Normandie hotel. He was here on business.

Mrs. W. M. Taber, of Glorieta, wife of the manager of the Glorieta Mercantile and Livestock Company, spent the day in the city shopping. She was a guest at the Claire hotel.

A. M. Dettelbach, secretary of the New Mexico Volunteer Firemen's association, returned yesterday from a brief business trip to Albuquerque, and left this afternoon for Estancia.

Mrs. S. Spitz and daughter, Miss Florence Spitz, left today for Chicago and South Bend, Indiana. Miss Spitz will attend the St. Mary's Institute at Notre Dame, near South Bend.

E. R. Tallmadge of the Tallmadge Brothers Land company of Chicago, was in town today on business. The Tallmadge Brothers are heavily interested in Chaves county land holdings.

Mr. and Mrs. J. Vandeventer of Knoxville, Tennessee, and C. Vandeventer of Chicago, were among the tourists arriving last evening in Santa Fe. They are making a sightseeing trip through the Southwest.

Mrs. T. B. Catron, accompanied by her son, Fletcher, was a passenger on this morning's east bound Santa Fe train for New Haven, Connecticut, where she goes to place the boy in a preparatory school for Yale University.

John Hesch of Palma, Torrance county, who has been in the city for several days, and attended the wedding yesterday of his son, William Hesch to Teresita Martinez, left this morning on a visit to relatives at San Mateo.

Miss Alberta Kerr, daughter of Mr. and Mrs. W. H. Kerr, left this morning for Quindaro, Kansas, where she goes to resume her studies at Western University for the coming scholastic year. She was accompanied as far as Lamy by her mother.

Colonel W. A. Glasford, Signal Corps, U. S. Army, after a very pleasant visit here yesterday, left last night for Las Vegas, where he joined Mrs. Glasford, who has been on a visit to her mother, Mrs. S. B. Davis, in the Meadow City.

I. H. Rapp, architect who has furnished the plans and had charge of construction of several public buildings in this city, and which work was performed creditably and ably, spent the day in town on business. He was registered at the Claire.

J. J. Goutchey, chief deputy in the office of Internal Revenue Collector Henry P. Barshar, is expecting his wife home the latter part of this week. Mrs. Goutchey has spent the past several months on a visit to relatives and friends in and near Chicago.

E. O. Faulkner, manager of the tie and timber department of the Santa Fe railroad, sailed from San Francisco on Saturday last for the Orient and Australia, on a hunt for suitable varieties of trees to be grown by the Santa Fe for tie and timber purposes.

Charles Rathburn, the baseball player, who formerly played with the Las Vegas Blues, and played several games this season with the Albuquerque Browns, arrived in the city today and will hold down third base for the



Baby won't cry if you give Him BALLARD'S HOREHOUND SYRUP.

Pleasant to take, rapid results. Contains nothing injurious.

CURES COUGHS, COLDS, CROUP, SORE THROAT, WHOOPING COUGH AND ALL PULMONARY DISEASES.

Mrs. J. C. Jenkins, Denver, Colo., writes: "I can't say enough for Ballard's Horehound Syrup. It has cured my baby of the croup and my children of severe Coughs. I know no better medicine."

25c, 50c and \$1.00

Ballard Snow Liniment Co. ST. LOUIS, MO.

Sold and Recommended by FISCHER DRUG STORE.

locals in the return game next Sunday against the Duke City club.

Dr. C. I. Shoop, of Racine, Wisconsin, has returned to his northern home after spending part of the summer in Santa Fe. He was accompanied to Racine by Mrs. Paddock and Miss Paddock, mother and sister of Mrs. Shoop, who will be absent a month or more.

Eduardo M. Otero, son of Mrs. A. M. Bergere of this city, arrived here yesterday on a visit to his mother and at the Bergere home. Mr. Otero spends a good deal of his time on the Gila forest reserve where he has charge of a large herd of sheep for his uncle, Hon. Solomon Luna.

Ralph Hunt, live stock commission merchant at Albuquerque, has returned to the Duke City from a trip to Arizona. While in the latter territory he purchased several thousand lambs on account of his brother, Charles F. Hunt, a well known live-stock dealer in El Paso, Texas.

J. M. Hervey, a well known Roswell attorney, and who for a number of years was territorial district attorney for the counties of Chaves, Eddy and Roosevelt, arrived last evening in Santa Fe. Mr. Hervey resigned this important position on account of ill health. While its incumbent his services were very satisfactory and effective.

General Manager W. S. Hopewell, of the New Mexico Fuel and Iron Company, left Albuquerque last evening for the east on business connected with the Albuquerque Eastern Railway and the branch off that line to the Hagan coal fields. He will visit Pittsburg, New York and other eastern cities, and while in New York will be a guest at the Hotel Imperial

(Continued on Page Eight.)

LEGAL BLANKS.

Hipoteca de Bienes Muebles, 1-2 plego.
Planza Oficial y Juramento, 1-2 plego.
Documento Garantizado, 1-2 plego.
Title Bond and Lease of Mining Property, 1-2 sheet.
Warrant, 1-4 sheet.
Commitment, 1-4 sheet.
Peace Proceedings, Complaint, 1-4 sheet.
Subpoena, 1-4 sheet.
J. P. Complaint, 1-4 sheet.
Capias Complaint, 1-4 sheet.
Search Warrant, 1-4 sheet.
Desert Land Entry, 4-074c, 1-2 sheet.
Affidavit required of claimant, 4-069, 1-2 sheet.
Affidavit, 4-102b, 1-2 sheet.
Final proof of Desert Land Entry, 4-373a, 1-2 sheet.
Affidavit Required of Claimant, 4-069 1-2 sheet.

New Mexico Supreme Court Reports Nos. 1 and 2, full Leather \$6.50 a volume; 3 to 11, inclusive, price, \$3.20 each. Postage 25c.
er, \$3.50. Postage, Leather, 16c, paper, 14c.

Assignment of Mortgage, 1-2 sheet.
Application for License, Retail Liquor License, 1-2 sheet.
Application for License, Game and General License, 50 in Book, \$3.00
English and Spanish, 100 in Book, 75c.

Power of Attorney, 1-2 sheet.
Bill of Sale—Animals Not Bearing Deed of Trust, full sheet.
Affidavit and Order for Publication of Notice of Contest against a Non-resident Entryman, 4-628, 1-2 sheet.
Final Homestead Proof, 4-368, full sheet.

Homestead Affidavit, 4-063, 1-2 sheet
Certificado de Nomenclamiento, 1-4 plego.
Renewal of Chattel Mortgage, 1-2 sheet.

Sigra. Card Board.
Poll Tax List, 4, 6, and 8 pages.
Satisfactor of Mortgage, 1-2 sheet.
Compiled Laws of New Mexico, \$9.50, postage, 45c.

Poll Tax Receipt Book, English and Spanish, 50 in Book, 25c.
\$2.75 delivered, Desks, \$3.25 delivered nearest express office.

Notice of Protest, 1-4 sheet.

ESTABLISHED 1856.

INCORPORATED 1903.

Seligman Bros. Co.
TOPSY HOSIERY

FALL OPENING

All the latest and most desirable effects in Dress Goods and Silk Waist Patterns.

Also a Complete Up-to-Date Line of Mens Youths, Boys and Childrens Clothing at lowest prices. Our Merchant Tailoring Department is the best in the city and we

GUARANTEE SATISFACTION

CALL AND BE CONVINCED

P. O. Box 219. —O— Phone No. 86.

For Half a Century the Leading Dry Goods House in the City.

CHARLES WAGNER Furniture Company.

Iron and Brass Beds, Rattan Goods, Kitchen Cabinets, Book and Corner Stands, Just Received.



EMBALMING AND UNDERTAKING A SPECIALTY.

306-8 San Francisco St. 'Phone 10.
Night Call 'Phone No. 1.



When You Want to Buy, Sell or Exchange

HOUSEHOLD GOODS

Keep Busy Until You Find **D. S. LOWITZKI**

Goods Sold on Easy Payments. Large Stock of Picture Moulding.

Santa Fe Concrete Block Company

Reference: Quality of Blocks Produced. SEE OUR NEW FACE PATTERNS

GEO. S. BLUNT, MGR.

WOOD-DAVIS

HARDWARE COMPANY

PHONE 14.

PHONE 14.

Shelf and Heavy Hardware, Modern Plumbing and Heating, Mining Supplies

Paints
Oil
Glass
Varnishes
Wood Dyes
Kalsomine
Wallpaper
Brushes

Stoves
Ranges
Refrigerators
Ice Cream Freezers
Lawn Mowers
Garden Hose
Screen Doors
Window Screens

Wagon Covers
Tents
Bedsheets
Hammocks
Harness
Saddles
Pumps
Cylinders

Iron Pipes and Fittings, Camp Out Kits, Fishing Tackle, Ammunition, Rifles, Shot Guns, Pistols.

THE NEW MEXICO

COLLEGE OF AGRICULTURE AND MECHANIC ARTS.

Supported by Federal and Territorial appropriations. Located in the beautiful Mesilla Valley, with an ideal climate the year round. Altitude 3,800 feet. Four hundred acres in cultivation and in large parade and athletic grounds.

A faculty of 40 instructors. \$100,000 in equipment. Military instruction by an officer of the United States Army. Large and commodious Girls' Dormitory and Boys' Club.

Agriculture, Engineering, Domestic Science and General Science offer full four year courses. Short courses in Agriculture, Stenography and Typewriting, Bookkeeping, and Assaying.

Fall term opens September 3rd. For information address,

LUTHER FOSTER, President

(P. O.) Agricultural College, N. M.

SEE

EHLE

FOR
Suits That Are
Right

4 Per Cent on Time Deposits

ON CERTIFICATES OF DEPOSIT AND SAVINGS ACCOUNTS.

Place your account with us NOW, and when, a little later on, you may want to borrow money for any purpose whatsoever, you will find us amply able and disposed to accommodate you on the very best terms and rates obtainable anywhere.

If you have valuable papers of any kind, such as deeds, notes, insurance papers, etc., why not rent one of our Safety Deposit boxes, where your papers will be safe in our fire-proof vault?



WE COUNT
YOUR GOOD WILL

much the largest asset we have in our business. To have our customers say to their friends, "Every statement made by S. Spitz can be relied upon" is the very best recommendation we can strive for. Reliability is our watchword and every sale we make is closed only after the purchase proves entirely satisfactory. It is a great satisfaction to buy at a store like this. Every article carries with it our guarantee.

S. SPITZ, Manufacturing Jeweler, Dealer in Watches, Jewelry, Diamonds.

LIVERY STABLE

FINE RIGS, RELIABLE HORSES, SINGLE BUGGIES, SURRIES, HACKS.

CALL UP 'PHONE NO. 9

When in Need of Anything in the Livery Line. Drivers Furnished. Rates Right.

CHAS. CLOSSON.



YOU HIT THE RIGHT FEED

when you strike this establishment. We handle nothing but

FIRST-CLASS FLOUR AND FEED.

Those who have dealt with us don't have to be told how excellent our specialties are. And those who don't know our flour and feed are losing something every day they remain unacquainted. If you are one of these you should give us a trial order at once.

Sole Agency For
INTERNATIONAL STOCK FOOD.

LEO HERSCH

Wholesale and Retail Dealers in
FLOUR, HAY, GRAIN, POTATOES, SALT AND SEEDS.
THE ONLY EXCLUSIVE GRAIN HOUSE IN SANTA FE, NEW MEXICO.

MINOR CITY TOPICS

A. F. Spiegelberg's curio store was among the Jewish places of business here closed yesterday on account of Yom Kippur.

The Woman's Aid Society of the First Presbyterian church will meet tomorrow afternoon at 2:30 o'clock with Mrs. A. J. Abbott.

The registers at the various hotels in the city indicate that travel keeps up and that many travelers and tourists come to the Capital.

aSanta Fe Lodge No. 2, I. O. O. F., will hold its regular weekly meeting this evening at Odd Fellows' Hall at 7:30 o'clock. Visiting Odd Fellows are invited to attend.

In the professional column of the New Mexican will be found a card of the law firm of Catron and Gortner. The reputation of this firm is well known and speaks for itself.

Practically all of the local stores will close at 7:30 p. m., next Saturday in order that proprietors and employees may attend the night performance of Pawnee Bill's Wild west show.

F. C. Helge has resigned his position as a forest guard on the Jemez national forest and left this morning on a prospecting trip east of Santa Fe. He had been in the city for about a week, and while here was registered at the Normandie hotel.

Yesterday afternoon Chief of Police James H. McHughes sold at auction a colt, which was picked up on the Plaza a week ago. It is presumed the animal strayed from a transient outfit. The colt brought \$3, Justice of the Peace Jose Ma. Garcia being the purchaser.

Complaint has been made that a crowd of young boys have been throwing stones on the roof and breaking windows in the Presbyterian church. Justice of the Peace Jose Ma. Garcia is investigating the matter and will prosecute the offenders to the full extent of the law if the guilty parties are discovered.

Saturday and Sunday next will be rather lively in Santa Fe. Pawnee Bill's show will be the attraction on Saturday, while on Sunday the best base ball game of the season is promised at the new ball park, when the local club will meet the Albuquerque McIntosh-Brown to play off last Sunday's tie game.

The following visitors have registered since Sunday at the rooms of the Historical Society: J. F. Whiteford, Thomas Scully, G. H. Harlan, Albuquerque; Charles A. Anderson, Ala-

H. S. KAUNE & CO.

GROCERS.

Try a Pail of

CAPITAL COFFEE

Handsome Cup and Saucer
in Each Pail

Per Pail \$1.00

New Breakfast Food

**WHOLE WHEAT
BERRIES**

10c a Package

**PRICE'S CELERY
FOOD**

Was 12 1-2 Cents.

10c a Package

**COLORADO AND CALIFORNIA
FRUITS OF ALL KINDS**

**H. S. KAUNE & CO.
'PHONE 26.**

WHY DID YOU COME WEST?

To rest, recuperate, hunt, fish, breathe fresh, pure air, see mountain scenery, get a change, live a new and fascinating life under new conditions, and get food that needs no pure food law.

That's why you came west!

There is a beautiful little valley that nestles between the highest mountains of the Rockies on the upper Pecos river; ideal altitude, 7,000 feet, and temperature identical with Santa Fe. Its streams swarm with trout and the woods and ranges are filled with game large and small. The ranchers live the life of the west. There are mountain lion, bears, deer and wolves for the hunter. There are saddle ponies to be had for the asking, rooms in a big, rambling ranch house with wide verandas, tent rooms or a cabin if you want it. The days are never dull. You see a great ranch and the genuine western life. Fresh milk, butter and eggs—all you can drink and eat. Sleep in blankets at night—fish in your shirt sleeves during the day. You couldn't spend more than \$9 a week if you tried. It's the place you are looking for. Accommodations for both men and women.

Inquire this office or address **THE VALLEY RANCH, Pecos N. M.**

CHAS. ILFELD CO.

LARGEST WHOLESALE HOUSE IN NEW MEXICO

Prepared to Fill Small or Large Orders for Anything in
**GROCERIES, HARDWARE, IMPLEMENTS, SADDLERY
CROCKERY, DRY GOODS, NOTIONS, BOOTS,
SHOES, HATS, MILLINERY, CLOTHING**

Compare Our Goods and Prices. We Can Supply you
Quicker and Better Than Far-off Houses. Try Us.

CHAS. ILFELD CO.

ALBUQUERQUE, N. M.

Main Office, LAS VEGAS, N. M.

SANTA ROSA, N. M.

15 DAYS SPECIAL

In order TO INDUCE EARLY BUYING OF HEATERS, we will place on sale a full line of the CELEBRATED WILSON HEATERS, and many other well known brands, at 10 to 25 PER CENT BELOW OUR USUAL LOW SALE PRICE, and continue the sale until the 30th of September. HERE ARE UNUSUAL BARGAINS to close out a few stoves carried over from last season, and to make room for the car of stoves en route. Each stove absolutely perfect, each absolutely guaranteed, and THE PRICE IS UNAPPROACHABLE. Set up your stove now, before chilly nights arrive and before the fall rush begins. WE ARE EXCLUSIVE AGENTS FOR THE WILSON—You cannot get them elsewhere and they are unequalled as heaters.

No. 130 BOSS HEATER, full nickle trimming, worth \$9.00 for. \$ 7.50
No. 170 BOSS HEATER, full nickle trimming, worth \$14.90, for. 12.00
No. 190 BOSS HEATER, full nickle trimming, worth \$17.50, for. 14.00
No. 121 AIR BLAST HEATER, full nickle trimming, worth \$12.50, 10.50
No. 141 AIR BLAST HEATER, full nickle trim, worth \$15.50, for \$12.50
No. 112, N. P. WILSON, Hot Blast Coal Heater, worth \$14, for. 12.69
No. 114 N. P. WILSON Hot Blast Coal Heater, worth \$17, for. 15.30
No. 116 N. P. WILSON Hot Blast Coal Heater, worth \$19, for. 17.10
No. 120 N. P. Wilson Hot Blast Coal Heater, worth \$27.50 for. 24.75
No. 118 N. P. WILSON, Hot Blast Heater, worth \$24.50, for. 22.05

WE CAN SAVE YOU MONEY

Phone No. 83.

Mail orders given prompt attention.

Everything in Hardware



**FAYWOOD HOT SPRINGS
CELEBRATED HEALTH-RE-
SORT IN THE SOUTHWEST**

The waters of the Springs have proven very beneficial and thoroughly efficacious in cases of Kidney troubles, Locomotor Ataxia, Rheumatism, Gout, Neuritis, General Debility, and a perfect tonic for the up-building of the human system, body and mind.

First class hotel, with modern improvements, at the Springs. Rooms with bath if required. The greatest of care and attention given to guests and invalids. Table first-class and to suit. Miles of first-class roads in vicinity of Hotel and Springs; carriages, buggies and saddle horses furnished on application.

Climate of the best, especially from September 1st to June 1st. Address for particulars and for circulars.

THOS. C. McDERMOTT.

Faywood Hot Springs, Grant County, New Mexico.

HENRY KRICK

Sole Agent for

Temp's St. Louis Beer

All kinds of Mineral Waters

And Pabst Blue Ribbon Beer.

Mail orders promptly filled. 'Phone 38.

Montezuma Avenue, Santa Fe, N. M.

New Mexican Ads. bring returns.

SODA WATER!

Any Favor You Desire.

We will deliver Soda Water in any

quantity to any part of the city.

CITY BOTTLING WORKS.

Subscribe for the Daily New Mexican and get the news.



Santa Fe Central Railway Company

TIME TABLE

Effective Sunday, August 11, 1907.

South Bound			North Bound		
No	MI	Stations	Alt	No	MI
140	0	Live Santa Fe	7,000	5	28
242	22 Kennedy	6,050	4	28
336	41 Stanley	6,370	3	30
499	51 Moriarty	6,250	2	30
429	61 Moriarty	6,170	1	30
499	71 Moriarty	6,140	1	30
619	81 Moriarty	6,125	1	30
750	116	Arr Torrance	6,470	1	15

Freight, Passenger and Steamship business.

Pullman berths secured by wire. Connections: At Santa Fe, with Denver & Rio Grande Railroad, and Atchison, Topeka & Santa Fe Railway. At Kennedy, with Atchison, Topeka & Santa Fe Railway. At Torrance with El Paso & Southwestern System.

S. B. GRIMSHAW,
General Freight and Passenger Agent.

St. Louis Rocky Mt. & Pacific Railway Co.

PASSENGER SCHEDULE

In Effect September 1, 1907.

No. 31 Monday Wed. Friday.	Auto Car Daily Ex. Sun.	No. 1 Daily	Miles from Raton	STATIONS	No. 2 Daily	Auto Car Daily Ex. Sun.	No. 3 Monday Wednesday Friday
7:00 a. m.		4:00 p. m.	0	Leaves..... RATON, N. M.	11:15 p. m.		8:35 p. m.
7:25 a. m.		4:25 p. m.	7	CLIFTON HOUSE	11:57 a. m.		6:05 p. m.
7:50 a. m.		4:50 p. m.	13	PRESTON	1:40 a. m.		5:45 p. m.
8:20 a. m.		5:20 p. m.	20	ROEHLER JUNCTION	1:00 a. m.		5:20 p. m.
		5:10 p. m.	23	ROEHLER	1:10 p. m.		5:10 p. m.
9:10 a. m.		5:50 p. m.	33	VERMEJO	1:25 p. m.		4:05 p. m.
9:10 a. m.		5:55 p. m.	33	VERMEJO	1:15 a. m.		4:05 p. m.
9:33 a. m.		6:15 p. m.	41	CERRITOSO	9:53 a. m.		3:45 p. m.
10:20 a. m.		6:30 p. m.	47	CIMARRON	9:35 a. m.		3:15 p. m.
11:30 a. m.		7:00 a. m.	60	UTE PARK			1:40 p. m.

Connects with El Paso & Southwestern Ry. train 124, arriving in Dawson, N. M., at 6:10 p. m.
Connects with El Paso & Southwestern Ry. train 125, leaving Dawson, N. M., at 10:35 a. m.
Stage for Van Houten, N. M., meets trains at Preston, N. M.
Connects with Stage to and from Taos and Elizabethtown, N. M.
Track connection with A. T. & S. F. Ry., at Raton and Preston, with C. & S. Ry. at Des Moines, and E. P. & S. W. Ry. at Vermejo, N. M.
Cimarron, N. M., is depot for following stations in N. M.: Coate, Ponil Park, Rayado and Red Lakes.
Ute Park, N. M., is depot for following stations in N. M.: Arroyo Seco, Aurora, Baldy, Black Lakes, Cerro, Elizabethtown, Lobo, Questa, Ranchos de Taos, Red River City, Talpa, Taos, Twinning and Valdez.
E. J. DEDMAN, Superintendent, RATON, N. M.
J. VAN HOUTEN, Vice Pres. and Gen. Mgr., RATON, N. M.
W. A. GORMAN, Gen. Passenger Agt., RATON, N. M.

HOTEL ARRIVALS

Palace.
B. G. Curtis, Chicago; G. W. Glad-
ding, St. Louis; J. G. Griener, Kansas
City; Vicenta Montoya, Albuquerque.
M. B. Randall, Chicago; J. Van Deventer
and wife, Knoxville, Tennessee; C.
Van Deventer, Chicago; L. Stern, Kan-
sas City; Joseph B. Coe, New York;
S. N. Laughlin, San Cristoval; Mrs. F.
H. Young, St. Louis; R. B. Pegram,
Kansas City; C. A. Ogg, Douglas,
Kansas; J. N. Bosman, St. Louis; M.
Heimann, New York.

Claire.
William Behr, Chicago; W. A. Glass-
ford, U. S. Army; W. D. Hayes, Bel-
lows Falls, Vermont; P. H. Knowlton,
Denver; W. S. Strickland, St. Louis;
A. A. Sena, Las Vegas; Thomas Hom-
er, Grand Rapids, Michigan; Mrs. W.
M. Taber, Glorieta; I. H. Rapp, Trin-
idad, Colorado; F. W. McNamara, Chi-
cago; Nettie Gordon, Latham; W. L.
Rauf, Detroit, Michigan; C. E. Beck-
ley, Chicago; J. M. Hervey, Roswell;
John Clapper, Denver; R. E. Tall-
madge, Chicago; Earl Beckham, Wil-
liam White, Burton, Kansas; George
Warren, John W. Allison, Topeka,
Kansas.

Normandie.
M. M. Barber, Denver; Fred W.
Miller, Moriarty; O. D. Cheatham, Las
Vegas; Nicolas M. Ortiz, Cow Springs;
Miles Smith, Carrie Smith, Newkirk,
Oklahoma.

Coronado.
H. L. Aranda, San Pedro.

DeWitt's Little Early Risers are
good for any one who needs a pill.
Sold by Ireland Pharmacy Company.



To Denver, Colorado Springs and
Pueblo, Colorado, and Return.
To Denver and return, \$21.10.
To Colorado Springs and return,
\$18.15.

To Pueblo and return, \$16.35.
On sale until September 30, 1907.
Final return, October 31, 1907.

Stop-overs allowed at and east of
Pueblo.

Summer Tourist Rates to Chicago and
St. Louis and Return.

To Chicago and return, \$54.75.
To St. Louis and return, \$48.10.
On sale daily until September 30,
1907. Final return limit October 31,
1907.

Los Angeles and San Francisco, Cali-
fornia, and Return, Tuesdays,
Thursdays and Saturdays.

On sale until September 30, 1907.
To Los Angeles and return, \$41.90.
To San Francisco and return, \$51.90.
Final return limit November 30,
1907. Stop-overs allowed anywhere
west of Barstow, California. Contin-
uous passage up to Barstow.

Jamestown Exposition, Norfolk, Vir-
ginia, April 26 to Nov 30, 1907.

Season ticket.....\$88.25
Sixty-day ticket.....\$73.60
Fifteen-day ticket.....\$57.25
On sale until September 30, 1907.
Final return limit on all tickets ex-
cept 15-day tickets, Nov. 30, 1907; 15-
day ticket Nov. 20, 1907.

SEMI-ANNUAL CONFERENCE
OF THE MORMON CHURCH

Salt Lake City, Utah, October 4 to
6, 1907, \$30 from Santa Fe to Salt
Lake City, Utah, and return; on sale
September 28th to October 1st inclu-
sive, final return limit sixty days from
date of sale; stop over on return trip
within final limit.

SECOND CLASS COLONIST
RATES TO CALIFORNIA

On sale daily September 1st to Oc-
tober 31st, 1907. One-way second
class colonist tickets to Los Angeles,
San Francisco, San Diego and all
other California points en route to the
above points; rate \$25. Similar low
rates to the Northwest. Call and fig-
ure with me.

NEW MEXICO TERRITORIAL FAIR.
Albuquerque, N. M., October 7th to
12th, 1907.

For the above occasion the Santa Fe
will sell tickets from Santa Fe to Al-
buquerque and return for \$3.45. Tick-
ets on sale from October 5th to 12th
inclusive. Final return limit on all
tickets October 14th, 1907.

Socorro County Fair, Sept. 28-30th, 07.
For the above occasion the Santa Fe
will sell tickets to Socorro and re-
turn for \$7.75. On sale Sept., 27th to
30th, inclusive. Final return limit
October 1st, 07.

American Royal Live Stock Show,
Kansas City, Oct. 14-19th, 07.

For the above occasion the Santa Fe
will sell tickets to Kansas City and
return for \$35.75. On sale October
12th to 16th, inclusive. Final return
limit, October 21st, 07.

G. H. DONART,
Agent A. T. & S. F. Ry.

Chamberlain's Cough Remedy One of
the Best on the Market.

For many years Chamberlain's
Cough Remedy has constantly gained
in favor and popularity until it is now
one of the most staple medicines in
use and has an enormous sale. It is
intended especially for acute throat
and lung diseases, such as coughs,
colds and croup, and can always be
depended upon. It is pleasant and safe
to take and is undoubtedly the best in
the market for the purposes for which
it is intended. Sold by all druggists.

The New Mexican Printing Com-
pany is prepared to furnish cards de-
visite for ladies or gentlemen on
short notice, in first class style at
reasonable prices, either engraved or
printed. Call on the New Mexican

FRATERNAL SOCIETIES.

MASONIC.

Montezuma Lodge, No.
1, A. F. & A. M. Regu-
lar communication first
Monday of each month
at Masonic Hall at
7:30 p. m.

R. H. HANNA, W. M.
ALAN R. McCORD, Sec'y.

Santa Fe Chapter, No.
1, R. A. M. Regu-
lar convocation second
Monday of each month
at Masonic Hall at
7:30 p. m.

S. SPITZ, H. P.
ARTHUR SELIGMAN, Sec'y.

Santa Fe Commandery No.
1, K. T. Regular convoca-
tion second Saturday in each
month at Masonic Hall;
7:30 p. m. C. J. CRANDALL, E. C.
H. F. STEPHENS, Recorder.

Santa Fe Lodge of Perfection No. 1,
14th degree, Ancient and Accepted
Scottish Rite of Free Masonry meets
on the third Saturday of each month
at 7:30 o'clock in the evening in
Masonic Hall, south side of Plaza.
Visiting Scottish Rite Masons are cor-
dially invited to attend.

CHARLES A. WHEELON, 32,
Venerable Master.
HENRY F. STEPHENS, 14, Sec.

I. O. O. F.

Santa Fe Lodge, No. 2, I. O. O. F.,
meets every Thursday evening in Odd
Fellows' Hall, San Francisco Street.
Visiting brothers welcome.

MAX KALTER, N. G.
LEO HERSCH, V. G.
DAVID L. MILLER, Sec'y.

B. P. O. E.

Santa Fe Lodge, No. 460, B. P. O. E.,
holds its regular session on the second
and fourth Wednesdays of each month.
Visiting brothers are invited and wel-
come.

R. H. HANNA, E. R.
J. D. SENA, Sec'y.

FRATERNAL UNION.

Santa Fe Lodge, No. 259, Fraternal
Union of America. Regular meetings
first and third Mondays in each month
at 8 o'clock p. m., Odd Fellows' Hall,
San Francisco Street. Visiting Frater-
ners welcome.

M. E. ORTIZ, Fraternal Master.
GREGORIO RAEI, Treas.
DAVID GONZALES, Sec'y.

DeWitt's Carbolicized Witch Hazel
Salve is good for boils, burns, cuts,
scalds and skin diseases. It is es-
pecially good for piles. Sold by Ire-
land Pharmacy Company.

"BOOTH'S FRESH OYSTERS."
Black Bass, Lake Trout, Perch,
Salmon, Silver Herring, Bullheads,
Frog's Legs, Lake Trout, Lobsters and
Shrimp can be found only at the Bon
Ton Restaurant, where they can cook
just to your taste.

Nearly all Cough Cures, especially
those that contain opiates, are consti-
pating. Kennedy's Laxative Cough
Syrup contains no opiates and acts
gently on the bowels. Pleasant to
take. Sold by Ireland Pharmacy Com-
pany.

J. W. STOCKARD,
Manager Automobile Line.

TO AND FROM ROSWELL.
Connection made with Automobile
Line at Torrance for Roswell daily.
Automobile leaves Torrance for Ros-
well at 4 a. m., and arrives at Roswell
at 12 noon. Automobile leave Ros-
well for Torrance at 1 p. m., and ar-
rives at Torrance at 10 p. m. The fare
between Santa Fe and Torrance is
\$5.80 and between Torrance and Ros-
well \$10. Reserve seats or auto-
mobile by wire.

TO AND FROM ROSWELL.
Connection made with Automobile
Line at Torrance for Roswell daily.
Automobile leaves Torrance for Ros-
well at 4 a. m., and arrives at Roswell
at 12 noon. Automobile leave Ros-
well for Torrance at 1 p. m., and ar-
rives at Torrance at 10 p. m. The fare
between Santa Fe and Torrance is
\$5.80 and between Torrance and Ros-
well \$10. Reserve seats or auto-
mobile by wire.

J. W. STOCKARD,
Manager Automobile Line.

TO AND FROM ROSWELL.
Connection made with Automobile
Line at Torrance for Roswell daily.
Automobile leaves Torrance for Ros-
well at 4 a. m., and arrives at Roswell
at 12 noon. Automobile leave Ros-
well for Torrance at 1 p. m., and ar-
rives at Torrance at 10 p. m. The fare
between Santa Fe and Torrance is
\$5.80 and between Torrance and Ros-
well \$10. Reserve seats or auto-
mobile by wire.

J. W. STOCKARD,
Manager Automobile Line.

TO AND FROM ROSWELL.
Connection made with Automobile
Line at Torrance for Roswell daily.
Automobile leaves Torrance for Ros-
well at 4 a. m., and arrives at Roswell
at 12 noon. Automobile leave Ros-
well for Torrance at 1 p. m., and ar-
rives at Torrance at 10 p. m. The fare
between Santa Fe and Torrance is
\$5.80 and between Torrance and Ros-
well \$10. Reserve seats or auto-
mobile by wire.

J. W. STOCKARD,
Manager Automobile Line.

TO AND FROM ROSWELL.
Connection made with Automobile
Line at Torrance for Roswell daily.
Automobile leaves Torrance for Ros-
well at 4 a. m., and arrives at Roswell
at 12 noon. Automobile leave Ros-
well for Torrance at 1 p. m., and ar-
rives at Torrance at 10 p. m. The fare
between Santa Fe and Torrance is
\$5.80 and between Torrance and Ros-
well \$10. Reserve seats or auto-
mobile by wire.

J. W. STOCKARD,
Manager Automobile Line.

TO AND FROM ROSWELL.
Connection made with Automobile
Line at Torrance for Roswell daily.
Automobile leaves Torrance for Ros-
well at 4 a. m., and arrives at Roswell
at 12 noon. Automobile leave Ros-
well for Torrance at 1 p. m., and ar-
rives at Torrance at 10 p. m. The fare
between Santa Fe and Torrance is
\$5.80 and between Torrance and Ros-
well \$10. Reserve seats or auto-
mobile by wire.

J. W. STOCKARD,
Manager Automobile Line.

TO AND FROM ROSWELL.
Connection made with Automobile
Line at Torrance for Roswell daily.
Automobile leaves Torrance for Ros-
well at 4 a. m., and arrives at Roswell
at 12 noon. Automobile leave Ros-
well for Torrance at 1 p. m., and ar-
rives at Torrance at 10 p. m. The fare
between Santa Fe and Torrance is
\$5.80 and between Torrance and Ros-
well \$10. Reserve seats or auto-
mobile by wire.

J. W. STOCKARD,
Manager Automobile Line.

TO AND FROM ROSWELL.
Connection made with Automobile
Line at Torrance for Roswell daily.
Automobile leaves Torrance for Ros-
well at 4 a. m., and arrives at Roswell
at 12 noon. Automobile leave Ros-
well for Torrance at 1 p. m., and ar-
rives at Torrance at 10 p. m. The fare
between Santa Fe and Torrance is
\$5.80 and between Torrance and Ros-
well \$10. Reserve seats or auto-
mobile by wire.

J. W. STOCKARD,
Manager Automobile Line.

TO AND FROM ROSWELL.
Connection made with Automobile
Line at Torrance for Roswell daily.
Automobile leaves Torrance for Ros-
well at 4 a. m., and arrives at Roswell
at 12 noon. Automobile leave Ros-
well for Torrance at 1 p. m., and ar-
rives at Torrance at 10 p. m. The fare
between Santa Fe and Torrance is
\$5.80 and between Torrance and Ros-
well \$10. Reserve seats or auto-
mobile by wire.

J. W. STOCKARD,
Manager Automobile Line.

TO AND FROM ROSWELL.
Connection made with Automobile
Line at Torrance for Roswell daily.
Automobile leaves Torrance for Ros-
well at 4 a. m., and arrives at Roswell
at 12 noon. Automobile leave Ros-
well for Torrance at 1 p. m., and ar-
rives at Torrance at 10 p. m. The fare
between Santa Fe and Torrance is
\$5.80 and between Torrance and Ros-
well \$10. Reserve seats or auto-
mobile by wire.

J. W. STOCKARD,
Manager Automobile Line.

TO AND FROM ROSWELL.
Connection made with Automobile
Line at Torrance for Roswell daily.
Automobile leaves Torrance for Ros-
well at 4 a. m., and arrives at Roswell
at 12 noon. Automobile leave Ros-
well for Torrance at 1 p. m., and ar-
rives at Torrance at 10 p. m. The fare
between Santa Fe and Torrance is
\$5.80 and between Torrance and Ros-
well \$10. Reserve seats or auto-
mobile by wire.

J. W. STOCKARD,
Manager Automobile Line.

TO AND FROM ROSWELL.
Connection made with Automobile
Line at Torrance for Roswell daily.
Automobile leaves Torrance for Ros-
well at 4 a. m., and arrives at Roswell
at 12 noon. Automobile leave Ros-
well for Torrance at 1 p. m., and ar-
rives at Torrance at 10 p. m. The fare
between Santa Fe and Torrance is
\$5.80 and between Torrance and Ros-
well \$10. Reserve seats or auto-
mobile by wire.

J. W. STOCKARD,
Manager Automobile Line.

TO AND FROM ROSWELL.
Connection made with Automobile
Line at Torrance for Roswell daily.
Automobile leaves Torrance for Ros-
well at 4 a. m., and arrives at Roswell
at 12 noon. Automobile leave Ros-
well for Torrance at 1 p. m., and ar-
rives at Torrance at 10 p. m. The fare
between Santa Fe and Torrance is
\$5.80 and between Torrance and Ros-
well \$10. Reserve seats or auto-
mobile by wire.

J. W. STOCKARD,
Manager Automobile Line.

TO AND FROM ROSWELL.
Connection made with Automobile
Line at Torrance for Roswell daily.
Automobile leaves Torrance for Ros-
well at 4 a. m., and arrives at Roswell
at 12 noon. Automobile leave Ros-
well for Torrance at 1 p. m., and ar-
rives at Torrance at 10 p. m. The fare
between Santa Fe and Torrance is
\$5.80 and between Torrance and Ros-
well \$10. Reserve seats or auto-
mobile by wire.

J. W. STOCKARD,
Manager Automobile Line.

TO AND FROM ROSWELL.
Connection made with Automobile
Line at Torrance for Roswell daily.
Automobile leaves Torrance for Ros-
well at 4 a. m., and arrives at Roswell
at 12 noon. Automobile leave Ros-
well for Torrance at 1 p. m., and ar-
rives at Torrance at 10 p. m. The fare
between Santa Fe and Torrance is
\$5.80 and between Torrance and Ros-
well \$10. Reserve seats or auto-
mobile by wire.

J. W. STOCKARD,
Manager Automobile Line.

TO AND FROM ROSWELL.
Connection made with Automobile
Line at Torrance for Roswell daily.
Automobile leaves Torrance for Ros-
well at 4 a. m., and arrives at Roswell
at 12 noon. Automobile leave Ros-
well for Torrance at 1 p. m., and ar-
rives at Torrance at 10 p. m. The fare
between Santa Fe and Torrance is
\$5.80 and between Torrance and Ros-
well \$10. Reserve seats or auto-
mobile by wire.

J. W. STOCKARD,
Manager Automobile Line.

TO AND FROM ROSWELL.
Connection made with Automobile
Line at Torrance for Roswell daily.
Automobile leaves Torrance for Ros-
well at 4 a. m., and arrives at Roswell
at 12 noon. Automobile leave Ros-
well for Torrance at 1 p. m., and ar-
rives at Torrance at 10 p. m. The fare
between Santa Fe and Torrance is
\$5.80 and between Torrance and Ros-
well \$10. Reserve seats or auto-
mobile by wire.

J. W. STOCKARD,
Manager Automobile Line.

TO AND FROM ROSWELL.
Connection made with Automobile
Line at Torrance for Roswell daily.
Automobile leaves Torrance for Ros-
well at 4 a. m., and arrives at Roswell
at 12 noon. Automobile leave Ros-
well for Torrance at 1 p. m., and ar-
rives at Torrance at 10 p. m. The fare
between Santa Fe and Torrance is
\$5.80 and between Torrance and Ros-
well \$10. Reserve seats or auto-
mobile by wire.

J. W. STOCKARD,
Manager Automobile Line.

TO AND FROM ROSWELL.
Connection made with Automobile
Line at Torrance for Roswell daily.
Automobile leaves Torrance for Ros-
well at 4 a. m., and arrives at Roswell
at 12 noon. Automobile leave Ros-
well for Torrance at 1 p. m., and ar-
rives at Torrance at 10 p. m. The fare
between Santa Fe and Torrance is
\$5.80 and between Torrance and Ros-
well \$10. Reserve seats or auto-
mobile by wire.

J. W. STOCKARD,
Manager Automobile Line.

TO AND FROM ROSWELL.
Connection made with Automobile
Line at Torrance for Roswell daily.
Automobile leaves Torrance for Ros-
well at 4 a. m., and arrives at Roswell
at 12 noon. Automobile leave Ros-
well for Torrance at 1 p. m., and ar-
rives at Torrance at 10 p. m. The fare
between Santa Fe and Torrance is
\$5.80 and between Torrance and Ros-
well \$10. Reserve seats or auto-
mobile by wire.

J. W. STOCKARD,
Manager Automobile Line.

TO AND FROM ROSWELL.
Connection made with Automobile
Line at Torrance for Roswell daily.
Automobile leaves Torrance for Ros-
well at 4 a. m., and arrives at Roswell
at 12 noon. Automobile leave Ros-
well for Torrance at 1 p. m., and ar-
rives at Torrance at 10 p. m. The fare
between Santa Fe and Torrance is
\$5.80 and between Torrance and Ros-
well \$10. Reserve seats or auto-
mobile by wire.

J. W. STOCKARD,
Manager Automobile Line.

TO AND FROM ROSWELL.
Connection made with Automobile
Line at Torrance for Roswell daily.
Automobile leaves Torrance for Ros-
well at 4 a. m., and arrives at Roswell
at 12 noon. Automobile leave Ros-
well for Torrance at 1 p. m., and ar-
rives at Torrance at 10 p. m. The fare
between Santa Fe and Torrance is
\$5.80 and between Torrance and Ros-
well \$10. Reserve seats or auto-
mobile by wire.

J. W. STOCKARD,
Manager Automobile Line.

TO AND FROM ROSWELL.
Connection made with Automobile
Line at Torrance for Roswell daily.
Automobile leaves Torrance for Ros-
well at 4 a. m., and arrives at Roswell
at 12 noon. Automobile leave Ros-
well for Torrance at 1 p. m., and ar-
rives at Torrance at 10 p. m. The fare
between Santa Fe and Torrance is
\$5.80 and between Torrance and Ros-
well \$10. Reserve seats or auto-
mobile by wire.

J. W. STOCKARD,
Manager Automobile Line.

TO AND FROM ROSWELL.
Connection made with Automobile
Line at Torrance for Roswell daily.
Automobile leaves Torrance for Ros-
well at 4 a. m., and arrives at Roswell
at 12 noon. Automobile leave Ros-
well for Torrance at 1 p. m., and ar-
rives at Torrance at 10 p. m. The fare
between Santa Fe and Torrance is
\$5.80 and between Torrance and Ros-
well \$10. Reserve seats or auto-
mobile by wire.

J. W. STOCKARD,
Manager Automobile Line.

TO AND FROM ROSWELL.
Connection made with Automobile
Line at Torrance for Roswell daily.
Automobile leaves Torrance for Ros-
well at 4 a. m., and arrives at Roswell
at 12 noon. Automobile leave Ros-
well for Torrance at 1 p. m., and ar-
rives at Torrance at 10 p. m. The fare
between Santa Fe and Torrance is
\$5.80 and between Torrance and Ros-
well \$10. Reserve seats or auto-
mobile by wire.

COME TO BELEN, N. M., Future Railroad Metropolis of New Mexico. Located on Belen Cut-off of Santa Fe R'y.

Belen is 31 miles south of Albuquerque, N. M., at the junction of the Main Line of the Santa Fe System—leading East and West from Chicago, Kansas City, Galveston and points East to San Francisco, Los Angeles, El Paso and Old Mexico.

1,000 business and residence lots, also 25x145 feet, laid out with broad 80- and 70-foot streets, with alleys 20 feet wide, with beautiful lake and public park and grand old shade trees; public school house, costing \$16,000; churches; large mercantile establishments; the Belen Patent Roller Mill, capacity 150 barrels daily; large winery; three hotels, Commercial Club; a population of 1,500 people; several restaurants, etc. Belen is the largest shipping point for wood, flour, wheat, wine, beans and hay in Central New Mexico. Its importance as a great commercial railroad city in the near future cannot be estimated.

The Belen Town and Improvement Company are owners of the BELEN TOWNSITE

JOHN BECKER, President.
WM. M. BERGER, Secretary.

The Belen Town and Improvement Company

ALL FAST LIMITED EXPRESS, MAIL AND FREIGHT TRAINS OF THE SANTA FE WILL GO OVER THE MAIN LINE THROUGH TO BELEN, EAST AND WEST, NORTH AND SOUTH.

The lots offered are in the center of the city, well graded (many of them improved by cultivation); no sand or gravel. We need a first-class bakery, tailor shop, shoe house, jeweler, plumbing shop, planing mill, coal and wood yard, drug store, harness shop, etc. etc.; also a first-class modern hotel.

Our prices of lots are low and terms on easy payments; title perfect; warranty deeds. One-third purchase money, cash. Two-thirds may remain on note, with mortgage as security, for one year, with 8 per cent interest thereon.

Apply at once for map and prices if you wish to secure the choicest lots.

KOEHLER MINING CAMP GROWING

Bids Fair to Be One of Largest Coal Towns in New Mexico—Fuel Supply Inexhaustible.

Koehler, N. M., Sept. 19.—This new mining camp is growing rapidly, and according to the statements of officials of the mining company, is destined to be one of the most important coal towns in New Mexico. The camp is located on the St. Louis, Rocky Mountain and Pacific Railroad, about twenty miles from Raton.

There is enough coal in sight to keep the company in active operation for a hundred years, according to the statement of experts. The camp is named after President Koehler of the American Brewing company of St. Louis, Missouri, who is also the president of the mining company.

The company is erecting many substantial buildings for the promotion of the interests of its employees. They have just finished a large two-story school building and furnished it at their own expense.

Stomach troubles, Heart and Kidney ailments, can be quickly corrected with a prescription known to druggists everywhere as Dr. Shoop's Restorative. The prompt and surprising relief which this remedy immediately brings is entirely due to its Restorative action upon the controlling nerves of the stomach, etc.

A weak Stomach, causing dyspepsia, a weak heart with palpitation or intermittent pulse, always means weak Stomach nerves or weak Heart nerves. Strengthen these inside or controlling nerves with Dr. Shoop's Restorative and see how quickly these ailments disappear. Dr. Shoop of Racine, Wis., will mail samples free. Write for them. A test will tell. Your health is certainly worth this simple trial. Sold by all druggists.

ANNUAL CONFERENCE M. E. CHURCH SOUTH.

Special to the New Mexican. Alamogordo, N. M., Sept. 19.—The annual conference of the Methodist Episcopal Church South convened here today and will hold over Sunday.

The conference includes ministers and churches of New Mexico and the southwest portion of the state of Texas. Rev. George Ward, D. D., is the presiding bishop and Rev. J. T. French, of El Paso, Texas, and Rev. B. T. James of Melrose, New Mexico, are the presiding elders.

This meeting is attended by a large number of the leaders of the church. The various denominational papers and the different boards of the church have sent their strongest men to plead the cause of the many church interests. The conference has grown very rapidly the past year, starting at the last conference with under fifty members. There are now more than sixty churches enrolled.

The meetings are being held in the Methodist Episcopal Church South.

One of the worst features of kidney trouble is that it is an insidious disease and before the victim realizes, his danger he may have a fatal malady. Take Foley's Kidney Cure at the first sign of trouble, as it corrects irregularities and prevents Bright's Disease and diabetes. For sale at Ireland's Pharmacy.

The New Mexican Printing Company is prepared to furnish cards de visite for ladies and for gentlemen on short notice in first class style at reasonable prices, either engraved or printed. Call on the New Mexican Printing Company.

Subscribe for the Daily New Mexican and get the news.



OXEN CAVALRY OF MADAGASCAR WITH PAWNEE BILL'S WILD WEST SHOW.

One of the curious exhibits of the Pawnee Bill show, which will show in Santa Fe on Saturday, is a band of the oxen cavalry of Madagascar, on the west coast of Africa. It is the strangest military organization in the world, and makes a spectacle never forgotten in maneuvers of wide and skillful variety.

Hon. J. G. Gallitine, governor-general of Madagascar, instituted this innovation in warfare, and the members of the corps secured by Pawnee Bill are held by governmental permission. They are known as the Sakalavas and are the most warlike tribesmen in the country, where no horse can be obtained for love or money. These semi-savage soldiers ride barefooted without stirrups. The oxen are neither slow nor easily frightened, and

possess great fortitude and endurance. Lacking fear in battle and advancing with horns pointed forward, they create havoc among horse cavalry.

The exhibition drill given for the Pawnee Bill audiences thrills with excitement. The band of natives, mounted on their oxen, stand at attention in two companies about one hundred feet apart. At a given signal they rush at each other, the oxen with their heads lowered ready to strike, the natives with their spears grasped firmly and eyes fixed on the oncoming "foe." They come to a sudden halt about three feet apart, wheel and canter back to position, where they right-about-face and make ready for the second attack. The natives mount, remount, vault and wheel with ease and alacrity.

MAN HIT BY LIMITED ESCAPES SERIOUS INJURY.

Raton, N. M., Sept. 19.—Anastacio Gonzales, an aged resident of this city was struck by the California limited as it pulled into the station here. He did not see the approaching train and the pilot of the engine struck him, throwing him a distance of about fifty feet. He was picked up unconscious and at first it was thought he had been fatally injured. Later, however, he regained his senses, and is up and about again.

Healthy kidneys filter the impurities from the blood, and unless they do this good health is impossible. Foley's Kidney Cure makes sound kidneys and will positively cure all forms of kidney and bladder disease. It strengthens the whole system. For sale by the Ireland Pharmacy.

(Homestead Entry No. 7269.) Department of the Interior, Land Office at Santa Fe, N. M., September 16, 1907.

Notice is hereby given that Julio Roybal of Pecos, N. M., has filed notice of his intention to make final five-year proof in support of his claim, viz: Homestead Entry No. 7269, made October 6, 1902, for the SW 1-4 Section 22, Township 17 N., Range 12 E., and that said proof will be made before the Register and Receiver, at Santa Fe, N. M., on October 23, 1907. He names the following witnesses to prove his continuous residence upon, and cultivation of, the land, viz: Cresencio Roybal, Epifanio Gonzales, Romulo Roybal, Simon Viveas, all of Pecos, N. M.

MANUEL R. OTERO, Register.

Subscribe for the Daily New Mexican and get the news.

The New Mexican Printing Company keeps on hand a large assortment of blanks are carefully prepared in accordance with statute and will be found satisfactory. Reductions in prices are made to those who purchase in quantity. Blanks necessary in making homestead entries, or final proof thereon, desert land entries or final proof thereon, coal declaratory statements and in securing mining claims also kept in stock and for sale by the New Mexican Printing Company.

When in need of anything in the printing line, such as wedding cards, invitations, briefs, call on the New Mexican Printing Company, where all work is guaranteed.

DR. DIAZ' SANITARIUM

Cor. Water St. and Gaspar Ave Santa Fe, New Mexico. Splendid Accommodations. Special attention given Children's Diseases and Confinement Cases. Terms: \$50 for two weeks, including room, board, nursing and medical attention. Room and board, additional, \$9 per week. Cuisine Unsurpassed. All appliances and instruments for surgical cases. No Tubercular Patients admitted.

APPLY FOR TERMS.

"A SPECIAL"

For sick folks. Your attention is called to the fact that our whiskey is bought in bond and purity is absolutely guaranteed. Telephone 94. THE CLUB.

WANTS

WANTED—A cook. Apply to Mrs. R. J. Palen, 231 Palace avenue.

FOR RENT—Furnished rooms. Single and for light housekeeping. 317 San Francisco St. F. Andrews.

WANTED—Girl to do general housework. Apply, 137 East Palace avenue, Saturday.

WANTED—A girl to do general housework in small family. Apply to Mrs. Max Frost, 252 Palace Avenue.

(Homestead Entry No. 7143.) Department of the Interior, Land Office at Santa Fe, N. M., August 19, 1907.

Notice is hereby given that Pulidor Olivas, of Cuba, N. M., has filed notice of his intention to make final five year proof in support of his claim, viz: Homestead entry No. 7143, made July 28, 1902, for the N 1-2 NE 1-4 section 27, W 1-2 SE 1-4 section 22, Township 21 N, Range 2 E, and that said proof will be made before H. W. S. Otero, United States court commissioner, at Albuquerque, N. M., on October 5, 1907.

He names the following witnesses to prove his continuous residence upon and cultivation of the land, viz: Espridion Olivas, of Coyote, N. M., Jesus Maria Sanchez, of Espanola, N. M., Flores Vigil, of Coyote, N. M., Placido Archuleta, of Coyote, N. M. MANUEL R. OTERO, Register.

TIMETABLE ALL LINES.

Entering and Leaving Santa Fe—Compiled According to Schedule of Trains Now in Effect. SANTA FE CENTRAL. No. 1—Southbound leaves Santa Fe 1:40 p. m. No. 2—Northbound arrives Santa Fe 5:28 p. m.

DENVER & RIO GRANDE. No. 426—Eastbound leaves Santa Fe 11 a. m. No. 425—Westbound arrives Santa Fe 4 p. m.

ATCHISON, TOPEKA & SANTA FE.

Lamy Branch. Arrive at Santa Fe Station. No. 721 11:10 a. m. No. 723 6:50 p. m. No. 725 10:55 p. m.

Depart From Santa Fe Station. No. 720 8:25 a. m. No. 722 4:20 p. m. No. 724 7:40 p. m.

No. 720 connects with Numbers 10 and 2 east, and No. 3 limited, west at Lamy.

No. 722 connects with No. 1 west at Lamy. No. 1 carries El Paso sleeper. No. 724 connects with No. 7 and 9, westbound, and 4 and 8 eastbound.

Main Line Via Lamy. No. 1 stops at all stations. No. 7 will stop at all stations, Lamy to Albuquerque to discharge passengers from Santa Fe.

No. 721 leaves Lamy at 10:10 a. m. and will not wait for No. 2 from the west at Lamy, waiting only for No. 10 from the south and No. 3 from the east.

The New Mexican Printing Company has the largest, most modern, and best arranged book bindery in the Southwest. The best kind of work only turned out. Prices very low and satisfaction guaranteed. If you have books to bind, whether the largest ledger or journal, or magazines and pamphlets or need any other binding call for figures, samples and prices of the New Mexican Printing Company. The company is anxious to serve you and will give you satisfactory rates.

Roswell Automobile Co.

Mail and Passenger Line between Roswell, N. M., and Torrance, N. M. Running time between the two points five hours, meals furnished at all trains on the Rock Island and Santa Fe Central Railways. Excursion parties accommodated by notifying the company two days in advance.

Agents for the Buick Automobiles, one of the best known and Best Machines for all purposes on the market. Two of the best known and best machines for all purposes on the market. Address all communications and inquiries to the

Roswell Automobile Co.

Roswell, New Mexico.

Wells Fargo & Company

Express General Express Forwarders

All Parts of the World.

Save Money and Inconvenience by Purchasing Wells Fargo DOMESTIC MONEY ORDERS, TRAVELERS' MONEY ORDERS, FOREIGN MONEY ORDERS. Payable Throughout the United States, Canada, Mexico and all Foreign Countries

REMITTANCES SENT BY TELEGRAPH.

J. D. BARNES, Agent

Rubber Stamps

WHEN YOU FIND YOURSELF WRITING THE SAME THING FREQUENTLY IN THE COURSE OF YOUR BUSINESS, REMEMBER A RUBBER STAMP WILL SAVE YOU A GREAT DEAL OF TIME. BUSY PEOPLE ARE USING RUBBER STAMPS MORE NOW THAN EVER BEFORE BECAUSE THEY SAVE TIME, AND TIME IS MONEY THESE DAYS

PRICE-LIST

One-line Stamp, not over 2½ inches long.....15c
Each additional line on same stamp, 10c.
One-line Stamp, over 2½ and not over 3½ inches long...20c
Each additional line on same stamp, 15c.
One-line Stamp, over 3½ and not over 5 inches long...25c
Each additional line on same stamp, 20c.
One-line Stamp, over 5 inches long, per inch.....35c
Each additional line, same price.
(Curved lines on Stamp count as two lines.)
Borders of all shapes, under 3 inches long way, 25c extra.
Larger sizes at proportionate prices.
Where type used is over one-half inch in size, we charge for one line for each one-half inch or fraction.
DATES, ETC.

Local Dater—any town and date for ten years.....\$1.00
Ledger Dater—month, day and year in ¼-inch..... 50
Regular line Dater..... 35
Defiance Model Band Dater..... 1.50
Fac-Simile Signatures, Rubber Stamp and Wood Cut. 1.50
Pearl Check Protector..... 1.00

SELF-INKING STAMP PADS.

1½x2½, 10c; 2x3½, 15c; 2½x3½, 25c; 3½x4½, 35c; 4½x6½, 50c; 4½x7½, 75c.

FOR TYPE SPECIMENS ADDRESS

NEW MEXICAN PRINTING CO.

SANTA FE, NEW MEXICO

GROCERS, BAKERS, BUTCHERS!**CARTWRIGHT-DAVIS CO.**

No. 250 San Francisco Street
Grocery Telephone No. 4. Meat Market. Telephone No. 49.

FRESH TOMATOES.

We are offering a fine lot of Tomatoes these days. Red, ripe and well flavored. Per pound 5c. Per case, 27 pounds, \$1.25.

CANTALOUPE.

Rocky Ford variety of Cantaloupes are in good supply. Each, 5c and 7-12c. Both pony and standard crates at low prices.

SWEET CORN.

Genuine Sweet Corn, native grown, fresh every day. This is fine.

FRESH VEGETABLES.

Our stock of fresh Vegetables contains about everything the market affords. Virginia Sweet Potatoes, Native Lettuce, Radishes, Young Onions, Beans, etc. Two big Cucumbers for 5c. Celery, per stalk, 5c.

BAKERY GOODS.

Our cream and home-made Breads taste like the real thing, the kind mother used to make. All kinds, including Rye, Vienna, French and Graham, 5c per loaf. Boston Brown and Poppy Seed Twist on Saturdays at 10c. Our popular price Fruit Cake at 25c per pound is a winner. Try our Vanilla Wafers and Almond Macaroons. Jelly Rolls, 10c.

PRETZELS.

The German cracker, the Pretzel, is a most healthful article of diet. Each one is dipped in lye and baked over

an open fire on wire screening. This insures that delightful crispness so seldom found. We have two kinds, German and Italian. The latter contains caraway seed. Per pound, 15c.

MEAT MARKET.

We are now shipping No. 1 Kansas City steer beef. This is the fullest, finest flavored beef known. We are also receiving Kansas City pork, mutton and veal. Try our fresh meat. New manager in the Meat Market. He knows his business and will try to please you if you will give him the opportunity. If you want the very best meats at the same price, give us a trial. Fish and Oysters every Friday. Springs and Hens all the time.

CANNED FRUITS.

We are already offering new California Canned Fruits. Cheaper than the fresh this year. New Preserves and Jams. Several brands to choose from. All are guaranteed to comply with the National Pure Food Law, and to be properly labeled as to contents.

IMPORTED GOODS.

We buy nearly all our stocks of imported delicacies direct from the New York Importers. We own them at right prices. Carry liberal stocks of the best brands, and can therefore supply your table to the best advantage, both as to price and quality.

CARTWRIGHT-DAVIS COMPANY**DUDROW & MONTENIE****FUNERAL DIRECTORS
AND
EMBALMERS**

All Kinds of Picture Framing

DUDROW'S OFFICE BUILDING. Day Phone 35

Residence: Upper Palace Avenue (Amado Chaves House), Nights and Sundays. Telephone, No. 142.

COAL AND WOOD

Cerrillos Lump,
Monero Lump,
Anthracite Mixed.

Anthracite Furnace,
Smithing Coal,
Sawed Wood and Kindling.

CAPITAL COAL YARD.

Phone No. 85. Office Garfield Avenue, near A., T. and S. F. Depot.

DIGNEO & NAPOLEON,

**WHOLESALE & RETAIL
WINES, LIQUORS AND CIGARS**

Sole Agents for Pabst's Beer,

Try a Glass of the Famous Pabst Beer.
SANTA FE, N. M.,

(PHONE NO. 6.)

(PHONE NO. 6.)

IT DOESN'T COST ANYTHING

TO COME IN AND LOOK AROUND. VISITORS ARE ALWAYS WELCOME WHETHER THEY BUY OR NOT.

The Biggest Curio Store in the West

MEXICAN AND INDIAN WARES OF ALL DESCRIPTIONS AT BARGAIN COUNTER PRICES. ELEGANT STOCK OF NAVAJO BLANKETS AND BASKETS JUST RECEIVED. FINEST LINE OF MEXICAN DRAWN WORK IN CITY.

THIS IS THE HOUSE FROM WHICH THE GENUINE INDIAN AND MEXICAN CURIOS COME.

You Can't Miss the Place

THE ORIGINAL OLD CURIO STORE

J. S. CANDELARIO, THE CURIO MAN

Look for Old Cart on Top of Building. 301-303 San Francisco Street.

Personal Mention.

(Continued From Page Four)

Mr. and Mrs. F. E. Nuding went to Albuquerque yesterday to visit Mrs. Nuding's parents, Mr. and Mrs. W. H. Hahn.

John Waterworth, engaged in mining on the Upper Pecos, spent the day in the city on business. He is domiciled at the Cowles Mining Camp.

E. P. Holcombe, a special agent of the general land office who is assisting the federal land investigations now in progress in New Mexico, left this afternoon for Silver City.

U. S. District Attorney W. H. H. Llewellyn, who was here on business connected with his office yesterday, went to Albuquerque last night where the U. S. court for the Second Judicial district is in session.

Attorney General Albert B. Fall left this afternoon for Silver City to be present tomorrow at the hearing of the bill of exceptions filed by the Territory in the case of H. O. Bursum vs. the Territory of New Mexico for a judicial settlement of his accounts containing the convicts' earnings' fund, while superintendent of the Territorial penitentiary.

Traveling Auditor Charles V. Sanford, who prepared the report as referee in the Bursum case involving the financial accounts containing the convicts' earnings' fund of the Territorial penitentiary under the superintendency of H. O. Bursum, left this afternoon for Silver City to be present at the hearing on the bill of exceptions which comes up there tomorrow before Judge Frank W. Parker.

Willard S. Strickler, vice-president and cashier of the Bank of Commerce of Albuquerque, M. W. Flourney, vice-president of the First National Bank, O. N. Marron, president of the State National Bank and J. W. Wade, manager of the American Lumber company, left Albuquerque last evening for Chicago and New York. It is understood they go on business connected with the building of the Albuquerque Eastern Railroad from Moriarty to Albuquerque.

Minor City Topics.

(Continued from Page Five.)

Train report at 3:30: Santa Fe train No. 1 four hours late and train leaving for Lamy at 4 o'clock will not go out until 7:40 this evening. All other Santa Fe trains reported on time. Denver and Rio Grande reported four hours late and Santa Fe Central 30 minutes late.

SOLD LIQUOR WITHOUT LICENSE

Aranda and Stewart Pleaded Guilty and Were Fined—Ricardo Alarid Case Up for Rehearing.

Territorial District Court for Santa Fe county re-convened this morning at 10 o'clock, Judge John R. McFie presiding, and Clerk Francis C. Wilson at his desk. The Territory was represented by District Attorney R. C. Gortner and Assistant District Attorney C. C. Catron, also by Judge N. B. Laughlin.

Hilario Aranda and Albert Stewart who were charged with selling liquor without a license, and also with a violation of the Sunday closing law were both arraigned this morning and entered formal pleas of guilty. Aranda also pleaded guilty to the indictment charging him with permitting gambling without a license.

Aranda was fined \$100 and costs for the last named of the three offenses, half of which was suspended pending good behavior. He was also fined \$25 for selling liquor without a license. The charge of violating the Sunday closing law was dismissed with costs.

Stewart was fined \$50 and costs on the charge of selling liquor without a license, and half of this fine was suspended during good behavior. The case against him for violating the Sunday closing law was dismissed with costs.

The forepart of the afternoon today was devoted to securing a jury for the retrial of the case of the Territory versus Ricardo Alarid which resulted in a mistrial at the last term of court. Alarid is charged with assault with intent to kill on Camilo Martinez, a former policeman, since deceased. Attorney A. B. Renahan appears for the defendant while District Attorney Gortner is being assisted in the prosecution by Judge N. B. Laughlin.

In the case of the Territory versus Donaciona Rael which was tried yesterday a verdict was returned late in the afternoon finding the defendant guilty of assault and battery.

**FROST PREDICTED
IN NORTH PORTION**

Fair and Colder Weather Tonight and Friday, Is Forecast Today For New Mexico.

Fair and colder weather tonight and Friday with frost in the north portion tonight is the official forecast for New Mexico announced today by the local U. S. Weather bureau.

In Santa Fe the temperature at six o'clock this morning was 74 degrees at 1:50 p. m., and the minimum temperature 51 degrees at 5:40 a. m., the mean temperature for the day being 62 per cent. The relative humidity yesterday was 86 per cent and the precipitation .09 inch.

Santa Fe PAWNEE BILL'S WILD WEST

THE GREAT TRAIN ROBBERY FAR EAST

One Day Only SATURDAY Sept 21

Performances Afternoon and Evening

Coming Here in the Zenith of Its Glory; Coming with Every Honor New York and Europe Can Bestow; Coming with a Twenty-One Years' Record of Repeated, Uninterrupted Success. The Whole World Laid Under Contribution in Order to Present an Exhibition in Keeping with the Name and Fame of Its Owner.

**THE GREAT TRAIN ROBBERY**

747-Performances in New York City=747

First Presentation Under Canvas of the One Supreme Sensational "Thriller." Without Precedent or Parallel. Arthur Voegtlin's N. Y. Hippodrome Conception.

Employing an Engine and Train of Cars

A Mining Camp, with Streets, Hotels and Dance Halls. Passenger and Treasure-Laden Express Car Plundered by Desperadoes. Chase by Sheriff and Posse Over Mountains and Prairie. Deadly Running Combat.

Mysticism, Magic and Marvels of the Orient

Hindu jugglers and snake charmers, enchanting Nautch dancing girls, venerable high priests, wandering tribes of Bedouins, skilled warriors, daring Sheiks, fearless horsemen, soothsayers, witch doctors, howling and dancing Devils, together with their superb Arabian, Moorish and Algerian horses, native, gorgeous costumes, war weapons and trappings, ornaments and religious articles, musical instruments of strange tones and curious designs, domestic utensils, desert tents of animal skins, camp and traveling equipage and other old and barbaric accoutrements, paraphernalia and appurtenances. A true and perfect panorama of Eastern life and customs.

A Living Page from Frontier History

Vaqueros, gauchos, cowboys, cowgirls, tribes of savage Indians, six hundred horses, herds of buffaloes, the cavalry of nations, hundreds of representative experts, veterans and celebrities of border life, battle scenes, equestrian evolutions, riding rivalries from Cossack to Comanche, crack shots led by Pawnee Bill, scouts, trappers, pioneers of the wilderness, fearless rough riders. Performing in an arena of battle-size proportions the sports, games, contests, pastimes, battles and gladiatorial combats of past days.

Performances TWICE DAILY at 2 and 8 P.M. ADMISSION 50c CHILDREN 25c

Grand Spectacular STREET PARADE in the Morning

Reserved Seats on Sale at Regular Prices on Day of Exhibition at The Ireland Pharmacy.

**INSTITUTE FOR BLIND
OPENS AUSPICIOUSLY.**

Special to the New Mexican.

Alamogordo, N. M., Sept. 19.—The present term of the New Mexican Institute for the Blind has opened under very auspicious conditions. Superintendent S. H. Gill now has twenty-two pupils, boys and girls, in the institute. He hopes to raise the number to thirty before long.

The Institute is in a very fine condition and bids fair to do great good this year. Superintendent Gill has received notice of the whereabouts of several blind children and will shortly visit the localities where they live for the purpose of inducing their parents to send them to the Institute. Most of these are of native descent.

**ROCKEFELLER OWNED
BIG BLOCK OF STOCK.**

New York, Sept. 19.—John D. Rockefeller owned more than a fourth interest in the old Standard Oil Company trust, according to the testimony of W. H. Tilford, in the federal proceedings against the Standard Oil Company of New Jersey, here today. Tilford testified that it was correct that Rockefeller owned 256,854 shares out of a total of 972,000 shares of Standard Oil trust certificates in 1892, and later an assignment was made transferring to Rockefeller his proportionate interest in stocks of subsidiary companies.

**NEW YORK KIDNAPPING
CASE IS SOLVED.**

New York, Sept. 19.—An Italian kidnapping case that has puzzled the police for a month has been solved. Nicola Temase, the four-year-old son of a boot-black in East Houston street, being found in front of a house in Fifth Avenue. The boy said a man named Teny had him and two little girls and another boy away on a long trolley ride and told him to wait on the street until he came back. Nicolas' father got many threatening letters before the boy disappeared on August 19.

**TO SOLVE FREIGHT
SITUATION OF COUNTRY.**

Chicago, Sept. 19.—A long step forward in simplifying the freight situation throughout the country was taken yesterday at a meeting of the Central Freight Association. A joint committee composed of representatives from three classified territories decided on unification and within thirty days a new committee will be appointed to undertake the solution of this perplexing problem.

Try a New Mexican Want Ad.

THE IRELAND PHARMACY

PURE DRUGS AND TOILET ARTICLES

Fresh Line of Huyler's and
Gunthers Candies Just
Arrived.

Phone 41

Phone 41

**ROCKEFELLER GIVES UP
LEADERSHIP OF BIBLE CLASS.**

New York, Sept. 19.—John D. Rockefeller, Jr., will cease to be leader of the Young Men's Bible class of the Fifth Avenue Baptist church, October 1st. He has resigned and his resignation has been accepted by the executive committee of the class. Increasing demands of business and fear of a recurrence of ill health are the reasons given by him for retirement.

**FATAL STABBING
AT SANTA RITA.**

Silver City, N. M., Sept. 19.—Louis Torres stabbed another Mexican, Juan Duran, at Santa Rita, Sunday morning, and fatally wounded him. He died a very short time afterwards.

Both the men were newcomers in the camp. The officers captured Torres and he was brought to Silver City and placed in jail.

**TO DEDICATE NEW LODGE
HALL AT MAGDALENA.**

Magdalena, N. M., Sept. 19.—Magdalena's new and handsome Knights of Pythias hall will be dedicated tonight with imposing ceremonies. Knights from various parts of the territory will be present and the Ellis orchestra of Albuquerque, will play at the opening. Following the dedication ceremonies and the regular business meeting, a ball will be held.

**BABY IS KILLED
IN RUNAWAY.**

Roswell, N. M., Sept. 19.—While helping his wife and baby out of a buggy the horse of Clarence W. Davidson took fright and ran away. Mrs. Davidson in trying to jump from the buggy was caught in the wheels and thrown violently to the ground with her 11-months-old babe in her arms. The child's skull was crushed.

**BURSUM VERSUS
THE TERRITORY.**

(Continued From First Page)

understood if there is anybody who has any earthly interest in this case or can throw any light upon it he is urged to be present. If Mr. McHarg has any questions he wants to propound I would be glad to have him do so, either in his capacity as a private citizen or as special assistant attorney general of the United States."

Judge Fall stated he had notified E. P. Holcombe, special agent of the general land office to the same effect as Mr. McHarg, and had also served notices giving the date and place of hearing on Neill B. Field, counsel for the Colorado Title and Trust Company, which has an interest in the case because McMahon was connected with it, while investigating the prison books, and also H. M. Dougherty, of Socorro, attorney for Mr. Bursum.

**SUB-MARINE ERUPTIONS
KILL THOUSANDS OF FISH.**

Progreso, Mex., Sept. 19.—The entire Yucatan coast, ten miles seaward, is strewn with dead fish, presumably as a result of sub-marine eruptions.

MARKET REPORT.**MONEYS AND METALS**

New York, Sept. 19.—Money on call steady 2@4 per cent. Prime mercantile paper 2@7.

New York, Sept. 19.—Lead weak \$4.60@4.75. Lake copper weak 15@15.50. Silver 67 3/4.

WOOL MARKET.

St. Louis, Sept. 19.—Wool Steady. Territory and western mediums, 20@25; fine medium, 19@23; fine, 17@20.

Butchers' shipping certificates, such as are required by law, printed in blank form by the New Mexican Printing Company.