

8-1-1907

## Santa Fe New Mexican, 08-01-1907

New Mexican Printing Company

Follow this and additional works at: [https://digitalrepository.unm.edu/sfnm\\_news](https://digitalrepository.unm.edu/sfnm_news)

---

### Recommended Citation

New Mexican Printing Company. "Santa Fe New Mexican, 08-01-1907." (1907). [https://digitalrepository.unm.edu/sfnm\\_news/6691](https://digitalrepository.unm.edu/sfnm_news/6691)

This Newspaper is brought to you for free and open access by the New Mexico Historical Newspapers at UNM Digital Repository. It has been accepted for inclusion in Santa Fe New Mexican, 1883-1913 by an authorized administrator of UNM Digital Repository. For more information, please contact [disc@unm.edu](mailto:disc@unm.edu).



## NEW CLERK HAILS FROM WASHINGTON

**Francis C. Wilson to Succeed A. M. Bergere**

### ACTING AS DEPUTY NOW

**E. P. Holcombe Will Remain in Charge of District Court Clerk's Office.**

Francis C. Wilson, of Washington, D. C., formerly connected with the Department of Commerce and Labor, will be the new clerk of the First Judicial District Court, filling the vacancy caused by the pre-emptory dismissal of A. M. Bergere. He arrived in the city yesterday but will not enter upon the discharge of his duties as clerk until August 10. E. P. Holcombe who was appointed as temporary clerk will remain in charge of the office until that date.

Judge John R. McFie when asked yesterday regarding Mr. Bergere's successor declined to discuss the matter but today when approached on the subject confirmed the report of the appointment of Mr. Wilson. Developments during the past few days indicate that the investigation of the records and accounts of the clerk's office was instituted with a view to Mr. Bergere's removal from the position he has held about ten years. It is said that charges of various kinds were made against him but if such is the case they have not been made public. The only reason given for his retirement at this time was his refusal to allow a certain docket to be taken away from his office without an order from the court.

### Holcombe Remains Clerk Until After Juries are Drawn.

Mr. Wilson arrived here on the noon train yesterday, having come to this city direct from Washington. Whether or not he had been notified some time ago to hold himself in readiness to take the position of clerk of the court when it was vacated has not been ascertained but the supposition is that he had been so advised and left on the first train upon receipt of instructions. Few people here aside from government officials knew of his arrival until evening, and it did not become generally known until today what mission had brought him here. He was met at the depot by Special Assistant Attorney General McHarg, and driven at once to St. Vincent's Sanitarium where most of the outside federal officials have apartments.

E. P. Holcombe who is assisting Special Assistant Attorney General Ormsby McHarg in the federal investigations now in progress in New Mexico will continue in charge of the clerk's office until August 10 when the drawing of jury venires for the fall term of the United States district court will be held. Mr. Holcombe posted a notice in front of the court house yesterday as required by law calling attention to the date upon which the jury drawing would be held.

### Expect to Secure Wholesale Indictments.

The United States Court will convene Monday, September 2.

Special Assistant Attorney General McHarg and Gordon it is rumored are expecting to secure a large number of indictments for alleged land frauds at the coming term of the federal district court.

That an effort will be made in this direction there is little doubt as is evidenced by the fact that a corps of special agents of the general land office is scattered all over the Territory gathering documentary evidence and of the retention of the temporary clerk in office until after the prospective jurors have been drawn. Mr. Wilson himself has been in the employ of the federal government for some time and his appointment only strengthens the belief that the alleged land frauds will be vigorously prosecuted.

### New Clerk Graduate of Harvard University.

The new clerk is an unassuming young man, being about thirty years old. He wears spectacles and is sparsely built although of athletic frame. He has made a rather favorable impression upon the few people he has met here since his arrival. That he is mentally capable of attending to the work of the office may be indicated from the fact that he is a graduate of Harvard University and of the Columbian law school of Washington. He is married and his wife will probably join him here in a few weeks. It was reported yesterday that he is a son of James M. Wilson, secretary of the Department of Agriculture, but this is a mistake. Neither is he a son of Jesse E. Wilson, acting secretary of the Depart-

## CONTRIBUTION OF NATIONAL FORESTS

New Mexico Receives Almost \$10,000 for Its Schools and Roads for Fiscal Year Just Closed.

Acting Governor James W. Reynolds is in receipt of a communication from Acting Secretary Willas L. Moore of the Department of Agriculture informing him that the contribution of the national forests to the schools and roads in New Mexico for the fiscal year just closed is almost \$10,000. The following letter from Acting Secretary Moore explains itself:

Department of Agriculture, Office of the Secretary,

Washington, D. C.  
The Governor of New Mexico, Santa Fe, N. M.

Sir—The Agricultural Appropriation Act for 1908, approved March 4, 1907, contains the following provision:

"That ten per centum of all money received from each forest reserve during any fiscal year, including the year ending June 30th, 1906, shall be paid at the end thereof by the Secretary of the Treasury to the State or Territory in which said reserve is situated, to be expended as the State or Territorial legislature may prescribe for the benefit of the public schools and public roads of the county or counties in which the forest reserve is situated: Provided, further, that when any forest reserve is in more than one state or territory or county the distributive share to each from the proceeds of said reserve shall be proportional to its area therein; And provided, further, That there shall not be paid to any State or Territory for any county an amount equal to more than forty per centum of the total income of such county from all other sources."

The ten per centum thus provided will be paid by the Secretary of the Treasury who will determine the exact distributive share of the Territory of New Mexico.

Pending this determination, the following report from the records of the forest service will show you the net receipts from the national forests in your state during the fiscal year 1907, and the approximate (but perhaps not the exact amount due under the terms of the act just quoted:

Forest.	Receipts.
Big Burros .....	\$ 5,053.25
Gallinas .....	686.10
Gila .....	37,845.77
Guadalupe .....	50.20
Jemez .....	28,341.05
Lincoln .....	7,253.65
Las Animas .....	
Magdalena .....	2,515.50
Manzano .....	2,538.46
Mount Taylor .....	130.05
Pecos River .....	2,749.63
Peloncillo .....	1,328.45
Portales .....	74.80
San Mateo .....	6,450.08
Taos .....	1,122.99
Total .....	\$96,140.58

Ten per cent of this amount, or \$9,614.06, is the approximate contribution of the forests to the schools and roads in New Mexico for the year just closed.

It is with great pleasure that I am able to notify you of this direct contribution of the national forests to the counties in which they lie.

I have the honor to be, Sir,  
Very respectfully,  
Your obedient servant,  
(Signed) WILLAS L. MOORE,  
Acting Secretary.

## REPUBLICANS OF OKLAHOMA MEET

Convention Convened at Tulsa Today to Name New State Ticket—Franz for Governor.

Tulsa, I. T., Aug. 1.—The Republicans of Oklahoma and Indian Territory met here in convention today to adopt a platform, decide the question of naming a full list of officials for the proposed new state and to select a chairman of the state central committee. The convention will also take some action regarding the recently adopted constitution that is to be put to a vote of the people September 3d. Frank Franz, the present governor of Oklahoma, has no opposition for the nomination of the governor for the new state.

ment of the Interior, as the latter is little if any older. His father is a retired lawyer living in Boston.

### Applicants for Position of Deputy Clerk Numerous.

Who Mr. Wilson will appoint as his deputy when he becomes district clerk has not yet been determined. It is reported there are several applicants for the position. However in appointing an assistant Mr. Wilson will likely be guided by the recommendation of Judge McFie.

R. Vere Boyle, who served as deputy under Clerk Bergere was offered his old position back yesterday by Clerk Holcombe but they could not come to terms as to salary.

The emoluments of the office of clerk of the district court amount to about \$5,000 annually.

## MIGHT LEAD TO CIVIL WAR

**North Carolina Imbroglio Viewed With Alarm.**

### SHOULD BE STOPPED

**Northern Congressman Condemns Fight Between State and Federal Courts.**

Chippewa Falls, Wis., Aug. 1.—Congressman Jenkins, chairman of the House Judiciary Committee, last night issued a statement relative to the North Carolina railroad rate imbroglio. He says there never has been any event since the Civil War that calls for so severe condemnation as the recent senseless trade on behalf of that state against the nation and adds that it is humiliating that the matter has been compromised and that the nation has to some extent surrendered.

### Laws Must Be Obedied.

"The Civil War was the result of such agitation and we may have earlier than we want another Civil War," he said. "To avert such a calamity and preserve the nation we must conform to the law, obey the law and have the law enforced to the framework provided by the constitution."

Judge Jenkins points out that the Supreme Court of the United States is made a final judge between the state and the nation. He believes the executive of a state should keep cool, maintain his dignity and remember we have to depend on the judiciary of the country to save the union.

### State Making Fool of Itself.

"Ever since the Civil War," he said, "other states have had similar troubles and did not make fools of themselves or declare war and the questions involved were decided by the supreme court and no bad results followed. If all the state authorities are going to usurp the functions of the Supreme Court and judge what federal acts shall be nullified, no one can tell where it will end."

## BRITT DEFEATS BATTING NELSON

Lightweight Fight at San Francisco Went Full 20 Rounds—Dane All But Out at End.

San Francisco, Aug. 1.—Jimmy Britt made the following statement after his fight last night with "Batling" Nelson in which a decision was given in his favor at the end of twenty rounds:

"Nelson could not have gone half a round further. I am willing to meet any 135 pound man in the world."

Nelson said:

"I have no excuses. Britt fought a good fight but at that I think he won in the last round. I did my best."

Just before the gong sounded in the twentieth round, Britt put the Dane to the mat with vicious rights and lefts to head and jaw and had the fight gone another round, it is believed Nelson would have been knocked out. The California boy had the best of the fight all the way through. Last night's battle was the third contest between the two fighters, each having won a fight before.

## \$50,000 FIRE GUTS POOR FARM

Pittsburg's Hospital For Insane Almost Totally Destroyed—5,000 Inmates Rescued.

Pittsburg, Aug. 1.—Fire at Marshall-sea, Pittsburg's poor farm, which broke out last night and for several hours threatened the destruction of all the buildings on the grounds was confined to the buildings used as a laundry, bake shop, kitchen and chapel. The loss is fifty thousand dollars. Six employees who were fighting the flames were caught under a falling wall. Samuel Means was crushed to death and W. H. Larkin so seriously injured that his recovery is doubtful. The others are not dangerously hurt. Nearly five hundred insane inmates were removed from danger without trouble.

### ALLEGED THAT RAILROAD EMPLOYEE ALTERED PASS.

Albuquerque, N. M., Aug. 1.—W. A. Moberly, a railroad employee, was arrested yesterday at Lamy Junction by Special Officer Ben Williams of the Santa Fe detective force on a charge of altering a railroad pass. He was brought to this city for a preliminary hearing. It is claimed Moberly altered a pass issued him so that it read "pass three" instead of one. The pass was from Kansas City to San Marcial.

## INAUGURATION NEXT THURSDAY

**Gov. Curry Will Reach Here Week From Today**

### LEAVES FOR ROSWELL

**Will Be Accompanied Part of Way By Delegate W. H. Andrews.**

### Special to the New Mexican.

Washington, D. C., Aug. 1.—Governor George Curry arrived last evening from Oyster Bay and leaves tonight for Roswell, New Mexico, going via Newton, Kansas, and will reach Santa Fe Wednesday next, the 7th, instant. He will be sworn in as governor of New Mexico on Thursday, the 8th instant.

Delegate Andrews will also leave tonight for New Mexico, and will reach Santa Fe Sunday night. He will go as far as Newton, Kansas, with Governor Curry, and will continue on the main line of the Santa Fe to New Mexico.

### Original Program to be Carried Out.

The inauguration ceremonies will be carried out as originally planned and the indications are that they will be the most notable of any similar occasion in the annals of New Mexico.

Captain Curry will take the oath of office about 2 o'clock in the afternoon in the hall of the House of Representatives on the third floor of the Capitol building. Chief Justice William J. Mills and all of the associate justices of the Territorial Supreme Court will be present to add dignity to the inauguration.

Preceding the inauguration proper there will be a parade from the hotel at which the new governor will have taken his apartments to the state house. Various military and civic organizations will take part in the procession together with federal and Territorial officials and distinguished guests in carriages.

The social feature of the inaugural ceremonies will be the reception and ball which will be held in the evening at the Palace Hotel. These functions will be open to the general public as will also be the inauguration itself. To defray expenses an admission will be charged to the ball, tickets for which are being sold at \$5 which will admit a lady and a gentleman.

## MASTER MECHANIC SANTA FE CENTRAL

T. J. Tonge Resigns Position and Goes to El Paso and Southwestern—J. A. Baker May Succeed Him.

Thomas J. Tonge who has been for about six months superintendent of motive power of the Santa Fe Central Railway, has resigned this position to accept one as master mechanic of the El Paso and Southwestern Railroad. Mr. Tonge assumed his new duties today. He is assigned to the division headquarters at Santa Rosa which will be removed shortly to Tucumcari.

Mr. Tonge's successor has not yet been appointed. J. A. Baker, who was until recently a master mechanic on the Mexican Central Railway, with headquarters at Jicomulco, Mexico, arrived in the city last night, and was in consultation today with General Manager S. B. Grimshaw. Mr. Baker has been offered the position but has taken the matter under advisement until he has made a trip over the system. He will leave tomorrow morning in company with General Manager Grimshaw for an inspection of the line.

## CAPT. CURRY SPENT TODAY IN WASHINGTON

Had Lengthy Interview With Assistant Secretaries of Interior Which Was Satisfactory.

### Special to the New Mexican.

Washington, D. C., Aug. 1.—Captain George Curry who arrived here late last evening had a lengthy interview with President Roosevelt yesterday at Oyster Bay, which was very satisfactory in every respect.

Today Governor Curry had a lengthy interview with two Assistant Secretaries of the Department of the Interior, which was also very satisfactory.

### DOCKWORKERS GO BACK TO WORK AT DULUTH.

Duluth, Minn., Aug. 1.—Work on the ore docks began promptly this morning with 243 men and more will be put on as the day advances. There was no trouble. Loading began at the Hull Rust mine at Hibbing today and no violence has been reported.

## ANNUAL CONVENTION OF WOOL GROWERS

To be Held in Albuquerque During Fair Week in October—Will be Biggest Gathering Yet Held.

Albuquerque, N. M., Aug. 1.—The call for the annual meeting of the New Mexico Wool Growers' Association has just been issued by Secretary Harry F. Lee. The meeting this year will be held in this city on October 7 and 8, the week of the big Territorial fair and the most successful gathering in the history of the association is expected. The official call which is signed by President Solomon Luna of the association is as follows:

### Official Call.

To the Members of the New Mexico Wool Growers' Association and All Others Interested in the Welfare of the Sheep and Wool Growing Industry:

Under the constitution and by-laws of this organization it becomes my duty to notify you that in accordance with the action of the executive committee the second annual convention of the New Mexico Wool Growers' Association will be held at Albuquerque on Monday and Tuesday, October 7th and 8th, 1907.

The New Mexico Wool Growers' Association was formed only last October, at the largest and most enthusiastic business convention ever held in New Mexico. It was created to look after the interests of the sheep and wool growers of New Mexico, and matters concerning the prosperity of the industry.

Questions are now confronting the sheep growers which are of vast importance, such as government control of grazing on the public domain, forest reserve regulations, the car shortage, scab eradication, as well as the reduction of tariff on wool. These are vital, living problems and only by a strong organization can New Mexico become a factor in their elucidation.

The formation of the New Mexico Wool Growers' Association has met with universal approval by the sheep growers, but the membership must be increased. All sheep growers and other persons interested are invited and urged to attend the convention to be held under this call, to become members of and to take an active part in fixing the policy of this organization which was created for the sole purpose of being an assistance and benefit to them.

Yours truly,  
SOLOMON LUNA,  
President.

HARRY F. LEE,  
Secretary and Treasurer.

## PREDICTS END OF LIQUOR TRAFFIC

Leading Prohibitionist Thinks It Will Become National Political Issue at an Early Date.

### Chicago, Aug. 1.—"Every state in the Union will at a comparatively early date be free from legalized liquor traffic," said Charles R. Jones, chairman of the National Prohibition Committee, last night. Jones bases his prediction on the action of the state of Georgia in enrolling itself among the "dry states." He believes the Republicans and Democrats will be fighting over the liquor question as their main issue at an early date.

## BUTTE MACHINISTS GO ON STRIKE

Mine Owners Refused Demand of 50 Cents Increase in Wages—May Cause Shut-Down.

Butte, Mont., Aug. 1.—The refusal of the mine owners to grant an increase of fifty cents a day to the machinists employed in the mines in this district was followed by the calling out of all the members of the machinists' union at midnight last night. About 250 men belong to the union. The present wage scale is \$4.50 a day. Should the strike last long it will result in shutting down the mines.

## KOREAN SOLDIERS MADE PRISONERS

Japanese Troops Surround Barracks at Seoul—Exits Guarded With Machine Guns.

Seoul, Aug. 1.—At 10 o'clock last night Japanese troops surrounded the Korean barracks after the imperial proclamation had been issued disbanding the Korean army composed of several thousand men. Outlets from the Korean army barracks are guarded by machine guns. The emperor's body guard will not be disbanded.

### HAIL DESTROYS GRAIN CROPS IN SOUTH DAKOTA.

Aberdeen, South Dakota, Aug. 1.—One hundred and sixty square miles of growing grain in Brown and Spink Counties was practically destroyed night by the worst hail storm in that vicinity in years. The storm was accompanied by a high wind.

## ONE RUMOR IS NAILED AS LIE

**Anent Reported Removal of Acting Governor**

### IDLE STREET GOSSIP

**Small Clique of Sore Head Politicians Responsible For Sensational Stories.**

The knockers and back-biters in this city, (and, unfortunately they are more than is good for the town) are still busy circulating stories of the removal of certain territorial officials. These tales are being industriously circulated by the lying correspondent of the Albuquerque Morning Coyote Journal, by a few tax-loggers, a shyster or two, who have more time than business and by a few personal enemies of the federal and territorial officials, whose names are being bandied about in this connection. In fact, it is said that one shyster is offering to bet \$500 that some of these removals will take place in fifteen days. Wholesale Dismissal of Officials Rumored.

Among the officials slated, according to this crowd, are Secretary of the Territory, James W. Reynolds, Surveyor General M. O. Llewellyn, U. S. Attorney W. H. H. Llewellyn, and Judge John R. McFie, also one or two other judges, several clerks of courts and a number of Territorial officials proper. There is some object in this underhanded and dirty business, else it would not be so industriously and constantly circulated.

These fellows also claim to be well posted and to have access to information and reports which have been and are being sent from this city to the National Capital by special agents and Washington officials here for the purpose of investigating Territorial land matters and other conditions. How much truth there is to this cannot be very well ascertained as the agents and special officials deny any knowledge when one of them can be gotten to talk.

### Claim to be on "Inside."

The back biters and slanderers seem to enjoy this inning. The business men and responsible citizens take little stock in it, although there is a good deal of talk concerning it.

### Collector Bardshar Denies Rumor Concerning Him.

Concerning the story current yesterday that Internal Revenue Collector H. P. Bardshar had been selected to succeed Acting Governor James W. Reynolds, Mr. Bardshar called at the office of the New Mexican this morning and stated that he knew absolutely nothing about this matter. He also deprecated the connection of his name with the stories.

Acting Governor Reynolds learned of the rumor early in the day. Friends began calling at the executive office or ringing him up over the telephone to ascertain if there was any truth in the report. He informed them that so far as he knew there was nothing to it.

### Mr. McHarg Enters Denial to Rumor.

Special Assistant Attorney General McHarg, who according to the rumor had recommended the removal of Mr. Reynolds and the appointment in the latter's place of H. P. Bardshar, denied that he had sent any such request to Washington.

"May I quote you as saying there is no truth in the report?" Mr. McHarg was asked by a representative of the New Mexican.

"Why, yes, you can if you want to," was the unhesitating reply.

Mr. McHarg's denial had the effect of discrediting the rumor.

## METHODIST CHURCH TO BE DEDICATED

Handsome Edifice at Estancia Will Be Scene of Christening Ceremonies Next Sunday.

Estancia Methodists are making great preparations for the dedication of their handsome new church which will take place next Sunday. Rev. Samuel Blair, of El Paso, Texas, superintendent of English Missions, of the Methodist Episcopal Church, will deliver the dedicatory sermon. The new house of worship is a frame structure and a credit to the town. Rev. W. A. Pratt who was recently appointed pastor has assumed charge of the ministerial duties there and the congregation is growing rapidly under his able leadership. The Santa Fe Central Railway will make a special party rate of one fare from Santa Fe for the round trip as a number of people of this city are desirous of attending the dedication. Tickets will be good leaving here Saturday and returning Monday.



## SANTA FE NEW MEXICAN.

THE NEW MEXICAN PRINTING COMPANY, PUBLISHERS.  
MAX FROST, Editor. JOHN K. STAUFFER, Sec'y-Treas.

Entered as Second Class Matter at the Santa Fe Postoffice.

RATES OF SUBSCRIPTION.	Daily, six months, by mail.....	3.75
Adv. per week, by carrier.....	Weekly per year.....	3.00
Daily, per month, by carrier.....	Weekly, six months.....	1.00
Daily, per month, by mail.....	Weekly, per quarter.....	.75
Daily, per year, by mail.....		7.90

## OFFICIAL PAPER OF SANTA FE COUNTY.

The New Mexican is the oldest newspaper in New Mexico. It is sent to every postoffice in the Territory and has a large and growing circulation among the intelligent and progressive people of the southwest.



## THE REFEREE'S REPORT IN THE BURSUM CASE.

The Silver City Enterprise, an influential weekly newspaper published in the growing town of Silver City, and having a very intelligent and well informed class of people as its readers, treats the matter of the report of Referee Charles V. Safford in the Bursum case timely, thoroughly and honestly in an editorial which is herewith published and which will surely meet the approval and commendation of decent, respectable and fair minded citizens. Says the Enterprise:

"The report of Referee Charles V. Safford on the accounts of ex-Superintendent of the Penitentiary H. O. Bursum was made public last week and proves a complete vindication of that gentleman. The report is quite lengthy going into every detail of every financial transaction completed under Mr. Bursum's term as superintendent. No white washing has been indulged in as the report is an official court document, prepared by order of the Third Judicial Court in which suit was brought against the Territory by Mr. Bursum for an official accounting. It will be remembered that an alleged accounting of the penitentiary finances was made last September by a Colorado expert employed by ex-Governor Hagerman, which pretended to show that Mr. Bursum was short in his accounts about \$5,000. Mr. Bursum protested his innocence and declared that all he asked was a fair, unbiased report by a committee of disinterested parties and made an offer to Governor Hagerman that each appoint an accountant, these two to name a third person and the three to make an exhaustive and complete accounting of the books. The offer was never accepted. During the last legislature an act was passed which provided that any office-holder or ex-office holder could use the Territory for an accounting, where his accounts were in dispute, and the matter would be referred by the court to some competent person to investigate the account. Acting under this law, Mr. Bursum brought suit before Judge F. W. Parker of the Third Judicial District and Judge Parker appointed Traveling Auditor C. V. Safford, one of the most expert accountants in the Territory, to expert the books. Mr. Safford has been working on the job for several months and has produced a report that will stand the light of day. It is exhaustive and complete and after charging Mr. Bursum with everything that could be charged him, and giving him all proper credits, the report finds that instead of being short in his accounts he has a net credit of \$4,333.56. Glaring inaccuracies and omissions were found in the Colorado expert's report, it being alleged that items amounting to over \$3,000 which should have been charged up to Mr. Bursum were entirely overlooked, yet even with this discrepancy the report shows a net credit to Mr. Bursum of over \$4,000.

"The report can be relied upon to be as near correct as human ingenuity can make it and the results of the findings will prove no more gratifying to Mr. Bursum than to his many friends throughout the Territory, who, knowing the man and his inherent honesty, put no faith in the accusations made against him and have stood loyally by him. The mills of the Gods grind slowly but they grind exceedingly small and the men who have attempted to build their political fortunes by attempting to ruin reputations of others, will find this out before they are through with this thing."

THOROUGH BUT FAIR INVESTIGATION DEMANDED.

In commenting upon the investigation now being made into New Mexico affairs by special agents of the general land office and by assistant attorney generals, the Las Vegas Optic properly remarks the following:

"The investigation now being carried on at Santa Fe by special representatives of the government is most welcome to the Republican organization of New Mexico. If there has been crooked work by any individuals, the men at the head of the Territorial administration are just as anxious to know it as are the special agents from Washington.

"Undisguised grafters and fake reformers are all in the same class and if any of either are found in office, it is the wish of every decent citizen of the Territory that they be removed at once. While up to the present time the only men who have been found 'with the goods on' have been more or less closely identified with the Hagerman idea, it is hoped that the investigation will be so thorough that no guilty man, no matter what particular class he has trained with will be ferreted out and punished."

Right here it is timely and proper to say that investigations of the kind named, when properly conducted, will have the support and countenance of the respectable and well-meaning citizens of the Territory. Complaints, however, have been made that some of these officials are listening to unsupported moonshine tales, fake stories, and slanders by lying correspondents of yellow sheets, by slyster lawyers and by a few knockers, tax dodgers, who have nothing at stake except blackening the reputations of honest citizens and officials, especially Republican. Why any official should at all listen to this despicable crowd is not clear to the average, fair minded citizen, especially when it is remembered that the creatures engaged in this back-biting and knocking business, have uniformly proven enemies of the Roosevelt administration and the Republican party.

A CHANGE FOR THE BETTER.

"Not much is said by the opposition papers about the Safford penitentiary report and then they are very guarded in what they do say. Surely a new order of things has come for New Mexico,"—Santa Rosa Sun.

And a better order of things since the disappearance of the Hagerman fake reform machine. A still better order of things will be the result, in the opinion of this paper, when Governor Curry assumes the reins of office.

The temporary administration of Acting Governor Reynolds has been remarkably well conducted, considering that it was only temporary. The few appointments he made have met with the approval of the people generally, and of every Republican newspaper. Even the yellow sheets have not dared to criticize them except that the Albuquerque Coyote Journal has attacked the appointment of Attorney General George W. Prichard. That was as natural as it is for water to run down hill. But one or two of the Democratic sheets of the Territory have followed suit.

The other appointments made, namely, of J. H. Vaughn, as treasurer of the Territory, Marion Littrell, as superintendent of the Territorial penitentiary, and of the members of the Board of Capitol Extension—three, namely: Ex-Governor M. A. Otero, of Santa Fe; F. H. Pierce, of Las Vegas, and W. S. Hopewell, of Albuquerque, also of Oscar C. Snow, of Las Cruces as member of the Board of Water Commissioners, of Arthur Seligman as member of the Territorial Board of Equalization, and of R. W. D. Bryan, of Albuquerque, as member of the Board of Trustees of the Reform School, are recognized by all fair minded people regardless of politics as good as could possibly have been chosen from the citizens of the Territory.

These appointments were remarkably free from partisanship. Not much more need be said along this line. The facts speak for themselves and they are creditable in the highest degree.

## WHAT THE PEOPLE DESIRE.

Governor Curry's utterances so far in this Territory, and as reported by the Associated Press from the East, are all right, and in the right direction. The patriotic and justice-loving citizens of the Territory ask nothing but a fair, just and honest administration of affairs. They desire competent and honorable men in office.

The people of this Territory have governed themselves very well for the past sixty years, and why should they not continue to do so for a few years longer, and until they attain statehood? No good reason whatsoever exists why this should not be the case.

All this commotion has been fomented mostly by the Hagerman fake reform machine, and the money that it is able to spend, is clap trap and based on little tangible. Were it not for the Hagerman "bar", which is being "tapped" profusely, there would be mighty little to do.

The Albuquerque Morning Coyote Journal is taking a good deal of interest in that \$50,000 libel suit brought against it by the attorney general. It will take more interest some time during September, A. D. 1907.

The water supply of this city is not what it ought to be. Considering the fact that much of the water is used for purposes for which it should not be used by the water company, this is easily explained.

## THE GROWTH OF QUAY COUNTY.

The Montoya-Republican, owned and edited by W. C. Hawkins, will commence publication in the town of Montoya, on the Chicago, Rock Island & Pacific Railroad, in Quay County, at an early date. As its name implies, it will be Republican in politics. The New Mexican hopes the new venture will be a benefit to the people of the town it will be published in, and to the Republican party. There cannot be too many Republican papers in the County of Quay. The latter has settled up very rapidly during the last four years, the immigration being mostly from Kansas, Oklahoma and Texas. Its school population has increased from 1,100 last year to 3,500 this year, as shown by the census of persons of school age for the present year, taken and prepared by Miller Rudolph, the present efficient superintendent of county schools. Points of this nature show conclusively how false and untrue are the assertions of the yellow sheets of the Territory, that a corrupt and dishonest government has been in rule in New Mexico within the past ten years except under the recent fake reform administration. Were this charge true neither Quay County, nor any other county in New Mexico, would show one-fifth of the great increase in population and in wealth experienced in the past five years.

## AN INDUSTRY THAT SHOULD BE FOSTERED.

New Mexico sheep growers have during the past few months disposed of almost twenty million pounds of wool at more than fifteen cents a pound. In the meanwhile, between three and four million lambs are growing ready for market and will bring something like nine million dollars more into the Territory. An industry that each year produces \$40 per capita of population is certainly of more than passing importance and should be carefully fostered so that changed conditions caused by the influx of homeseekers and creation of forest reserves will not injure it. Ohio, without public grazing lands and less than one-half the area of New Mexico, stands near the head of wool that make the sheep industry and sheep growing commonwealths and New Mexico sheep growers should look into the methods wealths and New Mexico sheep growers should look into the methods that make the sheep industry profitable in Ohio, with a view of introducing them in New Mexico if at all applicable, so as to be prepared for the day when the public range in New Mexico will be greatly diminished in area and no longer free as it is today.

## REFORM TO A FRAZZLE.

The Pecos Valley News expresses the opinion that the Bursum case shows that reform to a frazzle obtained under the late unlamented fake reform administration. Says the News:

"Traveling Auditor Charles V. Safford who was appointed Referee in the investigation of the accounts of H. O. Bursum while he was superintendent of the Territorial penitentiary was appointed to his present office by ex-Governor Hagerman and is regarded as being one of the best accountants in the Territory. The report is to be passed upon by Hon. Frank W. Parker, Associate Justice of the Supreme Court and it found correct will show that Mr. Bursum was compelled to pay into the penitentiary funds nearly \$5,000 that he did not owe. This is reform to a frazzle."

The postoffice department is certainly active in the right direction when it insists that mail trains should adhere to the published time schedule and when they cannot adhere to the schedule that a time table be declared which can be depended upon by the Department as well as the public. Santa Fe's experience with delayed trains has been so notorious and has been an unremedied evil for the past quarter of a century that locally the public will feel pessimistic about the success of the postoffice department's efforts to inaugurate a better era in this respect. However Uncle Sam has undertaken other Herculean tasks, under the Roosevelt administration and it may crown its reform efforts by ushering in the day when daily mail trains will arrive on or nearly on time at least once or twice every week.

Thomas Lawson invading Arizona with seventeen million dollars capital to foster the mining and smelting industry of the neighboring Territory should induce New Mexico to cast about for the friendship of magnates of that size. All of Lawson's eccentricities and lurid advertising methods will be forgiven him as long as he uses his wealth to build up industry and give employment to the industrious, rather than in stock manipulations or attacking "The System" of which he confesses to have been an integral part at a date not so many years ago.

U. S. Senator Albert J. Beveridge is to be married August 7. While New Mexico is still somewhat sore over the drubbing he gave it in his report on statehood during the Fifty-ninth Congress, its people nevertheless wish him long life, prosperity, happiness and success.

The judges of the Supreme Court of Nebraska are evidently all happily married. That court has just rendered the unanimous decision "that the wife is the boss of the house."

## PROFESSIONAL CARDS

## ATTORNEYS-AT-LAW.

MAX. FROST,  
Attorney at Law.  
Santa Fe, N. M. New Mexico.

G. W. PRICHARD,  
Attorney and Counselor at Law.  
Practices in all the District Courts and gives special attention to cases before the Territorial Supreme Court.  
Office: Laughlin Bldg., Santa Fe, N. M.

BENJAMIN M. READ  
Attorney at Law.  
Santa Fe, N. M. New Mexico.  
Office: Sena Block, Palace Avenue.

WILLIAM H. H. LLEWELLYN,  
Attorney at Law.  
Las Cruces, New Mexico.  
United States District Attorney.

A. W. POLLARD,  
Attorney at Law.  
District Attorney, Luna County.  
Deming, N. M. New Mexico.

BONHAM & WADE,  
Attorneys at Law.  
Practice in the Supreme and District Courts of the Territory, in the Probate Courts and before the U. S. Surveyor General and U. S. Land Offices.  
Las Cruces, N. M.

E. C. ABBOTT,  
Attorney at Law.  
Practices in the District and Supreme Courts. Prompt and careful attention given to all business.  
Santa Fe, N. M. New Mexico.

A. B. RENEHAN,  
Practices in the Supreme and District Courts. Mining and Land Law a Specialty. Office in Catron Block, Santa Fe, N. M.

CHAS. F. EASLEY,  
(Late Surveyor General.)  
Attorney at Law.  
Santa Fe, N. M. New Mexico...  
Land and Mining Business a Specialty.

GEORGE B. BARBER,  
Attorney and Counselor at Law.  
Lincoln, Lincoln County, New Mexico.  
Practice in the District Court and Supreme Courts of the Territory.  
Prompt Attention Given to All Business.

FRANK W. CLANCY,  
Attorney at Law.  
District Attorney for Second Judicial District.  
Practices in the District Court and the Supreme Court of the Territory; also before the United States Supreme Court in Washington.  
Albuquerque, New Mexico.

JOHN K. STAUFFER,  
Notary Public.  
Office with the New Mexican Printing Co., Santa Fe, New Mexico.

ROMAN L. BACA,  
Real Estate and Mines.  
Spanish Translator, Notary Public.  
Office Griffin Bldg., Washington Ave., Santa Fe, N. M.

OSTEOPATHY.  
DR. CHARLES A. WHEELON,  
Osteopath.  
No. 103 Palace Ave.  
Successfully treats acute and chronic diseases without drugs or medicines.  
No charge for Consultation.  
Hours: 9-12 m., 2-5 p. m. Phone 156.

CONY T. BROWN,  
Mining Engineer.  
Secretary and Treasurer New Mexico School of Mines.  
Socorro, N. M. New Mexico.

CORBET & SMYTHE,  
Civil, Mining and Hydraulic Engineers.  
Assaying and General Contracting.  
U. S. Deputy Mineral Surveyors.  
East side Plaza. Santa Fe, N. M.

H. B. HOLT,  
Attorney at Law.  
Las Cruces, New Mexico.  
Practices in the District Courts as well as before the Supreme Court of the Territory.

NEAT LUNCH COUNTER.  
The Bon Ton Lunch Counter has been replanted, and refurnished, and is now one of the best in the Territory. They handle everything in the eating line from both eastern and western markets. A call will convince you that they know the business.

When in need of anything in the printing line, such as wedding cards, invitations, bulletins, call on the New Mexican Printing Company, where no work is guaranteed.

(Homestead Entry No. 8161.)  
Notice for Publication.  
Department of the Interior,  
Land Office at Santa Fe, N. M.  
July 9, 1907.

Notice is hereby given that Luciana C. Villanueva, widow of Nicolas Villanueva, deceased, of Galisteo, N. M., has filed notice of her intention to make final commutation proof in support of her claim, viz.: Homestead Entry No. 8161 made November 23, 1904, for the NW 1-4, section 26, Township 12 N., Range 11 E, and that said proof will be made before the register and receiver at Santa Fe, N. M., on August 21, 1907.

He names the following witnesses to prove his continuous residence upon, and cultivation of, the land, viz.: Juan Villanueva, Tomas Villanueva, Ambrosio Pino, and Francisco Gonzales, all of Galisteo, N. M.

MANUEL R. OTERO,  
Register.

## THE FIRST NATIONAL BANK

OF SANTA FE.

The oldest banking institution in New Mexico. Established in 1870  
RUFUS J. PALEN, President. JOHN H. VAUGHN, Cashier.  
LEVI A. HUGHES, Vice President. ALFRED H. BRODHEAD, Assistant Cashier.

Capital Stock \$15,000. Surplus and Undivided Profits \$63,500.

Transacts a general banking business in all its branches. Loans money on the most favorable terms on all kinds of personal and collateral security. Buys and sells bonds and stocks in all markets for its customers. Buys and sells domestic and foreign exchange and makes telegraphic transfers of money to all parts of the civilized world on as liberal terms as are given by any money transmitting agency, public or private. Interest allowed on time deposits at the rate of three per cent per annum, on a six months' or year's term. Liberal advances made on consignments of live stock and products. The bank executes all orders of its patrons in the banking line, and aims to extend to them as liberal treatment in all respects, as is consistent with safety and the principles of sound banking. Safety Deposit boxes for rent. The patronage of the public is respectfully solicited.

## THE PALACE HOTEL

WILLIAM VAUGHN, Propri.

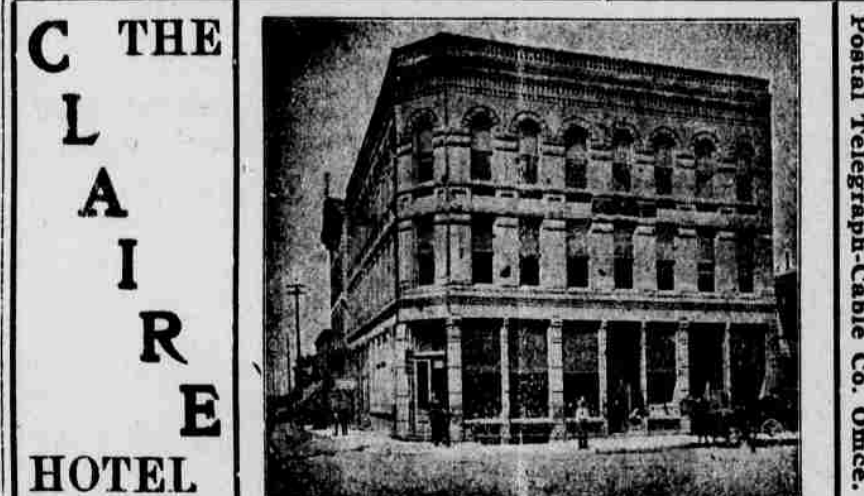
One of the Best Hotels in the West

Cuisine and Table Service Unexcelled

Large Sample Rooms for Commercial Travelers.

Santa Fe, New Mexico. - Washington Avenue

LACOME &amp; GABLE, Proprietors.



American and European Plan. Commodious Sample Rooms. Steam Heated. Electric Lighted. Every Room a Good One. Short Order Department Open Day and Night. Press the Button we do the rest.

## Coronado Hotel and Cafe

One of the Best Restaurants in the Southwest.

## OPEN DAY and NIGHT

You're Treated So Well You Can't Hardly Leave.

## DON'T FORGET THOSE SWELL ROOMS

Only 50c. Hot and Cold Water Baths  
SHORT ORDERS SERVED IN A RUSH

Eat Pure Food, Sleep on a Nice Clean Bed—What More. (Es Bastante)  
I respectfully, but earnestly request that you take your meals at my restaurant, south side plaza.

G. LUPE HERRERA, Prop.

## BERGERE INSURANCE AGENCY COMPANY

GENERAL AGENTS FOR NEW MEXICO FOR

## PENN MUTUAL LIFE INSURANCE COMPANY

OF PHILADELPHIA, PA.

Purely a Mutual Insurance Company.

## National Surety Co., of New York

Court, Fidelity and Public Official Bonds—Lowest Rates. Strong Line of Fire Insurance Companies.

Palace Avenue

## SANTA FE, ... NEW MEXICO

SUBSCRIBE FOR THE DAILY NEW MEXICAN.



The New Mexican Printing Company has prepared civil and criminal dockets especially for the use of justices of the peace. They are especially ruled, with printed headings, in either Spanish or English, made of good record paper, strongly and durably bound with leather back and covers and canvas, sides, have full index in front and the fees of justices of the peace and constables printed in full on the first page. The pages are 10x6 inches. These books are made up in civil and criminal dockets, separate of \$2.50 each, or with both civil and criminal bound in one book, \$4.00 pages civil and 320 pages criminal. To introduce them they are offered at the following low prices:

Civil or criminal.....\$2.50  
Combined civil and criminal.....\$4.00

For 45 cents additional for a single docket, or 55 cents additional for a combination docket, they will be sent by mail or prepaid express. Cash in full must accompany order. State plainly whether English or Spanish printed heading is wanted.

Herewith are some bargains offered by the New Mexican Printing Company: Code of Civil Procedure of the Territory of New Mexico, 1897, sheep bound, \$1; paper bound, 75c; Missouri Pleading forms, \$5; Missouri Code Pleadings, \$6; the two for \$10; Adapted to New Mexico Code, Laws of New Mexico, 1899, 1901, and 1903, English and Spanish pamphlet, \$2.25; full leather, \$3; Sheri's Flexible-Cover Pocket Docket, single, \$1.25; two or more books, \$1 each; New Mexico Supreme Court Reports, Nos. 3 to 10, inclusive \$3.30 each; Compilation Corporation Laws 75c; Compilation Mining Laws, 50c; Money's Digest of New Mexico Reports, full sheep, \$6.50; full list school blanks.

### WHEN HER BACK ACHES

A Woman Finds All Her Energy and Ambition Slipping Away.

Santa Fe women know how the aches and pains that come when the kidneys fail make life a burden. Backache, hip pains, headaches, dizzy spells, distressing urinary troubles, all tell of sick kidneys and warn you of the stealthy approach of diabetes, dropsy and Bright's disease. Doan's Kidney Pills permanently cure all these disorders. Here's proof of it in a Santa Fe woman's words:

Miss Adela Arias, living at 106 Griffin St., Santa Fe, N. M., says: "The use of Doan's Kidney Pills in my case brought quick and thorough relief from a disordered condition of the kidneys that has troubled me for some time. I suffered from a dull heavy aching in the small of my back, the attacks always being aggravated by colds, and in addition to this trouble, I was often aggravated by colds. I was often distressed, with headaches and dizziness. My attention was first called to Doan's Kidney Pills about three years ago and procured a box at the Ireland Pharmacy, their use proved the claims made for them genuine. Off and on since that time whenever occasion has required, I have used Doan's Kidney Pills and the quick and positive relief always obtained is what warrants my high appreciation of this medicine."

For sale by all dealers. Price 50 cents. Foster-Milburn Co., Buffalo, New York, sole agents for the United States.

Remember the name—Doan's—and take no other.

Blank Butchers' Shipping Certificates for sale by the New Mexican Printing Company.

### MINES AND MINING.

The El Paso Herald describes the valuable and extensive mines in the Mogollon district in Grant County as follows:

The biggest mining proposition in the Mogollon camp is the Last Chance mine. It employs 80 to 90 men. Its 80-ton cyanide mill and concentrator was designed especially by E. Craig to treat the peculiar sulphide and chloride ores of the camp. The plant has a record of an average saving of 95 per cent in ore values.

The Last Chance mine is owned by the Ernestine Mining Company, a close corporation. The company uses \$120 worth of wood every 24 hours.

Another mine in the district, the Deadwood, is owned by a close corporation. They employ 20 men. There are two shafts in the property, one 100 feet and the other 234 feet in depth. A company has been lately organized by John Coffey to operate the Top mine, which is situated west of the Last Chance.

It is reported that the Little Fannie which is being operated by the Mogollon Mountain Investment Company will soon resume operations. The shaft is down to the depth of 550 feet.

The camp of Cooney, three miles from Mogollon, has many big properties. The Mogollon and the Enterprise companies are the principal producers. The Mogollon Gold and Copper Company operates the famous Cooney mine, which was discovered in 1878. The shaft is down 725 feet and is in an exceedingly rich ore body. The company owns some 30 claims, including the Florida and Queen groups. Practically all the development is confined to the Cooney.

The Enterprise mine, owned by the Enterprise Mining Company, is showing up well under recent developments. A considerable amount of manganese has been opened in the upper levels.

The greatest problem to be faced by mine operators in the Mogollon Mountains is the transportation question, which is being solved by building a motor road. The labor question is causing a great deal of trouble and it is feared that operations will have to be curtailed if more men cannot be secured.

### ASPHALTUM IN ROSWELL WELL

Rich Gold Ore Found in the White Oak Hills—Cement Plant.

Roswell, N. M., Aug. 1.—A short time ago the men drilling a well for J. I. Matkin discovered that there was considerable asphaltum in the rock through which they were drilling. A few days ago they brought to town still larger specimens than before and experts pronounce it to be of superior quality.

L. B. Tannehill and Cecil Bonney made a trip to the White Oaks mining region recently and have returned bringing with them ore samples from a point five miles east of White Oaks outside that mining district, that are pronounced by good judges to be the finest gold bearing ore they have seen. Tannehill and Bonney have located claims on the ore bearing tract and if ore like their samples exists there, they will no doubt have a "good thing."

The Roswell Cement Company is pushing the development work on its plant at Acme, on the Pecos River, twelve miles northeast of Roswell. The railroad company has completed the switch to the plant.

At this season we should eat sparingly and properly. We should also help the stomach as much as possible by the use of a little Kodol occasionally. Kodol for indigestion and dyspepsia will rest the stomach by actually digesting the food itself. Sold by The Ireland Pharmacy.

### KILLS BROTHER BY MISTAKE

Sad Tragedy at Bisbee—Shooting Done in Fit of Jealousy—Slayer Prostrated.

Bisbee, Ariz., Aug. 1.—A sad tragedy occurred in upper Tombstone Canyon, Bisbee, when Dee Thomas, a former night watchman crazed with jealousy, mistook his brother for a man he had reason to believe had wronged him, and blindly shot Southward Thomas to death with a Winchester.

He first realized his awful mistake when his wife cried out: "My God, Dee, you have shot Southward." Taking his brother tenderly in his arms Dee Thomas laid him on a lounge. He surrendered shortly afterwards to the sheriff.

His sorrow and remorse are pitiable, he declaring he does not want to live.

Southward Thomas died at the hospital. His brother is prostrated as a result of the killing and may lose his mind.

### Ten Years in Bed.

"For ten years I was confined to my bed with disease of my kidneys," writes R. A. Gray, J. P. of Oakville, Ind. "It was so severe that I could not move part of the time. I consulted the very best medical skill available, but could get no relief until Foley's Kidney Cure was recommended to me. It has been a Godsend to me." For sale at The Ireland Pharmacy.

### RATON-TAOS TELEPHONE LINE IN OPERATION.

Raton, N. M., Aug. 1.—Telephonic connection is now established with Taos, the line being jointly controlled by the St. Louis, Rocky Mountain and Pacific Railway and Dr. T. P. Martin, of Taos.

Let me mail you free, to prove merit, samples of my Dr. Shoop's Restorative, and my Book on either Dyspepsia, the Heart, or the Kidneys. Address me, Dr. Shoop, Racine, Wis. Troubles of the Stomach, Heart or Kidneys, are merely symptoms of a deeper ailment. Don't make the common error of treating symptoms only. Symptom treatment is treating the result of your ailment, and not the cause. Weak Stomach nerves—the inside nerves—means Stomach weakness, always. And the Heart, and Kidneys as well, have their controlling or inside nerves. Weaken these nerves, and you inevitably have weak vital organs. Here is where Dr. Shoop's Restorative has made its fame. No other remedy even claims to treat the "inside nerves." Also for bloating, biliousness, bad breath or complexion, use Dr. Shoop's Restorative. Write for my free Book now. Dr. Shoop's Restoratives sold by the Fischer Drug Company.

### Warning.

If you have kidney and bladder trouble and do not use Foley's Kidney Cure, you will have only yourself to blame for results, as it positively cures all forms of kidney and bladder diseases. For sale at The Ireland Pharmacy.

### Men Past Sixty in Danger.

More than half of mankind over sixty years of age suffer from kidney and bladder disorders, usually enlargement of prostate glands. This is both painful and dangerous, and Foley's Kidney Cure should be taken at the first sign of danger, as it corrects irregularities and has cured many old men of this disease. Mr. Rodney Burnett, Rockport, Missouri writes: "I suffered with enlarged prostate gland and kidney trouble for years and after taking two bottles of Foley's Kidney Cure I feel better than I have for twenty years, although I am now 91 years old." For sale at The Ireland Pharmacy.

Free Samples or "Preventics" and a booklet on Colds will be gladly mailed you, on request, by Dr. Shoop, Racine, Wis., simply to prove merit. Preventics are little Candy Cold Cure tablets. No Quinine, no Laxative, nothing harmful whatever. Preventics prevent colds—as the name implies—when taken early, or at the "Sneeze Stage." For a seated cold or LaGrippe, break it up safely and quickly with Preventics. Sold by the Fischer Drug Company.

Victims of hay fever will experience great benefit by taking Foley's Honey and Tar, as it stops difficult breathing immediately and heals the inflamed air passages, and even if it should fail to cure you it will give instant relief. The genuine is in a yellow package. For sale at The Ireland Pharmacy.

Piles get quick and certain relief from Dr. Shoop's Magic Ointment. Please note it is made alone for Piles, and its action is positive and certain. Itching, painful, protruding or blind piles disappear like magic by its use. Large nickel capped glass jars, 50 cents. Sold by the Fischer Drug Company.

Call at our store, please, for a free sample of Dr. Shoop's "Health Coffee." If real coffee disturbs your Stomach, your Heart, or Kidneys, then try this Clever Coffee Imitation. While Dr. Shoop has very closely matched Old Java and Mocha Coffee in flavor and taste, yet he has not even a single grain of real Coffee in it. Dr. Shoop's Health Coffee Imitation is made from pure toasted grains or cereals, with Malt, Nuts, etc. You will surely like Health Coffee. Sold by the Cartwright-Davis Company.

What a New Jersey Editor Says. M. T. Lynch editor of the Phillipsburg, N. J., Daily Post writes: "I have used many kinds of medicines for coughs and colds in my family but never anything so good as Foley's Honey and Tar. I cannot say too much in praise of it." For sale by The Ireland Pharmacy.

**Every Woman** is interested and should know about the wonderful **MARVEL Whirling Spray**. The new Vaginal Syringe. Best—Most convenient. It cleanses instantly.

Ask your druggist for it. If he cannot supply the MARVEL, accept no other, but send stamp for illustrated book—sealed. It gives full particulars and directions invaluable to ladies. **MARVEL CO.** 64 East 84th Street, NEW YORK.

**\$10 SINGERS \$10**

FOR SALE

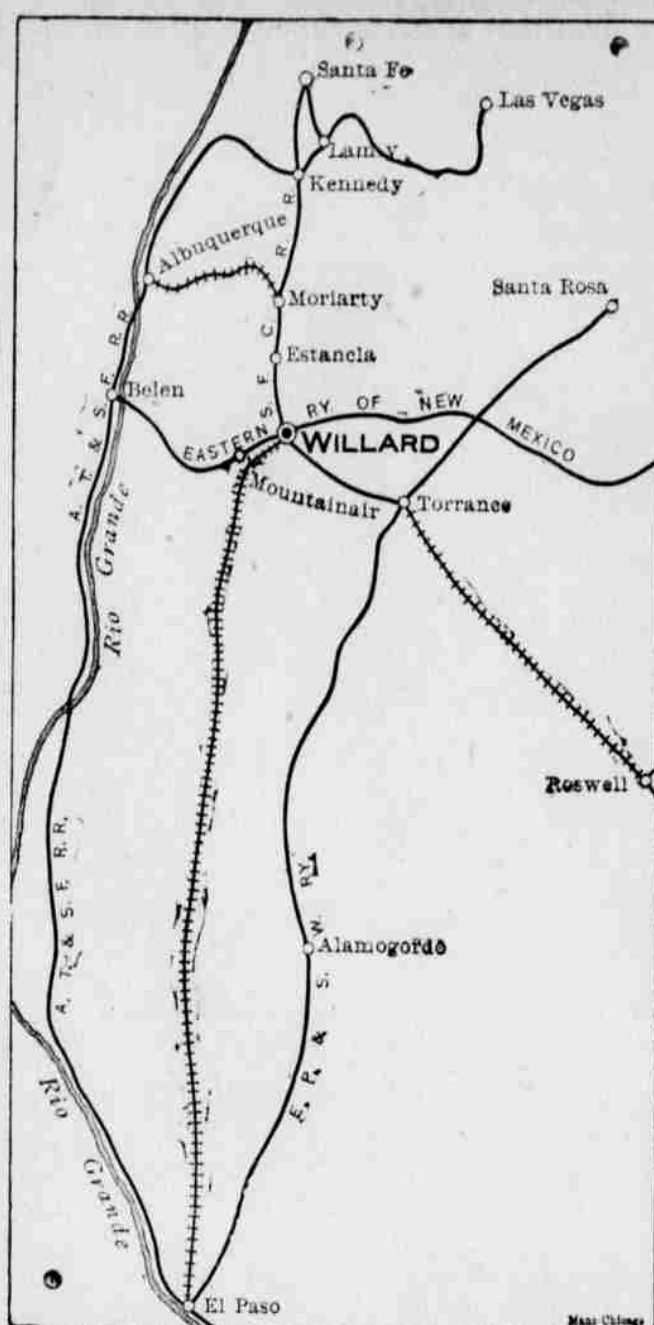
**TWO SINGER SEWING MACHINES** (SECOND HAND)

**PRICE \$10**

Call Early At

**SINGER STORE.**

## Willard is Growing Fast



## A Natural Commercial Center

### STUDY THE MAP.

The natural point on the new A. T. & S. F. Cut-off for the distribution of freight, having the advantage of the easy grades and short route to the East and West, and direct communication with all points in the Territory.

Wholesale houses are coming to Willard as soon as the Cut-off is open. Surrounded by a fine farming country. The purest water in New Mexico. The geographical center of Torrance County and of New Mexico. The water point on the great A. T. & S. F. short line through New Mexico. Willard is a growing town. Willard will make a City. Study the Map. Your opportunity is there.

For information, call on or address  
FRANK L. WALRATH, REAL ESTATE,  
WILLARD, N. M.

## Santa Fe Livery Stable

THEODORE CORRICK Proprietor.

## LIVERY, BOARDING AND FEED STABLE

FIRST-CLASS CARRIAGE SERVICE

GOOD SADDLE HORSES

FINE RIGS

PHONE 132. 120 SAN FRANCISCO ST.

## ADOLPH SELIGMAN

Special Summer Sale of

## LADIES MUSLIN UNDERWEAR

White Goods, Laces and Embroideries.

## ADOLPH SELIGMAN

## A. F. Spiegelberg.

257 San Francisco Street.

## Indian and Mexican Wares and Curios

Blankets, Baskets, Rag, Wax, Feather and Linen Drawn Work, Opals, Turquoise, Garnets and Other Gems.

OUR MOTTO: To Have the Best of Everything in Our Line.

### "A SPECIAL"

For sick folks. Your attention is called to the fact that our whiskey is bought in bond and purity is absolutely guaranteed.

Telephone 94. THE CLUB.

Blank certificates of births and deaths required to be furnished by physicians, midwives, nurses and other attendants at such occurrences, for sale at the New Mexican Printing Office. Low rates and in quantities to suit. Either in the English or Spanish languages. All orders will receive prompt attention.

### HO FOR CLIFF DWELLERS

Parties outfitting for the Cliff Dwellings should not forget a basket of liquid refreshments. No charge for packing.

Telephone 94. THE CLUB.

The New Mexican Printing Company claims to do the best printing and binding in the Territory—says it makes a specialty of better grades of printing and binding—caters particularly to people who want something a little out of the ordinary or a little better than the average—does not claim to be the cheapest in the Territory, but does claim that its work is always worth the price asked for it, and this price is based on accurate knowledge of the cost of material and skilled labor; communicate with the Company in regard to the next lot of printing. Address The New

## NEW MEXICO MILITARY INSTITUTE

ROSWELL, NEW MEXICO.

### THE MILITARY SCHOOL OF NEW MEXICO

Established and Supported by the Territory.

**RIGHT MEN INSTRUCTORS**, all graduates of Standard Eastern Colleges. New buildings, all furnishings and equipments, modern and complete; steam-heated, electric-lighted, baths, water-works, all conveniences.

**TUITION, BOARD and LAUNDRY**, \$250 per session. Session is three terms of thirteen weeks each.

**ROSWELL** is a noted health resort, 3,700 feet above sea-level; well-watered. Sunshine every day from September to June.

**REGENTS**—Nathan Jaffe, W. M. Reed, W. M. Atkinson, W. A. Finlay and E. A. Cahoon  
For particulars address **COL. J. W. WILLSON, Supt.**

## OJO CALIENTE HOT SPRINGS.

These Celebrated Hot Springs are located in the midst of the Ancient Cliff Dwellers, twenty-five miles west of Taos, and fifty miles north of Santa Fe, and about twelve miles from Baranca Station, on the Denver & Rio Grande Railway, from which point a daily line of stages runs to the springs. The temperature of these waters is from 90 to 123 degrees. The gases are carbonic. Altitude, 6,000 feet. Climate very dry and delightful the year round. There is now a commodious hotel for the convenience of invalids, and tourists. People suffering with consumption, cancer, and other contagious diseases, are not accepted. These waters contain 1,686.24 grains of alkaline salts to the gallon, being the richest alkaline Hot Springs in the world. The efficacy of these waters has been thoroughly tested by the miraculous cures attested to in the following diseases: Paralysis, Rheumatism, Neuralgia, Malaria, Bright's Disease of the Kidneys, Syphilis, Catarrh, La Grippe, all Femal Complaints, etc., etc. Board, lodging and bathing \$2.50 per day; \$15 per week; \$50 per month. Stage meets Denver trains and waits for Santa Fe train upon request. This resort is attractive at all seasons and is open all winter. Passengers for Ojo Caliente can leave Santa Fe at 9 a. m., and reach Ojo Caliente at 4 p. m. the same day. Fare for round trip from Santa Fe to Ojo Caliente, \$7.40. For further particulars, address

**ANTONIO JOSEPH, Proprietor.**

Ojo Caliente, Taos County, N. M.

## DIAMONDS H. C. YONTZ WATCHES

RIGHT PRICES  
RIGHT GOODS  
RIGHT SERVICE

Manufacturer of  
**MEXICAN FILIGREE JEWELRY**

Eyes Tested and  
Fitted by Up-to-  
Date Methods

CUT GLASS, CHINA AND SILVERWARE  
246 San Francisco St. Santa Fe, N. M.

## OUR PLACE

**OTTO RETSCH, Proprietor.**

PABST'S BLUE RIBBON—The Beer of Quality.  
ANY QUANTITY—FROM A PINT UP.

**Fine Wines, Liquors and cigars.**

WEST SIDE OF PLAZA : : : SANTA FE, N. M.

## J. W. MAYES & COMPANY FIRE, LIFE AND ACCIDENT INSURANCE

**AGENCY AMERICAN SURETY CO.**  
**Surety Bonds**

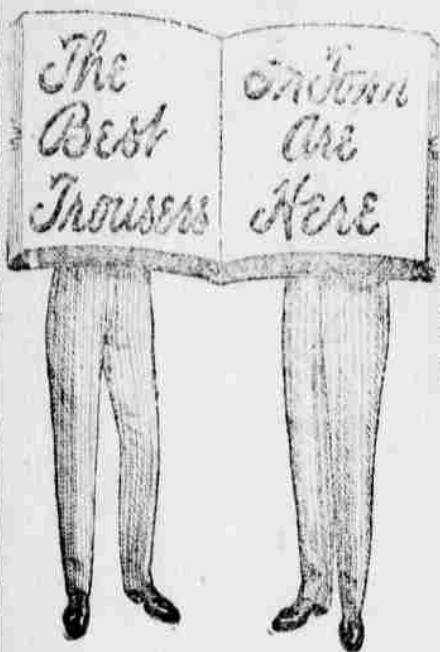
**Judicial and Fidelity Bonds**

Laughlin Block

SANTA FE, N. M.



## THE GREAT SWEET ORR TROUSERS



It is not only Advertising that made the SWEET ORR TROUSERS, Famous. It is the fit, durability and the satisfaction. We carry a full line of them and they will be sold at a low price. Try a pair and you will be convinced.



## Swell dressers SHOUT for "LAMM" TAILORING

Our values in woollens are unexcelled—in fact they are the best on the market, and yet we are not high-priced. If you want to be in line for the Fourth of July with the swellest and nobbiest suit you ever owned, come now. Save money by taking advantage of this 15 per cent reduction while it lasts.

## NATHAN SALMON

THE LARGEST AND MOST UP-TO-DATE DRY GOODS HOUSE IN THE CITY

## PERSONAL MENTION

D. J. Aber, surveyor and civil engineer, with residence at Tucumcari, is in town on professional business.

Mrs. H. P. Flint left today for Alamogordo, where she will visit her parents. She will be absent several weeks.

Hon. Amado Chavez, of Albuquerque, who has been in Rio Arriba County on legal business, returned home last evening.

J. L. Trujillo and Frank Trujillo, farmers in the vicinity of Barranca, Rio Arriba County, arrived in the city last evening.

H. LeBosquet, a cattle man having a ranch near Folsom, returned to his home yesterday after spending a few days in Santa Fe.

M. D. Esquibel, sheep raiser, with residence at Tierra Amarilla, and wife, reached town last evening, and registered at the Claire Hotel.

Judge Henry L. Waldo, of Las Vegas, solicitor for the Santa Fe Railway, was a guest at the Palace today. He visited the city on legal business.

George H. Van Stone, of Estancia, manager of the Hughes Mercantile Company, was a visitor yesterday and today in Santa Fe. He came on business.

Manuel R. Otero, register of the United States land office in this city, has returned after a vacation of two weeks which he spent in California coast resorts.

Mrs. J. C. Heberer of Topeka, Kansas, is expected to arrive in the city tonight on a visit to her son, Milton J. Heberer, undertaker for the Wagner Furniture Company.

George T. Pearth, superintendent of the Yankee Fuel Company's coal mines in Colfax County, spent yesterday in the city on business. He returned home this morning.

Mrs. J. F. Bonham of Las Cruces, left for her home today after a three weeks' visit in the Capital as the guest of her son, Herbert P. Flint, assistant secretary of the Territory.

W. Tremaine Wilson, a mining expert formerly of Goldfield, Nevada, is a recent arrival in Santa Fe. He is a representative of the American Mines, Limited. Mr. Wilson may decide to locate in this city.

Judge J. C. Northeutt, of Trinidad, Colorado, general attorney for the Yankee Fuel Company and associated corporations, who has been in the city several days on legal business, returned home this morning.

Miss Alexia Durant, of Minneapolis, Minnesota, who has been a sojourner at the Valley Ranch on the Upper Pecos for the past few months, returned to the ranch this morning after a several days' visit to this city.

Francis C. Wilson arrived in the city yesterday from Washington, D. C., and has taken apartments at St. Vincent's Sanitarium. He has been appointed as successor to A. M. Bergere as clerk of the First Judicial District Court.

Santiago Madrid, a prominent sheep grower of Torrance County, whose home is near Duran, reached the city yesterday and looked after business affairs today in the Capital. He is county commissioner of the first district of Torrance County.

Miss Beulah Duncan, daughter of J. S. Duncan of Las Vegas, has arrived in the Capital and will spend a couple of weeks here as the guest of Miss Richie Seligman and Miss Florence Spitz. The three were classmates together at Wolf Hall at Denver. This week Miss Duncan is a house guest at the Seligman home.

T. J. Tonge formerly superintendent of motive power of the Santa Fe Central Railway has gone to Santa Rosa where he has accepted a position as master mechanic on the El Paso and Southern Railway. His family will reside in this city for a month or two longer.

J. A. Baker, formerly of Jicomuleo, Mexico, where he was master mechanic of the Mexican Central Railway, arrived last night in Santa Fe. He has been offered the position of superintendent of motive power of the Santa Fe Central Railway which he has now under advisement.

W. E. Gortner, court stenographer



## Why suffer with pain when BALLARD'S SNOW LINIMENT WILL CURE

RHEUMATISM, CUTS, OLD SORES, SPRAINS, WOUNDS, STIFF JOINTS, NEURALGIA, SCALDS, ETC.,

G. A. Friedel, Dallas, Tex. writes: "I use Ballard's Snow Liniment for my family. It is the best Liniment made. It relieves burns and scalds."

25c, 50c and \$1.00

Ballard Snow Liniment Co. ST. LOUIS, MO.

Sold and Recommended by FISCHER DRUG CO.

of the Fourth Judicial District Court, has returned to his home at Las Vegas after an extended visit to his old home at Goshen, Indiana. He was accompanied on his return by Miss Beck, who will be a guest at the Gortner home for the remainder of the summer.

John L. Cowan, journal and magazine feature story writer, and A. B. Craycraft, left this morning bright and early for the Pajarito Cliff Dwellings and Communal Houses, thirty miles west of this city. During the trip Mr. Cowan will gather information and material for articles descriptive of the Cliff Dwellings and the antiquities in that region and also secure photographic views. They expect to return Saturday forenoon.

(Continued on Page Eight.)

DeWitt's Carbolized Witch Hazel Salve penetrates the pores and heals quickly. Sold by The Ireland Pharmacy.

The New Mexican Printing Company is prepared to furnish cards de visite for ladies or gentlemen on short notice, in first class style at reasonable prices, either engraved or printed. Call on the New Mexican Printing Co.

If you cannot afford to pay for a daily paper, subscribe for the Weekly New Mexican Review and get the "cream of the week's doing." It is a "good paper" to send to your friends.

Letter heads, bill heads, note heads, envelopes, of all sizes printed and sold by the New Mexican Printing Company. Subscribe for the Daily New Mexican and get the news.

Butchers' shipping certificates, such as are required by law, printed in blank form by the New Mexican Printing Company.

Subscribe for the Daily New Mexican and get the news.

A well decorated window makes good showing to people taking in the sights, but advertising your wares in the New Mexican makes a better showing and attracts more attention.

The New Mexican Printing Company keeps on hand a large assortment of blanks are carefully prepared in accordance with statute and will be found satisfactory. Reductions in prices are made to those who purchase in quantity. Blanks necessary in making homestead entries, or final proof thereon, coal declaratory statements and in securing mining claims also kept in stock and for sale by the New Mexican Printing Company.

The New Mexican can do printing equal to that done in any of the large cities. Our solicitor: Every piece of work we turn out. Try our work once and you will certainly come again.

The New Mexican Printing Company is prepared to furnish cards de visite for ladies or gentlemen on short notice, in first class style at reasonable prices, either engraved or printed. Call on the New Mexican Printing Company.

The New Mexican Printing Company has the largest, most modern, and best arranged book bindery in the Southwest. The best kind of work only turned out. Prices very low and satisfaction guaranteed. If you have books to bind, whether the largest ledger or journal, or magazines and pamphlets or need any other binding call for figures, samples and prices of the New Mexican Printing Company. The company is anxious to serve you and will give you satisfactory rates.

Butchers' shipping certificates, such as are required by law, printed in blank form by the New Mexican Printing Company.

ESTABLISHED 1856.

INCORPORATED 1903.

## SELIGMAN BROTHERS CO.

## SPECIAL MID-SUMMER SALE Commencing Monday July 1

A Great Reduction will be Made on Following Goods

LINGERIE SHIRT WAISTS  
LADIES' HATS WHITE PARASOLS  
MISSES READY MADE DRESSES  
LADIES, MISSES AND CHILDREN'S  
WHITE CANVASS OXFORDS  
FIGURED LAWNs AND DIMITIES  
MEN'S CLOTHING

MEN'S STRAW HATS

## SELIGMAN BROS. CO.

P. O. Box 219. — Phone No. 36.

For Half a Century the Leading Dry Goods House in the City.

## CHARLES WAGNER Furniture Company.

New Lot of Iron and Brass Beds Upholstered Furniture, Dressing Tables, Couches, Baby Buggies, Ranges and Desks, Etc., Just Received.



## EMBALMING AND UNDERTAKING A SPECIALTY.

306-S San Francisco St. Phone 10.  
Night Call Phone No. 1.



PRICE \$3.00.

When You Want to Buy, Sell or Exchange

## HOUSEHOLD GOODS

Keep Busy Until You Find

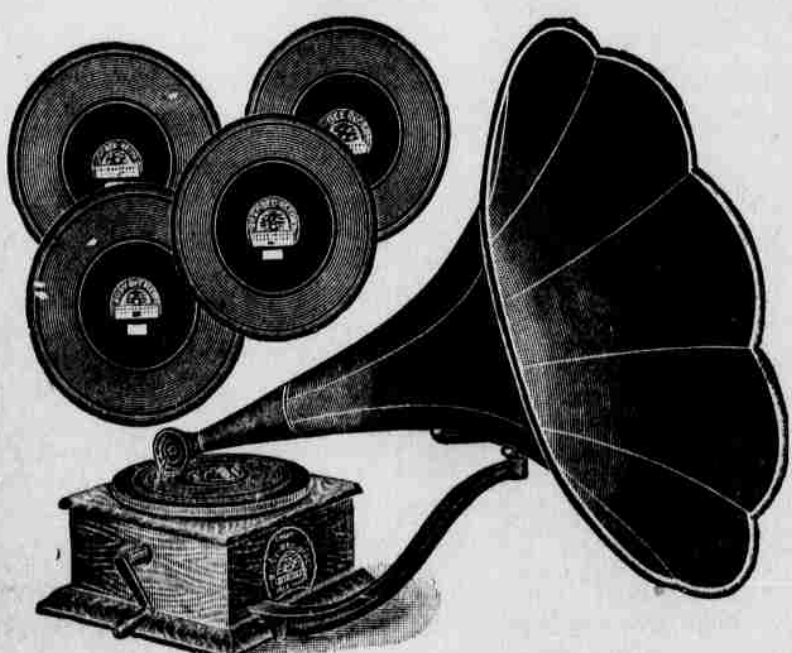
D. S. LOWITZKI

Goods Sold on Easy Payments. Large Stock of Picture Moulding.

## Santa Fe Concrete Block Company

Reference: Quality of Blocks Produced.  
SEE OUR NEW FACE PATTERNS

GEO. S. BLUNT, M'GR.



## FREE!

The O'Neill-James Co. of Chicago, the well-known dealers in Talking Machines, has placed us in a position to give to every family who trades at our store, one of the

## GRAND BUSY BEE DISC Talking Machines ABSOLUTELY FREE

This machine is equipped with all the latest improvement.

Mobley's Wonderful Sound Box and Morning Glory Horn that gives a wonderful volume of music, reproduced in the Grand Busy Bee Disc Talking Machine Free, we are going to give with additional purchases one of the Busy Bee Disc Records Free. We ask you to call and inspect our complete line of goods, and assure you full value for every dollar spent at our store.

BE SURE AND ASK FOR COUPONS.

## WOOD-DAVIS HARDWARE CO.

We are giving away one of these high grade machines Free with \$50.00 in coupons and a 7-inch record with each additional \$5.00. Call in and see this machine and hear some excellent

HARDWARE AND PLUMBING in couple  
228 San Francisco St. Santa Fe, N. M. music.



The following coupon properly filled out, will bring you our complete Talking Machine literature, illustrating the different styles of machines, giving titles of the thousands of Victor Records, bands, songs, stories, solos, etc. Also quoting prices and telling of our liberal plan of selling machines on easy payments. Fill in, cut it out, and mail today.

THE KNIGHT-CAMPBELL MUSIC COMPANY,  
1625-31 California Street,  
Denver, Colo.

Gentlemen:—You may send me your illustrated Talking Machine literature, as per your advertisement in the Daily and Weekly Santa Fe New Mexican.

Name.....

Address.....



## GREAT REDUCTION AT EHLE'S HABERDASHERY

Summer goods at astonishingly Low Figures---Prices reduced on underwear without regard to cost price--Get your share of the good things offered---Come and Examine our offerings---Quality and price will make the sale.

Summer Hats and Ties at Practical-ly Your Own Prices.

SUITS TO ORDER THAT ARE RIGHT

### 4 Per Cent on Time Deposits

ON CERTIFICATES OF DEPOSIT AND SAVINGS ACCOUNTS.

Place your account with us NOW, and when, a little later on, you may want to borrow money for any purpose whatsoever, you will find us amply able and disposed to accommodate you on the very best terms and rates obtainable anywhere.

If you have valuable papers of any kind, such as deeds, notes, insurance papers, etc., why not rent one of our Safety Deposit boxes, where your papers will be safe in our fire-proof vault?



## WE COUNT YOUR GOOD WILL

much the largest asset we have in our business. To have our customers say to their friends, "Every statement made by S. Spitz can be relied upon" is the very best recommendation we can strive for. Reliability is our watchword and every sale we make is closed only after the purchase proves entirely satisfactory. It is a great satisfaction to buy at a store like this. Every article carries with it our guarantee.

**S. SPITZ,** Manufacturing Jeweler, Dealer in Watches, Jewelry, Diamonds.

## LIVERY STABLE

FINE RIGS. RELIABLE HORSES. SINGLE BUGGIES. SURRIES. HACKS.

CALL UP 'PHONE NO. 9

When in Need of Anything in the Livery Line. Drivers Furnished. Rates Right.

**CHAS. CLOSSON.**

### TIME TABLE ALL LINES.

Entering and Leaving Santa Fe--Compiled According to Schedule of Trains Now in Effect.

**SANTA FE CENTRAL.**  
No. 1.--Southbound leaves Santa Fe 2:00 p. m.  
No. 2.--North bound arrives Santa Fe 5:00 p. m.

**DENVER & RIO GRANDE.**  
No. 426.--Eastbound leaves Santa Fe 11 a. m.  
No. 425.--Westbound arrives Santa Fe 3:30 p. m.

**ATCHISON, TOPEKA & SANTA FE.**  
Lamy Branch.  
Arrive at Santa Fe Station.

No. 721 ..... 11:10 a. m.  
No. 722 ..... 6:50 p. m.  
No. 725 ..... 10:55 p. m.

Depart from Santa Fe Station.  
No. 720 ..... 8:25 a. m.  
No. 722 ..... 4:20 p. m.  
No. 724 ..... 7:40 p. m.  
No. 720 connects with Numbers 10 and 2 east and No. 3 limited west at Lamy.  
No. 722 connects with No. 1 west at Lamy.  
No. 1 carries El Paso sleeper.  
No. 724 connects with No. 7 and 9, westbound, and 4 and 8 eastbound.  
**Main Line Via Lamy.**  
No. 1 stops at all stations.  
No. 7 will stop at all stations, Lamy to Albuquerque to discharge passengers from Santa Fe.  
No. 721 leaves Lamy at 10:10 a. m. and will not wait for No. 2 from the west at Lamy, waiting only for No. 10 from the south and No. 3 from the east.

All the news all the time in the New Mexican.

### MINOR CITY TOPICS

"Cinderella" tonight.  
\$2.50 straw hats only 75c at Ehle's. The Guild will meet tomorrow afternoon at 2:30 o'clock with Mrs. Prince. A full attendance is desired.

It's for the benefit of the Woman's Board of Trade--the burlesque performance of "Cinderella."

Help the public library building fund by attending the amateur vaudeville show at the opera house. General admission, 50 cents, reserved seats 25 cents.

Dr. Deibel's linen wash underwear for ten days only 50c per suit at Ehle's.

"I'm Crazy About a Big Brass Band" and "San Antonio" are two distinct song hits in the vaudeville show to be given at the opera house this evening and tomorrow night for the benefit of the Woman's Board of Trade.

Edward Ehle, who is undergoing treatment at St. Vincent's Sanitarium was reported as improved today. He was able to be up and about this morning.

Wash ties were 50c now 25c. Silk ties were 75c now 50c at Ehle's.

Local fans are at a loss to understand why an effort is not being made to secure a base ball game for next Sunday. There are several good teams in the Territory that are anxious to meet the Santa Fe club.

Yesterday at the Indian pueblo of Seama, near Laguna, Valencia County, Frederick W. Canfield, of Utica, New York, was united in marriage to Miss Anna Gouyuey, a full blooded Seama Indian maiden. The marriage was the culmination of a courtship which began years ago when the bride was a pupil at the Carlisle Indian School. After a tour of the Territory the couple will go to Neah Bay, Washington, where the groom is employed in the Indian Service.

(Continued on Page Eight.)

## H. S. KAUNE & CO. GROCERS.

Try a Pail of

### CAPITAL COFFEE

Handsome Cup and Saucer in Each Pail

Per Pail \$1.00

New Breakfast Food

### WHOLE WHEAT BERRIES

10c a Package

### PRICE'S CELERY FOOD

Was 12-12 Cents.

10c a Package

### COLORADO AND CALIFORNIA FRUITS OF ALL KINDS

**H. S. KAUNE & CO.**  
'PHONE 26.

## CHAS. ILFELD CO.

LARGEST WHOLESALE HOUSE IN NEW MEXICO

Prepared to Fill Small or Large Orders for Anything in

GROCERIES, HARDWARE, IMPLEMENTS, SADDLERY  
CROCKERY, DRY GOODS, NOTIONS, BOOTS,  
SHOES, HATS, MILLINERY, CLOTHING

Compare Our Goods and Prices. We Can Supply you  
Quicker and Better Than Far-off Houses. Try Us.

## CHAS. ILFELD CO.

ALBUQUERQUE, N. M.

Main Office, LAS VEGAS, N. M.

SANTA ROSA, N. M.

### LADIES CAN WEAR SHOES.

one size smaller after using Allen's Foot-Ease, a powder to be shaken into the shoes. It makes tight or new shoes feel easy; gives instant relief to corns and bunions. It's the greatest comfort discovery of the age. Allen's Foot-Ease is a certain cure for tired, sweating, hot, aching feet. At all druggists and shoe stores, 25c. Don't accept any substitute. For FREE trial package, also Free Sample of the FOOT-EASE Sanitary CORN-PAD, a new invention, address Allen S. Olmstead, Le Roy, N. Y.

### LEGAL BLANKS.

Kept in Stock and for Sale by the Santa Fe New Mexican.

Justice of the Peace Blanks  
Appeal Bonds, Criminal, 1-2 sheet.  
Appearance Bond, 1-2 sheet.

### SEE TERMS.

Justice of the Peace Blanks  
Appearance Bond on Continuance, (J. P.), 1-2 sheet.  
Bond of Appearance, (District Court), 1-2 sheet.

Justice Quarterly Report 1-2 sheet.  
Bond to Keep the Peace, 1-2 sheet.  
Complaint Criminal, 1-4 sheet.  
Forcible Entry and Detainer, Complaint, 1-2 sheet.

Forcible Entry and Detainer, Summons, 1-4 sheet.  
Replevin Bond, 1-2 sheet.  
Execution--Forcible Entry and Detainer, 1-4 sheet.

Replevin Writ, 1-4 sheet.  
Replevin Affidavit, 1-4 sheet.  
Peace Proceedings, Complaint, 1-4 sheet.

Warrant, 1-4 sheet.  
Commitment, 1-4 sheet.  
Attachment Affidavit, 1-4 sheet.

Attachment Bond, 1-4 sheet.  
Attachment Writ, 1-4 sheet.  
Attachment Summons as Garnishee, 1-4 sheet.

Summons, 1-4 sheet.  
Subpoena, 1-4 sheet.  
J. P. Complaint, 1-4 sheet.

Capias Complaint, 1-4 sheet.  
Search Warrant, 1-4 sheet.

**Spanish Blanks**  
Auto de Arresto, 1-4 pliego.  
Auto de Prison, 1-4 pliego.

Warranty Deed, 1-2 sheet.  
Bond for Deed, 1-2 sheet.  
Official Bond, 1-2 sheet.

Bond of Indemnity, 1-2 sheet.  
Poll Book for Town Election, 1-2 pages, 40c.

or Spanish, pamphlet \$2.75; full Leather Notice of Sale Under Foreclosure of Mortgage, full sheet.

Oath of School Director, 1-4 sheet.  
Certificate of Brand, 1-4 sheet.  
Certificate of Apportionment of School Funds, 1-2 sheet.

District Clerk's Annual Report, 1-4 sheet.  
Homestead Application, 4-007, 1-2 sheet.

Sheriff's Flexible Cover Pocket Pocket, single, \$1.25; two or more \$1. each.

Declaration in Assumpsit, on Note, 1-2 sheet.

### FISH BAIT WANTED.

If going fishing next week, a very necessary part of your outfit will be a gallon or two of pure snake juice. Telephone 34. THE CLUB.

### THE NEW MEXICO

## COLLEGE OF AGRICULTURE

AND MECHANIC ARTS.

An Institution giving an intensely practical education. Supported by Federal and Territorial appropriations. Pleasantly situated in its own grounds of 400 acres in the beautiful Mesilla Valley.

Four full 4-years college courses in agriculture, mechanic arts, domestic science and general science; short courses in agriculture, stenography, and assaying--\$90,000 worth of equipment. A faculty of 40 instructors; 230 students now in attendance. Military instruction by an officer of the U. S. Army. Large Parade and athletic grounds. Commodious Girl's Dormitory, under the best management. An ideal winter climate at an altitude of 3,800 feet.

LUTHER FOSTER, President

(P. O.) Agricultural College, N. M.

## BRIGHTENS THE HOME

Perhaps you don't know we sell JAPALAC. It comes in thirteen colors, and may be used in a hundred different ways. It is tough, quick-drying, durable, elastic. Try it.

## Many New Things

In the store these days. If you drink Coffee you should have the



## Universal Coffee Percolator

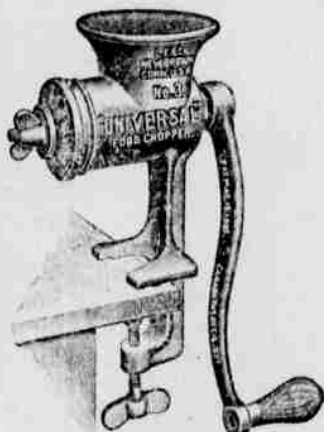
We sell it and a thousand other household needs. See us.

Remember We Are Still  
Giving Away those

## Beautiful CLOCKS

THEY ARE FREE

See Us for Particulars.



'PHONE NO. 83.

MAIL ORDERS GIVEN PROMPT ATTENTION.

Everything in Hardware



HARDWARE, QUEENSWARE, TIN AND GRANITWARE, PLUMBING, STOVES, RANGES, TENTS, COVERS AND CAMP EQUIPMENT, WAGONS AND BUGGIES, HARNESS AND SADDLERY, PAINTS, OILS, VARNISH, KALSOMINE, ALABASTINE, WALL PAPER, WINDOW GLASS, GUNS, AMMUNITION, FISHING TACKLE, BASEBALL OUTFITS, FURNITURE.

### YOU HIT THE RIGHT FEED

when you strike this establishment. We handle nothing but

FIRST-CLASS FLOUR AND FEED.

Those who have dealt with us don't have to be told how excellent our specialties are. And those who don't know our flour and feed are losing something every day they remain unacquainted. If you are one of these you should give us a trial order at once.

Sole Agency For  
INTERNATIONAL STOCK FLOUR.

## LEO HERSCH

Wholesale and Retail Dealers in  
FLOUR, HAY, GRAIN, POT ATOES, SALT AND SEEDS.  
THE ONLY EXCLUSIVE GRAIN HOUSE IN SANTA FE, NEW MEXICO.

### ICE CREAM!

I am prepared to furnish Ice Cream and Ices in any quantity. Call up 'Phone 15 or at Bacon Ice Houses for prices. If possible send in orders 24 or 48 hours in advance.

E. C. JAMES.

### HENRY KRICK

Sole Agent for

Temp's St. Louis Beer

All kinds of Mineral Waters  
And Pabst Blue Ribbon Beer.

Mail orders promptly filled. 'Phone 38.  
Montezuma Avenue, Santa Fe, N. M.

### KERR'S

## Capital - Parlors

The only first-class in city.  
Second to none in Territory.

Four first-class artists : :  
Electrical Baths . . . \$1.50

Other Baths . . . . .25

Parlors Located West Side Plaza

W. H. KERR, Proprietor

Blank Butchers' Shipping Certificates for sale by the New Mexican Printing Company.





### Santa Fe Central Rail- way Company

#### TIME TABLE

Effective Sunday, June 9, 1907.

South Bound		North Bound	
No 1	Stations.	No 2	Stations.
2:00 p. m.	Leave Santa Fe	7:00 a. m.	Arrive Santa Fe
3:10 p. m.	Albuquerque	8:00 a. m.	Albuquerque
4:15 p. m.	Stanley	9:00 a. m.	Stanley
4:45 p. m.	Moriarty	9:30 a. m.	Moriarty
5:00 p. m.	Belmont	10:00 a. m.	Belmont
5:30 p. m.	Escondido	10:30 a. m.	Escondido
6:22 p. m.	Willard	11:00 a. m.	Willard
7:50 p. m.	Arrive Torrance	11:15 a. m.	Arrive Torrance

Freight, Passenger and Steamship business.

Pullman berths secured by wire.  
Connections: At Santa Fe, with Denver & Rio Grande Railroad, and Atchison, Topeka & Santa Fe Railway. At Kennedy, with Atchison, Topeka & Santa Fe Railway. At Torrance with El Paso & Southwestern System.

S. B. GRIMSHAW,  
General Freight and Passenger Agent.

### HOTEL ARRIVALS

#### Palace.

George T. Pearth, Raton; Daniel Hayes and wife, Wichita, Kansas; Edward M. Maxwell and family, Ellen Frye, Milwaukee, Wisconsin; C. Sganzi, Richmond, Virginia; J. E. Carruth, Berkeley, California; Amado Chaves, Albuquerque; G. H. Van Stone, Estancia; Ben F. Rupp, St. Louis; C. G. Betts and wife, Chicago; H. L. Waldo, Las Vegas; F. B. Leamer, Kansas City.

#### Claire.

A. F. Jones, and wife, Ardmore, Indian Territory; H. W. Brown, Trinidad, Colorado; Charles S. Halgh, Philadelphia; J. A. Baker, Estancia; E. Stern, Las Vegas; Harvey L. Noll, Wichita, Kansas; Harold M. Hall, Denver; E. G. Coldey, St. Louis; J. G. Cooper, Shawnee, Oklahoma.

#### Normandie.

P. E. McGuire, El Paso; E. J. Linggo, St. Louis; M. D. Esquibel and wife, Tierra Amarilla; J. L. Trujillo, Frank Trujillo, Barranca; D. J. Aber, Tucumcari; John Hough, George Merrill, Boulder, Colorado; Charles Fairbanks, Memphis, Tennessee; Bernardo Ortiz, Bernalillo; F. G. Blake, Gallina; John E. Winters, Denver; William Dunlap, Pueblo; E. Martinez, D. Trujillo, Cordova.

#### Coronado.

Santiago Madrid, Duran; W. H. Richey, C. L. Burns, San Angelo, Texas; A. M. Pryor, Jr., Fort Worth, Texas.

DeWitt's Little Early Risers don't sicken or gripe. Small Pills, easy to take. Sold by The Ireland Pharmacy.

SALE OF TIMBER. Washington, D. C., June 7, 1907. Sealed bids marked outside "Bld. Timber Sale Application, April 10, 1907, Jemez," and addressed to the Forester, Forest Service, Washington, D. C., will be received up to and including the sixteenth day of August, 1907, for all the merchantable dead timber, standing and down, and all the live timber marked for cutting by the forest officers, on a certain area of about 45 acres to be designated by the forest officers, located on the north side of North Deer Trail Canon, in approximately parts of Secs. 26 and 32, T. 29 N., R. 7 E., N. M. P. M. within the Jemez National Forest, New Mexico, estimated to be 170,000 feet, B. M. log scale, of live yellow pine, white fir and Douglas fir and 15,000 feet B. M. log scale, of dead timber, more or less. No bid of less than \$3 per M. feet B. M. will be considered, and a deposit of \$100 must be sent to Geo. E. King, Fiscal Agent, Forest Service, Washington, D. C., for each bid submitted to the Forester. Timber upon valid claims is exempted from sale. The right to reject any or all bids is reserved. For further information and regulations governing sales address Rose McMillan, Forest Supervisor, Santa Fe, New Mexico.  
E. E. CARTER,  
Acting Forester.

Orino Laxative Fruit Syrup is sold under a positive guarantee to cure constipation, sick headache, stomach trouble, or any form of indigestion. If it fails, the manufacturers refund your money. What more can any one do? For sale by The Ireland Pharmacy.



To Denver, Colorado Springs and Pueblo, Colorado, and Return.  
To Denver and return, \$21.10.  
To Colorado Springs and return, \$18.15.  
To Pueblo and return, \$16.35.  
On sale until September 30, 1907.  
Final return, October 31, 1907.  
Stop-overs allowed at and east of Pueblo.  
Summer Tourist Rates to Chicago and St. Louis and Return.  
To Chicago and return, \$54.75.  
To St. Louis and return, \$48.10.  
On sale daily until September 30, 1907. Final return limit October 31, 1907.  
Los Angeles and San Francisco, California, and Return, Tuesdays, Thursdays and Saturdays.  
On sale until September 30, 1907.  
To Los Angeles and return, \$41.90.  
To San Francisco and return, \$51.90.  
Final return limit November 30, 1907. Stop-overs allowed anywhere west of Barstow, California. Continuous passage up to Barstow. Jamestown Exposition, Norfolk, Virginia, April 26 to Nov. 30, 1907.  
Season ticket, \$88.25.  
Sixty-day ticket, \$73.60.  
Fifteen-day ticket, \$57.25.  
On sale until September 30, 1907. Final return limit on all tickets except 15-day tickets, Nov. 30, 1907; 15-day ticket Nov. 20, 1907.  
Round trip summer tourist rates to Pacific Coast points. Also Arizona, British Columbia, Idaho, and Montana points. Very low rates effective daily until September 15, 1907.  
G. H. DONART,  
Agent A. T. & S. F. Ry.

**A DYSPPEPTIC'S HORROR.**  
Is solid food, in nine cases out of ten, however, if the man with a weak stomach would take a glass or two of Dr. Lauritzen's Health Table Malt with each meal, he would soon find that he could eat anything. It's the best tonic in the world for a weak stomach.  
H. S. KAUNE & CO.  
CITY BOTTLING WORKS, Phone 38.

TO AND FROM ROSWELL.  
Connection made with Automobile Line at Torrance for Roswell daily. Automobile leaves Torrance for Roswell at 4 a. m., and arrives at Roswell at 12 noon. Automobile leaves Roswell for Torrance at 1 p. m., and arrives at Torrance at 10 p. m. The fare between Santa Fe and Torrance is \$5.80 and between Torrance and Roswell \$10. Reserve seats on automobile by wire.

J. W. STOCKARD,  
Manager Automobile Line.

**TEN MINUTES' WALK FROM PLAZA.**  
San Miguel's Church.—On College Street. Believed to be oldest church building in the United States still used for public worship. Built either in 1598 or 1607. Destroyed in 1692. Rebuilt in 1710. Renovated in recent years. In rear of auditorium stands bell cast in Spain in fourteenth century. Vespers Sunday evenings at 6.

**THE CAPITOL.** Dedicated 1900 replacing that destroyed by incendiaries in 1892. All territorial offices and territorial library in building. Fine view of city and mountains from dome. In Capitol park are to be found larger variety of trees than in any other park in New Mexico.

**THE GARITA.** On the hill below and west of Fort Marcy. Ancient Spanish fortress along walls of which malefactors and traitors were executed. Adjoining oldest cemetery in the United States.

**THE KERNY MONUMENT.**—In Plaza. Erected by the Daughters of the American Revolution.

**Masonic Building and Hall.**—On south side of Plaza. Oldest Masonic Lodge in the Southwest. Many interesting historic relics in lodge room. Kit Carson was a member of this lodge.

**The Fonda.**—At southwest corner of Plaza. End of the historic Santa Fe Trail. Now Exchange Hotel.

**WITHIN FIVE MINUTES' WALK FROM PLAZA.**  
Public Library.—On Washington Avenue. Built and maintained by the Woman's Board of Trade.

**Federal Building.**—Headquarters of Federal Land Office, Internal Revenue Service for New Mexico and Arizona, Surveyor General, Weather Bureau, Forest Supervisor of Pecos, Jemez and Taos National Forests, U. S. Attorney

(Continued on Page Seven)

### ST. LOUIS, ROCKY MOUNTAIN & PACIFIC RAILWAY CO

#### PASSENGER SCHEDULE



Wells Fargo Express

Train No. 31 Mon. Wed. Friday	Train No. 1 Daily	Distance from Raton	STATIONS	Train No. 2 Mon. Wed. Friday	Train No. 30 Mon. Wed. Friday
7:00 am	4:00 pm		Leaves Raton	12:15 pm	6:35 pm
7:25 am	4:25 pm		Arrives CLIFTON HOUSE Jct	11:57 am	6:15 pm
7:50 am	4:50 pm		Leaves CLIFTON HOUSE Jct	11:40 am	6:00 pm
8:20 am	5:20 pm	20	Arrives PRESTON	11:00 am	5:45 pm
			Leaves PRESTON	11:27 am	
			Arrives KOEHLER Jct		
			Leaves KOEHLER Jct		
		23	Arrives KOEHLER	11:10 am	
9:10 am	5:50 pm	33	Leaves KOEHLER	10:15 am	4:05 pm
9:35 am	6:15 pm	41	Arrives VERMEJO	9:58 am	3:45 pm
10:10 am	6:30 pm	47	Leaves VERMEJO	9:35 am	3:15 pm
11:30 am		60	Arrives CIMARRON	2:40 pm	1:40 pm
12:20 pm			Leaves CIMARRON		
			Arrives UTE PARK		

Trains Nos. 17 and 20 Tues. Thurs. Saturday	Distance from Des Moines	STATIONS	Trains Nos. 18 and 19 Tues. Thurs. Saturday
7:00 am	49	Leaves Raton	2:20 pm
7:30 am	42	Leaves CLIFTON HOUSE JUNCTION	2:00 pm
8:15 am	31	Leaves CUNNINGHAM	1:15 pm
8:30 am	25	Leaves THOMPSON	12:40 pm
8:45 am	22	Leaves VIGIL	12:25 pm
9:25 am	11	Leaves CAPULIN VEGAS	11:40 am
10:00 am		Arrives DES MOINES	11:00 am

Connects with El Paso & Southwestern Ry. train 124, arriving in Dawson, N. M., at 6:10 p. m.  
Connects with El Paso & Southwestern Ry. train 123, leaving Dawson, N. M., at 10:05 a. m.  
Stage for Van Houten meets trains at Preston, N. M.  
Connects with A. T. & S. F. trains Nos. 1, 7 and 9. W. A. GORMAN, Gen. Pass. Agt., Raton, New Mexico.

### DIRECT ROUTE

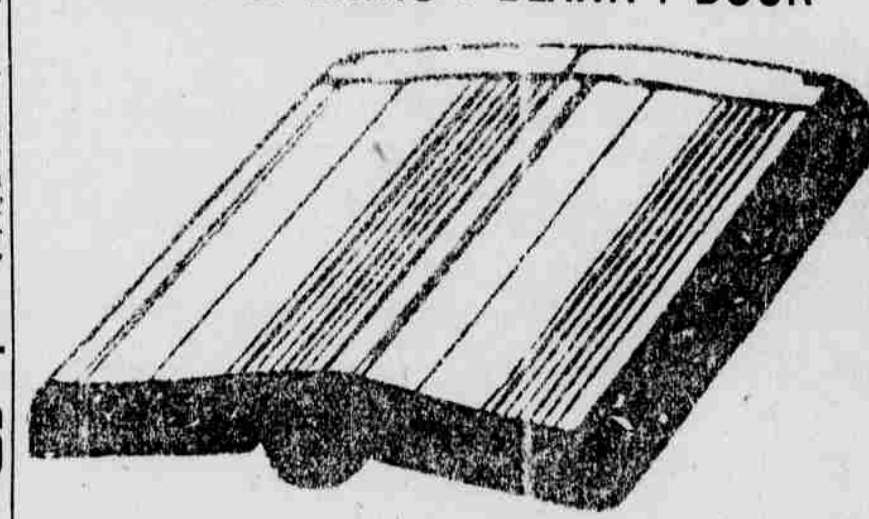
TO  
The Mining Camps of Colorado, Utah and Nevada;  
To Denver, Colorado Springs and Pueblo is Via the

### Denver & Rio Grande Railway

Through the fertile San Luis valley; also to the San Juan country of Colorado.  
For information as to rates, train service, descriptive literature, etc., call on or address

S. K. HOOPER, G. P. & T. A., Denver, Colo. F. H. McBRIDE, Agent, Santa Fe, N. M.

### FLAT : OPENING : BLANK : BOOK



(FRAY PATENT)  
NEW MEXICAN PRINTING CO., SOLE MAKERS FOR NEW MEXICO.

### CHARLES W. DUDROW

#### Lumber, Sash, and Doors

ALL KINDS OF BUILDING MATERIAL  
Cord and Stove Wood Extra Dry, Cut to Fit Your Stove  
CERRILLOS COAL Delivered to Any Part of the City  
TRANSFER and STORAGE; We Haul Everything Movable  
Phone 35 Santa Fe. Branch Office and Yards at Cerrillos, N. M.

### WHEN in need of anything on Earth try a

NEW MEXICAN WANT AD.  
It will positively bring results.

### H. B. Cartwright & Bro.,

#### WHOLESALE GROCERS

Grain, Flour and Potatoes, Stationery, Patent Medicine and Grocers' Sundries.  
PROMPT ATTENTION GIVEN MAIL ORDERS

SANTA FE, N. M.

INCORPORATED

HOWLAND & DEWEY COMPANY,  
126 S. Spring St. Los Angeles, Cal. 610 S. Broadway

Kodaks and Photo Supplies  
ART PICTURES AND FRAMING

We make a specialty of DEVELOPING, PRINTING and ENLARGING. Mail Orders Given Prompt Attention. Send for Catalogue.

HOWLAND & DEWEY COMPANY,  
126 S. Spring St. Los Angeles, Cal. 610 S. Broadway

Read the New Mexican if you want the news.

### Our Cylinder Records

Fit Any Cylinder Machine

X. P. Cylinder Records 25 cents each. \$3.00 per dozen.

HALF FOOT CYLINDER RECORDS 50c Each.

\$5.00 Per Dozen

Cylinder Machines. Range in Price from \$7.50 to \$125.00



### OUR DISC RECORDS

FIT ANY DISC MACHINE

10-inch Disc Records 60 cents each. \$7.20 per Dozen.

12-inch Disc Records \$1 each. \$10 per Dozen.

Disc Machines range in price from \$12.50 to \$100.00.

ALL MACHINES GUARANTEED.

IT WILL PAY YOU TO INVESTIGATE OUR EASY PAYMENT PLAN.

COLUMBIA PHONOGRAPH CO. ADDRESS.

505-507 16th Street, Denver, Colo. Mail Order Departments.

### FRATERNAL SOCIETIES

#### MASONIC.



Montezuma Lodge, No. 1, A. F. & A. M. Regular communication first Monday of each month at Masonic Hall at 7:30 p. m.  
R. H. HANNA, W. M.  
ALAN R. McCORD, Sec'y.



Santa Fe Chapter, No. 1, R. A. M. Regular convocation second Monday of each month at Masonic Hall at 7:30 p. m.  
S. SPITZ, H. P.  
ARTHUR SELIGMAN, Sec'y.



Santa Fe Commandery No. 1, K. T. Regular convocation second Saturday in each month at Masonic Hall at 7:30 p. m.  
C. J. CRANDALL, E. C.  
H. F. STEPHENS, Recorder.

Santa Fe Lodge of Perfection No. 1, 14th degree, Ancient and Accepted Scottish Rite of Free Masonry meets on the third Saturday of each month at 7:30 o'clock in the evening in Masonic Hall, south side of Plaza. Visiting Scottish Rite Masons are cordially invited to attend.

CHARLES A. WHEELON, 32, Venerable Master.  
HENRY F. STEPHENS, 14, Sec.

#### I. O. O. F.

Santa Fe Lodge, No. 2, I. O. O. F., meets every Thursday evening in Odd Fellows' Hall, San Francisco Street. Visiting brothers welcome.

MAX KALTER, N. G.  
LEO HERSCH, V. G.  
DAVID L. MILLER, Sec'y.

#### B. P. O. E.

Santa Fe Lodge, No. 460, B. P. O. E., holds its regular session on the second and fourth Wednesdays of each month. Visiting brothers are invited and welcome.  
R. H. HANNA, E. R.  
J. D. SENA, Sec'y.

#### FRATERNAL UNION.

Santa Fe Lodge, No. 259, Fraternal Union of America. Regular meetings first and third Mondays in each month at 8 o'clock p. m., Odd Fellows' Hall, San Francisco Street. Visiting Fraternal Union members are welcome.

M. E. ORTIZ, Fraternal Master.  
GREGORIO RAEI, Treas.  
DAVID GONZALES, Sec'y.

#### "GOOD ROOMS."

You can get a good room at the Hotel Normandie at a very moderate price, either by the week or month. You will be gained by calling there, before engaging rooms elsewhere.

Read the New Mexican if you want the news.

### SIGHTS OF SANTA FE

(A brief outline of Points of Interest in and about the City of Santa Fe. A Guide for Tourists.)  
(July, 1907.)

**The Plaza.**—Under the care of the Woman's Board of Trade. Here Onate camped and set up the banner of Spain in 1598. Here the Pueblos in the uprising of 1680 burned the archives and historical records of the Province. Here De Vargas halted in triumph after taking the city from the Pueblos in 1692. Here General Kearny planted the Stars and Stripes in 1846. Most of the thrilling historical and gala events for the past three hundred years have centered here.

**The Old Palace.**—Without doubt the oldest governmental building in the United States. Date of construction variously set from 1598 to 1607. Occupied as executive building by Governors under the Spanish, the Pueblo, the Mexican and American regime, last occupied as a residence by the present Acting Governor James Wallace Reynolds. Ceded by the Federal government to the Territory, the present owner, but which has voted to recede it to the Federal government as a National Monument. It is at present occupied by the postoffice, the Historical Society Museum, the Daughters of the American Revolution and the Territorial Republican Central Committee.

**The Historical Society Museum.**—In Old Palace. Open free to visitors, from 10 to 12 a. m. and 2 to 4 p. m. on weekdays, and 2 to 4 p. m. on Sundays. Contains fine collection of New Mexico antiquities and the most complete library of books relating to the history of the Southwest to be found in the United States outside of the Congressional Library.

**Ben Hur Room.**—In Old Palace. Here Lew Wallace, while Governor of New Mexico, completed Ben Hur. Key given to visitors at the postoffice.

**Soldiers' Monument.**—In Plaza. Erected by the Territory. Much criticized because it refers to the Confederates as Rebels.

**Lamy Fountain.**—In Plaza. Erected by the Daughters of the American Revolution.

**Masonic Building and Hall.**—On south side of Plaza. Oldest Masonic Lodge in the Southwest. Many interesting historic relics in lodge room. Kit Carson was a member of this lodge.

**The Fonda.**—At southwest corner of Plaza. End of the historic Santa Fe Trail. Now Exchange Hotel.

**WITHIN FIVE MINUTES' WALK FROM PLAZA.**

**Public Library.**—On Washington Avenue. Built and maintained by the Woman's Board of Trade.

**Federal Building.**—Headquarters of Federal Land Office, Internal Revenue Service for New Mexico and Arizona, Surveyor General, Weather Bureau, Forest Supervisor of Pecos, Jemez and Taos National Forests, U. S. Attorney

for the Pueblo Indians, and other Federal officials.

**Kit Carson Monument.**—In front of Federal building.

**The Court House.**—On Palace Avenue. Contains County Offices and Court Rooms.

**Saint Vincent's Sanitarium.**—On Palace Avenue.

**Saint Vincent's Orphans' Home.**—On Palace Avenue.

**Saint Vincent's Hospital.**—On Palace Avenue.

**Loretto Academy.**—On College Street. Oldest School for Girls west of the Missouri. Quaint cemetery in rear.

**Loretto Chapel.**—On College Street. One of the most perfect specimens of Gothic Architecture in America. Built from design by French architects.

**Loretto Convent.**—On College Street. Occupied by Sisters of Loretto.

**Roman Catholic Parochial School.**—On Water Street.

**Cathedral.**—On Cathedral Square. Original structure commenced in 1612, destroyed in 1680. Modern structure not complete. When complete to have twin steeples and to be cruciform. Contains a number of paintings by old masters. Reredos behind altar was erected by Governor del Valle and his wife in 1761. Fine old paintings and rich vestments in rear of Cathedral. From here start annually the famous Corpus Christi and the historic De Vargas processions. In rear of altar two Franciscan Friars, murdered by the Indians, are buried.

**Archbishop's Residence.**—On Cathedral Street.

**Bishop's Residence.**—On Cathedral Street. A joining is the beautiful "Bishop's Garden" with historic spring, lakelets and fine orchard.

**Presbyterian Mission School for Girls.**—Grant Avenue.

**The Mary James Mission School for Boys.**—On Federal Street.

**The Santa Fe High School.**—On the Old Fort Marcy Military Reservation, famous in military annals and after abandonment granted to the City of Santa Fe for public school purposes.

**The Garita.** On the hill below and west of Fort Marcy. Ancient Spanish fortress along walls of which malefactors and traitors were executed. Adjoining oldest cemetery in the United States.

**The Capitol.** Dedicated 1900 replacing that destroyed by incendiaries in 1892. All territorial offices and territorial library in building. Fine view of city and mountains from dome. In Capitol park are to be found larger variety of trees than in any other park in New Mexico.

**TEN MINUTES' WALK FROM PLAZA.**

**San Miguel's Church.**—On College Street. Believed to be oldest church building in the United States still used for public worship. Built either in 1598 or 1607. Destroyed in 1692. Rebuilt in 1710. Renovated in recent years. In rear of auditorium stands bell cast in Spain in fourteenth century. Vespers Sunday evenings at 6.



# COME TO BELEN, N. M., Future Railroad Metropolis of New Mexico. Located on Belen Cut-off of Santa Fe R'y.

Belen is 31 miles south of Albuquerque, N. M., at the junction of the Main Line of the Santa Fe System—leading East and West from Chicago, Kansas City, Galveston and points East to San Francisco, Los Angeles, El Paso and Old Mexico.

1,000 business and residence lots, also 25x145 feet, laid out with broad 80- and 70-foot streets, with alleys 20 feet wide, with beautiful lake and public park and grand old shade trees; public school house, costing \$16,000; churches; large mercantile establishments; the Belen Patent Roller Mill, capacity 150 barrels daily; large winery; three hotels, Commercial Club; a population of 1,500 people; several restaurants, etc. Belen is the largest shipping point for wood, flour, wheat, wine, beans and hay in Central New Mexico. Its importance as a great commercial railroad city in the near future cannot be estimated.

## The Belen Town and Improvement Company are owners of the BELEN TOWNSITE

JOHN BECKER, President.  
WM. M. BERGER, Secretary.

ALL FAST LIMITED EXPRESS, MAIL AND FREIGHT TRAINS OF THE SANTA FE WILL GO OVER THE MAIN LINE THROUGH TO BELEN, EAST AND WEST, NORTH AND SOUTH.

The lots offered are in the center of the city, well graded (many of them improved by cultivation); no sand or gravel. We need a first-class bakery, tailor shop, shoe house, jeweler, plumbing shop, planing mill, coal and wood yard, drug store, harness shop, etc. etc.; also a first-class modern hotel.

Our prices of lots are low and terms on easy payments; title perfect; warranty deeds. One-third purchase money, cash. Two-thirds may remain on note, with mortgage as security, for one year, with 8 per cent interest thereon.

Apply at once for map and prices if you wish to secure the choicest lots.

## The Belen Town and Improvement Company

### OPEN TANK METHOD OF TREATING TIMBER

Method for Preserving Wood Has Been Greatly Reduced in Cost By Recent Innovation.

Under the heading of Press Review No. 12, the United States Department of Agriculture gives an interesting description of what it terms "The Open-Tank Method for the Treatment of Timber." The bulletin reads:

A marked saving in three directions—cost of equipment, of materials and labor, and of transportation—is being effected by the introduction of what is known as the "open-tank" method of treating timber. The general practice of preserving timber has hitherto been retarded by the heavy cost of closed retorts and other complicated equipment ordinarily used and the need of experienced men to operate them. Not until the kinds of timber long used and considered almost indispensable for certain purposes grew scarce and rose alarmingly in price did wood users consider seriously the possibility of consuming less wood by making it last longer.

As a rule preserving plants have been located at lumber centers, where a large business might be expected, and it has often been necessary to pay transportation charges to and from the treating plant on timber needed for local uses, such as for ties, posts, and poles. The equipment of the open-tank method, which consists of an open tank, capable of withstanding heat and either equipped with steam coils or so arranged that fire can be placed underneath, is so simple and comparatively so cheap that it is within reach of the smaller companies, contractors, and farmers. The fact that it is portable gives it a distinctive value, since it can be taken, if necessary, into the heart of the forest, and even into the mountains.

One of the chief advantages of the open-tank process is that it can be effectively applied to parts of timbers which are especially subject to rapid decay, such as the butts of fence posts and telephone poles, without wasting preservatives on other parts. It is also especially adapted to the treatment of mine props, small dimension timbers, cross-ties, piling, and shingles, and timbers in small sizes of loblolly pine, black and tupelo gum, western yellow pine, and lodgepole pine, and similar kinds of wood. Fairly good results have been obtained in the treatment of aborvitae, chestnut, and red oak, but the experiments thus far do not warrant the application of the method to the treatment of piling and ties made of these woods.

The open-tank treatment is being rapidly developed, and while it ordinarily does not secure so deep a penetration of the chemicals as the retorts it is sufficiently thorough to protect timber for practical purposes in many situations, and it is probable that future experiments will further extend its application.

Circular 101, just issued by the Forest Service, United States Department of Agriculture, describes and illustrates the open-tank equipment. It can be had upon application to the Forester, United States Department of Agriculture.

Kennedy's Laxative Cough Syrup acts gently upon the bowels and clears the whole system of coughs and colds. It promptly relieves inflammation of the throat and allays irritation. Sold by the Ireland Pharmacy.

The New Mexican Printing Company has the largest facilities and most modern machinery for doing all kinds of Printing and Binding in first-class style. Manufacturers of Loose-leaf Ledgers, Pamphlets and Book work a specialty. Best Book Bindery in the Southwest.

### DRIVER FALLS FROM WAGON AND IS RUN OVER.

Las Vegas, N. M., Aug. 1.—Eduardo Martinez, Jr., employed at a sheep dipping camp near Anton Chico, had a narrow escape from death in an accident a few days ago which will confine him to his bed for some weeks. Martinez had gone for a load of wood and in going down a hill he fell from the wagon. One of the wheels passed over his face, cutting his eye, nose and mouth and badly lacerating his head. The rear wheel of the wagon passed over his shoulder dislocating his right arm. His injuries were dressed by Dr. J. C. Martin and while his injuries are serious, Martinez is expected to recover.

DeWitt's Kidney and Bladder Pills are best for backache and weak kidneys. Sold by The Ireland Pharmacy.

### ARIZONA COUNTY PAYS \$362 BOUNTY ON RABBITS.

Phoenix, Ariz., Aug. 1.—The county of Maricopa is doing some business in the jackrabbit line, and Chairman Orme of the board of supervisors, is beginning to fear that the county will go into the hands of a receiver if this bounty business is not ended. During the month \$362 has been paid out as bounties on rabbit ears.

Kodol for Indigestion and Dyspepsia is a preparation of vegetable acids and contains the same juices found in a healthy stomach. It digests what you eat. Sold by The Ireland Pharmacy.

The New Mexican Printing Company is prepared to do the best of brief work in short order and at very reasonable rates. Lawyers, who desire to have their briefs printed rapidly and correctly and to present them to the Supreme Court on time should call on the New Mexican Printing Company.

### Life Insurance.

For twenty-five cents you can now insure yourself and family against any bad results from an attack of colic or diarrhoea during the summer months. That is the price of a bottle of Chamberlain's Colic, Cholera and Diarrhoea Remedy, a medicine that has never been known to fail. Buy it now, it may save life, for sale by all druggists.

### Chamberlain's Colic, Cholera, and Diarrhoea Remedy, Better Than Three Doctors.

Three years ago we had three doctors with our little boy and everything that they could do seemed in vain. At last when all hope seemed to be gone we began using Chamberlain's Colic, Cholera and Diarrhoea Remedy and in a few hours he began to improve. Today he is as healthy a child as parents could wish for.—Mrs. B. J. Johnston, Linton, Miss. For sale by all druggists. For sale at all druggists.

### For an Impaired Appetite.

To improve the appetite and strengthen the digestion try a few doses of Chamberlain's Stomach and Liver Tablets. Mr. J. H. Seltzer of Detroit, Mich., says: "They restored my appetite when impaired, relieved me of a bloated feeling and caused a pleasant and satisfactory movement of the bowels." Price, 25 cents. Sample free.

### SHORT ORDER MEALS.

The best short order meals are now being served at the Bon Ton Restaurant. The best cooks, and waiters are employed at this place.

The New Mexican Printing Company is prepared to fill promptly and satisfactorily all orders for engraved visiting cards, marriage announcements, invitations and all work of that kind. Prices as low as compatible with good work. Call at the New Mexican office and examine samples and prices.

### SIGHTS OF SANTA FE.

(Continued From Page Six)

o'clock, attended by Christian Brothers and pupils of adjoining Saint Michael's College. At other times, admission 25 cents. Adjoining is the oldest cemetery in the Southwest.

Saint Michael's College.—On College Street. Oldest school for higher education of boys west of Missouri. Campus includes athletic grounds. Conducted by Christian Brothers.

Old House.—On De Vargas Street opposite San Miguel Church. Tradition has it that it was built by Pueblo Indians long before Spanish occupation and was occupied by Onate in 1598. It has been continuously occupied since but upper story was removed in recent years while interior has been frequently renovated. Without doubt the oldest continuously occupied house in the United States.

Guadalupe Church.—On Guadalupe Street. Over a century old. The altar paintings and those in the sacristy are of especial interest.

### WITHIN THIRTY MINUTES' WALK OF PLAZA.

Fort Marcy.—Ruins of old fort erected on hill overlooking Santa Fe from north. Elevation 229 feet above Plaza. Commands fine view of city and surroundings much admired by President Roosevelt upon his visit to Santa Fe several years ago. Good wagon road to the top.

Perez Monument on Agua Fria Road.—Marks spot where Governor Perez was assassinated August 9, 1837, by Santo Domingo Indians.

Rosario Chapel and Cemetery.—Chapel was built in commemoration of retaking of city from the Pueblos in 1692 by De Vargas. This is the terminal of the De Vargas procession held each year in June.

National Cemetery.—Beautifully located commanding a fine view of city. Burial place of veterans of the Mexican, Civil and Indian Wars. The only National Cemetery in New Mexico and Arizona. Upon gravestones may be read the names of many warriors famous in Southwestern history.

Saint Catherine's Indian School.—Opposite National Cemetery. Conducted by Sisters of the Holy Sacrament. Indians from many tribes in attendance.

United States Indian Industrial Training School.—South of the city. One of the large Federal Indian Schools of the United States with almost 400 pupils, representing a score of tribes.

The Territorial Penitentiary.—South of the city. Well worth half a day's visit.

The Territorial School for the Deaf and Dumb.—This is the third of a trio of important public institutions, situated just south of the city boundary, but within the boundaries of the Santa Fe Grant.

Sunmount Tent City.—At the foot of Talaya Mountain, southeast of the city and overlooking it. A Sanitarium successfully conducted for the cure of consumptives.

Nagel's Pinocroft Ranch.—Adjoins Sunmount Tent City and is charmingly situated amidst pinon and cedar. Santa Fe Race Track and Baseball Park.—Laid out in 1907 southwest of the city, not far from Indian School.

### SANTA FE CHURCHES.

Besides the Roman Catholic churches mentioned, there are Protestant churches as follows: Church of the Holy Faith, with rectory on Palace Avenue, Protestant Episcopal; First Presbyterian, with parsonage, on Grant Avenue; First Methodist, on Don Gaspar Avenue; Spanish Presbyterian with parsonage, on Cathedral Street; Spanish Methodist with parsonage, on San Francisco Street; Congregational, abandoned, with Whitin Hall, near Union Depot.

WITHIN FIVE MILES OF SANTA FE  
Aztec Springs.—Four miles from Plaza, one mile north of large reservoir. Mineral springs and ruins of

## WANTS

FOR RENT—Nice furnished room. Inquire 205 Palace Avenue.

FOR RENT—Modern six-room brick house. Good location. O. C. Watson & Co.

WANTED—Man for general work, must understand cows. Apply at Sunmount or at Dr. Mera's office between 3 and 4 p. m.

WANTED—One hundred laborers to sort ore; \$1.75 per day; steady work. Santa Fe Gold and Copper Mining Company, San Pedro, N. M.

LOST—A man's brown leather purse containing a baggage permit drawn in favor of J. G. Guy. Finder return same to Claire Hotel and receive liberal reward.

old hotel, fashionable in the days of Santa Fe's military glory.

Reservoirs of Santa Fe Water and Light Company, the large reservoir being at mouth of Santa Fe Canon and forms a considerable lake. Three miles from Plaza.

Bishop's Ranch.—In sheltered spot north of Santa Fe with private chapel of the late Bishop Lamy. Romantic surroundings. Good wagon road going by coal workings and lime quarries.

Small Box Canon on Bishop's Creek.—In the heart of the mountains amidst the tall pines and spruce. Good wagon road to bottom of canon in which are located silver-zinc-copper mines. Coal mines and lime quarries are passed on the road.

Arroyo Hondo.—South of Santa Fe. Largest tributary of the Rio Santa Fe. Has beautiful canon and on its banks are situated several mounds, the remains of prehistoric Pueblo villages upon which are scattered fragments of ancient pottery and where excavations have brought forth many interesting relics.

Tesque Valley.—Dotted with lovely orchards, prosperous homes and ruins of a prehistoric village. North of Santa Fe and reached by a fine highway that offers superb views of the mountains.

The Scenic Highway.—A Territorial road that crosses the Sangre de Cristo Range in its most rugged parts and at present terminates within three miles of the Pecos River. It begins in the Santa Fe Canon, three miles from the Plaza, and winds over the Pecos Forest Reserve and in thirteen switchbacks mounts the Dalton Divide at an elevation of 10,000 feet passing down the Macho Canon through dense pine forest and at every turn revealing magnificent vistas of mountains, forest and streams. One of the wonders of the Southwest. It is twenty-two miles long as far as constructed.

Agua Fria.—An ancient Mexican village, south of Santa Fe. On the opposite side of the river from the village is a huge mound and the remains of a very large prehistoric village, the surface being covered with fragments of ancient pottery.

WITHIN TEN MILES OF SANTA FE.  
Monument Rock.—In Santa Fe Canon and on the Pecos Forest Reserve. Reached by the Scenic Highway. At its foot is the Montezuma gold mine, now abandoned. Just beyond it, the Scenic Highway winds in thirteen switchbacks over the Dalton Divide and the Santa Fe River emerges from a picturesque but almost impassable canon. Nine miles from Plaza.

### Eczema.

For the good of those suffering with eczema or other such trouble, I wish to say, my wife had something of that kind and after using the doctor's remedies for some time concluded to try Chamberlain's Salve, and it proved to be better than anything she had tried. For sale by all druggists.

### Roswell Automobile Co.

Mail and Passenger Line between Island train due at 2 a. m. Roswell, N. M., and Torrance, N. M., Running time between the two daily Sunday included, connection points 5 hours, meals furnished at all trains on the Rock Island Camp Needmore, free of charge and Santa Fe Central Railways. Excursion parties accommodated by Leave Roswell at 1 p. m. notifying the company two days in Advance Torrance on arrival of Rock advance.

Agents for the Buick Automobiles, one of the best known and Best Machines for all purposes on the market. Two of the best known and best machines for all purposes on the market. Address all communications and inquiries to the

### Roswell Automobile Co.

Roswell, . . . . . New Mexico.

## Wells Fargo & Company

Express  
General Express Forwarders

## All Parts of the World.

Save Money and Inconvenience by Purchasing Wells Fargo DOMESTIC MONEY ORDERS, TRAVELERS' MONEY ORDERS, FOREIGN MONEY ORDERS. Payable Throughout the United States, Canada, Mexico and all Foreign Countries

REMITTANCES SENT BY TELEGRAPH.

J. D. BARNES, Agent

## Rubber Stamps

WHEN YOU FIND YOURSELF WRITING THE SAME THING FREQUENTLY IN THE COURSE OF YOUR BUSINESS, REMEMBER A RUBBER STAMP WILL SAVE YOU A GREAT DEAL OF TIME. BUSY PEOPLE ARE USING RUBBER STAMPS MORE NOW THAN EVER BEFORE BECAUSE THEY SAVE TIME, AND TIME IS MONEY THESE DAYS

### PRICE-LIST

One-line Stamp, not over 2½ inches long.....15c  
Each additional line on same stamp, 10c.  
One-line Stamp, over 2½ and not over 3½ inches long..20c  
Each additional line on same stamp, 15c.  
One-line Stamp, over 3½ and not over 5 inches long...25c  
Each additional line on same stamp, 20c.  
One-line Stamp, over 5 inches long, per inch.....35c  
Each additional line, same price.

(Curved lines on Stamp count as two lines.)  
Borders of all shapes, under 3 inches long way, 25c extra.  
Larger sizes at proportionate prices.

Where type used is over one-half inch in size, we charge for one line for each one-half inch or fraction.

### DATES, ETC.

Local Dater—any town and date for ten years.....\$1.00  
Ledger Dater—month, day and year in ½-inch......50  
Regular line Dater......35  
Defiance Model Band Dater.....1.50  
Fac-Simile Signatures, Rubber Stamp and Wood Cut. 1.50  
Pearl Check Protector.....1.00

### SELF-INKING STAMP PADS.

1½x2½, 10c; 2x3½, 15c; 2½x3½, 25c; 2½x4½, 35c; 3½x6½, 50c; 4½x7½, 75c.

FOR TYPE SPECIMENS ADDRESS

## NEW MEXICAN PRINTING CO.

SANTA FE, NEW MEXICO



# SOAPS

Come and See the Big New Stock of BATH and TOILET SOAPS

## EXAMINE PRICES

You Will Then Know Why So Many People Buy Their Soaps of Us

# THE IRELAND PHARMACY

GROCERS, BAKERS, BUTCHERS!

**CARTWRIGHT-DAVIS CO.**

No. 250 San Francisco Street.

Grocery Telephone No. 4. Meat Market Telephone No. 40.

### MEAT MARKET.

It costs us more to get meat from Denver by express this hot weather, but the quality is so much better that we feel repaid for the extra outlay. Try some of our Denver killed beef, lamb, etc.

### CALIFORNIA FRUITS.

We are receiving regular shipments of fresh California fruits. We show practically all the varieties in market.

### FRESH VEGETABLES.

We are getting in fresh vegetables daily. The beets, lettuce, cucumbers and tomatoes we are now receiving are especially nice. Telephone peas are sweet and tender. Try them.

### PICKLES

We have a pretty big variety of pickles in both bulk and glass. Almost anything you want. The Monsoon line at 25c for a pint bottle, is one of our leaders. We have it in all kinds. Bulk Chow Chow 15c pint.

### NEW ALFALFA.

New alfalfa is hard to get, but we have it. The quality is good.

### BAKERY GOODS.

Don't bake yourself as well as the bread and cakes this hot weather. We can furnish you almost anything you

want in this line as cheap and possibly as good as it can be made at home.

### CHILE SAUCE.

Bayle's Chile Sauce.....15c  
Kuner's Chile Sauce.....10c  
This is fine for cold meats.

### TABASCO CATSUP.

Tabasco Catsup is made by Bayle, St. Louis, and it is a hot one. Per bottle.....15c

### ORANGE MARMALADE.

Miller's orange marmalade is packed in opal jars. It is made in Belfast, Ireland, and sold by us at 30c per jar. Just the thing for breakfast or lunch. It is a good food, and a spur to the jaded appetite.

### FERNDELL PRESERVES.

FerndeLL preserves are absolutely pure. Contain nothing but fruit and sugar. All kinds, jar.....40c

### SUMMER DRINKS.

A big line of drinks, fruit ciders, fruit wines—no alcohol—soda water, etc. Quarts 15 cents. Welch's grape juice 30 cents.

### MALT NUTRINE.

Malt Nutrine is a specific for that tired feeling. Bottle 25 cents. Dozen, \$2.50.

## COAL AND WOOD

Genuine Cerrillos lump, ton, \$6.00  
Monero lump.....\$5.75  
Raton lump.....\$5.50  
Anthracite mixed, per ton, \$5.75  
Anthracite furnace, ton, \$8.75  
Sawed wood, per 1,000 lbs., \$3.00  
Four-foot wood, per cord, \$3.50

**CAPITAL COAL YARD.**

OFFICE: Garfield Ave., Near A. T. & S. F. Depot. Phone No. 85.

## DUDROW & MONTENIE

**FUNERAL DIRECTORS  
AND  
EMBALMERS**

All Kinds of Picture Framing

DUDROW'S OFFICE BUILDING. Day Phone 35

Residence: Upper Palace Avenue (Amado Chaves House). Nights and Sundays. Telephone, No. 142.

### IT DOESN'T COST ANYTHING

TO COME IN AND LOOK AROUND. VISITORS ARE ALWAYS WELCOME WHETHER THEY BUY OR NOT.

**The Biggest Curio Store in the West**

MEXICAN AND INDIAN WARES OF ALL DESCRIPTIONS AT BARGAIN COUNTER PRICES. ELEGANT STOCK OF NAVAJO BLANKETS AND BASKETS JUST RECEIVED. FINEST LINE OF MEXICAN DRAWN WORK IN CITY.

THIS IS THE HOUSE FROM WHICH THE GENUINE INDIAN AND MEXICAN CURIOS COME.

You Can't Miss the Place

**J. S. CANDELARIO,**

THE CURIO MAN.

301-303 San Francisco Street. Look for the Old Mexican Cart.

### Personal Mention.

(Continued from Page Four)

C. Sganzi, of Richmond, California, was a visitor to the city today. He is interested in a mining project.

### Minor City Topics.

(Continued from Page Five.)

Policemen Bernardo Baca and Ruperto Martinez while making their rounds last night discovered the front door of the store of Julius Gerdes unlocked and reported the circumstance to Mr. Gerdes. Investigation revealed the fact that the stock had not been disturbed.

Owing to a washout north of Alamosa this afternoon's train on the Denver and Rio Grande is reported seven hours late. Santa Fe train No. 1 is reported on time. There was no report on this evening's train on the Santa Fe Central owing to the wires being down.

### THE HOTTEST AND WETTEST MONTH

Yet August Weather in Santa Fe is Delightful; Never Oppressive; Always Cool at Night.

The following data covering a period of 32 years of official weather observations during the month of August at Santa Fe, give the meteorological averages for the month, which however, must not be construed as a weather forecast. Mean temperature for August 68 degrees; the warmest August was that of 1879 with an average temperature of 72 degrees; the coolest August was that of 1894 with an average temperature of 64 degrees; the highest temperature on record in August or at any time at Santa Fe, 97 degrees, on August 9, 1878; the lowest August temperature 40 degrees on August 31, 1882; the earliest date on which killing frost occurred, September 25, 1889; average date for first killing frost, October 19; average precipitation for month 2.36 inches; average number of days with more than .01 of an inch of precipitation, 9; the greatest monthly precipitation was 6.28 inches in 1881; the least was .36 of an inch in 1889; the greatest precipitation during any 24 consecutive hours was 2.02 inches on August 19, 1893; the average relative humidity 47 per cent; at 6 a. m., 59 per cent; at 6 p. m., 35 per cent; average number of clear days 11; partly cloudy days 16; cloudy days 4; the prevailing winds have been from the southeast; the average hourly velocity 5.9 miles; the maximum velocity 41 miles from the east, recorded on August 12, 1875.

### RETURN FROM FISHING TRIP

Santa Fe Party Spent Two Weeks at Headwaters of Pecos—Speckled Beauties Were Numerous.

A party of Santa Feans consisting of John G. Howland, Adolph Hill, Manuel Delgado and Constant Chapman, returned last evening after a two weeks' outing on Barbara Creek at the headwaters of the Pecos River. They had fine luck as the speckled beauties were very numerous. They brought a few trout back with them which were distributed among their friends. It rained every day in the mountains but this did not mar the pleasure of their outing to any great extent.

### MUCH ACTIVITY ABOUT SPRINGER

Several Large Land Deals Consummated Recently—Country Settling Up Rapidly.

(Special Correspondence to the New Mexican.)

Springer, N. M., Aug. 1.—The Miami Land and Irrigation Company composed of Ohio men, has recently bought 20,000 acres of land lying immediately west of this town and will sell it in small farms. The company will impound the waters from the Ryado River and will give a water right with each farm sold.

A colony of Dunkards have just purchased 50,000 acres of land east and northeast of Springer. This will insure an immediate settlement of this fine section of country with a most thrifty class of farmers, and a most desirable community of people. Springer is anticipating new business prosperity on the advent of the many new settlers soon to come to the country.

B. C. Montgomery, a noted evangelistic singer of the Presbyterian Church and until lately employed by the General Assembly's Evangelistic Committee, has been obliged on account of his health to remove to the Southwest. He will be connected as a colonization agent with the large land companies doing business in this neighborhood and will make regular trips east and north to interest colonists in this portion of the country. On account of his extensive acquaintance all over the United States he will be a valuable advertising medium.

The Methodist Church here has taken steps to rebuild and will locate their new building nearer the center of town. They already have a purchaser for their eight room parsonage and will build a minister's house in connection with the new church. Rev. Frank Finley is the pastor.

Walter McCloud of Maxwell City, is offering for sale his splendid ranch of 11,000 acres just east of this place. Mr. McCloud is one of the first settlers in this part of the country and has one of the most valuable pieces of land in northern New Mexico.

The old county court house, built in the time when Springer was the county seat at a cost of twenty thousand dollars and which has been abandoned since the removal of the county seat to Raton, is fast falling into decay and the building will soon be a total loss to the county.

### WOOL MARKET AT STANDSTILL

However, Undertone is Strong and Future Outlook is Encouraging.

Boston, Mass., Aug. 1.—While the wool market is practically at a standstill a considerable volume of business has been accomplished. The new fleece wools, especially the delaines and half bloods have, on the whole, met with a more satisfactory sale thus far than other kinds. Several houses, in fact, are reported as sold ahead on half bloods and delaines, and are not offering any more until they can get their wools here from the west and open them up. Territory wools would probably be more active if the new wools were here in larger quantities.

Subscribe for the Daily New Mexican and get the news.

### TUCUMCARI IS GROWING RAPIDLY

Extensive Improvements Being Made By El Paso and Southwestern—New Settlers Still Coming.

D. J. Aber, surveyor and civil engineer of Tucumcari, is in town on professional business, and is examining the records of the U. S. surveyor general's office.

Mr. Aber states that Tucumcari is growing steadily, and in the right direction. The El Paso and Southwestern Railway Company is making a great many improvements; among them being the erection of a round house containing twelve stalls for engines, machine shops and turn table. The company has a large force of employees and its pay roll now amounts to about \$15,000 per month, which Mr. Aber believes will be largely increased shortly.

There are several new business houses in course of construction and a number of residences, probably twenty or more. The business houses are being built of red sandstone, which is found in abundance in the vicinity of Tucumcari, makes a fine appearance and is durable building material. Two buildings of cement blocks are also being constructed.

The town now is estimated to have 2,500 people and its business is constantly increasing. Mr. Aber believes it is of a permanent character. As a surveyor he is well acquainted with land in Quay County, and it is his opinion that nearly every available quarter section has been homesteaded and that there is but little public land left in the county for future entry. There is something doing by settlers, a number of whom are relinquishing their land for valuable considerations, and the lands so relinquished are being rapidly settled by the purchasers.

Crops in Quay County this year, according to Mr. Aber, will be fair; in some sections they will be good. There is more or less change going on, people selling out and going away and new comers taking their places. As to the permanency of the settlers, much will depend on the rainfall this and next year. Water for domestic purposes can be had in abundance by the agency of wells from fifty to two hundred feet deep and the water is of good quality. For irrigation not much is available, although a good many wind mills are being put in.

The quarter sections so far taken up are pretty well fenced, and the county is beginning to have a settled appearance with houses, and cultivated fields right along on each side of the public roads. The people are of a good class and are very hospitable. The Choctaw and Gulf Railroad people are constructing part of their line from Amarillo, west towards Tucumcari. According to its charter the road must complete a certain mileage each year in order to hold its franchise, and under this arrangement it is believed that the road will reach Tucumcari in 1909, at the furthest, thus giving to Tucumcari another eastern outlet.

### FRENCH CRUISER

TO MOROCCO PORT.

Paris, Aug. 1.—The cruiser Forbin now at Azores has been ordered to go immediately to Casa Blanca, Morocco, where a massacre of foreigners occurred yesterday. Two cruisers at Toulon have also been ordered to prepare to leave for the same destination.

Try a New Mexican want ad.

### VAUDEVILLE WILL BE DECIDED HIT

Curtain Will Rise on Burlesque Operetta "Cinderella"—Clever Specialties Afterwards.

Are you going to the show tonight. If not you want to be sure and attend tomorrow evening. If you do not see it you will miss the best theatrical event of the local season even if it is by amateur talent. Owing to the fact that the entire performance will consume about two hours and possibly more, the curtain will rise promptly at 8 o'clock it is announced.

Everything passed off smoothly at the dress rehearsal last night and those who were privileged to be present say the show will be well worth the price of admission. Mrs. R. L. Baca and Mrs. Arthur Seligman who have charge of the entertainment put on the finishing touches today of the stage decoration.

The performances are given for the benefit of the Woman's Board of Trade which is erecting the new public library building at a cost of about \$8,000. Funds are needed just now to meet the payment of a note.

### WESTERN UNION WIRES DOWN

Owing to Break in Line to Denver New Mexican Associated Press Report is Short Today.

Owing to a break in the Western Union line to Denver which occurred shortly after noon today, the Associated Press report of the New Mexican is very short today. However it is expected the break will be repaired sometime this evening. It is not known what caused the trouble.

### OPERATION RESTORES MAN TO CONSCIOUSNESS

Albuquerque, N. M., Aug. 1.—After having been unconscious for eleven days as the result of a broken jaw received by being kicked by a horse, J. S. Tucker was brought to St. Joseph's hospital in this city from the lumber camp of the Dominga Lumber Company near Bland. Upon arriving at the hospital Tucker was immediately operated upon and the splintered pieces of bone removed from his face and the jaw set. He rallied from the operation and regained consciousness. His ultimate recovery is now looked for. The case is one of the most peculiar in the history of the local hospital.

### ALBUQUERQUE FAILS TO LAND SMELTER.

Albuquerque, N. M., Aug. 1.—This city lost in its fight to secure the location here of the big smelter of the Tri-Bullion Mining Company, an independent corporation planned to fight the smelter trust. The Commercial Club sent P. F. McCanna, secretary of the club, to New York to confer with the officers and stockholders of the company regarding the location of the smelter here, but he arrived too late to accomplish anything.

### MAJOR PALEN NAMED JURY COMMISSIONER.

Major Rufus J. Palen, president of the First National Bank in this city, was appointed as a jury commissioner to act with E. P. Holcombe, temporary clerk of the First Judicial District, in the drawing of the jury venire Saturday, August 10, for the fall term of the United States court.

### PICNIC PARTIES.

Should not forget to take a dozen or so of Lemp's Falstaff Beer—pints or quarts. Tin ice packers furnished at Telephone 94. THE CLUB.

### SODA WATER!

Any Flavor You Desire. We will deliver Soda Water in any quantity to any part of the city. CITY BOTTLING WORKS, Telephone No. 38.

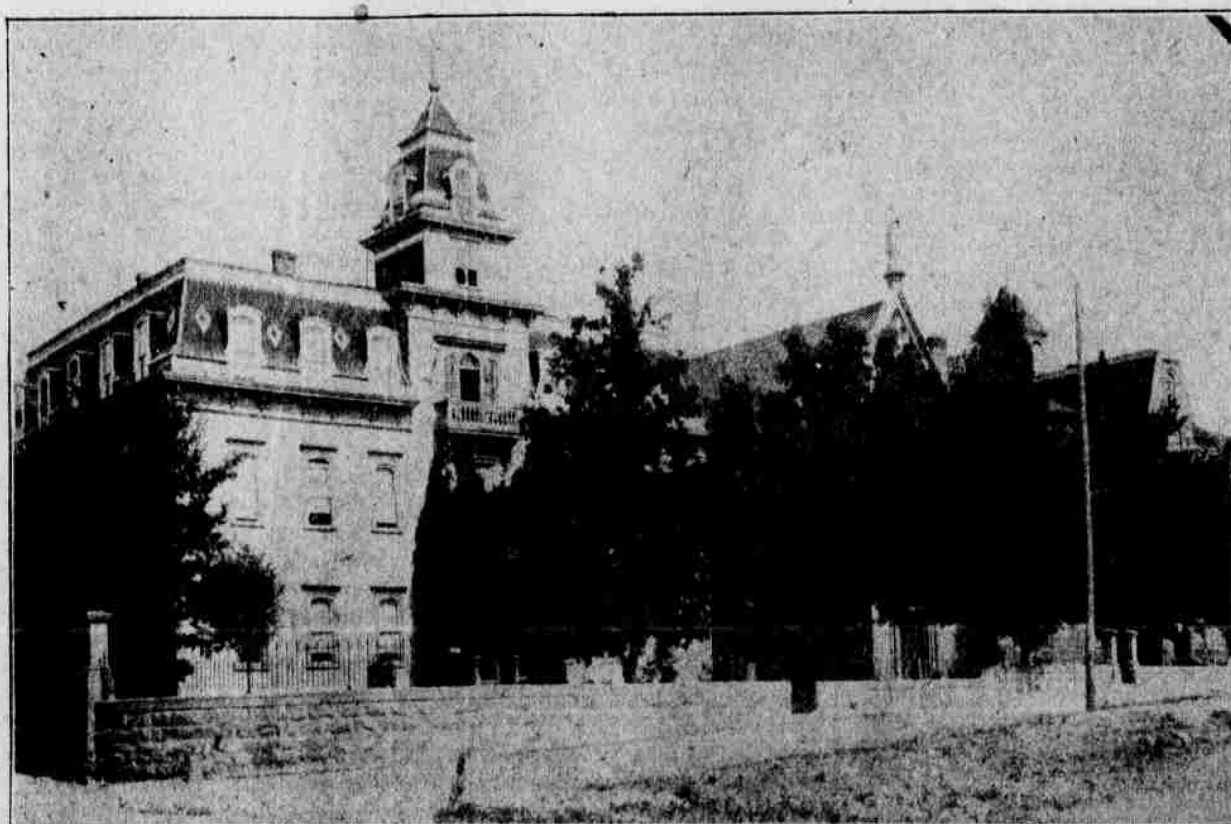
### DR. DIAZ' SANITARIUM.

Cor. Water St. and Gaspar Ave. SANTA FE - NEW MEXICO.

MODERN APPLIANCES FOR TREATMENT OF SURGICAL CASES. HOME COMFORTS. SKILLED PROFESSIONAL TREATMENT. TRAINED NURSES.

No Tubercular Patients admitted.

APPLY FOR TERMS.



LORETTO ACADEMY Santa Fe, N. M.

OPENS, SEPTEMBER 3, 1907.