

12-1-1906

## Santa Fe New Mexican, 12-01-1906

New Mexican Printing Company

Follow this and additional works at: [https://digitalrepository.unm.edu/sfnm\\_news](https://digitalrepository.unm.edu/sfnm_news)

---

### Recommended Citation

New Mexican Printing Company. "Santa Fe New Mexican, 12-01-1906." (1906). [https://digitalrepository.unm.edu/sfnm\\_news/6486](https://digitalrepository.unm.edu/sfnm_news/6486)

This Newspaper is brought to you for free and open access by the New Mexico Historical Newspapers at UNM Digital Repository. It has been accepted for inclusion in Santa Fe New Mexican, 1883-1913 by an authorized administrator of UNM Digital Repository. For more information, please contact [disc@unm.edu](mailto:disc@unm.edu).



**TOBACCO HOUSES  
BURNED BY MOB****Kentucky Planters  
Make Desperate  
Fight.****300 MASKED MEN ARMED****Entered Princeton at Night  
Applied Torch Guarded  
Ruins From Citizens.**

Louisville, Dec. 1.—A special force Princeton, Kentucky, says the Tobacco Stemmeries of John Steger and John G. Orr, the latter controlled by the Imperial Tobacco Company, of New York, were destroyed by a fire, kindled by a mob of masked men. The loss is estimated at \$175,000. The mob which numbered 300 men entered Princeton between one and two o'clock, seized the night town marshal and disarmed him. The men then went to the factories and quickly applied the torch.

**Prevented Citizens From Extinguishing Fires.**

The masked men stood guard, permitting nobody to come near until the buildings were completely enveloped in flames and help was useless.

**Used Dynamite on Former Occupation.**

Only a few weeks ago, the secret organization of planters and tobacco dealers, dynamited several warehouses of the trust companies. Planters who had sold tobacco to the trust were notified that if they continued to do so, they would pay for the offense with their lives. Little or no assistance is being given the trusts by local peace officers who are secretly in league with the planters.

**Mob Also Took Charge of Waterworks Plant.**

The Steger factory is controlled by the American Snuff Company and Steger is the Princeton agent for the concern. There were about 150,000 pounds of tobacco in each warehouse and all was burned.

The mob in addition to disarming the policeman, took charge of the police station and the waterworks. Even if the fire company had responded it would have been unable to obtain a supply of water. The work of the mob is believed to be only a furtherance of the agitation by tobacco raisers against the tobacco trust. An organization of farmers is known as the Dark Tobacco Growers' Protective Association, but it is not known that any member of that organization was in last night's mob.

**DECEMBER SUNNY  
AND COLD****As Rule the Weather Behaved Fair-  
Well at Santa Fe During the  
Christmas Month.**

The following data covering a period of 33 years, have been compiled from the Weather Bureau records at Santa Fe for the month of December. They are issued to show the conditions that have prevailed, during the month, in that time, but are not to be construed as a forecast of what the weather is likely to be, for even at Santa Fe, as the past has demonstrated, there is no telling what the weather may be, for November, generally one of the sunniest and pleasantest months of fall was this year the most disagreeable month climatically that this section has experienced for many years. The normal temperature for December has been 31 degrees, the warmest December was that of 1889 with an average temperature of forty degrees, while the coldest was that of 1898 with an average temperature of twenty-four degrees. The highest December temperature recorded was 65 degrees on December 3, 1878, and the coldest fifteen degrees below zero on Christmas day, 1879. The average precipitation for the month has been .71 of an inch and five, the average number of days with precipitation amounting to .01 of an inch or more. The greatest monthly precipitation was 2.21 inches in December, 1885; the least, nothing, in December, 1871. The greatest amount of precipitation recorded in any twenty-four hours was 1.09 inches on December 28, 1895. The greatest amount of snowfall recorded was 5.5 inches on December 18, 1895. The average relative humidity has been 54 per cent at 6 a. m., 61 per cent at 6 p. m., 47 per cent. The average number of clear days has been 18, partly cloudy 9, and cloudy 4. The prevailing winds have been from the northeast and average 6.3 miles an hour, while the highest velocity recorded was forty miles an hour on December 14, 1890.

**M'CURDY FAMILY  
OUT OF MUTUAL**

Last Costly Member of Insurance Grifters Resigns \$10,000 Position "Inspector of Risks."

New York, Dec. 1.—The Mutual Life Insurance Company lost its last connecting link with the McCurdy family yesterday in the resignation of Peter Stuyvesant Pillot, its \$10,000 a year "inspector of risks." Pillot was a cousin of Louis A. Thebaud and a son-in-law of Richard A. McCurdy.

**IMPROVEMENTS  
IN MAIL SERVICE**

Direct Pouch From Las Vegas and Albuquerque—Extra Allowance for Carriers.

Postmaster Walter has succeeded in having a direct pouch exchange established between Las Vegas, Albuquerque and Santa Fe. From today on, Albuquerque will make a direct pouch on Santa Fe via train No. 10, which on days like Thursday, when train No. 2, did not arrive in Santa Fe until 5 p. m., will bring the Albuquerque mail and mail south of Albuquerque to Santa Fe at noon.

Las Vegas will also send a direct pouch to Santa Fe on train No. 3. Formerly, Las Vegas mail reached Santa Fe only in the evening, but in the future, it will also arrive at noon. In return, Santa Fe sends direct pouches to Las Vegas and to Albuquerque.

An additional allowance has been secured to mount another carrier on bicycle, in addition to Carrier Ashley T. Reed. Carrier S. C. McCrimmon will be the second mounted carrier, thus facilitating the delivery of mail, east of Cathedral Street, and Washington Avenue to the city limits. An allowance has been granted in addition to employ an extra carrier during the holidays.

The postoffice force did not have much of a holiday Thursday, in fact, holidays like Christmas are noted in the annals of the average postoffice employee by more work than that on a business day, and Sundays are no exception. The postoffice differs from other federal offices in this city in that its activities commence between 5:30 and 6 a. m., instead of 9 a. m., and continue without the interruption of a dinner hour until 7 p. m., and sometimes far into the night, instead of ceasing between 4 and 5 p. m.

Thursday Santa Fe trains Nos. 7 and 9, due the evening before, did not arrive until 6:30 a. m., and together with belated eastern mail of two days over the Santa Fe Central, which arrived during the night, gave work for distribution until 8:30 a. m. At the same time mail had to be dispatched for Santa Fe train No. 2, which leaves the postoffice at 7:45 a. m. From 8:30 to 9:30 a. m. both registry and general delivery windows were open; from 9:30 to 10:30 a. m., the Denver & Rio Grande mail had to be dispatched. From 12 m. to 1 p. m., when other federal employees were supposed to be eating their Thanksgiving turkeys, the mail for the Santa Fe Central and eastern connections had to be tied out, and shortly after one o'clock, the mail from Santa Fe train No. 8 of the night before, and Nos. 3 and 10, arrived and gave occupation until almost three o'clock to the distributing force. Between 3 and 4 o'clock, mail for Santa Fe train No. 1 had to be dispatched and after that arrived Santa Fe train No. 2 and the Denver & Rio Grande train, which gave work until 6 o'clock. From 6 to 7 p. m., the mail for Santa Fe trains Nos. 9 and 10 had to be gotten ready and it was not before that hour that the postoffice work which began at 5:30 a. m., was concluded for Thanksgiving day, to be resumed before 6 o'clock the following morning. The work entailed in dispatching six and distributing eight mails from three railroads a day by a limited office force when trains are running irregular and when money order, registry and other business must be attended to at the same time, makes the eight hour day seem very short. However, the postoffice regulations require work in the post office only between 8 a. m. and 6 p. m., and at the registry and money order windows only to 5 p. m., nor do they require the distribution of mail on holidays immediately upon its arrival. Only considerations for the business interests of Santa Fe and the local box holders cause the above mentioned long days, even on Sundays. It must also be remembered that the business of the local postoffice has increased over twenty per cent during the past twelve months and must be handled by the same force that handled the lesser business, the department having refused to authorize night service, because all trains but one are scheduled during the afternoon hours, only one, and that very irregular, arriving during the night, nor do the receipts of the office justify the employment of an extra clerk for night service, however, desirable this might be, both for the postoffice and local interests.

**FUEL FAMINE  
IN NEVADA**

Follows Terrible Blizzard—Suffering Intense—Deaths May Soon Result—Not Even Wood.

Reno, Nev., Dec. 1.—Unless the fuel famine in Nevada is broken immediately, suffering and sickness and perhaps death will follow in the wake of the storm which raged for the past two days in southern Nevada. Coal cannot be obtained in Goldfield or Tonopah and wood is bringing exorbitant prices. Ties and telephone poles are being burned, while a train load of wood is being rushed into southern Nevada. The fuel famine extends over the entire state and even to this city. There is no coal and very little wood here.

**HOLIDAY RATES.**

Christmas and New Years. For the above occasion the Santa Fe will sell tickets to points on their line and return for one fare and a third. Tickets will be on sale December 20th to 25th inclusive, also December 30th and 31st and January 1st, 1907; final return limit January 7, 1907. G. H. DONART.

**JAPANESE BARRED  
FROM SCHOOLS****In Spite of Presi-  
dent and Secre-  
tary Root.****WOULD NEED U. S. TROOPS****To Force San Francisco Peo-  
ple to Relent—South-  
erners Join Fray.**

Chicago, Ill., Dec. 1.—A dispatch to the Tribune from Washington says:

"If President Roosevelt and Secretary Root persist in the position they seem inclined to take regarding the right of the federal government to make treaties which will bind states and municipalities in the conduct of their local affairs, half a dozen abhorred hornets nests in the Senate will break loose early in the session. California Senators Visit President."

Senator Flint and Benjamin Ide Wheeler, both of California, called at the White House yesterday to see the President and to advise with him from different points of view, that interference by the federal government or any assumption of a right to interfere with the school system of San Francisco or any other city would provoke a riot. Flint declared the government would make a great mistake because there was a disposition in San Francisco to pass a local ordinance limiting the age at which pupils may enter the schools. Secretary McMillan has come back from the coast intimating that any attempt by the United States Government by treaty or otherwise to regulate the schools of any city on the Pacific Coast would be instantly resented and could be enforced only by the use of troops.

**Southern Senators Arrive to Join Fray.**

To complicate matters, the Southern Senators are arriving in Washington. In a perfect flame of excitement because they have been lead to believe that the Japanese agitation in San Francisco is merely a decoy for an attempt to break down the whole system of separate schools for negroes in the Southern states. So far as the intention of the administration is concerned, the Southern Senators are entirely mistaken, because the President and Secretary Root have nothing more in view than the maintenance of friendly relations with Japan.

**Administration Not Desirous of Tak-  
ing Up Negro Question.**

While the administration must be acquitted of any intention to apply its theories to the negro question, it is none the less true that the two situations are closely connected so that if the Japanese by the power of the United States can be put in the public schools of San Francisco in spite of local laws, the full-blooded negro with a certificate of citizenship from any foreign country, and there are thousands such, could be forced into any white schools in the South.

**London Sees Awful Crisis Before United States.**

London, Dec. 1.—President Roosevelt's solution of the problem arising from the anti-Japanese rule of the San Francisco public schools is awaited with the greatest interest and some anxiety here. London papers are being regaled with sensational statements made by recent arrivals on the Pacific Coast from the far east, suggesting the possibilities of grave complications, and even war. The forthcoming presidential message to Congress therefore is watched for with even greater interest than usual.

**GILLETTE MURDER  
CASE CLOSING**

Fate of Man Accused of Killing Grace Brown Goes to Jury on Monday.

Herkimer, N. Y., Dec. 1.—The testimony that District Attorney Ward wanted to bring together before the closing of the prosecution's case in the Gillette murder trial, were gotten on the records this morning and then the court adjourned until Monday, when the lawyers will make their final arguments and the judge will deliver his charge. The defense applied for permission to investigate one point which it did not name and swear one witness to testify to it Monday, but should this witness be sworn but twenty minutes will be consumed in the completion of the evidence.

**U. S. COURT IN SESSION**

United States court for the First Judicial District reconvened at 9 o'clock this morning. Judge John R. McFie presiding. A. M. Bergere was his post as clerk. The United States was represented by United States Attorney W. H. H. Llewellyn and Assistant United States Attorney E. L. Medler.

The grand jury has not returned any indictments so far. Immediately after court was called to order this afternoon and it was found that the grand jury was not yet ready to report, adjournment was taken until Monday. There will be no petit jury at this special term of court. Assistant United States Attorney E. L. Medler arrived in the city on the noon train today from Albuquerque. New Mexican advertisers got trade.

**ADDITION TO  
JEMEZ RESERVE**

Small Reserve Created in Northeastern Taos County—Maps Received at Governor's Office.

Maps and copies of proclamations setting aside two tracts of land, one large district as an addition to the Jemez Forest Reserve and the other a smaller tract to be known as the Taos Forest Reserve, have been received at the office of Governor Hagerman in the Capitol.

The Jemez addition, lies east of the reserve of that name, being located partly within the counties of Rio Arriba, Sandoval and Santa Fe in townships 15 to 32 north, ranges from 1 to 11 east. The addition, however, winds among a number of land grants so that it is almost impossible to estimate the exact area. It will, however, enlarge the Jemez Reserve by about one-third its present area. It covers portions of the Jemez Mountains and smaller adjoining ranges.

The principal land grants within the borders of the Jemez addition are: Piedra Lumbre, Lobato, Palodera, Baca Location, Canon de San Diego, Ojo del Espiritu Santo and a number of smaller grants.

The Taos Reserve is located in northeastern Taos County and has for its northern boundary the big Sangre de Cristo grant. It covers the Red River district, the town of Questa being just at the edge of its western border. The Taos Reserve lies in townships 25, 26, 27, 28, 29 north, ranges 13, 14, 15, 16 and 17, east.

A number of other reserves will be established in the near future.

**ENGINEERS WIN  
IN NEW YORK**

Secured Good Increase in Wages and Consideration of All Other Demands.

New York, Dec. 1.—The questions at issue between the New York Central and the Hudson River Railroad and its steam and electric locomotive engineers have been adjusted, according to J. M. Watson, chairman of the organization of the Brotherhood of Locomotive Engineers employed by the company. Watson said the men will receive a substantial increase in pay and the satisfactory consideration of all their other claims.

**PULAJANE CAMP  
IN SAMAR RAIDED**

By Philippine Constabulary—Chief Pablo Escapes But Family Captured—Eleven Killed.

Manila, Dec. 1.—A force of constabulary under command of Major Murphy surprised the camp of Pablo, chief of the Pulajanes, on the island of Samar, at daylight yesterday. Eleven natives were killed and the chief's son and nine others wounded. Chief Pablo himself escaped, but his wife and daughter were captured. The capture of Pablo is considered only a question of a few days. There is now only one other chief at large and plans will be arranged to capture or kill him. Governor Curry of Samar wires that the breaking up of Pablo's band signals the death knell of Pulajanism in the island.

**FOUR DEAD  
MANY INJURED**

In Wreck on Rutland Railroad, Vermont—Cars Destroyed By Fire.

Vergennes, Vt., Dec. 1.—Four persons are known to be dead and it is feared others lost their lives while several are seriously injured in a wreck on the Rutland Railroad near here today. A gravel train ploughed into the rear end of a passenger train. Two passenger cars were wrecked and then caught fire. None of the dead have been positively identified.

**SNOW AND RAIN GENERAL  
ACCORDING TO REPORTS.**

The following reports of weather conditions were received by the New Mexican this afternoon:

Trinidad—Snow falling steadily but melting as it falls.

Alamosa—Five inches of snow fell during the night but it is now melting rapidly. Sky is overcast with clouds.

Denver—The weather is clear and cold.

Raton—Two inches of snow fell last night and it is raining today.

Las Vegas—Snow fell from 11 o'clock last night until 10 o'clock this morning, followed by a steady rain.

Espanola—Rain is falling steadily here.

**FIRST PASSENGER TRAIN OF  
ROCKY MOUNTAIN LINE**

The first passenger train over the Rocky Mountain, St. Louis & Pacific Railroad left Raton a few days ago for Ute Park. President Henry Koehler, Jr., General Manager J. Van Houten and other officials of the company were on board and made an inspection trip of the line. They returned the same day well pleased with the progress made on the line.

**PEARY CALLED ON PRESIDENT  
AND WAS CORDIALLY GREETED**

Washington, D. C., Dec. 1.—Commander Robert E. Peary, the Arctic explorer, called on the President by appointment today. He was heartily congratulated by Mr. Roosevelt. Walter Wellman, who hopes to reach the Arctic regions in an airship was at the executive offices when Peary arrived. The two exchanged cordial greetings.

**JUNTA MEMBERS  
ARE INDICTED****For Criminal Libel  
By Saint Louis  
Grand Jury.****REGENERACION SUPPRESSED****Four Men Arrested—Colonel  
Greene a Witness—Case  
an Unusual One.**

St. Louis, Mo., Dec. 1.—Indictments were returned by a grand jury against Ricardo Flores Magdon, Enrique Flores Magdon, Juan Sarabia and Antonio Villareal, the four Mexicans charged with criminal libel. They were publishers of the "Regeneracion," a publication which was issued here and which was ordered suppressed. The witnesses against the four Mexicans indicted, are stated to be W. C. Greene of Copper Mine fame, Herford, Mexico, and Senator S. M. Chase of New York City.

**Villareal Held By Police in Pass City.**

Villareal is at present in custody at El Paso, Texas, fighting extradition on a charge of alleged murder, which he claims is a ruse to get him across the border. Sarabia is under arrest in the city of Mexico. Aron Lopez Mazza, one of the members of the Mexican junta here, who was recently arrested charged with receiving mail that did not belong to him, was released today on his own recognizance. He will be given a hearing next Wednesday.

**BLIZZARD DEATH  
LIST GROWING**

Many People Frozen and Lost to Live Stock Was Heavy—Sheep and Goats Suffered Most.

Carlsbad, N. M., Dec. 1.—At least ten men in this vicinity lost their lives in the blizzard of last week and live stock, especially sheep and goats, perished by the hundreds as the result of the cold. Reports from other points in the southwest, are equally as alarming. S. T. Hord, the young man who was lost in the snow on the Lone Tree ranch has not yet been found. He is undoubtedly dead. Four native sheep herders have been missing for two weeks from a ranch fifty miles north of Carlsbad. A number of sheep herders have been brought here for treatment for frozen feet and hands.

On the ranch of A. J. Crawford, a citizen of Carlsbad, 2,000 head of sheep jumped over a draw into a canyon and piled up in a 30-foot snow drift. They were followed by the Mexican herder, and when they were dug out the Mexican was found dead on top of the sheep and 1,000 of the animals were dug out dead from smothering.

**ESCAPED CONVICT  
AGAIN ARRESTED**

James Grimes, Safe Blower, Held By Rock Island Officials in Oklahoma—Wanted Here.

James Grimes, who escaped from the Territorial Penitentiary here early last summer by concealing himself in a carload of brick which was hauled out of the prison yard, has been re-arrested and is now in jail at Anadarko, Oklahoma, according to the statement made this morning by Special Officer O. W. McIntosh of the Rock Island, who reported the matter to the prison authorities. Officer McIntosh says that shortly before his arrest, Grimes fell from a freight car and injured his leg, causing him to lose about twenty pounds in weight. This makes his identification rather difficult. However, when confronted with his record at the penitentiary he admitted that he was the man wanted and said that he would willingly return to New Mexico and complete his sentence of seven years for safe blowing. He had six years yet to serve. Grimes is willing to return under his present sentence rather than stand trial for breaking into a car and committing other offenses for which the Rock Island officials will prosecute him. He fears that in Oklahoma, he will receive a heavier sentence than the one that now hangs over him. Arrangements will probably be made to fully identify the escaped convict and secure his return to the penitentiary.

**LOADED DICE IN EFFECTS  
OF PRETTY CONFIDENCE GIRL**

Salida, Colo., Dec. 1.—Loaded dice and other crooked gambling paraphernalia have been found in the baggage of Cecil Monte, a 20-year-old girl, and Robert Walker, her companion, who are under arrest at Salida. They were taken into custody on a charge of having robbed a young man here of \$30. The couple claim to be from Raton, New Mexico.

**\$10,000 FOR POOR MACHINIST  
EMPLOYED IN ALBUQUERQUE**

Albuquerque, N. M., Dec. 1.—Charles Koch of this city, a machinist employed by the Santa Fe Railway Company and whose wife works in a hotel, has received notice that a relative who died recently in Chicago, willed him \$10,000. He did not even know that he had a wealthy relative living and was overjoyed at the news of his good fortune.

**WILL BUILD  
NEEDED SIDEWALKS**

Councilman John H. Walker Will Begin Work at Once—Delivery of Bricks Today.

John H. Walker, member of the City Council and chairman of the committee on streets and bridges, called at the office of the New Mexican this forenoon and explained the status of the proposed sidewalk on Montezuma Avenue from the Santa Fe Railway depot to Galisteo Street. It was found that City Clerk A. P. Hill had been directed two months ago to advertise for bids for the construction of the walks, but had failed so to do. Thereafter Councilman Walker requested authority to proceed which was granted him. Immediately after the last council meeting he left an order at the territorial penitentiary for 25,000 paving bricks and 1,000 blocks for the purpose of laying the sidewalk on Montezuma Avenue. Delivery of these bricks was commenced today and Mr. Walker states that he will give the matter his personal attention and let the contracts for construction at once. He is of the opinion it is best and that it will be the quickest way to let two contracts in order that the sidewalk which is very necessary might be completed speedily and promptly. Mr. Walker is a civil engineer of ability and has had considerable experience also in the construction of sidewalks and pavement. He is very conscientious and this means that he will see to it that the proper kind of walk is laid. The property owners along the street are willing to pay the expense and there is every reason to believe that the greatly desired brick pavement on that thoroughfare will become a fact before the session of the next assembly. This will prove a very good thing and Mr. Walker will be remembered and praised for his timely work.

**MEXICAN GOVERN-  
MENT TO BUY CENTRAL**

Reported That Federal Ownership or Control of All Railroads in South Republic is Desired.

New York, Dec. 1.—It is currently reported here that the Mexican government through its agents is again making an attempt to buy a controlling interest in the Mexican Central Railway with the view of consolidating as much as possible, all railroads in the Republic under federal control. It is reported that H. Clay Pierce and other capitalists interested have set a price on 200,000 shares of the Mexican Central stock and negotiations for the sale are still under way. The directors of the line have accepted the resignation of President Robinson and are looking for a more up to date man to operate the road.

**SECURED MONEY  
ON ANOTHER'S CATTLE**

Charge Against J. S. Dowlen in Jail at Tucumcari and Wanted at Lawton, Oklahoma.

Captain Fred Fornoff of the New Mexico Mounted Police has received word from Mounted Policeman C. E. Dudley that he arrested and placed in jail at Tucumcari, J. S. Dowlen who is wanted by the officers at Lawton, Oklahoma, on a charge of securing money on cattle which he did not own. Dowlen will be taken to Lawton as soon as an officer can secure the necessary papers. Since arriving in New Mexico, Dowlen has been following his occupation which was that of a cowboy. He made no resistance when the mounted policeman arrested him.

**SPECIAL COURTS FOR  
LAND APPEAL CASES**

Washington, Dec. 1.—Senator Heyburn, at the opening of the session of Congress next Monday, will introduce a bill creating United States land courts in each of the public land states, in which an appeal may be taken from any final decision by the register and receiver in regard to the right to enter the public lands.

From these courts an appeal will lie to a national land court, to be provided by the bill, with headquarters at Washington and consisting of three judges.

Mr. Heyburn thinks this will relieve the general land office and the interior department of the necessity for deciding local controversies affecting the entry of public lands, will greatly curtail the expense and delay incident to such contests and at the same time secure judges who will be appointed for their special fitness and ability to handle such cases.

**COULDN'T COLLECT  
BANK FAILS**

Kiowa Institution Closes Doors With Liabilities Exceeding Assets.

South McAlester, I. T., Dec. 1.—The Bank of Kiowa, twenty-five miles south of here in the Choctaw nation closed its doors yesterday on account of slow collections and the inability to realize on its assets. The bank has a capital of \$10,000 and owed \$8,000 borrowed money. Its liabilities exceed its assets.

**ATTENDED THEATER  
AND WAS SHOT.**

Kazan, Dec. 1.—The chief of police in this city was shot and killed last night while leaving the theater. The assassin was arrested.

**TODAY'S NEWS SERVICE**

Page 1.—Japanese Barred From Schools; Leaders Paid to Call Strike; Junta Members Are Indicted; Tobacco Houses Burned By Mob; Telegraph and Local News.

Page 2.—Editorial.

Page 3.—Striking Machinists Disabled Engines; George C. Cowles Placed in Charge; Boy Shot and Killed Man; Firemen Have Many Troubles; New Hospital at Silver City.

Page 4.—Social and Personal.

Page 5.—Minor City Topics.

Page 6.—Hotel Arrivals; Territorial News Stories.

Page 7.—New Mexican's Daily Short Story.

Page 8.—Continuation Personal and Social and Minor City Topics; Official Matters; Market Reports by Wire; Telegraphic and Local News Stories.

**LEADERS PAID  
TO CALL STRIKE****Sensational Testi-  
mony at Shea  
Trial.****PRICE WAS ONLY \$1,500****Sum Paid by Chicago Gar-  
ment Workers to Team-  
sters' Officers.**

Chicago, Dec. 1.—Sensational evidence was given today in the trial of Cornelius P. Shea, president of the International Brotherhood of Teamsters' strike in 1905. The first witness was Albert Young, president of the United Teamsters of America, who yesterday entered a plea of guilty to the charge of conspiracy made against him in connection with the strike in 1905 and offered to turn state's evidence.

**Divided Up \$1,500 Received From  
Garment Workers.**

According to the statement of Young on the stand, Robert Noren, business agent of the Garment Workers' Union provided as funds \$1,500, which was divided between Shea and the other labor leaders to induce them to call the strike of the teamsters for the purpose of aiding the garment workers of Montgomery Ward and Company who had been on a strike for a month. At the time of the payment of the money to Shea and others Noren was, according to Young, treasurer of the Chicago Federation of Labor.

**SNOW IN ES-  
TANCIA VALLEY**

Fall of Six Inches of White—Gould Spent Night at Willard and Left for East.

Special to the New Mexican.

Willard, Dec. 1.—A general snow storm prevailed in this section last night and today. In a good many spots snow is six inches deep. This forenoon it snowed heavily at Moriarty, McIntosh, Estanola, Willard and Torrance. It rained at Kennedy.

George Gould, head of the great Gould railroad system, was a visitor in Willard recently. He arrived on a special train over the Eastern Railway of New Mexico and spent one night here. The following morning he left for the East on the Belen cutoff, presumably for some point where a Gould line is likely to cross the cutoff in the future.

**JAPAN TO FIGHT  
UNITED STATES**

Consul at Yokohama Alleged to Have Made Statement in An Interview.

Washington, D. C., Dec. 1.—Henry B. Miller, United States consul at Yokohama, will be given an opportunity by the state department to affirm or deny a published interview in which he is quoted as saying that the Japanese are organizing their army and navy to fight the United States. A clipping of the alleged interview has been forwarded to Miller and the statement in his answer will be accepted by the state department as conclusive.

**COULDN'T COLLECT  
BANK FAILS**

Kiowa Institution Closes Doors With Liabilities Exceeding Assets.

South McAlester, I. T., Dec. 1.—The Bank of Kiowa, twenty-five miles south of here in the Choctaw nation closed its doors yesterday on account of slow collections and the inability to realize on its assets. The bank has a capital of \$10,000 and owed \$8,000 borrowed money. Its liabilities exceed its assets.

**ATTENDED THEATER  
AND WAS SHOT.**

Kazan, Dec. 1.—The chief of police in this city was shot and killed last night while leaving the theater. The assassin was arrested.

**TODAY'S NEWS SERVICE**

Page 1.—Japanese Barred From Schools; Leaders Paid to Call Strike; Junta Members Are Indicted; Tobacco Houses Burned By Mob; Telegraph and Local News.

Page 2.—Editorial.

Page 3.—Striking Machinists Disabled Engines; George C. Cowles Placed in Charge; Boy Shot and Killed Man; Firemen Have Many Troubles; New Hospital at Silver City.

Page 4.—Social and Personal.

Page 5.—Minor City Topics.

Page 6.—Hotel Arrivals; Territorial News Stories.

Page 7.—New Mexican's Daily Short Story.

Page 8.—Continuation Personal and Social and Minor City Topics; Official Matters; Market Reports by Wire; Telegraphic and Local News Stories.



## SANTA FE NEW MEXICAN.

THE NEW MEXICAN PRINTING COMPANY, PUBLISHERS.  
MAX. FROST, Editor. JOHN K. STAUFFER, Sec'y-Treas.

Entered as Second Class Matter at the Santa Fe Postoffice.

RATES OF SUBSCRIPTION.	Daily, six months, by mail..... 4.00
Daily, per week, by carrier..... \$ .25	Daily, three months, by mail..... 2.00
Daily, per month, by carrier..... 1.00	Weekly, per year..... 2.00
Daily, per month, by mail..... .75	Weekly, six months..... 1.00
Daily, one year, by mail..... 7.50	Weekly, per quarter..... .75

The New Mexican is the oldest newspaper in New Mexico. It is sent to every postoffice in the Territory and has a large and growing circulation among the intelligent and progressive people of the Southwest.



## SOME POPULATION ESTIMATES

New Mexico at the November election cast 45,775 votes, Arizona 23,562, or not one half as many. As interest was equally intense in both territories, it would seem therefore, that Arizona does not have one half the population of New Mexico. Multiplying the number of votes cast by seven, the following population figures for each territory would result: New Mexico 329,425; Arizona 164,934, or a total of almost half a million. In other words, in the two territories there do not live as many people as in the city of Baltimore or of St. Louis, or only one sixth as many as in the city of Berlin, room for many more and that they are coming at the rate of 5,000 to 10,000 a month is shown by the Land Office statistics of the past year.

In population on the same basis, New Mexico counties rank as follows: San Miguel 32,411, Bernalillo 30,923, Colfax 25,221, Rio Arriba 20,129, Socorro 18,739, Santa Fe 17,654, Mora 15,134, Grant 14,021, Taos 13,730, Dona Ana 13,377, Valencia 12,215, Union 11,382, Chaves 11,242, Guadalupe 10,409, Otero 9,506, Eddy 8,645, Lincoln 8,211, Roosevelt 8,127, Sandoval 7,140, Quay 6,748, San Juan 6,706, Torrance 6,258, Sierra 5,592, Luna 3,675, McKinley 3,619. To these figures should be added over 14,000 Indians in the counties of Santa Fe, Bernalillo, Valencia, McKinley, Sandoval, Rio Arriba, Taos, Lincoln, Otero and San Juan. Taking this into consideration, it will be seen that the seven counties of San Miguel, Bernalillo, Colfax, Rio Arriba, Santa Fe, Mora and Taos contain a greater population than the other eighteen counties and as large a population as Arizona. These seven are all contiguous to each other and form the center of Northern New Mexico. They for instance, contain more than five times the population of the lower Pecos valley, or the three counties of Chaves, Eddy and Roosevelt. In fact, San Miguel and Bernalillo counties have each a considerably larger population than those three Democratic counties which contain only about one twelfth of the population of the Territory. Another group of populous counties is composed in the eight which have 8,237 inhabitants, or one fourth of the population of the Territory. The three northeastern counties, Union, Quay and Guadalupe have 28,224 inhabitants, just few more than the three Pecos valley counties to the south of them. The northeastern counties have 30,460 people, therefore, the Pecos Valley, or southeastern corner, despite recent rapid growth, is still the most sparsely inhabited region of New Mexico, excepting the three counties of the northwestern corner, and in population is exceeded by each of the two most populous and by any group of two of the north central counties.

In growth during the past two years, Bernalillo leads with an addition to its population in that time of 6,118, mainly in the city of Albuquerque. Colfax county is a close second with an increase of 5,600, mostly in the coal camps. Eddy county is third, with an increase of 4,410, mostly in the Artesian region. Roosevelt is fourth in rank as far as increase during the past two years is concerned, having gained 4,053 in population. Quay shows an increase of 2,205, Dona Ana of 1,827, Grant of 1,645, Guadalupe 1,176, San Juan 681, Torrance 683, Chaves 553, Taos 521, Luna 422; San Miguel county shows the largest apparent loss, 1,777; Mora county comes next with an apparent loss of 1,253. Sandoval third with a loss of 917 caused by the closing down of work in the coal camp of Hagan and other mining camps and the creation of the Jemez Forest Reserve. The loss in other counties is: Valencia 721, Santa Fe 686, McKinley 642, Rio Arriba 428, Socorro 406, Otero 329, Union 229, Lincoln 210 and Sierra 112. In Otero county, the closing of railroad shops at Alamogordo, in Lincoln the abandoning of the Capitan coal mines, in Santa Fe the cessation of work in the coal camp of Madrid, in Socorro the frequency of earthquakes, in McKinley the shutting down of coal mines, are some of the causes that have contributed to a decline of population during the past two years, which, however, is more apparent than actual, for these same counties have many new residents, who were not entitled to vote. Taken all, in all, New Mexico shows a gratifying growth in population, an increase that exceeds 60 per cent since the last census was taken and at the present rate of increase will exceed one hundred per cent by the 1910 census a little less than four years hence.

## THE TRADE OF THE SAN PEDRO AND GOLDEN CAMPS.

News that the Santa Fe Gold & Copper Company, which is controlled by the Lewishon Brothers, who have great copper interests also in Utah and in Tennessee, is ready for active work on its properties and smelters in the San Pedro mining camp in south Santa Fe County will be hailed by the people of this county with the greatest satisfaction. Four hundred miners are to be employed steadily and the output is to be made as great as the ore deposits, the labor of these men and best of machinery will allow. In the latter 70's and in the early 80's, the San Pedro mining camp was one of the most important and most prosperous not only in New Mexico but in the entire Southwest. The deposits are extensive and it was demonstrated that they could be worked with a

profit and to advantage for all concerned, the owners and the men employed. However, litigation set in and it took years before this was ended. The mines, mills and smelters were shut down and have been idle for many years. The control of the stock of the Santa Fe Gold & Copper Company finally went into the hands of the Lewishon Brothers, who are among the leading operators in copper and in copper mining in the country. Evidently, the resumption of work is brought about by the unprecedented demand and high price of copper which has obtained for some time and is the rule now. This state of affairs bids to keep up for many years as the demand for copper is constantly on the increase and as it is used more abundantly daily by manufacturing interests, in machinery, by telegraph lines, by telephone companies and many other manufacturing concerns. The employment of two miners at San Pedro means the supply of a population of 2,000 people who spend money freely not only for the necessities of life but for many luxuries. Santa Fe merchants twenty-five years ago controlled the trade of south Santa Fe County and they should do it again. They have everything in their favor now provided they will rustle. If they indulge in the "mammoth" policy they will get lost in the shuffle and other towns will get the major share of the profitable business that will develop in the San Pedro and Golden mining camps. The prosperity of south Santa Fe County ought to add greatly to the prosperity of the Capital City and will do so if the business men and merchants here will take advantage of the situation, fill orders promptly at lowest possible figures and have their representatives on the ground to drum trade. The business of the two mining camps will not come to Santa Fe because it ought to, it will go where the best, most strenuous and most sensible efforts are made to procure it. There is no good reason under the provisions of the Interstate Commerce law why Santa Fe wholesale and retail merchants have not as good a chance in securing the business there as have merchants in the towns to the north and south of this city. Vim, energy, enterprise and fair dealing will control the outcome and Santa Fe merchants have the inside track if they will take it in proper manner.

## RAILROAD PASSES IN THE SUNFLOWER STATE.

Senator Waggoner of Atchison, attorney for one of the leading railroads in the Sunflower State, is a member of the Kansas legislative assembly, and proposes to introduce a bill doing away with railroad passes altogether in the next session of that body. If there is any one man in Kansas who knows "what's what or who's who" in the railroad pass line, it is certainly State Senator Waggoner. He has handled the colored bits of pasteboard and slips of paper commonly known as time and trip passes with such dexterity, with such uniform success, with such great ease and so much that it must be admitted that he has a serious object in view in the preparation and introduction of the bill in question. It means that the road he represents has come to the conclusion that the time has arrived in Kansas to put a stop to the issue even of state passes, except to actual and absolute employees of the road and to such persons as may receive free transportation under the provisions of the Interstate Commerce Commission. There can be no doubt that from and after January 1st, interstate passes will be but a thing of the past and but a memory.

The Topeka State Journal alluding to the proposition states that there will doubtless be many measures introduced in the coming legislature intended to carry out some of the ideas promulgated in the Square Deal questions. Strange as it may seem, Senator Waggoner, of Atchison, will hand out early in the coming session a bill to prohibit railroad passes. Incidentally Senator Waggoner is a railroad attorney and in that connection he has learned a few things about passes. It has long been his opinion that the railroads would be fully as well off if they are passes were done away with, provided the prohibition is made absolute; and as long as there is now a popular demand for the abolition of passes, Senator Waggoner believes this is a good time to push such a measure through. The bill to be introduced by the Senator from Atchison will make it a felony for a pass to be issued by a railroad official, or requested or used by others than bona fide railroad employees. In order to enforce the law the bill will empower every train conductor to arrest every person presenting an illegal pass and make it the conductor's duty to turn the offender over to the officers of the law at the first station possible.

The law, says Senator Waggoner, should prescribe the form of passes to be issued to railroad employees, so that the legal pass shall show in what capacity its possessor is employed. To the layman this sounds like a pretty good sort of a measure to accomplish the object sought—with the proper penalties attached to it, of course—and coming from such an authority, both on passes and on constitutional law, it ought to be a first-class bill.

## THEY ARE BUILT THAT WAY.

It is pretty well understood that there were many illegal votes cast at the last election, for O. A. Larrazolo, Democratic candidate for Delegate to the Sixtieth Congress, in several of the counties. It is common talk that many Republican ballots had the name of O. A. Larrazolo pasted over that of W. H. Andrews, Republican candidate for Delegate to the Sixtieth Congress, before these ballots reached the voters who used them. This action was wholly unauthorized by law, and is a crime punishable by heavy fine and imprisonment. Of course, the Democratic campaign bosses did not fail to take advantage of this violation of the statute at every possible place. They are always quick and rapid to condemn whatever they consider detrimental to Democratic Party success by the opposite political party; they are still more quick and swift in taking advantage of everything, no matter how illegal, how fraudulent, and how dishonest, if it brings advantage to their own political ballfield. One cannot blame them much; they are built that way. "Bred in the bone."

It is reported that Hon. Carl A. Dalles, member-elect of the Legislative Council from the Eleventh District, composed of the counties of Otero, Lincoln and Torrance, will be pushed for the presidency of the Council by his friends. Hon. Charles A. Spless, of San Miguel County, has already been placed in nomination by his well-wishers and they are a great many, for the honorable position. Mr. Spless seems to have the inside track. There will be no bitter strife or contention over the position if the report is true. It will be amiably and amicably settled for the best interests of the people and of the Republican party.

Esquilpula C. Baca, of Sandoval County, has filed a contest against E. C. Abbott of this county for the seat in the House of Representatives of the 37th Legislative Assembly from the Tenth Legislative District, for which Mr. Abbott received majorities in both counties of the district, namely, Santa Fe and Sandoval. Mr. Baca has a long string of allegations in his contest papers; if these are sustained they will make a dandy change in the personnel of the next Assembly, but then, will they be sustained? That is another story.

If a decision of Judge Evans of the United States Circuit Court, sitting in Louisville, Kentucky, be good law, railroads and other corporations have the right to prevent their employees joining a labor organization. The question should be carried to the Supreme Court at once.

The Federal authorities are arranging a cordial and impressive reception for the Japanese naval squadron scheduled to visit San Francisco early in the spring, but whether the citizens of that city are to join in the welcome seems to be in doubt.

The election laws of New Mexico should receive careful attention by the 37th Legislative Assembly and many needed changes should be made. These laws have been tried and found wanting in many particulars.

Perhaps there is a connection between the announcement that Rudyard Kipling has taken to elevated trousers and the fancied deterioration in the quality of his literary output.

Pierpont Morgan has been taking the big end of everything so long that his equal for an "even break" on his Chicago traction interests got more snickers than sympathy.

Forest reserves are getting rather numerous in New Mexico. They are a good thing to have, but at times there is such a thing as having too much of a good thing.

If the decision of Judge Carpenter of Milwaukee, be good law, rich men cannot dodge the inheritance tax for their heirs by giving them the money before dying.

A German professor predicts changes in the world's map. As changes have been going on since there was a map, he'll be sure to make good.

It isn't boasting of its big business, but the Standard Oil Company is taking in more coin than ever; and it is about the same with the other trusts.

Pensions of shelled dual husbands come high—the Duke of Marlborough's American wife has to pay him \$100,000 a year to keep away from her.

Notwithstanding the enormous amounts it must be paying lawyers, the Standard Oil Company has recently declared its regular dividend.

Railroad employees are just human enough to want a little take-off when the profits are so big—hence the strike mutterings.

Somebody has discovered that Uncle "Joe" Cannon owes all his luck to a four-leaf clover. Fool discoveries will never end.

"Is a salary a rebate?" is one of the numerous puzzling questions confronting the Interstate Commerce Commission.

Japan will never get the Philippines by fighting, but that they couldn't be had on a strictly business basis is not so certain.

Senator Tillman was taking a long peep ahead, indeed, when he saw negro conductors on government owned railroads.

General Nelson A. Miles has returned from an European trip, but his Presidential boom is still in cold storage.

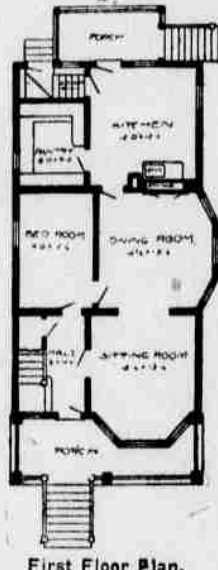
Everything moves fast where "Teddy" is. He beat the scheduled time for the Panama-trip by two whole days.

# THE AMERICAN HOME

## W. A. RADFORD EDITOR

Mr. William A. Radford will answer questions and give advice FREE OF COST on all subjects pertaining to the subject of building for the readers of this paper. On account of his wide experience as Editor, Author and Manufacturer, he is, without doubt, the highest authority on all these subjects. Address all inquiries to William A. Radford, No. 124 Fifth Ave., Chicago, Ill., and only enclose two-cent stamp for reply.

Building a house for a home is one of the most interesting propositions that a man can undertake. Every married man expects to build a house and every single man hopes to do so some time. If he doesn't he is not constructed on the right plan. It often



First Floor Plan.

happens that a man has a small family which may consist of himself and wife and possibly one small child. They don't want a large house, they don't need it and they don't want the care of it, but at the same time it is only business to build in such a way that the house may be sold if occasion should require. But no matter how small the house may be, a woman wants the down stairs to appear right. She naturally takes pride in having a well-arranged house neatly furnished



and well kept. If the plan suits her she is perfectly happy in working out the details.

In this plan only two rooms are finished off upstairs. About one-third of the upper floor is left unfinished to be used as an attic store room. This saves expense when building, and the housewife has fewer rooms to take care of afterwards. Two rooms may be added here any time in the future at very little expense.

Two bedrooms and bathroom upstairs makes a very nice arrangement for a family of two, and leaves a spare bedroom for use when required. The bedroom downstairs may be made into a library, if so desired. It is really more appropriate for this purpose than it is for a bedroom, if so wanted by the family. Families are different, their tastes and requirements are different; what suits one would not suit another, but this room would make a very nice library or smoking den, and that is what every man should have. If he doesn't smoke, some of his friends do, and most women object to having tobacco smoke scattered promiscuously through any other part of the house, and they cannot be blamed for this objection. The house means more to a woman than it does to a man, and it is her pride and ambition to have it exactly right and to have things as nice and delicate as her keen sense of propriety suggests.

The sitting room and dining room in this plan are almost like one long room. The archway between may be fitted with portieres or not. If portieres are used and looped well back the view is not obstructed to any great extent, and a company of a dozen or two may comfortably occupy the two rooms. The general plan of this house is what used to be called the Boston style. It is rather after the long and narrow order, being 22 feet wide and 38 feet long, exclusive of porches.

There are some advantages in a house of this shape. You get more light and better air. The rooms may be placed to better advantage without using diagonal partitions, which are objectionable because they do not leave nice corners to place good pieces of furniture. Every corner in this house is square, except the bay windows, and nobody wants a square corner in a place of this kind. The

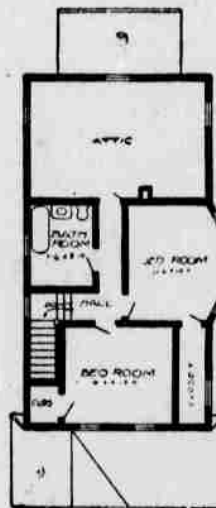
The New Mexican Printing Company has on hand a large supply of writing tablets and scratch pads suitable for school children, lawyers, merchants and also for home use, which will be cleaned out at 10 cents a pound and cheaper if ordered in larger quantities. These tablets are made from the odds and ends of the best paper obtainable, and you are getting double your money's worth when buying. GIVE US A CALL AND EXAMINE THEM.

Subscribe for the Daily New Mexican and get the news.

display here is principally composed of curtains and a nice chair or two designed for looks as well as comfort. The general air of this house is what may be called "tony." It has a neat, clean, dignified appearance, rather on the prosperous order, but the beauty is in the design rather than in the expensive finish. The materials are good but ordinary, no unnecessary work or expense is specified, but everything is plain and substantial.

The back porch is a feature a little out of the ordinary. It is intended for a sort of a summer addition to the kitchen, an out door work room that may be enclosed with climbing vines and furnished with a couple of old-fashioned rocking chairs, with gingham-covered cushions, somewhat on the grandmother order, but comfortable as everyone knows. This back porch offers a good place for an ice box, especially in the summer time, which is the only time in the year when an ice box in this kind of a house is really necessary. The cellar is cool enough at other times, and is fairly convenient to the kitchen.

The outside grade entrance to the cellar is a great help. It gives an easy entrance from the garden for carrying things in and out without tracking through the kitchen, a feature that every woman knows exactly how to appreciate. A long cellar like this is especially well designed for keeping fruit. With a partition behind the furnace the part under the kitchen may be kept cool enough to keep apples and vegetables without drying up. The cellar walls are built with cement mortar and broken stone or rubble. All stone wall surfaces are plastered outside and the joints filled and beaded with black beading, which gives the wall an attractive finish. If the house faces the north it would be better to put the fruit room in the front end of the cellar. The north end is several degrees cooler than the south end, and it is not necessary to in the sitting room.



Second Floor Plan.

The sitting room and the next hottest pipe in the bathroom.

The old-fashioned way of heating a house was to lead the biggest pipe to the lower hall and let the air float upstairs naturally, but natural conditions cannot always be depended upon to furnish good results. A good furnace man, if given plans before the building is started, can lay out a system of pipes that will heat every room without passing the air through the front hall. There is another extreme to this proposition, and that is to keep the front hall shut off and not have any air carried in that direction. This is as much of a mistake as the other. Ventilation is just as important as heat and you cannot have good ventilation with the hallway shut off.

If you cannot afford to pay for a daily paper, subscribe for the Weekly New Mexican Review and get the cream of the week's doings. It is a good paper to send to your friends.

Letter heads, bill heads, note heads, envelopes, of all sizes printed and sold by the New Mexican Printing Company at low rates and in quantities to suit purchaser.

Subscribe for the Daily New Mexican and get the news.

## THE PALACE HOTEL

WILLIAM VAUGHN, Propri.

One of the Best Hotels in the West.

Cuisine and Table Service Unexcelled.

Large Sample Rooms for Commercial Travelers.

Santa Fe, New Mexico. - Washington Avenue

## BERGERE INSURANCE AGENCY COMPANY

GENERAL AGENTS FOR NEW MEXICO FOR

PENN MUTUAL LIFE INSURANCE COMPANY  
OF PHILADELPHIA, PA.

Purely a Mutual Insurance Company.

National Surety Co., of New York

Court, Fidelity and Public Official Bonds—Lowest Rates.  
Strong Line of Fire Insurance Companies.

Palace Avenue

SANTA FE, ... NEW MEXICO

LACOME & GABLE, Proprietors.

## CLARE HOTEL



Postal Telegraph-Cable Co. Office.

American and European Plan. Commodious Sample Rooms. Steam Heated. Electric Lighted. Every Room a Good One. Short Order Department Open Day and Night. Press the Button we do the rest.

## Coronado Hotel

G. LUPE HERRERA, PROPRIETOR.

Of the Coronado Restaurant.

Will Do His Own Cooking From This On.

The Coronado is the place where you get the best 25 cent meal in the City. First Class Short Order. Service a la Carte. Try us. Satisfaction Guaranteed.

FURNISHED ROOMS IN CONNECTION.

South Side Plaza. 222 San Francisco St.

G. LUPE HERRERA, Proprietor.

SANTA FE, NEW MEXICO.

## DUDROW &amp; MONTENIE

Undertakers and Embalmers



ALL KINDS OF PICTURE FRAMING.

Dudrow's Office Building.

Day Telephone 35

Residence No. 106, Grant Avenue, Foot of Palace Avenue, Nights & Sunday. Telephone No. 142.

## OUR PLACE

OTTO RETSCH  
Proprietor.

Fine Wines. Liquors and cigars.

WEST SIDE OF PLAZA : : : SANTA FE, N. M.



## THE FIRST NATIONAL BANK

OF SANTA FE.

The oldest banking institution in New Mexico. Established in 1870.  
**RUFUS J. PALEN, President.** **JOHN H. VAUGHN, Cashier.**  
**LEVI A. HUGHES, Vice President.** **ALFRED H. BRODHEAD, Assistant Cashier.**

Capital \$150,000. Surplus and Undivided Profits \$65,000.

Transacts a general banking business in all its branches. Loans money on the most favorable terms on all kinds of personal and collateral security. Buys and sells bonds and stocks in all markets for its customers. Buys and sells domestic and foreign exchange and makes telegraphic transfers of money to all parts of the civilized world on as liberal terms as are given by any money-transmitting agency, public or private. Interest allowed on time deposits at the rate of three per cent per annum, on a six month or year's term. Liberal advances made on consignments of live stock and products. The bank executes all orders of its patrons in the banking line, and aims to extend to them as liberal treatment in all respects, as is consistent with safety and the principles of sound banking. Safety Deposit boxes for rent. The patronage of the public is respectfully solicited.

## NEW MEXICO MILITARY INSTITUTE

ROSWELL, NEW MEXICO.

### THE MILITARY SCHOOL OF NEW MEXICO

Established and Supported by the Territory.

**RIGHT MEN INSTRUCTORS**, all graduates of Standard Eastern Colleges. New buildings, all furnishings and equipments modern and complete; steam-heated, electric-lighted, baths, water-works, all conveniences.

**TUITION, BOARD and LAUNDRY**, \$250 per session. Session is three terms of thirteen weeks each.

**ROSWELL** is a noted health resort, 3,700 feet above sea-level; well-watered. Sunshine every day from September to June.

**REGENTS**—Nathan Jaffa, W. M. Road, W. M. Atkinson, W. A. Finley and E. A. Oshon.  
 For particulars address **COL. J. W. WILLSON, Supt.**

## OJO CALIENTE HOT SPRINGS.

These Celebrated Hot Springs are located in the midst of the Ancient Cliff Dwellers, twenty-five miles west of Taos, and fifty miles north of Santa Fe, and about twelve miles from Baranca Station, on the Denver & Rio Grande Railway, from which point a daily line of stages runs to the springs. The temperature of these waters is from 90 to 122 degrees. The gases are carbonic. Altitude, 6,000 feet. Climate very dry and delightful the year round. There is now a commodious hotel for the convenience of invalids, and tourists. People suffering with consumption, cancer, and other contagious diseases, are not accepted. These waters contain 1,686.24 grains of alkaline salts to the gallon, being the richest alkaline Hot Springs in the world. The efficacy of these waters has been thoroughly tested by the miraculous cures attested to in the following diseases: Paralysis, Rheumatism, Neuralgia, Malaria, Bright's Disease of the Kidneys, Syphilitic Mercurial Affections, Scrofula, Catarrh, La Grippe, all Femal Complaints, etc. Board, lodging and bathing \$2.50 per day; \$15 per week; \$50 per month. Stage meets Denver trains and waits for Santa Fe train upon request. This resort is attractive at all seasons and is open all winter. Passengers for Ojo Caliente can leave Santa Fe at 9 a. m., and reach Ojo Caliente at 4 p. m. the same day. Fare for round trip from Santa Fe to Ojo Caliente, \$7.40. For further particulars, address

**ANTONIO JOSEPH, Proprietor.**

Ojo Caliente, Taos County, N. M.

## H. C. Yontz

DEALER IN

Watches, Clocks, Jewelry  
 and Hand Painted China.

Repair of Fine Watches and Jewelry Work a Specialty. Watches, Clocks, Jewels and Indian Goods. Filigree at Wholesale and Retail.  
 West Side Plaza, Santa Fe, N. M.

MANUFACTURER OF

Mexican Filigree

JEWELRY

## STRIKING MACHINISTS DISABLED ENGINES

Grand Jury at Las Vegas Returns Indictments Against Two Men.

Indictments were returned by the United States grand jury during the recent term of the federal district court at Las Vegas against John C. Waters and Louis Meyers, Jr., charging them with conspiracy in disabling locomotives of the Atchison, Topeka & Santa Fe Railway. The two men are machinists who were employed in Las Vegas at the time of the machinists' strike several years ago on the Santa Fe system. Meyers was arraigned in this city several months ago before United States Commissioner J. P. Victory but he was discharged because of a lack of evidence. He has been rearrested but Waters is still at large. The latter is believed to have left New Mexico. His present whereabouts are unknown. The specific charge against the two men is for attempting or conspiring to wreck locomotives by putting crushed steel in the oil cups. Meyers is charged with being an accomplice although not taking an active part in the engine "doping."

## GEORGE C. COWLES PLACED IN CHARGE

Of All Operations of American Lumber Company—Knows Business From Ground Up.

Albuquerque, N. M., Dec. 1.—With the resignation of John Belknap as superintendent of the American Lumber Company's operations at Thoreau, George C. Cowles assumes complete charge of the company's operations as superintendent. Mr. Belknap will go to Oklahoma to look after his own large business interests there. Mr. Cowles has spent a number of years with the American Lumber Company, coming to Albuquerque from Saginaw, Michigan. He built and equipped a number of plants for his company and knows the business from the ground up. John D. Carpenter will have charge of the logging operations at Thoreau and Ralph Johnson, son of President Johnson, will be his assistant.

## BOY SHOT AND KILLED MAN

H. J. Hammons of Tucumcari, Victim of Careless Youth With Small Caliber Rifle.

Tucumcari, N. M., Dec. 1.—H. J. Hammons of this place, was shot and instantly killed recently by the eight year old son of Dr. Boggs who had been out hunting. The boy had a twenty-two caliber rifle and tried to climb into the end of a wagon driven by Mr. Hammons. He first dropped the rifle over the end gate. It struck on the hammer and exploded. The bullet penetrated Mr. Hammons' back just beneath the shoulder blade and lodged in the heart, death being instantaneous. The boy called for assistance as soon as he found what he had done and the body was removed to town and later sent to the old Hammons home in Kentucky.

## FIREMEN HAVE MANY TROUBLES

El Paso & Southwestern Enginem Wanted Storm Curtains—Fresh Beds, Coffee and Good Food.

Alamogordo, N. M., Dec. 1.—Twenty-five firemen have gone on a strike on the El Paso & Southwestern Railroad, as the result of the recent blizzard. The men first demanded storm curtains for their engines. Their principal contention, however, was that at the new division point at Carizozo, they never secured a fresh bed, often could get no bed at all, were unable to secure hot coffee during the blizzard and declared the food they had to eat was unpalatable. A number of native section hands also went on a strike because of the cold weather.

Piles get quick relief from Dr. Shoop's Magic Ointment. Remember it's made alone for Piles—and it works with certainty and satisfaction. Itching, painful, protruding, or blind piles disappear like magic by its use. Try it and see! Sold by Fischer Drug Co.

# Willard Will Make a Town WILLARD, THE GATEWAY

Willard is located in the southern part of the wonderful Estancia Valley at the junction of the new main line of the A. T. and S. F., and the Santa Fe Central, with a prospective line to El Paso surveyed part way. It has fine water in abundance and it is the only point on the entire new line where there is good water and plenty of it. The A. T. and S. F. Company own a body of land there and will build and equip besides a new \$10,000.00 concrete depot building, the largest pumping station in the west, pumping water as far as the Rock Island crossing, sixty miles east. Lots are cheap NOW and the people have the smile that won't come off. It is near the geographical center of New Mexico and of Torrance County, and its railroads make it easily accessible to all parts of the country. It is a natural gateway. It has a live, progressive class of citizens who PULL TOGETHER. It has Push, it has promise, it has excellent business openings. It is worth your while to investigate. If you are a live one, Willard wants you. The townsites is owned by

## Willard Town and Improvement Co.

Call on or address  
**JOHN W. CORBETT, Agent, Estancia, New Mexico.**  
**CARL A. DALIES, OR WM. TAYLOR, WILLARD.**  
 By reason of Homeseekers tickets reading to other points the country around Willard has been somewhat overlooked and vacant land yet remains open to homestead entry comparatively close in.

**JOHN BECKER, Pres. and Gen. Mgr.**  
**WILBUR A. DUNLAVY, Vice Pres.**

**WM. M. BERGER, Secretary.**  
**LOUIS C. BECKER, Treasurer.**

## NEW HOSPITAL AT SILVER CITY

Local Physicians Start Institution—Are Caring for Victims of White Plague.

Silver City, N. M., Dec. 1.—This place now has a new hospital. It is known as the Silver City Hospital. Two of the local physicians are the founders. They have secured a nine room building for the purpose which has been remodeled to meet the requirements. St. Joseph's Sanitarium here has been taxed to its capacity for some time and because of a lack of room none but tubercular patients are being taken care of, except in the charity ward. Surgical cases principally will be received at the new hospital which is equipped with a modern operating room.

## PUBLIC SPEAKER INTERRUPTED.

Public speakers are frequently interrupted by people coughing. This would not happen if Foley's Honey and Tar were taken, as it cures coughs and colds and prevents pneumonia and consumption. The genuine contains no opiates and is in a yellow package. Ireland's Pharmacy.

Orino Laxative Fruit Syrup, the new Laxative, stimulates, but does not irritate. It is the best Laxative. Guaranteed or your money back. For sale at Ireland's Pharmacy.

## DANGER IN ASKING ADVICE.

When you have a cough or cold do not ask some one what is good for it, as there is danger in taking some unknown preparation. Foley's Honey and Tar cures coughs, colds and prevents pneumonia. The genuine is in a yellow package. Refuse substitutes. For sale at Ireland's Pharmacy.

Millions of bottles of Foley's Honey and Tar have been sold without any person ever having experienced any other than beneficial results from its use for coughs, colds and lung troubles. This is because the genuine Foley's Honey and Tar in the yellow package contains no opiates or other harmful drugs. Guard your health by refusing any but the genuine. For sale by Ireland's Pharmacy.

If "taken at the Sneeze Stage" Preventives—a toothsome candy Tablet—will surely and quickly check an approaching cold or Lagrippe. When you first catch cold—or feel it coming on—take Dr. Shoop's Preventives, and the prompt effect will certainly surprise and please you. Preventives, surely supply the proverbial "ounce of prevention." Sold in 5 cent and 25 cent boxes by Fischer Drug Co.

Reprint News-Herald: "There is at least one effective, safe, and reliable Cough Cure—Dr. Shoop's—that we regard as suitable, even for the youngest child. For years, Dr. Shoop bitterly opposed the use of opiates or narcotics in medicine, offering \$10 per drop to any one finding Opium, Chloroform or any other poisonous or narcotic ingredient in Dr. Shoop's Cough Cure. And the challenge is as yet unanswered. Here is one manufacturing physician, who welcomed with much satisfaction, the new government Pure Food and Drug Law. The public can now protect itself at all times, by insisting on having Dr. Shoop's when a cough remedy is needed." Sold by Fischer Drug Co.

# WANTED

## Good White Miners

WAGES \$3.00 PER DAY.

## Good Board and Room ONE DOLLAR.

Apply to

## J. J. MAY, Mgr.

Hillsboro, New Mexico.

## TIME TO ACT. Don't Wait For The Final Stages of Kidney Illness—Profit by Santa Fe People's Experience.

Occasional attacks of headache, irregular urination, headaches and dizzy spells are common early symptoms of kidney disorders. It's an error to neglect these ills. The attacks may pass off for a time, but return with greater intensity. If there are symptoms of dropsy-puffy swellings below the eyes, bloating of limbs or ankles, or any other part of the body, don't delay a minute. Begin taking Doan's Kidney Pills, and keep up the treatment until the kidneys are well, when your old-time health and vigor will return. Cures in Santa Fe prove the effectiveness of this great kidney remedy.

Lino Romero, driver of delivery wagon for Kaune and Company, residence Palace Avenue, says: "Sometimes my back aches acutely, sometimes it was a dull pain just across the loins, and when in the acute stage, I have been laid up for two or three days at a time. I never took anything for it as the attacks seemed to disappear as mysteriously as they came, but when suffering from one I happened to read about Doan's Kidney Pills in a Santa Fe paper, and I went to Ireland's Pharmacy for a box. It absolutely stopped the pains and aches."

For sale by all dealers. Price 50 cents. Foster-Milburn Co., Buffalo, New York, sole agents for the United States.

Remember the name—Doan's—and take no other.

The New Mexican Bindery is turning out some of the most artistic binding in the Southwest. It is the most completely equipped bindery in the Rocky Mountain States south of its headquarters for legal blanks of all kinds. The company makes a specialty in handling land office blanks, necessary in homestead entries and in mineral applications. Prices low, especially in quantities. Circulars giving full information furnished on application.

## BON TON RESTAURANT. SHORT ORDER BILL OF FARE.

**MEATS.**  
 P. H. Steaks Pork Chops  
 Veal Cutlets Ham and Eggs  
 Liver and Bacon Mutton Chops  
 Pork Sausage Wienerwurst  
 Eggs, Any Style  
 Red or Green Chile Con Carne  
 Frijoles and Navy Beans  
**POZOLES, TAMALES**  
 Fried, Stewed, Escalloped, Pan Roasted, Oyster Loaf, Raw, Any Old Style.  
**FISH.**  
 Spanish Mackerel Bull Heads, Red Snapper, Lobsters and Frog's Legs, Shrimps, Halibut, Salmon, Pike, Perch, Herring and Black Bass.  
**GAME.**  
 Teal Duck Spring Chicken

## BIDS FOR LEGISLATIVE PRINTING, 1907.

Territory of New Mexico.  
 Office of the Secretary.  
 Santa Fe, November 16, 1906.  
 Bids in triplicate accompanied by a bond in the sum of \$500.00 for printing bills and the Governor's message, laws and journals in book form for the 37th Legislative Assembly of New Mexico, to order through the Secretary, will be received at this office until 3 o'clock p.m., on December 15, 1906, at which time they will be opened in the presence of the bidders. All printing to be done at the seat of government under the personal supervision of the Secretary. Specifications, samples of paper, etc., may be seen at this office.  
**J. W. RAYMONDS,**  
 Secretary of New Mexico.

## Notice.

The County Commissioners of Santa Fe County, hereby call for bids on the proposed bridge, to be constructed across the Rio Santa Fe, on Galisteo Street.

All bids to be based on the plans and specifications adopted by the said board and now on file in the office of the clerk of the Board of County Commissioners.

All bids to be made prior to the 10th day of December, 1906, and to be sealed and addressed to the Board of County Commissioners. Said bids to be opened on the 10th day of December, 1906, at 3 o'clock p. m., at the office of said board, and the contract awarded to the lowest bidder. The said board reserves the right to reject any and all bids.

The person to whom the contract shall be awarded, to give a bond in an amount to be fixed by said board, and in conformity with Chapt. 11 of the laws of 1899 of the Territory of New Mexico.

**ARTHUR SELIGMAN,**  
 Chairman Board County Com.

The New Mexican Printing Company has on hand a large supply of pads and tablets suitable for school work, the desk, and also for lawyers and merchants; good anywhere. We will sell them at five cents in book form, but will give a discount on quantities.

## Santa Fe Central Railway TIME TABLE

Effective Monday, February 26, 1906.

South Bound		North Bound	
No. 1	Mi.	Stations.	Alt. No. 2
1:20 p. m.	0	Santa Fe, Arr.	7:00 a. m.
1:35 p. m.	4	Donnellana	6:50 a. m.
2:00 p. m.	16	Vega House	6:40 a. m.
2:25 p. m.	22	Kenney	6:30 a. m.
2:50 p. m.	34	Stanley	6:20 a. m.
3:15 p. m.	41	Marley	6:10 a. m.
3:40 p. m.	53	Belmont	6:00 a. m.
4:10 p. m.	61	Estancia	5:50 a. m.
4:35 p. m.	69	Willard	5:40 a. m.
5:05 p. m.	81	Progresso	5:30 a. m.
5:35 p. m.	92	Holbrook	5:20 a. m.
7:15 p. m.	99	Torrance, Lve.	9:30 a. m.

Connecting at Santa Fe, N. M., with the Denver & Rio Grande Railroad for all points in Colorado, Utah, Idaho, Montana, Washington, and the Great Northwest.

Connecting at Torrance for all points east and west with Golden State Limited trains Nos. 43 and 44. Pullman berths reserved by wire.

For rates and information address **S. B. GRIMSHAW,**  
 General Passenger Agent, Santa Fe, To and From Roswell.

Connection made with Automobile Line at Torrance for Roswell daily. Automobile leaves Torrance for Roswell at 4 a. m. and arrives at Roswell at 12 noon. Automobile leaves Roswell for Torrance at 1 p. m. and arrives at Torrance at 10 p. m. The fare between Santa Fe and Torrance is \$6.25. Between Torrance and Roswell \$10. Reserve seats on automobile by wire. **J. W. STOCKARD,**  
 Manager Automobile Line.

## PLACE YOUR PROPERTY.

Why is it that the firm of Hughes & Delgado are making a success of the real estate business? It is because this firm is reliable and any property placed in their hands will be looked after in a businesslike manner. Office west of Plaza.

## THE BEAUTIFUL ESPANOLA VALLEY

Finest Possible Conditions for Fruit Raising—Abundance of Water.

The Espanola Valley of the Rio Grande beginning twenty miles north of Santa Fe and extending north twenty-five miles to Embudo is perhaps the greatest irrigated valley in New Mexico. No other valley has a better climate, soil, variety of products or more abundant supply of water for irrigation. The soil in this valley is free from alkali, cold, stormy winters or excessively hot summers; it is shut in by high mountains and as a fruit district the conditions are almost perfect. Thousands of acres lie uncultivated and eighty per cent of the waters of the great Rio Grande roll by unused. Home seekers are settling here rapidly and more are welcomed to help make this beautiful valley the best in the Rockies.

For further particulars in general prices of bearing orchards, improved and unimproved lands, etc., address Roscoe C. Bonney, real estate and immigration agent, Espanola, New Mexico.

## I CAN SELL Your Real Estate or Business No Matter Where Located

Properties and Business of all kinds sold quickly for cash in all parts of the United States. Don't wait. Write today describing what you have to sell and give cash price on same.

**IF YOU WANT TO BUY** any kind of Business or Real Estate anywhere, at any price, write me your requirements. I can save you time and money.

**DAVID P. TAFF,**  
**THE LAND MAN.**  
 415 Kansas Avenue,  
**TOPEKA, KANSAS.**

## REAL ESTATE BARGAINS.

You can get some bargains in the real estate line right now by calling on the reliable real estate dealers, Hughes & Delgado Office west side of Plaza.

Subscribe for the Daily New Mexican.

## Work Well Remington

Typewriters

Wear Well

# WANTS

FOR RENT—Room with bath—206 Chapelle St.

FOR RENT—Unfurnished house, Johnson St. L. A. Harvey

FOR RENT—Four-room house. Inquire "M", New Mexican.

FOR SALE—Fine business property San Francisco St. O. C. Watson & Co.

## HOUSES TO RENT.

Houses to rent, lease or for sale, furnished or unfurnished, good locations. Call on the reliable firm, Hughes & Delgado. Office west side of Plaza.

FOR SALE—General merchandise business on the El Paso & Southwestern in eastern New Mexico. Stock \$15,000, to \$20,000. Fine opportunity for right party. Can explain good reason for selling. Locality healthiest in New Mexico. Address inquiries to this paper.

## NOTICE.

Notice is hereby given that the undersigned has been appointed by the Probate Court of the County of Santa Fe executor of the last will and testament of Patrick F. Hanley, deceased. All persons indebted to the estate of the said decedent will settle their accounts with me.

All persons having claims against the said estate will file the same according to law and within the time thereby prescribed.  
**A. L. MORRISON, Jr.,**  
 Executor.

The New Mexican Printing Company is prepared to furnish cards de visite for ladies or gentlemen on short notice, in first class style at reasonable prices, either engraved or printed. Call on the New Mexican Printing Company and leave your orders.

Subscribe for the New Mexican and get the news.

(Homestead Entry No. 10,108.)

Notice for Publication.  
 Department of the Interior,  
 Land Office at Santa Fe, N. M.,  
 November 24, 1906.

Notice is hereby given that Anacleto Contreras, of Santa Fe County, N. M., has filed notice of his intention to make final five year proof in support of his claim, viz.: Homestead Entry No. 10,108, made October 12, 1906, for the S 12 NW 1-4, S 1-2 NE 1-4, section 4 township 18 N., range 10 E., and that said proof will be made before the register and receiver, at Santa Fe, N. M., on January 3, 1907.

He names the following witnesses to prove his continuous residence upon, and cultivation of the land, viz.: Rafael Montoya, Marcelo Jimenez, Maximino Jimenez, Bonifacio Lacerro, all of Santa Fe, N. M.  
**MANUEL R. OTERO,**  
 Register.

## NEW MEXICAN BARGAINS.

Herewith are some bargains offered by the New Mexican Printing Company: Code of Civil Procedure of the Territory of New Mexico, 1897, sheep bound \$1; paper bound, 75c; Missouri Pleading forms, \$5; Missouri Circuit Pleadings, \$6; the two for \$10; Adapted to New Mexico Code, Laws of New Mexico, 1899, 1901, and 1903, English leather, \$3; 1905 English and Spanish and Spanish pamphlet, \$2.25; full Pamphlet, \$2.75; full leather \$3.50; Sheriff's Flexible Cover Pocket Docket, single, \$1.25; two or more books, \$1 each; New Mexico Supreme Court Reports, Nos. 3 to 10, inclusive, delivered at publisher's price, \$3.30 each; Compilation Corporation Laws, 75c; Compilation Mining Laws, 50c; Reports Digest of New Mexico, 1905, full sheep, \$6.50, delivered; full list school blanks.



## LOCAL TIME TABLE.

Arrive.  
 No. 721.....12:10 p. m.  
 No. 723.....6:50 p. m.  
 No. 725.....11:15 p. m.

Depart.  
 No. 7:20.....8:15 a. m.  
 No. 722.....4:20 p. m.  
 No. 724.....7:40 p. m.  
 No. 720 connects with Nos. 10 and 2 east and No. 3 limited west.  
 No. 722 connects with No. 1 west.  
 No. 724 connects with No. 7 and 9 west.

No. 1 stops at all stations. Lamy to Albuquerque to discharge passengers from Santa Fe.

**G. H. DONART,**  
 Agent, Santa Fe, N. M.  
 City Ticket Office, Graton Bldg., east side Plaza, Santa Fe, New Mexico.

MINIMUM OF EXERTION

THEY GO TOGETHER IN A

MAXIMUM OF EXECUTION

**Remington Typewriter**

The Remington Typewriter lasts longest. So does the Remington Operator.

Wickoff, Seamans & Benedict, 327 Broadway, New York.



## Women's Shoe Styles.



Some stores set the styles by having the new shapes first. Other stores follow along about a season behind. Women who buy shoes here wear

### The Newest and Best to Be Had

There's not a new last, a new heel or a new leather that you cannot find here as soon as it appears on the market. Remember, we charge no more for our shoes than other stores ask for older styles. If we sell you a shoe at \$2 50, \$3.00 or \$3.50

### We'll Guarantee the Fit and the Wear

If every woman knew all about our shoes, we would sell all the women's shoes sold in the city of Santa Fe.



AMERICAN  
LADY  
LACE.

A SIZE  
and  
A WIDTH  
For  
Every Foot.

**Nathan Salmon**

Wholesale and Retail Dry Goods.

## WINTER GROCERY CO.

For

## Thanksgiving

TURKEYS ALIVE AND DRESSED

Chickens, Ducks, Geese, Oysters.

FRUITS AND VEGETABLES OF ALL KINDS IN SEASON

M. V. BUTTER A SPECIALTY

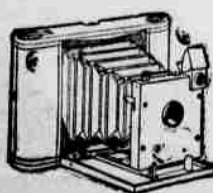
S. E. Corner Plaza, Santa Fe. Telephone No. 40.

## WARM TALK

If you want to keep warm this winter there is absolutely one way to do it and that is by calling at our store and buying one of those celebrated Estate Oak Heating Stoves. They are the best by test and we have the evidence of our numerous customers to prove it. The Estate Oaks are the best of their class, because of their extraordinary fire keeping qualities; they are the acme of perfection in construction and their immense popularity makes them the most rapid sellers; they keep fire from 50 to 60 hours. We have them in all sizes and the prices will surely be an incentive for you to buy these celebrated heaters.

## THE W. A. McKENZIE HARDWARE STORE

228 San Francisco St. : Telephone 14



**Kodaks and Photo Supplies**  
ART PICTURES AND FRAMING  
We make a specialty of DEVELOPING, PRINTING and ENLARGING. Mail Orders Given Prompt Attention. Send for Catalogue.  
**HOWLAND & CO.** 570 South Broadway, LOS ANGELES, CALIF.

## SOCIAL AND PERSONAL

M. R. Otero, register of the United States Land Office here, ate Thanksgiving turkey with his family in Albuquerque, returning to the Capital yesterday.

Governor M. A. Otero will leave this evening on belated train No. 2, for New York and Washington. He expects to be absent until New Years.

Public Printer James G. McNary, reached the city last evening from his home in East Las Vegas. He came over the range to attend to official business.

Elmer E. Veeder, Las Vegas attorney, has come to his old home in New York State for a visit with relatives and friends. He will be absent a month.

Surveyor General Morgan O. Llewellyn left yesterday for Las Cruces and other southern points on official business. He will be absent from the Capital City for a week.

Mrs. Henry Woodruff of 206 Don Gaspar Avenue, entertained a company of school teachers at her home this afternoon, and the occasion proved a very enjoyable one.

W. A. Bayer of Albuquerque, private secretary to Delegate W. H. Andrews, has left for Washington to be in the National Capital during the session of Congress, attending to his duties. He spent Thanksgiving day in this city.

W. H. Greer, president of the Albuquerque Traction Company, who has been East on financial business, is now in Los Angeles, California, but will return to New Mexico shortly.

Colonel George W. Prichard, who has spent the past week in Roswell attending to legal business before the district court for Chaves County there in session, returned home this evening.

Judge Henry L. Waldo, solicitor of the Santa Fe Railway in New Mexico with headquarters in East Las Vegas, went to Kansas City the fore part of the week to spend Thanksgiving. He will return to New Mexico shortly.

Attorney General W. C. Reid left yesterday via Trinidad and Clayton for Roswell to attend to legal business at the present term of the district court in Chaves County. He expects to be away ten days or two weeks.

Right Reverend Bishop J. B. Pitaval of this city returned to his work in Santa Fe yesterday, after several days in Albuquerque and Gallup, where he administered the sacrament of confirmation to large classes of children.

Right Reverend J. B. Kenrick of the Protestant Episcopal Church in New Mexico and Arizona, whose residence is at Phoenix, is on a visit to southeastern New Mexico. He is at Carlsbad and will hold services at Grace Church in that town tomorrow.

Mayor H. O. Bursum, of Socorro, has spent the past week in and about Corona, Lincoln County, shipping a large consignment of lambs and wethers which he has sold to eastern feeders. He expects to finish that work today and return to the Gem City tomorrow.

Covers were laid for sixteen at a Thanksgiving dinner, perfect in its appointments, on Thursday evening at the home of Mr. and Mrs. C. O. Luckenbach, 357 Palace Avenue. The guests were Mr. and Mrs. Paul A. F. Walter and children, Mr. and Mrs. Percy E. Knight and children and J. W. Dorman.

Judge Frank W. Parker, of the Third Judicial District Court, since adjourning court for Luna County at Deming, has been in Las Cruces with his family and spent Thanksgiving there. Tomorrow night he will go to Socorro to be present at the opening of the district court in the Gem City Monday next.

C. H. Ingraham, cashier of the United States Bank and Trust Company, who has been east at La Harpe, Illinois, his former home for the past three weeks on important business and on a visit to his wife and daughters has left that town for Santa Fe and is expected to reach here tomorrow or Monday.

Mr. and Mrs. W. N. Townsend entertained the Whist Club last evening at their residence on Palace Avenue. Delicious refreshments were served and prizes were closely contested for. Mrs. C. C. Closson carried off the first ladies' prize, and Will Farrel the gent's first prize. Mrs. James Read was awarded the ladies' consolation prize and John Hampel the gent's.

Governor Hagerman entertained at a formal dinner party Wednesday evening at the executive residence on Lincoln Avenue. The guests were: Lieutenant R. P. Rifenberk, Jr., aide de camp to Brigadier General Constant Williams, United States Army, commanding the department of Colorado; Territorial Secretary and Mrs. J. W. Reynolds and Hon. and Mrs. Arthur Seligman.

Thanksgiving week socially has been characterized by dinner parties in the Capital. One of these delightful events was given last night at the home of Hon. and Mrs. Arthur Seligman. The table was very prettily decorated, the flower scheme being carried out artistically. The guests were: ex-Governor M. A. Otero and Mrs. Otero, Territorial Secretary J. W. Reynolds and Mrs. Reynolds, and Mr. and Mrs. A. M. Berger.

J. F. McKelvey of Youngstown, Ohio, who has been spending several months in Santa Fe, left this morning



Baby won't cry if you give him BALLARD'S HOREHOUND SYRUP.

Pleasant to take, rapid results. Contains nothing injurious. CURES COUGHS, COLDS, CROUP, SORE THROAT, WHOOPING COUGH AND ALL PULMONARY DISEASES.

Mrs. J. C. Jenkins, Denver, Colo., writes: "I can't say enough for Ballard's Horehound Syrup. It has cured my baby of the croup and my children of severe Coughs. I know no better medicine."

25c, 50c and \$1.00  
Ballard Snow Liniment Co.  
ST. LOUIS, MO.

Sold and Recommended by  
FISCHER DRUG CO.

Millinery and Notions.  
Art Embroidery Materials,  
and Fancy Goods.

SOUTHEAST CORNER PLAZA.

MISS A. MUGLER

for his old home for the purpose of settling up an estate. From there he will go to Pittsburg, where he also has business interests. He expects to return to Santa Fe about the first of the year to spend the remainder of the winter prior to making his future home in California. Mr. McKelvey came here for his health and has been much benefited.

Hon. L. Bradford Prince returned Wednesday from Kansas City, Missouri, where he attended the Trans-Mississippi Commercial Congress as a delegate from New Mexico. En route home he visited Denver and Topeka, where he delivered a lecture of historical interest to New Mexico. Yesterday he went to Espanola for a short visit to the Prince Sunshine ranch and returned to this city this evening. He is preparing to go east at an early date to visit New York on important business.

By mistake I have received a very expensive piece of Net Drawn Work—a large table cloth. I intend to return it next Tuesday. In the meantime I would prefer to sell it, at cost. At Gold's Old Curiosity Shop.



HIGH SCHOOL HALL.  
Tuesday Night Dec. 4, 8 p. m.  
Reserved Seats at Fischer's Drug Store.

## LEGAL BLANKS.

CONFORMING TO THE LAWS OF NEW MEXICO.

The New Mexican Printing Company has the largest facilities and most modern machinery for doing all kinds of Printing and Binding in first-class style. Manufacturers of loose-leaf Ledgers, Pamphlets and Book Work a specialty. Best Book Bindery in the Southwest.

Warranty Deed, 1/2-sheet.  
Quit Claim Deed, 1/2-sheet.  
Bargain and Sale Deed, 1/2-sheet.  
Deed of Trust, full sheet.  
Release of Deed of Trust, 1/2-sheet.  
Capias Complaint, 1/2-sheet.  
Search Warrant, 1/2-sheet.  
Of Attorney and Non-Mineral Affidavit.  
School Blanks.  
Certificate of Appointment of School Funds, 1/2-sheet.  
Options, 1/2-sheet.  
Butcher's Bond, 1/2-sheet.  
"Minor Law" Cards for Posting, 25c each.  
Contrato de Pa lido, 1/2-pilego.  
Planza para Guardar la Paz, 1/2-pilego.

Teachers' Monthly Report, 1/4-sheet.  
320 Page J. P. Docket, 1/4 Civil, 1/4 Criminal \$4.00.  
480 Page hand-made Journal, \$5.75.

Size of Blank.  
Bond, General Form, 1/2-sheet.  
Bond of Indemnity, 1/2-sheet.  
Certificate of Marriage, 75c per dozen.  
Official Bond, 1/2-sheet.  
Official Bond, Road Supervisor, 1/2-sheet.  
Notice of Protest, 1/4-sheet.  
Notaries' Notice of Publication, 1/2-sheet.

Execution, 1/4-sheet.  
Summons, 1/4-sheet.  
Bond for Appearance, District Court, Justice Quarterly Report, 1/2-sheet.  
Bond for Deed, 1/2-sheet.  
Homestead Affidavit, 1/2-sheet.  
Homestead Application, 1/2-sheet.  
No. 1 Homestead, 4-348, 1/2-sheet.  
Desert Land Entry, 4-074e, 1/2-sheet.  
Chattel Mortgage, 1/2-sheet.

Letters of Guardianship, 1/2-sheet.  
Guardian's Bond and Oath, 1/2-sheet.  
Letters of Administration, 1/2-sheet.  
Administrator's Bond and Oath, 1/2-sheet.  
Declaration in Assumpsit, 1/2-sheet.  
Letters Testamentary, 1/2-sheet.  
Declaration in Assumpsit on Note, 1/2-sheet.

Subpoena, 1/4-sheet.  
Satisfaction of Mortgage, 1/2-sheet.  
Assignment of Mortgage, 1/2-sheet.  
25 Blanks, 40c per Book.  
Bill of Sale, Animals not Bearing Vendor's Recorded Brand, 1/2-sheet.  
Warrant to Appraisers, full sheet.  
Bill of Sale, Range Delivery, 1/4-sheet.

Justice of the Peace Blanks.  
Appeal Bonds, 1/2-sheet.  
Appeal Bonds, Criminal, 1/2-sheet.  
Appearance Bond, 1/2-sheet.  
Appearance Bond, on Continuance, 1/2-sheet.

Attachment Writ, 1/4-sheet.  
Attachment Summons as Garnishee, 1/4-sheet.

Notary Record, \$1.25 each.  
Notary Seals—Aluminum pocket, \$2.75 delivered. Desk, \$3.25, delivered to nearest express office.  
Compilation Corporation Laws, 75c.  
Compilation Mining Laws, 50c.  
240 Page J. P. Civil Docket, \$2.75.  
240 Page J. P. Criminal Docket, \$2.75.

Animals not Bearing Owner's Recorded Brand, 1/2-sheet.  
Certificate of Brand, 1/2-sheet.  
Special Ruling Work our Specialty.  
Our Blank Books speak for them.  
1/2-sheet, 7x8 1/2 inches.  
1/2-sheet, 8 1/2 x 14 inches.  
Full sheet, 14x17 inches.  
Promissory Notes, 25c per pad.  
Foreclosure, or Publishing Out Notice Planza Oficial, 1/2-pilego.

Formula de Enumeracion, 1/2-pilego.  
Contrato Entre los Directores y Preceptores, 1/2-pilego.  
Contrato de Combustible, 1/2-pilego.  
Notas—Obligaciones, 25c por 50.  
Libros—Certificados de Bonos, \$1.  
Libros de Recibos, Supervisores de Caminos, 75c.  
Hipoteca de Bienes Muebles, 1/2-pilego.  
Documento de Hipoteca, 1/2-pilego.  
Documento Garantizado, extensa forma entera.

Certificado de Matrimonio, 10c.  
Proof of Labor, 1/2-sheet.  
Lode Mining Location, 1/2-sheet.  
Placer Mining Location, 1/2-sheet.  
Title Bond to Mining Property, 1/2-sheet.  
Title Bond and Lease of Mining Property, 1/2-sheet.  
Mining Deed, 1/2-sheet.  
Mining Lease, 1/2-sheet.  
Coal Declaratory Statement, 1/2-sheet.  
Coal Declaratory Statement with Power Agreement, 1/2-sheet.

Application for License, Retail Liquor Dealers, 1/2-sheet.  
Application for License, Games and District Clerk's Annual Report, 1/2-sheet.

Contract for School Teacher, 1/2-sheet.  
Enumeration Form, 1/2-sheet.  
Teacher's Certificate, 1/2-sheet.  
Certificate of Appointment, 1/2-sheet.  
Missouri Code Pleading, \$8.

The two for \$10.  
Adapted to New Mexico Code.  
Probate Clerk and Recorder, 1/2-sheet vit, 1/2-sheet.  
Notice of Right-of-Way, 1/2-sheet.  
Teachers' Term Register, full sheet.  
Contract for Fuel, 1/2-sheet.  
180 Page hand-made Ledger, \$6.50.  
Gambling Table, 1/2-sheet.  
Application for License, 1/2-sheet.  
Sheriff's Monthly Report, 1/2-sheet.

General Blanks.  
Township Plats, 1/2-sheet.  
Authority to Gather, Drive and Handle Authority to Gather, Drive and Handle Animals Bearing Owner's Recorded Brand, 1/2-sheet.  
Notice to Assessor by Probate Clerk, 1/2-sheet.

Lease, 1/2-sheet.  
Lease of Personal Property, 1/2-sheet.  
Acknowledgment, 1/2-sheet.  
Mortgage Deed, 1/2-sheet.  
Power of Attorney, 1/2-sheet.  
Bond to Keep the Peace, 1/2-sheet.  
Complaint, Criminal, 1/2-sheet.

Forcible Entry and Detainer, Complaint, 1/2-sheet.  
Forcible Entry and Detainer, Summons, 1/2-sheet.  
Replevin Bond, 1/2-sheet.  
Execution—Forcible Entry and Detainer, 1/2-sheet.  
Replevin Writ, 1/2-sheet.  
Replevin Affidavit, 1/2-sheet.  
Peace Proceedings, Complaint, 1/2-sheet.  
Warrant, 1/2-sheet.

Commitment, 1/2-sheet.  
Sheep Contract, 1/2-sheet.  
Affidavit Required of Claimant, 4-069.  
Non-Mineral Affidavit, 1/2-sheet.  
Homestead Proof, full sheet.

Prices.  
On 1/4 or 1/2-sheets, each.....\$ .05  
Full sheet, each......1  
1/4-sheets, per dozen......2  
1/2-sheets, per dozen......3  
Full sheets, per dozen......6  
1/4-sheets, per hundred.....1.75  
1/2-sheets, per hundred.....2.50  
Full sheets, per hundred.....4.00  
100 assorted blanks take the per 100 price.

On an order of 500 blanks, customer business card will be printed under all ing without extra cost.  
Oath of School Director, 1/4-sheet.

## SELIGMAN BROS. CO.

For Half a Century the Leading Dry Goods House in the City.

### Thanksgiving Greeting:

### To You "Who's Who:"

AS ONE OF OUR THOUSANDS OF FRIENDS AND CUSTOMERS, WE EXTEND A SINCERE AND HEARTY THANKSGIVING.

WE DEEPLY APPRECIATE THE EVER-INCREASING VOLUME OF PATRONAGE, CONFIDENCE AND ENCOURAGEMENT FROM OUR PATRONS.

WE HAVE SOME EXCELLENT BARGAINS IN ALL DEPARTMENTS. CALL AND SEE THEM NOW BEFORE THEY ARE ALL GONE.

## SELIGMAN BROS. CO.

Wholesale and Retail

DRY GOODS.

P. O. Box 419.

Phone 36.

## CHARLES WAGNER Furniture Company.

New shipment of Furniture and Stoves just in.



EMBALMING AND UNDERTAKING A SPECIALTY.

306-S San Francisco St. Phone 10.  
Night Call Phone No. 1.

## H. S. KAUNE & COMPANY

Phone 26.

GOOD THINGS TO EAT.

Phone 26

We now have all necessary ingredients for your Thanksgiving Fruit Cake, such as

New Raisins, Lemon Peel,  
Currants, Orange Peel,  
Citron, New English Walnuts,  
Almonds, Etc.

Give us your order for your Thanksgiving Turkey now. Then your choice will be selected for you. Naval Oranges for Thanksgiving.

We Guarantee Price and Quality.

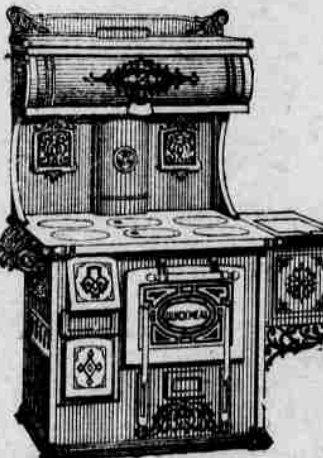
EXTRA FANCY CELERY-FRESH BALTIMORE OYSTERS

## CUT PRICES!

CUT PRICES.

We have a quantity of first class furniture, stoves and ranges that we are going to close out in the next thirty days at great bargains. Now is the time to fit up your house when you can get the best goods at the lowest prices. We will furnish your house from kitchen to garret. You can pay cash and get a discount or we will give you all the time you want on easy payments. Call in and see our goods.

D. S. LOWITZKI,  
Lower San Francisco St., Santa Fe.



INCORPORATED

## H. B. CARTWRIGHT & BRO., WHOLESALE GROCERS

Grain, Flour and Potatoes, Stationery. Patent Medicine and Grocers' Sundries.

PROMPT ATTENTION GIVEN MAIL ORDERS.

SANTA FE, N. M.

LEVI A. HUGHES. FRANCISCO DELGADO.

HUGHES & DELGADO.

Insurance and Real Estate

We have some choice property for the person with small capital and also rare bargains for the wealthy. Let us show you our list of property. Office West Side of Plaza, Santa Fe N. M.

# CARL A. BISHOP & CO., Railroad Ticket Brokers. Laughlin Block.

INSURANCE.

SURETY BONDS.



## MINOR CITY TOPICS

Don't fail to hear the Royal Male Quartet Tuesday night at the High School Hall.

A. Menett, East Las Vegas traveling man, interview Santa Fe merchants today.

The receipts of the local postoffice for last month broke all November records. The stamp sales amounted to \$1,069.18.

Forest Guard Thomas R. Stewart on the Pecos Reserve attended to official business here today. He had a room at the Coronado.

J. P. Goodlander, St. Louis traveling man, paid this city one of his periodical business trips today. He was registered at the Claire.

J. M. Sandoval of Sandoval County was an arrival yesterday from the south. He came to town to visit relatives and to attend to personal business.

A special meeting of the county commissioners will be held on Wednesday, December 5. It has been called for the purpose of issuing the

proclamation for the election of justices of the peace in January.

R. L. Baca, member-elect to the House of Representatives from the Ninth Representative District, returned yesterday after a few days' visit to Torrance County. His trip to that section was on land business.

There will be a special convocation of Santa Fe Chapter No. 1, Royal Arch Masons at 7:30 o'clock this evening at Masonic Hall. Work in the P. M. and M. E. N. degrees. Visiting companions are cordially invited to be present.

Santa Fe Lodge No. 460, B. P. Order of Elks, will hold memorial services at its lodge rooms in the Kahn block on the south side of the Plaza Sunday evening at 8 o'clock. The services will be public and all interested are invited to be present.

The New Mexican Printing Company is fully prepared to turn out records and briefs for attorneys for the approaching session of the Territorial Supreme Court which meets here January 9th next. First class work, lowest possible prices and satisfaction guaranteed.

Milner Rudolph of Tucumcari, superintendent of schools of Quay

# LADIES

It's nearly time to look for Christmas presents so bear in mind we have the latest and best assortment in

## Men's Bath and Lounging Robes

**\$3.50 to \$15.00.**

## Men's Smoking Jackets

**\$5.00 to \$10.00**

## Fancy Vests.

**\$1.35 to \$3.50**

**Gloves, H'kerchiefs, Mufflers, Ties, Hosiery, Hats, Caps, Ready-Made Clothing, Overcoats, Raincoats, Etc.**

## Suits and Overcoats to Order.

Everything that's Up-to-Date.

# Santa Fe Haberdashery.

EDWARD EHLE.

# Wilson Heaters

For Coal or Wood



Ask your neighbors who are using the Wilson. They will tell you its the best they ever had, because they use less fuel, retain fire longer, less trouble, perfectly safe, and out last other stoves. Economy, the basis of our guarantee.

## Turquoise Enameled Ware

Three coats of Enamel on steel, outside blue, inside white, made in Germany. These utensils for kitchen are superior in quality. Excelled by none.

## THANKSGIVING

Will soon be here. We can supply you with Dinner Sets—China or Porcelain. "Liaks Celebrated Roasters." We have exclusive sale on these goods. Self basting. Ask to see them. Carving Sets—New designs in Cut Glass handles. Rogers Celebrated Silverware.

## Horse Wear

We have stable and outdoor Blankets, also Laprobes of different qualities.

## Harness and Saddlery

We have a large stock on hand, and can supply your wants.

## Window Glass, Paints, Oils and Wall Paper.

## FOR BARGAINS VISIT US.



# LEO HERSCH . . .

## FLOUR, HAY, GRAIN, POTATOES, SALT and SEEDS.

THE ONLY EXCLUSIVE GRAIN HO USE IN SANTA FE, NEW MEXICO.

## WE COUNT YOUR GOOD WILL,

much the largest asset we have in our business. To have our customers say to their friends, "Every statement made by S. Spitz can be relied upon" is the very best recommendation we can strive for. Reliability is our watchword and every sale we make is closed only after the purchase proves entirely satisfactory. It is a great satisfaction to buy at a store like this. Every article carries with it our guarantee.

## S. SPITZ, Manufacturing Jeweler, Dealer in Watches, Jewelry, Diamonds.

## JACOB WELTMER

Complete Stock of

## SCHOOL SUPPLIES.

Authorized School Books on Hand  
Used in Public Schools.

## JUST RECEIVED

A large sample line of Carpets, Rugs and Linoleums. We take measures of rooms and halls and do the laying. All of these goods are sold at Eastern prices. No charge for freight.

Please Call and Examine Them.

## A. ADOLPH SELIGMAN.

## New Jewelry Catalog No. 49



BEAUTIFUL CHRISTMAS EDITION  
80 pages, 2,000 Illustrations. Diamonds, Watches, Jewelry, Silverware. The newest styles. The buying advantages of our three large stores mean a saving for you. The suggestions in this Catalog will make your Christmas shopping easy.



Write for it Today

No. 72, \$3.00

## BROCK & FEAGANS

JEWELERS

Broadway and Fourth St.

Los Angeles, California

No. 73, \$26.00  
14K Solid Gold  
Hunting Case. 15-Jeweled  
Elgin or Waltham Movement

14K Solid Gold Brooch  
or Chatelaine Pin. Very  
Heavy. Exquisitely  
Carved. Rose Finish.

## WHAT HAVE YOU TO BE THANKFUL FOR?

Are you better off than you were a year ago?  
Are you going ahead or falling behind?  
Do you make each day count?  
Your whole life will be a great big success if you make each day of it a small success.  
Manage to save a part of your earnings each day.  
Open an account with us where you can keep these savings absolutely safe.



## THE NORMANDIE HOTEL.

First-Class in Every Respect.

EUROPEAN PLAN.

Corner Don Gaspar Avenue and Water St.

IN CONNECTION WITH

## Bon Ton Restaurant

BEST MEALS IN THE CITY.

Short Order  
Life . . . John V. Conway.

## LIVERY STABLE

FINE RIGS, RELIABLE HORSES, SINGLE BUGGIES, SURRIES, HACKS.

CALL UP 'PHONE NO. 9

When in Need of Anything in the Livery Line. Drivers Furnished. Rates Right.

## CHAS. CLOSSON.

## The Largest Stock of

## RUGS

Ever Shown in Santa Fe at the



JULIUS H. GERDES.

County, and son are in town, guests at the Claire. Mr. Rudolph has served in that position creditably since the organization of Quay County and was re-elected November 16th last on the Republican ticket. While here Mr. Rudolph entered his son as a pupil at St. Michael's College.

Royal Male Quartet at the High School, Tuesday night, 8 o'clock. Tickets 50c and 35c. Reserved seats on sale at Fischer's Drug Store.

Ignacio Garcia, who was arrested on a charge of wife beating, was arraigned yesterday afternoon before Justice of the Peace Jose Ma. Garcia. He was bound over in the sum of \$300 to await the action of the next grand jury, and placed under a bond of \$200 more to keep the peace.

The following shows have been booked for December at the local opera house by Manager A. M. Dettelbach: "King of Tramps," December 15; "A Royal Slave," December 22; "Hooligan's Troubles," December 28. No theatrical attraction has so far been secured for Christmas day.

Attorney Charles F. Easley, grand junior warden of the grand lodge of Masons, officiated yesterday afternoon at the funeral of the late Richard Green, who was a charter member and a past master of Cerrillos Lodge, No. 19, A. F. and A. Masons. The remains were laid to rest with Masonic rites in the cemetery at Cerrillos.

Mounted Policeman Richard Huber has returned to Santa Fe, after two weeks spent in Torrance, Lincoln and Chaves counties on police business. He was out in the blizzard which swept that portion of New Mexico and said it was the most severe snow storm he had ever experienced. The officer said it was very cold in Chaves County.

D. C. Washburn, electrical engineer, of Racine, Wisconsin, who spent two weeks in this city with his wife the latter returning a week ago to Racine on account of the illness of her mother, has returned to his Wisconsin home and will be back in New Mexico just as soon as his mother recovers from a severe case of illness. He intends to bring his wife and make the west their future home.

WANTED—Good white miners. Wages \$3 per day. Good board and room \$1. Apply to J. J. May, Manager, Hillsboro, N. M.

New Mexican advertisers get trade.

## THE NEW MEXICO COLLEGE OF AGRICULTURE AND MECHANIC ARTS.

An institution giving an intensely practical education. Supported by Federal and Territorial appropriations. Pleasantly situated in its own grounds of 400 acres in the beautiful Mesilla Valley.

Four full 4-year college courses in agriculture, mechanic arts, domestic science and general science; short courses in agriculture, stenography, and assaying. \$90,000 worth of equipment. A faculty of 30 instructors; 230 students now in attendance. Military instruction by an officer of the U. S. Army. Large parade and athletic grounds. Commodious girls' dormitory, under the best management. An ideal winter climate at an altitude of 3,800 feet.

LUTHER FOSTER, President  
(P. O.) Agricultural College, N. M.

## It Is Much Cheaper

A good deal quicker and much more satisfactory to use the telephone instead of the telegraph. Use the long distance telephone when you have business with people in Denver, Colorado Springs, Pueblo, Trinidad, Raton, Las Vegas, Cerrillos Bernalillo, Albuquerque, Los Lunas, Belen and Socorro. The Santa Fe Telephone Company's instruments connect with these places. Terms more reasonable than the telegraph.

I. SPARKS, Manager.

Don't forget our large and complete bindery and job department. All work handled promptly and in the most up-to-date manner. One trial makes you a permanent patron.

The New Mexican Printing Company is prepared to do the best of brief work in short order and at very reasonable rates. Lawyers, who desire to have their briefs printed rapidly and correctly and to present them to the Supreme Court now in session here on time, should call on the New Mexican Printing Company and leave their orders.

## The Plomteaux Boarding House.

114 Cerrillos Road.  
Just Beyond the Capitol Building

Board and room \$25 per month. Rooms furnished completely and always kept clean. Carpets on floors. Board as good as can be had for the price. Wood furnished. Satisfaction guaranteed. On road to Indian School which road is the best in town. Your patronage solicited.

Mrs. Bratlia Plomteaux,  
Phone 100 Proprietor.

## FOR THE HOLIDAYS.

The Santa Fe Filigree and Jewelry Manufacturing Company.

A fine and extensive assortment of the latest styles of jewelry has just been purchased and will be sold at the lowest possible rate for first class goods. Every article guaranteed as genuine and as represented. The manufacture of Mexican filigree jewelry is a specialty—the finest and best work in that line is turned out by this company at very reasonable rates. Brooches, bracelets, rings, lockets, hairpins, scarf pins, ladies' breast pins, in gold or silver, filigree work manufactured at home and in the shops of the company by special design and to suit customers in short order and from the finest gold.

Souvenir spoons, including gold and silver Church stamps, in great numbers and at a low price. Store and factory 208 Don Gaspar Avenue, Laughlin building.

N. MONDRAGON, Mgr.

## JUSTICE OF THE PEACE DOCKETS.

The New Mexican Printing Company has prepared civil and criminal dockets especially for the use of justices of the peace. They are especially ruled, with printed headings, in either Spanish or English, made of good record paper, strongly and durably bound with leather back and covers and canvases, slides, have full index in front and the fees of justices of the peace and constables printed in full on the first page. The pages are 10½x6 inches. These books are made up in civil and criminal dockets, separate of 32 pages each, or with both civil and criminal bound in one book, 80 pages civil and 320 pages criminal. To introduce them they are offered at the following low prices:

Civil or criminal . . . . . \$2.75  
Combined civil and criminal . . . \$4.00  
For 45 cents additional for a single docket, or 55 cents additional for a combination docket, they will be sent by mail or prepaid express. Cash in full must accompany order. State plainly whether English or Spanish printed heading is wanted. Address  
NEW MEXICAN PRINTING CO.

The New Mexican Printing Company is prepared to fill promptly and satisfactorily all orders for engraved visiting cards, marriage announcements, invitations and all work of that kind. Prices as low as compatible with good work. Call at the New Mexican office and examine samples and prices.

## D. & R. G. SYSTEM Santa Fe Branch.

Effective December 10th, 1905.

RAST BOUND		WEST BOUND	
No. 425, MILES	Stations	No. 425	
11:00 a. . . . .	0. . . . . Santa Fe . . . . .	3:30 p.	
11:21 p. . . . .	34. . . . . Espanola . . . . .	1:25 p.	
11:41 p. . . . .	53. . . . . Embudo . . . . .	12:25 p.	
12:01 p. . . . .	61. . . . . Barranca . . . . .	11:30 a.	
12:21 p. . . . .	81. . . . . Servilleta . . . . .	10:25 p.	
12:41 p. . . . .	91. . . . . . . . . . .	9:30 a.	
1:01 p. . . . .	105. . . . . . . . . . .	8:30 a.	
1:21 p. . . . .	127. . . . . . . . . . .	7:30 a.	
1:41 p. . . . .	133. . . . . . . . . . .	6:30 p.	
2:01 p. . . . .	153. . . . . . . . . . .	5:30 p.	
2:21 p. . . . .	187. . . . . . . . . . .	4:30 p.	
2:41 p. . . . .	205. . . . . . . . . . .	3:30 p.	
3:01 p. . . . .	225. . . . . . . . . . .	2:30 p.	
3:21 p. . . . .	245. . . . . . . . . . .	1:30 p.	
3:41 p. . . . .	265. . . . . . . . . . .	12:30 p.	
4:01 p. . . . .	285. . . . . . . . . . .	11:30 a.	
4:21 p. . . . .	305. . . . . . . . . . .	10:30 a.	
4:41 p. . . . .	325. . . . . . . . . . .	9:30 a.	
5:01 p. . . . .	345. . . . . . . . . . .	8:30 a.	
5:21 p. . . . .	365. . . . . . . . . . .	7:30 p.	

Trains stop at Embudo for a dinner hour when good meals are served.

At Embudo for Durango, Silverton and Alamosa.

At Alamosa for Denver, Pueblo and Intermediate points via the standard gauge line, via La Veta Pass or the narrow gauge via Salida, making the entire trip in daylight and passing through the FAMOUS ROYAL GORGE.

Also for all points on Creeds branch.

S. K. HOOPER,  
G. P. A., Denver, Colo.



## DENVER & RIO GRANDE SYSTEM

"Scenic Line of the World."

### SHORTEST AND QUICKEST LINE

TO  
DENVER, PUEBLO AND COLORADO SPRINGS  
AND ALL COLORADO POINTS

Connection at Denver with all lines East and West.  
Time as Quick and Rates as Low as Other Lines.

PULLMAN SLEEPERS, DINING CARS, TOURIST  
CARS, AND CHAIR CARS, on all Through Trains.  
No Tiresome Delays at Any Station.

For Illustrated Advertising Matter or Information Address:  
S. K. HOOPER, G. P. and T. A., DENVER, COLORADO, or  
A. S. BARNEY, T. P. A., SANTA FE, NEW MEXICO.

## EL PASO ROUTE



This handsome solid vestibuled train runs through to New Orleans, Shreveport and St. Louis without change. Carries through sleepers Los Angeles to Chicago and intermediate points. Direct connections made for all points North, East and Southeast.

TAKE THE NIGHT EXPRESS. FAST TRAIN.

NEW TRAIN SCHEDULE EQUIPMENT NEW

Leaves El Paso at 6:50 p. m. Mountain Time

For schedules, rates and other information, call on or address,

R. W. CURTIS,  
Southwestern Passenger Agent,  
EL PASO, TEX.

Traveling Passenger Agent,  
El Paso, Texas.

E. P. TURNER,  
Gen. Passenger Agent,  
Dallas, Texas.

## Santa Fe Central Railway System

SUNSHINE ROUTE, VIA TORRANCE GATEWAY.

FAST PASSENGER AND FREIGHT SERVICE. STEAMSHIP TICKETS  
TO ALL PARTS OF THE WORLD



Connections at Torrance, New Mexico, with El Paso & Southwestern and Chicago, Rock Island & Pacific Railways. At Kennedy and Santa Fe New Mexico, with the Atchafalaya, Topeka & Santa Fe Railway. At Santa Fe, with the Denver & Rio Grande Railroad.

Special attention given to handling of passengers and freight.  
Route your freight via the Chicago, Rock Island & Pacific Railway, at Torrance, New Mexico.  
Your business respectfully solicited

W. H. ANDREWS,  
Pres. and Gen. Mgr.

FRANK DIBERT,  
Asst. Sec'y and Treas.

A. P. LYNG,  
City Freight and Pass. Agt.  
General Office, Santa Fe, New Mexico.

A. B. GRIMSHAW,  
Asst. to Pres. and Gen. Mgr.

A. L. GRIMSHAW,  
Trav. Freight and Pass. Agt.

A. L. GRIMSHAW,  
Trav. Freight and Pass. Agt.  
General Office, Santa Fe, New Mexico.

### PROFESSIONAL CARDS

#### ATTORNEYS-AT-LAW.

MAX. FROST,  
Attorney at law.  
Santa Fe - - - - - New Mexico

H. B. HOLT,  
Attorney-at-Law.  
Las Cruces, - - - - - New Mexico.  
Practices in the district courts as well as before the Supreme Court of the Territory.

RICHARD H. HANNA,  
Attorney at Law.  
Phone 66. Office, Griffin Bldg.

G. W. PRICHARD,  
Attorney and Counselor at Law.  
Practices in all the District Courts and gives special attention to cases before the Territorial Supreme Court Office, Laughlin Bldg., Santa Fe, N. M.

BENJAMIN M. READ,  
Attorney at law.  
Santa Fe, - - - - - New Mexico.  
Office, Sans Bldg. Palace Ave.

CHAS. A. LAW,  
Attorney-at-Law.  
U. S. Land Office Practice, a Specialty Clayton, - - - - - New Mexico

WILLIAM H. H. LLEWELLYN,  
Attorney at law.  
Las Cruces, New Mexico.  
United States District Attorney.

A. W. POLLARD,  
Attorney at law.  
District Attorney, Luna County. Deming - - - - - New Mexico

J. H. BOABHAM, E. C. WADE  
BONHAM & WADE,  
Attorneys at Law.  
Practice in the Supreme and District Courts of the Territory, in the Probate Courts and before the U. S. Surveyor General and U. S. Land Offices. Las Cruces, N. M.

E. C. ABBOTT,  
Attorney at law.  
Practices in the District and Supreme Courts. Prompt and careful attention given to all business. Santa Fe - - - - - New Mexico

A. B. RENEHAN,  
Practices in the Supreme and District Courts; Mining and Land Law a Specialty. Rooms 4-9 Sans Bldg. Palace Ave., Santa Fe, N. M.

CHAS. F. EASLEY,  
(Late Surveyor General)  
Attorney at law.  
Santa Fe - - - - - New Mexico.  
Land and Mining Business a Specialty.

FRANK W. CLANCY,  
Attorney at law.  
District Attorney for Second Judicial District.  
Practices in the District Court and the Supreme Court of the Territory also before the United States Supreme Court in Washington. Albuquerque, New Mexico.

#### OSTEOPATHY.

DR. CHARLES A. WHEELON,  
Osteopath.  
No. 103 Palace Ave.  
Successfully treats acute and chronic diseases without drugs or medicines. No charge for Consultation. Hours: 9-12 m., 2-5 p. m. Phone 154

#### MINING ENGINEERS.

CONY T. BROWN,  
Mining Engineer.  
Secretary and Treasurer New Mexico School of Mines. Socorro, - - - - - New Mexico

#### CIVIL ENGINEERS AND SURVEYORS

CORBET & SMYTHE,  
Civil, Mining and Hydraulic Engineers.  
Assaying and General Contracting. U. S. Deputy Mineral Surveyor. East side Plaza... Santa Fe, N. M.

HIRAM T. BROWN,  
CIVIL ENGINEER AND SURVEYOR  
U. S. Mineral Surveyor  
Santa Fe, - - - - - New Mexico

#### NOTARY PUBLICS.

JOHN K. STAUFFER,  
Notary Public.  
Office with the New Mexican Printing Co., Santa Fe, New Mexico.

#### REAL ESTATE AND MINES.

ROMAN L. BACA,  
Real Estate and Mines.  
Spanish Translator, Notary Public Office Griffin building, Washington Avenue, Santa Fe, N. M.

Subscribe for the Daily New Mexican and get the news.

## Growing Girls

Growing girls need care, advice and medicine, especially on reaching the age of puberty. A mother's tender care and words of caution will often accomplish wonders. As for medicine, a gentle, safe and reliable strengthening tonic is Wine of Cardui.

It will prevent and relieve pain, regulate the functions, clear the complexion and strengthen the constitution.

It is a valuable medicine for growing girls. It has tided thousands over a critical period, and saved them from years of suffering. It can never do harm and is sure to do good.

A relief or cure for all female disorders in girls and women.

At every druggist's in \$1.00 bottles. Try it.

WINE OF CARDUI

### HOTEL ARRIVALS.

#### Palace.

F. W. McNamara, Chicago; H. E. Greene, Denver; Mrs. Thomas S. Saher, Montclair, New York; A. Menet, Sr., Las Vegas; F. H. Kueck, New York; H. C. Nelfar, Denver; C. L. Jones, Pueblo; James G. Caldwell, Jr., St. Louis; C. R. Harper, Denver; C. C. Styer, Philadelphia.

#### Claire.

J. P. Goodlander, St. Louis; W. S. Hopewell, Albuquerque; Laz Noble, Indianapolis; A. G. Harrison and family, Albuquerque; S. C. Hall, Trinidad; George S. Ranney, Albuquerque; A. Judell, Kansas City; Milnor Rudolph and son, Tucuman; Miss Sullivan, James G. McNary, Las Vegas.

#### Normandie.

C. S. Adamson, Washington, D. C.; John Williams, Thomas Burke, Las Vegas; Charles Hill, Phoenix; Mr. and Mrs. John S. Kinley, Alamosa; Mrs. J. O. Adams, Pueblo; George Shadle, Silverton; E. B. McArthur, Orville Irwin, Denver; Antonio Sedigos, La Junta.

#### Coronado.

Thomas R. Stewart, Pecos; W. A. Walker, Vernon, Texas; H. S. Manning, Estancia; D. W. Lyon, A. W. Verney, Quincy, Illinois; J. A. Varney, Paris, Missouri.

#### TEN MEN UNDER BOND TO KEEP PEACE.

Albuquerque, N. M., Dec. 1.—Judge Ira A. Abbott was recently called upon to consider the cases of ten men under bond to keep the peace. All wanted to be released. After hearing each case separately, Judge Abbott granted the requests of eight out of the ten men.

#### CHRISTMAS AND NEW YEAR RATES SANTA FE CENTRAL.

During the 1906-07 Christmas and holiday season, the Santa Fe Central has instructed its agents to sell round trip excursion tickets under the following conditions: Tickets for round trip between points on the Santa Fe Central may be sold by the agents at the rate of one regular first class fare between December 22 and December 31, 1906, and on January 1, 1907. The tickets so sold shall be good for continuous passage in each direction, the start to be made on the day the ticket is sold. Tickets will be good for return until and on January 4.

**The American Collection Agency.**  
No fee charged unless collect on loan made. We make collections in all parts of the U. S.  
ANTHONY P. WILSON, Attorney.  
413 Kansas Avenue, TOPEKA, - - - - - KANSAS.

**Santa Fe**  
Go Santa Fe To Chicago.

In that way you'll learn just how good its service is. There is no other way. You'll find modern equipment—Chair cars and Pullmans; and Harvey meals. Several trains to choose from. A low rate will be made from December 1st to 4th inclusive, final return limit December 10th. \$41.30, to be exact. Why not make your trip then? International Live Stock Exposition, December 1-8. G. H. DONART, Agent, Santa Fe, N. M.

**Santa Fe**  
**THE MESSAGE FROM HOME**

Is more apt to strike a responsive chord at this season than at any other. That's probably because you've had a prosperous season and your thoughts are with your folks and former friends "back east" or "up north," and there is yearning to visit them and again see the old familiar places. If you've an attack of "homesickness"—(it's not a serious malady, but it ought to be humored)—write me at once for particulars of our Home Visitors' Excursions to be run October 23 and November 13 and 27. Home Visitors Excursions to Illinois, Iowa, Minnesota, Nebraska, Wisconsin, North and South Dakota and Missouri. Via the Santa Fe. One and one-third fare for round trip. Minimum, \$10. On sale October 23 and November 13 and 27. Thirty days' limit. G. H. DONART, Agent. The Atchafalaya Topeka & Santa Fe Ry., Santa Fe, New Mexico.

The New Mexican can do printing equal to that done in any of the large cities. Our solicitor: Every piece of work we turn out. Try our work once and you will certainly come again. We have all the facilities for turning out every class of work, including one of the best binderies in the west.

#### A DELICIOUS BEVERAGE.

Dr. Lauritzen's Health Table Malt, is a most delicious beverage. It may be drunk freely at any time, by man, woman or child. It builds up tired, weak bodies and shattered nerves.

H. S. KAUNE & CO.

Phone 28.

New Mexican advertisers get trade. CITY BOTTLING WORKS, Phone 38.

THE New Mexican Printing Company has the best bookbinding in the Southwest and the only modern bindery in New Mexico. It turns out superior blank-books, cash-books, journals and ledgers, and also loose-leaf ledgers and blank-books of all descriptions. The work done by it is first-class and at very low rates. Bankers and merchants in New Mexico should not send their book binding work out of the territory, but should patronize this very deserving home manufacturing institution.

The Job Department of this Company is the most completely furnished in the Southwest carrying all the latest faces of type. Any job, from a business card to a thousand-page book, can be turned out with equal first-class workmanship. This department can not but meet the demands of the most fastidious, and should receive the support of every businessman in New Mexico. The privilege of a bid is earnestly solicited.

## New Mexico Employment Bureau AND REALTY COMPANY.

Morton C. Miller, Secretary and Manager.

Situations of all kinds Secured, Real Estate Bought, Sold and Exchanged. Money Lent on Approved Security.

RENTS COLLECTED AND TAXES PAID.

Business of Non-Residents Attended to.

FOR SALE AT A BARGAIN:  
A Nice 7-Room House. Large Lot. Good Location. Plenty of Fruit Trees.

103 Palace Avenue.

Phone No. 154.

## Kentucky Saloon.

J. BERARDINELLI & CO., Proprietors.

261 San Francisco St. - - - - - Santa Fe, New Mexico.  
Only the finest of imported wines and cordials served to customers—the best of whiskies and brandies, do mestico and imported, a specialty. Superior brands of cigars.

## A. F. Spiegelberg.

407 San Francisco Street.

### Indian and Mexican Wares and Curios

Blankets, Baskets, Rag, Wax, Pottery and Linen Brown Work, Opals, Turquoise, Garnets and Other Gems.

OUR MOTTO: To Have the Best of Everything in Our Line.

## Roswell Automobile Co.

Mail and Passenger Line between Island train due at 2 a. m. Roswell, N. M., and Torrance, N. M., Running time between the two daily Sunday included, connection points 5 hours, meals furnished at all trains on the Rock Island Camp Needmore, free of charge, and Santa Fe Central Railways. Excursion parties accommodated by Leave Roswell at 1 p. m. notifying the company two days in Leave Torrance on arrival of Rock advance.

AGENTS FOR THE BUICK AND POPE TOLEDO AUTOMOBILES.

Two of the best known and best machines for all purposes on the Address all communications and inquiries to the

## Roswell Automobile Co.

Roswell, - - - - - New Mexico.

### REMINGTON

#### TYPEWRITERS

NEW MEXICAN PRINTING CO

Dealers,

- Santa Fe, N. M.



—The—  
NEW MEXICAN  
—Daily—  
SHORT STORY

Specially Selected From Among Best  
Short Story Writers of the Day.  
All Are Bright, Catchy and  
Entertaining.

## A Change of Mind.

BY WILLIAM H. HAMMER.

(Copyright, 1906, by Daily Story Pub. Co.)  
He had come home to America with  
hated and revenge in his heart—  
hated for the woman who had only  
ceased to love him when he trampled  
her love, as everything else, under  
foot; revenge for the years through  
which she had gone on calmly believ-  
ing him dead, as did the rest of the  
world, and never dreaming of seeing  
his face again. Why revenge should  
be uppermost in his mind he knew  
not. He hated the beautiful, fair  
woman who had been his wife; he  
would be revenged on her for the  
short time of happiness after the  
storm and stress of that terrible four  
years that he mockingly called "their  
married life."

She had despised him for his mean-  
ness, he read it in her face; she had  
scorned him for his evil temper and  
his intemperance—the seven devils  
that were always haunting, haunting  
him, and goading him into fresh ex-  
cesses and deeper depths.

Yet she had tried her best, her  
hardest. She had stood for him  
against his tempters with only the  
fervent strength that a loving woman  
can exert. She had only given up the  
struggle with his flight from her and  
her "preaching ways," as he said.

But he had not died after all. He  
was alive and fairly well off to-day,  
and he was journeying to New York  
to confront her, to revenge himself for  
the three years during which she had  
sailed her bark in calmer waters and  
under happier skies than hereto-  
fore.

He had planned it all out very care-  
fully, living very abstemiously until  
his purpose was achieved, in order to  
bring it about the better. Why  
should she be happy when he had  
been miserable all these three long  
years? He had been miserable dur-  
ing their married life, save for the  
few brilliant days—yet she had  
learned his secrets—he had been far  
more miserable ever since. "I have  
led a wretched life," he muttered to  
himself, as the train sped on. "Let  
her be wretched, too."

But he forgot as he spoke the mar-  
tyrdom through which the pretty,  
proud girl had passed as his wife;  
the utter despair of knowing how  
helpless she was to avert the doom  
she saw descending on the man she  
had once loved.

He forgot the woman as he had  
seen her last, tearless, heart-broken,  
with wistful eyes strained to ter-  
rible tension, hearing his hard words  
with those unmoved lips that goad-  
ed him to fresh madness, bearing all  
in terrible, pitiful patience—he forgot  
the picture in the vision of the past.

A girl's lovely face rose up amid  
the shadows, laughing, sunlit, like a  
rosebud in a garden of sweetness  
and golden light, and he whispered  
tender words to her, and she smiled  
back at him. Ah, well! she was his  
wife still, though the world might  
think him dead, and he would bring  
her back to him, and keep her  
there.

He waited near the doorway of  
her house the next evening, dark as  
the shadows in the quiet street, grim-  
ly unobtrusive, but fiercely deter-  
mined all about her now. The pages of  
her life since he had left were laid bare  
for his inspection. The world still  
deemed him dead, and should go on  
thinking so until he told his wife the  
great news! His wife? She was  
thinking of becoming some one else's  
wife now, though. He smiled at the  
thought.

He knew the man well. He had  
been an old friend of hers in the  
years gone by, before her marriage,  
and he was a good man and true, and  
would care for her tenderly, and  
smooth the way for her very gently  
along the path of life. But it should  
never be—never!

This very night he would see her,  
and tell her that she must give up  
the new and return to the old life,  
with him, of course. He wondered  
how she would take the news? "She  
never screamed or fainted or made a  
fuss," he murmured, and gave her  
some approbation in his thoughts for  
the remembrance.

And now he was watching her  
doorway to see her pass down the  
steps with the other man. She was  
going to the theater, he had ascer-  
tained, and a carriage stood waiting  
for her and for him. The situation  
was fairly humorous.

"If she only knew!" he said to him-  
self, and laughed silently as the door  
opened, and a woman came out  
with the light step and the graceful  
swan-like bearing that he remem-  
bered so well in olden days.

And the ray from the carriage lamp  
fell on her upturned face, and re-  
vealed it absolutely, truthfully, to the  
watcher in the street.

But it gave him a sudden start of  
surprise. He had remembered the  
girl face that he had married, with  
its dainty smiles and dimples and  
tender, child-like eyes, with its rings  
of golden hair lying loosely over the  
white brows, and the rose-tint coming  
and going across the fair cheeks,  
but this was not the face that shone  
before him now.

It was a woman who had known  
sorrow, who had stood face to face  
with deep affliction, who had shed  
tears from her very heart, and  
prayed prayers from her inmost soul.  
The face was very beautiful now,  
with its look of dignified repose and  
its strangely pathetic smile; but it  
was not the face of a laughing girl  
any longer—only the presentment of  
a woman, loving and loyal and wom-  
anly, who had passed through sorrow,

## COME TO BELEN, N. M.,

Future Railroad Metropolis of New Mexico.  
Located on Belen Cut-off of Santa Fe R'y.

Belen is 31 miles south of Albuquerque, N. M., at the junction of the Main Line of the Santa Fe System—leading East and West from Chicago, Kansas City, Galveston and points East to San Francisco, Los Angeles, El Paso and Old Mexico.

1,000 business and residence lots, size 25x140 feet, laid out with broad 80 and 70-foot streets, with alleys 20 feet wide, with beautiful lake and public park and grand old shade trees; public school house, costing \$16,000; churches; Commercial Club; a population of 1,500 people; several large mercantile establishments; the Belen Patent Roller Mill, capacity 150 barrels daily; large winery; three hotels, restaurants, etc., Belen is the largest shipping point for wool, flour, wheat, wine, beans and hay in Central New Mexico. Its importance as a great commercial railroad city in the near future cannot be estimated.

The  
Belen Town and  
Improvement  
Company  
are owners of the  
BELEN TOWNSITE

JOHN BECKER, President.

W. M. BERGER, Secretary.

## The Belen Town and Improvement Company

ALL FAST LIMITED EXPRESS, MAIL AND  
FREIGHT TRAINS OF THE SANTA FE WILL GO  
OVER THE MAIN LINE THROUGH TO BELEN,  
EAST AND WEST, NORTH AND SOUTH.

The lots offered are in the center of the city, well grad-  
ed (many of them improved by cultivation); no sand or  
gravel. We need a first class bakery, tailor shop, shoe  
house, jeweler, plumbing shop, planing mill, coal and wood  
yard, drug store, harness shop, etc., etc., also a first class,  
modern hotel.

Our prices of lots are low and terms on easy payments;  
title perfect; warranty deeds. One-third purchase money,  
cash. Two-thirds may remain on note, with mortgage se-  
curity, for one year, with 8 per cent. interest thereon.

Apply at once for map and prices, if you wish to secure  
the choicest lots, to

and at the end found peace in the  
love of a true and noble-hearted man.  
The watcher in the street under his  
wild desire to revenge himself for  
his misfortunes on her, who had  
never added to them by one iota, felt  
a sudden pang for the woman he was  
about to drag back into his life.

The lover in the background looked  
kindly and true and protecting as he  
followed her down to the waiting car-  
riage. He bent to help her as she  
got in, and she flashed a pretty little  
smile at him, a smile full of love and  
trustfulness in his brave, reliant  
presence.

Then they drove away, and the  
street was quiet again, and only the  
crowding thoughts in the watcher's  
mind kept carnival.

He stole into the theater by and by,  
when he was tired of thinking out  
in the streets, and he found a cor-  
ner where he could see them without  
being seen. For a time he watched  
the changing expressions on her face  
as the play went on; the tender glad-  
ness that overspread it when she  
turned to speak to her lover, the sun-  
ny sweetness of her smile at some  
pretty bit of the dainty story. He  
saw the wistful shadows deepen in  
her eyes when a fair mother clasped  
her laughing baby to her breast. And  
perhaps it was a pity that they had  
had none. A pity, did he say? He  
was forgetting; it was well—well, in-  
deed, for such as him. His better na-  
ture, hidden somewhere all these  
long years, was creeping out like a  
thing long hidden, shamed of its very  
existence.

He felt suddenly sorrow for his  
wife, for himself, for the other man.  
It would be, fearfully, bitterly hard  
for her, he seemed to realize all at  
once; and why was he so eager to  
revenge himself on her? She had not  
caused his ruin, his downfall. On the  
contrary, she had pleaded with him  
on her knees—on her knees, he re-  
membered, with tears streaming from  
those gentle eyes and a voice broken  
by sobs, she had pleaded with him to  
go away from his temptations and  
his friends and start life anew with  
her. And he had laughed at her.

He remembered the scene as he  
struck him coldly as the fingers of  
some chilling wind. And then an-  
other thought came to him, and at  
first he could have laughed outright  
at the madness of the suggestion.

Why not go away now, back to  
Cuba, back to the other life, safe into  
oblivion again, and leave her as he  
had found her—free? What? After  
he had laid his plans so carefully and  
well, after he was fully determined  
to stop her making some one else  
and herself happy—leave her?

And yet? And yet?  
She had known bitter sorrow, and  
her youth had been shortened by that  
sorrow. She was young no longer.  
Her eyes looked weary now, and the  
smile had faded from her lips as she  
sat back in the shadows. Would she  
never smile again after he had re-  
claimed her?

A great resolve was forming itself  
in his mind. He would go away  
again as he had come, into the dim-  
ness of the unknown, into that far  
world across the seas. He would  
fight out his battles by himself.  
"Who knows? I might do better," he  
said, musingly. At any rate, she  
should be free; free to love a good  
man, free to be happy, and to smile  
as she had smiled to-night, free from  
him.

"I've never done a good deed in my  
life before," he said to himself, mock-  
ingly. "But I'll do one now. God  
knows, it costs me something, but I'll  
do it."

And then he gave her one look—  
the last—as she smiled again, into  
the happy face of the other man, and  
stole away into the night.

## Overconfidence.

Overconfidence has been the ruin  
of many a man. It is better not to  
boast, but rather to remember that  
we may be tempted, as did the old  
negro who applied for work.

"So you want to do chores for us?"  
said the gentleman on whom he had  
called.

"Deed I does."

"Well, I don't know. You look as  
if you were honest."

"Kumel, I's gwine to ter tell de  
troof 'bout dat. Yes see, I specks I's  
pukely honest, but I kahn't be sho."

"Why not?"

"Kase I ain't had 'nough speriense.  
I'se wifeted watermellons all right

'nough, but I ain't nebbber had 'no  
face-ter-face temptation wid chicken."

## City of London Churches.

Within the narrow limits of the city  
of London, with its mere handful of  
residents—only sufficient to people a  
small provincial town—there are still  
so many churches that you might wor-  
ship in a different one every Sunday

of the year without putting foot in-  
side of them all. Within the rural  
deanery of the east city there are to-  
day no fewer than ten churches, each  
of which ministers to a population of  
less than 200; the aggregate number  
of parishioners is 1,473, while the  
churches have accommodation for 2,760,  
thus providing almost two seats for  
every possible worshiper, including  
the infants in arms.

The Man and His Dog.  
A railroad brakeman and a friend  
were standing on a corner "cussing"  
everybody from the superintendent to  
the trainmaster, as is a part of their  
duties, when there passed them a man  
for whom the brakeman had an in-  
tense contempt. The two men sneered  
at him as he passed. A moment later  
the man's dog trotted by and the  
brakeman said, with fine sarcasm:

"There goes the second section."

## CREEKS AND THE LOST TRIBES.

Indians' Story of Their Wandering  
Away From Palestine

"The Indians are the most supersti-  
tious people on earth," said a man a  
few days ago who had taught for  
years in a Creek Indian School. "They  
have myths and legends by the score.  
Some of them are as beautiful and  
picturesque as the legends of the old  
Greeks and Romans."

"I boarded for five years with a  
Creek Indian who had been educated  
at Carlisle. He knew the Indian leg-  
end that they are one of the lost  
tribes of Israel. This Indian was  
the son of a medicine man who was  
once great and powerful in the tribe.  
All his knowledge of Indian lore came  
from his father, the medicine man."

"This medicine man said that the  
Creeks were one of the lost tribes of  
Israel. The legend ran that they were  
once associated with the other  
tribes and that they had wandered  
and became separated. They wandered  
for years far to the north until they  
came to a sea. There they built  
boats and embarked. They steered  
their course by the wand of a medi-  
cine man. Each morning he went to  
his teepee and set up his divining rod  
and told them which direction to pur-  
sue. They followed this rod from a  
warm country to a cold sea on which  
they set sail. The sea was crossed and  
then they traveled toward the south  
again."

"The Creeks have a covenant of  
their tribe which is kept with the  
chiefs. No one but the elect is ever  
permitted to see this guarantee of the  
genuineness of the Creek faith and  
origin."—Chickasha correspondence  
Kansas City Star.

## SYMPATHY WAS IN ORDER.

But Sam Johnson Was the One Most-  
ly in Need of It.

"Pardon me," says the sympathetic  
gent on the station platform, "you  
seem to be in distress."

The woman addressed turns her  
melancholy eyes upon the inquirer  
and replies:

"I am."

"Is there any way in which I might  
be of assistance?"

"I don't know. I've lost my hus-  
band, and—"

"Permit me to offer my condol-  
ences. Into each life some sorrow—"  
"Save your condolences for him  
when I get hold of him. We were sit-  
ting here waiting for the train to go  
home when a comic opera company  
came into the station. One of them  
was a big, fat blonde, and my husband  
got up and said he was going to get  
a drink of water. That was an hour  
and a half ago, and—save your sym-  
pathy, young man, save it for Sam  
Johnson, of Mudford, who will be  
in sore need of comforting words  
within ten minutes after he begins  
to make excuses to me."—London  
Tit-Bits.

## All Were Worried.

The mistakes made by telegraph op-  
erators are often very amusing and  
sometimes rather startling.  
A Washington girl, 16 years old,  
went west recently, and it was her

first trip unaccompanied by some  
member of the family.

After three days had elapsed and  
she had received no answer to her  
telegram, announcing her safe arrival,  
she decided to send another wire. This  
is the telegram as received by her  
fond parents:

"Why don't you write? Am mar-  
ried."

Her mother promptly fainted and  
her father rushed out, first after a  
physician, and secondly to wire the  
chief of police of a western city to  
look after a young girl, lost, strayed,  
stolen or married.

After many explanations by wire, it  
was found that a mistake had oc-  
curred in the telegraph office, and  
that the message should have read:

"Why don't you write? Am wor-  
ried."

Why He Stays at Home.  
"Mr. Higbee seems like a model  
husband."

"Yes, lately. He's home every  
evening now. You see, his wife got  
the burglar scare and bought one  
of those pretty little pearl-handled re-  
volvers."

"Well?"

"Well, as Mrs. Bigsbee wakes up  
at the slightest noise, and is very  
near-sighted, Bigsbee doesn't take any  
chances on prowling around the house  
after dark."

## CONVERSATIONAL NICETIES.

The requirements of polite conversa-  
tion occasionally puzzle the student of  
the English language, but one who has  
a governess will soon acquire them  
all.

Thus a young French woman who  
was learning English while on tour  
with an Anglican attendant, exclaimed,  
"O my, I am all of a sweat!"

"Miss Moreau," exclaimed her at-  
tendant, "never use that word again!  
Horses sweat, men perspire, ladies  
merely glow."—Youth's Companion.

## A Quadruped Bird.

A South American traveler has cap-  
tured a rare bird, whose interest to  
science is that it is a quadruped. It  
is known to the natives as the ciga-  
ana, or gypsy bird. For many days  
after hatching, before it is able to  
fly, the young one uses its claws to  
climb up bushes and trees. The front  
feet gradually develop into wings.  
The favorite haunt of this strange  
creature is among the huge calla-like  
flowers of the tropics, in low, muddy  
places. In size the ciganas is about  
as big as the ordinary pheasant.

## A Fruitarian Diet.

A fruitarian diet consists of the  
fruit of trees like apples, oranges, ba-  
nanas and olives, the fruits of bushes  
(like currants and raspberries), the  
fruit of plants (like strawberries and  
melons, lentils and beans and cucum-  
bers), the fruits of grasses (like  
wheat and barley and maize and oats),  
the fruits of nut trees (from filbert  
to cocconut), together with some  
earth fruits (like potatoes), and a  
modicum of vegetables and salads,  
says the Washington Review. To  
these may be added butter, milk,  
honey and cheese, although their pro-  
duction is not so free from risk of  
contamination and animal infection  
as is the case with the products of  
the vegetable kingdom and the world  
of fruits. Grown under healthy con-  
ditions, with diseased specimens easy  
to detect and remove, it is far more  
possible to live healthily and well  
upon a fruitarian dietary than upon  
the products of the slaughter house.

## "Victoria Soup."

It was Francatelli, the famous cook  
of Queen Victoria in early Victorian  
days, who used to observe casually,  
when serving a certain soup: "This  
was the only soup the queen would  
ever eat while I had the honor of  
being in her majesty's service."  
Francatelli's recipe for what he called  
"Victoria soup," is said to produce a  
delicious and nourishing form of what,  
in homely kitchens, would be known  
as veal broth. To make it, simmer  
half a pound of pearl barley for two  
hours in three pints of good veal  
stock. When the barley is quite soft  
and dissolved, take out one-third of  
it into a pan to keep hot, while the  
remainder is passed through a fine  
colander. Then put the puree back  
into the whole barley, add half a  
pint of cream, season, reheat and  
serve. Mace, onions and cloves in-  
troduced into the stock before the  
barley is added improve the flavor.

The Mexican Central has recently  
placed on sale tickets to New York and  
return, going via the Mexican Central  
to either Vera Cruz or Tampico,  
thence via the famous Ward Steam-  
ship Line to New York. The return  
will be by rail over any line to El  
Paso. The entire trip, covering thou-  
sands of miles, Havana, Cuba, and its  
famous Moro Castle, Newport, and a  
dozen of the largest cities of the United  
States, can be made for \$122.50. A  
more delightful trip can not be  
planned, as stop-over privileges are  
allowed and the tickets are good for  
one year from the date of sale. The  
trip includes the City of Mexico, the  
"Paris of America." Further infor-  
mation can be secured by addressing  
A. Duloher, Commercial Agent, El  
Paso, Texas, or W. D. Murdock, As-  
sistant General Passenger Agent, City  
of Mexico.

If you cannot afford to pay for a  
daily paper, subscribe for the Weekly  
New Mexican Review and get the  
cream of the week's doings. It is a  
good paper to send to your friends.

If you want anything on earth—try  
a New Mexican "ad."

## FRATERNAL SOCIETIES

## MASONIC.

Montezuma Lodge No.  
1, A. F. & A. M. Regu-  
lar communication first  
Monday of each month  
at Masonic Hall at 7:30  
p. m.

H. F. STEPHENS, W. M.  
ALAN R. MCCORD, Secy.

## Santa Fe Chapter, No.

1, R. A. M. Regular  
convocation 2nd Mon-  
day of each month at  
Masonic Hall at 7:30  
p. m.

S. SPITZ, H. P.

ARTHUR SELIGMAN, Secy.

## Santa Fe Commandery No.

1, K. T. Regular convoca-  
tion fourth Monday in each  
month at Masonic Hall at  
7:30 p. m.

W. E. GRIFFIN, H. C.

W. H. KENNEDY, Recorder.

## Santa Fe Lodge of Perfection No. 1.

14th degree, Ancient and Accepted  
Rite of Scottish Free Masonry meets  
on the third Saturday of each month  
at 7:30 o'clock in the evening in  
Masonic Hall, south side of Plaza.

Visiting Scottish Rite Free Masons are  
cordially invited to attend.

CHARLES FRANKLIN MASLEY, 33.

Venerable Master.

PERCY FRANCIS KNIGHT, 14, Sec.

## I. O. O. F.

Santa Fe Lodge, No. 2, I. O. O. F.,  
meets every Thursday evening in Odd  
Fellows' Hall, San Francisco street.  
Visiting brothers welcome.

J. E. LACOME, N. G.

DAVID L. MILLER, Secy.

## KNIGHTS OF PYTHIAS.

Santa Fe Lodge, No. 2, Knights of  
Pythias. Regular meeting every first  
and third Tuesday evenings at 8  
o'clock, Castle Hall temporarily with  
Odd Fellows, San Francisco street.

Visiting Knights given a cordial and  
fraternal welcome.

PAUL A. F. WALTER, C. C.  
JOHN K. STAUFFER, K. R. S.  
D. LOWITZKI, Master of Finance.

## B. P. O. E.

Santa Fe Lodge, No. 460, B. P. O. E.,  
holds its regular session on the second  
and fourth Wednesdays of each month.  
Visiting brothers are invited and wel-  
come.

NORMAN L. KING, H. M.

A. J. FISCHER, Secy.

## FRATERNAL UNION.

Santa Fe Lodge, No. 259, Fraternal  
Union of America. Regular meetings  
first and third Mondays in each month  
at 8 o'clock p. m., Odd Fellows' Hall,  
San Francisco street. Visiting Frat-  
ers welcome.

R. L. BACA, Fraternal Master.

DAVID GONZALES, Secy.

MAQUIN G. MONTOYA, Treas.

Wells Fargo & Company  
Express.

General Express Forwarders

TO

## All Parts of the World.

Save Money and Inconvenience by Purchasing Wells Fargo  
DOMESTIC MONEY ORDERS, TRAVELERS'  
MONEY ORDERS, FOREIGN MONEY ORDERS.  
Payable Throughout the United States, Canada, Mexico  
and all Foreign Countries.

REMITTANCES SENT BY TELEGRAPH.

J. D. BARNES, Agent.

A  
Remington  
Typewriter

renders double the service  
of any other writing  
machine.



The New Mexican Printing Company claims to do the best  
printing and binding in the Territory—says it makes a specialty  
of better grades of printing and binding—caters particularly to  
people who want something a little out of the ordinary or a little  
better than the average—does not claim to be the cheapest in the  
Territory, but does claim that its work is always worth the price  
asked for it, and this price is based on accurate knowledge of the  
cost of material and skilled labor; communicate with the Com-  
pany in regard to the next lot of printing. Address The New  
Mexican Printing Company, Santa Fe, N. M.

## Rubber Stamps

WHEN YOU FIND YOURSELF WRITING THE  
SAME THING FREQUENTLY IN THE COURSE OF  
YOUR BUSINESS, REMEMBER A RUBBER STAMP  
WILL SAVE YOU A GREAT DEAL OF TIME. BUSY  
PEOPLE ARE USING RUBBER STAMPS MORE  
NOW THAN EVER BEFORE BECAUSE THEY SAVE  
TIME, AND TIME IS MONEY THESE DAYS.

## PRICE-LIST

One-line Stamp, not over 2 1/2 inches long ..... 15c  
..... Each additional line on same stamp, 10c.  
One-line Stamp, over 2 1/2 and not over 3 1/2 inches long, 20c  
..... Each additional line on same stamp, 15c. ....  
One-line Stamp, over 3 1/2 and not over 5 inches long, 25c  
..... Each additional line on same stamp, 20c.  
One-line Stamp, over 5 inches long, per inch ..... 5c  
..... Each additional line, same price.

Curved lines on Stamp count as two lines.  
Borders of all shapes, under 3 inches long way, 25c extra.  
Larger sizes at proportionate prices.  
Where type used is over one-half inch in size, we charge  
for one line for each one-half inch or fraction.

DATES, ETC.

Local Dater, any town and date for ten years ..... \$1.30

Ledger Dater, month, day and year in 4-inch ..... 50c

Regular line Dater ..... 35c



## GROCERS, BAKERS, BUTCHERS!

## CARTWRIGHT-DAVIS CO.

No. 250 San Francisco Street.

Grocery Telephone No. 4. Meat Market Telephone No. 49.

## CHRISTMAS POULTRY.

Our best attention will be given to all future orders placed with us for Xmas turkeys or geese. Poultry at Christmas time is fatter than at any time for the year.

## NEW DATES AND FIGS.

Advance shipments of new dates and new imported layer figs are now in. Dates 2 lbs. for .....25c Extra large and fine figs, per pound.....25c

## COCOANUTS.

A shipment of very nice cocoanuts now on sale, each .....10c and 15c.

## CELERY.

Native celery is now sufficiently bleached to be desirable, 2 stalks for 15c, unsurpassed.

## SEALSHIP OYSTERS.

We now have sealship oysters on sale nearly or quite every day in the week. Blue Points direct from Long Island, 35c pint.

Seals from Louisiana, 65c quart. No ice or ice water touches these oysters from the time they are shucked until you receive them in your kitchen. Salty tang of old ocean is fully retained.

## MEAT MARKET.

At this time of year native grass

fed beef begins to get poor and stringy. We receive regular shipments of corn fed beef, as well as pork, veal, mutton and lamb.

Breakfast bacon, sliced boiled ham, etc., we now cut on our new slicer which is the best ever. Each slice of uniform thickness and just to please you.

## CANDY.

We are receiving almost daily additions to our stock of candy. Many beautiful boxes at moderate prices. A number of new things in fancy designs empty which you may fill yourself. Our line of Xmas candy at 15c per pound is a dandy. Some additions will be made to that from time to time.

## ORNAMENTS.

We are opening up our tree ornaments and it would be well to look them over soon so as to get first choice.

## CANNED TOMATOES.

Canned tomatoes are very high much higher than when we bought ours. We will give our customers a chance to buy by the case at a very low price if done soon.

2 cans Golden Elk Tomatoes.....25c  
1 doz. cans for.....\$1.35  
1 case, 2 doz. cans, for.....\$2.50.

## Personal Mention.

(Continued from Page Four)

President W. S. Hopewell of the Albuquerque Eastern Railway is in town from his home in the Duke City and will remain several days. Mr. Hopewell expects several eastern capitalists to arrive here shortly to make another investigation of the Santa Fe Central Railway System, the Albuquerque Eastern and the Hagan coal fields. Thereafter the entire party, Mr. Hopewell included, will go east, it is understood with the object of arranging for the completion of the Albuquerque Eastern and the development of the coal deposits at Hagan.

The handsome and hospitable home of ex-Governor M. A. Otero and Mrs. Otero was the scene of a charming dinner party on the evening of Thanksgiving day. The dining room was profusely decorated, the color scheme being in white and green with chrysanthemums as the prevailing flower. A vase full of huge white chrysanthemums formed the centerpiece of the table and each of the diners received one of the shaggy blossoms. The menu was elaborate and served in courses. Covers were laid for twelve. Besides the host and hostess and Governor Hagerman there were present Major and Mrs. J. J. Pallen, Hon. and Mrs. Arthur Seligman, Miss Otero, Miss Paddock, Levi A. Hughes, Manuel B. Otero and J. W. Patterson.

Hon. Charles A. Spiess, of East Las Vegas, prominent attorney and member-elect to the Legislative Council from San Miguel County, spent this week in this city on legal business. He is always welcome.

Jefferson Reynolds, president of the First National Bank at East Las Vegas, reached the city Wednesday and took Thanksgiving dinner with his son, Territorial Secretary J. W. Reynolds, and with Mrs. Reynolds. He had such a pleasant time that he remained over and will not leave for home until tomorrow morning.

Captain and Mrs. E. C. Abbott will entertain at a dinner party this evening at their home on the south side. Those invited are Judge John R. McPhee and Mrs. McPhee, Mr. and Mrs. A. F. Walter, Mr. and Mrs. F. W. Shearon, Major W. H. H. Llewellyn, of Las Cruces, and Morgan O. Llewellyn.

The Thanksgiving festivities included a dance Thursday night given by the popular Capital City Club. It was one of the regular fortnightly events of the organization but had been postponed from Tuesday night until the evening of Thanksgiving day. Those enjoying the pleasures of the evening were Attorney General and Mrs. W. C. Reid, Captain and Mrs. E. C. Abbott, Mr. and Mrs. S. Spitz, Mr. and Mrs. S. G. Cartwright, Mr. and Mrs. F. W. Shearon, Mr. and Mrs. J. J. Goutchey, Mr. and Mrs. N. L. King, Mr. and Mrs. C. L. Bishop, Judge and Mrs. John R. McPhee, Mr. and Mrs. J. N. Zook, Mr. and Mrs. D. W. Lusk, Mrs. W. H. Hahn, of Albuquerque; Mrs. E. A. Pliske, Mrs. David Knapp, Mrs. O. C. Watson, Mrs. Jennie Watson, Miss McConnell, Miss McKenzie, Miss Spitz, Dr. Charles A. Wheeler, Dr. C. N. Lord, A. F. Spiegelberg, C. L. Haberlein, H. J. Beidelman, Frank Crandall, Carl Bishop and Jerry Ferris.

Last Saturday evening the home of Mr. and Mrs. Charles L. Bishop on the north side was the scene of an informal dinner party in the nature of a farewell to the Misses Florence and Shirley Packer, who left the first of the week for a trip to the Grand Canyon and the City of Mexico. The menu was in the nature of a "Mexican dinner." The guests were: Mr. and Mrs. D. W. Lusk, Miss McConnell, Miss Marion Bishop, Dr. Frank Mera and C. L. Bishop.

Miss Marion Bishop entertained the high school class which will graduate in 1908, last night at her home on the north side. The evening was spent in games, music and conversation. At 10 o'clock the guests were invited into the dining room, where a pleasing luncheon was served. Those present were: Misses Mary McPhee, Toatsie McPhee, Amy Whitman, Mable Eastley, Frances Abbott and Fern Enos; Edward Safford, Jacob Safford, Homer Stevens, John McPhee, Elmer Marsh, Clayton Kinsell and Lewis Stewart.

**Crystal Wedding Anniversary.**  
Monday last was the fifteenth or crystal wedding anniversary of Mr. and Mrs. John H. Walker, of 118 Grant Avenue, the former being the well known city engineer of Santa Fe. The occasion was celebrated in the evening with a reception at which a large number of their friends were invited. Mr. and Mrs. Walker were united in marriage on November 26, 1891, at Gainesville, Florida. Mrs. Walker's maiden name was Miss Lily McCuen. They located in Raton immediately after their marriage where they remain

ed until 1894, when they removed to Santa Fe. This city has been their home ever since, and their present residence is one of the handsomest in the Capital. The estimable couple received a large number of presents appropriate to the anniversary celebrated as tokens of the sincere esteem in which they are held. Mrs. Belle Walker, of Raton, the aged mother of Mr. Walker, was in attendance and will remain here for the winter. The invitation list included Governor Hagerman, Territorial Secretary J. W. Raynolds and Mrs. Raynolds; Attorney General W. C. Reid and Mrs. Reid, Judge John R. McPhee and Mrs. McPhee, Judge N. B. Laughlin and Mrs. Laughlin, Surveyor General Morgan O. Llewellyn and Mrs. Llewellyn, Rev. and Mrs. George F. Sevier, Mr. and Mrs. S. Spitz, Mr. and Mrs. T. P. Gable, Mr. and Mrs. A. J. Fischer, Mr. and Mrs. Alan G. McCord, Mr. and Mrs. McBride, Mr. and Mrs. Charles F. Eastley, Mr. and Mrs. P. A. F. Walter, Mr. and Mrs. C. O. Luckenbach, Mr. and Mrs. Theodore Corrick, Mr. and Mrs. Frank Owen, Mr. and Mrs. Henry Woodruff, Mr. and Mrs. J. E. Wood, Mr. and Mrs. Sidebottom, Mr. and Mrs. Deschendorf, Mr. and Mrs. I. Sparks, Mr. and Mrs. F. P. Crichton, Mr. and Mrs. C. L. Bishop, Mr. and Mrs. R. J. Crichton, Mr. and Mrs. C. A. Haines, Mr. and Mrs. W. E. Griffin, Mr. and Mrs. R. H. Hanna, Mr. and Mrs. T. Z. Winter, Mr. and Mrs. Edward Ehle, Mr. and Mrs. Percy F. Knight, Mrs. Luckenbach, Mrs. Hurt, Mrs. Moore, Miss Elizabeth DuVal, Miss Eastley, Miss Luckenbach, Miss Massie, Miss Spitz, Miss McPhee, Miss Bach, Miss Simpson, Miss Dougherty; Dr. J. A. Massie, Dr. C. A. Wheeler, Hugh DuVal, A. J. Griffin, M. J. Warner, and Carl Bishop.

The Fifteen Club held a delightful meeting at the home of Mrs. J. P. Victory on Victory Street yesterday afternoon. The study of the works and characters of Dickens was continued, the topic for the afternoon being "The Tale of Two Cities." The papers and character sketches by members of the club were most interesting and enjoyable. Mrs. W. E. Garrison, Mrs. C. O. Luckenbach, Mrs. Paul A. F. Walter and Mrs. Field were guests of the club.

Assistant United States Attorney E. L. Medler of Albuquerque arrived in the city on the noon train today to assist United States Attorney W. H. H. Llewellyn at the present term of the United States District Court.

William B. Prince and Mrs. Prince, who came to Santa Fe from the Prince Sunshine ranch in Rio Arriba County to eat Thanksgiving turkey with Hon. and Mrs. L. Bradford Prince, will leave tomorrow for the ranch. They will return to Santa Fe on December 15th, after which time they will be at home at the Prince residence on Palace Avenue during the winter season.

**Informal Musicals By Santa Fe Misses.**  
Mrs. W. Hayes Moore had an informal musicale at her home this afternoon when a recital was given by a coterie of young girls composing her piano pupils. Only a few friends witnessed the affair aside from the pupils themselves and their instructor. The following is the delightful little program that was rendered.

**PART I.**  
Picolina—Duet.....Van Gall  
Lu Ree and Virginia Knight  
Happy Jack Hornpipe.....Atter  
Dorothy Safford  
Sweet Violet.....Smallwood  
Nellie Nushbaum  
Black Eyed Susan Waltz.....Streabog  
Evelyn McBride  
Bluebell.....Smallwood  
Helen Winter  
Pink.....Lieber  
Lu Ree Knight  
Playful Rondo.....Green  
Ruth Moore

**PART II.**  
Rustic Dance—Duet.....Meyer  
Ailis Candelario and Etta Moore  
Star of the Sea.....Kennedy  
Felicita Kayne  
Woodland Echoes.....Wyman  
Pauline Kinsell  
Song of the Brook.....Quigley  
Dorliska Crandall  
Lily of the Valley.....Smith  
Ailis Candelario  
Columbine.....Delhaye  
Etta Moore  
Love's Caprice.....Heindl  
Fern Enos  
Lohengrin.....Leybach  
Ada Harvey

Mrs. Moore has recently received a Knabe baby grand piano purchased from the McKannon Music Company of Denver, which was used by the students in the recital.

The public is showing its appreciation of the attractive circulars sent out by the New Mexican Printing Company, in regard to rubber stamps,

## Minor City Topics.

(Continued from Page Five.)

Theodore Mares, aged about 45 years, died last night at the home of his nephew, Ysidro Mares, on lower San Francisco Street. He succumbed to an attack of paralysis with which he had been stricken a few days ago. He was unmarried.

The barbers of Santa Fe have entered into an agreement which becomes effective at once, whereby all shops will close at 7 o'clock in the evening during the week, with the exception of Saturday, when they will close at 11 o'clock.

John N. Zook and James R. Carithers this morning purchased the drug store of A. C. Ireland and will conduct the business under the firm style of Ireland Drug Company. Mr. Ireland expects to leave shortly to rejoin his wife, who is now in California. The two young men are well known in the city and have the best wishes of their friends for success in their new enterprise. Mr. Zook has been in the employ of Mr. Ireland for several years as prescription clerk. Mr. Carithers was until a few days ago day clerk at the Claire Hotel.

Train report at 4 p. m.: Santa Fe train No. 2, due here at noon, will pass Lamy at 6:30 p. m. and the train to connect with it will leave at 5:40 p. m. Train No. 1 will pass Lamy at 8:10 p. m., over three hours late; No. 9 is two hours late and No. 7 one hour late, and therefore there will be no trains from the East in Santa Fe before early tomorrow morning. Santa Fe train No. 3, which was due at noon, will be brought into Santa Fe at the same time as the other trains. The Santa Fe Central is reported an hour and a half late and the Denver & Rio Grande two hours late. Santa Fe train No. 8, due last evening, arrived this forenoon at 11:15 o'clock, at which time arrived also train No. 10. The trains are delayed by heavy storms to the north, south and west of Santa Fe.

A. Mahaney, a merchant at Farmington, San Juan County, reached the city Thursday. He came on business. Tonight two degrees will be conferred upon him by Santa Fe Chapter No. 1, Royal Arch Masons. Mr. Mahaney was a prominent citizen of Colorado for many years and recently moved to San Juan County for health reasons. From here he will go to Denver and other Colorado points to spend the holidays.

Owing to heavy snows north, east and west, all trains are reported to be many hours behind time today and no mail at all from the east arrived today. Train No. 2 from the south and west, on the Santa Fe, due this noon will not arrive until tonight some time. Train No. 10, from El Paso, Texas, however, arrived at 11:10 this forenoon, an hour ahead of time, and under a new arrangement brought the mail from Albuquerque in place of No. 2. The Denver & Rio Grande train is reported one and a half hours late as the result of snow covered tracks between LaVeta and Alamosa.

The following visitors have registered since Wednesday at the rooms of the Historical Society: James H. Gardner, Washington, D. C.; M. Maurer, Pueblo, Colorado; Isahel Huffman, Garrett E. Huffman, Monte Vista, Colorado; O. W. Oneal, Downs, Illinois; Frank Shehartewa, Oradella, Arizona; Mr. and Mrs. Maerle Mahoney, Farmington; Carroll C. Lindbeck, Rock Island, Illinois; Genevera Cowen, Pittsburg; W. L. Hart, Bell Ranch; Charles Styer, Philadelphia; Fannie E. Gardner, Annie A. Gardner, Martha W. Turner, New York; C. R. Dowler, Denver.

Go to Fischer's Drug Store for reserved seats for the Royal Male Quartet. Tickets 50 cents. Children 35 cents. Now on sale. Buy early and get a good seat.

The football game scheduled for Thanksgiving day between the U. S. Indian School eleven and a picked team composed of former football players now in Santa Fe was not pulled off. Superintendent Clinton J. Crandall refused to permit the school team to play down town and the Manager J. W. Patterson did not appear to be anxious to have the all-star eleven go out to the Indian School grounds.

Elias Garcia of precinct No. 4 is being pushed by his friends for constable of the precinct at the coming election for justice of the peace and constable in January next. Mr. Garcia is a Republican and is well and favorably known in the precinct. He has the necessary qualifications to make a good official. Canuto Alarid is spoken of as a candidate for justice of the peace on the Republican ticket in the same precinct.

Subscribe for the Daily New Mexican and get the news.

## Dr. PRICE'S Cream Baking Powder

Pure, Wholesome, Reliable

Made from cream of tartar derived solely from grapes, the most delicious and healthful of all fruit acids.

Its use is a guarantee of perfect food and a protection against the ills that follow the use of alum, alum-phosphate and other low grade powders.

The mixtures called baking powders that sell for ten or twenty-five cents a pound, or a cent an ounce, are all alike, made from alum and costing less than three cents a pound.

## CHURCH ANNOUNCEMENTS.

**Cathedral Church.**  
First Sunday of Advent, December 2, 1906.  
First mass at 7 o'clock a. m.  
Solemn High mass at 9:30 and Consecration of the Blessed Sacrament during the whole Sunday.  
Solemn Benediction at 6 o'clock p. m.

On Saturday, Feast of the Immaculate Conception.  
**Church of the Holy Faith, Episcopal.**  
First Sunday in Advent.  
Sunday school 9:45 a. m.  
Morning service 11 a. m.  
All are cordially invited to attend.

**First Presbyterian Church.**  
George F. Sevier, Pastor.  
Sunday school 9:45 a. m.  
Preaching 11 o'clock.  
Rev. W. W. Havens, superintendent of the Anti-Saloon League for Arizona and New Mexico will address the congregation at the morning service.  
Junior Endeavor 2:30 p. m.  
Y. P. S. C. E. 6:30.  
Preaching 7:30.  
Subject: "Until Shiloh Come."  
Public cordially invited to these services.

**Methodist Church.**  
E. C. Anderson, Pastor.  
Sunday school 9:45 a. m.  
Epworth League 6:30 p. m.  
Morning preaching 11 o'clock.  
Evening preaching 7:30 o'clock.  
The pastor will preach Sunday morning and Dr. Havens of the Anti-Saloon League will occupy the pulpit in the evening.

## THE CORONADO RESTAURANT

## BILL OF FARE.

(A la carte)

"Menu"

Soup.

Cream of Celery.

Roasts.

Roast Beef and Juice Gravy.  
Roast Turkey with Dressing and Cranberry Sauce.

Sweet Entrees.

Apples a la Portugese.

Mashed Potatoes Stewed Tomatoes  
Sweet Corn.

Dessert.

Vanilla Ice Cream.

Pumpkin Pie

Mince Pie

G. L. Herrera, Prop.

## WILL SPEND HONEYMOON HERE

Mrs. Louise K. Foster of Astoria and Elmer E. Studley of Raton were married at St. George's Church, New York City, on November 21. The couple announced that they would spend the winter in Santa Fe after a honeymoon tour of Colorado, New Mexico and Arizona. Mr. Studley is a lawyer by profession and a member of the Territorial Bar Association.

## COAL AND WOOD

Raton and Monero Screened Lump, per ton.....\$5.50  
Good Commercial Raton Nut.....5.00  
Screened Domestic Lump, Trinidad Smithing, Kindling, Grate and Cord Wood. All orders receive prompt and careful attention.

## CAPITAL COAL YARD.

OFFICE: Garfield Ave. Near A. T. &amp; S. F. Depot. Phone No. 85.

Subscribe for the Daily New Mexican and get the news.



The Legislative Manual for 1905 or Blue Book for New Mexico, historical and official compendium of value to every business man and officer and interest to every citizen, 304 pages. Price \$1.50. Address the New Mexican Printing Company, Santa Fe.

## DR. DIAZ' SANITARIUM.

Cor. Water St. and Gaspar Ave.  
SANTA FE - NEW MEXICO.

ELECTRIC LIGHTED.  
STEAM HEATED.  
ALL MODERN CONVENIENCES FOR SICK PEOPLE.

PRICES:—\$16 to \$50 per Week.  
Payment invariably in Advance.

**HEADQUARTERS**  
for Wedding Cards and Announcements at  
the New Mexican.

**THE NEW MEXICAN PRINTING COMPANY**  
— In the Place For —  
**Mercantile Stationery**  
Manufacturer of  
**BLANK BOOKS AND LEDGERS.**

Santa Fe, : : : : New Mexico.

**"THE CLUB"**

The old established line of goods formerly carried at "Our Place" has been added to my stock. I buy my goods in government bond and can guarantee absolute purity. Elegant club rooms in connection. Side entrance to Coronado Hotel.

**J. W. AKERS, Proprietor.**

**CHARLES W. DUDROW**

**Lumber, Sash, and Doors**  
ALL KINDS OF BUILDING MATERIAL

Cord and Stove Wood Extra Dry, Cut to Fit Your Stove

**CERRILLOS COAL** Delivered to Any Part of the City

TRANSFER and STORAGE: We Handle Everything Movable  
Phone 35 Santa Fe. Branch Office and Yards at Cerrillos, N. M.

**For The Home People**  
ALL GOODS AT COST UNTIL THE HOLIDAYS.

Buy Your Christmas Gifts of  
**J. S. CANDELARIO,**  
THE CURIO MAN.

**FIVE SOUVENIR POSTAL CARDS FOR FIVE CENTS**  
Over 300 Views Of Santa Fe, Indian Pueblos and New Mexico Scenes.

**DRAWN WORK AT COST**  
ALL OTHER GOODS TO CORRESPOND

**INDIAN WARE, TURQUOIS AND FILIGREE SPECIALTIES**

301-303 San Francisco Street. J. S. CANDELARIO, Proprietor.

**A CUP OF GOOD COFFEE LIKE MOTHER USED TO MAKE**

"Fresh Roasted Coffee?—bah! Mother didn't use fresh roasted coffee, she had Arbuckles."

The way to get a good cup of coffee that tastes like Coffee with all the delicious flavor and aroma intact, is to buy a package of the old original Arbuckles' ARIOSA Coffee, and grind it as you want to use it, first warming it a little to develop the flavor and make the grinding easy. Coffee loses its identity as Coffee after being ground or exposed to the air and is easily contaminated by handling.

Arbuckles' was the first roasted packaged coffee.

The pores of each coffee berry are sealed after roasting with fresh eggs and granulated sugar to hold the goodness in and make the coffee settle clear and quickly; an actual application by machinery, of "Mother's" methods—as patented by this firm.

Sold only in packages, sealed for the consumer's protection, containing one pound full weight. Sales for 37 years exceed the combined sales of all the other packaged coffees. The best coffee for you to drink, and save you money besides.

Share old time, same old coffee. If your dealer won't supply, write to ARBUCKLE BROS., New York City.