

1-8-1898

## Santa Fe New Mexican, 01-08-1898

New Mexican Printing Company

Follow this and additional works at: [https://digitalrepository.unm.edu/sfnm\\_news](https://digitalrepository.unm.edu/sfnm_news)

---

### Recommended Citation

New Mexican Printing Company. "Santa Fe New Mexican, 01-08-1898." (1898). [https://digitalrepository.unm.edu/sfnm\\_news/5818](https://digitalrepository.unm.edu/sfnm_news/5818)

This Newspaper is brought to you for free and open access by the New Mexico Historical Newspapers at UNM Digital Repository. It has been accepted for inclusion in Santa Fe New Mexican, 1883-1913 by an authorized administrator of UNM Digital Repository. For more information, please contact [disc@unm.edu](mailto:disc@unm.edu).



# SANTA FE NEW MEXICAN.

VOL. 34.

SANTA FE, N. M., SATURDAY, JANUARY 8 1898.

NO. 269.

## NO. 4 BAKERY.

## GROCERIES, CROCKERY, GLASSWARE, LAMPS AND CHINA.

Pink Alaska salmon, 10	Colorado hay, per cwt., 60
Red Alaska salmon, 12	Alfalfa, per cwt., 50
Salmon steaks, per can, 16	White oats, per cwt., 1.10
Sweet corn, per can, 10	Corn, per cwt., 90
Tomatoes, per can, 10	Beans, per cwt., 85
Domestic sardines, per can, .05	Old Homestead flour, 50 lbs., 1.20
Mustard sardines, per can, 10	Jewell flour, 50 lbs., 1.00

Chase & Sanborn's Seal Brand Coffee, 2 lb can, \$ .80  
Chase & Sanborn's Royal Gem Tea, lb. packages, .75  
Best Java & Mocha Coffee, bulk, .35  
Crushed Java Coffee, 15

H. B. CARTWRIGHT & BRO.

TELEPHONE 4

First-Class in All Particulars

## The Palace Hotel

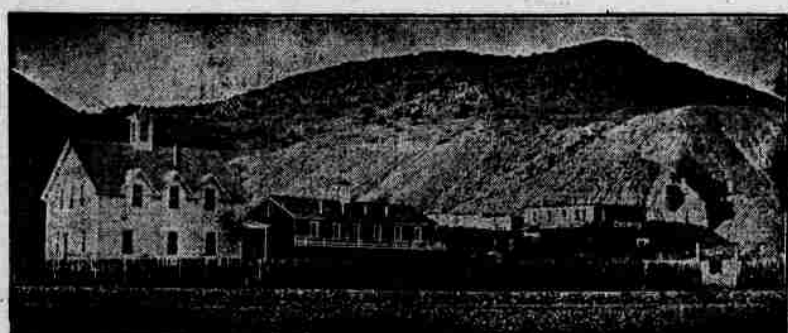
WM. VAUGHN, Prop.

FRANK HUDSON, Clerk.

No expense will be spared to make this famous hostelry up to date in all respects. Patronage solicited

## OJO CALIENTE

(HOT SPRINGS.)



THESE Celebrated Hot Springs are located in the midst of the Ancient Cliff Dwellers, twenty-five miles west of Taos, and fifty miles north of Santa Fe, and about twelve miles from Burque Station on the Denver & Rio Grande Railway, from which point a daily line of stages runs to the Springs. The temperature of these waters is from 90° to 125°. The gases are carbonic. Altitude 6,000 feet. Climate very dry and delightful the year round. There is now a commodious hotel for the convenience of invalids and tourists. These waters contain 1,000 grains of alkaline salts to the gallon, being the richest alkaline Hot Springs in the world. The efficacy of these waters has been thoroughly tested by the numerous cures attested to in the following diseases: Paralysis, Rheumatism, Neuralgia, Consumption, Malaria, Bright's Disease of the Kidneys, Syphilis and Mercurial Affections, Scrofula, Catarrh, La Grippe, all Female Complaints, etc., etc. Board, Lodging and Bathing, \$2.50 per day. Reduced rates given by the month. This resort is attractive at all seasons and is open all winter. Passengers for Ojo Caliente can leave Santa Fe at 10 a.m. and reach Ojo Caliente at 5 p.m. the same day. Fare for the round trip from Santa Fe to Ojo Caliente, \$1. For further particulars address—

ANTONIO JOSEPH, Prop.,  
Ojo Caliente, Taos County, New Mexico

## HOTEL WELLINGTON

Formerly Welcker's.

American and European Plans.

15th Street, Near U. S. Treasury,

Washington, D. C.

European Plan, \$1.00 per day and Upward. First Class Restaurant and Cafe.  
American Plan, \$3.00 per day and Upward. Transient and Permanent Guests.

L. M. FITCH, Proprietor.

## AMERICAN PLAN

Fire Proof and Steam Heat  
Electric Lights and Elevator  
Everything First-Class

## CLAIRE HOTEL

SANTA FE, N. M.

Rates, \$2.00 & \$2.50 per day

F. G. ERB,  
PROPRIETOR

## HANNA IS HOPEFUL

Indications Now Are That the Bolting Combine in Ohio Has Lost Its Grip.

## REPUBLICANS IN EARNEST

Demand That Their Representatives Obey Their Instructions to Vote for Mr. Hanna—Kurtz Issues a Manifesto.

Columbus, O., Jan. 8.—There are reliable reports today indicating that Hanna has the necessary 73 votes.

The opposition depended upon the following ten Republicans voting with the 65 Democratic members of the legislature: Representatives Mason and Bramley, of Cuyahoga; Jones, of Stark; Griffith, of Union; Oles, of Hamilton; Scott, of Fulton; Redkey, of Highland; Rutan, of Carroll; Manuel, of Montgomery; Senator Burke, of Cleveland.

This would make the joint ballot stand 73 to 70 against Hanna.

At a public meeting held in Dayton last night, at which resolutions were adopted condemning Governor Bushnell and the bolting Republican members and demanding that Charles L. Kurtz resign as the Ohio member of the national Republican committee, Representative Manuel made a speech pleading himself unequally for Hanna.

Representatives Griffith, of Union, and Jones, of Stark, are reported to have done the same thing at their homes. And there are like reports from Rutan, of Carroll, and Redkey, of Highland.

There are apparently 72 members pledged to Hanna publicly, but that is one short and the opposition concede no loss except Manuel.

The anti-Hanna men admit that, after securing control of both branches of the legislature, they made the mistake of adjourning from Wednesday to Monday and having the members go home till inauguration day. The Republican members, co-operating with the Democrats against Hanna, were thus confronted with indignation meetings at their homes which are likely to turn the tide in favor of Hanna.

The opposition made persistent efforts last night for Senator Foraker to come here, but the senator left Cincinnati for Washington without stopping at Columbus. All efforts to get either Foraker or John R. McLean here have failed and they are credited with being the two great factors in the "combine."

Hanna's Election Claimed.

Columbus, Jan. 8.—Representative Griffith announced to a meeting of his constituents last night and again today, that he did not want to vote for Senator Hanna, but if it was his wish, he would do so. There is no lack of effort in Union county now on the part of the people to express their wishes to their representatives.

The Hanna list stood 73 to 71 against the senator yesterday, but, with the changes of Manuel and Griffith, the Hanna men claim that they have the necessary 73 votes to 72 for the opposition.

Kurtz Claims Hanna's Defeat.

Columbus, O., Jan. 8.—Charles L. Kurtz, leader of the opposition to Hanna, today handed the following to a representative of the Associated Press: "The incorrectness of the claims by Hanna were proved by the test votes in the matter of the house organization. He claimed the organization up to the time the test vote was taken and lost. The same claims are being made again on the senatorship and the result will be the same. Hanna will not be elected senator."

[Signed.] C. L. KURTZ.

JUDGE LYNCH RAMPANT.

Murderers and Rapists Hanged by Mobs

This Morning—Arkansas and Wisconsin Scenes of Violence.

Little Rock, Ark., Jan. 8.—Four colored men have been lynched in the vicinity of Bearden, Ark., within the past few days. Two were rapists and two murderers. The rapists, Devoe and Huntley, were swung up near the Harlow mill ranch, about three miles north of Bearden, while the murderers met their fate near the county house at Little Bay, a few miles south of Bearden. The work was done by separate mobs.

Devoe and Huntley were lynched for a crime committed a year ago. They attempted to outrage Mrs. Palm, a respectable white woman, in Bearden. Both negroes escaped and remained out of that vicinity for twelve months.

The two other men lynched were accused of the murder of Bart Frederick, in charge of the water pump for the Cotton Belt railroad, at Kingland, a few days ago. Frederick was thrown from a bicycle and murdered. His pockets were rifled and a watch taken.

Jailers Forced to Give Up Keys.

Colfax, Wis., Jan. 8.—Marshal "Black-eye" Chadwick, suspected of the murder of young Hayden, near Farmington, on the night of October 22, was taken from the jail this morning and hanged to the west wall of the county house after E. B. Treff, the only officer about the court house, was awakened and forced to give up the keys of the jail.

More Wages Wanted.

Columbus, O., Jan. 8.—The Ohio miners' convention today decided to ask an advance of 10 cents a ton when the contract for the next year is made.

Death of Major Handy.

Augusta, Ga., Jan. 8.—Major Moses P. Handy died today. Handy has been an invalid for two months. He was ill in Paris, whither he had gone as the special commissioner of the United States to the French exposition in 1900.

An Infant Murdered.

St. Joseph, Mo., Jan. 8.—Early this morning an unknown man broke a hole in the ice on the Missouri river and shoved a small child into the opening. The act was witnessed by a man, who, after telling a boy to notify the police, followed the murderer across the river to the Kansas side. Neither pursuer nor murderer has been found.

## Window Glass Factories Resume

Alexandria, Ind., Jan. 8.—The window glass factories here, employing 1,200 men, commenced work this morning.

## CIVIL SERVICE SCORCHED.

Congressman Hepburn Says the Public has Been Misled by False Sounding Titles.

Washington, Jan. 8.—The civil service debate was continued in the house today until 2 o'clock. The remainder of the session, under special order, was devoted to eulogizing the memory of the late Representative Wright, of Massachusetts.

On the civil service question, Congressman Corlies, representing from Michigan, was the first speaker today. He favored radical modifications of the law. He thought that constitutionally the heads of the departments were clothed with the power for appointing their subordinates. To that extent he thought, if tested, the law would be unconstitutional. He believed that the right of removal should be restored and the tenure of office limited. Congressman Hepburn, Republican, of Iowa, spoke an hour against what he termed the popular impression of the so-called merit system. "The public," he argued, had been utterly misled by the high sounding titles used in referring to it. In some things the old system at its worst, was superior to the new. "My colleagues in this house," said he, "know the qualifications of their constituents and in the selection of candidates for office have everything at stake. I believe there is greater possibility in action, wisdom in selection and beneficent result under the old system than in this dark delusory method into which we have fallen in this latter time."

The appointing power and the power of removal should be lodged in the same hands and should be unlimited. Amid a burst of applause from the galleries and floor he insisted that political workers were entitled to and should be accorded recognition. If there were to be no reward for workers, the workers in the future would be more and more loyal to rich contributors instead of their party and their country. If the present system was continued, the influence of rich men in politics would grow steadily. Congressman Hepburn said he knew his frank expressions would earn criticism for him, and it would probably be said that he placed himself on a low political plane, but these were his convictions and he would utter them. Congressman Clark (Republican of New Hampshire), closed the debate for today with some remarks in favor of modifying the law. He said "any old thing" was better than the present law. (Laughter.)

## Civil Service Position Tendered.

Washington, Jan. 8.—Ex-Representative Mark S. Brewer, of Michigan, has been tendered the position as a member of the civil service commission. Mr. Brewer was a colleague of Major McKinley in the house, and an original McKinley advocate for president in Michigan.

## Steamboat Blown Up.

Pittsburg, Jan. 8.—The towboat Percy Kelsey blew up on the Ohio river, near Glenfield, Pa., this morning. The steamboat left here for Cincinnati with a tow of seven barges and two flats of coal. There was a crew of nine men and a number of deck hands. It is believed that Captain Leslie Jones and all on board were killed. The boat was owned by W. H. Brown's sons, of this city, and was valued at \$25,000.

## Favorable Bank Statement.

New York, Jan. 8.—The weekly bank statement shows the following: Surplus reserve, increase, \$8,475,825; loans, increase, \$1,995,300; specie, increase, \$1,357,800; legal tender, increase, \$7,250,100; deposits, increase, \$10,578,300; circulation, increase, \$64,700. The banks held \$22,964,575 in excess of requirements.

## MARKET REPORTS.

New York, Jan. 8.—Money on call steady at 3 per cent; prime mercantile paper, 3½ @ 4; silver, 37; lead, \$3.55; copper, 10½.

Chicago.—Wheat, January, 92½; May, 91½. Corn, January, 26½; May, 29¼ @ 29½. Oats, January, 21½; May, 23½.

Kansas City.—Cattle, receipts, 1,000; market, unchanged; only retail trade. Sheep, receipts, 300; market, strong; lambs, \$4.00 @ \$5.50; muttons, \$4.00 @ \$5.50.

Chicago.—Cattle, receipts, 300; market, quiet and unchanged. Sheep, receipts, 3,000; market, steady, strong; natives, \$2.00 @ \$4.65; westerns, \$3.00 @ \$4.40; lambs, \$4.00 @ \$5.75.

## Suicide in Iowa.

Bedford, Ia., Jan. 8.—James R. McConville, the justice of the peace and a prominent citizen, who last night shot and killed his divorced wife while trying to obtain possession of their children, was found dead today in the yard of Sheriff Lane. He had evidently shot himself, for there was a bullet hole in his head.

## JOSE B. SERNA KILLED.

Young Man of Espanola Accidentally Shot Himself Near Rio Puerco on Thursday.

The remains of Jose B. Serna, the oldest son of Mr. Francisco Serna, of Espanola, passed through Santa Fe this morning to the family home.

The young man met his death near Rio Puerco, in Valencia county, by the accidental discharge of a rifle in his own hands. He was in charge in a sheepherders' camp, and on Thursday morning, while packing the camp effects preparatory to moving, grasped the rifle by the muzzle and pulled it toward him. The gun caught in the bushes and was discharged, the ball passing through his body, causing death in about three hours. The remains were taken across the country by two boys, F. Salazar and M. Garcia, to Albuquerque, where they were prepared for burial and shipped to his home. The deceased was 23 years of age and bore an excellent reputation in his home town. The funeral took place this afternoon.

## TERRITORIAL PERSONALS.

### Albuquerque.

John H. Knebel, of Denver, is in the city. J. V. Fleming, the territorial coal mine inspector, came in from Silver City on Monday night, and continued west to inspect the mines at Gallup.

Henry Lord, the well known cattle raiser, of Burlington, Kas., recently came in from the south and is being introduced around by Major W. A. Rankin.

A. H. Hilton, the big general merchant of San Antonio, and his bright son are here, coming in from the south last night, and registered at the Highland. They will remain several days. Mr. Hilton states that his wife is visiting relatives and friends in Fort Dodge, Ia., says the Citizen.

The Citizen learns that Miss Claude Albright will give three concerts in the territory—one at Las Vegas, one at Santa Fe and the third here—before her departure for Europe. She will be assisted by Professor DiMauro, P. P. Bliss, W. E. Harper and others.

### Silver City Sprays.

Mr. and Mrs. V. Culberson received a royal welcome on their arrival on Wednesday.

Mrs. J. L. Whitton, wife of the bright editor of the Deming Headlight, is visiting relatives in this city.

Lou H. Brown, the genial cashier of the Deming National bank, was a visitor in the city on Wednesday.

Mr. W. J. Stockler, of Mule Spring, and Miss Edie Hanna, of Pleasanton, were united in marriage by Judge Bantz on Monday.

Hon. W. A. Hawkins was called to Socorro on Wednesday to attend important litigation for clients before the District court at that place.

Hon. J. A. Mahoney, of Deming, and ex-Governor W. G. Rich, of Engle, regents of the normal school, came to town on Wednesday to attend a meeting of the board.

Alvin F. Sortwell, well and favorably known in this community as one of the owners of the Maud S. property at Mogollon, has been re-elected mayor of Cambridge, Mass.

### Raton Ripples.

Miss Alice Twitty left on Monday to visit friends in Pueblo, Colo.

Little Miss Mary Schroeder entertained a party of her friends on Thursday.

Little Miss Marine Ruffner gave a dolls' tea party to her friends on Tuesday afternoon.

Henry Pritchard, the Elizabethtown merchant, left Raton last week for England, where he will spend the winter.

Miss Edna Owen, of Trinidad, a well known young lady in Raton, was married at Folsom last Sunday evening, to E. E. Ferguson, of Summers county, Kas.

### Las Cruces Notes.

Harry Bailey returned to Juarez on Thursday.

Max Armijo returned from his Mexico visit on Thursday.

Don Nestor Armijo left for Chihuahua last week on a visit.

Miss Maggie McGee has returned from a visit to Organ.

Mrs. L. L. Morley and son, Roland, are east visiting Mr. Morley.

Mr. and Mrs. H. B. Arnold have gone to Kansas City to visit relatives.

Miss Katherine Miles gave a party to 12 little misses on Tuesday afternoon.

Miss Maggie Fountain took charge of the postoffice in Mesilla on January 1.

Mrs. R. L. Young and Mrs. C. T. Jordan entertained a group of ladies on Thursday and Friday afternoon.

Last Saturday evening Mr. and Mrs. F. C. Barker, assisted by their charming daughter, Miss Millicent, entertained the Whist club together with a number of young ladies and gentlemen friends.

One of the most elaborate and artistically arranged receptions of the season was given by Miss Ida Jones at her mother's residence in Mesilla last Monday evening to her young lady and gentlemen friends.

A riding party, consisting of the Messrs. Armstrong, May, DeMier, Maud McGee and Messrs. Bellamy and Banner, took a trip to the Shalam colony last week, where they were shown every courtesy by Mr. Howard and wife.

F. Moreno, our popular druggist, celebrated his 37th birthday on Monday. When he went into his dining room on that day he was surprised to find the table surrounded by quite a number of guests who had assembled at the invitation of Mrs. Moreno.

Miss Millicent, daughter of F. C. Barker, left for Chihuahua, where she is teaching in the French academy of that city.

Miss Barker has been spending the holidays with her parents, and her absence from Las Cruces is greatly felt, as she is a favorite with society and with all who have the pleasure of her acquaintance.

### Socorro Salad.

W. B. Slaughter, now a resident of Oklahoma, is in the city attending court in some law suits in which he is an interested party.

Professor W. H. Seamon, director of the School of Mines, returned the early part of this week from a short holiday visit to the east.

M. W. Browne, of Las Vegas, accompanied by his family, was in the city to spend New Year's. They were the guests of E. L. Browne.

Hon. F. W. Clancy, one of Albuquerque's most able and prominent lawyers, was in the city a part of this week looking after his cases before the District court to the east.

Ralph Gunther, of Mogollon, superintendent of the Maud S. mine, is in Socorro attending court. Mr. Gunther is one of the best mining men in the southwest.

Invitations are out announcing the wedding of Rafael Pena and Tomasita Baca to take place at Bosquesito, January 7. After the ceremony a reception will be held followed by a dance in the evening.

### Cerrillos Callings.

Mrs. W. H. Howard, a sister of Mrs. Lebreton, is visiting the latter in this city.

Miss Lillie McVay, of Las Vegas, who came down last week to spend New Year's with the Cerrillos friends, returned Sunday night.

Conductor Dick Doyle, of Las Vegas, spent several days with Cerrillos and Madrid friends, returning to the Meadow city last Monday.

## YELLOW TREASURES

Colorado Capitalists Have Undertaken the Task of Developing Red River District.

## NEW MEXICO CRIPPLE CREEK

Red River Surface Indications More Promising Than Were Those of the Phenomenal Gold Camp—Important Work Projected.

The NEW MEXICAN yesterday made mention of the fact that Charles F. Potter, an attorney of Colorado Springs, had entered for a Colorado syndicate, at the United States land office in Santa Fe, 147½ acres of placer ground in the Red River mining district of Taos county, N. M.

Realizing that Mr. Potter not only takes front rank as a mining lawyer in Colorado, but represents a goodly amount of Denver, Colorado Springs and Cripple Creek capital, which is seeking investment in desirable mining properties in New Mexico as well as in Colorado, a representative of this paper sought an interview with him at the Exchange hotel this morning and was amply rewarded for doing so.

Mr. Potter has been actively interested, as an attorney and operator, in the phenomenal gold camp of Cripple Creek since 1892, and his attention and that of his associates was attracted to the Red River district about three years ago by its striking surface resemblance to the formation at Cripple Creek. Since then he and those with whom he is working have quietly and thoroughly examined the entire district, and as a result there have been organized the Red River City, Town & Mining company, and in its name have acquired a good deal of property in the district for extensive and systematic development.

"Of course such enterprises as we have undertaken were not possible so long as the Rio Colorado grant cloud hung over the district," said Mr. Potter, "but since the grant claim has been rejected by the United States court of private land claims and the appeal has been dismissed by the United States Supreme court, perfect titles can be secured and mined, men are no longer afraid to invest therein. We have a strong Denver, Colorado Springs and Cripple Creek combination in our company whereby we expect to get a good deal of capital into the district for development purposes."

"Dr. J. T. Reed, of Colorado Springs, who was prominently connected with the development of Cripple Creek and is a thoroughly trustworthy and competent mining man, has made a very exhaustive examination of the Red River district and has made a most favorable report thereon. It is his opinion, as well as my own," continued Mr. Potter, "that there is every indication that the district will develop into a prosperous gold producer. He has been made president and general manager of the Red River company and has permanently located at Red River City with his family."

"The actual development in the district so far is slight," added Mr. Potter, "but the surface indications are most encouraging, much more promising in fact than the indications on the surface at Cripple Creek. The entire Red River valley, from about five miles above Red River City down about 18 miles to Questa, is composed of gold bearing gravel and decomposed quartz, which will some day be worked as placer ground. This auriferous material is due to the erosions of thousands of years and seems to center at Red River City."

"Aside from the placer ground, the mineralized area shows the eruptive rocks in the form of great dikes of porphyry and phonite, and the best bodies of mineral take the form of contact veins with smooth porphyry and phonite walls, but my impression is that deep mining will disclose the fact that the veins have been forced up through the granite in association with the porphyry and phonite."

"The development work so far shows the ore to be largely of a hematite character of medium to low grade, but specimens of float and small seams have assayed into the thousands in gold. The

Royal makes the food pure, wholesome and delicious.



chief value of all the veins is gold, but some of them show silver, copper and lead.

"Since the final rejection of the land grant, and the throwing open of the district to entry as public land, new life has been infused into the camp and fresh activity is noticed on every hand. Every claim owner is making preparations for as much development work in the spring as possible."

"The chief need of the district," said Mr. Potter, "is capital for the proper development of the mines and for the erection of suitable mills and reduction works for the treatment of the ores. A railroad outlet is also much needed."

"In this connection I will say that negotiations are pending with the Denver & Rio Grande Railroad company tending toward the building of a bridge across the Rio Grande at a point between Volcano on the D. & R. G. road and Questa. After the building of this bridge a new road can be made, which will bring the district about 30 miles nearer than at present to a railroad connection, and this result in a large saving in the expense of hauling ores. It is possible that this bridge will be built strong enough to allow of its being used for railroad purposes, and, with proper development in the district, it is more than probable that the D. & R. G. road will be extended from some point on the main line to Questa."

"The present wagon road up the Red River canon is now being improved by the Red River Improvement & Mineral company, aided by the miners interested in the district, so that, when spring opens, there will be a first-class road into Red River City."

"The efforts of the Red River company during the winter will be mainly directed toward truthfully representing the possibilities of the Red River district to capitalists. Its promoters realize the needs and necessities of miners and will do all in their power to promote the general interests of the district."

In conclusion Mr. Potter paid a high tribute to Register Otto and Receiver Browne of the United States land office. Mr. W. H. Pope, assistant attorney of the United States court of private land claims, and the other United States officials with whom he had transacted business in Santa Fe. He said they all showed exceptional capacity and were disposed to afford every possible accommodation to strangers.

### Additional California Limited Service.

On account of the liberal patronage of the California Limited and to better accommodate the heavy travel to California incident to the winter season the Santa Fe route will increase this service, beginning January 17, from Chicago and St. Louis westbound, and January 23, from Los Angeles eastbound. Beginning with these dates the California Limited will run three times a week instead of semi-weekly, as at present. These trains will leave Santa Fe westbound at 8:50 a.m. on Monday, Wednesday and Friday, eastbound at 3:55 p.m. on Monday, Wednesday and Saturday.

H. S. LUTZ, Agent.

Santa Fe, N. M.

W. J. Black, G. A. P.

Topeka, Kas.

### Code of Civil Procedure.

Every practicing attorney in the territory should have a copy of the New Mexico Code of Civil Procedure, bound in separate form with alternate blank pages for annotations. The New Mexico Printing company has such an edition on sale at the following prices: Leatherette binding, \$1.25; full law sheep, \$2; flexible morocco, \$2.50.

## BARGAINS IN TAOS COUNTY.

For information regarding Taos county mines, placer or lode, write me. I have for sale, cheap, especially adapted to colonization, A No. 1 farming lands with perpetual water right; 3,000 acres unsurveyed government land.

W. GILLIS, TAOS.

## THE

## First National Bank

OF

Santa Fe, N. M.

UNITED STATES DESIGNATED DEPOSITARY

R. J. PALEN - President.  
J. H. VAUGHN - Cashier



# The Daily New Mexican

THE NEW MEXICAN PRINTING CO.

Entered as Second-Class matter at the Santa Fe Post Office.

## RATES OF SUBSCRIPTIONS.

Daily, per week, by carrier	25
Daily, per month, by carrier	1.00
Daily, per month, by mail	1.00
Daily, three months, by mail	2.90
Daily, six months, by mail	5.50
Daily, one year, by mail	10.00
Weekly, per month	35
Weekly, per quarter	1.00
Weekly, per six months	1.00
Weekly, per year	2.00

The New Mexican is the oldest newspaper in New Mexico. It is sent to every Postoffice in the Territory and has a large and growing circulation among the intelligent and progressive people of the southwest.

## ADVERTISING RATES.

Wanted: One cent a word each insertion. Local—Ten cents per line each insertion. Reading Local—Fifteen cents per line each insertion. Displayed—Two dollars a line, single column, per line in Daily. One dollar a line, single column, in either English or Spanish Weekly. Additional prices and particulars given on receipt of copy of matter to be inserted.

SATURDAY, JANUARY 8.

REPORTS from Ohio indicate that McLean-Bushnell "bar" is very much in evidence in Columbus these cool, wintry days.

If for no other reason than to keep the Hawaiian Islands out of other hands, the United States should annex them speedily.

It may take some little time before that little affair at Columbus will be settled. Here's hoping that it will be settled in Senator Hanna's favor.

A BANK in Kentucky, recently chartered, was opened with prayer. The average depositor, however, will prefer good and honest financing to praying by the officials of the institution.

A GEORGIA express agent recently stole \$15,000 from his company, and when captured had \$15,077 on his person. These blamed express companies are lucky devils indeed; they seem to have it all their own way.

THE people of this city and county should do something toward the passage of the bill for the permanent location of the capital here. They should not wait until the last moment and then rush about frantically, shouting at each other to do something.

THE average New England girl knows what she wants and is not slow in stating it. A Boston girl got her lover to propose last Christmas by giving him a silver mustache cup on which was inscribed in letters of gold, "Love the Giver." He took the hint promptly.

THE boards of county commissioners and collectors of taxes in some of the counties of the territory need prodding up with a sharp stick; in some instances, with the sharp stick of removal and of placing men into these offices who will do their duty and look after the prompt collection of taxes.

THE whole country seems satisfied that Mr. Eckels has been retired from the comptrollership of the currency. The man has been a good deal of a nuisance during the entire Cleveland administration and for some months under the present administration, and the people are glad that the nuisance has been abated.

THE first annual exhibition of the New Mexico Horticultural society held in this city last September was an unqualified success. Interest in this important matter should not be allowed to lag and work for the second exhibition, to be held in this city this year, cannot commence too soon.

Just think of it, in a very few months New Mexico will again be in the throes of a political campaign. The two great parties are already getting ready for the fray and the Pops are considering which way to jump and where to get the most boodle for their jump. Last year they jumped into the Democratic camp and landed the Democratic nominee for delegate to congress successfully. What they will do during the present year is as yet problematical.

If the postoffice inspectors for this territory would do their duty, the official heads of a few Democratic postmasters would fall by the wayside and that in short order. But the postoffice inspectors that have been doing this territory once in a while under the late unlamented Cleveland administration are not built that way. They have eyes, that do not see, and ears, that do not hear, when it comes to the short comings and derelictions of duty by Democratic postmasters in sunny New Mexico.

THE vast majority of the good people of the territory desire the capital located permanently in this city and the vexed question taken from territorial politics. During the past 14 years the capital removal agitation has been productive of nothing but corruption and boodling and has simply been the means of allowing some corrupt legislators and lobbyists to fleece the people of Santa Fe and Albuquerque. The passage of the bill, introduced by Delegate Ferguson, for the permanent location of the capital in this city and its becoming law, is greatly desired by the decent and honest voters by a large majority and would be a great step forward toward territorial advancement and the purifying of legislative doings.

A Word to the Board of Equalization. The territorial board of equalization meets on Monday. A fair and just valuation should be placed by that body upon all taxable property, a valuation just and fair alike to the commonwealth and to

the tax payers. It is a well known fact that live stock of all kinds has advanced greatly in value during the past year. In some cases the prices for which such stock can be sold being doubled. This fact should be taken into careful consideration and acted upon accordingly; merchants have been doing a very profitable business during the past 12 months and this should be duly considered. The property of corporations has advanced in value and this fact should be heeded. The people expect the board of equalization to do its duty fearlessly and fairly and the New Mexican hopes that the people will not be disappointed and that the best interests of the territory will be heeded by the board.

## Democratic Nonsense.

The eastern Silver-Democratic papers are promising a "silver fight" in congress, that will eclipse any and all previous efforts of the Democratic party to discredit the Republicans. These papers say that the old Stanley Matthews resolution, which was passed in 1878 and "now stands on the statutes as a dead letter," will be introduced in the senate and referred to the committee on finance, which favors the resolution, and will at once be reported favorably, and thus precipitate a row, and a number of senators who have been fencing on the money question will be smoked out.

The Matthews resolution declares that the policy of this government is to pay its debts in gold or silver at its option. Just how a fight can be gotten out of that resolution is somewhat difficult to understand. The resolution is now the law of the land and it is the option of the government to pay its obligations in gold. The party in power has heretofore constituted the government, and if President McKinley sees fit to continue gold payments he can do so without violating any law whatever. Unless the silver men are able to make the payment of government obligations in silver mandatory, the re-passing of the Matthews resolution will accomplish nothing, and effect no change in the present manner of doing business at the treasury. The talk of forcing a fight on the silver question by presenting the resolution mentioned is nonsense.

## The Independent Man in Politics.

Since the retirement of Mr. James H. Eckels from the office of the comptroller of the currency there has been considerable talk in the mugwump papers about the independent man in politics and the position he holds in affairs of that kind. The independent man in politics certainly occupies a peculiar position, which is best illustrated by a little story told by a prominent man in Illinois during the last campaign in that state.

He had become dissatisfied with the Republican party and joined the Democrats in search of reform, and from that party drifted into the ranks of the so-called independents. When that novelty wore off he returned to his first love and in relating his experience said: "I soon found that I was not big enough myself to make a party of much influence, but that did not bother me much until I began to look about for associates, and then I found that I was the most lonesome man in the whole country. Since I could accomplish nothing by myself, I concluded that if all that was the matter with me was a needed dose of reform, I had had a plenty and at once came back to the only political party that had ever done anything for the country."

That is about all there is to the situation. A man who imagines that he is an independent in politics usually finds himself very lonesome, he has no influence, can secure no change in existing conditions, and realizes that as a political party he is a failure in every respect.

The only way to secure reform in politics is to remain with the party that promises most in that way and work for a betterment of conditions through the strength of that party. Independence in politics is a very pretty theory, but it does not work out in practice.

## Actuated by Sordid Motives.

There is no longer any doubt entertained by a great majority of the senate concerning the advisability of annexing the Hawaiian Islands at the earliest possible moment. The condition of affairs in the Orient has demonstrated the wisdom of taking the islands under the stars and stripes and action on the treaty in the senate will be taken at an early day, but an opposition to the ratification of that treaty has sprung up that is a little difficult to understand.

That opposition comes from the senators from the western states and is caused by a fear that the sugar interests of their states will suffer from the competition Hawaiian sugar would offer. The admittance of the islands would remove the tariff on sugar sent to the United States from the islands, and the price of that article might possibly be forced down a few cents the hundred pounds. Another source of opposition comes from the men who have controlled the sugar lands on the islands under leases. Should the treaty be ratified the lands will pass from the control of the present holders through purchase, and leases could not be renewed upon as favorable terms as under the present condition of affairs.

The anti-annexation lobby at Washington is already at work. It is headed by the sugar kings of the islands, the sugar planters of the south and a few western senators and representatives. How successful they will be remains to be seen, but there is not much doubt of a failure. In this matter, as in pretty much everything else concerning the country, that reaches the legislative halls of the capitol, politics enters into it. If the eastern Republicans find that they can uphold the president in his Hawaiian policy and still not offend the western Republicans, the treaty will be ratified

without any trouble, but should the opposition be able to convince the friends of the measure that the western people will act ugly over it, there will be considerable difficulty in securing that ratification.

The popular supposition is that when a man is sent to congress, either as a representative or senator, that he is sent to look after the welfare of his own state particularly and of the nation in general, and incidentally to advance the interests of his party, but when matters of great moment come up which concern the safety of the country that all other considerations are to be laid aside; country first, local affairs and politics next. But in the matter of securing possession of the most important and strategic islands on our western coast many members of congress seem to be actuated by sordid motives wholly. Should a squabble arise over the treaty and the measure fail of ratification, Great Britain will not lose a moment in raising the British flag over the islands and at once proclaim to the world that by the grace of the Lord (and the foolishness of the Americans) the lands growing sugar cane, the admirable bays and stations on the coasts if the Hawaiian Islands were hers, and the Monroe doctrine might be hanged or fought for. The easiest and most satisfactory way out of the difficulty is to annex the islands to this country at once and settle the matter for all time.

## SHE SQUELCHED HIM.

She Had Married a Negro and Told Him Why It Happened.

"Uncle Josh" Perkins, a well known New England tin peddler, whose cheery face and well stocked cart are familiar features of the landscape between the Berkshire hills and Boston, tells the following good story, in which he for once in his life got the worst of the argument:

"In a certain town on my route lives a white woman whose husband is a decided brute, or, in other words, a full blooded African."

"I was in blissful ignorance of this somewhat mixed state of affairs, however, and one day I sold the lady in question a quantity of tinware from my cart, in payment for which she tendered me a \$5 bill. I happened to be a little short of change, and she said if I didn't mind stepping out back of the barn, where her husband was at work, he probably would change the bill for me."

"I didn't mind in the least, and I stepped out there, but presently came back with the bill in my hand and reported that I was unable to find her husband."

"Sure he wasn't there?" asked the woman.

"I'll take my oath to it, madam," said I glily. "I looked all around, and there was nobody out there but an old coon back in the lot a ways digging potatoes!"

"Coon, eh? I want you to understand that the gentleman to whom you thus refer is my lawful husband!" snapped she indignantly.

"Your husband?" I gasped in astonishment. "Surely you don't mean it?"

"She assured me that she certainly did mean it, so there was nothing left for me to do but apologize, and I promptly did so in my most elaborate and abject style. "I had things nicely smoothed over, and then like a blundering numbskull that I was I had to go to work and spoil it all by asking a question that popped into my head just then. Said I:

"Excuse me, madam, but just out of curiosity I'd like to know how an intelligent, good looking white woman like you came to marry a coon—I should say colored man?"

"Her eyes flashed fire for an instant; then a sarcastic twinkle crept into them, and after slowly looking me over from head to foot she replied:

"Well, mister, seeing you are so terribly curious about the matter, I'll tell you how it happened. When I was a young woman, I had my choice between marrying a tin peddler and a coon, as you express it, and I took the coon!"

"I've traveled around considerably in my time," concluded Uncle Josh, with a reminiscent sigh, "and I've crossed wits with everybody and anybody that came along, but I never was so completely and thoroughly squelched as I was on that occasion. I collected my bill and got my tin peddler's cart under motion without asking any more questions, you can bet."—Will S. Gidley in New York Sunday World.

## Dr. Johnson and the Widow.

In the book "Love Affairs of Some Famous Men" the story is recalled of Dr. Johnson and the widow whom he made his wife. He believed in the exchange of matrimonial confidence in regard to disagreeable matters, so he told her plainly that he was of humble extraction; that he had no money, and that one of his uncles had been hanged. The sensible woman responded cleverly and said she had more money than he, and that, though none of her relatives had been hanged, she had several who ought to be.

## When They See the Barber.

"Yes," admitted the dealer, "the price of hairdressers is a little high now, but it won't be long before there will be more hair thrown on the market than we know what to do with, and then we'll have the regular annual slump."

"What occasions it?"

"The close of the football season, of course."—Chicago Record.

## The Boy From the Family Flat.

Teacher—Willie, that is not the way to spell "emperor." You should not end the word with an "e-r." If you will notice, all titles denoting power and greatness—at least most of them—end with "e-r."

Willie—Oh, I see. Just like "janitor."—Indianapolis Journal.

After coughs and colds the germs of consumption often gain a foothold. Scott's Emulsion of Cod-liver Oil with Hypophosphites will not cure every case; but, if taken in time, it will cure many. Even when the disease is farther advanced, some remarkable cures are effected. In the most advanced stages it prolongs life, and makes the days far more comfortable. Everyone suffering from consumption needs this food tonic.

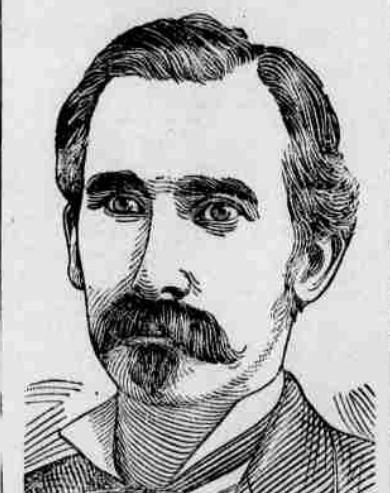
50c and \$1.00, all druggists. SCOTT & BOWNE, Chemists, New York.

# Cold Weather Brings Catarrh.

Though the disagreeable effects of Catarrh are felt all the year round, cold and disagreeable weather aggravates the disease and it is during the winter season that its severest form is felt. Each succeeding year seems to intensify the disease, so that it gradually fastens its hold upon the sufferer with a grasp that becomes firmer each season.

Catarrh often appears as only a cold at first, and is hardly noticed. But gradually the cold returns, and it is more difficult to cure, and stays longer than formerly. These symptoms can't be mistaken; they mark the first appearance of a disease that will develop in severity and stubbornness, and which it is impossible to cure with the local treatment of sprays, washes, and similar applications. Being a disease of the blood, only a blood remedy can have the slightest effect upon it. S.S.S. (Swift's Specific) is the only cure for Catarrh, because it is the only blood remedy which goes to the seat of all obstinate and deep-seated cases, and forces out the disease.

Mr. T. A. Williams, a leading merchant of Spartanburg, S. C., writes:



"For four years I had nasal catarrh, and though the case was a mild one at first it was not long until I noticed that it was gradually growing worse. Of course I was under treatment of first-class physicians, but their remedies were applied locally, and the disease seemed to be getting a firmer hold on me all the while. After spending so much money for treatment which proved to be all in vain, I was urged to try S.S.S. This remedy proved to be the right one, for it got at the disease, and a few bottles cured me perfectly. The cure was a permanent one, and I have not had a touch of the disease for many years. Swift's Specific is the only remedy that will have the slightest effect upon Catarrh."

Sufferers from Catarrh should get a start on the disease before the cold weather aggravates it. Those who have been relying upon local treatment will find winter weather is all that is needed to show that the disease is still with them. A course of S.S.S. (Swift's Specific) will prove all assertions made that it is the only cure for Catarrh; it goes to the cause of the trouble—the blood—and forces out all traces of the disease. Swift's Specific is the only remedy which reaches real obstinate blood diseases; it cures Catarrh, Rheumatism, Cancer, Contagious Blood Poison, Eczema, Scrofula, and in fact every other disease of the blood. It is guaranteed

## Purely Vegetable

and is the only blood remedy containing no potash, mercury or other mineral. Books mailed free to any address by the Swift Specific Company, Atlanta, Ga.

## HERD OF WHITE DEER.

Unusual Sight Reported by a Newport Sportsman in Maine.

A herd of white deer was seen near Kingman, Me., a few days ago, and every hunter for 20 miles around is now trying to get one of the animals. The herd was first seen by a Newport sportsman. For awhile he was so bewildered that he did not know what to do, for it may be that no man before him ever saw more than one white deer at a time in the Maine woods.

He succeeded in killing a big white buck weighing about 225 pounds, and he left on the next train for home, after having been here only three days. The buck was almost as white as snow. There was a patch of brown hair on his right side near the rump. When the man arrived in Bangor, he met a taxidermist, who bought the deer at a handsome price. The taxidermist said that he has mounted only one white deer in his life, and that was for a London man who wanted it to present to the British museum.



ELY'S CREAM BALM is a positive cure. Apply to the nostrils. It is quickly absorbed. 50 cents at Druggists or by mail; samples 10c. by mail. ELY BROTHERS, 59 Warren St., New York City.

**Homeseekers' Excursion.** The Santa Fe Route has arranged for a series of homeseekers' excursions, and tickets will be on sale from all points in Illinois, Iowa, Missouri, Kansas and Nebraska, to all points in New Mexico, Arizona and Texas. Dates of sale: January 18, February 1 and 15, March 1 and 15, April 5 and 19, tickets good for return passage, 21 days from date of issue. The rate will be one fare for the round trip, plus \$2. For further information regarding these low rates call on or address any agent of the Santa Fe Route.

H. S. LUTZ, Agent, Santa Fe, N. M., G. P. A., Topeka, Kas.

**The California Limited.** Takes you to Los Angeles in only 33 hours over the Santa Fe Route. Best route—best train—best time. Meals always good.

**Monogram Note Paper.** Monogram note paper is the correct thing for private correspondence. The New Mexican Printing Company can furnish the latest styles of this paper and at very low prices. Call and see samples.

## SOCIETIES.

Montezuma Lodge No. 1, A. F. & A. M. Regular communication first Monday in each month at Masonic Hall at 7:30 p. m. F. S. DAVIS, W. M. J. H. BRADY, Secretary.

Santa Fe Chapter No. 1, R. A. M. Regular convocation second Monday in each month at Masonic Hall at 7:30 p. m. JAMES B. BRADY, H. P. T. J. CURRAN, Secretary.

Santa Fe Commandery No. 1, K. T. Regular convocation fourth Monday in each month at Masonic Hall at 7:30 p. m. MAX. FROST, E. C. ADDISON WALKER, Recorder.

I. O. O. F.

PARADISE LODGE No. 2, I. O. O. F., meets every Thursday evening at Odd Fellows' hall; visiting patriarchy welcome. H. W. STEVENS, Recording Secretary.

CENTENNIAL ENCAMPMENT No. 3, I. O. O. F. Regular communication second and fourth Tuesday of each month at Odd Fellows' hall; visiting patriarchy welcome. J. L. ZIMMERMAN, Scribe.

MYRTLE REBEKAH LODGE, No. 2, I. O. O. F. Regular meeting first and third Tuesday of each month at Odd Fellows' hall. Visiting brothers and sisters welcome. THERESA NEWALL, Noble Grand. HATTIE WAGNER, Secretary.

AZTLAN LODGE No. 3, I. O. O. F., meets every Friday evening in Odd Fellows hall, San Francisco street. Visiting brothers welcome. A. P. HOOGL, Secretary.

K. O. F. P.

SANTA FE LODGE No. 2, K. O. F. P. Regular meeting every Tuesday evening at 7:30 o'clock at Castle hall. Visiting knights given a cordial welcome. WM. F. STROVER, C. C. LEE MUEHLKEISEN, K. of R. & S.

## INSURANCE.

S. E. LANKARD, Insurance Agent, Office: Griffin Building, Palace avenue. Represents the Equitable Life, Pacific Mutual, Accident, Royal Fire, Phoenix Fire, Manchester Fire, Sava Fire, London Lancashire Fire Association, New York Underwriters, Imperial, Lion, Providence, Washington Fire.

## PROFESSIONAL CARDS.

DENTISTS.

D. W. MANLEY, Dentist, Office, Southwest Corner of Plaza, over Fisher's Drug Store.

ATTORNEYS AT LAW.

MAX. FROST, Attorney at Law, Santa Fe, New Mexico.

GEO. W. KNABBEL, Office in Griffin Block. Collections and searching titles a specialty.

EDWARD L. BARTLETT, Lawyer, Santa Fe, New Mexico. Office in Catron Block.

CHAS. F. BASLEY, (Late Surveyor General.) Attorney at Law, Santa Fe, N. M. Land and mining business a specialty.

E. A. FISKE, Attorney and Counselor at Law, P. O. Box "P," Santa Fe, New Mexico. Practices in Supreme and all District Courts of New Mexico.

T. F. CONWAY, W. A. HAWKINS, CONWAY & HAWKINS, Attorneys and Counselors at Law, Silver City, New Mexico. Prompt attention given to all business entrusted to our care.

A. B. BERNHEAN, Attorney at Law, Practices in all Territorial Courts. Commissioner Court of Claims. Collections and title searching. Rooms 3 and 5 Spiegelberg Block.

THE SEVENTH Best Sugar Factory in the United States was erected at Eddy, New Mexico, in 1898, and made its first "campaign," beginning November 15th, 1898, and closing February 15th, 1899.

THE CONTENT OF "SUGAR in the beet" of the crop grown in the Eddy and Roswell sections of the valley has proven to be more uniformly high than any other part of the United States.

FORTUNATELY the land is blessed with just the fertility to produce high grade beets, and

MORE FORTUNATELY the Pecos Irrigation and Improvement Co. and the Roswell Land and Water Co. have an irrigation system of great magnitude, covering a vast body of the BEST SUGAR BEET lands on earth. The water is applied to the crop WHEN NEEDED.

THE SUN SHINES more hours in the day and more days in the year in Eddy and Chavez counties, New Mexico, than in any other section of the west.

THE SUGAR BOWL OF THE GREAT SOUTHWEST is the Rich Valley of the Rio Pecos. IN THE COUNTRIES OF EDDY AND CHAVES OF NEW MEXICO.

PECOS IRRIGATION AND IMPROVEMENT CO. EDDY, NEW MEXICO. OR ROSWELL LAND AND WATER CO. ROSWELL, NEW MEXICO.

# NEW MEXICAN PRINTING COMPANY

Sole Makers for New Mexico of the Celebrated Frey Patent Flat Opening Blank Book

MAXIMUM WORK AND RULING TO ORDER  
BOOK AND JOB PRINTING NEATLY  
AND PROMPTLY DONE

Address NEW MEXICAN PRINTING COMPANY, SANTA FE, NEW MEXICO.

# COAL & TRANSFER,

## LUMBER AND FEED.

All kinds of Rough and Finished Lumber; Texas Flooring at the lowest Market Price; Windows and Doors. Also carry on a general Transfer Business and deal in Hay and Grain.

## CHAS. W. DUDROW, Prop

194 separate analyses, chiefly carload lots, showed AN AVERAGE of 17.01 per cent sugar in beet; 84.1 per cent purity.

THIS REMARKABLE RESULT was accomplished by raw farmers, unacquainted with the culture of beet root, on new land and under very trying circumstances, as the factory was not assured until May, and a majority of the acreage was planted between JUNE 1st and AUGUST 10th.

GOOD SOIL makes the seed germinate.

WATER makes the plant grow.

SUNLIGHT puts the sugar in the BEET.

THE ONLY THING left to be desired that the Pecos Valley has not on hand in abundance is PEOPLE. We need thrifty farmers; 500 heads of families each on a 40-acre farm.

NO FAVORABLE terms or conditions of sale of beet and fruit lands were ever made.

WRITE for particulars.

PECOS IRRIGATION AND IMPROVEMENT CO. EDDY, NEW MEXICO. OR ROSWELL LAND AND WATER CO. ROSWELL, NEW MEXICO.

F. J. HAGERMAN, President, M. C. FAULKNER, Vice-President.



### The Sultan and Our Missionaries.

The Porte has demanded the recall of two American missionaries from the province of Aleppo, on the pretext that their mission is likely to cause disturbance. "The sick man of Europe," as it is unreasonably as his political health is feeble. As a bright contrast to his obstinacy and stupidity, the people of America are acknowledging far and wide the beneficence of the mission of Hostetter's Stomach Bitters, namely, to relieve and prevent malaria, rheumatism and kidney complaint, chronic dyspepsia, constipation and liver trouble. The nervous, the weak and the infirm derive unspeakable benefit from its use, and it greatly mitigates the weakness and infirmities which are specially incident to advancing years.

### Scared Him Out.

He asked the homely maiden to sing. At once she started to do it; But the song she sang was just the thing To make the gentleman rue it. For she raised her voice to a screech and cried: "Oh, tell me the old, old story!" Then he grabbed his hat and hence he fled, And left her alone in her glory.

### Thousands are Trying It.

In order to prove the great merit of Ely's Cream Balm, the most effective cure for Catarrh and Cold in Head, we have prepared a generous trial size for 10 cents. Get it of your druggist or send 10 cents to ELY BROS., 56 Warren St., N. Y. City.

I suffered from catarrh of the worst kind ever since a boy, and I never hoped for cure, but Ely's Cream Balm seems to do even that. Many acquaintances have used it with excellent results.—Oscar Ostrum, 45 Warren Ave., Chicago, Ill.

Ely's Cream Balm is the acknowledged cure for catarrh and colds, no cocaine, mercury nor any injurious drug. Price, 50 cents. At druggists or by mail.

### A. T. & S. F. Time Card.

Under the new schedule in effect December 13, first train leaves Santa Fe at 3:55 p. m., connecting at Lamy with train No. 1 at 4:55 p. m. No. 1 carries local passengers between Lamy and Albuquerque, and west of Albuquerque to California, this train also connects at Lamy with train No. 17, and carries passengers for Albuquerque and points south, connection is also made on this run with the Chicago Limited eastbound on Wednesdays and Saturdays, this train arrives at Santa Fe at 7 p. m.

Eastbound first train will leave Santa Fe at 9:40 p. m., returning arrive at Santa Fe at 11:45 p. m.; this train carries local passengers between El Paso and La Junta and has through sleepers to Kansas City; second train leaves Santa Fe at 12:15 a. m., this is a through train from California, and has through chair car and Pullman for Denver, Colorado Springs and Pueblo; No. 3 westbound California Limited leaves Santa Fe on Mondays and Friday at 8:50 a. m.; returning arrive at Santa Fe at 10:40; the Chicago and California Limited trains will only run twice a week each way until further notice.

### Timely Arrival.

They had mourned him as dead, but, like Enoch Arden—or the cat—he had come back.

His little wife sat on his knee, the joy shining in her eyes.

"And you are really glad I came back?" he asked.

"Glad?" said she, "Glad? I had just made up my mind to don a widow's outfit, but there was the loveliest picture hat, with bright ribbon all over it in spots, that I have been longing for, and now I can get it."

### MEDICAL TREATMENT ON TRIAL

To Any Reliable Man. Marvellous cures and one month's remedy of rare power will be sent on trial, without any advance payment, by the famous Ely Medical Co. in the treatment of men weak, broken, discouraged, from effects of excess, worry, overwork, etc. Heavy medicine secured, complete restoration or development of all robust conditions. The time of this offer is limited. No. 10, 11 & 12, Erie Medical Co., Buffalo, N. Y.

### RIO GRANDE & SANTA FE AND DENVER & RIO GRANDE R. R.

### The Scenic Route of the World.

### Time Table No. 40.

BASE ROUTE	WEST ROUTE
No. 40.	No. 40.
10:05 a. m. Lv. Santa Fe, Ar. 6:55 p. m.	12:35 p. m. Lv. Santa Fe, Ar. 8:25 p. m.
11:05 a. m. Lv. Santa Fe, Ar. 7:25 p. m.	1:35 p. m. Lv. Santa Fe, Ar. 9:25 p. m.
12:05 p. m. Lv. Santa Fe, Ar. 8:25 p. m.	2:35 p. m. Lv. Santa Fe, Ar. 10:25 p. m.
1:05 p. m. Lv. Santa Fe, Ar. 9:25 p. m.	3:35 p. m. Lv. Santa Fe, Ar. 11:25 p. m.
2:05 p. m. Lv. Santa Fe, Ar. 10:25 p. m.	4:35 p. m. Lv. Santa Fe, Ar. 12:25 a. m.
3:05 p. m. Lv. Santa Fe, Ar. 11:25 p. m.	5:35 p. m. Lv. Santa Fe, Ar. 1:25 a. m.
4:05 p. m. Lv. Santa Fe, Ar. 12:25 a. m.	6:35 p. m. Lv. Santa Fe, Ar. 2:25 a. m.
5:05 p. m. Lv. Santa Fe, Ar. 1:25 a. m.	7:35 p. m. Lv. Santa Fe, Ar. 3:25 a. m.
6:05 p. m. Lv. Santa Fe, Ar. 2:25 a. m.	8:35 p. m. Lv. Santa Fe, Ar. 4:25 a. m.
7:05 p. m. Lv. Santa Fe, Ar. 3:25 a. m.	9:35 p. m. Lv. Santa Fe, Ar. 5:25 a. m.
8:05 p. m. Lv. Santa Fe, Ar. 4:25 a. m.	10:35 p. m. Lv. Santa Fe, Ar. 6:25 a. m.
9:05 p. m. Lv. Santa Fe, Ar. 5:25 a. m.	11:35 p. m. Lv. Santa Fe, Ar. 7:25 a. m.
10:05 p. m. Lv. Santa Fe, Ar. 6:25 a. m.	12:35 a. m. Lv. Santa Fe, Ar. 8:25 a. m.
11:05 p. m. Lv. Santa Fe, Ar. 7:25 a. m.	1:35 a. m. Lv. Santa Fe, Ar. 9:25 a. m.
12:05 a. m. Lv. Santa Fe, Ar. 8:25 a. m.	2:35 a. m. Lv. Santa Fe, Ar. 10:25 a. m.
1:05 a. m. Lv. Santa Fe, Ar. 9:25 a. m.	3:35 a. m. Lv. Santa Fe, Ar. 11:25 a. m.
2:05 a. m. Lv. Santa Fe, Ar. 10:25 a. m.	4:35 a. m. Lv. Santa Fe, Ar. 12:25 p. m.
3:05 a. m. Lv. Santa Fe, Ar. 11:25 a. m.	5:35 a. m. Lv. Santa Fe, Ar. 1:25 p. m.
4:05 a. m. Lv. Santa Fe, Ar. 12:25 p. m.	6:35 a. m. Lv. Santa Fe, Ar. 2:25 p. m.
5:05 a. m. Lv. Santa Fe, Ar. 1:25 p. m.	7:35 a. m. Lv. Santa Fe, Ar. 3:25 p. m.
6:05 a. m. Lv. Santa Fe, Ar. 2:25 p. m.	8:35 a. m. Lv. Santa Fe, Ar. 4:25 p. m.
7:05 a. m. Lv. Santa Fe, Ar. 3:25 p. m.	9:35 a. m. Lv. Santa Fe, Ar. 5:25 p. m.
8:05 a. m. Lv. Santa Fe, Ar. 4:25 p. m.	10:35 a. m. Lv. Santa Fe, Ar. 6:25 p. m.
9:05 a. m. Lv. Santa Fe, Ar. 5:25 p. m.	11:35 a. m. Lv. Santa Fe, Ar. 7:25 p. m.
10:05 a. m. Lv. Santa Fe, Ar. 6:25 p. m.	12:35 a. m. Lv. Santa Fe, Ar. 8:25 p. m.
11:05 a. m. Lv. Santa Fe, Ar. 7:25 p. m.	1:35 p. m. Lv. Santa Fe, Ar. 9:25 p. m.
12:05 p. m. Lv. Santa Fe, Ar. 8:25 p. m.	2:35 p. m. Lv. Santa Fe, Ar. 10:25 p. m.
1:05 p. m. Lv. Santa Fe, Ar. 9:25 p. m.	3:35 p. m. Lv. Santa Fe, Ar. 11:25 p. m.
2:05 p. m. Lv. Santa Fe, Ar. 10:25 p. m.	4:35 p. m. Lv. Santa Fe, Ar. 12:25 a. m.
3:05 p. m. Lv. Santa Fe, Ar. 11:25 p. m.	5:35 p. m. Lv. Santa Fe, Ar. 1:25 a. m.
4:05 p. m. Lv. Santa Fe, Ar. 12:25 a. m.	6:35 p. m. Lv. Santa Fe, Ar. 2:25 a. m.
5:05 p. m. Lv. Santa Fe, Ar. 1:25 a. m.	7:35 p. m. Lv. Santa Fe, Ar. 3:25 a. m.
6:05 p. m. Lv. Santa Fe, Ar. 2:25 a. m.	8:35 p. m. Lv. Santa Fe, Ar. 4:25 a. m.
7:05 p. m. Lv. Santa Fe, Ar. 3:25 a. m.	9:35 p. m. Lv. Santa Fe, Ar. 5:25 a. m.
8:05 p. m. Lv. Santa Fe, Ar. 4:25 a. m.	10:35 p. m. Lv. Santa Fe, Ar. 6:25 a. m.
9:05 p. m. Lv. Santa Fe, Ar. 5:25 a. m.	11:35 p. m. Lv. Santa Fe, Ar. 7:25 a. m.
10:05 p. m. Lv. Santa Fe, Ar. 6:25 a. m.	12:35 a. m. Lv. Santa Fe, Ar. 8:25 a. m.
11:05 p. m. Lv. Santa Fe, Ar. 7:25 a. m.	1:35 a. m. Lv. Santa Fe, Ar. 9:25 a. m.
12:05 a. m. Lv. Santa Fe, Ar. 8:25 a. m.	2:35 a. m. Lv. Santa Fe, Ar. 10:25 a. m.
1:05 a. m. Lv. Santa Fe, Ar. 9:25 a. m.	3:35 a. m. Lv. Santa Fe, Ar. 11:25 a. m.
2:05 a. m. Lv. Santa Fe, Ar. 10:25 a. m.	4:35 a. m. Lv. Santa Fe, Ar. 12:25 p. m.
3:05 a. m. Lv. Santa Fe, Ar. 11:25 a. m.	5:35 a. m. Lv. Santa Fe, Ar. 1:25 p. m.
4:05 a. m. Lv. Santa Fe, Ar. 12:25 p. m.	6:35 a. m. Lv. Santa Fe, Ar. 2:25 p. m.
5:05 a. m. Lv. Santa Fe, Ar. 1:25 p. m.	7:35 a. m. Lv. Santa Fe, Ar. 3:25 p. m.
6:05 a. m. Lv. Santa Fe, Ar. 2:25 p. m.	8:35 a. m. Lv. Santa Fe, Ar. 4:25 p. m.
7:05 a. m. Lv. Santa Fe, Ar. 3:25 p. m.	9:35 a. m. Lv. Santa Fe, Ar. 5:25 p. m.
8:05 a. m. Lv. Santa Fe, Ar. 4:25 p. m.	10:35 a. m. Lv. Santa Fe, Ar. 6:25 p. m.
9:05 a. m. Lv. Santa Fe, Ar. 5:25 p. m.	11:35 a. m. Lv. Santa Fe, Ar. 7:25 p. m.
10:05 a. m. Lv. Santa Fe, Ar. 6:25 p. m.	12:35 a. m. Lv. Santa Fe, Ar. 8:25 p. m.
11:05 a. m. Lv. Santa Fe, Ar. 7:25 p. m.	1:35 p. m. Lv. Santa Fe, Ar. 9:25 p. m.
12:05 p. m. Lv. Santa Fe, Ar. 8:25 p. m.	2:35 p. m. Lv. Santa Fe, Ar. 10:25 p. m.
1:05 p. m. Lv. Santa Fe, Ar. 9:25 p. m.	3:35 p. m. Lv. Santa Fe, Ar. 11:25 p. m.
2:05 p. m. Lv. Santa Fe, Ar. 10:25 p. m.	4:35 p. m. Lv. Santa Fe, Ar. 12:25 a. m.
3:05 p. m. Lv. Santa Fe, Ar. 11:25 p. m.	5:35 p. m. Lv. Santa Fe, Ar. 1:25 a. m.
4:05 p. m. Lv. Santa Fe, Ar. 12:25 a. m.	6:35 p. m. Lv. Santa Fe, Ar. 2:25 a. m.
5:05 p. m. Lv. Santa Fe, Ar. 1:25 a. m.	7:35 p. m. Lv. Santa Fe, Ar. 3:25 a. m.
6:05 p. m. Lv. Santa Fe, Ar. 2:25 a. m.	8:35 p. m. Lv. Santa Fe, Ar. 4:25 a. m.
7:05 p. m. Lv. Santa Fe, Ar. 3:25 a. m.	9:35 p. m. Lv. Santa Fe, Ar. 5:25 a. m.
8:05 p. m. Lv. Santa Fe, Ar. 4:25 a. m.	10:35 p. m. Lv. Santa Fe, Ar. 6:25 a. m.
9:05 p. m. Lv. Santa Fe, Ar. 5:25 a. m.	11:35 p. m. Lv. Santa Fe, Ar. 7:25 a. m.
10:05 p. m. Lv. Santa Fe, Ar. 6:25 a. m.	12:35 a. m. Lv. Santa Fe, Ar. 8:25 a. m.
11:05 p. m. Lv. Santa Fe, Ar. 7:25 a. m.	1:35 a. m. Lv. Santa Fe, Ar. 9:25 a. m.
12:05 a. m. Lv. Santa Fe, Ar. 8:25 a. m.	2:35 a. m. Lv. Santa Fe, Ar. 10:25 a. m.
1:05 a. m. Lv. Santa Fe, Ar. 9:25 a. m.	3:35 a. m. Lv. Santa Fe, Ar. 11:25 a. m.
2:05 a. m. Lv. Santa Fe, Ar. 10:25 a. m.	4:35 a. m. Lv. Santa Fe, Ar. 12:25 p. m.
3:05 a. m. Lv. Santa Fe, Ar. 11:25 a. m.	5:35 a. m. Lv. Santa Fe, Ar. 1:25 p. m.
4:05 a. m. Lv. Santa Fe, Ar. 12:25 p. m.	6:35 a. m. Lv. Santa Fe, Ar. 2:25 p. m.
5:05 a. m. Lv. Santa Fe, Ar. 1:25 p. m.	7:35 a. m. Lv. Santa Fe, Ar. 3:25 p. m.
6:05 a. m. Lv. Santa Fe, Ar. 2:25 p. m.	8:35 a. m. Lv. Santa Fe, Ar. 4:25 p. m.
7:05 a. m. Lv. Santa Fe, Ar. 3:25 p. m.	9:35 a. m. Lv. Santa Fe, Ar. 5:25 p. m.
8:05 a. m. Lv. Santa Fe, Ar. 4:25 p. m.	10:35 a. m. Lv. Santa Fe, Ar. 6:25 p. m.
9:05 a. m. Lv. Santa Fe, Ar. 5:25 p. m.	11:35 a. m. Lv. Santa Fe, Ar. 7:25 p. m.
10:05 a. m. Lv. Santa Fe, Ar. 6:25 p. m.	12:35 a. m. Lv. Santa Fe, Ar. 8:25 p. m.
11:05 a. m. Lv. Santa Fe, Ar. 7:25 p. m.	1:35 p. m. Lv. Santa Fe, Ar. 9:25 p. m.
12:05 p. m. Lv. Santa Fe, Ar. 8:25 p. m.	2:35 p. m. Lv. Santa Fe, Ar. 10:25 p. m.
1:05 p. m. Lv. Santa Fe, Ar. 9:25 p. m.	3:35 p. m. Lv. Santa Fe, Ar. 11:25 p. m.
2:05 p. m. Lv. Santa Fe, Ar. 10:25 p. m.	4:35 p. m. Lv. Santa Fe, Ar. 12:25 a. m.
3:05 p. m. Lv. Santa Fe, Ar. 11:25 p. m.	5:35 p. m. Lv. Santa Fe, Ar. 1:25 a. m.
4:05 p. m. Lv. Santa Fe, Ar. 12:25 a. m.	6:35 p. m. Lv. Santa Fe, Ar. 2:25 a. m.
5:05 p. m. Lv. Santa Fe, Ar. 1:25 a. m.	7:35 p. m. Lv. Santa Fe, Ar. 3:25 a. m.
6:05 p. m. Lv. Santa Fe, Ar. 2:25 a. m.	8:35 p. m. Lv. Santa Fe, Ar. 4:25 a. m.
7:05 p. m. Lv. Santa Fe, Ar. 3:25 a. m.	9:35 p. m. Lv. Santa Fe, Ar. 5:25 a. m.
8:05 p. m. Lv. Santa Fe, Ar. 4:25 a. m.	10:35 p. m. Lv. Santa Fe, Ar. 6:25 a. m.
9:05 p. m. Lv. Santa Fe, Ar. 5:25 a. m.	11:35 p. m. Lv. Santa Fe, Ar. 7:25 a. m.
10:05 p. m. Lv. Santa Fe, Ar. 6:25 a. m.	12:35 a. m. Lv. Santa Fe, Ar. 8:25 a. m.
11:05 p. m. Lv. Santa Fe, Ar. 7:25 a. m.	1:35 a. m. Lv. Santa Fe, Ar. 9:25 a. m.
12:05 a. m. Lv. Santa Fe, Ar. 8:25 a. m.	2:35 a. m. Lv. Santa Fe, Ar. 10:25 a. m.
1:05 a. m. Lv. Santa Fe, Ar. 9:25 a. m.	3:35 a. m. Lv. Santa Fe, Ar. 11:25 a. m.
2:05 a. m. Lv. Santa Fe, Ar. 10:25 a. m.	4:35 a. m. Lv. Santa Fe, Ar. 12:25 p. m.
3:05 a. m. Lv. Santa Fe, Ar. 11:25 a. m.	5:35 a. m. Lv. Santa Fe, Ar. 1:25 p. m.
4:05 a. m. Lv. Santa Fe, Ar. 12:25 p. m.	6:35 a. m. Lv. Santa Fe, Ar. 2:25 p. m.
5:05 a. m. Lv. Santa Fe, Ar. 1:25 p. m.	7:35 a. m. Lv. Santa Fe, Ar. 3:25 p. m.
6:05 a. m. Lv. Santa Fe, Ar. 2:25 p. m.	8:35 a. m. Lv. Santa Fe, Ar. 4:25 p. m.
7:05 a. m. Lv. Santa Fe, Ar. 3:25 p. m.	9:35 a. m. Lv. Santa Fe, Ar. 5:25 p. m.
8:05 a. m. Lv. Santa Fe, Ar. 4:25 p. m.	10:35 a. m. Lv. Santa Fe, Ar. 6:25 p. m.
9:05 a. m. Lv. Santa Fe, Ar. 5:25 p. m.	11:35 a. m. Lv. Santa Fe, Ar. 7:25 p. m.
10:05 a. m. Lv. Santa Fe, Ar. 6:25 p. m.	12:35 a. m. Lv. Santa Fe, Ar. 8:25 p. m.
11:05 a. m. Lv. Santa Fe, Ar. 7:25 p. m.	1:35 p. m. Lv. Santa Fe, Ar. 9:25 p. m.
12:05 p. m. Lv. Santa Fe, Ar. 8:25 p. m.	2:35 p. m. Lv. Santa Fe, Ar. 10:25 p. m.
1:05 p. m. Lv. Santa Fe, Ar. 9:25 p. m.	3:35 p. m. Lv. Santa Fe, Ar. 11:25 p. m.
2:05 p. m. Lv. Santa Fe, Ar. 10:25 p. m.	4:35 p. m. Lv. Santa Fe, Ar. 12:25 a. m.
3:05 p. m. Lv. Santa Fe, Ar. 11:25 p. m.	5:35 p. m. Lv. Santa Fe, Ar. 1:25 a. m.
4:05 p. m. Lv. Santa Fe, Ar. 12:25 a. m.	6:35 p. m. Lv. Santa Fe, Ar. 2:25 a. m.
5:05 p. m. Lv. Santa Fe, Ar. 1:25 a. m.	7:35 p. m. Lv. Santa Fe, Ar. 3:25 a. m.
6:05 p. m. Lv. Santa Fe, Ar. 2:25 a. m.	8:35 p. m. Lv. Santa Fe, Ar. 4:25 a. m.
7:05 p. m. Lv. Santa Fe, Ar. 3:25 a. m.	9:35 p. m. Lv. Santa Fe, Ar. 5:25 a. m.
8:05 p. m. Lv. Santa Fe, Ar. 4:25 a. m.	10:35 p. m. Lv. Santa Fe, Ar. 6:25 a. m.
9:05 p. m. Lv. Santa Fe, Ar. 5:25 a. m.	11:35 p. m. Lv. Santa Fe, Ar. 7:25 a. m.
10:05 p. m. Lv. Santa Fe, Ar. 6:25 a. m.	12:35 a. m. Lv. Santa Fe, Ar. 8:25 a. m.
11:05 p. m. Lv. Santa Fe, Ar. 7:25 a. m.	1:35 a. m. Lv. Santa Fe, Ar. 9:25 a. m.
12:05 a. m. Lv. Santa Fe, Ar. 8:25 a. m.	2:35 a. m. Lv. Santa Fe, Ar. 10:25 a. m.
1:05 a. m. Lv. Santa Fe, Ar. 9:25 a. m.	3:35 a. m. Lv. Santa Fe, Ar. 11:25 a. m.
2:05 a. m. Lv. Santa Fe, Ar. 10:25 a. m.	4:35 a. m. Lv. Santa Fe, Ar. 12:25 p. m.
3:05 a. m. Lv. Santa Fe, Ar. 11:25 a. m.	5:35 a. m. Lv. Santa Fe, Ar. 1:25 p. m.
4:05 a. m. Lv. Santa Fe, Ar. 12:25 p. m.	6:35 a. m. Lv. Santa Fe, Ar. 2:25 p. m.
5:05 a. m. Lv. Santa Fe, Ar. 1:25 p. m.	7:35 a. m. Lv. Santa Fe, Ar. 3:25 p. m.
6:05 a. m. Lv. Santa Fe, Ar. 2:25 p. m.	8:35 a. m. Lv. Santa Fe, Ar. 4:25 p. m.
7:05 a. m. Lv. Santa Fe, Ar. 3:25 p. m.	9:35 a. m. Lv. Santa Fe, Ar. 5:25 p. m.
8:05 a. m. Lv. Santa Fe, Ar. 4:25 p. m.	10:35 a. m. Lv. Santa Fe, Ar. 6:25 p. m.
9:05 a. m. Lv. Santa Fe, Ar. 5:25 p. m.	11:35 a. m. Lv. Santa Fe, Ar. 7:25 p. m.
10:05 a. m. Lv. Santa Fe, Ar. 6:25 p. m.	12:35 a. m. Lv. Santa Fe, Ar. 8:25 p. m.
11:05 a. m. Lv. Santa Fe, Ar. 7:25 p. m.	1:35 p. m. Lv. Santa Fe, Ar. 9:25 p. m.
12:05 p. m. Lv. Santa Fe, Ar. 8:25 p. m.	2:35 p. m. Lv. Santa Fe, Ar. 10:25 p. m.
1:05 p. m. Lv. Santa Fe, Ar. 9:25 p. m.	3:35 p. m. Lv. Santa Fe, Ar. 11:25 p. m.
2:05 p. m. Lv. Santa Fe, Ar. 10:25 p. m.	4:35 p. m. Lv. Santa Fe, Ar. 12:25 a. m.
3:05 p. m. Lv. Santa Fe, Ar. 11:25 p. m.	5:35 p. m. Lv. Santa Fe, Ar. 1:25 a. m.
4:05 p. m. Lv. Santa Fe, Ar. 12:25 a. m.	6:35 p. m. Lv. Santa Fe, Ar. 2:25 a. m.
5:05 p. m. Lv. Santa Fe, Ar. 1:25 a. m.	7:35 p. m. Lv. Santa Fe, Ar. 3:25 a. m.
6:05 p. m. Lv. Santa Fe, Ar. 2:25 a. m.	8:35 p. m. Lv. Santa Fe, Ar. 4:25 a. m.
7:05 p. m. Lv. Santa Fe, Ar. 3:25 a. m.	9:35 p. m. Lv. Santa Fe, Ar. 5:25 a. m.
8:05 p. m. Lv. Santa Fe, Ar. 4:25 a. m.	10:35 p. m. Lv. Santa Fe, Ar. 6:25 a. m.
9:05 p. m. Lv. Santa Fe, Ar. 5:25 a. m.	11:35 p. m. Lv. Santa Fe, Ar. 7:25 a. m.
10:05 p. m. Lv. Santa Fe, Ar. 6:25 a. m.	12:35 a. m. Lv. Santa Fe, Ar. 8:25 a. m.
11:05 p. m. Lv. Santa Fe, Ar. 7:25 a. m.	1:35 a. m. Lv. Santa Fe, Ar. 9:25 a. m.
12:05 a. m. Lv. Santa Fe, Ar. 8:25 a. m.	2:35 a. m. Lv. Santa Fe, Ar. 10:25 a. m.
1:05 a. m. Lv. Santa Fe, Ar. 9:25 a. m.	3:35 a. m. Lv. Santa Fe, Ar. 11:25 a. m.
2:05 a. m. Lv. Santa Fe, Ar. 10:25 a. m.	4:35 a. m. Lv. Santa Fe, Ar. 12:25 p. m.
3:05 a. m. Lv. Santa Fe, Ar. 11:25 a. m.	5:35 a. m. Lv. Santa Fe, Ar. 1:25 p. m.
4:05 a. m. Lv. Santa Fe, Ar. 12:25 p. m.	6:35 a. m. Lv. Santa Fe, Ar. 2:25 p. m.
5:05 a. m. Lv. Santa Fe, Ar. 1:25 p. m.	7:35 a. m. Lv. Santa Fe, Ar. 3:25 p. m.
6:05 a. m. Lv. Santa Fe, Ar. 2:25 p. m.	8:35 a. m. Lv. Santa Fe, Ar. 4:25 p. m.
7:05 a. m. Lv. Santa Fe, Ar. 3:25 p. m.	9:35 a. m. Lv. Santa Fe, Ar. 5:25 p. m.
8:05 a. m. Lv. Santa Fe, Ar. 4:25 p. m.	10:35 a. m. Lv. Santa Fe, Ar. 6:25 p. m.
9:05 a. m. Lv. Santa Fe, Ar. 5:25 p. m.	11:35 a. m. Lv. Santa Fe, Ar. 7:25 p. m.
10:05 a. m. Lv. Santa Fe, Ar. 6:25 p. m.	12:35 a. m. Lv. Santa Fe, Ar. 8:25 p. m.
11:05 a. m. Lv. Santa Fe, Ar. 7:25 p. m.	1:35 p. m. Lv. Santa Fe, Ar. 9:25 p. m.
12:05 p. m. Lv. Santa Fe, Ar. 8:25 p. m.	2:35 p. m. Lv. Santa Fe, Ar. 10:25 p. m.
1:05 p. m. Lv. Santa Fe, Ar. 9:25 p. m.	3:35 p. m. Lv. Santa Fe, Ar. 11:25 p. m.
2:05 p. m. Lv. Santa Fe, Ar. 10:25 p. m.	4:35 p. m. Lv. Santa Fe, Ar. 12:25 a. m.
3:05 p. m. Lv. Santa Fe, Ar. 11:25 p. m.	5:35 p. m. Lv. Santa Fe, Ar. 1:25 a. m.
4:05 p. m. Lv. Santa Fe, Ar. 12:25 a. m.	6:35 p. m. Lv. Santa Fe, Ar. 2:25 a. m.
5:05 p. m. Lv. Santa Fe, Ar. 1:25 a. m.	7:35 p. m. Lv. Santa Fe, Ar. 3:25 a. m.
6:05 p. m. Lv. Santa Fe, Ar. 2:25 a. m.	8:35 p. m. Lv. Santa Fe, Ar. 4:25 a. m.
7:05 p. m. Lv. Santa Fe, Ar. 3:25 a. m.	9:35 p. m. Lv. Santa Fe, Ar. 5:25 a. m.
8:05 p. m. Lv. Santa Fe, Ar. 4:25 a. m.	10:35 p. m. Lv. Santa Fe, Ar. 6:25 a. m.
9:05 p. m. Lv. Santa Fe, Ar. 5:25 a. m.	11:35 p. m. Lv. Santa Fe, Ar. 7:25 a. m.
10:05 p. m. Lv. Santa Fe, Ar. 6:25 a. m.	12:35 a. m. Lv. Santa Fe, Ar. 8:25 a. m.
11:05 p. m. Lv. Santa Fe, Ar. 7:25 a. m.	1:35 a. m. Lv. Santa Fe, Ar. 9:25 a. m.
12:05 a. m. Lv. Santa Fe, Ar. 8:25 a. m.	2:35 a. m. Lv. Santa Fe, Ar. 10:25 a. m.
1:05 a. m. Lv. Santa Fe, Ar. 9:25 a. m.	3:35 a. m. Lv. Santa Fe, Ar. 11:25 a. m.
2:05 a. m. Lv. Santa Fe, Ar. 10:25 a. m.	4:35 a. m. Lv. Santa Fe, Ar. 12:25 p. m.
3:05 a. m. Lv. Santa Fe, Ar. 11:25 a. m.	5:35 a. m. Lv. Santa Fe, Ar. 1:25 p. m.
4:05 a. m. Lv. Santa Fe, Ar. 12:25 p. m.	6:35 a. m. Lv. Santa Fe, Ar. 2:25 p. m.
5:05 a. m. Lv. Santa Fe, Ar. 1:25 p. m.	7:35 a. m. Lv. Santa Fe, Ar. 3:25 p. m.
6:05 a. m. Lv. Santa Fe, Ar. 2:25 p. m.	8:35 a. m. Lv. Santa Fe, Ar. 4:25 p. m.
7:05 a. m. Lv. Santa Fe, Ar. 3:25 p. m.	9:35 a. m. Lv. Santa Fe, Ar. 5:25 p. m.
8:05 a. m. Lv. Santa Fe, Ar. 4:25 p. m.	10:35 a. m. Lv. Santa Fe, Ar. 6:25 p. m.
9:05 a. m. Lv. Santa Fe, Ar. 5:25 p. m.	11:35 a. m. Lv. Santa Fe, Ar. 7:25 p. m.
10:05 a. m. Lv. Santa Fe, Ar. 6:25 p. m.	12:35 a. m. Lv. Santa Fe, Ar. 8:25 p. m.
11:05 a. m. Lv. Santa Fe, Ar. 7:25 p. m.	1:35 p. m. Lv. Santa Fe, Ar. 9:25 p. m.
12:05 p. m. Lv. Santa Fe, Ar. 8:25 p. m.	2:35 p. m. Lv. Santa Fe, Ar. 10:25 p. m.
1:05 p. m. Lv. Santa Fe, Ar. 9:25 p. m.	3:35 p. m. Lv. Santa Fe, Ar. 11:25 p. m.
2:05 p. m. Lv. Santa Fe, Ar. 10:25 p. m.	4:35 p. m. Lv. Santa Fe, Ar. 12:25 a. m.
3:05 p. m. Lv. Santa Fe, Ar. 11:25 p. m.	5:35 p. m. Lv. Santa Fe, Ar. 1:25 a. m.
4:05 p. m. Lv. Santa Fe, Ar. 12:25 a. m.	6:35 p. m. Lv. Santa Fe, Ar. 2:25 a.



## A Year of Results . . .

Make 1898 a fruitful year in your purchase for the farm and home—a year of good results. Ours is a hardware store that supplies every hardware need, at the lowest range of prices. It's a safe and economical trading place for you, where results are certain.

On a basis of economy, we solicit your trade. Every item we sell you must be a value, or your money back.

# W. H. GOEBEL.

Diamond, Opal, Turquoise  
Settings a Specialty.

Watch Repairing  
Strictly First-Class.

## S. SPITZ,

—MANUFACTURER OF—

### MEXICAN • FILIGREE • JEWELRY

—AND DEALER IN—

### DIAMONDS, WATCHES, SILVERWARE, CUT GLASS, DECORATED CHINA.

Examines Eyes free of Charge for Prescription Lenses.

## H. S. KAUNE & CO.,

DEALER IN

### Staple - and - Fancy - Groceries

Fresh Oysters, Fish, Poultry of all Kinds  
Received Twice a Week.

# A. WALKER & CO.

—DEALERS IN—

### STAPLE & FANCY GROCERIES

## SANTA FE BAKERY.

TELEPHONE 53

The Sign of the

# RED LIGHT

WEST SIDE OF PLAZA.

CALLS ATTENTION TO

## "OUR PLACE."

Here business is conducted on Business Principles. Here can be obtained Strictly First Class Goods in the form of Liquid Refreshments and Cigars.

W. R. PRICE, Proprietor.

• WATCH WORK A SPECIALTY •

## J. R. HUDSON,

—THE PIONEER—

### MEXICAN FILIGREE JEWELER

—AND DEALER IN—

### Watches, Clocks, Optical Goods and Notions SEWING MACHINE SUPPLIES. SANTA FE NEW MEXICO

## HENRY KRICK,

SOLE AGENT FOR



Lemp's  
St. Louis  
Beer.

ALL KINDS OF  
MINERAL WATER

The trade supplied from one bottle to a carload. Mail orders promptly filled.

QUADALUPE ST. - SANTA FE

## The Exchange Hotel,

Best Located Hotel in City.

J. T. FORSHA, Prop.

\$1.50 PER DAY. \$2

Special rates by the Week or Month for Table Board, with or without room.

S. E. Corner of Plaza.

## SOCIAL CHRONICLES

C. H. Gildersleeve, clerk of the District court, is still in Denver.

P. E. Harroun and wife are in Albuquerque and may make that city their home for some time.

Hon. W. B. Childers, United States attorney, is expected back in Santa Fe from Socorro on Sunday night.

Mr. Alex. Berger, wife, two children and governess, are expected at the Sanatorium from El Paso in a week or so.

Mrs. Hildebrand and daughters, Misses Belle, Elsie and Jessie, are home from an extended visit with relatives in Albuquerque.

Hon. T. B. Catron, who has been indisposed and confined to his residence during the past week, is rapidly recovering.

Mr. Charles Catron, after spending the holiday vacation at his home in this city, returned to Stanford university the past week.

Captain C. E. Nordstrom, U. S. army, who has been very seriously ill during the past two weeks, is reported as being better.

Mr. Alexander Gustorf, a leading citizen, merchant and miner of Taos county, is in the city on a visit to his brother, Mr. Adolf Gustorf.

Miss Bronnecke, of Marshalltown, Ia., en route to Pasadena, Cal., for the winter, is in the city visiting her friend, Mrs. C. W. Dudson.

Hon. J. M. C. Chavez, of Rio Arriba county, who has been here for several days on business, returned yesterday evening to his home at Abiquiu.

Frank Cox, Esq., attorney for the Southern Pacific railroad for New Mexico and Arizona, is a guest at the Palace hotel, registering from Phoenix.

Mrs. E. W. Franz, of Albuquerque, and children, are here on a visit to Mr. and Mrs. Frank S. Davis, of Berkeley, Cal.

Mr. Arthur Hurt, who spent the holidays with his mother and sister in Santa Fe, has returned to Stanford University, in California, to resume his studies.

Mr. Escobedo Chacon, interpreter of the United States court of private land claims, will arrive at the sanatorium from Trinidad tonight.

Mrs. Sherwood, of Chicago, who has been at the Montezuma, Las Vegas Hot Springs, is a recent arrival at the sanatorium in Santa Fe.

Mr. Otto Gulterman, of New York, who made many friends in the city during his sojourn here several years ago, has returned to the sanatorium for an indefinite time.

A. C. Voorhees, Esq., a leading lawyer of northern New Mexico and a strong candidate for U. S. attorney for this district, registers at the Claire from Ratou.

He is here on legal business.

The many friends of that popular and bright young lady, Miss Caryl Palen, will be glad to learn that her condition today is somewhat improved. Miss Palen has been seriously ill for a week and more.

On Monday, January 3, a daughter was born to Mr. and Mrs. Royal Berry, of Taos. Mrs. Berry is the daughter of Mr. A. Scheureich, and there is great rejoicing in the family over the event.

Judge H. L. Waldo was in Chicago during the past week and is expected to arrive here during the coming week to attend to legal business for the Santa Fe railway, of which he is the solicitor for New Mexico.

Mr. and Mrs. J. W. Reynolds, of Las Vegas, who have been here several days on business, returned yesterday evening to their Las Vegas home, much to the regret of their many warm friends in this city.

Miss Sadie Holzman, of Las Vegas, has been in the city all week on a visit to her friend, Mrs. C. A. Spiess, and expects to remain here the major portion of the coming week. The young lady is the recipient of much social attention from her friends here.

The ladies of New Mexico will thoroughly enjoy the continued story entitled, "Neck or Nothing," which begins in today's NEW MEXICAN. This story will run in the Saturday issue of this paper for several weeks, and the opening chapters should be read in order that the plot may be understood.

Alfredo Lucero, son of Hon. and Mrs. J. Amado Lucero, of Espanola, was married today at Los Luceros in Rio Arriba county to Miss Agada Lucero, daughter of Mr. and Mrs. Lucas Lucero. The young couple will arrive this evening and spend the honeymoon in this city visiting with relatives.

Mrs. George H. Wallace entertained a few lady friends on Friday afternoon in honor of Miss Holzman, of Las Vegas. There were present Miss Holzman, Mrs. L. A. Hughes, Mrs. Money, Mrs. Spiess, Mrs. J. D. Hughes, Mrs. Rapp, Mrs. Willy, Mrs. Carson, Mrs. Shelby, the Misses Hildebrand, Hurt and Keller.

Mr. and Mrs. S. H. Snider and daughter have arrived in the city from Kansas City and will very likely take up their residence here. Mr. Snider expects to be engaged in mining ventures. Mr. Snider was superintendent of insurance of the state of Kansas several years.

Mrs. H. D. Money, wife of Senator Money, of Mississippi, will be at home in Washington at the Portner for the winter. Mrs. Money is not in the best of health at present and will not, in all probability, participate in many social functions, but she will be at home to her friends Thursdays after 3 o'clock. Mrs. Money has her daughter with her. Both ladies are well and favorably known in this city.

Santa Fe friends of the family have received during the past few days a memorial booklet issued in honor of young Harold Morley, whose tragic death in Doni's county last August, at the hands of unknown parties, was at the time noticed in these columns. The little book contains an engraving

of the handsome lad of 15, that he was, and is a worthy tribute to the memory of the bright and noble young life so cruelly and abruptly terminated.

The dance, which was to have been given at the Palace hotel on Tuesday evening, has been postponed indefinitely. Governor and Mrs. Otero entertained a few friends at dinner on Friday evening.

R. E. Twitchell, Esq., has been here all week on legal business, a guest at the Palace, and expects to remain here several days during the coming week, returning thence to his home in Las Vegas.

Last Tuesday evening a jolly skating party, consisting of Miss Keller, Miss Weir, Miss McKendie and Miss Hurt, Messrs. Hurt, Staab, Griffin, Taupert, C. E. Doll, Catron, Gortner and Dr. Brady, visited the ice ponds near the Santa Fe depot, and enjoyed themselves in cutting pigeon wings, figure eights and seeing constellations.

On Thursday evening Miss McKendie entertained a few friends at a "picnic" party. The first prize, offered to the most talented artist, was drawn for by Miss Weir, Miss Crawford, and Dr. Brady, the doctor proving by winning that he is possessed of more luck than talent. Refreshments were served by the charming hostess which were heartily enjoyed. Those present were the Misses Weir, Hurt, Jones, Keller, and Crawford; Messrs. Gortner, Staab, Catron, Hudson, Cummings and Dr. Brady.

The German Times, published in Berlin, Prussia, under date of December 11 last, contains the following item of interest to Santa Feans and New Mexicans: Mrs. Thomas B. Catron, from Santa Fe, N. M., U. S. A., her two sons and niece, Miss Genevieve Walz, have arrived in Berlin, and are temporarily settled at Pension Nebendahl, 105a, Potsdamer Strasse, where they will receive on Tuesday, Mrs. Catron, wife of ex-Congressman Catron, and her charming niece, should become great favorites in Anglo-Saxon social circles, for they are well skilled linguists and accomplished conversationalists. Few women have obtained a clearer insight into the great economic and social questions of the day than Mrs. Catron, who handles these weighty topics with the ease and polished skill of a veteran statesman. Miss Walz is a most versatile musician, who not alone composes, but is also an executant on the violin, piano and mandolin.

The Fifteen club met on December 30, at Mrs. Day's by invitation, it being guest day. Many visitors were present, and a charming program was rendered. Mrs. Thomas reading a paper on the prominent events of the past year; Mrs. Day sang, accompanied by her children on the pianoforte, violin and cello; Mrs. Rapp and Mrs. Philip Harroun contributed a pianoforte recital, and Miss Amy Gulliford a favorite song, the other members introducing appropriate selections from authors of repute. This week the club met on Thursday at Mrs. Gulliford's, under the presidency of Mrs. Coleman, being the first meeting of the new quarter. Each member read a selection from the Christmas numbers of the various magazines, and the meeting was adjourned to next Thursday at Mrs. Harroun's, when Mrs. Day will occupy the chair.

Death of Mrs. McPherson.

About 10 o'clock this morning, from her happy home in Santa Fe, Mrs. W. J. McPherson passed into the sweet summerland over beyond the dark veil that separates this life from the enduring one on the other side. Death was caused by acute pneumonia.

Mrs. McPherson was born in Freeport, Ill., 35 years ago, her maiden name being Bessie Hall, and she lived in this city for about 15 years. She was married to Mr. W. J. McPherson in August, 1895, and 19 days ago became the proud mother of a beautiful little girl. Besides the unspeakably bereaved husband and motherless little one, she leaves behind a mother and sister, and a brother, Will Hall, at Dolores, in this county, besides a host of sorrowing friends.

She was in all respects a most lovely and lovable woman, exceptionally bright, intelligent and amiable, and always eager to aid in lightening the burden and brightening the lives of all with whom she came in contact. Her death is universally deplored.

She has been a consistent and zealous member of the Presbyterian church for 20 years and was a communicant of the church of that denomination in this city.

The funeral will occur tomorrow afternoon at 3 o'clock from the Presbyterian church, conducted by Revs. W. Hayes Moore and G. S. Madden. The following pall bearers are requested to meet at the residence at 320 North Broadway: Messrs. R. J. Palen, N. B. Laughlin, Charles L. Bishop, H. B. Cartwright, Sherrard Coleman and W. H. Pope.

THAT GRAND JURY INVESTIGATION.

Several Subpoenas Sent Out and An Investigation Into Certain Rumored Charges Alleging Bribery of Members of the Legislature to Be Had.

As indicated in yesterday's NEW MEXICAN, so far about half a dozen persons have been summoned to appear before the U. S. grand jury. It is presumed in order to testify as to certain rumors that have floated about for months, charging that bribery and like practices were indulged in by interested parties during the session of the Thirty-second legislative assembly a year ago. It seems that the matter concerned in the charges is that money was used to influence votes on the bill for the creation of Washington county out of part of Grant county. It is reported, that so far F. C. Grayson, a Silver City banker, Joe E. Sheridan, editor of the Silver City Enterprise, W. E. Martin, territorial coal oil inspector and a member of the council of the last legislative assembly, Francisco Mera, also a member of the council of the Thirty-second legislative assembly, and W. E. Dame, of Cerrillos, ex-member of the house of the Thirty-first legislative assembly, have been summoned. There are said to be others.

Assistant U. S. Attorney Money was seen, but he said he knew nothing about it, neither did he know what U. S. attorney Childers had done in the premises. In the office of the U. S. marshal and in the clerk's office, the officials were very non-committal and reticent, but the New Mexican managed to get some information anyway. The witnesses named are expected to arrive in this city next week, when further developments will be reported.

To Cure a Cold in One Day  
Take Laxative Bromo Quinine Tablets.  
All druggists refund the money if it fails to cure. 25 cents. The genuine has L. B. Q. on each tablet.

## THE WHEELS OF JUSTICE.

Criminal Cases Occupy the Attention of the Territorial District Court—Cases Set in the United States Court.

The Territorial District court continues in session.

In the matter of the Territory vs. Teofilo Lujan, charged with cattle stealing, the jury returned a verdict at 9 o'clock last night acquitting the defendant.

The case of the Territory vs. Elias Chavez, charged with horse stealing, is now on trial before a jury.

The case of the Territory vs. Esteban Padilla, under indictment for murdering Faustino Ortiz, has been set for next Wednesday.

United States District Court.

The case of the United States vs. William McRae has been set for trial on Tuesday.

The case of the United States vs. Juan Cristobal Romero, incest, has been set for trial on Wednesday.

The grand jury continues to examine six or seven witnesses every day, but has so far made no report.

Santa Fe Opera House,  
THURSDAY EVENING, JAN. 13, 1898.

Return of the favorites—The Bittner Theatre company and the wonderful Edison Triograph. Admission, 35 and 50 cents; for sale at Ireland's Pharmacy.

MINOR CITY TOPICS.

The territorial board of equalization will meet in this city on Monday.

U. S. weather bureau forecast for New Mexico: Partly cloudy weather tonight and Sunday colder.

Deputy United States Marshal Baca, of Socorro, is in the city on official business, stopping at the Palace hotel.

Messrs. James and Alonzo Haynes, of Long Prairie, Ill., are in the city as healthseekers, stopping at the Exchange.

Dan Carter, an old timer and prominent citizen of Glorieta, is in the city on business. He stops at the Bon Ton.

Christ Larson and George Hayland, two hardy miners from Madrid, came in last night on business before the District court.

The marriage of Miss Mariana Rael and Mr. Florencio Martinez will be celebrated in the cathedral on the morning of January 12.

Maximiliano Valdez came in last night from Ojo Caliente with a bunch of fine cattle for Bischoff & Muller. He stopped at the Bon-Ton.

Messrs. S. H. Field, of St. Joseph, Mo.; Louis Hensch, of New York, and Max Kline, of Albuquerque, are traveling men registered at the Palace hotel.

The opening chapters of "Neck or Nothing" appears on the third page of this paper, and those who enjoy clean, realistic fiction should not fail to read it.

The New Mexico Supreme court is scheduled to meet at the court house in Santa Fe on Monday morning at 10 o'clock, for the purpose of handing down opinions.

Mr. F. A. Blake is here from Las Vegas on private business. He registers at the Bon-Ton.

If the weather is pleasant on tomorrow, Professor Perez' band will render the following program in the plaza, beginning at 2 o'clock:

March—The Hussars..... G. Rowley  
Lancers—College Songs..... Corey  
Waltz—Love's Dreamland..... Otto Roeder  
March—The Hussars..... G. Rowley  
Overture—Living Pictures..... Delbey  
Gavotte—Stephanie..... J. B. Claus  
Gallo—Breakfast..... J. B. Rayder

Joseph Confield, an experienced machinist who has been employed for the past six months on the Ortiz mine, came up last night to spend his vacation with his friends. He registers at the Bon-Ton.

Mr. Jasper F. Ortiz, of Chamita, has passed a satisfactory examination for appointment as deputy mineral surveyor and has received an appointment as such from Surveyor General Vance.

Placido Garcia, a prosperous merchant of Velarde, is here buying supplies for his store. He reports business for 1897 far in excess of that in 1896, that his section of country is prosperous and the people happy and contented.

Regular meeting of the W. B. T. & L. A. Monday at 2:30 p. m. All members are requested to be present and to be strictly on time, as at this meeting the annual reports will be given and election of officers will take place.

Uncle Daniel at Santa Fe, January 13, a roaring comedy presented by the Bittner Theatre company. New people, new specialties, new pictures, new plays at the same popular price, 35 and 50 cents. "Reserved seats on sale at Ireland's drug store."

Dr. A. P. Morrison, of Fort Worth, Tex., will preach at St. John's M. E. church tomorrow, both morning and evening. This is his first official visit to Santa Fe as superintendent of the New Mexico English mission of the Methodist Episcopal church.

The city authorities should make arrangements to have the streets sprinkled. A satisfactory arrangement, no doubt, could be made with the Santa Fe Water company to furnish a team and a driver for the sprinkling wagon and to attend to the matter.

If you want the fattest and choicest beef, veal, mutton, lamb and pork, go to the market of Bischoff & Muller.

The Bittner Theatre Company  
Will play a return engagement at the Santa Fe Opera House for three nights, commencing January 13, 1898.

Interestingly.

The readers of the NEW MEXICAN will find the serial story, "Neck or Nothing," the opening chapter of which appears in this paper, interesting. The author, Mrs. J. H. Walworth, is one of the foremost writers of fiction of the day, and her works are characterized by strength, realism and a thorough understanding of human nature.

Fresh vaccine, points and tubes just received at Fischer & Co.

## BOARD OF EQUALIZATION.

Meeting on Monday Next—Pointers Concerning the Board.

Mr. Frank Cox, of Phoenix, A. T., registers at the Palace. Mr. Cox is the attorney for the Southern Pacific railroad and will tell the board of equalization on Monday next, that the road he represents should pay as few taxes as possible, as it is a poor, hard working, modest, public spirited, down trodden corporation, that is not making a cent of money and is simply being run for the benefit and accommodation of the people of New Mexico, Arizona and California. Only this and nothing more.

The territorial board of equalization meets on Monday next; the following are the members: D. C. Hobart, Silver City, president; Thomas Hughes, Albuquerque, secretary; Romulo Martinez, Tierra Amarilla; George L. Ulrick, White Oaks, and J. S. Duncan, Las Vegas, members. The valuation of taxable property for the present year will be fixed by the board at this session.

Tax commissioners of the several railroads in the territory will put in their appearance in this city tomorrow and will lend charm, grace and dignity to the sessions of the board of equalization and incidentally will keep a weather eye open for the interests of the companies they have the honor and pleasure to represent.

Hon. Thomas Hughes, secretary of the board of equalization and editor of the Albuquerque Citizen, came up last night from Albuquerque and is registered at the Palace. He is here to attend the sessions of the board commencing next Monday.

To Cure a Cold in One Day  
Take Laxative Bromo Quinine Tablets.  
All druggists refund the money if it fails to cure. 25 cents. The genuine has L. B. Q. on each tablet.

Table Board.

For best table board at \$5 per week apply to Mrs. Bush, first house south of Palace hotel.

Church Announcements.

The services at the First Presbyterian church tomorrow will be as follows: At 11 o'clock a. m., preaching by the pastor; Sabbath school at 9:45 a. m.; Junior Endeavor at 3 p. m.; Senior Endeavor at 4 p. m.; no evening service. A cordial welcome to all. Strangers kindly greeted. W. Hayes Moore, pastor.

The services at the Cathedral tomorrow, the 1st Sunday after Epiphany, will be as follows: Mass at 7 a. m.; second mass at 8:30 a. m.; third mass at 9:30 a. m., sermon in English; fourth mass at 10:30 a. m., sermon in Spanish; at 4 p. m., vespers and benediction.

German Lutheran service tomorrow, 1st Sunday after Epiphany, will be held at 11 a. m. at the residence of Mrs. G. D. Koch, lower San Francisco street, to which all Germans are cordially invited. Sunday school at 10 o'clock. Dr. G. A. Neef, pastor.

Services at St. John's M. E. church will be as follows: From 10 to 11 a. m. Sunday school; at 11 a. m. Dr. A. P. Morrison, recently appointed to succeed Dr. A. A. Gee, will preach, after which the sacrament of the Lord's supper will be administered; at 2:30 p. m. the Junior League will hold its regular session; at 6:30 p. m. the Epworth League will convene; at 7:30 p. m. Dr. Morrison will deliver a discourse. To the above services all are cordially invited. Strangers and visitors especially welcomed. G. S. Madden, pastor.

The Episcopal Church of the Holy Faith: Divine service as usual at 11 o'clock tomorrow, the 1st Sunday after the Epiphany. Sermon will be with reference to the strengthening of faith in those who are thinking of the duty of confessing Christ. The offerings will be for foreign missions, which, owing to events now transpiring in the east, are of great interest. Seats in this church are free and open to all who, whether strangers, temporary sojourners or citizens, will be cordially welcomed. Sunday school at 10 o'clock in which it is hoped both teachers and scholars will be prompt and faithful in their attendance and work. J. L. Gay, priest in charge.

"Fresh Lobsters, Shrimps."

Black bass, catfish, frog legs, oysters and everything else in the market at the Bon-Ton.

Strictly First Class.

Housekeepers and restaurant managers can save money by purchasing meats, fish and oysters from Bischoff & Muller. Only strictly first-class meats sold.

To the Ladies.

I am prepared to begin massage treatments Monday afternoon, after which time I will give the entire day, beginning at 9 a. m. until 9 p. m. Ladies will call at room 19, Sanatorium. My specialties are removing all facial blemishes such as tan, freckles, moth patch, pimples, blackheads and superfluous hair. Wrinkles removed by development of muscle tissue and increase of flesh; nothing easier when done properly. Hair with all its diseases carefully and effectually treated so that dandruff, dryness of scalp, or falling out of hair is at once remedied. Shampoo is my specialty; vapor baths, delightful, purifying to the complexion and invigorating; massage for nervous diseases, constipation, gas troubles and insomnia, as well as paralytic affliction. My prices are very reasonable. I shall not be here longer than the first of February. MADAM L. L. WYATT

Six-room houses to rent during the winter from \$5 to \$6 per month. Mrs. L. A. Harvey, Johnson St.

To Rent—Unfurnished.

House of four rooms, independent entrance and exclusive placita, recently occupied by Mrs. Long. Also three extra large rooms, entrance on placita. Both have sunny exposures. L. B. Prince.

Fischer & Co. receive fresh vaccine every week.

Just received at Scheureich's for the holidays: G. Mumma's Ex. Dry, Chateau De Corbiac, Wachenheimer and other imported wines.

APPLES FOR SALE in any quantity; 25 barrels 3 year old sugar. Address Ed Miller, Santa Fe, N. M., P. O. box 32.

Application for Pardon.

Manuel Artiga y Chavez, of Gray, Lincoln county, has been in the city several days and has presented to the governor a petition for the pardon of Abraham Miller, of Lincoln county, who is serving a sentence in the territorial penitentiary for cattle stealing. He filed the papers in the executive office and left yesterday for his home, hoping for favorable action on the part of Governor Otero in the case, as it is claimed that the sentence in the case is beyond all reason and too great a punishment for the crime.

## BOARD OF EQUALIZATION.

Meeting on Monday Next—Pointers Concerning the Board.

Mr. Frank Cox, of Phoenix, A. T., registers at the Palace. Mr. Cox is the attorney for the Southern Pacific railroad and will tell the board of equalization on Monday next, that the road he represents should pay as few taxes as possible, as it is a poor, hard working, modest, public spirited, down trodden corporation, that is not making a cent of money and is simply being run for the benefit and accommodation of the people of New Mexico, Arizona and California. Only this and nothing more.

The territorial board of equalization meets on Monday next; the following are the members: D. C. Hobart, Silver City, president; Thomas Hughes, Albuquerque, secretary; Romulo Martinez, Tierra Amarilla; George L. Ulrick, White Oaks, and J. S. Duncan, Las Vegas, members. The valuation of taxable property for the present year will be fixed by the board at this session.

Tax commissioners of the several railroads in the territory will put in their appearance in this city tomorrow and will lend charm, grace and dignity to the sessions of the board of equalization and incidentally will keep a weather eye open for the interests of the companies they have the honor and pleasure to represent.

Hon. Thomas Hughes, secretary of the board of equalization and editor of the Albuquerque Citizen, came up last night from Albuquerque and is registered at the Palace. He is here to attend the sessions of the board commencing next Monday.

To Cure a Cold in One Day  
Take Laxative Bromo Quinine Tablets.  
All druggists refund the money if it fails to cure. 25 cents. The genuine has L. B. Q. on each tablet.

New Mexico Pioneers.

There will be regular meeting of the New Mexico pioneers on Monday next, January 10, at 4 p. m., at the office of the secretary. This is an important meeting, and a general attendance of members is requested.

FRANCISCO CHAVEZ,  
L. BRADFORD PRINCE, GOVERNOR,  
Secretary.

Oysters and Fish.

Fresh oysters and fish received every Friday by Bischoff & Muller. Prices at the lowest possible notch.

The Weather.

The weather yesterday was generally cloudy and threatening with light variable winds. The maximum temperature was 43 and the minimum 28 degrees. The mean relative humidity was 74 per cent. Partly cloudy weather is indicated for tonight and Sunday, colder.

The best Kansas City meats and all kinds of game in season at the Bon Ton.

At the Hotels.

At the Claire: A. C. Voorhees, Raton.

At the Exchange: James Haynes, Alonzo Haynes, Long Prairie, Wayne county, Ill.

At the Palace: S. H. Fields, St. Joe; Frank Cox, Phoenix, A. T.; A. Simon, Kansas City; Thos. Hughes, Albuquerque; C. Baca, Socorro; Louis Hensch, New York; Max Kline, Albuquerque.

At the Bon-Ton: Donaciano Garcia, Pantallon Madrid; Salomon Garcia, Santa Cruz; Richard Richardson, Antioch; Jose Garcia, San Cristobal; Pedro Montoya, Galisteo; F. A. Blake, Las Vegas; Marcos Gonzales, Maximiano Valdez; Ojo Caliente; P. Fitzsimmons, Silverton; Jos. Canfield, Ortiz; Christ Larsen, Oro, Hayland, Madrid; Dan Carter, Glorieta.

Kansas City Meats.

Bischoff & Muller handle a full line of Kansas City meats, including sausage. Give them a trial.

Kodaks and kodak supplies at Fischer & Co.

Seligman Bros. . .

The pioneer dry goods and clothing merchants of Santa Fe, always lead all competitors in their line of business.

For example, they now come to the front as the formally authorized agents for Santa Fe and New Mexico of

C. G. LEOPOLD,  
The Famous Chicago Tailor,  
who carries the finest and completest stock of imported and domestic goods that can be purchased; employs only artists in his cutting department, and hence every garment that comes from his