

12-31-1896

Santa Fe Daily New Mexican, 12-31-1896

New Mexican Printing Company

Follow this and additional works at: https://digitalrepository.unm.edu/sfnm_news

Recommended Citation

New Mexican Printing Company. "Santa Fe Daily New Mexican, 12-31-1896." (1896). https://digitalrepository.unm.edu/sfnm_news/5506

This Newspaper is brought to you for free and open access by the New Mexico Historical Newspapers at UNM Digital Repository. It has been accepted for inclusion in Santa Fe New Mexican, 1883-1913 by an authorized administrator of UNM Digital Repository. For more information, please contact disc@unm.edu.

The Daily New Mexican

BY THE NEW MEXICAN PRINTING CO.

Entered as Second-Class matter at the Santa Fe Post Office.

RATES OF SUBSCRIPTIONS.

Daily, per week, by carrier	\$1.00
Daily, per month, by carrier	\$3.00
Daily, per month, by mail	\$3.50
Daily, three months, by mail	\$10.00
Daily, six months, by mail	\$19.00
Daily, one year, by mail	\$35.00
Weekly, per month	\$2.00
Weekly, per quarter	\$5.00
Weekly, per six months	\$9.00
Weekly, per year	\$17.00

All contracts and bills for advertising payable monthly.

All communications intended for publication must be accompanied by the writer's name and address—no publication without evidence of good faith, and should be addressed to The Editor, Letters pertaining to business should be addressed to the New Mexican Printing Co., Santa Fe, New Mexico.

The New Mexican is the oldest newspaper in New Mexico. It is sent to every Postoffice in the Territory and has a large and growing circulation among the intelligent and progressive people of the southwest.

Notice is hereby given that orders given by employees upon the New Mexican Printing Co., will not be honored unless previously authorized by the business manager.

Notice.

Requests for back numbers of the New Mexican, must state date wanted, or they will receive no attention.

Advertising Rates.

Wanted—One cent a word each insertion. Local—Ten cents per line each insertion. Leading Local—Preferred position—single column, per month in Daily, One dollar an inch, single column, in either English or Spanish Weekly. Additional prices and particulars given on receipt of copy of matter to be inserted. Prices vary according to amount of matter, length of time to run, position, number of changes, etc. One copy only of each paper in which an ad. appears will be sent free. Wood base electrodes accepted for less than \$1 net, per month. No reduction in price made for "every other day" advertisements.

THURSDAY, DECEMBER 31.

The beet sugar industry is certain to prove of great value to New Mexico. It should be fostered and encouraged in all its branches.

The New Mexican elsewhere in this issue prints an exhaustive article on the subject of the wool tariff in the shape of a letter addressed to Chairman Nelson Dingley, of the ways and means committee of the 54th congress, by Hon. Geo. H. Wallace, now a resident of this territory. The letter deals with a topic of intense interest to the people of the southwest, and it will well repay careful perusal, for Mr. Wallace is an acknowledged authority on the subject, having made it a life study and enjoyed exceptional advantages for probing deep into its complications.

THE SUN'S FAKE SCHEME.

So the New York Sun has again revived its old scheme for making one state out of New Mexico, Arizona and Oklahoma. The Sun tried this fake on Delegate Joseph several years ago, but suffered a rebuff that ought to have taught it a lesson. Evidently Grandma Deas, like a great many effete easterners doesn't know how big this western country is. Why just look at Congressman John C. Bell's district up in southern Colorado. This district is equal in area to the states of New York, Massachusetts, Connecticut and New Jersey. The Sun should send out a reliable representative and become acquainted with the "bigness" of the west before it makes any further suggestions on statehood.

SOMETHING MAY HAPPEN.

If it should happen that the A. & P. road gets away from the A. T. & S. F., and the latter carries out its threat to build a new line to the Pacific, at a cost of some \$6,000,000, the route adopted will doubtless not be westward from Magdalena, as the Denver Times suggests, but from Whitewater station, twelve miles below Silver City. That would take the new line through the Gila valley and past the San Carlos reservation coal deposits, soon to be thrown open, and send it through the very heart of Arizona over a grade that would enable the Santa Fe to make as good time to the coast as any competing line while at the same time hauling nearly double the number of freight cars per train that the A. & P. now handles. If all signs do not fail some highly interesting moves on the New Mexico and Arizona railroad chess board will be made within the next few months.

A ROTTEN SYSTEM.

As the result of one day of panic on the New York stock exchange, resulting from the unanimous action of the senate committee favoring the acknowledgment of Cuba, twenty-three of the active speculative stocks shrank in value \$29,495,528.

Why this should be so, with President Cleveland standing in the breach between Uncle Sam and Spain, is certainly most curious, but it is much more remarkable when one considers where the heaviest declines occurred. The A. T. & S. F. stock fell in value the enormous sum of \$4,012,290; Chicago, Milwaukee & St. Paul railway stock lost \$2,160,000, and Western Union telegraphic stock tumbled \$2,265,097. On the other hand the stock of the sugar and tobacco trusts, both of which might reasonably be expected to feel the effects of a war scare, shrank less than \$2,000,000. Nothing could more forcibly illustrate the rotten financial methods in vogue on Wall street and exemplify the ease with which the speculative shysters can handle the business interests of this great nation.

NEW MEXICO'S GOLD AND SILVER OUTPUT. According to the carefully prepared figures of John J. Valentine, president of the Wells Fargo Express company, New Mexico last year produced a total of \$2,499,586 in gold and silver, besides probably \$750,000 worth of copper and lead.

Mr. Valentine's figures for 1896 were in detail as follows: Gold—dust and bullion—shipped by express, \$256,655; shipped by freight and other means of transportation, \$1,321,300; silver bullion—shipped by express, \$293,881; shipped by freight and other means, \$627,710.

All the information at the command of the New Mexican indicates that New Mexico's output of the precious metals during 1896 exceeded that of 1895 by fully 20 per cent. Using Mr. Valentine's conservative figures for the previous year as a basis, it thus appears that this territory has produced \$2,999,503 in gold and silver during the year that closes to-day. Figures on the lead and copper output of the territory for 1896 are not accessible, but the indications are that they will much exceed those of 1895.

The increase noted has been mainly in the form of gold and should be credited chiefly to Grant and Sierra counties in southwestern New Mexico, to the Cochiti mining district forty miles southwest of Santa Fe, to the gold mines in south Santa Fe county, to the Elizabethtown, Baldy, La Belle and Amizett gold camps of Colfax and Taos counties. These camps have all shown a marked increase in their output of the precious yellow stuff in the course of ordinary development work and promise a great deal more than to double their yellow output during 1897.

PRESS COMMENT.

Score One for New Mexico.

New Mexico does not squabble over reservoir matters and waste words in sectional squabbles, as we do in Colorado. A train load of cement is now arriving for the construction of the great Rincon dam, and teams were last week leaving Albuquerque to begin on the Selden dam. Then there is the great Rio Grande river dam to be started soon. How they manage these things it would be hard to tell, but they do it.—Pueblo Chieftain.

New Mexico's Mines.

A boom in the mining districts of northern New Mexico is anticipated during the coming year. A large number of new companies have been organized lately for the purpose of operating gold properties in Rio Arriba and Taos counties. This means that money will be freely spent to develop the rich mines of this district, which undoubtedly will make a fine showing during the next twelve months.—San Juan Index.

A Kind Word for Kelly.

Petitions are being extensively signed through this district for the appointment of Hon. W. E. Kelly to the bench of the fifth judicial district. The Advertiser does not believe in the political heresies advocated by Mr. Kelly, but aside from his politics believes him to be a good man; and it is extremely doubtful if a man can be found who can say one word against him. He has had a long experience in law, is clear-minded, recognized wherever known as strictly honest and impartial. Whatever can be said against his politics can not be said against the man, and, as long as it looks like a Republican, men with records as clear as Judge Kelly's are preferable to taking chances on a new comer. Saying a few good words for a deserving candidate must not be understood as committing the Advertiser, as we are holding our only original and absolutely genuine candidate in reserve.—Socorro Advertiser.

Election Reform.

The Enterprise is informed that Representative Cristman, of this county, will make a special effort to secure the enactment of a law defining and punishing bribery in elections, limiting the amount which candidates may spend and require an itemized statement under oath of such expenditure. It is his intention to take the Arizona law on this subject as a model. If Mr. Cristman will include in his bill a provision for sending to the penitentiary the alleged "workers" who claim to control from five to fifty voters, whose votes they offer to deliver for so much cash, he will have the best wishes and earnest efforts of all good citizens in behalf of its passage. Any man who claims to control any vote other than his own and offers to sell such vote ought to be disfranchised as well as imprisoned.—Silver City Enterprise.

Suggestions in Order.

Sterling good men as a rule will constitute the next legislative assembly. Suggestions from Judge John Y. Hewitt are now in order.—New Mexican. We are not quite sure as to whether the above is intended to intimate that the editor of the Eagle has been in the habit of offering suggestions to the legislative assemblies of New Mexico, or has reference to criticisms made by this paper on our statutes, in connection with the discussion of the question of statehood. But, inasmuch as no suggestions have ever been submitted by the writer to former legislatures relative to laws to be enacted, we presume that our esteemed contemporary was desirous to have the laws so amended as to satisfy the Eagle and induce it to support the proposed admission of New Mexico into the Union of states. We have indicated, elsewhere, generally, what we think the assembly should do next winter, and for the benefit of the able daily at the capital, we shall promise to add more specific "suggestions" from time to time during the next few months. As a feeler we would suggest that the first act of the incoming Democratic legislature might well be the repeal of all, or nearly all, of the present laws, and the second, the substitution of something coherent and free from the usual jobbery which has characterized the former legislation of Republican assemblies.—White Oaks Eagle.

Santa Fe Route-California Limited. Leave Chicago 6:00 p. m. Wednesdays and Saturdays, Kansas City 9:50 a. m., and Denver, 5:40 p. m. Thursdays and Sundays, reaching Los Angeles in 72 hours and San Diego in 76 hours from Chicago. Connecting train from San Francisco via Mohave. Returns Mondays and Thursdays.

Equipment of superb vestibuled Pullman palace sleepers, buffet smoking car and dining car. Most luxurious service via any line. Express train carrying palace and tourist sleepers leaves Chicago and Kansas City daily for California.

Inquire of local agent or G. T. Nicholson, G. P. A., A. T. & S. F. R'y., Chicago.

Illustrated Special Edition New Mexican

Now on sale. Secure a copy and send it to your friend at the east. Price 10 cents; ready for mailing 11 cents.

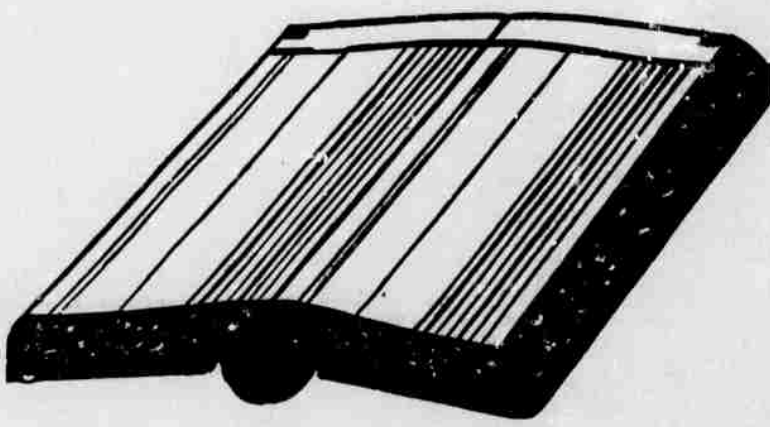
We call especial attention to our celebrated Frey's patent flat opening blank book

We make them in all manner of styles.

We bind them in any style you wish.

We rule them to order

We are the Sole Makers



JOB WORK

Of all kinds done with neatness and despatch. We carry a large and complete line of commercial stationery, consisting of wedding cards, business cards, programs, etc.

BOOK WORK

We are the best equipped establishment in the whole southwest for this line of work, and our unequalled facilities enable us to turn out work at the lowest possible figures.

LEGAL BLANKS

We carry a full and complete line of all Legal Blank, including those required by the Brand Law enacted by the last legislature.

NEW MEXICAN PRINTING COMPANY.

Legal Notice.

In the probate court, Santa Fe county. In the matter of the last will and testament of Valentine S. Shelby, deceased. To whom it may concern: I do hereby give notice pursuant to statute that I have fixed Monday, January 4, 1897, at the hour of 10 o'clock in the forenoon, being the regular session of the above entitled court, for the proving of the last will and testament of Valentine S. Shelby, deceased, lately a resident of the city of Santa Fe, in the county of Santa Fe, New Mexico.

Attest: A. P. HILL, Clerk. Dated Santa Fe, N. M., Dec. 7, 1896.

Aviso Legal.

En la corte de pruebas del condado de Santa Fe. En la materia de la ultima voluntad de Valentine S. Shelby, finado. A quien concierne: Por estas doy noticia en cumplimiento al estado de que he fijado al Lunes, Enero 4 de 1897, a la hora de las 10 de la mañana, siendo la sesion regular de la arriba intitulada corte, para la aprobacion de la ultima voluntad y testamento de Valentine S. Shelby, finado, ultimamente residente de la ciudad de Santa Fe, en el condado de Santa Fe, N. M.

Atestiguado: Juez de Probacia, Condado de Santa Fe, N. M. A. P. HILL, Escribano. Fechado Santa Fe, N. M., Diciembre 7 de 1896.

METEOROLOGICAL.

Time of observation	Barometer	Thermometer	Direction of wind	Force of wind	State of sky	Amount of precipitation
5:00 a. m.	30.1	32	SW	3	Cloudy	0.00
8:00 a. m.	30.1	32	SW	3	Cloudy	0.00
11:00 a. m.	30.1	32	SW	3	Cloudy	0.00
2:00 p. m.	30.1	32	SW	3	Cloudy	0.00
5:00 p. m.	30.1	32	SW	3	Cloudy	0.00
8:00 p. m.	30.1	32	SW	3	Cloudy	0.00
11:00 p. m.	30.1	32	SW	3	Cloudy	0.00
Total Precipitation						0.00

SOCIETIES.

Montezuma Lodge No. 1, A. F. & A. M. Regular convocation second Monday in each month at Masonic Hall at 7:30 p. m. A. F. STEIGELBERG, W. M. A. SELIGMAN, Secretary.

Santa Fe Chapter No. 1, R. A. M. Regular convocation second Monday in each month at Masonic Hall at 7:30 p. m. P. E. HANCOCK, H. P. T. J. CUNHAM, Secretary.

Santa Fe Council No. 3, R. & S. M. Regular convocation second Monday in each month at Masonic Hall at 8:30 p. m. MAX. FROST, T. I. M. ED. E. SLUDER, Recorder.

Santa Fe Commandery No. 1, E. T. Regular convocation fourth Monday in each month at Masonic Hall at 7:30 p. m. W. S. HANCOCK, E. C. T. J. CUNHAM, Recorder.

WOODMEN OF THE WORLD. Coronado Camp No. 3. Woodmen of the World, meet on the second Thursday evening of each month at 8 o'clock, in Asian hall. L. O. O. F. Visiting sovereigns are fraternally invited. J. B. BRADY, Consul Comdr. ADDISON WALKER, Clerk.

The PECOS VALLEY of . . . NEW MEXICO

OFFERS unequalled advantages to the farmer, fruit grower, live stock raiser, dairyman, bee-keeper, and to the home-seeker generally. The soil of the Pecos Valley is of high average fertility, and under irrigation produces bountiful crops of most of the grasses, grains, vegetables and fruits of the temperate and some of those of the semi-tropical zone. In such fruits as the peach, pear, plum, grape, prune, apricot, nectarine, cherry, quince, etc., the Valley will dispute for the pre-eminence with California; while competent authority pronounces its upper portion in particular the finest apple country in the world.

Enormous yields of such forage crops as alfalfa, sorghum and Egyptian corn make the feeding of cattle and sheep and the raising and fattening of hogs a very profitable occupation.

The cultivation of canebrake—a tanning material of great value—is becoming an important industry in the Pecos Valley, a home market having been afforded for all that can be raised, at a price yielding a handsome profit.

The climate of the Pecos Valley has no superior in the United States, being pre-eminently healthful and health restoring.

Lands with perpetual water-rights are for sale at low prices and on easy terms. The water-supply of the Pecos Valley has no equal in all the arid region for constancy and reliability; and this with the superb climate, productive soil and the facilities afforded by the railway which extends through the Valley's entire length, will cause these lands to enjoy a constant, and at times, rapid increase in value. The recent completion of the Pecos Valley Railway to Roswell will cause the more rapid settlement and development of the upper portions of the Valley, including the rich Felix section. The company has recently purchased many of the older improved farms about Roswell, and has now for sale lands to meet the wants of all—raw lands, partially improved lands, as well as farms with houses, orchards and fields of alfalfa and other crops. In the vicinity of Roswell several pieces of land have been divided into five and ten acre tracts, suitable for orchards and truck farms in connection with suburban homes. Certain of these tracts are being planted to orchards, and will be cultivated and cared for by the company for three years at the end of which period they will be handed over to the purchasers. Write for pamphlet fully describing the terms and conditions on which these several classes of tracts are sold.

FOR FULL INFORMATION REGARDING THE PECOS VALLEY WITH COPIES OF ILLUSTRATED PUBLICATIONS ADDRESS

The Pecos Irrigation and Improvement Company, Eddy, N. M., or Colorado Springs, Colo.

PROFESSIONAL CARDS.

J. B. BRADY, Dentist. Rooms in Kahn Block, over Spitz's Jewelry Store. Office hours, 9 to 12 a. m.; 2 to 5 p. m.

ATTORNEYS AT LAW.

MAX FROST, Attorney at Law, Santa Fe, New Mexico.

JOHN P. VICTORY, Attorney at Law, Santa Fe, N. M. Will practice in all the courts.

GEO. W. KNAEBEL, Office in Griffin block. Collections and searching titles a specialty.

EDWARD L. BARTLETT, Lawyer, Santa Fe, New Mexico. Office, Castron block.

E. A. FISKE, Attorney and counselor at law, P. O. Box "F," Santa Fe, N. M., practices in supreme and all district courts of New Mexico.

T. F. CONWAY, W. A. HAWKINS, CONWAY & HAWKINS. Attorneys and counselors at law, Silver City, N. M. Prompt attention given to all business entrusted to our care.

A. B. RENEHAN, Attorney at Law. Practices in all territorial courts. Commissioner court of claims. Collections and title searching. Office with E. A. Fiske, Spiegelberg block Santa Fe.

RIO GRANDE & SANTA FE

Denver & Rio Grande Railroads.

THE SCENIC LINE OF THE WORLD

Time Table No. 40.

[Effective October 15, 1896.]

FAST ROUTE	WEST ROUTE
No. 40.	MILES No. 42.
10:30 a. m. Lv. Santa Fe, Ar.	3:45 p. m. Ar. Santa Fe, Ar.
12:30 p. m. Lv. Espanola, Ar.	6: 1:31 p. m. Ar. Espanola, Ar.
1:37 p. m. Lv. Embudo, Ar.	2: 12:30 p. m. Ar. Embudo, Ar.
2:48 p. m. Lv. Barranca, Ar.	3: 11:40 a. m. Ar. Barranca, Ar.
4:10 p. m. Lv. Las Alamos, Ar.	4: 10:07 a. m. Ar. Las Alamos, Ar.
5:35 p. m. Lv. Antonito, Ar.	5: 8:20 a. m. Ar. Antonito, Ar.
6:20 p. m. Lv. Alamosa, Ar.	6: 7:05 a. m. Ar. Alamosa, Ar.
7:10 p. m. Lv. Salida, Ar.	7: 6:10 a. m. Ar. Salida, Ar.
8:31 p. m. Lv. Florence, Ar.	8: 5:15 a. m. Ar. Florence, Ar.
9:30 a. m. Lv. Pueblo, Ar.	9: 4:10 a. m. Ar. Pueblo, Ar.
10:30 a. m. Lv. Colo Spgs., Ar.	9: 3:00 p. m. Ar. Colo Spgs., Ar.
11:30 a. m. Ar. Denver, Ar.	10: 6:50 p. m. Ar. Denver, Ar.

Connections with main line and branches as follows: At Antonito for Durango, Silverton and all points in the San Juan country. At Alamosa for Jimtown, Creeds, Del Norte, Monte Vista and all points in the San Luis valley.

At Salida with main line for all points east and west, including Leadville. At Florence with F. & C. O. R. R. for the gold camps of Oribelle Creek and Victor.

At Pueblo, Colorado Springs and Denver with all Missouri river lines for all points east. Through passengers from Santa Fe will have reserved berths in sleeper from Alamosa if desired.

For further information address the undersigned. T. J. HAZEL, General Agent, Santa Fe, N. M. S. K. HOOPER, G. P. A., Denver, Colo.

The Short Line

Santa Fe Route.

To all Points North, East, South and West.

Through Pullman and Dining Car Service on magnificent vestibuled trains, composed of Pullman Palace Sleepers, elegant dining cars, reclining chair cars, free, running through without change between Chicago and the Pacific coast. Ask or address agents below for time cards and illustrated matter pertaining to the "Santa Fe Route."

E. COPLAND, General Agent, El Paso, Tex.

H. S. LUTZ, Agent, Santa Fe, N. M.

COAL & TRANSFER, LUMBER AND FEED.

All kinds of Rough and Finished Lumber; Texas Flooring at the lowest Market Price; Windows and Doors. Also carry on a general Transfer Business and deal in Hay and Grain.

DUDROW & DAVIS, Props.

Henry Hinges.

Make Direct Connections With D. & R. G. TRAINS Both Ways.

Frank Stites.

56 Miles Shortest Stage Line to Camps

ANTONITO AND LA BELLE

-Overland Stage and Express Company-

U. S. Mail.

RUN DAILY BETWEEN LA BELLE AND ANTONITO, CONNECTING WITH TRI-WEEKLY STAGE AND MAIL AT COSTILLA.

Best of Service—Quick Time.

Arrive at La Belle Daily 7 p. m.

In the night the ear oft catches
A dreamy musical sound.
Tis the American Lever Watches
Sold at One Dollar the whole year
around.

He has knives at various prices
To suit rich and poor alike.
In the present financial crisis,
No one need go on a strike,
And about asbestos mats you'll
learn.

The light so brightly gleaming
From Goebel's, shines more and
more
Over the land its rays go streaming,
Bringing customers to his store.

W. H. GOEBEL.

Muller & Walker,

TABLE LUXURIES & BAKERY

TELEPHONE 53

GOLD'S GENERAL STORE,
—DEALER IN—
**DRY GOODS, CLOTHING, BOOTS AND
SHOES, GROCERIES & PROVISIONS.**
TELEPHONE NO. 6. **FREE DELIVERY.**
ABE GOLD, SAN FRANCISCO STREET,
SANTA FE, NEW MEXICO.

David S. Lowitzki,

Centrally Located.
Lower Frisco Street.
First Furniture Store you Come To.

Dealer in

No TROUBLE to Show Goods.
Free Delivery.

**FURNITURE
QUEENSW'RE**

My Holiday Furniture
Just Received.

Prices never before

Equaled in City of Santa Fe.

I will furnish you from the parlor to the
kitchen on easy payments. Highest cash
price paid for second hand goods. I carry
a full line of picture frames and moldings.

Quadruplex Plateholders

Are only found in one camera,
and that's the QUAD. It only
cost FIVE DOLLARS. Your
money back if you don't like the
QUAD.

Pictures 3 1/2 x 3 1/2 inches, on glass plates.

PINNEY & ROBINSON,

THE PHOTO STOCK DEALERS,
18 N. SECOND AVE., PHOENIX, ARIZ.

ESTABLISHED 1887.

ACCOUNTS ALLOWED.

November and December Bills Ap-
proved by County Commissioners—
\$560 Thrown Away on Road
Overseers' Annual State-
ments in Preparation.

At the final meeting of the old board
county commissioners, held on Tuesday
afternoon, the following accounts were
allowed for the months of November and
December:

Dudrow & Davis, coal, \$22.50; Pedro A.
Lujan, commissioner, \$18.87; W. C. Rogers,
commissioner, \$16.11; W. C. Rogers,
expenses, \$3.05; W. P. Cunningham, feed-
ing prisoners, \$75.60; Cayetano Garcia,
jailer, \$50; Jose Amado Martinez, jailer,
\$50; L. Harrison, ironing prisoners, \$41;
Telephone company, \$18; New Mexican
Printing company, \$30; N. M. peniten-
tiary, feeding prisoners, \$91.50; Fr. Gon-
zales y Baca, assessor, \$21.78; Frank
Mauley, clerk of election, \$3; New Mexi-
can Printing company, \$2.50; election ex-
penses, \$39; W. C. Rogers, county com-
missioner, \$50.54; C. W. Dudrow, county
commissioner, November and December,
\$93.84; Pedro A. Lujan, county commis-
sioner, \$49.86; W. P. Cunningham, sher-
iff, \$87; H. B. Cartwright, treasurer,
\$187.50; Cosme Herrera, superintendent
of public schools, \$342.50; A. P. Hill,
county clerk, \$125.53; P. Lopez, jailer,
\$16.25; Cayetano Garcia, jailer, \$50; Jose
Amado Martinez, jailer, \$50; D. Lowitzki,
undue, \$1.10; Fr. Gonzales y Baca, assessor,
\$5; J. W. Sullivan, deputy sheriff, \$63.25;
Dudrow & Davis, coal, \$16.90; road over-
seers in fourteen precincts, at \$40 each,
\$560.

The annual financial statements of
County Clerk Hill and County Treasurer
Cartwright will be presented at the initial
meeting of the new board of county com-
missioners on January 4.

Wanted—Ladies or gentlemen to travel;
\$75 and expenses to right parties. Ad-
dress "W," New Mexican.

ROUND ABOUT TOWN.

Now write it 1-8-9-7, and make no mis-
take.

Big New Year's dinner at the Palace
hotel to-morrow.

If it would just snow enough to jus-
tify taking out the sleighs!

There will be a meeting of Paradise
lodge No. 2, I. O. O. F., this evening at
7:30.

The New Mexican cordially wishes
each and every one of its readers "A hap-
py New Year."

U. S. weather bureau forecast for New
Mexico: Generally fair Friday; colder
Friday morning.

Following its usual custom the New
Mexican will enjoy a holiday to-morrow,
consequently no paper will be issued
from this office.

Rev. G. S. Madden left this morning
for Espanola, where at 1 o'clock this af-
ternoon he conducted the funeral over
the body of the late H. W. Phillips. The
services were held at Phillips' chapel.

The bids for repairs on the federal
building were as follows: Digneo Bro's.,
\$3,321; M. Berardinelli, \$4,874.35; A. Wind-
sor, \$5,487.65. They have been sent to
Washington for final action by the treas-
ury department.

In the plaza pagoda at 2 p. m. to-mor-
row the following program will be ren-
dered by Prof. Perez band:

March—White Swans.....G. Codina
Un Requiemo de Amistad.....G. Codina
Waltz—Song.....G. Codina
March—Liberty Bell.....G. Codina
Mazurka—Violet.....C. Faust
La Golondrina.....Moreno
Galop—Rouget.....Warren

Sylvester service of prayer and song at
the German Lutheran Evangelical church
at 8 o'clock this evening. New Year's
service at 11 a. m. to-morrow. To these
services all Germans are cordially invited.
G. A. Neff, pastor.

Prof. Tilton Jenkins, superintendent
of the city public schools, now attending
the New Mexico Educational association's
annual meeting at Socorro, will insist
that the next annual meeting of this
body be held in Santa Fe. Prof. Jenkins
carries a formal invitation from our citi-
zens to the territorial educators on this
subject.

The Misses Keller will be "at home" to
their friends after 3 o'clock to-morrow
afternoon. They will be assisted in re-
ceiving callers by Mrs. E. L. Hall, Misses
Gulliford, Miss Dickson and Miss
Cammie Jones. Mrs. W. H. Manderfield
and the Misses Manderfield will also re-
ceive callers from 3 p. m. till 8 p. m.
Many other ladies in the city will infor-
mally receive their friends to-morrow af-
ternoon, but these are the only announce-
ments sent to this office.

Wanted—Ladies and gentlemen to en-
gage in city; salary \$50 per month. Ad-
dress "M," New Mexican.

The District Court.

The territorial district court, Judge
Laughlin presiding, met this morning at
10 o'clock and took a recess till 2 p. m.
without transacting any business.

The grand jury is industriously at
work and will probably present an inter-
esting report next week. The Langston
shooting affair at Cerrillos is among the
notable cases undergoing investigation
before this jury. A number of witnesses
have been called from the Little Pittsburg
in this case.

The petit jury will be impaneled on
Monday, January 11.

The habeas corpus proceedings, in the
matter of the three Chinamen who were
to have been deported from Albuquerque,
will come up before Judge Laughlin on
Saturday morning at 10 o'clock.

At the Pie-Counter.

John V. Conway has procured a large
number of excellent indorsements for the
U. S. land office registration.

Nobody seems to be inclined to con-
test W. M. Berger's claims for the re-
ceiptship at the Santa Fe land office.

It looks as though the squabble over
the Santa Fe postoffice had narrowed
down to a contest between Simon Nus-
baum and Milo Hill.

William W. Miller, of Santa Fe, who is
after the surveyor-generalship for New
Mexico, has been in Raton the past two
days circulating among the McKinleyites.
—Raton Reporter.

Col. P. Motherall, candidate for office
of collector of this port, is in the city.
The colonel has a splendid Republican
record as well as federal experience. —El
Paso Herald.

Jefferson Reynolds is still heard from
at Canton, Ohio, where he is watching the
movements of the McKinley cat political.
He was not dumbfounded and surprised to
grasp Gov. L. Bradford Prince by the
friendly hand the other day. —Optic.

Ed. Fox is being warmly indorsed for
the registration of the Clayton land office.
The Clayton Enterprise says: "If the
Republican party is to recognize home
rule in the appointment of federal offi-
cials, then Ed. Fox should by all means
secure that office."

Buy a box of fine stationery for a
New Year's gift, at Fischer & Co's.

As to Fort Marcy.

Why is the Santa Fe New Mexican si-
lent on the proposed steal of the Fort
Marcy reservation. —Raton Reporter.

Why, bless you, son, there's no steal
about it. If the American Invalid
Aid society can induce congress to do-
nate them this property on condition
that they expend \$100,000 in converting
it into a national sanitarium the New
Mexican sees no reason why it should op-
pose the deal as "a steal." On the other
hand, should Gen. Miles consent to carry-
ing out the recommendations of Gen.
McCook and Gen. Watson to agree
to the reconstruction of "this most desir-
able station" by troops, then the New
Mexican will undertake to secure for the
American Invalid Aid society sufficient
land elsewhere hereabouts that is quite as
desirable for their philanthropic purpose.

THE C. E. CONVENTION.

In Annual Session at Raton To-day—
Good Showing for Santa Fe.

The New Mexico union of C. E. so-
cieties convened in annual convention at
the Presbyterian church in this city this
morning. The entertainment committee
of the Raton society met a large dele-
gation at the train from the south. Among
the arrivals were the following ministers:
Rev. R. M. Craig, of Santa Fe, Revs. J. A.
Mena and T. C. Beattie, of Albuquerque,
and Rev. E. H. Ashmun, missionary
of the Congregational church.

The following delegates were escorted
from the train to the homes of the church
members:

D. D. Pruborn, from Socorro, Misses
Mabel Milligan and Josie Williams, of
East Las Vegas, Messrs. Paul Oliver, E.
E. Matthes, W. Seward Brayton, H. S.
Lithgow and F. A. Matthes, president of
the union, from Albuquerque, and Misses
Etta Vaughn, Lena Fox, Ethel Ray and
Mrs. F. A. Matthes.

The convention program extends
through to-day and to-morrow and Thurs-
day morning. The Endeavorers extend
an invitation to all to attend the meetings.
Rev. T. C. Beattie delivers the convention
sermon. —Raton Reporter.

In this connection it is of interest to
note that sixteen inmates of the terri-
torial penitentiary have confessed Christ
through the good work of the Christian
Endeavor society of Santa Fe.

The sum of \$300.60 has been raised by
the societies of the union this year; \$92
was given to missions and \$208.46 for
other purposes; the Albuquerque Congre-
gational society leading, having raised
\$131. The Santa Fe society gave the
most to missions, \$35.15.

**"El Sidelé" clear Havana cigar, 5c
at Scheurich's.**

Lost—Between Fischer's drug store and
Mrs. Keller's residence on Palace avenue,
a pocket book containing a sum of money.
A liberal reward will be given for its re-
turn at T. J. Carrau's.

PERSONAL.

At the Exchange: Mrs. E. L. Smith,
Hillsboro; James Rooney, Hoboken, N. J.

At the Palace: Geo. W. Stewart, Bos-
ton; C. Honser, St. Louis; W. A. Hawkins,
Silver City.

Mr. Francisco Delgado will assume his
duties as stenographer, type-writer and
interpreter for Secretary Miller to-mor-
row.

At the Bon Ton: Agapito Martinez,
Lamy; Homer Donthitt, Cerrillos; J. S.
Holiday, Durango; J. S. Black, Wm. Mc-
Coy, Las Vegas; Geo. Hill, Albuquerque;
Ramon Quintana, Pojoaque.

Judge Bantz, of this city, will deliver
an address at the Territorial university at
Albuquerque, January 5, on "Some Joss-
sip Concerning John Somers and His
Time." —Silver City Independent.

Wanted—Business women to manage
branch office; salary \$100 per month.
Must have some cash and references. Ad-
dress "J," New Mexican.

The best 25-cent meals to be had in the
city at the short order lunch counter at
the Bon Ton.

NEW MEXICO NEWS.

Fourteen prisoners behind the bars in
the San Miguel county jail.

A masquerade ball for children is in
progress at Raton this afternoon.

Harry Bullard and Miss Pearl San-
gareau were married at Albuquerque on
Saturday evening.

The New Mexico Farmers' institute
will be held at the New Mexico college of
agriculture at Mesilla January 4 to 6.

A grand ball was given at Albuquerque
last night by Hon. M. S. Otero and wife
complementary to their daughter, Miss
Dolores.

Dr. Aubright said yesterday afternoon
that J. Q. Willie was still very ill, with
slight hopes of his recovery, reports the
Albuquerque Democrat.

Last Thursday evening Mr. Arthur
Goodell and Miss May B. Gaddis were
married by Rev. A. H. Hyde, at the
Methodist church in Silver City.

It is stated as a fact that upward of
fifty parties have come to Las Vegas to
reside, solely because of the rare oppor-
tunity here afforded for schooling their
children. —Las Vegas Optic.

Eighteen hundred and ninety-seven will
witness such a revival of business and
mining operations in the Cochiti as the
district has not for a long time had the
pleasure of enjoying. —Bland Herald.

The meeting of the New Mexico Ten-
chers' association, now in progress at
Socorro, is generally well attended by the
educators of the territory and much in-
terest is manifested in the practical sub-
jects under discussion.

Sermon in a nut-shell from the Optic:
A half a ton of coal, a sack of flour, and
a dollar in money, given to some deserv-
ing poor family, will bring the donor
nearer to heaven than a dozen windy
prayers.

Last year San Juan county produced
fully 8,000,000 pounds of apples—the
finest apples, too, in the world—and 2-
000,000 pounds of other fruits. From
present indications in 1907 this county
will distance all its previous fruit records.
—Farmington Times.

Dr. G. N. Wood came in from Gold
Hill last Thursday with a number of
specimens of rich ore taken from his
mines there. He says his mill is work-
ing like a clock and his prospects are
very flattering. He is the sort of a man
that always succeeds. He has practical
common sense and is not afraid to soil
his hands. —Silver City Independent.

SUGAR BEET CULTURE.

General Agent Helm Has Taken the
Subject Up with President Jeffery
—The Latter Deeply In-
terested.

Recently Mr. T. J. Helm, general agent
of the Denver & Rio Grande railroad at
Santa Fe, addressed a letter to President
Jeffery, of the road named, on the sub-
ject of beet sugar culture in New Mexico,
accompanying his letter with a sample of
the superior refined sugar produced in
the Pecos valley and several newspaper
clippings relating thereto.

In response to the letter President
Jeffery expresses the opinion that sugar
beets can be produced as plentifully and
as profitably as the Rio Grande valley be-
tween Embudo and Espanola as in the
Pecos country and urges General Agent
Helm to take the matter in hand to the
end that the ranchmen in the re-
gion named may be encouraged experi-
mentally to try beet culture, firmly be-
lieving (as he does) that the soil, climate
and general conditions in the upper Rio
Grande valley are substantially as favor-
able for beet culture as in the Pecos val-
ley.

General Agent Helm has already of-
fered the ranchmen residing between Em-
budo and Espanola all the sugar beet
seed they are willing to plant in the
spring and has also arranged to offer
prizes for the finest specimens of beets
produced during 1897.

Plow's candies received every week.
The only fresh candies in town.
Fischer & Co.

Just received at the Bon-Ton: Fresh
shell oysters. Blue Points in bulk, moun-
tain trout, black bass, lobsters, beef
and pork tenderloins; give us a call.

HENRY KRICK.

SOLE AGENT FOR

Lemp's St. Louis Beer.

ALL KINDS OF MINERAL WATER

The trade supplied from one bottle to a
carload. Mail orders promptly
filled.

QUADALUPE ST. - SANTA FE

**The Management
of the**

—PALACE—HOTEL—

IS NOW IN THE HANDS OF

V. S. SHELBY.

No expense will be spared to make
it a first class house in all its fea-
tures.

Patronage Solicited.

Clothing Made to Order

SOL. SPIEGELBERG,

GENTS' FURNISHER

AND

CLOTHIER.

Carry a full and select line of **HATS,
CAPS, GLOVES, etc.**, and every-
thing found in a first-class establish-
ment.

N. N. NEWELL. P. W. DOBBS

THE

Chavez Planing Mill,

N. N. NEWELL & CO.

MANUFACTURERS OF

**SASH, DOORS,
BLINDS, WINDOW
& DOOR FRAMES,**

**TURNING, SCROLL SAWING
AND ALL KIND OF MOLD-
INGS, ETC.**

Contracts taken in any part of the
country. Jobbing promptly and
satisfactorily attended to. Write
for estimates on any kind of
work. Planing mill and shop on
Lower Water Street.

The Exchange Hotel,

Best Located Hotel in City.

J. T. FORSHA, Prop.

\$1.50 PER DAY. \$2

Special Rates by the Week or Month
for Table Board, with or without
room.

8 E. Corner of Plaza.

Dress

Goods A THOUSAND PATTERNS—the
Latest and Best—all grades.

Style Every Garment correctly made
in the prevailing fashion.

Fit Cut from carefully taken mea-
surements, modeled to your form.

Finish High-Grade Trimmings, skilled
workmen, attention to details.

Cost Hardly more than "ready-made,"
but infinitely better every way.

Makers The Largest Custom Tailoring
Establishment in the World.

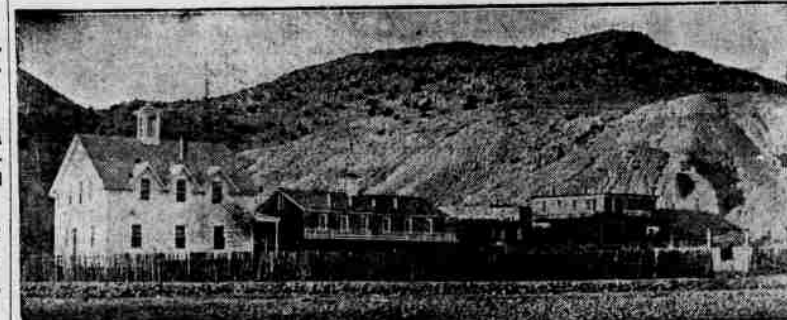
Che Royal Tailors, Chicago.

—JAKE LEVY, Agt.

S. SPITZ,
MANUFACTURER OF
GOLD AND SILVER FILIGREE JEWELRY,
DEALER IN
DIAMONDS,
WATCHES,
CLOCKS AND
SILVERWARE.

Diamond mountings of all kinds and settings made to order by
first-class workmen and at reasonable prices.
Do not fail to look over the new line of leather belts and combined
pocket-books ornamented with sterling silver.

OJO CALIENTE
(HOT SPRINGS.)



THESE Celebrated Hot Springs are located in the midst of the Ancient
Cliff Dwellers, twenty-five miles west of Taos, and fifty miles north of
Santa Fe, and about twelve miles from Barranca Station on the Denver
& Rio Grande Railway, from which point a daily line of stages run to the
springs. The temperature of these waters from 90° to 125°. The gases
are carbonic. Altitude 5,000 feet. Climate very dry and delightful the year
around. There is now a commodious hotel for the convenience of in-
valids and tourists. These waters contain 188.34 grains of alkaline salts
to the gallon; being the richest Alkaline Hot Springs in the world. The
efficiency of these waters has been thoroughly tested by the miraculous cures
attested to in the following diseases: Paralysis, Rheumatism, Neuralgia,
Consumption, Malaria, Bright's Disease of the Kidney, Syphilis and
Mercurial Affections, Scrofula, Catarrh, La Grippe, all Female Com-
plaints, etc., etc. Board, Lodging and Bathing, \$2.50 per day. Reduced
rates given by the month. For further particulars address—

ANTONIO JOSEPH, Prop.,
Ojo Caliente, Taos County, New Mexico.

This resort is attractive at all seasons and is open all winter.

Passengers for Ojo Caliente can leave Santa Fe at 11:15 a. m.
and reach Ojo Caliente at 6 p. m. the same day. Fare for the
round trip from Santa Fe to Ojo Caliente, \$7.

**GROCERIES,
FEED AND
FLOUR . . .**

NO. 4 BAKERY.

H. B. CARTWRIGHT & BRO.

PROPRIETORS

First impressions are the most
lasting. Remember this when
preparing to receive guests at
dinner.

ARMOUR'S WHITE LABEL SOUPS

Can only be equalled by the most skilled
chefs. We shall be pleased to furnish them
at 30c PER QUART CAN, sufficient for five
persons.

For a roast nothing could be nicer or more
appropriate to the season, than one of our
fat turkeys with cranberry sauce.

In vegetables, if you have never tried our
DEW DROP BRAND, of whole tomatoes,
Maine corn, stringless beans, sifted peas and
mammoth asparagus, they will be a revela-
tion to you.

For desert, we can supply you with both
fresh and canned fruits, nuts of all kinds, rais-
ins, bon-bons, plum pudding in cans, pies
and cakes.

TELEPHONE 4

FIRST NATIONAL BANK

Santa Fe, New Mexico.

Designated Depository of the United States

R. J. Palen - President

J. H. Vaughn - Cashier