

12-22-1896

Santa Fe Daily New Mexican, 12-22-1896

New Mexican Printing Company

Follow this and additional works at: https://digitalrepository.unm.edu/sfnm_news

Recommended Citation

New Mexican Printing Company. "Santa Fe Daily New Mexican, 12-22-1896." (1896). https://digitalrepository.unm.edu/sfnm_news/5499

This Newspaper is brought to you for free and open access by the New Mexico Historical Newspapers at UNM Digital Repository. It has been accepted for inclusion in Santa Fe New Mexican, 1883-1913 by an authorized administrator of UNM Digital Repository. For more information, please contact disc@unm.edu.

SANTA FE DAILY NEW MEXICAN.

VOL. 33.

SANTA FE, N. M., TUESDAY, DECEMBER 22, 1896.

NO. 260

NATIONAL CAPITAL BUDGET

Senator Vest's Speech Concerning Olney's Attitude Toward Cuba Merely Postponed.

PACIFIC RAILROAD DEBTS IN SENATE

Sen. Pettigrew Prefers Grave Charges—Claims Union Pacific Professes to Be Insolvent for the Purpose of Defrauding Government.

Washington, Dec. 22.—Senator Vest's anticipated speech concerning Secretary Olney's attitude toward the Cameron resolution allied the senate galleries to overflowing to-day, but Senator Vest did not continue the remarks, which were cut off by an objection yesterday.

The urgent deficiency bill was reported passed with minor amendments. It carries \$881,886, the largest part of which is a continuation of the work of the year department.

Mr. Pettigrew, of South Dakota, called up his resolution appropriating \$10,000,000 to take up the trust notes of the Union Pacific railroad. He said that this step was imperative to protect the interests of the government against the schemes of those who held the notes, whose purpose was to absorb the branch lines of the Union Pacific.

He believed that the Union Pacific company was not insolvent and that a floating debt had been created for the express purpose of complicating and embarrassing the government.

Mr. Gear, of Iowa, chairman of the committee on Pacific roads, asked if Mr. Pettigrew favored operating the roads by the government.

Mr. Pettigrew answered certainly, that the government could not possibly manage the Pacific roads worse than they had been managed. It would do away with the pools, combinations and discriminations which made American roads a target for criticism.

Mr. Blah, of Connecticut, spoke of the imperative necessity of considering the important question of a settlement with the Pacific roads. The indebtedness thereof, reaching \$115,000,000, was in danger of being lost.

Mr. Morgan, of Alabama, said that the statements made by Mr. Pettigrew were of a most grave character. It was difficult for any single mind to grasp the "abyss of fraud and rapacity" that had made this subject a perfect naturalia of fraud.

CUBAN DEBATE POSTPONED.

The Pacific railway discussion was continued in the senate to 2 p. m., when the morning hour expired, apparently ending the prospects of the Cuban debate.

PRESIDENTIAL NOMINATIONS.

The president to-day sent the following nominations to the senate: War department, Chas. Sawtelle, assistant quartermaster-general, to be brigadier-general and quartermaster-general; Capt. Arthur L. Wagner, 6th infantry, to be major and assistant adjutant-general; to be captain and assistant quartermaster-general; First Lieutenant Carroll, 25th infantry; First Lieutenant Thos. Cruise, 6th cavalry; First Lieutenant Daniel McArthur, 12th infantry; First Lieutenant John T. Knight, 3rd cavalry; to be captain and commissary of subsistence; First Lieutenant William Baldwin, 7th cavalry; First Lieutenant David L. Bruhn, 2d cavalry; Captain Ayley Jackson, 7th infantry, to be major and paymaster.

Diaz a Sure Sport.

Columbia, Mo., December 22.—The Missouri Tigers, the crack team of the Missouri state university, have received an invitation from President Diaz, of the Mexican republic, to play a game of football in that country, and have made arrangements to start for the City of Mexico immediately. The game will be played at the Indiana grounds on December 27. The Tigers returned home recently after playing a series of successful games in Texas. At Austin, George A. Hill was struck with the line work of the team, and began negotiations with President Diaz, which resulted in the tendering of the invitation.

THE ELEVATOR SYSTEM.

An Important Decision in the Elevator Warehouse Cases at Chicago.

Chicago, Dec. 22.—Judge Tully, in the circuit court, to-day rendered a decision in the elevator warehouse cases, finding against the warehouse men on all points. Two months ago the privilege was granted them to carry on business and perform an appeal to the Illinois supreme court, which will undoubtedly be taken.

The action was in the shape of a petition brought on an information of Attorney-General Maloney for an injunction restraining the elevator men from buying, mixing and storing their own grain with that of their customers.

This injunction was granted, the court holding that the practice of the elevator men was illegal. The decision if sustained will make a great change in the elevator system.

Mining Strike Near Deadwood.

Deadwood, S. D., Dec. 22.—There is much excitement at Deadwood over the great strike at Ragged Top in the Lead shaft mines. The bed of ore continues to show evidence of fabulous wealth. It rivals in richness the history of the history of western mining, the ore running over \$160 to the ton. The mine is owned by Kilpatrick Bros. and Collins.

Will Return to Canton.

Chicago, Dec. 22.—President-elect McKinley and Mrs. McKinley will start for Canton to-night.

AFTER BANK WRECKERS.

Judge Hallett Overrules All Motions in Behalf of the Wreckers of Commercial National Bank of Denver.

Denver, Dec. 22.—In the United States district court to-day, Judge Hallett announced that he would overrule all motions on behalf of Dow, McClure and Miller, convicted as the Commercial National bank wreckers, and would not listen to any argument. He gave counsel until January 22 to prepare papers in appeal. Bail was fixed at \$10,000 for each prisoner. Bonds will be furnished this afternoon.

A Big Kick.

South McAlester, I. T., Dec. 22.—The people of South McAlester held a mass meeting last night and entered a decided protest against the treaty between the Choctaws and the Dawes commission, claiming that the treaty is unfair, unjust and oppressive to non-citizens, causing them to pay double value for improvements, a practical confiscation of the property of the poorer classes, if it becomes a law. Judge C. B. Stuart was elected a delegate to Washington in the interests of the non-citizens.

RIO BRAVO WATERS.

Minister Romero and Uncle Sam a Long Way Apart in Discussing Them.

Washington, Dec. 22.—Secretary Olney and Minister Romero, who represent the Mexican government at this capital, are engaged in a controversy involving some novel points. The former has obtained from Attorney-General Harmon an opinion, having an important bearing on the case, which relates to a large indemnity claim on the part of Mexico for the diversion by our citizens of the waters of the Rio Grande.

Minister Romero states in a long official letter that the city of Paso del Norte has existed for more than 300 years, during almost all of which time its people enjoyed the use of the

WATERS OF THE RIO GRANDE.

for the irrigation of their lands. As that city and the districts within its jurisdiction did not need more than twenty cubic meters of water per second—which was an almost infinitesimal portion of the volume of water even in times of severe drought—they had sufficient water for their crops until about ten years ago, when a great many trenches were dug in Colorado, especially in the San Luis valley and in New Mexico, through which the upper Rio Grande and its tributaries were diverted, thus diminishing the water in the river at El Paso that, except when rains happen to be abundant, there is a scarcity of water from the middle of June until March.

One year the river changed to be entirely dry, no crops were raised and even fruit trees began to wither. There has been a subsequent reduction in

THE PRICE OF LAND.

A great hardship has been imposed on the people and there has been a diminution in population in ten years by one-half. Minister Romero also states that an American army officer in 1850 ascended the river to a point several kilometers above Paso del Norte, a circumstance which, to his mind, shows that the river was navigable at that point.

The state department people have consulted the report of this incident, the document being on file in the war department, and it appeared that the officer, a quartermaster named Love, made the trip under orders in a small keel boat, drawing eighteen inches of water. He was instructed to reach the highest attainable point, and after logging his row and around one point he could get no further up the river than 150 miles below the mouth.

MINISTER ROMERO CONTENDED

that the Colorado and New Mexican irrigation ditches came within the prohibitions of the old treaty of Guadalupe Hidalgo against any work which interrupts navigation.

Attorney-General Harmon says the article of the Guadalupe Hidalgo treaty bearing on the incident is limited in terms to that part of the Rio Grande lying below the southern boundary of New Mexico and applies to such work alone as either party might construct on its own side.

"The only right the treaty professed to create," says the attorney-general, "or protect with respect to the Rio Grande was that of navigation. Claims against the United States by Mexico for indemnity for injuries for agriculture alone caused by scarcity of water resulting from irrigation ditches wholly within the United States at places far above the height of navigation find no support in the treaty."

No Fatalities Resulted.

Wilkesbarre, Pa., Dec. 22.—A canvas of Homestead miners, employed at the Baltimore mine, where the explosion occurred last night, shows that all escaped. The physicians report that all the injured are doing well.

"Freedom from oscillation."

In its issue of February 15th, the "Railway Age" of Chicago gives a very interesting account of some record-breaking runs on the Burlington Route between Galesburg and Chicago. The article says in conclusion:

"The Burlington main line speed to be made with remarkable freedom from oscillation. The train 'purs' over the joints with a delightful rhythm and the passenger seldom realizes that he is riding at an extraordinary rate."

Freedom from oscillation is something the Burlington is famous for all over the country. No matter how great the speed, the train is as steady as any moving object can be.

How could it be otherwise with such a track, such rolling stock, such engines as the Burlington?

G. W. VALLEY, General Agent, Denver.

Clothing Made to Order

SOL SPIEGELBERG, GENTS' FURNISHER

AND **CLOTHIER.**

Carry a full and select line of HATS, CAPS, GLOVES, etc., and everything found in a first-class establishment.

DAILY CRIMINAL BUDGET

An Old Man Cruelly Murdered for His Money Near St. Joseph, Missouri.

A TRIPLE SHOOTING IN CINCINNATI

An Angry Husband Shoots His Wife and Stepson and Then Commits Suicide—Wife Will Die—A Negro Lynched in Alabama.

St. Joseph, Mo., Dec. 22.—Alfred Wilson, 70 years old, one of the best known residents of Andrew county, was murdered last night by robbers at his home, near Avenue City. Wilson was a rich bachelor. Becoming embittered against banks, he drew out his deposits and was supposed to have some concealed at his home. A bloody foot-print on a newspaper is the only clue. It is not known whether the robbers got anything.

TRIPLE SHOOTING IN OHIO.

Cincinnati, Ohio.—James Preston, aged 40, shot his wife, Amanda, aged 37, her son, William Bryant, aged 13, and himself, at their residence, 433 East Pearl street, this morning. Preston was a farmer near New Richmond, Ohio. His wife came to this city taking quarters with her son and making a living at dressmaking. Preston followed and tried to effect a reconciliation. The physicians say Preston and his wife will die. The stepson will recover.

THROAT CUT FROM EAR TO EAR.

Guthrie, O. T.—Wm. Nichols, a farmer, was murdered last night, his throat being cut from ear to ear. Nichols was a bachelor and was suspected of intimacy with a neighbor's wife.

MURDERER DECEASED.

Guthrie, O. T.—Thos. McLaughlin, a negro, suspected of the murder of Freeman Morrow, has been removed from the Stillwater jail to guard against lynching. Morrow, the murdered man's daughter, spoke last night for the first time since the tragedy. While the doctors were dressing the terrible wound in her head, she murmured: "He hit papa with an axe, then hit me."

The doctors now hope that she will be able to identify the murderer.

LYNCHED IN ALABAMA.

Nashville, Tenn.—A Birmingham, Ala., special to the Banner says: Joe James, colored, was lynched at Woodstock last night. He attempted to assault Fannie Smith, aged 17, while she was on her way to school.

Allison's Mid Denial.

Dubuque, Iowa, Dec. 22.—There is no truth in the report that Senator Allison has been offered the secretaryship of the state. Mr. Allison expects to go to Washington immediately after the holiday recess.

A PARIS SUGGESTION.

Some Fool Freshman Wants the Power of Europe to Interfere in Cuban Controversy—Weyler Has Again Gone to the Front.

London, Dec. 22.—A special from Paris says it is suggested that Great Britain, France and Italy, the powers most interested, offer their services in the Cuban question, in order to prevent a conflict between Spain and the United States and terminate the revolt.

WEYLER AGAIN GOES TO THE FRONT.

Havana.—Captain-General Weyler left Havana this morning on the Spanish cruiser Legaspi, bound for Mariet, north of the military line in the province of Pinar del Rio, with the intention of assuming personal command of the operations against the insurgents in that part of Cuba. Gen. Solano reports from Santa Clara that Lieut.-Col. Oliver, in command of the Granada battalion, has an engagement in that district with the insurgents who had over 200 killed and wounded.

Santa Fe Route—California Limited.

Leave Chicago 6:00 p. m. Wednesdays and Saturdays, Kansas City 9:50 a. m. and Denver, 5:40 p. m. Thursdays and Sundays, reaching Los Angeles in 72 hours and San Diego in 76 hours from Chicago. Connecting train from San Francisco via Mohave. Returns Mondays and Thursdays.

Equipment of superb vestibule Pullman palace sleepers, buffet smoking car and dining car. Most luxurious service via any line.

Another express train carrying palace and tourist cars leaves Chicago and Kansas City daily for California.

Inquire of local agent.

G. T. NICHOLSON, G. P. A., A. T. & S. F. Ry., Chicago.

Aviso Legal.

En la corte de pruebas del condado de Santa Fe.

En la materia de la ultima voluntad de Valentin S. Shelby, Anado.

A quien concierne:

Por estas doy noticia en cumplimiento al estado de que he fijado el Lunes, Enero 4 de 1897, a la hora de las 10 de la mañana, siendo la sesion regular de la arriba entitulado corte, para la aprobacion de la ultima voluntad y testamento de Valentin S. Shelby, Anado, ultimamente residente en la ciudad de Santa Fe, en el condado de Santa Fe, N. M.

(SEALO)

APOLONIO CHAVEZ, Juez de Pruebas, Condado de Santa Fe, N. M.

Atestigo:

A. P. HILL, Escribano.

Pedro Santa Fe, N. M., Diciembre 7 de 1896.

THE CHAVEZ PLANING MILL.

N. N. NEWELL & CO.

MANUFACTURERS OF

SASH, DOORS, BLINDS, WINDOW & DOOR FRAMES.

TURNING, MOULDING AND ALL KINDS OF WOODWORK.

Contracts taken in any part of the country. Jobbing promptly and satisfactorily attended to. Write for estimates on any kind of work. Planing mill and shop on Lower Water Street.

THE CHAVEZ PLANING MILL.

N. N. NEWELL & CO.

MANUFACTURERS OF

SASH, DOORS, BLINDS, WINDOW & DOOR FRAMES.

TURNING, MOULDING AND ALL KINDS OF WOODWORK.

Contracts taken in any part of the country. Jobbing promptly and satisfactorily attended to. Write for estimates on any kind of work. Planing mill and shop on Lower Water Street.

The Ohio Idea.

Cincinnati, Ohio, Dec. 22.—Among the subjects that will be presented before the national board of trade by the delegation from the Cincinnati chamber of commerce are recommendations favoring uniform freight classification, revision of the tariff, retirement of the greenbacks, reduction of the tax of bank notes to one-half of 1 per cent, increase of circulation of national bank notes to par value of bonds deposited, establishment of a national clearing house, issue of no bank notes for less than \$5 after July, 1898, international bimetalism, discontinuance of the sub-treasury system, extension of the Torrens system, improvement of the interior water ways, adoption by all nations of a monetary unit of a common value, and the establishment of a department of commerce and manufactures.

Sugar Bounty Warrants Illegal.

Lincoln, Neb., Dec. 22.—The supreme court has decided that the payment of State Auditor Moore of some \$46,000 in warrants for sugar bounties to the Oxnard company is illegal. The bill, passed by the last session of the legislature, provided for the payment of 3/4 of a cent per pound by the state as a bounty for all sugar made by new manufacturers started subsequently to the passage of the law. This bounty was made contingent upon the manufacturers paying for sugar beets at the rate of \$5 per ton.

The bill carried no appropriation for the payment of the bounty, nor was any subsequent appropriation for this purpose made. But the manufacturers went ahead and paid \$5 a ton for beets, and along in December last applied to State Auditor Moore for the accrued bounty. The auditor issued the warrants for \$46,000. The position of the auditor was attacked in several quarters, and Attorney-General Churchill advised State Treasurer Bartley to pay no money on the warrants when presented.

The Kansas City Smelter.

Kansas City, Mo., Dec. 22.—It is announced that the Kansas City Smelting & Refining company's works, which for some time past have been operated with a reduced force, will start up January 1 in all departments. The greatest number which has ever been employed by the works, namely 600, will be exceeded by about 100 hands.

Sugar and Coffee.

Toledo, Ohio, Dec. 22.—The American Sugar Refining company, better known as the Sugar Trust, has closed a deal for 1,100 shares of stock of the Woolson Spice company, of this city, being eleven-eighths of its total stock. The price to be paid is \$1,265,000.

The story behind this gigantic transaction is an interesting one. Some time ago, the Arbuckle, known as "the coffee king," branched out in the refining business, and became the competitors of the Sugar Trust. At first the trust offered to buy out the Arbuckle's plant.

Then the refining company concluded to bank the movement of the Arbuckle, and hence this deal. Representatives of the refining company opened negotiations with the Woolson Spice company, who are close competitors of the Arbuckle in the coffee business, and now the Sugar Trust is fighting the Arbuckle in the coffee line.

New York.—The report that interests identified with the American Sugar Refining company have obtained control of the Woolson Spice Package company, of Toledo, with the view of retaliating upon the Arbuckle Coffee company, because of its determination to build a sugar refinery, is confirmed to an extent by the fact that the Woolson company, which is the second largest roaster of coffee in the United States, reduced the price of its product yesterday 1/2 cent per pound.

This is a most unusual occurrence and is regarded in the trade as very significant.

THE MARKETS.

New York, Dec. 22.—Money on call easy 2 per cent; prime mercantile paper, 4 @ 5; silver, 65 1/2; lead, \$2.75.

Kansas City.—Texas steers, \$2.30 @ \$4.05; Tex. cows @ \$1.00; native steers, \$3.00 @ \$4.50; native cows and heifers, \$1.25 @ \$3.50; stockers and feeders, \$3.20 @ \$3.70; bulls, \$1.60 @ \$2.70. Sheep, lambs, \$3.00 @ \$5.00; muttons, \$1.00 @ \$3.25.

Chicago.—Cattle, beefs, \$3.40 @ \$5.10; cows and heifers, \$1.60 @ \$4.10; Texas steers, \$2.90 @ \$4.10; stockers and feeders, \$2.90 @ \$3.85. Sheep, steady.

Chicago.—Wheat, December, 77; January, 77 1/2. Corn, December, 22 1/2; January, 22 1/2. Oats, December, 16 1/2; January, 16 1/2.

Legal Notice.

In the probate court, Santa Fe county. In the matter of the last will and testament of Valentin S. Shelby, deceased. To whom it may concern:

I do hereby give notice pursuant to statute that I have fixed Monday, January 4, 1897, at the hour of 10 o'clock in the forenoon, being the regular session of the above entitled court, for the reading of the last will and testament of Valentin S. Shelby, deceased, lately a resident of the city of Santa Fe, in the county of Santa Fe, New Mexico.

(SEAL)

APOLONIO CHAVEZ, Probated Judge, Santa Fe Co., N. M.

Attest:

A. P. HILL, Clerk.

Dated Santa Fe, N. M., Dec. 7, 1896.

THE CHAVEZ PLANING MILL.

N. N. NEWELL & CO.

MANUFACTURERS OF

SASH, DOORS, BLINDS, WINDOW & DOOR FRAMES.

TURNING, MOULDING AND ALL KINDS OF WOODWORK.

Contracts taken in any part of the country. Jobbing promptly and satisfactorily attended to. Write for estimates on any kind of work. Planing mill and shop on Lower Water Street.

THE CHAVEZ PLANING MILL.

N. N. NEWELL & CO.

MANUFACTURERS OF

SASH, DOORS, BLINDS, WINDOW & DOOR FRAMES.

TURNING, MOULDING AND ALL KINDS OF WOODWORK.

Contracts taken in any part of the country. Jobbing promptly and satisfactorily attended to. Write for estimates on any kind of work. Planing mill and shop on Lower Water Street.

RESULTS OF GOLD STANDARD

Further Particulars Regarding the Disastrous Failure of National Bank of Minnesota.

NATIONAL BANK OF MINNESOTA CLOSED

It Was Considered One of the Strongest Financial Institutions in the West—Assets and Liabilities—Several Other Failures.

Chicago, Dec. 22.—The assets of the National Bank of Minnesota, closed yesterday, are said to have included an addition of \$2,475,000, loaned to the Calumet Electric company; \$500,000 advanced to Robert Berger, son-in-law of President George Schneider; \$500,000 advanced to G. A. Weiss, another son-in-law, and over \$800,000 advanced on doubtful debts. Berger is a partner of the firm of E. S. Dryer & Co., which also went into the hands of a receiver yesterday. Weiss is a brewer.

The losses will fall upon 1,971 individual depositors and 350 national, state and private banks.

The deposits of the treasurer of Chicago and Cook county aggregate almost \$1,000,000.

Robert E. Jenkins, one of the directors of the National Bank of Illinois says: "The directors were unaware of the loans which appear to have carried the bank down, or were not until the latter part of last week. I do not care to say who I believe was to blame for the directors being kept in the dark as to the magnitude of these loans."

RUNS ON OTHER CHICAGO BANKS.

Chicago.—There is quite a little run on the Illinois Trust & Savings bank. The depositors are hoarding the thirty-day notes, except where they can satisfy the officials that the money they desire is for legitimate purposes.

Runs were made yesterday on several other banks, notably on the Gordon City Banking & Trust company. Its doors were opened an hour before banking hours to-day. By 10:30 withdrawals had ceased and the depositors had trebled the amount taken out. The withdrawals from other banks were few.

It is generally expected that Examiner McKee will be appointed receiver permanently of the National Bank of Illinois.

BANK OF MINNESOTA FAILS.

St. Paul, Minn.—State Bank Examiner Kenyon to-day took possession of the Bank of Minnesota, and as a result, the Union Stock Yards bank also closed. The Bank of Minnesota's capital is \$2,000,000. It was considered one of the strongest banks in the west.

EXTENT OF MINNESOTA DISASTER.

The last published statement, October 6, 1896, gave the following liabilities: Capital stock paid in, \$600,000; surplus funds, \$100,000; undivided profits, \$102,783; individual deposits, \$1,071,051.90; time certificates of deposits, \$1,141,993.92; due banks, \$303,218.71; demand certificates, \$101,522.30; total, \$3,320,989.43. The assets and discounts were \$2,241,826.75; cash on hand, \$251,649.88.

The closing of the banks has not affected the other banks of the city. The reason given for the failure is the general stringency.

ANOTHER FAILURE IN CHICAGO.

Chicago.—William Dill was to-day appointed receiver of the general contracting firm of Angus & Glustee upon application of John Angus. The firm owes the National Bank of Illinois \$250,000. The suspension of the bank ruined the firm's credit. The assets are figured at \$300,000, and the liabilities at \$250,000.

Holiday Rates.

For Christmas and New Year holidays the Santa Fe route will place on sale tickets to all points in New Mexico at one fare for the round trip. Dates of sale, Dec. 24, 25 and 31, 1896, and January 1, 1897, good for return passage until January 4, 1897.

H. S. LUTZ, Agent, Santa Fe, N. M.

G. T. NICHOLSON, G. P. A., Chicago, Ill.

The Management of the

PALACE HOTEL.

IS NOW IN THE HANDS OF

V. S. SHELBY.

No expense will be spared to make it a first class house in all its features.

Patronage Solicited.

LEGAL NOTICE.

In the probate court, Santa Fe county. In the matter of the last will and testament of Valentin S. Shelby, deceased. To whom it may concern:

I do hereby give notice pursuant to statute that I have fixed Monday, January 4, 1897, at the hour of 10 o'clock in the forenoon, being the regular session of the above entitled court, for the reading of the last will and testament of Valentin S. Shelby, deceased, lately a resident of the city of Santa Fe, in the county of Santa Fe, New Mexico.

(SEAL)

APOLONIO CHAVEZ, Probated Judge, Santa Fe Co., N. M.

Attest:

A. P. HILL, Clerk.

Dated Santa Fe, N. M., Dec. 7, 1896.

THE CHAVEZ PLANING MILL.

N. N. NEWELL & CO.

MANUFACTURERS OF

SASH, DOORS, BLINDS, WINDOW & DOOR FRAMES.

TURNING, MOULDING AND ALL KINDS OF WOODWORK.

Contracts taken in any part of the country. Jobbing promptly and satisfactorily attended to. Write for estimates on any kind of work. Planing mill and shop on Lower Water Street.

NEW MEXICO NEWS.

Charles Hfield shipped a car load of sheep from Las Vegas to Detroit, Mich., yesterday.

Clemente Chavez shipped four cars of sheep Wednesday from Magdalena to the Kansas City market.

A grading outfit, belonging to G. E. Hopkins, passed through Socorro, on Friday, bound for Raton.

Col. J. M. La Ceria, the Brazilian court, is now in charge of the Anton Chico school, says the Optic.

Jacob Pierce and Miss Matilda Moore were married in Roswell, on Tuesday evening, at the residence of the bride's parents, Mr. and Mrs. P. F. Moore.

The bond of Juan D. Romero, sentenced to the pen for murder in the second degree, charged with the killing of Rael, in Mora county, and whose case was remanded by the supreme court, was fixed at \$10,000, and has been approved by the court.—Las Vegas Optic.

Twelve teams are now hauling coke from Magdalena to the smelting works of the Cliff Mining & Smelting company in the Black Range, put on by that fireless hauler, G. F. Graves. It is expected that the smelter will "blow in" before the first of the year, and as this company owns some valuable property we may expect some good results in the near future.—Socorro Advertiser.

There has been no court this week because of the unexpected length of the adjourned session of the supreme court, at Santa Fe, which has taken the time of Associate Justice Hamilton. Very little harm is done, however, as the petit jury was called for next Monday, and is therefore not costing the taxpayers anything. The next two weeks will be devoted to pushing through the civil business, after which will come the criminal.—Socorro Advertiser.

The sad intelligence was received by wire by C. H. Spotteder, to-day, of the death of Mrs. Fred Walsen, in Denver, Colo., at 4 o'clock this morning, surrounded by the immediate family, at the age of 49 years. This goodly wife, mother and sister, is survived by a husband, Gen. Fred Walsen, ex-state treasurer of Colorado, three daughters, Misses Freda, Cora and Mrs. Millie Chamberlain, and a son, Fred, all residents of Denver. She was the sister of C. H. Spotteder, a cousin of Mrs. Charles Tamm, and a sister-in-law of H. Risch, of this city.—Las Vegas Optic.

Returning from a Church Entertainment.

Wheeling, W. Va., Dec. 22.—At Littleton a wire suspension bridge over a creek broke down while crowded with people returning home from a church entertainment. Thirty or forty people were precipitated into the stream. Wilbert Hamilton, aged 18, was killed; Miss Artie Brown and Harry Anderson were dangerously injured, and eight or ten others badly injured.

For Sale or Rent.

The Simmons' place, the most desirable home in the city, will be sold very low or rented to good tenant. Inquire of H. B. HENRY.

Bon Ton restaurant—Fresh oysters, fish and game; Kansas City meats. Open day and night.

Blank Book Work and Ruling to Order.

BOOK AND JOB PRINTING NEATLY AND PROMPTLY DONE.

THE MANAGEMENT OF THE PALACE HOTEL.

V. S. SHELBY.

LEGAL NOTICE.

THE CHAVEZ PLANING MILL.

N. N. NEWELL & CO.

MANUFACTURERS OF

SASH, DOORS, BLINDS, WINDOW & DOOR FRAMES.

TURNING, MOULDING AND ALL KINDS OF WOODWORK.

Contracts taken in any part of the country. Jobbing promptly and satisfactorily attended to. Write for estimates on any kind of work. Planing mill and shop on Lower Water Street.

THE CHAVEZ PLANING MILL.

N. N. NEWELL & CO.

MANUFACTURERS OF

SASH, DOORS, BLINDS, WINDOW & DOOR FRAMES.

TURNING, MOULDING AND ALL KINDS OF WOODWORK.

Contracts taken in any part of the country. Jobbing promptly and satisfactorily attended to. Write for estimates on any kind of work. Planing mill and shop on Lower Water Street.

THE CHAVEZ PLANING MILL.

N. N. NEWELL & CO.

MANUFACTURERS OF

SASH, DOORS, BLINDS, WINDOW & DOOR FRAMES.

TURNING, MOULDING AND ALL KINDS OF WOODWORK.

Contracts taken in any part of the country. Jobbing promptly and satisfactorily attended to. Write for estimates on any kind of work. Planing mill and shop on Lower Water Street.

THE CHAVEZ PLANING MILL.

N. N. NEWELL & CO.

MANUFACTURERS OF

SASH, DOORS, BLINDS, WINDOW & DOOR FRAMES.

TURNING, MOULDING AND ALL KINDS OF WOODWORK.

Contracts taken in any part of the country. Jobbing promptly and satisfactorily attended to. Write for estimates on any kind of work. Planing mill and shop on Lower Water Street.

THE CHAVEZ PLANING MILL.

N. N. NEWELL & CO.

MANUFACTURERS OF

SASH, DOORS, BLINDS, WINDOW &

The Daily New Mexican

BY THE NEW MEXICAN PRINTING CO.

Entered as Second-Class matter at the Santa Fe Post Office.

RATES OF SUBSCRIPTIONS.

| | |
|------------------------------|-------|
| Daily, per week, by carrier | 25 |
| Daily, per month, by carrier | 1.00 |
| Daily, per month, by mail | 1.50 |
| Daily, three months, by mail | 4.50 |
| Daily, six months, by mail | 9.00 |
| Daily, one year, by mail | 18.00 |
| Weekly, per month | 25 |
| Weekly, per quarter | 75 |
| Weekly, per six months | 1.50 |
| Weekly, per year | 3.00 |

All contracts and bills for advertising payable monthly. All communications intended for publication must be accompanied by the writer's name and address, not for publication, but as evidence of good faith, and should be addressed to the Editor. Letters pertaining to business should be addressed to the NEW MEXICAN PRINTING CO., Santa Fe, New Mexico.

The New Mexican is the oldest newspaper in New Mexico. It is sent to every postoffice in the Territory and has a large and growing circulation among the intelligent and progressive people of the southwest.

Notices are hereby given that orders given by employees upon the New Mexican Printing Co., will not be honored unless previously endorsed by the business manager.

Notice.

Requests for back numbers of the New Mexican must state date wanted, or they will receive no attention.

Advertising Rates.

Wanted—One cent a word each insertion. Local—Ten cents per line each insertion. Reading Room—Fifteen cents per line each insertion. Display—Two dollars a line, single column, per month by mail. One dollar a line, single column, in either English or Spanish Weekly. Additional prices and particulars given on receipt of copy of matter to be inserted. Prices vary according to amount of matter, length of time run, position, number of changes, etc. No copy of each paper in which an ad. appears will be sent free. Word has been accepted. No display advertisements accepted for less than \$1 net. per month. No reduction in price made for "every other day" advertisements.

TUESDAY, DECEMBER 22.

Justice shall be done.

The supreme court of the land has spoken.

SALT LAKE is going to have a railroad direct to Los Angeles. Who says the southwest is not in it for good times?

DOUBTLESS now the poor ignorant Catholics who have supported the Batton gang all through this agony will realize what the majesty of the law really means.

AND now the question arises whether the executive or legislative branch of government has authority to deal with the Cuban question. The people will watch the subject with more than ordinary interest. Let's have it settled once and for all.

CONGRESS quits work to-day and will take a long recess, adjourning to January 4. All matters of importance are by common consent being postponed until after the holidays, and the chances are that they will then be continually side-tracked to make way for the appropriation bills.

THIRTY thousand bales of wool are expected to arrive in this country on the next steamer from Australia. It is being shipped in on account of the anticipation of the adoption of a wool tariff. But the Australians need not have been in such a rush; our Republican legislators, even with the deficit getting bigger every month and with the plain evidence before them of the urgent need of more revenue, have calmly sat back and decided not even to attempt to earn their wages till they can perform their duty without having to contend with difficulties, next spring. This, from a Republican exchange, is indeed refreshing!

THE SURVEYOR-GENERALSHIP.

A dozen or more of more or less worthy—or unworthy—applicants are out after the surveyor-generalship under the new administration, but in this, as in all cases of the sort, only one can win, and the New Mexican desires right now and here to call attention to the fact that this office is of much more importance to day than ever before in the history of New Mexico. We all know and appreciate the work that has been done by the U. S. court of private land claims, and in designating a new surveyor-general respect must be shown to this august body and its requirements. Under the law as it now stands a surveyor-general who does not work in harmony with this court can do an immense amount of harm. This fact should be taken into consideration by citizens in their recommendation of applicants for this important office.

A RIGHTEOUS JUDGMENT.

The New Mexican last evening had the satisfaction of placing before the public the announcement fresh from Washington that the United States supreme court had affirmed the judgment of the supreme court of New Mexico, sentencing Francisco Gonzales y Borrego, Antonio Gonzales y Borrego, Luciano Alarid and Patricio Valencia to be hanged for the cold-blooded assassination of ex-Sheriff Francisco Chavez in this city on the night of May 29, 1892.

While no one familiar with the facts of the case has ever entertained a doubt of the guilt of the four condemned men named, every method known to the law, every technicality capable of causing delay, has been exhausted by skillful counsel to save their miserable necks from the hangman's noose.

After an exceptionally protracted and impartial preliminary hearing before Judge Seeds, then of the New Mexico supreme court, their guilt was made so manifest that they were bound over without a jury; they were impartially tried before a jury of their peers, convicted of murder in the first degree and sentenced to be hanged by Judge Hamilton; their indefatigable counsel, Messrs. Catron & Spies, next took an appeal to the territorial supreme court; after patiently re-

viewing the proceedings in the district court and fairly considering the numerous errors alleged in favor of a new trial, the supreme court of New Mexico affirmed the judgment of the court below and fixed a new day for the execution of the death sentence; then a stay of execution was secured from Judge Brewer, of the United States supreme court, pending an appeal to the court of the last resort; and now the latter tribunal, having passed upon the alleged errors upon which the appeal was founded and decided the proceedings of the territorial courts regular, has formally affirmed the judgment of the supreme court of New Mexico.

This decision seems to be final and nothing now apparently remains to be done in the premises than for the territorial supreme to order the execution of its sentence when it meets again in adjourned regular session on January 4. The action of the United States supreme court in this notable case is very gratifying to the friends of law and order in New Mexico. It is a genuine triumph of justice against great odds; it is a substantial and merited vindication of the territorial courts. The execution of the righteous death sentence so long hanging over the heads of these cruel and cowardly assassins will prove a blessing of inestimable value to New Mexico as a whole and to Santa Fe county in particular.

PRESS COMMENT.

Kindly Word for Collier.

Capt. Collier, editor of the Raton Range, is prominently mentioned as a candidate for governor of this territory under the McKinley administration. Aside from the satisfaction of having an able representative of the press of the territory occupying so important an office, Capt. Collier has some claims for party recognition. He was the first to suggest the name of Mr. McKinley for the presidential nomination and worked hard throughout the campaign for Republican success in the territory. Bro. Collier is said to be personally intimate with the president-elect,—Lumberton Independent.

A. T. & S. F. TIME TABLE.

(Effective Nov. 4, 1896.)

| Eastbound. | Westbound. |
|---|---|
| No. 4, Leave Santa Fe, N. M., Wednesday and Saturday at 11:35 a. m. | No. 3, Leave Santa Fe, N. M., Monday and Friday at 8:30 a. m. |
| At Albuquerque, 2:35 p. m. | At Albuquerque, 11:30 a. m. |
| Raton, 4:45 p. m. | Gallup, 10:30 a. m. |
| La Junta, 6:55 p. m. | Holbrook, 9:30 a. m. |
| Pueblo, 9:05 p. m. | Flagstaff, 8:30 a. m. |
| Col. Springs, 11:15 p. m. | Williams, 7:30 a. m. |
| Denver, 1:25 a. m. | Ash Fork, 6:30 a. m. |
| Topeka, 3:35 a. m. | Prescott, 5:30 a. m. |
| Ros. City, 5:45 a. m. | Phoenix, 4:30 a. m. |
| St. Louis, 7:55 a. m. | Barstow, 3:30 a. m. |
| St. Paul, 10:05 a. m. | San Bernardino, 2:30 a. m. |
| Chicago, 12:15 p. m. | Los Angeles, 1:30 p. m. |
| CHICAGO, 12:15 p. m. | San Diego, 1:30 p. m. |

| Eastbound. | Westbound. |
|--|--|
| No. 4, Arrive Santa Fe, Wednesday and Saturday at 2:30 p. m. | No. 3, Arrive Santa Fe, Monday and Friday at 10:45 a. m. |
| At San Diego, 2:45 p. m. | At Chicago, 6:00 p. m. |
| Los Angeles, 3:55 p. m. | St. Louis, 1:15 p. m. |
| San Bernardino, 5:05 p. m. | St. Paul, 12:15 p. m. |
| Barstow, 6:15 p. m. | Kansas City, 11:15 a. m. |
| Phoenix, 7:25 p. m. | Tucson, 10:15 a. m. |
| Prescott, 8:35 p. m. | Flagstaff, 9:15 a. m. |
| Ash Fork, 9:45 p. m. | Col. Springs, 8:15 a. m. |
| Williams, 10:55 p. m. | Pueblo, 7:15 a. m. |
| Flagstaff, 12:05 a. m. | La Junta, 6:15 a. m. |
| Holbrook, 1:15 a. m. | Trinidad, 5:15 a. m. |
| Gallup, 2:25 a. m. | Raton, 4:15 a. m. |
| Albuquerque, 3:35 a. m. | San Bernardino, 3:15 a. m. |
| At SANTA FE, 4:45 a. m. | At SANTA FE, 10:45 a. m. |

| Eastbound. | Westbound. |
|---|--|
| No. 1, Leave Santa Fe, DAILY, 11:30 p. m. | No. 2, Leave Santa Fe, DAILY, 9:30 p. m. |
| At Las Vegas, 4:00 a. m. | At Albuquerque, 1:50 a. m. |
| Springer, 5:10 a. m. | Gallup, 12:40 a. m. |
| Raton, 6:20 a. m. | Flagstaff, 11:40 a. m. |
| La Junta, 7:30 a. m. | Ash Fork, 10:40 a. m. |
| Pueblo, 8:40 a. m. | Prescott, 9:40 a. m. |
| Col. Springs, 9:50 a. m. | Phoenix, 8:40 a. m. |
| Denver, 11:00 a. m. | Barstow, 7:40 a. m. |
| Dodge City, 12:10 p. m. | San Bernardino, 6:40 a. m. |
| Newton, 1:20 p. m. | San Diego, 5:40 a. m. |
| Emporia, 2:30 p. m. | Mojave, 4:40 a. m. |
| Topeka, 3:40 p. m. | San Francisco, 3:40 a. m. |
| Kansas City, 4:50 p. m. | At Albuquerque, 2:50 a. m. |
| St. Louis, 6:00 p. m. | At San Francisco, 2:50 a. m. |
| St. Paul, 7:10 p. m. | At San Francisco, 2:50 a. m. |
| Chicago, 8:20 p. m. | At San Francisco, 2:50 a. m. |
| CHICAGO, 8:20 p. m. | At San Francisco, 2:50 a. m. |

| Eastbound. | Westbound. |
|--|--|
| No. 2, Arrive Santa Fe, DAILY, 12:30 a. m. | No. 1, Arrive Santa Fe, DAILY, 11:30 p. m. |
| At San Diego, 7:40 a. m. | At Chicago, 10:45 p. m. |
| Los Angeles, 8:50 a. m. | St. Louis, 9:45 a. m. |
| San Francisco, 10:00 a. m. | Kansas City, 8:45 a. m. |
| Mojave, 11:10 a. m. | Tucson, 7:45 a. m. |
| Raton, 12:20 p. m. | Flagstaff, 6:45 a. m. |
| Phoenix, 1:30 p. m. | Col. Springs, 5:45 a. m. |
| Denver, 2:40 p. m. | Barstow, 4:45 a. m. |
| Dodge City, 3:50 p. m. | San Bernardino, 3:45 a. m. |
| Newton, 5:00 p. m. | San Diego, 2:45 a. m. |
| Emporia, 6:10 p. m. | Mojave, 1:45 a. m. |
| Topeka, 7:20 p. m. | San Francisco, 1:45 a. m. |
| Kansas City, 8:30 p. m. | At Albuquerque, 1:45 a. m. |
| St. Louis, 9:40 p. m. | At San Francisco, 1:45 a. m. |
| St. Paul, 10:50 p. m. | At San Francisco, 1:45 a. m. |
| Chicago, 12:00 a. m. | At San Francisco, 1:45 a. m. |
| CHICAGO, 12:00 a. m. | At San Francisco, 1:45 a. m. |

CHICAGO & CALIFORNIA LIMITED
Westbound, train No. 3 will leave Chicago and St. Louis on successive Wednesdays and Saturdays, Kansas City and Denver, Thursdays and Sundays arriving at Santa Fe Mondays and Fridays. Eastbound, train No. 4 will leave Los Angeles and San Diego on successive Mondays and Thursdays arriving at Santa Fe on Wednesdays and Saturdays.

These trains will be composed of magnificent Pullman sleeper and Dining cars between Chicago and Los Angeles, Buffet and Smoking car between Kansas City and Los Angeles, and connecting Parlor car between Los Angeles and San Diego, also a through Pullman sleeper between St. Louis (Via Wabash Ry.) and Los Angeles, in both directions without change.

Through Pullman sleeper between Lamy and Denver, Colorado Springs and Pueblo.

No EXTRA FARE will be charged on these trains, but only first-class transportation will be honored.

NO DAY COACHES OR CHAIR CARS.

Passengers will be required to pay seat or berth fare.

CALIFORNIA AND MEXICO EXPRESS

Trains No. 1 and 2 carry Pullman palace and tourist sleepers between Chicago and San Francisco, Los Angeles, El Paso and the City of Mexico, dining cars between Chicago and Kansas City, free reclining chair cars between Chicago and El Paso, west of Kansas City meals are served at the famous Harvey eating houses.

CONNECTIONS.

Close connections are made in Union Depots at Chicago, Kansas City, Denver, Colorado Springs and other principal stations on the "Santa Fe Route" with all lines diverging. For further particulars call on any agent of the "Santa Fe Route" or the undersigned.

H. S. LUTZ, Agent, Santa Fe.
G. T. NICHOLSON, G. P. A., Chicago.
City Ticket Office, First National Bank Building.

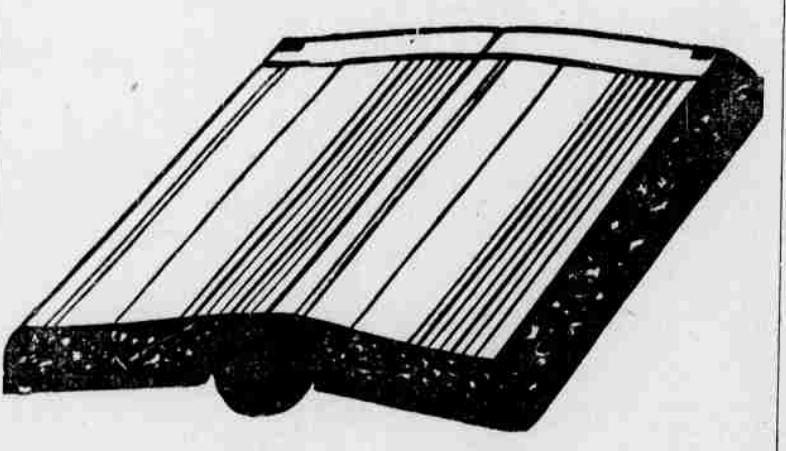
We call especial attention to our celebrated Frey's patent flat opening blank book

We make them in all manner of styles.

We bind them in any style you wish.

We rule them to order

We are the Sole Makers



JOB WORK

Of all kinds done with neatness and despatch. We carry a large and complete line of commercial stationery, consisting of wedding cards, business cards, programs, etc.

BOOK WORK

We are the best equipped establishment in the whole southwest for this line of work, and our unequalled facilities enable us to turn out work at the lowest possible figures.

LEGAL BLANKS

We carry a full and complete line of all Legal Blank, including those required by the Brand Law enacted by the last legislature.

NEW MEXICAN PRINTING COMPANY.

Your Local Ticket Agent

Will tell you that when you are going east there is no road better adapted to your wants than the . . .

• WABASH •

Free reclining chairs on all trains. Excellent meal stations. (Dining cars for those who prefer them.)

Elegant drawing room cars. Sleeping cars of the latest design. For full information apply to your ticket agent, or—

J. S. CRANE, G. P. A.
C. RAMSEY, JR., Gen'l Mgr.

Santa Fe Route—California Limited
Leave Chicago 8:00 p. m. Wednesdays and Saturdays, Kansas City 9:50 a. m. and Denver, 5:40 p. m. Thursdays and Sundays, reaching Los Angeles in 72 hours from Chicago. Connecting train from San Francisco via Mojave. Returns Mondays and Thursdays.

Equipment of superb vestibuled Pullman palace sleepers, buffet smoking car and dining car. Most luxurious service via any line.

Another express train carrying palace and tourist sleepers leaves Chicago and Kansas City daily for California.

Inquire of local agent or
G. T. NICHOLSON, G. P. A.,
A. T. & S. F. Ry.,
Chicago.

METEOROLOGICAL.

U. S. DEPARTMENT OF AGRICULTURE
WEATHER BUREAU OFFICE OF OBSERVER
Santa Fe, December 21, 1896.

Time of day: 8:50 a. m. 23.42 23.40 23.40 NE 10 Clear

SOCIETIES.

Montezuma Lodge No. 1, A. F. & A. M. Regular communication first Monday in each month at Masonic Hall at 7:30 p. m.

THOMAS J. CURRAN, W. M.
W. E. GRIFFIN, Secretary.

Santa Fe Chapter No. 1, R. A. M. Regular convocation second Monday in each month at Masonic Hall at 7:30 p. m.

P. E. HARRISON, H. P.
T. J. CURRAN, Secretary.

Santa Fe Council No. 3, R. & S. M. Regular communication first Monday in each month at Masonic Hall at 8:30 p. m.

MAX. FROST, T. I. M.
ED. E. SLIDDER, Recorder.

Santa Fe Commandery No. 1, K. T. Regular convocation fourth Monday in each month at Masonic Hall at 7:30 p. m.

W. S. HARRISON, R. C.
T. J. CURRAN, Recorder.

WOODMEN OF THE WORLD.
Coronado Camp No. 3, Woodmen of the World, meets on the second Thursday evening of each month at 8 o'clock in Astor hall.

Visiting sovereigns are fraternally invited.

J. B. BRADY, Consul Comdr.
ADDISON WALKER, Clerk.

The PECOS VALLEY of . . . NEW MEXICO

OFFERS unequalled advantages to the farmer, fruit grower, live stock raiser, dairyman, bee-keeper, and to the home-seeker generally.

The soil of the Pecos Valley is of high average fertility, and under terrigation produces bountiful crops of most of the grasses, grains, vegetables and fruits of the temperate and some of those of the semi-tropical zone. In such fruit as the peach, pear, plum, grape, prune, apricot, nectarine, cherry, quince, etc., the Valley will dispute for the pre-eminence with California; while competent authority pronounces its upper portion in particular the finest apple country in the world.

Enormous yields of such forage crops as alfalfa, sorghum and Egyptian corn make the feeding of cattle and sheep and the raising and fattening of hogs a very profitable occupation.

The cultivation of canas—a tanning material of great value—is becoming an important industry in the Pecos Valley, a home market having been afforded for all that can be raised, at a price yielding handsome profit.

The climate of the Pecos Valley has no superior in the United States, being pre-eminently health and health restoring.

Land with perpetual water-rights are for sale at low prices and on easy terms. The water-supply of the Pecos Valley has no equal in all the arid region for constancy and reliability; and this with the superb climate, productive soil and the facilities afforded by the railway which extends through the Valley's entire length, will cause these lands to enjoy a constant, and at times, rapid increase in value.

The recent completion of the Pecos Valley Railway to Roswell will cause the more rapid settlement and development of the upper portions of the Valley, including the rich Felix section. The company has recently purchased many of the older improved farms about Roswell, and has now for sale lands to meet the wants of all—raw lands, partially improved lands, as well as farms with houses, orchards and fields of alfalfa and other crops. In the vicinity of Roswell several pieces of land have been divided into five and ten acre tracts, suitable for orchards and truck farms in connection with suburban homes. Certain of these tracts are being planted to orchards, and will be cultivated and cared for by the company for three years at the end of which period they will be handed over to the purchasers. Write for pamphlet fully describing the terms and conditions on which these several classes of tracts are sold.

FOR FULL INFORMATION REGARDING THE PECOS VALLEY WITH COPIES OF ILLUSTRATED PUBLICATIONS ADDRESS

The Pecos Irrigation and Improvement Company,
Eddy, N. M., or Colorado Springs, Colo.

PROFESSIONAL CARDS.

J. B. BRADY,
Dentist. Rooms in Kahn Block, over Spitz' Jewelry Store. Office hours, 9 to 12 a. m.; 2 to 5 p. m.

ATTORNEYS AT LAW.

MAX FROST,
Attorney at Law, Santa Fe, New Mexico.

JOHN P. VICTORY,
Attorney at law, Santa Fe, N. M. Will practice in all the courts.

GEO. W. KNAEDEL,
Office in Griffin block. Collections and searching titles a specialty.

EDWARD L. BARTLETT,
Lawyer, Santa Fe, New Mexico. Office, Catron block.

E. A. FISKE,
Attorney and counselor at law, P. O. Box "F," Santa Fe, N. M., practices in supreme and all district courts of New Mexico.

T. F. CONWAY, W. A. HAWKINS,
CONWAY & HAWKINS,
Attorneys and counselors at law, Silver City, N. M. Prompt attention given to all business entrusted to our care.

A. B. RENEHAN,
Attorney at Law. Practices in all territorial courts. Commissioner's court of claims. Collections and title searching. Office with E. A. Fiske, Spiegelberg block Santa Fe.

RIO GRANDE & SANTA FE

AND

Denver & Rio Grande Railroads.

THE SCENIC LINE OF THE WORLD

Time Table No. 40.

[Effective October 18, 1896.]

| EAST BOUND | WEST BOUND |
|---|---|
| No. 428. | No. 425. |
| 10:30 a. m. Lv. Santa Fe, Ar. 3:45 p. m. | 12:35 p. m. Lv. Espanola, Ar. 12:30 p. m. |
| 12:35 p. m. Lv. Espanola, Ar. 12:30 p. m. | 1:27 p. m. Lv. Embudo, Ar. 12:20 p. m. |
| 2:48 p. m. Lv. Huerfano, Ar. 11:40 a. m. | 4:16 p. m. Lv. Three Pledras, Ar. 10:47 a. m. |
| 4:16 p. m. Lv. Three Pledras, Ar. 10:47 a. m. | 6:05 p. m. Lv. Antonito, Ar. 8:20 a. m. |
| 7:20 p. m. Lv. Alamosa, Ar. 7:55 a. m. | 11:15 p. m. Lv. Salida, Ar. 8:10 a. m. |
| 8:20 a. m. Lv. Pueblo, Ar. 12:12 p. m. | 3:01 a. m. Lv. Florence, Ar. 12:12 p. m. |
| 8:25 a. m. Lv. Pueblo, Ar. 12:15 p. m. | 8:25 a. m. Lv. Colorado Spgs., Ar. 8:20 p. m. |
| 8:50 a. m. Ar. Denver, Ar. 8:20 p. m. | |

Connections with main line and branches as follows:
At Antonito for Durango, Silverton and all points in the San Juan country.
At Alamosa for Jimtown, Creede, Del Norte, Monte Vista and all points in the San Luis valley.

At Salida with main line for all points east and west, including Leadville.
At Florence with F. & C. O. R. R. for the gold camps of Cripple Creek and Victor.

At Pueblo, Colorado Springs and Denver with all Missouri river lines for all points east.
Through passengers from Santa Fe will have reserved berths in sleeper from Alamosa if desired.

For further information address the undersigned.

T. J. HALL, General Agent,
Santa Fe, N. M.
S. K. HOOPER, G. P. A.,
Denver, Colo.

Henry Hinges.
Make Direct Connections With
D. & R. G. TRAINS
Both Ways.

56 Miles Shortest Stage Line to Camps

ANTONITO AND LA BELLE

Overland Stage and Express Company.

U. S. Mail. RUN DAILY BETWEEN LA BELLE AND ANTONITO, CONNECTING WITH TRI-WEEKLY STAGE AND MAIL AT COSTILLA.

Best of Service—Quick Time. Arrive at La Belle Daily 7 p. m.

COAL & TRANSFER, LUMBER AND FEED.

All kinds of Rough and Finished Lumber; Texas Flooring at the lowest Market Price; Windows and Doors. Also carry on a general Transfer Business and deal in Hay and Grain.

DUDROW & DAVIS, Props.

The Short L

Santa Fe Route.

To all Points North, East, South and West.

Through Pullman and Dining Car Service on magnificent vestibuled trains, composed of Pullman Palace Sleepers, elegant dining cars, reclining chair cars, free, running through without change between Chicago and the Pacific coast. Ask or address agents below for time cards and illustrated matter pertaining to the "Santa Fe Route."

H. COPLAND
General Agent, El Paso, Tex.

H. S. LUTZ
Agent, Santa Fe, N. M.

The Best Equipped Office in Southwest

In the night the car off catches
A dreamy musical sound.
Tis the American Lever Watches
Sold at One Dollar the whole year
around.

He has knives at various prices
To suit rich and poor alike.
In the present financial crisis,
No one need go on a strike.

The light so brightly gleaming
From Goebel's, shines more and
more
Over the land its rays go streaming,
Bringing customers to his store.

Do not let cares or troubles
On the stove your food e'er burn
Meander gently down to Goebel's
And about asbestos mats you'll
learn.

W. H. GOEBEL.

Muller & Walker,

TABLE LUXURIES & BAKERY

TELEPHONE 53

COLD'S GENERAL STORE,
—DEALER IN—
**DRY GOODS, CLOTHING, BOOTS AND
SHOES, GROCERIES & PROVISIONS.**
TELEPHONE NO. 6. FREE DELIVERY.
ABE COLD, SAN FRANCISCO STREET,
SANTA FE, NEW MEXICO.

David S. Lowitzki,
LARGEST STOCK IN TOWN
CHEAPEST IN TOWN
BEST ASSORTMENT

Centrally Located.
Lower Frisco Street.
First Furniture Store you Come To.

**FURNITURE
QUEENSW'RE**

My Holiday Furniture
Just Received.

**Prices never before
Equaled in City of Santa Fe.**

I will furnish you from the parlor to the
kitchen on easy payments. Highest cash
price paid for second hand goods. I carry
a full line of picture frames and moldings.

Time Saved is Money Earned.
This is good business philosophy, and you know it. Mr. Thomas
A. Edison had you in mind when he invented the

Edison Mimeograph

that simple, serviceable reproducing device that is twin brother
to the typewriter. With it you can increase one typewritten origi-
nal 150 fold, and rapidly too. With it you can take 300 perfect
fac-similes from one hand written original. With it you can pile
up 1500 copies from one drawing, or one sheet of music, or any
thing of like character, and all perfect.

PINNEY & ROBINSON,
TYPEWRITERS, MIMEOGRAPHS AND SUPPLIES,
18 N. SECOND AVE., PHOENIX, ARIZ.
ESTABLISHED 1897.

THE FOUR DOOMED ASSASSINS

Friends of Law and Order Rejoicing
Over Satisfactory Status of
Borrego Case.

SUPREME COURT'S JUDGMENT APPLAUDED

Statement of the Case As It Appeared
in the Court of Last Resort—Regu-
larity of Proceedings in Terri-
torial Courts—End Near.

The New Mexican's wired announce-
ment from Washington, last evening, that
the United States supreme court had
passed upon the proceedings of the New
Mexico courts in the case of Francisco
Gonzalez y Borrego et al., convicted and
sentenced to be hanged for the brutal
murder of Francisco Chavez; had pro-
nounced said proceedings regular, and
had affirmed the judgment of the New
Mexico supreme court in the premises.
caused sincere rejoicing among all
friends of law and order in this com-
munity. The fact that ex-Sheriff Chavez
was cruelly assassinated in this city of
the Holy Faith four years and seven
months ago, and that the perpetrators
of the atrocious crime have evaded jus-
tice during these dreary years, has long
been felt to be an ugly stain upon the
fair name of this city and county, and
much gratification is expressed that the
dark stain is likely now to be removed
and that justice seems certain to
take its course without further unseemly
delay.

Editorially to-day the New Mexican
briefly recites the fatiguing litigation that
has so far saved the necks of the convicted
and condemned assassins of Francisco
Chavez and has led up to this righteous
decision of the court of last resort. Of
course, until the final opinion of the United
States supreme court is received by mail,
it is utterly impossible fully to elucidate
the status of the case; but it may be ex-
plained that the appeal, passed upon by
the court of last resort was from the
judgment of the territorial supreme court
denying the condemned men release on a
writ of habeas corpus, and no competent
lawyer believes that the federal courts
will grant further delay.

The case as it appears in the United
States supreme court is briefly stated as
follows:

"The appellants were indicted, tried by
jury, and convicted for the crime of mur-
der, under the laws of the territory of
New Mexico, in and by the district court
of the 1st judicial district hold within
and for the county of Santa Fe, in that
district, and were sentenced to death by
the court in accordance with the statute
of that territory; which judgment and
sentence was affirmed by the supreme
court of the territory upon a writ of
error sued out by appellants, and the
date of execution was fixed by that court
for October 15, 1896.

"After the affirmation of the judgment,
the said supreme court issued a writ of
habeas corpus to the appellee, the sheriff
of said county, in whose custody the ap-
pellants were held under a mittimus is-
sued to him in pursuance of the sentence,
upon a petition of the appellants, in sub-
stance alleging themselves to be illegally
restrained of their liberty by the appellee
as such sheriff, and upon the hearing had
upon the return made by the appellee to
the writ, and the reply made by the ap-
pellants to such return, upon the facts
therein appearing, the said court ordered
that the writ of habeas corpus be dis-
charged, and the petitioners therein, the
appellants here, be remanded to the cus-
tody of the appellee; all of which pro-
ceedings were under the habeas corpus
act of the territory.

"From this judgment and decision of
said supreme court discharging the writ
and remanding them, the appellants
prayed an appeal to this court, which was
refused by said territorial supreme court
on September 26, 1896.

"Upon application of the petitioners
in said habeas corpus proceeding, made
upon the record of the same presented to
him, an associate justice of this court, in
vacation, made an order awarding the ap-
pellants, and in pursuance of the New Mex-
ico statute upon the subject thereafter set
forth. The facts as stated appear in the
record of the proceedings had in the
habeas corpus case before the territorial
supreme court filed upon this appeal to
which the appellee asks to refer for a
more detailed statement."

It may be added that, after the case
had been passed upon by the territorial
supreme court and the death sentence of
the district court had been affirmed, the
attorneys for the defendants pretended
to have made the discovery that the de-
fendants had not, according to the record,
been properly arraigned in the district
court before Judge Hamilton; that the
district court subsequently corrected its
record on the testimony of its sworn offi-
cers so as to show the fact of formal ar-
raignment, and that the supreme court of
New Mexico accepted a corrected record
showing the fact of formal arraignment
and reaffirmed its original judgment. It
is presumed that the regularity of this
proceeding and the right of Judge Hamil-
ton to preside at the trial in the district
court were the principal questions passed
upon by the United States supreme court.
Otherwise no color of a ground for the
appeal existed.

It is now contended that Mr. Catron's
bill, pending in congress, granting ap-
peals from territorial to the federal
courts in criminal cases, originally intro-
duced to thwart the ends of justice in
the Folson case, may become a law in
time to save the murderers of ex-Sheriff
Frank Chavez for months longer. Per-
sons who talk in this way are holding out
an illusive hope to the relatives and friends
of the doomed men. This measure has
not yet become a law, and it is unreason-
able to suppose that it will ever become
such, as many influential members of
both houses of congress have indicated
that they are heartily tired of having
their attention distracted from questions
of public moment by Mr. Catron's purely
personal and petty measures. Besides
congress will adjourn to-day and will not
meet again until January 4.

The mandate of the United States su-
preme court in the premises may be ex-
pected from Washington in a few days,
and, when the New Mexico supreme court
meets in adjourned regular session on
January 4, an order carrying into execu-
tion the death sentence will doubtless be
promptly promulgated. Under the law
the sentence can not be made effective
until twenty days after the date thereof.

ROUND ABOUT TOWN.

Flow's candies are a good addition to a
Christmas gift. Only at Fischer & Co's.
In the absence of a quorum the city
council held no meeting last night.

The Santa Fe board of trade will hold
an important meeting to-morrow even-
ing at 8 o'clock.

U. S. weather bureau forecast for New
Mexico: Fair to-night and Wednesday;
stationary temperature.

A baby girl was born to Mrs. H. A.
Schneider, formerly Miss Annie Wyn-
koop, in Denver on Friday last. They
are both reported as doing well.

Mr. Geo. L. Wyllys and Miss May Keller
will be married at the Presbyterian church
at 8 o'clock this evening. They leave
immediately on a trip to Kansas City.

A 2 cent postage stamp is required to
carry the New Mexican's recent im-
migration supplement through the mails.
It weighs heavy in paper as well as in
timely territorial information.

Bicyclists who insist on wearing
short dresses these gusty mornings should
use sinkers. A few heavy shot in the
skirt hem would doubtless relieve some
of them of many embarrassing situa-
tions.

Sheriff-elect H. C. Kinsell was up from
Cerrillos last evening. Speaking of the
U. S. supreme court decision in the Bor-
rego case he said to a New Mexican re-
presentative: "I am here to execute the
laws and if the courts direct me to ex-
ecute these men you can just say that the
business will be attended to in good
shape."

Down They Go.

All our 40c and 60c candies now go at
cost, 20c and 25c per pound; stick can-
dies, 10c per pound; 4 pounds hickory
nuts, 25c; peanuts, 2 pounds 25c; all
other kinds, 15c per pound; 2 quarts
cranberries, 25c; bananas, 25c per dozen;
home-made mince meat, 2 pounds 25c;
2 dozen eggs, 45c; 2 pounds best creamery
butter, 45c; German summer sausage, 10c
per pound; full cream cheese, 2 pounds
25c; excelsior farm sausage, 15c per pound;
pigs feet, 10c per pound; rabbits, 2
pounds 25c, and all other goods go at
cost. All goods guaranteed strictly first
class and fresh.

THE MODEL.

Buy a box of fine stationery for a
Christmas gift, at Fischer & Co's.

Stones for Unmarked Graves.

Superintendent Joseph, of the National
cemetery at Santa Fe, has received notice
from the quartermaster-general's office in
Washington that 185 marble head-stones
have been ordered from Lee, Mass., for
all the unmarked graves in the National
cemetery here. Superintendent Joseph
is authorized to receive these stones at
the depot, transfer them to the cemetery
and employ the necessary labor to put
them up in an enduring manner.

Holiday Vacation of City Schools.

The city schools will close on Thursday
afternoon until Monday morning, Janu-
ary 4.

Interesting exercises preliminary to the
holiday vacation will take place at the
kindergarten at 1 o'clock on Thursday
afternoon.

There will be special public school
exercises, free to all at the university
building on Wednesday afternoon, begin-
ning at 1:30 o'clock, by the pupils of Miss
Dickson, Mrs. Brown and Mr. Jenkins.
Parents and others interested are most
cordially invited to attend.

Miss Call's pupils will have their Christ-
mas entertainments at their own rooms in
the 2d ward (little brick school), to-
morrow, Wednesday, December 28, com-
mencing at 1:30 sharp. Members of the
school board, parents and friends are
cordially invited to be present. There
has been a slight change made in the
program. Remember all are welcome.

Barrett & Barrett's York state pure ap-
ple cider, 50 cents per gallon; two gallons,
95 cents.

"El Sidel" clear Havana cigar, 5c
at Scheuch's.

PERSONAL.

Hon. L. A. Hughes is visiting Albu-
querque.

Mrs. J. L. Zimmerman and her little
daughter, Nora, have returned to Santa
Fe from Las Vegas.

Mr. H. B. P. Hollyday, of Washington,
inspector of U. S. surveys, returned last
night from a trip to the Cabazon region.

Dr. Joseph Richards was in from Cer-
rillos yesterday afternoon, but he forgot
to call on the New Mexican. Just won
his suit, too!

Mr. O. N. Marron, clerk of the district
court at Albuquerque, has returned home
from San Diego, accompanied by his sis-
ter and niece.

Mr. A. J. Loomis, editor of the Silver
City Eagle, and chief deputy collector of
internal revenue under Collector Shan-
non, has gone to Silver City to spend the
holidays.

At the Bon Ton: George C. Meeks, H.
C. Schurtz, Denver; Harry Lemke, Rich-
ard Conner, D. Jamison, La Belle; Chas.
Burnett, El Paso; Antonio Jose Romero,
G. M. Bullock, Madrid.

At the Palace: Geo. W. Shock and
wife, Mrs. S. E. Shaeffer, Philadelphia;
L. L. Lyon, J. B. Lazear, Denver; H. C.
Kinsell, Cerrillos; H. B. P. Hollyday,
Washington; L. O. Bannon, J. E. Mosley
and wife, J. W. Biggs, H. A. Colt, Okla-
homa.

Just received, large shipment of the fa-
mous Berwick Bay fresh oysters, 2 1/2 doz.
extra select in each can. They go at
cost. Per can, 45c; two cans, 85c; six
cans, \$2.40. These are the best oysters
in the market. THE MODEL.

The best 25-cent meals to be had in the
city at the short order lunch counter at
the Bon Ton.

The Exchange Hotel,

Best Located Hotel in City.
J. T. FORSHA, Prop.

\$1.50 PER DAY. \$2

Special Rates by the Week or Month
for Table Board, with or without
rooms.
N. E. Corner of Plaza.

WHAT THEY SAY.

The special immigration edition of the
Santa Fe New Mexican, profusely illus-
trated, was issued from that office on Sat-
urday, and too much can not be said in
its praise. It contains a world of timely
information about New Mexico, every
nook and corner of it, and the copy at
hand will be carefully laid aside for fu-
ture handy reference.—Las Vegas Optic.

The New Mexican of last Saturday is a
remarkable paper in every way. It fact,
it is one of the best, if not the very best,
ever printed in the territory. The work
of compiling such a paper, the work of
months of hard and intelligent labor. A
large edition was printed, and copies will
be sent all over the country, which can
not fail in drawing attention to the re-
sources of New Mexico.—Albuquerque
Citizen.

The immense illustrated immigration
edition of the Santa Fe Daily New Mex-
ican is now ready for distribution.
Every property owner and business man
in the territory, and in fact, all those who
contemplate remaining permanently in
New Mexico, should see to it that an
order reaches the publishers for a liberal
number of copies. This is the proper
way to build up and thicken the
Italy of this continent. Sunshine and
health are but two small items of what we
have to offer the thousands in search of
homes. Help to send this edition far
and near. By doing so, suffering human-
ity will be bettered and our hundreds of
square miles of vacant land will become
dotted with new homes, occupied by hap-
py people.—San Marcial Bee.

Now is your chance to get candies, nuts
and table luxuries of all kinds at cost.
—THE MODEL.

PIE-COUNTER CRUMBS.

Pedro Peres and Sol. Luna, who are
Delegates Catron's candidates for the of-
fice of governor and U. S. marshal, re-
spectively, are running mates in the way
of circulating petitions. Both have pe-
titions out in the same envelope. Ex-
-Sheriff Charlie Cooklin was circulating
them in Santa Fe last night.

And now the Socorro Advertiser chips
in: "The efforts of Mr. George H. Wal-
lace to swing the wool men in line for his
candidate may be overdone. Mr. Wal-
lace is probably not aware of the fact
that Republican tariffs are, in these days,
not constructed for the benefit of the
actual producer, but for the millionaire
manufacturer, and when he gets too ear-
nest in the cause of that class, intended
to be the victims of the bunco game, the
actual beneficiaries will turn him down.
His recent letters will defeat him on the
above grounds."

Oh! Gen. Bartlett is preserving a dig-
nified, judicial silence! The other day
the New Mexican spoke of the general as
an applicant for a judgeship, or, failing
in that, he would accept the surveyor-
generalship. Now a "Santa Fe attorney"
tells about it through a communication to
the Las Vegas Optic. He says: "Gen.
Bartlett is not a candidate in the sense
of making a bid or a scramble for the
high office named. At the proper time
his name will be presented to the admin-
istration as being eminently and every
way fully qualified for the position and
his appointment will be asked by a strong
local influence and by still stronger out-
side influence. Gen. Bartlett himself is
not doing anything, nor will he do any-
thing, that in any manner would lower
his own respect or the dignity of the of-
fice, which many influential and good cit-
izens of New Mexico believe he would fill
with the greatest success. He is not a
candidate for any other office."

Rooms to rent, furnished or unfur-
nished. Mrs. B. M. Thomas.

Illustrated Special Edition New Mexican

Now on sale. Secure a
copy and send it to your
friend at the east. Price 10
cents; ready for mailing 12
cents.

SOCIETIES.

Montezuma Lodge No. 1, A.
F. & A. M. Regular com-
munication first Monday in
each month at Masonic Hall
at 7:30 p. m.
THOMAS J. CURRAN, W. M.
W. E. GRIFFIN, Secretary.

Santa Fe Chapter No. 1, R. A.
M. Regular convocation second
Monday in each month at Ma-
sonic Hall at 7:30 p. m.
P. E. HANBORN, H. P.

T. J. CURRAN, Secretary.

Santa Fe Council No. 3,
R. & S. M. Regular con-
vocation second Monday
in each month at Masonic
Hall at 8:30 p. m.

MAX. FROST, T. I. M.
ED. E. STUEBE, Recorder.

Santa Fe Commandery No. 1,
K. T. Regular convocation fourth
Monday in each month at Ma-
sonic Hall at 7:30 p. m.
W. S. HANBORN, E. C.

T. J. CURRAN, Recorder.

WOODMEN OF THE WORLD.
Coronado Camp No. 3. Woodmen of the
World, meets on the second Thursday
evening of each month at 8 o'clock in Asian hall.
L. O. C. F. Visiting sovereigns are fraternally
invited.

J. B. BRADY, Consul Comdr.
ADDRESS WALKER, Clerk.

Santa Fe Commandery No. 1,
K. T. Regular convocation fourth
Monday in each month at Ma-
sonic Hall at 7:30 p. m.
W. S. HANBORN, E. C.

T. J. CURRAN, Recorder.

WOODMEN OF THE WORLD.

Coronado Camp No. 3. Woodmen of the
World, meets on the second Thursday
evening of each month at 8 o'clock in Asian hall.
L. O. C. F. Visiting sovereigns are fraternally
invited.

J. B. BRADY, Consul Comdr.
ADDRESS WALKER, Clerk.

Santa Fe Commandery No. 1,
K. T. Regular convocation fourth
Monday in each month at Ma-
sonic Hall at 7:30 p. m.
W. S. HANBORN, E. C.

T. J. CURRAN, Recorder.

WOODMEN OF THE WORLD.

Coronado Camp No. 3. Woodmen of the
World, meets on the second Thursday
evening of each month at 8 o'clock in Asian hall.
L. O. C. F. Visiting sovereigns are fraternally
invited.

J. B. BRADY, Consul Comdr.
ADDRESS WALKER, Clerk.

Santa Fe Commandery No. 1,
K. T. Regular convocation fourth
Monday in each month at Ma-
sonic Hall at 7:30 p. m.
W. S. HANBORN, E. C.

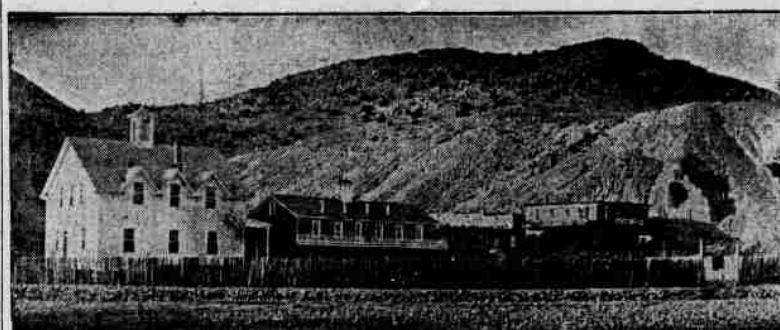
T. J. CURRAN, Recorder.

WOODMEN OF THE WORLD.

S. SPITZ,
MANUFACTURER OF
GOLD AND SILVER FILIGREE JEWELRY,
DEALER IN
**DIAMONDS,
WATCHES,
CLOCKS AND
SILVERWARE.**

Diamond mountings of all kinds and settings made to order by
first-class workmen and at reasonable prices.
Do not fail to look over the new line of leather belts and combined
pocket-books ornamented with sterling silver.

OJO CALIENTE (HOT SPRINGS.)



THESE Celebrated Hot Springs are located in the midst of the Ancient
Chiricahua, twenty-five miles west of Taos, and fifty miles north of
Santa Fe, and about twelve miles from Barrancas Station on the Denver
& Rio Grande Railway, from which point a daily line of stages run to the
Springs. The temperature of these waters is from 90° to 125°. The gases
are carbonic. Altitude 5,600 feet. Climate very dry and delightful the year
around. There is now a commodious hotel for the convenience of in-
valids and tourists. These waters contain 1600.34 grains of alkaline salts
to the gallon; being the richest Alkaline Hot Springs in the world. The
efficacy of these waters has been thoroughly tested by the miraculous cures
attested to in the following diseases:—Paralysis, Rheumatism, Neuralgia,
Consumption, Malaria, Bright's Disease of the Kidneys, Syphilis and
Mercurial Affections, Scrofula, Catarrh, La Grippe, all Female Com-
plaints, etc., etc. Board, Lodging and Bathing, \$2.50 per day. Reduced
rates given by the month. For further particulars address—

ANTONIO JOSEPH, Prop.,
Ojo Caliente, Taos County, New Mexico.
This resort is attractive at all seasons and is open all winter.
Passengers for Ojo Caliente can leave Santa Fe at 11:15 a. m.
and reach Ojo Caliente at 6 p. m. the same day. Fare for the
round trip from Santa Fe to Ojo Caliente, \$7.

GROCERIES, FEED AND FLOUR . . . NO. 4 BAKERY.

H. B. CARTWRIGHT & BRO. PROPRIETORS

First impressions are the most
lasting. Remember this when
preparing to receive guests at
dinner.

ARMOUR'S WHITE LABEL SOUPS

Can only be equalled by the most skilled
chefs. We shall be pleased to furnish them
at 30c PER QUART CAN, sufficient for five
persons.

For a roast nothing could be nicer or more
appropriate to the season, than one of our
fat turkeys with cranberry sauce.

In vegetables, if you have never tried our
DEW DROP BRAND, of whole tomatoes,
Maine corn, stringless beans, sifted peas and
mammoth asparagus, they will be a revela-
tion to you.

For desert, we can supply you with both
fresh and canned fruits, nuts of all kinds, rai-
sins, bon-bons, plum pudding in cans, pies
and cakes.

TELEPHONE 4

FIRST NATIONAL BANK

Santa Fe, New Mexico.
Designated Depository of the United States
R. J. Palen - - - President
J. H. Vaughn - - - Cashier