

10-15-1904

Santa Fe New Mexican, 10-15-1904

New Mexican Printing Company

Follow this and additional works at: https://digitalrepository.unm.edu/sfnm_news

Recommended Citation

New Mexican Printing Company. "Santa Fe New Mexican, 10-15-1904." (1904). https://digitalrepository.unm.edu/sfnm_news/2090

This Newspaper is brought to you for free and open access by the New Mexico Historical Newspapers at UNM Digital Repository. It has been accepted for inclusion in Santa Fe New Mexican, 1883-1913 by an authorized administrator of UNM Digital Repository. For more information, please contact disc@unm.edu.

A ROUSING RATIFICATION

Given Governor Otero and Senator Andrews by Taos Republicans Thursday Night.

NO FACTIONAL SPIRIT

Rather a Hard Trip, But Fraught With Good Results—Several Fine Speeches.

"The campaign party, led by Governor Otero and Senator W. H. Andrews, Republican nominee for delegate to Congress, met with a reception in this town last night, the like of which has never been equalled," says a letter dated October 14, received from Taos.

"Owing to bad roads, caused by heavy rains, it was nearly ten o'clock when the carriages containing the distinguished guests and the Santa Fe band finally reached the town. For miles in the distance, sky rockets could be seen as they were set off to apprise the travelers of the welcome in store for them. No sooner had the carriages entered the town limits than a huge bon-fire was lighted and the Plaza covered with burning red lights. As the carriages raced into the Plaza a cannon was fired several times as a salute and the immense crowd gathered gathered around, making it difficult to alight.

"Outriders reached the party five miles from the town and galloped back with the news of when the guests could be expected. Meals were ready for the party but a handshaking reception lost another half hour, the people simply refusing to allow Governor Otero and Senator W. H. Andrews to eat before they had each individually welcomed them.

"In the meantime the band secured its supper and played while the speakers were at table. The screen door at the head of the dining hall was packed with curious faces, who every now and then shouted loudly for the appearance of the guests. After a hurried supper, the hall was cleared and benches placed for the audience. A platform is one of the permanent fixtures of the room, which was very convenient for the occasion.

"No sooner had the last person laid down his fork than the crowd broke into the hall. Many assisted in clearing away the tables and in less than three minutes standing room was at a premium.

"Dr. T. P. Martin called the meeting to order, a committee being at once selected to wait on the guests in the parlors and escort them to the hall. The entrance was spectacular. It was difficult even to gain admittance to the room because of the number who were crowded about the door. Never before have the people of any county in the Territory entered so heartily into the spirit of a meeting. To say that the reception was enthusiastic is placing it in too mild form. Every time the name of Otero or Andrews was mentioned cheers rang out true and strong. The band constantly serenaded and the speakers were repeatedly interrupted by cries of "That's right," "Give it to 'em," "We are for you!"

"Governor Otero made the speech of his life. He thanked the citizens of Taos County for their cordial welcome and it was clearly evident that the words were not those formal superfluous expressions common in many campaigns.

"Referring to the Rodey Independent movement, the Governor said: 'I refuse to believe that Mr. Rodey will take such a mad course as the Democrats and certain dissatisfied members of our party are endeavoring to have him do. It could have no visible effect on the campaign and would only serve to injure this man who has twice been honored by the Republican party of this Territory with the highest position it can give. I am confident that on the eighth day of November Mr. Rodey will be supporting the Hon. W. H. Andrews in his candidacy.'

The Governor then referred to the criticisms made by the Democratic stump speakers of the Territorial administration. He discussed this matter in an able, clear manner, showing how charges of increased indebtedness and extravagance were false on the face of the public records, open to all for inspection.

"The candidate was then introduced by the Governor as the man who is 'doing things' for New Mexico. Here the name of Senator Andrews received a long ovation, the Governor continuing his introduction, as soon as possible, by describing several of those improvements in this Territory directly due to the efforts of Mr. Andrews.

"Senator Andrews made his usual matter of fact, plain business speech, short and to the point but really entailing the entire campaign in a few words. The people like these short speeches. They enjoy hearing in a concrete form what can be expected. The fact that the candidate does not mince words was in marked contrast

SERIOUS WRECK ON RIO GRANDE

At Beaver Creek, Colorado—Passenger and Freight Trains Meet Head-On.

Pueblo, Colo., Oct. 15.—Two men are believed to be fatally hurt and six others are reported badly injured as the result of a head-on collision on the Rio Grande Railroad between eastbound California limited passenger train No. 6 and a west bound freight train at Beaver Creek, 28 miles west of Pueblo, this morning. The first report indicated many lives had been lost, but this proved to be untrue.

KING GEORGE OF SAXONY DEAD

End Came Today—Eldest Son Succeeded Father to Throne and Has Assumed Charge.

Dresden, Saxony, Oct. 15.—King George died this morning. The new king, Frederick Augustus, the eldest son of the deceased monarch, received the ministers and officers of the royal household and fixed the period of mourning at 24 weeks.

SUDDEN DEATH OF MINING MAN

James Lynch, a Pioneer of the Elizabethtown District Succumbs at Springer.

A message received in this city today conveyed the information that James Lynch, a pioneer mining man of the Elizabethtown district had died suddenly at his home in Springer, of pneumonia. Lynch was well known in this city and in fact all over the Territory. He went to Elizabethtown in 1873 with his two brothers, both of whom are now deceased. He was the owner of the famous Aztec mine from which nearly \$1,000,000 has been taken. The deceased was president and the principal owner of the American Savings Bank of Trinidad, Colorado, and was also the owner of the Lynch Block, one of the principal business blocks in that city. He was also the owner of extensive placer grounds at Elizabethtown and had other valuable mining properties in that section. He was noted for his kindness and deeds of charity.

ARTFUL MAKES WORLD'S RECORD.

Morris Park, Oct. 15.—White Plains handicap for two-year-olds was won by Artful. Time, 1:08. The time is now a new world's record for six furlongs, the best previous time being 1:08 1-4.

to the reports of a previous meeting held by an opposition candidate some few weeks before in the same city.

"Judge A. J. Abbott told a few amusing stories, discussed the several candidates, platforms and parties, national, Territorial and local, making an able, well delivered address which was well received by the audience, although the hour was rapidly approaching midnight.

"Alfred M. Bergere spoke about local conditions in Taos County before the present Republican administration and pointed out the improvements now noticeable. He recounted certain personal experiences with Senator Andrews, placing the hearers in closer touch with their candidate.

"Sheriff Alexander Read, candidate for council from the three northern counties, traveled from Tierra Amarilla overland to Taos and made a rousing speech in Spanish, which was cheered again and again. He also brought the news that O. L. Pollard had declined to run on the Democratic ticket for the council; that Elias Garcia would not run for sheriff and that Charles Daggett refuses to permit his name to be used for candidate for county commissioner from the Third district, on the Democratic ticket. Old Rio Arriba is good for one thousand and more majority for the Republican ticket from top to bottom on November 8th next.

"One remarkable feature of the meeting at Taos was the enthusiasm with which the Independent Republicans participated in the ratification. They outcried each other in cheering for Andrews and Governor Otero. Taos County can be relied upon for 300 and more Republican majority.

The campaign party left last evening at 8 o'clock on a special train over the Santa Fe Central for Torrance, from whence it proceeded to El Paso over the El Paso & Northeastern, and arrived there this morning. From El Paso it proceeded to Las Cruces where its members were present this afternoon at the Republican county convention of Dona Ana County and at a big ratification meeting this evening. In the party were Governor Otero, Senator W. H. Andrews, Judge A. L. Morrison, Chairman H. C. Benson, Judge A. J. Abbott, Jose D. Sena, A. M. Bergere, Alexander Read and A. S. Adams.

Scenic New Mexico.



CAMPING OUT IN NEW MEXICO.

RUSSIAN CAPITAL IS HEART-BROKEN

World Proclaimed Advance of Kuropatkin Has Ended in a Complete Rout—Horrible Carnage Marks Disaster—Japs Capture More Guns.

Unable to withstand the tremendous assaults of the Japanese, Kuropatkin has been forced back to his position north of the Shalke River after a battle of a most desperate and sanguinary character. Absolutely no official news of today's fighting has been given out at St. Petersburg, but a correspondent there of the Associated Press, after repeating unofficial but circumstantial reports said to originate in high places, cables that the public is convinced that Kuropatkin's advance is a complete disaster with such frightful losses that it will stagger Russia. Oyama reporting to Tokio says that the fighting continues, but that the Russians are retreating and the correspondent adds: "Kuropatkin is evidently crushing defeated." The Japanese commander estimates the Russian losses at 30,000.

St. Petersburg Denies Army Has Been Routed.

St. Petersburg, Oct. 15.—Unofficial reports from the battle field are more encouraging this morning. There has been no rout, but there is no question that the Russians have fallen back 20 miles. According to a private dispatch from Mukden, Kuropatkin checked the Japanese advance at the Shalke River. He crossed the river, extending from the west of the railroad eastward to Bensiapute.

Russian General Narrowly Escaped Death.

St. Petersburg, Oct. 15.—According to special dispatches received here, General Kuropatkin had a narrow escape from death during the fierce fighting of Wednesday night and Thursday for the possession of Temple Hill and the double horned mountain east of the railroad. With his staff he was personally directing the fight at this point. Orderlies were constantly galloping up with reports from other parts of the battle and carrying dispatches from other parts of the field to and from the telegraph and telephone stations, which were working behind the hills. This evidently attracted the attention of the Japanese, who cleverly unmasked some batteries, shells of which burst all around the distinguished group, compelling Kuropatkin to shift his position hastily and seek shelter. Russians Retiring Before Japanese Advance.

Field Headquarters, Second Japanese Army, Thursday, via Fusan, Korea.—Fuller division reports received here give increased importance to the victory achieved yesterday by the Japanese left army. Twenty-four Russian guns were captured when the retreat began, together with many rifles. The Russians lost heavily in the counter attacks, the Japanese loss being much smaller. The advance continued all day, the Russians retreating before it. Kuropatkin Personally Commanding.

London, Oct. 15.—A dispatch to the news agency from Tokio dated today says that as a result of Friday's sanguinary fighting, the center column of the Japanese left army succeeded in partly occupying Shalhe. The Russian main body fell back on the mountainous districts of the railroad. The

Russians around Bensiapute have fled in a northerly direction. The Japanese last night, the dispatch adds, engaged three Russian reserve divisions under the personal command of General Kuropatkin. The fighting was resumed this morning. Vital importance is attached at Tokio to the engagement at this point.

Mukden, Oct. 15.—News has been received here to the effect that one of the Russian eastern columns has overcome the desperate resistance of the Japanese and captured Lumin Pass, which opens a direct route to the right flank of the Japanese main position at Yental mines. If the report is true, Kuropatkin's plans may have succeeded and the Russians may have attacked the Japanese flank and rear. One more effort, it is asserted, and the Japanese must retreat with heavy loss from the Shalke River, or run the risk of being cut off from the army between the Shalke and Schill Rivers and annihilated.

Ten More Guns Captured.

Tokio, Oct. 15.—Heavy fighting continued yesterday and reports from the field last night indicate that the Japanese armies made distinct gains. General Oku captured ten guns, making his record 35, all told. Fighting continues in the vicinity of Bensiapute. The report does not mention the situation affecting the isolated Russian column.

Evidently Crushing Defeat.

Tokio, Oct. 15.—Field Marshal Oyama estimates the Russian casualties at about 30,000. The fighting continues, but the Russians are retreating. Kuropatkin is evidently crushing defeated.

Silence is Heartbreaking.

St. Petersburg, Oct. 15.—Silence of the Russian authorities at this critical hour is heartbreaking for the public. No single official word has been given out for over 24 hours and the public is convinced it can only mean that Kuropatkin's world proclaimed advance has ended in a complete disaster with such frightful losses that they will stagger Russia even after Liao Yang. Report of Victories From Home Government.

Washington, D. C., Oct. 15.—The Japanese legation today received the following cablegram from the home government at Tokio: "Marshal Oyama reports as follows: His Imperial Highness Kanin is now fighting on the left bank of the Taitse River at a point seven miles east of Bensiapute. Our attack and advance are progressing satisfactorily throughout at the front. Our left army captured ten more guns." The second cablegram reads as follows: "Marshal Oyama reports that throughout the entire fighting at the front of all of our armies the enemy was driven back to the right bank of the Shalhe River, thus totally destroying the enemy's plan of attack. The casualties of the enemy are estimated at 30,000 and the corpses which were buried by our men on Thursday exceed 2,000. Our trophies consist of a large number of rifles, ammunition

OFFICIAL MATTERS

Precious Metal Produced in New Mexico.

The director of the mint this week published his figures of the production of precious metals in New Mexico, during the year 1903. It shows a considerable falling off again, the total being only \$342,178—11,833 ounces of gold, valued at \$244,600; and 180,700 ounces of silver, valued at \$97,578.

Meeting of Irrigation Commission.

The Irrigation Commission of New Mexico was in session yesterday all day and until 12 o'clock last night. There were present G. A. Richardson, of Roswell, president; Frank Springer, of Las Vegas, and Arthur Seligman, of Santa Fe, secretary and treasurer. A great deal of routine business was transacted and a number of leases were examined and approved. Settlement was made with ex-treasurer G. W. Knaebel and the amounts due from the said treasurer to the funds of the commission were ascertained and fixed. The funds for their settlement have been paid in and the matter is now closed. The bond of the new secretary and treasurer, Mr. Seligman, was fixed at \$5,000, which was furnished and approved by the commission. The commission adjourned to meet again at the call of the president.

THREE KILLED IN EXPLOSION.

Boston, Mass., Oct. 15.—Three men of the Eighty-ninth regular coast artillery were killed and eight injured by an explosion of a mortar battery at Fort Bank today. Three of the injured men may die.

cars, etc., besides the guns already reported.

An Awful Slaughter.

Mukden, Oct. 15.—One of the bloodiest episodes of the desperate fighting between the Shalke River and Yental during the last three days occurred at the village of Endotula, west of the railroad and on the neighboring heights east of the railroad. The Japanese had been driven out of these positions with terrible losses, but October 13th they concentrated such a murdering fire on the village that it became necessary for the Russians to retire. The same evening the Russian commander gave imperative orders to re-occupy Endotula. The Zaraisk regiment, without firing a shot, marched under cover of darkness and bayoneted several battalions of Japanese, many of whom died as they slept. A few of the Japanese escaped and sought refuge in stacks of corn, but the Russians, carried away by the frenzy of the revenge, rushed upon the survivors and literally tore up their bodies with bayonets. The Russians then rolled themselves in the Japanese blankets. Next morning the Japanese again shelled out the regiment. Again Kuropatkin ordered them to retake the position but the efforts of his troops were in vain. The Russians could not reach the Japanese trenches, so withering was the Japanese fire and only a few returned where companies had charged. The companies were in some cases commanded by sergeants after other officers had fallen. One officer, his face streaming with blood, limped up to General Kuropatkin, who was furious. "Where is your company?" asked the general. "This is all that is left of it," replied the officer. "It was like a slaughter house." The artillery fight Wednesday was the fiercest of the war. The Japanese handled their guns superbly and chose splendid positions. Their guns seemed to have every range measured. They would concentrate the fire of their two hundred guns, first on one place and then on another. Some of the Russian regiments were literally shot to pieces.

SUCCOR FOR SAN MARCIAL

Governor Otero Orders Tents and Blankets Sent to the Flood Stricken People.

NO TIME TO BE LOST

Together With Senator W. H. Andrews He Makes the First Personal Donation to Relief Fund.

The appeal of the citizens of San Marcial for aid for the flood stricken people of that town and vicinity was telegraphed Governor Otero at Embudo yesterday afternoon. Although tired, weary and hungry and given only two hours in which to prepare for the trip to Las Cruces via the Santa Fe Central, the Governor set immediately to work to make such arrangements as were in his power to alleviate the distress of the destitute people who had appealed to him. He issued the following order to Adjutant General W. H. Whiteman:

"W. H. Whiteman, Adjutant General.

"I am advised of floods at San Marcial. Furnish the flood sufferers with tents and blankets immediately for temporary relief, committee receiving for same. Your immediate attention requested. MIGUEL O. OTERO, Governor of the Territory of New Mexico."

Personally, he telegraphed \$200 to the relief committee at San Marcial. Senator W. H. Andrews, the Republican candidate for Congress, also wired a donation of \$200 towards the relief of the most immediate necessities of the sufferers from the flood. Unfortunately, the Territory has no funds at its disposal toward relieving distress such as was occasioned by the floods of the past two weeks, but nevertheless, Governor Otero is doing all in his power to bring quick and effective succor to the people of San Marcial who have been deprived of their homes, and who lost a great deal of property by the waters of the Rio Grande.

Before the arrival of Governor Otero yesterday afternoon, Territorial Secretary J. W. Reynolds had sent the following telegram to Frank Johnson of the relief committee at San Marcial:

"Your dispatch repeated to Governor Otero at Espanola, en route to Santa Fe from Taos. You may expect prompt action immediately upon his arrival here. Rest assured, Territorial administration will do all in its power to render assistance and give speedy relief."

UNION COUNTY DEMOCRATS

They Take a Fall Out of the Republicans in General and Nominate a Ticket.

The Democrats of Union County held their convention on October 5th, at Clayton. The temporary officers were: Cesarro Garcia, chairman; A. C. Miera and R. W. Lackey, vice chairmen; Daniel Romero and Seferino Otero secretaries. The permanent organization consisted of Francisco Miera, chairman; Dolores Romero, L. F. Garcia, vice chairmen; Daniel Romero, T. C. de Baca secretaries; A. C. Miera and Seferino Miera, interpreters.

Long resolutions were adopted denouncing the Territorial administration, the present jury law, the board of county commissioners for settling a \$6,800 defalcation of the treasurer for \$3,500 and lauding the Democrats from Parker down to Money to the skies.

The following ticket was nominated: Council, Seferino Martinez; house, Juan D. Casados; county commissioners, First district, M. Herzstein; Third district, Epitacio Montoya; probate judge, Jose Benito Maestas; probate clerk, Trinidad C. de Baca; sheriff, Pablo y Sanchez; assessor, Francisco Garcia; superintendent of public schools, J. C. Velarde; collector and treasurer, Daniel Romero; surveyor Francisco Archuleta.

STEAMER WRECKED, CREW LOST.

Highlands Light, Mass., Oct. 15.—In a furious gale, the schooner Elwood Burton, in charge of Captain Williams, struck on Peaked Hill during the night and three of the crew perished. The mate and two other members of the crew were rescued from the floating wreckage.

U. S. WEATHER BUREAU NOTES.

Forecast for New Mexico: Local rain tonight and probably Sunday; cooler weather Sunday.

Yesterday the thermometer registered as follows: Maximum temperature, 64 degrees, at 3:00 p. m.; minimum, 37 degrees, at 4:00 a. m. The mean temperature for the 24 hours was 50 degrees. Relative humidity, 46 per cent. Temperature at 8:00 a. m. today, 49 degrees.

All legal blanks at the New Mexican.

SANTA FE NEW MEXICAN

THE NEW MEXICAN PRINTING COMPANY, PUBLISHERS.

MAX FROST Editor
PAUL A. F. WALTER Manager and Associate Editor.
PERCY F. KNIGHT Secretary and Treasurer.

Entered as Second Class matter at the Santa Fe Postoffice.

RATES OF SUBSCRIPTION.	
Daily, per week, by carrier.....	25
Daily, per month, by carrier.....	\$1 00
Daily, per month, by mail.....	75
Daily, one year by mail.....	7 50
Daily, six months, by mail.....	4 00
Daily, three months, by mail.....	2 00
Weekly, per year.....	2 00
Weekly, six months.....	1 00
Weekly, per quarter.....	75
Weekly, per month.....	25

The New Mexican is the oldest newspaper in New Mexico. It is sent to every postoffice in the Territory, and has a large and growing circulation among the intelligent and progressive people of the Southwest.



NATIONAL REPUBLICAN TICKET.

For President,
THEODORE ROOSEVELT.

For Vice President,
CHARLES WARREN FAIRBANKS.

For Delegate to the 59th Congress,
WILLIAM H. ANDREWS.

JUDGE PARKER'S VIEWS ON THE ISSUES OF THE DAY STILL UNDEFINED.

The people have read the speech and letter of acceptance of the Democratic nomination for the Presidency, Judge Alton Brooks Parker. So far so well. But the people today are not much wiser and know hardly any more than they did three months ago, of Judge Parker's political opinions and of his stand upon the questions of the day and the issues before the country. They do know that he has condemned the issuance of Pension Order No. 78 by President Roosevelt in which the age limit for pensions for veterans of the Civil War is set down as sixty-two years. They also know that he has sent a dispatch to the St. Louis Democratic convention to the effect that he believed "That the gold standard was irrevocably established." Beyond this there is little to base the opinion as to Judge Parker's views of governmental administrative affairs and the policies which he would pursue were he at the head of the government of the greatest country on earth.

The Chicago Chronicle says correctly that with the Presidential election less than a month away the political sentiments of the Democratic candidate for the Presidency are still unknown. His nearest and most intimate political associate professes ignorance on this subject.

If we should take an inventory of all that is known of Judge Parker's position on national questions it would be as follows: He voted twice for Bryan and freer silver, and expressed afterward his pride and satisfaction that he had done so; he declared in his speech of acceptance that the gold standard was "irrevocably established;" some time later he said in a private letter which was made public that he was in favor of the abandonment of the Philippines; and in his letter of acceptance he promised that if elected he would revoke President Roosevelt's pension order.

This is scanty and attenuated material in which to clothe a Presidential candidate, but it is nevertheless the whole of Judge Parker's political attire. He stands before the people like a political mendicant, with only a rag here and there of political clothing, and yet, with outstretched palm soliciting the confidence and support of a distrustful public.

This beggary is all the more significant in view of the fact that it has been commented on, disapproved and ridiculed on all sides. Not only has the Republican press mercilessly satirized it, but even the Democratic press and the Democratic leaders have expressed their dissatisfaction with it. Such men as Joseph Pulitzer, for instance, have written to Judge Parker explaining to him the dire necessity that he should take a bold stand on something or other, and adjuring him to break his silence, but all in vain. There are two possible explanations of Judge Parker's reticence. The prevalent one is that he is constitutionally timid, and that he shrinks from any public statement of his views for fear he may injure his prospects of election. The other explanation is that he has no views to express, and this is probably the true one.

Several months ago a story was published seriously and without contradiction of a conversation between Judge Parker and a friend in regard to the Judge's ability to perform the duties of President of the United States. Judge Parker is said to have remarked on that occasion: "I am confident I could perform those duties. I was at first diffident in regard to filling the duties of my present position, but a friend told me just to look wise and say nothing, and I would after a while catch on. It would be the same way about the Presidency. There are many public men who are able and willing to instruct a President in the duties of his office." It is evident that Judge Parker expects, in case of his election, to be coached by Messrs. Hill and Gorman.

ROOSEVELT AND THE FIRST VOTERS.

Reports from reliable observers and from well posted politicians throughout the country, except, of course, in the Solid South, where nothing of the kind is expected, agree that President Roosevelt's hold upon the masses of the voters is increasing and that his popularity is greater than ever, especially with the young men who will vote for the first time this year. The Denver Republican sizes up this situation correctly when it says editorially that from all parts of the country come reports of the popularity of President Roosevelt. He appeals so strongly to the American spirit that the Democrats have been unable to break his hold upon the people, and especially upon the admiration of young men.

A correspondent, writing from Indiana, says that every voting precinct in that state shows first-voters of Democratic parentage who are going to vote for President Roosevelt. They find in him their ideal leader, and in the Republican party they find the spirit of progress and achievement which appeals to their enthusiasm.

The American people are a progressive and enterprising people, and they demand of a party that it accomplish something and of a leader that he show himself fearless and capable of leading his party forward. This they find in the Republican party and in President Roosevelt.

The same popularity observed in Indiana is seen in Colorado. President Roosevelt appeals with special strength to the spirit of dash and enterprise in the people of this state. He will receive an enormous vote which will demonstrate that he has a stronger hold on the people of this state than Mr. Bryan had in his best days. Mr. Bryan received in 1896 an enormous majority in Colorado, but comparatively little of it was due to his personal popularity among Colorado voters.

IMPORTANT MATTERS TO BE LOOKED AFTER IN WASHINGTON.

Both for business and political reasons, every citizen of New Mexico who desires the advancement and progress of the Territory and single statehood should vote for the Republican candidate for Congress, Senator W. H. Andrews. The record of Mr. Andrews during his residence of nine years in this Territory proves conclusively that he is certainly the man for New Mexico in the Congress of the United States to obtain for the people what they desire and what they ought to have from the Federal government. These are: "Single statehood within present Territorial limits and under present name; proper recognition of the Territorial rights and claims in the matter of the reclamation of arid lands; authority to select public lands anywhere in the Territory in lieu of those heretofore granted but lost to the Territory by prior appropriation; the defeat of the venomous and infamous International dam scheme which, if it should pass Congress, would deprive the people of the Rio Grande Valley and its tributaries of the full, free and unlimited use of the waters pertaining to this river system and would stop development thereof; the increase of postal facilities and the establishment of rural mail routes in the more populous country sections." There are many minor matters to be looked after in addition to these more important ones. All these would have careful, proper and energetic attention if Mr. Andrews becomes the delegate to Congress from New Mexico.

The Democratic leaders are hugging the delusion that Mr. Rodey in his independent race will carry the county of Bernalillo and thus take away many hundreds of votes from Senator Andrews, the regular Republican candidate for delegate. This will prove a delusion, nothing more and nothing less. There are a good many true and sincere Republicans in that county and they will not stray after false gods, simply because Mr. Rodey wants them to. They will vote the straight Republican ticket, including the delegate, as in right and for their own best interests, they ought to do. They will not forsake party principles and party candidates, because Mr. Rodey and the Democratic Territorial machine desire them to.

An Albany bishop recently kissed J. Pierpont Morgan. That bishop must have wanted a financial donation, as the Texas cow boy wanted his gun.

A new stone bridge is to be built in this city to cross the Santa Fe River on College Street. This is an improvement greatly demanded by the needs of the city. County Commissioner Arthur Seligman is entitled to the principal credit for getting favorable action in this matter by the county authorities. Improvements of that kind count a good deal and would be of still more consequence were the city authorities and the property holders along the banks of the Santa Fe River to take the necessary steps for straightening and deepening the channel of that water course from Canon Road to Guadalupe bridge. The floods of the last few days demonstrate that such action on their part is absolutely necessary.

Information is being received at the headquarters of the Republican Congressional Campaign committee from many Congressional districts that the chances that the Republicans will make gains in the House of Representatives of the Fifty-ninth Congress are very good and on the increase. Chairman Babcock and Secretary Overstreet of that committee are not rainbow chasers and their opinion on the question is pretty safe. Both believe that the next House of Representatives will be Republican.

When they started out on their campaign in this Territory, the Democratic campaign bosses asserted that they would not indulge in mud slinging; erga, their newspapers and their speakers are doing considerable work in that line. No more need be said. In addition, the Democratic Territorial central committee is sending out pamphlets containing scurrilous falsehoods and false and untrue charges. No one wonders at this, however! It was expected.

"How will the wool growers of New Mexico take to that Democratic demand for 'free raw materials'—wool brought in from foreign countries free of duty, in other words?"—Socorro Chieftain.

Those wool growers of New Mexico who know what is best for them will vote against the candidates of the Democratic party whenever and wherever they can. That is the way they will treat the situation.

The Socorro Chieftain has been supplied with a new power press and now shows up in a very neat and attractive form. It is one of the best papers in the Territory and on the right side. It does much for the advancement and progress of the town and county it is published in. It can also be depended upon to advocate what is right and proper in politics.

That St. Petersburg correspondent is at it again. He has telegraphed that the Czar's government is to send another 700,000 soldiers to Manchuria. A few hundred thousand men, more or less, make no difference so that versatile correspondent. He handles them as easily and sends them to Manchuria as quickly as he would a corporal's guard.

"The Independent Republicans" of Mora County have concluded to place the name of the Democratic candidate for delegate, Mr. Money, at the head of their ticket. Still, they have the impudence and effrontery to call themselves "Independent Republicans." The party is better off without them, than it would be with them.

"Senator Andrews has probably done more for the development of New Mexico than any other citizen of the Territory has done in the same length of time. An evidence of the proper appreciation of that fact will be manifested in his election as delegate to Congress."—Socorro Chieftain.

There is no truth in the report that the gallant defenders of Port Arthur are short of ammunition. They certainly have some of their own and daily receive a good deal in the shape of shot and shell from the Japanese artillery. In fact, the chances are that they receive a great deal more ammunition in that way than they want to.

A Santa Fe correspondent of the Denver News a few days ago telegraphed his paper among other pipe dreams that Torrance County would give Mr. Money 150 votes out of the 1,000 or 1,200 that will be polled there, he may consider himself a mighty lucky man.

The Anti-Imperialists in Boston at a recent meeting of about three hundred of them resolved that they were the people of the Commonwealth of Massachusetts and would vote against the election of President Roosevelt. People have heard of "The Three Tailors of Tooley Street."

After all, money is not of as much consequence in political campaigns in this Territory as some of the political bosses assert. The indications are that the "Money campaign" now going on is falling very flat and is anything but enthusiastic.

The voters of New Mexico have about made up their minds that the "Money question" is not the paramount issue this year and will elect Senator W. H. Andrews as their delegate to Congress.

TO CURE A COLD IN ONE DAY.
 Take Laxative Bromo Quinine Tablets. All druggists refund the money if it fails to cure. E. W. Grove's signature is on each box. 25c.

A national bank has just been organized in Hagerman, Chaves County. This makes the fifteenth bank of that kind organized since January first, 1900. Still the Democratic campaign bosses and their newspapers assert that the present Republican Territorial Administration is keeping capital out of the Territory and is just ruining the people.

The Hague Peace Tribunal is busy trying to get a quorum for a meeting, while two of the great nations on earth are engaged in a relentless and bloody war, while several others have smaller fighting expeditions on their hands. In this decade of the Twentieth Century, peace is a nice thing to talk about, but so far, that is all.

The question of the construction of brick sidewalks and crossings on the principal streets and avenues of the city is still being looked upon by the city authorities with a good deal of suspicion. The construction of such might show too much of a modern spirit of advancement.

Senator Andrews is making a strenuous and effective campaign and the results will be good. Governor Otero is with the Senator on his campaign tour and is doing very efficient and telling work for the Republican party. That is the way it should be.

This county has certainly had very bad luck with the three Democratic treasurers and ex-officio collectors it has had during the past twenty years. The property owners, tax payers and voters should bear this in mind on the coming election day.

Were New Mexico a state this year, the ticket would have been, in all likelihood, something like this: For President, Eugene V. Debs; for Representative to the Fifty-ninth Congress, B. S. Rodey.

The Democratic scheme to induce Republican citizens to vote for Mr. Money and the Democratic party via the Rodey route will not succeed. The Republicans of this Territory will not be caught by such chaff.

Colonel Henry Watterson, in the Louisville Courier Journal, intimates that President Roosevelt wants to be "a bad man." This opinion was evidently written between mint juleps and when the Colonel felt sour.

The school authorities of Baltimore have directed that the school children of that city be thoroughly drilled in fire drill. They are profiting in the 'Monumental City by past experience.

Rodey or no Rodey! The signs of the times portend the election of Senator W. H. Andrews by a very handsome and satisfactory majority on November the 8th next.

Deafness Cannot be Cured

by local applications, as they cannot reach the diseased portion of the ear. There is only one way to cure deafness, and that is by constitutional remedies. Deafness is caused by an inflamed condition of the mucous lining of the Eustachian Tube. When this tube is inflamed you have a rumbling sound or imperfect hearing, and when it is entirely closed, Deafness is the result, and unless the inflammation can be taken out and this tube restored to its normal condition, hearing will be destroyed forever; nine cases out of ten are caused by Catarrh, which is nothing but an inflamed condition of the mucous surfaces. We will give One Hundred Dollars for any case of Deafness (caused by catarrh) that cannot be cured by Hall's Catarrh Cure. Send for circulars free.

J. J. CHENEY & CO., Toledo, O.

Sold by Druggists, 7c.

Take Hall's Family Pills for constipation.

Bankers, merchants and business men generally, who are in need of books such as day, journals, cash and ledgers for the year 1905, should not fail to call at the New Mexican bindery or address the same for figures and samples. Loose leaf ledgers of the best kind are also manufactured at the New Mexican bindery. All work is guaranteed to be of first-class material and of the best workmanship and the prices will be found as low as compatible with superior work. The New Mexican bindery is the largest in the Southwest and home people, here and elsewhere in the Territory, should give it preference and support it liberally as it is a home institution and employs quite a force of skilled workmen. Building up home industries helps every business man in many ways.

CHEAP RATES TO NEW YORK.

The Mexican Central has recently placed on sale tickets to New York and return going via the Mexican Central to either Vera Cruz or Tampico; thence via the famous Ward Steamship Line to New York. The return will be by rail over any line to El Paso. The entire trip covering thousands of miles, Havana, Cuba, and its famous Moro Castle, Newport and a dozen of the largest cities of the United States, can be made for \$122.50. A more delightful trip cannot be planned as stop over privileges are allowed and the tickets are good for one year from the date of sale. The trip includes the City of Mexico, the "Paris of America." Further information can be secured by addressing W. S. Mead, C. R. Hudson, general passenger agent, or W. D. Murdock, assistant general passenger agent.

If you have any clean cotton rags that are suitable for cleaning machinery, bring them to the New Mexican office and receive cash for same.

Keep your business ever before the public by advertising in your home paper. A good advertiser always has success in any honest enterprise.

THE OXFORD CLUB

Has on hand a constant supply of the finest brands of
WINES, LIQUORS AND CIGARS
 All the Popular Games.
 SAN FRANCISCO ST., SANTA FE, N. M.

J. E. Lacome, Proprietor.

R. J. PALEN, President.

J. H. VAUGHN, Cashier.

HENRY L. WALDO, Vice President.

THE FIRST NATIONAL BANK

SANTA FE, NEW MEXICO

United States Designated Depository.

Remodeled and Refurnished Throughout.

Cuisine and Table Service Unexcelled.

The Palace Hotel

WILLIAM VAUGHN, PROP.

Large Sample Rooms for Commercial Men.

Santa Fe

New Mexico

Life Insurance

means love of home, of wife, of children and dependents!

It means protection of business credit, and honest, self-respecting old age!

Its use by individuals has become the measure of their judgment, their thrift and their character, and thereby the test of their civilization and their progress.

Are you carrying all the insurance you can? If not, get a policy in THE EQUITABLE, quick!

MRS. L. A. HARVEY, Agent.

102[Chapelle St., Santa Fe, N. M.

A. P. HOGLE

Undertaker and Funeral Director

CALISTO STREET

Best of Reference Given as an EMBALMER. Night Calls

RESIDENCE PHONE 141.

Table Wines!

AT "OUR PLACE"

Will Be Found a Full Line of Table Wines for Family Trade.

Orders by Telephone Will Be Promptly Filled.

W. R. PRICE, Prop.

Santa Fe, N. M.

P. F. HANLEY

DEALER IN

Fine Wines, Liquors & Cigars

Imported and Native Wines for Family Use. OUR SPECIALTIES: Champagne, Cognac, Brandy, Whisky, and Foreign, Old Scotch and American, etc., etc.

SAN FRANCISCO STREET

SANTA FE, N. M.



SCIENTIFIC EMBALMING

At Our Up-to-Date
Undertaking Parlors

The Latest Scientific Methods of Embalming

are Employed. Calls Answered from the Parlors Day or Night or by DOROTEO SENA, Agent.
Pria Road. Our Parlors Consist of a Nicely and Appropriately Fitted Up Suite at No. 18
Lincoln Avenue, West Side Plaza, Santa Fe, New Mexico.

ALL KINDS OF PICTURE FRAMING.

DUDROW & MONTENIE

FINE MONUMENTS TO ORDER.

If you want to buy anything, if you want to sell anything, if you want to rent a house, if you want your house rented, or if you lose anything, advertise in the NEW MEXICAN.

THE CLUB

We handle the Leading Brands of
KENTUCKY BOURBONS
and **PENNSYLVANIA RYES**
Goods bought in bond, purity guaranteed.
**PURE CALIFORNIA WINES, IMPORTED and
DOMESTIC CIGARS and TOBACCOS**
Our Club Rooms are Large, Comfortable and Airy.
AKERS & TOWNSEND, Proprietors.

224 Francisco St. Telephone No. 94

Not Luck But Results.

That is why you see our teams so busy supplying the wants of the people with our fine

CERRILLOS COAL MONERO

WHOLESALE AND RETAIL

WE WAGER That there is some difference in wood. Our wood is the best to be had & always at your call. **FIRE WOOD**

Your order will receive prompt and careful attention.

CAPITAL COAL YARD

OFFICE: Garfield Avenue, Near A. T. & S. F. Depot Phone No. 33

CHARLES W. DUDROW,

LUMBER - SASH - DOORS

All Kinds of Building Material.

CORD AND STOVE WOOD EXTRA DRY AND CUT TO FIT YOUR STOVE

CERRILLOS AND HAGAN COAL

Delivered to any part of the City.

TRANSFER AND STORAGE

We Handle Everything that is Movable.

Phone 33 Santa Fe Branch Office and Yards Cerrillos, N. M.

A. F. SPIEGELBERG

257 San Francisco Street.

Indian and Mexican
Wares and Curios

Shackets, Baskets, Pottery, Rag, Wax, Feather and Linen
Drawn Work, Opals, Turquoise, Garnets
and Other Gems.

SPECIALTY

To have the best of everything in the line.

OJO CALIENTE HOT SPRINGS.

These Celebrated Hot Springs are located in the midst of the Ancient Cliff Dwellers, twenty-five miles west of Taos, and fifty miles north of Santa Fe, and about twelve miles from Baranca Station, on the Denver and Rio Grande Railway, from which point a daily line of stages runs to the Springs. The temperature of these waters is from 90 to 122 degrees. The gases are carbonic. Altitude, 6,000 feet. Climate very dry and delightful the year round. There is now a commodious hotel for the convenience of invalids and tourists. These waters contain 1,639.24 grains of alkaline salts to the gallon, being the richest alkaline Hot Springs in the world. The efficacy of these waters has been thoroughly tested by the miraculous cures attested to in the following diseases: Paralysis, Malaria, Bright's Disease of the Kidneys, Rheumatism, Neuralgia, Consumption, Syphilis and Mercurial Affections, Scrofula, Catarrh, La Grippe, and Female Complaints, etc., etc. Board lodging and bathing \$2.50 per day; \$14 per week; \$50 per month. Stage meets Denver trains and waits for Santa Fe train upon request. This resort is attractive at all seasons, and is open all winter. Passengers for Ojo Caliente can leave Santa Fe at 9 a. m., and reach Ojo Caliente at 4 p. m. the same day. Fare for round trip from Santa Fe to Ojo Caliente, \$7.40. For further particulars, address

ANTONIO JOSEPH, Proprietor

Ojo Caliente, Taos County, N. M.

The book bindery of the New Mexican Printing Company has been so much enlarged and improved, that it is the best north of Pueblo to the Mexico line and between Dallas, Texas, and Los Angeles, California.

AGRICULTURE AND HORTICULTURE IN NEW MEXICO

An Interesting Treatise on Work Conducted By Experimental Station of College of Agriculture and Mechanic Arts at Mesilla Park.

The following interesting article was contributed to the New Mexican by Fabian Garcia, Professor of Horticulture in the New Mexico College of Agriculture and Mechanic Arts:

Our admiration and love for the beautiful as well as for the useful, is to a large extent, the outcome of our civilization; and as these human characters become more developed it is an indication of the progress and prosperity which surrounds us. Nature is very kind to excite and animate these tendencies of ours by means of its exuberant and rich horticultural vegetation, which it places within our reach, giving pleasant and profitable employment to our hands and pleasure and comfort to our sensibilities. Horticulture is an art in which man finds a profitable as well as a pleasant and healthful employment. This is also true of horticulture in New Mexico, and while we do not claim that everything in horticulture in the Territory is a success, at the same time it can not be denied that a marked progress is being made, especially in fruit and vegetable growing.

New Mexico can boast equally as good and sometimes better products than are produced in many other states. When we become better acquainted with the varieties that are adapted to the conditions of this section and more up-to-date cultural methods are practiced, no doubt still better results will be had. There is at present a widespread interest in horticulture, though the interest is nowhere greater than the subject deserves. People who are pursuing other and more trying employments are every day being attracted into some horticultural work. Nature has richly endowed this Territory with almost all the conditions necessary for a good development of many horticultural crops. The climate is mild and the soil is rich, and in this respect New Mexico people have an advantage over the Northern and Eastern people. The climate is so mild, especially along the southern valleys, that many horticultural operations can be carried on all winter.

While not all varieties of each fruit and vegetable succeed in every part of the Territory, there are many which are perfectly adapted to the varied climatic and soil conditions existing, and gradually this list of adaptable varieties is getting larger and better known. People are realizing more and more the importance of adaptability of varieties to the different sections.

There is a great variation in soils throughout the Territory. As a rule this variation ranges from a sandy to a heavy adobe. However great this variation, the soil is plenty rich in plain food. The fact is demonstrated, to a large degree, by the rank and vigorous growth of the plants and heavy crops produced. The practice of adding commercial fertilizers to the land does not seem necessary as yet in New Mexico. The application of barn-yard manure is very beneficial to any of our soils, though fertile they may be. The application of manure should be practiced more extensively, especially by our orchardists and truck gardeners. This feature of the benefits of manure on our soils has been plainly brought out this year at the New Mexico Experiment Station.

Water for irrigation purposes is the important factor for success in horticulture, as well as agricultural, operations in New Mexico. Without a sufficient and a permanent supply of water no fruit, vegetable or flower can develop to its fullest extent. Since New Mexico lies within the arid belt of the United States, the rainfall is insufficient for crops. Occasionally isolated spots are found in the mountains where the rainfall is more abundant and the humidity great enough for some fruits and vegetables to develop. Irrigation, however, is the only safe way of growing crops in the Territory.

Orchard Fruits.

At present the two most important and most developed branches of horticulture in New Mexico are, orchard fruit growing and vegetable growing. The former branch is the most remunerative and the most extensively carried on.

The apple is doubtless the most profitable of the orchard fruits. Grant, Dona Ana, Otero, Lincoln, Chaves, Socorro, Bernalillo, Santa Fe and San Juan are the counties in which the apple is grown extensively. The apples from New Mexico are now known not only in the United States, but abroad. New Mexico apples are always placed in competition with those from other states and countries at the great exhibitions. In 1900 the New Mexico apples, which were exhibited at the Paris Exposition, were included with the best fruit, and some of the specimens sent from Dona Ana County received second premium; while in 1901, at Buffalo, some of the apples from Roswell were awarded a first prize. This year, at the St. Louis Exposition, the

New Mexico horticultural exhibit is attracting a great deal of attention. This gives an idea as to the kind of fruit produced in New Mexico.

The size of the apple orchards varies from small family places to very large commercial plantations. The Mimbres Valley, the Animas Valley, Mesilla Valley and Roswell boast of the largest commercial apple orchards. The Roswell district, in Chaves County, which seems destined to become the largest apple-growing section of the southwest, is now particularly noted for many large commercial orchards. At present the largest bearing orchard is that of Mr. J. J. Hagerman, which comprises over five hundred acres. In the past it has been quite common to plant a large number of varieties, regardless of their adaptability to our climate and soils. However, this practice is being done away with and fewer and better kinds are now planted. The Ben Davis, Gano, Winesap, Huntsman's Favorite, Missouri Pippin, Mammoth Black Twig, Arkansas Black, and the Kentucky Red streak are at present among the most profitable winter varieties. In southern New Mexico the Jonathan and Rhode Island Greening are considered two of the best fall apples. The Maiden's Blush, Tetosky and American Summer Pearmain are good summer varieties. The Early Harvest, Red June, Red Astrachan and Yellow Transparent are among the early varieties. These early apples, as a rule, are very profitable. I have been told by some of the Mesilla Valley apple growers that they usually dispose of their early crop at four to five cents per pound.

The apple seems to be almost free from the many dreaded diseases which are common to it in the East. The woolly aphid and the codling moth are about the worst two insects it has at present. The former of these insects attacks both the stem and roots of the trees. The root form of the woolly aphid is by far the more serious of the two. This insect can be kept under control by the judicious use of tobacco. A common practice is to remove about four inches of soil for a distance of four or five feet from the tree and sprinkle in the depression three to four pounds of powdered tobacco. When the trees are irrigated the leaching of the tobacco kills the insects. While the tree form of this pest is very numerous in the spring and often causes a great deal of alarm among apple growers, it has not been found to be seriously injurious. As a rule, it disappears toward the middle of the summer. The codling moth, while not injurious to the tree itself, is exceedingly destructive to the fruit. It is estimated that from 25 to 75 per cent of the apples are destroyed in all countries where the codling moth is allowed to go undisturbed. For the last twelve years this insect has been gaining foothold in New Mexico, and in some of the apple growing sections it is getting to be a serious pest. The codling moth is an ancient and cosmopolitan pest. The apple growers of ancient times were familiar with its destructive work. Early as two hundred years before the Christian era it is said that Cato spoke of "wormy apples" in one of his treatise on agriculture. Later on, about the first century A. D., Pliny in one of his writings says: "The fruits themselves, independent of the tree, are very much worm-eaten in some years—the apple, pear, medlar and pomegranate, for instance." Wherever apples are grown on a large scale, the codling moth is sure to be found a source of trouble, and when it gets started in a locality it is impossible to entirely get rid of it by any of the known remedies now in use. All sorts of remedies have been tried, but spraying, while not a complete remedy, is the cheapest and most effective way of keeping the codling moth in check. For some time after the codling moth started to be troublesome in some of the apple-growing districts of the Territory, spraying was not practiced, mostly for the reason that it was thought the operation of no value. However, the results of the spraying experiments at the New Mexico Experiment Station, published in Station Bulletin No. 41, show that spraying in New Mexico will reduce the percentage of wormy apples materially. The apple growers of the Territory have been convinced, to a large extent, that spraying is beneficial, and now gasoline and other power sprayers are being introduced in New Mexico. Such has been the interest taken by the fruit growers in saving the fruit from insect injury that the last Legislature passed a law providing for a Board of Horticultural Commissioners in each county. Section 2 of this law reads as follows: "It shall be the duty of the County Board of Horticultural Commissioners in each county, whenever it shall be necessary, to cause an inspection to be made of any orchard.

Continued on Page Six.

PENNROYAL PILLS

CHICHESTER'S ENGLISH
Original and Only Genuine.
SAFE, Always Reliable, Laxative, and
Pain-Expeller. Take no other. Before
Painful Substitutions and Imitations.
Beware of your Druggists, or send for
"Relief for Ladies," in letter, by return
mail, 10,000 Testimonials, sent by
Chichester Chemical Co.,
437 Druggists, Philadelphia, Pa.

Notice for Publication.

(Homestead Entry No. 5070.)

DEPARTMENT OF THE INTERIOR.

Land Office at Santa Fe, N. M., Sept. 9, 1904.—Notice is hereby given that the following named settler has filed notice of his intention to make final proof in support of his claim, and that said proof will be made before the register or receiver at Santa Fe, N. M., on Oct. 21, 1904, viz: Agapito Cortez for the sec. 34, n. 1/4 sec. 34, s. 1/4 sec. 19, township 17 north, range 12 east. He names the following witnesses to prove his continuous residence upon and cultivation of said land, viz: Prudencio Gonzales, Julio Bolal, Crescencio Bolal, of Willis, N. M. Guadalupe Montano, of Pecos, N. M.

MANUEL R. OTERO, Register.

If troubled with a weak digestion try Chamberlain's Stomach and Liver Tablets. They will do you good. For sale by all druggists.

New Mexican want and miscellaneous ads always bring good results.

DON'T OVERLOOK THIS.

A Careful Perusal Will Prove Its Value to Every Santa Fe Reader.

The average man is a doubter, and there is little wonder that this is so. Misrepresentations make people skeptics. Now-a-days the public ask for better evidence than the testimony of strangers. Here is proof which should convince every Santa Fe reader:

Juan A. Ortega, ex-policeman, of Loma street, says: "If all troubled with pain in the back have that annoyance ended as quickly as the use of Doan's Kidney Pills procured at Ireland's Pharmacy ended mine then backache due to kidney complaint would cease to have any terrors for users of this very strengthening and curative preparation. No one in Santa Fe needs be the least dubious about using Doan's Kidney Pills if they require a medicine to wash, purify and strengthen their kidneys."

For sale by all dealers. Price 50 cts. Foster Milburn Co., Buffalo, N. Y., sole agents for the United States. Remember the name, Doan's, and take no substitute.

SCRATCH PAPER.

Made from ledger, linen, flat and book papers at 10 cents per pound at the New Mexican. This is scrap paper put up in pads and is less than the paper originally cost. Only a limited supply.

A LOVE LETTER.

Would not interest you if you're looking for a guaranteed Salve for Sores, Burns or Piles. Otto Dodd, of Ponder, Mo., writes: "I suffered with an ugly sore for a year, but a box of Bucklen's Arnica Salve cured me. It's the best Salve on earth. 25c at Fischer Drug Co., Santa Fe, N. M."

Notice for Publication.

(Homestead Entry No. 7979.)

DEPARTMENT OF THE INTERIOR.

Land Office at Santa Fe, N. M., Sept. 15, 1904.—Notice is hereby given that the following named settler has filed notice of his intention to make final proof in support of his claim, and that said proof will be made before the register or receiver at Santa Fe, N. M., on Oct. 25, 1904, viz: Come D. Carrillo for the Lots 3 and 4, n. 1/4 sec. 35, township 18 north, range 10 east. He names the following witnesses to prove his continuous residence upon and cultivation of said land, viz: Octaviano Rodriguez, Nicolas Baca, Pedro G. Ortiz, Luciano Ortiz all of Santa Fe, N. M.

MANUEL R. OTERO, Register.

Better Than Pills.

The question has been asked—In what way are Chamberlain's Stomach and Liver Tablets superior to the ordinary cathartic and liver pills? Our answer is—They are easier and more pleasant to take and their effect is so gentle and agreeable that one hardly realizes that it is produced by a medicine. Then they not only move the bowels but improve the appetite and aid the digestion. For sale at 25 cents per bottle by all druggists.

THE NAVAJOES' SACRED DANCE.

Which will be one of the new features of the New Mexico Territorial Fair at Albuquerque, October 10 to 15, is a startling exhibition of the length to which religious frenzy carries them. Participated in by one hundred bucks—Indians who have never been off the reservation—the dance illustrates as nothing else can do, the implicit belief of the savages in the efficacy of their peculiar brand of religion. You ought to see this fire dance.

It won't cost much for railroad fare. The SANTA FE has made a rate of \$2.65 from Santa Fe to Albuquerque and return. Tickets on sale October 9 to 14, good to October 17.

Chamberlain's Cough Remedy.

No one who is acquainted with its good qualities can be surprised at the great popularity of Chamberlain's Cough Remedy. It not only cures colds and grip effectually and permanently, but prevents these diseases from resulting in pneumonia. It is also a certain cure for croup. Whooping cough is not dangerous when this remedy is given. It contains no opium or other harmful substance and may be given as confidently to a baby as to an adult. It is also pleasant to take. When all of these facts are taken into consideration it is not surprising that people in foreign lands, as well as at home, esteem this remedy very highly and very few are willing to take any other after having once used it. For sale by all druggists.

CONFESSIONS OF A PRIEST.

Rev. John S. Cox, of Wake, Ark., writes, "For 12 years I suffered from Yellow Jaundice. I consulted a number of physicians and tried all sorts of medicines, but got no relief. Then I began the use of Electric Bitters and feel that I am now cured of the disease that had me in its grasp for twelve years." If you want a reliable medicine for Liver and Kidney trouble, stomach disorder or general debility, get Electric Bitters. It's guaranteed by Fischer Drug Co. Only 50c.

NEW MEXICO TERRITORIAL FAIR

Albuquerque, N. M., Oct. 10th-15th, 1904. For this occasion the Santa Fe will sell tickets to Albuquerque and return from all points between Denver and El Paso Texas. The rate from Santa Fe will be \$2.65 for the round trip, dates of sale October 9th to 14th inclusive, good for return limit until Oct. 17th, 1904.

H. S. Lutz, Agent.

The New Mexican Printing Company will do your job work with neatness and dispatch.

Cause of Lockjaw.

Lockjaw, or tetanus, is caused by a bacillus or germ which exists plentifully in street dirt. It is inactive so long as exposed to the air, but when carried beneath the skin, as in the wounds caused by percussion caps or by rusty nails, and when the air is excluded the germ is roused to activity and produces the most virulent poison known. These germs may be destroyed and all danger of lockjaw avoided by applying Chamberlain's Pain Balm freely as soon as the injury is received. Pain Balm is an antiseptic and causes cuts, bruises and like injuries to heal without maturation and in one third the time required by the usual treatment. It is for sale by all druggists.

Notice for Publication.

(Homestead Entry No. 5370.)

DEPARTMENT OF THE INTERIOR.

Land Office at Santa Fe, N. M., Sept. 24, 1904.—Notice is hereby given that the following named settler has filed notice of his intention to make final proof in support of his claim, and that said proof will be made before the register or receiver at Santa Fe, N. M., on Nov. 3, 1904, viz: Guadalupe Montano for the Lots 1, 2, 3 and 4, section 30, township 18 north, range 12 east. He names the following witnesses to prove his continuous residence upon cultivation of said land, viz: Pedro Ribera, Faustina Ortiz, Bonifacio Sandoval, Manuel Sandoval, all of Pecos, N. M.

MANUEL R. OTERO, Register.

BROKE INTO HIS HOUSE.

S. LeQuinn of Cavendish, Vt., was robbed of his customary health by invasion of Chronic Constipation. When Dr. King's New Life Pills broke into his house, his trouble was arrested and now he's entirely cured. They're guaranteed to cure, 25c at Fischer Drug Co. Santa Fe, N. M.

WANTS

AND MISCELLANEOUS ADS

FOR SALE—A thoroughbred Jersey cow. For particulars as to price, etc., inquire of Joe Cortez.

FOR RENT—Two new six-room cottages, stationary range, bath and toilet. Apply to Geo. E. Ellis, Claire Hotel.

FOR RENT—Elks' Hall, formerly Adam's Hall for balls, parties and all other public and private use. Apply to George E. Ellis, trustee.

FOR RENT—Furnished room, pleasantly situated, about five minutes walk from the post office. Enquire at New Mexican office.

FOR RENT—Two nicely furnished upstairs bed rooms, and three furnished rooms on the first floor, for light housekeeping. Apply to C. A. Haynes, Johnston Street.

A HOME.

The Bon Ton is a home for those accustomed to the best. A choice of table d'hote or a la carte—change back and forth, forth and back—as often as you please.

WANTED—For the U. S. army: able bodied, unmarried men, between ages of 21 and 35; citizens of United States of good character and temperate habits, who can speak, read and write, English. For information apply to recruiting officer, 250 San Francisco Street, Santa Fe, New Mexico.

WANTED—\$8 to \$12 weekly easily earned by either sex knitting seamless hosiery for the western market; our improved family machine with ribbing attachment furnished worthy families who do not own a machine, on easy payment plan; write at once for full particulars and commence making money; no experience required. UNITED STATES WOOLEN CO., Detroit, Mich.

A FAMILY ROW AVOIDED.

There are very few rows in the family where the man always says the only coffee he can drink without getting indigestion is at home. But it is an undisputed fact nevertheless that the coffee served at the Bon Ton is far better than your mother ever made.

LOW RATES TO COLORADO.

Via Santa Fe. Denver and return \$22.55. Colorado Springs \$19.55. Pueblo, \$17.55, on sale daily, good to return until October 21. Call on Santa Fe agents.

H. S. Lutz, Agent, Santa Fe.

A GREAT CUT IN PRICES

We bought the entire line of samples of Carson Pirie Scott & Co., of Chicago. Consisting of Ladies Misses and Children Coats. A full line of Ladies Waists of the latest colors and styles of all grades of materials. Also four hundred pairs of Blankets from the cheapest to the very best. And we have decided to sell all of the above mentioned at a Cut of 33-1-3 per cent off.

NOW is the time, don't miss your opportunity, they will not last long.


This is the only Store in town that will save you Money.

COME FIRST AND SECURE FIRST SELECTION.

American Gentleman

A SWELL SHOE made in all leathers and styles.

THIS IS ONE



PRICE: \$4 & \$4.50

SHOE

MAKERS

WITH THE CHARACTER MAN

Salmon & Abousleman,

Sole Agents.

Salmon and Abousleman,

Wholesale and Retail Dry Goods.

S. SPITZ

DIAMONDS

A FULL LINE OF

WATCHES, CLOCKS, SILVERWARE, ETC.

ALL KINDS OF DESIGNS IN

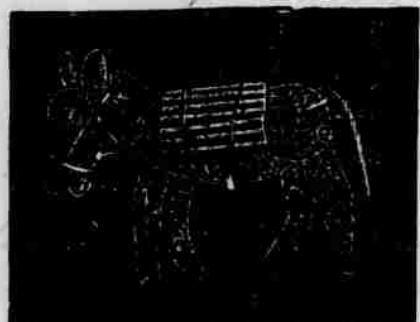
Filigree Fob Chains, Filigree Neck Chains, Filigree Souvenir Spoons, Filigree Brooch Pins, Filigree Bracelets, Filigree Card Cases,

South Side Plaza - Santa Fe

JEWELRY

Manufacturer of

MEXICAN FILIGREE JEWELRY



San Francisco St.

Telephone 26.

H. S. Kaune & Co.
GROCERS

Headquarters For
SANTA FE GROWN FRUIT

Try a Jar of
BISHOP'S GRAPE FRUIT OR ORANGEATE
POULTRY EVERY WEDNESDAY AND FRIDAY
VEGETABLES DAILY

PRIMROSE BUTTER
The purest and best Butter made, from the Cleanest Creamery in the world. Sealed in air-tight, odor-proof packages

BOSS PATENT and CRYSTAL PATENT Flour

BOSS PATENT : : : \$1.60 for 50 lb. Sack
CRYSTAL PATENT : : : \$1.55 for 50 lb. Sack

SOCIAL AND PERSONAL

N. L. King went to Albuquerque last evening to attend the fair.

Charles Laub, of Chilili, returned to his home this morning after a short visit in the Capital City.

Mrs. C. V. Safford, who has been for two weeks on a visit to friends in San Juan County, has returned home.

Louis A. McRae, a well known sheep man living near Estancia, was transacting business in the city today.

Dr. James W. Elder arrived in the city last evening from a trip to Denver and went south via the Santa Fe.

J. D. Clements, of Alamogordo, was an arrival last evening in the Capital City, on his way to Albuquerque to attend the fair.

Mrs. Roberts, of Nogal, arrived last evening over the Santa Fe Central and left on the first train for Albuquerque to be a visitor at the fair.

Bishop T. S. Burns, of the Nashville, Tennessee diocese of the Catholic church, arrived in the city this morning and is a guest at the Sanitarium.

Judge W. H. Pope arrived in Roswell during the week and is expected here tomorrow to attend the sessions of the Territorial Supreme Court on Monday next.

Dr. George C. Bryan, of Alamogordo, who is head surgeon of the El Paso & Northeastern Railway, was in the city last evening en route to Albuquerque, where he will attend the Territorial Fair.

Sheriff Alexander Read, of Rio Arriba County, and at present candidate for the council from that district, arrived in the city last night with Governor Otero and party en route to Las Cruces.

R. I. Meeker, of Denver, an assistant with the Geological Survey, arrived here last evening on the Denver & Rio Grande train, on his way to Albuquerque. He is in New Mexico on official business.

Mr. and Mrs. C. T. Brown and two sons, who have been east for a month at the St. Louis Exposition, returned to their Socorro home yesterday via the southern route. They were delayed several days en route.

Mrs. James Massie, accompanied by her daughter, Miss Massie, have arrived from Toronto, Canada, to visit her son, Dr. J. A. Massie. They will be guests at the Sanitarium until a suitable residence is secured.

Samuel S. Wrightsman, deputy in

ESTABLISHED 1856

INCORPORATED 1903

SELIGMAN BROS. CO.

Announce the arrival of their complete and up-to-date

FALL STOCK

Including

DRESS GOODS, JACKETS, CAPES, LADIES' HATS, TRIMMINGS, SKIRTS, MEN'S FURNISHINGS, CLOTHING, HATS, CARPETS, RUGS, ETC., ETC.

We take orders for suits and guarantee a fit at Eastern Prices

THE LOWEST PRICED HOUSE IN THE CITY FOR FINE GOODS!

TELEPHONE 36

P. O. BOX 219

District Clerk A. M. Bergere's office, was a passenger over the Santa Fe Central this morning for Chicago. Upon his return he will spend a few days at the World's Fair at St. Louis.

Honorable Amado Chaves is in San Rafael, Valencia County, looking after the dipping of a large herd of sheep belonging to the Fernandez Company in that section. He expects to return home during the early part of the week.

The residents of the Sunmount Tent City were last evening entertained by Carl Pallet, of Cleveland, Ohio, at a marsh mallow bake, which was followed by a dance in the dining room. The affair was very unique and was greatly enjoyed by those present.

John H. Sargent, of the firm of Sargent Brothers, of El Rio, and a brother of Territorial Auditor W. G. Sargent, arrived here from the south yesterday and left for his home this morning. Mr. Sargent has just made a large purchase of sheep from H. O. Bursum.

It is announced from Albuquerque that Miss Grace Houghton, of that city, will soon be married to Bernard Gunsul, of Roswell. Miss Houghton has many friends in Santa Fe and is a young woman of unusual musical ability. Mr. Gunsul is a rising electrician and is at present located at Roswell.

Frank S. Davis was homeward bound this morning over the Santa Fe Central to El Paso. He had been east the past few months and on his way home stopped in Santa Fe to greet old friends and acquaintances. Mrs. Davis and children will remain at Paris, Missouri. Mrs. Davis' old home, for a few weeks longer.

President Granville A. Richardson of the Irrigation Commission of New Mexico who attended its session yesterday left this afternoon for Denver, Colorado, where Monday next the taking of testimony in the water suit of the State of Kansas versus the State of Colorado, in which Mr. Richardson is referee will commence. Mr. Richardson expects to be absent from New Mexico on this duty for the major part of the winter.

Richardson and son, who have spent the summer with relatives in Michigan will go to the Richardson home in Roswell shortly.

Monday night last Judge John R. McFie was treated to an old-fashioned charivari at the residence of Mrs. West, on Grant Avenue, the occasion being the anniversary of his birthday and also of his wedding day. When all was ready he was invited into the parlor. He had no sooner entered than a company of ladies and gentlemen rushed in upon him beating tin pans and other discordant instruments as if the bees were swarming. After the concert had ended the company extended congratulations and wished the Judge many happy returns. The parlor and dining room were profusely decorated with flowers and the hostess, Mrs. West, had an abundance of delicious refreshments, which were served at the conclusion of the social features of the evening.

The leap year party at Adams' Hall Thursday night was a very delightful affair and the gentlemen present are indebted to the ladies for a very pleasant evening. The function was arranged by the Misses Mayme Morrison and Bertha Staab in honor of Miss Mary Dye, of Georgia, who is a guest of her brother, Dr. W. R. Dye. About 30 guests spent the evening in dancing, the music being furnished by Messrs. Lorenzo, Morrison and Young. At 11 o'clock tempting refreshments were served, after which dancing was resumed, the hour of midnight being the signal for the dispersing of the happy crowd. Among those in attendance were Mrs. L. B. Prince as chaperone; Misses Mary Dye, Ethel Easley, Irene DuVal, Uda Gibson, Gertrude Duhrson, Clara Zimmer, Bertha Staab, Emily Walter, Mayme Morrison, Wood, Stapp and McQuarry; Dr. C. A. Wheelon and Messrs. Clarence Pierce, Carl Bishop,

R. H. Hanna, Edward Crist, Frank Ellis, Alfred Smedley, Sidney Corn, John Zook, Samuel Wrightsman, Edward Andrews, Harvey DuVal, Hayden, Spencer and Brodhead.

Frank Springer of Las Vegas, member of the Irrigation Commission of New Mexico, who spent yesterday here attending the sessions of the commission, left this afternoon for his home in the Meadow City.

MARKET REPORT.

MONEY AND METAL

New York, October 15.—Money on call, nominal; 10 loans. Prime mercantile paper 1/2 @ 5 per cent. Silver 57 1/2. New York, October 15.—Lead and copper firm and unchanged.

GRAIN

Chicago, October 15.—Close. Wheat, Oct. 11 3/4; Dec. 11 3/4. Corn, Oct. 5 1/4; Dec. 4 3/4. Oats, Oct. 28 3/4; Dec. 28 3/4.

PORK, LARD AND RIBS.

Pork, Oct. \$11.00; Dec. \$11.15. Lard, Oct. \$7.35; Jan. \$7.25. Ribs, Oct. \$7.55; Jan. \$6.50 @ 6.52 1/2.

WOOL MARKET.

St. Louis, Mo., October 15.—Wool, is steady and unchanged. Territory and western, medium, 21 @ 22 fine medium, 17 @ 18; fine, 10 @ 16.

STOCK MARKETS.

New York, October 15.—Atchafson 85 1/2; pfd., 101 1/2; New York Central, 135 1/2; Pennsylvania, 135 1/2; Southern Pacific, 62 1/2; Union Pacific, 107 1/2; pfd., 94 1/2; U. S. Steel, 21 1/2; pfd., 81 1/2.

LIVE STOCK.

Kansas City, Mo., October 15.—Cattle market steady. Native steers, \$4.00 @ \$6.20; Southern steers, \$2.50 @ \$3.75; Southern cows, \$1.50 @ \$2.75; native cows and heifers, \$1.50 @ \$4.50; Stockers and feeders, \$2.25 @ \$4.25; bulls, \$1.75 @ \$3.50; calves, \$2.50 @ \$5.50; western steers, \$3.00 @ \$4.50; western cows, \$1.50 @ \$3.50.

Sheep market steady. Muttons, \$3.25 @ \$3.50; lambs, \$4.00 @ \$5.00; Range wethers, \$3.30 @ \$4.00; Ewes, \$2.75 @ \$3.00.

Chicago, October 15.—Cattle market steady. Good to prime steers, \$5.75 @ \$6.75; poor to medium, \$3.75 @ \$5.50; stockers and feeders, \$2.25 @ \$4.00; cows \$1.50 @ \$4.10; heifers, \$2.50 @ \$4.75; canners, \$1.50 @ \$2.40; bulls, \$2.00 @ \$4.35; calves, \$3.50 @ \$7.00; Texas fed steers, \$3.50 @ \$5.00; western steers, \$3.00 @ \$5.25. Sheep market steady. Good to choice wethers, \$3.75 @ \$4.25; fair to choice mixed, \$3.25 @ \$3.65; western sheep, \$2.75 @ \$4.10; native lambs, \$4.50 @ \$6.00; western lambs, \$4.00 @ \$5.65.

It is an admitted fact that real estate, financial men and merchants all say that quickest and best results are obtained by advertising in the "New Mexican."

CHAVES COUNTY REPUBLICANS

They Succeed in Holding a Convention After Two Postponements Caused By Railroad Tie-Up.

The Republicans of Chaves County met at Roswell on Tuesday afternoon after two postponements on account of the floods. The temporary officers were: E. A. Cahoon, chairman, and J. M. Reid, secretary. Chairman Cahoon appointed the following committees: Permanent organization, Nathan Jaffa, Herbert Fitzgerald; order of business, O. R. Tanner and Morris Price; resolutions, Herbert J. Hagerman and Ava E. Page. Herbert J. Hagerman was elected permanent chairman and made an excellent address. C. E. Mason was elected permanent secretary. Upon motion of E. A. Cahoon and Nathan Jaffa, all nominations were passed except those for sheriff, for which K. G. Woodruff was nominated; probate judge, Karl M. Snyder being named for that office, and commissioner from the Third district, Herbert J. Hagerman being nominated. Strong resolutions were adopted endorsing the Territorial administration and pledging the Republican vote of Chaves County to Senator W. H. Andrews.

Church Announcements.

Cathedral.—Twenty-first Sunday after Pentecost, Oct. 16, 1904. First mass at 6:30 o'clock a. m. Second mass at 9:30 a. m., sermon in English. Third mass at 10:30, sermon in Spanish. At 6:30 o'clock p. m. October devotions.

Guadalupe Church.—Tomorrow Sunday August 1. One mass only at 9:30 a. m. Jules Deraches.

Church of the Holy Faith (Episcopal) Palace Ave., Rev. W. R. Dye in charge: Holy Communion at 7:30 o'clock a. m. Sunday School at 9:15 a. m. Morning prayer with sermon at 11:00 o'clock. Evening prayer at 8:00 o'clock. Public cordially invited.

Presbyterian Church.—9:45 Sabbath school; preaching 11 a. m.; subject: "Placing the Emphasis in the Right Place." Evening: Y. P. S. C. E. at 6:45. Preaching, 7:45; subject: "All Things, Possible with God." Come and bring your friends.

Major S. K. Hooper, General Passenger and Ticket Agent of the Denver & Rio Grande, has authorized very low rates to Santa Fe from all stations on rates to Santa Fe from all stations on the D. & R. G. between Durango and Santa Fe for the New Mexico Territorial Fair at Albuquerque, N. M., Oct. 10th to 15th. For information regarding these rates apply to agents or B. W. Robbins, Traveling Freight and Passenger Agent, Santa Fe, N. M.

Al. legal blanks at the New Mexican.

For First Class SANITARY PLUMBING

Go to the **W. A. McKenzie** Hardware STORE

All Work will be sure, to please you.

If it is in the drug market and you want it you can procure it at
IRELAND'S PHARMACY



THE INTERIOR OF NEW MEXICO BUILDING AT THE EXPOSITION AT ST. LOUIS.

MINOR CITY TOPICS

John Koury has something to say to the people of Santa Fe in his change of ad today.

Sheriff H. C. Kinsell went to Moriarty this forenoon for a visit to his ranch in that vicinity.

A special session of the board of county commissioners will be held Monday next for the transaction of important business.

W. H. Goebel, the hardware man is making attractive prices on the famous Round Oak Stoves in his ad in this issue of the New Mexican.

The Territorial Supreme Court will meet in adjourned session at the capitol Monday next, provided a quorum of the judges shall be present.

At the Boston Mine Exchange last week, 550 shares of the stock of the Santa Fe Gold and Copper were sold at from \$1.50 to \$1.67 a share.

Chicago and return via Denver & Rio Grande, \$45.55, through Denver, Colorado Springs or Pueblo. Good until December 15th, with stopover at St.

Louis. For particulars, call on D. & R. G. agent or B. W. Robbins.

David S. Lowitzki has just received a carload of new furniture and a glance at his ad in this issue will give any additional information desired.

John W. Sullivan, superintendent of the Rocky Mountain Coal Company, was in Madrid the first of the week en route to Kennedy on business.

Albuquerque and return, \$2.65, tickets on sale October 15th, 16th, 17th, 18th, 19th and 20th, good to return until October 22nd. The fair will be continued until October 20th.

Santa Fe trains Nos. 1, 7 and 8 due last evening arrived this forenoon, slow running being still necessary on the New Mexico division on account of soft track in Shoemaker Canon.

Hon. T. B. Catron is resting easily is doing very well. It will be remembered that he was thrown from a vehicle near Clenega last Monday and received some serious cuts and bruises.

From Albuquerque it is reported that tomorrow will be a great day at the fair. A large number of Santa Fe people are expected to go to the Duke City this evening and be in attendance tomorrow.

The Territorial Fair will continue until Friday of the coming week.

The Denver & Rio Grande has announced cheap rates to St. Louis and return via Denver, Colorado Springs or Pueblo, with stopovers at Kansas City. For particulars see D. & R. G. agent.

The registration of voters in the four city precincts up to noon today was as follows: Precinct No. 3, 378; precinct No. 4, 375; precinct No. 17, 250 and in precinct No. 18, 300 making a total of 1,312.

The hope of the postoffice force that all the delayed mails had arrived on Thursday did not materialize for 153 sacks of newspaper mail and 18 lock pouches of letter mail were received during the course of the day.

For the first time since the evening of September 28, the Denver & Rio Grande train arrived on time last evening, thus demonstrating that all flood damage has been repaired to such an extent that trains can again run on schedule time.

At four o'clock this afternoon Treasurer Arthur Seigman, of the Board of Managers for New Mexico of the Louisiana Purchase Exposition received a dispatch from St. Louis announcing that the gold medal, highest reward for the best mineral exhibit was awarded to this territory.

At four o'clock this afternoon Agent H. S. Lutz received telegraphic advice that trains Nos. 1 and 7 from the east on the Santa Fe are ten and seven hours late respectively. No trains for the south may be dispatched until tomorrow morning. The train from the south was five hours late.

Plans were on foot this afternoon for the running of a big excursion to Albuquerque tomorrow morning. Tomorrow will be the banner day of the Twenty-Fifth Annual Territorial Fair. In the afternoon the Santa Fe Central baseball team of this city plays the Albuquerque team and a good game is expected.

There will be no preaching at the Methodist Episcopal Church, tomorrow morning, owing to the absence from the city of the pastor, Rev. J. L. Shively, who left yesterday for Raton to attend a session of the New Mexico Mission Conference. Sunday school will, however, be held at the usual hour.

Solicitor General Edward L. Bartlett who has been very ill for the past three weeks is at St. Vincent's hospital where everything possible is being done for him. He is under the charge of Dr. W. S. Harroun and has all possible care and attention. He is, however, a very sick man and his friends indeed are very anxious about him.

In the baseball tournament at the Territorial Fair at Albuquerque yesterday, the Las Vegas Blues defeated the Gallup team by the score of 12 to 0, the same score as the game of Thursday when the Albuquerque team defeated Gallup. The game today was between Santa Fe and Gallup and Andrews was on the slab for the local team.

The city board of education held a special session this morning at the residence of Hon. T. B. Catron. Every member was present except Pedro Roybal. The matter discussed was the sale of the remainder of the bond issued for the construction of the new high school building. It is understood that the matter is progressing favorably.

Agent Lutz of Santa Fe reports that he sold yesterday 50 tickets to Albuquerque for the Territorial Fair, making a total of 183 sold up to and including last evening. The fair will be in progress tomorrow, Sunday, and the fair grounds will be open to visitors. Round trip tickets to Albuquerque will therefore be on sale at the Santa Fe office tomorrow. The time of the fair

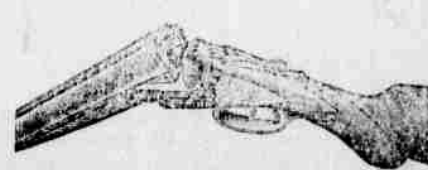


Refrigerators.
Ice Cream Freezers
at Your Own
Prices,
To Close Out.

Attractive Offerings in Furniture! New Goods. New Prices.
Cash or Installments.



Do you want to buy
TOILET SETS?
We have 20 patterns to
select from. Prices
ranging from \$3.75 to
\$9.50. Look at them.



Guns and Ammunition—Best Made.

has been extended to include next Thursday and reduced fair tickets will therefore be sold by Mr. Lutz every day of the coming week and until after the fair is closed.

Major C. B. Vodge, recruiting officer, U. S. Army, stationed here has three applicants at Albuquerque ready for enlistment as soon as proper references concerning their character can be obtained. During the past week, two applicants from this city were examined, one had to be rejected as he was a trifle under the weight required by the regulations. The other desired to enlist in the infantry branch of the service, and could not be taken as there was no vacancy in that branch. The regulations are very strict and only first class men of good character and strong physique are now enlisted in the regular service of the United States.

There was to have been a reunion of the Scottish Rite Free Masons of the Territory in this city on Friday and Saturday next for the conferring of the degrees of that rite by Santa Fe Lodge of Perfection No. 1, which is situated here. A number of candidates of various sections and towns of the Territory were to be present to take the degrees but on account of the recent serious interruptions of train service and because it became apparent that a number of Scottish Rite Free Masons from different parts of the Territory could not reach here for the occasion, the reunion has been called off for the present and notice of when it will be held will be given in due course of time. All Scottish Rite Free Masons will please take notice and govern themselves accordingly.

JUSTICE OF THE PEACE DOCKETS.

The New Mexican Printing Company has prepared civil and criminal dockets especially for the use of justices of the peace. They are especially ruled, with printed headings, in either Spanish or English, made of good record paper, strongly and durably bound with leather back and covers and canvas sides; have a full index in front and the fees of justices of the peace and constables printed in full on the first page. The pages are 10 1/2x16 inches. These books are made up in civil and criminal dockets, separate, of 320 pages each or with both civil and criminal bound in one book, 80 pages civil and 320 pages criminal. To introduce them they are offered at the following low prices:

Civil or criminal.....\$4.00
Combination civil and criminal 5.00..
For 45 cents additional for a single docket or 55 cents additional for a combination docket, they will be sent by mail or prepaid express. Cash in full must accompany order. State plainly whether English or Spanish printed heading is wanted. Address
NEW MEXICAN PRINTING CO.,
Santa Fe, New Mexico.

If you wish to make quick sales you will have to advertise your wares.

Excursionists! Remember that the best meals in the city are served at the Bon Ton.

LETTER LIST.

List of letters remaining uncalled for in the postoffice at Santa Fe, N. M., for the week ending October 15, 1904. If not called for within two weeks will be sent to the dead letter office at Washington:

Alexander, J. M.	McMillan, Hon
Burkeley, Mrs. Claude	Pinio Juanita
Barr, Ione	Pacheco, Lusita
Beavers, R. M.	Quintana, Francisco
Craze, N. R.	Romero, Gabriel
Coriz, Erenoa	Rivera, Camilo
Martinez	Ruiz, Jose
Freelove, Harry	Tapia, Miguel
McKinney, Mrs. N.	Wilson, J. E.
McMillan, Mrs. Daniel	
Wise, Mrs. Florence L.	

In calling please say advertised and give the date.

PAUL A. F. WALTER,
Postmaster.

J. P. VICTORY

Attorney at Law and

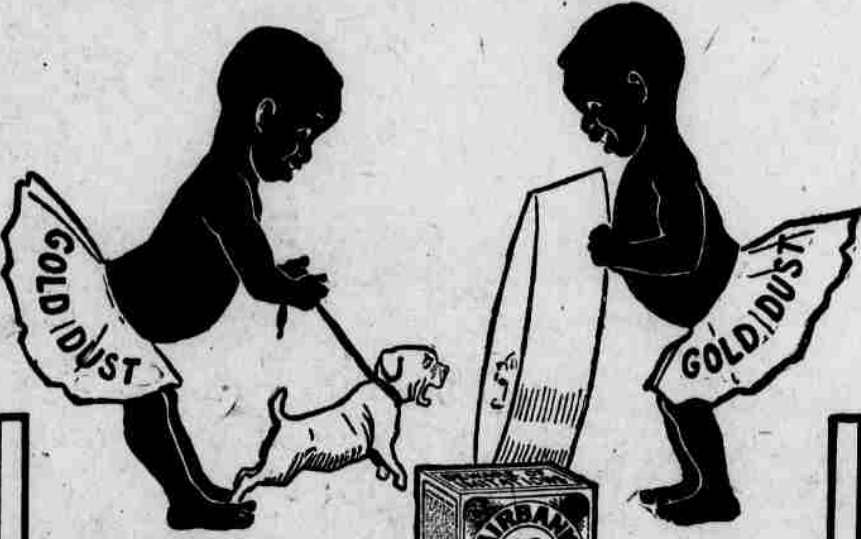
Real Estate Agent

112 San Francisco Street, Santa Fe, N. M.

REAL ESTATE LOANS.
Money to loan upon real estate security on easy terms.

If you wish to make quick sales you will have to advertise your wares.

"Let the GOLD DUST TWINS do your work"



The Dog and The Shadow

You remember the fable of the dog who dropped a real bone for its shadow which he saw in the water. Bear in mind that all is not

GOLD DUST

that glitters under the name of "Washing Powder." Don't accept a shadowy substitute, but get the real Gold Dust, with The Gold Dust Twins on package.

OTHER GENERAL USES FOR GOLD DUST: Scrubbing floors, washing clothes and dishes, cleaning wood-work, oil cloth, silverware and tinware, polishing brass work, cleaning bath room, pipes, etc., and making the finest soft soap.

Made by THE N. K. FAIRBANK COMPANY, Chicago—Makers of FAIRY SOAP.

GOLD DUST makes hard water soft

THE OLD CURIO STORE

J. S. CANDELARIO
301 San Francisco St.

Wholesale and Retail Dealer In

Indian and Mexican Curios

Our stock is the largest in the city and we are adding goods every day.
We Guarantee satisfaction or refund your money.
After you have visited other stores and obtained prices, call on us and get our prices

We are here to stay. We are not closing out stock, but increasing it every day. This is the oldest established native curio store in Santa Fe. We like the business and you will always find us at the OLD STAND ready to please you.

P. O. BOX 340

The best place to buy Indian and Mexican Blankets, Pottery and Curios, also Relics from the Cliff Dwellings. Beautiful Mexican Drawn Work, Box 340

Santa Fe Central Rail'y

TIME TABLE

Effective Sunday, September 11, 1904.

South Bound		North Bound	
No	Stations	No	Stations
8.15 a	10 Live Santa Fe Arr	7.00 a	10 Live Santa Fe Arr
8.35 a	16 Donaciana	6.50 a	10 Live Santa Fe Arr
9.00 a	18 Vega Blanca	6.40 a	10 Live Santa Fe Arr
9.25 a	22 Kennedy	6.30 a	10 Live Santa Fe Arr
9.45 a	24 Clark	6.25 a	10 Live Santa Fe Arr
10.25 a	41 Stanley	6.20 a	10 Live Santa Fe Arr
11.00 a	52 Moriarty	6.15 a	10 Live Santa Fe Arr
11.30 a	61 McIntosh	6.10 a	10 Live Santa Fe Arr
12.50 p	69 Estancia	6.05 a	10 Live Santa Fe Arr
1.25 p	81 Willard	6.00 a	10 Live Santa Fe Arr
1.55 p	82 Progresso	5.55 a	10 Live Santa Fe Arr
2.35 p	86 Blanca	5.50 a	10 Live Santa Fe Arr
3.20 p	118 Arr Torrance Live	5.45 a	10 Live Santa Fe Arr

Connecting at Santa Fe, N. M., with the Denver & Rio Grande R. R. for all points in Colorado, Utah, Idaho, Montana, Washington and the Great Northwest.

Connecting at Torrance, N. M., with the El Paso-Northeastern System for Kansas City, Chicago, St. Louis and all points east and for El Paso, Texas and all points in Southern New Mexico, Arizona and the Republic of Mexico.

Connecting at Kennedy, N. M., for points east and west on the Atchafalaya, Topeka & Santa Fe Railway.

For rates and information address
S. B. GRIMSHAW,
General Passenger Agent,
Santa Fe, N. M.

WANTED—Clean cotton rags, New Mexican office. Cash paid for same.

Fresh Flowers all the Time! Fresh Fruits in Season!

FRUITS AND FLOWERS

The Clarendon Garden

San Miguel Street, Near the Old Church, Santa Fe, N. M.

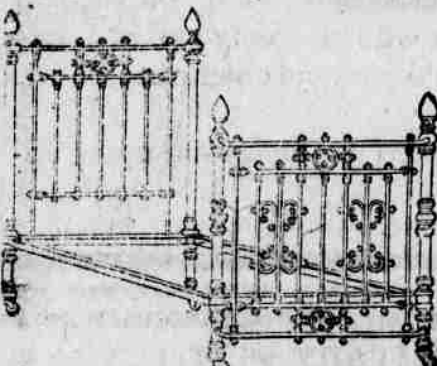
CUT FLOWERS A SPECIALTY

WEDDING BOUQUETS DECORATIONS

FLORAL DESIGNS

Telephone No. 12 P. O. Box 457

DAVID S. LOWITZKI



Call and see his new
line of Iron Beds at
very low price.

Also has very large stock
of New and Second Hand
Stoves, Stove Pipe, Zinc,
etc., etc.

We have just received a carload of
New Furniture

And will be pleased to show you through our establishment.

Goods sold on easy payments

Everything usually carried in a first-class and up to date drug
establishment may be found at
IRELAND'S PHARMACY

BECOMING A MOTHER

Is an ordeal which all women approach with indescribable fear, for nothing compares with the pain and horror of child-birth. The thought of the suffering and danger in store for her, robs the expectant mother of all pleasant anticipations of the coming event, and casts over her a shadow of gloom which cannot be shaken off. Thousands of women have found that the use of Mother's Friend during pregnancy robs confinement of all pain and danger, and insures safety to life of mother and child. This scientific liniment is a god-send to all women at the time of their most critical trial. Not only does Mother's Friend carry women safely through the perils of child-birth, but its use gently prepares the system for the coming event, prevents "morning sickness," and other discomforts of this period. Sold by all druggists at \$1.00 per bottle. Book containing valuable information free.

MOTHER'S FRIEND

The Bradford Regulator Co., Atlanta, Ga.

H. B. CARTWRIGHT & BRO., WHOLESALE GROCERS

Grain, Flour and Potatoes • Stationery, Patent Medicines and Grocers' Sundries.

PROMPT ATTENTION GIVEN MAIL ORDERS.

SANTA FE, N. M.

MISS ROSE OWENS,

No. 720 Seventeenth St., WASHINGTON, D. C.

"If every suffering woman has the same experience with Wine of Cardui that I had, your medicine will be most popular. About a year ago I began to have a worn out tired feeling with lassitude, pains in the back and head which kept increasing every month. I felt that I needed something, but to get the right medicine was the trouble. I finally decided on your Wine of Cardui and only needed to take three bottles when I was fully recovered."



Miss Rose Owens.

If you are a suffering woman we would say to you that Wine of Cardui seldom fails to completely cure any case of female ills. We say emphatically, it never fails to benefit. Every day hundreds of sufferers are writing to our Ladies' Advisory Department. The letters are opened by persons competent to give advice. Mrs. Jones was cured by following the advice which was freely given her by the Ladies' Advisory Department. Miss Owens was cured without advice by just buying a \$1.00 bottle of Wine of Cardui from her druggist and taking this great medicine in the privacy of her home. No doctor's examination, treatment or advice is necessary. You have read what these two cured women have written. Is this not enough to lead you to determine to be rid of suffering?

August 13, 1900, Mrs. W. H. Jones, of Cameron, Mo., writes: "I suffered terribly at monthly periods for three years. I would sometimes go for seven months with no flow at all. Now I have my health back again and am expecting to be confined in January. I cannot praise your medicine enough."

WINE of CARDUI

A million suffering women have found relief in Wine of Cardui.



BEEN TO THE FAIR?

Of course you are going. If you want the best service see that your ticket reads via the El Paso-Northeastern and Rock Island Systems.

Low rates to St. Louis, also to all points in Indiana and the more important points in Ohio. These tickets will permit of stop-over at St. Louis.

St. Louis tickets on sale October 3-4-5-6-19-20-26 and 27, limit 90 days, other tickets October 11th, limit 30 days. Insist on your ticket agent routing you via this line-the short line-through without change to St. Louis in Standard and Tourist sleeping and chair cars. Meals in dining cars all the way.

Detailed information cheerfully furnished upon application to:

A. N. BROWN, General Passenger Agent.

NEW MEXICO MILITARY INSTITUTE

ROSWELL, NEW MEXICO.

THE MILITARY SCHOOL OF NEW MEXICO

Established and Supported by the Territory.

SIX MEN INSTRUCTORS, all graduates of Standard Eastern Colleges. New buildings, all furnishings and equipments modern and complete; steam-heated, gas-lighted, baths, water-works, all conveniences. TUITION, BOARD and LAUNDRY, \$200 per session. Session is three terms of thirteen weeks each.

ROSWELL is a noted health resort, 3,700 feet above sea-level; well-watered.

REGENTS—Nathan Jaffe, W. M. Reed, R. S. Hamilton, J. C. Lea and E. A. Cahoon

For particulars address

COL. J. W. WILLSON, Supt.

REMINGTON TYPEWRITERS

NEW MEXICAN PRINTING CO., Santa Fe, New Mexico

AGRICULTURE AND HORTICULTURE IN NEW MEXICO

Continued From Page Three.

or nursery, or trees, or any fruit packing house, store room, sales room, or any other place in their jurisdiction, and if found infested with scale insects, codling moth, or other insect pests injurious to fruit, trees and vines, they shall notify the owner or owners, or person, or persons in charge of or in possession of said trees or place, aforesaid, that the same are infested with said insects or any of them, or their eggs or larvae, and they shall require such person or persons to disinfest or destroy the same within a certain time, to be specified. This is, undoubtedly, a good law and good results should be expected, if it is properly executed.

The pear and quince thrive equally as well as the apple, but as a rule they are only grown on small areas. The pear is particularly adapted to New Mexican conditions. The tree and fruit are as free from diseases and insect pests as the apple. The dreaded pear blight, leaf blight, fruit spot, rust and scab which are so troublesome in the East, are practically unknown to our pear growers. The size and quality of the fruit compare favorably with similar fruit from the Pacific Coast. The Lawson, Doyenne d'Ete, Andre de Portes, Petite Marguerite, Tyson and Clapp's Favorite are among some of the early pears tried at the New Mexico Experiment Station; the Flemish Beauty, Bartlett, Clairgeau, Duchess de Angouleme and Louise Bonne de Jersey are some of the fall varieties. The Colonel Wilder, Easter Beurre, P. Barry and Josephine de Malines have given good results as winter pears.

Of the stone fruits, the peach, which is grown with more or less success throughout the Territory, is the most profitable and perhaps the second fruit in importance in New Mexico. Southern New Mexico has most of the large commercial plantations, and the largest of these are located in the Mesilla Valley and in Carlsbad. The southern valleys in New Mexico are particularly adapted for peach growing. The peach tree begins to bear about the third year after planting. The trees in a young peach orchard at the New Mexican Experiment Station, planted in the spring of 1902, set a heavy crop of peaches in the spring of 1904. The tree grows quite fast and if annual pruning is not practiced the tops grow so high that the fruit, which is produced on the previous year's growth, is soon out of reach. The annual method of pruning should be more commonly practiced by the peach growers.

In New Mexico the peach acts somewhat differently from what it does in other states in regard to the blooming period. It has been found by a variety test conducted at the New Mexico Experiment Station that the peach can be divided into two distinct divisions, as far as the blooming period is concerned—the early and late bloomers. As a rule, the early ripening varieties are the late bloomers and the late ripening the early bloomers. The most successful and sure bearers are the early ripening kind, and this is due to the fact that, generally, they bloom late enough to escape the late spring frosts which are very common in New Mexico, and which oftentimes are very destructive to the late ripening peaches. The early ripening kinds ordinarily bloom from eight to fifteen days later than the late peaches. The Alexander, Sneed, Arkansas Traveler, Waterloo, Governor Garland and Hym's Surprise, are among the leading early varieties, while the Crawford, June Rose, Crothers, Sallie Worrell, Picquet's Late, Bequet's Free, Chinese Cling, St. John's and Stump of the World make a good list of late kinds. The Elberta, while a very good peach, is more tender in the bud than the other varieties. In size and quality New Mexico produces peaches which are equal to, if not superior, to those produced in other states. Even the California peaches are frequently spoken of as being inferior to those from this Territory. In this connection, the Albuquerque Morning Journal of July 31, 1904, has the following to say: "New Mexico peaches have been winning prizes at California fruit shows. The California peaches are very large and very rosy, but nature forgot to supply them with flavor."

Apricots in New Mexico are only of minor importance. The trees grow large and vigorously, but as a rule they are poor bearers, on account of their susceptibility to frost injury. Ordinarily they bloom too early to escape the late spring frosts. It is very doubtful if the apricot will ever be grown on a commercial scale in the Territory. A few of the best varieties for home use are, the Moorpark, St. Ambrose, Royal and Luizet.

Cherries are only grown for family use, and as a rule they are not extra well adapted to New Mexican conditions. In the northern part of the Territory, in San Juan and Santa Fe Counties, the cherries seem to do better. The sour cherries, like the Early Richmond, Ostheim and other varieties predominate. The Bigarreaux, Duchess and Governor Wood, which belong to the sweet varieties, are less adapted.

There is no extensive plum growing in New Mexico, but a bright future seems to await this fruit, as there are many varieties which do admirably well in all the fruit growing sections of the Territory. The plums are be-

coming more in demand, and every year more trees are being planted. The trees of all three of the European, Japanese and native types grow well and bloom profusely. The Japanese plums, however, are much like the apricot in their blooming period; they usually bloom too early in the spring. It has been thoroughly demonstrated by experiments conducted at the New Mexico Experiment Station, and by practical plum growers throughout the Territory, that while the Japanese plum trees are hardy and the fruit of many varieties is large and very fine, this group of plums is practically worthless, owing to their liability to frost injury.

The native plums are better bearers and the trees are just as hardy and as heavy bloomers. The fruit, however, is not as large nor as good a shipper as that of the Japanese group. The Golden Beauty, Wayland, Pool's Pride and Wild Goose and other varieties have given splendid results at the New Mexico Experiment Station. On the other hand, the European group of plums is, in every respect, admirably adapted for growing in New Mexico; trees are thrifty, heavy and late bearers, and as a result of this, they are very sure bearers. By proper selection of varieties of this group a succession of excellent plums can be had throughout the plum season. The prunes, which belong to the European group, also do well in New Mexico. The French, German and Silver Prunes, and the Clyman, Imperial and Transparent Gages, Jefferson, Washington, Pond's Seedling, Yellow Egg and Coe's Golden Drop are a few among the good varieties.

Small Fruits.

The small fruits, like the gooseberries, blackberries and dewberries, currants and strawberries, seem to do well in some portions of the Territory. The best places for the culture of most of the small fruits are in the more elevated, cooler and more humid sections, especially in the mountain districts. These fruits do not, as a rule, develop as well in the more southern and warmer valleys. It is believed that by proper selection of varieties and a judicious practice of cultural methods, that some of these fruits can be made to grow quite successfully in the larger and warmer valleys. The Excelsior, James Vick, Warfield, Parker's Earl, Crescent and Bidderwood seem to be the most widely grown strawberries at present.

Grapes.

New Mexico produces fine grapes, and the lower and warmer valleys seem to be better adapted to grape culture. The Mesilla Valley, in the lower portion of the Rio Grande Valley, for example, is recognized as the finest grape producing section in New Mexico. The grape does so well in this valley that many of the grape growers look ahead to when this section of the Rio Grande Valley will be devoted almost entirely to the cultivation of the European grapes. The European grapes, or the so-called "California Grapes," succeed much better than the native varieties, and these are the commercial kinds for New Mexico. At present the commercial varieties are the Muscat of Alexandria, Mission, and, on a smaller scale, the Flame Tokay and Gros Coleman. The New Mexico grapes usually find ready sale in the markets of Texas, Louisiana and Colorado. The Mission grape, which is medium late in ripening, is a medium-sized black berry, but very sweet and pleasing in flavor, and it is the most popular variety and one that has given New Mexico a reputation as a grape-growing section. The grape shipping season is practically from the twentieth of August to the last of September. The reason for this short season is due to the lack of earlier and later ripening varieties than the Mission and Muscat of Alexandria. The New Mexico Experiment Station is fast demonstrating that early, as well as late ripening varieties can be successfully grown. The Cannon Ball Muscat, Chasselas Fountainebleau, Thompson's Seedless and Precoce du Puy de Dome are a few of the early varieties, which ripen about two weeks earlier than the Mission.

Vegetables.

Vegetables of many kinds do equally well in New Mexico as the fruits. Where plenty of water for irrigation is at hand and some skill in growing vegetables is exercised, large crops can be produced. Tomatoes, cantaloupes, onions, celery, and chili are a few of the most important vegetables. The tomato is very widely grown and it is a crop that is getting to be quite a source of revenue to the Territory. Every gardener and almost every farmer grows some tomatoes, but the largest tomato fields may be found along the Pecos Valley and Rio Grande Valley, and the Mesilla Valley is particularly noted for tomatoes. The tomatoes from this valley are canned in Las Cruces by Mr. Theodore Rouault. These tomatoes are sold in New Mexico, Texas, Colorado, Arizona, and other states. It is not uncommon to hear people, who have eaten the California and Eastern canned tomatoes, remark that the tomatoes from the Mesilla Valley are superior, especially in flavor. These tomatoes have gained such a reputation that the demand has been greater than the supply. Tomatoes for early market can be easily forced in the field. This is done by means of small "field cold" frames. The New Mexico Agricultural Experiment Station is demonstrating this fact clearly this season. Some sixty plants were planted out on March 5th in these small, glass-covered boxes. The plants started to bloom about May 15th, and

Continued on Page Seven.

SAVES TWO FROM DEATH.

"Our little daughter had an almost fatal attack of whooping cough and bronchitis," writes Mrs. W. K. Haviland, of Armonk, N. Y., "but, when all other remedies failed, we saved her life with Dr. King's New Discovery. Our niece, who had consumption in an advanced stage, also used this wonderful medicine and today she is perfectly well." Desperate throat and lung diseases yield to Dr. King's New Discovery as to no other medicine on earth. Infallible for coughs and colds. 50c and \$1 bottles guaranteed by Fischer Drug Co. Trial bottles free.

PROFESSIONAL CARDS.

Attorneys at Law.

MAX. FROST, Attorney at Law. Santa Fe : : : New Mexico

EDWARD L. BARTLETT, Lawyer, Santa Fe, New Mexico. Office in the Capitol.

RICHARD H. HANNA, Attorney at Law, Phone 66. Offices Griffin Block

EUGENE A. FISKE, Attorney and Counselor at Law. Santa Fe, N. M. Supreme and District Court Practice

BENJAMIN M. READ, Attorney-at-Law, Santa Fe, N. M. Office Sena Block. Palace Ave

WILLIAM H. H. LLEWELLYN, Attorney-at-Law. Las Cruces, New Mexico, District attorney for Dona Ana, Otero Grant, Luna and Sierra Counties Third Judicial District.

CHAS. F. EASLEY, (Late Surveyor General.) Attorney-at-Law, Santa Fe, N. M. Land and mining business a specialty

E. C. ABBOTT, Attorney-at-Law. Practices in the District and Supreme Courts. Prompt and careful attention given to all business. District Attorney for the Counties of Santa Fe, Rio Arriba, Taos and San Juan. Santa Fe, N. M.

EDWARD C. WADE, Attorney-at-Law. Practices in all the courts. "Mining cases and mineral patents a specialty." LAS CRUCES, NEW MEXICO

FRANK W. C'ANCY, Attorney-at-Law. (District Attorney 2d Judicial District.) Practices in the District Courts and the Supreme Court of the Territory, also before the United States Supreme Court in Washington. ALBUQUERQUE - - NEW MEXICO

A. B. RENNEHAN, Attorney-at-Law. Practices in the Supreme and District Court. Mining and Land Law a specialty. Rooms 8 and 9, Sena Building. Palace Avenue, Santa Fe, N. M.

OSTEOPATHY

DR. CHARLES A. WHEELON, Osteopath. No. 103 Palace Avenue. Successfully treats acute and chronic diseases without drugs or medicines. No Charge for Consultation. Hours: 9-12 m., 2-5 p. m. Phone 166

DENTISTS

DR. C. N. LORD, Office, Kahn Block, over Spitz' Jewelry Store. South Side of Plaza.

C. O. HARRISON, D. D. S., Office: Over Fischer's Drug Store. On the Plaza (Successor to Dr. Manley.)

Civil Engineers & Surveyors

JAY TURLEY, Civil Engineer and Surveyor, Irrigation Work a Specialty. U. S. Deputy Mineral Surveyor. Santa Fe, N. M.

G. A. COLLINS, Civil and Irrigation Engineer, Surveying and Mapping. Estimates Furnished. 112 San Francisco St., Santa Fe, N. M.

Stenography & Typewriting

NOTARY PUBLIC, STENOGRAPHER AND TYPEWRITER. TRANSLATIONS From Spanish into English and from English into Spanish carefully made. Office West Side of Plaza. FRANCISCO DELGADO, Santa Fe, N. M.

ARCHITECTS

HOLT & HOLT. Architects and Civil Engineers. Maps and surveys made, buildings and construction work of all kinds planned and superintended. Office, Montoya Building, Plaza, Las Vegas. Phone 94.

BEAUTIFUL WOMEN.

Pump cheeks, flushed with the soft glow of health, and a pure complexion, make all women beautiful, and so do those luscious oysters at the Bon Ton.

1904 October, 1904

Sun	Mon	Tues	Wed	Thur	Fri	Sat
						1
2	3	4	5	6	7	8
9	10	11	12	13	14	15
16	17	18	19	20	21	22
23	24	25	26	27	28	29
30	31					

INFORMATION BUREAU OF THE WORLD'S FAIR.

A St. Louis World's fair information bureau has been established at 835 Seventeenth street, Denver, in charge of Phil P. Hitchcock, where information will be cheerfully furnished.

It will pay you to advertise. Try it

SOCIETIES.

Masonic.



MONTEZUMA LODGE No. 1, A. F. and A. M.—Regular communication first Monday in each month at Masonic Hall at 7:30 p. m. S. SPITZ, W. M.

F. P. CRICHTON, Secretary.



SANTA FE CHAPTER, No. 1, R. A. M.—Regular convocation second Monday in each month at Masonic Hall at 7:30 p. m. W. E. GRIFFIN, H. P.

ARTHUR SELIGMAN, Secretary.

SANTA FE COMMANDERY No. 1, K. T.—Regular convocation fourth Monday in each month at Masonic Hall at 7:30 p. m. W. R. PRICE, E. C. W. E. GRIFFIN, Recorder.

K. O. P.

SANTA FE LODGE NO. 2, KNIGHTS of PYTHIAS—Regular meeting every Tuesday evening at 8 o'clock Castle Hall, corner of Don Gaspar Avenue and Water Street. Visiting Knights given a cordial welcome. JOHN L. ZIMMERMAN, C. C. JOHN K. STAUFFER, K. R. S. R. H. BOWLER, Master of Finance

I. O. O. F.

SANTA FE LODGE NO. 2, I. O. O. F. Meets every Friday evening in Odd Fellows Hall, San Francisco street. Visiting brothers welcome. GEO. W. KNAEBEL, N. G. A. P. HOGLE, Secretary.

B. P. O. ELKS.

SANTA FE LODGE No. 460, B. P. O. E. Holds its regular session on the second and fourth Wednesdays of each month. Visiting brothers are invited and welcome. A. L. MORRISON, JR., E. R. A. J. FISCHER, Secretary.

IMPROVED ORDER RED MEN.

Santa Fe Tribe No. 5, I. O. R. M. Meets every Thursday eve at Odd Fellows hall at 8 o'clock. Visiting chiefs cordially invited. C. L. BISHOP, Sachem. A. P. HOGLE, Chief of Records.

SANTA FE LODGE NO. 259, FRATERNAL UNION OF AMERICA—Regular meetings first and third Mondays in each month at 8 o'clock p. m., Knights Pythias Hall, Don Gaspar Avenue. Visiting brothers welcome. J. S. CANDELARIO, P. J. MARTIN, Secretary, H. S. LUTZ, Treasurer.

All legal blanks at the New Mexican.

Santa Fe Filigree and Jewelry Manufacturing Co.

Gold and Silver Filigree

N. Mondragon, Mgr.

Laughlin Building, Don Gaspar Avenue.

MUTUAL BUILDING & LOAN ASSOCIATION

Will assist you to Own Your Own Home! Be your own landlord. Pay your rent into the Building & Loan Association and thus pay for your home. The Association has on hand money to loan on desirable property. For particulars call on or address the secretary. R. J. CRICHTON, SECRETARY. GRIFFIN BLOCK. SANTA FE, N. M.

JACOB WELTMER
BOOKS, STATIONERY, MAGAZINES, PERIODICALS.
Headquarters for
SCHOOL SUPPLIES
Fine Confectionery and Cigars
208 San Francisco St. Santa Fe, N. M.

THE CLAIRE HOTEL
GEORGE E. ELLIS, Proprietor.
The most conveniently located and only fire-proof and steam-heated Hotel in the city. Electric lights, baths and sanitary plumbing throughout. Everything up to date. First-class Cafe and Buffet connected. Fine Sample Room for Commercial Men.
AMERICAN OR EUROPEAN PLAN.
Postal Telegraph and Cable Co's Office in the Building
CORNER PLAZA AND SAN FRANCISCO STREET.

DO YOU EAT?
If You Do Try the New Cuisine at the
Coronado Cafe
Short Orders a Specialty. All the Delicacies of the Season. Open Day and Night.
Regular Meals 25 Cents. 21 Meals for \$4.50.
* G. LUPE HERRERA, Proprietor *
254 San Francisco Street, Next to Cartwright Davis Co's Store.

THE CHAS. WAGNER FURNITURE CO
WE LEAD IN EVERYTHING.
China, Glassware, Picture Frames and Mouldings Stoves and Ranges
Furnaces Made to Order Goods Sold on Easy Payments
CHARLES WAGNER
"Licensed Embalmer,"
San Francisco Street.
Telephone 10. Night Calls Answered from residence—Telephone No. 1.

THE : ZEIGER : CAFE
QUICKEL & BOTHE, Proprietors.
Club Room and Billiard Hall Attached.
Corner Railroad Avenue and Second Street
ALBUQUERQUE NEW MEXICO

HENRY KRICK SOLE AGENT FOR
Lemp's St. Louis Beer.
ALL KINDS OF MINERAL WATERS MAIL ORDERS PROMPTLY FILLED
The Trade Supplied From One Bottle to a Carload.
Guadalupe Street, Santa Fe, N. M. Phone No. 33.

Santa Fe Central Railway System.
Use the Short Line in connection with the E. P. & N. E. and Great Rock Island route. Rates for the World's Fair, at St. Louis, \$43.55, for the round trip. Tickets on sale September 19, 20, 28 and 29, October 3d, 4th, 5th, 6th, 19th, 20th, 28th and 29th. Limited for return for ninety days from date of sale. In no event will the final return limit of these tickets in any case exceed December 31st, 1904. Santa Fe Central trains make close connection at Torrance. All E. P. & N. E. & R. I. trains carry Pullman sleepers, tourist and dining cars. Service unsurpassed. All trains of this route run into the grounds so passengers on this line have no change of cars but are taken directly to the gates of the Exposition.
Tickets also on sale to KANSAS CITY, CHICAGO, and all points east. Lowest rates, quickest time, shortest lines, and best service via this route.
For any additional information call on or address S. B. Grimshaw General Passenger Agent, Santa Fe, New Mexico.
W. H. ANDREWS, Pres. & Gen'l Manager.
S. B. GRIMSHAW, G. F. & P. A.

AGRICULTURE AND HORTICULTURE IN NEW MEXICO
Continued from Page Six.

the first ripe tomatoes were picked on June 28th, about five weeks before the field-grown tomatoes started to ripen. Chili is also extensively raised, and almost every Mexican gardener and farmer grows it. While this plant is, strictly speaking, a Mexican vegetable, it is being adopted by the American population to a large extent. Much of it is now canned at Las Cruces by Mr. Theodore Rouault, and there seems to be a growing demand for the canned product. As a hardy plant I do not know of any other one that is better adapted to all the New Mexican conditions. It will stand drought as well, and usually better, than any of the other vegetables, and so far, there has not been any disease or insect pest observed on the plants.

Cantaloupes and watermelons usually do well, and apparently there is no material difference between the New Mexican-grown Rocky Ford cantaloupe and those raised at Rocky Ford, Colorado. The business of growing cantaloupes is now of some importance in southern New Mexico, especially at Roswell and Carlsbad. The cantaloupes from southern New Mexico can be placed on the market somewhat earlier than a Colorado product. Mr. F. C. Barker, of Las Cruces, is quite successful in growing cantaloupes for the early markets.

Onions can be grown very successfully throughout the Territory. While there are but comparatively few raised, and the demand is mostly supplied by onions grown either in California or other states, onion growing could be made quite profitable in the Territory. For a long while New Mexico has been known for large and excellent quality onions. The old El Paso onion—the variety which has given the Territory a name for fine onions—has practically gone out of cultivation. There are other varieties, however, just as good that can be grown. It is not uncommon to see bulbs from one to two pounds. This size, however, is too large for commercial purposes; merchants prefer specimens about four ounces in weight. Under ordinary treatment large yields can be produced. At the New Mexico Agricultural Experiment Station the Prize Taker and Red Victoria have produced at the rate of 29,000 and 32,000 pounds per acre respectively.

The more elevated and cooler sections, as well as in Albuquerque and Roswell, are among the best celery-growing districts at present. The celery from these latter places is claimed to be equal to the same product from California and Louisiana. This celery finds ready market in the Territory and adjacent states. It has also been shown at Mesilla Park that fine winter celery can be raised when it is transplanted as late as the first of August. In the Mesilla Valley celery can be left out in the field all winter without being materially injured by frost.

Floriculture.
That branch of horticulture which usually appeals to and tends to develop our aesthetic nature is not always thought of very much importance by the fruit and vegetable grower, and consequently it is oftentimes neglected. While floriculture is in its infancy in New Mexico, people are becoming interested in many phases of it and a noticeable progress is being made in both home and commercial floriculture. A great many of the flowering and ornamental plants are very well adapted and do well in many parts of the Territory. By proper selection of plants adapted to the conditions under which they are to be grown, and the exercise of care and skill in growing them, every home could have a flower garden, large or small. In southern New Mexico, along the Mesilla Valley, for example, by adopting a sort of a rotation system the members of the household have a flower garden blooming continuously during the growing season. By planting such plants as the bulbs (hyacinths, daffodils and tulips) dianthus and sweet peas for early blooming; roses for early and late; dahlias, petunias, phlox and asters for summer; cosmos, dahlias and chrysanthemums, for fall, flowers can be picked from the latter part of April to the last of October. Commercial floriculture is beginning to attract attention. This last summer the writer was most agreeably surprised to see the fine roses and carnations growing in the large floral establishment of Mr. Byron H. Ives, of Albuquerque. Mesilla Park and Las Cruces are two shipping places for flowers in the spring and fall. Field grown sweet peas, roses and chrysanthemums are shipped to northern New Mexico, and to El Paso, Texas. Sweet peas, dahlias, dianthus, cannas, phlox, petunias, cosmos, violets, chrysanthemums, hollyhocks, peonies and iris have given excellent results at the New Mexico Experiment Station. The hybrid tea rose, on the whole, seems to be the most satisfactory for outdoor culture in southern New Mexico. This type of roses is harder than the tea rose type, and more satisfactory bloomers than the hybrid perpetuals. The American Beauty, Catherine Mermet, Duchess of Albany, Kaiserin Augusta Victoria, Madam Testout, Augustine Guinoiseau, Bridesmaid and Belle Siebrecht constitute a good list of hybrid tea roses. Aside from the flowering plants, there are a number of good ornamental shrubs, such as euonymus, arbutus, box tree, Himalaya cedar, privets, tamarix and red cedar. Properly arranged specimens or groups of these plants add considerably to the general surroundings of the home grounds, especially in the winter, when the eye longs to see something green.

Forestry.
A subject that needs to be brought more prominently before the people of New Mexico is that of forestry. While some interest is being taken in forestry, it is not greater than the importance of the subject deserves. The benefits derived from forests are not usually well understood by most people. Forests are a great source of revenue to the individual, state and nation in not only supplying lumber and wood, but in furnishing employment to many individuals. Aside from having this great economic value, forests are formers and fixers of soils, preventers of floods, and conservators of moisture. They also serve as windbreaks and beautifiers of the earth. However, with all these valuable points, forests are neglected and often cut over indiscriminately. President Roosevelt has said that "The preservation of our forests is an imperative business necessity. We have come to see clearly that whatever destroys the forests, except to make way for agriculture, threatens our well being." This applies admirably to New Mexico forests, because if once destroyed it would be an exceedingly hard task to start them again, except in the most favorable places. Owing to the lack of sufficient rainfall, the planting of forests, except on a small scale along the irrigated valleys, would be almost impracticable. With this fact in view, forests should be protected as much as possible from all destructive forces. Careless lumbering operations not only destroy the matured trees but the seedlings which have been fortunate enough to start in among the larger trees. Conservative lumbering methods should be inaugurated if our forests are not to be exhausted.

box tree, Himalaya cedar, privets, tamarix and red cedar. Properly arranged specimens or groups of these plants add considerably to the general surroundings of the home grounds, especially in the winter, when the eye longs to see something green.

Hotel Arrivals.
Palace: S. Greenwood, Chicago; R. M. Simons, Louisville; W. A. Savage, Chicago; Alexander Read, Tierra Amarilla; J. M. Elder, Albuquerque; R. I. Meeker, Denver; George C. Bryan, Alamogordo; Mrs. Roberts, Nogal; J. D. Clements, Alamogordo.
Claire: John Gregory, Seattle, Washington; C. D. Johnson, Jacob Posner, E. P. Thompson, E. Morton, Albuquerque; John H. Sargent, El Rito; Louis A. McRae, Estancia; H. C. Thompson, Kennedy; C. F. Laub, Chilli; N. Goldsmith, St. Joseph, Missouri; C. C. Jones, Denver; C. A. Maxwell, Wichita, Kansas.
Bon Ton: George S. Dean, O. Adrianson, Durango; Herman Trujillo, T. M. Bartlett, El Rito.
Normandie: M. M. Allordeg, Cambridge, Massachusetts; W. W. Larkin, Chicago; A. A. Withers and son, New York.

LOW RATES VIA DENVER & RIO GRANDE.
Denver and return, \$22.55. Colonado Springs, \$19.55. Pueblo, \$17.55. Good to return until October 31st.
B. W. ROBBINS,
Traveling Passenger Agent, Santa Fe.

For Your
LIFE, ACCIDENT or HEALTH Insurance
Your
SURETY or COURT BONDS,
As well as Your
FIRE INSURANCE
Go to...
THE HANNA INSURANCE AGENCY
Phone No. 66.
Cor. Washington and Palace Avenues

TO THE CLIFF DWELLINGS
Five hours for the round trip.
Experienced drivers. Low rates and good teams.
GEORGE J. SAFFORD & SON,
Española, N. M.

OPERA HOUSE
A. M. DETTELBAUGH, Mgr.
COMING
For one week
Commening **Oct. 10**
THE MARIE FOUNTAIN THEATER COMPANY
THE OLDEST, LARGEST, BEST
20 PEOPLE 20
Band and Orchestra
Refined Specialties
All New Plays
Special Scenery
OPENING PLAY
FOR BABY'S SAKE
MATINEE SATURDAY
ADMISSION - 35 and 50 CTS
Reserved Seats at Irelands Oct. 4, 1904

The last batch of Scratch Pads advertised for sale by the New Mexican Printing Company went like hot cakes. We did not expect such a run. We have turned over from our up-to-date bindery a larger quantity than ever and can supply you for a limited time a 10 cents per pound. The best paper is used in making them. They are just the thing for offices, stores, and especially for use in the schools. Come quick as they will not last long.

Keep your business ever before the public by advertising in your home paper. A good advertiser always has success in any honest enterprise.

Old papers for sale at the New Mexican office.

STORY & CLARK Pianos!
Read What Accomplished Musicians Say of the Story and Clark Piano.
"Equal if not superior to any instrument I have had occasion to use."—Barron Berthold.
"Shows such superiority of workmanship and finish as must make them welcome to any household."—Leonora Jackson.
"Grand, resonant in tone and delightfully sweet and tender."—Mathilde Bauermeister.
"I cannot speak too highly of your pianos, they seem to be unsurpassable."—R. Watkin Mills.
"I find your pianos wonderfully sympathetic for accompanying the voice."—Lillian Blauvelt Pendleton.
"Gave the liveliest satisfaction to me. I consider them second to none."—David Frangcon Davies.
"I think it capable of the fullest expression of musical thought."—Ellen Beach Yaw.
"In my opinion they rank among the very best pianos of the day."—Emile Sauret.
"Possessed of a beautiful quality of tone and a most sympathetic touch."—Fernando de Lucia.
"I was perfectly charmed with its beauty of tone and delightful touch."—Francis Blitsen.
"Their tone is sweet as well as resonant. Are remarkably adapted for accompanying the voice."—Clementine de Vere Sapio.
"Your pianos embody sweetness and richness of tone, splendid carrying power and excellent action."—Rose Oltzka.
THE STORY & CLARK PIANO CO.
Employ only expert workmen and no piece work or contract work is done in their factories.
They have won renown on two continents for excellence and beauty of their instruments.
Prices and terms most liberal.
Call on the General Agent for New Mexico,
FRANK DIBERT
Santa Fe, N. M.
Who will show you the Story and Clark Pianos in the several styles and finish—Mahogany, Hungarian, Walnut and Golden Oak.
BEST TO BE HONEST.
The boy at Louisville, employed as a bank clerk, who returned to a bank \$45,000 in bills out of a package of \$50,000 that had been given him by mistake for \$5,000, has evidently mastered the great truth that a clear conscience is worth more than any amount of money. An honest meal can be had for 25 cents at the Bon Ton. The best meal in Santa Fe for the money. Fresh oysters, fish and game. Mexican dishes served in any way you wish.
The New Mexican Printing Company is headquarters for engraved cards de visite in New Mexico. Get your work done here and you will be pleased in every particular.

St. Louis AND BACK
OVER
\$43.55
Limit Dec. 31st
On Sale
Oct., 19, 20, 26, 27.
\$40.70
On Sale Daily
LIMIT
15 Days.
Chicago and return \$45.55, one way via St. LOUIS, on sale daily, return limit December 15th.
Full Particulars Santa Fe Ticket Offices
H. S. LUTZ Agent

Going via the Santa Fe you are landed **DIRECTLY IN FRONT OF THE MAIN ENTRANCE** To the "World's Fair."
COACH TICKETS \$25.75
LIMIT 10 DAYS.
Dates of Sale Oct. 11, 15, 18, 22, 25 and 29.

CARTWRIGHT-DAVIS CO.

GEO. W. HICKOX, President & S. G. CARTWRIGHT, Sec'y and Treas.

No. 250 San Francisco Street,

Grocery Telephone No. 4. Meat Market Telephone No. 49.

GREELEY POTATOES.

The potatoes from Greeley, Colorado rank as being of the very highest quality. We are now receiving them, and they are very fine indeed.

Per cwt\$1.25

MEADOW GOLD BUTTER.

We never tire of telling the good qualities of Meadow Gold Butter. It is pure, clean and of a most delicate flavor. These good qualities are retained and preserved by the package, which is air tight, moisture and odor proof.

OUR BAKERY.

Why not use our bread? It is made according to the most approved methods. It contains nothing that could by the remotest possibility be injurious to the health. It is sweet to the taste, clean to the sight and always fresh. Made only from the highest grade Kansas flour.

MEAT MARKET.

Only the choicest cuts of packing house corn fed beef, mutton and lamb are cut in our market. Give us a trial when you want something nice in the way of meats, bacon, hams, boiled ham, etc.

IMPERIAL FLOUR.

Our trade on Imperial Flour has been very satisfactory, but we would like every one in Santa Fe to use it who can appreciate its remarkable qualities. It makes the best of bread and is also a fine pastry flour. Probably the best pastry cook in the Southwest will use no other brand.

50 pound sack\$1.65

SOUTH SEA BLEND.

There has been a remarkable advance in the price of medium grade coffees. We are still selling South Sea Blend at 25 Cents per pound. We fear that we shall not be able to continue to do this much longer. Better buy sixty days' supply now.

FRUITS AND VEGETABLES.

We always have what the market affords in the way of fruits and vegetables.

HAY AND GRAIN.

We shall be pleased to fill your orders for hay, grain, feed, etc. Our stocks are always complete, the quality of the best and prices reasonable. See that your animals are well fed. We can do it for you.

THE SANTA FE CENTRAL NOT SOLD

The Goulds Have Thus Far Failed to Secure the Coveted Property—Prompt Denial by President W. H. Andrews of Story.

"The Goulds have purchased the Denver & El Paso Short Line, which runs from Santa Fe to Torrance, 116 miles, and will build in the gap of 165 miles between Torrance and El Paso. This will put Denver in a direct line with El Paso, via Alamosa and Salida or Walsenburg. It will also give Denver direct connection with Mexico and the Pacific coast over the Gould system of railroads.

"The transfer of the Short Line was made the first of the week, and the Gould people are now preparing to commence work on the extension. The new acquisition and the proposed new construction of the gap in question is a matter of great moment in the railroad world. The Goulds own the Texas Pacific system from El Paso through Texas, up through Arkansas and over the Iron Mountain road to St. Louis, as well as through Louisiana to New Orleans. Since the Rock Island built through Dalhart, Texas, from Kansas City the Texas Pacific has been shorn of much of the vast business to and from that Texas border city and gateway to Mexico.

"The Goulds have been trying to secure an offset to this loss of advantage and to encompass this the rival road has acquired the Santa Fe Central for the purpose of extending it. By extending it to El Paso not only is a direct line made to the Rocky Mountain country with all its vast resources but also one to the east over the Gould system. An agreement has been entered into before the purchase of the Short Line by the Goulds and the Santa Fe Central people that the line should not be extended from Santa Fe. And in order to avoid breaking this agreement the Goulds will build the extension from El Paso to Torrance. While the move is a clever piece of work, it does not violate the stipulation in question.

"With this next line Denver will be brought closer to the New Mexico and Texas fields. It means a wider business scope for Denver and a greater market for the manufactured agricultural and mineral products of Colorado. Another thing it means is that the Mexican ores will be brought direct to Denver via El Paso for smelting. It is estimated that this industry alone will be benefited double by the new line."

The above circumstantial story from the Denver Republican, was shown Senator W. H. Andrews, president of the Santa Fe Central Railway Company, last evening upon his return from a trip to Taos. He read it carefully and laughed. "As president of the Santa Fe Central I should certainly have an inkling of the above if it is a fact, but I haven't. It is an old story in a new guise that has been floating about ever since the Santa Fe Central was built, and which was revived by the resumption of construction work on the Albuquerque Eastern, and the survey of extensions from Torrance to Roswell and El Paso, and from Albuquerque to Durango, Colorado."

REPUBLICAN CLUB AT CARLSBAD

Was Organized Yesterday With Large Membership—Eddy County Will Poll Big Vote.

Special to the New Mexican.

Carlsbad, N. M., Oct. 15.—A Republican club has been organized with R. S. Benson as president and John T. Bolton, secretary. A large number of members were enrolled and much enthusiasm was manifested. Several meetings have been arranged for the near future and Eddy County will give the largest Republican vote in its history.

FUNDS FOR INVESTMENT

LARGE AMOUNT OF FOREIGN AND DOMESTIC FUNDS on hand for investment in developed properties and established industries. Apply to

HENRY J. DEXTER, COUNSELLOR AT LAW, 52 BROADWAY, NEW YORK.

WANTED.—A large manufacturing concern about to open distributing depot in this section, desires services of responsible man to take management. Salary \$1,800 per annum and commissions. Applicant must furnish first-class references and \$1,750 to \$2,500 cash. Merchandise furnished. Address Manufacturer, care Nelson Chessman Company, Chicago, Ill.

"The Grand Canon of Arizona," a superbly illustrated volume of 124 pages. Fifty cents a copy. Apply to H. J. Lutz, city agent of the Atchison, Topeka and Santa Fe Railway in the Catron Block.

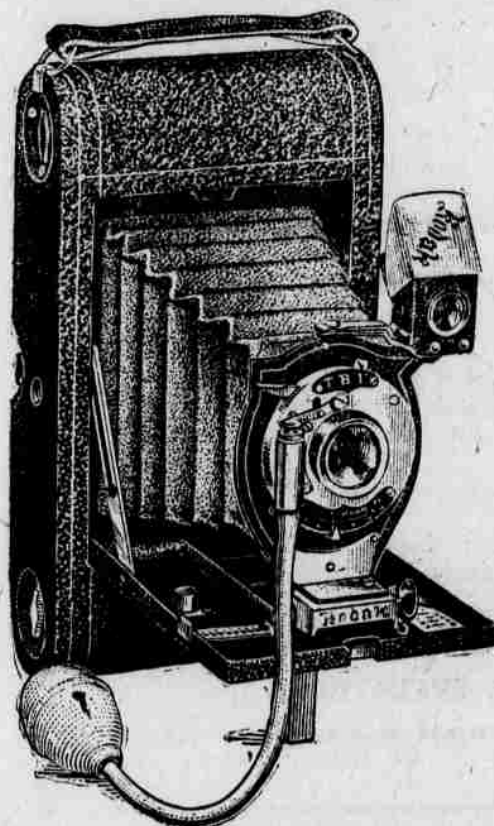
Engraved visiting cards with or without plate furnished by the New Mexican Printing Company.

If you want to get to the World's Fair easy, miss the rush at Union Station, St. Louis, leave the cars right at the World's Fair gates, take the Santa Fe Central and Rock Island.

The New Mexican Printing Company will do your job work with neatness and dispatch.

Going to the Fair?Take a **KODAK** With You

SEE OUR WINDOW DISPLAY

All Styles and Prices, from \$1 to \$35
ALL KINDS OF SUPPLIES

No. 3 A. Folding Pocket Kodak, \$20.00.

FISCHER DRUG CO.

230 San Francisco Street : Santa Fe, N. M.

NEW -- CASH -- STOREJackets for Ladies and Children,
Wool Skirts, Misses Skirts and Furs.Wool Shirt Waists, Ladies and
Misses Hats.Men and Boy's Winter : : :
: : : Suits and Overcoats.

Wool and Silk Shawls, Facinators,

* Winter Underwear. *

Brown Shoe Co., Shoes for Men,

Women and Children.

Wool Dress Goods, Ladies Wool Gloves.

Men Fancy Wool Shirts, Men's Hats, Men's

Gloves, Ladies Blouses, Winter Caps,

Infants Cloaks.

JOHN KOURY, Telephone 148

Santa Fe, - - - New Mexico.

Catron Block, East Side Plaza.

**H. C. YONTZ MANUFACTURER OF --
Mexican Filigree Jewelry**

DEALER IN

Watches, Clocks, Jewelry and Hand Painted China.

Repairing of fine watches and jewelry work a specialty.

SILVER, BRASS and INDIAN GOODS * FILIGREE at WHOLESALE and RETAIL
247 San Francisco St.**There is Only One****ROUND OAK.**

It is made by Beckwith, Dowagiac. We sell it. Beware of imitation that is "just as good." You can tell the

Round Oak by the name on the leg and door. They are the best stoves science can produce. A true American product. They always satisfy. Don't experiment see them at our store.

W. H. GOEBEL
The Hardware
Dealer.

Santa Fe, N. M.

Miss. A. Mugler.Shows fine assortment of
MISSSES & LADIES CAPS
Latest patterns

Also

FALL and WINTER GLOVES

And the finest line of
PILLOW TOPS,
CORD, CORD and
TASSELS, ETC.

→ SOUTH - EAST CORNER PLAZA ←

Keep your business ever before the public by advertising in your home paper. A good advertiser always has success in any honest enterprise.



DO YOU WANT TO SAVE \$15?

You'll do it, if you buy a Colonist ticket to California from me between now and October 15. Tickets will cost more later on. Fast trains. Pullman Sleepers daily. Excursions under personal escort three times a week. Liberal stopovers.

I'd like to tell you about this.
H. S. LUTZ,
Ticket Agent.

A. B. CRAYCRAFT,

PHOTOGRAPHER

Makes this suggestion to you

Come and see me if you
want the finest

PHOTOS AND VIEWS

Ever made in the city

MY SPECIALTY IS TO PLEASE YOU!

Developing and Finishing
Kodak Work to Order :

* Plaza Studio *

ST. MICHAEL'S COLLEGE

Santa Fe, New Mexico.



THE 46TH YEAR BEGINS SEP. 1, 1904.

The College is empowered by law to issue FIRST-CLASS TEACHERS' CERTIFICATES to its Graduates, which Certificates are to be honored by School Directors in the Territory of New Mexico.

BROTHER BOTULPH, President.

Tablets for School Children, 10 cents per Pound. New Mexican Printing Co.

GOLD'S OLD CURIOSITY SHOPCLOSING
OUT
SALE!

Wishing to retire from business I will sell my entire stock of
INDIAN and MEXICAN BLANKETS, POTTERY
BASKETS, DRAWN WORK, CURIOS, ETC.

At less than Cost.

TOURISTS:

Do you know that you miss half of Santa Fe if
you do not visit our Curio Store & Free Museum

Sign of the Old Cart

Send for Catalogue

Cor. San Francisco Street and Burro Alley