

9-20-1904

Santa Fe New Mexican, 09-20-1904

New Mexican Printing Company

Follow this and additional works at: https://digitalrepository.unm.edu/sfnm_news

Recommended Citation

New Mexican Printing Company. "Santa Fe New Mexican, 09-20-1904." (1904). https://digitalrepository.unm.edu/sfnm_news/2068

This Newspaper is brought to you for free and open access by the New Mexico Historical Newspapers at UNM Digital Repository. It has been accepted for inclusion in Santa Fe New Mexican, 1883-1913 by an authorized administrator of UNM Digital Repository. For more information, please contact disc@unm.edu.

CRANK TAKEN INTO CUSTODY

Police of Oyster Bay Arrest Suspicious Man Who Wanted to See President.

IS PROBABLY INSANE

Claimed He Died and Went to Heaven in an Automobile Six Years Ago.

Oyster Bay, Sept. 20.—A man regarded as a dangerous crank was apprehended here today. He is J. E. Reeves, and was making his way to Sagamore Hill when arrested. He said he died in Jersey City six years ago and went to heaven in an automobile. While there he received an important message for President Roosevelt which he was directed to deliver personally. He was taken before a justice of the peace and was bound over as an insane person. He had no weapon on his person.

MAY FUSE WITH DEMOCRATS

Populists and Labor Parties Meet in Convention in Montana Today.

Helena, Mont., Sept. 20.—In advance of the convening of the state conventions of the Populist and Labor parties at Helena, today the surface indications are that a strong effort will be made to induce both parties to endorse the nominations made by the Democratic state convention. There is an element in both parties, however, opposed to this plan and in favor of putting up an independent ticket composed of state candidates chosen from the labor and Populist parties. Indications point to lively scenes when the convention meets this evening. Many leaders of the Democratic party are on the ground.

INDIANS WILL BE PROTECTED

Government Issues Order Which Prevents Fraud and Robbery Being Practiced.

Washington, D. C., Sept. 20.—One of the most drastic orders ever issued by the government for the protection of the several Indian tribes against robbery and fraud, was promulgated today by Acting Secretary of the Interior Ryan. The order amends the rules for the sale of inherited Indian lands, so as to require that the proceeds to be derived from their sale shall be placed to the credit of each heir in proper proportion with the most convenient United States depository, subject to the check of such heirs or their recognized guardians, for amounts not exceeding ten dollars in any one month.

SERIOUS RIOTS IN LONDON

Day of Atonement in the English Metropolis Causes Much Disorder.

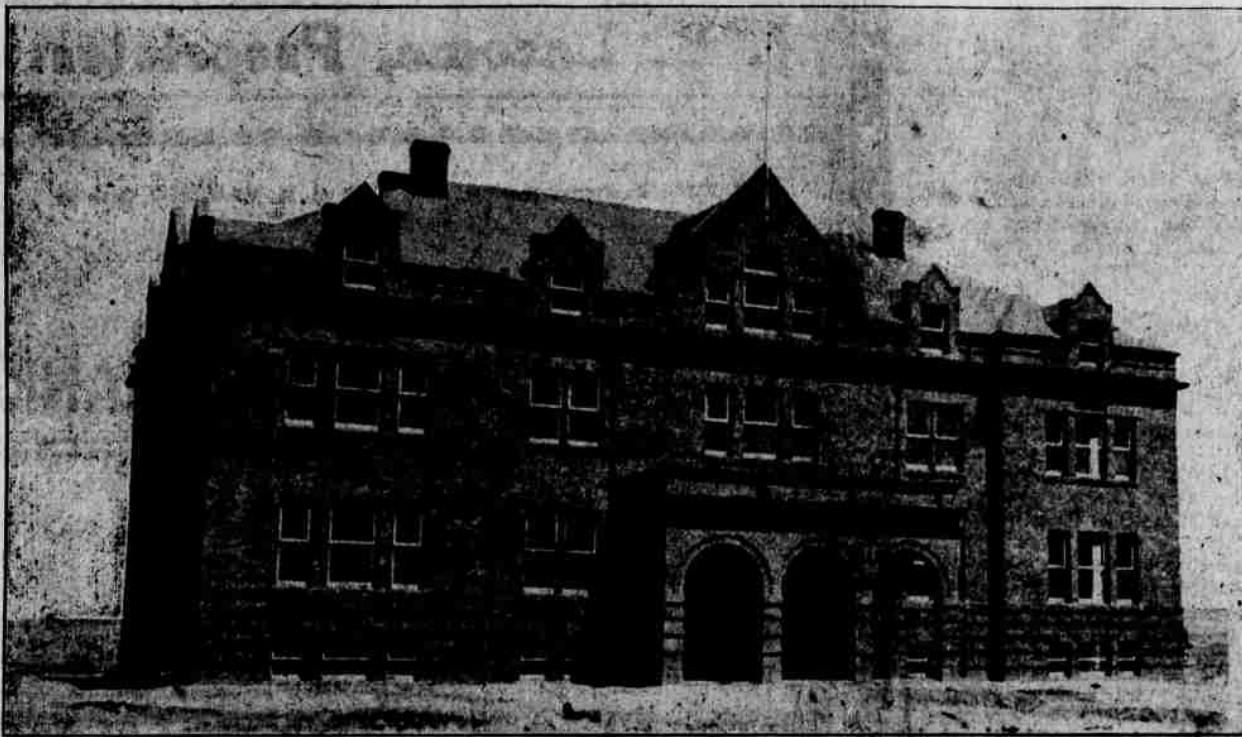
London, Sept. 20.—The day of atonement was marked in London by serious riots in the Jewish quarters in the east end. Over two thousand Jews engaged in the disturbance and nearly three hundred police were called before the disorder was quelled. The trouble arose over the action of the non-conforming members of the social democratic Jewish club parading in disregard of the fasting injunction and celebrating with wines at their club house. The orthodox Jews were angered and surrounded the club house and stoned it. The socialists threw bottles and two or three narrow streets in the vicinity were soon crowded with fighting throngs.

IOWA VISITED BY BAD STORM

Terrific Wind, Hail and Rain Ruins Thousands of Dollars' Worth of Property.

Des Moines, Iowa, Sept. 20.—A terrific wind, hail and rain storm has damaged many thousands of dollars' worth of property at Oskaloosa. Buildings occupied by the Spencer Wholesale Grocery firm were demolished, the Illinois Central station was unroofed and practically all the business houses in the city were damaged more or less severely. Reports from other parts of the state indicate the severity of the storm. At Albia, hail fell to a depth of five inches.

Scenic New Mexico.



INSTITUTE FOR THE DEAF AND DUMB AT SANTA FE.

NEW HAMPSHIRE REPUBLICANS

Met in State Convention Today at Concord and Nominated McLane for Governor.

Concord, N. H., Sept. 20.—John McLane was nominated for governor by the Republican State Convention here today. The candidates for presidential electors were also chosen. There were no other nominations, as all other state officers except the governor are appointive.

DEATH OF SALY RAUNHEIM

He Opened Up the Principal Copper Mines in Montana—Was Well Known in Santa Fe County.

The following obituary on the death of Saly Raunheim, who was very well known in Santa Fe, and a frequent visitor to this city, appeared in the issue of September 14 of the New York Herald:

"Saly Raunheim, formerly superintendent of the Montana Copper Company, and one of the old pioneers of Butte City, and a well known mining engineer with offices at No. 290 Broadway, New York City, died suddenly last Friday, September 9th, at his home 1242 Madison Avenue, and was buried yesterday.

"He was born in Frankfurt on the Main, Germany, in 1838, being educated at Heidelberg and Freiberg, at the latter place studying Chemistry under the celebrated Professor Boettger, the inventor of gun cotton. In 1879, Mr. Raunheim was persuaded to come to this country by the Lewisohns to investigate and take charge of the development of their copper interests in Montana, which were just then beginning to attract attention.

"From Butte City he continued his work and was identified with the opening and development of most of the mines which are now merged in the Amalgamated Copper Company's holdings. From 1888 to 1891 he was superintendent and general agent of the Santa Fe Copper Company at San Pedro, in Santa Fe County, New Mexico, and took quite active interest in the development of Santa Fe County. He is survived by five sons and four daughters."

BALL GAME NEXT SUNDAY

Excursion Will Be Run to This City From Albuquerque For the Occasion.

A big excursion will be run from Albuquerque to this city on Sunday next. It will be under the auspices of the Territorial Fair Association of Albuquerque and will be in charge of the committees from the various lodges of that city.

The train will consist of six cars and will leave Albuquerque at 7 o'clock in the morning and arrive in the Capital City about noon. The rate for the round trip will be \$2. The cars will be gaily decorated for the occasion and will represent the various lodges.

The feature of the excursion will be the ball game in the afternoon between the Duke City Browns and the Santa Fe Central team. The game will be a hot one as both teams have been playing glit-edged ball of late.

Preparations are being made by the various local lodges and the visitors will be royally entertained during their stay in the city.

PORT ARTHUR IS BEING STORMED

Japanese Have Begun General Attack By Land and Sea—Have Succeeded in Capturing Outer Forts.

Active hostilities, so far as today's news from the seat of war is concerned, were manifested only at Port Arthur, where the Japanese resumed the attack of yesterday by land and sea. They are reported to have captured two important forts. Kuropatkin reports to St. Petersburg that the Japanese position at Bentshiapize is strongly held by the Japanese brigade with guns, and that the large Japanese forces from Liao Yang have already crossed to the right bank of the Taitse River.

Have Crossed Taitse River.

St. Petersburg, Sept. 20.—The following dispatch has been received from General Kuropatkin: "Reconnaissance made September 17th established the fact that the Japanese position at Banputze is strongly held by a brigade with guns. There was no enemy east of Banputze but the Japanese reinforcements arrived September 18th in the vicinity of that village. Large Japanese forces from Liao Yang have already crossed to the right bank of the Taitse River."

Two Attacks Repulsed.

St. Petersburg, Sept. 20.—Lieutenant General Stoessel, commanding the Russian military forces at Port Arthur, reports by telegraph that on the night of September 16th the garrison repulsed two attacks on the redoubt protecting the water works. Following is the dispatch in brief: "Port Arthur, Sept. 16.—The enemy continues daily to bombard the forts and batteries inside the fortress, but still without showing any great activity. The wounded are recovering and eagerly resume their places in the ranks. They are heroes. Troops are in excellent spirits. At about three this morning, (Sept. 16th), at least one Japanese battalion attacked a redoubt protecting the water works. The garrison of the redoubt repulsed the attack after half an hour. The garrison repulsed them with rifles and machine guns, supported by the artillery. The Japanese sustained great losses and did not again attempt to take the offensive."

Attack Is Resumed.

Shanghai, Sept. 20.—A general attack on Port Arthur, which began yesterday, and with which the Japanese fleet is co-operating, was resumed this morning. The Japanese captured two important forts on either side of Suiseyung, north of Port Arthur.

Captured Many Stores.

Tokio, Sept. 20.—Field Marshal Oyama, commanding the Japanese forces in Manchuria, telegraphed today as follows: "An investigation of the trophies captured by us, made since our last report, shows the number of Russian buildings occupied by us in the neighborhood of Liao Yang station to be 253 houses and 214 warehouses. We also seized 791,360 bushels of barley, rice, wheat and millet, 1,300 cases of kerosene, 1,800 cases of sugar, 166 tons of coal and much cordwood."

Another Attack on Port Arthur.

Che Foo, Sept. 20.—Authoritative information has been received here of a general attack upon Port Arthur by the Japanese forces which began yesterday before daybreak and continued

until dark. All indications point to an effort to capture a certain portion of the northeast main forts.

This is the attack for which the Japanese have been preparing for the past nineteen days, with slight hope of success. As aforesaid, the Japanese attack on Port Arthur is directed against the northeast front. The main object is to capture the fortifications on Kikwan Mountain, Rihlung Mountain and the intermediate forts. The foregoing comes from a Russian of high standing whose previous information has been correct. He adds that the attack at the end of August, which was reported as two separate assaults, really constituted a ten-days' battle, the fighting being the heaviest during the first three days and the last four days of that period, although the Japanese retired August 31st along the greater part of their line, they remained in four supplementary forts on the northeast front, which they captured from the Russians. These include two forts, fifty yards from Rihlung Mountain, and two others at a somewhat greater distance. Since August 31st the Japanese have bombarded very slightly, while the Russians have been throwing approximately a thousand shells daily, chiefly against the Japanese positions mentioned. Small sorties in efforts to recapture the positions have been made almost nightly and have been uniformly unsuccessful. The Japanese have been taught to respect the resisting power of the fortress, according to every Japanese who has recently arrived here from Port Dalny. If they succeed in capturing Rihlung Mountain or other forts they will realize that this will only be one step, although an important one, towards the capture of Port Arthur. Russians who have been observing the new tactics of the Japanese, did not expect a new attack of the Japanese before the first of October. The Japanese are endeavoring to proceed slowly but surely. During the fighting August 16th an attempt to capture Kikwan Mountain cost the Japanese an entire regiment. This statement has been absolutely confirmed and indicates the monumental proportions of the task which the Japanese have set themselves to in an attempt to capture the fortress, which is composed of many forts equally as strong.

POPULISTS HOPE TO GAIN VOTES

Believe They Can Build Up Sufficient Strength to Make Petitions Unnecessary.

Joliet, Ill., Sept. 20.—The national Populist committee has announced that it will have presidential electors for Watson and Tibbles in every state in the Union with the possible exception of two. The committee hopes to build up sufficient strength at this election to make petitions unnecessary four years hence.

LATEST POLITICAL POINTERS

A convention of the Independent Republican party (whatever that may mean) has been called to meet in Las Vegas at 10 o'clock in the forenoon on September 26th for the purpose of considering the situation and putting a ticket in the field. The following names are signed to the call: Margarito Romero, president; Marcelino Martinez, secretary; Juan Gallegos, Felipe Delgado y Lucero, Romulo Ulibarri, Ramon de Herrera, Benigno Romero, committee.

John C. Spears, of Gallup, present treasurer and ex-officio collector of McKinley County, and W. A. Smith of the same town and present sheriff of the county, have announced themselves as candidates for re-election, subject to the nomination of the Republican party there. Both are well known in Santa Fe and especially so is Mr. Smith, who for many years was a resident here. They have good official records and should they receive the nomination will, it is believed, be re-elected.

In Santa Fe County there is considerable talk concerning an independent Republican movement under the leadership of the Honorable T. B. Catron, former delegate to congress, and a fusion of these Independent Republicans with the Democratic faction here. How much there is of this cannot at present be determined. Should it come to pass, however, it will again prove the adage that politics makes strange bedfellows. It is certainly a singular spectacle to see Democrats of the stamp of Judge N. B. Laughlin and Charles F. Easley, who have for twenty or more years been bitterly opposed to Mr. Catron, join with him in these latter days.

The Republicans of the Representative district composed of the counties of Chaves, Eddy and Roosevelt may place Herbert J. Hagerman, of Roswell, in the field as their candidate for the district. While this may be considered a forlorn hope. Mr. Hagerman's nomination and making the race will have the effect of consolidating and uniting the Republicans there and will give interest and zest to the campaign which of course will redound to the benefit of the Territorial Republican campaign and will bring out additional votes for Senator Andrews. The Republicans of that section can be depended upon to do everything in their power to strengthen their party in that district and in the Territory.

Manuel Sanchez, of Las Trampas, who represented Rio Arriba County in the House of Representatives of the 34th legislative assembly, while in this city today said that the political situation from a Republican standpoint in his county was very favorable and that Rio Arriba would roll up a very handsome majority for Senator W. H. Andrews, the Republican candidate for delegate, and for the legislative and county tickets. He did not think that a successful independent movement could be inaugurated there, as the people were very well satisfied with the Territorial and county administrations and there was no dissatisfaction. With the right kind of legislative and county tickets he believes that the Republican majority there will be from 500 up.

In the Democratic primaries in Otero County on Saturday over 1,000 votes were cast. At the election in 1902, the Democrats of that county cast only 474 votes. Considering that Chaves, Roosevelt and Eddy Counties increased their Democratic vote in their recent primaries by over 1,200 compared to the vote two years ago, the Republicans will have to do some hustling to offset those gains. The county ticket nominated by the Otero County Democrats is as follows: Sheriff, James Hunter; treasurer and collector, I. N. Jackson; probate clerk, W. W. Stalcup; assessor, T. F. Fleming; probate judge, Francisco Borunda; superintendent of schools, C. R. Taylor; county commissioners, G. J. Wolfinger, J. P. Lewis; surveyor, W. H. Pelphrey.

From the south it is reported that J. A. Mahoney, of Deming, who has been nominated as the Democratic candidate for the council from the council district composed of the counties of Dona Ana, Otero, Luna and Grant, has not yet accepted and it is not known what he will do in the premises. A nominating committee of the Democracy of the district is comprised of W. B. Walton, of Silver City; J. A. Mahoney, Deming; Horton Moore, Las Cruces; Oliver Lee, Alamogordo. Major W. H. H. Llewellyn, of Las Cruces, has been nominated as Republican candidate for the same position and he also has not yet signified his acceptance, although it is believed that he will accept and make the race. Major Llewellyn is an exceptionally strong man in the district and if he concludes to run he will, according to reliable advices, be elected by a very handsome majority.

It will pay you to advertise. Try it

OFFICERS ELECTED

At National Convention of Odd Fellows in San Francisco Today.

MANY IN ATTENDANCE

Thousands of Members From all Parts of the Country Are Participating.

San Francisco, Sept. 20.—The meeting of the sovereign grand lodge has attracted many thousands of Odd Fellows and the number is rapidly being augmented by arrivals from western and coast points. The street decorations are lavish. The main feature of the meeting today of the grand lodge is the election of officers in which great interest is manifested.

Officers Elected.

San Francisco, Sept. 20.—The following officers were elected by the Odd Fellows: Grand Sire, Robert E. Wright, of Allentown, Pennsylvania; deputy grand sire, F. S. Conway, of Chicago; grand secretary, J. Frank Grant, of Baltimore; grand treasurer, M. Richard Muckie, of Philadelphia. Other officers will be appointed by the grand sire.

DEMOCRATS MEET IN NEW YORK

State Convention of That Party Convened at Saratoga This Morning.

Saratoga, N. Y., Sept. 20.—The Democratic state convention effected a preliminary organization today and took a recess until tomorrow. William B. Hornblower, of New York, was temporary chairman and addressed the convention at length.

NEW MEXICO TO BE REPRESENTED

At Portland Exposition Next Year—Display at World's Fair to Be Sent There.

Special Agent J. P. Marshall, of the Lewis & Clark Centennial Exposition, which will be held in Portland, Oregon, next year, was in Santa Fe last week arranging for a New Mexico exhibit at the Portland Fair. In speaking of the New Mexico exhibit at the St. Louis World's Fair, Mr. Marshall had the following to say:

"New Mexico has a very fine mineral, fruit and cereal exhibit now at St. Louis, which, upon the closing of that exposition, could be moved to Portland, as easily as returned home, and be in the good company of the foreign, United States Government, Eastern and Western exhibits which would be shipped there immediately upon the closing of the St. Louis Exposition. In the meantime, the legislature could take up the matter of replenishing and increasing it.

"The United States Government has appropriated \$475,000 for the purpose of erecting suitable buildings at Portland in which to place the magnificent \$300,000 exhibit it now has at St. Louis. The state of Oregon has appropriated \$450,000 for the state exhibit. The citizens of Portland have subscribed and paid into the treasury \$420,000. New York, Massachusetts, Montana, Utah and many other Eastern and Western states have made large appropriations for the purpose of moving and establishing their present exhibits in Portland.

"The United States Government and several large general buildings, such as the Agricultural, Liberal Arts and Foreign, are now under construction, and will be completed in the fall.

"The people of New Mexico should give the exposition the heartiest support because exposition advertising is the best in the world. Thousands of people from all over the West and East will be there and an attractive New Mexico exhibit would bring many investors to this section."

DISTRICT COURT.

Met This Morning and Transacted Some Minor Business—Will Meet Again Tomorrow.

The District Court of Santa Fe County opened this morning at ten o'clock. Judge John R. McPhe presiding, and the clerk, A. M. Bergers, at his desk. Two minor criminal cases were continued for the term, and the court then adjourned until tomorrow morning at ten o'clock, when the Territorial petit jury will be empaneled for the trial of civil and criminal cases arising on the Territorial side of the court.

SANTA FE NEW MEXICAN

THE NEW MEXICAN PRINTING COMPANY, PUBLISHERS.

MAX FROST, Editor
PAUL A. F. WALTER, Manager and Associate Editor.
PERCY F. KNIGHT, Secretary and Treasurer.

Entered as Second Class matter at the Santa Fe Postoffice.

RATES OF SUBSCRIPTION.	
Daily, per week, by carrier.....	25
Daily, per month, by carrier.....	\$1.00
Daily, per month, by mail.....	75
Daily, one year by mail.....	7.50
Weekly, six months, by mail.....	4.00
Weekly, three months, by mail.....	2.00
Weekly, per year.....	2.00
Weekly, six months.....	1.00
Weekly, per quarter.....	75
Weekly, per month.....	25

The New Mexican is the oldest newspaper in New Mexico. It is sent to every postoffice in the Territory, and has a large and growing circulation among the intelligent and progressive people of the Southwest.



"I DO NOT UNDERSTAND YOU NEW MEXICO PEOPLE! NONE OF YOU SHOULD BE WILLING TO ACCEPT JOINT STATEHOOD, AS YOU WILL GET SINGLE STATEHOOD JUST AS SOON AS JOINT STATEHOOD. MAKE YOUR FIGHT ON THE SINGLE STATEHOOD LINE; I WILL HELP YOU HERE AND IN WASHINGTON!" REMARKS OF AN INFLUENTIAL MEMBER OF THE COMMITTEE ON RESOLUTIONS IN THE CHICAGO REPUBLICAN CONVENTION. THIS MAN HOLDS ONE OF THE MOST IMPORTANT PUBLIC POSITIONS IN HIS STATE AND IS PROMINENT AND STRONG IN THE NATION'S CAPITAL.

CHANGE IN NATIONAL DEMOCRATIC MANAGERS.

News was flashed over the wires on Saturday that by the decision of Judge Alton Brooks Parker, a new deal is to be made in the management of the Democratic National campaign and that United States Senator, Arthur Pue Gorman, of Maryland, is to be the virtual head and front of the Democratic National Committee. The candidate at Esopus has discovered that Chairman "Telephone Tom" is not the competent, astute and efficient campaign manager that he was represented to be and has learned during the past few weeks that the aforesaid Telephone Tom falls far short from what he ought to be in the Democratic campaign managing line.

Whether this change in campaign management and in political leadership at this time will benefit the Parker and Davis ticket is problematical. Upon the principle that it is never too late to mend and that there is always hope before election it may do the National Democratic ticket some good, as Senator Gorman is a very shrewd political manager, although during the past two years he has committed egregious political blunders such as advocating anti-imperialism, fighting the Panama canal policy of the administration and plunging into the negro question on the side of the unthinking and unreasonable part of the population of the Southern states. Still, he is a much better man than "Telephone Tom" Taggart for the position, and after all Telephone Tom represents a bad element of the Democracy. Commenting upon the record so far made by Chairman Tom, the Chicago Chronicle says that there can be no doubt that the Democratic chieftains of the eastern states, including both Parker and Mr. Davis, are thoroughly dissatisfied with Tom Taggart as campaign field marshal and convinced that his appointment to that important office was a grave mistake.

They now know, if they did not know when they consented to his appointment, that he comes a great deal short of the stature of a capable campaign manager. They see that by his appointment of wild Bryanites to responsible posts and transplanting them from their native West to the East and by their gross blunders, or worse, he has disgusted the more conservative Democrats of the East and dampened the ardor of those to whom the party looked for the sneers of war.

What we hear of the anxious conference between the candidates and certain Eastern leaders in New York the other day makes this all plain enough, if it was not plain enough before.

It is not to be doubted that the Eastern leaders would gladly be rid of Taggart if they could, and put some one in his place who is something more than a small ward politician and who at the same time can remove the painful impression from the Eastern minds that the Democratic party is nothing better than a political aggregation controlled by Southern negro baiters and Western Bryanites.

But here is where they are at their wit's ends. The time to get rid of Taggart was before they consented to his appointment. They can not do it now without driving away voters whose votes are indispensable, and Mr. Parker only the other day warned the Democratic editors against that. They can

not have him in the position of nominal manager and at the same time strip him of power and move him away from the party headquarters in New York for the same reason.

They are in a perplexity from which there is no deliverance. Such a party could not reasonably expect anything else.

THE NEW MEXICAN HISTORICAL SOCIETY.

Through the efforts of Ex-Governor L. Bradford Prince, the New Mexican Historical Society has just acquired copies of the original documents relating to the Spanish Conquest, which originals had been destroyed by fire and whose destruction would have been an irretrievable loss but for the foresight of General Davis, of Doylestown, Pennsylvania, who had copies made of them at the time he was acting governor of this Territory.

This acquisition by the Society is noteworthy and calls for the attention to the good work that is being done by it to preserve the records and the relics of the past. It is true, the labor has thus far fallen upon a few who without recompense and little praise have been giving their time and often their means towards furthering the objects of the Society. These objects are of interest to the entire people of the Territory and of value not only to this but also to future generations. The Territory should therefore support the Society and its work liberally. An appropriation of \$2,500 a year by the next legislative assembly would not be too much, and a grant of the use of the entire Old Palace at Santa Fe, excepting that portion occupied by the United States Post Office, has become imperative for the better housing of the archives and the collections of the Society, whose value can hardly be expressed in dollars and cents.

A POPULAR CANDIDATE.

The Carlsbad Argus, although published in a strong Democratic county, always battles valiantly for Republican principles and Republican success. In commenting upon the nomination of Senator W. H. Andrews as the Republican candidate for delegate to the 59th Congress, the paper says:

"But the Republicans of the Territory, in convention assembled, have decreed another man shall lead them to victory at the polls on next November, and the Argus, notwithstanding its loyal support of Delegate Rodey, with all good Republicans, bows to the will of the party. It may be that Mr. Rodey would have polled more votes in this county, or perhaps in the southern portion of the Territory, but as in all things pertaining to Republican politics, the wishes of Eddy County and the Pecos Valley do not count much, apparently, with the powers that be.

"The man nominated for delegate is the Hon. W. H. Andrews, of Bernalillo County, who was formerly a state senator in the Pennsylvania legislature, and the late Senator Quay's political manager. He is president of the Santa Fe Central Railway, is building the Albuquerque Eastern Railway into Albuquerque, was a member of the last Territorial legislative council and, being identified with no faction, is very popular."

THE REPUBLICANS ARE FOR SINGLE STATEHOOD.

Single statehood for New Mexico will be one of the battle cries of the present campaign on the Republican side. The Republican Territorial Convention has placed itself unequivocally on the side of the people on this question, whereas the Democratic Territorial platform simply contains an affirmation of the statehood plank in the Democratic National Platform and then undoes this by a willy-nilly meaningless old womanish declaration which says to Congress, "if you cannot give us the new suit of statehood clothes we desire, we will take any bundle of old clothes tainted with miasma, and full of bacteria and disease germs to please you." The Carlsbad Argus sets forth the Republican position in the following few and terse, but very expressive editorial lines: "The Republicans of New Mexico know what they want, what they are entitled to, and will accept nothing else. They have declared for admission as a single state, and will fight for their rights."

HE DOES THINGS.

Senator Andrews, the Republican nominee for delegate to the 59th Congress, is a successful business man, and during the past ten years has induced the investment of millions of dollars of outside capital in New Mexico enterprises. If elected, and there is every reason to believe that he will be, he will do still better work for the people of this Territory in and out of Congress. Facts and accomplishments speak for themselves and certainly Senator Andrews is the man who is responsible for the building of the Santa Fe Central Railway from Santa Fe to Torrance, 120 miles, and for the construction of the Albuquerque Eastern Railroad with the branch to the Hagan Coal fields now in progress.

"Hon H. O. Bursum is now chairman of the Republican Territorial Central Committee. No man in New Mexico is better fitted than he is for the duties of that responsible position. His friends know it and his enemies will find it out."—Socorro Chieftain.

The opinion expressed above is true and to the point.

A Quart Baby.

Now and again there is an item in the newspapers concerning the birth of a puny baby so small that a quart cup holds it comfortably. If the article told all the facts it would probably tell also of a mother who in weakness and misery had looked forward to the baby's advent with shrinking and fear.

To have fine, healthy children the mother must be healthy, and it is the common testimony of mothers that the use of Dr. Pierce's Favorite Prescription not only promotes the mother's health but also gives her strength to give her child.

"Favorite Prescription" accomplishes these results by tranquilizing the nerves, promoting a healthy appetite, and giving rest and vigor to the system. It is the best of tonics for nursing mothers.

"I gladly recommend Dr. Pierce's Favorite Prescription," writes Mrs. J. W. G. Stephens, of Mills, Northumberland Co., Va. "Before my third little boy was born I took six bottles. He is the finest child and has been born from birth, and I suffered very much less than I ever did before. I unhesitatingly advise expectant mothers to use the 'Favorite Prescription.'"

Dr. Pierce now feels fully warranted in offering to pay \$500 in legal money of the United States, for any case of Leucorrhoea, Female Weakness, Prolapsus, or Falling of Womb which he cannot cure. All he asks is a fair and reasonable trial of his means of cure.

Dr. Pierce's Common Sense Medical Adviser, containing 1008 pages, is sent free on receipt of stamps to pay expense of mailing only. Send 31 one-cent stamps for the cloth-bound volume, or only 21 stamps for the book in paper covers. Address Dr. R. V. Pierce, Buffalo, N. Y.

If the Democratic campaign leaders were of the opinion that Colonel Roosevelt objected to having his personality made an issue in the present campaign, they are certainly rapidly finding out that they have been sadly mistaken. President Roosevelt's personality is so clean, so moral and so strong that the placing of it in the public eye and exposing it to the calumny light of public opinion cannot be but beneficial to his chances for election to the highest office on God's green earth.

The Democrats of Wisconsin have what they consider a serious grievance against President Roosevelt. It seems that at the recent launching of the cruiser Milwaukee in the harbor of San Francisco a bottle of champagne was broken over the bow of the ship instead of a bottle of Milwaukee beer. It is well known that the Democracy of Wisconsin, leaders, bosses, and rank and file, swear by Milwaukee beer, and think it better than the best brand of champagne, the costliest of Tokay and the most precious Maderia.

Should Judge Alton Brooks Parker be successful and be elected to the Presidency of this great country, it is reported that Ex-Senator David B. Hill will look upon his announced intention to retire from politics on January 1st, 1905 as one of those New Year's intentions made to be broken, the chances are, however, that he will have no chance to break them.

A Milwaukee brawler has just managed to escape the clutches of the law upon a singular plea made by his friends. This was, that his trial and conviction would give that town a black eye. They are carrying sectionalism a little too far in Milwaukee.

The Tammany officeholder who returned \$6.00 to the city treasury, claiming that he was overpaid that amount, is not as crazy as he might be. He was not satisfied with the smallness of the sum, hence the return of it.

It is said that there will be a Republican landslide in Illinois on November 8th and that the Republican majority will be tremendous. This may be accounted for partly by the fact that the Republican campaign managers are keeping Governor Yates off the stump.

It is reported from White Sulphur Springs that Ex-Senator Henry G. Davis, Democratic candidate for the vice-Presidency, does no longer care to attend dances. This is strange, indeed.

How's This?

We Offer One Hundred Dollars Reward for any case of Catarrh that cannot be cured by Hall's Catarrh Cure.

F. J. CHENEY & CO., Toledo, O. We, the undersigned, have known F. J. Cheney for the last 15 years, and believe him perfectly honorable in all business transactions and financially able to carry out any obligations made by this firm.

WALDING, KINN & MYRIN, Wholesale Druggists, Toledo, O. Hall's Catarrh Cure is taken internally, acting directly upon the blood and mucous surfaces of the system. Testimonials sent free. Price 75 cents per bottle. Sold by all Druggists. Take Hall's Family Pills for constipation.

Notice for Publication.

(Homestead Entry No. 7979.)

DEPARTMENT OF THE INTERIOR. Land Office at Santa Fe, N. M., Sept. 15, 1904.—Notice is hereby given that the following named settler has filed notice of his intention to make final proof in support of his claim, and that said proof will be made before the register or receiver at Santa Fe, N. M., on Oct. 25, 1904, viz: Cosme D. Carrillo for the Lots 3 and 4, N. 1/2, sec. 36, township 18 north, range 10 east. He names the following witnesses to prove his continuous residence upon and cultivation of said land, viz: Octaviano Rodriguez, Nicolas Baca, Pedro G. Ortiz, Luciano Ortiz all of Santa Fe, N. M.

MANUEL R. OZENO, Register.

Keep your business ever before the public by advertising in your home paper. A good advertiser always has success in any honest enterprise.

THE OXFORD CLUB

Has on hand a constant supply of the finest brands of WINES, LIQUORS AND CIGARS All the Popular Games.

SAN FRANCISCO ST., SANTA FE, N. M.

J. E. Lacombe, Proprietor.

R. J. PALER, President.

J. E. VAUGHN, Cashier.

HENRY L. WALDO, Vice President.

THE FIRST NATIONAL BANK

SANTA FE, NEW MEXICO

United States Designated Depository.

Renovated and Refurnished Throughout.

Cuisine and Table Service Unexcelled.

The Palace Hotel

WILLIAM VAUGHN, PROP.

Large Sample Rooms for Commercial Men.

Santa Fe New Mexico

Excerpt from the Dictionary of the

Equitable Life Assurance Society

AFFLUENCE, r.—An influx of money to the credit of one who applies a small portion of income to an Equitable Life Insurance Policy.

2—Abundance of property; wealth.

"An old age of elegance, Affluence and ease."

Secure it now and save regrets in your old age.

90 per cent of the business ventures fail. A policy in the EQUITABLE may save you.

MRS. L. A. HARVEY, Agent.

102 Chapelle St., Santa Fe, N. M.

A. P. HOGLE

Undertaker and Funeral Director

GALISTEO STREET

Best of Reference Given as an EMBALMER. Night Calls

RESIDENCE PHONE 141.

Table Wines!

AT "OUR PLACE"

Will Be Found a Full Line of Table Wines for Family Trade. Orders by Telephone Will Be Promptly Filled.

W. R. PRICE, Prop.

Santa Fe, N. M.

P. F. HANLEY

DEALER IN

Fine Wines, Liquors & Cigars

Imported and Native Wines for Family Use.

OUR SPECIALTIES—Old Cognac, Brandy, Champagne, Port, Whisky and Pisco, Old Scotch and Whisky, and Cognac, N. Y.

SAN FRANCISCO STREET

SANTA FE, N. M.

PROFESSIONAL CARDS.

Attorneys at Law.

MAX. FROST, Attorney at Law.
Santa Fe : : : New Mexico

EDWARD L. BARTLETT, Lawyer, Santa Fe, New Mexico. Office in the Capitol.

RICHARD H. HANNA, Attorney at Law, Phone 66. Offices Griffin Block.

EUGENE A. FISKE, Attorney and Counselor at Law, Santa Fe, N. M. Supreme and District Court Practice.

BENJAMIN M. READ, Attorney at Law, Santa Fe, N. M. Office Sena Block. Palace Ave.

WILLIAM H. H. LLEWELLYN, Attorney-at-Law, Las Cruces, New Mexico, District attorney for Dona Ana, Otero, Grant, Luna and Sierra Counties. Third Judicial District.

CHAS. F. EASLEY, (Late Surveyor General.) Attorney-at-Law, Santa Fe, N. M. Land and mining business a specialty.

E. C. ABBOTT, Attorney-at-Law. Practices in the District and Supreme Courts. Prompt and careful attention given to all business. District Attorney for the Counties of Santa Fe, Rio Arriba, Taos and San Juan. Santa Fe, N. M.

EDWARD C. WADE, Attorney-at-Law. Practices in all the courts. "Mining cases and mineral patents a specialty." LAS CRUCES, NEW MEXICO.

FRANK W. CLANCY, Attorney-at-Law. (District Attorney 2d Judicial District.) Practices in the District Courts and the Supreme Court of the Territory, also before the United States Supreme Court in Washington. ALBUQUERQUE - - NEW MEXICO.

A. B. RENNAN, Attorney-at-Law. Practices in the Supreme and District Court. Mining and Land Law a specialty. Rooms 8 and 9, Sena Building, Palace Avenue, Santa Fe, N. M.

OSTEOPATHY

DR. CHARLES A. WHEELON, Osteopath. No. 108 Palace Avenue. Successfully treats acute and chronic diseases without drugs or medicines. No Charge for Consultation. Hours: 9-12 m., 2-5 p. m. Phone 156.

DENTISTS

DR. C. N. LORD, Office, Kahn Block, over Spitt's Jewelry Store. South Side of Plaza.

C. O. HARRISON, D. D. S., Office: Over Fischer's Drug Store. On the Plaza. (Successor to Dr. Manley.)

Civil Engineers & Surveyors

JAY TURLEY, Civil Engineer and Surveyor, Irrigation Work a Specialty. U. S. Deputy Mineral Surveyor. Santa Fe, N. M.

G. A. COLLINS, Civil and Irrigation Engineer, Surveying and Mapping. Estimates Furnished. 112 San Francisco St., Santa Fe, N. M.

Stenography & Typewriting.

LEW H. BLAKE, Stenography and Typewriting. Notary Public. 135 Palace Avenue, Santa Fe, N. M. Calls promptly answered. Office Phone 76. Residence Phone 151.

NOTARY PUBLIC, STENOGRAPHER AND TYPEWRITER. TRANSLATIONS

From Spanish into English and from English into Spanish carefully made. Office West Side of Plaza. FRANCISCO DELGADO, Santa Fe, N. M.

ARCHITECTS

HOLT & HOLT, Architects and Civil Engineers. Maps and surveys made, buildings and construction work of all kinds planned and superintended. Office, Montoya Building, Plaza, Las Vegas. Phone 94.

THE ENGINEERING AND MINING JOURNAL

NOW IN ITS 29th YEAR. The leading mining periodical of the world, with the strongest editorial staff of any technical publication. Subscription \$3.00 a year (including U. S. Canadian, Mexican postage.) Sample copy free. Send for Book Catalogue. THE ENGINEERING AND MINING JOURNAL 261 Broadway, New York

Maxwell Grant.

FARMING LANDS UNDER IRRIGATION SYSTEM.

These farming lands with perpetual water rights are now being offered for sale in tracts of forty acres and upwards. Price of land with perpetual water rights from \$17 to \$25 per acre, according to location. Payments may be made in ten year installments. Alfalfa, grains, fruits of all kinds, and sugar beets grow to perfection.

GOLD MINES.

On this Grant, about forty miles west of Springer, N. M., are the gold mining districts of Elizabethtown and Baldy. Where important mineral discoveries have lately been made. Claims on unlocated ground may be made under the mining regulations of the company, which are as favorable to the prospector as the U. S. government laws.

Near Raton, N. M., on this grant, are located the Coal Mines of the Raton Coal and Coke Company, where employment may be found at good wages for any wishing to work during the seasons that farming or prospecting can not be successfully done.

For particulars and advertising matter apply to

THE MAXWELL LAND GRANT CO
RATON, NEW MEXICO

Not Luck But Results.

That is why you see our teams so busy supplying the wants of the people with our fine

CERRILLOS COAL MONERO

WHOLESALE AND RETAIL

WE WAGER That there is some difference in wood. Our wood is the best to be had & always at your call. **FIRE WOOD**

Your order will receive prompt and careful attention.

CAPITAL COAL YARD

OFFICE: Garfield Avenue, Near A. T. & S. F. Depot Phone No. 88

THE CLAIRE HOTEL

GEORGE E. ELLIS, Proprietor.

The most conveniently located and only fire-proof and steam-heated Hotel in the city. Electric lights, baths and sanitary plumbing throughout. Everything up to date. First-class Cafe and Buffet spanned. Fine Sample Room for Commercial Men

AMERICAN OR EUROPEAN PLAN.

Postal Telegraph and Cable Co's Office in the Building
CORNER PLAZA AND SAN FRANCISCO STREET.

INCORPORATED

H. B. CARTWRIGHT & BRO., WHOLESALE GROCERS

Grain, Flour and Potatoes Stationery,
Patent Medicines and Grocers' Sundries.

PROMPT ATTENTION GIVEN MAIL ORDERS.

SANTA FE, N. M.

When You Come to Albuquerque Don't Forget

THE ZEIGER CAFE

QUICKEL & BOTHE, Proprietors.

Club Room and Billiard Hall Attached.

Corner Railroad Avenue and Second Street
ALBUQUERQUE NEW MEXICO

CHARLES W. DUDROW, LUMBER - SASH - DOORS

All Kinds of Building Material.

CORD AND STOVE WOOD EXTRA DRY AND CUT TO FIT YOUR STOVE.

CERRILLOS AND HAGAN COAL

Delivered to any part of the City.

TRANSFER AND STORAGE
We Have Everything that is Movable.

One 35 Santa Fe Branch Office and Yards Cerrillos, N. M.

THE CLUB

We handle the Leading Brands of
KENTUCKY BOURBONS
and **PENNSYLVANIA RYES**
Goods bought in bond, purity guaranteed.

**PURE CALIFORNIA WINES, IMPORTED and
DOMESTIC CIGARS and TOBACCOS**

Our Club Rooms are Large, Comfortable and Airy.

AKERS & TOWNSEND, Proprietors.

224 Francisco St. Telephone No. 94

MINES AND MILLS

SIERRA COUNTY.

The placer camp of Shandon last month produced \$1,000 in gold dust. Charles Clark was in Hillsboro last week from Shandon and brought with him several hundred dollars' worth of gold dust from that camp.

SANTA FE COUNTY.

At the Boston Mining Exchange last week 1,370 shares of the Santa Fe Gold and Copper Company were sold at from \$1.50 to \$1.86 per share.

LINCOLN COUNTY.

A meeting of the stockholders of the New Mexico Homestake Reduction Company has been called for October 7th, to meet at Nogal to consider the question of increasing the number of directors of the company from three to five.

THE MINERAL MARKET.

The Engineering and Mining Journal reviews the mineral and metal market of last week as follows:

The iron and steel markets have shown no sensible improvement as a whole, though, at some points, a better demand is reported. The recent cuts in prices of plate and structural steel has led as yet to little buying, and concessions from these prices are reported already. A considerable cut in the prices of steel billets and sheet bars is likely. On the whole, the general outlook for iron and steel manufacturers is improving.

No changes of importance have taken place in the coal market during the week. In the West receipts of bituminous coal have been heavy, and prices show little change, though certain grades are reported stronger. In Alabama the mines that have been closed by the strike are gradually resuming activity. In the Pittsburg district the output is heavy. In the seaboard bituminous trade prices are unchanged, but the market shows improvement.

The anthracite trade continues dull, though an improvement in retail buying is noted at various points, particularly in the West.

From all appearances the metal market shows further strength, and, owing to better inquiry, some prices have advanced slightly. Copper is particularly strong, and quotations are slightly higher than last week. Exports continue heavy, especially to Germany, Austria, and Great Britain. Tin has been very strong, owing partly to speculative buying. Lead is in good request at the regular schedule. In spelter, although consumers appear well supplied, prices have hardened. The foreign market is also firm. Choice zinc ore continues high.

Silver is slightly stronger, and in some directions it is believed that quotations will soon advance. Purchases for the East are moderate, though advances from India intimate that further orders from that section are expected to meet the imports of gold from Australia.

CONCENTRATES.

Every hundred pounds of white lead contains at least seven and one-half gallons of linseed oil.

Chloride of copper, chloride of lead, or silver, of mercury, are known, but gold is not known to exist as a chloride.

Kerosene came into general use about 1850. It was first called coal oil. It was also known as mineral oil and petroleum oil.

All ordinary writing inks owe their properties to the presence of gallate or tannate of iron, held in suspension by means of gum.

The United States produced in tin plate 2,000 tons in 1891. In 1892, 6,092 tons; 1893, 44,563 tons; over 100,000 tons in 1895; in 1900, 302,665 tons, and in 1903 close to 400,000 tons.

Pleochroism is that property of minerals which, in connection with double refraction, exhibits distinct colors when viewed by transmitted light in different directions.

Mexico, in 1903, produced 45,315 tons of copper, and is now the second greatest copper producing country in the world, the United States standing first with an output in 1903 of 298,650 tons.

The Krupp Works, Germany, cover in area 150 acres and the daily output is 1,877 tons. Frederick Alfred Krupp has built for his operatives 5,500 dwellings and maintains a pension fund of \$4,125,000 for their benefit.

Hydrogen is capable of uniting with certain metals, notably palladium, into metal-like compounds. But these hydrogen alloys, being devoid of metallurgical interest, fall better under the heading of palladium.

The first chemical laboratory established in any educational institution in the United States was at Rensselaer Polytechnic Institute, Troy, New York, in 1825, and this was soon followed by the Massachusetts Institute of Technology at Boston.

Johannesburg, the principal city of the Transvaal colony, South Africa, is situated at a distance of 1,015 miles from Cape Town. It has a population exceeding 125,000, half of whom are interested in mining, in one capacity or the other.

Arsenic combines readily with all metals into true arsenides, which latter, in general, are soluble in the metal itself. The presence in a metal of even small proportions of arsenic generally leads to considerable deterioration in mechanical qualities.

In Ireland there are extensive beds of marble. In Kilkenny county and in adjoining counties coal of an anthracite nature is found. Iron ore is found in almost every county and copper of an excellent quality is found in its western hills. Of gold and silver fre-

land produces a few hundred dollars' worth each year, extracted from iron and copper ores.

The famous Liberty Bell was cast in England and was brought from there in 1752. While being taken from the ship it was injured, spoiling its tone, and was recast in Philadelphia in 1753. It was broken in 1835 and has remained in that condition.

Kerosene is the main product of distillation of petroleum, the crude domestic oil yielding up to 70 per cent of its weight in kerosene. The flashing point of a safe kerosene should not be less than 34 degrees and the igniting point 43 degrees.

In large, modern plants, one and one-third to one and two-third-rate engine horsepower is provided per kilowatt of dynamo capacity. The rated boiler horsepower is about 50 per cent of the rated engine horsepower; and storage is provided for 500 to 1,000 pounds of coal per rated boiler horsepower.

DON'T WAIT.

Take Advantage of Santa Fe Citizens Experience Before It's Too Late.

When the back begins to ache. Don't wait until backbone becomes chronic.

Till serious kidney troubles develop. Till urinary troubles destroy night's rest.

Profit by a Santa Fe citizen's experience:

Manuel Montoya of Canon St., says: "Eight months ago and for a year and a half previous to that my back ached continually. If there was any time when a change was noticeable it was during wet and rainy spells when possibly the aching increased. Doan's Kidney Pills procured at Ireland's Pharmacy effectually stopped the aching and what to me is considerable more importance and value, during the last eight months there has not been a sign of a recurrence."

For sale by all dealers; price 50 cents a box. Foster-Milburn Co., Buffalo, N. Y., sole agents for the United States. Remember the name—Doan's—and take no other.

Oysters are now at their prime. Call in and try them at the Bon Ton.

Emergency Medicines.

It is a great convenience to have at hand reliable remedies for use in cases of accident and for slight injuries and ailments. A good liniment and one that is becoming a favorite if not a household necessity is Chamberlain's Pain Balm. By applying it promptly to a cut, bruise or burn it allays the pain and causes the injury to heal in about one-third the time usually required, and as it is an antiseptic it prevents any danger of blood poisoning. When Pain Balm is kept at hand a sprain may be treated before inflammation sets in, which insures a quick recovery. For sale by all druggists.

A Place to Go.

Take your family to the Bon Ton for a change, occasionally. They will enjoy it.

Sour Stomach.

When the quantity of food taken is too large or the quality too rich, sour stomach is likely to follow, and especially so if the digestion has been weakened by constipation. Eat slowly and not too freely of easily digested food. Masticate the food thoroughly. Let five hours elapse between meals, and when you feel a fullness and weight in the region of the stomach after eating, take Chamberlain's Stomach and Liver Tablets and the sour stomach may be avoided. For sale by all druggists.

Notice for Publication.

(Homestead Entry No. 5070.)
DEPARTMENT OF THE INTERIOR,
Land Office at Santa Fe, N. M., Sept. 9, 1904.—Notice is hereby given that the following named settler has filed notice of his intention to make final proof in support of his claim, and that said proof will be made before the Register or Receiver at Santa Fe, N. M., on Oct. 21, 1904, viz: Agapito Cortez for the sec 34, n 1/2 sec 34, w 1/2 sec 34, section 19, township 17 north, range 12 east. He names the following witnesses to prove his continuous residence upon and cultivation of said land, viz: Prudencio Gonzales, Julio Robal, Cresencio Robal, of Willis, N. M. Guadalupe Montano, of Pecos, N. M. MANUEL R. ORZGO, Register.

Fearful Odds Against Him.

Bedridden, alone and destitute. Such in brief was the condition of an old soldier by name of J. J. Havens, Versailles, O. For years he was troubled with kidney disease and neither doctors nor medicines gave him relief. At length he tried Electric Bitters. It put him on his feet in short order and now he testifies: "I'm on the road to complete recovery." Best on earth for liver and kidney troubles and all forms of stomach and bowel complaints. Only 50c. Guaranteed by Fischer Drug Co.

When you go to the Fair at Albuquerque don't fail to take one of those fine oyster loaves with you from the Bon Ton.

When troubled with constipation try Chamberlain's Stomach and Liver Tablets. They are easy to take and produce no griping or other unpleasant effect. For sale by all druggists.

Notice for Publication.

(Homestead Entry No. 5221.)
DEPARTMENT OF THE INTERIOR,
Land Office at Santa Fe, N. M., Aug. 19, 1904.—Notice is hereby given that the following named settler has filed notice of his intention to make final proof in support of his claim, and that said proof will be made before the Register or Receiver at Santa Fe, N. M., on Sept. 27, 1904, viz: Albino Gonzales for the sec 34, n 1/2 sec 34, w 1/2 sec 34, section 18, township 16 north, range 12 east. He names the following witnesses to prove his continuous residence upon and cultivation of said land, viz: Prudencio Gonzales, Julio Robal, Cresencio Robal, of Willis, N. M. Guadalupe Montano, of Pecos, N. M. MANUEL R. ORZGO, Register.



SCIENTIFIC EMBALMING

At Our Up-to-Date

Undertaking Parlors

The Latest Scientific Methods of Embalming are Employed. Calls Answered from the Parlors Day or Night or by DOROTEO SENA, Agent. Our Parlors Consist of a Nicely and Appropriately Fitted Up Suite at No. 10 Lincoln Avenue, West Side Plaza, Santa Fe, New Mexico.

ALL KINDS OF PICTURE FRAMING.

DUDROW & MONTENIE

FINE MONUMENTS TO ORDER.

CORONADO TENT CITY



"RIGHT UP TO NOW"

Go West to the Ocean This Summer
GO TO CORONADO TENT CITY

Coronado Tent City is the wonder of the Pacific Coast. The climate is perfect, the Camp is healthful, the tents are comfortable, and there is plenty to eat. There are a great many other attractions at Coronado, and along the line of the Santa Fe, tickets are on sale Tuesdays, Thursdays and Saturdays, round trip from Santa Fe, \$41.90. For further particulars see Santa Fe agents.

Santa Fe All the Way

REMINGTON TYPEWRITERS

NEW MEXICAN PRINTING CO., Dealers.
Santa Fe New Mexico

HENRY KRICK SOLE AGENT FOR

Lemp's St. Louis Beer.

ALL KINDS OF MINERAL WATERS BY MAIL ORDERS PROMPTLY FILLED
The Trade Supplied From One Bottle to a Carload.
Guadalupe Street, Santa Fe, N. M. Phone No. 38.

HOTEL NORMANDIE

Don Gaspar Avenue and Water Street.

Reasonable rates for board and room.
Good table and service. Well furnished rooms.
New furniture. All windows screened.
Free bath in connection.

CARRIE L. THOMAS, Proprietor.

DO YOU EAT?

If You Do Try the New Cuisine at the

Coronado Cafe

Short Orders a Specialty. All the Delicacies of the Season. Open Day and Night.
Regular Meals 25 Cents. 21 Meals for \$4.50.

* G. LUPE HERRERA, Proprietor *

254 San Francisco Street, Next to Cartwright Davis Co's Store.

H. C. YONTZ MANUFACTURER OF Mexican Filigree Jewelry

DEALER IN

Watches, Clocks, Jewelry and Hand Painted China.

Repairing of fine watches and Jewelry work a specialty.

STANDARD RUSSIAN and INDIAN GOODS * FILIGREE at WHOLESALE and RETAIL
247 San Francisco St.

JACOB WELTMER

BOOKS, STATIONERY, MAGAZINES, PERIODICALS.

Headquarters for

SCHOOL SUPPLIES

Fine Confectionery and Cigars

208 San Francisco St.

Santa Fe, N. M.



THE SUIT YOU'RE LOOKING FOR!

We're positive **IT'S HERE**. We've Suits you can put right on, wear away, and be proud of your appearance. Our Suits look right and are right in every way. Handsome in fabric, stylish in cut, faultless in fit, and withal at a reasonable price. It isn't every store that can match up to these requirements—not "by a long shot." If you by your Fall Suit here, you'll get something.

Out of the Ordinary Rut

We are showing the new Brown Mixtures in Single or Double Breasted styles—narrow collars and lapels—well formed shoulders and handsomely tailored.

Trousers cut correctly. \$17.50 or \$23.50 Suits for the man with a conservative taste or \$25. to \$45. for Suit elegance.

See the Samples Displayed in our Window

SALMON & ABOUSLEMAN

WHOLESALE and RETAIL DRY GOODS.

S. SPITZ

DIAMONDS

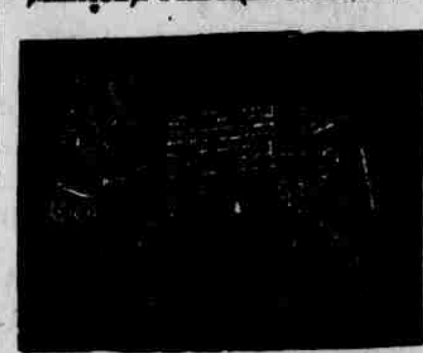
WATCHES, CLOCKS, SILVERWARE, ETC.

ALL KINDS OF DESIGNS IN
Filigree Fob Chains,
Filigree Neck Chains,
Filigree Souvenir Spoons,
Filigree Brooch Pins,
Filigree Bracelets,
Filigree Card Cases,

South Side Plaza - Santa Fe

JEWELRY

Manufacturers of
MEXICAN FILIGREE JEWELRY.



THE NEW MEAT MARKET

256 SAN FRANCISCO STREET, SANTA FE, NEW MEXICO.

We Always Keep a Complete Line of

Fresh Native and Denver Beef,

Pork and Mutton

♦ Fresh Sausage of all Kinds. ♦ Boiled and Smoked Ham. ♦
Breakfast and Salt Bacon, ♦ ♦ ♦ Corn Beef, Pickled Pork.

Pigs Feet and Pickled Tripe
From the Western Packing Company

DENVER, COLO.,

Spring Chickens and Hens Always on Hand.

FRESH KILLED AND DRESSED TO ORDER.

✦ Fine Cooking and Eating Apples. ✦

COLORADO POTATOES.

Orders Delivered Promptly

Yours Respectfully,

E. DORNENBURG,

For First Class
SANITARY PLUMBING

Go to the **W. A. McKenzie** Hardware STORE

All Work will be sure to please you.

PERSONAL MENTION

Mrs. H. O. Bursum left yesterday for Albuquerque for a few days' visit.

Max. Baer, a traveling man from Denver, went to Las Vegas this morning.

W. A. Bayer, of the Santa Fe Central, went to Albuquerque last night on business.

J. H. Overhuls will leave this evening for Albuquerque to remain until after the fair.

Territorial Fish and Game Warden Page B. Otero, was transacting business in Albuquerque today.

Colonel W. S. Hopewell is in Albuquerque on business connected with the Albuquerque Eastern Railway.

Colonel J. Franco Chaves, Superintendent of Public Instruction, was in Albuquerque today on business.

George F. Albright, of Albuquerque, is camping on the waters of the Pecos for a few days on a fishing trip.

C. Olson, of San Pedro, who has been at the sanitarium for the past two weeks, left this morning for his home.

S. L. Biglow, of Denver, who accompanied J. W. Records yesterday to Estancia, returned to the city this morning.

J. A. Scales, representing Chicago meat packing concerns in the Territory, attended to business in the city today.

Governor Otero spent the day in Albuquerque on personal business. He was accompanied by his son, Manuel B. Otero.

J. S. Candelario will leave this evening for Las Vegas to attend the session of the Grand Lodge, Knights of Pythias.

Charles E. Doll, a Denver commercial man and a former resident of this city, looked after business in the Capital City today.

J. A. Garcia, a sheep raiser with headquarters at Conejos, Colorado, arrived from the north last evening on a visit to relatives.

G. L. Erhardt, an Omaha meat salesman, who has been in Santa Fe for the last few days on business, left this morning on a short trip to Taos.

Mrs. John W. Lewis, of Albuquerque, arrived in the city and will spend the next month or six weeks with her parents, Mr. and Mrs. Evaristo Lucero.

Mrs. Charles A. Scheurick left yesterday via the Santa Fe Central and Rock Island Railways for a visit to Kansas City, St. Louis and other points in the east.

James S. Duncan, chairman of the Board of Equalization, left this morning on the Denver & Rio Grande for a few days' trip through the northern counties.

Manuel Sanchez, of Las Trampas, a former member of the legislative assembly from Rio Arriba County, was a visitor in the Capital City today. He was here on private business.

Mr. and Mrs. F. H. Kent, of Albuquerque, have gone east on a visit to the World's Fair at St. Louis. They expect to visit the New England states and Canada before returning.

E. L. Evans, of Los Angeles, is in the Capital City and is completing arrangements whereby he will make Santa Fe his temporary residence for several months to come. He is a guest at the sanitarium.

Ex-Governor L. Bradford Prince returned last night from St. Louis, where he has been for two weeks as a member of the Jury of History, which is to award prizes for the best historical displays at the Exposition.

Miss Barr, who has been visiting the family of J. R. Bean, at Kennedy, left yesterday for a visit to the World's

Fair at St. Louis. After finishing her visit in that city she will come to Santa Fe and make this city her future abode.

The Misses Vena and Myrtle Erhardt, who have been visiting their sisters for the past week at Sunmount Tent City, returned yesterday to the east. Miss Vena will pass the winter at Bloomington and Miss Myrtle at Atwood, Illinois.

Karl B. Pallet, of Cleveland, Ohio, has arrived in Santa Fe and will become a resident of Sunmount Tent City. He is much impressed with the climate and scenes about the ancient city and expects to make an extended stay in this section.

Miss Cora Roble, who has been making this city her residence, returned from a month's outing on the Pecos today. While in the Pecos River section of the Territory Miss Roble made the Valley Ranch her home and reports a pleasant outing. She has apartments in the sanitarium.

Manuel Baca, of Pena Blanca, chairman of the Board of County Commissioners of Sandoval County, was among the visitors to the Capitol today and looked after official business connected with his position. He was also in consultation with officials at Republican headquarters.

Miss A. E. Warner, a tourist from Shelton, Connecticut, stopped over in this city yesterday en route to the Pacific coast. Miss Warner was very enthusiastic about Santa Fe and surrounding country, stating that she had visited many points in the United States but never one more interesting.

Jonkheer C. M. V. Heye van Kroonenburgh, a journalist from Utrecht, Holland, is in Santa Fe securing information for special correspondence. The tourist is corresponding for several European papers during his American trip as well as acting as special correspondent for the Louisiana Purchase Exposition. In speaking of Santa Fe, he said, "This is the most interesting city I have visited in America. I have traveled all over the continent but have failed to find a single place that has so attracted me. Everything combines to make it a pleasure to a man who has an eye for the beautiful of a peculiar type. I should like to remain here longer than my limited time will allow."

MARKET REPORT.

MONEY AND METAL

New York, Sept. 20.—Money on call, firm, 1½ @ 2 per cent. Prime mercantile paper 4 @ 5 per cent. Silver 57½.

New York, September 20.—Lead steady, \$4.25; copper firm, \$12.75 @ \$13.00.

GRAIN.

Chicago, September 20.—Close, Wheat, Sept. 107; Dec. 109½.

Corn, Sept. 52½; Dec. 51½.

Oats, Sept. 31½; Dec. 32½.

PORK, LARD AND RIBS.

Pork, Sept. \$10.30; Oct. \$11.32½.

Lard, Sept. \$7.12½; Oct. \$7.15 @ 7.17½.

Ribs, Sept. \$7.50; Oct. \$7.55.

WOOL MARKET.

St. Louis, Mo., September 20.—Wool, is steady.

Territory and western medium, 21 @ 22 fine medium, 16 @ 19; fine, 16 @ 17.

STOCK MARKETS.

New York, Sept. 20.—Atchafson 80½; pld., 88; New York Central, 125½; Pennsylvania, 129½; Southern Pacific, 55½; Union Pacific, 98½; pld., 91½; U. S. Steel, 16½; pld., 66½.

LIVE STOCK.

Kansas City, Mo., Sept. 20.—Cattle market steady to 10c lower.

Native steers, \$3.75 @ \$6.25; Southern steers, \$2.50 @ \$5.00; Southern cows, \$1.75 @ \$2.85; native cows and heifers, \$1.50 @ \$4.75; Stockers and feeders, \$2.25 @ \$4.00; bulls, \$1.75 @ \$3.25; calves, \$2.50 @ \$5.50; western steers, \$3.00 @ \$4.25; western cows, \$1.50 @ \$3.25.

Sheep market 5 to 10c lower.

Muttons, \$3.25 @ \$3.90; lambs, \$4.00

ANOTHER OPPORTUNITY IN OUR BUSINESS CAREER TO PLEASE ALL

Never Equalled Before in Santa Fe

SPECIAL SUMMER CLEARING SALE

Every Article A GREAT BARGAIN

We must sell our stock of SUMMER GOODS in order to make room for our NEW FALL AND WINTER STOCK hence

DON'T MISS THIS CHANCE

Every article is Stylish, Well-Made and Up-to-Date
Call and ask to see them.

SELIGMAN BROS. CO.

THE LOWEST PRICED HOUSE IN THE CITY FOR FINE GOODS!

TELEPHONE 36

P. O. BOX 219

@ \$5.30; Range wethers, \$3.25 @ \$3.80; Ewes, \$2.75 @ \$3.35.

Chicago, September 20.—Cattle market slow to steady.

Good to prime steers, \$5.60 @ \$6.15; poor to medium, \$3.50 @ \$5.25; stockers and feeders, \$2.25 @ \$3.85; cows \$1.50 @ \$4.50; heifers, \$3.00 @ \$4.85; canners, \$1.50 @ \$2.25; bulls, \$2.00 @ \$4.15; calves, \$3.00 @ \$6.25; Texas fed steers, \$4.00 @ \$5.00; western steers, \$3.00 @ \$4.00.

Sheep market slow.

Good to choice wethers, \$3.80 @ \$4.25; fair to choice mixed, \$3.35 @ \$3.75; western sheep, \$3.00 @ \$4.00; native lambs, \$4.00 @ \$6.00; western lambs, \$4.00 @ \$5.40.

Reduced rates from all points all the time to Cloudercft. "Ask the ticket agent."

For the Colorado and New Mexico Fair, at Durango, Colo., Sept. 28th, 29th and 30th, the Denver & Rio Grande will sell round trip tickets from Santa Fe for \$13.15, final return limit Oct. 3d. For further information apply to B. W. Robbins, Traveling Freight and Passenger Agent, Santa Fe, N. M.

Miss. A. Mugler.

Keeps full line of Wash Embroidery Silks, Battenberg Braids, Thread, etc., etc.

Wool for Knitting and Crocheting Shawls and various pretty Articles.

INFANTS and CHILD'S WOOLEN VESTS.

BABY BONNETS & IN FACT BEST & MOST DESIRABLE LINE OF MILLINERY

ALWAYS TO BE FOUND THERE

Call and see for Yourself.

→ SOUTH EAST-CORNER PLAZA ←

The El Paso, Northeastern is the "Cloudercft Line."

Wherever inflammation exists, there you may use with perfect safety



MITCHELL'S EYE SALVE

although the Salve is chiefly recommended for diseases of the eye.

CURES ALL EYE AFFECTIONS.

San Francisco St.

Telephone 26.

H. S. Kaune & Co.
GROCERS

Headquarters For
SANTA FE GROWN FRUIT

Try a Jar of
BISHOP'S GRAPE FRUIT OR ORANGEATE

POULTRY EVERY WEDNESDAY AND FRIDAY

VEGETABLES DAILY

PRIMROSE BUTTER
The purest and best Butter made, from the Cleanest Creamery in the world. Sealed in air-tight, odor-proof packages . . . **PRIMROSE!**

BOSS PATENT and CRYSTAL PATENT Flour

BOSS PATENT : : : \$1.60 for 50 lb. Sack
CRYSTAL PATENT : : : \$1.55 for 50 lb. Sack

THE OLD CURIO STORE J. S. CANDELARIO 301 San Francisco St.

Wholesale and Retail Dealer In

Indian and Mexican Curios

Our stock is the largest in the city and we are adding goods every day.
We Guarantee satisfaction or refund your money.
After you have visited other stores and obtained prices, call on us and get our prices.

We are here to stay. We are not closing out stock, but increasing it every day. This is the oldest established native curio store in Santa Fe. We like the business and you will always find us at the OLD STAND ready to please you.

The best place to buy Indian and Mexican Blankets, Pottery and Curios, also Relics from the Cliff Dwellings. Beautiful Mexican Drawn Work, Box 346

If it is in the drug market and you want it you can procure it at
IRELAND'S PHARMACY

MINOR CITY TOPICS

Today quite a heavy snow fell in the Valles mountains, west of Santa Fe.

Wanted—A girl to do general housework. Apply at the New Mexican office.

Attention is directed to change in the advertisement of J. S. Candelario of the "Old Curio Store". He has something to say that should not be overlooked.

The Miners' hospital at Raton is rapidly nearing completion. It contains twenty-nine rooms and in point of architecture is about the finest building in New Mexico.—Raton Range.

A very satisfactory rain of two hours duration fell yesterday afternoon in Santa Fe Canon, a few miles east of town and helped the water in the reservoir of the Santa Fe Water & Light Company considerably.

The advance men for Sells & Downs Circus arrived in the city today and are registered at the Bon Ton. The city is being plastered with the usual circus bills announcing the coming of the well known entertainers.

Henry Pacheco, justice of the peace of precinct 14, who has been very ill for the past three months and upon whom two operations were performed by Dr. Popplewell, is recovering rapidly and will be about the first of the month.

The selection of Attorney J. P. Victory to be city attorney, vice A. B. Renahan, resigned, meets with general approval. Mr. Victory is a valuable citizen and is doing much towards the building up and progress of this city.

The Albuquerque Eastern will begin work on the construction of this road this week. Yesterday cars loaded with plows, scrapers and camping outfits left for Kennedy and Moriarty. Work will begin with about 100 men and 40 teams.

The new Santa Fe time table will go into effect in a short time. By this new schedule connection will be made with No. 1 at Lamy Junction also retaining connection with No. 7. The California flyer will be in service again early in November.

The Woman's Aid Society of the First Presbyterian Church will give a social at the home of Mr. and Mrs. Charles L. Bishop on Thursday evening of this week. Refreshments will be served and every person will be charged a penny for each letter in his or her name.

Marshall Gorman has thirty-five men working on the streets in the four wards cleaning up the accumulated rubbish. Most of those at work are paying their poll taxes by this method. Ten are employed in the First Ward, eight in the Second, nine in the Third and eight in the Fourth.

The dog situation is greatly improved during the present month and the number of stray, worthless and unlicensed dogs have been materially reduced by the carrying out of the dog ordinance by the city marshal and his assistants. The present state of affairs meets the approval of all citizens.

A. J. Bishop, cashier at the Santa Fe depot, received a telegram this morning announcing that his wife who is visiting relatives at Lanesville, Iowa, is very low and in a very serious condition. Mr. Bishop left this morning for the Iowa town to be at his wife's bedside as soon as possible.

The penitentiary authorities now have thirty-three convicts at work on the Santa Fe end of the scenic route road and twenty-four on the Las Vegas end. Very satisfactory progress is being made and the construction work is as durable and solid as it can be made by the most skilled and competent workmen.

E. C. Burke, clerk at Republican Headquarters, who was taken to the sanitarium a few days ago to submit to an operation on his chest, is said to be convalescent and will be able to attend to his duties in a few days. Mr. Burke was operated upon yesterday and it is thought that the dangerous period has now passed.

Superintendent H. O. Bursum of the Territorial penitentiary, thinks that he will have a lot of paving brick and blocks ready for sale on Saturday of this week or Monday of the coming week. The city authorities and property owners who are required by law to put down sidewalks and crossings should not be slow in purchasing brick for these purposes.

Generally fair tonight and tomorrow, with showers in the extreme southern portion, is the forecast issued by the U. S. Weather Bureau today. Yesterday the thermometer registered as follows: Maximum temperature at 12:30 p. m., 77 degrees. Minimum temperature at 5:20 p. m., 55 degrees. The mean temperature for the twenty-four hours was 66 degrees. The relative humidity was thirty per cent. The maximum velocity of the wind was 36 miles per hour, from the southeast.

At 6 a. m. today the thermometer registered 52 degrees.

Affairs are rather quiet at Democratic Headquarters in the absence of J. H. Crist, the territorial chairman. Mr. Crist was supposed to be in Taos yesterday and is expected to return tonight or tomorrow. It is said that Mr. Crist has arranged several Democratic meetings during his absence from Santa Fe although his aides at headquarters state that the trip has been one purely on personal business.

H. S. Lutz, the efficient Santa Fe Railway agent in this city was kept close to work today and will be a good deal of his time at the depot as his assistant cashier, A. J. Bishop, was compelled to leave this morning for Iowa to visit his wife who is very sick. The multifarious duties of agent as well as of cashier and assistant are now devolving upon Mr. Lutz and this fact does not give him any time to look after the city end of the company's business.

Vice-President Pendleton, of the Bureau of Immigration, has been at the World's Fair for a week in the interest of the Bureau of Immigration distributing literature, published by the Bureau, and doing other work of benefit to the Territory. He took to the New Mexico exhibit a fine collection of San Juan County fruits, cereals and vegetables which was installed with the New Mexico Agricultural exhibit. Judge Pendleton will start on his return trip to Aztec tomorrow, expecting to reach his home about the 25th inst.

Bids for the construction of a stone bridge across the Santa Fe River on College Street will be opened at the court house on Thursday, the 29th. Instant. Contractors and bridge builders should take notice. The bridge will be a very valuable and greatly needed improvement and its construction is due to the untiring efforts of County Commissioner Arthur Seligman, who pushed the matter with might and main. Property owners are willing to pay increased taxes for such improvements as these and the town and county cannot have too many of them.

Territorial Secretary J. W. Reynolds, who has just returned from a visit to Leonard Wood County states that the grass on the ranges there is in very satisfactory condition and that sheep are doing very well. The Salado Live Stock Company, of which he is secretary, has a large number of men in the field cutting hay and stacking it for winter and spring use. The average yield of this grammar hay on the prairies is from one-half to three-fourths of a ton per acre and it is of the best quality. The outlook for stock in that section for the winter, he considers is good.

Things are moving lively at Republican headquarters. Huge letter signs announcing the location of the headquarters are now prepared and were strung this afternoon. W. P. Clark, one of the clerks, is a busy man. The details of opening up the headquarters are to a great extent upon Mr. Clark's shoulders but he retains his cheerful smile and has a genial word for every man who calls to see how things are progressing. Many letters are being sent out. Secretary Safford is gradually getting in touch with every Republican of prominence in the Territory. Pictures of Roosevelt, Fairbanks and Senator Andrews are beginning to appear and soon the campaign will be in full swing. The outside office is now being rapidly fitted up, chairs and tables being placed for the accommodation of the workers.

The Bon Ton is the oldest established hotel in the city and under its able management endeavors to be up-to-date in every detail.



DO YOU WANT TO SAVE \$15?

You'll do it, if you buy a Colonist ticket to California from me between now and October 15. Tickets will cost more later on. Fast trains. Pullman Sleepers daily. Excursions under personal escort three times a week. Liberal stopovers.

I'd like to tell you about this.

H. S. LUTZ,
Ticket Agent.

Major S. K. Hooper, General Passenger and Ticket Agent of the Denver & Rio Grande, has authorized very low rates to Santa Fe from all stations on the D. & R. G. between Durango and Santa Fe for the New Mexico Territorial Fair at Albuquerque, N. M., Oct. 10th to 15th. For information regarding these rates apply to agents or B. W. Robbins, Traveling Freight and Passenger Agent, Santa Fe, N. M.

OFFICIAL MATTERS

Additional Delegate Appointed.
Governor Otero has appointed Dr. Francis T. B. Fest, of Las Vegas, as an additional delegate from New Mexico to the American International Tuberculosis Convention, which meets in St. Louis, October 3, 4 and 5.

Final Homestead Entry.
The following final homestead entry has been made in the United States land office:

3402. Juliana A. de Moya, widow of Juan Ysidro Moya, Wagon Mound, SE 1-4 SE 1-4 Section 19, and N 1-2 NE 1-4 Section 30, T 19 N, R 24 E, 160 acres in Mora County.

Delegates to Irrigation Congress.
Mayor Gibson, in a call for the New Mexico Irrigation Congress, which will be held in Albuquerque during the Territorial Fair, next month, has appointed the following persons as delegates from the city of Santa Fe: L. B. Prince, C. F. Easley, T. B. Catron, Amado Chaves, Antonio Ortiz, J. H. Sloan, Simon Nusbaum, Frank Owen and Jose Segura.

Homestead Entries.
The following homestead entries have been made in the United States land office:

3086. Enrique Sabedro, NE 1-4 SE 1-4 Section 9, T 2 N, R 12 E, 160 acres in Valencia County.

3081. Jose de Jesus Lucero Martinez, S 1-2 SE 1-4 Section 30, W 1-2 SW 1-4 Section 29, T 24 N, R 16 E, 160 acres in Colfax County.

Final Desert Land Proof.
The following final proof of a desert land claim has been made in the U. S. land office:

90. Sim Calley, Black Lake, S 1-2 NW 1-4 NE 1-4 NW 1-4 Section 9, SE 1-4 SW 1-4 Section 4, T 23 N, R 22 E, 160 acres in Colfax County.

3082. David P. McKeller, Wagon Mound, S 1-2 NW 1-4 Section 19, R 21 E, S 1-2 NE 1-4 Section 24, R 20 E, T 23 N, 160 acres in Mora County.

3083. Perferio Alcon, Wagon Mound, Lot 1, Section 30, Lot 1 and E 1-2 SW 1-4 Section 19, T 19 N, R 24 E, 159.57 acres in Mora County.

3087. Tibusio Labato, Sena, SE 1-4 S W 1-4 Section 28, E 1-2 NW 1-4, NW 1-4 NE 1-4 Section 33, T 12 N, R 12 E, 160 acres in San Miguel County.

Public Funds Received.
The following public funds have been received by Territorial Treasurer J. H. Vaughn:

H. O. Bursum, superintendent of Territorial penitentiary, convict's earnings, \$247.90.

H. B. Cartwright, treasurer and collector of Santa Fe County, taxes for 1902, \$20.48; taxes for 1903, \$188.82.

Eugenio Romero, treasurer and collector of San Miguel County, taxes for 1902, \$168.08; taxes for 1903, \$565.68.

Romualdo Roybal, treasurer and collector of Mora County, taxes for 1903, \$150.41.

Manuel Baca, treasurer and collector of Sandoval County, taxes for 1903, \$202.14.

Leopold Sanchez, treasurer and collector of Leonard Wood County, taxes for 1903, \$1,215.20.

George J. Pace, treasurer and collector of Colfax County, taxes for 1903, \$337.19.

W. J. Horney, treasurer and collector of Roosevelt County, taxes for 1903, \$675.71.

Jose M. Gonzales, treasurer and collector of Union County, taxes for 1902, \$12.74; taxes for 1903, \$826.75.

Mark Howell, treasurer and collector of Chaves County, taxes for 1903, \$241.82.

J. D. Walker, treasurer and collector of Eddy County, taxes for 1903, \$496.34.

I. N. Jackson, treasurer and collector of Otero County, taxes for 1902, \$10.72; taxes for 1903, \$460.70.

William C. Barnes, Secretary of Cattle Sanitary Board, \$2,000.00.

The New Mexican Printing Company will do your job work with neatness and dispatch.

SANTA FE ROUET TIME TABLE

EFFECTIVE JUNE 1st, 1904.

No. 722 leaves Santa Fe 10:10 a. m. to connect with No. 2, east bound, with connection from El Paso and southern California. Returning, arrive at Santa Fe 12:01 p. m.

No. 727 leaves Santa Fe at 7:25 p. m., to connect with No. 7, makes connection for passengers going east on No. 8 and also brings passengers and mail from No. 1 west bound—No. 7 makes all local stops between Lamy and Albuquerque, returning arrives at Santa Fe at 9:25 p. m.

All Santa Fe trains run through solid from Chicago to California and carry free chair cars, tourist and Pullman sleepers.

Through sleeping car reservation arranged for on application.

H. S. LUTZ,
Agent, Santa Fe, N. M.
City ticket office, Catron block, east side Plaza.

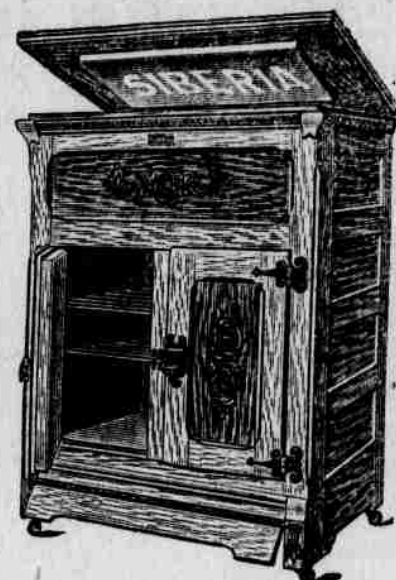
The New Mexican prints the news.

FURNITURE AND HOUSE FURNISHINGS

Refrigerators, Ice Cream Freezers at Your Own Prices, To Close Out.

Attractive Offerings in Furniture! New Goods. New Prices. Cash or Installments.

Santa Fe Hardware Supply Co.



Guns and Ammunition—Best Made.

Fresh Flowers all the Time! Fresh Fruits in Season!

FRUITS AND FLOWERS

The Clarendon Garden

San Miguel Street, Near the Old Church, Santa Fe, N. M.

CUT FLOWERS A SPECIALTY

WEDDING BOUQUETS

DECORATIONS

FLORAL DESIGNS

Telephone No. 12

P. O. Box 457

Santa Fe Central Rail'y

TIME TABLE
Effective Sunday, September 11, 1904.

South Bound		North Bound	
No. 1	Mi.	Stations.	Alt. No. 2
8:15 a	0	Leaves Santa Fe	7,000 3.00 p
8:35 a	8	"Donnellana"	6,650 4.40 p
9:00 a	16	"Vega Blanca"	6,400 4.15 p
9:25 a	22	"Kennedy"	6,050 3.50 p
9:45 a	28	"Clark"	6,125 3.30 p
10:25 a	41	"Stanley"	6,370 2.55 p
11:00 a	52	"Moriarty"	6,250 3.20 p
11:25 a	61	"Melancholia"	6,175 1.55 p
12:50 p	69	"Estancia"	6,140 12.50 p
1:25 p	81	"Willard"	6,125 12.20 p
1:55 p	92	"Progresso"	6,210 11.30 a
2:35 p	98	"Blanca"	6,235 11.30 a
3:20 p	116	Arr. Torrance	6,475 10.45 a

Connecting at Santa Fe, N. M., with the Denver & Rio Grande R. R. for all points in Colorado, Utah, Idaho, Montana, Washington and the Great Northwest.

Connecting at Torrance, N. M., with the El Paso-Northeastern System for Kansas City, Chicago, St. Louis and all points east and for El Paso, Texas and all points in Southern New Mexico, Arizona and the Republic of Mexico.

Connecting at Kennedy, N. M., for points east and west on the Atchafalaya, Topeka & Santa Fe Railway.

For rates and information address

A. B. GRIMSHAW,

General Passenger Agent,

Santa Fe, N. M.

D. & R. G. SYSTEM, Santa Fe Branch. TIME TABLE.

EAST BOUND		WEST BOUND	
No. 425	Miles	No. 426	Miles
5:20 p m	Ar. Santa Fe	9:00 a m	Ar. Santa Fe
6:40 a m	Ar. Salida	1:10 p m	Ar. Salida
6:50 a m	Ar. Pueblo	6:50 a m	Ar. Pueblo
2:20 p m	Ar. Denver	2:45 a m	Ar. Denver
8:30 p m	Ar. Denver	7:50 a m	Ar. Denver

Trains stop at Embudo for dinner where good meals are served.

CONNECTIONS.

At Antonito for Durango, Silverton and intermediate points.

At Alamosa for Denver, Pueblo and intermediate points via either the standard gauge line via La Veta Pass or the narrow gauge via Salida, making the entire trip in day light and passing through the FAMOUS ROYAL GORGE, also for all points on Creede branch.

At Salida for all points west. At Denver, Pueblo and Colorado Springs for all points east.

For further information, sleeping car reservations time cards, literature, etc., call on or address.

F. H. McBRIDE, Agent.

Santa Fe, N. M.

S. K. HOOPER, G. P. A.

Denver, Colo.

Is this Your Wife?



You say: "No!" But she should remind you of a duty you owe your wife. If she has one of the old-fashioned, troublesome, cumbersome, cast-iron Cook Stoves—the kind that gets red hot all over—you can end all her kitchen troubles by buying her a "Quick Meal" Range.

The "Quick Meal" Steel Range is so thickly lined with asbestos that all the heat is kept inside the Range to bake and cook the meals, instead of cooking the Cook. In that way it saves fuel and it also saves and sweetens temper.

"Quick Meal" Ranges are daily growing in popularity. They look well, they cook well, they bake well, they last well. That is why there are so many in use—every one recommends another.

We have just received a car load of

New Furniture

And will be pleased to show you through our establishment.

Goods sold on easy payments

DAVID S. LOWITZKI

Everything usually carried in a first-class and up to date drug establishment may be found at

IRELAND'S PHARMACY

USE THE SHORT LINE

In connection with the
ROCK ISLAND SYSTEM
TO VISIT THE HOME FOLKS.

Rate One Fare Plus \$2.00 for the Round Trip. Tickets on sale September 6th, 13th, 20th, 27th and October 11th. Limited for return thirty days from date of sale. A Stop-over of Ten days allowed at St. Louis to visit the World's Fair.

Rates apply to all points in Indiana, to Sandusky, Columbus, Washington Court House, Wilmington, Cincinnati and points West thereof in Ohio, to Louisville, Hawesville, Powers, Lewisport and Owensboro, Kentucky.

You always get the lowest rates, quickest time shortest lines and best meals via this route.

Ask your nearest ticket agent or call on or address:

T. H. HEALY, Passenger Agent, El Paso, Texas. **A. N. BROWN, G. P. A.**

THE CHAS. WAGNER FURNITURE CO.

WE LEAD IN EVERYTHING.

Chinaware, Glassware, Picture Frames and Moldings Stoves and Ranges
Furnaces Made to Order Goods Sold on Easy Payments



CHARLES WAGNER

"Licensed Embalmer."

Telephone 10. San Francisco Street.
Night Calls Answered from residence—Telephone No. 1.

NEW MEXICO MILITARY INSTITUTE

ROSWELL, NEW MEXICO.

THE MILITARY SCHOOL OF NEW MEXICO

Established and Supported by the Territory.

SIX MEN INSTRUCTORS, all graduates of Standard Eastern Colleges. New buildings, all furnishings and equipments modern and complete; steam-heated, gas-lighted, baths, water-works, all conveniences. **TUITION, BOARD and LAUNDRY**, \$300 per session. Session is three terms of thirteen weeks each.

ROSWELL is a noted health resort, 3,700 feet above sea-level; well-watered.

REGENTS—Nathan Jaffa, W. M. Reed, R. S. Hamilton, J. C. Lea and E. A. Cahoon

For particulars address

COL. J. W. WILLSON, Supt.

OJO CALIENTE HOT SPRINGS.

These Celebrated Hot Springs are located in the midst of the Ancient Cliff Dwellers, twenty-five miles west of Taos, and fifty miles north of Santa Fe, and about twelve miles from Baranca Station, on the Denver and Rio Grande Railway, from which point a daily line of stages runs to the Springs. The temperature of these waters is from 90 to 122 degrees. The gases are carbonic. Altitude, 6,000 feet. Climate very dry and delightful the year round. There is now a commodious hotel for the convenience of invalids and tourists. These waters contain 1,686.24 grains of alkaline salts to the gallon, being the richest alkaline Hot Springs in the world. The efficacy of these waters has been thoroughly tested by the miraculous cures attested to in the following diseases: Paralysis, Malaria, Bright's Disease of the Kidneys, Rheumatism, Neuralgia, Consumption, Syphilis and Mercurial Affections, Scrofula, Catarrh, La Grippe, all Female Complaints, etc., etc. Board lodging and bathing \$2.50 per day; \$14 per week; \$50 per month. Stage meets Denver trains and waits for Santa Fe train upon request. This resort is attractive at all seasons, and is open all winter. Passengers for Ojo Caliente can leave Santa Fe at 9 a. m., and reach Ojo Caliente at 4 p. m. the same day. Fare for round trip from Santa Fe to Ojo Caliente, \$7.40. For further particulars, address

ANTONIO JOSEPH, Proprietor

Ojo Caliente, Taos County, N. M.

Legal blanks of all kinds for sale at The New Mexican office.

Clean Cars with Good Ventilation

You will find no other kind in Burlington trains. Cleanliness is a hobby with the Burlington and particular people are cordially invited to make inspection whenever they have opportunity.

In summer, cleanliness and good air mean much to the traveler. He wants both. He deserves both. And he gets both.

Let me tell you about the low rates we are offering now to Chicago, St. Louis and other points East.



Ticket Office, 1039 17th St.

J. F. VALLERY, General Agent, DENVER

GRANT COUNTY NEEDS RAIN

Water in Ponds is Drying Up and Creeks Are Very Low at the Present.

GALA DAY AT SILVER CITY

The Spanish Speaking People Celebrated the Independence Day of the Neighboring Republic.

Special correspondence of New Mexican.

Silver City, N. M., Sept. 20.—Saturday this city was in gala attire, being given over to the native population to celebrate the independence of Mexico from foreign rule. In the morning there was a parade of floats and carriages all handsomely decorated with the national colors of the United States and Mexico. The exercises in the afternoon consisted of singing the Mexican national hymn by thirty young girls, all dressed in white with sashes of the national colors of Mexico, headed by one young woman dressed as the American Goddess of Liberty, in a beautifully decorated pavilion erected for the occasion. Speeches were made by several prominent members of the Alianza Hispano-Americana Lodge of this city, after which sports, such as climbing the greased pole and catching the greased pig were indulged in. In the evening, a grand free ball was given at Newcomb Hall, which was packed to the doors and the entire program was carried out without a hitch. Splendid order was maintained throughout the day and great credit reflects upon the committee having the ceremonies in charge.

Eugene Warren, the Republican nominee for the legislature from the 13th District, has begun an active campaign for his election.

The Republican County Convention will be held about October 20th and the Democratic convention about the same time.

The nomination of Senator Andrews was received very favorably in this community and Grant County will give him a big vote.

Slas Alexander is a visitor in the city and is here on business connected with the session of the District Court.

Mayor A. S. Goodell returned on Sunday from San Francisco, having attended the Knights Templar conclave in that city. He reports a pleasant trip.

Mrs. O. S. Warren and her daughter, Mrs. Moorman, have gone to St. Louis for a few weeks visit at the World's Fair.

C. V. Reib, of the Silver City Beer & Ice Company, and Edward Appleton, left yesterday for an extended visit to the World's Fair.

Gordon Davidson has gone to Los Angeles, California, to resume his studies at a college in that city.

Politics will begin to liven up about the first of October.

Grant County is badly in need of rain as water in the ponds and creeks is getting very low.

Cough Remedy

I have sold Chamberlain's Cough Remedy for more than twenty years and it has given entire satisfaction. I have sold a pile of it and can recommend it highly.—Joseph McElhiney, Linton, Iowa. You will find this remedy a good friend when troubled with a cough or cold. It always affords quick relief and is pleasant to take. For sale by all druggists.

Notice for Publication.

(Homestead Entry No. 3312.)

DEPARTMENT OF THE INTERIOR.

Land Office at Santa Fe, N. M., Sept. 6, 1904.—Notices hereby given that the following named settler has filed notice of his intention to make a final proof in support of his claim, and that said proof will be made before the register or receiver at Santa Fe, N. M., on Oct. 19th, 1904, viz: Rinaldo Sandobal for the 1/2 sec. 1/4 sec. 27, township 14 north, range 9 east. He names the following witnesses to prove his continuous residence upon and cultivation of said land, viz: Demetrio Quintana, Carlos Sanchez, Juan Madrid, Juan Ortega all of Galisteo, N. M.

NOTICE.

Advertisement for bids for the construction of a stone building on College Street in the City of Santa Fe.

Sealed bids will be received by the Board of County Commissioners of the County of Santa Fe until 10 o'clock a. m. on the 29th day of September, 1904, for the construction of a bridge on College Street, in the city of Santa Fe, across the Santa Fe River, in accordance with plans and specifications now on file in the office of the clerk of the Board of County Commissioners of the county of Santa Fe. The said Board hereby reserves the right to reject any and all bids.

Witness the seal of the Board of County Commissioners of the county of Santa Fe, and Territory of New Mexico, and the hand of its Chairman and Clerk, this 9th day of September, A. D. 1904.

[SEAL] **ARTHUR SELIGMAN**, Chairman Pro Tem. of Board of County Commissioners.

Attest: **CELSO LOPEZ**, Clerk.

Headquarters for wedding cards and announcements—New Mexican Printing Company.

**Economy Brand Evaporated Cream**

goes farthest, because it is most concentrated; is most nourishing, because it is richest in cream; most perfect, because most skillfully prepared. Its purity is guaranteed under forfeit of \$5,000 to anyone able to prove any adulteration in our product.

A BOY'S WILD RIDE FOR LIFE.

With family around expecting him to die, and a son riding for life, 18 miles, to get Dr. King's New Discovery for Consumption, Coughs and Colds, W. H. Brown, of Leesville, Ind., endured death's agonies from asthma; but this wonderful medicine gave instant relief and soon cured him. He writes: "I now sleep soundly every night." Like marvelous cures of consumption, pneumonia, bronchitis, coughs, colds and grip prove its matchless merits for all throat and lung troubles. Guaranteed bottles 50c. and 1.00. Trial bottles free at Fischer Drug Company, Santa Fe.

HOME VISITORS EXCURSIONS.

Home Visitors' excursion tickets will be sold to Indiana, Ohio, and Kentucky via the Santa Fe at one fare plus \$2.00 for the round trip, dates of sale September 6th, 13th, 20th, 27th, and October 11th, return limit, 30 days from date of sale.

H. S. LUTZ,
Santa Fe, N. M.

Notice for Publication.

(Homestead Entry No. 7010.)

DEPARTMENT OF THE INTERIOR.

Land Office at Santa Fe, N. M., Aug. 27, 1904.—Notice is hereby given that the following named settler has filed notice of his intention to make final proof in support of his claim, and that said proof will be made before the register or receiver at Santa Fe, N. M., on October 11, 1904, viz: Harvey M. Shields for the 1/2 sec. 1/4 sec. 19, township 19 north, range 3 east. He names the following witnesses to prove his continuous residence upon and cultivation of said land, viz: Hugh Murray, Leonard Winhofer, James A. Smith, J. M. Shields all of Perea, N. M.

Manuel R. Otero, Register.

PROPOSALS FOR BUILDING MATERIALS. U. S. Indian School, Santa Fe, New Mexico, September 12, 1904. Sealed proposals, endorsed "Proposals for building materials, etc.", and addressed to the undersigned at Santa Fe, New Mexico, will be received at the Indian School until 2:30 o'clock P. M. of October 6, 1904, for furnishing and delivering where required, as needed during the fiscal year ending June 30, 1905, about 30,000 feet of lumber, 22,000 lath, 40,000 shingles, 50 doors and windows 20 corner blocks, 75,000 brick, 200 bu. lime, 5 bundles hair, 13 squares tin roofing, 26 stone stills, besides a quantity of locks, sash pulleys, cords and weights, spouting, etc., as per list and specifications obtainable at the school. Bidders are requested to state specifically the price of each article to be offered under contract, all articles to be offered to be subject to rigid inspection. The right is reserved to reject any and all bids, or any part of any bid, if deemed for the best interest of the service. Each bid must be accompanied by a certified check or draft upon some United States depository, or solvent national bank, made payable to the United States in case a bidder receiving an award shall fail to execute promptly a satisfactory contract in accordance with his bid; otherwise to be returned to the bidder. Bids accompanied by cash in lieu of certified check will not be considered. For further information, apply to Clinton J. Crandall, Superintendent.

The New Mexican Printing Company will do your job work with neatness and dispatch.

TO THE CLIFF DWELLINGS.

Five hours for the round trip. Experienced drivers. Low rates and good teams.

GEORGE J. SAFFORD & SON,
Española, N. M.

OPERA HOUSE

A. M. DETTELBACH, Mgr.

The Largest Hall in the City for

Balls
Parties
Private and Public Entertainments
Conventions, Etc., Etc., Etc.

Seating Capacity, 450

Large Stage

For terms apply to

A. M. Dettelbach,

101 Hancock St. Santa Fe, N. M.

WANTS**AND MISCELLANEOUS ADS**

Wanted—Position as cook, or general housework. Thoroughly competent. Apply New Mexican.

FOR SALE—Fine sheep ranch. If interested, call on or address Andrew Forbes, Saguache, Colo.

WANTED—Clean cotton rags, New Mexican office. Cash paid for same.

HANNA INSURANCE AGENCY, Writes Fire, Life and Accident Insurance. Phone 66. Offices Griffin Block.

FOR RENT—Furnished double house of 3 rooms each. Apply to Santa Fe Meat and Live Stock Co.

FOR RENT—Two new six-room cottages, stationary range, bath and toilet. Apply to Geo. E. Ellis, Claire Hotel.

FOR RENT—Elks' Hall, formerly Adam's Hall for balls, parties and all other public and private use. Apply to George E. Ellis, trustee.

FOR RENT—Elegantly furnished rooms. Also, rooms for light house-keeping, furnished, good well water, good surroundings. Inquire 114 Cerillos Street, South Side.

WANTED—For the U. S. army: able bodied, unmarried men, between ages of 21 and 35; citizens of United States of good character and temperate habits, who can speak, read and write, English. For information apply to recruiting officer, 250 San Francisco Street, Santa Fe, New Mexico.

Roosevelt or Parker. No matter which will be elected, you can rest assured that you can satisfy your appetite at the Bon Ton.

BUCKLEN'S ARNICA SALVE.

Has world-wide fame for marvelous cures. It surpasses any other salve, lotion, ointment or balm for cuts, corns, burns, boils, sores, fclons, ulcers, tetter, salt rheum, fever sores, chapped hands, skin eruptions; infallible for piles. Cure guaranteed. Only 25c at Fischer Drug Company, Santa Fe.

Low Excursion Rates.

For Campbell Brothers' Circus, September 16th, the Santa Fe Central Railway will sell tickets from all points on its line to Santa Fe.

S. B. GRIMSHAW.

What is Life?

In the last analysis nobody knows, but we do know that it is under strict law. Abuse that law even slightly, pain results. Irregular living means derangement of the organs, resulting in constipation, headache or liver trouble. Dr. King's New Life Pills quickly readjust this. It's gentle, yet thorough. Only 25c. at Fischer Drug Co., Santa Fe

STORY & CLARK**Pianos!**

Read What Accomplished Musicians Say of the Story and Clark Piano.

"Equal if not superior to any instrument I have had occasion to use."—Barron Berthold.

"Shows such superiority of workmanship and finish as must make them welcome to any household."—Leonora Jackson.

"Grand resona in tone and delightfully sweet and tender."—Mathilda Bauermeister.

"I cannot speak too highly of your pianos, they seem to be unsurpassable."—R. Watkins Mills.

"I find your pianos wonderfully sympathetic for accompanying the voice."—Lillian Blauvelt Pendleton.

"Gave the liveliest satisfaction to me. I consider them second to none."—David Frangcon Davies.

"I think it capable of the fullest expression of musical thought."—Ellen deach Yaw.

"In my opinion they rank among the very best pianos of the day."—Emile Sauret.

"Possessed of a beautiful quality of tone and a most sympathetic touch."—Fernando de Lucia.

"I was perfectly charmed with its beauty of tone and delightful touch."—Francis Hiten.

"Their tone is sweet as well as resonant. Are remarkably adapted for accompanying the voice."—Clementine de Vere Sapiro.

"Your pianos embody sweetness and richness of tone, splendid carrying power and excellent action."—Rosa Olitzka.

THE STORY & CLARK PIANO CO.

Employ only expert workmen and no piece work or contract work is done in their factories.

They have won renown on two continents for excellence and beauty of their instruments.

Prices and terms most liberal.

Call on the General Agent for New Mexico,

FRANK DIBERT

Santa Fe, N. M.

Who will show you the Story and Clark Pianos in the several styles and finish—Mahogany, Hungarian, Walnut and Golden Oak.

1904 September: 1904

Sun	Mon	Tues	Wed	Thur	Fri	Sat
				1	2	3
4	5	6	7	8	9	10
11	12	13	14	15	16	17
18	19	20	21	22	23	24
25	26	27	28	29	30	

INFORMATION BUREAU OF THE WORLD'S FAIR.

A St. Louis World's fair information bureau has been established at 836 Seventeenth street, Denver, in charge of Phil P. Hitchcock, where information will be cheerfully furnished.

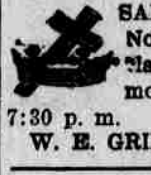
It will pay you to advertise. Try it.

SOCIETIES.**Masonic.**

MONTEZUMA LODGE No. 1, A. F. and A. M.—Regular communication first Monday in each month at Masonic Hall at 7:30 p. m. **S. SPITZ, W. M.**



SANTA FE CHAPTER No. 1, R. A. M.—Regular convocation second Monday in each month at Masonic Hall at 7:30 p. m. **W. E. GRIFFIN, H. P.**



SANTA FE COMMANDERY No. 1, K. T.—Regular convave fourth Monday in each month at Masonic Hall at 7:30 p. m. **W. R. PRICE, E. C.**

W. E. GRIFFIN, Recorder.

K. O. P.

SANTA FE LODGE NO. 2, KNIGHTS OF PYTHIAS—Regular meeting every Tuesday evening at 8 o'clock Castle Hall, corner of Don Gaspar Avenue and Water Street. Visiting Knights given a cordial welcome. **JOHN L. ZIMMERMANN, C. C.**

JOHN K. STAUFFER, K. R. S.
R. H. BOWLER, Master of Finance

I. O. O. F.

SANTA FE LODGE NO. 2, I. O. O. F. Meets every Friday evening in Odd Fellows Hall, San Francisco street. Visiting brothers welcome. **GEORGE W. KNAEBEL, N. G.**

A. P. HOGLE, Secretary.

B. P. O. ELKS.

SANTA FE LODGE No. 460, B. P. O. E. Holds its regular session on the second and fourth Wednesdays of each month. Visiting brothers are invited and welcome.

A. L. MORRISON, JR., E. R.

A. J. FISCHER, Secretary.

IMPROVED ORDER RED MEN.

Santa Fe Tribe No. 5, I. O. R. M. meets every Thursday eve at Odd Fellows hall at 8 o'clock. Visiting chiefs cordially invited.

C. L. BISHOP, Sachem.

A. P. HOGLE, Chief of Records.

SANTA FE LODGE NO. 259, FRATERNAL UNION OF AMERICA—Regular meetings first and third Mondays in each month at 8 o'clock p. m. Knights Pythias Hall, Don Gaspar Avenue. Visiting brothers welcome. **J. S. CANDELARIO,**

P. J. MARTIN, Fraternal Master.

Secretary, H. S. LUTZ,

Treasurer.

All legal blanks at the New Mexican.

Santa Fe Filigree and

Jewelry Manufacturing Co.

Gold & Silver Filigree

N. Mondragon, Mgr.

(Laughlin Building, Don Gaspar Avenue.)

MUTUAL BUILDING & LOAN ASSOCIATION

Will assist you to

Own Your Own Home!

Be your own landlord. Pay your rent into the Building & Loan Association and thus pay for your home.

The Association has on hand money to loan on desirable property.

For particulars call on or address the secretary.

R. J. CRICHTON,

GRIFFIN BLOCK, SANTA FE, N. M.

Woman's Nature

Is to love children, and no home can be completely happy without them, yet the ordeal through which the expectant mother must pass usually is so full of suffering, danger and fear that she looks forward to the critical hour with apprehension and dread.

Mother's Friend

Mother's Friend, by its penetrating and soothing properties, allays nausea, nervousness, and all unpleasant feelings, and so prepares the system for the ordeal that she passes through the event safely and with but little suffering, as numbers have testified and said, "It is worth its weight in gold." \$1.00 per bottle of druggists. Book containing valuable information mailed free.

THE BRADFIELD REGULATOR CO., Atlanta, Ga.

Santa Fe Central Railway System.

Use the Short Line in connection with the E. P. & N. E. and Great Rock Island route. Rates for the World's Fair, at St. Louis, \$43.55, for

THE NEW LINK



CONNECTING ALL THE GREAT RAILWAY SYSTEMS OF NEW MEXICO

the round trip. Tickets on sale September 19, 20, 28 and 30, October 3d, 4th, 5th, 6th, 10th, 20th, 28th and 31st. Limited for return for ninety days from date of sale. In no event will the final return limit of these tickets in any case exceed December 31st, 1904. Santa Fe Central trains make close connection at Torrance. All E. P. & N. E. & R. I. trains carry Pullman sleepers, tourist and dining cars. Service unsurpassed. All trains of this route run into the grounds so passengers on this line have no change of cars but are taken directly to the gates of the Exposition.

Tickets also on sale to KANSAS CITY, CHICAGO, and all points east. Lowest rates, quickest time, shortest lines, and best service via this route.

For any additional information call on or address S. B. Grimshaw General Passenger Agent, Santa Fe, New Mexico.

W. H. ANDREWS, Pres. & Gen'l Manager. S. B. GRIMSHAW, G. F. & P. A.

If you want to buy anything, if you want to sell anything, if you want to rent a house, if you want your house rented, or if you lose anything, advertise in the NEW MEXICAN.

Wabash Route

ST. LOUIS CHICAGO DETROIT BUFFALO



NIAGARA FALLS NEW YORK BOSTON

AND ALL EASTERN CITIES

The Shortest and Only Line Running Over the Great Rock Island from Kansas City to St. Louis to Niagara Falls and Buffalo. With All Modern Conveniences.

Time and Service Unexcelled Three Solid Fast Through Trains Daily

Stop-over allowed on all tickets via Niagara Falls. Meals served in the comfortable Wabash Palace Dining Cars. For further information inquire of nearest Wabash Agents or address: RICH. H. WATSON, General Agent, Passenger Department, ST. LOUIS, MISSOURI.

THE DENVER & RIO GRANDE SYSTEM

Denver & Rio Grande, Rio Grande Western, Rio Grande & Santa Fe and Rio Grande Southern Railroads.

THE POPULAR LINE TO Colorado Springs, Pueblo, Cripple Creek, Leadville, Glenwood Springs, Aspen, Grand Junction, Salt Lake City, Ogden, Butte, Helena, San Francisco, Los Angeles, Portland, Tacoma, and Seattle. Also reaches all the principal towns and mining camps in Colorado, Utah and New Mexico.

THE TOURIST'S FAVORITE ROUTE

To all Mountain Resorts. The Only Line Passing Through Salt Lake City Enroute to the Pacific Coast

THROUGH SLEEPING CARS

BETWEEN DENVER AND

ALAMOSA	SALT LAKE CITY
CRIPPLE CREEK	OGDEN
LEADVILLE	PORTLAND
GLENWOOD SPRINGS	SAN FRANCISCO
GRAND JUNCTION	LOS ANGELES

DINING CARS SERVICE A LA CARTON ALL THROUGH TRAINS

REMARKABLE COINCIDENCE

It Goes to Prove That Politics and Religion Can Go Well Together.

It is said that politics and religion do not mix, but it seems to be a remarkable coincidence that almost at the same time that Senator Andrews, president of the Santa Fe Central Railway, should be receiving the nomination for delegate to congress, there should be a movement on foot for the establishment of churches along the entire line of that road.

Rev. A. M. Harkness organized a Methodist church at Estancia last Sunday, on Monday he went to Torrance to meet a brother minister and while there held a service, and there being no suitable place in which to hold the service, the train crew offered the use of a passenger coach, which was found to be a very comfortable place and about twenty-five gathered to hear the sermon, which was preached by Rev. Ehlers, of Santa Rosa.

On Thursday of this week, Rev. Harkness will preach at the Hagan coal fields, and it has been proposed by Dr. Morrison, superintendent of the Methodist Episcopal church for New Mexico, to place a minister in this field for next year who will give his entire time to the preaching of the gospel. This speaks well for the management of the railway and also for the Territory.

HOTEL ARRIVALS.

Palace: Charles E. Doll, Denver; J. H. Daniel, Las Vegas; O. H. Hettinger, Kansas City; J. A. Garcia, Conejos, Colorado; J. A. Seales, J. W. Tobin, A. A. Kean, Albuquerque.

Claire: Miss A. E. Warner, Shelton, Connecticut; K. B. Pallet, Cleveland; W. H. Frost, Chicago; E. L. Evans, Los Angeles; J. H. Edans, Jersey City; Arthur Romero, Moriarty; S. L. Bigelow, Denver.

Bon Ton: Lawrence W. Pope, Jackson, Tennessee; Jesus Roybal, Pecos; Juan M. Lopez, G. Manzanarez, Louis Trujillo, Conejos, Colorado; Mr. and Mrs. J. E. Kirk, Miss T. W. Kirk, J. P. Hill, Tres Piedras; Juan Trujillo, Belen.

Normandie: Walter Kisthard, Kansas City; Mr. and Mrs. J. Randall Grimes, Chicago; Charles E. Gunes, Denver; J. K. Trimble, Los Angeles.

NOT AN OFFENSIVE OR IMPROPER FEATURE IN THE WHOLE SHOW.

The Sells & Downs Circus, which comes to Santa Fe next Monday, September 26th, is a show of the highest class and clean in every respect. It represents all that there is of legitimate worth in the circus business. It is in charge of men who aspire to elevate the tone and purify the atmosphere of the calling, and we believe the thousands who have attended the performances up to the highest professional and artistic standard, the menagerie, large and varied, and the trained animals of the best, but there is not in connection with the Sells & Downs Show a single one of those discreditable and demoralizing features which have done so much to give the circus a bad name, and to discourage the true friends of that otherwise wholesome form of amusement. The managers of the Sells & Downs Show keep all their promises, advertising nothing they do not expect to give, and carefully divest their performances of anything and everything calculated to offend the most fastidious. We are sure that the verdict of the citizens will be more favorable. Remember the date, Monday, September 26th.

Administrator's Notice.

To whom it may concern: Please take notice that I have this day been appointed administratrix, etc., of the estate of R. M. Carley, lately a resident of the county of Santa Fe, deceased, and was so appointed by the Probate Court in and for said county and have duly qualified as such and letters of administration have been duly issued to meon said estate, and all persons having just claims against said estate are hereby notified to present the same to me at my residence in Golden, N. M., for allowance within the year prescribed by law, and all persons indebted to said estate are required to pay such indebtedness to me without delay.

Dated Santa Fe, N. M., Sept. 19th A. D., 1904. LIBRADITA MONTANO DE CARLEY, Administratrix, etc.

A FREE RAILROAD RIDE FOR YOU.

The Earth is a new illustrated monthly journal, describing the Great Southwest. Its publishers generously offer nearly \$5,000 worth of free railroad rides for the best photos of southwestern scenes, and the best letters about that region written by residents thereof.

Why don't you enter this friendly contest? Write today to The Earth, 1118 Railway Exchange, Chicago, and learn full particulars.

NEW MEXICO TERRITORIAL FAIR.

Albuquerque, N. M. Oct. 10th-15th, 1904. For this occasion the Santa Fe will sell tickets to Albuquerque and return from all points between Denver and El Paso Texas. The rate from Santa Fe will be \$2.65 for the round trip, dates of sale October 9th to 14th inclusive, good for return limit until Oct. 17th, 1904. H. S. Lutz, Agent.

\$390 FOR LETTERS ABOUT THE SOUTHWEST.

The Rock Island system offers 20 prizes, of the aggregate value of \$390, for letters relative to the territory along its lines in Arkansas, Kansas, Indian Territory, Oklahoma, Texas and New Mexico. Letters should deal with the writer's experiences since he settled in the southwest. They should tell how much money he had when he arrived, what he did when he first came, what measure of success has since rewarded his efforts and what he thinks of that portion of the country in which he is located. Letters should not be less than 300 nor more than 1,500 words in length and will be used for the purpose of advertising the southwest.

Letters are desired not only from farmers and farmers' wives, but also from merchants, school teachers, clergymen; from everyone, in brief, who has a story to tell and who knows how to tell it.

For circular giving details, write John Sebastian, passenger traffic manager, Rock Island system, Chicago, Illinois.

JUSTICE OF THE PEACE DOCKETS.

The New Mexican Printing Company has prepared civil and criminal dockets especially for the use of justices of the peace. They are especially ruled, with printed headings, in either Spanish or English, made of good record paper, strongly and durably bound with leather back and covers and canvas sides; have a full index in front and the fees of justices of the peace and constables printed in full on the first page. The pages are 10 1/2x16 inches. These books are made up in civil and criminal dockets, separate, of 320 pages each or with both civil and criminal bound in one book, 80 pages civil and 320 pages criminal. To introduce them they are offered at the following low prices:

Civil or criminal.....\$4.00
Combination civil and criminal \$6.00

For 45 cents additional for a single docket or 65 cents additional for a combination docket, they will be sent by mail or prepaid express. Cash in full must accompany order. State plainly whether English or Spanish printed heading is wanted. Address

NEW MEXICAN PRINTING CO., Santa Fe, New Mexico.

GENTRY BROTHERS' FAMOUS SHOWS UNITED.

The consolidating of Gentry Brothers' Famous Trained Animal Shows, which have long been the most popular tented exhibitions in the world, makes an important union of excellent performances by combining what have heretofore traveled separately. The exhibition is fully twice its former size; in addition to the augmented professional displays, the performance this season requires double the space and time that it formerly did. The famous Shows united will exhibit in Santa Fe, south of the Palace Hotel, Thursday, October 6th.

Circuses are coming, and there'll be something doing, But don't forget that at the Bon Ton you'll find the best of chewing.

Keep your business ever before the public by advertising in your home paper. A good advertiser always has success in any honest enterprise.

EL PASO ROUTE

Texas & Pacific Railway



"No trouble to answer questions"

TAKE THE NIGHT EXPRESS FAST TRAIN

NEW TRAIN SCHEDULE NEW EQUIPMENT

Leaves El Paso Daily at 6:50 p.m. Mountain Time.

This handsome solid vestibuled train runs through to New Orleans, Shreveport and St. Louis without change. Carries through sleepers Los Angeles to Chicago and intermediate points. Direct connections made for all points North, East and Southeast. For schedules, rates and other information call on or address,

R. W. CURTIS

Southwestern Passenger Agent EL PASO, TEXAS

L. G. LEONARD
Traveling Passenger Agent
EL PASO, TEXAS

E. P. TURNER
Gen. Passenger and Ticket Agent
DALLAS, TEXAS

LOOK AT THE CLOUDS FROM THE TOP

And so see the Silver Lining. You can do it from OUR TRAINS. We go above them in places.

Mexican Central Railway

With Its Two Thousand Miles of Track Reaches All the Principal Places of Interest and Note.

Address the undersigned for full and reliable information.

W. D. MURDOCK, A. G. P. A., City of Mexico.

A. DULOHERY, Commercial Agent, El Paso, Texas.

REMINGTON TYPEWRITERS

NEW MEXICAN PRINTING CO., Dealers.

Santa Fe New Mexico

St. Louis

AND BACK

OVER



Going via the Santa Fe you are landed DIRECTLY IN FRONT OF THE MAIN ENTRANCE To the "World's Fair."

\$43.55

Limit 90 Days
On Sale
Sept., 19, 20, 28, 29.

Oct., 3, 4, 5, 6, 19, 20, 26, 27.

\$40.70

On Sale Daily
LIMIT
15 Days.

COACH TICKETS

\$25.75

LIMIT
10 Days.

Chicago and return \$45.55, one way via St. LOUIS, on sale daily, return limit October 31st.

Full Particulars Santa Fe Ticket Offices

H. S. LUTZ Agent

CARTWRIGHT-DAVIS CO.

GEO. W. HICKOX, President S. G. CARTWRIGHT, Sec'y and Treas.

No. 250 San Francisco Street.

Grocery Telephone No. 4. Meat Market Telephone No. 40.

GREELEY POTATOES.

The potatoes from Greeley, Colorado rank as being of the very highest quality. We are now receiving them, and they are very fine indeed.

Per cwt \$1.65

MEADOW GOLD BUTTER.

We never tire of telling the good qualities of Meadow Gold Butter. It is pure, clean and of a most delicate flavor. These good qualities are retained and preserved by the package, which is air tight, moisture and odor proof.

OUR BAKERY.

Why not use our bread? It is made according to the most approved methods. It contains nothing that could by the remotest possibility be injurious to the health. It is sweet to the taste, clean to the sight and always fresh. Made only from the highest grade Kansas flour.

MEAT MARKET.

Only the choicest cuts of packing house corn fed beef, mutton and lamb are cut in our market. Give us a trial when you want something nice in the way of meats, bacon, hams, boiled ham, etc.

IMPERIAL FLOUR.

Our trade on Imperial Flour has been very satisfactory, but we would like every one in Santa Fe to use it who can appreciate its remarkable qualities. It makes the best of bread and is also a fine pastry flour. Probably the best pastry cook in the Southwest will use no other brand.

50 pound sack \$1.60

SOUTH SEA BLEND.

There has been a remarkable advance in the price of medium grade coffees. We are still selling South Sea Blend at 25 Cents per pound. We fear that we shall not be able to continue to do this much longer. Better buy sixty days' supply now.

FRUITS AND VEGETABLES.

We always have what the market affords in the way of fruits and vegetables.

HAY AND GRAIN.

We shall be pleased to fill your orders for hay, grain, feed, etc. Our stocks are always complete, the quality of the best and prices reasonable. See that your animals are well fed. We can do it for you.

SPECIAL MEETING CITY COUNCIL

J. P. Victory Was Appointed City Attorney, Vice A. B. Renahan Resigned.

The city council held a special meeting last night to again consider ways and means of opening up Galisteo Street to Palace Avenue. Mayor A. R. Gibson called the meeting to order at 7:30 o'clock at the office of Francisco Delgado, city clerk. Those aldermen present were George Anton, Celso Lopez, Marcelino Garcia, A. P. Hogle, H. S. Kaune and Teodoro Castillo.

The first business to come before the council was the resignation of A. B. Renahan as city attorney. Mr. Renahan stated in his resignation that as there had been insinuations that owing to his clientage he was unable to deal justly by the city, that he would resign rather than be open to such suspicion, though even unjust and unfair.

The council then went into executive session for a few moments and Mayor Gibson recommended the appointment of J. P. Victory, a well known Santa Fe attorney, to fill the position rendered vacant by Mr. Renahan's resignation. The council immediately acted upon the mayor's recommendation, electing Mr. Victory unanimously to that position.

How to continue Galisteo Street to Palace Avenue was a subject which brought out endless discussion without any result. The continuation is from San Francisco Street to Palace Avenue, the proposed street passing through property belonging to Luis M. Ortiz, J. S. Candelario and Dr. W. S. Harroun. Mr. Ortiz owns the frontage on San Francisco Avenue through which the city engineer has planned to carry the street.

At a previous meeting of the council a committee of two, consisting of Celso Lopez and George Anton, had been appointed to see Mr. Ortiz and endeavor to secure the privilege of opening the street. This committee submitted the following report:

"Your committee, appointed at the last meeting of the City Council, for the purpose of conferring with Luis M. Ortiz in regard to the acquisition of land from him for the opening of a street to extend Bridge or Galisteo Street to Palace Avenue, beg leave to report that they have had such conference with Mr. Ortiz, with the result that he states that said street as contemplated is injurious to his property and that it would only benefit Mr. J. S. Candelario, and he would object to its being opened in that manner. That he is willing to give one-half the land and that Mr. Candelario give also the other half, provided that he is paid a reasonable price for the amount of land so taken."

On motion, the report of the committee was accepted and ordered filed.

Mr. Ortiz was present in person and addressed the council in a few words, stating that he could not consider the proposition of giving the city 25 feet as it would ruin his property. He said that it was possible that he could sell 12 1/2 feet at a reasonable price, provided Mr. Candelario would dispose of a like amount. He told how he had given a large amount of property in the past to the city but that in this instance circumstances would not warrant his entertaining any plan to give the city a full street through his property. Several aldermen were in favor of laying the matter indefinitely on the table, stating that the city had no money with which to buy property and that it was evident the street could not be opened. On motion, however, Aldermen Ortiz and Anton were re-appointed a committee to see at what price they could obtain the land from Mr. Candelario and Mr. Ortiz.

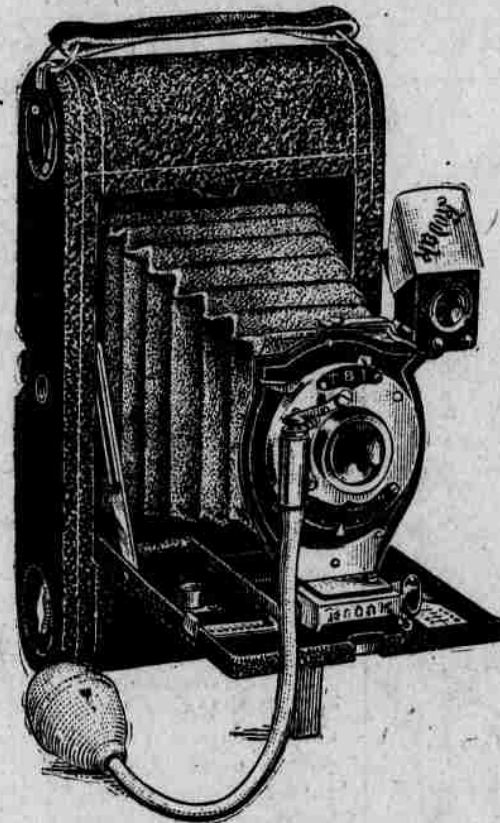
City Attorney Renahan, in making his final report, called attention to the fact that many who had been found guilty in the police court were appealing to the District Court, the fines remaining unpaid because the city did not advance money with which to pay the docket fees. He pointed out that this was an easy way for defendants from the city courts to escape punishment and stated that there were seven such cases at the present time before the District Court. The council decided that the city must be protected and ordered a warrant drawn for \$36.50 to pay the docket fees of those cases appealed. It will be necessary for appellants in the future to either pay their fines or fight the case. Many have used the higher court as a simple method of avoiding paying fines, the city treasury not warranting any further expenditure on the cases. Mr. Renahan also reported that he had collected \$5 in settlement of the case of the City vs. Hilario Trujillo, which had been appealed to the higher court.

Francisco Delgado presented his oath of office and was sworn in as city clerk, the same being ordered regularly filed. The council also decided to accept Mr. Delgado's offer of his office as a meeting place in the future at the same rental as was previously paid in the court house.

Alderman Celso Lopez stated to the council that Mrs. Martin Quintana was willing to give the city her land at the end of Hancock Street if the city in return would cancel her back taxes. The land in question would give a clear street to the Union Depot and would be of material benefit to the city. Mr. Lopez was appointed a committee of one to investigate the amount of the accumulated taxes and to receive Mrs. Quintana's proposition in full and re-

Going to the Fair?Take a **KODAK** With You

SEE OUR WINDOW DISPLAY

All Styles and Prices, from \$1 to \$35
ALL KINDS OF SUPPLIES

No. 3 A. Folding Pocket Kodak, \$20.00.

FISCHER DRUG CO.

230 San Francisco Street : Santa Fe, N. M.

**Exceedingly Popular
PRICES ARE PREVAILING AT
John Koury's
NEW CASH STORE****BEAUTIFUL WHITE CHINA SILK WAISTS,**

Daintily made, lace-trimmed. Just the thing to wear with the new style separate skirts!

See the new stock of **COLLARS**, silk and linen, handsomely embroidered. Look over the display at our Store before you decide on your purchase : : :

We carry the finest **SHOES** in the country, made by the largest and best house in America, that's the Brown Shoe Co. Men's, Ladies', Boys', Girls' and Children's.

* **PRICES TO SUIT ANYBODY** *
COME AND SEE US * **GIVE US A TRIAL**

Catron Block, East Side Plaza.

A. F. SPIEGELBERG

257 San Francisco Street.

**Indian and Mexican
Wares and Curios**

Blankets, Baskets, Pottery, Rag, Wax, Feather and Linen
Drawn Work, Opals, Turquoise, Garnets
and Other Gems.

SPECIALTY

To have the best of everything in the line.

A Long Distance Rifle

Stranger—"Can you shoot very far with that ancient-looking rifle you have?"

Native—"Shoot far? Why, half the time we have to put pepper and salt in the load to keep the game from spilling till we can get to it."

Guns, Pistols, Ammunition, Etc.

W. H. GOEBEL
The Hardware Dealer

CATRON BLOCK, NO. 311. SANTA FE, N. M.

port at the next regular meeting of the city council.

On motion, the council adjourned to meet again at the next regular meeting.

PERFECT BLISS.

"Name your three wishes," said the good fairy.

And the individual addressed did not hesitate a moment.

"Fairy," said he, "make me a millionaire, with the appetite of an elephant and digestion to match and let me board at the Bon Ton."

U. S. WEATHER BUREAU NOTES.

Forecast for New Mexico: Generally fair tonight and Wednesday, except showers in extreme south portion.

Yesterday the thermometer registered as follows: Maximum temperature, 77 degrees, at 12:30 p. m.; minimum, 55 degrees, at 5:30 a. m. The mean temperature for the 24 hours was 68 degrees. Relative humidity, 30 per cent. Maximum velocity of wind 36 miles per hour from the southwest.

Temperature at 6:00 a. m. today, 52 degrees.

**ANNUAL CONVENTION.
GRAND LODGE KNIGHTS OF PYTHIAS OF NEW MEXICO.**

Las Vegas, Sept. 21st, 1904.

For this occasion the Santa Fe will sell tickets to Las Vegas and return from all points in New Mexico, Trinidad and El Paso at one and one-fifth fare for the round trip, from Santa Fe, \$4.05.

H. S. LUTZ, Agent.
Santa Fe, N. M.

Keep your business ever before the public by advertising in your home paper. A good advertiser always has success in any honest enterprise.

A. B. CRAYCRAFT,**PHOTOGRAPHER**

Makes this suggestion to you.

Come and see me if you want the finest

PHOTOS AND VIEWS

Ever made in the city

MY SPECIALTY IS TO PLEASE YOU!

Developing and Finishing
Kodak Work to Order :**Plaza Studio****ST. MICHAEL'S COLLEGE**

Santa Fe, New Mexico.



THE 46TH YEAR BEGINS SEP. 1, 1904.

The College is empowered by law to issue FIRST-CLASS TEACHERS' CERTIFICATES to its Graduates, which Certificates are to be honored by School Directors in the Territory of New Mexico.

BROTHER BOTULPH, President.

Tablets for School Children, 10-cents per Pound. New Mexican Printing Co.

GOLD'S OLD CURIOSITY SHOP

**CLOSING
OUT
SALE!**

Wishing to retire from business I will sell my entire stock of
**INDIAN and MEXICAN BLANKETS, POTTERY,
BASKETS, DRAWN WORK, CURIOS, ETC.**

At less than Cost.

TOURISTS:

Do you know that you miss half of Santa Fe if you do not visit our Curio Store & Free Museum.

Sign of the Old Cart

Send for Catalogue

Cor. San Francisco Street and Burro Alley.