

9-3-1904

Santa Fe New Mexican, 09-03-1904

New Mexican Printing Company

Follow this and additional works at: https://digitalrepository.unm.edu/sfnm_news

Recommended Citation

New Mexican Printing Company. "Santa Fe New Mexican, 09-03-1904." (1904). https://digitalrepository.unm.edu/sfnm_news/2054

This Newspaper is brought to you for free and open access by the New Mexico Historical Newspapers at UNM Digital Repository. It has been accepted for inclusion in Santa Fe New Mexican, 1883-1913 by an authorized administrator of UNM Digital Repository. For more information, please contact disc@unm.edu.

LIAO YANG ABANDONED

General Stakelberg's Corps is
Cut Off by the Victorious
Enemy

JAPS ARE RELENTLESS

Continue Assaults Upon Kuropatkin's
Main Army With Telling
Effects.

Tokio, Sept. 3.—The Japanese
have occupied Liao Yang.
St. Petersburg, Sept. 3.—It is
officially announced that General
Kuropatkin is retreating, that
Liao Yang has been abandoned
and that General Stakelberg's
corps has been cut off.

The exact position of the two armies
that oppose each other at Liao Yang
on this fifth day of the great battle,
is still somewhat vague by both press
dispatches and official reports. Both
St. Petersburg and Tokio advise, how-
ever, make it clear that Kuropatkin
did not remove his entire army to the
north bank of the Taitse River, and it
is evident that portions of both of the
armies are now engaged today on
either side of the river. While Russian
official advice given out at St. Peters-
burg still maintain that Kuropatkin
has executed a successful strategic
move and that a retrograde movement
does not indicate a reverse, the tone
of the Tokio reports is confident in the
extreme and a dispatch from Marshal
Oyama alludes to the "defeated Rus-
sians" as making a last stand outside
of the walls of Liao Yang. Kuropat-
kin is also engaged with Kuroki north
of the river and there are rumors that
a strong Japanese force has executed
another flank movement by crossing
higher up and to the west of the Rus-
sian positions.

Russians Assume the Offensive.

St. Petersburg, Sept. 3.—A bulletin
issued this afternoon announces that
Kuropatkin has assumed the offensive
and is massing his artillery, which
bombed the Japanese up to Friday
noon, preparatory to an attack upon
General Kuroki's flanking army on
the north side of the Taitse River.

Retreat Across Taitse River.

Tokio, Sept. 3.—Field Marshal Oyama
reports as follows: "September 3,
9 a. m., Remnant of the routed Russian
army is still offering a slight resistance
outside of Liao Yang. Our center and
left armies are attacking it. An earli-
er message from Field Marshal Oyama
says: The enemy in front of our left
and center armies continued to re-
treat on September 2d to the right
bank of the Taitse River, except those
portions of his forces which are occu-
pying the defensive works from the
south to the northwest of Liao Yang,
and the heights northeast of Nutchang.
Our armies are continuing the attack.
Our right army occupied on morning
of September 2d that part of heights
situated west of Hei Ying Tai.

Kuropatkin's retreat, if the com-
mander-in-chief is retreating, is consid-
ered possible here. It may be due
to the appearance of another flanking
movement of the Japanese higher up
and from the west. Reports that Jap-
anese were moving up the Liao River
towards Sin Min Tin were persistent
just before fighting began.

Forced to Leave Artillery.

Mukden, Sept. 3.—After six days of
fighting, the Japanese last Wednesday
abandoned a direct attack upon Liao
Yang in favor of a flank movement of
the Russians and were compelled to
abandon a number of guns, being un-
able to reach them through the mud.
A number of Japanese prisoners were
taken who were in a dreadful state
of exhaustion. Many had been without
food for two days, during which a
downpour of rain had filled the trench-
es. Their shoes are in tatters.

Are in Full Retreat.

St. Petersburg, Sept. 3.—A report
reached St. Petersburg today that Ku-
ropatkin is in full retreat. The war
office admits such a rumor has come
from the west of war, but declares it
is not official.

Strategy Regarding Retreat.

St. Petersburg, Sept. 3.—A new
phase of the battle of Liao Yang has
now begun. The main operations have
been transferred to the north bank of
the Taitse River, where General Ku-
ropatkin has assumed the offensive, fur-
ling his army against Field Marshal
Oyama's right under Kuroki and at the
same time holding the Japanese center
and left on the other side of the river
in check with a force on the south
bank. The operations on the south
side are now considered secondary and
Kuropatkin's strategy is regarded as
brilliant. The Russian army left on
the Liao Yang side of the Taitse River
is regarded as strong enough behind
the fortified positions to hold General's

A RODEY DELEGATION.

Republicans of Bernalillo County Hold
Harmonious Convention
Today.

Special to the New Mexican.
Albuquerque, Sept. 3.—The Republi-
cans of Bernalillo County at their con-
vention in this city today selected a
Rodey delegation. The gathering was
very harmonious, there being no con-
tests. No resolutions on statehood
were passed, this being left to the Ter-
ritorial Convention.

WILL NOT INTERFERE.

President Gompers, of American Fed-
eration, Does Not Favor Sympa-
thetic Strikes.

Chicago, Ills., Sept. 3.—President
Gompers, of the American Federation
of Labor, has refused to call a meet-
ing of the national executive council
to recommend a general sympathetic
action of unionists in support of the
packing house strike.

Oku and Nodzu long enough to give
Kuropatkin a chance to strike Kuroki
and at the same time protect the brid-
ges. Telegraphic and railroad commu-
nication between the Russian army
and Mukden was still open this morn-
ing.

Slowly Losing Ground.

Tokio, Sept. 3.—The Russian force,
confronting Field Marshal Oyama's
left and center, continues slowly to
give ground in retreat and is crossing
to the right bank of the Taitse River.
A portion of the Russian army now oc-
cupies a line of defense works extend-
ing northwest from a point south of
Liao Yang. The Russians also hold
the eminence northeast of Nutchang,
on the right bank of the Taitse River.
This is evidently intended to shield
the general retreat of both the left and
center of the Russian army. The Jap-
anese armies continued to press the
Russians yesterday. Kuroki, after
serious fighting, succeeded yesterday in
taking a portion of the eminence near
Heiying Tam. Details of this fighting
have not been received. The Russians
appear to be concentrating in the vicin-
ity of Yen Tai coal mines, twelve
miles northeast of Liao Yang. Possibly
another great battle will occur there.
The present trend of movements in-
dicates a possible movement of the Jap-
anese past Liao Yang, temporarily
leaving the city unchanged.

Japanese Held in Check.

St. Petersburg, Sept. 3.—Kuropatkin,
telegraphing under today's date, de-
scribes the change of front resulting
from the advance of Kuroki as a flank-
ing movement and says that the Rus-
sians advanced against Kuroki yester-
day. He also adds that the Japanese
on the same day attacked the Russian
right but were repulsed.

Situation is Not Alarming.

Berlin, Sept. 3.—The foreign office
has official advices from Tokio that
Kuropatkin's position today is by no
means desperate. The main portion
of his army is still engaged and a part
was drawn off successfully. The Rus-
sian army is not encircled.

General Staff in Suspense.

St. Petersburg, Sept. 3.—Notwith-
standing the lack of official confirma-
tion of Kuropatkin's retreat, the re-
port has fallen like cold douche upon
the general staff. The emperor, who
was going to Libau today, has post-
poned the trip on account of the situ-
ation at the front. A higher officer
of the general staff said to a corres-
pondent of the Associated Press after
the receipt of the unofficial report,
that Kuropatkin was falling back and
that if it was true he did not believe
the commander-in-chief could afford
to abandon his stores at Liao Yang,
and in his opinion the army corps
would be left there to protect them.
He adds: "Liao Yang, if besieged,
might then become the Ladysmith of
the Japanese-Russian war."

Now Held Commanding Position.

A report from General Kuroki's
headquarters, dated September 2d,
says: "For the past two days the army
under Kuroki has pushed to the north-
west, towards the railroad north of
Liao Yang. His right wing has taken
the last line of the intervening hills
and he holds the commanding position,
from which to strike the railroad.
Fighting lately has been continuous
and heavy, and there has been much
artillery fire. Last night the Japanese
carried a strongly fortified Russian po-
sition north of the Taitse River and
west of Awang Tuan by a bayonet
charge. In this fight the Japanese loss
was small."

U. S. WEATHER BUREAU NOTES.

Forecast for New Mexico: Partly
cloudy with local thunder showers to-
night and Sunday; warmer Sunday;
cooler in south portion tonight.
Yesterday the thermometer registered
as follows: Maximum temperature, 75
degrees, at 1:30 p. m.; minimum, 49
degrees, at 6:00 a. m. The mean
temperature for the 24 hours was 62 de-
grees. Relative humidity, 51 per cent.
Precipitation, a trace.
Temperature at 6:00 a. m. today, 50
degrees.

AN EXEMPLARY FINANCIAL RECORD

Not One Dollar of Deficiency or
Bonded Debt Incurred by New
Mexico Since 1899—Reduction of
Indebtedness—Territorial Institu-
tions Well Taken Care of.

The Territorial Tax Levy.

To begin with, it has been necessary
to tabulate the tax levies during the
past nine years, showing the manner
in which the various amounts have
been distributed under the several
principal funds. The terms of the
governors do not correspond exactly
with the grouping by years in this
table for the reason that an outgoing
administration and legislature pass
laws and make levies which bind
their successors for two years.

With this distinction well in mind,
it becomes a very easy matter to com-
pare the financial record of the ad-
ministrations during recent years in
the matter of tax levies as shown by
the table.

Territorial Purpose Fund.

This fund more than all others com-
bined may be taken as an index of the
administration of the business and
financial affairs of the Territory be-
cause all other funds cover appropria-
tions for one or more specific purposes
and mismanagement can be detected
easily. But the Territorial purpose
fund covers all provisions for interest
on the public debt, maintenance of
the penitentiary, salaries and other ex-
penses of all officials of the Territory,
judges, district attorneys and clerks
of the district courts, miscellaneous
funds, maintenance of the capitol, sup-
port of the national guard, and, in fact
every appropriation made in a lump
sum. Despite the fact that several new
offices have been created by the legis-
lature during the past six years, all of
the demands have been met on a 6
mill levy, while the average levy in
former years was 6 1-2 mills and even
this levy failed to obviate a contin-
ually recurring deficiency.

Current Deficiencies Fund.

A perusal of the second column dis-
closes the fact that the legislature of

1897 was obliged to levy 1.25 mills for
1897 and 1898 to reap sufficient funds
to wipe out deficiencies in the Terri-
torial purposes fund, and this, notwith-
standing the issuance of \$101,800 Cas-
ual Deficit bonds and \$104,000 Refund-
ing bonds in 1893, still left the neces-
sity for issuing \$123,000 Certificates of
Indebtedness to cover deficits of the
years 1893 to 1897.

Public Institutions and Charities.

A glance at the table of tax levies
will show that the average levy for
Territorial Institutions prior to 1899
was only 1.9 mills, while the average
since that year has been nearly twice
as large, or 3.66 mills. Likewise, there
was no levy for public charities from
1895 to 1898, but since 1899 the aver-
age levy has been .62 mills, and a simi-
lar condition is shown as regards pro-
vision for buildings for educational
purposes, the average levy since 1899
having been .19 mills.

Levies to Redeem Bonds.

Probably the greatest contrast is
that shown in the levies for sinking
funds. This important feature of gov-
ernmental finance was practically an
unknown quantity until the legislature
of 1899 began to grapple with the sub-
ject. Since that date 3.20 mills of the
increased tax rate have been levied for
that vital factor of public credit, the
provision for redemption of outstand-
ing bonds.

This levy, added to those for Public
Institutions and Charities, 3.66, and .62
mills, respectively, accounts for prac-
tically 7 1/2 mills out of the total average
of 14 mills for all Territorial funds.

Educational and Charitable Institu- tions.

It is a fact greatly to be regretted
that, prior to 1899, very little interest
was manifested by the legislature in
the Territorial institutions for Educa-
tional and Charitable purposes. From

TABLE SHOWING DISTRIBUTION OF TERRITORIAL TAX
LEVY BY MILLS DURING PAST 9 YEARS.

Year.	Territorial Purposes	Current Deficiencies	Territorial Institutions	Bldgs. for Edu- cational Purposes	Public Charities	Public Im- prove- ments	Sinking Funds to Redeem Bonds	Total
1895	6.	1.75	7.75
1896	6.	1.75	7.75
1897	7.	1.25	2.0550	10.80
1898	7.	1.25	2.0550	10.80
Average	6.50	6.25	1.90	None	None	None	.25	9.275
1899	6.	3.10	.55	.55	2.30	12.40
1900	6.	5.10	.25	.55	4.15	14.05
1901	6.	3.50	.15	.59	3.40	13.64
1902	6.	3.5059	.65	3.25	13.90
1903	6.	5.1081	.60	3.00	15.51
Average	6.	None	3.66	.19	.62	.25	3.20	13.92

COMPARISON OF BONDED DEBT OF THE TERRI- TORY IN 1899 AND 1904.

Bonds for Legitimate Purposes.

Title of Bond.	Date of Issue.	Amount.
Capitol Building.....	1894-5	\$ 200,000
Capitol Contingent.....	1887	50,000
Asylum.....	1891	25,000
Penitentiary Funding.....	1894-5	81,000
Territorial Institutions.....	1895	35,000
Military Institute.....	1895	15,000
Asylum.....	1895	30,000
Capitol Rebuilding.....	1895	75,000
Capitol Rebuilding.....	1899	60,000
		\$ 575,000

Bonds to Pay Deficiencies:

Current Expense.....	1887-8	150,000
Provisional Indebtedness.....	1889	200,000
Casual Deficit.....	1893	101,800
Funding Deficit.....	1893	104,000
Deficit of 1893 to 1899.....	1899	123,000
		678,800

Total Bonded Debt in 1899..... \$1,449,800

Debt Reduced Since 1899:

Capitol Contingent.....	1887	50,000
Capitol Building.....	1884	4,000
Provisional Indebtedness.....	1889	10,000
Deficit of 1893 to 1899.....	1899	122,900
Sinking Funds on hand June 30, 1904		209,165
		395,065

Net Debt June 30, 1904..... \$854,735

examination of the various finance bills
passed by the different legislatures,
including that of 1897, it can be readi-
ly seen that no appropriations were
made for these institutions except of
the most meager kind, and a further
examination of the territorial treasur-
er's reports will prove that after
those appropriations, such as they
were, were made, they were never paid
except in part.

All this has been changed in recent
years. The territorial institutions are
in a flourishing condition; educa-
tional institutions rank with those of a simi-
lar character in the older states and
the charitable institutions are a credit
to the Territory. Appropriate and
substantial buildings have been erect-
ed during the past three years, or are
now in process of construction, for the
institutions lately created, such as the
Blind Asylum, Reform School, Miners'
Hospital, and the Deaf and Dumb Asy-
lum.

In addition to this large sums of
money have been expended in enlarg-
ing or refurbishing and equipping the
Normal Schools at Las Vegas and Sil-
ver City, the Asylum for the Insane
and the Penitentiary.

During the past three years twelve
counties of the Territory have receiv-
ed from the territorial treasurer over
one-half million of dollars, all derived
direct from taxation.

More than \$179,000 per year to
maintain institutions and charities,
representing 6 1-3 mills of the present
tax levy as shown by the average col-
lection of taxes during the past three
years. These figures do not include
\$139,000 for permanent improvement
derived from the sale of public lands.

The Territorial Debt.

There has been prepared from offi-
cial records an abstract showing all
issues of Territorial bonds outstanding
in 1899. The bonds have been group-
ed in such a manner as to show at a
glance the several issues made to se-
cure funds for permanent public im-
provements, as well as those issues to
cover deficits, and finally the reduc-
tions accomplished since 1899.

From the table it will be seen that
at the time the deficits incurred be-
tween 1893 and 1899 had been funded,
the total debt of the Territory was al-
most \$1,250,000 and of that amount the
enormous sum of \$678,700 represented
deficiencies incurred in twelve years,
or an average deficit of more than \$56-
000 per year.

Since 1899 not one dollar of defi-
ciency or bonded debt has been in-
curred, while the careful management
of financial affairs has made it possi-
ble to provide for the payment of \$395-
065 of debt, or an average of \$79,000
per year.

The record of recent years has re-
stored to the Territory its good name
with eastern investors and the Casual
Deficit bonds of 1893, amounting to
\$101,800, have been refunded at 4 per
cent, instead of 5 per cent as formerly,
thus saving the people \$20,360 in inter-
est during the time they have yet to
run.

MAY DECLARE STRIKE.

If Wage Demand of Employees on New
Subway are Not Compelled
With.

New York, Sept. 3.—The executive
heads of the three union organizations
which are asking for a readjustment
of the wages of the motormen in the
new subway, were in conference today
considering what steps shall be taken
if it becomes necessary to force their
demands. Upon the future action of
the subway authorities depends the
question of whether a general strike
on the Interborough Rapid Transit
Company's lines will follow a contin-
ued refusal of the company to grant
the demand made by its employees.

MEET INSTANT DEATH.

Seven Persons are Killed and Twenty-
Five Injured in Street Car Acci-
dent at St. Louis.

St. Louis, Mo., Sept. 3.—Seven per-
sons were killed and twenty-five in-
jured, several fatally, in the wrecking
of a suburban street car by a Wabash
passenger train at the Sarah Street
crossing today. The train, which is
said to have been running thirty miles
an hour, struck the car squarely in
the center and the occupants had no
chance to escape.

PRONOUNCED TEXAS FEVER.

This Disease Has Been Causing the
Death of Many Cattle in Penn-
sylvania.

Lancaster, Pa., Sept. 3.—A disease
that has been causing the death of a
large number of cattle sent to the local
stock yards from the west and pur-
chased by the farmers has been pro-
nounced Texas fever. The outbreak
has been reported to the federal au-
thorities. It is alleged that the inspec-
tors have been negligent.

Cloudcroft, "Nature's Poof Garden."
Season June 18 to September 30, 1904.

LARGE FIRE AT MEMPHIS

Destroys Immense Amount of
Property in Heart of Whole-
sale District.

TOTAL LOSS \$800,000

One Fireman is Seriously Injured and
Six Others Overcome by
Smoke.

Memphis, Tenn., Sep. 3.—A fire in
the heart of the wholesale district to-
day destroyed property approximately
in value of \$800,000. The fire origi-
nated in the Oliver Finne Grocery Co.,
from an unknown cause, completely
destroying the stock and building of
that firm and spreading to the neigh-
boring stores, some of which were to-
tally destroyed. One fireman was seri-
ously injured by falling from a ladder,
and six others were overcome by the
heat and taken to the hospitals.

THE TERRITORIAL SUPREME COURT

Mandamus of Caledonia Coal Company vs. B.
S. Baker, U. S. District Judge,
Prayed For.

The Supreme Court met in ad-
journed session at four o'clock yester-
day afternoon. There were present:
Chief Justice W. J. Mills, Associate
Justices John R. McFie, Frank W. Par-
ker, W. H. Pope and Edward A. Mann,
and Clerk J. D. Sena.

The petition for the granting of an
original mandamus directed against
Associate Justice B. S. Baker, presid-
ing judge of the Second Judicial Dis-
trict, in the case of the Caledonia
Coal Company versus the Atchison, To-
peka & Santa Fe Railway Company
and the Santa Fe Pacific Railroad Com-
pany was brought up for argument.

It appeared that in this case Judge
Baker had quashed summons against
the Santa Fe Pacific Railroad and the
Atchison, Topeka & Santa Fe Railway
Company, which had been served on
E. P. Ripley, president of the two com-
panies at Albuquerque upon the con-
tention of the two railroad companies
that they were not doing business in
the Territory, thus dismissing the case.
Respondents filed motion to dismiss
upon the ground that the Supreme
Court had no jurisdiction. The argu-
ments were made for the petitioners
by Attorney N. B. Field, of Alberque,
and for the respondents by R. E. Twit-
chell, of Las Vegas.

The court convened again this morn-
ing at nine o'clock, members of the
court being present as at yesterday's
session. At the opening of the session
no announcement was made as to the
time when opinions would be handed
down. The court at once proceeded
to hear oral arguments in a mandamus
proceeding brought up on appeal from
Bernalillo County in the case of the
Territory of New Mexico ex rel R. J. C.
Menlman, et al versus the District
Court of Bernalillo County, which in-
volves the question whether this pro-
ceeding should be brought upon ap-
peal or by writ of error. N. B. Field
appeared for relators, and W. B. Chil-
ders, Charles A. Spiess and R. E. Twit-
chell for respondent.

Upon conclusion of the arguments
in the foregoing case the court pro-
ceeded to hear oral arguments in case
No. 1059, Sofre Alexander, relator, ver-
sus Seferino Crollett, justice of the
peace, which is a motion to quash a
writ of prohibition. N. B. Field re-
presented the relator, and W. B. Chil-
ders appeared for the respondent.

The court adjourned at twelve
o'clock and met again at two o'clock
this afternoon.

At this afternoon's session case No.
988, Benjamin H. Dye, et al, appellants,
versus H. Crary, et als., appellees, was
argued and submitted. Case No. 934,
Territory ex rel, E. J. McLean & Com-
pany, appellants, versus D. & R. G. R.
R. Co., appellees, was submitted on
briefs.

The court will meet again on Mon-
day, September 12, at which time it is
understood that opinions in several im-
portant cases will be handed down.

VICTIM OF BULLETS WILL PROBABLY RECOVER

Special to the New Mexican.
Albuquerque, Sept. 3.—Pitcher F.
Starr, who was shot twice by Stella
Henderson, and who yesterday was in
a precarious condition, will in all prob-
ability survive. Since yesterday at
noon he has rallied. He will, however,
be unable to participate in any ball
games for the remainder of the season.
Stella Henderson is still confined in
the jail awaiting developments.

SANTA FE NEW MEXICAN

THE NEW MEXICAN PRINTING COMPANY, PUBLISHERS.

MAX. FROST, Editor.
PAUL A. F. WALTER, Manager and Associate Editor.
PERCY F. KNIGHT, Secretary and Treasurer.

Entered as Second Class matter at the Santa Fe Postoffice.

The New Mexican is the oldest newspaper in New Mexico. It is sent to every postoffice in the Territory, and has a large and growing circulation among the intelligent and progressive people of the Southwest.

RATES OF SUBSCRIPTION.	
Daily, per week, by carrier.....	25
Daily, per month, by carrier.....	\$1 00
Daily, per month, by mail.....	75
Daily, one year by mail.....	7 50
Daily, six months, by mail.....	4 00
Daily, three months, by mail.....	2 00
Weekly, per year.....	2 00
Weekly, six months.....	1 00
Weekly, per quarter.....	75
Weekly, per month.....	25



"I DO NOT UNDERSTAND YOU NEW MEXICO PEOPLE! NONE OF YOU SHOULD BE WILLING TO ACCEPT JOINT STATEHOOD, AS YOU WILL GET SINGLE STATEHOOD JUST AS SOON AS JOINT STATEHOOD. MAKE YOUR FIGHT ON THE SINGLE STATEHOOD LINE; I WILL HELP YOU HERE AND IN WASHINGTON!" REMARKS OF AN INFLUENTIAL MEMBER OF THE COMMITTEE ON RESOLUTIONS IN THE CHICAGO REPUBLICAN CONVENTION. THIS MAN HOLDS ONE OF THE MOST IMPORTANT PUBLIC POSITIONS IN HIS STATE AND IS PROMINENT AND STRONG IN THE NATION'S CAPITAL.

APPARENT DECREASE BUT REAL INCREASE IN SANTA FE COUNTY TAX VALUATIONS.

The County of Santa Fe shows a reduction this year in the valuation of taxable property from that of the year of 1903, of something over \$300,000. This, however, does not prove a decrease in actual valuations. Quite the reverse, there has been real and gratifying increase. The valuation for the year 1903 was \$2,207,000 and for the year 1904 it is \$1,899,872. The seeming reduction therefore is \$307,128. This is easily explained by the following figures:

An assessment of \$20,000 on the electric light plant of the Corralito Gold Mining Company situated in the Madrid precinct was struck from the returns as erroneous and improper. It should never have appeared thereon, as under the Territorial statute the property was exempt from taxation and should never have been listed.

Another item which looked big last year and which crept into the rolls through some inexplicable blunder in the assessor's office was the return of the Ramirez land grant in the Santa Fe river canon just east of town as containing 272,000 acres at \$1.00 per acre, and was therefore assessed at \$272,000. This year this erroneous assessment was discovered by County Commissioner Soligman, and was cut down to the proper figure, namely 272 acres at the valuation of \$272, making a decrease of \$271,728.

The Ortiz Mining Company was assessed in 1903 twice at the valuation of \$50,000 each time. One of these assessments was, of course, erroneous and this year, the property of the company was assessed but once, thus making another reduction of \$50,000.

The taxable property of the Espanola precinct which appeared on the Santa Fe County tax rolls in 1903 at \$92,000, owing to the fact that the precinct was taken from this county and transferred to Rio Arriba County, lost to Santa Fe County \$92,000 valuation in this item. The assessment on land grants described as being claimed possessed by "unknown owners" has been cut down from \$119,000 to \$19,000 on account of the action of the Territorial Board of Equalization reducing the value of land grants for assessment purposes. There was also quite a reduction in the number and valuation of sheep in the county, as last year 14,000 Colorado sheep grazed in this county and were returned for taxes, although none such were ever collected. This year this item had to be taken off. There was also a reduction in the number of sheep generally as it was claimed that many animals had died during the winter and spring on account of the drought. There was a reduction in the railroad mileage of the Denver and Rio Grande in the sum of \$10,000, this mileage being contained in the precinct of Espanola.

The number of goats was reduced by several thousand because the Onderdonk Live Stock Company disposed of its holdings of these animals and they were shipped out of the county. The losses from these items alone amount to about \$560,000, therefore, an actual increase of about \$250,000 has taken place in the assessed value of the county. This, with a proper assessment, could be increased materially, which would result in a reduction of the present apparently very high

tax rate. This county will experience another loss in taxable property in the year 1905 by the segregation of Moriarty precinct which will be transferred to the new county of Torrance. Nevertheless, there is a healthy if slow, growth and there is no cause for despair.

GOOD-BY DAVE.

Now comes the amazing intelligence that the Honorable David Bennett Hill, discoverer of the Sphinx of Esopus, inventor of the famous "gold dispatch," ex-city attorney, alderman, mayor, legislator, lieutenant governor, governor, senator and all-around "Pooh-Bah" is about to withdraw from public life and hide his mental rushlight in the umbrageous shades of Wolfert's Roost. What a censorious world this is when such an innocent action as this is regarded as only one more cunning trick, by the cynical newspapermen one of whom says in the Inter-Ocean that the announcement of the former senator's relinquishment of politics has caused considerable speculation as to the motive that impelled him to do so. Knowing politicians wink and declare it is only a piece of political strategy hatched out at Democratic headquarters in New York. They assert that Mr. Hill will be back in political life again provided—provided that something happens which, it is believed, would be less likely to happen if it were generally believed that the former senator intended to be a factor in national politics.

The condition referred to hinges on the result of the November election. If Judge Parker should by any chance get a majority of votes in the electoral college and become President, the knowing ones assert, Hill would succeed to the mantle of John Hay as Secretary of State. Such a prospect has been the specter of some of Judge Parker's most substantial supporters in the Presidential race. When it was first suggested that in case Judge Parker should be elected Hill would be his chief cabinet officer, a howl went up from the Wall Street end of the campaign. Cleveland, Belmont, and that type of Democrats would not hear of such a suggestion. But it would not down, and the Cleveland press has of late been busy with cartoons against the sage of Wolfert's Roost. These attacks have their effect on the managers of Parker's campaign. And, as the knowing ones put it, Hill has at least temporarily put himself out of the way as a bugaboo.

It is pointed out that, should Judge Parker win, it would be an easy matter for him to call Hill to his Cabinet, and that the latter would cheerfully accept—for his party's sake.

This all means that David B. is to keep as quiet as possible so that the Cleveland wing of the party may be deceived into believing that he has no influence with Parker and thus secure their support in the coming campaign and election. Then in the extremely improbable event of Parker's election he would pay his political debts to Hill when it would be too late to hinder him. It is hardly possible that an old bird like Cleveland can be caught by such chaff as this. Governor Odell and the New York Republican leaders are much pleased to hear that the threatened retirement of the Sage of Wolfert's Roost will not take place until January next. This is very kind of the said Sage as his aid is needed to help to carry New York for Roosevelt and Fairbanks. The New Mexican hopes it is true.

The Albuquerque Republican Convention must not forget to put itself on record against the attempted steal of the waters of the Rio Grande and its tributaries belonging to the people of New Mexico by the International Dam grafters and the land grabbers in El Paso. The best interests of the people of the Territory demand that the strongest possible resolutions condemning the International Dam scheme and protesting against the carrying out of the nefarious and wicked plan to put a stop to the progress of the 150,000 people in the Rio Grande Valley in New Mexico be passed and adopted by the convention and that by a unanimous vote.

Thomas W. Lawson of Boston has offered to put up \$20,000 for the proof that Chairman Patrick H. McCarren of the New York State Democratic Executive Committee and friend and adviser of Judge Alton Brooks Parker is not the New York agent of the Standard Oil Company. Up to date, Chairman McCarren has not picked up the glove thus thrown down and the chances are that he never will. Twenty thousand dollars with Chairman McCarren is such a bagatelle that he "would not stoop to conquer."

A Constantinople correspondent cables that Abdul Hamid the II, Sultan of Turkey, is deeply affected by the death of his brother, ex-Sultan Murad V, whom he has held in prison for something like thirty years. Abdul Hamid has become so used to the sight of his brother as a prisoner that the latter's sudden release by death has shocked him. The two brothers loved each other so much, you know!

That Liao Yang correspondent is evidently a well posted man. He telegraphed on Wednesday that the heaviest fire in the battle then going on was on the southern wing of the battle field and where the Japanese guns were most numerous. This is true beyond contradiction. People who expect the heaviest fire where there are but a few guns should not be too disappointed.

LIGHT AND DARK.

Day and night, sunshine and shadow are not more different from each other than a healthful from a sickly woman. The healthful woman carries light and sunshine with her wherever she goes.



The woman who suffers from ill-health casts a shadow on her own happiness and the happiness of others. She cannot help it. Those who suffer cannot smile and sing. Ill-health in woman is generally traceable to disease of the delicate womanly organism. Many women have been restored to happiness by the use of Dr. Pierce's Favorite Prescription. If there is an invalid woman, suffering from female weakness, prolapsus, or falling of womb, or from leucorrhoea who has used Dr. Pierce's Favorite Prescription without complete success Dr. Pierce would like to hear from such person—and it will be to her advantage to write as he offers, in perfect good faith, a reward of \$500 for any case of the above maladies which he cannot cure.

"I feel it my duty to inform you that I had been a sufferer for many years from nervousness with all its symptoms and complications," writes Mrs. O. N. Fisher, of 1802 Lexington Ave., New York, N. Y. "I was constantly going to see a physician. I was induced to ask Dr. Pierce's advice. I then took five bottles of 'Favorite Prescription.' I am not now cross and irritable, and I have a good color in my face; have also gained about ten pounds in weight and one thousand of comfort, for I am a new woman once more."

The dealer who offers a substitute for "Favorite Prescription" does so, to gain the little more profit paid on the sale of less meritorious medicines.

Dr. Pierce's Common Sense Medical Adviser is sent free on receipt of stamps to pay expense of mailing only. Send 21 one-cent stamps for the paper-covered book, or 31 stamps for the cloth bound. Address Dr. R. V. Pierce, Buffalo, N. Y.

The prosperous town of Farmington, in San Juan County, will hold a fair, commencing on September 12, and ending September 16. Great preparations are being made and fine exhibits of superior fruit and cereals, as well as livestock, are being prepared. This year's fair will be the 25th annual exhibition. The existence of the fair commenced with the settlement of the town, 25 years ago. The event has been growing in favor, has become more elaborate yearly, and is quite important in San Juan County.

Colonel Younghusband's expedition has reached Lhasa but is unable to find the Dalai Lama in order to make a treaty. That being the case, the expedition will have to stay in the capital of Tibet for some time and the country may become a British dependency. If this should turn out to be the case, there will be no harm done. Probably this end was not unexpected by the British foreign office.

The campaign of George P. Money, Democratic candidate for delegate, has not yet commenced, but will soon. It may be presumed that as soon as Mr. Money puts up the money, things political will become lively. At the end of the campaign, however, Mr. Money will know that while money is absolutely necessary in New Mexico political affairs, Mr. Money is not so important.

A correspondent of the New Mexican from Roosevelt County writes that the Republicans of that county although they may not be very numerous, will nevertheless put up a ticket and make a fight for success. This is the proper kind of spirit and will be appreciated by the Republicans all over the Territory. Every fight helps and every vote counts.

The story that W. J. Bryan is to be Secretary of the Treasury under Judge Parker, should the latter be elected, is vehemently denied by Chairman Taggart and the Judge's friends. It is too dangerous a story to be allowed to go on without strong contradiction. The eastern supporters of Judge Parker do not at all look with favor upon Mr. Bryan.

Senator Fairbanks is looking after his end of the campaign in great shape. It looks very much as if he will be the next vice president of the United States and a good one at that.

Colonel Bryan is throwing brickbats at the Democratic platform, but has only sweet smiles for Judge Parker, who runs upon that platform. Mr. Bryan is certainly a versatile genius.

If there is any dirty Republican linen on hand to be washed, it should not be washed in public at this time. Sabe?

How's This?

We Offer One Hundred Dollars Reward for any case of Catarrh that cannot be cured by Hall's Catarrh Cure.

F. J. CHENEY & CO., Toledo, O. We, the undersigned, have known Mr. F. J. Cheney for the last 15 years and believe him perfectly honorable in all business transactions and financially able to carry out any obligations made by this firm.

WALD RO. KINN & F. MARVIN, Wholesale Druggists, Toledo, O. Hall's Catarrh Cure is taken internally, acting directly upon the blood and mucous surfaces of the system. Testimonials sent free. Price 75 cents per bottle. Sold by all Druggists.

Take Hall's Family Pills for constipation.

HOME VISITORS EXCURSIONS. Home Visitors' excursion tickets will be sold to Indiana, Ohio, and Kentucky via the Santa Fe at one fare plus \$2.00 for the round trip, dates of sale September 6th, 13th, 20th, 27th, and October 11th, return limit, 30 days from date of sale.

H. S. LUTZ, Santa Fe, N. M.

The New Mexican prints the news.

THE OXFORD CLUB

Has on hand a constant supply of the finest brands of WINES, LIQUORS AND CIGARS All the Popular Games.

SAN FRANCISCO ST., SANTA FE, N. M.

J. E. Lacome, Proprietor.

R. J. PALEN, President.

J. H. VAUGHN, Cashier.

HENRY L. WALDO, Vice President.

THE FIRST NATIONAL BANK

SANTA FE, NEW MEXICO

United States Designated Depository.

Renovated and Refurbished Throughout.

Cuisine and Table Service Unexcelled.

The Palace Hotel

WILLIAM VAUGHN, PROP.

Large Sample Rooms for Commercial Men.

Santa Fe

New Mexico

Excerpt from the Dictionary of the

Equitable Life Assurance Society

AFFLUENCE, n.—An influx of money to the credit of one who applies a small portion of income to an Equitable Life Insurance Policy.

2—Abundance of property; wealth.

"An old age of elegance, Affluence and ease."

Secure it now and save regrets in your old age.

90 per cent of the business ventures fail. A policy in the EQUITABLE may save you.

MRS. L. A. HARVEY, Agent.

102 Chapelle St., Santa Fe, N. M.

A. P. HOGLE

Undertaker and Funeral Director

GALISTO STREET

Best of Reference Given as an EMBALMER. Night Calls.

RESIDENCE PHONE 141.



Table Wines!

AT "OUR PLACE"

Will Be Found a Full Line of Table Wines for Family Trade.

Orders by Telephone Will Be Promptly Filled.

W. R. PRICE, Prop.

Santa Fe, N. M.

P. F. HANLEY

DEALER IN

Fine Wines, Liquors & Cigars

Imported and Native Wines for Family Use. OUR SPECIAL FINE—Old Crow, McStrayer, Gochensheimer Rye, Taylor and Paxton, Old Jordan and Monogram, Ky., Whiskies.

SAN FRANCISCO STREET

SANTA FE, N. M.

PROFESSIONAL CARDS.

Attorneys at Law.

MAX. FROST, Attorney at Law. Santa Fe : : : New Mexico

EDWARD L. BARTLETT, Lawyer, Santa Fe, New Mexico. Office in the Capitol.

RICHARD H. HANNA, Attorney at Law, Office Griffin Block Phone 66.

EUGENE A. FISKE, Attorney and Counselor at Law, Santa Fe, N. M. Supreme and District Court Practice.

BENJAMIN M. READ, Attorney-at-Law, Santa Fe, N. M. Office Sena Block. Palace Ave.

WILLIAM H. H. LLEWELLYN, Attorney-at-Law, Las Cruces, New Mexico. District attorney for Dona Ana, Otero, Grant, Luna and Sierra Counties. Third Judicial District.

CHAS. F. EASLEY, (Late Surveyor General.) Attorney-at-Law, Santa Fe, N. M. Land and mining business a specialty.

E. C. ABBOTT, Attorney-at-Law. Practices in the District and Supreme Courts. Prompt and careful attention given to all business. District Attorney for the Counties of Santa Fe, Rio Arriba, Taos and San Juan. Santa Fe, N. M.

EDWARD C. WADE, Attorney-at-Law. Practices in all the courts. "Mining cases and mineral patents a specialty." LAS CRUCES, NEW MEXICO.

FRANK W. CLANCY, Attorney-at-Law. (District Attorney 2d Judicial District.) Practices in the District Courts and the Supreme Court of the Territory, also before the United States Supreme Court in Washington. ALBUQUERQUE - - NEW MEXICO.

A. B. RENEHAN, Attorney-at-Law. Practices in the Supreme and District Court. Mining and Land Law a specialty. Rooms 8 and 9, Sena Building, Palace Avenue, Santa Fe, N. M.

OSTEOPATHY

DR. CHARLES A. WHEELON, Osteopath. No. 108 Palace Avenue. Successfully treats acute and chronic diseases without drugs or medicines. No Charge for Consultation. Hours: 9-12 m., 2-5 p. m. Phone 154.

DENTISTS

DR. C. N. LORD, Office, Kahn Block, over Spitt's Jewelry Store. South Side of Plaza.

C. O. HARRISON, D. D. S., Office: Over Fischer's Drug Store. On the Plaza. (Successor to Dr. Manley.)

Civil Engineers & Surveyors

JAY TURLEY, Civil Engineer and Surveyor, Irrigation Work a Specialty. U. S. Deputy Mineral Surveyor. Santa Fe, N. M.

Stenography & Typewriting

LEW H. BLAKE, Stenography and Typewriting. Notary Public. 135 Palace Avenue, Santa Fe, N. M. Calls promptly answered. Office Phone 76. Residence Phone 151.

NOTARY PUBLIC, STENOGRAPHER AND TYPEWRITER. TRANSLATIONS

From Spanish into English and from English into Spanish carefully made. Office West Side of Plaza. FRANCISCO DELGADO, Santa Fe, N. M.

ARCHITECTS

HOLT & HOLT. Architects and Civil Engineers. Maps and surveys made, buildings and construction work of all kinds planned and superintended. Office, Montoya Building, Plaza, Las Vegas. Phone 94.



QUARTERLY STATEMENT

Of the Territorial Treasurer of New Mexico, 3rd Quarter of the 55th Fiscal Year, Commencing June 1, 1904, and Ending August 31, 1904.

Title of fund or account.	Balances May 31, 1904	Receipts dur. quarter	Transfers to funds	Transfers from funds	Payments dur. quarter	Balances Aug 31, 1904
Interest fund.....	\$ 23,079 17		\$ 25,416 59		\$ 17,389 96	\$ 31,105 80
School fund.....	725 00				725 00	725 00
Interest on deposits.....	1,698 32	2,014 37			99 50	3,613 19
Int. and Sfg. fund, Cert. of Ind.....	93 51	12,473 20		4,700 00	7,866 71	7,866 71
University of New Mexico.....	1,290 53		8,078 88		6,548 84	2,820 57
University of N. M., deficiency fund.....	75 18		64 67		98 09	41 74
University of New Mexico income fund.....	200 00	308 84			508 84	399 00
Agricultural College.....	752 55		4,935 81		5,290 27	186 63
Agricultural College income fund.....	215 04	526 03			254 44	1,995 00
Agricultural College permanent fund.....		1,995 00				1,995 00
Reform School fund.....	543 98		1,221 03		1,345 20	419 81
Reform School income fund.....	631 58	189 23			631 58	189 23
Reform School permanent fund.....	12,835 07		1,000 00		12,835 07	1,000 00
Blind Asylum fund.....	940 58		1,221 03		1,741 80	419 81
Blind Asylum income fund.....	277 84	336 43			277 84	336 43
Blind Asylum permanent fund.....	2,132 38	1,656 33			2,132 38	1,656 33
New Mexico School of Mines.....	3,064 37		5,579 95		6,700 00	1,944 33
School of Mines income fund.....	238 34	178 90			238 34	178 90
School of Mines permanent fund.....			1,221 03			1,221 03
Deaf and Dumb Asylum.....	83 92					83 92
Deaf and Dumb Asylum income fund.....	54 75	206 20				260 95
Deaf and Dumb Asylum permanent fund.....						
Miners Hospital fund.....	1,543 98		1,221 03		2,765 01	2,765 01
Miners Hospital income fund.....	793 67	296 00			1,089 67	1,089 67
Miners Hospital permanent fund.....	1,850 00	1,930 00			3,800 00	3,800 00
New Mexico Insane Asylum.....	1,467 34		18,573 99		13,577 24	6,404 09
Insane Asylum income fund.....		143 14				143 14
Insane Asylum permanent fund.....	443 87				443 87	443 87
Penitentiary income fund.....	132 04	397 84			214 17	315 71
Penitentiary current expense fund.....	1,809 99		5,403 26		3,294 96	3,917 29
Pen. maintenance fund.....	1,431 60		12,298 57		12,037 33	1,692 84
Pen convicts earnings fund.....	3,664 35	4,545 69			6,058 52	1,551 52
Penitentiary permanent fund.....	145 34	1,930 00		1,000 00	11 83	920 50
New Mexico Military Institute.....	293 55		5,585 13		5,730 47	311 97
Military Institute income fund.....	4,000 00	311 97			283 55	1,920 00
Military Institute permanent fund.....	60 00	1,920 00			4,000 00	60 00
Water Reservoir permanent fund.....	374 00					374 00
Normal School, N. M. (Silver City).....	1,197 10		6,187 88		4,797 65	2,587 33
Normal School, S. C., income fund.....	659 75	193 00			659 75	193 00
Normal School, S. C., permanent.....	1,140 00				1,140 00	
Normal School, Las Vegas.....	334 81		6,334 44		6,065 74	503 51
Normal School, Las Vegas, income fund.....	64 88	193 00			64 88	193 00
Normal University, Las Vegas, permanent.....	140 00				140 00	
Special purposes.....	3,188 96	61 61			1,020 00	2,230 57
Legal expense fund.....	102 60					102 60
Special tax fund, 50th fiscal year.....	7 97					7 97
Common School income.....	7,197 17	2,520 89			12 00	9,706 06
Proceeds 5 per cent U. S. land sales perma.....	11,875 92					11,875 92
Charitable institutions.....	5,402 63	10,047 43			6,208 42	9,241 64
Deficit fund.....	154 60					154 60
Sheep sanitary fund.....	1,891 85	3,658 37			2,627 61	2,922 61
Cattle indemnity fund.....	1,144 74	9,397 73			7,616 17	2,926 30
Compensation of assessors.....	1,921 59	8,743 42			8,382 83	2,282 18
Salary fund.....	16,017 77	3,426 00	37,198 57		13,336 89	33,405 45
Supreme court fund.....	600 76		163 74		54 96	709 54
Miscellaneous fund.....	8,822 60		7,502 59		3,750 51	12,568 68
Militia fund.....	714 44		512 73		599 72	600 45
Capitol contingent expense fund.....	13 37		3,074 83		2,295 58	1,775 55
Cap. Bldg. Bonds Sfg. fund.....	153,606 52	18,711 16				172,317 68
Casual deficit bonds.....	101,800 00				96,000 00	5,800 00
Provisional indebtedness sinking fund.....	38,349 83	6,238 82				44,588 65
Geological survey.....	417 44	61 66				479 10
Louisiana Purchase Exposition fd., 54th F. Y.....	1,398 29	98 77			8,300 00	1,497 06
Louisiana Purchase Exposition fd., 55th F. Y.....	1,069 02	7,336 38			105 40	105 40
Scenic Route.....	304 55				301 82	2 73
United States Land Commission.....	6,859 34		500 00		1,690 16	5,669 18
Maintenance Board of Public Lands.....	3,769 75				817 50	2,952 25
The Palace Income Fund.....	23 19	384 00			297 10	110 09
So. Western and International Express Co.....	63 29					63 29
Territorial purposes, 54th fiscal year.....	71 29	1,479 32	1,550 61		1,550 61	
Territorial purposes, 55th fiscal year.....	204 38	75,115 89	76,870 88		76,870 88	
Territorial institutions, 54th fiscal year.....	41 65	863 66	905 31		905 31	
Territorial institutions, 55th fiscal year.....	173 68	62,098 42	62,272 10		62,272 10	
Improvement Rio Grande Income.....	77 18	1,179 19	500 00		44 94	711 43
Orphans Children Home, Belen.....	140 81		3,052 54		2,947 49	245 86
Water Reservoir in. for irrigation purposes.....	439 29	600 00			220 30	819 99
Public Buildings at Capitol Income.....		332 46				332 46
U. S. Annual Appro. for Agr. College.....		25,000 00				25,000 00
Total.....	\$439,493 86	\$269,135 74	\$147,798 90	\$147,798 90	\$291,210 63	\$417,418 97

Recapitulation.	Disposition of Funds.	Amount.
Balances May 31, 1904.....	National Bank of Commerce, N. Y., bond special	\$ 5,902 62
Receipts during quarter.....	First National Bank of Santa Fe.....	44,742 80
Total to be accounted for.....	Bank of Commerce, Albuquerque.....	28,000 00
Payments during quarter.....	First National Bank of Las Vegas.....	30,000 00
Balance Aug 31, 1904.....	First National Bank of Albuquerque.....	30,000 00
	San Miguel National Bank, Las Vegas.....	30,000 00
	First National Bank of Raton.....	30,000 00
	First National Bank of Roswell.....	15,000 00
	National Bank of Commerce of New York.....	19,073 46
	Citizens National Bank of Roswell.....	20,000 00
	First National Bank, Clayton.....	20,000 00
	First National Bank, Carlsbad.....	20,000 00
	Silver City National Bank.....	20,000 00
	Taos County Bank, Taos, N. M.....	\$3,818 90
	New Mexico Savings Bank & Trust Co., Alb.....	\$781 19
	National Bank of Com. N. Y. Cap. Bldg. bonds.....	100,100 00
	Total.....	\$ 417,418 97
	*Funds not available	

CALL FOR A REPUBLICAN COUNTY CONVENTION OF THE COUNTY OF SANTA FE, NEW MEXICO.

A delegate convention of the Republican voters of the County of Santa Fe, is hereby called to meet at the Court House in the City of Santa Fe, at 2 o'clock in the afternoon of Friday the 9th day of September 1904, for the purpose of selecting eleven delegates to the Territorial Republican Convention which will meet at Albuquerque on the 12th day of September, 1904, for the purpose of placing in nomination a candidate for delegate from New Mexico to the 59th Congress of the United States of America.

The various precincts will be entitled to representation, to-wit:
No. 1, Pojoaque, 2 delegates; No. 2, Tesuque, 2 delegates; No. 3, Santa Fe, 7 delegates; No. 4, Santa Fe, 8 delegates; No. 5, Agua Fria, 2 delegates; No. 6, Cienega, 2 delegates; No. 7, Cerrillos, 3 delegates; No. 8, Gallisteo, 4 delegates; No. 9, San Ildefonso, 3 delegates; No. 10, Dolores, 1 delegate; No. 11, Golden, 1 delegate; No. 12, Canoncito, 3 delegates; No. 13, Glorieta, 1 delegate; No. 14, Chimayo, 3 delegates; No. 15, Santa Cruz, 4 delegates; No. 17, Santa Fe 5 delegates; No. 18, Santa Fe 5 delegates; No. 19, Madrid, 3 delegates; No. 20, San Pedro, 2 delegates; No. 22, Ortiz, 3 delegates.

Alternates will not be recognized. Proxies will not be received unless held by persons residents of the same precinct from which the persons giving the proxies are elected.

The primaries will be held on Wednesday, the 7th day of September, 1904, at 7:30 p. m., in precincts No. 3, 4, 12, 17, 18, and 19, and at 3 p. m. in all the other precincts at the places and by the persons hereinafter designated.

No. 1, Pojoaque, Eutimio Roibal, at school house, District No. 16, No. 2, Tesuque, Ramon Jimenez, at school

house; No. 3, Santa Fe, Telesforo Ribera, at city school house, ward No. 1; No. 4, Canuto Alarid, at Manderfield Hall on Galisteo Street; No. 5, Agua Fria, Lino Montoya, at school house, District No. 6; No. 6, Cienega, Trinidad Alarid, at Trinidad Alarid house; No. 7, Cerrillos, A. L. Kendall, at Justice of the peace office; No. 8, Gallisteo, Pedro Pena, at school house; No. 9, San Ildefonso, Jose E. Gomez, at school house, District No. 9; No. 10, Dolores, Lee English, at Lee English house; No. 11, Golden, Nick Montoya, Sr., at John Hart's Hall; No. 12, Canoncito, Roque Tudesque Pfeifers, Red Hall; No. 13, Glorieta, Juan Barela, at Barela's store; No. 14, Chimayo, Rinaldo Ortega, at school house; No. 15, Santa Cruz, Ramon Bustos, at Bartolo Bustos' house; No. 17, Santa Fe, Atanacio Romero, at Fireman's Hall; No. 18, Santa Fe, Marcelino A. Ortiz, at the court room in the court house; No. 19, Madrid, Gus Olsen, at school house; No. 20, San Pedro, F. C. Buell, at school house; No. 22, Ortiz, Epimenio Romero, at school house.

The precinct chairman and secretaries are directed to send to the chairman of this committee, immediately after the holding of the primaries, a correct list of the delegates elected, signed by the chairman and secretary of the meeting. Contest, if any, must be filed with this committee not later than nine o'clock in the morning of the day of the convention in order that this committee may report same to the convention. The precinct primaries will be called to order by the chairman of the precincts according to the above list at the exact hour above designated.

Should precinct chairmen be unable to be present at these primaries, the Republicans at the meeting will elect a temporary presiding officer to call the meeting to order. The first order of

business, will be to receive nominations for chairman, and a sufficient time will be given to make such nominations. All the nominations must be received and submitted, if a division is asked for, such shall be had, the vote taken by two tellers appointed by the chair, one from each side and the person having the highest number of votes and the majority of the meeting shall be declared chairman. Thereafter the election of other officers and the delegates shall be proceeded with.

By order of the Republican Central Committee of the County of Santa Fe.

DAVID M. WHITE, Chairman.

M. A. ORTIZ, Secretary.

When troubled with constipation try Chamberlain's Stomach and Liver Tablets. They are easy to take and produce no gripping or other unpleasant effect. For sale by all druggists.

SCHOOL BUILDING, SANTA FE, NEW MEXICO.

Sealed proposals will be received until 12 o'clock noon, September 24, 1904, for the erection of a 12-room and Assembly Hall School Building, for the Board of Education of the City of Santa Fe, according to plans and specifications and instructions to bidders on file at the office of the Clerk of the Board; also, at the office of I. H. and W. M. Rapp, Architects, Las Vegas, N. M. All proposals must be accompanied by a certified check amounting to 4 per cent of such proposal. Bids must be made out on printed forms obtained of the architects. The Board reserves the right to reject any or all bids.

Address, T. E. CATRON, President, Santa Fe, N. M., August 30, 1904.

SO SOOTHING.

Its Influence Has Been Felt By So Many Santa Fe Readers. The soothing influence of relief After suffering from Itching Piles, From Eczema or any itchiness of the skin, Makes one feel grateful to the remedy.

Doan's Ointment has soothed hundreds. Here's what one Santa Fe citizen says: C. M. Conklin ex-city clerk, of San Francisco street says: "There came to my notice sometime ago a case of hemorrhoids, commonly called piles. They were of the bleeding protruding variety and itched intensely. Doan's Ointment came to the notice of the party afflicted and was procured at Ireland's Pharmacy and a course of the treatment given. The first application soothed and a continuance of its use for some time longer radically disposed of that far too prevalent plague."

For sale by all dealers. Price 50 cts. Foster Milburn Co., Buffalo, N. Y., sole agents for the United States. Remember the name, Doan's, and take no substitute.

Notice for Publication.

(Homestead Entry No. 521.)

DEPARTMENT OF THE INTERIOR.

Land Office at Santa Fe, N. M., Aug. 19, 1904. Notice is hereby given that the following named settler has filed notice of his intention to make final proof in support of his claim, and that said proof will be made before the Register or Receiver at Santa Fe, N. M., on Sept. 27, 1904, viz: Albino Gonzales for the sec. 24, new sec. 2 and 3 section 18, township 18, north, range 12 east. He names the following witnesses to prove his continuous residence upon and cultivation of said land, viz: Guadalupe Roibal, Isidro Ribera, Placido Armijo, Cesar Lujan, all of Pecos, N. M.

MANUEL R. OTERO, Register.

Fearful Odds Against Him.

Bedridden, alone and destitute. Such in brief was the condition of an old soldier by name of J. J. Havens, Versailles, O. For years he was troubled with kidney disease and neither doctors nor medicines gave him relief. At length he tried Electric Bitters. It put him on his feet in short order and now he testifies: "I'm on the road to complete recovery." Best on earth for liver and kidney troubles and all forms of stomach and bowel complaints. Only 50c. Guaranteed by Fischer Drug Co.

Notice for Publication.

(Homestead Entry No. 7610.)

DEPARTMENT OF THE INTERIOR.

Land Office at Santa Fe, N. M., Aug. 27, 1904. Notice is hereby given that the following named settler has filed notice of his intention to make final proof in support of his claim, and that said proof will be made before the Register or Receiver at Santa Fe, N. M., on October 11, 1904, viz: Harvey M. Shields for the new section 7, township 19 north, range 8 east. He names the following witnesses to prove his continuous residence upon and cultivation of said land, viz: Hugh Murray, Leonard Wischofer, James A. Smith, J. M. Shields all of Pecos, N. M.

MANUEL R. OTERO, Register.

Sour Stomach.

When the quantity of food taken is too large or the quality too rich, sour stomach is likely to follow, and especially so if the digestion has been weakened by constipation. Eat slowly and not too freely of easily digested food. Masticate the food thoroughly. Let five hours elapse between meals, and when you feel a fullness and weight in the region of the stomach after eating, take Chamberlain's Stomach and Liver Tablets and the sour stomach may be avoided. For sale by all druggists.

PROPOSALS FOR BUILDINGS. Office of Indian Affairs, Washington, D. C., Aug. 17, 1904. Sealed Proposals endorsed "Proposals for Buildings, Mesquero School, New Mexico," and addressed to the Commissioner of Indian Affairs, Washington, D. C., will be received at this office until two o'clock p. m. Sept. 27, 1904, for furnishing and delivering all necessary materials and labor required to construct and complete buildings, water and heating systems, with electric lighting, etc., at the Mesquero School, New Mexico, in strict accordance with plans, specifications and instructions to bidders which may be examined at this office, the offices of the Herald, El Paso, Texas; News, Alamogordo, N. M.; New Mexican, Santa Fe, N. M.; Morning Journal, Albuquerque, N. M.; Improvement Bulletin, Minneapolis, Minn.; American Contractor and Construction News, Chicago, Ill.; U. S. Indian Warehouses, 265 S. Canal St., Chicago, Ill.; 815 Howard St., Omaha, Neb.; 602 S. 7th St., St. Louis, Mo., and 19 Westcott St., New York City; Builders & Traders' Exchange, Omaha, Neb.; Milwaukee Wis., and St. Paul, Minn.; Northwestern Manufacturers' Association, St. Paul, Minn., and at the school. For further information apply to Jas. A. Carroll, Superintendent, Mesquero, N. M., or to this Office, A. C. Tomner, Acting Commissioner.

A BOY'S WILD RIDE FOR LIFE.

With family around expecting him to die, and a son riding for life, 18 miles, to get Dr. King's New Discovery for Consumption, Coughs and Colds, W. H. Brown, of Leesville, Ind., endured death's agonies from asthma; but this wonderful medicine gave instant relief and soon cured him. He writes: "I now sleep soundly every night." Like marvelous cures of consumption, pneumonia, bronchitis, coughs, colds and grip prove its matchless merits for all throat and lung troubles. Guaranteed bottles 50c. and 1.00. Trial bottles free at Fischer Drug Company, Santa Fe.

Painkiller CURES CRAMPS & COLIC. PERRY DAVIS.

PENNYROYAL PILLS CHICHESTER'S ENGLISH. Original and Only Genuine. BARELY DISGUISED. Ladies, do not be deceived by cheap imitations. Take no other. Before using Pennyroyal Pills, read the directions. Buy of your druggist, or send for a free trial bottle. Pennyroyal Pills are sold in all parts of the world. The London Dispensary, Ltd., is the sole manufacturers. Chichester's English Pennyroyal Pills.

SCIENTIFIC EMBALMING
At Our Up-to-Date Undertaking Parlors
The Latest Scientific Methods of Embalming are Employed. Calls Answered from the Parlors Day or Night or by DOROTEO SENA, Agent. Our Parlors Consist of a Nicely and Appropriately Fitted Up Suite at No. 222 Lincoln Avenue, West Side Plaza, Santa Fe, New Mexico.

DUDROW & MONTENIE
FINE MONUMENTS TO ORDER.

JACOB WELTMER
BOOKS, STATIONERY, MAGAZINES, PERIODICALS.
Headquarters for SCHOOL SUPPLIES
Fine Confectionery and Cigars
208 San Francisco St. Santa Fe, N. M.

HOTEL NORMANDIE
Don Gaspar Avenue and Water Street.
Reasonable rates for board and room.
Good table and service. Well furnished rooms.
New furniture. All windows screened.
Free bath in connection.
CARRIE L. THOMAS, Proprietor.

THE CHAS. WAGNER FURNITURE CO
WE LEAD IN EVERYTHING.
Chinaware, Glassware, Picture Frames and Moldings Stoves and Ranges
Furnaces Made to Order Goods Sold on Easy Payments

CHARLES WAGNER
"Licensed Embalmer."
Telephone 10. San Francisco Street.
Night Calls Answered from residence—Telephone No. 1.

DO YOU EAT?
If You Do Try the New Cuisine at the
Coronado Cafe
Short Orders a Specialty. All the Delicacies of the Season. Open Day and Night.
Regular Meals 25 Cents. 21 Meals for \$4.50.
* G. LUPE HERRERA, Proprietor *
254 San Francisco Street, Next to Cartwright Davis Co's Store.

CHARLES W. DUDROW.
LUMBER - SASH - DOORS
All Kinds of Building Material.
CORD AND STOVE WOOD EXTRA DRY AND CUT TO FIT YOUR STOVE
CERRILLOS AND HAGAN COAL
Delivered to any part of the City.
TRANSFER AND STORAGE
We Haul Everything that is Movable.
One 35 Santa Fe Branch Office and Yards Cerrillos, N. M.

H. C. YONTZ MANUFACTURER OF—
Mexican Filigree Jewelry
DEALER IN
Watches, Clocks, Jewelry and Hand Painted China.
Repairing of fine watches and jewelry work a specialty.
MEXICAN RUGS and INDIAN GOODS * FILIGREE at WHOLESALE and RETAIL.
247 San Francisco St.

HENRY KRICK SOLE AGENT FOR
Lemp's St. Louis Beer.
ALL KINDS OF MINERAL WATERS MAIL ORDERS PROMPTLY FILLED
The Trade Supplied From One Bottle to a Carload.
Guadalupe Street, Santa Fe, N. M. Phone No. 36.

THE CLUB
We handle the Leading Brands of KENTUCKY BOURBONS and PENNSYLVANIA RYES
Goods bought in bond, purity guaranteed.
PURE CALIFORNIA WINES, IMPORTED and DOMESTIC CIGARS and TOBACCOS
Our Club Rooms are Large, Comfortable and Airy.
AKERS & TOWNSEND, Proprietors.
San Francisco St. Telephone No. 94



GET
THE
HABIT
OF
BUYING
YOUR
CLOTHES
HERE

Where's the man who hasn't use for an extra pair or two of

TROUSERS

when he sees what he likes, and the price is his way? It's about now that you begin to notice how dilapidated your Trousers are.

Here are splendid TROUSERS that will give your new suit effect.

We must clean out in order to make room for the winter stock. Handsome patterns every pair of them, prices down to the bottom

\$2.00, \$2.50, \$3.00, \$3.50

according to your idea and taste.

SALMON & ABOUSLEMAN,
WHOLESALE and RETAIL DEALERS

249, 252 and 253 San Francisco St.

S. SPITZ

DIAMONDS

JEWELRY

WATCHES, CLOCKS,
SILVERWARE, ETC.

MEXICAN FILIGREE JEWELRY

ALL KINDS OF DESIGNS IN
Filigree Fob Chains,
Filigree Neck Chains,
Filigree Souvenir Spoons,
Filigree Brooch Pins,
Filigree Bracelets,
Filigree Card Cases,

North Side Plaza - Santa Fe

ST. MICHAEL'S COLLEGE

Santa Fe, New Mexico.



THE 46TH YEAR BEGINS SEP. 1, 1904.

The College is empowered by law to issue FIRST-CLASS TEACHERS' CERTIFICATES to its Graduates, which Certificates are to be honored by School Directors in the Territory of New Mexico.

BROTHER BOTULPH, President.

REMINGTON TYPEWRITERS

NEW MEXICAN PRINTING CO., Dealers.

Santa Fe New Mexico

The Hallack Paint

Covers Most Surface,
Wears Longest

Standard for Quality

and is Made Solely to Resist
the Peculiar Atmospheric
Action of this Dry Climate.

For Sale by **THE**

W. A. McKENZIE Hardware Store.

SOCIAL AND PERSONAL

Mr. and Mrs. S. G. Cartwright, of this city, spent the week at Salt Lake City, Utah.

Mrs. W. H. Whiteman has returned from a month's visit with relatives and friends in Denver.

Mrs. H. E. Gibson departed today for Cleveland, Ohio, where she will make an extended stay.

Miss Dolores Taylor, of Denver, has arrived in the city, and has entered as a pupil at the Loretto Academy.

On Wednesday next Mrs. L. Bradford Prince will entertain the Santa Fe brides-to-be at a brides' luncheon.

Mrs. F. J. Lewis, who has been visiting Mrs. William Ash, left this morning for her home in Durango, Colorado.

Mr. and Mrs. A. B. Smith left this morning for St. Louis, where they will spend two weeks visiting the World's Fair.

Mrs. J. G. Griffin-Schaffer, mother of W. E. and A. J. Griffin, will be a guest of Mrs. T. B. Catron for the next week or so.

Mrs. L. Bradford Prince will entertain at a D. A. R. luncheon Friday of next week, in honor of Mrs. W. T. Thornton.

Allen Fletcher will leave the middle of the month for Ann Arbor, Michigan, again to take up his studies in the Michigan University.

Honorable T. B. Catron is in Socorro County on mining and legal business. He will return home during the forepart of the coming week.

Miss Marie McWhirter, of Iron Mountain, Michigan, will leave her home for Summit September 7th and will spend the winter at this resort.

Mr. and Mrs. Oscar C. Watson, of this city, will leave during the coming week for the east, their object being to visit the World's Fair at St. Louis.

Miss Louise Platt, of St. Louis, Missouri, arrived in the Capital City on a visit to her sister, Mrs. J. B. Wood. She will remain here a month or longer.

Mrs. Samuel Eldott, of San Juan, and Mrs. Frank Bond, of Espanola, who have been spending several days here on a visit, departed this forenoon for their homes.

Morris Thomas will leave Monday for Colorado Springs, where he will resume his studies in literature, fine arts and the ancient languages at the Colorado College.

J. H. Crist, of Monero, chairman of the Democratic Territorial Central Committee, will come to Santa Fe on Monday evening to open the Democratic headquarters.

Territorial Secretary J. W. Reynolds, who is now on the ranches of the Lagunita Livestock Company, in Leonard Wood County, expects to return to Santa Fe Tuesday.

George Bruner and Frank A. Hughes of El Paso were today guests of Harry Hanna, while en route to Boulder, Colorado, where they will attend the University of Colorado.

Judge Henry L. Waldo, solicitor of the Santa Fe Railway for New Mexico, who has spent the past three weeks in Las Vegas, has gone to Kansas City, Missouri, for a visit.

Mrs. W. E. Martin, of Socorro, and Mrs. E. R. Newcomb, of Huntington, Indiana, Mrs. Martin's aunt, who have been on a visit to Mrs. H. O. Bursum, have returned to the Gem City.

Mrs. Joseph Hersch leaves tomorrow for St. Louis, to meet her son and his wife. Before her return home, Mrs. Hersch will visit Chicago and Kansas City, and will be absent about a month.

Mr. and Mrs. John C. Balcomb, who spent their honeymoon at the Sparks Ranch on the Pecos will return to Santa Fe tonight and will leave for

their home at El Paso on next Tuesday.

Robert L. McCance, of Pittsburg, auditor of the Santa Fe Central Railway Company, who has been in the city for ten days past, will leave tomorrow for his home. He will return to Santa Fe in about two weeks.

Senator W. H. Andrews, president of the Santa Fe Central Railway and Albuquerque Eastern Railroad, and General Manager W. S. Hopewell, of the latter road, were passengers to Albuquerque today on railroad business.

Mrs. H. S. Lutz and children, who have been visiting relatives in eastern Pennsylvania, started for the West this afternoon from Lehigh, Pennsylvania. Before returning to Santa Fe they will spend a week with friends in Kansas.

Miss Ethel Walz and Miss Ella Goodson, who have been house guests of Mrs. T. B. Catron for several weeks past, left last evening for El Paso, Miss Walz's home. Miss Goodson will visit there for several weeks and will then return to Santa Fe.

E. A. Cahoon, of Roswell, left this week for San Francisco, California, where he will attend the triennial convocation of the Knights Templar. After the convocation he will visit points of interest on the Pacific Coast and will not return until October 1.

Mr. and Mrs. L. Imhoff, tourists of Flagstaff, Arizona, who have been in the capital, left this forenoon for Antonio, where they will make a brief stay. From Antonio they will go to Lumberton and Edith to spend several weeks visiting friends.

Dr. T. P. Martin of Taos, and son, John, will reach the city this evening from their northern home. The boy will leave tomorrow for Roswell, to attend the New Mexico Military Institute in that city. Dr. Martin will return to Taos Monday morning.

Mrs. W. T. Porterfield, who has been visiting friends in Prescott, Arizona, stopped off here last evening and visited Mrs. Charles West, of Grant Avenue, while en route to her home in Durango. She expressed herself as being pleased with the climate of the Capital City.

Horace B. Henning, city editor of the Albuquerque Journal, on Wednesday evening of this week, at Springfield, Illinois, was married to Miss Cora Reice, daughter of the late Adjutant General Jasper N. Reice, of Illinois. Lloyd Adams, of St. Louis, was best man.

Mrs. W. T. Thornton, of Guadalajara, Mexico, will arrive here tomorrow evening, and will be the guest of Mr. and Mrs. J. P. Victory for a week or longer. Mrs. Thornton is not only well known in Santa Fe, but is also very popular and highly respected, as she and her husband, former Governor Thornton resided here for 22 years. She is a sister of Mrs. J. P. Victory. During the past seven years former Governor and Mrs. Thornton have made their home in Guadalajara, where the former is engaged in important and extensive mining operations and land grant deals. From here Mrs. Thornton will go to Missouri, where she will visit her old home in Sedalia, and will also attend the exposition at St. Louis.

Miss Jennie L. Clark and Miss Prudence Clark, of Minneapolis, who have been making an extended stay in the Southwest in hope of benefiting the health of the former, were morning passengers over the Denver and Rio Grande Railroad for Espanola, where they will spend a short time before returning home. Miss Jennie Clark said that the condition of her health was materially improved by her brief stay in Santa Fe and vicinity and that she hopes to come here within a few months to remain indefinitely.

Mr. and Mrs. George A. Fleming returned last evening from the Pecos Forest Reserve, where they have been spending a week. Yesterday Mr. and Mrs. Fleming rode from the Sparks

ALWAYS IN THE LEAD!

ANOTHER SHIRT WAIST SALE!

Unprecedented Values in
WOMAN'S FINE SHIRT WAISTS

We have placed on sale all of our \$2, \$1.75, \$1.50 and \$1.25 Summer Waists for
ONE DOLLAR!

Also a big reduction in prices on all Summer Goods.

SELIGMAN BROS. CO.

THE LOWEST PRICED HOUSE IN THE CITY FOR FINE GOODS!

TELEPHONE 36

P. O. BOX 219

place to the Harvey resort by train. They had planned to take the Santa Fe Central Railway at Kennedy, but on arriving there learned that the time of the north bound train had been changed. In company with several others, they then went to Cerrillos, where they took the Santa Fe and returned to Santa Fe at six o'clock this morning, No. 7, due at Lamy last evening was five and one-half hours late.

One of the social events of the week was a party and dinner given last evening by Mrs. Charles West, at her home on Grant Avenue, in honor of Miss Du Val, who will leave next Wednesday for San Antonio, Texas, to take a position as instructor in the public schools. Each guest was presented with a daisy as a souvenir of the evening. Those in attendance were: Mr. and Mrs. I. B. Hanna, Mrs. John W. W. Hanna and daughter, Miss Leona, Judge John R. McFie, Dr. C. A. Wheelon, Miss McDaniel, and the Messrs. Wrightsman, Whitlock, and Hanna, of this city, and Messrs. Bruner and Hughes, of El Paso.

Mrs. J. W. Reynolds delightfully entertained last Saturday evening for a company of young friends. The game of hearts occupied the greater part of the time. There were four tables, and Miss Josephine Woods was successful in carrying off the first prize. Miss Ritchie Seligman was awarded the consolation. Dainty refreshments were served by the hostess. Those participating were: Misses Ethel and Mabel Basley, Josephine Woods, Ritchie Seligman, Hortense McKenzie, Blanche and Marion Vogdes, Jean McKenzie, Diertra Diertr, Anita Bergere, Sylvia Morrison, Evelyn Dougherty, Uda Gibson and Florence Spitz. Mrs. James L. Seligman assisted the hostess.

Miss Edna Berger, who will leave next week for Chicago to attend school, was made the victim of a pleasant surprise party at her home in the south part of the city last evening. A large number of friends of the unsuspecting hostess congregated at the home of Miss Daisy Patterson, on west San Francisco Street, and about nine o'clock repaired to the Berger home. The early part of the evening was devoted to film and other games. At 10:30 o'clock delicious refreshments were served. Vocal and instrumental music were indulged in. Those present were: Misses Sheffield, Hogle, McDaniel, Gentry, Blanchard, Patterson, Sloan, and Berger, and Messrs. Hogle, Newcomb, Patterson, Wrightsman, Dodge, Sloan, Hanna, Bruner, Pierce, Hughes and Kauffman.

W. Scott Smith, private secretary to the secretary of the Interior, and daughter, Miss Edna Smith, of Washington, D. C., arrived in the city Thursday, and are guests at the executive mansion. Mr. Smith is on his annual vacation, which he will spend in New Mexico and Arizona. While in the Territory, he and his daughter, accompanied by Indian Inspector C. F. Nesler, will visit the pueblo towns and the party, accompanied by Superintendent Clinton J. Crandall, of the U. S. Indian Industrial School here, will leave Monday morning for a trip to the several pueblos north of the city. They expect to return Thursday night. The pueblos in central and southern New Mexico will then be visited and thereafter the trip will be extended to Phoenix, Arizona, where they will be guests of Governor and Mrs. Brodie. Before leaving Arizona for the east, the villages of the Pimas, Papagos and other Pueblo Indians will be visited. Mr. Smith has held the important position he now occupies for six years, this fact being absolute proof that he is a very competent, efficient and successful official. By profession he is a journalist having worked for fifteen years on the New York Evening Post. When he commenced work there, the paper was under the editorial management of the late William Cullen Bryant. Mr. Smith and daughter expect to derive much pleasure

and benefit from their pleasant tour and are enthusiastic about the fine climate of this city as well as concerning its many historical and social attractions.

Mrs. Lillian L. Hersey will open a private school on Tuesday, September 6th in the house on the reservation formerly occupied by Judge McFie. The school will be conducted according to the latest methods and ideas in teaching. Spanish, domestic science and Sloyd will be new and interesting features of the school.

TEMPLAR MASON TO VISIT SANTA FE

Three Special Trains Carrying Knights From New Haven, Philadelphia and Cleveland to be in Capital City Week After Next.

Three special trains carrying Knights Templar on their way home from the triennial convocation at San Francisco, California, are scheduled to visit Santa Fe week after next. The first will carry a commandery from New Haven, Connecticut, 93 strong, occupying a special train consisting of four standard sleepers, a diner and a baggage car. It is scheduled to reach Santa Fe on Tuesday, September 13, at 11 a. m., and will stay in the city seven hours. This train is run under the auspices of Simmons and Masters of Boston, Massachusetts.

The second train will arrive here at 2 p. m., on Thursday, September 15, and will carry 85 people, the train being run under the auspices of J. J. McCoy, tourist agent of the Pennsylvania Railroad. It carries Mary Commandery of Philadelphia, and will remain in Santa Fe three hours.

The third special will be of the Oriental Commandery of Cleveland, Ohio, carrying 100 people and consisting of four standard sleepers, a composite car, a baggage car and a commissary car. It will arrive on Friday, September 16, at 4:15 p. m., and will leave at 6:45 p. m. on the same evening.

All kinds of fresh fish at the Bon Ton.

Church Announcements.
Cathedral—Fifteenth Sunday after Pentecost, Sept. 4, 1904. First mass at 6:30 o'clock a. m. Second mass at 9:30 a. m., sermon in English. Third mass at 10:30, sermon in Spanish. At 6:30 o'clock p. m. vespers and rosary.

Church of the Holy Faith (Episcopal) Palace Ave., Rev. W. R. Dye in charge: Sunday School at 9:15 a. m. Morning service with sermon and Holy Communion at 11:00 o'clock. Evening prayer at 8:30 o'clock. Public cordially invited.

St. John's M. E. Church, Don Gaspar Ave.—Sunday-school, 9:45 a. m.; Divine services at 11 a. m. and 7:30 p. m. prayer-meeting Wednesday night at 7:30 p. m. All are welcome. W. A. Cooper, Pastor.

Fresh oysters and fish! Have we got 'em? Well, I guess we have, at the Bon Ton.

NOTICE! LADIES!

For fall and winter Head-gear in ready to wear and other kinds I am now showing a good assortment. Am on hand to take your orders and complete same before you leave for the World's Fair. Call and inspect as well.

MISS A. MUGLER,
Southeast Corner Plaza

If it is in the drug market and you want it you can
procure it at
IRELAND'S PHARMACY

MINOR CITY TOPICS

Mrs. Amado Chavez, who was operated upon last week by Dr. D. Knapp, is rapidly gaining strength.

There is an epidemic of diphtheria at Estancia. One family, consisting of six members, is down with the disease.

Assistant Superintendent R. C. Garret, of the Territorial Penitentiary, was confined to his residence today by a slight attack of illness.

Deputies U. S. Marshals John M. Wiley and Cipriano Baca, of Albuquerque, arrived in town yesterday to be present at the meeting of the United States Court here Monday next.

Drs. J. M. Diaz and D. Knapp yesterday morning performed an operation on Mrs. J. S. Candelario, who has been indisposed for some time. The patient, it is believed, will rapidly recover.

The Russians and Japs base ball teams will contest for honors tomorrow on the East Side grounds. James Read will captain the Bear forces and N. L. King will direct the operations of the Mikado's men.

Pitcher Hill, until recently a prominent twirler for a Los Angeles team has accepted a position with the Albuquerque Browns. The Duke City nine also has an acquisition from San Antonio, Texas.

The Guild of the Church of the Holy Faith is requested to meet at Miss Simmons on next Monday afternoon at 3 o'clock to make arrangements for the picnic to be given by the guild in the near future.

Over \$100 were cleared as a result of the concert under the auspices of Mrs. T. B. Catron at the court house last Friday night. The proceeds will go to

help swell the library fund of the Woman's Board of Trade.

Train No. 7 from the East on the Santa Fe was eight hours late last evening, the train arriving here at 5:30 o'clock this morning. Train No. 2 from the south and west was reported four hours late this afternoon.

Conductor Hartman, of the main line of the Denver & Rio Grande Railroad, has temporarily relieved Conductor Hill on the Santa Fe-Alamosa division of the Denver & Rio Grande Railroad. He made his first trip this forenoon.

Dr. Popplewell on Wednesday last performed another operation on Justice of the Peace Henry Pacheco, of precinct 18, at the latter's home on Upper Palace Avenue. The patient is resting easy and his speedy recovery is expected.

Monday, Labor Day, being a legal holiday, the postoffice will observe Sunday hours, the general delivery window to be open from 8:30 to 9:30 in the morning. The carriers will make one collection and one delivery in the morning.

George B. Monk of the United States Geological Survey, returned last evening from 25 miles north. While working at that point yesterday he encountered one of the heaviest rain storms that have passed over the section this summer.

In the darkness last night Juan Martinez and Manuel Ortega, of Upper Hillside Avenue, fell a distance of twenty feet into a well belonging to Lorenzo Martinez. No bones were broken, but both men were severely bruised and shaken up.

Coach Excursion tickets to St. Louis and Kansas City will be sold via the Santa Fe on Sept. 3rd and 4th at a rate of \$25.75 for the round trip. The limit of these tickets is 10 days from date of sale, allowing passengers to remain eight days in St. Louis.

Ladies, your attention is called to the

advertisement of Miss A. Augler, which it is announced that for fall and winter headgear a good assortment is on hand. Have your orders taken now and they will be completed before you leave for the World's Fair.

Eight car loads of rails for the Albuquerque Eastern Railroad have arrived at Torrance and a consignment of three car loads has just put in an appearance here. Other shipments are en route. Active work will begin on the grade of the road within a few days.

T. E. Hurst, who came here early in the week from St. Joseph, Missouri, in hope of benefitting his health, left today over the Santa Fe for Las Vegas. He has accepted a position as telegraph operator with the Santa Fe system and will begin a station somewhere in this vicinity.

Upon the petition of Supervisor of the Pecos Forest Reserve I. B. Hanna, Judge John R. McFie, of the First Judicial District Court, has granted injunctions against Venceslao Jaramillo, Santiago Garcia and Elario Garcia restraining them from pasturing their sheep and goats on the reserve.

Santa Fe Lodge No. 259, Fraternal Union of America, will hold its regular meeting on next Monday evening in K. P. Hall at which time there will be several initiations. Deputy Organizer Thornhill has arranged a special program for this meeting and all members are requested to be present.

Santa Fe is to have another big show. Sells and Dowds will pitch their tent in the Capital City Saturday September 24. The show is transported in twenty-four cars. Two advertising cars are now in the Territory and one will arrive here within a short time. The concern employs 35 agents and billposters.

Thomas Fitzsimmons, who for three weeks past has had a photograph gallery at the corner of San Francisco Street and Don Gaspar Avenue, removed to Raton today. In the near future he will pitch his tent at the headwaters of the Pecos Forest Reserve, at which point he expects to secure a number of photographs for the Santa Fe Railway Company.

Commencing today the Santa Fe Central will detour Rock Island trains Nos. 3 and 4. Train No. 3 will be handled to French over Atchison, Topeka & Santa Fe, thence to Torrance over the Santa Fe Central. Train No. 4 will be handled over the El Paso & Northeastern to Torrance and from Torrance to Kennedy over the Santa Fe Central, thence east over the Atchison, Topeka & Santa Fe.

Professor R. W. Twining, principal of the Santa Fe high school, who has repeatedly been requested to take the directorship of the Capital City Band, has announced that it will be impossible for him to do so on account of his time being occupied with his school work. Both Professor and Mrs. Twining, who came here several weeks ago from Wichita, Kansas, are very much pleased with the climate of Santa Fe. Mr. Twining has traveled in many states and territories, but says that the weather conditions here are the best to be had.

James DeMier has taken a position as messenger with the local office of the Wells Fargo Express Company.

Fine sweet eating apples, also cooking apples, just received at E. Dornenburg's meat market. See change in advertisement.

Detective Fulghum, of the Santa Fe Central Railway Company, and former deputy sheriff of Leonard Wood County, left this forenoon for Estancia.

H. S. Lutz, local agent of the Santa Fe Railway Company, who has been indisposed with a severe cold, is able to be about and is recovering.

J. Vigil was a morning passenger to Espanola, where he will make a short visit. From Espanola he will go to the Jemez Hot Springs to spend a vacation of four weeks.

A meeting of the Woman's Relief Corps will be held Monday afternoon at three o'clock at Post Hall. A full attendance is desired, as considerable business is to be transacted.

Carlos Digneo left today for St. Louis, where he will spend two weeks visiting the World's Fair. During his absence his brother, John Digneo, will have charge of his business.

Are you ambitious to go into business for yourself? You can soon do so by saving your money and depositing it, through the mails, with the Plaza Trust and Savings Bank of Las Vegas.

Denver and Rio Grande work car No. 4961, which has been in this vicinity all week, was sent from the local station to Alamosa this morning. The crew has been repairing a number of bridges on this division of the road.

The line-up of the Santa Fe Central baseball team, which leaves this evening at 7:25 o'clock for Las Vegas, to cross bats with the Meadow City Blues on Sunday afternoon, is as follows: P. Alarid, left field; George Parsons,

Dr. Price's CREAM Baking Powder

FOREMOST BAKING POWDER IN THE WORLD
Awarded highest honors
World's Fair. Highest tests
U. S. Gov't Chemists.

Price Baking Powder Co.
CHICAGO.

catcher; Will Pettus, second base; O. Digneo, first base; D. Anderson, third base; C. Lemke pitcher; C. Catron, center field; H. Alarid, shortstop; M. Alarid, right field; A. Digneo, substitute. Pitcher J. J. Craven, an addition to the team, will probably be given a try-out during the game. The members of the nine participated in an hour's practice on the college grounds last evening. Team work is what Captain Parsons is trying to develop, and judging from the fast and even playing of yesterday, he is accomplishing his purpose. The boys have no doubts regarding the result of Sunday's game.

Charles E. Saylor, of Philadelphia, has been enlisted by Major C. B. Vogdes, in charge of the U. S. Recruiting Office here, for the cavalry branch of the army. He has left for Jefferson Barracks, St. Louis, where he will receive instruction.

NOW WILL YOU GO?

The Campbell Brothers' big circus is coming to Santa Fe on Friday, September 16. This is the only point in this vicinity where they will exhibit this season and the opportunity to witness it should not be missed. In fact, this is the only big show that will be anywhere near the Capital City this year. It was at first doubtful if trackage could be secured here for their immense trains but the railroad company guarantees it, and their coming on Friday, the 16th, is now an assured fact. The consolidation of these big shows this year is something unheard of, two big shows in one, at one price of admission, two menageries, two museums, and two circus performances given all in one. The railroads will give special excursion rates, and the schedule of time of trains will be so arranged that no one will miss the great parade, which takes place at 10 a.m.

MARKET REPORT.

MONEY AND METAL.

New York, Sept. 3.—Commercial holiday till Tuesday and no quotations money or stocks.
New York, Sept. 3.—Money on call, easy unchanged. Prime mercantile paper unchanged. Silver 57½.
New York, September 3.—Lead and copper quiet unchanged.

GRAIN.

Chicago, September 3.—Close, Wheat, Sept. 104½; Dec. 106½.
Corn, Sept. 53½; Dec. 51½.
Oats, Sept. 31½; Dec. 33½.

PORK, LARD AND RIBS.

Pork, Sept. \$11.00; Oct. \$11.10.
Lard, Sept. \$7.00; Oct. \$7.10 @ 12.00½.
Ribs, Sept. \$7.27½; Oct. \$7.42½.

WOOL MARKET.

St. Louis, Mo., September 3.—Wool, is steady and unchanged.
Territory and western medium, 22 @ 24½ fine medium, 16 @ 18; fine, 15 @ 16.

STOCKS.

New York, Sept. 3.—Atchison 81½; pfd., 98½; New York Central, 123½; Pennsylvania, 126; Southern Pacific, 57½; Union Pacific, 99; pfd., 93½; U. S. Steel, 13½; pfd., 62½.

STOCK MARKETS.

Kansas City, Mo., Sept. 3.—Cattle market unchanged.
Native steers, \$3.75 @ \$6.00; Southern steers, \$3.50 @ \$4.00; Southern cows, \$1.50 @ \$3.00; native cows and heifers, \$1.50 @ \$4.70; Stockers and feeders, \$1.50 @ \$4.70; bulls, \$2.00 @ \$3.25; calves, \$2.50 @ \$5.50; western steers, \$3.00 @ \$4.50; western cows, \$1.50 @ \$3.50.
Sheep market nominally steady.
Muttons, \$3.25 @ \$4.00; lambs, \$4.50 @ \$5.85; Range wethers, \$3.25 @ \$4.00; ewes, \$2.50 @ \$3.50.
Chicago, September 3.—Cattle market steady.
Good to prime steers, \$5.40 @ \$6.10; poor to medium, \$3.50 @ \$5.05; stockers and feeders, \$2.00 @ \$3.50; cows \$1.25 @ \$4.10; heifers, \$1.50 @ \$4.25; canners, \$1.25 @ \$2.00; bulls, \$2.00 @ \$4.00; calves, \$2.50 @ \$6.25; Texas fed steers, \$3.00 @ \$3.75; western steers, \$2.50 @ \$4.00.
Sheep market steady.
Good to choice wethers, \$3.50 @ \$4.15; fair to choice mixed, \$3.25 @ \$3.60; western sheep, \$2.75 @ \$4.25; native lambs, \$4.00 @ \$6.00; western lambs, \$4.00 @ \$6.00.

CARTWRIGHT-DAVIS CO.

GEO. W. HICKOX, President S. G. CARTWRIGHT, Sec'y and Treas.

No. 250 San Francisco Street.

Grocery Telephone No. 4. Meat Market Telephone No. 49.

GREELEY POTATOES.

The potatoes from Greeley, Colorado rank as being of the very highest quality. We are now receiving them, and they are very fine indeed.
Per cwt \$1.65

MEADOW GOLD BUTTER.

We never tire of telling the good qualities of Meadow Gold Butter. It is pure, clean and of a most delicate flavor. These good qualities are retained and preserved by the package, which is air tight, moisture and odor proof.

OUR BAKERY.

Why not use our bread? It is made according to the most approved methods. It contains nothing that could by the remotest possibility be injurious to the health. It is sweet to the taste, clean to the sight and always fresh. Made only from the highest grade Kansas flour.

MEAT MARKET.

Only the choicest cuts of packing house corn fed beef, mutton and lamb are cut in our market. Give us a trial when you want something nice in the way of meats, bacon, hams, boiled ham, etc.

IMPERIAL FLOUR.

Our trade on Imperial Flour has been very satisfactory, but we would like every one in Santa Fe to use it who can appreciate its remarkable qualities. It makes the best of bread and is also a fine pastry flour. Probably the best pastry cook in the Southwest will use no other brand.
50 pound sack \$1.60

SOUTH SEA BLEND.

There has been a remarkable advance in the price of medium grade coffees. We are still selling South Sea Blend at 25 Cents per pound. We fear that we shall not be able to continue to do this much longer. Better buy sixty days' supply now.

FRUITS AND VEGETABLES.

We always have what the market affords in the way of fruits and vegetables.

HAY AND GRAIN.

We shall be pleased to fill your orders for hay, grain, feed, etc. Our stocks are always complete, the quality of the best and prices reasonable. See that your animals are well fed. We can do it for you.

A. F. SPIEGELBERG

257 San Francisco Street.

Indian and Mexican Wares and Curios

Blankets, Baskets, Pottery, Rag, Wax, Feather and Linen
Drawn Work, Opals, Turquoises, Garnets and Other Gems.

SPECIALTY

To have the best of everything in the line.

BOWLING

DUCK PINS

NEXT WEEK

Prizes for high scores before October 1.

E. S. ANDREWS

San Francisco and Shelby Streets.

Is this Your Wife?



You say: "No!" But she should remind you of a duty you owe your wife. If she has one of the old-fashioned, troublesome, cumbersome, cast-iron Cook Stoves—the kind that gets red hot all over—you can and all her kitchen troubles by buying her a "Quick Meal" Range.
The "Quick Meal" Steel Range is so thickly lined with asbestos that all the heat is kept inside the Range to bake and cook the meals. Instead of cooking the Cook. In that way it saves fuel and it also saves and sweetens temper.
"Quick Meal" Ranges are daily growing in popularity. They look well, they cook well, they bake well, they last well. That is why there are so many in use—every one recommends another.

We have just received a car load of

New Furniture

And will be pleased to show you through our establishment.

Goods sold on easy payments

DAVID S. LOWITZKI

Legal blanks of all kinds for sale at The New Mexican office.

San Francisco St.

Telephone 26.

H. S. Kaune & Co. GROCERS

Headquarters For

SANTA FE GROWN FRUIT

Try a Jar of
BISHOP'S GRAPE FRUIT OR ORANGEATE
POULTRY EVERY WEDNESDAY AND FRIDAY
VEGETABLES DAILY

PRIMROSE BUTTER

The purest and best Butter made, from the Cleanest Creamery in the world. Sealed in air-tight, odor-proof packages **PRIMROSE!**

BOSS PATENT and CRYSTAL PATENT Flour

BOSS PATENT : : : \$1.60 for 50 lb. Sack
CRYSTAL PATENT : : : \$1.55 for 50 lb. Sack

THE NEW MEAT MARKET

Located on San Francisco Street Next Door to Coronado Cafe.

Fine Sweet Eating Apples, also Cooking Apples just received. All kinds of Fresh Meats and Vegetables. Fresh Ranch Eggs.

Yours Respectfully, E. DOERNENBURG, Telephone 132

THE OLD CURIO STORE

J. S. CANDELARIO
321 San Francisco St.



The best place to buy Indian and Mexican Blankets, Pottery and Curios, also Relics from the Cliff Dwellings. Beautiful Mexican Drawn Work, Box 246.

Everything usually carried in a first-class and up to date drug establishment may be found at
IRELAND'S PHARMACY

Married Women

Every woman covets shapely, pretty figure, and many of them deplore the loss of their girlish forms after marriage. The bearing of children is often destructive to the mother's shapeliness. All of this can be avoided, however, by the use of Mother's Friend before baby comes, as this great liniment always prepares the body for the strain upon it, and preserves the symmetry of her form. Mother's Friend overcomes all the danger of child-birth, and carries the expectant mother safely through this critical period without pain. It is woman's greatest blessing. Thousands gratefully tell of the benefit and relief derived from the use of this wonderful remedy. Sold by all druggists at \$1.00 per bottle. Our little book, telling all about this liniment, will be sent free.

Mother's Friend

The Bradford Regulator Co., Atlanta, Ga.

MISS FAY LEE,

President of the Shakespearean Club, Kansas City.



"Your booklet came to my home like a message of health when I had suffered with headache, backache and bearing-down pains. I was weak, nervous and hysterical, and had not consulted any doctor, thinking it would pass away in time, but instead I found that the pains increased and were more frequent. I decided to try Wine of Cardui in a short time was much improved. It seemed to act like a charm. I kept up the treatment and the result was most satisfactory. Words fail to express my gratitude for the suffering that is now saved me. I am in fine health, physically and mentally. I can only say 'thank you', but there is much more in my heart for you."

BEARING-DOWN pains are the worst that women know. If you are suffering from this trouble you need not be uncertain about it. The pains in the abdomen and back that feel as if heavy weights were pulling down on the nerves of the stomach are "bearing-down pains". They may not be particularly severe at present but they are growing worse. That headache which nearly drives you distracted now is caused by the terrible

nervous tension. The nerves soon begin to give way under the strain. You perhaps jump at any unusual disturbance, or laugh or weep, hysterically, at no apparent cause. That is what Miss Fay Lee, 603 1/2 North Seventh Street, Kansas City, Kansas, was coming to when she rescued herself by taking Wine of Cardui. The Wine made her a strong, healthy woman again, as it has made a million other women strong and healthy. By inducing regular menstruation the entire system is relieved of the terrible wasting drains. The ligaments which hold the womb in place are strengthened by a healthy flow and that organ is returned to its normal position. Returning health is the result. This is what Wine of Cardui has done for thousands of the best women in America.

If you need advice write The Ladies' Advisory Department, The Chattanooga Medicine Company, Chattanooga, Tenn., describing all your symptoms freely, and a letter of advice will be sent you. Secure a \$1.00 bottle of Wine of Cardui from your druggist to-day.

A million suffering women have found relief in Wine of Cardui.

WINE of CARDUI

REMINGTON TYPEWRITERS

NEW MEXICAN PRINTING CO., Dealers, Santa Fe, New Mexico

USE THE SHORT LINE



In connection with the **ROCK ISLAND SYSTEM** TO VISIT THE HOME FOLKS.

Rate One Fare Plus \$2.00 for the Round Trip. Tickets on sale September 6th, 13th, 20th, 27th and October 11th, limited for return thirty days from date of sale. A Stop-over of Ten days allowed at St. Louis to visit the World's Fair.

Rates apply to all points in Indiana, to Sandusky, Columbus, Washington Court House, Wilmington, Cincinnati and points West thereof in Ohio, to Louisville, Hawesville, Powers, Lewisport and Owensboro, Kentucky.

You always get the lowest rates, quickest time, shortest lines and best meals via this route.

Ask your nearest ticket agent or call on or address:

T. H. HEALY, Passenger Agent, El Paso, Texas. A. N. BROWN, G. P. A.

World's Fair Service & Rates Through Pullmans to St. Louis Every Day

\$63.55, good for 90 days; on sale Sept. 1, 2, 5, 6, 7, 8, 19, 20, 22, 23; Oct. 3, 4, 5, 6, 19, 20, 26, 27.

ON NO. 2 which leaves here at 9:55 a. m., east of Kansas City sleeper runs over Alton-Burlington Route. Low Rates to World's Fair: 15 day tickets cost \$40.70; 60 day tickets cost \$49.10; tickets limited to Dec. 15 cost \$57.70. Very Cheap Excursion Rates: Tickets good 10 days, but honored only in coaches \$25.75. For literature and information apply to

H. S. LUTZ, Agt. A., T. & S. F. Ry., SANTA FE, N. M.

NEW MEXICO MILITARY INSTITUTE

ROSWELL, NEW MEXICO.

THE MILITARY SCHOOL OF NEW MEXICO Established and Supported by the Territory.

SIX MEN INSTRUCTORS, all graduates of Standard Eastern Colleges. New buildings, all furnishings and equipments modern and complete; steam-heated, gas-lighted, baths, water-works, all conveniences. TUITION, BOARD and LAUNDRY, \$200 per session. Session is three terms of thirteen weeks each.

ROSWELL is a noted health resort, 3,700 feet above sea-level; well-watered.

REGENTS—Nathan Jaffa, W. M. Reed, R. S. Hamilton, J. C. Lea and E. A. Cahoon

For particulars address

COL. J. W. WILLSON, Supt.

BIG CATTLE SHIPMENTS FROM NEW MEXICO

Poor Prospect for Winter Range the Primary Cause in Actuating the Movement.

From reports received at the office of the Cattle Sanitary Board, it is certain that the shipments of cattle from New Mexico within the next sixty days will break all records. The shipments, while confined to no particular part of the Territory, will be the heaviest in the north. Stockmen in Grant County and the Pecos Valley, in Colfax County and in Sierra County are sending in orders for cattle cars and the movement of stock will begin just as soon as the cars can be supplied.

The primary reason for the uncommonly large shipments is the fear that the winter range will not be sufficient to sustain the stock. This is especially true in the north. It is an apparently anomalous fact that while the north suffered least from the drought and stock has done well there throughout the year, yet the prospect for winter range is the poorest. The time for autumn frosts is approaching rapidly and the grass is far below the average. Rains sufficient to keep the range in fair condition throughout the summer began early and continued through the season, but the summer months have not been favorable to rapid growth. Consequently a large amount of stock will be moved from the northern ranges.

From Deming and from Tucuman the Cattle Sanitary Board has received word that the winter range promises to be excellent, the best in years, in fact, in the country surrounding those towns. Nevertheless, the shipments will be large. The conditions in the Pecos Valley, while not particularly encouraging, are not alarming. The movement of a considerable amount of cattle will give those which remain a chance to come through the winter well. Lincoln County has had a hard season, but the promise for winter is very good.

It is said that heavy shipments will also be made from other western states and territories. This will, of course be a menace to the market, and the New Mexico stockmen are trying to get their cattle to market as soon as possible. Owing to the collapse of the butchers' strike the market is now improving. It is estimated that the strike has already cost the stockmen of the west \$10,000,000.

INTERESTING STATISTICS CONCERNING WEATHER

Show Conditions That Have Prevailed During September for Past Thirty-two Years.

Director C. E. Linney, of the United States Weather Bureau in this city, has compiled interesting statistics covering the month of September during the past 32 years. Mr. Linney, however, is careful to state as follows: "The data is issued to show the conditions that have prevailed during September for 32 years, but must not be construed as a forecast of the weather conditions for the present month." For comparison, similar statistics for the cities of Denver and El Paso are given. The mean temperature at Santa Fe for September has been 61 degrees, for Denver 63 degrees, for El Paso 73 degrees. The warmest September during the past 32 years, despite what the oldest inhabitants might care to maintain, was the September of 1892, with an average temperature of 65 degrees; at Denver, 1897, 70 degrees; at El Paso 1891, 77 degrees. The hottest September day at Santa Fe was September 7, 1870, with 90 degrees; at Denver, September 5, 1899, with 97 degrees; at El Paso, September 2, 1899, with 100 degrees. The coldest September at Santa Fe was that of 1880, with an average temperature of 56 degrees, and the coldest September day, September 27, 1880, with 27 degrees; at Denver, September 22, 1895, with 27 degrees; at El Paso, September 26, 1899, with 42 degrees. The earliest date for killing frost at Santa Fe was September 25, 1889; for Denver, September 12, 1889; for El Paso, September 12. The average date for the first killing frost at Santa Fe was October 19; at Denver, October 4. The average precipitation for September at Santa Fe is 1.52 inches; at Denver .84 of an inch; at El Paso 1.32 inches. The greatest monthly precipitation for September at Santa Fe was 4.96 inches in 1902; at Denver, 3.70 inches in 1902; at El Paso, 3.68 inches in 1884. The least monthly precipitation in Santa Fe and Denver was a trace in 1892; at El Paso, .04 of an inch in 1879. The greatest daily precipitation at Santa Fe was 1.70 inches on September 27 and 28, 1893; at El Paso, 2.07 inches on September 18 and 19, 1883. The average number of clear days was 17 at Santa Fe; 16 at Denver; 16 at El Paso. The number of partly cloudy days was 10 at Santa Fe; 11 at Denver; 10 at El Paso. The number of cloudy days was 3 in Santa Fe and Denver, and 4 in El Paso. The prevailing winds in Santa Fe were from the southeast; in Denver from the south; in El Paso, from the east. The average hourly velocity at Santa Fe was 5.8 miles; at Denver, 6.4 miles; at El Paso, 9 miles. The highest velocity was 46 miles per hour at Santa Fe on September 13, 1889; 50 miles per hour at Denver on September 21, 1901; 51 miles per hour at El Paso on the same date. Summed up: Denver has 3 days 7 degrees hotter than the hottest

September day at Santa Fe, and El Paso 10 degrees hotter, and yet killing frosts come to Denver two weeks earlier than they do to Santa Fe. The wind attains a higher velocity at Denver and El Paso, then at Santa Fe, and this city averages one more clear day in September than does Denver or El Paso. Yet, for every health seeker that comes to Santa Fe for climate, a score go to El Paso and a hundred to Denver.

CALL FOR REPUBLICAN TERRITORIAL CONVENTION

Meeting Will be Held in Albuquerque Beginning at Ten O'clock Monday, September 12.

A delegate convention of the Republican voters of New Mexico is hereby called to meet in the City of Albuquerque at 10 o'clock on the morning of Monday, the 12th day of September, 1904, for the purpose of placing in nomination a candidate for delegate from New Mexico to the 59th Congress of the United States, and to transact such other business as may properly come before said convention.

The Republican electors of this Territory and all those who believe in the principles of the Republican party and in its policies as announced in the National Republican platform adopted by the Republican National Convention held in the City of Chicago, June 21st, 1904, and who believe in a fair and just administration of public affairs in this Territory are respectfully and cordially asked to unite under this call and to take part in the selection of delegates to the Territorial Convention.

The several counties will be entitled to representation as follows:

Counties.	Delegates.
Bernalillo	18
Chaves	2
Colfax	10
Dona Ana	8
Eddy	2
Grant	2
Lincoln	4
Leonard Wood	5
Luna	2
McKinley	3
Mora	8
Otero	5
Quay	2
Rio Arriba	12
Roosevelt	2
San Juan	2
Sandoval	8
Santa Fe	11
San Miguel	19
Sierra	3
Socorro	10
Taos	8
Union	5
Valencia	15

Alternates will not be recognized. Proxies will only be recognized if held by citizens of the same county from which the delegates giving the proxies are elected.

County committeemen (or members of the Territorial Committee, in which there is no county committee), are hereby directed to name the place, date and hour, when and where precinct primaries shall be held in conformity with this call, and give due notice of at least seven days in some newspaper of general circulation published in the county, and cause to be posted notices in at least three public places in each precinct, stating the date the county convention will be held, the name of the precinct chairman, place, date and the hour the primaries will be held.

County conventions must be held on or before the 10th day of September, 1904, and county committees, or in the absence of county committees, the Territorial committeemen for said counties will take proper action and call county conventions at such time and places as they deem best, on or before that date.

Chairmen and secretaries of county conventions are earnestly directed to forward true notice of the proceedings of said county conventions and of the names of said delegates as may be elected to the Territorial Convention by the next mail after the holding of such convention, addressing same to Chairman Territorial Republican Central Committee, Albuquerque, New Mexico.

FRANK A. HUBBELL, Chairman Territorial Republican Central Committee.

J. J. SHERIDAN, Secretary.

Albuquerque, August 22, 1904.

BUCKLEN'S ARNICA SALVE. Has world-wide fame for marvelous cures. It surpasses any other salve, lotion, ointment or balm for cuts, corns, burns, boils, sores, felons, ulcers, tetters, salt rheum, fever sores, chapped hands, skin eruptions; infallible for piles. Cure guaranteed. Only 25c at Fischer Drug Company, Santa Fe.

LOW RATES TO COLORADO. Via Santa Fe. Denver and return \$22.55, Colorado Springs \$19.55. Pueblo, \$17.55, on sale daily, good to return until October 31. Call on Santa Fe agents.

H. S. LUTZ, Agent, Santa Fe.

Cough Remedy. I have sold Chamberlain's Cough Remedy for more than twenty years and it has given entire satisfaction. I have sold a pile of it and can recommend it highly.—Joseph McElhinney, Linton, Iowa. You will find this remedy a good friend when troubled with a cough or cold. It always affords quick relief and is pleasant to take. For sale by all druggists.

Emergency Medicines. It is a great convenience to have at hand reliable remedies for use in cases of accident and for slight injuries and ailments. A good liniment and one that is becoming a favorite if not a household necessity is Chamberlain's Pain Balm. By applying it promptly to a cut, bruise or burn it allays the pain and causes the injury to heal in about one-third the time usually required, and as it is an antiseptic it prevents any danger of blood poisoning. When Pain Balm is kept at hand a sprain may be treated before inflammation sets in, which insures a quick recovery. For sale by all druggists.

TRIENNIAL CONCLAVE KNIGHT TEMPLARS.

September 5th to 9th, 1904. Sovereign Grand Lodge, Independent Order of Odd Fellows. September 19th-25th, 1904, San Francisco, California.

For this occasion the Santa Fe will sell tickets to San Francisco or Los Angeles and return at a rate of \$38.45 from Santa Fe. Your choice of routes going one way, returning via another. Tickets will be on sale August 16th to September 11th, inclusive. For further particulars apply to Santa Fe agents.

H. S. LUTZ, Agent, Santa Fe, N. M.

What is Life? In the last analysis nobody knows, but we do know that it is under strict law. Abuse that law even slightly, pain results. Irregular living means derangement of the organs, resulting in constipation, headache or liver trouble. Dr. King's New Life Pills quickly readjusts this. It's gentle, yet thorough. Only 25c. at Fischer Drug Co., Santa Fe

IMPORTANT.

The Santa Fe Central now has on sale round trip tickets for \$15, good for return until September 30, to Cloudcroft, New Mexico, the most famous summer resort in the southwest. For further information apply to B. W. Robbins, G. P. A., Santa Fe Central Railway, Santa Fe, N. M.

The finest dinner in the city at the Bon Ton.

NEW MEXICO TERRITORIAL FAIR.

Albuquerque, N. M. Oct. 10th-15th, 1904. For this occasion the Santa Fe will sell tickets to Albuquerque and return from all points between Denver and El Paso Texas. The rate from Santa Fe will be \$2.65 for the round trip, dates of sale October 9th to 14th inclusive, good for return limit until Oct. 17th, 1904.

H. S. Lutz, Agent.

SUMMER EXCURSION RATE.

St. Paul and Minneapolis, Minn., via "Santa Fe." Special excursion tickets will be sold from Santa Fe to above named points at a rate of \$39.55. For particulars call on any agent of the Santa Fe.

H. S. LUTZ, Agent, Santa Fe, N. M.

D. & R. G. SYSTEM, Santa Fe Branch. TIME TABLE.

East Bound	West Bound
No. 435.	Miles No. 435
5:30 p. m. Ar. Santa Fe. Lv. 9:00 a. m.	8:00 a. m. Ar. Santa Fe. Lv. 9:00 a. m.
6:40 a. m. Ar. Albuquerque. Lv. 10:30 a. m.	10:30 a. m. Ar. Albuquerque. Lv. 10:30 a. m.
8:00 p. m. Ar. Santa Fe. Lv. 8:00 p. m.	8:00 p. m. Ar. Santa Fe. Lv. 8:00 p. m.

Trains stop at Embudo for dinner where good meals are served.

CONNECTIONS.

At Antonio for Durango, Silverton and intermediate points. At Alamosa for Denver, Pueblo and intermediate points via either the standard gauge line via La Veta Pass or the narrow gauge via Salida, making the entire trip in day light and passing through the FAMOUS ROYAL GORGE, also for all points on Creede branch.

At Salida for all points west. At Denver, Pueblo and Colorado Springs for all points east.

For further information, sleeping car reservations time cards, literature, etc., call on or address:

F. H. McBRIDE, Agent, Santa Fe, N. M.

3 K. HOOPER, G. P. A., Denver, Colo.

Santa Fe Central Rail'y TIME TABLE Effective Sunday, August 23, 1904.

South Bound	Stations.	Alt.	North Bound
No. 1	Mi.		No. 2
7:15 a. m.	Ar. Santa Fe. Lv. 7:00 a. m.		7:00 a. m.
7:35 a. m.	Donnellana	6,000	7:20 a. m.
8:10 a. m.	Yoga Blanca	6,000	8:00 a. m.
8:30 a. m.	Kenney	6,000	8:20 a. m.
9:00 a. m.	Clark	6,100	9:00 a. m.
9:55 a. m.	Stanley	6,375	9:55 a. m.
10:05 a. m.	Moriarty	6,300	10:05 a. m.
11:00 a. m.	Moitosh	6,175	11:00 a. m.
11:30 a. m.	Estancia	6,140	11:30 a. m.
12:50 p. m.	Willard	6,135	12:50 p. m.
1:35 p. m.	Progresso	6,210	1:35 p. m.
1:50 p. m.	Blanco	6,235	1:50 p. m.
2:50 p. m.	Ar. Torrance. Lv. 6,475	10:45 a.	

Connecting at Santa Fe, N. M., with the Denver & Rio Grande R. R. for all points in Colorado, Utah, Idaho, Montana, Washington and the Great Northwest.

Connecting at Torrance, N. M., with the El Paso-Northeastern System for Kansas City, Chicago, St. Louis and all points east and for El Paso, Texas and all points in Southern New Mexico, Arizona and the Republic of Mexico.

Connecting at Kennedy, N. M., for points east and west of the Atchafalaya, Topeka & Santa Fe Railway.

For rates and information address

A. B. GRIMSHAW, General Passenger Agent, Santa Fe, N. M.

1904 September, 1904

Sun	Mon	Tues	Wed	Thur	Fri	Sat
				1	2	3
4	5	6	7	8	9	10
11	12	13	14	15	16	17
18	19	20	21	22	23	24
25	26	27	28	29	30	

INFORMATION BUREAU OF THE WORLD'S FAIR.

A St. Louis World's fair information bureau has been established at 336 Seventeenth street, Denver, in charge of Phil P. Hitchcock, where information will be cheerfully furnished.

It will pay you to advertise. Try it.

SOCIETIES.

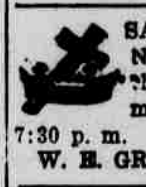
Masonic.



MONTEZUMA LODGE No. 1, A. F. and A. M.—Regular communication first Monday in each month at Masonic Hall at 7:30 p. m. S. SPITZ, W. M. F. P. CRICHTON, Secretary.



SANTA FE CHAPTER No. 1, R. A. M.—Regular convocation second Monday in each month at Masonic Hall at 7:30 p. m. W. E. GRIFFIN, H. P. ARTHUR SELIGMAN, Secretary.



SANTA FE COMMANDERY No. 1, K. T.—Regular convocation fourth Monday in each month at Masonic Hall at 7:30 p. m. W. R. PRICE, E. C. W. E. GRIFFIN, Recorder.

K. OF P.

SANTA FE LODGE NO. 2, KNIGHTS OF PYTHIAS—Regular meeting every Tuesday evening at 8 o'clock Castle Hall, corner of Don Gaspar Avenue and Water Street. Visiting Knights given a cordial welcome. JOHN L. ZIMMERMANN, C. C. JOHN K. STAUFFER, K. R. S. R. H. BOWLER, Master of Finance.

I. O. O. F.

SANTA FE LODGE NO. 2, I. O. O. F. Meets every Friday evening in Odd Fellows Hall, San Francisco street. Visiting brothers welcome. GEO. W. KNAEBEL, N. M. A. P. HOGLE, Secretary.

B. P. O. ELKS.

SANTA FE LODGE No. 460, B. P. O. E. Holds its regular session on the second and fourth Wednesdays of each month. Visiting brothers are invited and welcome. A. L. MORRISON, JR., E. R. A. J. FISCHER, Secretary.

IMPROVED ORDER RED MEN.

Santa Fe Tribe No. 5, I. O. R. M. Meets every Thursday eve at Odd Fellows hall at 8 o'clock. Visiting chiefs cordially invited. C. L. BISHOP, Sachem. A. P. HOGLE, Chief of Records.

SANTA FE LODGE NO. 259, FRATERNAL UNION OF AMERICA—Regular meetings first and third Mondays in each month at 8 o'clock p. m., Knights of Pythias Hall, Don Gaspar Avenue. Visiting fraters welcome. J. S. CANDELARIO, P. J. MARTIN, Fraternal Master. Secretary, H. S. LUTZ, Treasurer.

All legal blanks at the New Mexican.

Santa Fe Filigree and Jewelry Manufacturing Co.

Gold & Silver Filigree

N. Mondragon, Mgr.

Laughlin Building, Don Gaspar Avenue.

MUTUAL BUILDING & LOAN ASSOCIATION

Will assist you to Own Your Own Home! Be your own landlord. Pay your rent into the Building & Loan Association and thus pay for your home.

The Association has on hand money to loan on desirable property.

For particulars call on or address the secretary.

R. J. CRICHTON, GRIFFIN BLOCK, SANTA FE, N. M.

Full Particulars Santa Fe Ticket Offices
H. S. LUTZ Agent

GOOD NEWS FOR YOU!!



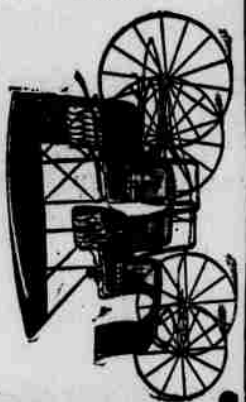
THE FARMER'S FRIEND
The pride of the family—our new STUDEBAKER.

A Wagon's First Cost
There are plenty of low priced wagons (mighty dear in the end), that actually look well—at first sight. But they are made of defective axle-wood, or of the same material, but of inferior quality, and constant repairs, that will rise up to trouble you in time. All said and done, it pays to buy once for all a dependable wagon.

STUDEBAKER WAGONS
That is a matter of common knowledge—testified to by every man who ever bought one. Built on honor by master mechanics out of selected and perfectly seasoned materials. Definite, sterling worth in each job of Vehicles and Harness, that result in longer and better service than you have a right to expect. You don't make mistakes if you pin your faith there.

Studebakers in Your Town.
The undersigned are the local sales agents. We carry a generous stock, and will order and quickly put anything you want. You see the Studebaker is a safe investment. Always ready to show you. Give us a call.

Santa Fe Hardware & Supply Co.,
Santa Fe, N. M.



Buy a SAMSON WINDMILL and Irrigate Your Land. Don't Depend on Rain.

OFFICIAL MATTERS

Postoffice Re-Established.
The postoffice at Punta, Valencia County, has been re-established. It will be served from Manzano, three miles to the northwest. Reyes Sanchez de Romero has been appointed postmaster at Punta, Valencia County.

Position Abolished.
The position of supervising teacher of the Pueblo Indians in New Mexico has been abolished. Miss M. E. Disette, of this city, has held this position for several years. The duties will now devolve upon the superintendent of the U. S. Industrial Schools at Santa Fe and Albuquerque.

Articles of Incorporation.
The charter of the Sater Copper Company has been amended by striking out the paragraph which gives the principal place of business of the concern as Columbus, Ohio, and changing the same to Pittsburg, Pennsylvania. The operations of the company are carried on in Union County, New Mexico.

The Aztec Hardware and Lumber Company. The incorporators are James C. Gilbreath, Herbert Gilbreath and Henry Abrams, all of Monte Vista. The objects of the concern are: To purchase and sell at wholesale and retail lumber, hardware, building materials and other furniture and farm products. The capital stock of the company is \$20,000, divided into 200 shares of the par value of \$100 each. The term of existence of the corporation is 50 years. The number of directors are three, and those who will manage the affairs of the concern for the first three months of its existence are: Henry D. Abrams, James C. Gilbreath and Herbert Gilbreath. The principal place of business is Aztec.

The E. L. Washburn Company. The incorporators are Elmer L. Washburn, Eva J. Washburn and Charles O. Cushman, of Albuquerque. The object and purposes of the concern are to carry on and conduct a general merchandise and clothing business in the city of Albuquerque, and to deal in all kinds of wearing apparel and articles necessary and usually handled in conducting a business of such character, and to buy and sell the same, either at wholesale or retail. The capital stock of the company is \$30,000, divided into sixty shares of a par value of \$500 each. The term of existence is 49 years. The principal place of business is Albuquerque, and the number of directors to manage the affairs of the concern will be three, those for the first three months: E. L. Washburn, Eva J. Washburn and Charles O. Cushman.

Delegates to Tuberculosis Congress.
Governor Otero today appointed the following delegates to represent the Territory at the American International Congress of Tuberculosis which will be held under the auspices of the Universal Exposition at St. Louis, October 3 to 5: James A. Massie, M. D., Santa Fe; J. M. Diaz, M. D., Santa Fe; W. R. Tipton, M. D., Las Vegas; B. D. Black, M. D., Las Vegas; John F. Pearce, M. D., Albuquerque; C. H. Connor, M. D., Albuquerque; P. M. Carrington, M. D., Fort Stanton; F. A. Bushnell, M. D., Fort Bayard; T. P. Martin, M. D., Taos; Samuel D. Swope, M. D., Deming; J. J. Shuler, M. D., Raton; Geo. C. Bryan, M. D., Alamogordo; W. T. Joyner, M. D., Roswell; L. O. Fullen, Carlsbad; E. W. Hurlbert, Lincoln.

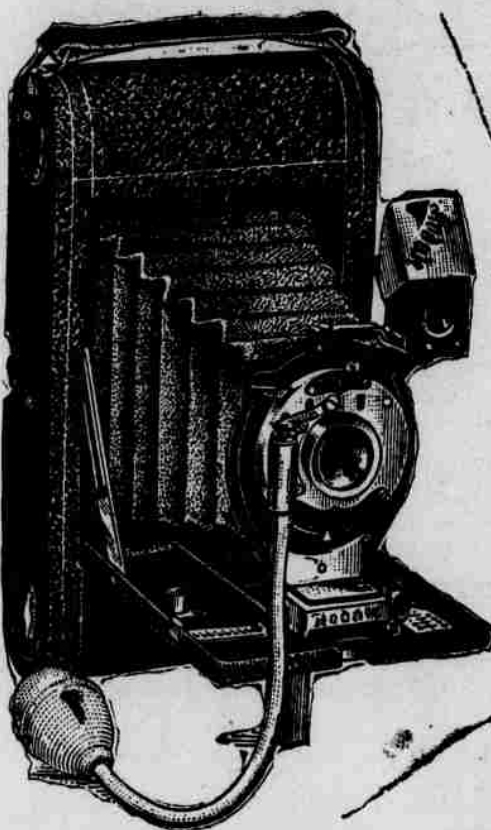
The Jemez Land Company. The incorporators are: Alonzo B. McMillan and Herbert F. Reynolds of Albuquerque, and Eugene A. Fiske of Santa Fe. The objects of the concern are: To acquire, hold, lease, improve, and sell timber, farming, grazing, mineral and other lands and the products thereof; to build, construct, maintain and operate plants and works for the development of said lands; to manufacture lumber and other wood materials; to mine or otherwise extract or remove coal, copper, sulphur, stone and other minerals and timber; to construct bridges, buildings, machinery, roads, and other means of transportation; to build and construct dams, reservoirs, canals, ditches and pipe lines for storing water, developing power and generating electricity and conducting and supplying water for irrigation, mining, manufacturing, domestic and other purposes; to develop electricity for power, heating, lighting and other purposes; to sell, furnish, supply, lease or convey electricity for power, lighting, or heating purposes; and to build and maintain proper means and appliances for the distribution of electricity for the above purposes; to acquire, hold and sell water and water rights and all other kinds of real and personal property. The capital stock of the company is \$100,000 and the number of shares is 100,000, of the par value of \$1 each. The time of the existence of the corporation is 50 years. The number of directors shall not be less than three and not more than five, as may be determined from time to time by the stockholders and those who will manage the affairs of the corporation for the first three months are: Alonzo B. McMillan and Herbert F. Reynolds of Albuquerque, and Eugene A. Fiske of Santa Fe. The principal place of business is Albuquerque. The Roswell Electric Light Company. The incorporators are: Edward A. Cahoon of Roswell and Alonzo B. McMillan and William R. Whitney of Albuquerque. The objects of the company are: To generate electricity for power, heating and lighting purposes and to do all things necessary to maintain and equip such plants. The capital stock of the company is \$50,000, divided into 2,500 shares of a

Going to the Fair?

Take a **KODAK** With You

SEE OUR WINDOW DISPLAY

All Styles and Prices, from \$1 to \$35
ALL KINDS OF SUPPLIES



No. 3 A. Folding Pocket Kodak, \$20.00.

FISCHER DRUG CO.

230 San Francisco Street : Santa Fe, N. M.

Exceedingly Popular
PRICES ARE PREVAILING AT
John Koury's
NEW -- CASH -- STORE

BEAUTIFUL WHITE CHINA SILK WAISTS,
Daintily made. Lace-trimmed. Just the thing to wear with the new style separate skirts!

See the new stock of **COLLARS**, silk and linen, handsomely embroidered. Look over the display at our Store before you decide on your purchase : : :

We carry the finest **SHOES** in the country, made by the largest and best house in America, that's the Brown Shoe Co. Men's, Ladies', Boys', Girls' and Children's.

* PRICES TO SUIT ANYBODY *
COME AND SEE US * GIVE US A TRIAL

Catron Block, East Side Plaza.

Extra Cleaned

KENTUCKY BLUE GRASS SEED

By planting it now, you will have the roots well started for next spring. Now is the time, Do it now!!

W. H. GOEBEL
The Hardware Dealer

CATRON BLOCK, NO. 311. SANTA FE, N. M.

par value of \$100 each. The time of existence is 50 years. The number of directors shall not be less than three and not more than five. Those who will have charge of the affairs of the company for the first three months of its existence are: Edward A. Cahoon of Roswell and William R. Whitney and Alonzo B. McMillan of Albuquerque. The principal place of business is in Roswell, Chaves County, but the corporation may maintain its office either in Roswell or Albuquerque as may from time to time be determined by the board of directors.

OPERA HOUSE
A. M. DETTELBACH, Mgr.

The Largest Hall in the City for
Balls
Parties
Private and
Public Entertainments
Conventions, Etc., Etc., Etc.

Seating Capacity, 450
Large Stage

For terms apply to
A. M. Dettelbach,
Box Hancock St. Santa Fe, N. M.

A. B. CRAYCRAFT,
PHOTOGRAPHER
Makes this suggestion to you.
Come and see me if you want the finest
PHOTOS AND VIEWS
Ever made in the city
MY SPECIALTY IS TO PLEASE YOU!
Developing and Finishing
Kodak Work to Order : :
Plaza Studio

My mamma told me
That she would buy me
Some of those fine oysters
That have arrived at Bon Ton.

WANTS
AND MISCELLANEOUS ADS

Dear Frank: I will be ready this evening to get some of those delicious oysters that have just arrived at the Bon Ton. Your Bell.

FOR SALE—Fine sheep ranch. If interested, call on or address Andrew Forbes, Saguache, Colo.

FOR SALE—Choice grain fed chickens, killed and dressed to your order. Also, strictly fresh eggs, sweet cream, and fresh buttermilk. S. R. Hinckley, 113 Johnson St.

WANTED—Clean cotton rags, New Mexican office. Cash paid for same.

FOR RENT—Two new six-room cottages, stationary range, bath and toilet. Apply to Geo. E. Ellis, Claire Hotel.

The season is now open for oysters, and we have them. Bon Ton.

Everything neat and clean at the Bon Ton.

FOR RENT—Furnished double house of 3 rooms each. Apply to Santa Fe Meat and Live Stock Co.

FURNISHED ROOMS FOR RENT—A few comfortably furnished rooms with use of bath. Apply at Claire Hotel.

FOR RENT—Elks' Hall, formerly Adam's Hall for balls, parties and all other public and private use. Apply to George E. Ellis, trustee.

FOR RENT—Elegantly furnished rooms. Also, rooms for light house-keeping, furnished, good well water, good surroundings. Inquire 114 Cerillos Street, South Side.

WANTED—For the U. S. army: able bodied, unmarried men, between ages of 21 and 35; citizens of United States of good character and temperate habits, who can speak, read and write, English. For information apply to recruiting officer, 250 San Francisco Street, Santa Fe, New Mexico.

The Bon Ton restaurant received today a large consignment of fine fresh oysters. This is the first shipment in the city this season, and a great treat is in store for lovers of this article.

The New Mexican prints the news.

GOLD'S OLD CURIOSITY SHOP



CLOSING OUT SALE!

Wishing to retire from business I will sell my entire stock of
INDIAN and MEXICAN BLANKETS, POTTERY BASKETS, DRAWN WORK, CURIOS, ETC.

At less than Cost.

TOURISTS:

Do you know that you miss half of Santa Fe if you do not visit our Curio Store & Free Museum.

Sign of the Old Cart Send for Catalogue
Cor. San Francisco Street and Burro Alley.