

8-12-1904

## Santa Fe New Mexican, 08-12-1904

New Mexican Printing Company

Follow this and additional works at: [https://digitalrepository.unm.edu/sfnm\\_news](https://digitalrepository.unm.edu/sfnm_news)

---

### Recommended Citation

New Mexican Printing Company. "Santa Fe New Mexican, 08-12-1904." (1904). [https://digitalrepository.unm.edu/sfnm\\_news/2035](https://digitalrepository.unm.edu/sfnm_news/2035)

This Newspaper is brought to you for free and open access by the New Mexico Historical Newspapers at UNM Digital Repository. It has been accepted for inclusion in Santa Fe New Mexican, 1883-1913 by an authorized administrator of UNM Digital Repository. For more information, please contact [disc@unm.edu](mailto:disc@unm.edu).



# SANTA FE NEW MEXICAN

VOL. 41.

SANTA FE, N. M., FRIDAY, AUGUST 12, 1904.

NO. 148.

## MIGHTY GOOD ADVICE

Germany Will Tell Turkey That  
It Better Heed Uncle  
Sam's Wishes.

## NAVAL DEMONSTRATION

The Sick Man of the Bosphorus Seems  
Worried About the Aggressiveness  
of the United States.

Berlin, Aug. 12.—Official circles here think it probable that Turkey will ask Germany's advice regarding the situation created by the American naval demonstration off Smyrna. Answering the direct question of a correspondent of the Associated Press as to what Germany would do in such case, the foreign office answered that it would advise Turkey at once to satisfy the demands of the United States.

## EIGHT HOUR DAY FOR PRINTERS

The Local Unions Will Be Asked to  
Vote on the Proposition Which  
is to Go Into Effect in 1906.

St. Louis, Aug. 12.—The convention of the International Typographical Union today concurred in the report of the committee on the eight hour day law, which advocates the adoption for the light hour law and fixes January 1, 1906, as the time when such law should be effective or a strike declared. The question is left to the subordinate lodges for a final decision on a referendum vote.

## A GOOD WOMAN CALLED HOME

Mrs. Onofre Ortiz de Read Died Early  
This Morning at Her Home on  
South Side.

Mrs. Onofre de Read, wife of Attorney Benjamin M. Read, passed away this morning at one o'clock at her home on Metropolitan Avenue, after a prolonged illness. Her death was due to dysentery, superinduced by cancer. Mrs. Read underwent an operation in Las Vegas in November, 1902, for the removal of the cancer. Several weeks ago, while out of the city, Mr. Read was suddenly summoned to Santa Fe by a telegram announcing that the condition of his wife was serious. From that time she slowly failed. Her death at this time, however, came as a shock to her husband, her children, and friends, for it was generally understood that there was a very noticeable improvement early in the week. Mrs. Read was one of the most highly educated, refined women of Santa Fe. She spoke the English and Spanish languages fluently. She was an artist of considerable note, and her paintings have attracted attention in distant cities. Mrs. Read was also a talented musician. She received her education under the Sisters of Loreto at the Loreto Academy here, and at Mora. She was a native of Santa Fe and was aged 42 years, two months and one day. When a girl, she accompanied her parents, Mr. and Mrs. Rafael Ortiz y Chavez to Mora, where they made their home for some time. The deceased is survived by her husband, four brothers, Amado, Palemon, Emilio, and Elias Ortiz y Chavez, and one sister, Mrs. Aurelia Ortiz y Chavez. There are also three stepdaughters, Mrs. J. P. Delgado, and Misses Emilia and Candida Read. Mr. and Mrs. Read were united in marriage on April 12, 1893, the ceremony being performed in Mora. The funeral services will be held on Sunday morning, after which the remains will be interred in Rosario Catholic cemetery. A short service will previously be held at her house.

## VILLANUEVA IN A CRITICAL CONDITION.

Fernando Villanueva, the young man who was badly stabbed this week in a quarrel at La Cueva, Mora County, was brought to Las Vegas Wednesday for treatment. He was accompanied by Dr. M. F. Desmarais. The overland trip weakened him considerably, and the chances for his recovery are very slight.

## Administrators Appointed.

A session of the probate court was held on August 9 and the following business was transacted: H. S. Kaune was appointed administrator of William Dodge, late of Santa Fe, and Mrs. Antonia Tapia de Becker was appointed administrator of the estate of Secundina Tapia.

## OFFICIAL MATTERS

**Notaries Public Appointed.**  
The following notaries public have been appointed by Governor Otero: Irene Peter, of Lincoln, Lincoln County, and Joseph J. Behr, of La Cueva, Mora County.

**Public Funds Received.**  
The following public funds were received today by Territorial Treasurer J. H. Vaughn: From J. W. Fleming, treasurer and collector of Grant County, taxes for 1902, \$72.40; taxes for 1903, \$274.85. From W. G. Black, treasurer and collector of San Juan County, taxes for 1903, \$736.74.

**Tecolote Land Grant Taxes.**  
Under the head of Unknown Land Grants in the assessment roll of San Miguel County, T. B. Cairn, of Santa Fe, as an owner of an undivided interest in the Tecolote grant, a tract of land situated at the place called Tecolote in San Miguel County, and which was granted to Salvador Mirrita and others, and confirmed by the Congress of the United States as a private land claim and approved on June 21, 1890, has returned the property for assessment in accordance with the law in order that the same may be assessed and taxed against the unknown owners, he not being the owner of the whole, but of only an undivided interest. The value of the property is given at \$10,000 and the taxes amount to \$365.

## Pumping Experiments in Rio Grande Valley.

Delegate Rodey is in receipt of the following note from Prof. Elwood Mead, Chief of the Irrigation Division of the Department of Agriculture, who recently made a trip to Las Cruces to look after the work being done by the Agricultural College in that regard. Mr. Rodey missed him at the depot, although he called at two different trains to see him. It is good news for the people of the Valley, and shows that great interest is being taken in the matter of pumping.

"Dear Mr. Rodey:  
The train schedule was such that I missed the early train and was delayed by a washout on the later one. I asked some of your friends who were on the train to explain the circumstances to you.

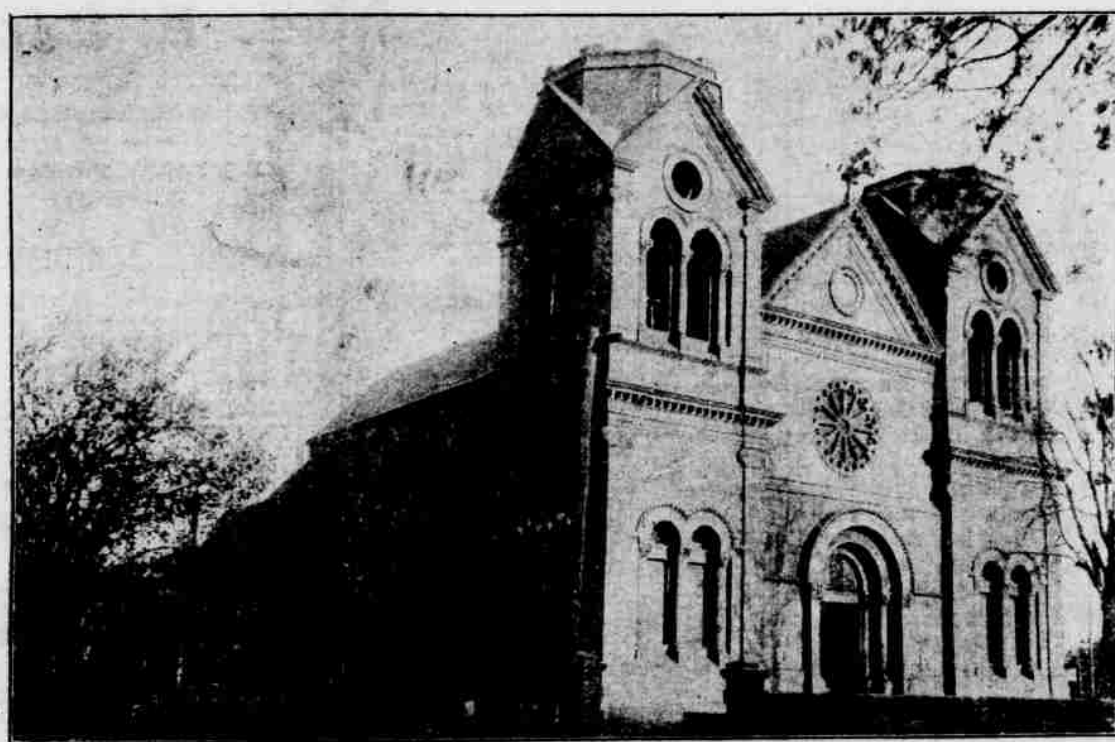
"We are arranging to extend our pumping studies to include the whole Valley of the Rio Grande from Albuquerque south. I'll write you about it fully when I can get a stenographer.  
Sincerely yours,  
"ELWOOD MEAD,  
Chief Irrigation Investigations.  
Hon. B. S. Rodey, M. C.,  
Albuquerque, N. M."

## Incorporations.

The following articles of incorporation were today filed in the office of the Secretary of the Territory: The Seward Cash Store Company, with principal place of business in Tres Piedras, Taos County. The incorporators are Charles S. Seward, Joseph P. Rinker and Emma L. Seward. The object of the association is to buy, sell, and exchange, deal in and to operate and carry on a general merchandise business at one or more places, and buy, sell, lease, rent, exchange, mortgage, and incur all kinds and classes of land and real estate and the improvements of such land or real estate or interest therein and to buy, sell, exchange and incur any and all products thereof, and to carry on a general real estate business; to erect, establish, buy, sell, exchange, lease, rent, operate and incur any and all kinds and classes of industrial manufacturing plant or plants and to operate, conduct and carry on and transact any and all kinds of manufacturing business or businesses, to locate and equip by purchase or otherwise, bond, sell, lease, and operate any and all mines and mining properties and any interest therein or title thereto; and to buy, sell, locate, exchange, lease, rent and deal in minerals, ores, stones, brick, coal of all kinds and descriptions; and to carry on and conduct and operate a general mining and coal business; to erect, maintain, buy, sell, rent, lease and incur and deal in buildings of all classes and descriptions and to carry on a general real estate business; to buy, sell, exchange, incur, and deal in horses, mules, sheep, cattle and other live stock and wool, hides, pelts and the product of the live stock business; and to erect, buy, sell, lease, rent, maintain and operate a scouring mill or scouring mills; to buy, sell, lease, exchange, incur, manufacture and deal in timber, lumber and all products thereof; and to buy, sell, lease rent and operate saw mills and other appliances necessary in and about the manufacture and dealing in said timber and lumber and to carry on a general timber and lumber business; to purchase, sell, lease, rent, build and operate, maintain and incur steam, electric, and gravitation railroad and railway lines and telegraph and telephone lines, poles, wires and other appliances connected therewith; to effect, buy, sell, rent and incur pipe lines, ditches, dams, and reservoirs for the storage of water;

Continued on Page Eight.

## Scenic New Mexico.



THE CATHEDRAL AT SANTA FE.

## RUSSIAN FLEET WAS SCATTERED

Two Cruisers and a Torpedo Boat  
Destroyer Gain Kiao Chou Bay and  
Five Warships Steamed Back to  
Port Arthur—Japanese Boats Sustained no Damage.

Dispatches from various points today indicate that the attempt of the Russian Port Arthur squadron to reach Vladivostok has failed, and that the fleet is widely scattered. The Japanese system of communication has heretofore been so perfect that there can be little doubt that the government is thoroughly informed of the position of the various vessels of the escaped fleet and will be able either to drive them into neutral ports or to attack them with overwhelming force.

**A Japanese Version.**  
London, Aug. 12.—A dispatch to the Japanese legation from Tokio says that according to reports received up to the present, the Russian squadron emerging from Port Arthur was attacked by our fleet south of Yentao and dispersed. The Askold, Novik and another cruiser and a destroyer took refuge at Kiao Chou. Another destroyer took refuge at Che Foo. On August 11th, five Russian battleships and several torpedo boat destroyers seemed to regain Port Arthur. Our fleet is believed to be undamaged.

**The Russians Thwarted.**  
Che Foo, Aug. 12.—The report that two Russian cruisers and one torpedo boat destroyer had entered the Port of Tsing-Tan, Kiao Chou bay, last night, is confirmed. The cruisers are the Askold and the Diana. Two Russian torpedo boats are said to have been captured on the Chinese coast. It is believed that the attempt of the Russian ships at Port Arthur to join the Vladivostok squadron has been thwarted.

**Alexieff Tells Belated News.**  
St. Petersburg, Aug. 12.—The emperor has received the following dispatch from Viceroy Alexieff dated August 11th: "According to a report from the commandant at Port Arthur, the squadron put to sea on August 10. The following vessels were on the horizon, three first-class cruisers, eight small cruisers and seventeen torpedo boats. The port has been bombarded with siege guns for the past four days.

**Russian Ships Must Leave Kiao Chou Bay.**  
Berlin, Aug. 12.—The foreign office confirms the arrival last night at Tsing Chou, at the entrance of Kiao Chou bay, the German concession on Shang Tung peninsula, of the Russian battleship Czarovitch (not the protected cruiser Askold), the protected cruiser Novik, and an unnamed torpedo boat. The Czarovitch is in unseaworthy condition, having been damaged in Wednesday's fight. The foreign office is sending instructions today to the German authorities at Tsing Chou to the effect that the Novik and the torpedo boat must leave the harbor within the twenty-four hours prescribed by international law.

**Russian Boats Heading South.**  
Shang Hai, Aug. 12.—A Russian torpedo boat destroyer arrived here today. It is reported that four Russian battle-

ships are off Saddle Island, about seventy miles southeast of this port. Accused of Violating International Law.

**Movement of German Cruisers.**  
Berlin, Aug. 12.—Vice Admiral Von Prittwitz, commanding the German East Asiatic squadron, telegraphs the navy department that he sailed today from Che Foo on board of the armored cruiser Fuerst Bismarck for Tsing Chou. The German cruiser Seeadler has sailed from Ching Wantao for Tsing Chou.

**Russia Protests.**  
St. Petersburg, Aug. 12.—The Associated Press is able to announce that Russia has already formally protested to Japan through France against the action of the Japanese torpedo boat destroyers in attacking a Russian torpedo boat at Che Foo and towing her away from that port, and that the protest has been communicated to the powers.

## Russian Ships in Neutral Harbor Must Disarm.

Berlin, Aug. 12.—The foreign office it is understood, will take no further action in regard to the Russian warships leaving Sing Chou until Admiral Von Prittwitz arrives at Kiao Chou and reports the situation. It is suggested by one in authority that if the Russian ships refuse to depart, they will be required to disarm.

**Captain Shestakovsky Saved.**  
Che Foo, Aug. 12.—Captain Shestakovsky, of the Ryeshitelni, who was wounded in the leg by a bullet, was saved by boats from the Chinese cruiser Sai Yung.

**Getting Comfort Out of Setback.**  
St. Petersburg, Aug. 12.—The emperor has just received a long telegram from Kai Chou, which is now being deciphered. The latest news that four battleships are off Shanghai is received with satisfaction at the admiralty as indicating that the bulk of the squadron has escaped. The telegram to the emperor contains an official account of the sea fight.

**St. Petersburg Reports Jap Cruiser Sunk.**  
London, Aug. 12.—A dispatch from St. Petersburg says that the Japanese armored cruiser Kasuga was sunk with all on board during the engagement off Port Arthur on Wednesday last.

## HEIR TO THE RUSSIAN THRONE

The Czarina Gave Birth to a Son This  
Afternoon at the Peterhof Palace.  
State Ceremonials.

St. Petersburg, Aug. 12 2:15 p. m.—A son and heir to the Russian throne was born at two this afternoon. The Empress and child are doing well. The emperor and empress were married on November 14, 1894, and previous to the son born today, have had four daughters.

The child will be christened Alexis. The birth of the heir was attended with all the ceremonial ordained by imperial tradition. In accordance with the Russian law, there were present besides the emperor, Baron Fredericks, master of ceremonies; Prince Dolgorouky, grand marshal of the court; Dr. Rott and Dr. Hirsch. Dr. Rott personally announced the birth of an heir to the waiting imperial family. A formal announcement will be made in the Official Messenger. The imperial salute of 101 guns was subsequently fired, first at Peterhof and then repeated by all the forts around St. Petersburg.

## MOB LAW MUST CEASE

No More Whitecapping is to be  
Tolerated in the Cripple  
Creek District.

## PROCLAMATION ISSUED

The Substantial Men of That Section  
are Backing the Sheriff in  
His Efforts.

Cripple Creek, Aug. 12.—The district is quiet today and it is believed that the proclamation issued by Sheriff Bell last night will have the effect of putting an end to whitecapping. In his proclamation, which was also signed by the mayors of Victor and of Cripple Creek, the sheriff declares that mob law must cease. The substantial men of the district are backing up the sheriff, and it is not thought that any one else will be run out of the district.

## NEW MEXICO, THE LAND OF SUNSHINE

A Neat and Well Written Pamphlet  
Issued by the Passenger Department  
of the Rock Island  
System.

The passenger department of the Rock Island System, of which John Sebastian is the well-known and efficient manager, has issued a striking sixty-page pamphlet entitled "New Mexico, the Land of Sunshine," which must be a delight to every lover of New Mexico. It is one of the best written and most cleverly compiled of the many railroad advertising pamphlets which are being circulated today to attract settlers or tourist traffic, and that it will fulfill this aim to a profitable extent is certain. The brochure is nicely illustrated with half-tone cuts and a railroad map of eastern New Mexico, which lacks but one point of being complete, and that is that the Santa Fe Central Railway is given no place on it, and therefore it does not show the direct connection that Santa Fe possesses with the Rock Island, a very material error, for the pamphlet devotes some space to the attractions of the Capital City. Although issued specifically to advertise eastern New Mexico, it is descriptive of the entire territory, much of the information being derived from publications of the Bureau of Immigration. The pamphlet has an artistic cover and can be secured by application to the passenger department of the Rock Island.

What can be more delicious and inviting to a perusal of the pamphlet than this introduction to the first chapter entitled "A Bit of History?" "To begin at the beginning of all history would be to go back to that misty time 'when the world was new and the rocks were wet,' for does not the birth-record which great nature keeps show New Mexico to be one of the oldest of Earth Children? Did not her mountain peaks, reared amid the travail of a forming continent, send greeting to their sisters as they rose above the waters of the hoarse Silurian sea? Is it not true, too, that the Southwest of which New Mexico is the center, was the cradle of the race? Is it not true that evidence is accumulating to show that here in this sunny land, man lived and wrought, tilled the soil, tended flocks, and built cities long before Noah set sail in his rudderless boat, or Adam opened his horticultural experiment station in the valley of the Euphrates? Let those who deem America without a past and think antiquity synonymous with the East, go to New Mexico and stand amid the ruins of the Seven Cities of Cibola. There in that land of mystery slumber the 'sheeted dead' of a thousand generations; there among the crumbling walls still stands the ghostly past awaiting a newer day and a completer civilization.

"All this is interesting, but tradition and fancy and even history are valueless except as they serve to illuminate the hard facts of the present. It is worth knowing, however that New Mexico, the last of our vast territorial limits to be exploited and subdued, was the first to be occupied by the forces of modern civilization, and furthermore, that it was the chosen home of a primal race. The natural conclusion from such facts is that a country which possesses the crude elements necessary to evolve a civilization such as the Spanish invaders found and destroyed, must and will pay large dividends upon modern enterprise."

The volume is a little classic and can well serve as a model to publications of similar purport and scope.



# SANTA FE NEW MEXICAN

THE NEW MEXICAN PRINTING COMPANY, PUBLISHERS.

MAX. FROST, Editor  
PAUL A. F. WALTER, Manager and Associate Editor.  
PERCY F. KNIGHT, Secretary and Treasurer.

Entered as Second Class matter at the Santa Fe Postoffice.

The New Mexican is the oldest newspaper in New Mexico. It is sent to every postoffice in the Territory, and has a large and growing circulation among the intelligent and progressive people of the Southwest.

RATES OF SUBSCRIPTION.	
Daily, per week, by carrier.....	25
Daily, per month, by carrier.....	\$1.00
Daily, per month, by mail.....	75
Daily, one year by mail.....	7.50
By six months, by mail.....	4.00
By three months, by mail.....	2.00
Weekly, per year.....	2.00
Weekly, six months.....	1.00
Weekly, per quarter.....	.75
Weekly, per month.....	.25



"I DO NOT UNDERSTAND YOU NEW MEXICO PEOPLE! NONE OF YOU SHOULD BE WILLING TO ACCEPT JOINT STATEHOOD, AS YOU WILL GET SINGLE STATEHOOD JUST AS SOON AS JOINT STATEHOOD. MAKE YOUR FIGHT ON THE SINGLE STATEHOOD LINE; I WILL HELP YOU HERE AND IN WASHINGTON!" REMARKS OF AN INFLUENTIAL MEMBER OF THE COMMITTEE ON RESOLUTIONS IN THE CHICAGO REPUBLICAN CONVENTION. THIS MAN HOLDS ONE OF THE MOST IMPORTANT PUBLIC POSITIONS IN HIS STATE AND IS PROMINENT AND STRONG IN THE NATION'S CAPITAL.

## GRAZING ON THE PUBLIC DOMAIN AND FOREST RESERVATIONS.

During the meeting held last week in Denver between the commission of federal officials appointed by President Roosevelt and delegates from the various live stock associations in the Rocky Mountain states and territories the questions of the grazing of live stock on the public domain and of the transfer of forest reservations from the Department of the Interior to the Department of Agriculture were fully and thoroughly discussed. The commission will submit a report on these matters to President Roosevelt and its recommendations will likely be laid before Congress for action. The Denver Republican in discussing the results of the meeting says that the resolution of the members of the National Live Stock Association recommending that the Department of Agriculture be empowered to classify the public lands and determine the conditions at present governing the use of grazing areas, and also the one suggesting that the power to create and administer forest reservations be vested in the Department of Agriculture will receive the approval of a large majority of western people.

The vacant public lands are now under the Department of the Interior, including the administration of forest reservations. Possibly the officials of that department will oppose any effort to make the proposed transfer of authority. No attempt will be made, however, to take from the Interior Department the authority to sell or otherwise permanently dispose of such lands. All its authority would be maintained in that particular.

The reason for suggesting that the Department of Agriculture be given control of forest reservations is that it is better equipped than any other department to do that work. The Bureau of Forestry is under the Department of Agriculture, and it has, of course, much to do with the preservation of forests on public lands.

Should both these recommendations be adopted, the Agricultural Department would be able to exclude from forest reservations lands that should be thrown open to the public for grazing. It would also be authorized to grant permits to live stock growers to run their flocks or herds within the limits of such reservations. In short, everything pertaining to the use of vacant public lands for grazing, whether within or outside of reservations, would come under the jurisdiction of the Department of Agriculture. The deep interest which Secretary Wilson takes in everything affecting the welfare of the farmers and stock growers would insure just treatment to all persons engaged in those industries in the Far West, while at the same time the care of the forests would be entrusted to competent officials, fully equipped for work of that kind.

Democratic newspapers in New York and Chicago are still making light of the fact that the Chicago Chronicle has thrown Democratic policies and candidates overboard and is now advocating the Republican party principles and the election of the Republican National ticket. Despite this, the Chronicle is doing excellent work for the Republican party. It all counts.

## RUSSIANS IN A BAD PLIGHT.

Part of the Russian fleet at Port Arthur, according to recent dispatches, has escaped and has gone to join the squadron at Vladivostok. Admiral Skrydloff will have a formidable array of battleships and cruisers when the ships from Port Arthur join him. He has a great reputation as a daring and a successful naval commander in Russia and will have a chance to show his mettle. Right here, it is well to remark that Admiral Togo, in charge of the blockading squadron for Port Arthur, denies the above report from St. Petersburg and it seems that the situation of the Russian fleet there is about as desperate as was the plight of Admiral Cervera and his Spanish fleet in Santiago harbor six years ago. The Tokio authorities claim that should the Russian vessels endeavor to escape they will be overtaken and destroyed as were Cervera's cruisers on coming out of Santiago harbor. So far the naval situation in the Far East is still very favorable to the Japanese.

General Kuroki seems to have followed the plan laid out by Moltke and the Prussian generals in the Franco-Prussian war of 1870. General Kuroki's position is like that of Bazaine at Metz during that memorable struggle with the exception that he has no great fortress to fall back upon. From the numerous war dispatches from both sides it may be judged that the Japanese armies will succeed in surrounding Kuroki's forces, will cut their lines of communications, sever them from their base of supplies and that within a short time. The valor and fighting abilities of the Russian soldiers are very apparent and are still there, but there seems to be no general or commanding officer who has the brain, the experience, the tactical knowledge or the strategic ability to cope with the Japanese commanding generals and the forces commanded by them. In all human probability Russia will receive a lesson in this war which will last it for many years.

## OTERO'S FINANCIAL ADMINISTRATION.

In a recent issue the Raton Range views the contrast between the financial administration under Governor Otero and the Democratic regime, concisely, briefly and very correctly in an editorial, which is based upon facts and actualities. The Range says:

"Just how the Democrats of New Mexico can attack Governor Otero's administration for an extravagant one is hard to see. They certainly are not consistent, but Democracy on a gold basis isn't very consistent anyway. Nor do they give people credit for having very good memories. Who is there that keeps track of our affairs at all who has forgotten the only two Democratic administrations in years—those of Thornton and Ross? What an heritage of debt they left for Otero and the Republicans to face! A shortage in both administrations. Funds misused, finances mismanaged and accounts juggled. Should a Democrat succeed Governor Otero there would be money in the territorial treasury to turn over, a lowered rate of taxation to face, a reduction of bonded debt and a perfect system of accounting for public funds. What honest Democrat can gainsay this, or explain away the conditions that prevailed at the close of the last Democratic administration? Governor Otero's administration has certainly been a success from the financial standpoint, and the less the Democrats have to say on that subject the better for their own record, which smells to heaven."

## TELL THE TRUTH.

"It is joint statehood or territorial vassalage for New Mexico and Arizona."—Albuquerque Citizen.

The above is nonsensical trash and should not have the least weight with sensible and patriotic citizens of the Territory. Even under this "state of vassalage" for many years the people of New Mexico have done fairly well and if the truth must be told there are many of them who prefer no statehood to joint statehood. Should it be necessary, the New Mexican will give the joint statehood boomers the exact conditions as they exist in the Territory on this question. This paper is not afraid of this fight and if the joint statehood boomers want it, they will in all likelihood get more than they bargain for.

King Edward of England is rapidly acquiring the reputation of a great monarch and a very successful diplomat. Still he seems to have time to attend to small things. In alluding to this, the Chicago Chronicle says King Edward is a famous diplomat and peacemaker among the nations, but no one must think for a moment that because he is great in great affairs he is small in small affairs. It is a considerable descent from an arbitration treaty with Germany to a crease in a pair of trousers, yet the king has now introduced trousers with four creases in each leg, making it as square as a box. The only important question involved in this matter is whether they would not look better octagon shaped.

Ex-U. S. Senator Pettigrew of South Dakota has been employed by Chairman Tom Taggart to stump that state for the Democrats. Pettigrew is like Webster Davis, a sore head Republican. In South Dakota, however, he cannot do much harm to the Republican cause. He is too well known.



## Growing Old

Ought not to mean growing weak and feeble. It does not mean weakness or feebleness for those who eat with good appetite and sound digestion. It is of the utmost importance that old people should retain the power to digest and assimilate food which is the sole source of physical strength. When age brings feebleness it is generally because of the failure to assimilate the nutrition contained in food.

Dr. Pierce's Golden Medical Discovery cures diseases of the stomach and other organs of digestion and enables the perfect digestion and assimilation of food. It invigorates the liver and promotes general physical well being.

"It is with gratitude we acknowledge what Dr. Pierce's medicine has done for grandmother's good, in fact it has cured her," writes Miss Carrie Ranker, of Perryburg, Ohio. "She had been doctored with several physicians but found no relief until Dr. Pierce advised her what to do. She has taken only three bottles of 'Golden Medical Discovery' and is entirely well. She suffered with pain in kidneys, bladder and liver for ten years, and her limbs were swelled with dropsy so bad she could hardly walk. My grandmother's name is Mrs. Caroline Hennen, her age is 71 years. I will gladly answer all letters of inquiry."

Sick people are invited to consult Dr. R. V. Pierce by letter, free. All correspondence is held as strictly private and sacredly confidential.

Dr. Pierce's Pleasant Pellets regulate the bowels.

"The New Mexican is giving Chairman F. A. Hubbell of the Territorial National Committee copious advice which no doubt he will take when he returns from his sheep ranch."—Albuquerque Citizen.

Well why should not the New Mexican give Chairman Hubbell copious advice? Is the chairman too big? Is it a crime on the part of the New Mexican which does yeoman work for the Republican party day in and day out to do so? If the esteemed Albuquerque Citizen will enlighten this paper upon this matter, the New Mexican will be greatly obliged.

Although Russia had no intention of doing so, nevertheless that country is observing its treaty stipulations to evacuate Manchuria. To be sure, Kuroki and other Japanese generals with their armies are helping the Russians to keep their treaty stipulations. It is nevertheless encouraging to see the latter country abiding by them to some degree.

A Democratic yellow sheet publishes the report that charges have been filed against two of the judges of the Supreme Court of this Territory and that charges against two others are being prepared. This would be important, were there the least foundation for the report.

The decision of the Republican National Committee to make an active campaign in Indiana and others of the Middle states is all right. While all of them are considered safely Republican, still it will be good policy to look after Chairman Tom Taggart who is "Tough and devilish sly" in his own section.

One of the British cruisers in the Red Sea is named Venus while one of the Russian torpedo boat destroyers cruising about there is called Cupid. When Venus gets after this particular Cupid that little fellow will have to "scurry" or Venus as in the days of yore will spank him.

The beginning of the end is apparent in the siege of Port Arthur. Under the circumstances, that fortress cannot hold out much longer. The Russians have made a brave defense of it, but the Japanese have been still more brave in their operations against the fort.

Within the last two days that St. Petersburg correspondent has refrained from sending the news that the Russians have killed 10,000 Japanese per day, for a week. Evidently he is learning something of the true state of affairs in Manchuria.

The report that "General Kuropatkin has retired" has been very frequent of late and they are believing it now, even in St. Petersburg. Persistency in retiring seems to be characteristic of General Kuropatkin's military operations.

Chairman Taggart is hard at work organizing his check-book club. The first member who joined it was Uncle Henry Gassaway Davis and it is said his checks looked beautiful to the chairman.

This year's encampment of the New Mexico National Guard is a good commencement. The practice of going into camp should be kept up. It will prove of benefit to the National Guard and to the people.

A citizen of Indiana has just named a baby daughter "Gassaway." He must be a rip roaring Davis man!

For bargains in all kinds of railway travel call at the Santa Fe city ticket office.

Good eating at the Bon Ton.

# THE OXFORD CLUB

Has on hand a constant supply of the finest brands of WINES, LIQUORS AND CIGARS All the Popular Games.

SAN FRANCISCO ST., SANTA FE, N. M.

J. E. Lacome, Proprietor.

R. J. PALEN, President.

J. H. VAUGHN, Cashier.

HENRY L. WALDO, Vice President.

## THE FIRST NATIONAL BANK

SANTA FE, NEW MEXICO

United States Designated Depository.

Renovated and Refurbished Throughout.

Cuisine and Table Service Unexcelled.

## The Palace Hotel

WILLIAM VAUGHN, PROP.

Large Sample Rooms for Commercial Men.

Santa Fe . . . . . New Mexico

## "STRONGEST IN THE WORLD." THE EQUITABLE LIFE ASSURANCE SOCIETY OF THE UNITED STATES.

HENRY B. HYDE, Founder.

### FREEDOM

From worry about your future—if you live!

### INDEPENDENCE

From want for your family—if you die!

An adequate Endowment in the EQUITABLE gives both

Take out your policy now. Delays are dangerous.

JAMES W. ALEXANDER, President.  
JAMES H. HYDE, Vice-President.  
EDWARD GRUNSFELD, Manager,  
Albuquerque, N. M.  
MRS. L. A. HARVEY, Agent,  
102 Chapelle St., Santa Fe, N. M.

## A. P. HOGLE

## Undertaker and Funeral Director

GALISTEO STREET

Best of Reference Given as an EMBALMER. Night Calls

RESIDENCE PHONE 141.

## Table Wines!

AT "OUR PLACE"

Will Be Found a Full Line of Table Wines for Family Trade.

Orders by Telephone Will Be Promptly Filled

W. R. PRICE, Prop. Santa Fe, N. M.

## P. F. HANLEY

DEALER IN

## Fine Wines, Liquors & Cigars

Imported and Native Wines for Family Use.

OUR SPECIALTIES—Old Crow, McBrayer, Guckenheimer, Rye, Taylor and Paxton, Old Jordan and Monogram, Ky., Whiskies.

SAN FRANCISCO STREET

SANTA FE, N. M.

## PROFESSIONAL CARDS.

Attorneys at Law.

MAX. FROST, Attorney at Law.  
Santa Fe : : : : New Mexico

EDWARD L. BARTLETT, Lawyer, Santa Fe, New Mexico. Office in the Capitol.

RICHARD H. HANNA, Attorney at Law,  
Phone 66. Offices Griffin Block.

EUGENE A. FISKE, Attorney and Counselor at Law,  
Santa Fe, N. M.  
Supreme and District Court Practice

BENJAMIN M. READ, Attorney at Law,  
Santa Fe, N. M.  
Office Sena Block. Palace Ave.

WILLIAM H. H. LLEWELLYN, Attorney at Law,  
Las Cruces, New Mexico,  
District Attorney for Dona Ana, Otero, Grant, Luna and Sierra Counties,  
Third Judicial District.

CHAS. F. BASLEY, (Late Surveyor General.)  
Attorney at Law, Santa Fe, N. M.  
Land and mining business a specialty.

E. C. ABBOTT, Attorney at Law,  
Practices in the District and Supreme Courts. Prompt and careful attention given to all business.  
District Attorney for the Counties of Santa Fe, Rio Arriba, Taos and San Juan. Santa Fe, N. M.

EDWARD C. WADE, Attorney at Law,  
Practices in all the courts.  
"Mining cases and mineral patents a specialty."  
LAS CRUCES, NEW MEXICO.

FRANK W. CLANCY, Attorney at Law,  
(District Attorney 2d Judicial District.)  
Practices in the District Courts and the Supreme Court of the Territory, also before the United States Supreme Court in Washington.  
ALBUQUERQUE - - NEW MEXICO.

A. B. RENNEHAN, Attorney at Law,  
Practices in the Supreme and District Court, Mining and Land Law a specialty. Rooms 8 and 9, Sena Building, Palace Avenue, Santa Fe, N. M.

## OSTEOPATHY

DR. CHARLES A. WHEELON, Osteopath.  
No. 105 Palace Avenue.  
Successfully treats acute and chronic diseases without drugs or medicines.  
No Charge for Consultation.  
Hours: 9-12 m., 2-5 p. m. Phone 156

## DENTISTS

DR. C. N. LORD,  
Office, Kahn Block, over Spitz' Jewelry Store, South Side of Plaza.

C. O. HARRISON, D. D. S.,  
Office: Over Fischer's Drug Store.  
On the Plaza.  
(Successor to Dr. Manley.)

## Civil Engineers & Surveyors

JAY TURLEY,  
Civil Engineer and Surveyor,  
Irrigation Work a Specialty.  
U. S. Deputy Mineral Surveyor.  
Santa Fe, N. M.

## Stenography & Typewriting.

LEW H. BLAKE,  
Stenography and Typewriting.  
Notary Public.  
135 Palace Avenue, Santa Fe, N. M.  
Calls promptly answered.  
Office Phone 76. Residence Phone 151  
NOTARY PUBLIC, STENOGRAPHER AND TYPEWRITER. TRANSLATIONS  
From Spanish into English and from English into Spanish carefully made.  
Office West Side of Plaza.  
FRANCISCO DELGADO,  
Santa Fe, N. M.

## ARCHITECTS

HOLT & HOLT,  
Architects and Civil Engineers.  
Maps and surveys made, buildings and construction work of all kinds planned and superintended. Office, Montoya Building, Plaza, Las Vegas. Phone 94.





# WANTS

## AND MISCELLANEOUS ADS

**FOR SALE**—Fine sheep ranch. If interested, call on or address Andrew Forbes, Saguache, Colo.

**FURNISHED ROOMS FOR RENT**—A few comfortably furnished rooms with use of bath. Apply at Claire Hotel.

**FOR RENT**—Elks' Hall, formerly Adam's Hall for balls, parties and all other public and private use. Apply to George E. Ellis, trustee.

**FOR RENT**—Elegantly furnished rooms. Also, rooms for light house-keeping, furnished, good well water, good surroundings. Inquire 114 Cerillos Street, South Side.

**HANNA INSURANCE AGENCY**, Writes Fire, Life and Accident Insurance. Phone 66. Offices Griffin Block.

**WANTED**—A girl to do general housework in a small family. Good comfortable position for the right kind of a girl. Apply New Mexican Printing Company.

I find nothing better for liver derangement and constipation than Chamberlain's Stomach and Liver Tablets.—L. F. Andrews, Des Moines, Iowa. For sale by all druggists.

**WANTED**—For the U. S. army: able bodied, unmarried men, between ages of 21 and 35; citizens of United States of good character and temperate habits, who can speak, read and write, English. For information apply to recruiting officer, 250 San Francisco Street, Santa Fe, New Mexico.

**WANTED**—Special representatives in this country and adjoining territories, to represent and advertise an old established business house of solid financial standing. Salary \$21 weekly, with Expenses advanced each Monday by check direct from headquarters. Horse and buggy furnished when necessary; position permanent. Address Blew Bros. & Co., Dept. A, Monon Bldg, Chicago, Ill.

**IMPORTANT.** The Santa Fe Central now has on sale round trip tickets for \$15, good for return until September 30, to Cloudcroft, New Mexico, the most famous summer resort in the southwest. For further information apply to B. W. Robbins, G. P. A., Santa Fe Central Railway, Santa Fe, N. M.

Money's Digest to New Mexico Supreme Court Decisions for sale by the New Mexican Printing Company.

## THE CHAS. WAGNER FURNITURE CO

WE LEAD IN EVERYTHING.

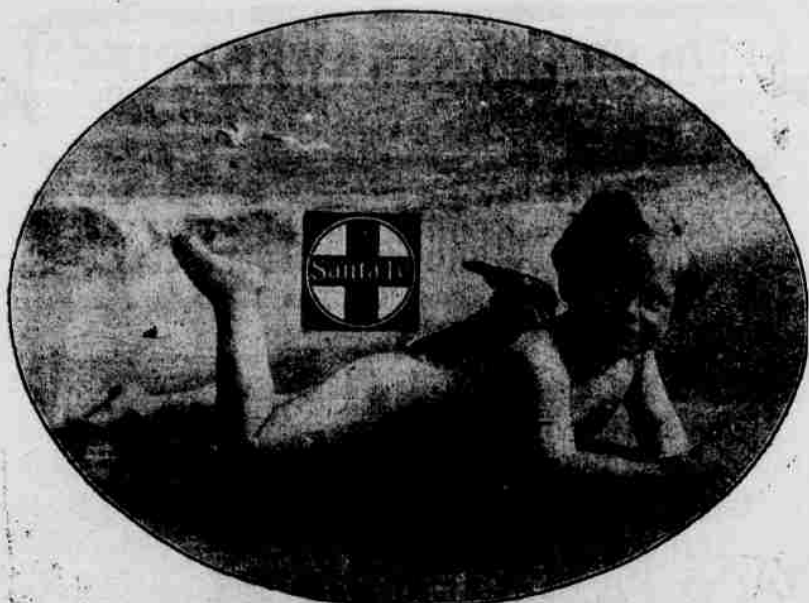
China-ware, Glassware, Picture Frames and Mouldings, Stoves and Ranges, Frames Made to Order, Goods Sold on Easy Payments



**CHARLES WAGNER**  
"Licensed Embalmer,"

Telephone 10. San Francisco Street.  
Night Calls Answered from residence—Telephone No. 2.

## CORONADO TENT CITY



"RIGHT UP TO NOW"

Go West to the Ocean This Summer  
GO TO CORONADO TENT CITY

Coronado Tent City is the wonder of the Pacific Coast. The climate is perfect, the Camp is healthful, the tents are comfortable, and there is plenty to eat. There are a great many other attractions at Coronado, and along the line of the Santa Fe, tickets are on sale Tuesdays, Thursdays and Saturdays, round trip from Santa Fe, \$41.90. For further particulars see Santa Fe agents.

**Santa Fe All the Way**

W. R. Brown, D. & P. A.,  
El Paso, Tex.

H. S. Lutz, Agent,  
Santa Fe, N. M.

## ARE YOU SATISFIED?

If Not, What Better Proof Can Santa Fe Residents Ask For?  
This is the statement of a Santa Fe citizen.  
The testimony of a neighbor.  
You can readily investigate it.  
The proof should convince you.  
Manuel B. Delgado, county clerk, says: "During the four or five years I was subject to attacks of backache I knew the cause came from some disturbed action of the kidneys but I did not know how to stop it although I tried more than one highly recommended medicine guaranteed to cure such symptoms. An attack was annoying me just before I went to Ireland's Pharmacy for Doan's Kidney Pills. It was perhaps not as aggravated as some in the past for I had been laid up unable to work for a week at a time but be that as it may the treatment with Doan's Kidney Pills radically disposed of the said attack."  
For sale by all dealers; price 50 cents a box. Foster-Milburn Co., Buffalo, N. Y., sole agents for the United States.  
Remember the name—Doan's—and take no other.

**A FREE RAILROAD RIDE FOR YOU.**  
The Earth is a new illustrated monthly journal, describing the Great Southwest. Its publishers generously offer nearly \$3,000 worth of free railroad rides for the best photos of southwestern scenes, and the best letters about that region written by residents thereof.  
Why don't you enter this friendly contest? Write today to The Earth, 1118 Railway Exchange, Chicago, and learn full particulars.

## BIENNIAL ENCAMPMENT KNIGHTS OF PYTHIAS.

August 16th to 29th.  
For this occasion the Santa Fe will sell tickets to Louisville and return at a rate of \$46.35 from Santa Fe, dates of sale, August 12, 13, 14 and 15, tickets good to return until September 15, 1904.  
H. S. LUTZ,  
Agent, Santa Fe, N. M.

The Wabash Railroad has just issued a handsome illustrated World's Fair pamphlet containing a three color map of St. Louis and the fair grounds and half tone views of the principal buildings. A copy free upon request. P. P. Hitchcock, G. A. P. D., Denver, Colorado.

## Can You Sleep?

If not, and you are growing nervous, despondent and run-down, you need Palmo Tablets. They induce natural slumber, build up the nervous system, and make you feel and look years younger. 50 cents. Book Free.

At Ireland's Pharmacy.

## MINES AND MILLS

### GRANT COUNTY.

The Key Mine at Pinos Altos is again in operation with a small force which is to be increased soon.

### LINCOLN COUNTY.

Minor D. Gaylord has made a strike at the 125 foot level of the Tangle Mine at Nogal, which runs \$92,400 to the ton in gold at spots. The entire vein is eighteen feet in thickness and the rich ore is contained in a chimney. The rich ore is to be sacked and sent to Chicago for treatment. As soon as the strike was made, heavy doors were placed at the shaft and the mine is being carefully guarded.

In the White Mountains of New Mexico there is a mining camp that, little as it has been known of for many years is now coming to the front and promises to be a great camp in the not far distant future, says one of the New Mexican's exchanges.

This camp is located on the Bonito creek in the White Mountains and is about twelve miles southwest of Capitlan. It was known to mining men a number of years ago, but, owing to the fact that, while a great many good leads were discovered, it was remote from the railroads, nothing was ever done until about the beginning of the present year, when J. L. Wiggins, an old time miner of Colorado and Oklahoma, went into the camp and organized the Pittsburg Ore Reduction Company, which is going ahead with the development of the camp and spending a large sum of money in the camp.

George L. Dillard, of the company, in speaking of the camp says:

"The camp on the Bonito, to my notion, has the making of one of the best in the southwest. There is a mineralized country there of about 150 square miles to work on and some of the lands are as good as any in the country."

"Our company now has, by actual purchase or bond and lease twenty-three claims which are being developed. On one of these claims, which was recently secured from the Ottawa Mining Company, at Ottawa, Kansas, there is now a shaft about two hundred feet in depth and about four hundred feet of drifting, which is showing up some fine ore bodies. Our best ore body is found in the Crow mine, at a depth of about eighty feet, where we have a seven-foot vein of ore averaging about seventeen dollars in gold, silver and lead values."

"Our company is now putting in a fifty-ton concentrating plant with a power plant for fifty tons more, which will be added to as needed. This mill we expect to have in operation about the first of September and we now have between two and three thousand tons of ore on the dump to make tests with. The ore is of very fine grade and has been sorted from the ores from the different workings. The chief draw back to the ores of the camp is the percentage of lead and zinc which they carry. In sending ore to the smelter for treatment, if the ore carries over five per cent of zinc, the smelter cannot treat the consignment and to overcome this difficulty we have secured the same style of jigs that has proved successful in separating the lead and zinc ores of the Joplin district of Missouri."

"We expect to be able to concentrate about five tons of ore into one ton, with an average valuation of one hundred dollars per ton for concentrates. The concentrates will be sent to the El Paso Smelting works for treatment, while the zinc will be sent to the zinc smelters in the north."

"Our experience in that section has been that as depth has been secured the vein matter has also become larger. So far, however, owing to the absence of steam hoists and pump we have been unable to go below the water level, which has been struck at two hundred feet. We are now putting in steam pumps and hoists and will soon be able to overcome that difficulty."

"In addition to our company about the only work that is being done in the camp is that of the Eagle Mining Company, which now is putting in a mill at Parsons for the treatment of low grade, free milling gold ore. This mill has a capacity of sixty tons per day. The company also has a twenty stamp mill on the ground, but this will not be placed in operation at the present time. This company owns a number of claims that contain large deposits of free milling ore. The ore is of low grade, generally speaking, although some very rich pockets are encountered, but the vein matter is large and the company will be able to work at a good profit."

"Both companies have all the wood and water on hand they need to operate the mines and plant. We now have a saw mill which cuts the lumber for the buildings and the timber for the mines. The refuse from the saw mill we will use to make steam for the power plant and in this way we will be able to get very cheap power."

## LOW RATES TO COLORADO.

Via Santa Fe.  
Denver and return \$22.55, Colorado Springs \$19.55. Pueblo, \$17.55, on sale daily, good to return until October 31. Call on Santa Fe agents.

H. S. LUTZ,  
Agent, Santa Fe.

Reduced rates from all points all the time to Cloudcroft. "Ask the ticket agent."

**HELVETIA**  
MILK CONDENSING CO.  
ORIGINATORS OF EVAPORATED CREAM

**Economy Brand Evaporated Cream**

always bears the above cap label. It means the same as telling you that we back up its purity with a \$5,000 guarantee.  
Made by the largest producers of Evaporated Cream in the world.

## Taken With Cramps.

Wm. Kirmse, a member of the bridge gang working near Littleport was taken suddenly ill Thursday night with cramps and a kind of cholera. His case was so severe that he had to have the members of the crew wait upon him and Mr. Gifford was called and consulted. He told them he had a medicine in the form of Chamberlain's Colic, Cholera and Diarrhoea Remedy that he thought would help him out and accordingly several doses were administered with the result that the fellow was able to be around next day. The incident speaks quite highly of Mr. Gifford's medicines.—Elkader, Iowa, Argus. This remedy never fails. Keep it in your home, it may save life. For sale by all druggists.

The finest dinner in the city at the Bon Ton.

## PUTS AN END TO IT ALL.

A grievous wall oftentimes comes as a result of unbearable pain from over taxed organs. Dizziness, backache, liver complaint and constipation. But thanks to Dr. King's New Life Pills they put an end to it all. They are gentle but thorough. Try them. Only 25c. and guaranteed by Fischer Drug Co.

## TRIENNIAL CONCLAVE KNIGHT TEMPLARS.

September 5th to 9th, 1904.  
Sovereign Grand Lodge, Independent Order of Odd Fellows.  
September 19th-25th, 1904, San Francisco, California.

For this occasion the Santa Fe will sell tickets to San Francisco or Los Angeles and return at a rate of \$38.45 from Santa Fe. Your choice of routes going one way, returning via another. Tickets will be on sale August 16th to September 11th, inclusive. For further particulars apply to Santa Fe agents.

H. S. LUTZ,  
Agent, Santa Fe, N. M.

## Violent Attack of Diarrhoea Cured By Chamberlain's Colic, Cholera and Diarrhoea Remedy and Perhaps a Life Saved.

"A short time ago I was taken with a violent attack of diarrhoea and believed I would have died if I had not gotten relief," says John J. Patton, a leading citizen of Patton, Ala. "A friend recommended Chamberlain's Colic, Cholera and Diarrhoea Remedy. I bought a twenty-five cent bottle and after taking three doses of it was entirely cured. I consider it the best remedy in the world for bowel complaints. For sale by all druggists."

## END OF BITTER FIGHT.

"Two physicians had a long and stubborn fight with an abscess on my right lung," writes J. F. Hughes of Dupont, Ga., "and gave me up. Everybody thought my time had come. As a last resort I tried Dr. King's New Discovery for Consumption. The benefit I received was striking and I was on my feet in a few days. Now I've entirely regained my health." It conquers all coughs, colds and throat and lung troubles. Guaranteed by Fischer Drug Company. Price 50c. and \$1.00 Trial bottles free.

## SUMMER EXCURSION RATE.

St. Paul and Minneapolis, Minn., via "Santa Fe."  
Special excursion tickets will be sold from Santa Fe to above named points at a rate of \$39.55. For particulars call on any agent of the Santa Fe.  
H. S. LUTZ, Agent, Santa Fe, N. M.

## SUICIDE PREVENTED.

The startling announcement that a preventive of suicide has been discovered will interest many. A run down system, or despondency invariably precede suicide and something has been found that will prevent that condition which makes suicide likely. At the first thought of self destruction take Electric Bitters. It being a great tonic and nerve will strengthen the nerves and build up the system. It's also a great stomach, liver and kidney regulator. Only 50c. Satisfaction guaranteed by Fischer Drug Co.

## EL PASO ROUTE Texas & Pacific Railway



"No trouble to answer questions"

**TAKE THE NIGHT EXPRESS FAST TRAIN**  
**NEW SCHEDULE NEW EQUIPMENT**

Leaves El Paso Daily at 6:50 p. m. Mountain Time.

This handsome solid vestibuled train runs through to New Orleans, Shreveport and St. Louis without change. Carries through sleepers Los Angeles to Chicago and intermediate points. Direct connections made for all points North, East and Southeast. For schedules, rates and other information call on or address,

R. W. CURTIS

Southwestern Passenger Agent  
EL PASO, TEXAS

L. G. LEONARD  
Travelling Passenger Agent  
EL PASO, TEXAS

E. P. TURNER  
Gen. Passenger and Ticket Agent  
DALLAS, TEXAS

## G. A. R. NATIONAL ENCAMPMENT

Boston, August 15-20, 1904.

Round-trip from Santa Fe, N. M., will be \$58.80. Tickets on sale August 11 to 13, inclusive. Unusual inducements for those who use the Santa Fe.

## WHY NOT GO?

You can return via New York and St. Louis, seeing the greatest city in America and the grandest World's Fair ever held

**\$38.45**

## California and Return

The 29th Triennial Conclave, Knights Templar U. S. A., and Sovereign Grand Lodge I. O. O. F., at San Francisco in September, are the next occasions for which the Santa Fe will make reduced rates to California. Any one, whether member or not, may take advantage of the reduction. If you're going to make the California tour, this is your chance to do it economically, comfortably, and thoroughly. On sale August 15 to Sept. 11, inclusive. Limited to October 23.

For full particulars address the undersigned.  
Descriptive Literature Free.

H. S. LUTZ, Ticket Agent, A., T. & S. F. Ry. Co.,  
SANTA FE, N. M.

**Santa Fe Central Railway**

**EL PASO  
CHICAGO,  
DENVER,  
SALT LAKE CITY.**

## THE SHORT LINE OF NEW MEXICO

NEW EQUIPMENT • PROMPT SERVICE

CONNECTING AT SANTA FE, N. M., with the Denver & Rio Grande Railroad for Denver, Colorado Springs, Pueblo, Trinidad and all points in Colorado, Utah, Idaho, Montana and the Great Northwest.

CONNECTING AT TORRANCE, N. M., with the El Paso-Northeastern System for El Paso, Texas, and all points in Southern New Mexico, Arizona, Texas and the Republic of Mexico. Also for Kansas City, St. Louis, Chicago and all points east via the Rock Island system.

THE SANTA FE CENTRAL is the Short Line between Santa Fe and El Paso, Texas, Alamogordo, Carrizozo, Santa Rosa, Tucuman, N. M., Dalhart, Texas, and all other points on the El Paso-Northeastern System.

For freight and passenger rates, and other information regarding the Santa Fe Central Railway and the country through which it operates, call on or address

B. W. ROBBINS, G. F. & P. A., SANTA FE, N. M.





## Time for Broken Prices! NOW'S THE TIME

At this season of the year Broken Prices prevail throughout our store and now is the time to buy your Dress Goods, in wash goods or woollens, Ladies' Shirt Waists, Muslin Underwear, Silk Skirts, Ladies' Petticoats and a whole lot of other goods in connection.

### YOU ARE THE GAINER!

We will make a life long customer of you by giving you these unusual values. If you know the firm and know it is reliable, don't stop to question the why and whereof of a bargain, but hustle and

### GET THE CREAM OF THE SELECTION!

Anything that you buy here in a hurry you can return at your leisure and get your money, if the goods disappoint you in any way whatever.

**SALMON & ABOUSLEMAN,**

249, 252 and 253 San Francisco St.

## S. SPITZ

### DIAMONDS

WATCHES, CLOCKS,  
SILVERWARE, ETC.

### JEWELRY

Manufacturer of  
**MEXICAN FILIGREE JEWELRY.**

ALL KINDS OF DESIGNS IN  
Filigree Fob Chains,  
Filigree Neck Chains,  
Filigree Souvenir Spoons,  
Filigree Brooch Pins,  
Filigree Bracelets,  
Filigree Card Cases,

South Side Plaza - Santa Fe

## ST. MICHAEL'S COLLEGE

Santa Fe, New Mexico.



THE 46TH YEAR BEGINS SEP. 1, 1904.

The College is empowered by law to issue FIRST-CLASS TEACHERS' CERTIFICATES to its Graduates, which Certificates are to be honored by School Directors in the Territory of New Mexico.

**BROTHER BOTULPH, President.**

## REMINGTON TYPEWRITERS

NEW MEXICAN PRINTING CO., Dealers,  
Santa Fe New Mexico

## The Hallack Paint

Covers Most Surface,  
Wears Longest

## Standard for Quality

and is Made Solely to Resist  
the Peculiar Atmospheric  
Action of this Dry Climate.

For Sale by **THE**

**W. A. McKENZIE Hardware Store.**

## PERSONAL MENTION

Hon. T. B. Catron was in Cerrillos today on legal business.

H. Abraham, of New York, was a noon arrival in the Capital City.

Mrs. John Koury returned today from a short visit with friends in Las Vegas.

Fred J. Lewis was among other Santa Fe people who attended the Santa Clara fiesta.

Attorney Charles F. Easley and son, Ralph, are expected to arrive home from Golden this evening.

H. C. Williams, a well driver and sheep raiser, was here today from Estancia on business.

Miss Cristabella Easley, of Las Vegas, is visiting her cousins, Misses Ethel and Mabel Easley.

E. S. Waddles, commercial traveler, St. Joseph, Mo., talked business today to Santa Fe merchants.

Antonio Alarid yesterday called on Las Vegas friends and returned to the Capital City this morning.

Frederico Delgado drove to Santa Clara, leaving Santa Fe yesterday. He attended the Santa Clara feast today.

G. H. O'Brien, of Denver, is a guest at the Palace. He is here on legal business with Attorney C. A. Spiess, of Las Vegas.

Governor Otero was a morning passenger to Las Vegas, where he will tomorrow review the troops at the Territorial encampment.

N. T. Rodriguez arrived yesterday from Del Norte, Colorado, and will spend a day or two in the Capital City visiting friends.

Miss Elizabeth Parks of Springfield, Missouri, Miss Meeker and Miss Rupert were in attendance at the Santa Clara fiesta today.

Mrs. Charles Closson and daughter, Miss May, will return tonight from Santa Clara, where they went to attend the feast of the pueblo.

Willard Fay, of Sacramento, California, writes friends here that he expects to come to the Capital City to spend the coming fall and winter.

Frank T. Newhall, of the New Mexican bindery department returned last evening from an extended trip to Denver and other Colorado points.

Mr. and Mrs. Robert Montoya, who have been visiting friends in Las Vegas, returned home early this morning on the special excursion train.

Dr. E. A. Leonard, camera in hand, spent the day in Santa Clara in hope of securing a number of good snapshots of the dancers and other scenes.

Mrs. Norman L. King and mother, Mrs. Lewis Schormeyer, will leave early in the coming week for California, where they will make an extended stay.

Charles A. Spiess, of Las Vegas, president of the New Mexico Board of Exposition Commissioners, was among the arrivals from Las Vegas last evening.

J. H. McCutcheon, editor of the Albuquerque Industrial Advertiser, was in town today picking up political news and hobnobbing with the Democratic bosses.

Miss Abigail Sullivan, Miss Josephine Powers and Miss Cora Roble were morning passengers over the Rio Grande Railroad for Santa Clara. They will return tonight.

Mrs. J. K. Billingslea and brother, of Chicago who have been guests of C. E. Linney, left this morning over the Denver and Rio Grande for Santa Clara to attend the fiesta of the pueblo. Mr. Billingslea is the traveling auditor of

the Globe Express Company and is well and favorably known throughout the Territory, where he has spent much time.

Nabor Ortiz, sheep owner in the vicinity of Pastura, on the El Paso and Northeastern Railroad, was among yesterday's arrivals in the city. He came on business.

General Manager W. S. Hopewell, of the New Mexico Fuel and Iron Company, went south this morning via the Santa Fe Central on business connected with his position.

Mrs. L. F. Largey, who has been spending several weeks in the Capital City, a guest of Mrs. T. B. Catron, departed this morning via the Rio Grande Railroad for Denver.

Rev. Gabino Rendon and Miss Ruth Rendon went north this forenoon over the Denver and Rio Grande Railroad for Embudo, where Mr. Rendon will be about ten days doing missionary work.

W. S. Hopewell, vice-president of the Santa Fe Central Railway, went to Moriarty this forenoon to inspect the work by the company's grading force on the Albuquerque Eastern Railway.

George E. Ellis, Jr., and T. Closson, joined the Santa Fe excursionists who went to Santa Clara over the Rio Grande Railroad this morning. They will return tonight.

Norman L. Baker, of Kenosha, Wisconsin, who was here on business with Attorney R. H. Hanna and others, attended the Santa Clara feast today. He will return to Santa Fe this evening.

Philip Holtzman, merchant at Pastura, Leonard Wood County, arrived last evening via the Santa Fe Central and left on the Santa Fe evening train for Las Vegas on a visit to his family in the Meadow City.

Rev. Father E. B. Walter of Sacramento, California, and Rev. Father B. Patrick, of St. Michael's College, were passengers via the Rio Grande Railroad this morning for Santa Clara, where they may spend several days.

General Manager Arthur G. Wells, of the Coast Lines of the Santa Fe Railway, passed Lamy on his way to Los Angeles from the East Wednesday night. He had been camping in the Maine woods the past few weeks.

Mrs. Gutierrez, of Moriarty, was in the Capital City today procuring provisions. She reported that sheep in the vicinity of Moriarty are in very good condition and that cattle are also doing well.

Mrs. C. H. Brittenstein, of Conejos, Colorado, and the Misses Brittenstein, of Washington, D. C., who arrived last night, went to Santa Clara this forenoon to attend the fiesta of the pueblo. They will return to Santa Fe tonight to remain several days.

Delegate to Congress Bernard S. Rodey, of Albuquerque, was among the Duke City visitors to the Meadow City yesterday and was hobnobbing with George P. Money, who has just declined to make the race for Congress on the Democratic ticket.

A. B. Craycraft, of Madison, Arkansas, who has been a sojourner in Santa Fe and vicinity for several weeks, went to Santa Clara this forenoon and witnessed the Pueblo dance and other festivities there. Mr. Craycraft will soon move his household goods to this city, and will make Santa Fe his home.

On August 25, at the residence of R. G. Head, at Las Vegas, Miss Mary Brunton, daughter of Captain William Brunton, of Shoemaker, will be married to Louis J. Baer Jr., of New York City. The bride is a graduate of Leland Stanford University. After the wedding, the couple will leave for Europe, and after their return will be at home in New York, although they promise to be frequent visitors to New Mexico, as Mr. Baer owns a large ranch in Mora County.

H. A. Smith, of Chicago, who is spending the summer in the southwest

## ALWAYS IN THE LEAD!

## ANOTHER SHIRT WAIST SALE!

Unprecedented Values in  
**WOMAN'S FINE SHIRT WAISTS.**

We have placed on sale all of our \$2, \$1.75, \$1.50 and \$1.25 Summer Waists for **ONE DOLLAR!**

Also a big reduction in prices on all Summer Goods.

**SELIGMAN BROS. CO.**

THE LOWEST PRICED HOUSE IN THE CITY FOR FINE GOODS!

TELEPHONE 36

P. O. BOX 219

and who have been in the Capital City several days, left this forenoon over the Santa Fe Central Railway for Torrance and other points south. Mr. Smith, who has never been in Santa Fe before, said that the city fully lived up to its enviable reputation for hospitality. He said that it was his wish that he might return to Santa Fe next summer to spend several weeks looking over the many points of interest and enjoying the climate.

W. H. Goebel is in receipt of a letter from his son, Gordon W. Goebel, who went overland on his bicycle to Belen, that he has arrived safely at his destination. The trip was without incident except that the young man lost his way after leaving Buffalo Springs and was obliged to return to that place and remain over night. He will remain in Belen several days, a guest of Oscar Goebel.

Advertising pays. Try it and see.

## MARKET REPORT.

### MONEY AND METAL.

New York, August 12.—Money on call, very easy, 1/2 @ 1 per cent. Prime mercantile paper 4 @ 4 1/2 per cent. Silver 58 1/2.

New York, August 12.—Lead quiet \$4.20 @ \$4.25; copper steady, 12 1/2.

### GRAIN.

Chicago, August 12.—Close, Wheat, Sept. 101 1/2; Dec. 100 @ 100 1/2. Corn, Sept. 53 1/2 @ 54; Dec. 52 1/2 @ 53. Oats, Sept. 33 1/2; Dec. 34 1/2.

### PORK, LARD AND RIBS.

Pork, Sept. \$11.50; Oct. \$11.40. Lard, Sept. \$6.75; Oct. \$6.82 1/2. Ribs, Sept. \$7.45; Oct. \$7.45.

### WOOL MARKET.

St. Louis, Mo., August 12.—Wool, is steady. Territory and western medium, 20 @ 22; fine medium, 16 @ 18; fine, 15 @ 16.

### STOCK MARKETS.

New York, August 12.—Atchafalpa 79 1/2; pfd., 97 1/2; New York Central, 110 1/2; Pennsylvania, 121 1/2; Southern Pacific, 55; Union Pacific, 97 1/2; pfd., 98 1/2; U. S. Steel, 12; pfd., 38 1/2.

Kansas City, Mo., August 12.—Cattle market strong. Native steers, \$3.75 @ \$5.75; Southern steers, \$2.50 @ \$4.00; Southern cows, \$1.50 @ \$3.25; native cows and heifers, \$1.75 @ \$4.75; Stockers and feeders, \$2.50 @ \$4.35; bulls, \$2.25 @ \$3.50; calves, \$2.50 @ \$4.50; western

steers, \$3.75 @ \$5.25; western cows, \$1.75 @ \$3.50. Sheep market slow. Muttons, \$3.25 @ \$4.25; lambs, \$4.00 @ \$6.00; Range wethers, \$3.50 @ \$4.25; Ewes, \$3.00 @ \$3.65.

Chicago, August 12.—Cattle, market, strong. Good to prime steers, \$5.00 @ \$6.00; poor to medium, \$4.00 @ \$4.90; stockers and feeders, \$2.00 @ \$4.10; cows \$1.25 @ \$4.00; heifers, \$2.00 @ \$4.50; canners, \$1.25 @ \$2.40; bulls, \$2.00 @ \$4.15; calves, \$2.50 @ \$5.50; Texas fed steers, \$3.00 @ \$4.00; western steers, \$3.05 @ \$4.25.

Sheep market steady. Good to choice wethers, \$3.60 @ \$4.15; fair to choice mixed, \$2.75 @ \$3.50; western sheep, \$2.75 @ \$4.15; native lambs, \$3.75 @ \$6.00; western lambs, \$3.75 @ \$6.00.

Twice your money's worth at the Bon Ton.

### A SENSIBLE MOTHER

Proud of her children's teeth, consults a dentist and learns that the beauty of permanent teeth depends on the care taken of the first set.

## SOZODONT

Liquid and Powder

should be used. The Liquid to penetrate into the little crevices and purify them; the Powder to polish the outer surface and prevent the accumulation of tartar.

3 FORMS: LIQUID, POWDER, PASTE.

### MISS A. MUGLER

## Milliner

Headquarters for Fine Headwear for Ladies, Misses and Children.

Fine Line of Wool, Knitting and Wash Embroidering Silk. Cushion Tops, Cords and Applique.

Small Line of Misses Hats Will Be Sold Out at Cost and in Fact Other Articles Offered at Bargains.

Southeast Corner of the Plaza.

Booth's oysters any way you want them at Bon Ton.

San Francisco St.

Telephone 26.

**H. S. Kaune & Co.**  
**GROCERS**

## COLORADO STRAWBERRIES

Are now out of market.

## FANCY COLORADO RASPBERRIES

Every day. Get your supply this week, as they will only last a week or ten days.

## PRIMROSE BUTTER

The purest and best Butter made, from the Cleanest Creamery in the world. Sealed in air-tight, odor-proof packages . . . . . **PRIMROSE!**

## BOSS PATENT and CRYSTAL PATENT Flour

BOSS PATENT : : : \$1.50 for 50 lb. Sack  
CRYSTAL PATENT : : : \$1.40 for 50 lb. Sack

If it is in the drug market and you want it you can  
procure it at  
**IRELAND'S PHARMACY**



## MINOR CITY TOPICS

The Friday Dancing Club will meet this evening.

The excursion to Las Vegas yesterday was patronized by 350 Duke City people. Word brought here today from Sunmount is to the effect that C. H. Dow is improving in health.

Santa Fe Lodge No. 2, I. O. O. F., will hold its regular weekly meeting at 7:30 o'clock this evening at Odd Fellows hall. The sprinkling cart should be kept going, that the dust on the business streets and residence avenues be kept down.

About fifty people from Santa Fe and vicinity drove to Santa Clara this morning to attend the fiesta at the pueblo today.

John Koury yesterday purchased a light bay family driving horse from W. G. Munson, of Albuquerque. The price paid was \$235.

Mrs. L. A. Harvey has something interesting to say to you in advertisement on the second page of this issue. Do not fail to read it.

Tomas Atencio and Miss Leonarda Salazar, both of Embudo, and quite well known in Santa Fe, will be united in marriage on August 17.

The Santa Fe Board of Trade will hold its regular monthly meeting this evening, beginning at 8 o'clock, in the Sena building on Palace avenue.

Tony, the brown pony, owned by the Santa Fe Water & Light Company, died this morning of colic. Frank Owen, manager of the company, valued the animal at \$100.

**WANTED**—A girl to do general housework in a small family. Good comfortable position for the right kind of girl. Apply New Mexican Printing Company.

Dr. Enos Andrews is making marked improvements on his residence in precinct No. 18. A new steel ceiling has just been placed and repairs are being made throughout the building.

William Giebel made a trip to the Yellow Pine saw mill on a burro this morning and while he was going through the mill the animal disappeared. The young man walked back.

President E. J. Vert of the New Mexico Normal University will speak before the teachers' institute in Santa Fe next week. He will also appear before the institutes to be held at Santa Rosa and at Bernalillo.

In an interesting game of base ball in Las Vegas yesterday the Las Vegas Blues were defeated by the Albuquerque Browns by a score of 22 to 1. A number of enthusiasts from the Capital City witnessed the contest.

The Santa Fe excursionists to Las Vegas arrived here this morning at 3:30 o'clock, tired but well pleased with the trip. Without exception they pronounce the treatment they received to have been of the most hospitable character.

The Lamy baseball team will come to Santa Fe on Sunday to cross bats with the Greys of the Capital City. The

contest will be played on the grounds near the Santa Fe depot. The diamond was cleared yesterday and is in excellent condition.

A bowling party was given at the E. S. Andrews alleys last evening. Those participating were: Messrs. and Mesdames James L. Seligman, Arthur Seligman, Fleming and C. N. Lord, Miss Wood and J. N. Zook. Several high scores were made.

The Santa Fe Central Railway will this evening detour El Paso & Northeastern train No. 3 from Kennedy to Torrance. A dispatch received here at noon today is to the effect that the washouts on the El Paso & Northeastern will be filled in by Saturday evening.

The remains of John Becker, who died on the morning of the ninth instant at the Sanitarium will be interred in the Rosario Cemetery in this city. The funeral will be conducted from the undertaking rooms of Charles Wagner on Saturday morning at 10 o'clock.

A savings bank book is better than a letter of recommendation; it is a certificate of character. Don't put your spare money down your throat or on your back, or send it up in smoke, but open an account by mail, with the Plaza Trust and Savings Bank of Las Vegas. Interest at 4 per cent per annum.

Assistant Superintendent Garratt, of the penitentiary, states that the burning of two kilns of brick at that institution has just been completed and that the brick are of first-class quality. People desiring vitrified brick or blocks for putting down side walks can secure what they want from Monday next by applying to the penitentiary authorities.

Certain young men who reside at Sunmount have been in the habit of driving at a dangerous rate of speed through the city. Several citizens have narrowly escaped being run down and it is high time that Marshal Richard Gorman and the police enforce the ordinance against fast driving and riding before somebody is fatally injured.

It is probable that in the near future a United States recruiting sub-station will be opened in Roswell. Major C. B. Vogdes is now making an investigation as to prospects preparatory to sending a recruiting sergeant to that city. It is expected that next week five recruits will be enlisted at the Albuquerque sub-station and two at Major Vogdes' office in the Capital City.

Engines 20 and 21 of the El Paso & Northeastern Railway were sent to the local Santa Fe Central yards this morning to get coal. The locomotives will today take the El Paso & Northeastern train No. 3 from Kennedy to Torrance. It will be several days before the damage done by the washouts on the Rock Island road will be repaired and the regular schedule restored.

Cooler weather is promised for tonight and Saturday according to the forecast issued today which is as follows: Partly cloudy tonight and Saturday, with local thunder showers. The temperature at 6:00 a. m. was 55 degrees and gradually rose until noon when it became stationary.

The maximum temperature yesterday was 78 degrees at 3 p. m.; minimum, 61 degrees at 5:00 a. m. The mean temperature for the 24 hours was 70 degrees. The relative humidity was 48 per cent.

Train No. 8 from the south and the west on the Santa Fe arrived at noon today and No. 2 was reported indefinitely late, and will not arrive until some time tonight.

Says the Las Vegas Optic: "There was a remarkable occurrence on Railroad Avenue on Tuesday night. A native woman complained of feeling tired. She laid down on the sidewalk and within five minutes had given birth to a healthy child. A carriage was called and the woman was sent home."

Major Fred. Muller, as administrator of the estate of Hugh N. Wilcox, today through his attorney, A. B. Renehan, filed a suit in attachment against Mrs. Marie Plague-Francolon, of Beaulieu, France, on account of moneys had and received by her through her agent with which to pay taxes on the property in this city formerly known as the Twitchell place, but which money was never applied, so it is alleged, to the purposes for which it was given. The amount claimed is \$355.

There is some talk among business and professional men of the feasibility of purchasing of Contractor Retsch the large granary situated on the Fort Marcy addition and moving it to the business district, converting it into a pavilion or play house. The building, which is 100 feet long by 60 feet wide, is in practically as good condition as it was shortly after it was erected. Santa Fe needs a play house and it has been suggested that the Board of Trade take up the matter at the meeting to be held this evening.

The Plaza fountain is in working order at present, or was this morning, as it was inspected by the chairman of the Improvement committee of the Woman's Board of Trade. This lady was much disgusted to find that the cups she had bought for the fountain only two weeks ago were missing. It is a question what is to be done in this matter, as no sooner are cups provided than they are stolen. The persons who do this petty thieving should be arrested, if possible, and punished. The cups are a very small expense, but the annoyance is considerable, and it is hoped that in future the Board will have nothing to complain of in this respect.

A large reservoir is to be built on the sheep ranch of Antonio Gomez in Red Canon in the Federal, twenty miles east from Antelope Springs. The contract has been let to J. W. Orchard, who was in Santa Fe the early part of the week. While here, Mr. Gomez engaged the services of fifteen men, who with another force will begin work within the next two weeks. About a month's time will be required to construct the reservoir. During the summer there has been plenty of good grass on the Gomez ranch, but showers have not been as frequent as in past years. It is believed that other ranchmen will follow Mr. Gomez's example.

The annual Fiesta of the Woman's Board of Trade will be held this year on the 23rd of August. This is an occasion to which the people of Santa Fe look forward in pleasant anticipation of the general good time provided by the Board. Some new features will be added this year in the shape of the "Klondike Gold Fields" and a dance which will be given towards the close of the fiesta. The Board is very much in need of money for the new Library building and confidently relies upon the well known generosity of the citizens of Santa Fe to respond as cheerfully as they always have done in the past. It is the cherished desire of every member of the Woman's Board of Trade to have some day, a Library building that will be a credit to the town and with the assistance of their friends it is hoped it will not be very long before this object is attained.

Bowling is gaining in favor as the summer draws to a close. Every evening finds a large crowd of enthusiasts at the Edward Andrews' alleys, San Francisco and Washington Streets. During the present week the feminine sex has been in the majority and a number of very good scores have been made. Ten pins is without question the favorite game. Eight or nine men are now in the 340 class and three feminine bowlers have crossed the 200 mark. They are Mrs. A. B. Renehan, 214, Miss Wood, 215, and Miss Morrison 209. Several others have mounted to the 100 mark.

A. M. Dettlebach, secretary of the Territorial Firemen's Association, who returned this morning from Las Vegas, reports that practically all arrangements have been completed for the annual fireman's tournament which will be held in the Meadow City on October 5, 6 and 7. He met yesterday with the executive committee, which has charge of the arrangements. It was decided to

place \$500 guaranteed prize money. Arrangements were also made with the Santa Fe Railway Company for a round trip fare from Santa Fe at the extremely low rate of \$2. The events for which prizes will be offered are: Wet hose race, dry hose test, single and double coupling contest, ladder climb, 100 yard foot race and other events that have not yet been decided upon. The officers of the association have assurances that the firemen of Santa Fe, Albuquerque and Las Vegas will participate and there is a probability of delegates being present from Raton, Socorro, San Marcial and Alamogordo. Mr. Dettlebach will in the near future visit these towns to stir up a sentiment in favor of attending the tournament. The tournament proper will be held in the Gallinas Driving Park. There will be side attractions for spectators, as well as the visiting firemen. One evening during the tournament there will be a smoker given for the fire ladders. On the 6th of October a grand ball will be given. In the forenoon of the same day there will be a picnic at the Gallinas Driving Park. Mr. Dettlebach witnessed the ball game between the Albuquerque Browns and the Las Vegas Blues. The score, 22 to 1 in favor of the visitors, tells a tale, and according to Mr. Dettlebach, the home team put up a miserable showing. Many of the fans became disgusted in the fourth inning and quit the grand stand and grounds. The teams are playing the second of a series of three games this afternoon.

## AN EXQUISITE JEWEL BOX.

It is Wrought of Ivory and was Brought to New Mexico from the Philippines.

Game Warden Page B. Otero has in his possession an exquisitely wrought ivory jewelry box, which is of Japanese workmanship, although brought to the United States from the Philippines by Frederick George, a sergeant in the United States army, who at one time served as sergeant major in the First Territorial Infantry, United States Volunteers. The carving is in high relief on the lid as well as on each of the four sides and depicts Buddhist priests making offering in a pagoda, the entire scene being surrounded by floral scroll-work of high artistic design. Game Warden Otero will have the box sent to the New Mexico exhibit at St. Louis by Commissioner Arthur Seligman.

This ivory jewel box was captured at Pilar, Province of Abra, northwestern Luzon, on February 2, 1900, by a detachment of Macabebes scouts in charge of Frederick George, sergeant of the United States Army. It was taken from the house of General Blas Villanueva, adjutant general of Aguinaldo's army. The city of Pilar was taken after the enemy had been routed at Bucha and Tyne by a union of the forces of the 33d United States Volunteer Infantry under Captain Van Way and native scouts under John F. Green, captain of the 33d Infantry, who being shot in the leg at San Jacinto, became disabled and had to be taken to the hospital at Vigan, Ilocos Su. This box was carried for eighteen days in a haversack through the Maraki Mountains and the Desert of Bontoc, northwestern Luzon, by Sergeant George, formerly acting sergeant major of the Second Battalion First Territorial Infantry, United States Volunteers. It was won in a raffle by Major Page B. Otero, First Territorial Infantry, United States Volunteers, on June 18, 1901, at Santa Fe, New Mexico.

## U. S. WEATHER BUREAU NOTES.

Forecast for New Mexico: Partly cloudy tonight and Saturday, with local thunder showers. Yesterday the thermometer registered as follows: Maximum temperature, 78 degrees, at 3:00 p. m.; minimum, 61 degrees, at 6:00 a. m. The mean temperature for the 24 hours was 70 degrees. Relative humidity, 48 per cent. Temperature at 6:00 a. m. today, 53 degrees.

Mexican callentes served only at the Bon Ton.

## THE DEATH PENALTY.

A little thing sometimes results in death. Thus a mere scratch, insignificant cuts or puny boils have paid the death penalty. It is wise to have Bucklen's Arnica Salve ever handy. It's the best salve on earth and will prevent fatality, when burns, sores, ulcers and piles threaten. Only 25c at the Fischer Drug Co's, Santa Fe, N. M.

## FOUND AT LAST.

Suitable vehicles for parties to visit the Cliff Dwellings or for the use of commercial travelers can be secured of A. Frank, at Espanola.

The best is not too good for the Bon Ton.

The New Mexican prints the news.

## CARTWRIGHT-DAVIS CO.

GEO. W. HICKOX, President S. G. CARTWRIGHT, Sec'y and Treas.

No. 250 San Francisco Street.

Grocery Telephone No. 4. Meat Market Telephone No. 42.

## CANNED FISH.

We have a number of items in canned fish that are desirable for a meal that is to be gotten up quickly.

Blue Sea Brand boneless cod is very nice either creamed or made into fish balls, each can enough for six or seven people. Per can.....25c  
Shredded codfish, 2 cans.....25c  
Codfish balls, only need frying, can 25c  
Devilled crabs, no charge for shells in which to cook and serve, 25 and 40c.  
Canned salmon, per can, 10 to 35c.  
Sardines.....15, 20 and 25c.  
Clams.....15, 20 and 25c.  
Eno Labs, deep sea delicacy, 2 cans, 35 cents.

## FRESH VEGETABLES.

Cucumbers are nice scooped out, filled with force meat, and baked.  
Try summer squash, sliced, dipped in batter and fried like egg plant or oysters.  
Green corn, string beans, beets, turnips, tomatoes, etc., are now in market.

## FRESH FRUIT.

We are now receiving some very nice peaches, and grapes are beginning to be good. Plenty of pears and apples.

## FLOUR.

If you do your own baking you want the best there is to be found in flour. Be safe. Order IMPERIAL.  
50 pound sack.....\$1.50

## MELONS.

Watermelons and cantaloupes are now at their best. Use them now.

## COFFEE.

South Sea Blend is the best coffee ever offered in New Mexico for the price. Pound package 25c.  
You cannot buy better coffee than SEAL BRAND, 1 and 2 pound cans, per pound.....40c

## MEAT MARKET

We still continue to supply the patrons of our market with the finest cuts of corn fed beef, lamb and mutton. Our prices, considering quality, are very low. We keep out the flies, the odor, and all the disagreeable features of the ordinary shop.

## BAKERY.

We are now turning out exceptionally good bread, very firm, substantial loaves, such as one expects from a shop catering to the most fastidious trade.

## HAY AND GRAIN.

If you keep a horse or cow the best is none too good in the way of feed. We handle everything in that line you are likely to need. Hay, new crop alfalfa, corn, oats, bran, chop, etc., all of the best quality and at reasonable prices.

## A. F. SPIEGELBERG

257 San Francisco Street.

## Indian and Mexican Wares and Curios

Blankets, Baskets, Pottery, Rag, Wax, Feather and Linen Drawn Work, Opals, Turquoises, Garnets and Other Gems.

**SPECIALTY**  
To have the best of everything in the line.

## THE CLUB

We handle the Leading Brands of KENTUCKY BOURBONS and PENNSYLVANIA RYES  
Goods bought in bond, purity guaranteed.

PURE CALIFORNIA WINES, IMPORTED and DOMESTIC CIGARS and TOBACCOS

Our Club Rooms are Large, Comfortable and Airy.

AKERS & TOWNSEND, Proprietors.

224 1/2 San Francisco St. Telephone No. 94

## HENRY KRICK SOLE AGENT FOR

## Lemp's St. Louis Beer.

ALL KINDS OF MINERAL WATERS MAIL ORDERS PROMPTLY FILLED  
The Trade Supplied From One Bottle to a Carload.  
Guadalupe Street, Santa Fe, N. M. Phone No. 38.

## DAVID S. LOWITZKI

Dealer in New and Second Hand

## FURNITURE

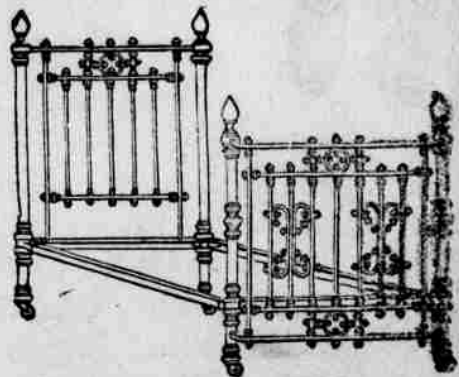
Latest designs in Rugs and Carpets  
Screen Doors and Window Screens.

Garden Hose.

Ice Chests that are just what you want

Goods sold for cash or on easy payments.

All Goods delivered free of charge.



Fresh Flowers all the Time! Fresh Fruits in Season!

## FRUITS AND FLOWERS

## The Clarendon Garden

San Miguel Street, Near the Old Church, Santa Fe, N. M.

CUT FLOWERS A SPECIALTY

WEDDING BOUQUETS

DECORATIONS

FLORAL DESIGNS

Telephone No. 12

P. O. Box 457

## THE OLD CURIO STORE

J. S. CANDELARIO 301 San Francisco St.



The best place to buy Indian and Mexican Blankets, Pottery and Curios, also Relics from the Cliff Dwellings. Beautiful Mexican Drawn Work, Box 346.

Everything usually carried in a first-class and up to date drug establishment may be found at  
**IRELAND'S PHARMACY**



# MALARIA

**IMPURE AIR** Malaria is not confined exclusively to the swamps and marshy regions of the country, but wherever there is bad air this insidious foe to health is found. Poisonous vapors and gases from sewers, and the musty air of damp cellars are laden with the germs of this miserable disease, which are breathed into the lungs and taken up by the blood, and transmitted to every part of the body. Then you begin to feel out of sorts without ever suspecting the cause. No energy or appetite, dull headaches, sleepy and tired and completely fagged-out from the slightest exertion, are some of the deplorable effects of this enfeebling malady. As the disease progresses and the blood becomes more deeply poisoned, boils and abscesses and dark or yellow spots appear upon the skin. When the poison is left to ferment and the microbes in the blood, liver and kidney troubles and other serious complications often arise. As Malaria begins and develops in the blood, the treatment to be effective must begin there too. S. S. S. destroys the germs and poisons and purifies the polluted blood. S. S. S. is a guaranteed purely vegetable remedy. Write us if you want medical advice or any special information. This will cost you nothing.

## SSS

THE SWIFT SPECIFIC CO., ATLANTA, GA.

## EL PASO-NORTHEASTERN SYSTEM

### THE WAY OF THE GREAT SOUTHWEST

### TO

### SAINT LOUIS, THE WORLD'S FAIR CITY.

Affording quick and convenient schedules and close connections. This is the shortest line to Kansas City, Saint Louis and Chicago, 158 miles the shortest El Paso to Saint Louis.

Through Pullman standard and tourists sleepers Los Angeles to Saint Louis via Southern Pacific and El Paso Northeastern, through chair cars El Paso to Saint Louis without change.

All meals served in dining cars.

Rates are always the lowest via the El Paso Northeastern System.

For detailed information call on or address:

T. H. HEALY, Passenger Agent, El Paso, Texas. A. N. BROWN, G. P. A.



## World's Fair Service & Rates

### Through Pullmans to St. Louis Every Day

\$43.55 good for 90 days on sale Aug. 19, Sept. 5, 6, 7, 8, and Oct. 3, 4, 5, 6.

ON NO. 2 which leaves here at 9:55 a. m., east of Kansas City sleeper runs over Alton-Burlington Route. Low Rates to World's Fair: 15 day tickets cost \$40.70; 60 day tickets cost \$43.10; tickets limited to Dec. 15 cost \$57.70. Very Cheap Excursion Rates: Tickets good 10 days, but honored only in coaches \$25.75. For literature and information apply to

H. S. LUTZ, Agt. A., T. & S. F. Ry., SANTA FE, N. M.

## NEW MEXICO MILITARY INSTITUTE

ROSWELL, NEW MEXICO.

THE MILITARY SCHOOL OF NEW MEXICO  
Established and Supported by the Territory.

**SIX MEN INSTRUCTORS**, all graduates of Standard Eastern Colleges. New buildings, all furnishings and equipments modern and complete; steam-heated, gas-lighted, baths, water-works, all conveniences. **TUITION, BOARD AND LAUNDRY**, \$900 per session. Session is three terms of thirteen weeks each.

**ROSWELL** is a noted health resort, 3,700 feet above sea-level; well-watered.

**REGENTS**—Nathan Jaffa, W. M. Reed, R. S. Hamilton, J. C. Lea and E. A. Cahoon

For particulars address

COL. J. W. WILLSON, Supt.

## Clean Cars with Good Ventilation

You will find no other kind in Burlington trains. Cleanliness is a hobby with the Burlington and particular people are cordially invited to make inspection whenever they have opportunity.

In summer, cleanliness and good air mean much to the traveler. He wants both. He deserves both. And he gets both.

Let me tell you about the low rates we are offering now to Chicago, St. Louis and other points East.

Burlington  
Route

Ticket Office, 1039 17th St.

G. W. VALLERY, General Agent,  
DENVER

## TERRITORIAL TOPICS.

### GRANT COUNTY.

A wagon load of peaches from the Mimbre country that was sold in Silver City this week averaged three inches in diameter to each peach.

Work has been commenced on the first story of the dormitory that is being built at the New Mexico Normal School at Silver City.

The Lyons and Campbell ranch this week shipped five hundred head of steers from Silver City to their range at Ordway, Colorado.

Horace Moses, James W. Jackson, and William Christian, of Santa Rita, left this week for Mexico, where they will enter the employment of a mining company for six months.

Alexander McDonald and Miss Lulu Brown were married at Santa Rita by Father Antonio, of Silver City. Miss Sandoval, of Silver City, was bridesmaid, and Daniel Thomas, of Santa Rita, was best man.

A miner, in the employ of the Burro Mountain Copper Company, was injured last week in a cave-in on the St. Louis mine. He had been warned of the dangerous character of the ground in which he was working, but would not heed.

### LUNA COUNTY.

The material for the new smelter at Deming is beginning to arrive.

H. Nordhaus, of Deming, has gone East and will take in the sights of the Exposition at St. Louis.

F. P. Swan, a mining engineer from Michigan, was a visitor in Deming for several days last week investigating some mining matters for a New York company. He went to Magdalena, Socorro County from Deming.

What might have been a fatal accident happened to James Diamond near Deming last week. Not being accustomed to the treacherous character of these mountain streams, he ventured into the Mimbre with a light buggy and there force of the water turned the buggy over, throwing him out. Had it not been for the timely assistance of Dr. Swope, who happened to be passing at the time, Diamond would have been drowned.

Says the Mining Graphic: "The rains which have delayed so long are now making up for lost time and for a few weeks at least, the irrigation problem is solved. The Mimbre River, above Deming, would be navigable for a fair sized steamer" and the meadows in Lewis Flat, east of the town, have resembled a vast inland sea much of the time for the past week. This winter our town will doubtless see its accustomed lively hay market, which turns so much money into the different channels of trade. Thus it is that all good things come to those who wait."

### OTERO COUNTY.

The teachers' normal institute opened in Alamogordo on Monday.

Work has been commenced on the foundation for the Catholic church at Alamogordo. The structure will be of adobe.

President C. B. Eddy and General Manager W. R. Martin of the El Paso and Northeastern Railway, left Alamogordo for the north on a special train this week.

The Alamogordo Improvement Company is discussing the advisability of planting pecan trees instead of cottonwoods on the streets of the Cottonwood City.

Emiliano Videnauro, of Mexico, who was imprisoned at the county jail at Alamogordo for assaulting another Mexican, gave bond for \$400. He forked over \$1,000 in Mexican money to cover the amount of bond.

The board of trustees of the New Mexico Asylum for the Blind was in session at Alamogordo on Tuesday to open bids for the construction of the proposed main building of the asylum. John Quinliven, of Alamogordo, was the lowest bidder.

Owing to the fact that plenty of rain has lately fallen on the ranges in Otero County, stock is doing nicely and it is very likely that there will be some good cattle sales in the fall, especially as there have been no sales for two years. Prospects for Otero County cattlemen are very much brighter than some time ago.

### DONA ANA COUNTY.

Professor J. J. Vernon, of the College of Agriculture and Mechanic Arts, at Mesilla Park, is at the St. Louis Exposition.

W. C. Mossman and B. C. Reush, of Berino, delivered a bunch of horses this week to El Paso parties for shipment to Texas points.

A new steam engine has been erected on the College farm at Mesilla Park. It is operating two pumps that throw 1,800 gallons of water per minute.

W. N. Hager has put in a pumping plant at Mesilla Park. M. E. Longacre is interested with him in the truck garden business. They have 50,000 sweet potato plants that look very flourishing.

Dr. J. R. Howes, of Las Cruces, accompanied by H. W. Forward, assistant general freight agent of the Erie Railroad, and G. B. Ellison, a civil engineer of Chicago, made an inspection trip over the Mesilla Valley this week with a view of making investments in irrigation enterprises.

Quite a number of farmers in the Mesilla Valley irrigated their alfalfa with the first muddy water that came down the Rio Grande last week. The other farmers thought that the water carried too much sediment and that this would kill the alfalfa. But the

layer of mud is cracking in every direction and the alfalfa is coming up fine through it, so there will be another good cutting of hay this year.

A Byron-Jackson pump was coupled to well No. 4 on the Ho Ra Ranch Company's ranch at Berino this week. It throws 1,000 gallons of water per minute. The vacuum gauge registers a lift of only fifteen feet. The water is of good quality and continuous pumping for ten days did not diminish the quantity of the water. The five wells of the company are capable of producing 5,000,000 gallons of water every twenty-four hours and a project is on foot to organize a company to supply El Paso with water.

A dinner like your mother used to cook, at the Bon Ton.

## J. P. VICTORY

### Attorney at Law and Real Estate Agent

117 San Francisco Street, Santa Fe, N. M.

### REAL ESTATE LOANS.

Money to loan upon real estate security on easy terms.

**HOMES.**  
I have a nice cottage (double) six rooms on one side, 4 on the other, owner occupies 4 rooms and the rest rent for \$25 a month; good neighborhood; ample space to erect other buildings on same street; stables and other outbuildings; the price asked is very low.

Can sell at a bargain cozy home on Manhattan avenue, one a new house with all modern improvements, the other an adobe-brick house, 7 rooms; fruit and vegetable garden; fruit trees; hydrant and tank; 70 choice fruit trees; currant and raspberry bushes; lot 80 by 285 feet. The stone house will be rented.

**SAN FRANCISCO STREET.**  
I have several business blocks for sale on this great mart of trade, some of them producing more than eight per cent, net, on purchase price asked.

**COAL AND TIMBER LANDS.**  
I can sell you large tracts of land suitable for mining coal or the production of timber.

### OTHER BUSINESS CHANCES.

I have several other commercial and business propositions to submit those desiring to enter mercantile life and to grow up with the new era of prosperity now coming in with the Santa Fe Central Railway.

### CHURCHES.

I am authorized to dispose of the Congregational Church, on the south side, convenient to the contemplated Union Depot. It stands upon two lots, and will be sold cheap, or the building will be repaired and leased to responsible parties.

### THERE ARE OTHERS.

Several small houses, some stone some brick, others frame, upon my books, which I would be glad to show an intended purchaser. They are desirably situated, and will be sold cheap.

### ROOMS: FURNISHED OR UNFURNISHED.

Furnished or unfurnished rooms in all parts of the city. Single, or en suite for light housekeeping. Some of them within five minutes walk of Plaza.

### ORCHARDS.

I also have a fruit ranch in a high state of cultivation, in the suburbs, with a building site overlooking the entire city of Santa Fe. On it there is an artificial reservoir, the only one of its kind in the city, 12 feet or more in depth, holding over 125,000 gallons of water, constantly replenished, from which the whole place can be irrigated daily during the summer, and which could be stocked with fish. The land contains many hundreds of young trees of the finest and most valuable varieties of apples, peaches, pears, plums, apricots, cherries and other fruits, the greater part of which already bear; a young bearing vineyard, thousands of bushes of currants and other small fruits; extensive beds of asparagus, rhubarb, and other fine vegetables. To be sold on easy terms, and for much less than it cost, owing to ill health of the owner.

### CATTLE AND SHEEP RANGES.

In all parts of the Territory, and none in Wyoming.

I will take pleasure in showing prospective investors desirable building sites in the neighborhood of the Capitol, and in the vicinity of the Presbyterian church, and other localities of the city which in a few years will be worth double the present asking price.

### OUTSIDE PROPERTY.

At El Cuervo, 10 miles from the River and road, I can sell you about 640 acres; patented; excellent grazing land.

Convenient to Las Vegas, I have for sale several large tracts of desirable land which I am permitted to sell at very low figure. One tract contains about 3,500 acres, and is located about three and one-half miles southwest of Las Vegas; nearly all of it is under fence; good grazing and water for stock; some timber. Another tract is 50 acres, 7 miles from Las Vegas; timber and grazing, with an excellent stream of water passing over it. Still another tract of 850 acres of farming grazing and timber land, 8 miles west of Las Vegas, with running water, and it.

## Santa Fe Central Railway

### TIME TABLE

Effective Sunday, June 5, 1904.

South Bound				North Bound			
No.	MI.	Stations.	Alt.	No.	MI.	Stations.	Alt.
6:00 a.	0	Levee	7,000	8:00 p.	0	Levee	7,000
6:10 a.	1	Donaciana	7,650	8:10 p.	1	Donaciana	7,650
6:20 a.	2	Vega Blanca	8,400	8:20 p.	2	Vega Blanca	8,400
6:30 a.	3	Kennedy	8,950	8:30 p.	3	Kennedy	8,950
6:40 a.	4	Clark	9,125	8:40 p.	4	Clark	9,125
6:50 a.	5	Stanley	9,370	8:50 p.	5	Stanley	9,370
7:00 a.	6	Moriarty	9,520	9:00 p.	6	Moriarty	9,520
7:10 a.	7	Melintosh	9,775	9:10 p.	7	Melintosh	9,775
7:20 a.	8	Estancia	9,940	9:20 p.	8	Estancia	9,940
7:30 a.	9	Willard	10,125	9:30 p.	9	Willard	10,125
7:40 a.	10	Progresso	10,310	9:40 p.	10	Progresso	10,310
7:50 a.	11	Bianca	10,500	9:50 p.	11	Bianca	10,500
8:00 a.	12	Torrance	10,675	10:00 p.	12	Torrance	10,675

Connecting at Santa Fe, N. M., with the Denver & Rio Grande R. R. for all points in Colorado, Utah, Idaho, Montana, Washington and the Great North West.

Connecting at Torrance, N. M., with the El Paso-Northeastern System for Kansas City, Chicago, St. Louis and all points east and for El Paso, Texas and all points in Southern New Mexico, Arizona and the Republic of Mexico.

Connecting at Kennedy, N. M., for points east and west on the Atchison, Topeka & Santa Fe Railway.

For rates and information address B. W. ROBBINS, General Passenger Agent, Santa Fe, N. M.

## D. & R. G. SYSTEM, Santa Fe Branch.

### TIME TABLE.

EAST BOUND		WEST BOUND	
No.	MI.	No.	MI.
5:30 a.	0	9:00 a.	0
5:40 a.	1	9:10 a.	1
5:50 a.	2	9:20 a.	2
6:00 a.	3	9:30 a.	3
6:10 a.	4	9:40 a.	4
6:20 a.	5	9:50 a.	5
6:30 a.	6	10:00 a.	6
6:40 a.	7	10:10 a.	7
6:50 a.	8	10:20 a.	8
7:00 a.	9	10:30 a.	9
7:10 a.	10	10:40 a.	10
7:20 a.	11	10:50 a.	11
7:30 a.	12	11:00 a.	12

Trains stop at Embudo for dinner where good meals are served.

### CONNECTIONS.

At Antonito for Durango, Silverton and intermediate points.  
At Alamosa for Denver, Pueblo and intermediate points via either the standard gauge line via La Veta Pass or the narrow gauge via Salida, making the entire trip in day light and passing through the FAMOUS ROYAL GORGE, also for all points on Creede branch.

At Salida for all points west.

At Denver, Pueblo and Colorado Springs for all points east.

For further information, sleeping car reservations time cards, literature, etc., call on or address.

F. H. McBRIDE, Agent.

Santa Fe, N. M.

S. K. HOOPER, G. P. A.

Denver, Colo.

### Notice for Publication.

(Homestead Entry No. 5552.)

DEPARTMENT OF THE INTERIOR.

Land Office at Santa Fe, N. M., July 13, 1904.  
Notice is hereby given that the following named settler has filed notice of his intention to make a final proof in support of his claim, and that said proof will be made before the register or receiver at Santa Fe, N. M., on August 25, 1904, viz: Vidal Mora heir of Alejandro Mora deceased, for the w 1/2 s 1/2 section 24, e 1/2 sec. 30, township 12 north, range 6 east. He names the following witnesses to prove his continuous residence upon and cultivation of said land, viz: Livrado N. C. Anacleto Sandoval, of Galisteo, N. M.; Polito Roybal, Abelino Valencia, of Kennedy, N. M.

MANUEL R. OTERO, Register.

## STORY & CLARK

# Pianos!

Read What Accomplished Musicians Say of the Story and Clark Piano.

"Equal if not superior to any instrument I have had occasion to use."—Barron Berthold.

"Shows such superiority of workmanship and finish as must make them welcome to any household."—Leonora Jackson.

"Grand resonant in tone and delightfully sweet and tender."—Martha Bauermeister.

"I cannot speak too highly of your pianos, they seem to be unsurpassable."—R. Watkin Mills.

"Your pianos embody sweetness and richness of tone, splendid carrying power and excellent action."—Rosa Oltzka.

"They are mod. in tone and touch."—Marie Ehgle.

"I find your pianos wonderfully sympathetic for accompanying the voice."—Lillian Blauvelt Pendleton.

"Gave the liveliest satisfaction to me. I consider them second to none."—David Frangoon Davies.

"I think it capable of the fullest expression of musical thought."—Ellen Beach Yaw.

"In my opinion they rank among the very best pianos of the day."—Emile Sauret.

"Possessed of a beautiful quality of tone and a most sympathetic touch."—Fernando de Lucia.

"I was perfectly charmed with its beauty of tone and delightful touch."—Francis Hiltzen.

"Their tone is sweet as well as resonant. Are remarkably adapted for accompanying the voice."—Clementine de Vere Saplo.

### THE STORY & CLARK PIANO CO.

Employ only expert workmen and no piece work or contract work is done in their factories.

They have won renown on two continents for excellence and beauty of their instruments.

Prices and terms most liberal. Call on the General Agent for New Mexico,

## FRANK DIBERT

Santa Fe, N. M.

Who will show you the Story and Clark Pianos in the several styles and finish—Mahogany, Hungarian, Walnut and Golden Oak.

1904 August, 1904						
Sun	Mon	Tues	Wed	Thur	Fri	Sat
1	2	3	4	5	6	
7	8	9	10	11	12	13
14	15	16	17	18	19	20
21	22	23	24	25	26	27
28	29	30	31			

## INFORMATION BUREAU OF THE WORLD'S FAIR.

A St. Louis World's fair information bureau has been established at 834 Seventeenth street, Denver, in charge of Phil P. Hitchcock, where information will be cheerfully furnished.

It will pay you to advertise. Try it.

### SOCIETIES.

Masonic.

MONTEZUMA LODGE No. 1, A. F. and A. M.

—Regular communication first Monday in each month at Masonic Hall at 7:30 p. m.

S. SPITZ, W. M.

F. P. CRICHTON, Secretary.

### SANTA FE CHAPTER.

No. 1, R. A. M.—Regular convocation second Monday in each month at Masonic Hall at 7:30 p. m.

W. E. GRIFFIN, H. P.

ARTHUR SELIGMAN, Secretary.

### SANTA FE COMMANDERY.

No. 1, K. T.—Regular convocation fourth Monday in each month at Masonic Hall at 7:30 p. m.

W. R. PRICE, E. C.

W. E. GRIFFIN, Recorder.

### K. OF P.

SANTA FE LODGE NO. 2, KNIGHTS of PYTHIAS—Regular meeting every Tuesday evening at 8 o'clock.

Castle Hall, corner of Don Gaspar Avenue and Water Street. Visiting Knights given a cordial welcome.

JOHN L. ZIMMERMANN, C. G.

JOHN K. STAUFFER, K. R. S.

R. H. BOWLER, Master of Finance.

### I. O. O. F.

SANTA FE LODGE NO. 2, I. O. O. F.



## LOOK AT THE CLOUDS FROM THE TOP

And so see the Silver Lining. You can do it from OUR TRAINS. We go above them in places.

# Mexican Central Railway

With Its Two Thousand Miles of Track Reaches All the Principal Places of Interest and Note.

Address the undersigned for full and reliable information.  
W. D. MURDOCK, A. G. P. A., City of Mex'co. A. DULOHERY, Commercial Agent, El Paso, Texas.

## Not Luck But Results.

That is why you see our teams so busy supplying the wants of the people with our fine

## CERRILLOS COAL MONERO

WHOLESALE AND RETAIL.

WE WAGER That there is some difference in wood. Our wood is the best to be had & always at your call. FIRE WOOD

Your order will receive prompt and careful attention.

## CAPITAL COAL YARD

OFFICE: Garfield Avenue, Near A. T. & S. F. Depot Phone No. 35

# THE CLAIRE HOTEL

GEORGE E. ELLIS, Proprietor.

The most conveniently located and only fire-proof and steam-heated Hotel in the city. Electric lights, baths and sanitary plumbing throughout. Everything up to date. First-class Cafe and Buffet connected. Fine Sample Room for Commercial Men

AMERICAN OR EUROPEAN PLAN.

Postal Telegraph and Cable Co's Office in the Building  
CORNER PLAZA AND SAN FRANCISCO STREET.

## H. B. CARTWRIGHT & BRO., WHOLESALE GROCERS

Grain, Flour and Potatoes Stationery,  
Patent Medicines and Grocers' Sundries.

PROMPT ATTENTION GIVEN MAIL ORDERS.

SANTA FE, N. M.

## THE : ZEIGER : CAFE

QUICKEL & BOTHE, Proprietors.

Club Room and Billiard Hall Attached.

Corner Railroad Avenue and Second Street

ALBUQUERQUE NEW MEXICO

## THE DENVER & RIO GRANDE SYSTEM

Denver & Rio Grande, Rio Grande Western, Rio Grande & Santa Fe and Rio Grande Southern Railroads.

THE POPULAR LINE TO

Colorado Springs, Pueblo, Cripple Creek, Leadville, Glenwood Springs, Aspen, Grand Junction, Salt Lake City, Ogden, Butte, Helena, San Francisco, Los Angeles, Portland, Tacoma, and Seattle. Also Reaches all the Principal Towns and Mining Camps in Colorado, Utah and New Mexico.

## THE TOURIST'S FAVORITE ROUTE

To all Mountain Resorts

The Only Line Passing Through Salt Lake City Enroute to the Pacific Coast

THROUGH  
SLEEPING  
CARS

BETWEEN DENVER AND  
ALAMOSA SALT LAKE CITY  
CRIPPLE CREEK OGDEN  
LEADVILLE PORTLAND  
GLENWOOD SPGS SAN FRANCISCO  
GRAND JUNCT'N LOS ANGELES

DINING CARS SERVICE A LA CARTE ON ALL THROUGH TRAINS

## REMINGTON TYPEWRITERS

NEW MEXICAN PRINTING CO., Dealers.  
Santa Fe New Mexico

## ALAMOGORDO FIVE YEARS AGO

A Mighty Change Has Come Over That Part of Otero County in That Period.

Last Saturday, just five years ago, the headquarters of the E. P. & N. E. (then the White Oaks Route) was removed from El Paso to Alamogordo. The train left El Paso at 10 a. m., and arrived here at 1 p. m., and among those on board that train were Colonel A. S. Gieg, E. J. Dedman, Harry Alexander, J. J. Brick and E. A. Olds, of the general manager's office, and of those in the auditor's office we can call to memory the names of E. M. Harter, Harry Hall, and R. Parker Drake. George Webb was chief dispatcher. The attorney's office was not moved with the operating outfit, but remained in El Paso for another year. A good soaking rain was falling (it is not raining now) when the train arrived. The beloved Alamo brass band was not in existence then, but from the throats of more than a thousand glad voices shouts of welcome went up and this was the beginning of "Alamogordo the wonderful."

Of that body of men who arrived that day only two now remain with the railroad, Messrs. E. J. Dedman and J. J. Brick. The others are scattered to the four corners of the earth.

The road to the north had reached Carrizozo and the A. & S. M. railway was at La Luz. What a change! Then the train was boarded at El Paso at about 10 a. m., they took lunch at the car at Jarilla and arrived here about 2 or 3 p. m. and stopped. Now the train is boarded for Chicago or anywhere else it is wanted to move. Then Alamogordo was hardly known to the inhabitants of El Paso. Now Alamogordo is on the map of the United States and known throughout the whole railroad kingdom.—Alamogordo News.

## FROM DURANGO TO CLIFTON.

It is the Southern Pacific That is Now Figuring on the Proposition.—A Company Incorporates.

That the Southern Pacific means business with its proposed road connecting the coal fields of Durango, Colorado, with the southwest, is further evidenced by the fact that articles of incorporation have just been filed in Colorado for the Arizona and Colorado Railroad Company, which is the name the proposed line is bearing.

The articles of incorporation say that branch lines will extend from Durango to Silverton and Dolores and will thereby supply cheap coal to the low grade mines at those towns. The new road will connect with the Southern Pacific and will carry coal to New Mexico, Arizona and Mexico. Twenty-five miles of coal beds were found under a thin coating of lava near Durango and can be developed at a small cost.

The route of the road in Colorado will be from a point at the intersection of the Animas river and the Colorado-New Mexico boundary line, and from thence north by the most direct route to Durango. From Durango two branches will be laid, one through the rich farming lands of Montezuma County to Dolores, and the other past the numerous mines in San Juan County to Silverton. The road will also greatly enlarge the business interests of La Plata County, in which Durango is situated, and of San Juan County, New Mexico.

The building of the railway will be one of the best things that has happened to the southwestern part of the state for years and greater activity in all lines of business is looked for. The capital stock is \$2,000,000, divided into 20,000 shares of a par value of \$100 per share. The company will also build telegraph and telephone lines.—El Paso Herald.

Eat dinner tomorrow and play even at the Bon Ton.

## SANTA FE ROUTE

TIME TABLE.  
EFFECTIVE JUNE 1st, 1904.

No. 722 leaves Santa Fe 10:10 a. m. to connect with No. 2, east bound, with connection from El Paso and southern California. Returning, arrive at Santa Fe 12:01 p. m.

No. 727 leaves Santa Fe at 7:25 p. m., to connect with No. 7, makes connection for passengers going east on No. 8 and also brings passengers and mail from No. 1 west bound—No. 7 makes all local stops between Lamy and Albuquerque, returning arrives at Santa Fe, at 9:25 p. m.

All Santa Fe trains run through solid from Chicago to California and carry free chair cars, tourist and Pullman sleepers.

Through sleeping car reservation arranged for on application.

H. S. LUTZ,  
Agent, Santa Fe, N. M.  
City ticket office, Catron block, east side Plaza.

Thick and juicy steaks at Bon Ton.

The Santa Fe announces a through daily sleeper from El Paso to St. Louis via Kansas City during the World's Fair period. Connection for this train leaves Santa Fe at 9:55 a. m. and one section has been assigned to the Santa Fe office for the accommodation of passengers from this city.

## HOTEL ARRIVALS.

Palace: David Feiss, New York; Philip Holzman, Pastura; Mrs. C. H. Brittenstein, Conejos, Colorado; Miss Brittenstein, Conejos, Colorado; Mrs. J. H. Billingslee, A. H. Andrews, Chicago; J. D. Frazee, Antonito; Charles A. Spless, Las Vegas.

Claire: Nabor Ortiz, Pastura; John A. Cavanaugh, Mr. and Mrs. J. H. Gibbitts, New York; James C. Porter, Pittsburg.

Bon Ton: J. M. Pittinger, E. Shields, Alamogordo; Fred Missing, Santa Rosa.

Normandie: Walter McBride, Trinidad; John H. McCutcheon, Albuquerque; Randolph Vargas, Vinton, N. J.

## \$100 Reward, \$100

The readers of this paper will be pleased to learn that there is at least one dreaded disease that science has been able to cure in all its stages. That is Catarrh. Hall's Catarrh Cure is the only positive cure now known to the medical fraternity. Catarrh being a constitutional disease, requires a constitutional treatment. Hall's Catarrh Cure is taken internally, acting directly upon the blood and mucous surfaces of the system, thereby destroying the foundation of the disease, and giving the patient strength by building up the constitution and assisting nature in doing its work. The proprietors have so much faith in its curative powers that they offer One Hundred Dollars for any case that it fails to cure. Send for list of testimonials.

address F. J. CHENEY & CO., Toledo, O. Sold by all Druggists, 75c.

Take Hall's Family Pills for constipation.

Short orders a specialty at Bon Ton.

## Sick Headache.

"For several years my wife was troubled with what physicians called sick headache of a very severe character. She doctored with several eminent physicians and at great expense, only to grow worse until she was unable to do any kind of work. About a year ago she began taking Chamberlain's Stomach and Liver Tablets and today weighs more than she ever did before and is real well," says Mr. Geo. E. Wright of New London, New York. For sale by all druggists.

The Santa Fe Railway announces a reduction in World's Fair rates to St. Louis from Santa Fe, and a very liberal extension of time, on August 19th, September 5th, 6th, 7th, and 8th, and October 3d, 4th, 5th and 6th, the rate will be \$43.55 with a return limit of 90 days.

Follow the crowd to the Bon Ton.

## Biliousness

"I have used your valuable Cascarets and find them perfect. Couldn't do without them. I have used them for some time for indigestion and biliousness and am now completely cured. Recommend them to everyone. Once tried, you will never be without them in the family."

Edward A. Marx, Albany, N. Y.



Pleasant, Palatable, Potent, Taste Good, Do Good, Never Sicken, Weaken or Grip, 10c, 25c, 50c. Never sold in bulk. The genuine tablet stamped C. C. C. Guaranteed to cure or your money back.  
Sterling Remedy Co., Chicago or N. Y. 60c  
ANNUAL SALE, TEN MILLION BOXES

# Maxwell Grant.

FARMING LANDS UNDER IRRIGATION SYSTEM.

These farming lands with perpetual water rights are now being offered for sale in tracts of forty acres and upwards. Price of land with perpetual water rights from \$17 to \$35 per acre, according to location. Payments may be made in ten year installments. Alfalfa, grains, fruits of all kinds, and sugar beets grow to perfection.

## GOLD MINES.

On this Grant, about forty miles west of Springer, N. M., are the gold mining districts of Elizabethtown and Baldy, where important mineral discoveries have lately been made. Claims on unlocated ground may be made under the mining regulations of the company, which are as favorable to the prospector as the U. S. government laws.

Near Raton, N. M., on this grant, are located the Coal Mines of the Raton Coal and Coke Company, where employment may be found at good wages for any wishing to work during the seasons that farming or prospecting can not be successfully done.

For particulars and advertising matter apply to

## THE MAXWELL LAND GRANT CO

RATON, NEW MEXICO

## OJO CALIENTE HOT SPRINGS.

These Celebrated Hot Springs are located in the midst of the Ancient Cliff dwellers, twenty-five miles west of Las Alamos, and fifty miles north of Santa Fe, and about twelve miles from Baranca Station, on the Denver and Rio Grande Railway, from which point a daily line of stages run to the Springs. The temperature of these waters is from 90 to 122 degrees. The gases are carbonic. Altitude, 6,000 feet. Climate very dry and delightful the year round. There is now a commodious hotel for the convenience of invalids and tourists. These waters contain 1,686.24 grains of alkaline salts to the gallon, being the richest alkaline Hot Springs in the world. The efficacy of these waters has been thoroughly tested by the miraculous cures attested in the following diseases: Paralysis, Rheumatism, Neuralgia, Consumption, Malaria, Bright's Disease of the Kidneys, Syphilis and Mercurial Affections, Scrofula, Catarrh, La Grippe, Female Complaints, etc., etc. Board, lodging and bathing, \$2.50 per day; \$15 per week; \$50 per month. Stage coach Denver trains and waits for Santa Fe train upon request. This resort is attractive at all seasons, and is open all winter. Passengers for Ojo Caliente can leave Santa Fe at 9 a. m., and reach Ojo Caliente at 4 p. m. the same day. Fare for round trip from Santa Fe to Ojo Caliente, \$7.40. For further particulars, address

ANTONIO JOSEPH, Proprietor,

Ojo Caliente, Taos County, N. M.

# Wabash Route

ST. LOUIS

CHICAGO

DETROIT

BUFFALO

NIAGARA

FALLS

NEW YORK

BOSTON

AND ALL EASTERN CITIES.

The Shortest and Only Line Running Over Its Own Track from Kansas City to St. Louis to Niagara Falls and Buffalo. With All Modern Conveniences.

Time and Service Unexcelled  
Three Solid Fast Through Trains Daily

Stop-over allowed on all tickets via Niagara Falls. Meals served in the comfortable Wabash Palace Dining Cars. For further information inquire of Conductor, Ticket Agents or address R. F. KITCHCOCK, General Agent, Passenger Department, DENVER, COLORADO.

# CHICAGO AND BACK

OVER



One Way via  
ST. LOUIS With  
Ten Days Stop-Over

June 1st to Sept. 30th

Limit Oct. 31st

\$45 55

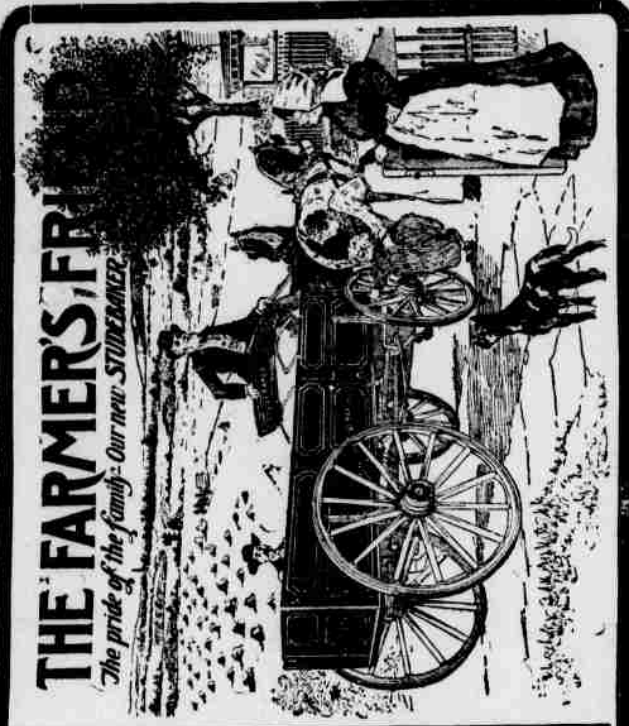
Full Particulars Santa Fe Ticket Offices

H. S. LUTZ, Agent



## GOOD NEWS FOR YOU!!

SCREEN DOORS All Sizes and Large Assortment to Choose From. Fixtures for Same.



**A Wagon's First Cost**  
is not as high as you think. There are plenty of low priced wagons (mighty dear in the end, but actually look well—at first. You can't see the paint-covered wood—pithy, "dead," the defective axle-wood, or foresee the shuddering, rattling, loosening of spokes, the tire setting and constant repairs, that will rise up to trouble you in time. All said and done, it pays to buy once for all a dependable wagon.

**STUDEBAKER WAGONS**  
That is a matter of common knowledge—testified to by every man who ever bought one. Built on honor by master mechanics out of selected and perfectly seasoned materials. Definite, sterling worth in each job of Vehicles and Harness, that result in longer and better service than you have a right to expect. You don't make mistakes if you pin your faith there.

**Studebakers in Your Town.**  
This undersigned are the best sales agents. We carry a generous stock, we'll order and quickly get anything you want. You see the goods and know what you are buying. We stake our reputation on pleasing you. Always ready to show you. Give us a call.

**Santa Fe Hardware & Supply Co.,**  
Santa Fe, N. M.



Buy a SAMSON WINDMILL and Irrigate Your Land. Don't Depend on Rain.

WATER FILTERS &amp; COOLERS

**CHARLES W. DUDROW,**  
**LUMBER - SASH - DOORS**

All Kinds of Building Material.

CORD AND STOVE WOOD EXTRA DRY AND CUT TO FIT YOUR STOVE  
**CERRILLOS AND HAGAN COAL**

Delivered to any part of the City.

**TRANSFER AND STORAGE**  
We Haul Everything that is Movable.

Phone 35 Santa Fe Branch Office and Yards Cerrillos, N. M.

**H. C. YONTZ** MANUFACTURER OF—**Mexican Filigree Jewelry**

DEALER IN

Watches, Clocks, Jewelry and Hand Painted China.

Repairing of fine watches and jewelry work a specialty.

**INDIAN RUGS and INDIAN GOODS \* FILIGREE at WHOLESALE and RETAIL**  
247 San Francisco St.

## DO YOU EAT?

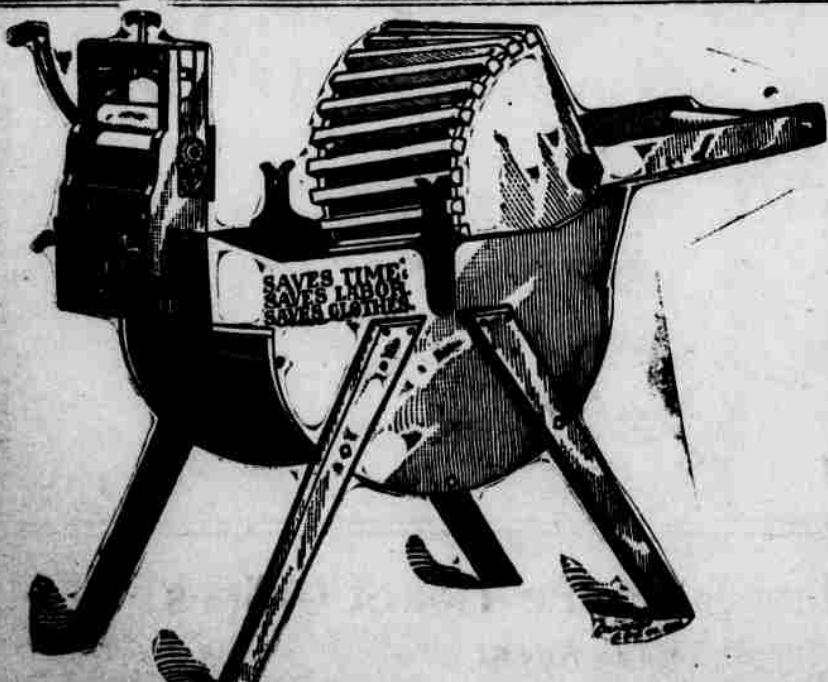
If You Do Try the New Cuisine at the

**Coronado Cafe**

Short Orders a Specialty. All the Delicacies of the Season. Open Day and Night.  
Regular Meals 25 Cents. 21 Meals for \$4.50.

\* **G. LUPE HERRERA, Proprietor** \*

254 San Francisco Street, Next to Cartwright Davis Co's Store.



W. H. GORBEL, The Hardware Dealer. Santa Fe, N. M.

## OFFICIAL MATTERS.

Continued From First Page.

and to erect and operate cold storage plants.

The capital stock of the company is given as \$250,000, and the term of existence is fifty years.

**Homestead Entries.**

The following homestead entries were made in the United States Land Office yesterday:

7999, Augustus B. Brookfield, Aztec, S 1-2, NE 1-4 section 27 T 30 N, R 12 W, 160 acres in San Juan County.

8000, Guadalupe Segura, of Santa Rosa, N 1-2, SE 1-4, S 31, T 8 N, R 17 E, 160 acres in Leonard Wood County.

8001, Victor Solano, of Chappelle, SE 1-4 SW 1-4, S 7, T 13 N, R 13 E, and SW 1-4, SE 1-4, section 7, T 13 N, R 16 E, and NE 1-4, NW 1-4, section 18, T 13 N, R 16 E, and NW 1-4, NE 1-4, section 18, T 13 N, R 16 E, 160 acres in San Miguel County.

8002, Miguel Baca, of Chappelle, fractional section, SE 1-4, lots 4 and 5, section 18, T 13 N, R 16 E, and SW 1-4 NE 1-4 S 18, T 13 N, R 16 E, 135 acres in San Miguel County.

8003, Guadalupe Con, of Lucero, SE 1-4 S 1-2, SW 1-4 section 14, T 19 N, R 23 E and NW 1-4, NW 1-4, section 23, T 19 N, R 23, 160 acres in Mora County.

8004, Mateo Hernandez, Wagon Mound, SE 1-4 SE 1-4 section 23, T 19 N, R 23 E, and SE 1-4 SW 1-4, SW 1-4, SE 1-4 section 24, T 19 N, R 23 E, 160 acres in Mora County.

8005, Vidal Medina, Lucero, SE 1-2, NW 1-4, S 23, T 19 N, R 23 E, 160 acres in Mora County.

8006, Benito Montoya, Wagon Mound, W 1-2, NW 1-4, section 26, T 19 N, R 23 E, and N 1-2, SW 1-4, S 26, T 19 N, R 23 E, 160 acres in Mora County.

8007, Felipe Hernandez, Wagon Mound, NW 1-4, SE 1-4 section 26, T 19 N, R 23 E, and W 1-2, NE 1-4, S 26, T 19 N, R 23 E, and SW 1-4, SE 1-4, section 23, T 19 N, R 23 E, 160 acres in Mora County.

8008, Mrs. Mary Manlux, Springer, lots 2 and 3, S 31, T 24 N, R 20 E, and SE 1-4 NW 1-4, section 31, T 24 N, R 20 E, and NE 1-4 SW 1-4, S 31, T 24 N, R 20 E, 159.44 acres in Colfax County.

8009, Edward Creighton McKay, Las Vegas, E 1-2, SW 1-4, section 33, T 13 N, R 17 E, and NE 1-4, NW 1-4, S 4, T 12 N, R 17 E, and NW 1-4, NE 1-4, S 4, T 12 N, R 17 E, 160 acres in San Miguel County.

8010, Cleofas Medina, Wagon Mound, E 1-2, NE 1-4, section 9, T 19 N, R 23 E, and SW 1-4, N 1-4, S 10, T 19 N, R 21 E, and NW 1-4, SW 1-4, section 10, T 19 W, R 21 E, 160 acres in Mora County.

8011, Luis Vigil, San Miguel, N 1-4, section 7, T 13 N, R 16 E, 161.80 acres in San Miguel County.

8012, Abran Romeo, Wagon Mound, NE 1-4, NE 1-4 section 10, T 20 W, R 21 E, and W 1-2, NW 1-4, section 11, T 20 W, R 21 E, and SE 1-4 NW 1-4, S 11, T 20 W, R 21 E, 160 acres in Mora County.

Homestead entries were made as follows on the tenth inst.:

8014, Epifanio Garcia, Wagon Mound, E 1-2, SW 1-4, section 12, T 12 N, R 21 E, and W 1-2, SE 1-4, section 12, T 20 N, R 21 E, 160 acres in Mora County.

8015, Manuel A. Martinez, Wagon Mound, SW 1-4, section 15, T 19 N, R 21 E, 160 acres in Mora County.

8016, Felix E. Valdez, Springer, E 1-2, SE 1-4, section 13, T 23 N, R 20 E, and N 1-2, NE 1-4, section 24, T 23 N, R 20 E, 160 acres in Colfax County.

8017, Feliciano Barela, Ortiz, Colorado, E 1-2 NE 1-4, section 21, T 30 N, R 7 E, 160 acres in Rio Arriba County.

8018, Roman Cruz, Ortiz, Colorado, E 1-2, NE 1-4, section 9, T 30 N, R 7 E, and W 1-2, NW 1-4, section 10, T 30 N, R 7 E, 160 acres in Rio Arriba County.

**Final Homestead Entries.**

Final homestead entries have been made in the United States Land Office as follows:

3381, Edward M. Keenan, Springer, S 1-2, NE 1-4, section 10, T 26 N, R 24 E, and S 1-2, NW 1-4, section 10, T 26 N, R 24 E, and S 1-2, NW 1-4, section 10, T 26 N, R 21 E, 160 acres in Colfax County.

3382, Manuel A. Gonzales, Sanchez, SE 1-4, SE 1-4, section 22, T 15 N, R 24 E, and lot 3, section 23, and NW 1-4, NW 1-4, section 26, and NE 1-4 NE 1-4, section 27, T 15 N, R 24 E.

First class short order meals at the Bon Ton.

**\$390 FOR LETTERS ABOUT****THE SOUTHWEST.**

The Rock Island system offers 20 prizes, of the aggregate value of \$390, for letters relative to the territory along its lines in Arkansas, Kansas, Indian Territory, Oklahoma, Texas and New Mexico. Letters should deal with the writer's experiences since he settled in the southwest. They should tell how much money he had when he arrived, what he did when he first came, what measure of success has since rewarded his efforts and what he thinks of that portion of the country in which he is located. Letters should not be less than 300 nor more than 1,500 words in length and will be used for the purpose of advertising the southwest.

Letters are desired not only from farmers and farmers' wives, but also from merchants, school teachers, clergymen; from everyone, in brief, who has a story to tell and who knows how to tell it.

For circular giving details, write John Sebastian, passenger traffic manager, Rock Island system, Chicago, Ill.

**"The Most Delicious**  
**ICE CREAM!**

I Have Ever Eaten In Santa Fe!"

Is the Verdict of All Who Have Tasted Our

**ICE CREAM SODA**

This Year.

**THEREFORE IT MUST BE SO.**

Among our new flavors are

TUTTI FRUTTI

CHOP SUEY

CREAM COCOANUT

Come and Try Them

**FISCHER DRUG CO.**

230 San Francisco Street : Santa Fe, N. M.

**QUAY COUNTY NOTES.**

The New Court House at Tucumcari is Completed—A Canvas Shows Likelihood of Republican Majority.

The Quay County Republican convention which was to meet on the 27th has been postponed until the 15th of September. The date of the primaries has also been postponed from the 30th of August to the 8th of September, in order to give the candidates more time to cover the county.

Donald Stewart, manager of the Gross Kelly Mercantile store here, is in Las Vegas this week on business.

The outside work of the new Quay County court house is now finished. It is built of native stone at a cost of \$15,000, and it is the pride of Quay County.

Dr. James A. Tomlinson, chairman of the Quay County Republican central committee, is making a strong effort to determine the political complexion of this county before the election, and he is now of the opinion that it will go Republican by a small majority.

The Dawson railroad is preparing to sink a deep well here to supply it with water, which they now get from the Rock Island wells.

Beginning June 1st the Denver & Rio Grande names rates from Santa Fe as follows:

To Pueblo and return, \$17.55.

To Colorado Springs and return, \$19.55.

To Denver and return, \$22.55.

To Glenwood Springs and return, \$28.55.

Limited to 30 days from date of sale, stop over privilege at and north of Pueblo. Final limit October 31st. F. H. McBride, agent.

The New Mexican bindery has the best and has the most modern equipment in its line in the southwest. The work turned out by it is superior to any in all this section of the country and bankers, merchants and business men generally who desire books, such as cash books, day books, ledgers, account books of all kinds for the coming year will do well to address the New Mexican Printing Company for prices and samples. Satisfaction guaranteed.

The Santa Fe announces a round trip rate to Portland, Oregon, of \$45.75, account of the annual mining congress to be held there August 22 to 27.

Try a New Mexican want "ad."

Cloudcroft, "Nature's Poof Garden." Season June 18 to September 30, 1904.

**JACOB WELTMER**

BOOKS, STATIONERY, MAGAZINES, PERIODICALS.

Headquarters for

**SCHOOL SUPPLIES****Fine Confectionery and Cigars**

208 San Francisco St.

Santa Fe, N. M.

**SCIENTIFIC EMBALMING**

At Our Up-to-Date

**Undertaking Parlors**

The Latest Scientific Methods of Embalming are Employed. Calls Answered from the Parlors Day or Night or by DOROTEO SENA, Agent. Our Parlors Consist of a Nicely and Appropriately Fitted Up Suite at No. 128 Lincoln Avenue, West Side Plaza, Santa Fe, New Mexico.

ALL KINDS OF PICTURE FRAMING.

**DUDROW & MONTENIE**

FINE MONUMENTS TO ORDER.

**GOLD'S OLD CURIOSITY SHOP**

**CLOSING**  
**OUT**  
**SALE!**

Wishing to retire from business I will sell my entire stock of  
**INDIAN and MEXICAN BLANKETS, POTTERY BASKETS, DRAWN WORK, CURIOS, ETC.**

At less than Cost.

**TOURISTS:**

Do you know that you miss half of Santa Fe if you do not visit our Curio Store & Free Museum.

Sign of the Old Cart

Send for Catalogue

Cor. San Francisco Street and Burro Alley