

9-12-1903

Santa Fe New Mexican, 09-12-1903

New Mexican Printing Company

Follow this and additional works at: https://digitalrepository.unm.edu/sfnm_news

Recommended Citation

New Mexican Printing Company. "Santa Fe New Mexican, 09-12-1903." (1903). https://digitalrepository.unm.edu/sfnm_news/1754

This Newspaper is brought to you for free and open access by the New Mexico Historical Newspapers at UNM Digital Repository. It has been accepted for inclusion in Santa Fe New Mexican, 1883-1913 by an authorized administrator of UNM Digital Repository. For more information, please contact disc@unm.edu.

THE GEM CITY OF THE PECOS VALLEY

Homeseekers and Investors Are Crowding Into Roswell, Capital of Chaves County, and Are Rapidly Developing the Resources of the Country Along All Lines--Perfect Climate, Rich Soil, an Abundance of Water Make This One of the Most Attractive Spots on the Continent for the Farmer and Fruit Raiser.



HOG RAISING IN ROSWELL ORCHARD COUNTRY.

Despite the loss of 1,255,400 acres of good land in the creation of the new county of Roosevelt from its area, statistics in the assessor's office show that land values in Chaves County have increased so much during the past year that the total land valuation is practically the same as last year. A great increase in property values of all kinds over last year is shown and is the best evidence of the solid and substantial prosperity, growth and expansion of the county.

The reason for this increased valuation is not far to seek. Homeseekers and investors are crowding in thick and fast and are developing the resources of the country along all lines. The perfect climate, the rich soil and the exhaustless supply of water bubbling out of the ground from great springs and rivers or to be reached by artesian wells are attracting these settlers and will continue to do so. The Pecos valley is especially favored by nature and the advertising of these natural advantages and the proving of all the claims advanced are attracting and holding a class of settlers that will prove a lasting benefit to the section and Territory. Only within recent years have efforts been made to bring the merits of this section before the people in an attractive way and now in a legitimate way--fair statements and a proof by facts upon investigation.

Value of Assessments.

The total tax due June 1, 1903, was \$85,983.07 based upon the following assessment:

Value of land.....	\$ 495,768
Value of improvements.....	483,139
Total, land and improvements.....	978,907
Value of cattle.....	1,035,076
Number of sheep.....	175,032
Value of personal property.....	1,926,598
Roswell incorporation.....	602,691
Total assessed valuation.....	2,789,377

For the coming year the land valuation will remain about the same, while the valuation of improvements and personal property will show a large increase. The number of sheep will be increased, while the number of cattle will probably decrease on account of the curtailment of the range by homestead entries and extensive farming, breaking up the large ranches into smaller farms and by recent shipments made by large cattle owners to Canada and other parts of the Territory which have greater open range.

The United States land office statistics, recently compiled, show that Chaves County embraces in its present limits 5,351,106 acres of unappropriated government land, of which 3,334,433 have been surveyed and 2,016,673 remain unsurveyed. In addition 3,280 acres have been reserved and 919,214 acres have been appropriated

by settlers making the total area of the county 6,273,600 acres. During the past year 67,749 acres have been appropriated under the homestead law and 21,990 under the desert claim law; 226,210 acres have been appropriated as lieu or scrip selections and 38,182 acres as territorial selections. Thus 354,131 acres of government land have been taken up in Chaves County during the past year by actual settlers and investors under the stringent entry laws of the government. These facts need no comment, as they prove conclusively the growth and the character of that growth.

Great Growth of Roswell.

The growth of Roswell during the past year has been simply marvelous. Although it has been rapid and startling in its extent there have been no symptoms of a boom or undue inflation of values. It seems to be solid, substantial and permanent, auguring well for the future. The city has now on a conservative estimate at least 6,000 inhabitants and houses for business and residence are being constructed so fast that many workmen are kept busy and the demand can hardly be supplied. Settlers are coming in so fast that it taxes the memory of the older inhabitants to keep track of their new acquaintances and neighbors. A census will soon be taken. (Continued on Page Six.)

SUNMOUNT SUNSHINE

Santa Fe's Attractive Suburb Bringing Healthseekers and Tourists to the Capital.

MODERN IMPROVEMENT

Sure to Become the Most Noted All-the-Year-Around Resort in the Southwest.

"Sunmount!" There is witchery in the very name. Bathed in the genial rays of a perpetual sunshine, the Tent City lies. Sheltered from the northern blasts by the Sangre de Christo range, the Magic City spreads itself upon the mesa at the base. Beyond and below stretches the fertile valley and plain. Vision alone limits the view. To the north and west lies the Ancient City, and the western landscape is bounded by the lofty peaks of the Jemez range. To the south, one can trace the gentle incline so characteristic of the Sandias and just beyond appear, in marked profile, the Manzanos. The outlines of the Coyote hills and the Ortiz range are plainly marked, against the azure of a cloudless sky, while far away to the south one can follow the rugged outlines of the Oscuras as they rise from out the plains beyond Socorro. Let the eye follow a little to the east and the Gallinas, in Lincoln County, a hundred and thirty miles away, are plainly discernible. The wonderful clearness of the air seemingly locates the Cerrillos hills with their hidden wealth within a few miles, and these solitary cone-shaped hills break the monotony of the vast expanse of level plain. Cedar and pinon cover the mountain side, exhaling odors balsamic; life-giving to the invalid and invigorating to the well.

This is Sunmount, the Tent City, the Magic City that has sprung into existence seemingly in a day. Its tented streets are in conformity with those of the modern city and the wide avenues are graded and piped, and purest water is supplied.

Naturally the climatic and other advantages are attracting a constantly increasing number of visitors and inquiries to Santa Fe. The Ancient City has a hundred and one points of interest for the tourist. The oldest city in the country boasts of many attractions that none other can offer and is replete with historic interest. But Santa Fe, the capital city of the Territory, is not alone of the past. She has shared the progress and development of the country. She is modern as well. Nor is this condition of affairs lost on the health-seeker or the tourist, and here ample accommodations are afforded.

The suburb of Sunmount, however, is modeled somewhat on the lines of the famous Tent City at Coronado Beach and is designed for the health-seeker, the tourist and the transient visitor, as well as the permanent inhabitant. This addition to the city of Santa Fe comprises an area of some sixty-five acres and the plat of the city follows the conventional lines. A portion has been laid off in building lots and many of these have already been sold to eastern parties who, knowing the incomparable climatic conditions, intend to make Sunmount their summer or their winter home. Ample gardens, wide avenues, with complete system of water mains and sewerage, telephone service and all other modern conveniences are among the many attractions of Sunmount. It is the intention of the management to erect in the near future a casino and other buildings supplemental to the general plan for the further beautifying and enhancing the attractiveness of this unique resort. As has been said, Sunmount, while protected from wind and dust, is not shut out from constant sunshine. The attributes for regaining health are ideal. Outdoor life in the purest air, in almost perpetual sunshine, and with perfect conditions of weather, with an altitude best adapted and surroundings most helpful to the complete restoration of health and best tending to the curing of throat and pulmonary troubles.

And this is Sunmount, destined, without doubt, to become one of the most noted of southwestern resorts, but as yet so little known. In a recent conversation, one of the representative men of the Territory took occasion to not only express his great surprise over, but to note as well the fact that so few people knew of, this resort which he characterized as "incomparable." Said he:

"The people of the Territory really do not know the advantages and many attractions that are theirs. I have traveled throughout New Mexico and have found nothing like the entrancing view that is afforded from Sunmount. It is unrivalled. It is a scene of incomparable splendor. The location is ideal and I think it only a matter of a few years until Sunmount

MINING CONGRESS.

Organization Thanks President Roosevelt for Sending Secretary Shaw to Represent Him.

Deadwood, S. D., Sept. 12--The American Mining congress held a most interesting session during the entire day. The secretary read a number of letters of regret and congratulation from many distinguished individuals who received invitations to attend the congress, among whom was President Roosevelt. A committee was appointed to draft a resolution of thanks to President Roosevelt for his recognition of the American Mining congress by sending Secretary Shaw to represent him.

The committee's report was adopted by a rising vote. The committee on nominations recommended the following ticket which will doubtless be accepted without a change by the congress: Directors for the ensuing year--Hon. J. H. Richards, Boise, Idaho; Col. Thomas Ewing, San Francisco; Richard C. Patterson, Omaha; Hon. John T. Grayson, Portland, Ore.; Col. Edward F. Brown, Aspen, Colo.; Dr. E. R. Buckley, Rolla, Mo.; Dr. Joseph A. Holmes, Raleigh, N. C.; James Lynch, Butte, Mont., and John Gray, Terrville, S. D. Officers--President, Hon. J. H. Richards, Boise; first vice-president, Col. Thomas Ewing, San Francisco; second vice-president, Richard C. Patterson, Omaha; third vice-president, Col. John T. Grayson, Portland, Ore.; treasurer, Thomas King Muir, Portland, Ore.; secretary, Irwin Mahon, Carlisle, Pa.

Several resolutions were adopted, among which is one to recommend to the legislatures of several states and territories the enactment of laws to afford better protection to persons employed in and about mines.

POPE RECOMMENDS

AMERICAN UNIVERSITY. Rome, Sept. 12--The pope today sent Rev. Dennis R. McConnell, rector of the Catholic university at Washington, a cordial letter containing a brief in favor of that university. The pope warmly recommends the university to the support of the whole people of the United States, trusting in their generosity to enable it to accomplish its object--"to maintain and augment the intellectual supremacy of America."

SHOOTING FOR THE

RIFLE CHAMPIONSHIP. Seagrit, N. J., Sept. 12--Sixty expert riflemen competed for the military championship of the United States. The contest was the president's match, open to all members of the army, navy, marine corps, naval reserve and state militia. The distances were 200, 300, 500, 600, 800 and 1,000 yards, seven shots at each distance.

DAUGHTER OF REVOLUTION

DIES IN WASHINGTON. Chicago, Sept. 12--Mrs. Georgia S. Hatcher of Washington, D. C., corresponding secretary of the Daughters of American Revolution, is dead in this city. She recently came here from Arizona where she had gone in search of health.

ADMIRAL DEWEY HAS

BRILLIANT RECEPTION. Saratoga, N. Y., Sept. 12--The reception to Admiral Dewey at the Saratoga club was one of the most brilliant events of the season, distinguished men from all parts of the country assisting the citizens' committee in doing honor to the guest.

will become one of the greatest attractions of the Territory and a resort for health and pleasure seekers. In Sunmount is promised what the Territory has long needed and desired in the way of a pleasure resort. The altitude is sufficient to insure a cool and delightful season, even through the hottest months. The water is the purest and direct from mountain streams; the air, the most invigorating, and the surroundings leave little to be desired.

Then there is indeed a bright future for the Tent City. It is the intention of the management to make such innovations and improvements as will be most conducive to the comfort and well-being of the residents of this delightful suburb. The outlay of large sums of money is contemplated and these improvements will be made as rapidly as possible. The contract for a large and commodious brick hotel will soon be let and the work on its construction will begin in the near future. This building will be ready for the coming season. It is also the intention to have a herd of Jerseys located on a dairy farm near Sunmount and the contract for stables and also for a modern poultry yard have been let during the past week. In Sunmount is afforded all the benefits of an outdoor life, while its close proximity to Santa Fe provides all the advantages of the city. Easy of access and with its excellent rail, mail, telegraph and telephone facilities, Sunmount is destined, as has been said, to become one of the greatest attractions of the Territory."

WAR CLOUD DARKENING

Bulgarian Ministers Decide to Mobilize First and Second Divisions of Army.

60,000 SLAUGHTERED

District of Monastir Has Been Devastated and Christians of Both Sexes Massacred.

Sofia, Sept. 12--A council of the ministers is said to have decided to mobilize the first and second army divisions. Alarming rumors are current of the further wholesale massacres of Bulgarians in the Villyet, Monastir. One report says that 60,000 persons have been slaughtered in the district of Leren alone, which is purely Bulgarian. Other reports affirm that the Turks have burned the Christian quarters in the towns of Florine, Oskilda and Reson.

Put to the Sword.

London, Sept. 12--The Salonica correspondent of the Times, after visiting Monastir, reports: "There is reason to fear that the country has been absolutely devastated and all the Christians of both sexes and all ages who failed to find refuge in the woods have been put to the sword."

STATEMENT OF THE

CLEARING HOUSE BANKS.

New York, Sept. 12--The statement of averages of the clearing house banks of this city during the week of five business days, shows: Loans, \$926,568,800; increase, \$2,167,000; deposits, \$918,195,600; increase, \$24,300; circulation, \$44,198,800; increase, \$927,400; legal tenders, \$72,852,900; decrease, \$1,240,900; specie, \$172,068,200; decrease, \$367,800; reserve, \$244,921,100; decrease, \$1,908,700; reserve, required \$229,548,900; increase, \$16,705; surplus, \$15,372,200; decrease, \$1,924,775; United States deposits \$24,693,325; decrease, \$1,912,000.

MANUFACTURERS SUE

LABOR ORGANIZATIONS.

Bridgeport, Conn., Sept. 12--In the United States District court today D. E. Loewe & Co., the Danbury hat manufacturers, instituted suits against the national officers of the American Federation of Labor, the national officers of the United Hatters of North America, and 250 members of these organizations who were formerly in the employ of the plaintiffs for \$240,000 damages on account of a boycott against their goods. The suit is brought under the Sherman anti-trust law.

CONDITIONS AT BEIRUT

GRADUALLY IMPROVING.

Washington, D. C., Sept. 12--Minister Leishman, under date of yesterday, cables that by command of the Sultan the governor-general of Beirut was dismissed and Nazim Pasha from Damascus was appointed in his place. The conditions in Beirut according to Minister Leishman's advices are improved and the new governor has expressed a desire to treat the Magelsen matter promptly and satisfactorily.

HERDED CATTLE ON

WITHDRAWN LAND.

Moscow, Idaho, Sept. 12--United States District Attorney Crozier has brought suit in the Federal court against twenty prominent stockmen in southeastern Idaho who are alleged to have herded many sheep and cattle upon land withdrawn from entry, pending the proposal to include them in the Pocatello forest reserve to protect the water supply of that city.

WOMEN AFTER

SMOOTH'S SCALP.

Chicago, Ill., Sept. 12--The Record-Herald says that the National Woman's Christian Temperance union began its campaign for the expulsion of Senator Reed Smoot of Utah from the United States Senate as a polygamist and a "violin of the laws of his own state." Petitions will be circulated all over the country by the local branches of the union.

HEAVY SNOW STORM

ALL OVER COLORADO.

Denver, Colo., Sept. 12--One of the heaviest storms of the year prevailed last night in this state. Snow lies deep on the mountains. In some places in southern Colorado the rain fall amounted to an inch. In the valleys the weather is unseasonably acid and much garden truck is killed.

HOLD-UPS SHOOT

BUT GET NO MONEY.

Clay Center, Kan., Sept. 12--Two unknown highwaymen last night held up several persons here. "Dad" Stevens, J. W. Houser, Night Watchman Bush and Louis Behrns, who resisted, were shot and severely wounded. The bandits got no money.

ARRESTING STRIKERS.

Member of Executive Committee of Miners' Union Taken from His Home at Midnight.

Cripple Creek, Sept. 12--Sherman Parker, a member of the executive committee of District union No. 1, and a prominent strike leader was taken from his home at Independence at 1:30 this morning by a squad of troops under the command of Lieutenant McClelland and placed in the guard house at Camp Goldfield, where several other strikers are kept prisoners, among them being James Lafferty. At military headquarters no statement was given out about the cause of the arrest of Parker beyond a statement that he attended a meeting of strikers at Altman last night.

WOMAN WILL LIVE,

HUSBAND IS DEAD.

Denver, Colo., Sept. 12--Physicians say that Mrs. Viola Hayden, who was shot in the right side last night by her husband, Henry M. Hayden, at her home, 4634 West Thirty-fourth avenue, will probably recover. After shooting his wife Hayden killed himself. The couple were separated and Hayden was said to have been jealous of his wife.

MANILA TRANSPORT

BRINGS BACK BODIES.

New York, Sept. 12--The United States transport Kilpatrick arrived from Manila today with the bodies of 300 United States soldiers who lost their lives in the Philippine islands.

ALL IN LINE FOR SANTA FE

Board of Trade Gets Down to Business and Does Some Active Work.

A SOLDIERS' HOME

Committee Appointed to Confer With General Black and Endeavor to Get His Endorsement.

The efforts that have been made for some time to secure for this city a soldiers' home will be renewed on the occasion of the visit to Santa Fe of General John C. Black. At the meeting of the Santa Fe board of trade last evening there was a committee appointed to wait on General Black and to use all effort to secure his support for the scheme. The committee will call on the distinguished veteran and leader and will present to him the many advantages that Santa Fe offers as a site for such an institution. The committee is composed of the following gentlemen: Col. G. W. Knaebel, chairman, Mayor Ishmael Sparks, Major Fred Muller, Judge A. L. Morrison, S. G. Cartwright, W. N. Townsend and E. A. Flske, Esq.

The regular monthly meeting of the Santa Fe board of trade was held in Continued from Page 4.

WANTS TO HOLD OFF.

Russia Asks China for Permission to Keep the Door Closed for Short Time.

Washington, Sept. 12--Russia has requested the permission of China to postpone her evacuation of one of the frontier provinces of Manchuria for several months after October 8, the date set for the general evacuation of Manchuria. Minister Conger has cabled the fact. The state department apparently is not concerned over the matter as the province is only a small one and the postponement asked is for only a short time.

Will Ask China to Wait. Washington, D. C., Sept. 12--This government has received satisfactory assurances from St. Petersburg that the general evacuation of Manchuria will occur October 8. It is said to be for China to say whether or not the request for postponement as to a particular province shall be granted.

THE FRENCH HURRY

CRUISER TO TURKEY.

Paris, Sept. 12--It has been decided to send the cruiser Latouche Trouville to Turkish waters without waiting for the other ships ordered to be in readiness to sail for the Levant.

EIGHT INCHES OF SNOW

IN SOUTHERN MONTANA.

Red Lodge, Mont., Sept. 12--Southern Montana is covered with about eight inches of snow which fell last night. Considerable grain which was still standing is probably ruined.

SANTA FE NEW MEXICAN

THE NEW MEXICAN PRINTING COMPANY, PUBLISHERS

MAX. FROST Editor
PAUL A. F. WALTER Associate Editor
CHARLES M. STAUFFER .. Manager

Entered as Second Class matter at the Santa Fe Postoffice.

The New Mexican is the oldest newspaper in New Mexico. It is sent to every postoffice in the Territory, and has a large and growing circulation among the intelligent and progressive people of the Southwest.

RATES OF SUBSCRIPTION.

Daily, per week, by carrier.....	25
Daily, per month, by carrier.....	\$1 00
Daily per month, by mail.....	75
Daily, six months, by mail.....	4 00
Daily, one year, by mail.....	7 50
Daily, three months, by mail.....	2 00
Weekly, per month.....	25
Weekly, per quarter.....	75
Weekly, six months.....	1 00
Weekly, per year.....	2 00



GOVERNOR OTERO'S ANNUAL REPORT FOR 1903.

The annual report of Governor Otero to the secretary of the interior was sent to Washington Thursday, considerably earlier than in previous years. The report is more concise, more accurate and more systematic in its arrangements than in former years. It covers 1,326 type written pages and gives a comprehensive view of all the activities and interests of New Mexico and its people. For convenience sake it is divided into four parts, the first part reviewing general conditions in the Territory during the past year and describing in detail the resources, industries, attractions and advantages of each of the twenty-four counties and, under a separate heading, of the forty principal towns of the Territory. Part II is devoted to articles by specialists upon subjects of interest to New Mexico and its people, the subheadings being as follows: "Agriculture in New Mexico"; "Horticulture in New Mexico"; "New Mexico Sugar Beets"; "Tobacco in New Mexico"; "Range Grasses in New Mexico"; "New Mexico Livestock Interests for the Year 1903"; "Experiments in Pumping for Irrigation"; "Irrigation in New Mexico"; "Climate and Consumption"; "Geological Formations of New Mexico"; "The Mineral Production of New Mexico"; "List of Mining Claims in New Mexico Which Have Been Officially Surveyed"; "Railroads in New Mexico"; "Population"; "New Mexico Bar Association"; "Fort Wingate"; "Archaeology"; "Ancient Aztec Ruins in San Juan County"; "Navajo Blankets"; "Mining in New Mexico"; and "The Only Court of Its Kind in the World."

Part III includes the reports of every Territorial official, of every Territorial board, of every Territorial institution, of the Territorial Supreme court and of the clerks of the five judicial districts. Part IV is given to the reports of United States officials in New Mexico including the Court of Private Land Claims, the Sanitariums at Fort Stanton and Fort Bayard, the Indian service and the Indian schools and the forest reserves. In conclusion is given a statistical synopsis which condenses in a few pages the statistics included in the 1,320 pages of the report.

Governor Otero deserves great praise for going to the labor, trouble and expense of compiling so comprehensive a report which is a very epitome of New Mexico and which answers any reasonable question that may be asked concerning the Territory. Its statistics are right up-to-date and the showing it makes for the Territory is bound to bring capital and immigration. Unfortunately, a recent order of the secretary of the interior precludes all illustrations, but the report will probably contain the new map now in course of preparation by the general land office at the national capital.

WHY NEW MEXICO SHOULD HAVE STATEHOOD.

For nearly three score years the people of the Territory of New Mexico have been knocking at the doors of Congress for statehood, and its delegates during that period have worked with untiring zeal to bring about the realization of this much coveted right. Perhaps none have worked harder in this direction than the Hon. B. S. Rodey, the present delegate to Congress, who, during the Fifty-seventh Congress, laid awake nights devising plans whereby he could be heard on the statehood question. And what was the result? An omnibus statehood measure giving to the territories of New Mexico, Arizona and Oklahoma statehood was passed in the lower house of Congress, practically unanimous, there being but three votes against it, only to be held up in the United States Senate, not only depriving the people of the three territories of their much coveted and just rights, but blocking much needed legislation in other directions. The demand made by the people of New Mexico is a fair and consistent one. This demand was recognized by the legislators in both branches of Congress as far back as 1876 and if the Territory with the meager resources it had then was a fit apostle for statehood, the

statehood proposition as laid before the national legislators today is an unquestionable right. And why delay the granting of statehood longer? The political complexion of the state from a Republican standpoint is practically assured for years to come, if the present administration will recognize the rights of the people of the Territory of New Mexico and devote less time and attention to the people of our insular possessions. The Territory is abundantly able to take on the form of statehood and relinquish the present territorial government. The creation of one state out of the area comprised in the territories of New Mexico and Arizona, whereby New Mexico will lose its identity, and the combined area be known as the state of Arizona is obnoxious to many thinking residents of the Territory. And what would it mean? Simply that New Mexico would have to bear the burden of the sins of Arizona, and if in the immediate future or even in the years to come the Democrats were to gain supremacy, New Mexico would have to share the responsibility for such a condition of affairs. The granting of statehood to New Mexico as an independent state would practically insure its representatives in both houses of Congress remaining throughout the years to come on the Republican side. Let us have statehood; the sooner the better, and the concerted effort of the people of the Territory during the Fifty-eighth Congress can be none too strong.

The city of Santa Fe is growing slowly but surely and steadily. The right kind of progress, this.

Lillian Russell is not in it with some Indiana women. One of these is just now suing for a divorce from her nineteenth husband.

Russia may evacuate Manchuria on some October 8th, but it does not look as if she would do it this year of our Lord. October 8, 2193, may be the day, however.

The New York Sun is seventy years old and is still very strong and healthy. Indeed the paper bids fair to live a great many years and it is certainly improving in every respect with age.

The Chicago Chronicle insists that Mr. Cleveland must be nominated by the Democracy at the presidential election next year. This ought to settle it, but nevertheless and notwithstanding, it does not look as if it will.

The coal production of this Territory is steadily on the increase. As these coal deposits are practically inexhaustible, it can safely be asserted that within ten years New Mexico will rival the Keystone state in the production of coal.

The several politicians who expected to be appointed to pet jobs as commissioners of the Panama canal, had the canal treaty been ratified by the Colombian senate, are taking a very gloomy view of the situation. They should not be so sad. They ought to know that in politics "there is many a slip 'twixt the cup and the lip."

The most equable, health-giving, health-preserving and health-restoring climate on this whole continent is right here in the Capital City of New Mexico. Climatological facts furnished by weather bureau observers for the past thirty years and the evidence of reputable and skilled physicians all over this country and in Europe fully and unequivocally demonstrate this fact.

Railway mail service should be established on the Santa Fe Central railway and that without delay. The new road has opened up a section of New Mexico, which heretofore practically was inhabited simply by cattle, sheep and jack rabbits. Settlers are going into the Estancia plains in large numbers and new towns are springing up right along. These new immigrants are entitled to speedy and satisfactory mail service. The postoffice department should give such to them and that with the least possible delay.

Santa Fe County must bestir itself and commence the collection of an exhibit for the St. Louis World's fair next May. The natural resources of this county are very great and a creditable, extensive and handsome exhibit of cereals, fruit, vegetables, hard and soft coal, mineral specimens running in gold, silver, copper, lead and zinc, turquoise, several varieties of half precious stones, building stone, historical and archaeological articles, Navajo blankets, school work and of other materials could be made if the right kind of work is done for the coming six months.

The New Mexican Printing Company employs superior workmen in its several departments. Consequently it turns out superior work and should receive the patronage of those desiring "something above the ordinary," at simply a consistent rate for the character of the work turned out.

The loose leaf ledgers which are on sale at the New Mexican office, are rapidly growing in favor. It is the best patent that has been issued and the saving to the business man in not carrying a book of dead pages is considerable. For convenience and economy and for keeping the book up to the mark with live accounts only, the loose leaf ledger is the best arrangement yet issued.

WHEN LIFE'S AT STAKE

The most timid man will take any chance of escape. The slender rope dropped down the precipice, the slippery log over the abyss, anything that offers a chance of life, is eagerly snatched at. The end the man seeks is safety. He cares nothing for the means to that end.

There are thousands of men and women whose lives are at stake, who are hindered from accepting the one means of safety by foolish prejudice. Doctor Pierce's Golden Medical Discovery has been the means of restoring health to many men and women whose hollow cough, bleeding lungs, emaciation and weakness seemed to warrant the statement of local physicians—"There is no cure possible."

Why should prejudice against a put-up medicine hinder you from trying what has cured thousands of suffering men and women? "Only for Dr. Pierce's Golden Medical Discovery I think I would be in my grave to-day," writes Mr. Moses Miles, of Hilliard, Vinton Co., Wyoming. "I had asthma so bad I could not sleep at night and was compelled to give up work. It affected my lungs so that I coughed all the time, both day and night. My friends all thought I had consumption. My wife had taken Dr. Pierce's Favorite Prescription and it had helped her so much she insisted on my trying his 'Golden Medical Discovery'—which I did. I have taken four bottles and am now a well man, weighing 185 pounds, thanks to Dr. Pierce's Golden Medical Discovery."

The sole motive for substitution is to permit the dealer to make the little more profit paid by the sale of less meritorious medicines. He gains; you lose.

COLORADO-NEW MEXICO FAIR.
Durango, Colo., on September 21 and 22 the D. & R. G. railroad will sell tickets good to return until September 29. See posters for particulars.
J. B. DAVIS, Agent.

CERTAIN RESULTS.

Many a Santa Fe Citizen Knows How Sure They Are.

Nothing uncertain about the work of Doan's Kidney Pills in Santa Fe. There is plenty of positive proof of this in the testimony of citizens. Such evidence should convince the most skeptical doubter. Read the following statement:

Mrs. J. C. Hull (J. C. Hull, carpenter and contractor) of Johnson st., says: "Three years ago a physician told me he did not think I would ever recover from an attack of dropsy. I did, but since then I have frequently puffed about the eyes, in the hands, feet and limbs. I suffered from backache so severely and acutely that it was impossible to sit up. It is at least eleven years since I first noticed a tendency toward dropsy and I had given up all hopes of ever being helped, let alone cured. An advertisement about Doan's Kidney Pills induced me to go to Ireland's Pharmacy for a box. If kidney pills had not brought undoubted relief I never would have bought a second nor a third, and if the treatment of three boxes had not driven away the last attack, I would be the last resident to publicly endorse the means employed, namely Doan's Kidney Pills."

For sale by all dealers. Price 50 cts. Foster Milburn Co., Buffalo, N. Y., sole agents for the United States. Remember the name, Doan's, and take no substitute.

LOW RATES

From June 5 to October 15 the Denver and Rio Grande Railroad will sell summer excursion tickets to points named at the following low rates: Santa Fe to Pueblo and return, \$17.55; Santa Fe to Colorado Springs and return \$19.55; Santa Fe to Denver and return \$23.55; Santa Fe to Glenwood Springs and return (via Salida and Leadville) \$28.65. Final return limit Oct. 31st, 1903. At all points except Glenwood Springs a fee of 25 cents is charged when tickets are executed for return passage. Stopovers allowed north of Pueblo and stopovers allowed west and south of Pueblo either direction, for parties desiring to make the following side trips at one fare for the round trip, viz: From Salida to points between Gunnison and Cimarron; from Alamosa to points on Creede Branch; from Antonito to Pagosa Springs. For any further information, sleeping car reservations etc. call on or address J. B. DAVIS, Agent.

CHICHESTER'S ENGLISH PENNYROYAL PILLS
Genuine and Only Genuine.
SAFE, Always reliable. Ladies, use Druggists for CHICHESTER'S ENGLISH PILLS in RED and Gold metallic boxes, sealed with blue ribbon. Take no other. Refuse Dangerous Substitutions and Imitations. Buy of your Druggist, or send 4c. in stamps for "Pill Book" and Testimonials. Mail 10,000 Testimonials. Sold by all Druggists. Chichester Chemical Co., London, England. PHILA., PA.
Mention this paper.



THE OXFORD CLUB

J. E. LACOME, Prop.

The Most Popular Place of Entertainment in City of Santa Fe.

Everything Up-to-Date. The Finest Brands of Wines and Liquors. The Best Imported and Domestic Cigars. Luxurious Club Rooms. A Cordial Invitation and Courteous Treatment Extended to Everybody. Drop in and See for Yourself.

San Francisco Street, Santa Fe, N. M.

A. F. SPIEGELBERG
226 San Francisco St., South Side of Plaza.

Indian and Mexican Wares and Curios

Blankets, Baskets, Pottery, Rag, Wax, Feather and Linen
Drawn Work. Opals, Turquoises, Garnets and Other Gems.

SPECIALTY
To have the best of everything in the line.

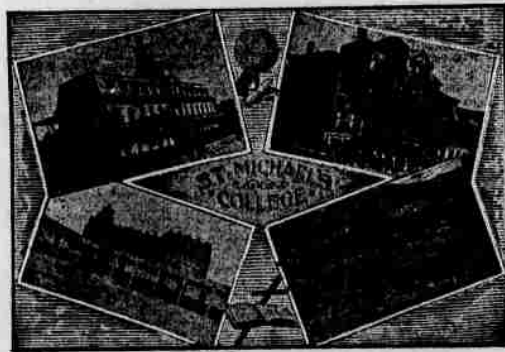
B. HANLEY

San Francisco Street, Santa Fe, New Mexico.

DEALER IN
W. M. McBRAYER, OLD CROW and OLD OSCAR PEPPER KENTUCKY WHISKIES.
OVERHOLT and GUCKENHEIMER PENN RYE WHISKY.
IRISH and SCOTCH WHISKIES
AND DISTILLERY BOTTLED WHISKY.
FRENCH COGNAC and HOLLAND GIN.
CALIFORNIA WINES and BRANDY.
GUINNESS'S PORTER and BASSES' ALE.

ST. MICHAEL'S COLLEGE.

Santa Fe, New Mexico.



THE 45TH YEAR BEGINS SEP. 1, 1903.

The College is empowered by law to issue FIRST-CLASS TEACHERS' CERTIFICATES to its Graduates, which Certificates are to be honored by School Directors in the Territory of New Mexico.

BRO. BOTULPH, President.

A. P. HOGLE

Undertaker and Funeral Director

GALISTEO STREET

Best of Reference Given as an EMBALMER. Night Calls

RESIDENCE PHONE 141.

"Manitou" Sarsaparilla
"Manitou" Mineral Water
"Manitou" Ginger Champagne...

Pure Crystal Ice
Delivered Free to All Parts of the City. Satisfaction Guaranteed

GRANT RIVENBURG, Proprietor.

LEO HERSCH...

WHOLESALE and RETAIL DEALER IN
FLOUR, RAY, GRAIN, POTATOES, SALT and SEEDS.

Only Exclusive Grain House in City

PROFESSIONAL CARDS.

Attorneys at Law.

MAX. FROST,
Attorney at Law, Santa Fe, N. M.

GEO. W. KNAEBEL,
Office in Griffin Block. Collections and searching titles a specialty.

EDWARD L. BARTLETT,
Lawyer, Santa Fe, New Mexico. Office in the Capitol.

EUGENE A. FISKE,
Attorney and Counselor at Law, Santa Fe, N. M.
Supreme and District Court Practice.

BENJAMIN M. READ,
Attorney-at-Law,
Santa Fe, N. M.
Office Sena Block. Palace Ave.

WILLIAM MCKEAN,
Attorney-at-Law.
Practice in all the Courts, Taos, N. M.

W. J. McPHERSON,
Attorney-at-Law. Practices in all the Courts in the Territory. Santa Fe, New Mexico.

WILLIAM H. H. LLEWELLYN,
Attorney-at-Law.
Las Cruces, New Mexico,
District attorney for Dona Ana, Otero, Grant, Luna and Sierra Counties.
Third Judicial District.

CHAS. F. EASLEY,
(Late Surveyor General.)
Attorney-at-Law, Santa Fe, N. M.
Land and mining business a specialty.

E. C. ABBOTT,
Attorney-at-Law.
Practices in the District and Supreme Courts. Prompt and careful attention given to all business.
District Attorney for the Counties of Santa Fe, Rio Arriba, Taos and San Juan. Santa Fe, N. M.

EDWARD C. WADE,
Attorney-at-Law.
Practices in all the courts.
"Mining cases and mineral patents a specialty."
LAS CRUCES, NEW MEXICO.

FRANK W. CLANCY,
Attorney-at-Law.
(District Attorney 2d Judicial District.)
Practices in the District Courts and the Supreme Court of the Territory, also before the United States Supreme Court in Washington.
ALBUQUERQUE - - NEW MEXICO.

A. B. RENDEHAN,
Attorney-at-Law.
Practices in the Supreme and District Court, Mining and Land Law a specialty. Rooms 8 and 9, Sena Building, Palace Avenue, Santa Fe, N. M.

OSTEOPATHY

DR. CHARLES A. WHEELON,
Osteopath.
No. 103 Palace Avenue.
Successfully treats acute and chronic diseases without drugs or medicines.
No charge for Consultation.
Hours: 9-12 m., 2-6 p. m.

DENTISTS

DR. C. N. LORD,
Office, Kahn Block, over Spitz' Jewelry Store. South Side of Plaza.

C. O. HARRISON, D. D. S.,
Office: Over Fischer's Drug Store.
On the Plaza.
(Successor to Dr. Manley.)

Civil Engineers & Surveyors

DAVID M. WHITE,
Civil Engineer.
Designs and specifications for iron and stone bridges. Railroad, water works and irrigation engineering.
Office: Governor's Palace, Santa Fe, New Mexico.

JAY TURLEY,
Civil Engineer and Surveyor. Irrigation Work a Specialty. U. S. Deputy Mineral Surveyor. Santa Fe, N. M.

Notary Public, Stenographer and Type-writer. Translations
From Spanish into English and from English into Spanish carefully made. Office with U. S. Attorney for the Court of Private Land Claims, Federal Building. FRANCISCO DELGADO,
Santa Fe, N. M.

Notice for Publication.

(Homestead Entry No. 5,027)
DEPARTMENT OF THE INTERIOR,
Land Office at Santa Fe, N. M., Aug. 20, 1903
Notice is hereby given that the following named settler has filed notice of his intention to make final proof in support of his claim, and that said proof will be made before the register or receiver at Santa Fe, N. M., on September 28, 1903, viz: Cayetano Chavez for the SW 1/4, NE 1/4, NW 1/4, SE 1/4, section 7, township 9 north, range 11 east. He names the following witnesses to prove his continuous residence upon and cultivation of said land, viz: Jose Ortiz, Antonio Sandoval, Anastacio Chavez, Bernardino Chavez, all of Galisteo, N. M.
MANUEL R. OTERO, Register.

Our facilities are complete
For the prompt production of Book, Pamphlet, Catalogue, and General Printing and Binding. We do only the Best grades of work and solicit the business of firms and individuals desiring "something above the ordinary" at simply a consistent rate for the character of work we turn out. All orders promptly attended to, and estimates furnished on application
NEW MEXICAN PRINTING CO.

GO TO KAADT'S FOR

Indian and Mexican Curios.

LARGE STOCK NAVAJO BLANKETS

Our Photographic Parlors located on the second floor, one door south of our Curio Emporium, is the best fitted in the city. The very latest styles and features of the art are employed. We Have First-Class Views for Sale Wholesale or Retail.

NEW MEXICO MILITARY INSTITUTE

ROSWELL, NEW MEXICO.

THE MILITARY SCHOOL OF NEW MEXICO.

Established and Supported by the Territory.

SIX MEN INSTRUCTORS, all graduates of Standard Eastern Colleges. New buildings, all furnishings and equipments modern and complete; steam-heated, gas-lighted; baths, water-works, all conveniences.

TUITION, BOARD AND LAUNDRY, \$200 per session. Session is three terms of thirteen weeks each.

ROSWELL is a noted health resort, 3,700 feet above sea-level; well-watered. REGENTS—Nathan Jaffe, W. M. Reed, R. S. Hamilton, J. C. Lea and E. A. Cahoon. For particulars address COL. J. W. WILLSON, Supt.

TELEPHONE NO. 9.

We make a Specialty of conveying tourists to all points of interest in and near the City

LIVERY

CLOSSON'S

STABLE

Our Equipment and Stock are Unexcelled in the West, and not Equaled in Santa Fe.

DON GASPARE AVENUE.

Table Wines!

AT "OUR PLACE"

Will Be Found a Full Line of Table Wines for Family Trade. Orders by Telephone Will Be Promptly Filled.

W. R. PRICE, Prop. Santa Fe, N. M.

Wabash Route

ST. LOUIS CHICAGO DETROIT BUFFALO AND ALL EASTERN CITIES. TO FOLLOW THE FLAG: NIAGARA FALLS NEW YORK BOSTON

The Shortest and Only Line Running Over Its Own Track from Kansas City to St. Louis to Niagara Falls and Buffalo. With All Modern Conveniences.

Time and Service Unexcelled Three Solid Fast Through Trains Daily

Stop-over allowed on all tickets via Niagara Falls. Meals served in the cars. Wabash Palace Dining Cars. For further information inquire of Coupon Ticket Agents or address P. P. HITCHCOCK, General Agent, Passenger Department, DENVER, COLORADO.

Renovated and Refurnished Throughout.

Cuisine and Table Service Unexcelled

The Palace Hotel

WILLIAM VAUGHN, PROP.

Large Sample Rooms for Commercial Men. Santa Fe New Mexico

REMINGTON TYPEWRITERS

NEW MEXICAN PRINTING CO., Dealers.

Santa Fe New Mexico

WORMS! WHITE'S CREAM VERMIFUGE! For 20 Years Has Led all Worm Remedies. SOLD BY ALL DRUGGISTS. JAMES F. BALLARD, St. Louis.

MINES AND MILLS

Burro District Properties.

Owing to the new wagon road that has been built from Silver City into the Burro mining district Grant County, the trip from that city to the St. Louis mine can be made in a single horse rig in two and a half hours, the distance covered being eighteen miles. On the way from Silver City, the first camp reached is that of the Alessandro Copper Mining company. On either side of the road conveniently located are the ore bins. At the camp itself rise the foundations for the large leaching plant that is being built. A large force of men is being worked steadily on the group. A shipment of ore was made this week to the Valverde smelter in Arizona. The Comanche Mining and Milling company's property is just beyond that of the Alessandro property, farther up the canon. A good-size settlement of tents, houses, corrals and workshops now exists at this group. A large force of men is employed developing the properties. Victor Viderton is the superintendent. C. J. Laughren, one of the directors of the company, is expected at the property this week for an examination upon which will depend the future course of the enterprise. About a mile beyond the Comanche property and high on the slope lies the Virginia mine owned by Judge L. P. Deming. The Virginia has been one of the best paying properties of the district. The Samson lies two miles farther along the canon and but several hundred yards from the St. Louis. Since its sale to W. H. Clophorn, representing Canton, Ohio, and Pittsburgh capital, much development work is being done. There are five claims in the Samson group although the development work of the past few months has been confined to the Samson. This week a force of men was put to work sinking a shaft across the gulch from the Samson, from which a drift is to be run to connect the two shafts. There are at present two shafts on the Samson, one 40 feet and the other 112 feet deep, with about 300 feet of drifting, seamed with stringers of rich black sulphides. About 35 tons of high grade copper ore have been taken out and will be shipped this week to the El Paso smelter.

The Deepest Shaft.

The St. Louis mine, the deepest working in the Burro district, lies just around the hill from the Samson, in fact, the two mines are probably on the same vein. Theodore Carter, the lessee, has a lot of fine looking ore in the bins which is to be freighted to the Shamrock smelter at Pinos Altos. A cave has been removed from the drift and a fine lot of ore exposed. A great deal of preliminary work will have to be done in this drift as the drift has not been opened in a score of years and the timbers are badly decayed. The cross cutting and tunneling on the 135-foot level show up large bodies of low grade ore which would keep a concentrator running for years. In some places the walls are covered with beautiful green crystals of copper sulphate. A force of men is steadily employed taking out ore.

Up the gulch from the St. Louis, is Thompson camp where Robert Thompson is developing his claim, the McKinley. Dr. O. J. Westlake is associated with Thompson in the enterprise.

To the south and east are the properties of the Gibson Development company, the Michigan-New Mexico Copper company and the American Consolidated Copper company, all of which make excellent showings and which have been for the past two years quite thoroughly prospected. These companies are waiting for a market for or a treating plant to be installed that will handle their ores.

The Gibson Development Co. property is covered with an iron capping and on the property is to be found some very high grade iron. In several places where the capping has been cut through, copper carbonate ore has been exposed. The same is true of the Michigan-New Mexico property. All three of these last mentioned corporations are extensively interested in the Shakespeare Mining district and are devoting their attention principally to that camp.

The American Consolidated Copper company owns water rights here that are considered sufficient to operate any kind of a plant and at some future time it is believed there will be a combination of interests and a plant of sufficient capacity built to handle all of the product in this part of the camp.

For a bilious attack take Chamberlain's Stomach and Liver Tablets and a quick cure is certain. For sale by all druggists.

FEARFUL ODDS AGAINST HIM

Bedridden alone and destitute. Such in brief was the condition of an old soldier by name of J. J. Havens, Versailles, O. For years he was troubled with kidney disease and neither doctors nor medicines gave him relief. At length he tried Electric Bitters. It put him on his feet in short order and now he testifies. "I'm on the road to complete recovery." Best on earth for liver and kidney troubles and all forms of stomach and bowel complaints. Only 50 cents. Guaranteed by Fischer Drug Co.

BUCKLEN'S ARNICA SALVE.

Has world wide fame for marvelous cures. It surpasses any other salve, lotion, ointment or balm for cuts, corns, burns, boils, sores, felons, ulcers, tetters, salt rheum, fever sores, chapped hands, skin eruptions, infallible for piles. Cure guaranteed. Only 50c at Fischer Drug Co.

WHAT IS LIFE?

In the last analysis nobody knows, but we do know that it is under strict law. Abuse that law even slightly, pain results. Irregular liver means derangement of the organs, resulting in constipation, headache and liver trouble. Dr. King's New Life Pills quickly readjusts this. It is gentle yet thorough. Only 25c at Fischer's.

The Santa Fe will sell tickets to Ogden and return at the rate of \$31.15 on account of the National Irrigation congress. The dates of sale are September 12, 13, 14 and will be good for return passage until October 15.

SPRAINS.

S. A. Read, Cisco, Texas, writes, March 11, 1901: "My wrist was sprained so badly by a fall that it was useless; and after using several remedies that failed to give relief, used Ballard's Snow Liniment, and was cured. I earnestly recommend it to any one suffering from sprains." 25c., 50c., \$1. Sold by Fischer Drug Co.

Summer Tourist Rates to Colorado Points

On sale daily via the Santa Fe from June 5 to October 15, good for return passage until October 31, to Denver and return \$22.55, Pueblo and return \$17.55, Colorado Springs and return \$19.55, Glenwood Springs and return \$23.65. Stop-overs allowed at and north of Pueblo. For particulars call on any agent of the Santa Fe. H. S. LUTZ, Agent, Santa Fe, N. M.

LAND SCRIP.

By the use of so-called land script, title can be obtained to government land without cultivation or residence thereon. All you need to do is to give description and show the land to be of the proper kind; we do the rest. By reason of the exhaustion of the supply which has been quite limited the price is advancing. We have a small amount yet on hand to sell, that is fully guaranteed. We also deal in real estate, loans and investments.

HUGO SEABERG, Springer, N. M.

Notice for Publication.

(Homestead Entry No. 4,424.) DEPARTMENT OF THE INTERIOR. Land Office at Santa Fe, N. M., Sept. 10, 1903. Notice is hereby given that the following named settler has filed notice of his intention to make final proof in support of his claim, and that said proof will be made before the register or receiver at Santa Fe, N. M., on October 21, 1903, viz: Pedro Mestas, for the e1/2 n1/4, e1/2 s1/4, section 11, township 18 north, range 3 east. He names the following witnesses to prove his continuous residence upon and cultivation of said land, viz: Jose Mestas, Matias Baros, Sotero Armenta, Rosendo Gallejas, all of Perea, N. M.

MANUEL R. OTERO, Register. It is an admitted fact that real estate, financial men and merchants all say that quickest and best results are obtained by advertising in the "New Mexican."

NEW MEXICO NORMAL UNIVERSITY

LAS VEGAS, NEW MEXICO.

Will Open September 7, 1903.

The following courses are offered:

- 1.—A Sub-Freshman Course of one year, covering the common branches.
- 2.—An Elementary Normal Course of two years, leading to an Elementary Certificate. This Course covers all branches required by a first grade certificate—which is practically a Territorial certificate—in New Mexico.
- 3.—An Advanced Normal Course of four years, leading to full graduation and a Diploma. Those who have completed the Elementary Course can complete this Course in two years.
- 4.—An Academic Course of four years preparing for college or university, including technical courses and technical schools.
- 5.—A Kindergarten Course of two years, leading to a Kindergarten Certificate.

Rented text-books, at mere nominal cost, in all departments. Tuition for Normal Course reduced to \$10.00 a year. Several places for boys and girls who wish to work to defray expenses. Send for Circular of Information.

EDMUND J. VERT, President.

DO YOU SEE THE POINT

CLEAN AND SWEET EVERY MORNING. We run the only Daily Bread, Cake and Pie Delivery in the City. The Only Way is the Right Way. Enough said of the Delivery. THE QUALITY—Try Us. "The Proof of the Pudding is in the Eating Thereof."

IT WILL PAY YOU TO STEP AROUND THE CORNER FOR YOUR

GROCERIES, PROVISIONS, ETC.

Jersey Cream Flour Has Never Failed. We can sell you a Sack or Car.

GROGERS-KINSELL & CO. BAKERS

Telephone, No. 40. PROMPT DELIVERIES. Water and Galisteo Sts

CHARLES W. DUDROW,

LUMBER - SASH - DOORS

All Kinds of Building Material.

TRANSFER AND STORAGE

We Haul Everything that is Movable.

Phone 35.

SANTA FE and CERRILLOS, N. M.

INCORPORATED

H. B. CARTWRIGHT & BRO., WHOLESALE GROCERS

Grain, Flour and Potatoes Stationery, Patent Medicines and Grocers' Sundries.

PROMPT ATTENTION GIVEN MAIL ORDERS.

SANTA FE, N. M.

WINTER IS COMING!

NOW is the time to lay in your coal and get good, clean stock, and have it when you want it.

CAPITAL COAL YARDS.

V. J. BAUER, Manager.

RUSH ORDERS RECEIVE PROMPT ATTENTION.

Temporary Office with Leo Hersch. TELEPHONE, 45.

The most conveniently located and only fire-proof and steam-heated Hotel in the city.

Electric lights, baths and sanitary plumbing throughout. Everything up to date.

George E. Ellis, Proprietor

THE CLAIRE

American or European Plan

First-class Cafe and Buffet connected.

Five sample rooms for guests.

Postal Telegraph and Cable Co. Connected. SANTA FE, N. M.

P. F. HANLEY

DEALER IN

Fine Wines, Liquors & Cigars

Imported and Native Wines for Family Use. OUR SPECIALTIES—Old Crow, McBrayer, Guckenheimer Rye, Taylor and Paxton, Old Jordan and Monogram, Ky., Whiskies.

SAN FRANCISCO STREET SANTA FE, N. M.

Spring, Summer, Autumn, Winter.

ANYTHING & EVERYTHING WHOLESALE & RETAIL

AT BLAIN'S BAZAAR

J. H. BLAIN, Santa Fe, N. M.

J. WEINBERGER

SOUTH SIDE PLAZA, SANTA FE, NEW MEXICO.

Our Motto is to Sell the Best

WINES, LIQUORS, CIGARS

For the Least Possible Money

Buy your Goods Here. Family Trade Solicited. Satisfaction Guaranteed.

Telephone No. 94

SALMON & ABOUSELMAN
WHOLESALE AND RETAIL DEALERS IN

Dry-Goods AND Notions

SCHOOL BOYS' SUIT SALE!

HAMILTON-BROWN SHOE CO.'S "SECURITY" LACE.

During this and the coming week we will hold a **SPECIAL SALE** of **SCHOOL CLOTHING**. Boys' School Suits Extra Pants, Caps, Shirts, Collars, Vests, Etc., all will be sold at

CUT PRICES.

This sale will be for the benefit of the school boys. We are **SOLE AGENTS** for the famous **HAMILTON-BROWN SHOE CO.** Our American Ladies' American Gentlemen, Girls' and Boys' School Shoes cannot be equaled. A Guarantee with every pair that leaves our establishment.

GIVE US A CALL AND BE CONVINCED.

SAN FRANCISCO STREET. P. O. BOX 255.

CHOICE FOODS.

Away up in quality, away down in price, is the only kind we carry. To live well doesn't mean to live extravagantly. It all depends upon where you buy your supplies and the prices you pay for them. We sell the best and purest at less prices than you will pay for poorer quality.

Cervelat Sausage, New Mackerel, Imported Swiss Cheese.

H. S. KAUNE & CO.
San Francisco St. ... **GROCERS** ... Telephone 26.

R. J. PALEN, President. J. H. VAUGHN, Cashier.

HENRY L. WALDO, Vice President.

THE FIRST NATIONAL BANK

SANTA FE, NEW MEXICO

United States Designated Depository.

OLDEST IN THE CITY.

J. LOWITZKI,
Lower San Francisco Street.

Livery, Feed and Sale Stable

HACKS AND VEHICLES PROMPTLY FURNISHED.

Careful Drivers for Tourist Parties. Everything First-class.

TELEPHONE 57.

If you want to buy anything, if you want to sell anything, if you want to rent a house, if you want your house rented, or if you lose anything, advertise in the **NEW MEXICAN**.

W. A. McKENZIE
HARDWARE

THE GREAT MAJESTIC

Screen Doors and Window Screens, Screen Wire All Sizes, Ice Chests, Refrigerators, Ice Cream Freezers and Winter to Sell Them.

THE GREAT MAJESTIC TINNING & PLUMBING

SOCIAL AND PERSONAL

Colonel and Mrs. Venceslao Jaramillo of El Rito are at the sanitarium.

Mr. and Mrs. James Rawley of Topeka are at the St. Vincent's sanitarium.

Miss L. J. Howell, who has been spending some time in the city, has returned to Chicago.

B. S. Sleyster, engaged in the insurance business in Albuquerque, spent the day in the Capital City.

Miss Clara Olsen private secretary to Governor Otero has gone to Albuquerque for a visit of a few days.

M. R. Otero, register of the United States land office, left this evening for Albuquerque where he will spend Sunday.

Mrs. R. J. Palen and daughter, Miss Caryll, left Thursday evening for Denver, where they will visit relatives.

Hon. B. S. Rodey left Albuquerque yesterday forenoon for Ogden where he will attend the Irrigation congress that convenes next Tuesday.

Miss Bright and Miss Atkinson have returned to the city after visit to friends and relatives in Fairfield, Iowa, and are now at the sanitarium.

Mrs. S. A. Cox of Plattsburg, Mo., and Mrs. S. C. Hall of Chicago are at the Palace and visiting the points of interest in and about Santa Fe.

Dr. J. M. Diaz left Thursday for Chicago, Ill., where he will take a post graduate course in medicine and surgery at one of the leading hospitals.

Alfonso Clouthier, postmaster at Taos, is in the city in attendance at the United States District court and also on a visit to relatives.

Mrs. L. Bradford Prince is now in Denver the guest of Mrs. Sharpe, wife of Colonel Sharpe, adjutant-general of the department of the Colorado.

Mr. and Mrs. J. D. Sena and sisters left this morning for a short pilgrimage to the chapel at the San Juan pueblo. They will return home tomorrow evening.

H. S. Lutz, city agent of the Atchison, Topeka & Santa Fe, is quite ill, but is nevertheless attending to business.

Judge Henry L. Waldo, solicitor of the Santa Fe railway lines for New Mexico, returned to Las Vegas yesterday morning. He expects to again visit Santa Fe Monday.

W. A. Bayer, the efficient and gentlemanly chief clerk in the general offices of the Santa Fe Central, contemplates a trip to Moriarty this evening to trip the light fantastic.

Miss Urna Hickox, daughter of Mr. and Mrs. G. W. Hickox, has accepted a position as teacher in the public schools at San Antonio, Socorro County, and has assumed her duties at that place.

P. F. Knight, superintendent of telegraphs for the Santa Fe Central, is confined to his home with illness. Mrs. Knight, who is ill with mountain fever, shows no improvement in her condition.

Dr. T. P. Martin, the leading physician in northwestern New Mexico, with office in Taos, spent several days of the week in town, having been summoned as a witness before the United States grand jury.

General Manager W. S. Hopewell of the Santa Fe Central is expected to return to this city during the coming week from a sojourn at the Sulphur springs in Sandoval County. His stay there has greatly improved his health.

Miss Jennie Garcia, who has been spending some time in this city as the guest of her uncle, Justice Jose Ma. Garcia, and her grandmother, Mrs. Simona Garcia Quintana, returned to her home in Albuquerque this afternoon.

Mr. and Mrs. Frank Andrews and child left this afternoon for Albuquerque from which place Mr. Andrews will visit Arizona with a view to locating either in Prescott or Phoenix. Mrs. Andrews will remain in Albuquerque visiting relatives for the time being.

Hon. A. L. Kendall, chairman of the board of county commissioners of this county, will leave Cerrillos Monday for Ogden, Utah, to represent Santa Fe County at the meeting of the National Irrigation congress in that city next week.

Miss Mamie Waldo, daughter of Judge and Mrs. Henry L. Waldo, who has been on an European tour with a party of Kansas City friends for some months, reached Montreal, Canada, last Wednesday en route home and is expected to return to Kansas City Tuesday of the coming week.

Mrs. Daniel Baum of Omaha, Neb., mother of Mrs. J. W. Raynolds and Miss Baum of this city, arrived during the week from a two-months' sojourn in California and will leave in a day or two for Omaha. She will likely be accompanied by Mrs. J. W. Raynolds who will pay her old home a short visit.

A. Stabb and daughter, Miss Bertha Stabb, who have spent the past two months travelling through Germany, are now sojourning in the Black Forest. Miss Mattie Longwell of Philadelphia, a native of Santa Fe, and who spent her childhood here, is travelling with them. The party expects to sail for this country October 4.

James L. Seligman, president of the Seligman Bros. company, who has

been in eastern trade centers for some time purchasing goods for his firm, is expected to return home during the coming week. Mrs. Frances Seligman, who has been in Philadelphia during the summer, may return with her son to this city.

Jay Turley, Esq., irrigation and civil engineer, left today for Ogden, Utah, where he will attend the irrigation congress as a delegate from this Territory. Mr. Turley is well posted on irrigation engineering and will confer with the state engineers of Colorado, Wyoming, Utah and Idaho, before returning to New Mexico.

E. A. Turner, who is the master mechanic of the Colorado Fuel and Iron company at Madrid, and a very competent official, is in the city a member of the United States petit jury. Mr. Turner says that there are about two hundred men employed in that mining camp, that everything is moving along satisfactorily and that the men are steadily employed.

Col. Theodore W. Heman of Tucumcari, probate judge of Quay County and one of the leading and most public spirited citizens of the new county, arrived via the Santa Fe Central this morning. He will appear before the Territorial board of equalization Monday to attend to official business for the county.

Mrs. B. W. Robbins, wife of General Freight and Passenger Agent Robbins of the Santa Fe Central, accompanied by her son, Howard, left today for Denver, their former home, to make arrangements for moving their household goods to the Capital City. Mr. Robbins has rented a seven-room house on Johnson street and will go to housekeeping about October 1.

Hon. L. B. Prince was a passenger this morning for Ogden, Utah, where he will attend the sessions of the National Irrigation congress, of which he is the first vice-president. He received a dispatch before leaving announcing that a delegation of twenty-six representatives from El Paso went north yesterday via the Santa Fe bound for Ogden, Utah, to attend the congress. It is understood that El Paso will make a determined effort to secure the holding of the 1904 session of the congress in the Pass City and that the El Pasoans count upon the aid of the New Mexico delegates.

ALL IN LINE FOR SANTA FE

Concluded from First Page.

The rooms of the board in the Sena building. The meeting was one of marked enthusiasm and there were on all sides the evidences of a greater interest and promises of more personal and more active work on the part of the individual members of the organization. The reports of the recently appointed committees showed that the board was entering on a period of renewed prosperity and that the committees were all working in harmony and that the efforts of all were being directed toward a common end—the development and advancement of Santa Fe. There were several impromptu addresses made along the lines of what should be done so as to best serve the interests of the city and the speakers were Mayor Ishmael Sparks, Hon. Jose D. Sena, S. G. Cartwright, J. G. Schumann and others.

The committee appointed to solicit members for the board of trade made a report that showed that the members of the committee had not been idle during the past month and the following were proposed for membership: E. C. Abbott, A. L. Morrison, Sr., H. L. Ortiz, W. H. Pope, A. J. Fischer, S. S. Wrightsman, Alphonse C. Ireland, Adolph Seligman, George S. Blunt, M. A. Ortiz, A. M. Dettlebach, N. Salmon, Jose Segura, J. A. Wood, Rev. W. H. Moore, Rev. W. R. Dye, Rev. W. A. Cooper, Dr. J. M. Diaz, Dr. W. S. Harroun, Dr. W. M. Popplewell, Dr. A. J. Massie, Dr. C. A. Wheelon, Dr. C. N. Lord, Dr. C. O. Harrison, Dr. J. L. Norton, Dr. D. Knapp, Paul A. F. Walter, H. E. Gibson.

There was also a report that was submitted by E. A. Fiske, Esq., relating to the alleged discrimination against Santa Fe on the part of the Atchison, Topeka & Santa Fe railway. The report of the secretary showed that the receipts for the past month were in excess of the expenditures and that a balance was left in the treasury.

There being no further business before the board adjournment was taken.

IN THE COURTS.

Grand Jury in Territorial Court Returns Four True Bills.

The United States District court is still occupied with the Sanchez case and it is thought that all the evidence for the prosecution will be in by this evening. There were several Santa Fe witnesses examined today.

The grand jury in the Territorial court today returned four true bills and there were as many others that were returned as not true. These cases are for minor offenses sent on from the courts of justices of the peace.

When you pay 10c for a package of pepper, which would you rather have: 10c of pepper, or 5c of pepper and 5c of something else?

Then buy Schilling's Best.

Subscribe for the New Mexican.

IMPOSSIBLE!

— and then they'd have laughed —

That's just what people would have said and done a few years ago if you had told them

That we are going to give away Five Dozen Corsets ABSOLUTELY FREE.

And people to-day will exclaim, IMPOSSIBLE! when we say that we have a plan whereby we can give them SOMETHING FOR NOTHING.

But that's just what we CAN do and what we ARE GOING TO DO.

To every lady who will bring to our Corset Department a purchaser for one F. C. or American Beauty Corset at the regular retail price of \$1.00 we will present the corset of the same make in any style or color absolutely FREE OF CHARGE.

This is a bona fide offer, made to introduce these goods, and will positively not be repeated.

SALE COMMENCES AUGUST 31ST, 1903, AT 10 A. M.,

And the offer will be withdrawn when the quantity named above has been given away.

"SOMETHING FOR NOTHING"

THE IDEA IS FREE

SELIGMAN BROS. CO.,
Wholesale and Retail Dry-Goods,
P. O. Box 434. SANTA FE, N. M. Phone No. 36.

OUR CANDIES ARE ALWAYS FRESH

If you like good, fresh candy, buy it of us. We get Allegritti's Candies by express in small quantities, insuring their being fresh at all times. We also carry Gunther's Chocolates and Bon-Bons. Always Fresh and Pure. A Trial will convince you.

FISCHER DRUG CO., 230 SAN FRANCISCO ST.

Butchers, Bakers, Grocers

F. S. DAVIS, President S. G. CARTWRIGHT, Sec'y and Treas.

CARTWRIGHT-DAVIS CO.
No. 250 San Francisco Street.
Grocery Telephone No. 4. Meat Market Telephone No. 49.

NEW GOODS.

Dill Pickles.
Roll Herring.
Merlerte Herring.
New Mackerel.
Golden Bloaters.

FRESH SHIPMENT.

Deviled cheese, pots... .15
Roquefort cheese, pots... .15
A. D. Cheese, pots... .15

MEAT MARKET.

We have just received a shipment of the finest Salami sausage we have ever been able to get. Try it if you are fond of this sort. Bologna, ham and Vienna sausage; cold boiled ham, chipped beef, mutton and lamb. Our shop is thoroughly screened from the flies.

LAUNDRY SOAP.

We carry a number of the leading brands of laundry soap. We make attractive prices to those buying by the box.

We especially recommend our Crystal White soap. It is excellent for the laundry, kitchen, bath and toilet. The only full size bar of pure white soap offered for 5c a bar.
Box, 100 bars for... \$4.25

MEADOW GOLD.

Meadow Gold butter is sweeter, purer and finer flavored when you get it than any other brand of butter, and will keep better than any other. Next best is Keystone. Keystone sells at 25c; Meadow Gold at 30c.

OUR BAKERY.

We are proud of the quality of bread that we are now sending out. It's a little bit the best bread you have ever had a chance to buy in Santa Fe. Only 5c a loaf.

SOMETHING DIFFERENT.

We have a new one. It is Olivette. Made principally from chopped olives and Spanish sweet peppers.
Per bottle... .20

BOTTLED OLIVES.

We are headquarters for bottled olives.
Plain olives... .10 up
Stuffed olives... .15 up

FRUITS AND VEGETABLES.

We receive daily supplies of fresh fruits and vegetables. Egg plants, sweet potatoes, tomatoes, pears and peaches are very appetizing just now. Grapes and cantaloupes fresh every day.

HENRY KRICK SOLE AGENT FOR
Lemp's St. Louis Beer.
ALL KINDS OF MINERAL WATERS MAIL ORDERS PROMPTLY FILLED
The Trade Supplied From One Bottle to a Carload.
Guadalupe Street, Santa Fe, N. M. Phone No. 38.

The Old Curio Store
J. S. CANDELARIO, Prop.
301 and 303 San Francisco Street.
Wholesale and Retail Dealers in
Mexican and Indian Curios
The best place to buy Navajo Blankets, Indian and Mexican Pottery, Bells from the Cliff Dwellings, Indian Baskets, in fact all sorts of Curios of Indian and Mexican make can be found at Our Store.

P. O. BOX 346 : : : : SANTA FE, N. M.

J. P. VICTORY

Attorney at Law and Real Estate Agent

112 San Francisco Street, Santa Fe, N. M.
Money to loan upon real estate security on easy terms.

Something choice: First class properties on San Francisco street paying more than 8 per cent net on rentals. Have upon my books excellent fruit ranches in the Espanola valley, large and small ones, plenty of water.

Furnished rooms on Palace avenue. **IMPORTANT TO LIVERYMEN.**—I can sell you the finest and best equipped livery stable in the Territory at two-thirds of its real value; includes fee of land and commodious brick barn, together with the good will of a flourishing business, 30 horses, busses, hacks, picnic wagon, bugles, and all the other vehicles that go to make up an up-to-date livery barn, and all practically new. Good excuse for sale. In a live and growing city. Write for particulars.

I have a nice cottage (double) six rooms on one side, 4 on the other; owner occupies 4 rooms and the rest rent for \$25 a month; good neighborhood; ample space to erect other buildings on same street; stables and other outbuildings; the price asked is very low.

Can sell at a bargain a cosy home on Manhattan avenue, an adobe brick house, 7 rooms; fruit and vegetable garden; city water, hydrant and tank; 70 choice fruit trees; currant and raspberry bushes; lot 80 by 265 feet.

I can show you a tract of land west of town, 40 acres, with two adobe houses, one with 4 rooms, the other 2; 15 acres in alfalfa; 800 fruit bearing trees; 2 wells; alfalfa sold for \$300 last season; very cheap.

I also have a fruit ranch in a high state of cultivation, in the suburbs, with a building site overlooking the entire city of Santa Fe. On it there is an artificial reservoir, the only one of its kind in the city, 12 feet or more in depth, holding over 125,000 gallons of water, constantly replenished, from which the whole place can be irrigated daily during the summer, and which could be stocked with fish. The land contains many hundreds of young trees of the finest and most valuable varieties of apples, peaches, pears, plums, apricots, cherries and other fruits, the greater part of which already bear; a young bearing vineyard, thousands of bushes of currants and other small fruits; extensive beds of asparagus, rhubarb, and other fine vegetables. To be sold on easy terms, and for much less than it cost, owing to ill health of the owner.

Examine a 23-acre tract east of the Wieland place, and then ask me its price; you will be surprised.

I am authorized to dispose of the Congregational Church, on the south side, convenient to the contemplated Union Depot. It stands upon two lots, and will be sold cheap, or the building will be repaired and leased to responsible parties.

On lower San Francisco St., east of the railroad track, I can sell you properties desirable for homes or business propositions; these will bear examination. I will take pleasure in showing prospective investors desirable building sites in the neighborhood of the Capitol, and in the vicinity of the Presbyterian Church, which in a few years will be worth double the present asking price.

About two blocks west of Guadalupe church, on De Vargas St., I can sell you three small homes.

OUTSIDE PROPERTY.
At El Cuervo, 10 miles from the Rock Island road, I can sell you about 640 acres; patented; excellent grazing land.

Convenient to Las Vegas, I have for sale several large tracts of desirable land which I am permitted to sell at very low figure. One tract contains about 3,500 acres, and is located about three and one-half miles southwest of Las Vegas; nearly all of it is under fence; good grazing and water for stock; some timber. Another tract of 550 acres, 7 miles from Las Vegas; timber and grazing, with an excellent stream of water passing over it. Still another tract of 350 acres of farming, grazing and timber land, 8 miles west of Las Vegas, with running water upon it.

MERCANTILE PROPOSITIONS.
To those desiring an investment in a good mercantile business located in a thriving town in Rio Arriba county I can suit them with the chance of their lives; general merchandise, large stock; store, two cottages, stables, and other buildings; large tract of land, with big orchard, producing the last season \$1,400; merchandise business pays from \$2,500 to \$3,000 a year and can be increased; fine fishing, boating and bathing; with horses, wagons, etc., 20 varieties of choice roses and other flowers in abundance; owner will allow prospective purchaser to thoroughly investigate before buying; good reason given for selling.

I have several other commercial and business propositions to submit those desiring to enter mercantile life and to grow up with the new era of prosperity now coming in with the Santa Fe Central, and an eight page daily; who says that the world don't move, and our city with it.

HOUSES TO RENT.
Several small houses, some adobe, some brick, others frame, upon my books, which I would be glad to show an intended purchaser. They are desirably situated, and will be sold cheap.

Also the building corner of Water st. and D & R G railroad track lately used as a saw mill.

UNFURNISHED ROOMS
I have 3 or 4 rooms, and stable that I will rent, on De Vargas St., two blocks west of Guadalupe church

RECEPTION TO GEN. BLACK

Santa Fe Will Appropriately
Honor Distinguished Com-
mander-in-Chief G. A. R.

ATTRACTIVE PROGRAM

Mayor Sparks and Delegation from
Carlton Post to Meet Party at
Lamy.

All arrangements have been made for the reception on Monday September 14 to Gen. John C. Black and Mrs. Black. General Black has been honored with the distinguished office of commander-in-chief of the Grand Army of the Republic of the United States and his visit to Santa Fe will be a memorable one. The fire department has kindly donated the fire works for the occasion and many thanks are tendered to it for its courtesy in so doing. Following is the program:

1. General and Mrs. Black will arrive in the city on the midnight train, September 13; they will be met at Lamy by the commander of Carleton Post, John R. McFie, and Mayor Ishmael Sparks of this city, and escorted to Santa Fe where General and Mrs. Black will be entertained at the residence of Commander McFie, chairman of the executive and reception committees.

2. At 10 a. m. on the 14th, General and Mrs. Black and party will be taken on a drive to places of interest in the city and surroundings and at about 1 p. m., will return from the drive to the Palace hotel where dinner will be served.

3. The First Cavalry military brass band, under the leadership of Professor Perez, will be in the pagoda at the plaza at 2:30 p. m. sharp, and render music until 2:45 p. m., when it will march to the Palace hotel and half at the south entrance; and at this entrance, escorted by the band, a detail from Carleton Post, the reception and executive committees and department commander J. W. Edwards, and other departmental officers of the G. A. R., General Black and party will march to the plaza, if the weather permits, otherwise to the court house, where, upon introduction by Gov. M. A. Otero, after music by the band, which will again take position in the pagoda, or in the court house in the event stated. General Black will make an address. Mrs. Black and occupants of that lady's carriage and of the carriage of Mrs. Secretary Reynolds will go in their carriages to the place of such address with the procession which will be led by the band.

4. At the place of such address, General Black and party will hold a reception to all the old soldiers and citizens generally, who are cordially invited to attend and meet General Black, and thereafter General Black and Mrs. Black will be escorted to the residence of Commander McFie where, as soon as it is sufficiently dark, the display of fireworks will take place.

5. At 7 p. m. sharp a "bean-bake" will take place at Carleton Post hall, to which all who may be invited will be welcome. For want of room the committee very much regrets its inability to extend a general invitation to all to attend the bean-bake. At the post hall General Black will be introduced by Commander McFie and addresses will also be made by Department Commander J. W. Edwards and Messrs. T. B. Catron, A. L. Morrison, J. P. Victory and others. The addresses will necessarily be very short as General and Mrs. Black intend to leave Santa Fe on the 9:35 p. m. train, unless they can be induced to remain over night and take the train on the following day. The music at post hall will be vocal and under the direction of ex-Department Adjutant-General F. P. Crichton.

All are respectfully requested to decorate their residences and places of business on Monday.

MINOR CITY TOPICS

A new and attractive awning has been placed in the front of the Bon-Ton Restaurant.

The Salmon block on San Francisco street is being greatly improved by a thorough renovation and repainting.

Theodore: If you fail to bring that Little Brown Jug Filter at Goebel's then I will go home to Mother, Alice.

The Wallace Reading club is being entertained this afternoon by Miss McFie at the McFie residence on Lincoln avenue.

Rev. W. A. Cooper, pastor of St. Johns M. E. Church will occupy the pulpit at both morning and evening services tomorrow.

The Bon-Ton restaurant this morning received a fine consignment of Mountain Trout, Baltimore Oysters, and Kansas City Meats.

The upstairs of the Bon-Ton Restaurant has been remodeled and refurnished, and will now be used exclusively for lodging purposes.

If you have any clean cotton rags that are suitable for cleaning machinery, bring them to the New Mexican office and receive cash for same.

Invitations have been issued for a

bean-bake to be given by Carleton Post, G. A. R., at Post hall Monday evening at 7 o'clock. Commander-in-Chief Black will be present.

The concert given by the Capital City band was a most enjoyable one and there was a large crowd that thronged the plaza during the rendition of the excellent program.

Owing to the change in the time of departure of the Denver & Rio Grande train, the mail for points reached by that line does not close until 9:30 a. m. instead of 9 o'clock as heretofore.

Col. W. S. Fletcher is today celebrating the twenty-fourth anniversary of his arrival in Santa Fe. During his temporary illness Tony Neiss of Cerrillos is acting as crier of the United States court.

Lost this morning on Palace avenue a diary for the year 1903. The booklet is only valuable to the owner. Reward will be paid to the person who has found it and will bring it to the New Mexican office.

The one-fare round-trip rate on the Santa Fe Central to Alamogordo offers an opportunity to the people of this city to take a cheap trip over the new road and to spend a few days in the beautiful Otero County town.

For the annual meeting of the grand lodge of the Knights of Pythias at Alamogordo on September 16 and 17, the Santa Fe Central will sell tickets at one fare, \$11.35, for the round trip. Tickets on sale September 14, 15 and 16, return limit, September 21.

The predictions are for generally fair weather tonight and Sunday; warmer tomorrow and in the northern portion of the Territory tonight. The maximum temperature yesterday was 70 degrees at 10:20 a. m., and the minimum was 55 degrees at 4 a. m. The precipitation was .05 of an inch. The temperature at 6 o'clock this morning was 44 degrees.

Mayor Sparks is anxious that as liberal a display as possible of "Old Glory" and bunting be made on Monday on both the business houses and residences in honor of the visit of Gen. John C. Black the distinguished commander-in-chief of the G. A. R., who comes to Santa Fe as the guest of the Capital City. The mayor urges citizens to decorate.

James W. Erwin, one of the inspectors indicted this week at Washington for connection with the postoffice frauds was in Santa Fe in May to report on the city's fitness for the free delivery of mail. The fact that he was forced to resign when the post-office investigation began and was subsequently indicted, accounts for the delay that this city experiences in securing free delivery. Erwin made his headquarters at San Francisco.

Judge John R. McFie, past department commander of the G. A. R., of New Mexico, received a telegram this forenoon from department commander J. W. Edwards of Albuquerque to the effect that many members of the George K. Warren Post of the G. A. R. at Albuquerque would be in Santa Fe Monday to participate in the reception to Gen. J. C. Black, commander-in-chief, and who will spend the day in this city. Department Commander Edwards is of the opinion that the Albuquerque contingent will be quite strong. Special rates for this occasion have been secured from the Santa Fe railway.

MADRID NEWS NOTES.
Mr. and Mrs. Dave Phillips and Mr. and Mrs. Thompson made an overland trip to Santa Fe last Sunday. The weather was pleasant and the party enjoyed themselves very much, some of them had never seen the Capital City.

Mrs. Hermann, the wife of the station agent at Lamy Junction for the Santa Fe, is visiting with her sister, Mrs. S. H. Sperry here.

Earl A. Turner, our genial master mechanic, and James Fox, the hoisting engineer at the Anthracite mine, are in Santa Fe this week, having been drawn as jurors at the present term of court.

The Dunworth family were called to San Antonio to attend the funeral of their aged grandmother who passed away last Sunday morning.

William John of Missouri has been visiting with his three sons, Ross, Harley and J. H., employed respectively at Cerrillos, Waldo and Bernalillo, by the Santa Fe railway as operators.

Mr. John was much impressed with this country.

The Santa Fe branch line engine had a little breakdown in the Madrid yards last Wednesday morning, so much so that it necessitated sending for another engine from Albuquerque to tow her to the shops to be repaired.

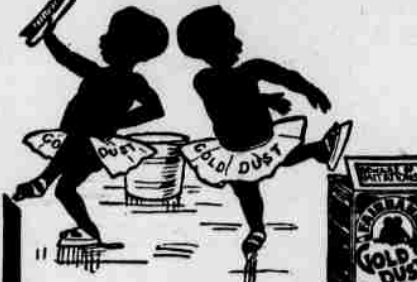
The precaution of Mr. Sperry, the conductor, was such that he had the mine supplied with empty cars for the day and the accident did not necessitate the shut down of the mine.

The last few days have been very cool and fall weather, as well as the season, must have come to stay.

If Headachy
Take TARRANT'S SELTZER APERIENT

No heart depressant or narcotic, but a brain clearer and stomach settler; it brings the liver and bowels into healthy action. Used by American Physicians nearly 50 years. 50c. and \$1. at Druggists or by mail from THE TARRANT CO., 21 Jay Street, New York

"Let the GOLD DUST TWINS do your work"



GOLD DUST

makes floors and all woodwork shine so you can see your face in them. Does the work, too, in half the time of the "bend and rub, creep and scrub way" of our grandmothers.

GENERAL USES FOR GOLD DUST: Scrubbing floors, washing clothes and dishes, cleaning wood-work, oilcloth, silverware and tinware, polishing brasswork, cleaning bath room, pipes, etc., and making the finest soft soap. **GOLD DUST MAKES HARD WATER SOFT**

FOUR KILLED IN A RAILROAD WRECK.

Milwaukee, Wis., Sept. 12.—The Evening Wisconsin in a special from Fairchild, Wis., says that four persons were killed and several injured in a wreck on the Chicago, St. Paul & Omaha road six miles from Fairchild.

The train was a special excursion for Duluth. It ran into a washout at Kempton. Patrick Conway and Wendell Brown were killed and a number of other passengers injured.

RUMORS OF CRISIS IN ENGLISH CABINET.

London, Sept. 12.—A special meeting of the cabinet is summoned for September 14. Many rumors are rife, one being that the government will break up and that a general election will be held, or at least that the cabinet will be reorganized.

CRUISER MARYLAND SUCCESSFULLY FLOATED.

Newport, News, Va., Sept. 12.—The new 15,000-ton armored cruiser, Maryland, was launched today. An imperfection in the structural work under the vessel caused her to sink into the mud as she slid down the ways. Later she was successfully floated.

HURRICANE BREWING ON FLORIDA COAST.

Washington, Sept. 12.—The weather bureau has issued a bulletin announcing that a hurricane will center near the southern point of Florida, making a dangerous for vessels to sail to or from the Gulf ports.

SANTA FE'S INDUCEMENTS.

Advantages Offered By the Ancient City for Soldiers' Home Location.

Col. George W. Knaebel, who was appointed chairman of the committee to call on Gen. John C. Black, commander-in-chief of the Grand Army of the Republic, on the occasion of his visit to Santa Fe and to enlist his support in the securing of a soldiers' home for this city, when seen this morning said the plan was the same that had been advocated for some time and that it was revived at this time in order that the many advantages of this location and the superior facilities afforded could be brought to the attention of General Black so he could see for himself on his visit to Santa Fe. The committee will spare no effort to enlist the support of General Black and the great weight that such an endorsement as his would have with the authorities is well recognized.

Said Colonel Knaebel, in speaking of the matter: "There is no question that this climate and the other natural advantages that are afforded offer the most suitable site for an institution such as is proposed. There are in the whole country and especially the southern states no such opportunities as are here offered. The altitude and the perfect condition of weather that are to be found in Santa Fe are attributes to the climatic conditions that are most conducive to the complete restoration of health, and particularly in tubercular troubles."

OFFICIAL MATTERS

Will Meet Monday.

The Territorial board of equalization will meet Monday in the offices of the board in the capitol building.

Notary Appointed.

Ross L. Malone of Roswell has been appointed a notary public for Chaves County by Governor Otero.

Charter Amended.

There have been filed in the office of the Territorial secretary amendments to the charter of the Donohoe Mercantile company of Portales, N. M., increasing the capital stock of the company from \$12,500 to \$25,000.

"BEAUTIFUL RAINBOW."

Mountain Trout, Black Bass, Silver Herring, Lake Trout, and other first-class fish can be found at the only first-class short order restaurant, the popular Bon-Ton. Give them a call.

The New Mexican Printing Company has the best bookbinding in the southwest and the only modern bindery in New Mexico. It turns out superior blank-books, cash-books, journals and ledgers, and also loose-leaf ledgers and blank-books of all descriptions. The work done by it is first-class and at very low rates. Bankers and merchants in New Mexico should not send their book binding work out of the territory, but should patronize this very deserving home manufacturing institution.

Not Equaled in New Mexico

Not Excelled in America

IRELAND'S ICE CREAM SODA

Made from Pure Jersey Cream

Purity, Quality and Satisfaction Guaranteed.

S. SPITZ

DIAMONDS

A FULL LINE OF

WATCHES, CLOCKS, SILVERWARE, ETC.

ALL KINDS OF DESIGNS IN

Filigree Fob Chains,

Filigree Neck Chains,

Filigree Souvenir Spoons,

Filigree Brooch Pins,

Filigree Bracelets,

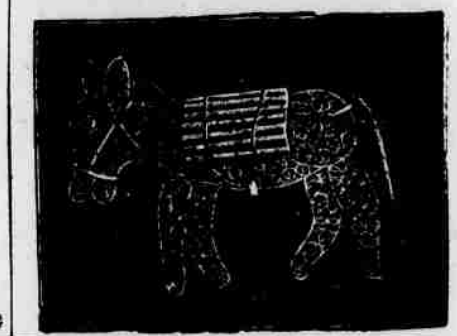
Filigree Card Cases,

South Side Plaza - Santa Fe

JEWELRY

Manufacturer of

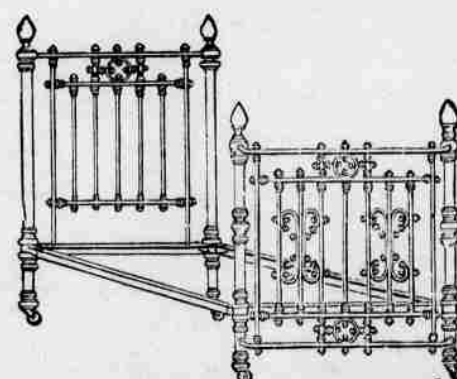
MEXICAN FILIGREE JEWELRY.



D. S. LOWITZKI

Household Goods,

Furniture and Queensware



We will furnish your house from kitchen to garret on easy payments, or will give reasonably low prices for cash.

All kinds of new and second-hand goods bought and sold.

WE DELIVER ALL GOODS.

San Francisco St., Santa Fe, N. M.

WE LEAD THEM ALL!

THE CHARLES WAGNER FURNITURE CO.

306 and 308 San Francisco St.



UNDERTAKING AND EMBALMING.

Charles Wagner, Licensed Embalmer and Progressive Mortician.

We have just received a carload of Decorated English and French Haviland China, at prices out of sight! Our buying in car lots enables us to name prices that can not be met by any of our competitors. That is not our trouble. We are here to give you the benefit of our experience. Nineteen years of continued business with you is our reputation.

We Carry Everything in Household Furnishing. Our Goods are Marked in Plain Figures. One Price, and One Only.

GOODS SOLD ON EASY PAYMENTS.

Furniture, Queensware, Cutlery and Tinware, Stoves and Ranges, Fancy Haviland China of Every Description.

EVERYTHING GUARANTEED TO GIVE PERFECT SATISFACTION OR MONEY WILL BE REFUNDED

No Risk to do Business With Us.

TELEPHONE: Store, 10.

Night call at residence, No. 1.

Second-Hand Goods Bought and Sold.

THE CHANCE OF A LIFETIME FOR PROSPECTIVE INVESTORS

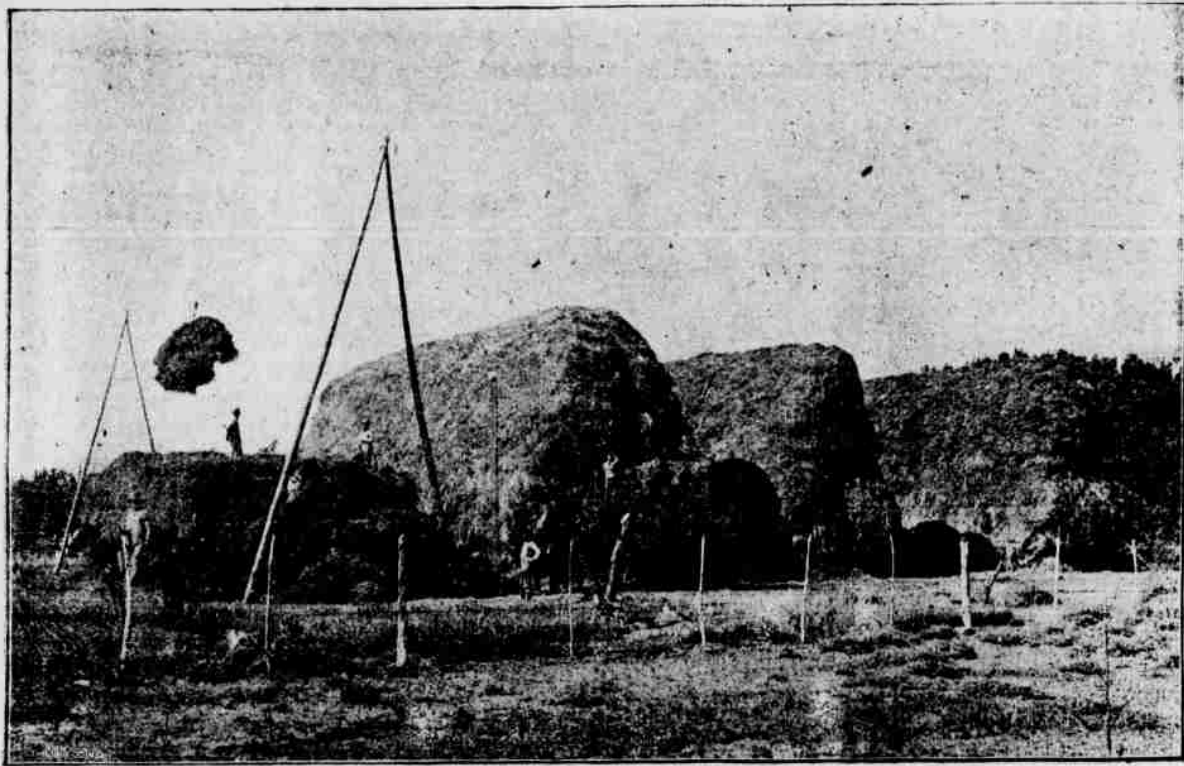
Building Lots

TORRANCE
MORIARTY
ESTANCIA

I will take pleasure in showing prospective investors and those desiring building sites for homes or business propositions in the above-named towns along the line of the Santa Fe Central Railway. Sites will be worth double the present asking price in the next year. I will "personally" give any information desired upon request.

WM. P. CLARKE, Mgr. Real Estate Dept.,

Office: SANTA FE CENTRAL RAILWAY, SANTA FE, N.



STACKS OF ALFALFA AT ROSWELL.

THE GEM CITY OF THE PECOS VALLEY

(Continued from Page One.)

en of the city and new charter for enlarged powers in city government will be applied for.

As evidence of the material prosperity of the city may be cited the fact that the receipts at the Roswell postoffice from April 1, 1902, to April 1, 1903, were \$10,281.27, in consequence of which it was raised to the second class with the privilege of free delivery.

Telegraph, freight and express statistics are definitely unattainable, but each has increased during the past year, so much so that the railroad depot capacity for passenger and freight traffic has been enlarged, the telegraph office has been moved from the depot up town to quarters in the Grand Central hotel and the express office has been located in a large and commodious room to accommodate its business. It is known that the cash freight payments have amounted to over \$50,000 per month here for the past year and the express office has remitted over \$4,000 monthly to headquarters for more than a year.

The city has now three national banks, a new one being established within the past year and the Citizens bank changing from a territorial institution to a national one. All are doing well.

The newspaper situation has been lively, at one time there being three daily papers. A few weeks ago the Journal was sold to the Record and was closed down, leaving one Democrat daily and weekly and a Republican weekly to occupy the newspaper field. A corporation has been formed under the title of the Roswell Printing company to compete for the job printing of the city and community. It will pay attention strictly to job work and a number of business men and printers are the incorporators.

New Buildings Erected.

In the limits of an article of this kind it is impossible to enumerate the new houses, business and residence, but along Main street and the blocks of side streets adjacent may be noticed the following new business buildings which have been erected within the past twelve months: Charles' Whiteman's store, frame; Lewis' hardware store, stone; Plant's, stone; the Sparks' building, four store rooms, brick; the Hardwicke building, stone, printing office and bank; Morrison's restaurant, brick; Stringtallow & Tannehill's Texas block, two store, brick, hardware and office; Barnett building, brick; Coulter's, brick; the Pioneer block, brick; the Sansom block, brick, occupied by the Porter-Ewell Co.; the Joyce-Fruit Co. department store, stone; Grand Central hotel reconstruction brick; cold storage, plant, brick; Roswell Wholesale Grocery; the Van Standt building; Kirksey's shop; land office building; express office; Roswell Bottling works; Judge Peacock's court; addition to Judge Lea's office. All of

these are large, commodious and handsome buildings.

A large proportion of the new buildings erected within recent years have been of brick and stone. The stone is native red sandstone and gray limestone both of excellent quality obtained from quarries near town. The brick is practically all imported from Kansas. Clay suitable for brick making is to be found in abundance but the high price of fuel has heretofore prevented its profitable burning.

There are three large lumber yards in Roswell, all doing a large and profitable business.

The alfalfa shipments from one ranch alone, the Slaughter ranch, reach the amount of 1,500 tons and during the present season large shipments have been made to South Africa, Honolulu and England.

Among the new industries of Roswell are the large wool scouring plant, the Roswell Trading company's business, Miss Ward's sanatorium and emergency hospital. The cold storage plant is a large brick building which is nearing completion. The electric power plant is lighting the town and furnishing lights to stores and residences and also the power for motors in several enterprises. The plant is insufficient for the demands made upon it and will be increased. The telephone system has nearly doubled during the past year and the service greatly improved. Three hundred and fifty telephones are in use.

Roswell has two first-class hotels, the reconstruction of the Grand Central making it one of the finest in the Territory both in appearance and service. The Shelby hotel is first-class in every particular.

School Facilities Increasing.

On July 21 bonds to the amount of \$10,000 were authorized by popular vote for the erection of a new public school building to supplement the capacity of the large building erected a few years ago. At the time it was built it was thought that it would be sufficient to accommodate all demands for many years to come, but it has been crowded to its utmost capacity almost from the beginning. One ward school building will be erected with the proceeds of these bonds and an additional ward school will be erected each year until there is one in each ward, when the present magnificent 16-room building will be utilized for a high school. The New Mexico Military Institute is also cramped for boarding accommodations, and during the past year built a new ten-room dormitory. All available places were filled last session and an additional five-room building for servants' quarters and a four-room addition to the building are now under construction. These are being paid for out of the earnings of the school as the appropriation made by the legislative assembly was found to have been made from a sinking fund and was unavailable.

The development and increase of business of the three department stores, Joyce-Fruit, Porter-Ewell and Jaffa-Calfree has been so great as to force each to seek new quarters. These stores would be a credit to any city and each is doing a good business.

Fine residences are being built so rapidly that no attempt will be made to enumerate them. The direction of growth of the town is both toward the northwest and southwest. Steps are being taken toward an extension of the city limits to take in the additions, which are in reality little towns.

While this great development has been taking place in Roswell the surrounding and supporting country has kept pace, as is necessary. The tendency is toward fruit culture and intensive farming. The wonderful yield from J. J. Hagerman's apple orchard and of the crop throughout the valley has shown what can be done in this line.

Land both improved and unimproved is valuable in this section and the real estate market has been very active. As an illustration of the value of highly improved property, W. M. Reed sold a tract of twenty acres recently for \$8,000.

Hondo Reservoir Assured.

The seal of secrecy is on the lips of these connected with the United States government geological survey now at work in this section investigating reservoir sites, but the prospects for the building of the Hondo reservoir are very bright and the project seems almost assured. The proposed reservoir site is twelve miles southwest of Roswell. It has been surveyed by the geological survey corps and while no definite statement can be made as to the size of the reservoir and amount of land intended to be recovered, since these figures can be obtained only from the reports of the survey, speaking in a general way, the area of the reservoir will be approximately 2,000 acres and the land brought into cultivation from 50,000 to 100,000 acres, these figures being compiled from the original survey of the same reservoir site made ten years ago by private parties. The land is all black sandy loam very fertile when provided with sufficient water for irrigation and will more than double the crop output in this section of the country. This land all lies on a gentle slope and would be very easy to put in cultivation by irrigation. It is covered with grass, a natural meadow with no brush of any kind and the land stands ready for the plow.

Aside from this project, the artesian belt has been extended during the past year over 10,000 acres making the known area of the belt now 50,000 acres. This belt extends from eight miles north of Roswell, south along the Pecos river to a point about twenty miles north of Carlsbad in Eddy County. The belt varies in width from two to ten miles and the flow is struck at from 100 to 1,000 feet. The flow is from 100 to 2,000 gallons per minute according to location, diameter of pipe and depth of well.

A large number of new artesian wells have been drilled and the area is being constantly extended. One contractor has had two well-boring machines at work night and day for the past three years. Roswell will be a great and prosperous city in a short time, depending upon her own and the surrounding country's natural advantages. (Continued on Page Seven)

A BOY'S WILD RIDE FOR LIFE.

With family around expecting him to die, and a son riding for life 18 miles, to get Dr. King's New Discovery for Consumption, Coughs and Colds, W. H. Brown of Leesville, Ind., endured death's agonies from asthma; but this wonderful medicine gave instant relief and soon cured him. He writes: "I now sleep soundly every night." Like marvelous cures of consumption, Pneumonia, Bronchitis, Coughs, Colds, and Grip prove its matchless merit for all Throat and Lung Troubles. Guaranteed bottles 50c and \$1. Trial bottles free at Fischer Drug Co.

TERRITORIAL FAIR.

Albuquerque, N. M., Oct. 12th to 17th, 1903.

For this occasion the Santa Fe will sell greatly reduced rate tickets from all points in New Mexico and Colorado to Albuquerque and return. The rate from Santa Fe will be \$2.65 for the round trip. Dates of sale Oct. 11th to 16th, good for return passage until Oct. 19th. H. S. LUTZ, Agent.

ABCESS.

W. H. Harrison, Cleveland, Miss., writes, Aug. 15, 1902: "I want to say a word of praise for Ballard's Snow Liniment." I stepped on a nail which caused the cords in my leg to contract and an abscess to rise in my knee, and the doctor told me that I would have a stiff leg, so one day I went to J. F. Lord's drug store (who is now in Denver, Colo.) He recommended a bottle of Snow Liniment; I got a 50c size, and it cured my leg. It is the best liniment in the world. ABCESES, with few exceptions, are indicative of constipation or debility. They may, however, result from blows or from foreign bodies, introduced into the skin or flesh, such as splinters, thorns, etc. Sold by Fischer Drug Co.

NATIONAL IRRIGATION CONGRESS

Ogden, Utah, Sep. 15th to 18th.

For this occasion the Santa Fe will sell tickets to Ogden and return at a rate of \$31.15 for the round trip, dates of sale Sept. 12, 13, 14; good for return passage until Oct. 15.

H. S. LUTZ, Agent,
Santa Fe, N. M.

A REMARKABLE RECORD

Chamberlain's Cough Remedy has a remarkable record. It has been in use for over thirty years, during which time many million bottles have been sold and used. It has long been the standard and main reliance in the treatment of croup in thousands of homes, yet during all this time no case has ever been reported to the manufacturers in which it failed to effect a cure. When given as soon as the child becomes hoarse or even as soon as the croupy cough appears, it will prevent the attack. It is pleasant to take, many children like it. It contains no opium or other harmful substance and may be given as confidentially to a baby as to an adult. For sale by all druggists.

AMERICAN BANKERS' ASSOCIATION.

San Francisco, Calif., Oct. 20-23, 1903. For this occasion the Santa Fe will issue tickets to San Francisco and Los Angeles and return at one fare for the round trip, Los Angeles, \$38.45, San Francisco \$43.05. Dates of sale October 9th to 18th, final return limit November 30th.

H. L. LUTZ,
Agent, Santa Fe, N. M.

D. & R. G. CHANGE OF TIME.

Until further notice the Denver & Rio Grande train arriving here in the evening will be run as an extra from Espanola to Santa Fe, arriving at Santa Fe about 5 p. m.

From now until further notice the regular train will leave Santa Fe at 10 a. m.

J. B. DAVIS, Agent.

NEGLECTED COLDS.

Every part of the mucous membrane, the nose, throat, ears, head and lungs, etc., are subjected to disease and blight from neglected colds. Ballard's Horehound Syrup is a pleasant and effective remedy. 25c, 50c, and \$1.00. W. Akendrick, Valley Mills, Texas, writes: "I have used Ballard's Horehound Syrup for coughs and throat troubles; it is a pleasant and most effective remedy." Sold by Fischer Drug Co.

DENVER AND RETURN \$17.40. Annual convention, Brotherhood of St. Andrew, Denver, Colo., October 7-11, 1903. For this occasion the Santa Fe will sell tickets to Denver and return at a rate of \$17.40 for the round trip, tickets on sale October 5 and 6, good for return passage until October 31. H. S. Lutz Agent, Santa Fe, N. M.

The New Mexican Printing Company has the only bindery in the territory where first class loose leaf ledgers are manufactured. Merchants and business firms, requiring such books for the coming year, should immediately address this company and they will find that the best work at the lowest prices in the southwest will be done for them if they order from this company.

Scratch Paper.

Made from ledger, linen flat and book papers at 10 cents per pound at the New Mexican. This is scrap paper put up in pads and is less than the paper originally cost. Only a limited supply.

Subscribe for the New Mexican.

ALONG THE HIGH LINE

Material on the Ground for Erection of Union Depot and Hotel at Torrance.

(Written Exclusively for the New Mexican.)

There is something doing every minute along the Santa Fe Central. Scenes of industry and activity are to be witnessed all along the line and during the still watches of the night, when the settlers in the Estancia valley are asleep, the passenger train is making the round trip from the Capital City to Torrance for connections east and west on the Rock Island system.

W. P. Clarke, land and industrial agent of the Santa Fe Central, has put in a very busy week, dividing his time between Estancia, the thriving town that will be the seat of the new county of Torrance, Moriarty and Torrance, with the best possible results.

At Torrance Mr. Clarke established the Cottage hotel and dining room where the patrons of the Santa Fe Central system can receive entertainment. The hostelry is in charge of Mrs. Jennie Stepp, formerly of the Stepp House, at Santa Rosa. Work on the new union depot and hotel will be inaugurated next week, the material being already on the ground.

During the week Mr. Clarke also disposed of nine lots at Estancia, which bring \$100 and \$150 apiece. All were cash transactions. A number of prospective purchasers are expected at the town site during the coming week, and it is hoped the sales will eclipse those of the past week.

The town of Estancia is certainly doing well. Ten adobe houses and one frame are now tenanted, while ground has been broken for nine more adobe houses which will be under roof by the middle of next month. The Dunlavy Mercantile company has also broken ground for a private residence and store which will be under roof before winter.

Estancia, which is to have the railroad shops, already presents the appearance of a division point of a railroad. The shops include a round house, car sheds, company store house, mechanical department, all under roof, and the machine shop, of which the walls are up, but not as yet under roof. All of the shop buildings are of brick. The shop will be the scene of industry for 150 men, who are locating there with their wives and families will materially increase the immigration to Estancia. The shops are under the direct supervision of J. W. Records, master mechanic of the Santa Fe Central whose residence is one of the ten adobe houses in the town that are tenanted at the present time. Mr. Records is very enthusiastic over the steady growth the town has experienced since laid out in town lots.

Three lumber firms are on the list of industries at the town of Estancia. The Jackson-Galbraith Lumber company of Alamogordo today began the work of erecting sheds for storing Texas and Tennessee lumber for inside finishing, and an office building. The mill of the Loeb Lumber company has a capacity of from 20,000 to 25,000 feet of lumber a day, while the output of the Spencer Lumber company's plant is from 15,000 to 20,000 feet. These firms find a ready market for every carload of lumber they can get out.

The schoolhouse at Estancia, which is being erected by the management of the Santa Fe Central, is fast nearing completion and will be under roof by October 15. An active interest is taken in the erection of this building, and before snow flies the children in the immediate vicinity of Estancia will enter upon an educational course at the schoolhouse, a school board having already been selected with J. W. Records, master mechanic of the Santa Fe Central, as chairman.

The towns of Kennedy and Moriarty are also experiencing a steady growth, two settlers with capital, one from Chicago and another from California, having taken up residence at Moriarty during the present week.

The coming year has much in store for the town sites along the line of the Santa Fe Central, as the Estancia valley which the system traverses, offers excellent opportunities and advantages to homeseekers in the Territory of New Mexico.

HUNTER JAMES.

His Life Saved by Chamberlain's Colic, Colera and Diarrhoea Remedy.

"B. L. Byer, a well known cooper of this town, says he believes Chamberlain's Colic Colera and Diarrhoea Remedy saved his life last summer. He had been sick for a month with what the doctors call bilious dysentery and could get nothing to do him any good until he tried this remedy. It gave him immediate relief," says B. T. Little, merchant, Hancock, Md. For sale by all druggists.

BEAUTIFUL WOMEN.

Plump cheeks, flushed with the soft glow of health and a pure complexion, make all women beautiful. Take a small dose of HERBINE after each meal; it will prevent constipation and help digest what you have eaten. 50c. Mrs. Wm. M. Stroud, Midlothian Tex., writes, May 31, 1901: "We have used HERBINE in our family for eight years, and found it the best medicine we ever used for constipation, bilious fever and malaria." Sold by Fischer Drug Co.

The New Mexican Printing Company will do your job work with neatness and dispatch.

1903 September, 1903

Sun	Mon	Tues	Wed	Thur	Fri	Sat
		1	2	3	4	5
6	7	8	9	10	11	12
13	14	15	16	17	18	19
20	21	22	23	24	25	26
27	28	29	30			

SOCIETIES.

Masonic.



MONTEZUMA LODGE No. 1, A. F. and A. M.—Regular communication first Monday in each month at Masonic Hall at 7:30 p. m. C. F. EASLEY, W. M. F. P. CRITCHON, Secretary.



SANTA FE CHAPTER, No. 1, R. A. M.—Regular convocation second Monday in each month at Masonic Hall at 7:30 p. m. MARCUS ELDODT, H. P. ARTHUR SELIGMAN, Secretary.



SANTA FE COMMANDERY No. 1, K. T.—Regular convocation fourth Monday in each month at Masonic Hall at 7:30 p. m. F. S. DAVIS, E. C. W. E. GRIFFIN, Recorder.

I. O. O. F.

SANTA FE LODGE NO. 2, I. O. O. F. Meets every Friday evening in Odd Fellows Hall, San Francisco street. Visiting brothers welcome. GEO. W. KNAEBEL, N. G. A. P. HOGLE, Secretary.

CENTENNIAL ENCAMPMENT, NO. 1 I. O. O. F.—Regular communication the second and fourth Tuesday of each month at Odd Fellows' Hall. Visiting patriarchs welcome. JOHN SEARS, Scribe.

MYRTLE REBEKAH LODGE NO. 1 I. O. O. F.—Regular meeting first and third Tuesday of each month at Odd Fellows' Hall. Visiting brothers and sisters welcome. SALLIE VANARSDALE, N. G. Laura Davis, Secretary.

A. O. U. W.

GOLDEN LODGE, No. 3, A. O. U. W. Meets every second and fourth Wednesday at 8 p. m. C. C. PIERCE, Master Workman. JOHN C. SEARS, Recorder.

K. OF P.

SANTA FE LODGE NO. 2 K. OF P. Regular meeting every Tuesday evening at 7:30 o'clock at Castle Hall. Visiting Knights given a cordial welcome. J. S. CANDELARIO, C. C. J. K. STAUFFER, K. R. S.

B. P. O. ELKS.

SANTA FE LODGE No. 460, B. P. O. E. Holds its regular session on the second and fourth Wednesdays of each month. Visiting brothers are invited and welcome. J. B. DAVIS, E. R. A. J. FISCHER, Secretary.

IMPROVED ORDER RED MEN.

Santa Fe Tribe No. 5, I. O. R. M. Meets every Thursday eve at Odd Fellows hall at 8 o'clock. Visiting chiefs cordially invited.

C. L. BISHOP, Sachem. A. P. HOGLE, Chief of Records.

A small gasoline engine, new, for sale by the New Mexican Printing company. Call or write and get prices.

MONEY TO LOAN!

At the Next Regular Meeting

The

MUTUAL BUILDING & LOAN ASSOCIATION

Of Santa Fe

Will Receive

BIDS FOR LOANS

H. N. WILLCOX,

Secretary.

Office: Catron Block, Up Stairs

Santa Fe Filigree and Jewelry Mfg. Co.

GOLD and SILVER FILIGREE.

N. MONDRAGON, Mgr. S. E. Corner Plaza, San Francisco St.



HOW THE ALFALFA GROWS AROUND ROSWELL.

A Berth to Chicago \$2.50

**Burlington
Route**

A daily tourist sleeper leaves Denver for Chicago on the Burlington's vestibuled Flyer at 9.45 p. m. arriving Chicago the second morning at 7.20.

The rate for a double berth, which can accommodate two people, Denver to Chicago, is \$2.50.

These tourist sleepers are especially suited for summer travel—they are clean and comfortable; provided with toilet-rooms for ladies and gentlemen; are equipped with combs, brushes, soap, and towels. Bed linen is of superior quality and is changed daily. The seats are upholstered in rattan and have high backs.

The Chicago Special leaves Denver every day at 4.15 p. m. St. Louis Flyer daily at 2.00 p. m. and 9.45 p. m.

**Ticket Office, 1039 17th St
G. W. VALLERY, General Agt.
DENVER**

CHEAP ROUND TRIP TICKETS

Via SANTA FE

Los Angeles and San Francisco, August 2 to 15, and October 12 to 18, \$38.45.
Denver, Colorado, \$22.55. On sale daily.
Colorado Springs, \$19.55. On sale daily.
Pueblo, Colorado, \$17.55. On sale daily.
Grand Canyon, Arizona, \$36.25. On sale daily.
Phoenix, Arizona, \$46.25. On sale daily.
Faywood Hot Springs, New Mexico, \$18.20. On sale daily.
Seattle, Tacoma, and Portland, \$48.75. On sale August 24 to 15th.

HOMESEEKERS' EXCURSIONS.

August 4th, 18th, September 1st and 15th, tickets will be sold from all points in Illinois, Iowa, Missouri, Kansas and Nebraska to points in New Mexico at one fare plus \$2.00 for the round trip.

ONE-WAY HOMESSEEKERS' TICKETS.

On the First and Third Tuesday of each month one-way second-class tickets will be sold from Kansas City, St. Joseph and east to points in New Mexico at half rate plus \$2.00.

TELL YOUR FRIENDS IN THE EAST.

You can deposit your money with the local agent, who will telegraph free of charge and have tickets furnished from any part of the world.
Pullman reservation secured in advance, and all information in regard to rates, time and connections cheerfully furnished on application.
W. J. BLACK, G. P. A., Topeka, Kansas.



For full particulars as to limits, routes, etc., address any agent of the Santa Fe System.

**H. S. LUTZ, Agent,
Santa Fe, N. M.**

OJO CALIENTE HOT SPRINGS.

These Celebrated Hot Springs are located in the midst of the Ancient Cliff Dwellers, twenty-five miles west of Taos, and fifty miles north of Santa Fe, and about twelve miles from Barranca Station, on the Denver and Rio Grande Railway, from which point a daily line of stages run to the Springs. The temperature of these waters is from 90 to 122 degrees. The gases are carbonic. Altitude, 6,000 feet. Climate very dry and delightful the year round. There is now a commodious hotel for the convenience of invalids and tourists. These waters contain 1,686.24 grains of alkaline salts to the gallon, being the richest alkaline Hot Springs in the world. The efficacy of

these waters has been thoroughly tested by the miraculous cures attested to in the following diseases: Paralysis, Rheumatism, Neuralgia, Consumption, Malaria, Bright's Disease of the Kidneys, Syphilitic and Mercurial Affections, Scrofula, Catarrh, La Grippe, all Female Complaints, etc., etc. Board, lodging and bathing, \$2.50 per day; \$14 per week; \$50 per month. Stage meets Denver trains and waits for Santa Fe train upon request. This resort is attractive at all seasons, and is open all winter. Passengers for Ojo Caliente can leave Santa Fe at 9 a. m., and reach Ojo Caliente at 4 p. m. the same day. Fare for round trip from Santa Fe to Ojo Caliente, \$7.40. For further particulars, address

**ANTONIO JOSEPH, Proprietor
Ojo Caliente, Taos County, N. M.**

**Santa Fe
Central
Railway**

**EL PASO,
CHICAGO,
DENVER,
SALT LAKE CITY.**

**DENVER & RIO GRANDE
AND
ROCK ISLAND SYSTEMS**

PASSENGER SERVICE—Through and Local on Schedule Time.
Close Connection with the Denver & Rio Grande for Denver, Pueblo, Salt Lake City and all points reached by that line.

FREIGHT TRAFFIC—Will commence on August 25th, when freight of all kinds will be handled for all points via the Rock Island and Denver & Rio Grande Systems.

For best service route your shipments from the East via Santa Fe Central.

PROMPT SERVICE • NEW EQUIPMENT

B. W. ROBBINS, G. F. & P. A., SANTA FE, N. M.

THE GEM CITY OF THE PECOS VALLEY

(Continued from Page Six.)

tages, and the prospects for a new railroad are very bright at this time. Two surveying corps are in the field headed from the north and east toward Roswell and the coming of either one of them will add greatly to its prosperity, in lowering freight rates and the cost of living.

Santa Fe Central Extension.

The extension of the Santa Fe Central from Torrance to Roswell is practically assured. Engineers are already in the field making the necessary survey which will occupy their attention until the early part of the coming year. Further than this the projected Roswell extension is being financed in the east at the present time by Pennsylvania capitalists.

The route to be traversed by the Roswell extension is through a country that is not only reputed to be, but is, one of the best stock raising sections in the great Southwest. The winters are mild and the grass grows during the fall season furnishing during the winter months an almost inexhaustible supply of forage, which keeps the stock in good condition. In the spring the rains bring a fresh supply of forage in the shape of green verdure, which in turn is cured in the fall season for the coming winter's fodder. The grasses to be found on these plains are white and black gramma and mesquite.

In the vicinity of the projected route of the Roswell extension are rich deposits of gold, silver, copper and coal. The fact of a railroad system traversing this region will admit of prospecting and the development of the rich mining resources.

The projected Roswell extension is hailed with delight by the chamber of commerce of Roswell and the business interests of the town generally. The general cry is for another railroad, on the ground that railroad building is town building. Any railroad, be it the proposed Roswell extension of the Santa Fe Central system, or any other, will receive the hearty support of the citizens of Roswell, and the residents of the wonderful Pecos valley through which it would have to pass.

OFFICIAL MATTERS.

Territorial Funds Received.

Territorial Treasurer Vaughn has received from George J. Pace, collector and ex-officio treasurer of Colfax County, \$354.20, taxes for the year 1902.

Notary Appointed.

Governor Otero has appointed Etienne de Pelisser Bujac of Carlsbad a notary public for Eddy County.

Board of Regents Organize.

The board of regents of the New Mexico reform school recently appointed by Governor Otero have met and perfected an organization. The board met at Tierra Amarilla last Tuesday and at that time there were elected the officers: Dr. J. S. Sloan of this city, president, and Col. Venecio-lao Jaramillo of El Rito, secretary and treasurer. There was nothing done as to the advertising for bids for the construction of the school and other buildings and the meeting adjourned to meet at the call of the president.

Territorial Board of Equalization.

The Territorial board of equalization will meet in this city Monday next in regular semi-annual session. The members of the board are James S. Duncan, Las Vegas; Robert P. Erving, Clayton; J. P. Hinkle, Roswell; Alejandro Sandoval, Albuquerque; Martin Lohman, Las Cruces; Venecio-lao Jaramillo, El Rito; and J. A. Mahoney, Deming. It is believed that the session of the board will be short and it will adjourn until a future date in order to give more time for the preparation of tax rolls by county assessors and for the examination of the same by Traveling Auditor C. V. Safford. The number of appeals before the board is quite large and some of these may be heard during the coming session.

HOTEL ARRIVALS.

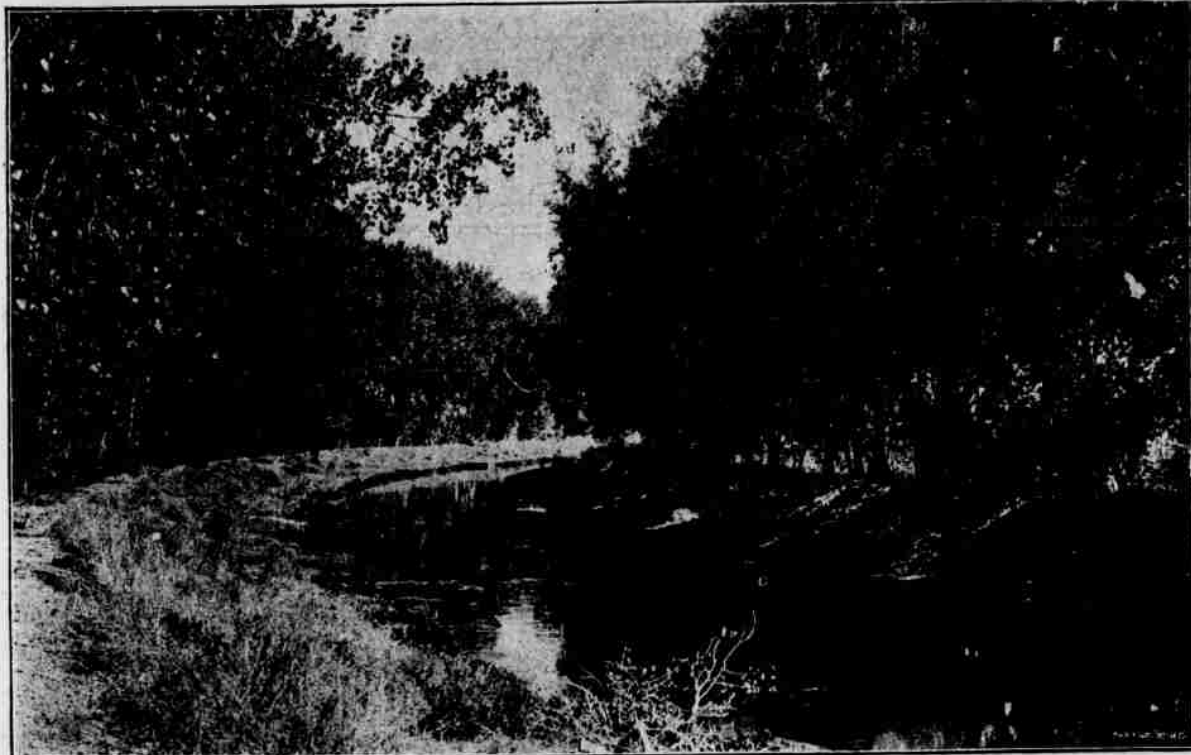
Normandie: J. H. McHolland, Alamogosa.
Palace: G. F. Rousseau, Alamogosa; Joe Gray, Denver; Mrs. S. A. Cox, Plattsburg, Mo.; Mrs. S. C. Hall, Chicago; J. H. Deering, Colorado Springs; H. C. Williams, Las Vegas; J. R. Smith, Marshall, Mo.

Claire: S. G. Hatfield, Denver; George E. Robinson, San Francisco; B. A. Sleyter, Albuquerque; Mattie Barker, Las Vegas; G. F. Wilson, Mankato, Minn.; E. D. Allen, Kansas City.
Bon Ton: Arthur Tinker, Gallup; C. W. Moore, Truchas; Vicente Montana, Tierra Amarilla; W. J. Dyer, Albuquerque; John Custer, Socorro; William Wagner, Cerrillos; C. D. Graham, Cerrillos; Thomas Burke, Durango; Amos W. Clarke, Rico; J. J. Burnett, Tres Piedras; Juan Romero, Encarnacion Romero, Pojoaque; Gus Johnson, Charles McIlvaine, El Paso; Mike O'Neal, Turquesa; George Murray, Las Cruces.

"HO OYSTERS HO."

The first of the season can be found only at the Bon-Ton Restaurant where they keep everything that the market affords. Give us a call we will treat you right.

The New Mexican Printing Company will do your job work with neatness and dispatch.



IRRIGATING DITCHES AT ROSWELL.

CATTLE RANCH FOR SALE.

Owing to sickness in my family I am obliged to seek a lower altitude, therefore I now offer to sell at a bargain my ranch and pasture of nearly 15,000 acres on Vermejo river and Caliente creek and its tributaries. The place is exceptionally well watered, well fenced and ditched, and has a recorded water right. There has been no stock in the pasture this summer, so the grass is exceptionally good. Good new house with ten rooms and a bath room ice house of 100 tons and modern cooling room, a never failing well of pure water and large cistern, good stabling, corrals, etc.

A young orchard of apples, pears, plums, peaches and cherries is well under way and forty acres well set in alfalfa. 100 acres more can be cultivated in alfalfa or other hay crops.

The ranch will yield about 100 tons of hay this season and can be made to grow 500 tons.

There is for sale with the place about \$4,000 worth of personal property consisting of cattle, horses, farm implements, furniture and the harvested crops. My house is about eight miles from Dawson, P. O., Colfax County, New Mexico. Time payments can be had for one-half the purchase price. Apply to me on the ranch or by correspondence. G. A. WHITNEY, Dawson N. M.

Call on the New Mexican Printing Company for engraved visiting cards.

Seize This Opportunity

To obtain any of the valuable articles mentioned FREE OF CHARGE

This is positively no hitch or scheme as hundreds are profiting by our offer.

Your choice of the articles mentioned and over 200 other useful household articles.

Dinner and Tea Sets, Side-boards, Extension Tables, Couches, Morris Chairs, Rocking add Dining Room Chairs, Silverware, Watches, Clocks and other Jewelry, Mantel Ornaments, Albums, Carpets, Curtains, Rugs, Talking Machines, Etc., Etc.,

OUR OFFER is made so as to introduce Our Goods to You and Your Friends.

Within the next 12 months in order to introduce our goods and bring them before the public we are going to make you the following proposition: In order to cover the expense of mailing, printing, etc., etc., we ask you to send 10 cents in coin and we will mail you our Richly Illustrated Catalogue, and our No. 1 Copy of the woman's Sin; the copy of the book itself cost 10 cents without the Catalogue, which is richly illustrated and valued at 15 cents. Now we are willing to mail you both books and all the details how to get the Premiums for 10 cents in coin. Do not delay as we will only issue a limited number of Premiums on this our first offer in your section.

Send at once for this offer, do not put it off but write at once before it is too late—Boys, Girls and Women look into this.

**LOUIE MANUFACTURING CO.
1033 Chestnut Street
Philadelphia, Pa.**

THE EQUITABLE LIFE ASSURANCE SOCIETY

"Strongest in the World"

IT IS NO ACCIDENT that
THE EQUITABLE SURPLUS
is now OVER \$75,000,000

And that it has paid DIVIDENDS to its policy-holders of over \$26,000,000 in the last TEN YEARS. It is simply the result of long years of economical management. It is no accident that there is such a great army of policy-holders. ARE YOU ONE OF THEM? The most progressive and successful people in the world naturally turn to the strongest and best Company in the world for their Life Assurance. Take your policy out TO-DAY.

MRS. L. A. HARVEY, AGENT.

102 Chapelle St., Santa Fe. Office Hours 8-12

ON AUGUST 20, 1903, Santa Fe Central Railway

IN CONNECTION WITH THE



Will Open a New Passenger and Freight Line Between

SANTA FE, N. M.,

AND

VIA TORRANCE **EL PASO, TEXAS,**

THUS IS THE LONG-WISHED FOR EVENT ACCOMPLISHED.

Call on local agents for full information regarding this new line, the country it runs through, Freight and Passenger Rates and other desired particulars.

A. N. BROWN, G. F. & P. A., E. P. N. E. SYSTEM, EL PASO, TEXAS.

Maxwell Grant.

FARMING LANDS UNDER IRRIGATION SYSTEM.

These farming lands with perpetual water rights are now being offered for sale in tracts of forty acres and upwards. Price of land with perpetual water rights from \$17 to \$35 per acre, according to location. Payments may be made in ten year installments. Alfalfa, grains, fruits of all kinds, and sugar beets grow to perfection.

GOLD MINES.

On this Grant, about forty miles west of Springer, N. M., are the gold mining districts of Elizabethtown and Baldy, where important mineral discoveries have lately been made. Claims on unlocated ground may be made under the mining regulations of the company, which are as favorable to the prospector as the U. S. government laws.

Near Raton, N. M., on this grant, are located the Coal Mines of the Raton Coal and Coke Company, where employment may be found at good wages for any wishing to work during the seasons that farming or prospecting can not be successfully done.

For particulars and advertising matter apply to

**THE MAXWELL LAND GRANT CO
RATON, NEW MEXICO**

THE DENVER & RIO GRANDE SYSTEM

Denver & Rio Grande, Rio Grande Western, Rio Grande & Santa Fe and Rio Grande Southern Railroads.

THE POPULAR LINE TO

Colorado Springs, Pueblo, Cripple Creek, Leadville, Glenwood Springs, Aspen, Grand Junction, Salt Lake City, Ogden, Butte, Helena, San Francisco, Los Angeles, Portland, Tacoma, and Seattle. Also Reaches all the Principal Towns and Mining Camps in Colorado, Utah and New Mexico.

THE TOURIST'S FAVORITE ROUTE

To all Mountain Resorts

The Only Line Passing Through Salt Lake City Enroute to the Pacific Coast

**THROUGH
SLEEPING
CARS**

BETWEEN DENVER AND

ALAMOSA SALT LAKE CITY
CRIPPLE CREEK OGDEN
LEADVILLE PORTLAND
GLENWOOD SPGS SAN FRANCISCO
GRAND JUNCT'N LOS ANGELES

DINING CARS SERVICE A LA CARTE ON ALL THROUGH TRAINS

J. A. EDSON, Manager,
Denver, Colo.

A. S. HUGHES, Gen'l Traffic Manager,
Denver, Colo.

S. K. HOOPER, Gen'l Pass'r and Ticket Agent, Denver, Colo.

Legal blanks of all kinds for sale at The New Mexican office.

THAT SPECIAL SALE

Last week we sold nearly every article advertised at a specially reduced price, which convinced us that our "ad" is largely read and that the people of Santa Fe appreciate bargains when they can get them.

This week we are offering special bargains in Dishes and Kitchen Furniture. Let us convince you.



COME AND SEE OUR NEW FURNITURE

Make your home comfortable during the hot weather. With the many conveniences we offer you can convert your home into a summer resort. We aim to provide something newer, something different, something better than other stores, and at lower prices.



The Latest Improved
AMERICAN
WASHING MACHINE
—Best on Earth—

A Wagon's First Cost

is not all there is to it. There are plenty of low priced wagons (mighty dear in the end), that actually look well—at first. You can't see the paint-covered wood—pithy, "dead," the defective axle-wood, or foresee the shrinking, rattling, loosening of spokes, the tire setting and constant repairs, that will rise up to trouble you in time. All said and done, it pays to buy once for all a dependable wagon.

STUDEBAKER WAGONS

are that kind. That is a matter of common knowledge—testified to by every man who ever bought one. Built on honor by master mechanics out of selected and perfectly seasoned materials. Definite, sterling worth in each job of Vehicles and Harness, that result in longer and better service than you have a right to expect. You don't make mistakes if you pin your faith there.

Studebakers in Your Town.

The undersigned are the local sales agents. We carry a generous stock, we'll order and quickly get anything you want. You see the goods and know what you are buying. We stake our reputation on pleasing you. Always ready to show you. Give us a call.



Santa Fe Hardware & Supply Co.,
Santa Fe, N. M.

THE FARMER'S FRIEND

The pride of the family—Our new STUDEBAKER



HANDSOME HANDMADE HARNESS.

At Prices less than you would expect to pay for machine made goods. We are sole agents for Padgett Bros.' Cowboy Saddles. Made on honor. \$35 will buy the saddle you have been paying \$50 for. We have the latest thing in Ladies' Saddles, price reduced from \$35.00 to \$22.50.



SANTA FE HARDWARE & SUPPLY CO.

SANTA FE, N. M.

HONEST GOODS
HONEST PRICES

Jobbers and Retailers

OUR MOTTO:
LIVE, AND LET LIVE!

WANTS AND MISCELLANEOUS ADS.

ANY one desiring male help of any kind please notify Alan R. McCord, Secretary Capital City Band.

For Sale.

A POSITIVE Bargain. The Santa Fe Planing Mill, cause of sale old age. Apply P. Hesch, Santa Fe.

FOR RENT—New piano for concerts, dances and special occasions. Apply Claire Hotel.

FOR RENT—Five room cottage No. 303 Washington avenue. For further particulars inquire of Mrs. Thomas.

WANTED—Ten teamsters. Wages \$2.50 per day. Apply to Truchas Labor Co., Truchas, N. M., or C. L. Polard & Co., Espanola, N. M.

SOLO VIOLINIST—Engagements accepted for private musicals, concerts dances, etc. Call and learn concerning terms. GEO. H. BAIN.

FOR SALE.

\$85 Horse, Buggy and Harness \$85 Good gentle family driving horse. First-class rubber tired top buggy, almost new.
\$20 Phaeton, newly painted \$20
FRANK ANDREWS.

BLOODED RAMS.

Two Rambouillet Rams, high grade. Orders promptly filled for this class of stock. Call and see them in corral of Leo Hirsch. C. P. JONES.

LOST—On last Saturday afternoon between Motley's Restaurant on Galisteo street and the Oxford Club on San Francisco street, a pocketbook containing quite a large sum of money. The finder will be suitably rewarded by bringing the same to the New Mexican printing office where property will be proved and reward paid. A. P. C. Coape.

WANTED—Several persons of character and good reputation in each state (one in this county required) to represent and advertise old established wealthy business house of solid financial standing. Salary \$21 weekly with expenses additional, all payable in cash direct each Wednesday from head office. Horse and carriage furnished when necessary. References. Enclose self-addressed envelope. Colonial, Caxton Building, Chicago.

MEXICAN TRAIN

ROBBERS SENTENCED.

El Paso, Texas, Sept. 12—William West, Lee Smith and James Paris, who robbed the Mexican Central train and the Wells-Fargo express at Bermejo, Durango, July 23, 1902, have been sentenced at Mapimi to 15 years imprisonment and fined \$1,000 each. They secured in the robbery \$52,000, all but \$10,000 of which has been recovered.

Church Announcements.

Guadalupe Church.—Tomorrow, Sept. 13. The 1st mass, will be at 6:00 a. m. Second mass at 9:30 a. m. Rosary and benediction of the Blessed Sacrament at 6:30 p. m.

Cathedral.—Fifteenth Sunday after Pentecost, Sept. 13, 1903. First mass at 6 o'clock a. m. Second mass at 9:30, sermon in English. Third mass at 10:30, sermon in Spanish. At 6:30 p. m., vespers and benediction.

Presbyterian Church.—9:45, Sabbath school; 11 o'clock, sermon by Pastor; 7 o'clock Y. P. S. C. E.; 8 o'clock sermon on Intolerance. First in series on Ugly Things. Everybody welcome. W. Hayes Moore, Pastor.

Church of the Holy Faith (Episcopal) Palace Ave., Rev. W. R. Dye in charge.—Sunday School with Bible class at 9:45 a. m. Morning prayer with sermon at 11 o'clock. Evening prayer at 5 o'clock. Litany service Wednesday afternoon at 5 o'clock. Public cordially invited.

St. John's M. E. Church, Don Gaspar ave.—Sunday-school, 10 a. m.; Preaching services at 11 a. m., and 7:30 p. m. class meeting, 12 m.; Junior League, 4 p. m.; Epworth League, 6:45 p. m. Morning subject "Christian Liberty." Evening subject "Sin and Salvation." Prayer-meeting, Wednesday, 7:30 p. m. W. A. Cooper, pastor.

Nice Furnished Room near Plaza. Apply 127 Cathedral St.

WANTED—Small furnished cottage or suite of rooms for light housekeeping. Two in family. Address stating location and terms, P. O. Box 225.

GRADUATE NURSE—Miss Amelia Reese, a graduate of The Battle Creek Sanitarium and of The Chicago Medical Missionary Training School for Nurses, will answer calls for general, obstetrical and surgical nursing. Massage and manual movements a specialty. Her home is with Mrs. Wm. Schneppe at 256 College Street, Santa Fe, N. M.

Delightful OCEAN TRIPS From GALVESTON, TEXAS, to NEW YORK, via MALLORY S. S. LINE
Steamers Wednesdays and Sundays at noon. Ticket, including meals and berth, costs much less than ALL RAIL. Write for pamphlet "Ocean Trips." J. B. DENISON, Agent, GALVESTON, TEX.

SANTA FEANS STRIKE IT RICH.

Large and Valuable Ore Body in California Property.

There are several Santa Feans who from latest reports have struck it rich. They are stockholders in the United Gold and Copper company organized under the laws of this Territory with headquarters in Chicago, and of which R. M. Wilber, secretary of the Federal Life Insurance company of that city, is president. The company has valuable mining interests in Grant County. About a year ago the company purchased an extensive placer mining property in the Feather river valley, Cal., and upon which much development work has been going on for six months. This morning one of the stockholders of the company, a resident of this city, received the following dispatch from Mr. Wilber: "Great find on company's California property yesterday. A million dollars of ore in sight."

From this dispatch it is concluded that in developing the placer deposits a rich body of ore in place has been struck. Mr. Wilber visited the Capital and the Territory a year ago and is well and favorably known here and in Grant County. He expects to again visit the Territory this fall to examine and inspect the company's properties and will extend his trip to California to look after affairs connected with the great strike reported in the above dispatch.

GOOD FLOW NOW HAD.

Work on the New Well to Be Continued.

There is already a good flow of water from the well that is being sunk on the grounds of the Territorial capitol. The well is only down about a third of the depth that it is proposed to sink it but there is now three feet of water in it. The pump is kept in operation to allow the work to proceed without interference by the water that is constantly rising in the excavation.

The well when finished will supply the capitol building with drinking water and also furnish enough water for irrigating the grounds. The work is being done under the direction of D. L. Miller, superintendent of grounds and buildings.

"THE MOST POPULAR"

Restaurant in the city is the Bon-Ton, because they keep everything in the eating line. They never sleep, and they employ the best cooks and waiters in the business. Convince yourself.

Subscribe for the New Mexican.

U. S. Weather Bureau Notes.

Forecast for New Mexico: Generally fair tonight and Sunday; warmer weather Sunday and in north portion tonight. Yesterday the thermometer registered as follows: Maximum temperature, 70 degrees, at 10:20 a. m.; minimum, 53 degrees, at 4:00 a. m. The mean temperature for the 24 hours was 62 degrees. Mean daily humidity, 15 per cent. Precipitation 0.05 of an inch. Temperature at 6:00 a. m. today, 44 degrees.

Call on the New Mexican Printing Company for engraved visiting cards.

Wool Market

St. Louis, Mo., September 12.—Wool, unchanged. Territory and western medium, 17¢; fine medium, 15¢; fine: 15¢ to 16¢.

Stock Market.

New York, Sept. 12.—Closing stocks—Atchison, 66½; Atchison preferred, 92½; New York Central, 122; Pennsylvania, 134½; Southern Pacific, 76; Union Pacific, 75½; Union Pacific preferred, 86½; United States Steel, 20½; United States Steel preferred, 70½.

MARKET REPORT.

MONEY AND METAL.

New York, Sept. 12.—Money on call nominal. Prime mercantile paper 6¢ to 6½ per cent. Bar Silver, 56½¢. New York, Sept. 12.—Lead, ann copper unchanged.

GRAIN.

Chicago, Sept. 12.—Close, Wheat, Sept., 80½; Dec., 81½ @ 82. Corn, Sept., 51; Dec. 50½. Oats, Sept., 35½; Dec. 37½ @ 37½.

PORK, LARD, RIBS.

Pork, Sept., \$13.50; Oct., \$13.63½. Lard, Sept., \$9.25; Oct., \$8.32½. Ribs, Sept., \$8.55; Oct., \$8.67½.

STOCK.

Kansas City, Mo., Sept. 12.—Cattle, market steady. Native steers, \$3.50 @ \$5.40; Texas and Indian steers, \$2.50 @ \$3.60; Texas cows, \$2.05 @ \$2.55; native cows and heifers, \$1.50 @ \$4.75; Stockers and feeders, \$2.00 @ \$5.80; bulls, \$2.00 @ \$3.40; calves, \$3.00 @ \$5.50; western steers, \$3.50 @ \$4.60; western cows, \$1.75 @ \$2.80.

Sheep, market steady. Muttons, \$2.50 @ \$4.00; lambs, \$2.00 @ \$4.30; Range weathers, \$2.40 @ \$4.00; Ewes, \$3.00 @ \$3.75.

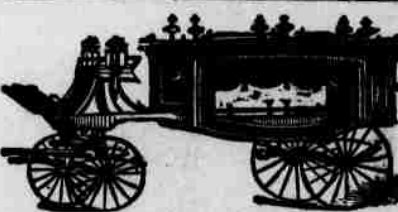
Chicago, Sept. 12.—Cattle, market steady. Good to prime steers, \$5.50 @ \$6.15; poor to medium, \$4.00 @ \$5.25; stockers and feeders, \$2.50 @ \$4.15; cows \$1.50 @ \$4.60; heifers, \$2.00 @ \$5.00; canners, \$1.50 @ \$2.75; bulls, \$2.00 @ \$5.20; calves, \$3.10 @ \$6.80; Texas fed steers, \$3.25 @ \$4.65; western steers, \$3.25 @ \$4.50.

Sheep, market steady. Good to choice weathers, \$3.00 @ \$3.65; fair to choice mixed, \$2.00 @ \$3.00; western sheep, \$2.15 @ \$3.70; native lambs, \$3.50 @ \$5.50, western lambs, \$5.00 @ \$5.25.

BOOKS AND STATIONERY,

Periodicals, School Books, School Supplies, Stationery Sundries, Etc. CATHOLIC CATECHISMS AND PRAYER BOOKS IN SPANISH. SPANISH NOVELS A SPECIALTY.

Books not in stock ordered at eastern prices; subscriptions taken for all periodicals JACOB WELTMER



SCIENTIFIC EMBALMING

At Our Up-to-Date Undertaking Parlors

The Latest Scientific Methods of Embalming are Employed. Calls Answered from the Parlors Day or Night or by DOROTEO SENA, Agua Fria Road. Our Parlors consist of a Nicely and Appropriately Fitted Up Suite at No. 112 Lincoln Avenue, West Side Plaza, Santa Fe, New Mexico.

DUDROW, KENNEDY & TOWNSEND, Props.

FRED MONTENIE

Scientific Embalmer and Funeral Director.

GOLD'S OLD CURIOSITY SHOP

ABE GOLD, Proprietor. ESTABLISHED 1859. JAKE GOLD, Manager

Indian and Mexican Curios. Free Museum.

The largest and best stock of Indian Baskets, Blankets, Pottery, Etc., in the country.

Mexican Drawn Work a Specialty.

Don't fail to call and see us when in the city. Send for a Catalogue.

311-317 San Francisco Street, Corner Burro Alley, Santa Fe, New Mexico.

