

8-25-1903

## Santa Fe New Mexican, 08-25-1903

New Mexican Printing Company

Follow this and additional works at: [https://digitalrepository.unm.edu/sfnm\\_news](https://digitalrepository.unm.edu/sfnm_news)

---

### Recommended Citation

New Mexican Printing Company. "Santa Fe New Mexican, 08-25-1903." (1903). [https://digitalrepository.unm.edu/sfnm\\_news/1738](https://digitalrepository.unm.edu/sfnm_news/1738)

This Newspaper is brought to you for free and open access by the New Mexico Historical Newspapers at UNM Digital Repository. It has been accepted for inclusion in Santa Fe New Mexican, 1883-1913 by an authorized administrator of UNM Digital Repository. For more information, please contact [disc@unm.edu](mailto:disc@unm.edu).



## TO VISIT SANTA FE

General and Mrs. John C. Black Will Arrive in This City September 14.

## HOSPITABLE 'FRISCO

Judge McFie Says That the Entertainment Provided the G. A. R. Was Lavish.

Judge John R. McFie has returned from San Francisco where he was in attendance at the National encampment of the Grand Army of the Republic as a representative from the department of New Mexico.

Judge McFie says that General and Mrs. John C. Black will visit this city September 14 and that the city and Carleton Post will join in making arrangements for the reception of the distinguished visitors. He states that the encampment was one of the most successful ever held and that the state of California as well as the city of San Francisco did everything to make the gathering a great feature in Grand Army history. The entertainment provided was all that could have been desired and everywhere was hospitality to be found.

"I spent six days in San Francisco," said Judge McFie, "and the encampment was a success in every way. The state and city it is said spent \$50,000 in entertaining the Grand Army and the expense was divided between them. The decorations were on a most elaborate plan and the two immense arches that had been erected near the center of the city were simply ablaze with thousands of electric lights. The large domes of the city hall and union station were studded with many lights and the business houses of the city vied with one another in the elaborateness and beauty of the decorations. The whole affair was carried out on a most extensive scale and the encampment was one of the greatest in the history of the organization.

"In the parade there were some 7,000 men in line, but it was estimated that there were about 30,000 old soldiers in the city. So many were incapacitated through wounds and other causes that they could not stand the marching. There were nine men from New Mexico in the procession and there were several others from the Territory who were present but who did not march because they were not members of the Grand Army. Those in line were Jacob Weimer and myself from Santa Fe, Valentine Herbert, J. M. McDonald and Adolph Harsch of Albuquerque, Dr. J. M. Patton of White Oaks, Richard Hudson of Deming and J. M. Warner of Silver City. One of the features of the parade was the carrying of the old battle flags of the Pennsylvania regiments. The state of Pennsylvania granted the Pennsylvanians permission to take these old banners from the capitol building at Harrisburg, where they are kept, and carry them to 'Frisco. Of course some of them were so badly torn and mutilated from being in many battles that they were furred. Another feature was the beauty and expensive character of the badges given the voting delegates. Every encampment city gives a particular badge to the representatives and many of these have been beautiful, but the San Francisco badge was the most elaborate ever attempted. It is said that the badges cost the hosts about \$11 each and that they will never tarnish as they are gold plate.

## CLOUDBURST IN KANSAS RAISES RIVER SIXTEEN FEET.

Kansas City, Aug. 25.—A special from Marysville, Kan., says that the cloudburst there early today caused the Big Blue river to rise sixteen feet in seven hours and to flood fifty houses in Marysville. The people in the bottoms took refuge in the tree tops and seventy-five were rescued in boats. So far as known no lives were lost.

## COOKS' AND WAITERS' STRIKE Liable to Prove Failure.

Chicago, Ill., Aug. 25.—The striking cooks and waiters made another desperate effort today to effect the strike order which nearly proved a failure yesterday, but they met with indifferent success, only a few more men coming out.

## STRIKE AT FAIRVIEW.

High-Grade Ore Being Taken Out of the Great Republic at Kingsbury's.

Special to New Mexican.

Fairview, N. M., Aug. 25.—A rich strike on the Great Republic at Kingsbury's camp, Grafton, is causing some stir in mining circles. An expert, representing the parties who have leased and bonded this property, arrived here three days ago and last night reported a very rich streak on one side of the vein varying from 4 to 8 inches, samples of which run over 2,200 ounces silver and 13 ounces gold, while the vein, 4 feet wide, averages about \$40. This is in the new shaft on which work has been going on for about two months.

The upraise in the tunnel of the Goodenough mine at Chloride is also in bonanza. Five samples of the best ore from a 4-foot vein gives an average of about \$130 to the ton. The owners are sorting a shipment to prove the value at the smelter.

## MOYER DENIES TERMS.

Says That Statement Made Yesterday Was Wrong.

Cripple Creek, Aug. 25.—The executive committee of District Union No. 1, W. F. M., issued a statement today from President Moyer denying the alleged terms of the settlement with the Portland mine, made public yesterday. The committee says that the settlement with the Portland was a simple one as will be shown when the mine opens and the men return to work. At a meeting attended by representatives of thirty-five mining companies operating in Cripple Creek it was agreed that no individual should enter into negotiations with the Western Federation of Miners regarding the settlement of the strike if any advances should be made. The mine owners hold that they have no differences with the miners and that there is nothing to discuss. No work will be resumed on any property except under direction of a committee of the association.

## A BOY MURDERER ESCAPES FROM JAIL.

Tucson, Ariz., Aug. 25.—Five prisoners, including Carlos McCormick, the boy murderer, aged 14, made their escape from the Pima County jail at an early hour this morning by digging a hole in the wall of the jail and dropping from the second story by means of a rope made from their blankets. All of the prisoners except one were Mexicans under sentence for smuggling and selling liquor to Indians. The escapes had been at liberty about four hours before the jail officers discovered their absence.

## FATAL STROKE OF LIGHTNING IN ILLINOIS.

Peoria, Ill., Aug. 25.—A severe rain and electric storm passed over Moseville, this county, shortly after 7 o'clock this morning, doing considerable damage. Quite a number of people were congregated on the porch of a hotel and a bolt of lightning struck a tree directly in front of the hotel and instantly killed George Pence, and injured John Craw, John Eppinger, and third man whose name is unknown. The injured will probably recover.

## STILL MASSACRING.— PRESENTS REFUSED.

Constantinople, Aug. 25.—Three Bulgarian villages near Tcherkeskol, Vilayet of Adrianople, reported to have been attacked by Circassians and the inhabitants massacred. The presents of cigarettes and food which the Sultan sent to the Russian squadron shortly after it anchored off Inada were not permitted to be received on board the Russian ships, Admiral Kruger refusing to accept them.

## FIRST IN SIXTY YEARS.

Media, Aug. 25.—Robert Kilpatrick was hanged in the jail yard here today for the murder in February, 1902, of Elizabeth 'Bearmore, his housekeeper. He is the first white man executed in Delaware County in more than 60 years.

## STAGE HELD UP.

Spokane, Wash., Aug. 25.—Advices received here state that the mail stage between Canon City and Whitney, Ogo, was held up last night on Dixie mountain and all the mail taken. No details are available.

## TWO BURNED TO DEATH IN A HOTEL FIRE.

Auburn, Cal., Aug. 25.—Fire destroyed the Auburn hotel at an early hour this morning. Daniel Christy and Bert Mather were burned to death.

Loose leaf ledgers at the New Mexican.

## SHE HAD TO HURRY

Close Race in Which the Defender Beats Her Rival by a Narrow Margin.

## WEATHER WAS HAZY

Shamrock Had a New Mainsail But It Availd Her Nothing—Triangular Course.

New York, Aug. 25.—The prospects for another good contest between the Reliance and the Shamrock III today were encouraging at 10 o'clock. A fine seven-knot breeze was blowing out southeast, the sea was fairly smooth and the horizon clear for many miles. There was every indication that the wind would hold throughout the day, giving the yachts, especially the Shamrock, every opportunity to prove their worth over the thirty-mile triangular course which, according to the program, must be sailed in the second contest. The Shamrock had a new mainsail and to those ashore it looked very much of an improvement over the old one.

The New York regatta committee signalled a triangular course, south for the first leg and other two legs northeast by east one-half east and northwest by west.

The starting gun was fired at 11 o'clock. The Reliance crossed the line first. The unofficial starting time was: Reliance 11:00:27; Shamrock 11:02. Apparently the Shamrock was handicapped about 25 seconds as she held away too long and crossed that much after the handicap gun was fired.

11:25 a. m.—The Reliance has a lead of a quarter of a mile. At 11:45 the Shamrock went about on the starboard tack after getting to the weather side of the Reliance. Looks as if the Shamrock had gained on the Reliance during the past few minutes.

12:05.—The Shamrock has been gaining on the Reliance until she secured a windward position but the Reliance is fully a quarter of a mile in the lead.

12:30.—The Reliance went on a port tack at 12:21:05; Shamrock, 12:23:35. Weather very hazy, yachts difficult to discern. Official time, start: Reliance, 11:00:36; Shamrock, 11:02:00.

12:40.—As the Reliance crossed the line 1 minute and 24 seconds ahead of the Shamrock, she will have to lead the Challenger at the finish by at least 3 minutes and 21 seconds to win race.

New York, Aug. 21.—(By Marconi)—1:05 p. m.—Both boats have turned the first mark and set the spinnaker to the second mark.

Rival wireless telegraph companies are interrupting the service of the Marconi system without the apparent purpose to transmit news. Both boats have almost passed out of the shore range on account of the haze and, therefore, the race bulletins may be delayed.

1:54 p. m.—One of the excursion steamers is coming in off the shore and is headed for the lights. Looks as if the yachts had turned the second mark.

2:02 p. m.—The movement among the excursion fleet indicates that the yachts are four or five miles from the finish. One yacht seems to be coming out of the haze, four miles from lights.

2:05 p. m.—Both yachts can now be seen and the leading one is apparently a mile and a half ahead.

2:08 p. m.—If it should happen to be the Reliance in the lead she looks as if she should win the race by margin of less than two minutes.

Unofficially announced that the Reliance wins by 52 seconds.

New York, Aug. 25.—By tug.—The official time of the finish of the Reliance is 2:15:30. Shamrock, 2:20:10. Elapsed time, Reliance, 3:14:54; Shamrock, 3:18:10. Reliance wins by 1 minute and 19 seconds.

## TO SURVEY TO ROSWELL.

Santa Fe Central Surveyors Will Leave This Evening.

A surveying corps of the Santa Fe Central railway under the direction of J. R. Farwell, engineer in charge, will leave this evening for Torrance from which point preliminary surveys will be run to Roswell a distance of between 95 and 100 miles, with a view of extending the Santa Fe Central to the county seat of Chaves County. The party will run several lines and will be in the field some weeks. The greatest difficulty will be experienced in carrying water as it is quite dry in that section of New Mexico at present.

Try a New Mexican want "ad."

## DEMOCRATIC CONVENTION

Johnson of Cleveland and Zimmerman of Springfield Fighting for Control in Ohio.

## CONTEST WARMING UP

Gubernatorial Nomination Overshadows All Else as Winner Will Name Senatorial Candidate.

Columbus, Ohio, Aug. 25.—The preliminary meetings of the Democratic state convention here today are the most hotly contested in the history of the party in this state. The contest between Mayor Tom L. Johnson of Cleveland and John I. Zimmerman of Springfield for the gubernatorial nomination overshadows everything else. If Johnson wins at the district meeting this afternoon and at the meeting of the conventions tonight, he will be able to name the senatorial candidate and the rest of the ticket, and control the new State Central committee as well as secure the adoption of his platform. If Zimmerman controls the district meetings, delegates and committees he will be nominated and the conservatives will return to the control of the party.

## DEMOCRATS AND POPULISTS TO FUSE BY TELEPHONE.

Columbus, Neb., Aug. 25.—William J. Bryan arrived early today for the state Democratic convention which convenes this evening, and the morning trains brought in several hundred delegates who, with few exceptions, are stated to bear instructions favoring fusion with the Populists. The Democratic convention and the Populist convention at Grand Island will keep in close communication by long distance telephone.

## Pops Favor Fusion.

Grand Island, Neb., Aug. 25.—At the Populist state convention which meets tonight it is believed that neither the Populist nor ex-Governor Pointer, who is led by favor the endorsement of the Republican candidate for regent, nor those of ex-United States Senator Allen, who wants the convention to follow the middle-of-the-road idea, will dominate the gathering, and that a big majority of the delegates will favor fusion as in former years.

## ASSAULTED AND LIFE THREATENED BY UNION MEN.

Colorado Springs, Aug. 25.—Walter Keene, a non-union employee of the Telluride Reduction company of Colorado City, was assaulted this morning at 7 o'clock by some union employees who are alleged to have threatened his life. Manager Fullerton immediately issued a statement in writing to mill and smelter men threatening to non-unionize the mill throughout in the event of a recurrence of the offense.

## SEVERAL SPECTATORS SEVERELY SHOCKED.

Pueblo, Aug. 25.—Frank Pryor's furniture warehouse on Second street was destroyed, together with its contents, by fire this morning. The loss is about \$25,000. A defective wire was the cause. A panic was caused during the fire by a live wire and several spectators were shocked.

## FELL OVER CLIFF.

Denver, Colo., Aug. 25.—A Miss Mary A. Jenkins, a prominent architect of this city, was killed late yesterday afternoon at Decker's Springs in the Platte canon by falling over the cliff.

## THE JOSEPH NEWMAN CO.

Wherever the Joseph Newman company has appeared it has been highly praised by the press, and Manager Dettlebach assures his patrons a genuine treat when the organization comes to Santa Fe tonight. This being Mr. Newman's first appearance in this city he promises the people a feast of good things. He will sing only his best and funniest songs, and tell only his brightest and wittiest stories. He has with him a talented quartette of clever girls all of whom have more right than the usual run to write after their names the word "artist."

Much interest is being manifested in the coming of these young people, and in all probability they will be greeted by the crowded house they deserve. The company appears for one night only. Reserved seats may be secured at Irland's Pharmacy.

Justice of the peace blanks, in English and in Spanish, for sale in large or small quantities by the New Mexican Printing Company.

## WITHDRAWS FROM RACE

R. M. Turner of Silver City and Other Members of the Bar Indorse Judge Pope.

Judge W. H. Pope of this city, who is a candidate for appointment as Associate Justice of the Territorial Supreme court to fill the vacancy existing on the bench, yesterday received a letter from R. M. Turner, Esq., of Silver City, who has been a candidate for the same position, announcing the latter's withdrawal and enclosing a petition for Judge Pope's appointment signed by Mr. Turner and other members of the Silver City bar. This was forwarded to the attorney-general's office in Washington for file with the other recommendations of Judge Pope.

## TWO YEARS FOR WORK

About \$100,000 Will Be Expended by the Government Upon Great Zuni Irrigation Schemes.

The plans for the reclamation of the country in and adjacent to the Zuni pueblo are ready for the actual work having been approved by the department of the interior. The plans call for the spending of about \$100,000, and of this amount more than \$80,000 will be expended on the great dam that will be constructed. This dam will have a length of 450 feet and will be over 300 feet at the base. The height will be 60 feet and at the top the width of the wall will be 20 feet. The construction is what is known as rock filled with an hydraulic earth fill in the front. The water will be drawn from the Zuni river and will be carried to the storage reservoir by tunnel. The distribution of the water from the reservoir to the various parts of the territory to be brought under the general plan for irrigation will be by canals and it will require about twelve miles of these canals to do the work.

The site of the reservoir is at the mouth of a canon and is a natural site for the dam, such as is proposed. The formation of the country at this point will allow the dam about a square mile of water surface and this will more than suffice for the needs of the community. The land to be brought under the general plan is a fertile valley that lies below the dam and is but a short distance away. The water will be distributed throughout this area by means of canals, and the canal system will be one of the most complete ever attempted. The whole thing will prove of inestimable benefit to the Zuni Indians and this is really the first thing that has been done for them along this line.

The work will begin as soon as the necessary machinery and other apparatus can be secured and installed. It will afford employment to several hundred persons and Indian labor will be employed as far as it is practicable. The actual work will be inaugurated this fall and it is expected that two years will be required for the completion of the whole scheme.

## ONE OF THE LARGEST.

The Davis-Chavez Wedding Proved a Feature For Galisteo.

The wedding of George Davis and Miss Angelita Chavez Saturday was one of the most important events that has occurred in recent years at Galisteo. The wedding was one of the largest ever celebrated there and the merrymaking lasted through the day and well into the next morning. The ceremony was performed at the Remedios church by the Rev. Father Mayur. After the ceremony the procession was formed and the guests were treated a reception at the Chavez home from 11 to 12 o'clock. The afternoon was spent in dancing and pleasure making and the supper was served at the Chavez residence. There was a ball in the evening and the procession was formed and marched to the San Jose hall where the dancing lasted until 3 o'clock. The guests then escorted the bride and groom back to the house, the musicians leading. The display of fireworks was one of the features of the wedding. At the afternoon festivities addresses were delivered by J. H. M. Alarid and Jose Leon Madrid, who spoke in Spanish and Pedro Ortiz, who spoke in English. Mr. and Mrs. Davis will make their home at Galisteo.

The bride is a daughter of Mr. and Mrs. Ascencion Chavez and the groom, the son of Captain and Mrs. Sylvester Davis. The families are very prominent in southern Santa Fe County and the young people are popular and well-liked by a large circle of acquaintances and friends.

The New Mexican bindery has just turned out a new and large supply of superior scratch pads. These are sold at 10 cents per pound and are handy for memoranda and calculations for an office.

Try a New Mexican want "ad."

## ROOT HAS RESIGNED

Upon Request of President Will Continue to Hold Office Till January 1.

## GOV. TAFT TO SUCCEED

Resignation Was Formally Presented on the 19 of August—Made Public Today.

Oyster Bay, Aug. 25.—Secretary Root presented his resignation formally to the President August 19. It was accepted with the understanding that Root continue as secretary at least until January 1. Governor-General William H. Taft of the Philippines will succeed Root.

## SALOONKEEPER KILLS BREWERY OVEH \$2.50.

Albuquerque, Aug. 25.—A special to the Journal-Democrat says:

El Paso, Texas, Aug. 24.—Frank D. Brown, auditor of the San Antonio Brewing association, was shot and instantly killed this afternoon by Ben Massey, one of the proprietors of the Angelus bar. The shooting was the result of a dispute over which the brewing was due from Massey.

The saloon man's office and express company, Brown, the latter of Massey's face. In an instant Massey drew a six-shooter and fired four shots, three of which took effect, and Brown expired within a few moments.

Massey was disarmed by brewery employees and handed over to the police. Brown's home was in San Antonio where he was prominent. He traveled throughout this state and New Mexico checking up on the various breweries. Massey is well known in cities of east Texas. Massey claims that he was in defense. Massey is but 25 and weighs 135 pounds. His weight was about 200.

## WORK HAS BEGUN ON THE NEW BRIDGE.

Work on the new bridge on Don Gaspar avenue has begun and the force of men will be increased as the occasion demands. Today the men began the preparations for the erection of derricks and other machinery that will be required in the handling of the heavy materials used in the bridge's construction. The bridge will be of stone and cement and will have no timber at all in its make up. The cost of the new structure will be \$4,600 and will be one of the finest pieces of work in this section.

Work at present will be under the supervision of William Kellett, foreman for Walter S. Sharpe of Eldorado, Kan., who is the contractor and who is detained at his home by illness. Mr. Kellett is preparing to put the stone quarry about two and a half miles northeast of town and from which the stone for the construction of the bridge will be quarried, into good shape for effective and quick work.

## CANDIDATE FOR CONSUL.

Major O. G. Myhre Would Like the Position at Chihuahua.

Says the Silver City Enterprise: "Major O. G. Myhre has announced his candidacy for appointment in the United States consular service. His application has been made general in its scope and he has received endorsements of numerous high Territorial officials. Should the consulate at Chihuahua be declared vacant, it is understood he will be a candidate for that post. Mr. Myhre is a valued resident of this city, has taken an active part in the organization of the military company and in other ways identified himself with the best interests of the community. His appointment would be a source of gratification to his Silver City friends. Besides it would be a matter of territorial pride as New Mexico is not represented in the consular service although Arizona has two appointees."

## HEARING IS HAD IN THE CONTEMPT CASE.

The commissioners of the Acaquia Nueva who were cited to appear before Judge McFie, charged with contempt were given a hearing today. The parties cited to appear are Santiago Romero, mayordomo, Antonio Jose Romero and Florenzo Garduno. Judge W. H. Pope is attorney for the Territory and A. R. Renehan, Esq., represents the defendants. The Acaquia Nueva is located in the Territory.

Money's Digest of the Mexico Supreme Court Decisions for the month of August is published by the New Mexican Printing Company.



# SANTA FE NEW MEXICAN

THE NEW MEXICAN PRINTING COMPANY, PUBLISHERS

MAX. FROST ..... Editor  
PAUL A. F. WALTER ..... Associate Editor  
CHARLES M. STAUFFER ..... Manager

Entered as Second Class matter at the Santa Fe Postoffice.

The New Mexican is the oldest newspaper in New Mexico. It is sent to every postoffice in the Territory, and has a large and growing circulation among the intelligent and progressive people of the Southwest.

RATES OF SUBSCRIPTION.	
Daily, per week, by carrier.....	25
Daily, per month, by carrier.....	\$1.00
Daily, per month, by mail.....	75
Daily, six months, by mail.....	4.00
Daily, one year, by mail.....	7.50
Daily, three months, by mail.....	2.00
Weekly, per month.....	25
Weekly, per quarter.....	75
Weekly, six months.....	1.00
Weekly, per year.....	2.00



The esteemed Las Vegas Optic is just about correct in an editorial comment recently made in the columns of the paper regarding the proposition of the Capital Light and Power company of this city. Says the Optic: "The project now being explained to business men of Las Vegas by Professor Halapleus and Colonel Bonner has in it much of promise. Cheap power on the Pecos should mean a wonderful growth of industries in Santa Fe and Las Vegas. If, after a careful investigation, the committee appointed by the board of trade find the enterprise a worthy one, no better investment could be made by this city than the comparatively small amount asked in stock subscriptions. The investment, also, should pay in dollars."

From Austin, Texas, comes a dispatch that the Santa Fe Central is making arrangements to build through Texas to Big Springs in that state, there to form a junction with the Texas & Pacific. The New Mexican is in position to know that there is more than idle talk about this proposition and that the Santa Fe Central will be long to extend its line to Big Springs via Roswell. What that will mean to Santa Fe is quite apparent. It will place this town on a main line from Denver to New Orleans and Galveston. Hurrah for the Santa Fe Central! Austin brings good news about another project and that is that work is to be resumed immediately on the Choctaw extension to Tucumcari and from there to Las Vegas. It is understood that in accordance with a recent agreement of the Rock Island and the Santa Fe interests, both lines will run their through trains over this cut-off to California.

Several papers of the Fifth judicial district are still laboring under the impression that an appointment to the Supreme bench of New Mexico is a local appointment. To these the New Mexican would reiterate that the President does not appoint a man to be judge of the Fifth district of New Mexico but to the Supreme bench of New Mexico. The Supreme Court may at its next session designate any one of its members as trial judge of the Fifth judicial district and may assign the new appointee to quite another district. Even under statehood, election to the Supreme bench will not be considered a local matter, as it is not likely that the district judges will compose the Supreme bench as under the Territorial form of government. It is an anomaly any way that the members of the Supreme Court should pass review upon cases which have been decided by one of their number in a lower court.

What are the newspapers and people of Arizona doing to help along statehood? If they do not want to come in joined to New Mexico, what are they doing for themselves? Are they having their newspapers agitate the question, or their citizens write to friends east to help the cause along? If not, why not? New Mexico is keeping up the agitation all the time, before all sorts of conventions, and so is Oklahoma, and these two Territories, particularly New Mexico, have to trail Arizona along too. Why do not citizens of Arizona help themselves and bring up the statehood question before all sorts of conventions and have the question of her desire for statehood written up in the eastern papers as New Mexico has done? It is not fair that New Mexico should have to do more than her share, yet she has done much more than her share of this agitation during the last two years at least.

If it were not for the fact that the correspondent of the Denver Republican at Washington at times lends his ear to interested parties in writing his political dispatches, the New Mexican would take more stock in the story telegraphed by him to Saturday's Republican that Attorney General Knox has recommended Judge Louis Sulzbecher to succeed Judge Daniel H. McMillan on the New Mexico Supreme Court bench. There are several points in the lengthy telegram which stamp it as rather fishy and

one of these is the assertion that Delegate Rodey has not the back bone to endorse any particular New Mexico candidate for the fear of losing friends and is therefore not averse to an outsider receiving the appointment. The New Mexican and every one else in New Mexico knows better, for whatever New Mexico's delegate to Congress may lack he has enough back bone and to spare. In fact, the principal complaint against the delegate has been that he has too much backbone to suit every one at Washington or at home.

## A BIT OF GOSSIP CONCERNING SENATOR QUAY.

There is a bit of political gossip that has found its way across the continent and will prove of interest to the people of New Mexico, even if it has to do with the political affairs of Pennsylvania primarily. The story originates in Pittsburg and concerns the successor of Hon. Matthew Stanley Quay as United States senator. It seems that recently a visit to Mayor William B. Hays was made by Henry W. Oliver, and it is a well known fact that since the day political relations between the Bigelows and the Olivers were dissolved, that the communications between the rival leaders have been few and far between. The visit of Mr. Oliver is regarded of more than passing importance and has given rise to much speculation and comment. The importance that is attached to the visit has been greatly increased in view of the revival of the gossip that Oliver was to be the Republican candidate to succeed Quay in the Senate. Senator Quay is constantly reasserting his intention to resign and it is intimated by some that he is arranging to bring about the election of Oliver in his stead. Oliver is the man whom John I. Mitchell defeated for Senator many years ago.

It is also thought that the present Oliver boom is the basis for the repeated stories of harmony and that the harmonists have hesitated to approach Bigelow on account of the abrupt manner in which the relations between Oliver and Bigelow were severed by Oliver and his brother. The visit of Mr. Oliver is also regarded in the light of particular importance at this time in view of the assertion that is widely made, that the Olivers are to finance the Republican campaign this fall, and in return are to have the support of the members of the legislature from Allegheny County next year if Quay does not become a candidate.

## THE STATEHOOD QUESTION.

It is becoming apparent judging by the tone of editorials in influential Republican newspapers throughout the country that a strong effort will be made during the coming session of congress to pass an enabling act for New Mexico and Arizona as one state, for Oklahoma and the Indian Territory also as one state. It is probable, however, if the people of these territories will vote to accept such acts and come into the union under them. The St. Louis Globe-Democrat in a recent issue editorially comments on the situation as follows:

"According to the Washington correspondent of a Philadelphia paper, the Republicans of Oklahoma prefer to stay out of the union until 1906 to coming into statehood in 1903 or 1904 with the Indian Territory joined to them. One of the objections which is cited is that the land laws of the Indian Territory will be in such shape until that year that the Indian lands cannot be taxed, and therefore the Indian Territory could not contribute its share to the support of a state government and the establishment of a school system. But the principal reason which is assigned for opposition to union with the Indian Territory is that the big state would be overwhelmingly Democratic.

"The latter objection is not quite so strong as it looks on the surface. Oklahoma itself is probably Democratic on a fair vote. All the lead that the Republican candidate for delegate to Congress from Oklahoma received in 1902 was 394, out of a total vote of over 94,000. It was said during the canvass of 1902 that the Democrats would not make a serious attempt to win in Oklahoma, as they believed that a Republican victory in that year would have a good deal of influence in favor of admission with a Republican Congress. The Republican margin was so small, even with many of the Democrats unwilling to see their candidate win, that the Republicans of the Territory ought to grasp the situation.

"So far as the partisan question will enter into the issue of admission in any shape, it will be against the contention of the persons who ask for the admission of Oklahoma as a separate state. The Indian Territory is probably Democratic by 8,000 or 10,000 votes. Oklahoma, as it stands now, is probably Democratic by 4,000 or 5,000. The opening of the new reservations in 1901, which were peopled largely from Texas and Arkansas, has worked a great change in the partisan complexion of the Territory. Admitted as separate states, these two Territories would furnish four Democratic senators. Admitted as one state they would furnish only two Democrats. Whatever this Republican Congress may do or may refuse to do, it is certain that it will not set out deliberately and gratuitously to increase the Democratic vote in either Senate or House. This, however, is only one of the reasons, and not the largest one, why Congress will insist on the union of the Territories as a condition of admission."

## A COMMON ERROR.

The Same Mistake is Made by Many Santa Fe People.

It's common error. To plaster the aching back. To rub with liniments rheumatic joints.

When the trouble comes from the kidneys.

Doan's Kidney Pills cures all kidney ills.

Are endorsed by Santa Fe citizens. Manuel Montoya of Canon st., says: "Eight months ago and for a year and a half previous to that my back ached continually. If there was any time when a change was noticeable it was during wet and rainy spells when possibly the aching increased. Doan's Kidney Pills procured at Ireland's Pharmacy effectually stopped the aching and what to me is considerable more importance and value, during the last eight months there has not been a sign of a recurrence."

For sale by all dealers; price 50 cents a box. Foster-Milburn Co., Buffalo, N. Y., sole agents for the United States.

Remember the name—Doan's—and take no other.

## Santa Fe Central Rail'y.

TIME TABLE  
Effective Thursday, August 20, 1903.

NORTH BOUND		SOUTH BOUND	
Stations	Miles	Stations	Miles
12:00 p.m. Santa Fe	0.0	12:00 p.m. Santa Fe	0.0
12:15 p.m. Albuquerque	1.5	12:15 p.m. Albuquerque	1.5
12:30 p.m. Bernalillo	3.0	12:30 p.m. Bernalillo	3.0
12:45 p.m. Los Alamos	4.5	12:45 p.m. Los Alamos	4.5
1:00 p.m. Santa Fe	6.0	1:00 p.m. Santa Fe	6.0
1:15 p.m. Albuquerque	7.5	1:15 p.m. Albuquerque	7.5
1:30 p.m. Bernalillo	9.0	1:30 p.m. Bernalillo	9.0
1:45 p.m. Los Alamos	10.5	1:45 p.m. Los Alamos	10.5
2:00 p.m. Santa Fe	12.0	2:00 p.m. Santa Fe	12.0
2:15 p.m. Albuquerque	13.5	2:15 p.m. Albuquerque	13.5
2:30 p.m. Bernalillo	15.0	2:30 p.m. Bernalillo	15.0
2:45 p.m. Los Alamos	16.5	2:45 p.m. Los Alamos	16.5
3:00 p.m. Santa Fe	18.0	3:00 p.m. Santa Fe	18.0
3:15 p.m. Albuquerque	19.5	3:15 p.m. Albuquerque	19.5
3:30 p.m. Bernalillo	21.0	3:30 p.m. Bernalillo	21.0
3:45 p.m. Los Alamos	22.5	3:45 p.m. Los Alamos	22.5
4:00 p.m. Santa Fe	24.0	4:00 p.m. Santa Fe	24.0
4:15 p.m. Albuquerque	25.5	4:15 p.m. Albuquerque	25.5
4:30 p.m. Bernalillo	27.0	4:30 p.m. Bernalillo	27.0
4:45 p.m. Los Alamos	28.5	4:45 p.m. Los Alamos	28.5
5:00 p.m. Santa Fe	30.0	5:00 p.m. Santa Fe	30.0

Connecting at Torrance, New Mexico, with the El Paso-Northeastern System for all points North and East, and South and West.

B. W. ROBBINS,  
General Passenger Agent, Santa Fe, N. M.

W. S. HOPEWELL,  
General Manager, Santa Fe, N. M.

## D. & R. G. SYSTEM, Santa Fe Branch.

Time Table No. 71.  
(Effective Wednesday, April 15, 1903.)

East Bound	West Bound
9:00 a.m. Santa Fe	6:20 p.m. Santa Fe
9:15 a.m. Albuquerque	6:35 p.m. Albuquerque
9:30 a.m. Bernalillo	6:50 p.m. Bernalillo
9:45 a.m. Los Alamos	7:05 p.m. Los Alamos
10:00 a.m. Santa Fe	7:20 p.m. Santa Fe
10:15 a.m. Albuquerque	7:35 p.m. Albuquerque
10:30 a.m. Bernalillo	7:50 p.m. Bernalillo
10:45 a.m. Los Alamos	8:05 p.m. Los Alamos
11:00 a.m. Santa Fe	8:20 p.m. Santa Fe
11:15 a.m. Albuquerque	8:35 p.m. Albuquerque
11:30 a.m. Bernalillo	8:50 p.m. Bernalillo
11:45 a.m. Los Alamos	9:05 p.m. Los Alamos
12:00 p.m. Santa Fe	9:20 p.m. Santa Fe

Trains run daily except Sunday.

Connections with the main line and branches as follows:

At Antonio for Durango, Silverton, and all points in the San Juan country.  
At Alamosa (with standard gauge) for La Veta, Pueblo, Colorado Springs and Denver, also with narrow gauge for Monte Vista, Del Norte and Denver Creede and all points in the San Luis valley.

At Salida with main line (standard gauge) for all points east and west including Leadville and narrow gauge points between Salida and Grand Junction.

At Florence and Canon City for the gold camps of Cripple Creek and Victor.  
At Pueblo, Colorado Springs and Denver with all Missouri river lines for all points east.

For further information address the undersigned.

Through passengers from Santa Fe in standard gauge sleepers from Alamosa can have berths reserved on application J. B. DAVIS, Agent.

S. K. HOOPER, G. P. A., Santa Fe, N. M.

Denver, Colo.



## TIME TABLE.

(Effective June 4, 1903.)

No. 720 leaves Santa Fe at 9:40 a. m. to connect with No. 2 east bound, with connection from El Paso and Southern California, returning, arrive at Santa Fe at 11:50 a. m.

No. 722 leaves Santa Fe at 3:30 p. m., to connect with No. 1, west bound, for Southern California, returning arrive at Santa Fe at 5:35 p. m.

No. 724 leaves Santa Fe at 7:10 p. m., to connect with No. 7, westbound for San Francisco and Northern California returning, arrive at Santa Fe at 9:30 p. m.

No. 726 leaves Santa Fe at 9:35 p. m., to connect with No. 8, east bound, from San Francisco and Northern California, returning, arrive at Santa Fe at 11:45 p. m.

THE CALIFORNIA LIMITED.

Now twice a week between Chicago, Los Angeles and San Francisco. This train leaves Lamy, westbound, at 8:40 a. m., Monday and Thursday. East-bound, at 2:02 a. m., Wednesday and Saturday. No connection with these trains from Santa Fe, except that passengers arriving on No. 3, west bound, can reach Santa Fe at 11:50 a. m. on No. 2's connection.

All of above trains run through solid from Chicago to California and carry through Pullman and tourist sleepers except California Limited, which carries Standard Sleepers only.

Through sleeping car reservation arranged for on application.

City Ticket Office:

CATRON BLOCK EAST SIDE PLAZA

H. S. LUTZ, AGENT.

# THE OXFORD CLUB

J. E. LACOME, Prop.

The Most Popular Place of Entertainment in City of Santa Fe.

Everything Up-to-Date. The Finest Brands of Wines and Liquors. The Best Imported and Domestic Oigars. Luxurious Club Rooms. A Cordial Invitation and Courteous Treatment Extended to Everybody. Drop in and See for Yourself.

San Francisco Street, Santa Fe, N. M.

## A. F. SPIEGELBERG

226 San Francisco St., South Side of Plaza.

# Indian and Mexican Wares and Curios

Blankets, Baskets, Pottery, Rag, Wax, Feather and Linen  
Drawn Work. Opals, Turquoises, Garnets  
and Other Gems.

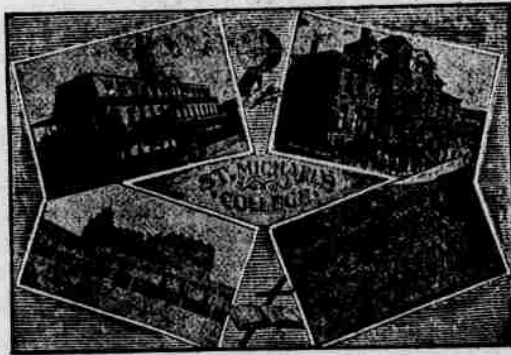
SPECIALTY  
To have the best of everything in the line.

# B. HANLEY

San Francisco Street, Santa Fe, New Mexico.  
DEALER IN  
W. H. McBRAYER, OLD CROW and  
OLD OSCAR PEPPER KENTUCKY WHISKIES.  
OVERHOLT and OUCKENHEIMER PENN RYE WHISKY.  
IRISH and SCOTCH WHISKIES  
AND DISTILLERY BOTTLED WHISKY.  
FRENCH COGNAC and HOLLAND GIN.  
CALIFORNIA WINES and BRANDY.  
GUINNESS'S PORTER AND BASS'S ALE.

# ST. MICHAEL'S COLLEGE.

Santa Fe, New Mexico.



THE 45TH YEAR BEGINS SEP. 1, 1903.

The College is empowered by law to issue FIRST-CLASS TEACHERS' CERTIFICATES to its graduates, which Certificates are to be honored by School Directors in the Territory of New Mexico.

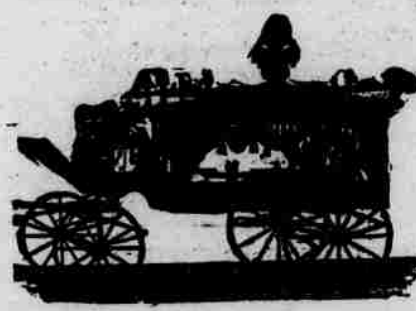
BRO. BOTULPH, President.

## A. P. HOGLE

# Undertaker and Funeral Director

GALISTEO STREET

Best of Reference Given as an EMBALMER. Night Calls  
RESIDENCE PHONE 141.



"Manitou" Sarsaparilla  
"Manitou" Mineral Water  
"Manitou" Ginger Champagne....

# Pure Crystal Ice

Delivered Free to All Parts of the City.

Satisfaction Guaranteed

GRANT RIVENBURG, Proprietor.

# LEO HERSCH...

WHOLESALE  
and  
RETAIL  
DEALER IN

FLOUR, RAY,  
GRAIN, POTATOES,  
SALT and SEEDS.

Only Exclusive Grain House in City

## PROFESSIONAL CARDS

### Attorneys at Law.

MAX. FROST,  
Attorney at Law, Santa Fe, N. M.  
GEO. W. KNAEBEL,  
Office in Griffin Block. Collections and searching titles a specialty.  
EDWARD L. BARTLETT,  
Lawyer, Santa Fe, New Mexico. Office in the Capitol.  
EUGENE A. FISKE,  
Attorney and Counselor at Law,  
Santa Fe, N. M.  
Supreme and District Court Practice.  
BENJAMIN M. READ,  
Attorney-at-Law,  
Santa Fe, N. M.  
Office Sena Block, Palace Ave.

WILLIAM MCKEAN,  
Attorney-at-Law.  
Practice in all the Courts, Taos, N. M.

W. J. McPHERSON,  
Attorney at law. Practices in all the courts in the territory. Santa Fe, New Mexico.

WILLIAM H. LLEWELLYN,  
Attorney-at-Law,  
Las Cruces, New Mexico.  
District attorney for Dona Ana, Otero, Grant, Luna and Sierra Counties, Third Judicial District.

CHAS. F. EASLEY,  
(Late Surveyor General.)  
Attorney at law, Santa Fe, N. M. Land and mining business a specialty.

E. C. ABBOTT,  
Attorney-at-Law.  
Practices in the district and supreme courts. Prompt and careful attention given to all business.  
District attorney for the counties of Santa Fe, Rio Arriba, Taos and San Juan. Santa Fe, N. M.

EDWARD C. WADE,  
Attorney-at-Law.  
Practices in all the courts.  
"Mining cases and mineral patents a specialty."  
LAS CRUCES - - NEW MEXICO.

FRANK W. CLANCY,  
Attorney-at-Law.  
(District Attorney 2d Judicial District.)  
Practices in the District Courts and the Supreme Court of the Territory, also before the United States Supreme Court in Washington.  
ALBUQUERQUE - - NEW MEXICO.

A. B. RENEHAN,  
Attorney-at-Law.  
Practices in the Supreme and District Court. Mining and Land Law a specialty. Rooms 8 and 9, Sena Building, Palace Avenue, Santa Fe, N. M.

## OSTEOPATHY

DR. CHARLES A. WHEELON,  
Osteopath.  
No. 103 Palace Avenue.  
Successfully treats acute and chronic diseases without drugs or medicines.  
No Charge for Consultation.  
Hours: 9-12 m., 2-5 p. m.

## DENTISTS

DR. C. N. LORD,  
Office, Kahn Block, over Spitz's Jewelry Store. South Side of Plaza.

C. O. HARRISON, D. D. S.,  
Office: Over Fischer's Drug Store.  
On the Plaza.  
(Successor to Dr. Manley.)

## Civil Engineers & Surveyors

DAVID M. WHITE,  
Civil Engineer.  
Designs and specifications for iron and stone bridges. Railroad, water works and irrigation engineering.  
Office: Governor's Palace, Santa Fe, New Mexico.

JAY TURLEY,  
Civil Engineer and Surveyor. Irrigation Work a Specialty. U. S. Deputy Mineral Surveyor. Santa Fe, N. M.

## Notary Public, Stenographer and Type

From Spanish into English and from English into Spanish carefully made. Office with U. S. Attorney for the Court of Private Land Claims, Federal Building. FRANCISCO DELEADO,  
Santa Fe, N. M.

## Notice for Publication.

(Homestead Entry No. 5,027)  
DEPARTMENT OF THE INTERIOR,  
Land Office at Santa Fe, N. M., Aug. 20, 1903  
-Notice is hereby given that the following named settler has filed notice of his intention to make final proof in support of his claim, and that said proof will be made before the register or receiver at Santa Fe, N. M., on September 28, 1903, viz: Cayetano Chavez for the sw 1/4, ne 1/4, se 1/4, nw 1/4, e 1/2, section 7, township 9 north, range 11 east. He names the following witnesses to prove his continuous residence upon and cultivation of said land, viz: Jose Ortiz, Antonio Sandoval, Anastacio Chavez, Bernardino Chavez, all of Galisteo, N. M.  
MANUEL E. ORTIZ, Register.

It is an admitted fact that real estate, financial men and merchants all say that quickest and best results are obtained by advertising in the "New Mexican."

Our facilities are complete  
For the prompt production of  
Book, Pamphlet, Catalogue,  
and General Printing and  
Binding. We do only the Best grades of work and solicit the business of firms and individuals desiring something above the ordinary at simply a consistent rate for the character of work we turn out. All orders promptly attended to, and estimates furnished on application  
NEW MEXICAN PRINTING CO.



## NEW MEXICO ILLUSTRATED.



A Mining Camp in Grant County

1903 August 1903

Sun	Mon	Tues	Wed	Thur	Fri	Sat
1	2	3	4	5	6	7
8	9	10	11	12	13	14
15	16	17	18	19	20	21
22	23	24	25	26	27	28
29	30	31				

## SOCIETIES

## Masonic.



**MONTEZUMA LODGE**  
No. 1, A. F. and A. M.—Regular communication first Monday in each month at Masonic Hall at 7:30 p. m.

C. F. EASLEY, W. M.  
F. P. CRICHTON, Secretary.



**SANTA FE CHAPTER, No. 1, R. A. M.**—Regular communication second Monday in each month at Masonic Hall at 7:30 p. m.

MARCUS ELDODT, H. L.  
ARTHUR SELIGMAN, Secretary.



**SANTA FE COMMANDERY**  
No. 1, K. T.—Regular communication fourth Monday in each month at Masonic Hall at 7:30 p. m.

F. S. DAVIS, E. C.  
W. E. GRIFFIN, Recorder.

## I. O. O. F.

**SANTA FE LODGE No. 2, I. O. O. F.** meets every Friday evening in Odd Fellows' hall, San Francisco street. Visiting brothers welcome.

GEO. W. KNAEBEL, N. G.  
A. P. HOGUE, Secretary.

**CENTENNIAL ENCAMPMENT, No. 1, I. O. O. F.**—Regular communication the second and fourth Tuesday of each month at Odd Fellows' hall. Visiting patriarchs welcome.

JOHN SEARS, Scribe.

**MYRTLE REBEKAH LODGE, No. 1, I. O. O. F.**—Regular meeting first and third Tuesday of each month at Odd Fellows' hall. Visiting brothers and sisters welcome.

SALLIE VANARSDALE, N. G.  
LAURA DAVIS, Secretary.

## A. O. U. W.

**GOLDEN LODGE, No. 1, A. O. U. W.** meets every second and fourth Wednesday at 8 p. m.

C. C. PIERCE, Master Workman.  
JOHN C. SEARS, Recorder.

## K. O. F. P.

**SANTA FE LODGE, No. 2, K. O. F. P.** Regular meeting every Tuesday evening at 7:30 o'clock at Castle hall. Visiting knights given a cordial welcome.

J. S. CANDELARIO, C. C.  
J. K. STAUFFER, K. R. S.

## S. P. O. E. L. S.

**SANTA FE LODGE, No. 1, S. P. O. E. L. S.** holds its regular sessions on the second and fourth Wednesdays of each month. Visiting brothers are invited and welcome.

J. B. DAVIS, E. R.  
A. J. FISCHER, Secretary.

## MONEY'S DIGEST.

The New Mexican Printing Company has made arrangements with the publisher of Money's Digest of the New Mexico reports to sell same at the reduced price of \$0.50 delivered in any part of the territory. This price will hold good only for a limited time in order to reduce the stock so as to pay for the publishing of this book. This price is subject to withdrawal without notice, cash to accompany each order.

Loose leaf ledgers of the finest quality and made up under the latest and best patents are a specialty at the New Mexican bindery. If you need any books for the coming year, give your order now and you will be furnished with first class books at very reasonable prices.

## MONEY TO LOAN!

At the Next Regular Meeting

The

MUTUAL BUILDING &amp; LOAN

ASSOCIATION

Of Santa Fe

Will Receive

BIDS FOR LOANS

H. N. WILLCOX,

Secretary.

Office: Catron Block, Up Stairs

Santa Fe Filigree

and

Jewelry Mfg. Co.

GOLD and

SILVER FILIGREE.

N. MONDRAGON, Mgr.

S. E. Corner Plaza, San Francisco St.

## TERRITORIAL PICKINGS

## GRANT COUNTY.

Jose Pallen and Miss Pas Terango were married at the Catholic church at Lordsburg last week.

A horse and mule were killed by lightning at Silver City last Thursday. The animals belonged to Henry Rosenkrantz.

A successful dash for liberty was made from the Silver City jail last Wednesday afternoon by Thomas Bush, aged 18 years, who was held on the charge of horse stealing.

Louis Ginn, a Chinaman, was arrested at Silver City on the charge of being unlawfully in this country. United States Commissioner Newcomb ordered him deported to China.

There is a promise of a considerably increased attendance at the New Mexico Normal school at Silver City when it opens next Tuesday. A very interesting lecture course has been arranged for this year.

A. B. Laird has put on exhibition at the Enterprise office at Silver City the prehistoric Indian skull and corn crusher which he unearthed together with a lot of Aztec pottery near Fort Bayard some time ago.

Eugene Warren, son of Mrs. O. S. Warren, has returned to Silver City from the Philippines to which he had gone with fifteen other students on a sight-seeing trip. He was absent two months.

A washout on the Arizona & New Mexico railroad near Lordsburg was not discovered on Saturday night until a freight train ran into it and was derailed. No one was injured but it took all day to get the road into such shape that trains could run over it again.

Two pleasant social events took place at Silver City last week. Mrs. T. F. Farnsworth and sister, Miss Fay Waters, gave a musicale on last Wednesday evening. Mrs. William Laizure assisted by Mrs. G. W. Turner and Mrs. Lorenz entertained Friday afternoon in celebration of the fourteenth birthday anniversary of her daughter, Miss Lillian.

The Silver City Enterprise has it that it is John D. Rockefeller who is behind the Colorado & Gulf railroad project which is to connect Durango, Colo., with Clifton, Ariz., by way of Farmington and Gallup. This is quite likely as the Rockefeller interests have lately bought out the Colorado Fuel and Iron company and the coal lands in western Socorro and Valencia Counties are great attractions to them.

## SOCORRO COUNTY.

Scarlet fever is epidemic among the children of Midway near San Marcial. At San Antonio this week Miss Anna Maria Apodaca and V. C. Pino are to be married.

Missouri buyers last week shipped several carloads of horses from San Marcial which they had driven in from Magdalena.

John McIntyre has awarded the contract for the erection of a store building at San Antonio to Contractor J. A. Harlan of San Marcial.

Gregorio Baca, a former county commissioner of Socorro County, died at Socorro last week. He was aged 70 years. Interment was made at Escondido.

W. O. Morgan, the railroad section boss at Socorro, was struck across the face by a tie which some one threw from a flat car. His nose was badly broken.

Mayor Cooney is endeavoring to have a high walk built from the Avenue House to the Santa Fe depot at Socorro. The mayor is also nego-

tiating with the Santa Fe railway to induce the company to build a dam and canal at the mouth of the canon to divert the flood waters into the old arroyo in which they ran years ago. The company has agreed to do this, the city deeding to it a strip of land a quarter of a mile wide extending from the slaughter house to the river.

Henry May of Socorro, has given the contract to carry the mail between Socorro and Magdalena until the railroad tracks between those two towns are repaired.

The board of education at San Marcial has elected Mrs. L. L. Brown of Las Cruces as principal of the San Marcial public schools and Miss Rose Schmidt as her assistant.

## SUICIDE PREVENTED.

The startling announcement that a preventive of suicide had been discovered will interest many. A run down system, or dependency invariably precedes suicide and something has been found that will prevent that condition which makes suicide likely. At the first thought of self destruction take Electric Bitters. It being a great tonic and nerve will strengthen the nerves and build up the system. It's also a great stomach, liver and kidney regulator. Only 50c. Satisfaction guaranteed by Fischer Drug Co.

## LOW RATES

From June 5 to October 15 the Denver and Rio Grande Railroad will sell summer excursion tickets to points named at the following low rates: Santa Fe to Pueblo and return \$17.55; Santa Fe to Colorado Springs and return \$19.55; Santa Fe to Denver and return \$22.55; Santa Fe to Glenwood Springs and return (via Salida and Leadville) \$28.65. Final return limit Oct. 31st, 1903. At all points except Glenwood Springs a fee of 25 cents is charged when tickets are exchanged for return passage. Stopovers allowed north of Pueblo and stopovers allowed west and south of Pueblo either direction, for parties desiring to make the following side trips at one fare for the round trip, viz: From Salida to points between Gunnison and Cimarron; from Alamosa to points on Creede Branch; from Antonito to Pagosa Springs. For any further information, sleeping car reservations etc. call on or address J. B. DAVIS, Agent.

## PUTS AN END TO IT ALL.

A grievous wall oftentimes comes as a result of unbearable pain from overtaxed organs. Dizziness, headache, liver complaint and constipation. But thanks to Dr. King's New Life Pills they put an end to it all. They are gentle but thorough. Try them. Only 25c. Guaranteed by Fischer Drug Co.

## D. &amp; R. G. CHANGE OF TIME.

Until further notice the Denver & Rio Grande train arriving here in the evening will be run as an extra from Espanola to Santa Fe, arriving at Santa Fe about 5 p. m.

J. B. DAVIS, Agent.

## HERBINE

Renders the bile more fluid and thus helps the blood to flow; it affords prompt relief from biliousness, indigestion, sick and nervous headaches, and the over-indulgence in food and drink. Herbine acts quickly, a dose after meals will bring the patient into a good condition in a few days.

G. L. Caldwell, Agt. M. K. and T. R. R., Checotah, Ind. Ter., writes, April 18, 1903: "I was sick for over two years with enlargement of the liver and spleen. The doctors did me no good, and I had given up all hope of being cured, when my druggist advised me to use Herbine. It has made me sound and well." Fifty cents at Fischer Drug Co.

Try a New Mexican want "ad."

The New Mexican Printing Company has the best bookbinding in the southwest and the only modern bindery in New Mexico. It turns out superior blank-books, cash-books, journals and ledgers, and also loose-leaf ledgers and blank-books of all descriptions. The work done by it is first-class and at very low rates. Bankers and merchants in New Mexico should not send their book binding work out of the territory, but should patronize this very deserving home manufacturing institution.

The New Mexican is sending about 50 copies each week to parties desiring information about Santa Fe. This is done for the public good, and free of charge, although it is quite expensive.

Loose leaf ledgers at the New Mexican Bindery.

## Legal Blanks

In Stock and for Sale by

THE NEW MEXICAN PRINTING COMPANY.

## MINING BLANKS.

Amended Location Notice, 1-2 sheet.  
Agreement of Publisher, 1-4 sheet.  
Proof of Labor, 1-4 sheet.  
Lode Mining Location, 1-2 sheet.  
Placer Mining Location, 1-2 sheet.  
Title Bond to Mining Property, 1-2 sheet.

Title Bond and Lease of Mining Property, 1-2 sheet.  
Mining Deed, 1-2 sheet.  
Mining Lease, 1-2 sheet.  
Coal Declaratory Statement, 1-2 sheet.  
Coal Declaratory Statement and Power of Attorney and Non-Mineral Affidavit, 1-2 sheet.  
Notice of Right to Water, 1-4 sheet.  
Forfeiture, or Publishing Out Notice, 1-4 sheet.

## STOCK BLANKS.

Bill of Sale, Animals Bearing Vendor's Recorded Brand, 1-4 sheet.  
(In books 25 blanks, 40c. per book.)  
Bill of Sale, Animals Not Bearing Vendor's Recorded Brand, 1-4 sheet.  
Bill of Sale, Range Delivery, 1-4 sheet.  
Authority to Gather, Drive and Handle Animals Bearing Owner's Recorded Brand, 1-2 sheet.  
Authority to Gather, Drive and Handle Animals Not Bearing Owner's Recorded Brand, 1-2 sheet.  
Certificate of Brand, 1-2 sheet.

The New Mexican Printing Company employs superior workmen in its several departments. Consequently it turns out superior work and should receive the patronage of those desiring "something above the ordinary," at simply a consistent rate for the character of the work turned out.



## END OF BITTER FIGHT.

"Two physicians had a long and stubborn fight with an abscess on my right lung," writes J. F. Hughes of Du Pont, Ga., "and gave me up. Every body thought my time had come. As a last resort, I tried Dr. King's New Discovery for Consumption. The benefit I received was striking and I was on my feet in a few days. Now I've entirely regained my health." It conquers all coughs, colds and throat and lung troubles. Guaranteed by Fischer Drug Co. Price 50c and \$1. Trial bottles free.

"The Grand Canon of Arizona," a superbly illustrated volume of 124 pages. Fifty cents a copy. Apply to H. S. Lutz, city agent of the Atchison, Topeka and Santa Fe Railway in the Catron Block.

## RHEUMATISM.

When pains or irritation exist on any part of the body, the application of Ballard's Snow Liniment gives prompt relief. E. W. Sullivan, Prop. Sullivan House, El Reno, O. T., writes, June 6, 1902: "I take pleasure in recommending Ballard's Snow Liniment to all who are afflicted with rheumatism. It is the only remedy I have found that gives immediate relief." 25c, 50c, \$1.00 at Fischer Drug Co.

## LAND SCRIPT.

By the use of so-called land script, title can be obtained to government land without cultivation or residence thereon. All you need to do is to give description and show the land to be of the proper kind; we do the rest. By reason of the exhaustion of the supply which has been quite limited the price is advancing. We have a small amount yet on hand to sell, that is fully guaranteed. We also deal in real estate, loans and investments.

HUGO SEABERG.

Springer, N. M.

New Mexican want and miscellaneous ads always bring good results.

## Maxwell Grant.

FARMING LANDS UNDER IRRIGATION SYSTEM.

These farming lands with perpetual water rights are now being offered for sale in tracts of forty acres and upwards. Price of land with perpetual water rights from \$17 to \$25 per acre, according to location. Payments may be made in ten year installments. Alfalfa, grains, fruits of all kinds, and sugar beets grow to perfection.

## GOLD MINES.

On this Grant, about forty miles west of Springer, N. M., are the gold mining districts of Elizabethtown and Baldy, where important mineral discoveries have lately been made. Claims on unlocated ground may be made under the mining regulations of the company, which are as favorable to the prospector as the U. S. government laws.

Near Raton, N. M., on this grant, are located the Coal Mines of the Raton Coal and Coke Company, where employment may be found at good wages for any wishing to work during the seasons that farming or prospecting can not be successfully done.

For particulars and advertising matter apply to

THE MAXWELL LAND GRANT CO

RATON, NEW MEXICO

R. J. PALEN, President.

J. H. VAUGHN, Cashier.

HENRY L. WALDO, Vice President.

## THE FIRST NATIONAL BANK

SANTA FE, NEW MEXICO

United States Designated Depository.

HENRY KRICK SOLE AGENT FOR

Lemp's St. Louis Beer.

ALL KINDS OF MINERAL WATERS BY MAIL ORDERS PROMPTLY FILLED

The Trade Supplied From One Bottle to a Carload.

Guadalupe Street, Santa Fe, N. M. Phone No. 38.

MINIMUM OF EXERTION

THEY GO TOGETHER IN A

Remington Typewriter

MAXIMUM OF EXECUTION

The Remington Typewriter lasts longest. So does the Remington Operator. Wickoff, Seamans & Benedict. 327 Broadway, New York.

NEW MEXICAN PRINTING COMPANY, Dealers, Santa Fe, N. M.



## SALMON & ABOUSELMAN

WHOLESALE AND RETAIL DEALERS IN

### Dry-Goods AND Notions

WE are the acknowledged headquarters for House Furnishing Goods, including Carpets of all grades and Rugs of every description.

The largest line of Linoleums, among which will be found the celebrated special inlaid Potter grade. We guarantee buyers to compete with Eastern houses.

Our Tailor-Made suits for ladies and gentlemen speak for themselves. Fit and workmanship guaranteed. Give us a trial on your next suit and be pleased.

We have made a slash of fifteen per cent on every thing in our Wash Dress Goods Department.

REMEMBER—Give us a call on carpets, especially fine shades and figures for fall trade.

We will be pleased to "show you."

PHONE 108. SAN FRANCISCO STREET. P. O. BOX 255.

### OFFICIAL MATTERS.

#### Notaries Appointed.

The following have been appointed notaries public: Joshua X. Dunn of Roswell, Chaves County, and Arthur H. Harlee of Silver City, Grant County.

#### Examiners Named.

Judge John R. McFie sitting in the place and stead of the judge of the Fifth district appointed J. F. Stillwell and Mrs. J. M. Peacock members of the board of examinations for teachers of Chaves County.

#### Incorporation Papers Filed.

The following incorporation papers were filed today in the office of the secretary of the Territory: The Albuquerque Traction company, principal office in the city of Albuquerque, the capital stock of the company consists of 25,000 shares of the par value of \$10 each making a total of \$250,000. The company has for its object the construction, operation and maintenance of an electric railroad in the city of Albuquerque, as well as to furnish electric power for manufacturing purposes. The term of existence of the company is fixed at fifty years. The incorporators are W. H. Greer of Deming, Thomas N. Wilkerson, B. S. Baker, Thomas S. Hubbell and M. W. Flournoy all of Albuquerque.

#### SUNDAY DINNERS

Now being served at the Bon-Ton have become quite popular, and are proving good drawing cards. Everything served that the market affords.

### PERSONAL MENTION

A. G. Muller, a Taos merchant, is looking after business matters in the capital.

Marcos Lucero, a citizen of Pecos, is in the city looking after some business affairs.

R. J. Phillips left this morning for a visit to friends and relatives in Lincoln, Iowa.

M. K. Kehler of La Jara, Colo., a life-long friend of Charles Wagner, is in town on business.

R. M. Carley of Golden, is visiting the capital today attending as a witness in a court matter.

C. L. Pollard of the large mercantile firm of C. L. Pollard & Co. at Espanola, is in town today.

Julius Staab, who spent several days here a guest at the Staab residence, has returned to his home at Albuquerque.

Mrs. E. C. Wade and children of Las Cruces have returned from a two-months' visit to Mrs. Wade's old home in Washington.

Superintendent Whittenberger, of the fourth division of the Denver & Rio Grande with headquarters at Alamosa, is in the city.

Miss Fannie McNulty, who has been attending the sessions of the Santa Fe County Teachers' Institute, has returned to her home in Turquesa.

M. R. Otero, register of the United States land office will return from Albuquerque tomorrow. He has been in the Duke City on official business.

Berardo Frayre, the well-known prospector, who is seriously ill at the residence of Francisco Ortiz y Rodriguez, is reported as slightly better today.

Superintendent of Forest Reserves I. B. Hanna and family, who have been on the Upper Pecos for the past six weeks, returned to Santa Fe yesterday.

Carlos Dominguez, who has been one of the employees at the penitentiary for many years was taken seriously ill yesterday while on duty. He is reported slightly better today.

Capt. W. C. Reid of Roswell has returned from Chicago to that town and it is understood has withdrawn from the race for appointment as associate justice of the Territorial Supreme court.

Ernest Myers of Albuquerque, liquor and tobacco merchant, was looking after business matters here yesterday. He had just returned from a trip over the Santa Fe Central and speaks in high terms of the fine roadbed of the line.

W. S. Sharpe of Eldorado, Kan., writes David M. White, civil engineer, that he has nearly recovered from the effects of a recent attack of pneumonia and expects to be in Santa Fe within a few days to commence active work on his bridge contract here.

W. S. Burke, the veteran editor of the Albuquerque Journal-Democrat arrived at noon today to enjoy the cold breeze and glorious climate of the Capital City and incidentally to take a rest for a few days. Mrs. Burke preceded him and likes it here very much.

L. D. Sugar of Golden, is in town today and shows some beautiful gold quartz specimens running very high in value. These specimens are taken from the mineral property owned by Mr. Sugar in the San Pedro Mining district in the southern part of this county.

Mrs. T. C. Lebo, wife of Colonel Lebo of the Fourteenth cavalry, left Albuquerque yesterday for San Francisco where she will join her husband and go with him to the Philippine Islands. The regiment commanded by Colonel Lebo is to leave San Francisco Monday next.

Lieut. Charles G. Oden of the Tenth United States cavalry, stationed at Whipple barracks, Prescott, Ariz., is in the city today en route east. He called upon Judge A. L. Morrison with whom he became acquainted during

### BABY'S FUTURE

Something for Mothers to Think About

Lives of Suffering and Sorrow Averted

And Happiness and Prosperity Assured by

Cuticura Soap, Ointment and Pills When All Else Fails.

Every child born into the world with an inherited or early developed tendency to distressing, disfiguring humors of the skin, scalp and blood, becomes an object of the most tender solicitude, not only because of its suffering, but because of the dreadful fear that the disfigurement is to be lifelong and mar its future happiness and prosperity. Hence, it becomes the duty of mothers of such afflicted children to acquaint themselves with the best, the purest and most effective treatment available, viz., The Cuticura Treatment.

Warm baths with Cuticura Soap, to cleanse the skin and scalp of crusts and scales, gentle applications of Cuticura Ointment, to allay itching, irritation and inflammation, and soothe and heal, and mild doses of Cuticura Resolvent, to cool the blood in the severer cases, are all that can be desired for the speedy relief and permanent cure of skin troubles of infants and children, and the comfort of worn-out parents.

Millions of women use Cuticura Soap, assisted by Cuticura Ointment, for preserving, purifying and beautifying the skin, scalp, hair and hands, for annoying irritations and weaknesses, and for many sanative, antiseptic purposes which readily suggest themselves.

Sold throughout the world. Cuticura Resolvent, 50¢ (in form of Chocolate Coated Pills, 42¢ per box of 60). Ointment, 25¢; Soap, 25¢. Denver: London, 27 Chestnut Street, Paris, 2 Rue de la Paix; Boston, 137 Columbus Ave. Potter Drug & Chem. Corp., Proprietors. Send for "How to Cure Baby Humors."

the latter's visit in Prescott. He will remain in town a day or two.

Lyman Maxwell, farmer at the Co-chiti pueblo, is in the city on temporary duty as disciplinarian at the United States Industrial Indian school here. He expects to remain at the school about two weeks longer.

Mr. and Mrs. Robert E. Morrison of Prescott, Ariz., were passengers Sunday for Chicago where they will remain a few days going thence to New York and Boston, where Mr. Morrison has important legal and mining business to attend. Mr. Morrison is a son of Judge A. L. Morrison of this city and is as well and favorably known in New Mexico as he is in Arizona.

Joseph Dilts is on a business trip to Las Vegas.

Miss Alice Kahn will leave for Los Angeles within the next week.

Mrs. L. B. Prince and sister, Mrs. Robert Gilchrist are at the Prince ranch at Espanola.

Mr. Betts will go from here to Las Vegas Hot Springs where he will remain several days.

W. W. Betts, traveling passenger agent of the Chicago & Alton with headquarters at Denver, is in the city.

John B. Harper, superintendent of irrigation for the Pueblo Indians in New Mexico, left this morning for Las Vegas.

Mrs. George Kinsell and children left this morning for Hutchinson, Kan., to attend the funeral of Mrs. Kinsell's mother, Mrs. Conden.

Mrs. S. Spitz and daughter, Miss May Spitz, will leave tomorrow for Denver. Miss Spitz will later go to Wellesley where she will enter college.

W. H. Kennedy and Dr. C. O. Harrison have returned from Cerrillos where they attended the funeral of the late Allen Young which was held at that place yesterday.

Carrol Dwier, James W. Chavez, Ralph Easley and Frank Crandall of this city will leave this week for Roswell where they are cadets at the New Mexico Military Institute.

H. B. Holt, Esq., arrived from Las Cruces on this noon's train and secured an order in a foreclosure and mortgage case from Judge Frank W. Parker and in which case Mr. Holt is attorney for the plaintiffs. He returned to his southern home this evening.

Flavoring extracts and spices are apt to be coarse or weak; Schilling's Best are as fine and strong as nature affords.

At your grocer's; moneyback.

#### MEXICAN CALIENTES

Posole, Menudo, Temole, Frijoles, Chile Verde, Hot Tamales and Chile Con Carne, can only be found by calling at the Bon-Ton. The headquarters for Mexican dishes.

## IMPOSSIBLE!

—and then they'd have laughed—

That's just what people would have said and done a few years ago if you had told them

That we are going to give away Five Dozen Corsets ABSOLUTELY FREE.

And people to-day will exclaim, IMPOSSIBLE! when we say that we have a plan whereby we can give them SOMETHING FOR NOTHING.

But that's just what we CAN do and what we ARE GOING TO DO.

To every lady who will bring to our Corset Department a purchaser for one F. C. or American Beauty Corset at the regular retail price of \$1.00 we will present the corset of the same make in any style or color absolutely FREE OF CHARGE.

This is a bona fide offer, made to introduce these goods, and will positively not be repeated.

SALE COMMENCES AUGUST 31ST, 1903, AT 10 A. M.,

And the offer will be withdrawn when the quantity named above has been given away.

## SELIGMAN BROS. CO., Wholesale and Retail Dry Goods,

P. O. Box 434. SANTA FE, N. M. Phone No. 36.

F. S. DAVIS, President. S. G. CARTWRIGHT, Sec'y and Treas.

## CARTWRIGHT-DAVIS CO.,

Telephone No. 4. No. 250 San Francisco Street.

**BUTCHERS BAKERS .. GROCERS ..**

MEAT MARKET. PHONE 49.

During this hot weather it is more important than ever, if possible, that you should look well to your meat supply. We handle nothing but the best that we can get, and at reasonable prices. If you really care for fancy meat you should give our market a trial.

NEW GOODS.		CHASE & SANBORN.	
Asparagus Tips.....	30	We have for many years sold Chase & Sanborn's famous Boston Coffee. We are now selling more of them than we ever have in the past. This we think a strong recommendation for them.	
Dunbar's Shrimps.....	25	Seal Brand, in cans.....	40
Saratoga chip potatoes.....	25	1 pound packages, C. & S. Coffee.....	25 30 and 35
Keystone Butter.....	25	3 pound cans C. & S. Coffee.....	1.00
Keystone Butter is Colorado made butter and packed in sealed cartons. Guaranteed pure separator creamery.		<b>FRESH VEGETABLES.</b>	
Corned Codfish.....	15	Fresh vegetables are somewhat scarce just now, but we aim to have all there is to be had. Cucumbers, radishes, onions, cabbage, squash, New Jersey sweet potatoes, green chile, tomatoes, green corn, etc.	
PERDELL TEA.		<b>WATERMELONS.</b>	
We have lately added Ferndell mixed tea to our stock. It is a pleasing blend of several different sorts of tea, and is especially desirable for those who use iced tea. One-half lead packages.....		Our plan of receiving express shipments of watermelons almost daily has proved very popular. Unless melons are fresh they are not desirable. Express shipments insure freshness.	
		<b>FRESH FRUIT.</b>	
We are now receiving, Free Stone Peaches, California and Mission Grapes, California Plums, Bananas, Oranges, Apples, Strawberries, Blackberries, etc.		A PLEASING ARRAY.	



50 pound sack Boss Patent flour \$1.25. 50 pound sack Crystal Patent flour, \$1.15.

## H. S. KAUNE & CO.

### REMINGTON TYPEWRITERS

NEW MEXICAN PRINTING CO., Dealers.

Santa Fe . . . . . New Mexico



## The Old Curio Store

J. S. CANDELARIO, Prop.

301 and 303 San Francisco Street.

Wholesale and Retail Dealers in

### Mexican and Indian Curios

The best place to buy Navajo Blankets, Indian and Mexican Pottery, Relics from the Cliff Dwellings, Indian Baskets, in fact all sorts of Curios of Indian and Mexican make can be found at Our Store.

P. O. BOX 340 : : : : : SANTA FE, N. M.

## Santa Fe Central Railway

EL PASO,  
CHICAGO,  
DENVER,  
SALT LAKE CITY.

### DENVER & RIO GRANDE AND ROCK ISLAND SYSTEMS

PASSENGER SERVICE—Through and Local on Schedule Time. Close Connection with the Denver & Rio Grande for Denver, Pueblo, Salt Lake City and all points reached by that line.

FREIGHT TRAFFIC—Will commence on August 25th, when freight of all kinds will be handled for all points via the Rock Island and Denver & Rio Grande Systems.

For best service route your shipments from the East via Santa Fe Central.

PROMPT SERVICE • NEW EQUIPMENT

B. W. ROBBINS, G. F. & P. A., SANTA FE, N. M.

## W. A. MCKENZIE HARDWARE

THE GREAT MAJESTIC



THE GREAT MAJESTIC

Screen Doors and Window Screens, Screen Wire All Sizes, Ice Chests, Refrigerators, Ice Cream Freezers and Winter to Sell Them.

TINNING & PLUMBING



## J. P. VICTORY

Attorney at Law and  
Real Estate Agent

112 San Francisco Street, Santa Fe, N. M.  
Money to loan upon real estate security on easy terms.

Something choice: First class properties on San Francisco street paying more than 8 per cent net on rentals.

Have upon my books excellent fruit ranches in the Espanola valley, large and small ones, plenty of water.

Furnished rooms on Palace avenue.

I have a nice cottage (double) six rooms on one side, 4 on the other; owner occupies 4 rooms and the rest rent for \$25 a month; good neighborhood; ample space to erect other buildings on same street; stables and other outbuildings; the price asked is very low.

Can sell at a bargain a cosy home on Manhattan avenue, an adobe brick house, 7 rooms; fruit and vegetable garden; city water, hydrant and tank; 70 choice fruit trees; currant and raspberry bushes; lot 80 by 265 feet.

I can show you a tract of land west of town, 40 acres, with two adobe houses, one with 4 rooms, the other 2; 15 acres in alfalfa; 800 fruit bearing trees; 2 wells; alfalfa sold for \$300 last season; very cheap.

I also have a fruit ranch in a high state of cultivation, in the suburbs, with a building site overlooking the entire city of Santa Fe. On it there is an artificial reservoir, the only one of its kind in the city, 12 feet or more in depth, holding over 125,000 gallons of water, constantly replenished, from which the whole place can be irrigated daily during the summer, and which could be stocked with fish. The land contains many hundreds of young trees of the finest and most valuable varieties of apples, peaches, pears, plums, apricots, cherries and other fruits, the greater part of which already bear; a young bearing vineyard, thousands of bushes of currants and other small fruits; extensive beds of asparagus, rhubarb, and other fine vegetables. To be sold on easy terms, and for much less than it cost, owing to ill health of the owner.

Examine a 23-acre tract east of the Wieland place, and then ask me its price; you will be surprised.

I am authorized to dispose of the Congregational Church, on the south side, convenient to the contemplated Union Depot. It stands upon two lots, and will be sold cheap, or the building will be repaired and leased to responsible parties.

On lower San Francisco St., east of the railroad track, I can sell you properties desirable for homes or business propositions; these will bear examination.

I will take pleasure in showing prospective investors desirable building sites in the neighborhood of the Capitol, and in the vicinity of the Presbyterian Church, which in a few years will be worth double the present asking price.

About two blocks west of Guadalupe church, on De Vargas St., I can sell you three small homes.

**OUTSIDE PROPERTY.**  
At El Cuervo, 10 miles from the Rock Island road, I can sell you about 640 acres; patented; excellent grazing land.

Convenient to Las Vegas, I have for sale several large tracts of desirable land which I am permitted to sell at very low figure. One tract contains about 3,500 acres, and is located about three and one-half miles southwest of Las Vegas; nearly all of it is under fence; good grazing and water for stock; some timber. Another tract of 550 acres, 7 miles from Las Vegas; timber and grazing, with an excellent stream of water passing over it. Still another tract of 350 acres of farming, grazing and timber land, 8 miles west of Las Vegas, with running water upon it.

**MERCANTILE PROPOSITIONS.**  
To those desiring an investment in a good mercantile business located in a thriving town in Rio Arriba county I can suit them with the chance of their lives; general merchandise, large stock; store, two cottages, stables, and other buildings; large tract of land, with big orchard, producing the last season \$1,400; merchandise business pays from \$2,500 to \$3,000 a year and can be increased; fine fishing, boating and bathing; with horses, wagons, etc., 20 varieties of choice roses and other flowers in abundance; owner will allow prospective purchaser to thoroughly investigate before buying; good reason given for selling.

I have several other commercial and business propositions to submit those desiring to enter mercantile life and to grow up with the new era of prosperity now coming in with the Santa Fe Central, and an eight page daily; who says that the world don't move, and our city with it.

**HOUSES TO RENT.**  
One 9 room house, with all modern conveniences, excellent neighborhood. A new 6 room cottage, bath, stationary range and all modern conveniences. Also the building corner of Water st. and D & R railroad track lately used as a saw mill.

Several small houses, some adobe, some brick, others frame, upon my books, which I would be glad to show an intended purchaser. They are desirably situated, and will be sold cheap.

**UNFURNISHED ROOMS.**  
I can rent several rooms in the Herach building on lower San Francisco street, or will lease the whole building.

I have 3 or 4 rooms, and stable, that I will rent, on De Vargas St., two blocks west of Guadalupe church.

**FARMS & RANCHES.**  
I have inquiry from outside party for ranch in the Espanola valley; also for ranch in the district between Tesuque and Espanola; price must be reasonable.

## MINOR CITY TOPICS

Tweezer and Manicure Combination 25c, at GOEBEL'S.

Tickets for "A Dress Rehearsal" are 75 cents, and can be had at Fischer's Drug Store.

Hon. A. L. Morrison will address the Teachers' Institute Wednesday morning at 11:15.

A small gasoline engine, new, for sale by the New Mexican Printing company. Call or write and get prices.

All lovers of music should attend "The Dress Rehearsal" on the 27th inst. There are some very pretty duets and trios and the choruses are very good.

The regular meeting of Santa Fe Lodge No. 2, Knights of Pythias, will be held this evening and as business of particular importance will be brought before the lodge a full attendance is desired.

Mrs. Spencer of Albuquerque, who was operated upon some days ago by Dr. Poppelwell for cancer, is doing nicely at St. Vincent's hospital. Dr. Poppelwell generally does not believe in operating in cancer cases but it had to be resorted to in this case.

The Sunday school of the Presbyterian Church taught by A. R. McCord, chief clerk in the surveyor-general's office, left bright and early this morning for Nambé falls where the boys composing the class will be in camp for the next two or three days.

The predictions are for partly cloudy weather tonight and Wednesday with local showers and thunder storms. Maximum temperature yesterday was 81 degrees at 3 p. m., and the minimum was 52 degrees at 3:30 a. m. The temperature at 6 o'clock this morning was 61.

A number of tourists and sojourners in the capital drove to Sunmount yesterday and were greatly pleased with its location, fine water and commodious and comfortable accommodations for guests. Sunmount and the Tent City are attracting more favorable attention daily.

Santiago Romero, Antonio Jose Romero and Florenzo Gurduno, commissioners of the Acequia Nueva at Pojoaque in the northern part of this county, who have been cited to appear before the judge of the First district for alleged contempt, are in the city. They have filed through their attorney A. B. Renahan, Esq., returns denying the charges of contempt.

The New Mexican said it would, and it has. To be specific, it is now being issued in an enlarged and improved form, and is easily in the lead of all other Territorial journals. A man who wants to keep posted on what is going on in New Mexico, and especially wants information on capital doing and the latest political happenings, must have the New Mexican. Editor Frost has a host of friends in the Pecos valley country who note with pleasure the ever increasing improvement of his journal.—Carlsbad Argus.

An attractive program will be presented in connection with "A Dress Rehearsal" on the 27th inst. There will be several other numbers besides operetta and all will be interesting.

The Santa Fe railway has made a one and one-half fare for the round trip from all points in New Mexico to Santa Fe on the occasion of the Territorial tournament and annual meeting of the Firemen's association of New Mexico in this city September 2, 3 and 4. Tickets will be on sale from September 1 to 4 inclusive and will be good until September 7, inclusive. A large attendance of firemen and many others is expected here on this occasion.

Roofers are at work on the federal building putting in new lead gutters.

Good rains have fallen in the Santa Fe mountains east of town during the past four days.

John Patterson has had plans prepared for a new house and the contract has been let to Harvey & Eastgate.

A large number of carpenters and bridgemen came to the city yesterday and will probably go to work at various points along the Santa Fe Central.

The body of Frank L. Mortimer, who died at St. Vincent's hospital Saturday last, has been shipped to his former home, Broadlands, Ill. The deceased was a member of the Woodmen of America and carried an insurance in that order.

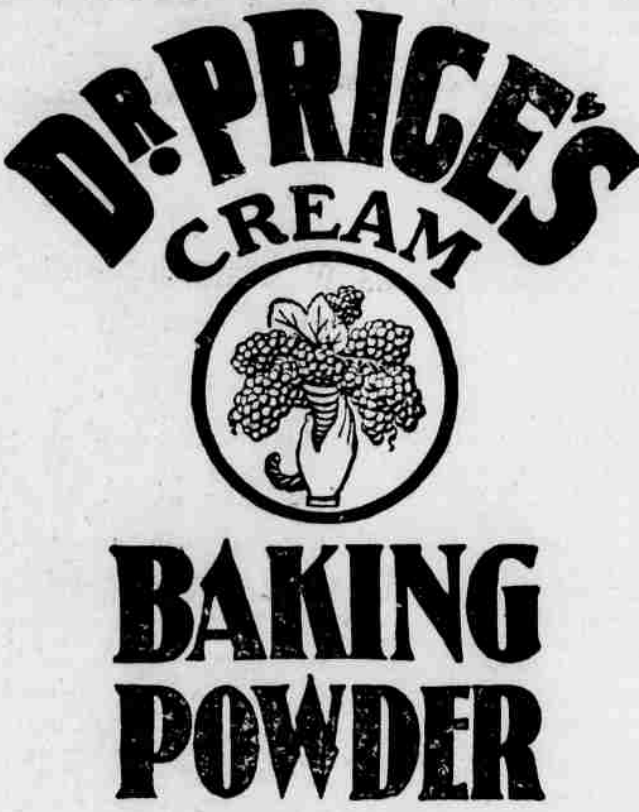
Bids for the construction of the new union depot on the south side were opened today by General Manager W. S. Hopewell of the Santa Fe Central and the result will be announced later, and as soon as the work of comparing the bids by the management can be done.

**FUNERAL OF MRS. GEORGE C. BRYAN.**

Capt. T. W. Collier of Raton and Dr. George C. Bryan of Alamogordo, passed up the road yesterday taking the remains of the late Mrs. George C. Bryan, daughter of Captain Collier, from Alamogordo, where she died, to Raton, where the funeral and interment took place today. A large concourse of friends attended the funeral as the deceased had been very popular and greatly liked by the people of Raton where she spent most of her life.

Try a New Mexican want "ad."

## Fifty Years the Standard



**Awarded  
Highest Honors World's Fair.  
Highest Tests U. S. Gov't Chemists**

PRICE BAKING POWDER CO., CHICAGO.

## BOULEVARD PROPOSED

Plan to Have Beautiful Driveway Made One of Santa Fe's Many Attractions.

One of the things frequently commented upon by the many visitors to this city is the lack of beautiful drives and roads that are constructed in a greater or lesser degree after the general boulevard plan. Now that the new scenic road is in progress the value of such driveways is being more and more recognized by the people of this city and of this section.

It has been suggested that one of the most attractive drives that could be found anywhere could be easily secured for Santa Fe and at a comparatively small outlay. The plan suggested is this, that a roadway be built from the Plaza to Sunmount.

The route proposed would be south on Don Gaspar avenue to a point beyond the capitol to the ridge, on which the old Ramona Indian school was located, and then due east along the crest of the ridge, until the Arroyo Chama was reached and thence to Harvard avenue, one of the graded streets of the Sunmount addition. One of the marked advantages of this route, it is claimed, consists of the easy facilities that would be afforded so far as the securing of water is concerned. One of the city mains, which is eight inches in diameter follows the crest of the ridge.

A. R. Gibson when seen said that the plan would prove of no little benefit to the city and would be a means of offering still another attraction to visitors. He said that such a scheme would receive his hearty co-operation and that he would aid in every way possible. He was willing to provide the trees that would be necessary for the flanking of the boulevard and that he would do this as an individual. The property rights he was confident could be secured for a comparatively small amount and that few investments would prove of more good and of greater benefit to the town and people of Santa Fe than just such a scheme as that proposed.

The matter should be taken up by the board of trade and acted upon promptly and energetically.

**PROSPEROUS SECTION**

Farmers and Stockmen in Southeastern Portion of Territory Have Had Good Season.

E. C. Abbott, Esq., has just returned from a trip through the eastern part of the Territory and reports that the condition of affairs throughout that section is most encouraging. Mr. Abbott left this city and went to El Paso and from there took the Rock Island and went to Omaha. Later he visited Denver and Colorado Springs and returned to this city by the way of Trinidad.

"From El Paso I went up through the eastern part of the Territory over the Rock Island, and everywhere evidences of prosperity are to be found. The whole country has been made verdant by the good rains that have fallen and the pasturage has been of the finest kind. The wool clip and the lambing have been very good and the people of that section of the country are happy and content with the excellent season that they have had. One thing that surprised me most was the great number of new settlements springing up all through that section. Houses are being put up everywhere and there are evidences of prosperity to be found on all sides."

"I was much impressed with the bright prospects of the town of Tucumcari and think it will be one of the leading towns of the eastern part of

the Territory before long. It is a junction point on the Rock Island and the amount of freight that is being handled by that road is something enormous. The traffic from the coal mines at Dawson is very great and the road does a large amount of business all along the line. Tucumcari also has bright prospects as far as being a center and supply point for the great sheep and cattle raising industries of that section.

"Santa Rosa is another good location and the town seems to be in a very prosperous condition. The railroad facilities afforded all through that section are very good and the general air of prosperity seems to pervade the country. In Quay, Roosevelt and Leonard Wood Counties affairs seem to be very flourishing and the people are very hopeful."

"While in El Paso I saw an old Santa Fean and he was enjoying a very prosperous season. I refer to 'Jim' Hughes who is now manager of the J. D. Hughes Printing company of El Paso. The business conditions throughout the southern and eastern portions of the Territory are very satisfactory."

**Notary Public, Stenographer and Typewriter. Translations**  
From Spanish into English and from English into Spanish carefully made. Office with U. S. Attorney for the Court of Private Land Claims, Federal Building. FRANCISCO DELGADO, Santa Fe, N. M.

**Santa Fe Opera House**  
A. M. DETTLBACH, MANAGER.

**TUESDAY, AUGUST 25TH**

**Joseph Newman COMPANY**

JOSEPH NEWMAN, . . . Song Humorist  
MISS ILA BURNAP, . . . Soprano  
MISS CARLOTTA BIXLER, . . . Violinist  
MISS SADA TALBOTT, . . . Impersonator  
MISS INEZ BROWN, . . . Pianist

The Laughable Comedietta  
"A MATRIMONIAL ADVERTISEMENT."

Admission 50c - Reserved Seats 75c  
Reserved Seats at Ireland's Pharmacy.

**THE EQUITABLE LIFE ASSURANCE SOCIETY**

"Strongest in the World"

IT IS NO ACCIDENT that  
THE EQUITABLE SURPLUS  
is now OVER \$75,000,000

And that it has paid DIVIDENDS to its policy-holders of over \$26,000,000 in the last TEN YEARS. It is simply the result of long years of economical management. It is no accident that there is such a great army of policy-holders. ARE YOU ONE OF THEM? The most progressive and successful people in the world naturally turn to the strongest and best Company in the World for their Life Assurance. Take your policy out TO-DAY.

MRS. L. A. HARVEY, AGENT.  
102 Chapelle St., Santa Fe. Office Hours 8-12

## Not Equaled in New Mexico

Not Excelled in America

## IRELAND'S ICE CREAM SODA

Made from Pure Jersey Cream

Purity, Quality and Satisfaction Guaranteed.

**S. SPITZ**

DIAMONDS

A FULL LINE OF

WATCHES, CLOCKS,  
SILVERWARE, ETC.

ALL KINDS OF DESIGNS IN

Filigree Fob Chains,

Filigree Neck Chains,

Filigree Souvenir Spoons,

Filigree Brooch Pins,

Filigree Bracelets,

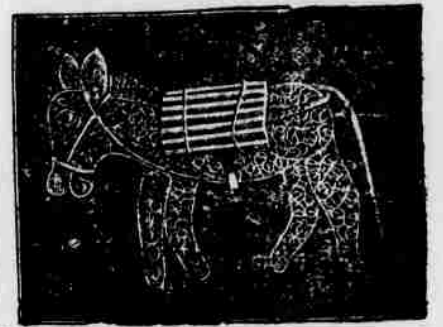
Filigree Card Cases,

South Side Plaza - Santa Fe

JEWELRY

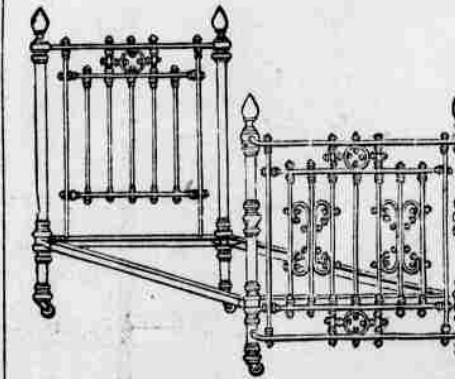
Manufacturer of

MEXICAN FILIGREE JEWELRY.



**D. S. LOWITZKI**

## Household Goods, Furniture and Queensware



We will furnish your house from kitchen to garret on easy payments, or will give reasonably low prices for cash.

All kinds of new and second-hand goods bought and sold.

WE DELIVER ALL GOODS.

San Francisco St., Santa Fe, N. M.

**WE LEAD THEM ALL!**

## THE CHARLES WAGNER FURNITURE CO.

306 and 308 San Francisco St.



UNDERTAKING AND EMBALMING.

Charles Wagner, Licensed Embalmer and Progressive Mortician.

We have just received a carload of Decorated English and French Haviland China, at prices out of sight! Our buying in car lots enables us to name prices that can not be met by any of our competitors. That is not our trouble. We are here to give you the benefit of our experience. Nineteen years of continued business with you is our reputation.

We Carry Everything in Household Furnishing. Our Goods are Marked in Plain Figures. One Price, and One Only.

**GOODS SOLD ON EASY PAYMENTS.**

Furniture, Queensware, Cutlery and Tinware, Stoves and Ranges, Fancy Haviland China of Every Description.

EVERYTHING GUARANTEED TO GIVE PERFECT SATISFACTION OR MONEY WILL BE REFUNDED

No Risk to do Business With Us.

TELEPHONE: Store, 10.

Night call at residence, No. 1.

Second-Hand Goods Bought and Sold.

## THE CHANCE OF A LIFETIME FOR PROSPECTIVE INVESTORS

## Building Lots

**TORRANCE MORIARTY ESTANCIA**

I will take pleasure in showing prospective investors and those desiring building sites for homes or business propositions in the above-named towns along the line of the Santa Fe Central Railway. Sites will be worth double the present asking price in the next year. I will "personally" give any information desired upon request.

**WM. P. CLARKE, Mgr. Real Estate Dept.,**

Office: SANTA FE CENTRAL RAILWAY, SANTA FE, N. M.



## GO TO KAADT'S FOR

### Indian and Mexican Curios.

#### LARGE STOCK NAVAJO BLANKETS

Our Photographic Parlors located on the second floor one door south of our Curio Emporium, is the best fitted in the city. The very latest styles and features of the art are employed. We Have First-Class Views for Sale Wholesale or Retail.

### New Mexico Military Institute ROSWELL, NEW MEXICO.

THE MILITARY SCHOOL OF NEW MEXICO ESTABLISHED AND SUPPORTED BY THE TERRITORY

Six men instructors, all graduates of standard eastern colleges. New buildings, all furnishings and equipments modern and complete; steam-heated, gas-lighted; baths, water-works; all conveniences. Tuition, board and laundry, \$200 per session. Session is three terms of thirteen weeks each.

Roswell is a noted health resort, 3,700 feet above sea level; well-watered. REGENTS—Nathan Jaffa, W. M. Reed, R. S. Hamilton, J. C. Lea and E. A. Cahoon. For particulars address, COL. J. W. WILLSON, Supt.

TELEPHONE NO. 9.

We make a Specialty of conveying tourists to all points of interest in and near the City

LIVERY

**CLOSSON'S**

STABLE

Our Equipment and Stock are Unexcelled in the West, and not Equaled in Santa Fe.

DON GASPARE AVENUE.

## Table Wines!

AT "OUR PLACE"

Will Be Found a Full Line of Table Wines for Family Trade.

Orders by Telephone Will Be Promptly Filled

W. R. PRICE, Prop. Santa Fe, N. M.

## Wabash Route

ST. LOUIS  
CHICAGO  
DETROIT  
BUFFALO  
AND ALL EASTERN CITIES.

The Shortest and Only Line Running Over Its Own Track from Kansas City or St. Louis to Niagara Falls and Buffalo. With All Modern Conveniences.

Time and Service Unexcelled  
Three Solid Fast Through Trains Daily

Stop-over allowed on all tickets via Niagara Falls. Meals served in the celebrated Wabash Palace Dining Cars. For further information inquire of Coupon Ticket Agents or address P. P. HITCHCOCK, General Agent, Passenger Department, DENVER, COLORADO.

Renovated and Refurnished Throughout.

Cuisine and Table Service Unexcelled

### The Palace Hotel

WILLIAM VAUGHN, PROP.

Large Sample Rooms for Commercial Men.

Santa Fe . . . . . New Mexico



**Malaria**

Is a veritable dragon of ill-health. It leaves in its path more physical wrecks than probably any other one disease peculiar to Americans.

WHY? Simply because upon the first indication of the malady the system is usually scourged with quinine, or that deadly mineral-colonel.

Don't Do It. It's Dangerous. It isn't at all necessary either. We positively guarantee

**HERBINE**

to prevent and permanently cure any form of malaria. It is purely herbal. Has all the virtues of quinine and colonel—none of their deadly effects. It corrects all liver, kidney and stomach troubles. 50c per bottle. All Druggists.

## MINES AND MILLS

A "glory hole" is the name given by miners to an open-cut where the ore broken passes downward through an upraise from workings below and from there sent out of the mine either through a tunnel or a shaft.

California mines are nearly all below an altitude of 7,000 feet. Colorado mines are almost entirely above that elevation, most of them being between 9,000 and 12,000 feet. The Mt. Lincoln mine in Colorado is 14,000 feet above sea level.

As many machine drills may be employed in sinking a shaft as can be conveniently used, but in three compartment shafts of liberal dimensions not more than four machines can be used to advantage, two bars carrying two machines each.

The Deep Mining Tunnel company is working two shifts at Baldy in Colfax County. The tunnel is in 1,000 feet.

The Oro dredge on the Moreno Placers in Colfax County is working night and day. A two-days' run resulted recently in a 7-pound nugget of pure gold. During the past fiscal year the company produced over one-fourth of the gold produced in New Mexico, it having cleared over \$100,000.

The Sierra County Advocate reports that the El Oro and Trippe mines at Andrews have changed hands and that work is to be soon resumed on these properties.

In his report to the United States Geological Survey on the production of copper in 1902, Charles Kirchhoff says that the copper-mining industry of the United States suffered during 1902 from the reaction which followed the unsuccessful attempt during 1901 to maintain the value of the metal at an artificial level. The collapse which came toward the close of 1901 left many producers committed to sales covering a long period, at low prices with the menace of heavy accumulations of metal constantly over the market. Yet production was heavier during 1902 than it had been in 1901, because some of the important mines were worked to full capacity and because some of the enlargements and improvements previously begun became effective during the year. Furthermore, a number of new enterprises first produced important quantities of metal. On the other hand, accidents and labor troubles cut down the outputs of some of the larger undertakings. Unless unforeseen events cause widespread or prolonged stoppage of operations at the mines, Mr. Kirchhoff thinks that the production of copper in the United States will be considerably larger in 1903 than it has ever been. The Lake Superior district will yield considerably more copper; Arizona is expected to return a considerably larger product; Utah may reach a total of 35,000,000 pounds; and Wyoming, Nevada, Colorado, New Mexico, and the southern states will report an increase. The consumption of copper in the United States was enormous in 1902. It was larger also in other leading industrial countries. As compared with 268,782 long tons in 1901, the total production of copper in the United States in 1902 was 294,423 long tons, of which the Lake Superior district produced 76,165, or 25.9 per cent; Montana, 128,975 long tons, or 43.8 per cent; and Arizona, 53,547 long tons, or 18.2 per cent. This is an increase in the total production of 25,641 long tons, or nearly 10 per cent, as compared with 1901. Utah is forging to the front as one of the most important copper states, and it is notably in the Bingham Camp that development has been most rapid. Only small quantities of copper ore have been shipped from Alaska to Puget Sound smelters, but it is known that large deposits of copper ore exist, whose development is being taken seriously in hand. The imports of copper ore in 1902 were valued at \$7,921,641, as compared with \$14,394,662 in 1901; and the imports of copper in bars, ingots, pigs and in manufactured forms were valued at \$12,864,021, as compared with \$11,820,459 in 1901. The exports of domestic copper in different forms were valued at \$46,811,729 in 1902, as compared with \$36,071,448 in 1901. The exports from Baltimore, Md., increased from 54,377,355 pounds in 1901 to 103,607,256 pounds in 1902; and from New York the increase was from 133,540,150 pounds in 1901 to 236,622,515 pounds in 1902. In the aggregate the reporting mines had a stock of 155,665,652 pounds of copper on January 1, 1903, as compared with 282,014,297 pounds on January 1, 1902, a decline of over 126,000,000 pounds during 1902. The estimated consumption in 1902 was 551,658,191 pounds, as compared with 392,761,014 pounds in 1901, and with 356,891,121 pounds in 1900. The average selling price of Lake copper during 1902 was 11.86 cents per pound.

#### THE DEATH PENALTY.

A little thing sometimes results in death. Thus a mere scratch, insignificant cuts or puny boils have paid the death penalty. It is wise to have Bucklen's Arnica Salve ever handy. It's the best salve on earth and will prevent fatality, when burns, sores, ulcers and piles threaten. Only 25c at Fischer Drug Co.

#### Scratch Paper.

Made from ledger, linen flat and book papers at 10 cents per pound at the New Mexican. This is scrap paper put up in pads and is less than the paper originally cost. Only a limited supply.

#### AMERICAN MINING CONGRESS.

Deadwood and Lead, S. D., Sept. 7-11. For this occasion the Santa Fe will sell tickets to Deadwood at one fare plus \$2 for the round trip, (\$34.55) tickets will be sold Sept. 24 to 26th, good for return until Sept. 30, 1903. H. S. Lutz, agent, Santa Fe, N. M.

#### STOP THAT COUGH!

When a cough, a tickling or an irritation in the throat makes you feel uncomfortable, take Ballard's Horehound Syrup. Don't wait until the disease has gone beyond control. Mr. and Mrs. J. A. Anderson, 354 West 5th St., Salt Lake City, Utah, writes: "We think Ballard's Horehound Syrup the best medicine for coughs and colds. We have used it for several years; it always gives immediate relief, is very pleasant and gives perfect satisfaction." 25c, 50c, \$1.00 at Fischer Drug Co.

#### Trans-Mississippi Commercial Congress, Seattle, Wash., August 18-20, 1903.

For the above occasion the Santa Fe will sell tickets to Seattle, Tacoma and Portland at a rate of \$48.75 for the round trip, dates of sale August 2nd to 15th, good for return until October 15th, stop-overs allowed. For particulars call on any agent of the Santa Fe.

H. S. LUTZ, Agent, Santa Fe, N. M.

#### NOT OVER-WISE.

There is an old allegorical picture of a girl scared at a grass-hopper, but in the act of heedlessly treading on a snake. This is paralleled by the man who spends a large sum of money building a cyclone cellar, but neglecting to provide his family with a bottle of Chamberlain's Colic, Cholera and Diarrhoea Remedy as a safeguard against bowel complaints, whose victims outnumber those of cyclones a hundred to one. This remedy is everywhere recognized as the most prompt and reliable medicine in use for these diseases. For sale by all druggists.

#### AMERICAN BANKERS' ASSOCIATION.

San Francisco, Calif., Oct. 20-23, 1903. For this occasion the Santa Fe will issue tickets to San Francisco and Los Angeles and return at one fare for the round trip, Los Angeles, \$38.45, San Francisco \$43.05. Dates of sale October 9th to 15th, final return limit November 30th.

H. L. LUTZ, Agent, Santa Fe, N. M.

#### DYSENTERY CURED WITHOUT THE AID OF A DOCTOR.

"I am just up from a hard spell of the flux" (dysentery) says Mr. T. A. Pinner, a well known merchant of Drummond, Tenn. "I used one small bottle of Chamberlain's Colic, Cholera and Diarrhoea Remedy and was cured without having a doctor. I consider it the best cholera medicine in the world." There is no remedy of employing a doctor when this remedy is used, for no doctor can prescribe a better medicine for bowel complaint in any form either for children or adults. It never fails and is pleasant to take. For sale by all druggists.

#### SOVEREIGN GRAND LODGE, I. O. O. F., Baltimore, Md., Sept. 21st 28th.

For this occasion the Santa Fe will sell tickets to Baltimore and return at a rate of \$55.50 for the round trip, dates of sale from New Mexico points Sept. 16th, 17th and 18th, good for return passage until Oct. 3d, 1903.

W. J. BLACK, G. P. A., Topeka, Kans.

H. S. LUTZ, Agent, Santa Fe, N. M.

Mrs. Mollie Allen of South Fork, Ky., says she has prevented attacks of cholera morbus by taking Chamberlain's Stomach and Liver Tablets when she felt an attack coming on. Such attacks are usually caused by indigestion and these tablets are just what is needed to cleanse the stomach and ward off the approaching attack. Attacks of bilious colic may be prevented in the same way. For sale by all druggists.

#### TERRITORIAL FAIR.

Albuquerque, N. M., Oct. 12th to 17th, 1903. For this occasion the Santa Fe will sell greatly reduced rate tickets from all points in New Mexico and Colorado to Albuquerque and return. The rate from Santa Fe will be \$2.65 for the round trip. Dates of sale Oct. 11th to 16th, good for return passage until Oct. 19th.

H. S. LUTZ, Agent.

#### CURES SCIATICA.

Rev. W. L. Riley, L.L.D., Cuba, New York, writes: "After fifteen days of excruciating pain from sciatic rheumatism, under various treatments, I was induced to try Ballard's Snow Liniment; the first application giving me first relief and the second entire relief. I can give it unqualified recommendation." 25c, 50c, \$1.00 at Fischer Drug Co.

Summer Tourist Rates to Colorado Points. On sale daily via the Santa Fe from June 5 to October 15, good for return passage until October 31, to Denver and return \$22.55, Pueblo and return \$17.55, Colorado Springs and return \$19.55, Glenwood Springs and return \$28.65. Stop-overs allowed at and north of Pueblo. For particulars call on any agent of the Santa Fe. H. S. LUTZ, Agent, Santa Fe, N. M.

When you want a physic that is mild and gentle, easy to take and certain to act, always use Chamberlain's Stomach and Liver Tablets. For sale by all druggists.

## DO YOU SEE THE POINT

CLEAN AND SWEET EVERY MORNING. We run the only Daily Bread, Cake and Pie Delivery in the City. The Only Way is the Right Way. Enough said of the Delivery. THE QUALITY—Try Us. "The Proof of the Pudding is in the Eating Thereof."

IT WILL PAY YOU TO STEP AROUND THE CORNER FOR YOUR GROCERIES, PROVISIONS, ETC.

Jersey Cream Flour Has Never Failed. We can sell you a Sack or Car.

GROCERS—**KINSELL & CO.**—BAKERS

Telephone, No. 40. PROMPT DELIVERIES. Water and Galisteo Sts.

CHARLES W. DUDROW,

**LUMBER - SASH - DOORS**

All Kinds of Building Material.

TRANSFER AND STORAGE

We Haul Everything that is Movable.

Phone 35.

SANTA FE and CERRILLOS, N. M.

INCORPORATED

**H. B. CARTWRIGHT & BRO.,**  
**WHOLESALE GROCERS**

Grain, Flour and Potatoes • Stationery, Patent Medicines and Grocers' Sundries.

PROMPT ATTENTION GIVEN MAIL ORDERS.

SANTA FE, N. M.

**WINTER IS COMING!**

NOW is the time to lay in your coal and get good, clean stock, and have it when you want it.

SPECIAL: Hard Coal at \$7.00 Per Ton, UNTIL SEPTEMBER 15TH

**CAPITAL COAL YARDS.**

V. J. BAUER, Manager.

RUSH ORDERS RECEIVE PROMPT ATTENTION.

Temporary Office with Leo Hersch. TELEPHONE, 45.

The most conveniently located and only fire-proof and steam-heated Hotel in the city.

Electric lights, baths and sanitary plumbing throughout. Everything up to date.

George E. Ellis, Proprietor

**THE CLAIRE**

American or European Plan

First-class Cafe and Buffet connected.

Fine sample room for Commercial Men.

Postal Telegraph and Cable Co. Office.

SANTA FE, N. M.

**P. F. HANLEY**

DEALER IN

**Fine Wines, Liquors & Cigars**

Imported and Native Wines for Family Use. OUR SPECIALTIES—Old Crow, McBrayer, Guckenheimer Rye, Taylor and Paxton, Old Jordan and Monogram, Ky., Whiskies.

SAN FRANCISCO STREET

SANTA FE, N. M.

**Spring, Summer, Autumn, Winter.**

ANYTHING & EVERYTHING WHOLESALE & RETAIL AT **BLAIN'S BAZAAR**

J. H. BLAIN, Santa Fe, N. M.

**J. WEINBERGER**

SOUTH SIDE PLAZA, SANTA FE, NEW MEXICO.

Our Motto is to Sell the Best

**WINES, LIQUORS, CIGARS**

For the Least Possible Money

Buy your Goods Here. Family Trade Solicited. Satisfaction Guaranteed.

Telephone No. 94



## CHEAP ROUND TRIP TICKETS

Via SANTA FE

Los Angeles and San Francisco, August 2 to 15, and October 12 to 18, \$38.45.  
Denver, Colorado, \$22.55. On sale daily.  
Colorado Springs, \$19.55. On sale daily.  
Pueblo, Colorado, \$17.55. On sale daily.  
Grand Canyon, Arizona, \$36.35. On sale daily.  
Phoenix, Arizona, \$40.25. On sale daily.  
Paywood Hot Springs, New Mexico, \$18.20. On sale daily.  
Seattle, Tacoma, and Portland, \$48.75. On sale August 2d to 15th.

### HOMESEEKERS' EXCURSIONS.

August 4th, 18th, September 1st and 15th, tickets will be sold from all points in Illinois, Iowa, Missouri, Kansas and Nebraska to points in New Mexico at one fare plus \$2.00 for the round trip.

### ONE-WAY HOMESEEKERS' TICKETS.

On the First and Third Tuesday of each month one-way second-class tickets will be sold from Kansas City, St. Joseph and east to points in New Mexico at half rate plus \$2.00.

### TELL YOUR FRIENDS IN THE EAST.

You can deposit your money with the local agent, who will telegraph free of charge and have tickets furnished from any part of the world.  
Pullman reservation secured in advance, and all information in regard to rates, time and connections cheerfully furnished on application.  
W. J. BLACK, G. P. A., Topeka, Kansas.



For full particulars as to limits, routes, etc., address any agent of the Santa Fe System.

H. S. LUTZ, Agent,  
Santa Fe, N. M.

OLDEST IN THE CITY

J. LOWITZKI,

Lower San Francisco Street.

## Livery, Feed and Sale Stable

HACKS AND VEHICLES PROMPTLY FURNISHED.

Careful Drivers for Tourist Parties. Everything First-class.

TELEPHONE 57.

## OJO CALIENTE HOT SPRINGS.

These Celebrated Hot Springs are located in the midst of the Ancient Cliff Dwellers, twenty-five miles west of Taos, and fifty miles north of Santa Fe, and about twelve miles from Baranca Station, on the Denver and Rio Grande Railway, from which point a daily line of stages run to the Springs. The temperature of these waters is from 90 to 122 degrees. The gases are carbonic. Altitude, 6,000 feet. Climate very dry and delightful the year round. There is now a commodious hotel for the convenience of invalids and tourists. These waters contain 1,686.24 grains of alkaline salts to the gallon, being the richest alkaline Hot Springs in the world. The efficacy of these waters has been thoroughly tested by the miraculous cures attested to in the following diseases: Paralysis, Rheumatism, Neuralgia, Consumption, Malaria, Bright's Disease of the Kidneys, Syphilitic and Mercurial Affections, Scrofula, Catarrh, La Grippe, all Female Complaints, etc., etc. Board, lodging and bathing, \$2.50 per day; \$14 per week; \$50 per month. Stage meets Denver trains and waits for Santa Fe train upon request. This resort is attractive at all seasons, and is open all winter. Passengers for Ojo Caliente can leave Santa Fe at 9 a. m., and reach Ojo Caliente at 4 p. m. the same day. Fare for round-trip from Santa Fe to Ojo Caliente, \$7.40. For further particulars, address

ANTONIO JOSEPH, Proprietor  
Ojo Caliente, Taos County, N. M.

## LOOK AT THE CLOUDS FROM THE TOP

And so see the Silver Lining. You can do it from OUR TRAINS. We go above them in places.

## Mexican Central Railway

With Its Two Thousand Miles of Track Reaches All the Principal Places of Interest and Note.

Address the undersigned for full and reliable information.

W. D. MURDOCK, A. G. P. A., City of Mexico  
W. S. MEAD, Commercial Ag't El Paso,

An Attractive Couple.

St. Louis Special,  
2.00 p. m.

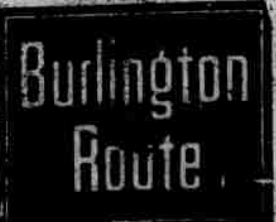
Chicago Special,  
4.15 p. m.

These are the popular afternoon trains out of Denver.

They are handsomely equipped, the dining service is right, and they make fast time.

Another good train for Omaha, Chicago, Kansas City and St. Louis leaves at 10.00 p. m.

Ticket Office, 1039 17th St.  
O. W. VALLERY, General Agt.  
DENVER



### DANIEL'S WAY.

He's a mild sort of critter as you'd ever wish ter see; While there may be better husbands, he is good enough fer me. He is nothin' much ter look at, but he's made o' wearin' stuff. An' it's mighty seldom ever 'at you see him in a huff. I kin twist him an' my finger, hold him under me, an' I kin make him my thumb. He's so sweet an' 'easy goin', but you wouldn't call him dumb; For it ain't no sort o' secret 'at we all jest stand aroun' An' hold our breaths when Dan'l planks his foot right down.

I kin feed him on cold taters an' put water in the pot. Till the coffee's nigh on drown'd an' it never makes him hot. I kin set an' read the paper 'at we git jest once a week. When he simply aches ter glimpse it an' he's patient an' he's meek. I kin jest neglec' his buttons an' the darnin' of his socks. An' kin ble his aigs fer breakfast till they're hard as any rocks; But my Dan'l's got his limits, an' there's times you'll see him frown. An' usin' violent language, plank his foot right down.

He jest doesn't seem to mind it if he isn't right well fed. An' he lets me haul the kiver ter my own side o' the bed; He will build the fires an' wind the clock an' fire the cat at night. An' upon the whole I must say 'at he aims ter treat me right. Yit though Dan'l is peccoliar in a certain few respects, An' if I rip my bastings with his razor he objects. In many ways my Dan'l is the meekest man in town— But there is times when Dan'l planks his foot right down.

—Chicago Daily News.

## Humanizing the Machine

"I've been ordered to report to you, sir, for orders," said a boyish and somewhat diffident voice. Head of Department Williams looked up irritably. Things had been going amiss on the wholesale crockery floor that morning. An invoice of goods had been sent to the wrong customer, and there had been a choleric letter in consequence; and by mistake another small invoice had been charged to an out-of-town dealer whose credit had been recently blacklisted. Two errors like that in one morning, especially in such a methodical and clocklike-work department as the wholesale crockery, was enough to upset the equanimity of its chief. True, he was head of the department, and senior clerk in service, but there were gray-haired men under him who were in every way competent to take his place at the desk, and he could never quite get over the incongruity of his position over them.

"You're no good," he said, brusquely, as he shot a quick, comprehensive look at the frail figure before him; "we want a strong man who is able to lift boxes and handle heavy crockery."

"I'll do the best I can, sir." "Oh, of course; that's understood. Well, if they've sent you to me I must make the best of it. Here, Tom," to a broad-shouldered man who was wheeling a heavy truck across the floor, "take this"—he was about to say young man, but in his impatience substituted "duffer" instead—"and show him about unpacking and distributing that new lot of Dresden. And, oh, I say," as the new man reddened and turned to follow his guide, "what's your name?" "Williams."

"H'm!" The chief turned to his books again, and made the third error of that morning, charging a dozen plates where he should have credited them. He did not like so many namesakes, and there were already three or four Williamses in the establishment. Well, thank goodness! this was not a poor cousin who would look to him for favor.

Presently the mail was brought in, and several papers and a letter were tossed on his desk. He picked up the letter and opened it carelessly; but as he did so his indifference became amazement, and he glanced quickly back at the address to assure himself of its reality. Yes, there it was, "Mr. John Williams, at Burton & True's," and the invitation was as straightforward and direct as the most skeptical could wish, a cordial request for his company at an informal Thanksgiving dinner on the morrow, and signed by "Mrs. Thorndyke Ware."

He drew a long breath. All the 22 years of his life had been passed in the city, but he had never received an invitation like this before—nor, indeed, many invitations of any kind. He was entirely alone in the world, and since he had entered the employ of Burton & True, as sweeper in the basement, 12 years before, he had given all the force of his strong, determined nature to the mastery of the business. Society and social intercourse had been a closed—and, as he thought, an undesired—book to him; but this cordially worded invitation brought him a thrill such as had never come to him through any of his promotions from one department to another. But still he could not quite understand it. The other clerks received invitations, but they were something entirely different from this. Mrs. Thorndyke Ware

was very wealthy and very exclusive, and this invitation was one which he knew even Mr. Burton and Mr. True themselves might have been glad to receive. The only solution he could imagine was that, as he had been the shipping clerk who had had charge of the packing of many costly articles for the Ware mansion, this might be meant as a token of appreciation for his services—but this explanation was anything but satisfactory.

However, he presented himself at the Ware mansion at the time appointed, and was ushered into a large room that was already filled with guests. Mrs. Thorndyke Ware received him graciously, but, as he thought, with a slightly surprised expression on her face; then he drifted away from one group to another.

At first he felt diffident and out of place, but as this wore off he found himself talking with men whose names he was familiar with as being leaders in the financial world. And little by little they began to listen to him with interest, and then with deference. John Williams had not passed much of his time in idleness, and, besides thoroughly familiarizing himself with the various makes and trade marks and other intricate details of the goods in which his employers dealt, he had stored his mind with a vast fund of miscellaneous information. And it so happened that rare and unique makes of earthenware was just now the subject in which the fashionable world was interested.

But as the evening wore away his face began to look puzzled, then questioning, then grave. At last he made his way across the room to his hostess.

"I am glad you have come," she said. "While the guests were arriving I could only just bid you welcome. Now, how is Agnes and how are your sisters?"

"It is about them I wish to speak," he said, bluntly. "Mr. Ware asked me if my people were well, and one of your daughters just asked me if my sisters were coming to the city soon. Now, I am alone in the world. My mother has been dead ten years, and I never had any sisters. There has been a mistake."

"Aren't you John Williams, at Burton & True's?"

"Yes."

She looked puzzled.

"Is there another clerk of the same name in the establishment?"

"Not that I know of. There are several Williamses, but I do not think any of them are named John."

"It is curious. Agnes Williams wrote me that her son was coming to the city to engage with Burton & True, and that she hoped I would look after him a little. She is an old school friend of mine. I thought that you appeared rather older than her son could be."

"Well, my being here is a mistake," he said, gravely. "But you must allow me to thank you, Mrs. Ware, for the pleasantest evening of my life. I will go now. I am sorry for the person whose place I have usurped, but I cannot help being a little glad on my own account. It has given me something to think about and has shown me there are more sides to life than a narrow-minded man sometimes sees."

"But, really, you must not go until the end of the evening," Mrs. Ware interposed, pleasantly. "It has been a mistake, certainly; but I hope you will not make that a reason for leaving us."

He shook his head.

"I would better go," he answered.

"I do not like to take advantage of mistakes."

When he saw the new man come in the next morning he left his desk with a sudden presentiment of the truth.

"What did you say your name was?"

"Williams, sir."

"John?"

"Yes; John Williams."

"H'm!"

"I am Mr. Burton's nephew," the new man continued, blandly, "and am learning the routine of each department, with a view of entering the firm in January. I would have told you this yesterday if you had given me an opportunity. But I am afraid I shall have to ask you to excuse me from handling the heavy boxes. I am not particularly robust, and must content myself with the lighter work."

"Very well."

Head of Department Williams' creed was to view the world as a huge machine, of which he and his fellow-clerks were cogs. Emotion of any kind was looked down upon by him as unbusinesslike; so now he turned stoically to his desk, and his copy clerk thought he had merely been giving some orders to the new man.

But all through the day there was a peculiar light in the matter-of-fact eyes of the chief, and when he went to his boarding house that night he did not turn to his books, as usual, but sat gazing out across the twinkling lights of the great city, thinking.

In the main office a few weeks later Mr. Burton suddenly laid down his pen.

"Do you know, True," he said, confidentially, "I believe our machine clerk, Williams, is becoming humanized. I actually caught him lifting a beggar child out of the mud to-day and saw him giving her pennies. I must ask him up to the house some time. I wouldn't be surprised if there was considerable good material beneath that shell of his."

"Yes," answered Mr. True, poising his pen meditatively above his ledger, "I think you are right. Williams has been a good automaton, but I always held that a business man could not reach the best success by mere mechanical ability," and then both bent over their desks and were speedily lost in the computations evolved by their swiftly moving pens.—N. Y. Times.

ON AUGUST 20, 1903,

## Santa Fe Central Railway

IN CONNECTION WITH THE



Will Open a New Passenger and Freight Line Between

SANTA FE, N. M.,

VIA TORRANCE

EL PASO, TEXAS,

THUS IS THE LONG-WISHED FOR EVENT ACCOMPLISHED.

Call on local agents for full information regarding this new line, the country it runs through, Freight and Passenger Rates and other desired particulars.

A. N. BROWN, G. P. & P. A., E. P. N. E. SYSTEM, EL PASO, TEXAS.

## THE DENVER & RIO GRANDE SYSTEM

Denver & Rio Grande, Rio Grande Western, Rio Grande & Santa Fe and Rio Grande Southern Railroads.

THE POPULAR LINE TO

Colorado Springs, Pueblo, Cripple Creek, Leadville, Glenwood Springs, Aspen, Grand Junction, Salt Lake City, Ogden, Butte, Helena, San Francisco, Los Angeles, Portland, Tacoma, and Seattle. Also Reaches all the Principal Towns and Mining Camps in Colorado, Utah and New Mexico.

## THE TOURIST'S FAVORITE ROUTE

To all Mountain Resorts

The Only Line Passing Through Salt Lake City Enroute to the Pacific Coast

THROUGH SLEEPING CARS

BETWEEN DENVER AND

ALAMOSA CRIPPLE CREEK LEADVILLE GLENWOOD SPGS GRAND JUNCT'N  
SALT LAKE CITY OGDEN PORTLAND SAN FRANCISCO LOS ANGELES

DINING CARS SERVICE A LA CARTE ON ALL THROUGH TRAINS

J. A. EDSON, Manager, Denver, Colo.  
S. K. HOOPER, Gen'l Pass'r and Ticket Agent, Denver, Colo.  
A. S. HUGHES, Gen'l Traffic Manager, Denver, Colo.

Tent City, Coronado Beach, California.



## Go West to the Ocean

California's Summer Climate is the Finest in the World  
Cool Trip on the Santa Fe.

Surf-Bathing--Ocean Breezes--and the Snow-Capped Sierras.

You can buy a combination round trip ticket to San Diego this summer—including railroad and Pullman fare, meals en route, one day at the Grand Canyon, and two weeks' board and lodging at Coronado Tent City—at a very low price. Tent City is a popular Southern California summer seaside resort. Write for all particulars about this delightful vacation trip.

Atchison, Topeka & Santa Fe Ry. Santa Fe City Ticket Office  
Catron Block Santa Fe, N. M.

## 4 IMPORTANT GATEWAYS 4



No Trouble to Answer Questions.

## TAKE "CANNON BALL" FAST TRAIN

This handsomely equipped train leaves El Paso daily and runs through to St. Louis without change, where direct connections are made for the North and East; also direct connections via Shreveport or New Orleans for all points in the Southeast.

Latest Pattern Pullman Buffet Sleepers  
Elegant New Chair Cars—Seats Free  
Solid Vestibuled Trains Throughout.

For descriptive pamphlet, or other information, call on or address

E. P. TURNER, G. P. & T. A., DALLAS, TEXAS.

K. W. CURTIS, S. W. P. A., EL PASO, TEXAS.



## THAT SPECIAL SALE

Last week we sold nearly every article advertised at a specially reduced price, which convinced us that our "ad" is largely read and that the people of Santa Fe appreciate bargains when they can get them.

This week we are offering special bargains in Dishes and Kitchen Furniture. Let us convince you.



## COME AND SEE OUR NEW FURNITURE

Make your home comfortable during the hot weather. With the many conveniences we offer you can convert your home into a summer resort. We aim to provide something newer, something different, something better than other stores, and at lower prices.



The Latest Improved  
AMERICAN  
WASHING MACHINE  
—Best on Earth—

## A Wagon's First Cost

is not all there is to it. There are plenty of low priced wagons (mighty dear in the end), that actually look well—at first. You can't see the paint-covered wood—pithy, "dead," the defective axle-wood, or foresee the shrinking, rattling, loosening of spokes, the tire setting and constant repairs, that will rise up to trouble you in time. All said and done, it pays to buy once for all a dependable wagon.

## STUDEBAKER WAGONS

are that kind. That is a matter of common knowledge—testified to by every man who ever bought one. Built on honor by master mechanics out of selected and perfectly seasoned materials. Definite, sterling worth in each job of Vehicles and Harness, that result in longer and better service than you have a right to expect. You don't make mistakes if you pin your faith there.



### Studebakers in Your Town.

The undersigned are the local sales agents. We carry a generous stock, we'll order and quickly get anything you want. You see the goods and know what you are buying. We stake our reputation on pleasing you. Always ready to show you. Give us a call.

Santa Fe Hardware & Supply Co.,  
Santa Fe, N. M.

## THE FARMER'S FRIEND

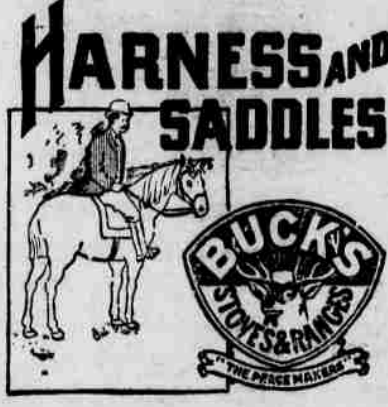
The pride of the family—our new STUDEBAKER



## HANDSOME HANDMADE HARNESS.

At Prices less than you would expect to pay for machine made goods. We are sole agents for

Padgett Bros.' Cowboy Saddles. Made on honor \$35 will buy the saddle you have been paying \$50 for. We have the latest thing in Ladies' Saddles, price reduced from \$35.00 to \$22.50.



# SANTA FE HARDWARE & SUPPLY CO.

SANTA FE, N. M.



HONEST GOODS  
HONEST PRICES

## Jobbers and Retailers

OUR MOTTO:  
LIVE, AND LET LIVE!

## WILL NOT BE DELAYED

Work on the Scenic Road Will Continue—Survey To Be Made Through Reserve.

Superintendent I. B. Hanna, who is in charge of the Pecos forest reserve, has addressed an official communication to County Commissioner Arthur Seligman regarding the survey for the "Scenic Route" road through the reserve. There will be no opposition and no hindrance to the progress of the survey and Superintendent Hanna will do everything that he can to advance and aid not only the work of the survey but also actual construction. In answer to Mr. Seligman's communication addressed to Mr. Hanna recently, requesting authority to proceed with the work, the following letter from the superintendent is self-explanatory:

"Dear Sir: Replying to your letter dated 20th inst. having reference to the petition submitted by you in accordance with the rules governing forest reserves, you are advised that said petition was forwarded to the Department with favorable recommendation thereon immediately upon its receipt, but, as yet, no instructions have been received by me. I will visit the camp next Monday and endeavor to arrange for work to proceed on the road.

"It will not be necessary to secure permission to survey the right of way across the reserve. This I will arrange for with Mr. Gwin.

"I will notify you upon receipt of advice from Washington having reference to the Scenic road.

"Very respectfully,

"I. B. HANNA, Forest Supt."

### COMMISSIONERS' REPORT.

Viewers Fix the Value of Land for Railroad Purposes.

The commissioners appointed to view the parcels of land condemned in the southern portion of the city for the Santa Fe Central have completed their work and made their report to the First judicial district court today. The commissioners fixed damages on the lots of P. E. Moisson, Mrs. B. M. Thomas and W. M. Berger. The properties affected are those lots lying beyond the old cemetery and near the Manderfield property in ward No. 2. The commission was composed of Charles Hasplemath, Hon. Arthur Seligman and Major Fred Muller.

### SANDOVAL COUNTY INSTITUTE.

First Held Under the Conductorship of Brother Elzeir.

The Teachers' Institute of Sandoval county is in progress in the town of Bernalillo and is doing good work. The institute is being held in a hall furnished in their buildings by the Christian Brothers, and Brother Elzeir of St. Michael's College of this city is the conductor. He is a very able educator and forcible speaker. He has had over thirty years' experience in teaching and is giving those who are attending the institute the benefit of this long experience and his thorough knowledge of educational affairs. The institute will close Friday. Examinations for school teachers are being held this week. The following teachers are in attendance: Mrs. Carolina E. Montoya, Misses Lizzie Slaughter, Josefa Gonzales, Abeline Trujillo, Gertrude Brown; Messrs. Jose de Jesus Lopez, Manuel Trujillo, Charles A. Shields and O. P. Hovey.

### HOTEL ARRIVALS.

Bon Ton: Antonio Valdez, Galisteo; Juan Tapia, Cerrillos; Antonio Gallegos, Bernalillo.  
Normandie: Carl Runge, Milwaukee; L. D. Sugar, J. Singler, New York; R. B. Thomas, Cerrillos, George Grant, Los Angeles.  
Palace: J. M. McLeish, Chicago; G. H. Stone, Alamogosa; C. W. Wright, Albuquerque; C. L. Pollard, Espanola; T. P. O'Keefe, San Antonio; J. A. Brinkie, Charles R. Stone, Kansas City.  
Claire: W. H. Beckwith, John Crenshaw, Tampa, Fla.; A. G. Miller, Taos; C. W. Wright, Albuquerque; E. J. Petrie, La Vista; W. W. Betts, Denver; H. J. Garvey, St. Louis; F. E. Walker, Denver; V. A. Henry, J. V. Cansaul Las Vegas.

### CLODBURST IN CANON WASHES OUT OLD ROAD.

Frank H. McElroy, formerly news editor of the New Mexican but now an assistant to Superintendent Bursum in the construction of the "Scenic Route" road, was in town yesterday. He reports that the clodburst in the Santa Fe canon last Saturday washed out a large stretch of the old road, and that Sunday Superintendent Bursum put a force of his men at work cutting a road through the debris so as to allow teams to pass. The new road was not affected by the clodburst.

New Mexican want and miscellaneous ads always bring good results.

### NOTICE OF DISSOLUTION.

Notice is hereby given that the partnership in the lumber business heretofore conducted by the undersigned under the name of Bond & Jones has this day been dissolved by mutual agreement. G. W. Bond & Bro. will pay all debts due by Bond & Jones and is authorized to collect all indebtedness due or to become due to said firm.

W. A. JONES,  
G. W. BOND & BROS.  
Espanola, N. M., August 13, 1903.

### Stock Market.

New York, Aug. 25.—Closing stocks—Atchison, 92½; Atchison preferred, 99½; New York Central, 121½; Pennsylvania, 124½; Southern Pacific, 45½; Union Pacific, 76½; Union Pacific preferred, 87; United States Steel, 29½; United States Steel preferred, 70½.

### Wool Market.

St. Louis, Mo., August 25.—Wool, steady.  
Territory and western medium, 71 @ 18; medium, 15 @ 17; fine, 15 @ 16.

### MARKET REPORT.

#### MONEY AND METAL.

New York, Aug. 25.—Money on call at 1½ @ 2 per cent. Prime mercantile paper 6 @ 6½ per cent. Silver, 36½.

New York, Aug. 25.—Lead, quiet, \$4.25. Copper, strong, \$13.75 @ \$14.00.

#### GRAIN.

Chicago, Aug. 25.—Close. Wheat, Sept., 79½; Dec., 80½ @ 81.  
Corn, Aug. 50½; Sept., 50½ @ 51.  
Oats, Aug. 34½ @ 35; Sept., 34½ @ 35.

PORK, LARD, RIBS.  
Pork, Sept., \$12.65; Oct., \$13.80.  
Lard, Sept., \$8.20; Oct., \$7.60.  
Ribs, Sept., \$7.67½; Oct., \$7.73½ @ 7.5.

#### STOCK.

Kansas City, Mo., Aug. 25.—Cattle, market steady.  
Native steers, \$4.10 @ \$5.40; Texas and Indian steers, \$2.40 @ \$3.90; Texas cows, \$1.65 @ \$2.75; native cows and heifers, \$1.50 @ \$4.50; Stockers and feeders, \$2.25 @ \$4.45; bulls, \$2.10 @ \$3.55; calves, \$3.50 @ \$5.55; western steers, \$3.50 @ \$4.90; western cows, \$1.80 @ \$3.51.  
Sheep, market steady.  
Muttons, \$2.60 @ \$4.25; lambs, \$3.00 @ \$5.40; Range weathers, \$2.50 @ \$4.15; Ewes, \$2.50 @ \$4.00.

Chicago, Aug. 25.—Cattle, market steady.  
Good to prime steers, \$5.25 @ \$5.90; poor to medium, \$4.00 @ \$5.15; stockers and feeders, \$2.50 @ \$4.30; cows \$1.50 @ \$5.60; heifers, \$2.25 @ \$4.85; canners, \$1.80 @ \$2.75; bulls, \$2.00 @ \$4.40; calves, \$3.00 @ \$6.75; Texas fed steers, \$3.00 @ \$4.65; western steers, \$3.25 @ \$4.75.

Sheep, market slow.  
Good to choice wethers, \$3.00 @ \$3.60; fair to choice mixed, \$2.25 @ \$3.00; western sheep, \$2.75 @ \$3.55; native lambs, \$3.50 @ \$5.60; western lambs, \$4.00 @ \$5.05.

### BOSTON WOOL MARKET.

Boston, Mass., Aug. 25.—The wool market is quiet but prices are firm. Territory wools have been in fair movement. Fine staple territories are quoted at 55, fine at 53 @ 55, fine medium at 50, and medium at 45 @ 47.

### U. S. Weather Bureau Notes.

Forecast for New Mexico: Partly cloudy tonight and Wednesday with local showers and thunderstorms.

Yesterday the thermometer registered as follows: Maximum temperature, 81 degrees, at 3:00 p. m.; minimum, 52 degrees, at 3:30 a. m. The mean temperature for the 24 hours was 66 degrees. Mean daily humidity, 49 per cent. Temperature at 6:00 a. m. today, 61 degrees.

# WANTS

### AND MISCELLANEOUS ADS.

ANY one desiring male help of any kind please notify Alan R. McCord, Secretary Capital City Bldg.

### For Sale.

A POSITIVE Bargain. The Santa Fe Planing Mill, cause of sale old age. Apply P. Hesch, Santa Fe.

FOR RENT—New piano for concerts, dances and special occasions. Apply Claire Hotel.

WANTED—BIDS for furnishing 40 cords of wood. For further information apply or address J. F. Wenborne, rear Catron Block.

FOR RENT—Furnished rooms with board, or suit of rooms for light housekeeping. Convenient and pleasant locality. Address P. O. Box 223, or Phone 89.

### THE BON-TON

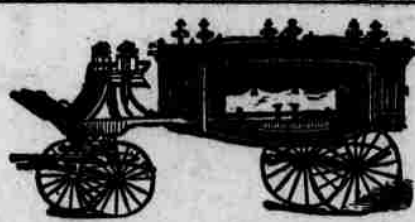
Is the only first-class Short Order Restaurant in the city where anything in the eating line can be found. Manager Conway personally looks for your needs. Call, you will be treated right.

WANTED—Several persons of character and good reputation in each state (one in this county required) to represent and advertise old established wealthy business house of solid financial standing. Salary \$21 weekly with expenses additional, all payable in cash direct each Wednesday from head office. Horse and carriage furnished when necessary. References. Enclose self-addressed envelope. Colonial, Caxton Building, Chicago.

## BOOKS AND STATIONERY,

Periodicals, School Books, School Supplies, Stationery Sundries, Etc.  
CATHOLIC CATECHISMS AND PRAYER BOOKS IN SPANISH.  
SPANISH NOVELS A SPECIALTY.

Books not in stock ordered at eastern prices; subscriptions taken for all periodicals.  
JACOB WELTMER



## SCIENTIFIC EMBALMING

At Our Up-to-Date  
Undertaking Parlors

The Latest Scientific Methods of Embalming are Employed. Calls Answered from the Parlors Day or Night or by DOROTEO SENA, Agua Fria Road. Our Parlors consist of a Nicely and Appropriately Fitted Up Suite at No. 112 Lincoln Avenue, West Side Plaza, Santa Fe, New Mexico.

DUDROW, KENNEDY & TOWNSEND, Props.

FRED MONTENIE

Scientific Embalmer and Funeral Director.

## GOLD'S OLD CURIOSITY SHOP

ABE GOLD, Proprietor. ESTABLISHED 1869. JAKE GOLD, Manager.

Indian and Mexican Curios. Free Museum.

The largest and best stock of Indian Baskets, Blankets, Pottery, Etc., in the country.

Mexican Drawn Work a Specialty.

Don't fail to call and see us when in the city. Send for a Catalogue.

311-317 San Francisco Street, Corner Burro Alley, Santa Fe, New Mexico.

