

8-14-1903

Santa Fe New Mexican, 08-14-1903

New Mexican Printing Company

Follow this and additional works at: https://digitalrepository.unm.edu/sfnm_news

Recommended Citation

New Mexican Printing Company. "Santa Fe New Mexican, 08-14-1903." (1903). https://digitalrepository.unm.edu/sfnm_news/1729

This Newspaper is brought to you for free and open access by the New Mexico Historical Newspapers at UNM Digital Repository. It has been accepted for inclusion in Santa Fe New Mexican, 1883-1913 by an authorized administrator of UNM Digital Repository. For more information, please contact disc@unm.edu.

SANTA FE NEW MEXICAN

VOL. 40.

SANTA FE, N. M., FRIDAY, AUGUST 14, 1903.

NO. 150.

THE LAST SPIKE HAS BEEN DRIVEN

About Two Hundred Spectators Watch Mayor Sparks Wield a Sledge and Listen to Eloquent Speeches.

The Santa Fe Central Railway Is Now a Reality and the Capital City Is at Last on a Main Line.

At 5:17 p. m. on August 13, 1903, the last spike on the Santa Fe Central Railway was driven between Kennedy and Gallisteo switch by Mayor Ishmael Sparks of the city of Santa Fe. It was a historic occasion for New Mexico and, it is hoped, an epoch-making event for Santa Fe. The ceremony was a very simple one, it was witnessed by less than 200 persons, yet, it is believed, it will have far reaching results. It was 2:30 o'clock yesterday afternoon when the special train, kindly put at the disposal of about fifty Santa Fe business men, officials and other citizens, left the improvised depot on the south side for Kennedy. The train consisted of 80-ton locomotive No. 55, a tank car, a flat car, on which seats had been placed and a large caboose, in which seats had also been placed and which held the refreshments that helped along the spirit of festivity. Unfortunately, General Manager W. S. Hopewell could not accompany the party as an attack of sciatic rheumatism, brought on by overwork and exposure, had incapacitated him. However, the Santa Fe Central Railway Company was well represented by its attorney, Hon. Charles F. Easley, Auditor Frank D. D. Knight, E. L. Critchlow, General Passenger and Freight Agent B. W. Robbins and his stenographer, Albert Knight, E. B. Field and a number of others of the office force, while at Kennedy, Chief Engineer A. G. Kennedy, Superintendent Harris and Land Agent Clark awaited the arrival of the special. Santa Fe was represented by Mayor Sparks and every member of the city council, Territorial Secretary J. W. Reynolds, ex-Governor L. B. Prince, Colonel George W. Knaebel, Colonel J. Franco Chaves, Major Fred Muller and about fifty business men, officials and other citizens. Albuquerque was represented by Land Commissioner A. A. Keen and Ernest Meyers, while M. T. Moriarty represented the settlement which bears his name.

Although the train sped over a skeleton track it moved very smoothly and made a number of spurts of speed that gave an indication that the time between Kennedy and Santa Fe will be much less than the time between Lamy and this city, although the distance is three and a half miles longer. No untoward incident broke the trip. Locomotives were changed near Vega Blanca, a switch engine taking the special to Gallisteo switch, where the track-laying machine was still at work when the party arrived. The process of track laying proved very interesting to the party. It was 5:15 p. m. when the last rail was laid and in twelve minutes more Mayor I. Sparks drove the silver spike presented by S. Spitz and ornamented with the colors of the Elks given by A. L. Morrison, Jr.

Colonel George W. Knaebel made the presentation of the spike to the Santa Fe Central Railway Company. He praised the enterprise of the men who furnished the sinews for building the road, who had asked no assistance, no subsidy. He told how Santa Fe had watched the undertaking from its very beginning, with hope and then with doubt and then with hope again, and then with great rejoicing as the work was nearing its completion. Hon. Charles F. Easley received the spike in the name of the company and gave assurance, having been authorized so to do by General Manager W. S. Hopewell, that the company would do everything in its power to further the interests and the prosperity of the city of Santa Fe. Alluding to what Colonel Knaebel had said in regard to the connection offered by the road with the great Rock Island system, he said that the Denver & Rio Grande Railroad was also a connection whose value cannot be over-estimated and that the new road furnishes a through line by way of Santa Fe between Denver and El Paso.

Mayor Sparks made a brief address in a similar strain and then took the spike and with three taps of the sledge hammer drove it into the proper place. He concluded his remarks after that, in promising the co-operation of the people of Santa Fe with the Santa Fe Central in every legitimate way.

Judge N. B. Laughlin was the next speaker. He referred to the fact that he had seen two other railroads come into Santa Fe and was present at the

ceremonies at Cerrillos when the Atchison, Topeka & Santa Fe reached that place. He spoke of the great importance of the Santa Fe Central Railway, giving Santa Fe connection not only with the great Rock Island system but with all the world.

Ex-Governor L. B. Prince was the last speaker and he reviewed the event of twenty-three years ago when the last spike was driven at Santa Fe in the Atchison, Topeka & Santa Fe line. He told how Governor Lew Wallace and General Hatch with great dignity lifted the hammer and each missed the spike by six inches. Ex-Governor Prince was chief justice at that time and was more successful in striking his spike and so was the chairman of the board of county commissioners who drove the fourth spike. Judge Prince eloquently emphasized what is of great importance even than the new railroad—the spirit in which it came, the desire of its promoters to build up Santa Fe. He prophesied a glorious future for the city.

Each speaker was applauded. There were three ringing cheers for General Manager W. S. Hopewell, for Senator W. H. Andrews, for General Francis J. Torrance, for Senator Arthur Kennedy, for T. Lee Clark, for Chief Engineer A. G. Kennedy, for Superintendent Harris, for Mayor Sparks, for ex-Governor L. B. Prince, and for all the men and laborers who had taken part in the work of building the road.

It was an impressive scene. The sun was nearing the edge of the mountains in the west and sent its rays over the mesa, clothing it in gold. On the high embankment leading to the overhead crossing over the Atchison, Topeka & Santa Fe not quite 200 men and several ladies were grouped around Mayor Sparks who had just lifted the sledge to strike the last blow. On the bridge over the Santa Fe crossing stood the work train, with the track-laying machine which had just completed its work, while in the opposite direction through a deep cut were visible the yellow buildings of Kennedy. To the north shimmered the hoary peaks of the Santa Fe range and beyond them the Pecos range, while to the northwest were the gigantic Jemez and Cocheti ranges bright in the rays of the sinking sun. To the east was Lamy mountain, where rose columns of smoke from engines. Right below glistened the tracks of another great highway, the Atchison, Topeka & Santa Fe, upon which a freight train came speeding along at that moment and whose rumbling was suddenly broken by cheers, long and loud, and by the shrieking whistles of two locomotives. Nigh two hundred hats waved in the air and there were more cheers before the silence again resumed its customary abode in the hills around Gallisteo.

The homeward trip was broken by several humorous incidents. Frank D. D. Knight and C. G. Kaadt, who intended to leave Kennedy for the coal fields to take photographs for the railroad, discovered three miles out of Kennedy that the train was speeding towards Santa Fe instead of toward Kennedy. There were frantic efforts to stop the train which finally were answered and the two wayfarers stepped off with their luggage, a walk of three miles to Kennedy being ahead of them. However, the air was cool and had it not been for a mountain of luggage they had with them, the walk would have been quite enjoyable. There was singing and merry making, and those who did not take part scanned the scenery along the road or hallooed at the jack rabbits which were scared up by the hundreds by the locomotive. It was 7:15 p. m. when the train arrived at Santa Fe. It was a memorable occasion and those who took part in it will remember its incidents for many years to come.

While the 115 miles of track between Santa Fe and Kennedy are now completed, it will take some time yet before the road will be open to through traffic. The work of ballasting, surfacing and tamping which is well under way, will be pushed to completion at the rate of two and more miles a day and by September 1, and probably before that time, there will be through trains. The time table is in preparation and the two trains which will be put on each way between Santa Fe and Torrance have been named, the Colo-

rado mail and daily express leaving Torrance at 4 o'clock in the morning arriving here at 9:30 a. m. in time to make connection with the outgoing Atchison, Topeka & Santa Fe train to the east and the north. The Denver fast freight train will leave Torrance at 5 o'clock in the morning arriving at Santa Fe at noon. The Mexico and California mail and express will leave Santa Fe at 8 p. m. and the El Paso fast freight at 2 p. m.

STRIKERS ISSUE STATEMENT.

Cripple Creek Miners Say No Trouble Will Occur in That Camp.

Cripple Creek, Colo., Aug. 14.—The strike committee today issued the following statement:

"No notice will be paid by union men or others to the big bluff gotten out by the Mine Owners' association last night calling the men back to work on Monday morning. The statement of the suffering endured by the poor business men and themselves over this strike will not appeal very strongly to the miners, especially so after the action of the Business Men's association in refusing credit to men who have been trading with them and paying their bills promptly for years. The men who quit work did so for principle. The miners of this district are not boys. They know why they laid down their tools and why they quit. They will not go back to work till told to do so by the proper officials whom they have elected to manage this fight. Regarding the offer of protection for the men who desire to work, no protection will be necessary because miners are law-abiding men and no trouble is anticipated. Everything is quiet in the district, and no imported thugs are wanted, whose business is to create strife where none exists; and, furthermore, none will be tolerated. Proper officials, assisted by law-abiding citizens, will take care of these gentry should they appear."

GET LIFE SENTENCES.

The Assassination of James B. Marcum are Convicted of Murder.

Cynthiana, Ky., Aug. 14.—The jury in the case of Curtis Jett and Thomas White, charged with the assassination of James B. Marcum at Jackson, Ky., returned a verdict of guilty today and the judge fixed the punishment at life imprisonment. The verdict was returned at a time when few persons were in the court room. Jett received the verdict with coolness and indifference. White, who was apparently under a severe strain during the trial, flushed up and his eyes filled with tears. A appeal will be taken.

COLORADO STORM.

Streets Flooded, Telephone Wires Down, Residences Shattered.

Sterling, Colo., Aug. 14.—An electric storm swept over this place about midnight, doing considerable damage. The heaviest portion visited Sterling in the form of a waterspout, flooding the streets and filling cellars throughout the city. In West Sterling lightning struck and shattered the residence of E. Rock, but the occupants were uninjured. Thirty-four lines of the telephone system were rendered useless by the storm.

THE HUMBERT TRIAL.

Paris, Aug. 14.—The Humbert trial was continued today. A number of provincial creditors of the Humbert family testified to loans of many millions of francs. Their statements showed their credulity regarding Mme. Theresca's story of the Crawford inheritance.

KEARNY'S PORTRAIT

Mrs. Bascome Presents Picture of Distinguished Soldier to Historical Society.

AN INTERESTING EVENT

Colonel Chaves and Captain Abeyta Give Some Personal Recollections of the Famous General.

There was a representative gathering of Santa Fe people at the court house last night, the occasion being a special meeting of the New Mexico Historical society called for the purpose of receiving a picture of the late General Stephen Watts Kearny, who took formal possession of the territory of New Mexico in the name of the United States in 1846. The portrait is in oil and was presented to the society by Mrs. Western Bascome of St. Louis, who is a daughter of the distinguished American general. The exercises were of a most interesting character and were much enjoyed. The presiding officer of the evening was ex-Governor L. Bradford Prince, president of the society. In his introductory address Governor Prince told of the object of the meeting and the aims of the society and spoke of the events of yesterday that have recently proved of greatest moment to the people of Santa Fe. "It would be hard to imagine two more widely different events than those of today, one is so commercial in its character and the other of a most esthetic nature. I refer to the completion of the Santa Fe Central and the driving of the last spike at Kennedy this afternoon and this meeting this evening. Yet one can readily see how closely they are allied and how dependent the one is on the other, for the one has made the other possible." After a few words as to the object of the society the speaker introduced Mrs. Bascome who presented the portrait to the society. Mrs. Bascome said:

"Mr. President, Members of the Historical Society of New Mexico, State Regent and Sunshine Chapter of the Daughters of the American Revolution: "It gives me unspeakable pleasure to be present with you today and to witness the signal honor paid by you to my father, Major-General Stephen Watts Kearny, in so suitably marking the spot where he proclaimed the annexation of New Mexico to the United States on August 19, 1846.

"Though a man of war from his early manhood, having resigned from King's college New York, (now Columbia college) at the age of 17, when he was appointed a lieutenant in the Thirteenth Infantry, and participated in the war of 1812; and continued with the army until he was appointed brigadier general in command of the army of the west, marching it across the continent, under almost insurmountable difficulties, in provisioning and watering his army.

"When he appeared before Santa Fe, he proclaimed to the citizens, 'Peace without the sword'; and his reasoning was so convincing that they accepted it, being assured thereby of better protection from the Indians and a larger liberty under the laws of the United States than they had experienced under Mexican rule.

"After assuming the government of

Continued on Page 8.

CROWDS OF VISITORS.

Thousands of People Flocking Into San Francisco From All Parts of the Country.

San Francisco, Aug. 14.—Delegates to the national encampment of the G. A. R. are pouring into San Francisco from all parts of the country and from every indication the steady stream of humanity will set in this direction for the next ten days, packing the city with a larger number of visitors than ever attended any other event in the history of the city. Conservative estimates figure that fully 35,000 visitors will take part in the proceedings of the encampment next week.

NOT GIVEN CREDENCE.

Nothing Known in London About Prince Ching Using President's Good Offices.

London, Aug. 14.—Neither at the American nor at other interested embassies is anything known regarding the statement made in last night's dispatch from Yokohama that Prince Ching had secured Russia's consent to use President Roosevelt's good offices in connection with the Manchurian difficulty. Well informed Russians here do not understand that there is any question pending with China in which the good offices of President Roosevelt are needed or have been offered.

HIGH WINDS ON THE GULF.

Weather Bureau at New Orleans Advises Vessels to Remain in Port.

New Orleans, La., Aug. 14.—The weather bureau issued the following this morning: "Advisory warning to all west gulf ports, 9:40 a. m.—The tropical disturbances are apparently central in the west gulf, with future course uncertain. The increasing northeast winds on the coast are considered dangerous for vessels to leave gulf ports."

COLOMBIA WANTS MORE MONEY.

Washington, D. C., Aug. 14.—Another cablegram has been received from Minister Beaupre, at Bogota, which states that no final action has yet been reached on the canal treaty. While the cablegram is not very definite, the impression at the state department is that one of the principal amendments to be acted upon is in regard to an increase in the amount of money to be paid by the United States to Colombia for the canal concession.

WHOLESALE MURDER HANGED IN LOUISIANA

New Orleans, La., Aug. 14.—A. E. Batson was hanged today at Lake Charles for the murder of six members of the Earl family in February, 1902, near Welsh. The crime was discovered when Batson, representing himself as Ward Earl, offered stock for sale that belonged to the Earls. He had been employed by them. He protested his innocence and was unmoved to the last.

PORT ANTONIO DAMAGED BY THE GREAT HURRICANE

Washington, D. C., Aug. 14.—The state department has received the following cablegram from Kingston, Jamaica, dated today, and signed "American Consul": "Port Antonio greatly damaged by the hurricane. Many dead and seriously injured are constantly reported at the consulate."

DISCUSS MOB LAW.

Chautauqua, N. Y., Aug. 14.—The discussion of mob law and lynching was continued here today by Chief Justice Loree of Delaware. His subject was, "The Relation of the Law to the Manifestation of the Mob Spirit."

WANT TO FIX FENCES

Senators and Congressman Are Opposed to Calling Extra Session for October.

EDITOR HEARST'S BOOM

Building Trades Council Unanimously Endorses Him for the Presidency.

Oyster Bay, Aug. 14.—Financial legislation and other work of the proposed extraordinary session of congress were discussed today by the president and his callers, who included Secretary Shaw, Senator Cullom and Comptroller of Currency Ridgely. Considerable opposition has developed to the idea of calling an extraordinary session in October. The point is made that many of the senators and representatives will be engaged during October in state campaigns and that it will be politically unwise for them to leave their states at such a time. It was announced today that no definite conclusion regarding the date of the extra session has been reached.

HEARST FOR PRESIDENT.

His Boom Is Launched by Unanimous Action of Building Trades Council.

Denver, Aug. 14.—The National Building Trades council in convention here today unanimously passed the resolutions endorsing William R. Hearst of New York for president of the United States. The resolutions were unfavorably reported from the committee on resolutions and on their presentation to the convention an earnest and spirited debate followed. When the vote was called the Hearst supporters led 28 to 19. The opponents of the resolution then withdrew their opposition and the action was unanimous.

TYPOS APPROPRIATE.

Will Spend \$2,500 or More for Organization Purposes in Philadelphia.

Washington, D. C., Aug. 14.—The International Typographical union today, on recommendation of the executive council, appropriated \$2,500 for organization purposes in Philadelphia and authorized the expenditure of \$2,500 more if needed. The proposition of the committee of laws to have published annually by local unions statistics relative to population, scales of prices, hours of labor, etc., was adopted.

DO NOT THINK THE

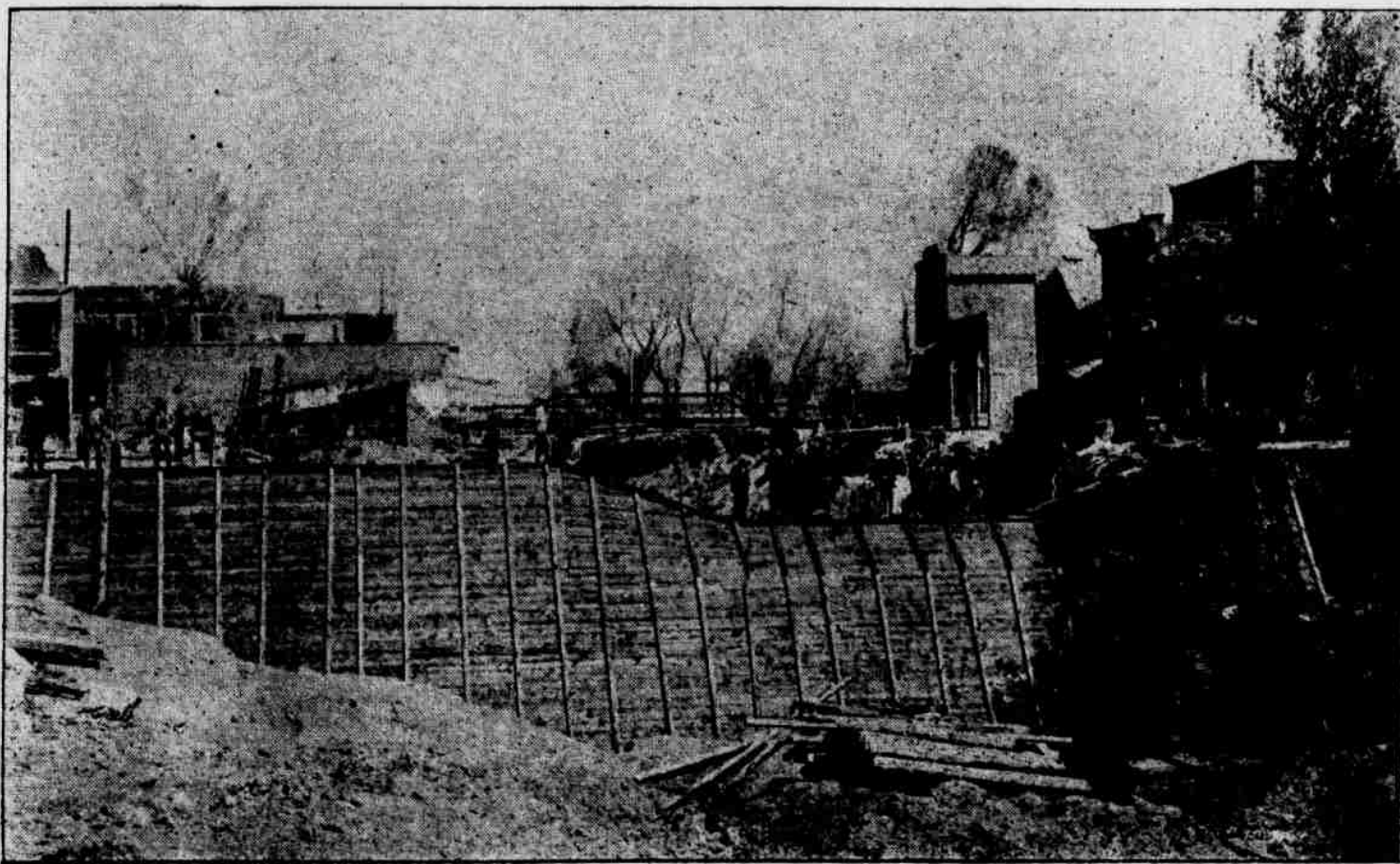
BATTLESHIP WILL SINK

Bar Harbor, Aug. 14.—The United States battleship Massachusetts, which was seriously damaged by striking Egg Rock Wednesday, continues to settle, but the officers in charge say the change is so slight that it gives no ground for fear that the ship will fill and sink. She will probably be sent to the Brooklyn navy yard.

JEFFRIES IS THE FAVORITE.

San Francisco, Calif., Aug. 14.—The betting on the Jeffries-Corbett fight is very light. Jeffries still rules as the favorite at two to one. The Corbett people expect to see the odds go to ten to four. Both men will enter the ring in fine condition and confident of winning.

Try a New Mexican want "ad."



Dam at Silver City Partially Destroyed by Recent Flood.

SANTA FE NEW MEXICAN

THE NEW MEXICAN PRINTING COMPANY, PUBLISHERS

MAX. FROST, Editor
PAUL A. F. WALTER, Associate Editor
CHARLES M. STAUFFER, Manager

Entered as Second Class matter at the Santa Fe Postoffice.

The New Mexican is the oldest newspaper in New Mexico. It is sent to every postoffice in the Territory, and has a large and growing circulation among the intelligent and progressive people of the Southwest.

RATES OF SUBSCRIPTION.	
Daily, per week, by carrier.....	25
Daily, per month, by carrier.....	\$1.00
Daily, per month, by mail.....	75
Daily, six months, by mail.....	4.00
Daily, one year, by mail.....	7.50
Daily, three months, by mail.....	2.00
Weekly, per month.....	25
Weekly, per quarter.....	75
Weekly, six months.....	1.00
Weekly, per year.....	2.00



The Capital City of New Mexico is all right.

Hurrah for the Santa Fe Central Railway! Help the "High Line" road along and assist in making it what it should be, one of the principal railroad lines in the Sunshine territory.

The western railway companies are storing coal to prevent a coal famine as far as they are concerned this winter. It seems strange that a coal famine should be anticipated at all when it is remembered that the coal deposits of New Mexico alone if they were all worked could supply the United States with all the coal it needs for a considerable period.

The vacancy in the office of associate justice of the supreme court of the territory should be filled by the national administration at once. There is much work to be done and the people of the fifth judicial district in which the appointee will officiate want a judge at once as the cause of justice will not be benefited by the vacancy being left open.

The Socorro El Republicano commends the course of this paper in making a specialty of mining news and comments editorially thereon as follows: "The Daily New Mexican is the best paper in the territory for general mining news, and is growing in favor with the mining element of our territory, this shows that the New Mexican recognizes at its full value, an industry that is only second to the sheep industry of this great domain, mining in the past twenty years stands at the head of all industries as a wage distributor, which is the nucleus of consumption which in turn makes markets for the producers, mining was the foundation upon which the states of California, Idaho, Montana, Colorado, Utah, Michigan, Arizona and other states were built, and the one that will build New Mexico, it is mining that builds railroads in the west."

The last spike has been driven on the Santa Fe Central and the city of Santa Fe is now connected by rail with another great railway system, namely the Chicago, Rock Island & Pacific Railroad. The business men and property owners of this city should take advantage of this fact. By liberal, wise, progressive and up-to-date policies and business conduct on their part they can double the population of this city within five years. This chance may not come again in a decade. The tide is on and they should take advantage of it. The New Mexican in its various editions, daily, weekly and Spanish, will aid them in every possible way, in season and out of season, and will never rest. Progress is one of its mottoes and this word should also be the watchword and guide of every patriot-property owner, business man and citizen of this town.

There are many ways in which water is king in New Mexico and one of these, which, however, is not at all enjoyed by the people of the particular community where it takes place, is a flood of the kind which on Tuesday and Wednesday last so very disastrously and seriously affected Santa Fe's sister city, namely Silver City, the county seat of Grant county. The town has been very unfortunate in the matter of floods and since its settlement and starting thirty years ago it has had more than its share of great catastrophes of this kind. In these black surroundings of misfortune, however, have stood forth bright and shining the perseverance, energy and pluck of the citizens of the town who, after each flood, have repaired and rebuilt, strengthened and fortified against similar occurrences. They have had a very hard fight against natural conditions which, judging by past events, are very hard to overcome, but they are there and will remain so. In this they deserve the greatest of credit and should have it as they certainly have the sympathy of all good citizens of the territory in their misfortune.

Try a New Mexican want "ad."

THE GREATER NEW MEXICAN.

The Socorro Chieftain published at the county seat of the great and rich county of Socorro, in its last issue makes the following editorial remarks concerning the enlargement and improvement of the Daily New Mexican under the above caption: "The Santa Fe New Mexican appeared a week ago enlarged to double its former size and much improved in other respects. No other paper of the territory can be dignified as a competitor of the New Mexican in the giving of territorial news, nor does any lead it for general news. Colonel Frost is now entitled to the satisfaction of feeling that he is publishing a paper of metropolitan pretensions and competitors will find him hereafter, as they have found him heretofore, a hard man to beat. The best that can be wished for the New Mexican is that it may receive the liberal patronage that it merits."

PRESIDENT ROOSEVELT AND IRRIGATION.

No matter whether he be a Republican or Democrat there is not a resident of the western states and territories whose thanks are not due to President Roosevelt for the interest he has taken and the work he has done to forward the matter of irrigation in the arid regions of this country. For years the people of the arid west have tried to secure aid from the government to push these projected enterprises but have always met with opposition or with half-hearted, lukewarm support. President Cleveland, who had hardly been outside the confines of his native state when he was first elected president, was too broad between the shoulders and too narrow between the eyes to extend his vision west of the Allegheny mountains; President Harrison, although much wider and broader in his views and his ideas, made a trip to the Pacific coast, and instead of seeing the great possibilities of irrigation, thanked heaven when he had reached eastern Nebraska that he was in a land where God furnished rain for the growing crops. Had President McKinley lived he would undoubtedly have aided the west to secure government aid for these great enterprises, but it was left to President Roosevelt to actively push the matter of government irrigation projects. The President has devoted much time, attention and study to the subject of irrigation, and it is mainly through his work that two great government enterprises are now under way—the Gunnison tunnel in Colorado and the Tonto reservoir in Arizona.

WHY BORROW MONEY?

The sum of about \$10,000 is standing to the credit of the College of Agriculture and Mechanic Arts at Mesilla Park in the territorial treasury. About \$7,000 of this sum was obtained from the sale of lands belonging to the institution and \$2,800 was placed there by order of the first judicial district court made in the matter of the petition of the board of regents of the college, for a mandamus commanding the territorial treasurer to transfer certain sinking funds to the fund for the maintenance of the college. In October coming several thousand dollars will be collected by the territorial land board, which will also go to the credit of the college on account of more sales of its lands made by the board. By January 1, 1904, it is estimated that the entire amount to the credit of the college and which can be used for permanent improvements in the shape of buildings, will be \$15,000. This sum certainly ought to be sufficient to construct the larger part of the buildings claimed to be absolutely necessary by the college authorities for its proper maintenance and operation, as well as for housing and taking care of the increased number of students. Why the college authorities do not take advantage of this state of affairs is not exactly clear. The sum of \$10,000 in the territorial treasury subject to a requisition from the board of regents, is available and has been for several months. This being the case it would certainly not be proper to borrow money and pay interest on necessary funds for the construction of the proposed girls' dormitory for which plans have been adopted and for other buildings that are to be constructed this winter. In fact it would be highly improper and detrimental to the public interests. The funds now in the territorial treasury to the credit of the college should be used to pay for the buildings in contemplation and when these funds are exhausted and more money is necessary for the purpose named above, then will be the time to provide more money.

THE DEATH PENALTY.

A little thing sometimes results in death. Thus a mere scratch, insignificant cuts or puny boils have paid the death penalty. It is wise to have Bucklen's Arnica Salve ever handy. It's the best salve on earth and will prevent fatality, when burns, sores, ulcers and piles threaten. Only 25c at Fischer Drug Co.

STOP THAT COUGH!

When a cough, a tickling or an irritation in the throat makes you feel uncomfortable, take Ballard's Horehound Syrup. Don't wait until the disease has gone beyond control. Mr. and Mrs. J. A. Anderson, 354 West 5th St., Salt Lake City, Utah, writes: "We think Ballard's Horehound Syrup the best medicine for coughs and colds. We have used it for several years; it always gives immediate relief, is very pleasant and gives perfect satisfaction." 25c, 50c, \$1.00 at Fischer Drug Co.

D. & R. G. CHANGE OF TIME.

Until further notice the Denver & Rio Grande train arriving here in the evening will be run as an extra from Espanola to Santa Fe, arriving at Santa Fe about 5 p. m.

J. B. DAVIS, Agent.

DYSENTERY CURED WITHOUT THE AID OF A DOCTOR.

"I am just up from a hard spell of the flux" (dysentery) says Mr. T. A. Pinner, a well known merchant of Drummond, Tenn. "I used one small bottle of Chamberlain's Colic, Cholera and Diarrhoea Remedy and was cured without having a doctor. I consider it the best cholera medicine in the world." There is no need of employing a doctor when this remedy is used, for no doctor can prescribe a better medicine for bowel complaint in any form either for children or adults. It never fails and is pleasant to take. For sale by all druggists.

Summer Tourist Rates to Colorado Points

On sale daily via the Santa Fe from June 5 to October 15, good for return passage until October 31, to Denver and return \$22.55, Pueblo and return \$17.55, Colorado Springs and return \$19.55, Glenwood Springs and return \$28.65. Stop-overs allowed at and north of Pueblo. For particulars call on any agent of the Santa Fe. H. S. LUTZ, Agent, Santa Fe, N. M.

SOVEREIGN GRAND LODGE, I. O. O. F.

Baltimore, Md., Sept. 21st 28th. For this occasion the Santa Fe will sell tickets to Baltimore and return at a rate of \$35.50 for the round trip, dates of sale from New Mexico points Sept. 16th, 17th and 18th, good for return passage until Oct. 3d, 1903.

W. J. BLACK, G. P. A., Topeka, Kans.
H. S. LUTZ, Agent, Santa Fe, N. M.

Mrs. Mollie Allen of South Fork, Ky., says she has prevented attacks of cholera morbus by taking Chamberlain's Stomach and Liver Tablets when she felt an attack coming on. Such attacks are usually caused by indigestion and these tablets are just what is needed to cleanse the stomach and ward off the approaching attack. Attacks of bilious colic may be prevented in the same way. For sale by all druggists.

New Mexican want and miscellaneous ads always bring good results.

LOW RATES

From June 5 to October 15 the Denver and Rio Grande Railroad will sell summer excursion tickets to points named at the following low rates: Santa Fe to Pueblo and return, \$17.55; Santa Fe to Colorado Springs and return \$19.55; Santa Fe to Denver and return \$22.55; Santa Fe to Glenwood Springs and return (via Salida and Leadville) \$28.65. Final return limit Oct. 31st, 1903. At all points except Glenwood Springs a fee of 25 cents is charged when tickets are executed for return passage. Stop overs allowed north of Pueblo and stop overs allowed west and south of Pueblo either direction, for parties desiring to make the following side trips at one fare for the round trip, viz: From Salida to points between Gunnison and Cimarron; from Alamosa to points on Creede Branch; from Antonito to Pagosa Springs. For any further information, sleeping car reservations etc. call on or address J. B. DAVIS, Agent.

"The Grand Canon of Arizona," a superbly illustrated volume of 124 pages. Fifty cents a copy. Apply to H. S. Lutz, city agent of the Atchison, Topeka and Santa Fe Railway in the Catron Block.

Justice of the peace blanks, in English and in Spanish, for sale in large or small quantities by the New Mexican Printing Company.



TIME TABLE.

(Effective June 4, 1903.)

No. 720 leaves Santa Fe at 9:40 a. m. to connect with No. 2 east bound, with connection from El Paso and Southern California, returning, arrive at Santa Fe at 11:50 a. m.

No. 722 leaves Santa Fe at 3:30 p. m., to connect with No. 2, west bound, for Southern California, returning arrive at Santa Fe at 5:35 p. m.

No. 724 leaves Santa Fe at 7:10 p. m., to connect with No. 7, westbound for San Francisco and Northern California, returning, arrive at Santa Fe at 9:30 p. m.

No. 726 leaves Santa Fe at 9:35 p. m., to connect with No. 8, east bound, from San Francisco and Northern California, returning, arrive at Santa Fe at 11:45 p. m.

THE CALIFORNIA LIMITED.

Now twice a week between Chicago, Los Angeles and San Francisco. This train leaves Lamy, westbound, at 8:40 a. m., Monday and Thursday. Eastbound, at 2:02 a. m., Wednesday and Saturday. No connection with these trains from Santa Fe, except that passengers arriving on No. 3, west bound, can reach Santa Fe at 11:50 a. m. on No. 2's connection.

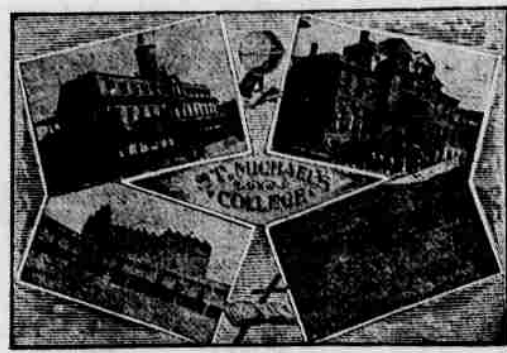
All of above trains run through solid from Chicago to California and carry through Pullman and tourist sleepers except California Limited, which carries Standard Sleepers only.

Through sleeping car reservation arranged for on application.

City Ticket Office: CATRON BLOCK EAST SIDE PLAZA H. S. LUTZ, AGENT.

ST. MICHAEL'S COLLEGE.

Santa Fe, New Mexico.



THE 45TH YEAR BEGINS SEP. 1, 1903.

The College is empowered by law to issue FIRST-CLASS TEACHERS' CERTIFICATES to its Graduates, which Certificates are to be honored by School Directors in the Territory of New Mexico.

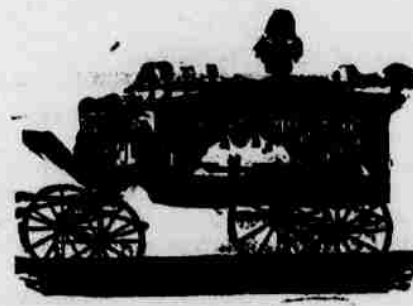
BRO. BOTULPH, President.

A. P. HOGLE

Undertaker and Funeral Director

GALISTEO STREET

Best of Reference Given as an EMBALMER. Night Calls
RESIDENCE 'PHONE 141.



REMINGTON

TYPEWRITERS

NEW MEXICAN PRINTING CO

Dealers,

Santa Fe, N. M.

Maxwell Grant.

FARMING LANDS UNDER IRRIGATION SYSTEM.

These farming lands with perpetual water rights are now being offered for sale in tracts of forty acres and upwards. Price of land with perpetual water rights from \$17 to \$35 per acre, according to location. Payments may be made in ten year installments. Alfalfa, grains, fruits of all kinds, and sugar beets grow to perfection.

GOLD MINES.

On this Grant, about forty miles west of Springer, N. M., are the gold mining districts of Elizabethtown and Baldy, where important mineral discoveries have lately been made. Claims on unlocated ground may be made under the mining regulations of the company, which are as favorable to the prospector as the U. S. government laws.

Near Raton, N. M., on this grant, are located the Coal Mines of the Raton Coal and Coke Company, where employment may be found at good wages for any wishing to work during the seasons that farming or prospecting can not be successfully done.

For particulars and advertising matter apply to

THE MAXWELL LAND GRANT CO

RATON, NEW MEXICO

"Manitou" Sarsaparilla
"Manitou" Mineral Water
"Manitou" Ginger Champagne...

Pure Crystal Ice

Delivered Free to All Parts of the City.

Satisfaction Guaranteed

GRANT RIVENBURG, Proprietor.

R. J. PALEN, President.

J. H. VAUGHN, Cashier.

HENRY L. WALDO, Vice President.

THE FIRST NATIONAL BANK

SANTA FE, NEW MEXICO

United States Designated Depository.

PROFESSIONAL CARDS

Attorneys at Law.

MAX. FROST, Attorney at Law, Santa Fe, N. M.

GEO. W. KNAEBEL, Office in Griffin Block. Collections and searching titles a specialty.

EDWARD L. BARTLETT, Lawyer, Santa Fe, New Mexico. Office in the Capitol.

WILLIAM MCKEAN, Attorney-at-Law. Practice in all the Courts. Taos, N. M.

W. J. McPHERSON, Attorney at law. Practices in all the courts in the territory. Santa Fe, New Mexico.

WILLIAM H. H. LLEWELLYN, Attorney-at-Law, Las Cruces, New Mexico. District attorney for Dona Ana, Otero, Grant, Luna and Sierra Counties, Third Judicial District.

CHAS. F. EASLEY, (Late Surveyor General.) Attorney at law, Santa Fe, N. M. Land and mining business a specialty.

E. C. ABBOTT, Attorney-at-Law.

Practices in the district and supreme courts. Prompt and careful attention given to all business.

District attorney for the counties of Santa Fe, Rio Arriba, Taos and San Juan. Santa Fe, N. M.

EDWARD C. WADE, Attorney-at-Law.

Practices in all the courts. "Mining cases and mineral patents a specialty."

LAS CRUCES - - NEW MEXICO.

FRANK W. CLANCY, Attorney-at-Law.

(District Attorney 2d Judicial District.) Practices in the District Courts and the Supreme Court of the Territory, also before the United States Supreme Court in Washington.

ALBUQUERQUE - - NEW MEXICO.

A. B. RENEHAN, Attorney-at-Law.

Practices in the Supreme and District Court. Mining and Land Law a specialty. Rooms 8 and 9, Sena Building, Palace Avenue, Santa Fe, N. M.

OSTEOPATHY

DR. CHARLES A. WHEELON, Osteopath.

No. 103 Palace Avenue. Successfully treats acute and chronic diseases without drugs or medicines. No Charge for Consultation.

Hours: 9-12 m., 2-5 p. m.

DENTISTS

DR. C. N. LORD, Office, Kahn Block, over Spitz' Jewelry Store. South Side of Plaza.

C. O. HARRISON, D. D. S., Office: Over Fischer's Drug Store.

On the Plaza. (Successor to Dr. Manley.)

Civil Engineers & Surveyors

DAVID M. WHITE, Civil Engineer.

Designs and specifications for iron and stone bridges. Railroad, water works and irrigation engineering.

Office: Governor's Palace, Santa Fe, New Mexico.

JAY TURLEY, Civil Engineer and Surveyor. Irrigation Work a Specialty. U. S. Deputy Mineral Surveyor. Santa Fe, N. M.

Notary Public, Stenographer and Type writer. Translations

From Spanish into English and from English into Spanish carefully made. Office with U. S. Attorney for the Court of Private Land Claims, Federal Building. FRANCISCO DELGADO, Santa Fe, N. M.

Notice for Publication.

(Homestead Entry No. 1578.)

Land Office at Santa Fe, N. M., July 15, 1903. Notice is hereby given that the following named settler has filed notice of his intention to make final proof in support of his claim, and that said proof will be made before the register or receiver at Santa Fe, N. M., on August 26, 1903, viz: Piedad Madrid, for the NW 1/4, section 17, township 14 north, range 10 east. He names the following witnesses to prove his continuous residence upon and cultivation of said land, viz: Jose Leon Madrid, Cristoval Madrid of Gallardo, N. M., Feliciano Lobato, of Lamy, N. M., Santiago Madrid, of Pinos Wells, N. M.

Any person who desires to protest against the allowance of such proof, or who knows of any substantial reason, under the law and the regulations of the Interior Department, why such proof should not be allowed, will be given an opportunity at the above mentioned time and place to cross-examine the witnesses of said claimant, and to offer evidence in rebuttal of that submitted by claimant.

MANUEL R. OTERO, Register.

Loose leaf ledgers at the New Mexican Bindery.

When, Where and How to Do It

If you want to rent houses or rooms,

If you want to sell anything,

If you want to find any lost article,

ADVERTISE IN THE NEW MEXICAN

For forty years the Recognized Advertising Medium of

SANTA FE

1903	August	1903
Sun	Mon	Tues
1	2	3
4	5	6
7	8	9
10	11	12
13	14	15
16	17	18
19	20	21
22	23	24
25	26	27
28	29	30
31		

When you want a physic that is mild and gentle, easy to take and certain to act, always use Chamberlain's Stomach and Liver Tablets. For sale by all druggists.

SOCIETIES.

Masonic.

MONTEZUMA LODGE
No. 1, A. F. and A. M.
—Regular communication first Monday in each month at Masonic Hall at 7:30 p. m.
C. F. EASLEY, W. M.
F. P. CRICHTON, Secretary.

SANTA FE CHAPTER, No. 1, R. A. M.—Regular convocation second Monday in each month at Masonic Hall at 7:30 p. m.
MARCUS ELDODT, H. F. ARTHUR SELIGMAN, Secretary.

SANTA FE COMMANDERY
No. 1, K. T.—Regular convocation fourth Monday in each month at Masonic Hall at 7:30 p. m.
F. S. DAVIS, E. C. W. E. GRIFFIN, Recorder.

I. O. O. F.

SANTA FE LODGE No. 2, I. O. O. F.—meets every Friday evening in Odd Fellows' hall, San Francisco street. Visiting brothers welcome.
GEO. W. KNAEBEL, N. G.
A. P. HOGLE, Secretary.

CENTENNIAL ENCAMPMENT, No. 1, I. O. O. F.—Regular communication the second and fourth Tuesday of each month at Odd Fellows' hall. Visiting patriarchs welcome.
JOHN SEARS, Scribe.

MYRTLE REBEKAH LODGE, No. 1, I. O. O. F.—Regular meeting first and third Tuesday of each month at Odd Fellows' hall. Visiting brothers and sisters welcome.
SALLIE VANARSDALE, N. G.
LAURA DAVIS, Secretary.

A. O. U. W.

GOLDEN LODGE, No. 1, A. O. U. W.—meets every second and fourth Wednesdays at 8 p. m.
C. C. PIERCE, Master Workman.
JOHN C. SEARS, Recorder.

K. O. P.

SANTA FE LODGE, No. 2, K. O. P.—Regular meeting every Tuesday evening at 7:30 o'clock at Castle hall. Visiting knights give a cordial welcome.
J. S. CANDELARIO, C. C.
J. K. STAUFFER, K. R. S.

B. F. O. ELKS.

SANTA FE LODGE, No. 160, B. F. O. E.—holds its regular sessions on the second and fourth Wednesdays of each month. Visiting brothers are invited and welcome.
J. B. DAVIS, E. R. A. J. FISCHER, Secretary.

Diplomat Whiskey

"JUST RIGHT"

Sold at
THE CLAIRE BAR

MONEY TO LOAN!

At the Next Regular Meeting
The
MUTUAL BUILDING & LOAN ASSOCIATION
Of Santa Fe
Will Receive
BIDS FOR LOANS

H. N. WILLCOX,

Secretary.

Office: Catron block, Up Stairs

Santa Fe Filigree and Jewelry Mfg. Co.

GOLD and SILVER FILIGREE.

N. MONDRAGON, Mgr.
S. E. Corner Plaza, San Francisco St.

TERRITORIAL PICKINGS

ROOSEVELT COUNTY.

A Second Contract Let for an Artesian Well at Portales—Taking Pictures for the Bureau of Immigration.

E. E. Jesseph, a well driller of Oklahoma, has been awarded the second contract for the drilling of an artesian well at Portales. The contract calls for 1,000 feet or less at \$1 per foot and 50 cents additional per foot for every succeeding 100 feet. The necessary machinery will be shipped from Amarillo. The drilling is to commence next week. The well will be started with 3-8 inch casing.

Roosevelt county was visited last week by what the Portales Herald claims to have been the severest rain-storm since that section has been settled. It just poured and hailed for over three hours without interruption. Considerable damage was done to crops, especially vines.

The Pecos Valley & Northeastern Railway is building a fence along its right of way at Portales.

H. R. Stevens has contracted for delivery of 700 range horses for points contiguous to the St. Louis market.

Rev. Father Herbert, of the Catholic church at Roswell, is making efforts to establish a congregation at Portales.

Sterling, the infant son of Mr. and Mrs. P. W. Price, died at Portales last week.

Ell Benedict of Alva, Okla., and Mrs. Beatrice Snodgrass of Medicine Lodge, Kan., were married at Portales last week by Rev. M. D. Hill.

Frank Frost, the photographer of the Pecos Valley & Northeastern Railway, is taking photographs in the vicinity of Portales for the bureau of immigration to be used in a pamphlet descriptive of the resources of Roosevelt county.

The school population of Portales is 475, the same as that of Roswell six years ago.

There is a movement on foot at Portales to incorporate the town.

The Roosevelt County Teachers' Institute will convene at Portales next Monday. Professor F. G. Ellis assisted by Mrs. W. O. Oldham will conduct the institute.

At the home of Mr. and Mrs. Henderson at East Portales, Ernest Schweifling and Miss Grace Hawk, both of Portales, were married by Rev. M. D. Hill. Sheriff Odom went to Arizona to arrest C. T. Splawn on the charge of having sold cattle not belonging to him. Splawn was brought back to Portales but was discharged for lack of evidence.

The Portales school district has adopted a special levy of 5 mills for funds to build two new modern school houses. A balance of \$2,000 in the school treasury will be used so that work can be started immediately on the buildings, the balance to be refunded out of the proceeds of the levy. The contract to build an addition to the present school house has been given to Henderson & Cooper.

HERBINE

Herbine the bile milder fluid and thus helps the blood to flow; it affords prompt relief from biliousness, indigestion, sick and nervous headaches, and the over-indulgence in food and drink. Herbine acts quickly, a dose after meals will bring the patient into a good condition in a few days.

G. L. Caldwell, Agt. M. K. and T. R. R., Checotah, Ind. Ter., writes, April 18, 1903: "I was sick for over two years with enlargement of the liver and spleen. The doctors did me no good and I had given up all hope of being cured, when my druggist advised me to use Herbine. It has made me sound and well." Fifty cents at Fischer Drug Co.

LAND SCRIP.

By the use of so-called land script, title can be obtained to government land without cultivation or residence thereon. All you need to do is to give description and show the land to be of the proper kind; we do the rest. By reason of the exhaustion of the supply which has been quite limited the price is advancing. We have a small amount yet on hand to sell, that is fully guaranteed. We also deal in real estate, loans and investments.

HUGO SEABERG,

Springer, N. M.

PUTS AN END TO IT ALL.

A grievous wall oftentimes comes as a result of unbearable pain from overtaxed organs. Dizziness, backache, liver complaint and constipation. But thanks to Dr. King's New Life Pills they put an end to it all. They are gentle but thorough. Try them. Only 25c. Guaranteed by Fischer Drug Co.

END OF BITTER FIGHT.

"Two physicians had a long and stubborn fight with an abscess on my right lung," writes J. F. Hughes of Du Pont, Ga., "and gave me up. Every body thought my time had come. As a last resort, I tried Dr. King's New Discovery for Consumption. The benefit I received was striking and I was on my feet in a few days. Now I've entirely regained my health." It conquers all coughs, colds and throat and lung troubles. Guaranteed by Fischer Drug Co. Price 50c and \$1 Trial bottles free.

New Mexican want and miscellaneous ads always bring good results.

CHAVES COUNTY.

The Pecos Valley Apple Crop is Short This Year—Artesian Well for Hagerman.

The Pecos Valley apple crop this year will amount to 7,500 boxes or about ten carloads. This is only one-third of last year's crop.

J. J. Hagerman recently promised the people of Hagerman that if they bought \$2,000 worth of town lots he would use that money and as much more as was needed to drill for artesian water. The lots have been sold and work on the well is to begin as soon as the machinery can be shipped in.

AMERICAN BANKERS' ASSOCIATION.

San Francisco, Calif., Oct. 20-23, 1903. For this occasion the Santa Fe will issue tickets to San Francisco and Los Angeles and return at one fare for the round trip, Los Angeles, \$38.45, San Francisco \$43.05. Dates of sale October 9th to 18th, final return limit November 30th.

H. L. LUTZ,

Agent, Santa Fe, N. M.

BIDS FOR CONSTRUCTION OF UNION DEPOT.

Bids for the construction of a union depot for the Santa Fe Central Railway and the Denver & Rio Grande Railroad to be erected in the city of Santa Fe, in the Territory of New Mexico, will be received up to 12 o'clock noon on Tuesday, the 25th day of August, A. D. 1903, at the office of the chief engineer of the Santa Fe Central Railway Company in the Catron block, in the city of Santa Fe aforesaid, where they will be opened in the presence of the bidders. Plans and specifications can be seen and examined at the same office. A certified check of 15 per cent. of the amount of the bid accepted drawn to the order of the Pennsylvania Development Company, will be required from the successful bidder for the faithful performance of his contract. The company reserves the right to reject any and all bids.

Bids to be in sealed envelopes and endorsed "Proposals for Construction of Depot."

Office of W. S. Hopewell, General Manager, Santa Fe, N. M., August 4, 1903.

RHEUMATISM.

When pains or irritation exist on any part of the body, the application of Ballard's Snow Liniment gives prompt relief. E. W. Sullivan, Prop. Sullivan House, El Reno, O. T., writes, June 6, 1902: "I take pleasure in recommending Ballard's Snow Liniment to all who are afflicted with rheumatism. It is the only remedy I have found that gives immediate relief." 25c, 50c, \$1.00 at Fischer Drug Co.

TERRITORIAL FAIR.

Albuquerque, N. M., Oct. 12th to 17th, 1903. For this occasion the Santa Fe will sell greatly reduced rate tickets from all points in New Mexico and Colorado to Albuquerque and return. The rate from Santa Fe will be \$2.65 for the round trip. Dates of sale Oct. 11th to 10th, good for return passage until Oct. 19th.

H. S. LUTZ, Agent.

SUICIDE PREVENTED.

The startling announcement that a preventive of suicide had been discovered will interest many. A run down system, or despondency invariably precede suicide and something has been found that will prevent that condition which makes suicide likely. At the first thought of self destruction take Electric Bitters. It being a great tonic and nerve will strengthen the nerves and build up the system. It's also a great stomach, liver and kidney regulator. Only 50c. Satisfaction guaranteed by Fischer Drug Co.

Trans-Mississippi Commercial Congress, Seattle, Wash., August 18-20, 1903.

For the above occasion the Santa Fe will sell tickets to Seattle, Tacoma and Portland at a rate of \$48.75 for the round trip, dates of sale August 2nd to 15th, good for return until October 15th, stop-overs allowed. For particulars call on any agent of the Santa Fe.

H. S. LUTZ, Agent,

Santa Fe, N. M.

NOT OVER-WISE.

There is an old allegorical picture of a girl scared at a grass-hopper, but in the act of heedlessly treading on a snake. This is paralleled by the man who spends a large sum of money building a cyclone cellar, but neglecting to provide his family with a bottle of Chamberlain's Colic, Cholera and Diarrhoea Remedy as a safeguard against bowel complaints, whose victims outnumber those of cyclones a hundred to one. This remedy is everywhere recognized as the most prompt and reliable medicine in use for these diseases. For sale by all druggists.

It is an admitted fact that real estate, financial men and merchants all say that quickest and best results are obtained by advertising in the "New Mexican."

CURES SCIATICA.

Rev. W. L. Riley, L.L.D., Cuba, New York, writes: "After fifteen days of excruciating pain from sciatic rheumatism, under various treatments, I was induced to try Ballard's Snow Liniment; the first application giving me first relief and the second entire relief. I can give it unqualified recommendation." 25c, 50c, \$1.00 at Fischer Drug Co.

Cremo
The Cigar
They Smoke
in Cigarland
5c
The Largest Selling
Brand of Cigars
in the World
The Band is the
Smoker's Protection

MONEY'S DIGEST.

The New Mexican Printing Company has made arrangements with the publisher of Money's Digest of the New Mexico reports to sell same at the reduced price of \$0.50 delivered in any part of the territory. This price will hold good only for a limited time in order to reduce the stock so as to pay for the publishing of this book. This price is subject to withdrawal without notice, cash to accompany each order.

The New Mexican Printing Company employs superior workmen in its several departments. Consequently it turns out superior work and should receive the patronage of those desiring "something above the ordinary," at simply a consistent rate for the character of the work turned out.

Try a New Mexican want "ad."

Santa Fe Central Rail'y.

TIME TABLE

Effective Wednesday, June 24, 1903.

NORTH BOUND	Miles	SOUTH BOUND
7:00 a.m. Lv. Torrance	15	Ar. 6:00 p.m.
8:00 a.m. Lv. Blanca	15	Lv. 5:00 p.m.
8:30 a.m. Lv. Progresso	24	Lv. 4:30 p.m.
9:10 a.m. Lv. Willard	31	Lv. 3:50 p.m.
9:50 a.m. Lv. Spur No. 3	44	Lv. 3:10 p.m.
10:10 a.m. Lv. Estancia	47	Lv. 2:50 p.m.
10:50 a.m. Lv. Veintoseis	63	Lv. 2:10 p.m.
11:30 a.m. Ar. Moriarty	73	Lv. 1:30 p.m.

Connecting at Torrance, New Mexico, with the El Paso-Northeastern System for all points North and East, and South and West.

B. W. ROBBINS,

General Passenger Agent, Santa Fe, N. M.

W. S. HOPEWELL,

General Manager, Santa Fe, N. M.

D. & R. G. SYSTEM,

Santa Fe Branch.

Time Table No. 71.

(Effective Wednesday, April 1st 1903.)

EAST BOUND	Miles	WEST BOUND
9:00 a.m. Lv. Santa Fe, Ar.	6	6:30 p.m.
11:00 a.m. Lv. Espanola, Ar.	24	3:00 p.m.
1:00 p.m. Lv. Embudo, Ar.	35	1:05 p.m.
3:40 p.m. Lv. Las Piedras, Ar.	90	10:55 a.m.
6:35 p.m. Lv. Antonito, Ar.	125	7:25 a.m.
4:00 p.m. Lv. Alamosa, Ar.	155	6:10 a.m.
8:45 a.m. Lv. Pueblo, Ar.	287	1:37 a.m.
1:15 a.m. Ar. Denver	404	9:31 p.m.

Trains run daily except Sunday.

Connections with the main line and branches as follows:
At Antonio for Durango, Silverton and all points in the San Juan country.
At Alamosa (with standard gauge) for La Veta, Pueblo, Colorado Springs and Denver, also with narrow gauge for Monte Vista, Del Norte and Denver Creede and all points in the San Luis valley.

At Salda with main line (standard gauge) for all points east and west including Leadville and narrow gauge points between Salda and Grand Junction.

At Florence and Canon City for the gold camps of Cripple Creek and Victor.
At Pueblo, Colorado Springs and Denver with all Missouri river lines for all points east.

For further information address the undersigned.

Through passengers from Santa Fe in standard gauge sleepers from Alamosa can have berths reserved on application. J. B. DAVIS, Agent.

Santa Fe, N. M.

K. HOOPER, G. P. A.

Denver, Colo.

MINIMUM OF EXERTION
THEY GO TOGETHER IN A
Remington Typewriter
MAXIMUM OF EXECUTION
The Remington typewriter lasts longest. So does the Remington Operator.
Wicket, Seamans & Benedick, 327 Broadway, New York.
NEW MEXICAN PRINTING COMPANY, Dealers, Santa Fe, N. M.

Cheap Rates to New York.

The Mexican Central has recently placed on sale tickets to New York and return going via the Mexican Central to either Vera Cruz or Tampico; thence via the famous Ward Steamship Line to New York. The return will be by rail over any line to El Paso. The entire trip covering thousands of miles, can be made for \$122.50. A more delightful trip cannot be planned as stop over privileges are allowed and the tickets are good for one year from the date of sale. The trip includes the City of Mexico, the "Paris of America," Havana, Cuba, and its famous Moro Castle, Newport and a dozen of the largest cities of the United States. Further information can be secured by addressing W. S. Mead, C. R. Hudson, general passenger agent, or W. D. Murdock, assistant general passenger agent.

Justice of the Peace Dockets.

The New Mexican Printing Company has prepared civil and criminal dockets especially for the use of justices of the peace. They are especially ruled, with printed headings, in either Spanish or English, made of good record paper, strongly and durably bound with leather back and covers and canvas sides; have a full index in front and the fees of justices of the peace and constables printed in full on the first page. The pages are 10-1-2x16 inches. These books are made up in civil and criminal dockets, separate, of 320 pages each or with both civil and criminal bound in one book, 80 pages civil and 320 pages criminal. To introduce them they are offered at the following low prices:

Civil or criminal.....\$4.00
Combination civil and criminal 5.00..
For 45 cents additional for a single docket or 55 cents additional for a combination docket, they will be sent by mail or prepaid express. Cash in full must accompany order. State plainly whether English or Spanish printed heading is wanted. Address
NEW MEXICAN PRINTING CO.,

A small gasoline engine, new, for sale by the New Mexican Printing company. Call or write and get price.

Don't Forget That

THE

El Paso-Northeastern System

IS
The Kansas City Line
The Chicago Line
The Denver Line
The St. Louis Line
The Memphis Line
and
THE WAY TO CLOUDCROFT

Fast Time and Excellent Connections or all points North, Northwest, Northeast, East and Southeast.

Standard and Tourist Sleepers, Free Chair Cars and Coaches on All Trains
Dining Car Service Unexcelled.

Call on agents for particulars, or address,
E. N. BROWN,
G. P. A., E. P. R. I. Route,
El Paso, Texas.

Printing of every kind that can be done in any city.

BOOKS, CATALOGUES, CARDS, BADGES, PAMPHLETS, PRICE LISTS, LAW BRIEFS, SOCIETY PRINTING AND COMMERCIAL WORK RECEIVE SPECIAL AND PROMPT ATTENTION FROM

The New Mexican Printing Company

We Have Facilities for Handling the Largest and Most Difficult Class of Work.

ENGRAVINGS AND ILLUSTRATIONS FURNISHED

Mail Orders Receive Prompt and Careful Attention From Us.



SALMON & ABUSELMAN

WHOLESALE AND RETAIL DEALERS IN

Dry-Goods AND Notions

WE are the acknowledged headquarters for House Furnishing Goods, including Carpets of all grades and Rugs of every description.

The largest line of Linoleums, among which will be found the celebrated special inlaid Potter grade. We guarantee buyers to compete with Eastern houses.

Our Tailor-Made suits for ladies and gentlemen speak for themselves. Fit and workmanship guaranteed. Give us a trial on your next suit and be pleased.

We have made a slash of fifteen per cent on every thing in our Wash Dress Goods Department.

REMEMBER—Give us a call on carpets, especially fine shades and figures for fall trade.

We will be pleased to "show you."

PHONE 108. SAN FRANCISCO STREET. P. O. BOX 255.

OUR CANDIES ARE ALWAYS FRESH

If you like good, fresh candy, buy it of us. We get Allegritti's Candies by express in small quantities, insuring their being fresh at all times.

We also carry Gunther's Chocolates and Bon-Bons. Always Fresh and Pure. A Trial will convince you.

FISCHER DRUG CO., 230 SAN FRANCISCO ST.

A. F. SPIEGELBERG

226 San Francisco St., South Side of Plaza.

Indian and Mexican Wares and Curios

Blankets, Baskets, Pottery, Rag, Wax, Feather and Linen Drawn Work. Opals, Turquoises, Garnets and Other Gems.

SPECIALTY

To have the best of everything in the line.

THE OXFORD CLUB

J. E. LACOME, Prop.

The Most Popular Place of Entertainment in City of Santa Fe.

Everything Up-to-Date. The Finest Brands of Wines and Liquors. The Best Imported and Domestic Cigars. Luxurious Club Rooms. A Cordial Invitation and Courteous Treatment Extended to Everybody. Drop in and See for Yourself.

San Francisco Street, Santa Fe, N. M.

W. A. MCKENZIE

HARDWARE

THE GREAT MAJESTIC



THE GREAT MAJESTIC

Screen Doors and Window Screens. All Sizes, Ice Chests, Refrigerators, Ice Cream Freezers and Winter to Sell Them.

TINNING & PLUMBING

A VIRGIN TERRITORY

The Completion of the Santa Fe Central Opens a Large and Rich Field.

With the driving of the last spike at Kennedy yesterday a new vista is opened for Santa Fe and the Ancient City is no longer on the side track but is now a main-line town. The Santa Fe Central is destined to become a connecting link of the greatest importance in the great chain of railways that stretch across the continent and there is no reason why Santa Fe should prove the stopping off place in the long journey from the Atlantic to the Pacific. And it is most likely that much of this tourist travel will be diverted to Santa Fe if the proper spirit is shown.

But not only is the tourist travel to be borne in mind and the great amount of revenue that such travel always brings to any popular resort. There is another side to the question that is worthy of the most careful thought of the people of Santa Fe and particularly of the merchants of the city. This new road has opened an entirely virgin field for the commercial interests of Santa Fe and trade that has heretofore gone to Albuquerque and Las Vegas can to a marked degree be secured to this city. A year ago the country between this point and Torrance was a country practically unknown to all save the stockmen. And while at that time there were many hundred thousand sheep, cattle and horses grazing along the route of the new road, yet the benefit that Santa Fe derived was really nothing as these products were marketed in Albuquerque and Las Vegas. Now the whole face of the country has in a measure been transformed and the lands along the line are being taken up by settlers and town sites are being laid out. There are a number of enterprising little stations that have sprung into existence within the past few months and among them are to be named Moriarty, Estancia, Willard, Progresso, and Torrance. These settlers are of the progressive type and they are determined to find a profitable market for the products of their ranches, their farms and their varied industries. And Santa Fe has an opportunity to attract the trade from this rich agricultural region, and not only agricultural, for some of the richest opportunities for mining industries are offered along the route of this new road and the country tributary to it. Santa Fe should not let this chance slip from her grasp but should at once take steps to capture it and make the Ancient City the metropolis of not only a new country, but of one of the richest that has ever been developed.

ABRAHAM GOLD DEAD

End of the Eventful Life of a Well-Known Santa Fe Merchant.

Abraham Gold, for many years one of the most prominent figures in Santa Fe affairs, died at his residence on San Francisco street at 5:30 o'clock this morning after a lingering illness. The immediate cause of death was Bright's disease. Mr. Gold was 56 years of age, and came to Santa Fe over forty years ago, succeeding his father in business in this city. His father was the late Louis Gold and one of the pioneer merchants of this city. Mr. Gold is survived by a widow, Mrs. Mary Gold, and a brother, Jacob, who reside in this city, and two sisters, Mrs. F. MacFarland of St. Louis and Mrs. Morris Greenwald of New York.

"Uncle Abe," as he was familiarly and affectionately called by many, was a man of sterling qualities and his friends were numbered by the thousands throughout the west. He was the owner of the "Old Curiosity Shop" on San Francisco street, which his father established in 1862. Mr. Gold was a member of the Benevolent and Protective Order of Elks, the Independent Order of Odd Fellows and the Knights of Pythias.

The funeral will be held at the residence at 2 o'clock Sunday afternoon. Rabbi Kaplan of Albuquerque has been invited to conduct the services and if he can come will do so. After the special religious services are concluded the Santa Fe Lodge of Elks will perform the rites. The funeral will be under the direction of Dudrow, Kennedy & Townsend, undertakers.

ATTEND THE MEETING.

Matters of Vital Interest Will Come Before Board of Trade.

The board of trade meeting at the court house this evening is a public one to which everyone is invited. The Woman's board of trade has accepted an invitation to be present and ladies as well as gentlemen will be welcome. The object is specially to draw attention to the various ways in which every citizen can assist in the growth and prosperity of Santa Fe and aid in the development to which the coming of the Santa Fe Central Railway has given new impetus. People are apt to overlook what can be done by individual effort. The opening address will outline all that is to be hoped for and worked for in the future of Santa Fe. The representatives of the Santa Fe Central Railway, of the Sunmount and Tent City project, of the Pecos Electric Power Company, and other enterprises will speak of them. The whole affair is intended as the inauguration of active efforts toward the progress and upbuilding of the city.

PERSONAL MENTION

C. L. Pollard, of the mercantile firm of Biggs & Pollard, is here attending to business for his firm.

Ernest Meyers and A. Slinger, commercial men of Albuquerque, are today interviewing Santa Fe merchants.

Judge Henry L. Waldo, who spent yesterday in the city attending to legal business, returned last night to Las Vegas.

Mrs. Sherwood of Chicago, Ill., who has been the guest of Mr. and Mrs. A. C. Ireland, left this morning for her eastern home.

Sheriff Alexander Read of Rio Arriba county was among the passengers from the north last night. He is here on official business.

George B. Brady, president of the Truchas Lumber Company, is in town looking after business affairs in connection with his company.

W. M. Woody of Glen Woody, Rio Arriba county, manager of the Glen Woody Mining Company, is in town attending to business today.

Mr. and Mrs. T. B. Ward left at 7:10 yesterday evening for Los Angeles, Cal., to visit Mr. Ward's brother. They expect to be absent about two weeks.

Mrs. S. C. Clark and Mrs. Gus Olsen are visitors in town. The ladies have placed a daughter of Mrs. Olsen as a pupil in the Loretto academy here.

Hon. F. A. Manzanarez of Las Vegas, former delegate to congress and president of the board of trustees of the Miners' hospital, arrived last evening from the Meadow City.

J. E. Lacombe, proprietor of the popular Oxford club, has gone to Sulphur hot springs, Sandovot county, where he will remain two or three weeks taking the baths.

Mr. and Mrs. Price Cross, of Dallas, Texas, are visiting in this city and are the guests of Mrs. Cross on the south side. They are en route to San Francisco.

A. M. Dettelbach, fire marshal of this city, left this evening for Las Vegas to transact business connected with the holding of a fireman's tournament in this city during the first week of September next.

Max Kalter a former resident of this city reached Santa Fe last evening from Colorado where he has been on a vacation. Mr. Kalter will spend a short time here seeing old friends before returning to El Paso where he now lives.

Mr. and Mrs. Western Bascome and party will leave this evening for California. This morning the party visited the Indian school and other points of interest. They will go to San Francisco and other coast cities before returning to St. Louis.

Frank Dibert, assistant treasurer of the Santa Fe Central Railway Company, and C. G. Kaadt, official photographer of the road, left last evening for Torrance fully equipped with photographic apparatus and material and will take views of the scenery along the line of the road before returning home.

LUNCH COUNTER

Our Lunch Counter is kept stocked with everything in the eating line from Eastern and Western Markets, and if you are looking for a good place to eat at, call at the BON TON.

WILL WORSHIP IN NEW CHURCH.

St. John's Congregation Will Hold Services in New Edifice.

The congregation of St. John's Methodist Episcopal church will hold services for the first time in their new edifice Sunday. The new building is located on Don Gaspar avenue and has been in the course of construction for the past year. The exterior is of brick and presents a very attractive appearance. The interior will be finished in hard wood and the exact nature of the furnishings will be decided upon at a later date. The ceiling is of steel and the walls are of hard plaster finish. The auditorium will have a seating capacity of 250. So far, the new structure has cost \$4,000 and it is expected that at least \$1,000 more will be required to complete the work. It is the intention of the pastor, Rev. W. A. Cooper, to have the dedicatory exercises about the middle of October, and on that occasion to have present Chancellor Buchtel of the Denver university and Rev. Dr. Carnine, presiding elder of the Denver district. There has been no date set, however, and the plans will be definitely arranged later on.

U. S. Weather Bureau Notes.

Forecast for New Mexico: Generally fair tonight and Saturday, except possibly local showers in northeast portion Saturday.

Yesterday the thermometer registered as follows: Maximum temperature, 81 degrees, at 4:40 p. m.; minimum, 60 degrees, at 5:20 a. m. The mean temperature for the 24 hours was 70 degrees. Mean daily humidity, 42 per cent. Temperature at 8:00 a. m. today, 61 degrees.

Quality price — Schilling's Best—don't waste your money trying to make it go further.

Your grocer's; moneyback.

GOOD DINNERS

Are being served every day at the BON-TON. These dinners are becoming quite popular, and it is the intention of the management to keep them up to the standard. It will pay you to call.

Try a New Mexican want "ad."

ESTABLISHED 1856

INCORPORATED 1903

Wholesale and Retail

DRY-GOODS

GREATLY REDUCED PRICES FOR ALL SUMMER GOODS.

WE LEAD THEM ALL!

With the Most Complete Line in the City

SELIGMAN BROS. COMPANY

Call and see our Large Assortment of

MEN'S FURNISHINGS, CLOTHING, HATS, CAPS, BOOTS, AND SHOES. CARPETS, DRY-GOODS, MILLINERY, RUGS, DRESS-MAKERS' SUPPLIES.

Honest and Courteous Treatment to All.

Telephone No. 36. CLOTHING MADE TO ORDER. P. O. Box No. 434. SOUTH SIDE PLAZA. SANTA FE, N. M.

F. S. DAVIS, President. S. G. CARTWRIGHT, Sec'y and Treas.

CARTWRIGHT-DAVIS CO.

Telephone No. 4. No. 250 San Francisco Street.

BUTCHERS BAKERS .. GROCERS ..

MEAT MARKET. PHONE 49. Our market is always the place to find the fanciest cuts of corn fed beef and mutton. The nicest veal and lamb. Our boiled hams are extra nice these days. Try our chipped beef and sausage. Premium hams and bacon are better than ever. Six deliveries daily to all parts of town.

MELONS.

We are receiving daily by express, luscious ripe red watermelons, and fine flavored, sweet cantaloupes. Always fresh and always good.

YELLOW PEACHES.

Fine ripe, yellow, free stones, direct from the Mesilla valley orchards daily by express. Now is the time to can them; 20 pound box, \$1.25.

NEW CANNED GOODS.

Deviled or potted Chicken.....15
Deviled or potted Turkey.....15
Deviled or potted Ham.....05
Big cans tripe.....20
Sweet breads.....35
Bleater or sardine paste.....25
Green Turtle Soup, Hickmott's.....40
Green Turtle Meat.....35
Lunch Tongue.....20 and 35
Sliced beef, glass.....20 and 35
Corned beef hash.....12-1-2 and 20

HAY, GRAIN AND FEED.

We now have in stock the new crop of both Kansas hay and native alfalfa. Order your feed from us and get the best.

NO. 4 BAKERY.

The large quantities of bread, pies and cakes we are turning out testify to the high esteem in which our bakery products are held. Our four wagons make prompt deliveries to all parts of town. All parcels securely wrapped in clean paper before leaving the store. Early delivery of all standing orders.

FRESH EGGS.

It is a difficult matter to get good eggs this time of year, but we do it by the aid of an old friend in Kansas, who sends us the finest selections of the large number of eggs handled by him. Ask for our "Select" brand of eggs.

FRESH BUTTER.

We are still receiving regular supplies of Meadow Gold Butter. It is regarded by all acquainted with its superior flavor, sweetness and keeping qualities as being absolutely the finest produced. Per pound, 30c. We have lately added the best brand of Colorado made butter that we could find. Packed in sealed cartons, we offer Arrow Brand Creamery at pound 25c.

ALWAYS IN THE LEAD.

"CRYSTAL PATENT FLOUR" is a High Grade Kansas Flour. Has no Equal. We have cut the price to \$1.15 for a Fifty-Pound Sack.

Eagle Brand Condensed Milk, 3 cans, . 50c.
Bromangelon, all flavors, 2 packages. . . 25c.
Yacht Club Salad Dressing, none better, . 30c.
Welch's Grape Juice, one pint bottle, . . 30c.
Malt Nutrine, 20c.
100-pound sack Potatoes, \$2.50.
Eggs, per dozen, 20c.

H. S. KAUNE & CO.

HENRY KRICK

SOLE AGENT FOR

LEMP'S ST. LOUIS BEER.

ALL KINDS OF MINERAL WATERS.

The trade supplied from one bottle to a carload. Mail orders promptly filled. GUADALUPE STREET. SANTA FE.

The Old Curio Store

J. S. CANDELARIO, Prop.

301 and 303 San Francisco Street.

Wholesale and Retail Dealers in

Mexican and Indian Curios

The best place to buy Navajo Blankets, Indian and Mexican Pottery, Relics from the Cliff Dwellings, Indian Baskets, in fact all sorts of Curios of Indian and Mexican make can be found at Our Store.

P. O. BOX 340 : : : : SANTA FE, N. M.

J. P. VICTORY

Attorney at Law and Real Estate Agent

112 San Francisco Street, Santa Fe, N. M.
Money to loan upon real estate security on easy terms.

Something choice: First class properties on San Francisco street paying more than 8 per cent net on rentals.

Have upon my books—excellent fruit ranches in the Espanola valley, large and small ones, plenty of water.

Furnished rooms on Palace avenue.

I have a nice cottage (double) six rooms on one side, 4 on the other; owner occupies 4 rooms and the rest rent for \$25 a month; good neighborhood; ample space to erect other buildings on same street; stables and other outbuildings; the price asked is very low.

Can sell at a bargain a cosy home on Manhattan avenue, an adobe brick house, 7 rooms; fruit and vegetable garden; city water, hydrant and tank; 70 choice fruit trees; currant and raspberry bushes; lot 80 by 265 feet.

I can show you a tract of land west of town, 40 acres, with two adobe houses, one with 4 rooms, the other 2; 15 acres in alfalfa; 800 fruit bearing trees; 2 wells; alfalfa sold for \$300 last season; very cheap.

I also have a fruit ranch in a high state of cultivation, in the suburbs, with a building site overlooking the entire city of Santa Fe. On it there is an artificial reservoir, the only one of its kind in the city, 12 feet or more in depth, holding over 125,000 gallons of water, constantly replenished, from which the whole place can be irrigated daily during the summer, and which could be stocked with fish. The land contains many hundreds of young trees of the finest and most valuable varieties of apples, peaches, pears, plums, apricots, cherries and other fruits, the greater part of which are already bearing; a young bearing vineyard, thousands of bushes of currants and other small fruits; extensive beds of asparagus, rhubarb, and other fine vegetables. To be sold on easy terms, and for much less than it cost, owing to ill health of the owner.

Examine a 23-acre tract east of the Wileandy place, and then ask me its price; you will be surprised.

I am authorized to dispose of the Congregational Church, on the south side, convenient to the contemplated Union Depot. It stands upon two lots, and will be sold cheap, or the building will be repaired and leased to responsible parties.

On lower San Francisco St., east of the railroad track, I can sell you properties desirable for homes or business propositions; these will bear examination. I will take pleasure in showing prospective investors desirable building sites in the neighborhood of the Capitol, and in the vicinity of the Presbyterian Church, which in a few years will be worth double the present asking price. About two blocks west of Guadalupe church, on De Vargas St., I can sell you three small homes.

OUTSIDE PROPERTY.
At El Cuervo, 10 miles from the Rock Island road, I can sell you about 640 acres; patented; excellent grazing land.

Convenient to Las Vegas, I have for sale several large tracts of desirable land which I am permitted to sell at very low figure. One tract contains about 3,500 acres, and is located about three and one-half miles southwest of Las Vegas; nearly all of it is under fence; good grazing and water for stock; some timber. Another tract of 550 acres, 7 miles from Las Vegas; timber and grazing, with an excellent stream of water passing over it. Still another tract of 350 acres of farming, grazing and timber land, 8 miles west of Las Vegas, with running water upon it.

MERCANTILE PROPOSITIONS.
To those desiring an investment in a good mercantile business located in a thriving town in Rio Arriba county I can suit them with the chance of their lives; general merchandise, large stock; store, two cottages, stables, and other buildings; large tract of land, with big orchard, producing the last season \$1,400; merchandise business pays from \$2,500 to \$3,000 a year and can be increased; fine fishing, boating and bathing; with horses, wagons, etc., 20 varieties of choice roses and other flowers in abundance; owner will allow prospective purchaser to thoroughly investigate before buying; good reason, given for selling.

I have several other commercial and business propositions to submit those desiring to enter mercantile life and to grow up with the new era of prosperity now coming in with the Santa Fe Central, and an eight page daily; who says that the world don't move, and our city with it.

HOUSES TO RENT.
One 9 room house, with all modern conveniences, excellent neighborhood. A new 6 room cottage, bath, stationary range and all modern conveniences. Also the building corner of Water st. and D & R G railroad track lately used as a saw mill.

Several small houses, some adobe, some brick, others frame, upon my books, which I would be glad to show an intended purchaser. They are desirably situated, and will be sold cheap.

UNFURNISHED ROOMS.
I can rent several rooms in the Hersch building on lower San Francisco street, or will lease the whole building.

I have 3 or 4 rooms, and stable, that I will rent, on De Vargas St., two blocks west of Guadalupe church.

FARMS & RANCHES.
I have inquiry from outside party for ranch in the Espanola valley; also for ranch in the district between Tesuque and Espanola; price must be reasonable.

BIDDERS ASK FOR TIME

General Manager Hopewell Postpones
Opening Bids—A Temporary
Union Depot.

General Manager W. S. Hopewell of the Santa Fe Central Railway has postponed the opening of bids for the construction of the new union depot for the Santa Fe Central Railway and the Denver & Rio Grande Railroad in this city until the hour of noon on Tuesday the 25th inst. This was done at the request of several builders and contractors in this territory and in Colorado who desire to bid upon the construction of the depot and who found that not sufficient time had been given wherein to examine the situation and to prepare their bids.

The construction of a temporary depot for the Santa Fe Central Railway under the direction of Chief Engineer A. G. Kennedy was commenced on the south side today. The evaporating plant of the Santa Fe Fruit Company which was sold sometime ago to the Santa Fe Central Railway Company will be used as a part of this temporary depot for passengers and freight until the completion of the new union depot.

Grading in the yards at Estancia station seventy miles south of this city is progressing rapidly; two side tracks have already been put down and the station will be fully equipped with switches, side tracks, turn tables and a temporary shop. A train shed 350 feet long has already been completed and is ready for service.

The town site at Estancia has been surveyed and the town site company is getting ready to dispose of lots. There are several new adobe buildings under construction and the nucleus of a good town is already in progress.

At Clark station, twenty-eight miles south of here, the company has put in coal scales and a coal platform for the purpose of loading the engines with coal produced in the O'Mara coal fields in the vicinity of Clark.

MINOR CITY TOPICS

Why buy unknowns—Goebel—Round Oak cost no more.

Full account of Corbett-Jeffries fight by rounds at the Claire tonight.

Santa Fe Lodge No. 2 I. O. O. F. will meet this evening at 7:30 o'clock in regular weekly meeting at Odd Fellows hall.

ABRAHAM GOLD—Born November 11, 1847, died August 14, 1903. Funeral from late residence on San Francisco St. at 2 o'clock August 16, 1903.

Important official matter and interesting local news is to be found on page 7 of this issue. In spite of its enlargement the news pages of the New Mexican are crowded to overflowing.

A certificate of marriage has been filed in the office of the probate clerk, the parties being Francisco Martinez and Maria Ribera. The ceremony was performed by Rev. Father Foucheu on April 20th last.

Every citizen who can make it at all convenient to attend, should be present at the meeting of the board of trade in the county court house this evening. Matters of great importance to the town will be discussed at this meeting.

The board of county commissioners of Santa Fe county will meet in special session in this city Monday next for the purpose of correcting an omission in the territorial tax levy and to increase the entire levy for the present year on account of this omission.

Predictions are for generally fair weather tonight and Saturday, except possibly local showers in the northeastern portion Saturday. The maximum temperature yesterday was 81 degrees at 4:40 p. m., the minimum was 60 degrees at 5:20 a. m. The temperature at 6 o'clock this morning was 61 degrees.

The Shaw-Gibson Mining Company of New Haven, Conn., has struck a vein of four feet of coal on its property in the Cerrillos district. They propose to open it up systematically and place the product in this market. The vein between walls is six feet and regularly formed. Four feet of solid coal is a good thing in this country.

Superintendent H. O. Bursum of the territorial penitentiary has increased the force of the convicts working the "Scenic Route" road between the canon of the Santa Fe river and the Dalton divide to thirty, and is pushing work there rapidly and energetically. He has strong hopes that the top of the divide will be reached by the close of the season, which will be about the 15th of October.

Postoffice Inspector A. B. Smithers, who has inspected conditions along the line of the Santa Fe Central Railway, favors the immediate establishment of railway mail service along that line and the supply of several star mail routes from railway stations on the Santa Fe Central. As soon as regular passenger trains can run over the road it is understood that regular railway mail service thereon will be established.

This will be a great convenience to the towns of Taquite, Chilli, Manzana, Torreon, Pinos Wells and other towns a few miles east and west of the line that will be supplied by star routes from postoffices on the railway.

Complaints are frequent that there are two or three young fellows about town who do nothing for a living but

who loaf on street corners and act insolently and talk roughly to ladies who pass them. One incident occurred yesterday, and the young lady insulted had the young man arrested, but upon his begging her pardon in the presence of a police officer, did not prosecute as she disliked the notoriety prosecution would bring. The police officers should make it a point to promptly arrest such offenders. Ten days in the city jail would do them great good.

Santos Alire has been released from the city jail where he served a sentence of ten days for assault.

George E. Ellis, proprietor of the Claire has arranged for a complete account of the Corbett-Jeffries mill and will have the returns by rounds. They will be announced at the Claire tonight.

In the first judicial district court for San Juan county D. J. Kennedy has filed suit in assumpsit against C. M. Elliott. Complainant claims from defendant the sum of \$200 to be paid him for commissions and services rendered in a certain land sale.

A deed was filed in the office of the probate clerk and ex-officio recorder of Santa Fe county conveying a tract of land located in precinct 3 of the county of Santa Fe. The property was transferred to James L. Seligman by Francisco Lujan de Navarant et al., for the consideration of \$1.

A society for all kinds of helpful study will soon be organized in Santa Fe. A meeting looking to this end was held at the Presbyterian church Tuesday evening and was attended by about forty persons. A committee was appointed to select a name for the society, to outline a plan and draft a constitution. The committee consists of Judge A. J. Abbott, Judge John R. McFie, Judge W. H. Pope, Miss Leadingham and Rev. W. Hayes Moore. This committee will report at a subsequent meeting.

The society hopes to take up studies that are scientific, historical, commercial and economic as well as literary. It is not intended that it should be in any sense sectarian or denominational, but aims to give the whole community a profitable evening once every two weeks during seven or eight months of the year.

OFFICIAL MATTERS

TERRITORIAL FUNDS.

Territorial Treasurer J. H. Vaughn today received \$873.46 of 1902 taxes from George J. Pace, collector and ex-officio treasurer of Colfax county.

APPOINTMENT OF SUPERINTENDENT OF SCHOOL OF MCKINLEY COUNTY.

At noon today Governor Otero appointed Joseph A. Coddington to be superintendent of schools of McKinley county, vice L. L. Henry, resigned. Mr. Coddington had very strong endorsements from leading citizens and tax payers of the county for the position.

ASSESSMENT ROLLS.

Territorial Auditor W. G. Sargent today received the first of the assessment rolls for 1903, that of Sierra county. The total assessment of the county for 1903 is \$1,326,920.45, against \$1,552,402.89 last year, a falling off of \$225,482.35, said to have been caused by a reduction in grant valuations by the board of equalization. The exemptions for this year amount to \$72,129, the railroad assessment to \$361,540. There are 4,059 acres in the county classified as agricultural and 277,757 acres classified as pastoral. The assessment returns show 30,660 cattle, 15,978 head of sheep and 19,653 goats returned for assessment purposes.

GOVERNMENT SUPERVISION.

Judge Grosscup Says Therein Lies Only Hope for Perpetuation of Country.

Dixon, Ill., Aug. 14.—Judge Peter S. Grosscup, of the United States circuit court, in an address before the Lutheran assembly, expressed the belief that in the supervision of monopolies by the government lies the only hope for the perpetuation of the American nation, and he sounded a warning against the manipulation of securities in the interest of unscrupulous promoters and speculators. He said that a large increase in savings bank deposits was an evidence that the laboring classes would not invest in industrials because "polite swindlers and high-up rascals" were able to subvert the laws and give stocks a value they did not really possess.

BOUNDARY COMMISSION TO MEET IN SEPTEMBER

Washington, Aug. 14.—The State department has been informed by Ambassador Choate that the first meeting of the Alaskan boundary commission will be held September 3 in the British Foreign office.

GENDARME HALIM SENTENCED AND HANGED

Constantinople, Aug. 14.—The court martial at Monastir has condemned Gendarme Halim to death for the murder of the Russian consul. The sentence was immediately carried out.

LORD SALISBURY ILL.

London, Aug. 14.—After a consultation, the physicians of Lord Salisbury who was taken ill yesterday, announce that his condition is unchanged.

Wool Market.

St. Louis, Mo., August 14.—Wool, strong. Territory and western medium, 16½¢; 18½¢; fine medium, 14½¢; 16¢; fine; 13½¢; 16¢.

Old papers for sale at this office.

SCALP HUMOURS

Itching, Scaly and Crusted
With Loss of Hair

Speedily Cured by Cuticura
Soap and Ointment

When Every Other Remedy and
Physicians Fail.

Warm shampoos with Cuticura Soap and light dressings of Cuticura, the great skin cure, at once stop falling hair, remove crusts, scales and dandruff, soothe irritated, itching surfaces, destroy hair parasites, stimulate the hair follicles, loosen the scalp skin, supply the roots with energy and nourishment, and make the hair grow upon a sweet, healthy scalp when all else fails.

Millions of the world's best people use Cuticura Soap, assisted by Cuticura Ointment, the great skin cure, for preserving, purifying and beautifying the skin, for cleansing the scalp of crusts, scales and dandruff, and the stopping of falling hair, for softening, whitening and soothing red, rough and sore hands, for baby rashes, itches and chafings, for annoying irritations and inflammations, or too free or offensive perspiration, for ulcerative weaknesses, and many antiseptic purposes which readily suggest themselves to women, as well as for all the purposes of the toilet, bath and nursery.

Complete treatment for every humour, consisting of Cuticura Soap, to cleanse the skin, Cuticura Ointment, to heal the skin, and Cuticura Resolvent, to cool and cleanse the blood may now be had for one dollar. A single set is often sufficient to cure the most torturing, disfiguring, itching, burning and scaly humours, eczemas, rashes and irritations, from infancy to age, when all else fails.

Sold throughout the world. Cuticura Resolvent, 50¢. (in form of Chocolate Coated Pills, 25¢ per box of 50). Ointment, 50¢. Soap, 25¢. Depot: London, 27 Chancery Lane, E.C. 4. U.S.A. Boston, 125 Columbus Ave. Foster Drug and Chem. Corp., Sole Proprietors.

Send for "How to Cure Every Humour."

Stock Market.

New York, Aug. 14.—Closing stocks—Atchafalpa, 62½; Atchafalpa preferred, 69½; New York Central, 125½; Pennsylvania, 126½; Southern Pacific, 46½; Union Pacific, 76½; Union Pacific preferred, 85½; United States Steel, 24½; United States Steel preferred, 72½.

MARKET REPORT.

MONEY AND METAL.

New York, Aug. 14.—Money on call easy at 1½ per cent. Prime mercantile paper 5½¢ to 6 per cent. Silver, 55½¢.

New York, Aug. 14.—Lead, quiet, \$4.20. Copper, firm, \$13.12½ @ \$13.25.

GRAIN.

Chicago, Aug. 14.—Close, Wheat, Sept., 82½¢; Dec., 83½¢.

Corn, Aug. 52½¢; Sept., 52½¢. Oats, Aug., 34½¢; Sept., 35½¢.

PORK, LARD, RIBS.

Pork, Sept., \$13.17½; Oct., \$13.02½.

Lard, Aug., \$8.02½; Sept., \$7.70.

Ribs, Sept., \$7.77½; Oct., \$7.80.

STOCK.

Kansas City, Mo., Aug. 14.—Cattle market steady.

Native steers, \$4.90 @ \$5.35; Texas and Indian steers, \$2.50 @ \$3.80; Texas cows, \$2.00 @ \$2.90; native cows and heifers, \$1.50 @ \$4.50; stockers and feeders, \$3.50 @ \$4.40; bulls, \$1.75 @ \$3.40; calves, \$2.75 @ \$5.50; western steers, \$2.90 @ \$4.85; western cows, \$1.90 @ \$3.00.

Sheep, market steady to 10¢ higher. Muttons, \$2.80 @ \$4.75; lambs, \$3.00 @ \$3.75; Range wethers, \$2.85 @ \$4.70; Ewes, \$2.80 @ \$4.70.

Chicago, Aug. 14.—Cattle, market cows easy, steers firm.

Good to prime steers, \$5.30 @ \$5.60; poor to medium, \$3.75 @ \$5.00; stockers and feeders, \$2.50 @ \$4.20; cows \$1.50 @ \$4.50; heifers, \$2.00 @ \$4.75; canners, \$1.50 @ \$2.90; bulls, \$2.00 @ \$4.25; calves, \$2.50 @ \$7.00; Texas fed steers, \$3.00 @ \$4.75; western steers, \$3.25 @ \$4.65.

Sheep, steady. Good to choice wethers, \$3.25 @ \$3.75; fair to choice mixed, \$2.50 @ \$3.25; western sheep, \$2.75 @ \$3.75; native lambs, \$3.25 @ \$6.00; western lambs, \$1.50 @ \$5.65.

Headquarters for wedding cards and announcements—New Mexican Printing Company.

THE EQUITABLE LIFE ASSURANCE SOCIETY

"Strongest in the World"

SURPLUS \$75,000,000

Have you taken out that policy in the EQUITABLE? If not, why not? The sooner you take it out the sooner it will mature. When you get your money you will rub your hands and say: "The best investment I ever made was my policy in the EQUITABLE." IT gives SECURITY, PROTECTION and Investment in the biggest Bank in the world.

Write to or call upon

MRS. L. A. HARVEY, AGENT.

102 Chapelle St., Santa Fe. Office Hours 8-12

Not Equaled in New Mexico

Not Excelled in America

IRELAND'S ICE CREAM SODA

Made from Pure Jersey Cream

Purity, Quality and Satisfaction Guaranteed.

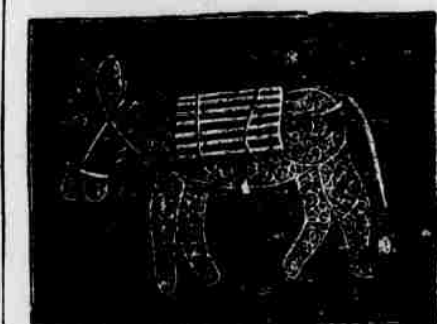
S. SPITZ

DIAMONDS

JEWELRY

A FULL LINE OF
WATCHES, CLOCKS,
SILVERWARE, ETC.

Manufacturer of
MEXICAN FILIGREE JEWELRY.

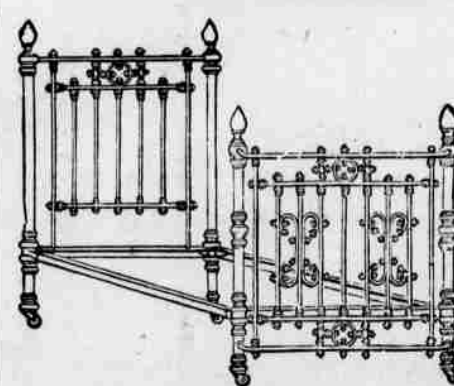


ALL KINDS OF DESIGNS IN
Filigree Fob Chains,
Filigree Neck Chains,
Filigree Souvenir Spoons,
Filigree Brooch Pins,
Filigree Bracelets,
Filigree Card Cases,

South Side Plaza - Santa Fe

D. S. LOWITZKI

Household Goods, Furniture and Queensware



We will furnish your house from kitchen to garret on easy payments, or will give reasonably low prices for cash.

All kinds of new and second-hand goods bought and sold.

WE DELIVER ALL GOODS.

San Francisco St., Santa Fe, N. M.

WE LEAD THEM ALL!

THE CHARLES WAGNER FURNITURE CO.

306 and 308 San Francisco St.



UNDERTAKING AND EMBALMING.
Charles Wagner, Licensed Embalmer and Progressive Mortician.

We have just received a carload of Decorated English and French Haviland China, at prices out of sight! Our buying in car lots enables us to name prices that can not be met by any of our competitors. That is not our trouble. We are here to give you the benefit of our experience. Nineteen years of continued business with you is our reputation.

We Carry Everything in Household Furnishing Our Goods are Marked in Plain Figures. One Price, and One Only.

GOODS SOLD ON EASY PAYMENTS.

Furniture, Queensware, Cutlery and Tinware, Stoves and Ranges, Fancy Haviland China of Every Description.

EVERYTHING GUARANTEED TO GIVE PERFECT SATISFACTION OR MONEY WILL BE REFUNDED

No Risk to do Business With Us.

TELEPHONE: Store, 10.
Night call at residence, No. 1.

Second-Hand Goods Bought and Sold.

B. HANLEY

San Francisco Street,

DEALER IN
W. H. McBRAYER, OLD CROW and
OLD OSCAR PEPPER KENTUCKY WHISKIES.
OVERHOLT and GUCKENHEIMER PENN RYE WHISKY.
IRISH and SCOTCH WHISKIES
AND DISTILLERY BOTTLED WHISKY.
FRENCH COGNAC and HOLLAND GIN.
CALIFORNIA WINES and BRANDY.
GUINNESS'S PORTER and BASSES' ALE.

Santa Fe, New Mexico.

LEO HERSCH...

WHOLESALE and RETAIL DEALER IN
**FLOUR, HAY,
GRAIN, POTATOES,
SALT and SEEDS.**

Only Exclusive Grain House in City

GO TO KAADT'S FOR

Indian and Mexican Curios.

LARGE STOCK NAVAJO BLANKETS

Our Photographic Parlors located on the second floor one door south of our Curio Emporium, is the best fitted in the city. The very latest styles and features of the art are employed. We Have First-Class Views for Sale Wholesale or Retail.

New Mexico Military Institute

ROSWELL, NEW MEXICO.

THE MILITARY SCHOOL OF NEW MEXICO ESTABLISHED AND SUPPORTED BY THE TERRITORY

Six men instructors, all graduates of standard eastern colleges. New buildings, all furnishings and equipments modern and complete; steam-heated, gas-lighted; baths, water-works; all conveniences. Tuition, board and laundry, \$200 per session. Session is three terms of thirteen weeks each.

Roswell is a noted health resort, 3,700 feet above sea level; well-watered. REGENTS—Nathan Jaffa, W. M. Reed, R. S. Hamilton, J. C. Lea and E. A. Cahoon. For particulars address, COL. J. W. WILLSON, Supt.

TELEPHONE NO. 9.

We make a Specialty of conveying tourists to all points of interest in and near the City

LIVERY

CLOSSON'S

STABLE

Our Equipment and Stock are Unexcelled in the West, and not Equaled in Santa Fe.

DON CARLOS AVENUE.

Table Wines!

AT "OUR PLACE"

Will Be Found a Full Line of Table Wines for Family Trade.

Orders by Telephone Will Be Promptly Filled

W. R. PRICE, Prop.

Santa Fe, N. M.

Wabash Route

Follow the Flag:

ST. LOUIS

CHICAGO

DETROIT

BUFFALO

AND ALL EASTERN CITIES.



NIAGARA

FALLS

NEW YORK

BOSTON

The Shortest and Only Line Running Over Its Own Track from Kansas City or St. Louis to Niagara Falls and Buffalo. With All Modern Conveniences.

Time and Service Unexcelled
Three Solid Fast Through Trains Daily

Stop-over allowed on all tickets via Niagara Falls. Meals served in the celebrated Wabash Palace Dining Cars. For further information inquire of Coupon Ticket Agents or address P. P. HITCHCOCK, General Agent, Passenger Department, DENVER, COLORADO.

Renovated and Refurnished Throughout.

Cuisine and Table Service Unexcelled

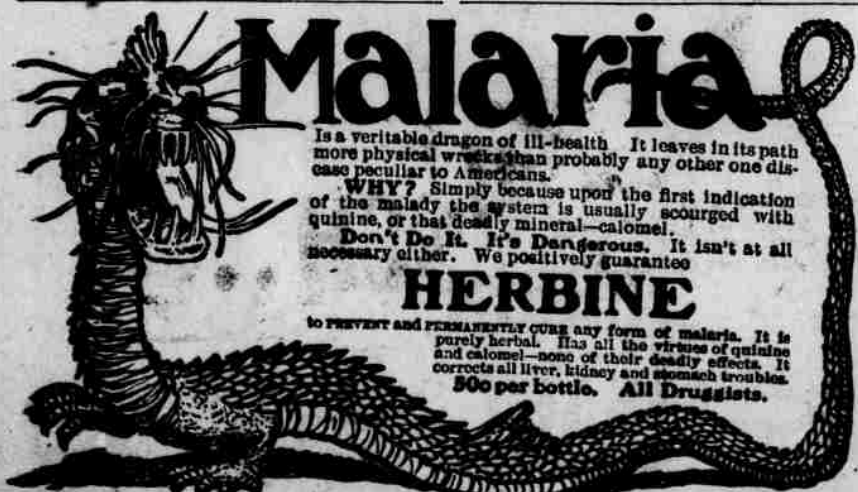
The Palace Hotel

WILLIAM VAUGHN, PROP.

Large Sample Rooms for Commercial Men.

Santa Fe

New Mexico



Malaria

Is a veritable dragon of ill-health. It leaves in its path more physical wreckage than probably any other one disease peculiar to Americans. WHY? Simply because upon the first indication of the malarial system is usually scourged with quinine, or that deadly mineral-calomel. Don't Do It. It's Dangerous. It isn't at all necessary either. We positively guarantee

HERBINE

to prevent and permanently cure any form of malaria. It is purely herbal. It has all the virtues of quinine and calomel—none of their deadly effects. It corrects all liver, kidney and stomach troubles. 50c per bottle. All Druggists.

MINES AND MILLS

The dividends paid by Cripple Creek mines during July amounted to \$462,313, this sum being distributed by nine mines.

The Coeur d'Alene mining district of Idaho, last year produced \$6,000,000 worth of lead and \$2,700,000 worth of silver.

The tariff on lead ores imported into the United States is 11-2 cents per pound. Gold and silver ores are admitted free of duty.

Fourteen thousand miners are employed in the Houghton mining district of Michigan.

In driving a tunnel, whether cross-cut or on the vein, always make provision for a water ditch, either on one side of the track or underneath. If this is not done and a water course is cut the miner will be obliged to cut a trench under very disadvantageous conditions or else will have a sloppy tunnel and a very bad track.

While it is generally true that steel scrapers should not be used on the amalgamating plates of a stamp mill, yet, in many cases, it is necessary, especially on the inside plates. When the amalgam is very hard it is practically impossible to remove it with the ordinary rubber scraper, and in this case steel must be used, although with discretion. The amalgam should not be entirely removed nor the plates cut so much as to show the copper.

In Africa the cost of cyaniding tailings is from 54 to 66 cents a ton.

Concrete foundations in stamp mills are subject to disintegration unless especially well built. A very heavy, slow setting cement is best for this purpose. This should be used liberally, four of rock and sand to one of cement. The concrete should be thrown from a height into the battery pit and well rammed. After setting for about twenty-four hours the surface should be thoroughly sprinkled with water at frequent intervals for about a week. No weight should be put on the foundation for at least two weeks after mixing the concrete. Some engineers give the cement a coating of asphalt but this is unnecessary. An inch of sand between battery posts and concrete is an excellent thing. This assists in preventing disintegration by vibration.

The United States last year produced \$70,000,000 worth of petroleum.

In 1855 aluminum was quoted at \$90 per pound, today it is sold at 35 cents per pound. The production of the metal in the United States is in the hands of one company. Bauxite and cryolite are the ores from which the greater part of the metal is extracted.

The Joplin (Mo.), zinc mining district the past half year produced \$5,000,000 worth of zinc.

The world's production of iron pyrites in 1902 was 1,665,000 long tons. Of this Spain produced 400,000 tons and France 291,000 tons. The United States produced 234,000 tons from which the sulphur contents were extracted to make sulphuric acid. The value of the ore was an even million dollars. Virginia produces fifty per cent of the iron pyrites in the United States, Georgia coming second with 20 per cent and the remainder is divided between North Carolina, Colorado, California, New York and a few other states.

The miner's inch of water in California is 11-2 cubic feet a minute. In Colorado a miner's inch is 100 cubic feet of water per hour.

Gold is found in every county of California.

The cost of raising water from the mines in the United States is something like \$15,000,000 a year. Germany ranks third in the production of coal and iron. It produces more potash salts than any other country. It is also first in zinc output. Copper, silver and lead are mined in large quantities.

Placer copper has been found in Alaska, at the head of the White River.

Native arsenic has never been mined in the United States, but a short time ago large specimens of it were taken out of the Double Standard mine in Santa Cruz county, Arizona.

The latest fates of types for letter heads, circular envelopes and the like at the New Mexican printing office. Get your work done at that office and have it done well, quickly and at lowest possible prices.

Try a New Mexican want "ad."

Entirely
Up to date
The

Remington

Standard Typewriters

New Models.

6, 7 and 8
Absolutely Reliable, Always.

Wyckoff, Seamans & Benedict

227 Broadway, New York.
NEW MEXICAN PRINTING CO.,
Santa Fe, New Mexico.

OFFICIAL REGISTER

OF

NEW MEXICO

(Corrected to August 1, 1903.)
TERRITORIAL OFFICERS.

Delegate to Congress—B. S. Rodey, Albuquerque.
Governor—Miguel A. Otero, Santa Fe.
Secretary—J. W. Reynolds, Santa Fe.
Solicitor General—E. L. Bartlett, Santa Fe.
Auditor—W. G. Sargent, Santa Fe.
Treasurer—J. H. Vaughn, Santa Fe.
Superintendent of Penitentiary—H. O. Bursum, Santa Fe.
Superintendent of Public Instruction—J. Francisco Chaves, Santa Fe.
Librarian—Lafayette Emmett, Santa Fe.
Commissioner of Public Lands—A. A. Keen, Santa Fe.
Adjutant General—W. H. Whiteman, Santa Fe.
Travelling Auditor and Bank Examiner—C. V. Safford, Santa Fe.
Game and Fish Warden—P. B. Otero, Santa Fe.
Public Printer—J. S. Duncan, Las Vegas.

JUDICIARY.

(Supreme Court.)
Chief Justice—W. J. Mills, Las Vegas.
Associate Justice—John R. McFie, Santa Fe.
Associate Justice—F. W. Parker, Las Cruces.
Associate Justice—B. S. Baker, Albuquerque.
Associate Justice—Vacancy.
Clerk—Jose D. Sena, Santa Fe.
District Court—
First District (Counties of Santa Fe, Rio Arriba, Taos and San Juan):
Judge—John R. McFie, Santa Fe.
Clerk—A. M. Bergere, Santa Fe.
District Attorney—E. C. Abbott, Santa Fe.

Second District (Counties of Bernalillo, McKinley, Valencia and Sandoval):

Judge—B. S. Baker, Albuquerque.
Clerk—W. E. Dame, Albuquerque.
District Attorney—F. W. Clancy, Albuquerque.

Third District (Counties of Dona Ana, Sierra, Grant, Otero and Luna):
Judge—F. W. Parker, Las Cruces.
Clerk—J. P. Mitchell, Las Cruces.

District Attorney—W. H. H. Llewellyn, Las Cruces.

District Attorney—R. M. Turner, Counties of Grant and Sierra, Silver City.

Fourth District (Counties of San Miguel, Leonard, Wood, Quay, Mora, Colfax, and Union):

Judge—W. J. Mills, Las Vegas.
Clerk—Secundino Romero, Las Vegas.

District Attorney—S. B. Davis, Jr., Counties of San Miguel, Mora, Leonard Wood and Quay, Las Vegas.

District Attorney—J. Leahy, Counties of Colfax and Union, Raton.

Fifth District (Counties of Socorro, Lincoln, Chaves, Eddy and Roosevelt):
Judge—Vacancy, Socorro.

Clerk—J. E. Griffith, Socorro.

District Attorney—A. A. Sedillo, County of Socorro, Socorro.

District Attorney—W. H. H. Llewellyn, County of Lincoln, Las Cruces.

District Attorney—J. M. Hervey, Counties of Eddy, Chaves and Roosevelt, Roswell.

FEDERAL OFFICERS.

Surveyor General—M. O. Llewellyn, Santa Fe.

Collector of Internal Revenue—A. L. Morrison, Santa Fe.

United States Attorney—W. B. Childers, Albuquerque.

Assistant United States Attorney—W. C. Reid, Roswell.

Assistant United States Attorney—E. L. Medler, Albuquerque.

United States Marshal—C. M. Foraker, Albuquerque.

Register Land Office—M. R. Otero, Santa Fe.

Receiver Land Office—Fred Muller, Santa Fe.

Register Land Office—N. Galles, Las Cruces.

Receiver Land Office—H. D. Bowman, Las Cruces.

Register Land Office—Howard Leland, Roswell.

Receiver Land Office—D. L. Guyer, Roswell.

Register Land Office—E. W. Fox, Clayton.

Receiver Land Office—A. W. Thompson, Clayton.

Jicarilla Indian Agency—H. H. Johnson, Superintendent, Dulce.

Navajo Indian Agent—G. W. Hazlett, Gallup.

Mescalero Indian Agency—J. S. Carroll, Superintendent, Mescalero.

Attorney for Pueblo Indians—A. J. Abbott, Santa Fe.

Superintendent Pueblo Indians North of Albuquerque—Clinton J. Crandall, Santa Fe.

Superintendent Pueblo Indians South and West of Albuquerque—George K. Allen, Albuquerque.

Superintendent of Forest Reserves—I. B. Hanna, Santa Fe.

From one dozen to twenty copies of the New Mexican are sent out daily to enquiries and applicants concerning Santa Fe. This is the very best kind of advertisement and is bearing good fruit, as the large number of tourist and healthseekers in the city abundantly shows.

DO YOU SEE THE POINT

CLEAN AND SWEET EVERY MORNING. We run the only Daily Bread, Cake and Pie Delivery in the City. The Only Way is the Right Way. Enough said of the Delivery. THE QUALITY—Try Us. "The Proof of the Pudding is in the Eating Thereof."

IT WILL PAY YOU TO STEP AROUND THE CORNER FOR YOUR!

GROCERIES, PROVISIONS, ETC.

Jersey Cream Flour Has Never Failed. We can sell you a Sack or Car.

GROGERS-KINSELL & CO.-BAKERS

Telephone, No. 40. PROMPT DELIVERIES. Water and Galisteo Sts.

CHARLES W. DUDROW,

DEALER

LUMBER - SASH - DOORS

All Kinds of Building Material.

TRANSFER AND STORAGE

We Haul Everything that is Movable.

Phone 35.

SANTA FE and CERRILLOS, N. M.

INCORPORATED

H. B. CARTWRIGHT & BRO.,

WHOLESALE GROCERS

Grain, Flour and Potatoes • Stationery, Patent Medicines and Grocers' Sundries.

PROMPT ATTENTION GIVEN MAIL ORDERS.

SANTA FE, N. M.

WINTER IS COMING!

NOW is the time to lay in your coal and get good, clean stock, and have it when you want it.

SPECIAL: Hard Coal at \$7.00 Per Ton, UNTIL SEPTEMBER 15TH.

CAPITAL COAL YARDS.

V. J. BAUER, Manager.

RUSH ORDERS RECEIVE PROMPT ATTENTION.

Temporary Office with Leo Hersch. • TELEPHONE, 45.

The most conveniently located and only fire-proof and steam-heated Hotel in the city.

Electric lights, baths and sanitary plumbing throughout. Everything up to date.

George E. Ellis, Proprietor

THE CLAIRE

American or European Plan

First-class Cafe and Buffet considered.

Fine Sample room for Commercial Men.

Postal Telegraph and Cable Co. Office.

SANTA FE, N. M.

P. F. HANLEY

DEALER IN

Fine Wines, Liquors & Cigars

Imported and Native Wines for Family Use.

OUR SPECIALTIES—Old Crow, McBrayer, Guckenheimer Rye, Taylor and Paxton, Old Jordan and Monogram, Ky., Whiskies.

SAN FRANCISCO STREET

SANTA FE, N. M.

Spring, Summer, Autumn, Winter.
ANYTHING & EVERYTHING WHOLESALE & RETAIL

AT BLAIN'S BAZAAR

J. H. BLAIN, Santa Fe, N. M.

J. WEINBERGER

SOUTH SIDE PLAZA, SANTA FE, NEW MEXICO.

Our Motto is to Sell the Best

WINES, LIQUORS, CIGARS

For the Least Possible Money

Buy your Goods Here. • Family Trade Solicited. Satisfaction Guaranteed.

CHEAP ROUND TRIP TICKETS

Via SANTA FE

Los Angeles and San Francisco, August 2 to 15, and October 12 to 18, \$38.45.
Denver, Colorado, \$22.55. On sale daily.
Colorado Springs, \$19.55. On sale daily.
Pueblo, Colorado, \$17.55. On sale daily.
Grand Canyon, Arizona, \$36.25. On sale daily.
Phoenix, Arizona, \$46.25. On sale daily.
Paywood Hot Springs, New Mexico, \$15.20. On sale daily.
Seattle, Tacoma, and Portland, \$48.75. On sale August 2d to 15th.

HOMESEEKERS' EXCURSIONS.

August 4th, 18th, September 1st and 15th, tickets will be sold from all points in Illinois, Iowa, Missouri, Kansas and Nebraska to points in New Mexico at one fare plus \$2.00 for the round trip.

ONE-WAY HOMESEEKERS' TICKETS.

On the First and Third Tuesday of each month one-way second-class tickets will be sold from Kansas City, St. Joseph and east to points in New Mexico at half rate plus \$2.00.

TELL YOUR FRIENDS IN THE EAST.

You can deposit your money with the local agent, who will telegraph free of charge and have tickets furnished from any part of the world.
Pullman reservation secured in advance, and all information in regard to rates, time and connections cheerfully furnished on application.
W. J. BLACK, G. P. A., Topeka, Kansas.



For full particulars as to limits, routes, etc., address any agent of the Santa Fe System

H. S. LUTZ, Agent,
Santa Fe, N. M.

OLDEST IN THE CITY

J. LOWITZKI,
Lower San Francisco Street.

Livery, Feed and Sale Stable

HACKS AND VEHICLES PROMPTLY FURNISHED.

Careful Drivers for Tourist Parties. Everything First-class.

TELEPHONE 57.

OJO CALIENTE HOT SPRINGS.

These Celebrated Hot Springs are located in the midst of the Ancient Cliff Dwellers, twenty-five miles west of Taos, and fifty miles north of Santa Fe, and about twelve miles from Baranca Station, on the Denver and Rio Grande Railway, from which point a daily line of stages run to the Springs. The temperature of these waters is from 90 to 122 degrees. The gases are carbonic. Altitude, 6,000 feet. Climate very dry and delightful the year round. There is now a commodious hotel for the convenience of invalids and tourists. These waters contain 1,686.24 grains of alkaline salts to the gallon, being the richest alkaline Hot Springs in the world. The efficacy of these waters has been thoroughly tested by the miraculous cures attested to in the following diseases: Paralysis, Rheumatism, Neuralgia, Consumption, Malaria, Bright's Disease of the Kidneys, Syphilitic and Mercurial Affections, Scrofula, Catarrh, La Grippe, all Female Complaints, etc., etc. Board, lodging and bathing, \$2.50 per day; \$14 per week; \$50 per month. Stage meets Denver trains and waits for Santa Fe train upon request. This resort is attractive at all seasons, and is open all winter. Passengers for Ojo Caliente can leave Santa Fe at 9 a. m., and reach Ojo Caliente at 4 p. m. the same day. Fare for round trip from Santa Fe to Ojo Caliente, \$7.40. For further particulars, address

ANTONIO JOSEPH, Proprietor
Ojo Caliente, Taos County, N. M.

LOOK AT THE CLOUDS FROM THE TOP

And so see the Silver Lining. You can do it from OUR TRAINS. We go above them in places.

Mexican Central Railway

With Its Two Thousand Miles of Track Reaches All the Principal Places of Interest and Note.

Address the undersigned for full and reliable information.

W. D. MURDOCK, A. G. P. A.,
City of Mexico

W. S. MEAD
Commercial Ag't El Paso,

A

Berth

to

Chicago
\$2.50

Burlington
Route

A daily tourist sleeper leaves Denver for Chicago on the Burlington's vestibuled Flyer at 10.00 p. m. arriving Chicago the second morning at 7.20.

The rate for a double berth, which can accommodate two people, Denver to Chicago, is \$2.50.

These tourist sleepers are especially suited for summer travel—they are clean and comfortable; provided with toilet-rooms for ladies and gentlemen; are equipped with combs, brushes, soap, and towels. Bed linen is of superior quality and is changed daily. The seats are upholstered in rattan and have high backs.

The Chicago Special leaves Denver every day at 4.15 p. m. St. Louis Flyer daily at 2.30 p. m. and 10.00 p. m.

Ticket Office, 1039 17th St
G. W. VALLERY, General Agt.
DENVER

HE STIRRED THEM UP

Delegate Rodey Is Assured That Government Is Making Effort to Fill Indian Schools.

New Mexico has heretofore been slighted in the matter of appropriations for the maintenance of the Indian schools in the territory and for experimenting for artesian water and the construction of reservoirs upon Indian lands. Delegate Rodey, who is always alive to the best interests of the territory, is making a strenuous fight to remedy these matters at the coming session of congress and to secure for the Indian schools of this territory fair and equitable appropriations. He also objects very strongly to agents and superintendents from Indian schools in other localities coming into New Mexico, visiting the various tribes, and carrying off Indian children to be educated far away from home, when they could better be educated at Albuquerque or the Santa Fe institution. This means that much money which should be spent in New Mexico for the education of the Indian youth is yearly expended outside of the territory. Mr. Rodey has written to the commissioner of Indian affairs and fully and explicitly expressed his views upon these subjects.

The acting commissioner advises Delegate Rodey that an earnest and diligent effort is being made by the government officials to fill the school at Albuquerque to the limit of its capacity, and states that the Santa Fe school was filled last year, and that there is no reason to suppose it will not be filled this year. He hopes that the Albuquerque school will be similarly filled. The superintendents of both schools are directed to make diligent effort among the pueblos under their charge for the purpose of filling the schools. Statistics show that there is almost an unlimited number of children of school age in the pueblos under their charge who could fill both schools to overflowing. The commissioner urgently requests the co-operation of Mr. Rodey and ask him to advise the people of the territory to assist these superintendents in every way proper to urge the pueblo Indians to send their children to school. The commissioner thanks Delegate Rodey for the interest he takes in these matters, and further states that the frequent department changes of local superintendents in the Indian schools has been unavoidable.

OFFICIAL MATTERS

TREASURER'S RECEIPTS.
Territorial Treasurer J. H. Vaughn received today from John C. Plemmons, collector and ex-officio treasurer of Sierra county \$1,821.99 of 1902 taxes; from Leopoldo Sanchez, collector and ex-officio treasurer of Leonard Wood county \$439.70; from Romualdo Roybal, collector and ex-officio treasurer of Mora county \$313.87 of 1902 taxes.

INCORPORATIONS.
W. L. Harper and Horace A. Kingsbury of New Mexico, and Matthew C. Harper of Mississippi, directors, today filed incorporation papers for the Sunset Mining Company with a capital stock of \$250,000 divided into 250,000 shares. The headquarters are at Fairview, Sierra county.

The Deming Bank, Loan and Trust Company today filed incorporation papers, the incorporators being: J. George Hilzinger, Mark Miller, J. B. W. Burton, B. N. Davis, J. W. Wyatt of El Paso, Texas; W. J. Eck, M. W. Wambaugh, of St. Louis; J. H. Tracy, F. F. Rogers, W. C. Wallis, S. Lindauer, Frank Thurmmond, A. W. Pollard, J. W. Hannigan of Deming; Albert B. Fall of Las Cruces. The capitalization is \$250,000 divided into 2,500 shares, which are subscribed by the following: Clark, Fall, Hawkins, and Franklin, trustees, 1,000 shares; J. George Hilzinger 300 shares, John W. Wyatt 100 shares; V. J. Peck 100 shares, P. R. Smith 300 shares, M. W. Wambaugh 250 shares, Frank Miller 250 shares, J. B. W. Burton 700 shares, all of El Paso; A. B. Fall 100 shares, Las Cruces; A. W. Pollard 10 shares, W. C. Wallis 10 shares; F. F. Rogers 10 shares, of Deming. The directors are J. G. Hilzinger, J. M. Wyatt, W. J. Beck, A. B. Fall, W. C. Wallis, A. W. Pollard, F. F. Rogers. The headquarters are at Deming, Luna county.

COUNTY SCHOOL REPORTS.

Superintendent of Public Instruction J. Franco Chaves has thus far received the annual reports of five county school superintendents, those of Socorro, Sierra, Valencia, Eddy and Bernalillo. The following are the summaries of the reports:

Socorro county: Teachers 41, male 30; female 11; enrollment 2,246; average daily attendance 1,425; children of school age 4,187; schools 41; months taught 116; receipts \$18,937.56; paid for teachers wages \$6,430.50; balance in treasuries \$8,759.69; value of public school houses \$37,025; of Sisters of Loreto academy \$10,000; of School of Mines \$60,000. Town of Socorro, teachers 4; male 2; female 2; enrollment 292; average daily attendance 141; children of school age 450; schools 4; months taught 6; receipts \$4,420.66; paid for teachers' wages \$1,200; balance in treasury \$1,346.50; value of school houses, \$23,000.

Sierra county: Teachers 17; male 5; female 12; enrollment 724; average daily attendance 428; children of school age 1,210; schools 17; months taught 94; receipts \$12,316.67; paid for teachers' wages \$4,930; balance in treasury \$6,157.93; value of school property \$3,815.

Eddy county: Teachers 24; male 5; female 19; enrollment 916; average daily attendance 522; children of school age 1,418; schools 19; months taught 101; receipts \$22,650.31; paid for teachers' wages \$9,646.10; balance in treasuries \$11,063.92. Carlsbad, teachers 8; male 5; female 3; enrollment 416; average daily attendance 229; children of school age 541; schools 3; months taught 19; receipts \$5,594.94; paid for teachers' wages \$4,521; balance in the treasury \$3,271.54.

Valencia county: Teachers 41; male 24; female 17; enrollment 1,588; average daily attendance 1,229; children of school age 2,953; schools 41; months taught 217; receipts \$31,845.38; paid for teachers' wages \$7,931.32; balance in treasuries \$21,926.38; value of school property \$3,700.

Bernalillo county: Teachers 88; males 47; female 41; enrollment 6,438; average daily attendance 4,994; children of school age 8,776; schools 87; months taught 665; receipts \$54,428.98; wages paid to teachers \$37,617.17; balance in treasuries \$8,517.39; value of school property \$121,616.25. City of Albuquerque, teachers 27; male 5; female 22; enrollment 1,421; average daily attendance 987; children of school age 2,079; schools 27; months taught 240; receipts \$24,215.80; wages paid teachers \$19,790; balance in treasury \$402.01; value of school property \$105,000.

THEY ALL DEMAND IT.

Santa Fe Like Every City and Town in the Union Receives It.

People with kidney ills want to be cured. When one suffers the tortures of an aching back, relief is eagerly sought for. There are many remedies today that relieve, but do not cure. Here is evidence to prove that Doan's Kidney Pills cure and the cure is lasting. Juan A. Ortega, ex-policeman, of Loma street, says: "If all troubled with pain in the back have that annoyance ended as quickly as the use of Doan's Kidney Pills procured at Ireland's Pharmacy ended mine then backache due to kidney complaint would cease to have any terrors for users of this very strengthening and curative preparation. No one in Santa Fe needs be the least dubious about using Doan's Kidney Pills if they require a medicine to wash, purify and strengthen their kidneys."

For sale by all dealers. Price 50 cts. Foster McBurn Co., Buffalo, N. Y., sole agents for the United States. Remember the name, Doan's, and take no substitute.

LEGAL NOTICE.

Notice to owners and holders of bonds, coupons and judgments of and against the county of Santa Fe, Territory of New Mexico.

Notice is hereby given to the owners and holders of the bonds and coupons of the county of Santa Fe of the various issues thereof, and of judgments against the board of county commissioners of the county of Santa Fe, pursuant to resolution passed by the board of county commissioners of the county of Santa Fe at a regular session thereof held July 10th, 1903; the board of county commissioners of the county of Santa Fe, Territory of New Mexico, is now ready and prepared to refund these bonds together with past due coupons, or any part thereof, of the county of Santa Fe and Territory of New Mexico, (and any other valid and subsisting indebtedness evidenced by judgments) against the board of county commissioners of the county of Santa Fe, for the purpose of compromising and adjusting the same in accordance with the resolution heretofore passed by the board of county commissioners of the county of Santa Fe, to wit: by the exchange of bonds of the county of Santa Fe bearing 3 per cent per annum for outstanding bonds, matured coupons and judgments, said outstanding bonds, matured coupons and judgments to be refunded at 60 per cent of their face value, as authorized by an act of the 34th legislative assembly; being chapter 41 of the Session Laws of 1901; or to compromise said outstanding indebtedness, as above specified, or any portion thereof, upon and above stated basis as authorized and provided for by an act of the 35th legislative assembly, being chapter 95 of the Session Laws of 1903.

In witness whereof the Board of County Commissioners of the said county of Santa Fe have caused this notice to be signed by its chairman and attested by its clerk under the seal of the county this 10th day of July A. D. 1903.

A. L. KENDALL,
Chairman.
CELISO LOPEZ, Probate Clerk.
All communication upon this subject should be addressed to Celiso Lopez, clerk of the Board of County Commissioners, Santa Fe, N. M.

Money's Digest to New Mexico Supreme Court Decisions for sale by the New Mexican Printing Company.

Our facilities are complete
For the prompt production of Book, Pamphlet, Catalogue, and General Printing and Binding. We do only the Best grades of work and solicit the business of firms and individuals desiring "something above the ordinary" at simply a consistent rate for the character of work we turn out. All orders promptly attended to, and estimates furnished on application.
NEW MEXICAN PRINTING CO.

ON AUGUST 20, 1903, Santa Fe Central Railway

IN CONNECTION WITH THE



Will Open a New Passenger and Freight Line Between

SANTA FE, N. M.,
AND
EL PASO, TEXAS,
VIA
TORRANCE

THIS IS THE LONG-WISHED-FOR EVENT ACCOMPLISHED.

Call on local agents for full information regarding this new line, the country it runs through, Freight and Passenger Rates and other desired particulars.
A. N. BROWN, G. F. & P. A., E. P. N. E. SYSTEM, EL PASO, TEXAS.

THE DENVER & RIO GRANDE SYSTEM

Denver & Rio Grande, Rio Grande Western, Rio Grande & Santa Fe and Rio Grande Southern Railroads.

THE POPULAR LINE TO

Colorado Springs, Pueblo, Cripple Creek, Leadville, Glenwood Springs, Aspen, Grand Junction, Salt Lake City, Ogden, Butte, Helena, San Francisco, Los Angeles, Portland, Tacoma, and Seattle. Also Reaches all the Principal Towns and Mining Camps in Colorado, Utah and New Mexico.

THE TOURIST'S FAVORITE ROUTE

To all Mountain Resorts

The Only Line Passing Through Salt Lake City Enroute to the Pacific Coast

THROUGH
SLEEPING
CARS

BETWEEN DENVER AND

ALAMOSA SALT LAKE CITY
CRIPPLE CREEK OGDEN
LEADVILLE PORTLAND
GLENWOOD SPGS SAN FRANCISCO
GRAND JUNCT'N LOS ANGELES

DINING CARS SERVICE A LA CARTE ON ALL THROUGH TRAINS

J. A. EDSON, Manager,
Denver, Colo.
S. K. HOOPER, Gen'l Pass'r and Ticket Agent, Denver, Colo.

A. S. HUGHES, Gen'l Traffic Manager
Denver, Colo.

Tent City, Coronado Beach, California.



Go West to the Ocean

California's Summer Climate is the Finest in the World.

Cool Trip on the Santa Fe.

Surf-Bathing--Ocean Breezes--and the Snow-Capped Sierras.

You can buy a combination round trip ticket to San Diego this summer—including railroad and Pullman fare, meals en route, one day at the Grand Canyon, and two weeks' board and lodging at Coronado Tent City—at a very low price. Tent City is a popular Southern California summer seaside resort. Write for all particulars about this delightful vacation trip.

Atchison, Topeka &
Santa Fe Ry.

Santa Fe

City Ticket Office
Carson Block
Santa Fe, N. M.

4 IMPORTANT GATEWAYS 4



"No Trouble to Answer Questions."

TAKE THE "CANNON BALL" FAST TRAIN

This handsomely equipped train leaves El Paso daily and runs through to St. Louis without change, where direct connections are made for the North and East; also direct connections via Shreveport or New Orleans for all points in the Southeast.

Latest Pattern Pullman Buffet Sleepers
Elegant New Chair Cars--Seats Free
Solid Vestibuled Trians Throughout.

For descriptive pamphlet, or other information, call on or address

E. P. TURNER, G. P. & T. A., DALLAS, TEXAS.

R. W. CURTIS, S. W. P. A., EL PASO, TEXAS.

==SENSATIONAL SALE==

WE SET THE PACE, OTHERS FOLLOW

THE PRICES SPEAK FOR US.

Every article this season's best. Every piece at bargain prices. No such bargains ever before offered to the people of Santa Fe. The following, to close out at actual cost or below. We do not propose to carry over another season. Come quickly, to your advantage.

REFRIGERATORS.

Old Price.	New Price.
\$20.00	\$16.50
\$18.00	\$14.00
\$15.00	\$12.00

CROQUET SETS.

A few left, will close out at \$1.00 the set. Come early and get your picks and avoid the rush.

RUBBER AND COTTON HOSE.

Old Price.	New Price.
12 1-2c foot,	10c foot
11c foot,	9c foot

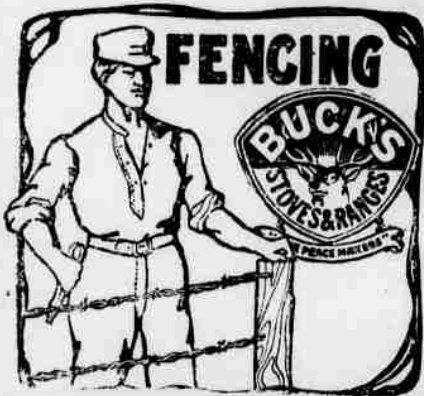
WATER COOLER AND FILTER.

\$5.00	\$3.50
\$4.25	\$2.75

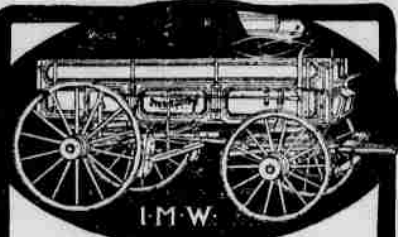
OSBORNE MOWER.

ONLY ONE LEFT

\$60.00	\$50.00
---------	---------



Let us put a nice iron fence around your house. Looks better, costs less, no repairs, lasts a lifetime. Why not have the best?

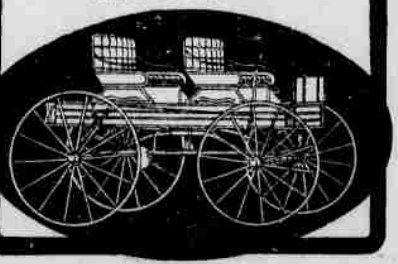


The Great West

has been made since the first Studebaker wagon was made. Indeed the Studebaker wagon helped to make the West. It has been one of the most efficient aids to the advancement of civilization by making transportation easy for the pioneer. Many of the first men in the West took the Studebaker with them. They are still buying Studebakers, having learned their value by experience. The Studebaker is better to-day than ever before.

Studebakers also make a full line of all kinds of vehicles, harness, etc. They control entire output of the World Buggy Co. and make the "Izzer Line" of vehicles. All dealers handle Studebaker goods. Write us for catalogues, etc.

Studebaker Bros. Mfg. Co.
South Bend, Ind.
WESTERN REPRESENTATIVES:
San Francisco, Cal. Portland, Oregon.
Salt Lake City, Utah.



BUCK'S STEEL RANGES.

SPECIAL FEATURES.

- Large fire-box and flue capacity.
- Ventilated fire-box, which cokes the coal.
- Top made in four sections instead of one.
- Key plates not bolted down.
- Duplex grates, which may be removed without disturbing fire lining or water heaters.
- Body made in one piece, planished blued steel and lined with asbestos.
- Large pouch feed and large feed for wood.
- Large ash-pan. Large, high closet.
- The ovens a distinct feature. Large and roomy, with white enamel lining.



PLUMBING AND TINNING.

We are now prepared to do up-to-date Sanitary Plumbing and Tin-work. We do first-class work and do it quickly. Get our bid before letting a contract. It will pay you.

SANTA FE HARDWARE & SUPPLY CO.

SANTA FE, N.M.

HONEST GOODS
HONEST PRICES

Jobbers and Retailers

OUR MOTTO:
LIVE, AND LET LIVE!

KEARNY'S PORTRAIT.

(Continued From First Page.)

the territory and providing it with a code of laws known as the Kearny code. He was ordered to Southern California, taking with him only a small contingent of the First Dragoons, the regiment he had organized at Jefferson Barracks, Mo. On reaching California he fought two battles with the Mexican General Pica, whom he defeated and drove into Old Mexico; and took possession of Los Angeles and San Diego, and was appointed the first military governor of California.

"As a Daughter of the American Revolution, whose members exceed forty thousand, and are engaged in the laudable endeavor to inspire present and future citizens with renewed patriotism through the memories of the heroic deeds and sacrifices of our ancestors by marking historic spots and rehearsing their heroic deeds, I feel grateful for the privilege of appearing before you today to present to the Historical Society of New Mexico a portrait of my father in his general's uniform, to be honored and placed among its historic archives, in the very room he occupied when he took possession of Santa Fe, and for which achievement and that of California he was breveted a major-general.

"Thanking you for the opportunity of meeting you and the enjoyable visit to the many interesting historic places which surround and adorn your ancient city, having the distinction of being the oldest city and capital in the United States, I shall leave Santa Fe with regret and hope to make a more extended visit in the future."

The portrait was received on behalf of the society by the president who assured the donor of the gift of the society's most grateful thanks and appreciation. Governor Prince also reviewed briefly the great work that General Kearny had accomplished and how greatly he had indebted not only New Mexico to him, but all the southwest.

Colonel J. Franco Chaves was then introduced and he told in a most interesting manner some personal reminiscences of General Kearny whom he, as a boy knew. Colonel Chaves laid particular stress on that part of General Kearny's character which demonstrated his great influence over men and his remarkable grasp of affairs. He spoke of his conciliation of the discordant factions and told how he had been able to conquer and annex a new territory of enormous area without the shedding of a drop of blood. He at once won the confidence of the people of the new land and his assurances of protection which were made were carried out in every detail. Colonel Chaves told of the methods pursued by the American commander and of the remarkable good that resulted from his course. He called in conference with him the representative men of the territory and with his promises he at once won their support and their hearty cooperation. Colonel Chaves told an incident connected with the taking of the formal possession of this city. It seems that among those who had assembled to learn of the American's intentions was an old lawyer of the city who was quite a prominent figure in the affairs of this country. When the proclamation was read announcing that the United States had taken formal possession of New Mexico the old lawyer calmly announced to General Kearny that he "was welcome."

Colonel Chaves, although quite young at the time, was very well acquainted with General Kearny, having been a schoolmate of the general's two sons at an academy at Fishkill-on-the-Hudson in the state of New York, for some time. He traveled with the general from Pawnee Forks, Kan., to this city. He was coming home from school on a merchant's wagon train which followed close the army of occupation under General Kearny's command. Colonel Chaves serving quite often at General Kearny's request as interpreter on the road and while the general was in Santa Fe. The description of Colonel Chaves of the arrival near this city of the American troops and their entry into town on the first day, the proclamation and firing of guns in the plaza on the second day, and the taking possession of the hills north of this city as a temporary garrison for the American troops, were very graphically and interestingly given. The expedition against the Navajos, which was organized here by General Kearny and sent out against that then very powerful tribe from this city, was narrated by Colonel Chaves and he gave incidents and reminiscences that proved of very great interest to the assembly.

Following the address of Colonel Chaves, Captain Aniceto Abeytia was presented and he gave a most interesting account of the arrival of the American troops in the city of Santa Fe. He spoke most entertainingly of the conditions that then existed and how the new authorities soon won the hearty support and the confidence of the inhabitants. He paid high tribute to General Kearny's abilities as a soldier and his diplomacy in treating with new and changed conditions. His address was much enjoyed.

On the motion of Judge Pope a committee was named to draw up a resolution of thanks to those who had participated and the chair appointed as a committee Judge Pope, J. D. Sena, and Colonel G. W. Knaebel.

WAS WITH GENERAL KEARNY.

Samuel G. Bean of Las Cruces Tells of Early Days in Santa Fe.

In connection with the presentation by Mrs. Western Bascome of a portrait in oil of her father, the late General Stephen W. Kearny, Samuel G. Bean, who was a private in Captain David Waldo's company, in Colonel Donophan's regiment, says:

"We had two artillery companies from St. Louis, all young men without training in that arm of the service. They drifted occasionally under experienced officers and became expert cannoniers. They managed their pieces like veterans and were the pride of Donophan's expedition. I am sorry that I have forgotten the names of both officers and privates—but think of fifty-five years ago, and you will not be surprised at my weak memory. These companies and their batteries had been left at Santa Fe and after our first battle at Brazito, we stopped in El Paso del Norte to wait their coming before we marched further into the country. We had to wait thirty-five days. When they came we resumed the eternal march again. Governor Armijo, who was general of the army, also made some preparation to meet us at the mouth of the canon before we got into Santa Fe, but he abandoned the position before we arrived there and we marched into the city without resistance. We got there about sunset, and placing our cannon into position, fired a few rounds into town. The people not knowing, thought we were bombarding the city and at first were much alarmed. But when they ascertained that we were only firing blank cartridges by way of taking formal possession their apprehensions entirely vanished. Santa Fe looked like it was on a boom—there were so many people. Besides our regiment there were 500 soldiers of the regular army and 500 teamsters and as many more camp followers and others attracted by curiosity to see the 'Spanish country' as it was then called in the states. It was rumored in the camp that we would soon have to go to the Navajo country, 300 miles to the northwest of Santa Fe and beyond the Sierra Madre mountains. These Indians had been life-long enemies of the Mexicans and kept them poor by wholesale robberies of their livestock on the Rio Grande. We let the Indians know there was a change of government, and they must cease their depredations or they would have to fight the United States. We barely had time to take a rest after arriving at Santa Fe until we received orders for the Navajo country."

HOTEL ARRIVALS.

Bon Ton: F. M. Hughes, Roy, N. M. Claire: Henry McCrea and wife, Albuquerque; W. M. Woody, Glen Woody; Lullie Hall, Sturges, Mich.; F. A. Manzanarez, Las Vegas; George E. Van Hezinger, Las Animas, Colo.; Henry Schuhart, Denver.

Palace: Mrs. S. C. Clarke, Mrs. Gus Alson, Madrid; C. L. Pollard, Espanola; George B. Brady, Truchas; Ernest Meyers, A. Singer, Albuquerque; Alexander Read, Tierra Amarilla; J. Hollingsworth, Denver; J. D. Wilson, St. Louis; R. B. Meyers, Albuquerque.

WANTS

AND MISCELLANEOUS ADS.

WANTED—By an experienced, cultured, healthy teacher from the east, a position on a ranch—Latin, English and music—for testimonials, address, Post-office Box No. 652, Roswell, N. M.

REWARD—Lost about a week ago, an umbrella with agate handle, covered with silver filigree. Liberal reward for return of umbrella complete or handle alone. Apply, New Mexican office.

TRAINED NURSE—Mrs. M. J. Thompson. Obstetrics and Surgery, 101 Palace Avenue.

FOR RENT—Furnished rooms with board, or suit of rooms for light housekeeping. Convenient and pleasant locality. Address P. O. Box 223.

Wanted—A man desiring outdoor employment to take charge of a fruit ranch near Espanola. L. B. Prince.

ANY one desiring male help of any kind please notify Alan R. McCord, Secretary Capital City Band.

FOR RENT—New 6 room cottage, bath, stationary range, and all conveniences. Inquire Claire Hotel.

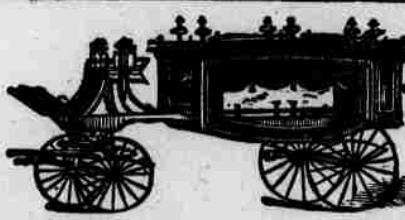
For Sale.
A POSITIVE Bargain. The Santa Fe Planing Mill, cause of sale old age. Apply P. Hesch, Santa Fe.

SHORT ORDERS
The finest, and the only first-class Short Order Restaurant in the City can be found by calling at the BON-TON. First-class cooks and waiters in attendance.

BOOKS AND STATIONERY,

Periodicals, School Books, School Supplies, Stationery Sundries, Etc.
CATHOLIC CATECHISMS AND PRAYER BOOKS IN SPANISH.
SPANISH NOVELS A SPECIALTY.

Books not in stock ordered at eastern prices; subscriptions taken for all periodicals
JACOB WELTMER



SCIENTIFIC EMBALMING

At Our Up-to-Date
Undertaking Parlors

The Latest Scientific Methods of Embalming are Employed. Calls Answered from the Parlors Day or Night or by DOROTEO SENA, Agua Fria Road. Our Parlors consist of a Nicely and Appropriately Fitted Up Suite at No. 112 Lincoln Avenue, West Side Plaza, Santa Fe, New Mexico.

DUDROW, KENNEDY & TOWNSEND, Props.

FRED MONTENIE

Scientific Embalmer and Funeral Director.

GOLD'S OLD CURIOSITY SHOP

ABE GOLD, Proprietor. ESTABLISHED 1869. JAKE GOLD, Manager.

Indian and Mexican Curios. Free Museum.

The largest and best stock of Indian Basket, Blankets, Pottery, Etc., in the country.

Mexican Drawn Work a Specialty.

Don't fail to call and see us when in the city. Send for a Catalogue.

311-317 San Francisco Street, Corner Burro Alley, Santa Fe, New Mexico.

