

11-1-1900

Albuquerque Daily Citizen, 11-01-1900

Hughes & McCreight

Follow this and additional works at: https://digitalrepository.unm.edu/abq_citizen_news

Recommended Citation

Hughes & McCreight. "Albuquerque Daily Citizen, 11-01-1900." (1900). https://digitalrepository.unm.edu/abq_citizen_news/1492

This Newspaper is brought to you for free and open access by the New Mexico Historical Newspapers at UNM Digital Repository. It has been accepted for inclusion in Albuquerque Citizen, 1891-1906 by an authorized administrator of UNM Digital Repository. For more information, please contact disc@unm.edu.

Job Printing
In all its numerous and diverse
branches done at THE CITIZEN
Rooms.

THE ALBUQUERQUE DAILY CITIZEN.

Book Binding
and Blank Book Work
promptly executed in good
style at THE CITIZEN
Building.

VOLUME 15.

ALBUQUERQUE, NEW MEXICO, THURSDAY AFTERNOON, OCTOBER 1, 1900.

NUMBER 4

THE EMPIRE STATE

Roosevelt Talks to New York Farmers.

Bryan Attempting to Enthusias Chicago Voters.

Powers Accept British-German China Agreement.

INDIANA SAFELY REPUBLICAN.

Buffalo, Nov. 1.—The Roosevelt special pulled out of Buffalo this morning bound for Jamestown, and scheduled to stop at many places along the route. The governor felt very well, his voice not appearing to have felt the strain of last night's three meetings.

Attica, N. Y., Nov. 1.—The first stop of Roosevelt today was made at Attica. The governor took notice of the advice given the democrats by Croker and Jones, criticizing them severely. "I should regret the election of Bryan as the greatest calamity that could fall upon this nation, but if Bryan has a plurality of but one vote in this state, its count will be protected by every force at the command of the executive, and the same measure of justice that we mete to others we shall see is meted to us in return."

BRYAN IN CHICAGO.

Chicago, Nov. 1.—Bryan will arrive here at 4 p. m. and an hour later he will address a business men's meeting at Lake Front. In the evening he will make eight speeches on the northwest side of the city. To-morrow he will make nine speeches and five Saturday, leaving here late Saturday night for Lincoln.

Delphi, Ind., Nov. 1.—En route to Chicago to-day Bryan addressed large crowds at Jamestown, Crawfordsville, Darlington, Delphi and other towns of this state. Here Bryan renewed his promise to call congress in extraordinary session in case his election to consider the Philippine question.

INDIANA SAFE.

Chicago, Nov. 1.—Harry S. New, national committee man of Indiana, who accompanied Senator Hanna to Port Wayne, yesterday, to-day, said: "Indiana is safely republican this year beyond a doubt. McKinley's majority will be greater than in 1896."

PRACTICALLY COMPLETED.

The British-German Agreement Accepted by the Powers.

Washington, Nov. 1.—The alignment of the powers on the British-German agreement is now practically complete, remaining to be heard from. As the matter stands, five of the powers are united in all the terms of the agreement, as follows: Great Britain, Germany, Italy, Austria, Japan and two powers, the United States and France, accept the clauses relating to the open door and territorial integrity of China but withhold action on the third clause relating to future procedure. The course of Russia is not known. The course of the United States is not known. An Associated Press London dispatch announces that Russia's reply is substantially the same as those of the United States and France.

"THE SIGNAL OF LIBERTY."

Great Play Last Night—"Under Two Flags" To-Night.

The Jesse Jones company presented the above play last night at Neher's opera house to a large and (to put it mildly) enthusiastic audience; an audience which made the casual observer imagine that the war with Spain was just about commencing. Instead of having been brought to a successful termination nearly two years ago. The scenes that will forever live in American history—the entrance of the Maine into Havana harbor, the attack on the American marines and destruction of the Maine were depicted with a realism that would have done credit to a higher priced show. The play is remarkably free from sensation for a melodrama, there being but one pistol

shot, one explosion and one allusion to the American flag, the latter being the gem of the entire play. W. J. Josey, the author, played Ralph Dunbar, the gallant young naval lieutenant, as (the) were a graduate of Annapolis. Miss Bernice Howard proved her claim to versatility by giving a remarkably clever interpretation of an up-to-date newspaper woman. Mr. Standfield was as usual an immense hit as the English correspondent studying American slang. The rest of the cast were far above the ordinary traveling stock company. The specialties were as usual, very entertaining.

To-night they present for the first time here a most successful dramatization of Ouida's most successful novel, "Under Two Flags." Miss Howard appears as "Clarette," and Mr. Josey as "Bertie Codd." The seats are going very rapidly.

THE RACE ISSUE.

Some Few Facts and Figures Worth Reading.

The managers of the democratic territorial campaign are confidently claiming the election of Laramie upon the race issue. They are doomed to defeat. Mr. Ferguson is travelling over the territory claiming that he was defeated two years ago upon the race issue, and that he proposes to pay the republicans back in their own kind. It is not true, in the first place, that Perea was elected upon any race issue. This proposition is a slander upon the Union people which they ought to resent. For the purpose of testing the truth of this proposition, we publish herewith a table of the vote cast for Perea in 1898 and for Perea in 1898, in the different counties in the territory.

County	1896	1898	Citizen Perea
Bernalillo	3060	3550	149
Chavez	101	146	45
Cofax	669	727	67
Dona Ana	1045	1286	241
Eddy	129	126	6
Grant	455	668	213
Guadalupe	450	598	128
Lincoln	464	536	72
Mora	1062	1147	65
Rio Arriba	1493	1684	212
San Juan	125	183	57
San Miguel	322	2402	70
Santa Fe	1673	1585	88
Sierra	183	317	129
Socorro	1205	1407	202
Taos	1015	1049	31
Union	375	535	160
Valencia	1815	1683	74

A comparison of this table will show that Perea increased his vote in the American counties over Catron by a larger percentage, taken as a whole, than it was increased in the so-called Mexican counties. This table gives the lie to the assertion of the democratic leaders.

The returns in 1898 show that Mr. Ferguson received large majorities in Albuquerque, Gallup and Bland. This is largely attributable to his personal acquaintance with the American people living in these towns and their desire to have a delegate elected to congress for local reasons and home pride.

The majorities in the different counties in 1898 are in the following:

County	Perea	Ferguson
Bernalillo	430	271
Chavez	101	146
Cofax	669	727
Dona Ana	1045	1286
Eddy	129	126
Grant	455	668
Guadalupe	450	598
Lincoln	464	536
Mora	1062	1147
Rio Arriba	1493	1684
San Juan	125	183
San Miguel	322	2402
Santa Fe	1673	1585
Sierra	183	317
Socorro	1205	1407
Taos	1015	1049
Union	375	535
Valencia	1815	1683

Total majorities .. 4232 .. 1809

Perea's net majority 2423

An examination of the vote by precincts over the territory at the last election will show that it ran upon party lines very generally, except that the great change in the election was caused by the fact that Felix Martinez organized in San Miguel county had dropped to pieces. Mr. Martinez having left the territory and almost entirely severed his connection with territorial politics.

Hon. W. B. Childers, Hon. M. S. Otero and Col. E. W. Dobson were passengers for Santa Fe this morning.

The finest \$2.50 flannel waist ever shown in the city at \$1.95 this week at Rosenwald Bros.

TRIED TO SUICIDE!

A Rice Forger Attempts Destruction.

Makes Confession and Implicates Lower Patrick.

Reported Murder in Dragon Mountains of Arizona.

WILL ASSIST MINISTER CONGER.

New York, Nov. 1.—Charles F. Jones, secretary and valet of the late William Marsh Rice, whose death occurred under suspicious circumstances, attempted suicide in the Tomba this morning. Jones was found in his cell at 4 a. m. almost unconscious from loss of blood. He had inflicted several cuts in his neck and severed the jugular vein on the right side. He had a small but keen knife. Surgeon at Bellevue hospital said Jones would recover. Jones was under examination yesterday by Assistant District Attorney Osborne and detectives. It was reported he made a statement of confession.

Assistant District Attorney Osborne said today that Jones said for him Tuesday and voluntarily made a statement to the effect that for some days prior to Rice's death, Rice, who was troubled with constipation, had been taking tablets of a grayish color given him by Patrick; that Patrick and Rice had been very intimate; that Sunday before his death Rice sent Jones to Patrick to demand certain papers in his possession; that Patrick then came to see Rice and gave Rice more medicine; that next morning Patrick again called and sent Jones for a doctor for Rice, who was very sick; that when he returned with the doctor Rice was dead; that Patrick took all Rice's papers and had the body embalmed; that Patrick then gave Jones two blank checks signed by Rice, which were placed in the hands of every distiller, saloon man and mate drunkard and is kept out of woman's hand. She is the recognized temperance factor in the world to-day (poor statesmanship that). Women are more law-abiding than men and it has never been denied that the class who best obey laws can best make them. If women are more temperate, more religious than men, and a government is effected along the line of the nature of the voters, surely the ballot in woman's hands would be good and not evil. The question is up to you men. If this is true and good logic see that when New Mexico is admitted as a state "the state" of New Mexico has a woman's right ballot without regard to previous condition."

ARIZONA CRIME.

A Young Mexican of Tombstone Mysteriously Murdered.

Phoenix, Ariz., Nov. 1.—News has reached here of the mysterious murder of Francisco Lopez, a young man of Tombstone. Lopez was a party of Mexicans at a wood camp in the Dragon mountains. He left the camp on a hunting expedition, and a few hours later his body was found some distance away with a bullet hole in the left side.

Will Assist Minister Conger.

Washington, D. C., Nov. 1.—Secretary Hay today called Commissioner Rockhill's appointment as counselor to the American legation in Pekin to assist Minister Conger in negotiations for a final settlement.

LAST NIGHT'S PARTIES.

Social Gatherings of Frolicsome Bachelors at Several Homes.

There were several jolly Halloween parties last night, at which all the old fashioned games were resurrected and played with great enjoyment. Old folks as well as young caught the spirit of the night of enchantment and prophecy, and the usual charms were worked and spirits invoked to gain a glimpse of the future. At midnight several well-known and popular young ladies were reported as having ascended staircases backward, with a lighted candle in each hand and a mirror in their right hand, to see the reflection of the face of their future husbands. This is only a sample of the many devices used to see what the future would bring. It is supposed that results were perfectly satisfactory, as the participants have a wise look on their faces to-day.

One pleasant crowd gathered at the hospitable home of Samuel Vann on North Third street, and with his daughter, Miss Florence as hostess, enjoyed themselves to the fullest extent. The variety of entertainment was startling—games from Mother Goose, shadow-graph scenes requiring descriptive character guesses for prizes, gained Miss Edith Everett a handsome souvenir spoon, and Mr. Fielden a booby prize. Miss Anderson sang some popular songs, and Miss Taylor entertained with instrumental music. A gypsy fortune teller revealed the future to those present with the most truthful facts based on accurate and true of the individual. All in all it was a most delightful gathering and will be long remembered by the large number of young folks present.

Another merry crowd gathered at the home of Miss Edith Niles, and spent the evening in games, music and reasonable enjoyment. There could not have been a more successful Halloween party anywhere was the verdict of all who were present.

Miss Birdie McClintock also entertained a party of friends at her home on West Railroad avenue. All the popular games were played and plenty of enjoyment derived therefrom. Dainty

refreshments were served by the hostess, who proved to be a charming entertainer.

Miss Frances Butts was the victim of a surprise party, organized by her friends, who came disguised as white caps and threatened to capture the young lady; but she turned the tables on them and captured them all by her hospitable entertainment. The evening was most pleasantly spent.

Without a doubt Halloween, 1900, was celebrated in a manner that will not soon be forgotten.

THE ELKS' CIRCUS.

Local Lodge Held a Meeting Last Night and Commenced Work.

A meeting of the local lodge of Elks was held last night, Messrs. Haskins and Day, who are here to assist the local lodge of Elks to present the circus, being present.

The various parts were assigned and a reading rehearsal held.

Committee for handling the various departments of the circus were appointed as follows:

Executive committee—Frank McKee, chairman; C. W. Medler, J. J. Sheridan, T. N. Wilkerson.

Parade committee—L. H. Chamberlain, first division, chairman; John S. Trimble, second division; W. H. Hahn, third division.

Press Agents—J. J. Sheridan and C. K. Newhall.

Stages, W. Haskins, J. R. Haynes.

Program committee—W. L. Hathaway, Fred Lewis, M. Mandell, Frank Hubbell.

Alfred Grunsfeld, Judge J. W. Crumpacker, J. H. Wroth, C. M. Foraker, J. F. Pearce, W. B. Childers, J. S. Hubbell.

These committees began active work to-day.

W. C. T. U. COLUMN.

About voting—An axiom in political economy runs, "In a republic the class that votes effects the government, along the lines of this same axiom nature has brought up the ballot to our government is strong in masculine traits but weak morally and spiritually. Now every lady admits women are more moral than men. It is even admitted she is too good, too pure to mix in politics, (rather unique cause for disenfranchisement that!) goodness and purity.) Women are more temperate than men, yet when a temperance question is brought up the ballot is placed in the hands of every distiller, saloon man and mate drunkard and is kept out of woman's hand. She is the recognized temperance factor in the world to-day (poor statesmanship that). Women are more law-abiding than men and it has never been denied that the class who best obey laws can best make them. If women are more temperate, more religious than men, and a government is effected along the line of the nature of the voters, surely the ballot in woman's hands would be good and not evil. The question is up to you men. If this is true and good logic see that when New Mexico is admitted as a state "the state" of New Mexico has a woman's right ballot without regard to previous condition."

THE BRUNSWICK 10 CENT CIGAR IS ALL RIGHT.

Try a Brunswick 10 cent cigar.

MONEY TO LOAN.

On diamonds, watches, etc., or any good security; also on household goods stored with me; strictly confidential. Highest cash prices paid for household goods.

T. A. WHITTEN, 114 Gold avenue.

IVES, THE FLORIST, Chrysanthemums, Roses, Carnations.

To Railroad Conductors.

We are making in our book-binders a stiff, leather cover, with pockets, for passenger and freight train books. Just the thing to keep the book in shape. Name and address stamped on inside of book. Sent to any address postpaid, on receipt of \$1.50. In ordering state whether cover is mounted for passenger or freight book. Address Bindery, Albuquerque, N. M.

ELEGANCE and

REFINEMENT,

In Furniture, as in everything is more to be desired than quantity without artistic effect. At our store there is nothing to be seen of the gaudy, tinsel-took-like-silver style, there is no such thing as a cheap suit—and so on down the list. That is an illustrative way of saying that we represent nothing but the best in the furniture line, strictly on its merits.

Furniture, Carpets and Pictures.

R. F. HELLWEG & CO.

NEW PHONE 194 NEXT TO POSTOFFICE.

WELLS MASTIFF SHOES. BEST LINE ON EARTH

School Shoes

That Wear.

It is hard to get School Shoes that are satisfactory because they get the hardest kind of wear. Our "Mastiff" and "Little Red School House" Shoes have an established reputation for durability and comfort.

We sell on small margins good shoes cheap, not cheap shoes.

THEO. MUENSTERMAN,

FOR MEN, BOYS AND YOUTHS WOMEN, MISSES AND CHILDREN

How can you get along without a

..WATCH..

We have been selling watches for 21 years and when you buy a watch of us you buy a guarantee with it, and Fox's guarantees are good.

We carry all the leading kinds, from the boys \$1.50 watch to the famous Patek Philippe.

NEW MEXICO'S LEADING JEWELRY HOUSE.

H. E. FOX,

By the way: When you want a Waterman Fountain Pen call and see us.

LIVELY BOERS!

Capture British Outpost and Hold Up Train.

Important Appointment Approved by Victoria.

President McKinley Will Receive Election News in Canton.

ANOTHER FATAL TEXAS STORM.

Cape Town, Nov. 1.—It transpired to-day that the Boer commando captured a British outpost of ninety men in the vicinity of Glesva, October 28, and afterwards took up the Cape Town mail train, looted the carriages and passengers, destroyed the mails, set fire to the train and decamped on the approach of an armed train. Not wishing to be hampered, the Boers later released the prisoners.

England's Official.

London, Nov. 1.—Queen Victoria has approved the appointment of Lord Salisbury as premier and lord privy of the seal; Marquis Lansdowne as secretary of state for foreign affairs; William St. John Broderick as secretary of state for war; Earl of Selborne as first lord of the admiralty; T. C. Ritchie as secretary of state for home affairs.

Will Remain in Canton.

Canton, Nov. 1.—President McKinley has decided to remain in Canton to receive the news of the election next Tuesday night and return to Washington Wednesday.

ANOTHER TEXAS STORM.

Wrecked Houses in Half a Dozen Counties and Killed People.

Dallas, Tex., Nov. 1.—Reports have been received from central Texas that Tuesday night's storm wrecked houses in Kilbuck, Ellis, Collin and Grayson counties. Three persons were killed and several seriously injured. Crops suffered severely.

ARIZONA NOTES.

The Eldest Product Sells at a Good Figure.

The first dates ever produced in the United States for market were raised by Mrs. S. D. Lount of Phoenix and were sold to a Phoenix customer for \$1. This year the date crop of the experiment station northwest of Phoenix was put up in neat packages and sold readily at 25 cents a peck. Mrs. Lount's tree this year produced 200 pounds of dates and from two trees at the experiment station there were gathered 250 and 200 pounds respectively.

Phoenix Gazette.

Judge Stansbury was a passenger for Chicago this morning. He will remain in Illinois until after the election, casting his vote for McKinley and Roosevelt.

Be sure to see our stock of men's, women's and children's underwear, before you buy. We can save you money on your underwear purchases. B. Ilfeld & Co.

The Brunswick 10 cent cigar is all right.

Try a Brunswick 10 cent cigar.

MONEY TO LOAN.

On diamonds, watches, etc., or any good security; also on household goods stored with me; strictly confidential. Highest cash prices paid for household goods.

T. A. WHITTEN, 114 Gold avenue.

IVES, THE FLORIST, Chrysanthemums, Roses, Carnations.

To Railroad Conductors.

We are making in our book-binders a stiff, leather cover, with pockets, for passenger and freight train books. Just the thing to keep the book in shape. Name and address stamped on inside of book. Sent to any address postpaid, on receipt of \$1.50. In ordering state whether cover is mounted for passenger or freight book. Address Bindery, Albuquerque, N. M.

ELEGANCE and

REFINEMENT,

In Furniture, as in everything is more to be desired than quantity without artistic effect. At our store there is nothing to be seen of the gaudy, tinsel-took-like-silver style, there is no such thing as a cheap suit—and so on down the list. That is an illustrative way of saying that we represent nothing but the best in the furniture line, strictly on its merits.

Furniture, Carpets and Pictures.

R. F. HELLWEG & CO.

NEW PHONE 194 NEXT TO POSTOFFICE.

WELLS MASTIFF SHOES. BEST LINE ON EARTH

School Shoes

That Wear.

It is hard to get School Shoes that are satisfactory because they get the hardest kind of wear. Our "Mastiff" and "Little Red School House" Shoes have an established reputation for durability and comfort.

We sell on small margins good shoes cheap, not cheap shoes.

THEO. MUENSTERMAN,

FOR MEN, BOYS AND YOUTHS WOMEN, MISSES AND CHILDREN

THE PHOENIX!

GRANT BUILDING.

Special Dress Goods' Sale, For One Week Only.

Now, the very beginning of the Dress Goods' Season, when every Lady is looking for something in New and Stylish Dress Goods to complete her fall and winter wardrobe. We make you a Special offer on our Entire Dress Goods' Stock; an offer we are sure you will appreciate and take advantage of. Every Dress Pattern you buy from us during this sale for \$5.00 we will give you findings to the amount of 75c. Every Dress Pattern you buy from \$5.00 to \$7.50 we will give you findings to the amount of \$1.25. Every Pattern you buy from \$7.50 to \$10.00 we will give findings to the amount of \$1.50. Every Pattern you buy from \$10.00 to \$12.50 we will give findings to the amount of \$1.75. And every Dress Pattern over \$12.50 we will give you findings to the amount of \$2.25. We make you this Special Offer For One Week Only, beginning Monday, Oct. 29, to call your attention to our elegant line of Dress Goods, which is much larger than ever before, and comprise all the newest and most novel creations in the Dress Goods' Market. If you attend this sale, we not only promise to show you the prettiest Dress Goods in Albuquerque, but Guarantee the prices to be Lower than you can buy them elsewhere. A great many of the prettiest things will be shown for the first time during this sale. We received our largest shipment of Dress Goods this season only a few days ago.

B. Ilfeld & Co.,

TELEPHONE NO. 259.

307 AND 309 WEST RAILROAD AVENUE.

ARE HAVING A "HOT TIME" IN THE EAST. The gentlemen of this section may be treated to a nice, comfortable time, also, by making an investment in a Nobby, New SUIT or OVERCOAT from our well-selected stock.

Mens' Fancy Cassimere Suits In neat stripes and plaids, only... and \$15

Mens' Blue and Black Cheviots Very dressy, only... and \$16

Mens' Overcoats All the newest productions in Kerseys, Coverts and Oxford, including the latest fad, the Raglan shoulder, at... \$8 to \$25

ASK FOR NELSON'S CELEBRATED \$3.50 SHOE

MANDELL & GRUNSFELD... THE LEADING CLOTHIERS OF NEW MEXICO

Agents for McALL BAZAAR PATTERNS. All Patterns 10 and 15c NONE HIGHER

THE ECONOMIST

Albuquerque, New Mexico.

Whether Your Choice

IS

OR

Your honest vote will be cast for us, if you give a moment to the consideration of OUR platform. Our Fall Stock stands for Everything Desirable—Style, Quality and Reasonableness of Prices. See Window Displays.

Special Sale. Lot 1. Of Ladies Walking Skirts made of Brilliantine, Grey Flannels, Homespuns, Serges, Broadcloths, some made like cut, some tailor-stitched, all new, stylish skirts, worth up to \$5.00, choice of any in this lot at... \$2.75

Lot 2. About 15 skirts made of Black, Blue and Grey Broadcloth, handsomely appliqued with Taffeta, also a few fine all wool Flannel Skirts, most of these skirts are left from due suits of which we have sold the jackets, and are worth up to \$15.00, choice of any in this lot only... \$5.50

French Flannels. A new line just received in all wool French Flannel, with silk embroidered polka dot, in all the shades, 27 inches wide, at... 90c per yard

Kid Glove Sale. Continued for 1 week more. Our regular 2-clasp Kid Glove, the \$1.00 quality, is only... \$0.50. The above cut represent our new \$1.00 Glove, with invisible fasteners, every pair warranted and guaranteed and priced only... \$1.00 per pair

Children's Wraps. Misses' and Children's Jackets, Box Coats and Golf Capes, also Infant's Long Cloaks. A new line just received. Children's Jackets, up from... \$1.25

Box Coats for Misses, up from 3.50

Infant's Elderdown Cloaks, up from... 1.50

Infant's Cloth Cloaks, up from 3.50

GILT TRIMMING. THE FAD OF THE DAY. WE HAVE THEM.

GILT SOUTACHE BRAID. GILT HERCULES BRAID. GILT SERPENTINE BRAID. GILT TUBULAR BRAIDS. GILT BUTTON BRAID. GILT AND BLACK GILT AND GREEN, GILT AND BLUE, GILT AND WHITE MIXED SERPENTINE BRAID.

GILT NECKWEAR. GILT BELTS. GILT ALLOVERS. GILT FASHIONABLES.

THE DAILY OUTLOOK

HUGHES & MCGREIGHT, Publishers
THOS. HUGHES, Editor
W. T. MCGREIGHT, Mgr. and City Ed.
PUBLISHED DAILY AND WEEKLY.

Associated Press Afternoon Telegrams
Largest City and County Circulation
Largest North Arizona Circulation

ALBUQUERQUE, — NOV 1 1900

National Republican Ticket



For President—
WILLIAM MCKINLEY,
OF OHIO.
For Vice President—
THEODORE ROOSEVELT,
OF NEW YORK.

TERRITORIAL REPUBLICAN TICKET



For Delegate to Congress—
BERNARD S. RODEY,
of Albuquerque.



For Delegate to Congress—
BERNARD S. RODEY,
of Albuquerque.



For Delegate to Congress—
BERNARD S. RODEY,
of Albuquerque.

County Republican Ticket.
Council,
For Bernalillo and McKinley counties,
DR. G. W. HARRISON,
For Bernalillo County,
THOMAS HUGHES.

Representatives,
EMILIANO GUTIERREZ,
VENECIANDO CHAVEZ,
For Bernalillo County,
ALEX. BOWIE,
For Bernalillo and McKinley counties.

School Superintendent,
FRANK A. HUBBELL.
Probate Clerk,
JAMES A. SUMMERS.

Treasurer and Collector,
CHARLES K. NEWHALL.
Sheriff,
T. S. HUBBELL.
Assessor,
ALEJANDRO RANZAVOL.

County Commissioners,
E. A. MIERA,
First District,
J. L. MILLER,
Second District,
R. W. HOPKINS,
Third District.

Probate Judge,
ESQUIVELA BACA.
Surveyor,
J. R. FARWELL.
River Commissioners,
EPIMENIO TAPAYO,
FRANCISCO GONZALES,
RAFAEL CHAVEZ,
RUMALDO M. Y. ARDODACO,
FRANCISCO GABALDON.

As a democratic leader Mr. Peren is not a brilliant success.

Byran's defeat is conceded by everybody who is anybody.

The next legislature will have a two-thirds republican majority.

The republicans held a rousing meeting at Bernalillo yesterday.

Frank McKee's name will not appear on the next Burkhardt circular.

Mr. Burkhardt is said to be diligently laboring on a circular explaining to the people why he has this.

Santa Fe republicans are having a few local discussions, but they are united in their support of Mr. Rodey.

Thos. D. Burns and the republicans of Rio Arriba county are sure to carry that county for Mr. Rodey by at least 600 majority.

en. This magazine has been enlarged to 128 pages and presents a very diverse table of contents upon which subjects by lay and medical writers. Send for a copy to the Psychiatric Research Company, Chicago.

The people of this territory cannot vote too many precautions regarding the public schools. Mr. Hinkle, who eight years ago in the legislature, tried his best to pass a law taking the school funds of the towns and distributing them in the country districts, is a candidate for the council and will be elected. He will again introduce his pet bill, and it will take good work to prevent its passage. The republican legislative delegation from this county, pledged to favor the present law, protecting the school fund of this city. This is an important question. In fact, it is of vital interest to the people of Albuquerque.

In 1887 Thomas Hughes introduced a bill in the territorial council creating a public school system in New Mexico. It was the first bill of that kind introduced in this territory. The bill met with bitter opposition from Pedro Perea, and he killed it. The present public school law was adopted in 1889.

The voters of this city should resolve to get to the polls next Tuesday early in the morning. There are only two voting precincts, and in the afternoon there are such crowds waiting to vote that many fail to get the opportunity to cast their ballots.

For years the democrats of this city alleged that Pedro Perea and M. S. Otero were robbing the county. Now they turn about and insist that they are good men, and actually make them the leaders of the democratic party in this county.

The big railroad machine shops of this city is convincing proof of republican property. The shops are so crowded with work that the 600 men employed there can be spared only a very short time to enable them to vote next Tuesday.

Practically all American missionaries who have been to the Orient believe in expansion. They know the situation in the far east, and they appreciate the importance of maintaining the rights and the dignity of the United States in that quarter of the world.

The Optic intimates that we shall never see another man like Larrasolo. This is a campaign falsehood. The cactus crowned man of New Mexico will always be crowned by one-horse layers of the Larrasolo type.

It was supposed that some ideas of civilization had been to the Orient; believe in expansion. They know the situation in the far east, and they appreciate the importance of maintaining the rights and the dignity of the United States in that quarter of the world.

The republicans of this city and county are making a splendid campaign. They are not weighed down by Pedro Perea, and have a ticket made up of good men, every one of whom are friends of this city.

Frank A. Hubbell is a successful political manager, and as chairman of the territorial republican committee, he is doing his best to lead the success of Mr. Rodey.

Our friend Chas. A. Spiess is making a wonderfully successful campaign in San Miguel County. He will represent that county in the next territorial council.

HEIGHT OF ARIZONA MOUNTAINS.
Humphrey's Peak Nearly Thirteen Thousand Feet High.

The height and distances of some well-known points have been measured in a recent survey near Flagstaff, says the Sun.

Taking the depot floor as a standard, 6,875 feet above sea level, the sidewalk in front of P. M. Weatherford's residence is eight feet higher or 6,875 feet. The floor of the observatory is 345 feet higher yet, or 7,220 feet above sea level, and distant 4,960 in an air line as the bird flies. By road it is probably within a few feet of a mile.

Agassiz Peak, up which Doyle's trail goes, 5,445 feet above the sidewalk in front of Mr. Weatherford's, or 15,330 feet above the sea within about 5 feet. From the Methodist church the air line is exactly 9 miles. The lower peak to the east, Fremont, is 4,465 feet lower than Agassiz, and distant 160 feet less than one mile, making it 11,825 feet and 5 1/2 miles from the Methodist church.

Humphrey's peak, the highest point in 1 1/2 miles from Agassiz and 279 feet higher, making it 12,596 feet above the sea, and 10 1/4 miles from the Methodist church.

By road of course, these distances from town are two or three miles longer.

Largest Armor Plate.
What is probably the largest single armor plate in the world is being constructed of the battleship Wisconsin. The plate will become the port plate of a turret on the vessel and is being cut at an angle instead of being cut in a circle, the idea being to better deflect a shot. What the armor plate is to a battleship, Hostetter's Stomach Bitters is to the stomach. It resists the attack of constipation, indigestion, dyspepsia, biliousness, and prevents malaria, fever and ague. I will restore a weak stomach to normal conditions. Any one troubled with the above ailments will do well to try the Bitters at once. For fifty years it has stood alone while its many imitators have fallen.

Notice.
We have adopted the principle of home cooking. Try one meal and you will be convinced. Single meals, 25 cents. Most tickets, 14c.

AMERICAN DINING PARLORS,
214 West Gold avenue.

KNIGHT-H. S. KNIGHT.
Will give you more than any one else for second-hand furniture. Do not sell until I have made you a price. If you have real estate to sell, list it with me. If you want to buy, I have just what you are looking for. Especial bargain in a fine brick home near the shops. An. on North Second street. Have for sale cheap a total new National cash register, in fine condition, 24-horse power portable engine and boiler in good condition, burglar and fire-proof safe, hide press, office furnishings, Fairbanks washboard scale, capacity 1,000 pounds, stock of millinery and toys, horses, buggies, pianos, billiard and pool tables, a magnificent family horse, harness and buggy. The horse is well bred, stands 16 hands high, is coal black, weighs 1,100 pounds, is between 6 and 7 years old, and perfectly sound, and a 10-year old child can handle him as she would a kitten. I make a specialty of buying and selling all kinds of household goods, and am a dealer in hardware store, Armijo building. If not there, call No. 122, new telephone.

QUARANTINE PROCLAIMED

Ordered Against Cattle From Sections of Texas and Mexico.

PROTECTION AGAINST TEXAS FEVER.

Governor Otero this forenoon issued the following proclamation:
Territory of New Mexico, Santa Fe, Executive Office, October 31, 1900. Whereas, It has been represented to the undersigned, the governor of the territory of New Mexico, by the cattle sanitary board of said territory, that the bureau of animal industry of the United States, by its order No. 16, dated in Washington, D. C., October 3, 1899, and December 31, 1900, cattle from an area designated, including New Mexico, may be moved upon authority procured from the proper authorities of the state or territory to which they are being moved, and that such restriction other than may be enforced by the local authorities at the points of destination; and

Whereas, It has come to the knowledge of said cattle sanitary board that cattle from below the section mentioned in said federal quarantine order, are infested with living fever ticks (Diplophilia Doriae) that are known to carry the infection of Texas fever; and during the months of November and February, thereby endangering the health of the cattle which they come in contact with in the territory of New Mexico; and

Whereas, The said cattle sanitary board has requested the undersigned as governor to issue his proclamation establishing the quarantine line against such infested cattle and to enforce the same; and the undersigned, in pursuance of the laws of the territory of New Mexico, and the same to be continued in full force and effect from November 1, 1900, to the 30th day of March, 1901.

Now, therefore, I, the undersigned, Miguel A. Otero, governor of the territory of New Mexico, do proclaim and establish hereby a quarantine against Texas fever, by the carrying of cattle from the northwestern corner of Taylor county, thence along the north line of San Juan and Mitchell counties to the northwestern corner of the county of Wilchita, thence running due south along the western line of Wilchita and Archer counties to the northwestern corner of Throckmorton county; thence due west to the northwest corner of said county; thence due south to the southwestern corner of Throckmorton county; thence due west to the northwestern corner of Taylor county; thence along the north line of San Juan and Mitchell counties to the northwestern corner of the county of Wilchita, thence running due south along the western line of Wilchita and Archer counties to the northwestern corner of Throckmorton county; thence due west to the northwest corner of said county; thence due south to the southwestern corner of Throckmorton county; thence due west to the northwestern corner of Taylor county; thence along the north line of San Juan and Mitchell counties to the northwestern corner of the county of Wilchita, thence running due south along the western line of Wilchita and Archer counties to the northwestern corner of Throckmorton county; thence due west to the northwest corner of said county; thence due south to the southwestern corner of Throckmorton county; thence due west to the northwestern corner of Taylor county; thence along the north line of San Juan and Mitchell counties to the northwestern corner of the county of Wilchita, thence running due south along the western line of Wilchita and Archer counties to the northwestern corner of Throckmorton county; thence due west to the northwest corner of said county; thence due south to the southwestern corner of Throckmorton county; thence due west to the northwestern corner of Taylor county; thence along the north line of San Juan and Mitchell counties to the northwestern corner of the county of Wilchita, thence running due south along the western line of Wilchita and Archer counties to the northwestern corner of Throckmorton county; thence due west to the northwest corner of said county; thence due south to the southwestern corner of Throckmorton county; thence due west to the northwestern corner of Taylor county; thence along the north line of San Juan and Mitchell counties to the northwestern corner of the county of Wilchita, thence running due south along the western line of Wilchita and Archer counties to the northwestern corner of Throckmorton county; thence due west to the northwest corner of said county; thence due south to the southwestern corner of Throckmorton county; thence due west to the northwestern corner of Taylor county; thence along the north line of San Juan and Mitchell counties to the northwestern corner of the county of Wilchita, thence running due south along the western line of Wilchita and Archer counties to the northwestern corner of Throckmorton county; thence due west to the northwest corner of said county; thence due south to the southwestern corner of Throckmorton county; thence due west to the northwestern corner of Taylor county; thence along the north line of San Juan and Mitchell counties to the northwestern corner of the county of Wilchita, thence running due south along the western line of Wilchita and Archer counties to the northwestern corner of Throckmorton county; thence due west to the northwest corner of said county; thence due south to the southwestern corner of Throckmorton county; thence due west to the northwestern corner of Taylor county; thence along the north line of San Juan and Mitchell counties to the northwestern corner of the county of Wilchita, thence running due south along the western line of Wilchita and Archer counties to the northwestern corner of Throckmorton county; thence due west to the northwest corner of said county; thence due south to the southwestern corner of Throckmorton county; thence due west to the northwestern corner of Taylor county; thence along the north line of San Juan and Mitchell counties to the northwestern corner of the county of Wilchita, thence running due south along the western line of Wilchita and Archer counties to the northwestern corner of Throckmorton county; thence due west to the northwest corner of said county; thence due south to the southwestern corner of Throckmorton county; thence due west to the northwestern corner of Taylor county; thence along the north line of San Juan and Mitchell counties to the northwestern corner of the county of Wilchita, thence running due south along the western line of Wilchita and Archer counties to the northwestern corner of Throckmorton county; thence due west to the northwest corner of said county; thence due south to the southwestern corner of Throckmorton county; thence due west to the northwestern corner of Taylor county; thence along the north line of San Juan and Mitchell counties to the northwestern corner of the county of Wilchita, thence running due south along the western line of Wilchita and Archer counties to the northwestern corner of Throckmorton county; thence due west to the northwest corner of said county; thence due south to the southwestern corner of Throckmorton county; thence due west to the northwestern corner of Taylor county; thence along the north line of San Juan and Mitchell counties to the northwestern corner of the county of Wilchita, thence running due south along the western line of Wilchita and Archer counties to the northwestern corner of Throckmorton county; thence due west to the northwest corner of said county; thence due south to the southwestern corner of Throckmorton county; thence due west to the northwestern corner of Taylor county; thence along the north line of San Juan and Mitchell counties to the northwestern corner of the county of Wilchita, thence running due south along the western line of Wilchita and Archer counties to the northwestern corner of Throckmorton county; thence due west to the northwest corner of said county; thence due south to the southwestern corner of Throckmorton county; thence due west to the northwestern corner of Taylor county; thence along the north line of San Juan and Mitchell counties to the northwestern corner of the county of Wilchita, thence running due south along the western line of Wilchita and Archer counties to the northwestern corner of Throckmorton county; thence due west to the northwest corner of said county; thence due south to the southwestern corner of Throckmorton county; thence due west to the northwestern corner of Taylor county; thence along the north line of San Juan and Mitchell counties to the northwestern corner of the county of Wilchita, thence running due south along the western line of Wilchita and Archer counties to the northwestern corner of Throckmorton county; thence due west to the northwest corner of said county; thence due south to the southwestern corner of Throckmorton county; thence due west to the northwestern corner of Taylor county; thence along the north line of San Juan and Mitchell counties to the northwestern corner of the county of Wilchita, thence running due south along the western line of Wilchita and Archer counties to the northwestern corner of Throckmorton county; thence due west to the northwest corner of said county; thence due south to the southwestern corner of Throckmorton county; thence due west to the northwestern corner of Taylor county; thence along the north line of San Juan and Mitchell counties to the northwestern corner of the county of Wilchita, thence running due south along the western line of Wilchita and Archer counties to the northwestern corner of Throckmorton county; thence due west to the northwest corner of said county; thence due south to the southwestern corner of Throckmorton county; thence due west to the northwestern corner of Taylor county; thence along the north line of San Juan and Mitchell counties to the northwestern corner of the county of Wilchita, thence running due south along the western line of Wilchita and Archer counties to the northwestern corner of Throckmorton county; thence due west to the northwest corner of said county; thence due south to the southwestern corner of Throckmorton county; thence due west to the northwestern corner of Taylor county; thence along the north line of San Juan and Mitchell counties to the northwestern corner of the county of Wilchita, thence running due south along the western line of Wilchita and Archer counties to the northwestern corner of Throckmorton county; thence due west to the northwest corner of said county; thence due south to the southwestern corner of Throckmorton county; thence due west to the northwestern corner of Taylor county; thence along the north line of San Juan and Mitchell counties to the northwestern corner of the county of Wilchita, thence running due south along the western line of Wilchita and Archer counties to the northwestern corner of Throckmorton county; thence due west to the northwest corner of said county; thence due south to the southwestern corner of Throckmorton county; thence due west to the northwestern corner of Taylor county; thence along the north line of San Juan and Mitchell counties to the northwestern corner of the county of Wilchita, thence running due south along the western line of Wilchita and Archer counties to the northwestern corner of Throckmorton county; thence due west to the northwest corner of said county; thence due south to the southwestern corner of Throckmorton county; thence due west to the northwestern corner of Taylor county; thence along the north line of San Juan and Mitchell counties to the northwestern corner of the county of Wilchita, thence running due south along the western line of Wilchita and Archer counties to the northwestern corner of Throckmorton county; thence due west to the northwest corner of said county; thence due south to the southwestern corner of Throckmorton county; thence due west to the northwestern corner of Taylor county; thence along the north line of San Juan and Mitchell counties to the northwestern corner of the county of Wilchita, thence running due south along the western line of Wilchita and Archer counties to the northwestern corner of Throckmorton county; thence due west to the northwest corner of said county; thence due south to the southwestern corner of Throckmorton county; thence due west to the northwestern corner of Taylor county; thence along the north line of San Juan and Mitchell counties to the northwestern corner of the county of Wilchita, thence running due south along the western line of Wilchita and Archer counties to the northwestern corner of Throckmorton county; thence due west to the northwest corner of said county; thence due south to the southwestern corner of Throckmorton county; thence due west to the northwestern corner of Taylor county; thence along the north line of San Juan and Mitchell counties to the northwestern corner of the county of Wilchita, thence running due south along the western line of Wilchita and Archer counties to the northwestern corner of Throckmorton county; thence due west to the northwest corner of said county; thence due south to the southwestern corner of Throckmorton county; thence due west to the northwestern corner of Taylor county; thence along the north line of San Juan and Mitchell counties to the northwestern corner of the county of Wilchita, thence running due south along the western line of Wilchita and Archer counties to the northwestern corner of Throckmorton county; thence due west to the northwest corner of said county; thence due south to the southwestern corner of Throckmorton county; thence due west to the northwestern corner of Taylor county; thence along the north line of San Juan and Mitchell counties to the northwestern corner of the county of Wilchita, thence running due south along the western line of Wilchita and Archer counties to the northwestern corner of Throckmorton county; thence due west to the northwest corner of said county; thence due south to the southwestern corner of Throckmorton county; thence due west to the northwestern corner of Taylor county; thence along the north line of San Juan and Mitchell counties to the northwestern corner of the county of Wilchita, thence running due south along the western line of Wilchita and Archer counties to the northwestern corner of Throckmorton county; thence due west to the northwest corner of said county; thence due south to the southwestern corner of Throckmorton county; thence due west to the northwestern corner of Taylor county; thence along the north line of San Juan and Mitchell counties to the northwestern corner of the county of Wilchita, thence running due south along the western line of Wilchita and Archer counties to the northwestern corner of Throckmorton county; thence due west to the northwest corner of said county; thence due south to the southwestern corner of Throckmorton county; thence due west to the northwestern corner of Taylor county; thence along the north line of San Juan and Mitchell counties to the northwestern corner of the county of Wilchita, thence running due south along the western line of Wilchita and Archer counties to the northwestern corner of Throckmorton county; thence due west to the northwest corner of said county; thence due south to the southwestern corner of Throckmorton county; thence due west to the northwestern corner of Taylor county; thence along the north line of San Juan and Mitchell counties to the northwestern corner of the county of Wilchita, thence running due south along the western line of Wilchita and Archer counties to the northwestern corner of Throckmorton county; thence due west to the northwest corner of said county; thence due south to the southwestern corner of Throckmorton county; thence due west to the northwestern corner of Taylor county; thence along the north line of San Juan and Mitchell counties to the northwestern corner of the county of Wilchita, thence running due south along the western line of Wilchita and Archer counties to the northwestern corner of Throckmorton county; thence due west to the northwest corner of said county; thence due south to the southwestern corner of Throckmorton county; thence due west to the northwestern corner of Taylor county; thence along the north line of San Juan and Mitchell counties to the northwestern corner of the county of Wilchita, thence running due south along the western line of Wilchita and Archer counties to the northwestern corner of Throckmorton county; thence due west to the northwest corner of said county; thence due south to the southwestern corner of Throckmorton county; thence due west to the northwestern corner of Taylor county; thence along the north line of San Juan and Mitchell counties to the northwestern corner of the county of Wilchita, thence running due south along the western line of Wilchita and Archer counties to the northwestern corner of Throckmorton county; thence due west to the northwest corner of said county; thence due south to the southwestern corner of Throckmorton county; thence due west to the northwestern corner of Taylor county; thence along the north line of San Juan and Mitchell counties to the northwestern corner of the county of Wilchita, thence running due south along the western line of Wilchita and Archer counties to the northwestern corner of Throckmorton county; thence due west to the northwest corner of said county; thence due south to the southwestern corner of Throckmorton county; thence due west to the northwestern corner of Taylor county; thence along the north line of San Juan and Mitchell counties to the northwestern corner of the county of Wilchita, thence running due south along the western line of Wilchita and Archer counties to the northwestern corner of Throckmorton county; thence due west to the northwest corner of said county; thence due south to the southwestern corner of Throckmorton county; thence due west to the northwestern corner of Taylor county; thence along the north line of San Juan and Mitchell counties to the northwestern corner of the county of Wilchita, thence running due south along the western line of Wilchita and Archer counties to the northwestern corner of Throckmorton county; thence due west to the northwest corner of said county; thence due south to the southwestern corner of Throckmorton county; thence due west to the northwestern corner of Taylor county; thence along the north line of San Juan and Mitchell counties to the northwestern corner of the county of Wilchita, thence running due south along the western line of Wilchita and Archer counties to the northwestern corner of Throckmorton county; thence due west to the northwest corner of said county; thence due south to the southwestern corner of Throckmorton county; thence due west to the northwestern corner of Taylor county; thence along the north line of San Juan and Mitchell counties to the northwestern corner of the county of Wilchita, thence running due south along the western line of Wilchita and Archer counties to the northwestern corner of Throckmorton county; thence due west to the northwest corner of said county; thence due south to the southwestern corner of Throckmorton county; thence due west to the northwestern corner of Taylor county; thence along the north line of San Juan and Mitchell counties to the northwestern corner of the county of Wilchita, thence running due south along the western line of Wilchita and Archer counties to the northwestern corner of Throckmorton county; thence due west to the northwest corner of said county; thence due south to the southwestern corner of Throckmorton county; thence due west to the northwestern corner of Taylor county; thence along the north line of San Juan and Mitchell counties to the northwestern corner of the county of Wilchita, thence running due south along the western line of Wilchita and Archer counties to the northwestern corner of Throckmorton county; thence due west to the northwest corner of said county; thence due south to the southwestern corner of Throckmorton county; thence due west to the northwestern corner of Taylor county; thence along the north line of San Juan and Mitchell counties to the northwestern corner of the county of Wilchita, thence running due south along the western line of Wilchita and Archer counties to the northwestern corner of Throckmorton county; thence due west to the northwest corner of said county; thence due south to the southwestern corner of Throckmorton county; thence due west to the northwestern corner of Taylor county; thence along the north line of San Juan and Mitchell counties to the northwestern corner of the county of Wilchita, thence running due south along the western line of Wilchita and Archer counties to the northwestern corner of Throckmorton county; thence due west to the northwest corner of said county; thence due south to the southwestern corner of Throckmorton county; thence due west to the northwestern corner of Taylor county; thence along the north line of San Juan and Mitchell counties to the northwestern corner of the county of Wilchita, thence running due south along the western line of Wilchita and Archer counties to the northwestern corner of Throckmorton county; thence due west to the northwest corner of said county; thence due south to the southwestern corner of Throckmorton county; thence due west to the northwestern corner of Taylor county; thence along the north line of San Juan and Mitchell counties to the northwestern corner of the county of Wilchita, thence running due south along the western line of Wilchita and Archer counties to the northwestern corner of Throckmorton county; thence due west to the northwest corner of said county; thence due south to the southwestern corner of Throckmorton county; thence due west to the northwestern corner of Taylor county; thence along the north line of San Juan and Mitchell counties to the northwestern corner of the county of Wilchita, thence running due south along the western line of Wilchita and Archer counties to the northwestern corner of Throckmorton county; thence due west to the northwest corner of said county; thence due south to the southwestern corner of Throckmorton county; thence due west to the northwestern corner of Taylor county; thence along the north line of San Juan and Mitchell counties to the northwestern corner of the county of Wilchita, thence running due south along the western line of Wilchita and Archer counties to the northwestern corner of Throckmorton county; thence due west to the northwest corner of said county; thence due south to the southwestern corner of Throckmorton county; thence due west to the northwestern corner of Taylor county; thence along the north line of San Juan and Mitchell counties to the northwestern corner of the county of Wilchita, thence running due south along the western line of Wilchita and Archer counties to the northwestern corner of Throckmorton county; thence due west to the northwest corner of said county; thence due south to the southwestern corner of Throckmorton county; thence due west to the northwestern corner of Taylor county; thence along the north line of San Juan and Mitchell counties to the northwestern corner of the county of Wilchita, thence running due south along the western line of Wilchita and Archer counties to the northwestern corner of Throckmorton county; thence due west to the northwest corner of said county; thence due south to the southwestern corner of Throckmorton county; thence due west to the northwestern corner of Taylor county; thence along the north line of San Juan and Mitchell counties to the northwestern corner of the county of Wilchita, thence running due south along the western line of Wilchita and Archer counties to the northwestern corner of Throckmorton county; thence due west to the northwest corner of said county; thence due south to the southwestern corner of Throckmorton county; thence due west to the northwestern corner of Taylor county; thence along the north line of San Juan and Mitchell counties to the northwestern corner of the county of Wilchita, thence running due south along the western line of Wilchita and Archer counties to the northwestern corner of Throckmorton county; thence due west to the northwest corner of said county; thence due south to the southwestern corner of Throckmorton county; thence due west to the northwestern corner of Taylor county; thence along the north line of San Juan and Mitchell counties to the northwestern corner of the county of Wilchita, thence running due south along the western line of Wilchita and Archer counties to the northwestern corner of Throckmorton county; thence due west to the northwest corner of said county; thence due south to the southwestern corner of Throckmorton county; thence due west to the northwestern corner of Taylor county; thence along the north line of San Juan and Mitchell counties to the northwestern corner of the county of Wilchita, thence running due south along the western line of Wilchita and Archer counties to the northwestern corner of Throckmorton county; thence due west to the northwest corner of said county; thence due south to the southwestern corner of Throckmorton county; thence due west to the northwestern corner of Taylor county; thence along the north line of San Juan and Mitchell counties to the northwestern corner of the county of Wilchita, thence running due south along the western line of Wilchita and Archer counties to the northwestern corner of Throckmorton county; thence due west to the northwest corner of said county; thence due south to the southwestern corner of Throckmorton county; thence due west to the northwestern corner of Taylor county; thence along the north line of San Juan and Mitchell counties to the northwestern corner of the county of Wilchita, thence running due south along the western line of Wilchita and Archer counties to the northwestern corner of Throckmorton county; thence due west to the northwest corner of said county; thence due south to the southwestern corner of Throckmorton county; thence due west to the northwestern corner of Taylor county; thence along the north line of San Juan and Mitchell counties to the northwestern corner of the county of Wilchita, thence running due south along the western line of Wilchita and Archer counties to the northwestern corner of Throckmorton county; thence due west to the northwest corner of said county; thence due south to the southwestern corner of Throckmorton county; thence due west to the northwestern corner of Taylor county; thence along the north line of San Juan and Mitchell counties to the northwestern corner of the county of Wilchita, thence running due south along the western line of Wilchita and Archer counties to the northwestern corner of Throckmorton county; thence due west to the northwest corner of said county; thence due south to the southwestern corner of Throckmorton county; thence due west to the northwestern corner of Taylor county; thence along the north line of San Juan and Mitchell counties to the northwestern corner of the county of Wilchita, thence running due south along the western line of Wilchita and Archer counties to the northwestern corner of Throckmorton county; thence due west to the northwest corner of said county; thence due south to the southwestern corner of Throckmorton county; thence due west to the northwestern corner of Taylor county; thence along the north line of San Juan and Mitchell counties to the northwestern corner of the county of Wilchita, thence running due south along the western line of Wilchita and Archer counties to the northwestern corner of Throckmorton county; thence due west to the northwest corner of said county; thence due south to the southwestern corner of Throckmorton county; thence due west to the northwestern corner of Taylor county; thence along the north line of San Juan and Mitchell counties to the northwestern corner of the county of Wilchita, thence running due south along the western line of Wilchita and Archer counties to the northwestern corner of Throckmorton county; thence due west to the northwest corner of said county; thence due south to the southwestern corner of Throckmorton county; thence due west to the northwestern corner of Taylor county; thence along the north line of San Juan and Mitchell counties to the northwestern corner of the county of Wilchita, thence running due south along the western line of Wilchita and Archer counties to the northwestern corner of Throckmorton county; thence due west to the northwest corner of said county; thence due south to the southwestern corner of Throckmorton county; thence due west to the northwestern corner of Taylor county; thence along the north line of San Juan and Mitchell counties to the northwestern corner of the county of Wilchita, thence running due south along the western line of Wilchita and Archer counties to the northwestern corner of Throckmorton county; thence due west to the northwest corner of said county; thence due south to the southwestern corner of Throckmorton county; thence due west to the northwestern corner of Taylor county; thence along the north line of San Juan and Mitchell counties to the northwestern corner of the county of Wilchita, thence running due south along the western line of Wilchita and Archer counties to the northwestern corner of Throckmorton county; thence due west to the northwest corner of said county; thence due south to the southwestern corner of Throckmorton county; thence due west to the northwestern corner of Taylor county; thence along the north line of San Juan and Mitchell counties to the northwestern corner of the county of Wilchita, thence running due south along the western line of Wilchita and Archer counties to the northwestern corner of Throckmorton county; thence due west to the northwest corner of said county; thence due south to the southwestern corner of Throckmorton county; thence due west to the northwestern corner of Taylor county; thence along the north line of San Juan and Mitchell counties to the northwestern corner of the county of Wilchita, thence running due south along the western line of Wilchita and Archer counties to the northwestern corner of Throckmorton county; thence due west to the northwest corner of said county; thence due south to the southwestern corner of Throckmorton county; thence due west to the northwestern corner of Taylor county; thence along the north line of San Juan and Mitchell counties to the northwestern corner of the county of Wilchita, thence running due south along the western line of Wilchita and Archer counties to the northwestern corner of Throckmorton county; thence due west to the northwest corner of said county; thence due south to the southwestern corner of Throckmorton county; thence due west to the northwestern corner of Taylor county; thence along the north line of San Juan and Mitchell counties to the northwestern corner of the county of Wilchita, thence running due south along the western line of Wilchita and Archer counties to the northwestern corner of Throckmorton county; thence due west to the northwest corner of said county; thence due south to the southwestern corner of Throckmorton county; thence due west to the northwestern corner of Taylor county; thence along the north line of San Juan and Mitchell counties to the northwestern corner of the county of Wilchita, thence running due south along the western line of Wilchita and Archer counties to the northwestern corner of Throckmorton county; thence due west to the northwest corner of said county; thence due south to the southwestern corner of Throckmorton county; thence due west to the northwestern corner of Taylor county; thence along the north line of San Juan and Mitchell counties to the northwestern corner of the county of Wilchita, thence running due south along the western line of Wilchita and Archer counties to the northwestern corner of Throckmorton county; thence due west to the northwest corner of said county; thence due south to the southwestern corner of Throckmorton county; thence due west to the northwestern corner of Taylor county; thence along the north line of San Juan and Mitchell counties to the northwestern corner of the county of Wilchita, thence running due south along the western line of Wilchita and Archer counties to the northwestern corner of Throckmorton county; thence due west to the northwest corner of said county; thence due south to the southwestern corner of Throckmorton county; thence due west to the northwestern corner of Taylor county; thence along the north line of San Juan and Mitchell counties to the northwestern corner of the county of Wilchita, thence running due south along the western line of Wilchita and Archer counties to the northwestern corner of Throckmorton county; thence due west to the northwest corner of said county; thence due south to the southwestern corner of Throckmorton county; thence due west to the northwestern corner of Taylor county; thence along the north line of San Juan and Mitchell counties to the northwestern corner of the county of Wilchita, thence running due south along the western line of Wilchita and Archer counties to the northwestern corner of Throckmorton county; thence due west to the northwest corner of said county; thence due south to the southwestern corner of Throckmorton county; thence due west to the northwestern corner of Taylor county; thence along the north line of San Juan and Mitchell counties to the northwestern corner of the county of Wilchita, thence running due south along the western line of Wilchita and Archer counties to the northwestern corner of Throckmorton county; thence due west to the northwest corner of said county; thence due south to the southwestern corner of Throckmorton county; thence due west to the northwestern corner of Taylor county; thence along the north line of San Juan and Mitchell counties to the northwestern corner of the county of Wilchita, thence running due south along the western line of Wilchita and Archer counties to the northwestern corner of Throckmorton county; thence due west to the northwest corner of said county; thence due south to the southwestern corner of Throckmorton county; thence due west to the northwestern corner of Taylor county; thence along the north line of San Juan and Mitchell counties to the northwestern corner of the county of Wilchita, thence running due south along the western line of Wilchita and Archer counties to the northwestern corner of Throckmorton county; thence due west to the northwest corner of said county; thence due south to the southwestern corner of Throckmorton county; thence due west to the northwestern corner of Taylor county; thence along the north line of San Juan and Mitchell counties to the northwestern corner of the county of Wilchita, thence running due south along the western line of Wilchita and Archer counties to the northwestern corner of Throckmorton county; thence due west to the northwest corner of said county; thence due south to the southwestern corner of Throckmorton county; thence due west to the northwestern corner of Taylor county; thence along the north line of San Juan and Mitchell counties to the northwestern corner of the county of Wilchita, thence running due south along the western line of Wilchita and Archer counties to the northwestern corner of Throckmorton county; thence due west to the northwest corner of said county; thence due south to the southwestern corner of Throckmorton county; thence due west to the northwestern corner of Taylor county; thence along the north line of San Juan and Mitchell counties to the northwestern corner of the county of Wilchita, thence running due south along the western line of Wilchita and Archer counties to the northwestern corner of Throckmorton county; thence due west to the northwest corner of said county; thence due south to the southwestern corner of Throckmorton county; thence due west to the northwestern corner of Taylor county; thence along the north line of San Juan and Mitchell counties to the northwestern corner of the county of Wilchita, thence running due south along the western line of Wilchita and Archer counties to the northwestern corner of Throckmorton county; thence due west to the northwest corner of said county; thence due south to the southwestern corner of Throckmorton county; thence due west to the northwestern corner of Taylor county; thence along the north line of San Juan and Mitchell counties to the northwestern corner of the county of Wilchita, thence running due south along the western line of Wilchita and Archer counties to the northwestern corner of Throckmorton county; thence due west to the northwest corner of said county; thence due south to the southwestern corner of Throckmorton county; thence due west to the northwestern corner of Taylor county; thence along the north line of San Juan and Mitchell counties to the northwestern corner of the county of Wilchita, thence running due south along the western line of Wilchita and Archer counties to the northwestern corner of Throckmorton county; thence due west to the northwest corner of said county; thence due south to the southwestern corner of Throckmorton county; thence due west to the northwestern corner of Taylor county; thence along the north line of San Juan and Mitchell counties to the northwestern corner of the county of Wilchita, thence running due south along the western line of Wilchita and Archer counties to the northwestern corner of Throckmorton county; thence due west to the northwest corner of said county; thence due south to the southwestern corner of Throckmorton county; thence due west to the northwestern corner of Taylor county; thence along the north line of San Juan and Mitchell counties to the northwestern corner of the county of Wilchita, thence running due south along the western line of Wilchita and Archer counties to the northwestern corner of Th

C. MAY

SHOES FOR WINTER.

It is a great deal cheaper to buy a pair of Winter Shoes now than to buy cough medicine for the next five months. We have the right kind of Shoes, made of material suitable for cold weather, and at the same time neat and dressy.

Men's Shoes, Box Calf, Hand Welt Extension Sol. s. \$3.00 to 5.00
 Mens' Highland Calf, from..... 2.25 to 2.75
 Mens' Satin Calf, McKay sewed, from..... 1.35 to 2.00
 Ladies' Shoes, Hand Welt Extension Soles, from..... 1.50 to 3.50
 Ladies' Shoes, McKay sewed, from..... 1.50 to 2.25
 Child Shoes, Vici Kid or Calf, from..... .95 to 1.50
 Mens', Ladies' and Children's Arctics, from..... .85 to 1.50
 Mens', Ladies' and Children's Rubbers from..... .25 to .75
 Mens' and Ladies' Pelt Shoes and Slippers from..... .65 to 1.75
 Leggings and Lambs' Wool Soles of all sizes.



PRERURURE ON THE COUNTRY

in this instance doesn't mean diplomatic force against the United States, but pressure on country apples resulting in delicious, thirst-quenching, reviving sweet cider, which we have in quantities to suit the buyer. A pitcherful of this beverage will send the whole family off at night to dream pleasant dreams, and to stir up the sluggish organs of your body besides.

J. L. BELL & CO., Nos. 118 and 120, SOUTH SECOND STREET.

Yuco! Yuco! Yuco!

Friday and Saturday, November 2 and 3, 1900, the wonderful nutritious qualities of this Great Breakfast Food will be demonstrated by Miss Saunders, an experienced demonstrator from Denver, topped off with a cup of Chase & Sanborn's Celebrated Seal Brand Mocha and Java Coffee.

Everybody is invited to come to our store and try Yuco with a cup of the best coffee in the world.

Clouthier & McRae, 214 WEST RAILROAD AV.

THE DAILY CITIZEN

ALBUQUERQUE NOVEMBER 1, 1900

B. A. SLEYSER,
 Fire Insurance
 Accident Insurance
 Real Estate
 —Notary Public.

ROOMS 13 & 14 CHRONWILL BLOCK
 Automatic Telephone No. 174.

L. H. SHOEMAKER,
 305 West Gold Avenue next to First
 National Bank.
 Now and Second Hand Furniture,
 STOVES and HOUSEHOLD GOODS.
 Repairing a Specialty.

RANKIN & CO.,
 BRITISH AMERICAN
 Assurance Co.
 REAL ESTATE AND LOANS.
 ROOMS 20 and 22,
 N. T. ARMISTEAD BUILDING.
 Rappe for Bs.

The Jemez Hot Springs stage leaves from the First street stable every Monday at 5 o'clock a. m.

CITY NEWS.

White Knight 5 cent cigar.
 The Brunswick ten cent cigar at Fiesher & Rosenwald's.
 Lap robes from 40 cents each and up at Albert Faber's, Grant building.
 See the new Cape glove at the Icon outfit. The best walking glove made at only \$1.50.
 Take your next prescription to Matthews' "Pure Drug Pharmacy" by graduate pharmacists only.
 No tuberculosis Preservalline or coloring in Matthews' Jersey milk.
 See the children's sets, a muff, an collarette to a set, at the Economist.
 Now is the time to buy that hot water bottle at O'Reilly & Co's drug store.
 The celebrated Brunswick ten cent cigar—the prize winner—at Fiesher & Rosenwald's.
 Hahn's hand-drawn hot stuff is the "only" when it comes to making a good, steady heat.
 C. A. Grande, 265 North Broadway, fine liquor at 10 cents. Fresh time for sale. Furnished rooms for rent.
 Smyrna and Ammanite rugs; big shipment just received; new goods; good styles; standard quality. Albert Faber, Grant building.
 Don't miss the dress goods sale this week. Prettiest dress goods in Albuquerque. All new and fresh. This season's goods. B. H. Field & Co.
 Gentlemen! Now is the time to place your order. Our clothing prices and the price list. Nettleton Tailoring agency, 215 south Second street.
 M. K. Parramore, music teacher, is prepared to furnish music for all occasions. Dances a specialty. Call at or address, 214 west Silver avenue.
 Go to Spears, the jeweler, on the corner opposite the postoffice, for fine watch repairing and great cut on Elgin watches. Also a fine latest improved \$35 Singer sewing machine. Call and see them. For furnished rooms with bath and good location call at 217 West Silver avenue.
 A large shipment of men's, ladies' and children's leggings in leather, canvas, corduroy, Jersey and heavier just received. Also a full assortment of arctic, rubbers, felt shoes and slippers.

Rosenwald Bros.

Our November Sale of Ladies' Skirts and Waists

Has to be larger than that of any preceding month, so as to make this a certainty, we will create a

GRAND SPECIAL SALE

On Ladies' Woolen and Silk Skirts and Silk and Flannel Shirt Waists. Note the following prices which gives you an example of our price reduction:
 A Merino Skirt in colors, regular price \$1.15, now..... 85c
 A Black Figured Brilliantine, regular \$2.25 kind, now..... \$1.85
 An All Wool Skirt in Black and Colors, easy worth \$4.00, now..... 3.05
 A Ladies Cloth, in Black Only, man tailored, stitched and beautifully finished. Worth \$9.50; for this sale only, goes at..... 6.95
 Beautiful Silk and Wool Crepon Skirts, worth up to \$12.50, go during this sale at the unheard of price of..... 6.10
 This is one of the special features of this sale, and we invite comparison in both price and quality.
 In Silk Skirts we offer big inducements. Give us a trial. Space will not permit us to go into detail in regard to Waists, but we guarantee the best value in the city for the money.
 In the above mentioned articles we defy competition. We do exactly as we advertise and invite your investigation.

Rosenwald Bros.

LOCAL PARAGRAPHS.

J. P. McNally, assistant division superintendent of the Santa Fe, whose headquarters are at San Marcel, is in the city to-day.

The regular meeting of the W. C. T. U. will be held at the Congregational church to-morrow afternoon at 3 p. m. Miss Townsend, secretary.

The republicans of old town will hold a rousing rally meeting at the court house to-night. The voters of this precinct will be out in full force.

A car load of California thoroughbred running and trotting horses for the eastern circuit passed through the city north-bound this morning.

Mrs. W. H. Lithgow, mother of H. R. Lithgow, foreman of the Citizen laundry, is expected to arrive from Denver to-night and will make her son an extended visit.

Abraham Kempenich, the big general merchant of Perale, is here on a visit to his brother, L. Kempenich, and son, Eugene, the clerk at Simon Stern's clothing house.

P. J. Towner, the Colorado cattle inspector, stationed in New Mexico at Las Vegas, is in the city to-day, consulting with local cattle buyers, shipper and raisers.

Henry Loeb, wife and family returned home last night after a month's visit among relatives at St. Louis. The trip was very enjoyable, but they are glad to get back again.

Harry Potter, who came here to enjoy a day in the territorial metropolis and was noticed around among the bloods yesterday and last night, returned to the territorial capital this morning.

Ed. Chavez, corner of New York and Third street, is around to-day notifying his friends that the body of his household presented him with a bouncing baby boy yesterday, weighing ten pounds.

The colored republican club will hold a big rally at their hall on Gold avenue to-morrow (Friday) evening. Everybody invited and expected to come and hear some good republican speeches.

W. E. Nordbeck, general manager of the Germania Life Insurance company, headquarters at Denver, will arrive from the north to-night, and will remain a few days with the local managers, Messrs. Becker & Lewis.

Edward Hale, driver for the fire department, has handed his resignation to Chief Kuppe, who accepted it, and has appointed Tony Ortiz to fill the vacancy, subject to the approval of the mayor and city council.

P. Hanley, who spent last winter here, has returned after spending the summer at Washington, Baltimore and other eastern points. He looks and feels well and has some good political pointers to present for argument.

There will be a regular meeting of Triple Link Rebekah lodge, No. 16, I. O. O. F., to-night at Odd Fellows' hall. A full attendance of officers and members is desired. After lodge a business meeting of the Mite society will be held.

E. E. Abell has returned from Las Vegas, where he went to take a series of baths at the Hot Springs. He feels greatly rejuvenated and his walk is as sprightly as a ten year old, so that the rheumatism was most certainly left behind.

On the coming Saturday night a great republican rally will take place in this city, at which time one of the best republican orators in the territory will be present and address the people. Everybody invited and expected to attend.

J. W. Miller, the well-known and popular general merchant and Indian trader at the village of Jemez, came in over the west mesas late yesterday afternoon. He reports his section of Terrell county in fine condition, and states that the Indians of the Jemez village are in a prosperous condition.

Jose D. Sena, secretary of the territorial republican central committee, received daily good reports are being received daily from doubtful counties, and that the doubt about the election of Judge Rodey has been entirely removed. It is Mr. Sena's opinion that Rodey will be elected by at least a 300 majority.

Hon. Manuel R. Otero, the popular register of the United States land office at Santa Fe, is here to-day, mingling with the local republican politicians. He will remain here for a day or two, and then proceed to his home in Valencia county, where he will put in some solid work for Judge Rodey, the republican candidate for delegate to congress.

Half a dozen houses, so reported, have been entered by "mysterious persons," the past ten days and some valuable articles purloined. These thefts have been kept out of the papers in the hope that the "guilty one" would be apprehended. Up to date, however, the sick house breakers have eluded the officers, but Marshal McMillin and his south bounds expect to bag a few of them in the next few days. They have their eyes on several suspicious characters and will run them in on the least provocation.

UNEQUALED!!

THE BRUNSWICK Cigar has never felt the weight of competition. Its quality has placed it out of reach. In wrapper and in filler it is matchless. The Brunswick is not made for one class of smokers; it is made to please everybody. Many a high priced article has been dropped—has given place to this to cent creation. On the other hand, smokers who have always insisted on economy have taken to the Brunswick because it gives most for the money. A cigar which has thus surmounted all obstacles and made for itself a secure place in the regard of the smokers of America cannot but please you also. We only ask you to give it a chance.

Half a dozen houses, so reported, have been entered by "mysterious persons," the past ten days and some valuable articles purloined. These thefts have been kept out of the papers in the hope that the "guilty one" would be apprehended. Up to date, however, the sick house breakers have eluded the officers, but Marshal McMillin and his south bounds expect to bag a few of them in the next few days. They have their eyes on several suspicious characters and will run them in on the least provocation.

A Reminder

The cold weather, which is coming now, reminds you of the need of Warmer Clothing, and this ad. is to remind you that.....

WE CAN MAKE YOU COMFORTABLE.

We have nice, soft Underwear of all grades and colors. We have a line of Suits, Overcoats and Trousers which are the best for the money ever shown in this section, and

It Won't Hurt Your Pocketbook

very much to become possessed of some of our nice goods, as "Popular Prices" is our long suit.....

SIMON STERN,

RAILROAD AVE. CLOTHIER.

Albert Faber,

305 Railroad Avenue, Grant Building. New Phone 523.
 MAIL ORDERS SOLICITED.

Headquarters for Carpets, Matting, Linoleum and Curtains, House Furnishing Goods.

We are showing for the FALL SEASON a large assortment of

Floor Coverings

Comprising all the Latest Weaves and Colorings in Savonneries, Royal Wilton, Wilton Velvets, Axminsters, Mcquette, Body Brussels, Tapestry Brussels, Ingrain Carpets, Japanese and China Matting, Linoleum and Oil Cloth, Table Covers, Couch Covers, Curtains, Drapery Goods, Etc.

S. VANN & SON,

Throw away your rusty steel frames and have your lenses put in our 10-year Guaranteed Gold filled Frames WHILE YOU WAIT.
 107 SOUTH SECOND STREET.

The World Listens When Leaders Speak.

This is true of the Furniture business as of statecraft. Naturally we have considerable pride in being leaders in our business. Quite a strong expression, but quite easily proven. The Furniture, the price to be the evidence, you to be both judge and jury. Come in and be convinced.

Wardrobe Bed Couches AND LOUNGES, \$7.80 TO \$27.80.

CENTER TABLES—All Styles. 75c to \$9.25. GOLDEN OAK POLISH.

J. O. Gideon.

J. A. SKINNER, Dealer in Staple and Fancy Groceries, 206 West Railroad Avenue, ALBUQUERQUE, N. M.

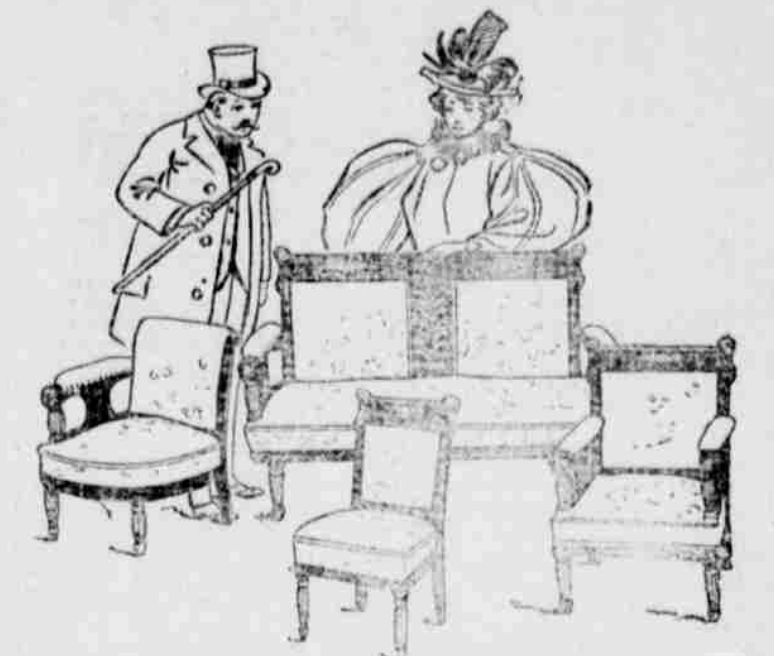
Largest Stock of NAVAJO RUGS AND BLANKETS In the City. \$1.00 up. O. A. MATSON & CO., 205 West Railroad Avenue.

A. J. MALOY,

DEALER IN Staple and Fancy Groceries. AGENT FOR CLUB BELL'S HOUSE CANNED GOODS! SPRINGS CREAMERY BUTTER. NONK TO EQUAL. THE FAMOUS. 118 Railroad Ave., Albuquerque, N. M.

E. J. POST & CO., Hardware

American Jewel Base burners, Gole's Hot Blast Heaters, Air-Tight Wood Heaters, Steel Ranges & Cook Stoves. Repairs Furnished for All Makes of Stoves. Stoves Cleaned, Blackened and Set Up.



BARGAINS IN FURNITURE

We have what you want at the prices you want. To make room for Holiday Goods, now arriving, we will sell you anything you want at ACTUAL COST.

LAMPS--BELOW COST.

O. W. Strong & Sons.

Furniture, Crockery and Glassware. Corner of Copper Avenue and Second Street.

T. Y. MAYNARD,

Watches, Clocks, Diamonds, Fine Jewelry, 119 S. Second Street, Albuquerque

Bargain Day Every Day and Everything a Bargain.

Wright's Health Underwear, \$1. \$2.50 and \$3 a suit.
 Monarch Shirts, \$1 and \$1.25.
 Young's Agency Hats, \$2.50, \$3 and \$3.50.
 Keystone Celebrated Men's Pants, \$1.50, \$2, \$3 and \$3.50.

E. L. WASHBURN, 122 Second St