

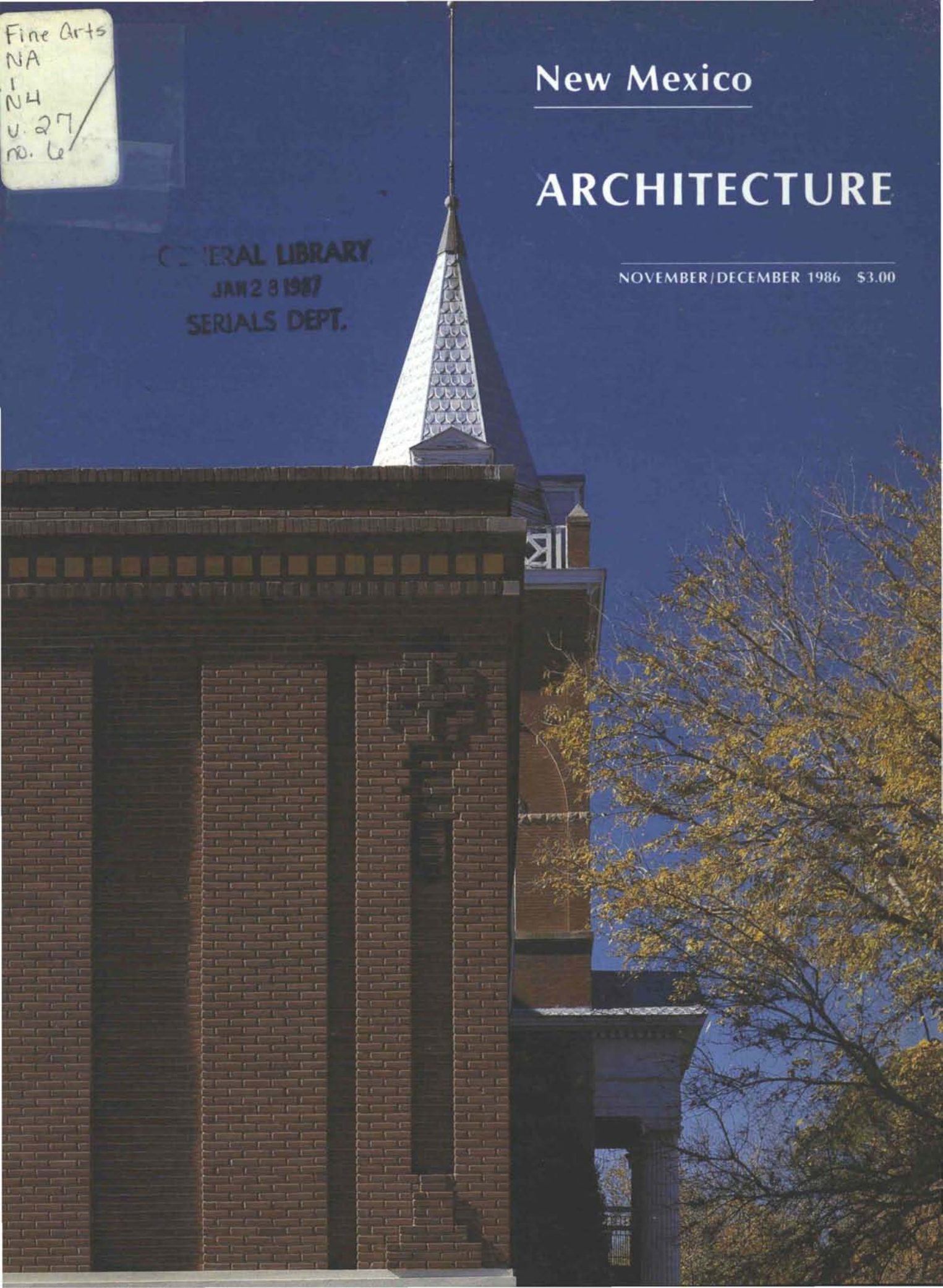
Fine Arts  
NA  
1  
N4  
U. 27  
no. 6

New Mexico

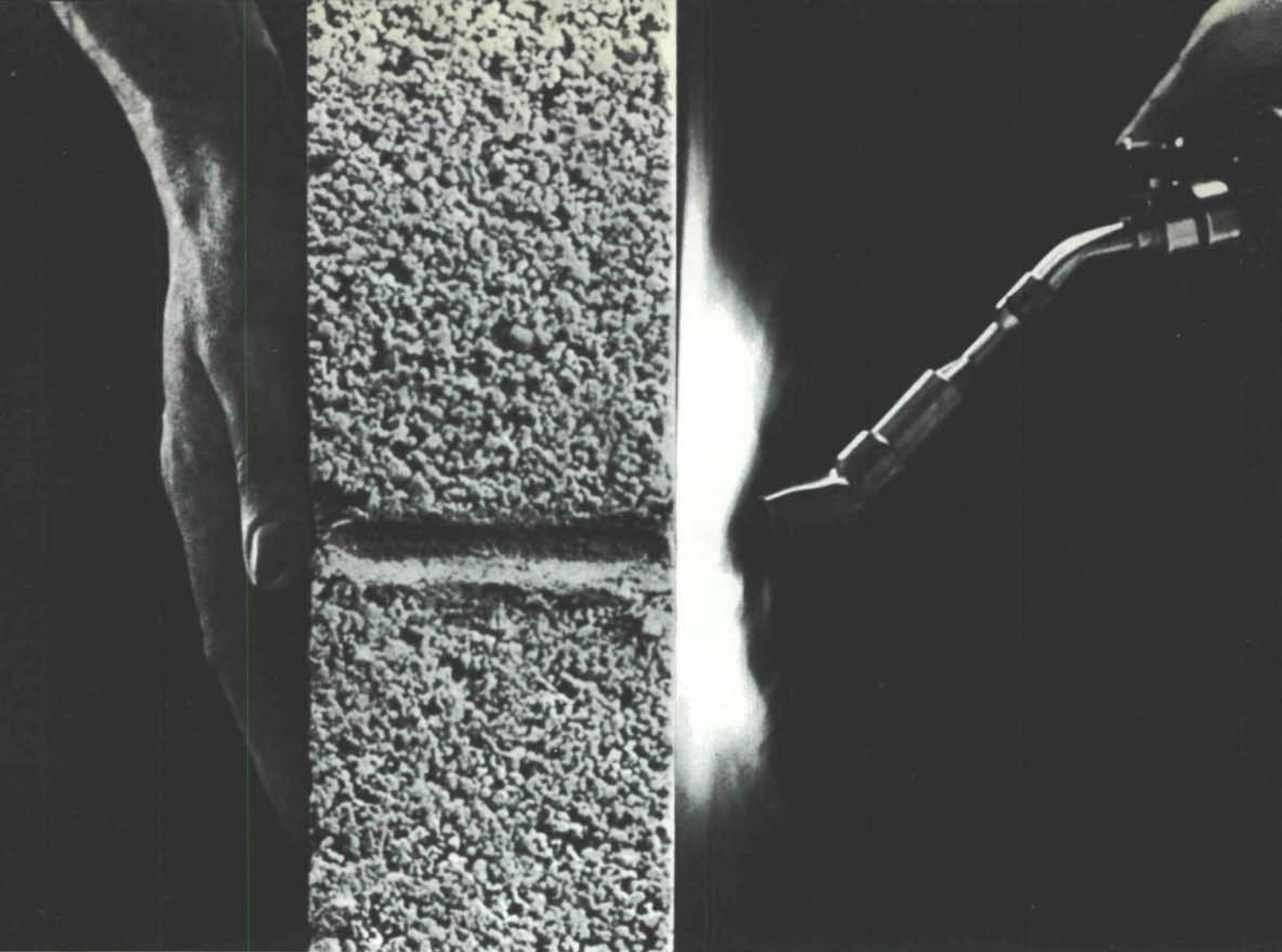
# ARCHITECTURE

NOVEMBER/DECEMBER 1986 \$3.00

CENTRAL LIBRARY  
JAN 28 1987  
SERIALS DEPT.







## A FAST, ECONOMICAL WAY TO A TWO-HOUR FIRE RATING.

Fire barriers between multiple dwelling units needn't be assembled with cook-book type instructions, paper-mache elements and lots of luck. By using concrete masonry walls, you can get a two-hour fire rating in a wall as slim as 3½" — weighing as little as 28 pounds per square foot — with the added plus of high STC ratings for occupant acoustical privacy.

And the masonry installation is simple, just one concrete block laid in mortar in a running bond on top of another concrete block. The work is all done by the same craftsman for the height of the wall and it is

easily inspected for potential deficiencies. This same ease of inspection is not available with the multi-phase, layered, paper-mache type of fire wall. (An 8 foot high fire wall built of standard 8" ASTM C-90 concrete block with type-N mortar can carry a concentric load of 5,800 pounds per lineal foot. Most fire-rated drywall walls are non-loadbearing.)

Come to think about it... have you ever seen a masonry wall burn? That is something to think about, the next time you build a stairwell or elevator shaft.



**CREGO BLOCK CO.**

P.O. BOX 6466  
ALBUQUERQUE, N.M. 87197

6026 SECOND STREET, N.W.  
(505) 345-4451



Courtesy of  
Masonry Advisory Council



• vol. 27 no. 6 •

nov. - dec. 1986 • new mexico architecture

In this issue,

an article on historic preservation and adaptive reuse, the Luna County Courthouse has a new entrance and additional office space. The article was prepared by William Quinn Sabatini, AIA, who is a partner in the firm of Holms, Sabatini, Smith & Eads, Architects, Albuquerque. Mr. Sabatini became involved with the Luna County Courthouse as an architectural intern in the employ of Jess Holmes, AIA. "He permitted me to take the lead in the design of the Luna County Project. The project became my Masters Thesis for the fulfillment of the requirements at the University of New Mexico for a Master of Architecture degree in 1978."

The firm received an Award of Honor from the New Mexico Cultural Properties Review Committee. The Award reads: "for the sensitive, contemporary, remodeling designs for the Luna County Courthouse to meet future and present needs."

□ □ □ □

The cover of this issue of *nma* is sponsored by Holms, Sabatini, Smith & Eads, Architects. We are pleased to thank them for their generosity. The photographer is Robt. Ames Cook, who is new to our magazine. His photographs have also been featured on the cover of our neighbor and "cousin", *Texas Architect* magazine.

JPC

□ □ □ □

We were saddened by the news that "Barbee" Kitts, wife of Robert D. Kitts, died at the much young age of 44. Bob Kitts has been a firm supporter of *New Mexico Architecture* as one of our advertisers, for which we are indebted to him. Barbara Kitts was co-founder of the family business, Kitts Enterprises Inc., and was the former arts coordinator for the Albuquerque Cultural Affairs Program. The family has asked that memorials be sent to the Friends of the KiMo Theatre or to the American Cancer Society. We express our sympathy to Bob and the family. John Conron and Carleen Lazzell.

# nma

👉 The Editor's Column	3
NMA News	9
"BPLW, Architects and Engineers, Inc." is Formed	
Westwork Architects, P.A., Featured in <i>Architectural Record</i>	
1987 Architectural Photography Competition Entry Forms Available	
Baczek Joins Solar Institute	
Luna County Courthouse-Deming, N.M.	10
by William Q. Sabatini, AIA	
Pigeon's Ranch	17
by Ruth W. Armstrong	
Professional Directory	20
Advertiser's Index	22

(Cover — Luna County Courthouse — ©Robt. Ames Cook, Photographer)

—Official Publication of the New Mexico Society of Architects, A.I.A.—

## Society Officers

President—Don P. Schlegel, FAIA  
 President-Elect—Randall L. Kilmer  
 Secretary/Treasurer—John Eden  
 Director—Peter Allen  
 Director—Beryl Durham  
 Director—Wayne Lloyd  
 Director—Roger B. Lujan  
 Director—Steve Newby  
 Director—Richard C. Scott  
 Director—William Friemuth

## New Mexico Architecture - Committee

John P. Conron, FAIA, —Editor  
 Carleen Lazzell — Associate Editor/Advertising Director  
 Van Dorn Hooker, FAIA — Chairman  
 George Anselevicius, FAIA  
 Marjorie Hooker, AIA  
 Christopher Larsen, AIA  
 Charles E. Nolan, Jr., AIA  
 George C. Pearl, FAIA  
 Glade F. Sperry, Jr., AIA  
 V.B. Price — Former Editor "New Mexico Magazine"  
 Don P. Schlegel, FAIA  
 Nancy Weinman, AIA  
 Christopher Wilson, Architectural Historian



for the finest...



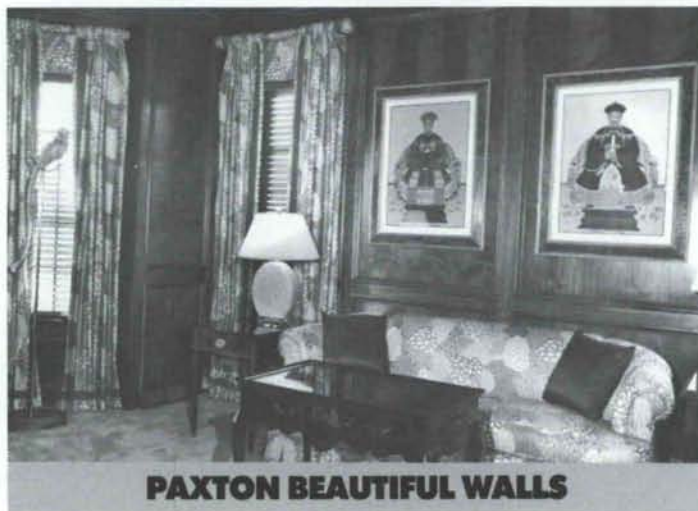
...travertine and marble quarried and fabricated in New Mexico for

- flooring
- interior and exterior cladding
- feature panels
- furniture and accessories

## NEW MEXICO TRAVERTINE



4741 Pan American Freeway NE  
Albuquerque, NM 87109 Telephone 505 345 1327



**PAXTON BEAUTIFUL WALLS**

### PAXTON BEAUTIFUL WOODS

include the very finest stock and custom milled wood wall paneling: Tongue and groove, raised panels, hardwood, plywood, softwood, beaded ceiling, tambour and mouldings.

When you buy from Frank Paxton Lumber Company you invest in quality.

Paxton is the nation's largest distributor of high grade lumber available: fine hardwoods and cabinet softwoods of

various thicknesses, all graded and measured after careful kiln drying.

We also stock a complete line of plywood, veneers, abrasives, finishing materials, dowels, drawer sides, hardware, and more and specialize in custom paneling and millwork.

Frank Paxton Lumber Company. We've been setting standards of excellence in our industry since 1914, by pleasing professionals like you.

### FRANK PAXTON LUMBER COMPANY

1909 Bellamah N.W.  
Albuquerque, NM 87104  
(505) 243-7891  
1-800-432-9142 New Mexico  
1-800-545-8386 Out of State

**PAXTON  
BEAUTIFUL WOODS**





## Introducing the DraftPro Plotter

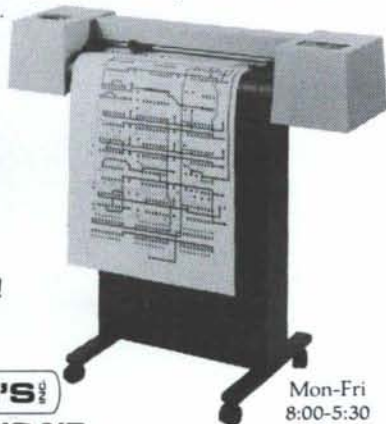
Quality Graphics for Your Personal CAD System

Hewlett-Packard offers the solution you (and your personal CAD system) have been waiting for ... the new HP DraftPro.

- Plots on A2/C- and A1/D-size single sheets (and the architectural equivalents) of paper, vellum, and polyester film.
- Holds an 8-pen carousel for fiber-tip, refillable liquid-ink, and disposable liquid-ink pens.
- Compatible with IBM, Apple, and Hewlett-Packard computers.
- Supported by the leading software packages.
- Provides traditional HP quality, reliability, and service at an untraditional low price.



Ask for a  
demonstration today!  
**505 • 265-7981**



**HOLMAN'S**  
401 WYOMING NE  
ALBUQUERQUE, N.M. 87123

Mon-Fri  
8:00-5:30  
Sat  
10:00-3:00

## Albuquerque Door Company

New Mexico's Largest Pre-Hung Door Supplier

CELEBRATING

OUR 20th YEAR OF SERVICE

- \* Interior and Exterior Flush Doors
- \* Exterior Metal Entry Doors
- \* Interior Panel Doors
- \* Classic Stile and Rail Entry Doors
- \* Windows
- \* Fireplaces
- \* Skylights
- \* Garage Doors
- \* Hollow Metal Doors & Hardware
- \* Closet Maid Ventilated Shelving
- \* Cabinets

FEATURING: Oak Exterior and Interior Flush  
and Panel Doors with Oak Jambs and Trim.

3600 Pan American Freeway NE

(505) 884-1601

## BUILD INTERIOR &



## EXTERIOR WALLS

with initial savings that grow with age!

**Spectra-Glaze II**® The only glazed block with more than 3 decades of proven performance. Permanent, sanitary glazed finish. Practically no maintenance. Energy & insurance savings too. Meets Gov't specs. Wide range of color, texture, form, scale & pattern. © 4.4 Bu in SWEET'S.

PRE-FACED  
CONCRETE  
MASONRY UNITS

**NO REFURBISHING!**  
ASK FOR COST COMPARISONS  
AND CASE HISTORIES . . .

FEATHERLITE BUILDING PRODUCTS CORP.,

Box 489, Lubbock, TX 79408

FEATHERLITE BUILDING PRODUCTS, Box 9977, El Paso, TX 79990

CREGO BLOCK CO., INC., 6026 2nd St. NW, Albuquerque, NM 87107

BUILDERS BLOCK, Box 1633, Roswell, NM 88201

BUILDERS BLOCK, Drawer FF, Las Cruces, NM 88001

806 / 763-8202

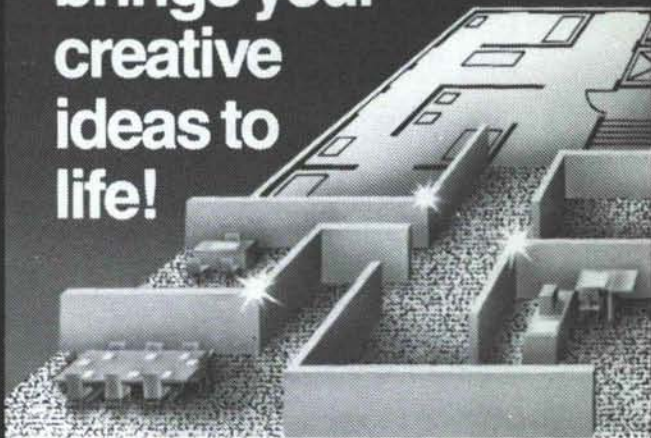
915 / 859-9171

505 / 345-4451

505 / 622-1321

505 / 525-3633

**Bigelow...**  
brings your  
creative  
ideas to  
life!



You've agonized over the concept, sweated out the plans, now it's time for the compliments. And when you specify Bigelow underfoot, you know the rug won't be pulled out from under you. We can supply and install the Bigelow carpet to complement your plans!

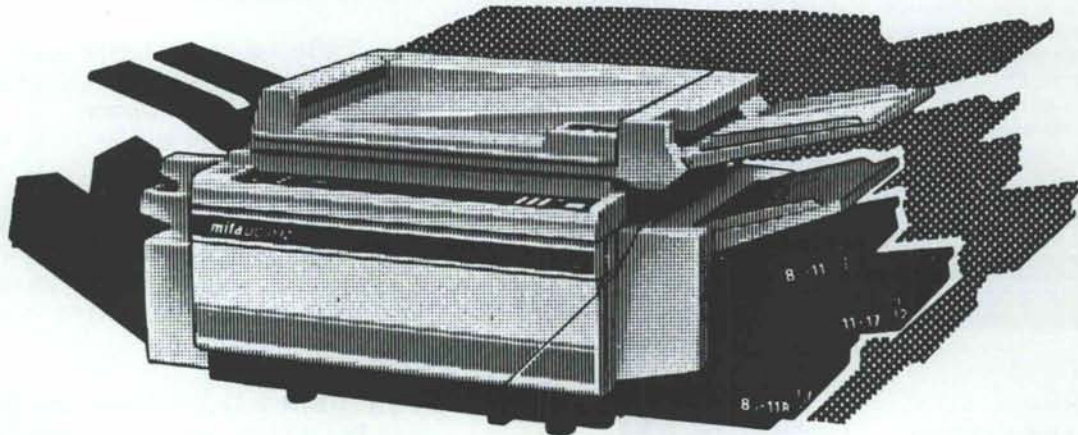


american  
business  
interiors

612 Central Avenue, SW  
Albuquerque, New Mexico 87102  
(505) 883-2055



# INTRODUCING THE *mita* DC-313Z



with **ZOOM**

**REDUCTION and ENLARGEMENT**

... because all originals don't come in perfect sizes!

Don't be limited to preset copy sizes! With the DC-313Z plain paper copier, 766 different steps of magnification are possible!

And, the DC-313Z offers:

- Copies as big as 11 x 17
- Convenient 4 way paper feeding system
- Automatic magnification selection
- 30 copies per minute
- Snap in toner cartridge for easy loading
- Easy to read display
- 7-step density selection
- Letter perfect dry copies
- Optional automatic document feeder and sorter



The Perfect Copier for Architects and Engineers  
Call for a Demonstration

**INNOVATIVE CONCEPTS, INC.**

6329 Lomas, NE

Albuquerque, New Mexico 87110

(505) 255-1692

# BRICK GIVES YOU A NICE WARM FEELING INSIDE.



Nothing conserves energy like brick.

It stays warmer in the winter and cooler in the summer to help keep your energy bills low.

A brick house's solid reputation for quality makes it the right place to raise a family. And brings a

higher resale value too.

So whether you're buying, building, or remodeling, you can feel good about brick.

For more information about the benefits of brick, contact your local brick manufacturer or dealer today.



**BUILD A BETTER LIFE WITH BRICK.**

**MASON CONTRACTORS ASSOCIATION OF NEW MEXICO**

*November-December 1986 / 7*



## JIM BISHOP, BUILDER



Cathie and Bill Isaacs say: "Jim Bishop is a talented, honest, reliable contractor, who spent our house budget so carefully that it was possible to do much more than the original contract included. No one in the crew worked harder than the boss. You won't find a better outfit than Jim Bishop and his crew."

New Construction,  
Tenant improvements,  
"Sunspace" Additions,  
Historic restoration  
For clients of vision  
and taste.

### BUILDINGS THAT RISE TO YOUR CHALLENGE... AND EXCEED YOUR EXPECTATIONS

Jim Bishop, General Contractor, Inc.

1224 Second Street, NW • Albuquerque, NM 87102 • (505) 242-4677

If you need CADD help,  
**GET IT  
RIGHT!**



**Get the right system -** AutoCAD,\* and it can pay for itself in just months. AutoCAD is the world's best-selling computer-aided drafting and design software, with the right packages to suit your specific needs.

**Get it at the right place -** DATA HANDLING COMPANY, your full-service computer graphics experts, specializing only in technical graphics systems. Our experienced staff (DATA HANDLING COMPANY has been in business here since 1965) is highly-qualified to install, train, and maintain your system after it's in place.

*For a FREE DEMONSTRATION of what AutoCAD can do for you,  
call Ray Rachkowski,*



**DATA HANDLING CO., INC.**

3105 San Pedro NE • Albuquerque, New Mexico 87110 • (505) 884-0284

\* AutoCAD is a trademark of Autodesk, Inc.

