

A New Hotel for Santa Fe **A Project by McHugh, Lloyd and Associates, Architects**

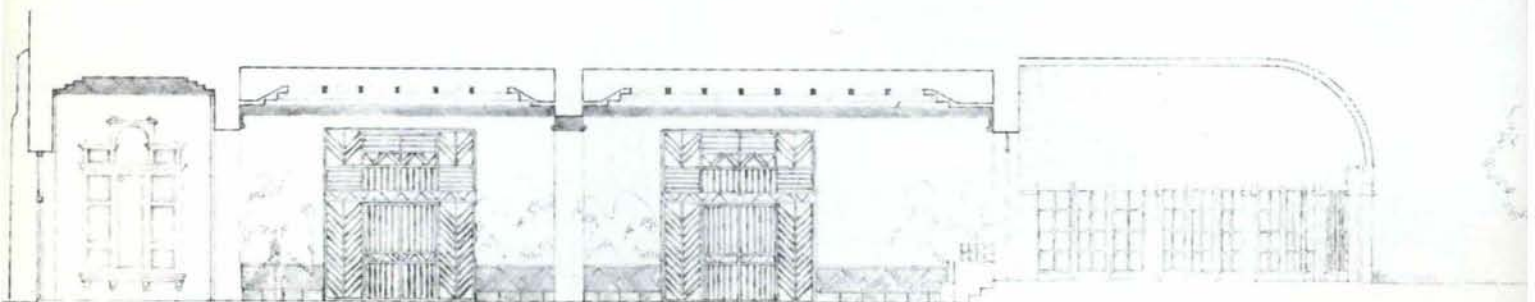
The new proposed Eldorado (one word) hotel received its name from a legendary treasure. Inspired by a ruler-priest in the Columbian Andes who, as the legend goes, conducted a ceremony where he covered his naked body with gold dust and in turn removed the gold dust by jumping into a lake while his subjects tossed gold and silver coins after him. El Dorado (Spanish: the gilded one) came to refer to a legendary city and eventually to an entire country where riches were to be had in overwhelming abundance.

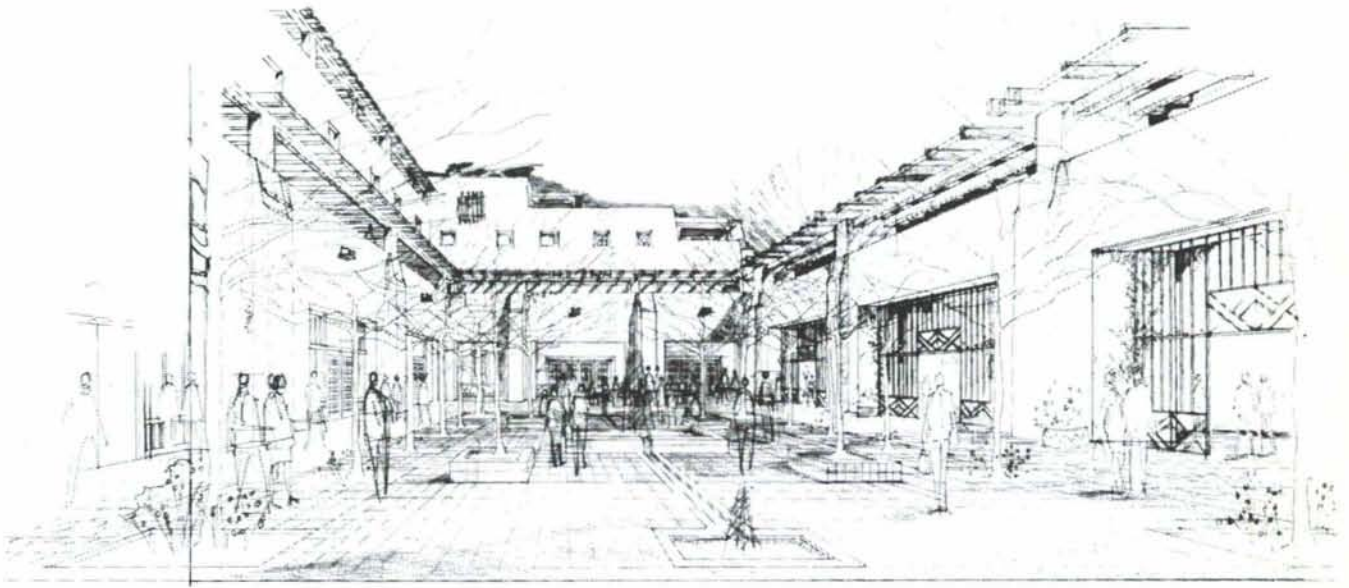
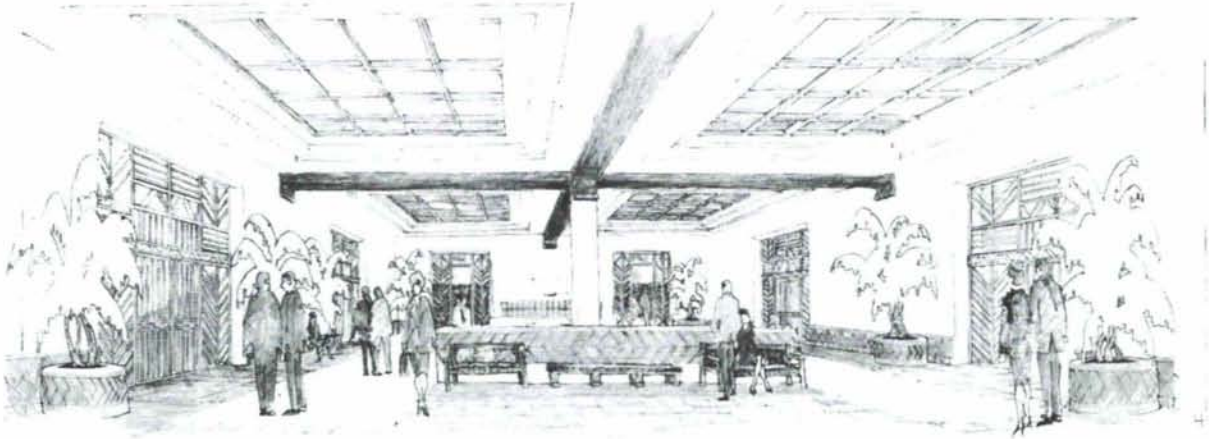
The new hotel will be located on a 78,142 sq. ft. site presently occupied by the Big Joe Lumber Co. A small hotel occupied the same site in 1860, it was also named the Eldorado. Upon purchase of the Big Joe site by the Zeckendorf Co. the present owners will retire. The new luxury hotel will have as a central focus a tree-canopied courtyard. The major entrance to the hotel will be from the end of the Palace Ave. through a peristyle into the central courtyard. Surrounding the courtyard will be a lounge, formal dining, retail shops and terrace dining reminiscent of European sidewalk cafes, the interiors will be designed in the tradition of grand old hotels. The architecture of the hotel will be a layered stepped back design with two four story towers flanking the main peristyle entrance. The upper levels as well being stepped back will have open portal protected terraces. Large two story pilasters embrace the lower floors providing lateral support. Extensive garden design and fountains in a truly Spanish tradition will play an integral part in providing delight in all the public spaces.

The Spanish pueblo-revival design is generated by the use of all the old traditional building elements: engaged pilasters, heavy beams small set back terraces, portals, small openings, gardents, fine grill work and decorator tile, all parts of large commercial and religious buildings in the early southwest.

A 200 year old historic adobe house is presently located on the site and will be preserved and incorporated into the new structure.

The Eldorado Hotel will offer a cosmopolitan, sophisticated center serving as a focal point for the west end of San Francisco St. and Palace Avenue and acting as a catalyst to restore pedestrian environment to the San Francisco St. neighborhood.





ATTENTION NMSA MEMBERS:

Projects - Do you have renderings, sketches, or a model of projects purposed for construction or under construction?

New Mexico Architecture magazine would like to devote space in each issue of their publication. Send a black & white photograph with a caption explaining the project to:

John P. Conron • P.O Box 935 • Santa Fe, NM 87504