

12-20-1921

Albuquerque Morning Journal, 12-20-1921

Journal Publishing Company

Follow this and additional works at: https://digitalrepository.unm.edu/abq_mj_news

Recommended Citation

Journal Publishing Company. "Albuquerque Morning Journal, 12-20-1921." (1921). https://digitalrepository.unm.edu/abq_mj_news/421

This Newspaper is brought to you for free and open access by the New Mexico Historical Newspapers at UNM Digital Repository. It has been accepted for inclusion in Albuquerque Morning Journal 1908-1921 by an authorized administrator of UNM Digital Repository. For more information, please contact disc@unm.edu.

LAST COUNT OF CREDITS BY SALESMANSHIP DEPT. YESTERDAY; RACE BLIND

Standings as Published Today Last Count To Be Made By Salesmanship Club Department--Campaign Judges Will Take This Count as the Basis on Which Final Count Will Be Made--Balloting in Big Race Now Blind In All That the Term Implies--All on Even Basis and Every Indication Points to a Neck and Neck Finish for the Big Motor Cars and Other Gifts; Big Campaign Ends Thursday Night, December 22nd, at 10 O'clock.

CLUB MEMBERS ON 'HOME STRETCH'

The published standings of Journal Salesmanship Club members as published this morning represents the last count to be made by the campaign department and as the standings appear today so will they appear Wednesday and Thursday mornings. The race is BLIND from now until the close--blind in all that the term implies.

On "Home Stretch."

With only TWO days after today in which the hustling CLUB members in The Morning Journal's Salesmanship Club campaign may entrench themselves behind enough credits to win, such a gigantic, tireless through canvass for subscriptions as these energetic folks are making these last final, fateful hours, has never been seen in this state.

It is truly a wonderful race between the most popular and the most capable representatives of the people of this community that ever been inaugurated in this section of the old U. S. A.

All of this district--in fact all of the entire state, is watching and waiting--and wondering and hustling for their favorite club members.

And when the great value of the prizes at stake are taken into consideration is there any wonder? HONOR, GLORY and a SMALL FORTUNE AWAIT THE WINNERS NEXT SATURDAY NIGHT.

LAST PUBLISHED COUNT TODAY.

An analysis of the credit standing of the CLUB members, as published for the last time today, before the final count by the Judges, shows an interesting situation as the head-liners round the last turn and go into the "home-stretch" under "whip and spur."

The best entries of Albuquerque and the entire state of New Mexico are on the score card--the first prize is equal to \$2,300.00. The Club members are rounding the turn for the last time--thousands of enthusiastic friends are cheering and "pulling" for their favorites--and the wire is almost in reach. MAY THE BEST CLUB MEMBERS WIN.

STANDINGS

Of Candidates in The Journal Salesmanship Club Campaign, up to noon Monday, Dec. 19.

DISTRICT NUMBER ONE

Mrs. H. J. Tompkins.....	2,796,800
Mrs. R. E. Hathcox.....	2,787,800
Mrs. Margaret F. Barnes.....	2,776,100
Miss Lillian Yisarrri.....	2,723,000
Miss Edna L. Williams.....	2,685,025
Miss Helen Gurule.....	2,664,500
Chas. Hill Barber, Jr.....	2,576,650
Mrs. R. M. Marx.....	2,526,600
Miss Ada Philbrick.....	2,305,300
James Ross, Jr.....	1,821,600
Miss Margaret Kleinworth.....	1,538,600
Mrs. G. D. Ramsey.....	1,408,400
Miss Dorothy Bowman.....	1,118,900
Mrs. Margaret Schaltegger.....	886,300
G. Albert Linder.....	172,800

DISTRICT NUMBER TWO

Mrs. C. Martinez, Gallup, N. M.....	2,560,100
F. C. Groman, East Las Vegas, N. M.....	2,113,300
Miss Virgie Hidalgo, Gallup, N. M.....	2,049,900
Rene Divilbess, Holbrook, Ariz.....	1,793,200
Mrs. Florence Saul, Dawson, N. M.....	1,724,600
Miss Sophie Martin, Gallup, N. M.....	1,434,600
Mrs. Lawrence Abreu, Springer, N. M.....	1,081,300
L. J. Sandoval, Santa Fe, N. M.....	1,025,000
Mrs. Fern Swatzell, Gallup, N. M.....	614,000
J. F. Jamison, Raton, N. M.....	556,200
Mrs. J. F. Oglesby, Santa Fe, N. M.....	329,000
Arthur H. Gallup, Chamita, N. M.....	301,500
Neil P. Bolt, Wagon Mound, N. M.....	169,100

DISTRICT NUMBER THREE

T. H. Bowland, Belen, N. M.....	2,647,800
O. E. Loran, Clovis, N. M.....	2,459,100
F. C. Burgess, Socorro, N. M.....	2,425,000
Miss Lupita Garcia, St. Johns, Ariz.....	2,182,800
Gordon Herkenhoff, Socorro, N. M.....	1,846,400
Miss Margaret Radcliffe, Belen, N. M.....	1,565,600
L. J. Stone, Clovis, N. M.....	1,495,600
Baby Ellen, State Orphans Home, Portales.....	314,300
Miss Fannie Frost, Snowflake, Ariz.....	289,400
Mrs. Florence Kronig, Belen, N. M.....	195,400

HOW TO WIN CREDITS

A glance at the Credit Schedule will show the big credit values of six-year subscriptions. For example, one six-year subscription counts 180,000 credits while a one-year subscription counts 6,000 credits. In other words, one six-year subscription is many times more valuable than a one-year subscription.

Figure this out for yourself--it is easy to see that the Club members who are the most successful this week will be the ones who get the greatest number of long-term subscriptions. In fact, a few six-year subscriptions turned in from unexpected sources would make a new leader in the race. Keep in mind, too--that every \$27.00 CLUB of subscriptions turned in entitles you to 100,000 EXTRA FREE CREDITS, besides the regular number of credits allowed on the subscriptions.

So, remember to keep after the six-year subscriptions which are biggest in credit value. That's the way to win the prize of your choice.

PRESENT SUGAR DUTY OPPOSED ALSO DEFENDED

Arguments for and Against Retention of the Temporary Rate Are Heard By Senate Tariff Framers.

(By The Associated Press.) Washington, Dec. 19--Extended arguments for and against retention of the present temporary duty of 1.6 cents a pound on Cuban raw sugar were presented today to senate tariff framers. Spokesmen for American sugar companies operating in Cuba declared that the rate would prevent rehabilitation of the industry there, while representatives of the sugar industry in this country asserted a return to the Underwood rate of one cent a pound would prevent development of that industry, if it did not destroy it. Those representing the American companies in Cuba declared that more than a tariff question was involved; that the rehabilitation of Cuba depended on the sugar industry and that the United States was generally bound to aid that country. They also argued that there were 1,000,000,000 of American capital invested in the Cuban industry as against \$200,000,000 in the industry in this country.

Tax on American People. It was also argued that the duty proposed to be made "permanent" by the Fordney bill was the highest imposed in thirty years and that it represented a tax of \$162,000,000 annually on the American people, \$11,000,000 of which would go to American sugar producers. Attention was also called by witnesses that Cuba imported last year \$515,000,000 worth of American products and that since the economic life of the island depended on its sugar crop, much of this trade would be lost unless the United States helped rehabilitate the Cuban sugar industry.

Finally it was argued that the clause in the Fordney bill permitting American refineries to import at three-fourths of the normal duty two pounds of sugar for each pound of domestic sugar refined from beets or cane was a violation of the spirit, if not the letter of the reciprocity treaty with Cuba giving a preferential rate of 20 percent below the full rate on imports from that country.

It also was contended that this was a discrimination in favor of certain American interests and injurious to others.

Senator Smoot, republican, Utah, took exception to many of the statements of the witnesses presenting the case for the American companies. He declared that conditions in Cuba were no worse than those in this country and announced that he favored the protection of American capital invested in this country as against American capital invested in other countries.

Spokesmen for the industry in the United States testified that the best sugar industry had been developed in seventeen states; that there was invested in it \$200,000,000 with ninety-five factories. It is now producing annually one million tons of sugar, or nearly one-fourth of the domestic consumption, and is reclaiming waste land because the beets will grow where other crops will not. The acreage now is 180,000 and the farmers raising the crop number 100,000, who give employment to an additional 85,000.

Expansion Is Possible. Given proper protection, the witnesses argued, the industry would expand where it could supply most of the domestic demand and in case of war make the country independent of foreign supplies. It also was contended that the raising of beets improved farm lands. As to the tax on the people represented in the duty, it was contended that this amounted to only \$1.44 for each inhabitant each year and that the industry was worth such an expenditure.

EXPERT RATIONING OF FOOD FOR HUMANS IS TAUGHT AT K. S. A. C.

(By The Associated Press.) Manhattan, Kan., Dec. 19--Expert food rationing as taught at the Kansas State Agricultural college isn't confined to the livestock families. The general public comes in for its share of attention. Girls attending college who are under weight are of special interest to the women food dietitians of the home economics department; also members of girls' clubs in various counties organized under auspices of the field agents of the college. Miss Ethel Preiner of the home economics department reports a case of an Anderson county girl who added six pounds to her weight in a single month by adding a pint of milk a day to her diet.

HOUSE WILL TAKE UP ANTI-LYNCHING BILL

(By The Associated Press.) Washington, Dec. 19--After a bitter fight the house today voted to take up the Dyer anti-lynching bill under a rule limiting general debate to ten hours. Leaders, however, have agreed that the measure will not be pressed to a final vote before the Christmas recess.

CONSTABLE IN JAIL ON BURGLARY CHARGE

(By The Associated Press.) Hillsboro, Ill., Dec. 19--Constable R. F. Battleson of Greenville was in jail here today following the issuance of a warrant yesterday charging him with burglary in connection with the \$25,000 robbery of the Bank of Panama at Panama last week.

For Colds, Grip or Influenza, and as a Preventive, take YAZZATICA BROMO QUININE Tablets. The genuine bears the signature of E. W. Groves. (Be sure you get BROMO.) 50c.

A Good Cough Medicine. It speaks well of a cough medicine, when druggists use it in their own families. In preference to any other, J. Goldenfild, druggist, Van Etten, N. Y., writes: "I have sold Chamberlain's Cough Remedy for years with complete satisfaction to myself and customers. I have always used it in my own family, both for ordinary coughs and colds and for the cough following the grip, and find it very efficacious."

STOCK INDUSTRY IN NEW MEXICO FACES DISASTER

(Continued from Page One.)

year there were 1,700,000 sheep dipped, while 1,600,000 were returned for taxation.

STATE TAX OFFICIALS ASSEMBLE AT CAPITAL

Santa Fe, N. M., Dec. 19--Tax officials and others interested in the improvement of the present system of taxation, gathered from all over New Mexico, are here attending the annual conference, under call of the state tax commission. Governor Merritt C. Mechem is among those in attendance. The conference will end Wednesday afternoon. It is the opinion of the commission that the conference will be the most important held thus far, since a great many new matters, under the revised revenue code will have to be taken up and a definite policy decided upon.

Position of the commission was outlined at the first session in a paper carefully prepared by J. E. Saint, chief commissioner. The last legislature authorized \$1,200 in compensation and \$1,200 in traveling expenses for deputy assessors in each county. The commission holds that this sum ought not to be paid to one deputy to remain on duty for the entire year, but should be divided so as to employ several deputies between January 1 and May 1, when practically all of the assessment work is done.

Plea is made for the re-enactment of a law similar to chapter 115, laws of 1919, which was repealed by the last legislature. This act authorized the commission to fix the value of grazing lands, which was done by dividing the state into districts according to rainfall, moisture, etc. The classification now falls upon the county assessors.

Valuing of merchandise stocks is exhaustively treated, and assessors are urged to be impartial, and yet to use their best judgment in every instance in an effort to see that the state receives a fair return. Official notice is taken of the fact that in some sections large areas are producing fine crops on "dry farming lands," and ought not longer to be assessed as non-producing lands. It is the judgment of the commission that heretofore these lands have been undervalued. In conclusion, the paper says:

"The rate of taxation so become so high in New Mexico that it has almost reached the breaking point. Heretofore the assessors have been charged with neglect of duty and the claim made that fifty to seventy-five millions of dollars escaped taxation through omissions and undervaluations. This coming year under the new law we expect a radical change in the method and efficiency of assessing property. Let us get all the property on the rolls. Then it is up to the men who appropriate the money to reduce the cost of government."

HUGE COLISEUM TO BE ERECTED IN LOS ANGELES

Approximately \$800,000 Has Been Raised and Work Will Start Soon; Will Seat 75,000.

Los Angeles, Calif., Dec. 19--Approximately \$800,000 has been raised in Los Angeles for the purpose of erecting a huge coliseum, with a seating capacity of 75,000, at Exposition park here, according to William May Garland, head of a community development association, which has organized to promote the project.

The money is in a Los Angeles bank and work on the big structure will start soon, it has been announced. The task will be completed, it is believed, early in 1923. When completed the coliseum will be used for athletic meets, pageants, parades, conventions and other public events. For more than four years Los Angeles has been working on plans for the coliseum. Careful study of similar structures throughout the United States and Europe has been made and the new coliseum will embody many fine points contained in similar structures erected previously, as well as many original features.

Wood and concrete will be used in the construction, but eventually it will all be of concrete. The big coliseum will be elliptical in shape, a combination of amphitheater and stadium. The field will be thirty feet below the ground level, seats will extend back from the field to a height of fifty feet above the ground, and trees, flowers and shrubs will be planted on the sloping exterior.

The playing field will be 680 feet long and 344 feet wide and around it will be a running track 1,665 feet long, with a 220-yard straightaway track on one side. There will be sufficient space inside the track for baseball, football, soccer and other games. Lights will be installed to permit use of the structure at night.

There will be eighty-six entrances and exits aside from a big main entrance or peristyle, which will be built along the mission lines. A tunnel thirty-eight feet wide and twenty-eight feet high will provide entrance for parades and pageants.

Under an agreement among the city of Los Angeles, the county of Los Angeles, and the Community Development association, the last named will build the coliseum. The city and county for an annual rent will have equal rights of occupancy with the association for ten years, at the end of which the coliseum becomes the sole property of the city and county.

RECLAMATION OF THE VALLEY OF INTEREST TO FEDERAL BUREAU

(Continued from Page One.)

able be useless under the present changing business conditions. Indian Land Provided For. H. F. Robinson, supervisor of the Indian irrigation service, stated that estimates made two years ago for the reclamation of the Indian lands in this section had placed the cost at approximately \$22 an acre. Following the survey of the Indian lands in the middle valley, a report was made to congress and provision made for the expense of reclaiming the Indian lands, which Mr. Robinson stated amounted to about 40 per cent of the total reclaimable lands. In this section, money for the work has been appropriated during the past two years.

Prospects Bright. "I believe the prospects for reclamation in this valley are very bright," Director Davis stated. "Secretary Fall and I expect to make another trip through the valley next spring and at that time will reach more definite conclusions regarding it."

"When the time for the project arrives, it will be limited by laws and funds, just as any other similar project, and special legislation will be necessary, to make it possible."

The director concluded by saying that the reclamation of this part of the valley would be much easier than the lower part, due to the greater fall of the river. He also pointed out the fact that the government could only start and complete a drainage project when it had become necessary through irrigation work done by the government.

"Drainage can only be done by the bureau when it is a part of an irrigation project," he reminded those who attended the meeting. However, as irrigation always necessitates drainage, this presents no stumbling block in the way of the complete reclamation of this part of the valley through federal assistance.

Resolutions were passed at the chamber meeting endorsing the Smith-Nary bill, thanking Director Davis for his visit to the city and offering the reclamation bureau the closest co-operation in working out the proposed project in this part of the valley.

Journal Want Ads bring results.

ALBUQUERQUE Business College Skill and Learning are in demand. Awkwardness and ignorance command nothing in the way of earning power. This School has SKILLFUL, EXPERIENCED, SPECIALIZED TEACHERS. The courses are thorough, modern and complete. Our students are in demand and are being placed as fast as they complete our courses.

ARRANGE FOR A COURSE IN OUR WINTER TERM. It doesn't cost much.

New Mexico Steel Co. Inc. Bolts, makers and welders. 2100 S. Second St. Tel. 1917-M.

Wind Shield Glass-Lumber J. C. BALDRIE LUMBER CO. 422 South First Street. Phone 402

A TREASURE HOUSE OF GIFTS



Second Street At Copper

Telephone 75

—The two spacious floors of Strong Brothers Furniture Store may truly be called a treasure house of gifts. Here are the usefully beautiful things sensible people are giving this year.

—On the first floor is everything from the sturdy toys you would expect to find here to such individual gift pieces as Royal easy chairs, foot stools, sewing cabinets, fancy baskets and art objects.

—On the second floor are arranged in rooms, so you might view them as they would look in your own home, bed room, living room and dining room suites, in all upholstering and finishes.

STRONG BROS FURNITURE

Open Evenings Until Christmas



15 Day Bicycle Sale. Largest stock of high-grade bicycles ever shown in Albuquerque, at reduced prices. BROAD BICYCLE & TRADING CO., 220 South Second Street.

Journal want ads get results

FOR SALE WATER MOTOR

Inquire JOURNAL OFFICE

C. H. CARNES SPECIALIST IN OCULAR REFRACTION 107 S. Fourth. Phone 1057-W

LUMBER GLASS, PAINT, CEMENT, PLASTER.

ALBUQUERQUE LUMBER COMPANY 423 NORTH FIRST STREET.

ALL COAL PRICES REDUCED \$1.25 PER TON. TRY OUR FANCY EGG \$11.25

AZTEC FUEL COMPANY

Phone 251 L. J. MILLER, Pres.

PIGGY WIGGLY Bulletin

DO YOUR CHRISTMAS SHOPPING HERE

And put your saving in the bank; 15 cents will deliver 100 pounds anywhere in Albuquerque. The saving on one item that you buy here will deliver the entire order.

EGGS

Strictly Fresh, Home Ranch Eggs Look at the price, per doz. .65c

BUTTER

Brookfield and Hollywood Creamery Butter. Only per lb. .45c

ORANGES

Plenty of Oranges. Per dozen 25c to 70c

MINCE MEAT

None Such, .17c
Heinz, 1 lb. glass, .41c
Heinz, 2 lbs. glass, .80c
Heinz, 1 lb. tin, .33c
Heinz, 2 lb. tin, .60c

OLIVES

Large Queen Olives, qt. glass, 77c
Old Monk Brand, 5-oz. glass, 13c
Ripe Olives, pt. tins, .30c
Old Monk Brand, Stuffed, 9-oz. glass, .37c

PICKLES

A big assortment of Heinz goods just received--Such as Sweet and Sour Pickles, India Relish, Apple Butter, Spaghetti, Chow Chow.

PUDDING

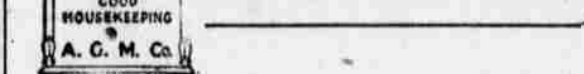
Heinz Plum Pudding--
Small tins, .23c
Extra large tins, .86c
Heinz Fig Pudding--
Small tins, .23c
Large tins, .49c

NUTS

Bordo Brand, in glasses--
Shelled Walnuts, 3 1/2-oz., .34c
Shelled Walnuts, 4 1/2-oz., .45c
Shelled Almonds, 5-oz., .45c
Shelled Pecans, 1 1/2-oz., .25c
Shelled Pecans, 4-oz., .48c
Jumbo Salted Peanuts, 5-oz., .23c

Prices Quoted By Us Are Good Until the Market Changes.

In Gift Boxes



The Mirro Aluminum people have scored again for you. They have put up in gift boxes some of their most wanted pieces of Aluminum. You cannot go wrong if you give Mirro Aluminum for Christmas. The recipient KNOWS Mirro if she reads the women's magazines. She knows that Mirro Aluminum is the best aluminum on the market. She is familiar, through the national advertisements, with the many points of superiority that make Mirro stand for convenience, economy. She is familiar with the attractive designs. She knows about the Mirro guarantee of lasting for a generation of the hardest kind of wear. The following pieces of Mirro are packed in Holly decorated gift boxes--all ready for giving.

Colonial Double Boilers....\$4.00
Colonial Tea Kettle.....\$6.00
Colonial Coffee Percolator..\$3.50
Colonial Tea Pots.....\$4.50
Colonial Tea Pots.....\$2.50
Salt Shaker, Pepper, Toothpick holder, tray......50

RAABE & MAUGER

"IF IT'S HARDWARE WE HAVE IT"

First and Copper Phone 74

Give Useful Gifts--of Hardware--for Christmas

CONTINUED IMPROVEMENT SEEN IN BUSINESS CONDITIONS BOTH IN UNITED STATES AND ABROAD

Although No Immediate Boom Can Be Forecast, a Slow But Sure Recovery is to Be Expected, Treasury Officials Say; War Finance Corporation is Aiding Farmers.

(By The Associated Press.)
Washington, Dec. 19.—Continued improvement in business conditions both in this country and abroad were forecast today by treasury officials. Discussing the world's business outlook, they declared marked improvement could be seen and that although no immediate business boom could be forecast, a slow but sure recovery in conditions was to be expected.

Such improvement as has taken place, officials declared, has been due to natural causes and in the continued operation of natural readjustment of general betterment would be experienced. Improvement in foreign exchange, particularly the rise in the pound sterling, was cited as an example of improvement abroad and, it was said, that while the situation in many European countries was serious, it could not now be considered as desperate.

In this country, officials asserted, clamor for assistance in the cotton sections had ceased while efforts of the war finance corporation was believed to be materially relieving conditions in the agricultural and livestock industry. At the same time, it was pointed out, federal reserve re-discount rate and com-

BULLION RECOVERED FROM SUNKEN LINER

(By The Associated Press.)
London, Dec. 19.—Nearly \$25,000,000 worth of bullion has been recovered from the liner *Laurentic*, which was sunk in January, 1917, off the north coast of Ireland by a German submarine.

Operations have been suspended for the winter, but they will be resumed again in the spring when an effort will be made to recover the remaining \$16,000,000 to \$15,000,000 worth of bullion which is said to be still at the bottom of the sea.

Great difficulties have been encountered by the salvage crew, for after three years pounding by the Atlantic swells the liner has been transformed into a heap of twisted debris. Her decks, which settled down on the sea bottom, cover an area of several hundreds of feet. The wreck was previously covered with gravel and silt, as it is in a position by which it received the full force of the Atlantic gales.

This obstruction had to be removed, as far as possible, by powerful pumps placed in position by the divers, as the gold was at the bottom of the huge mass of wreckage.

Journal Want Ads bring results.

Great difficulties have been encountered by the salvage crew, for after three years pounding by the Atlantic swells the liner has been transformed into a heap of twisted debris. Her decks, which settled down on the sea bottom, cover an area of several hundreds of feet. The wreck was previously covered with gravel and silt, as it is in a position by which it received the full force of the Atlantic gales.

This obstruction had to be removed, as far as possible, by powerful pumps placed in position by the divers, as the gold was at the bottom of the huge mass of wreckage.

Journal Want Ads bring results.

Great difficulties have been encountered by the salvage crew, for after three years pounding by the Atlantic swells the liner has been transformed into a heap of twisted debris. Her decks, which settled down on the sea bottom, cover an area of several hundreds of feet. The wreck was previously covered with gravel and silt, as it is in a position by which it received the full force of the Atlantic gales.

This obstruction had to be removed, as far as possible, by powerful pumps placed in position by the divers, as the gold was at the bottom of the huge mass of wreckage.

Journal Want Ads bring results.

Great difficulties have been encountered by the salvage crew, for after three years pounding by the Atlantic swells the liner has been transformed into a heap of twisted debris. Her decks, which settled down on the sea bottom, cover an area of several hundreds of feet. The wreck was previously covered with gravel and silt, as it is in a position by which it received the full force of the Atlantic gales.

This obstruction had to be removed, as far as possible, by powerful pumps placed in position by the divers, as the gold was at the bottom of the huge mass of wreckage.

Journal Want Ads bring results.

Great difficulties have been encountered by the salvage crew, for after three years pounding by the Atlantic swells the liner has been transformed into a heap of twisted debris. Her decks, which settled down on the sea bottom, cover an area of several hundreds of feet. The wreck was previously covered with gravel and silt, as it is in a position by which it received the full force of the Atlantic gales.

This obstruction had to be removed, as far as possible, by powerful pumps placed in position by the divers, as the gold was at the bottom of the huge mass of wreckage.

Journal Want Ads bring results.

Great difficulties have been encountered by the salvage crew, for after three years pounding by the Atlantic swells the liner has been transformed into a heap of twisted debris. Her decks, which settled down on the sea bottom, cover an area of several hundreds of feet. The wreck was previously covered with gravel and silt, as it is in a position by which it received the full force of the Atlantic gales.

This obstruction had to be removed, as far as possible, by powerful pumps placed in position by the divers, as the gold was at the bottom of the huge mass of wreckage.

Journal Want Ads bring results.

Great difficulties have been encountered by the salvage crew, for after three years pounding by the Atlantic swells the liner has been transformed into a heap of twisted debris. Her decks, which settled down on the sea bottom, cover an area of several hundreds of feet. The wreck was previously covered with gravel and silt, as it is in a position by which it received the full force of the Atlantic gales.

This obstruction had to be removed, as far as possible, by powerful pumps placed in position by the divers, as the gold was at the bottom of the huge mass of wreckage.

Journal Want Ads bring results.

Great difficulties have been encountered by the salvage crew, for after three years pounding by the Atlantic swells the liner has been transformed into a heap of twisted debris. Her decks, which settled down on the sea bottom, cover an area of several hundreds of feet. The wreck was previously covered with gravel and silt, as it is in a position by which it received the full force of the Atlantic gales.

This obstruction had to be removed, as far as possible, by powerful pumps placed in position by the divers, as the gold was at the bottom of the huge mass of wreckage.

Journal Want Ads bring results.

Great difficulties have been encountered by the salvage crew, for after three years pounding by the Atlantic swells the liner has been transformed into a heap of twisted debris. Her decks, which settled down on the sea bottom, cover an area of several hundreds of feet. The wreck was previously covered with gravel and silt, as it is in a position by which it received the full force of the Atlantic gales.

STATE WITNESS STICKS TO TALE IN BURCH CASE

Efforts Are Made to Impeach Woman's Testimony At Trial of Man Accused of Murder.

(By The Associated Press.)
Los Angeles, Dec. 19.—Efforts to impeach the testimony of state witnesses in the trial of Arthur C. Burch for the alleged murder of J. Belton Kennedy characterized the opening of Burch's defense today.

The attacks were directed at statements of Mrs. Elizabeth Besant, that she saw Burch in Beverly Glen both before and after Kennedy was shot to death there, and C. S. Sumner, that he saw Burch at a point near the Pacific ocean, eight miles from the Glen, soon after the tragedy. Both persons, according to defense witnesses, made statements outside of court, at variance with their testimony.

Mrs. Besant was called to the stand in order to have questions put to her that would lay the foundation for the attempt at impeachment. She was asked if she had not stated to several persons that she heard two shots fired, both before she left her house for the scene of the tragedy, she denied having made such a statement, sticking to the story she told in direct examination, which was that she left the house after the first shot. She also denied that she said Mrs. Madalynne Obenchain co-defendant of Burch, acted just after the shooting "like a woman who had had a friend killed."

A. C. BURCH TRIAL HAS ENTERED FIFTH WEEK
Los Angeles, Calif., Dec. 19.—The fifth week of the trial of Arthur C. Burch, charged with the murder of J. Belton Kennedy, began in the superior court here today.

The defense was prepared to open its case, but the state secured permission to offer another witness, although it had rested last week. Before the state's new witness was called, however, Colonel H. H. Hartwell, chief of the United States weather bureau here, took the stand for the defense so that he might be excused from further attendance.

Colonel Hartwell was excused, the state called its final witness, J. M. Stevenson, an employee of the district attorney's office. He testified he was in the county jail when a physician examined Burch, the object already had been identified as a thorn, and evidence introduced to prove that a bush bearing similar thorns grew where the persons who shot Kennedy stood to do the shooting.

The defense attorneys then proceeded to offer motions aimed against various parts of the prosecution evidence. First they moved to strike out all conversations to which Burch was not a party; then they moved specifically to strike out conversations between Mrs. Madalynne Obenchain, Burch's co-defendant, and Mrs. Jalliff, who was a casual acquaintance of Mrs. Obenchain's, met in a beauty parlor; to strike out the evidence of Mrs. Whitlow, a clairvoyant, as to conversations she had with Mrs. Obenchain, and to strike out all letters and telegrams between Mrs. Obenchain and Kennedy, the man for whose murder Burch is on trial.

All motions were denied. Counsel then suggested that each side name a commission of physicians to examine Burch as to his sanity, and agreed that one man from each side testify as to their findings, for the purpose, it was explained, of saving time before the jury. The prosecution declined to agree to this. The defense announced that its evidence about Burch's sanity or lack of it would take two weeks, and other presentation of the evidence about a week.

Mrs. Rowena Wright and the Rev. H. J. Hartwell, residents of Beverly Glen, testified that darkness sets in there about half to three-quarters of an hour earlier than in open country. The Glen is in a canyon with high hills on either side. The Reverend Mr. Hartwell said he recalled that the night of August 8, was "quite dark one," but he thought he could have recognized a person at a distance of fifteen feet.

Chester Hansen, a newspaper reporter, testified concerning a conversation he said he had last September with C. S. Sumner, prosecution witness. Sumner testified he saw Burch seated in a roadster near Santa Monica, eight miles from the scene of the shooting. Hansen said Sumner told him he "could not be sure" the person he saw was Burch.

Defense attorneys announced they would call Mrs. Elizabeth Besant to the stand in the afternoon. Mrs. Besant testified for the state she saw Burch in the Glen the night of the shooting. The purpose of recalling her was to put questions that would form the foundation for other testimony, it was stated.

GOMPERS OF INDIA SAYS HIS NATION ASKS FREE STATE



M. Barman Pestonji Wadia, organizer of the first labor union in India and now a powerful newspaper man and leader of the Nationalist party, has come to the U. S. He is a strong advocate of independence for the British colonial possessions, but says that his people at present ask only as much as Ireland received. He was interned at the beginning of the war by the British because of his attacks against the empire.

MORE PAVING IN AVERAGE CITY OF DUKE CITY SIZE

Questionnaire Shows Fifty Towns Selected at Random From Central West Have Greater Paved Area

Attempting to find where Albuquerque ranked with the other cities of smaller size in the country with reference to paving, the Morning Journal compiled figures from fifty cities located in the middle west and found that Albuquerque's percentage of paved streets is 15 while the average is over 40 per cent.

Questions received from advertising agencies frequently ask how many blocks of city streets there are in the city and how many are paved. This information goes to national advertisers who wish to know the character of the market they are thinking of "working."

Seeking to see how Albuquerque stood, requests for statistics were sent to the leading newspapers of cities of about 20,000 in the middle west. In fairness to Albuquerque, New England or coast towns were not used. The cities covered were: Port Smith, Ark.; Pine Bluff, Ark.; Alameda, Calif.; San Bernardino, Calif.; Texarkana, Ark.; Boise, Idaho; Altam, Ill.; Belleville, Ill.; Bloomington, Ill.; Canton, Ill.; Anderson, Ind.; Elkhart, Ind.; La Fayette, Ind.; Logansport, Ind.; Michigan City, Ind.; New Albany, Ind.; Burlington, Ind.; Clinton, Ind.; Ottumwa, Ind.; Paducah, Ky.; Baton Rouge, La.; Ann Arbor, Mich.; Calumet, Mich.; Port Huron, Mich.; Winona, Minn.; Jackson, Miss.; Meridian, Miss.; Sedalia, Mo.; Joplin, Mo.; Great Falls, Mont.; Fargo, N. D.; Alliance, Ohio; Elyria, Ohio; Mansfield, Ohio; Marion, Ohio; Middletown, Ohio; Newark, Ohio; Sandusky, Ohio; Warren, Ohio; Zanesville, Ohio; Muskegon, Okla.; Sioux Falls, S. D.; Bristol, Tenn.; Ogden, Utah; Belknap, Wash.; Everett, Wash.; Parkersburg, W. V.; Beloit, Wis.; Eau Claire, Wis.; Green Bay, Wis. and La Crosse, Wis.

The following results were obtained:
Average number of blocks of streets in fifty cities the size of Albuquerque . . . 1002
Number of blocks of streets in Albuquerque . . . 564
Percentage of streets paved in fifty cities the size of Albuquerque . . . 40.4
Percentage of Albuquerque streets paved . . . 13.3
The number of blocks of streets in Albuquerque as listed is a little larger than the actual count, but includes those sections of the high-lands which are thickly settled. If only the area within the city limits is used, the number is still above 800 and the percentage is only slightly over 14.

OFFICIAL TASTER OF PROHIBITION FORCES THROWS UP HIS JOB

The official taster of the prohibition forces resigned his job yesterday. His decision came when the officers returned from Tucuman with a bottle of yellowish-gray fluid which smelled like O-Cedar oil mixed with decomposed horse-radish, and demanded that he sample the beverage.

The liquor is said to be pumped from the first that the prohibition officers have ever seen. It was found on the ranch of Ambrosio Ortega, about thirty miles from Tucuman. Seventy-five gallons of the mash were found, and all but a small quantity destroyed. Ortega was not at home when the raid was made.

At present the evidence remains untasted, though everyone within half a mile has smelled it.

DELTA RAINBOW ORCHESTRA TONIGHT. COLLEGE INN. EATS-SWEETS-DANCING.

TEXT BOOK of WALL STREET
1922 Edition
now ready for free distribution
McCall, Riley & Co.
Members Connecticut Stock Exchange of New York
20 Broad St., New York

ARIZONA ACT OF 1913 UPHOLD BY SUPREME COURT

(By The Associated Press.)
Washington, Dec. 19.—The Arizona act of 1913, prohibiting issuance of injunctions restraining picketing was, in effect upheld by the supreme court today, so far as it prevents interference with peaceful picketing.

In the case of William Truax and others, under consideration by the court, it was held, however, the methods of picketing used were illegal and should have been enjoined. Justice Holmes, Pitney, Brandeis and Clark dissented.

The supreme court, through its majority opinion, held that such a broad prohibition as attempted by the Arizona statute could not be sustained. Its decision, from the lines laid down in the recent decision in the Granite City (Illinois) case held in effect that the question of whether the method of picketing was legal must govern the application of the statute.

The minority held that a state could prohibit the granting of an injunction in cases of picketing by courts without statute. If the legislators believe there is more danger that an injunction will be productive of more evil than would follow picketing, he contended, it is within the power of the legislature to prohibit injunctions in such cases. He opposed instructions to the state courts to issue an injunction in the present case.

William Truax, restaurant proprietor at Bisbee, Ariz., sought to enjoin labor union picketing during a strike of his employees, contending that the picketing constituted a secondary boycott. The lower courts dismissed the case, sustaining the state statute which permitted "peaceful" picketing and prohibited judicial interference.

DECISION ENDS 5-YEAR BATTLE IN THE COURTS
Bisbee, Ariz., Dec. 19.—The decision of the United States supreme court, handed down today, ended a legal battle started in this city five years ago. The litigation, generally known as "The Truax Case," started in April, 1916, when the superior court of Cochise county refused to enjoin representatives of a labor organization from picketing a restaurant owned by William Truax.

The case was then appealed to the supreme court of Arizona and later by writ of error, to the United States supreme court, to test the constitutionality of paragraph 1464 of the revised statutes of Arizona, commonly known as the "Gompers anti-injunction law."

Counsel for Truax claimed that this statute was a glaring example of class legislation and that it violated the constitution of the United States by taking from some citizens a right freely accorded to others, thus denying them the equal protection of the law.

In furtherance of the strike and boycott, Truax claimed, the strikers stationed a number of pickets on the sidewalk in front of the restaurant, walked back and forth in front of the door, carrying banners, distributing circulars, accosting patrons and passers by and calling out loud tones and vociferous language their admonitions not to patronize his business. As a result of this conduct, there was a great falling off in Truax's trade and a serious danger that his business would be destroyed, it was declared.

HEROIC TELEPHONE EMPLOYEES HONORED
(By The Associated Press.)
Homer, Neb., Dec. 19.—More than 1,000 persons gathered at the impressive ceremonies held here yesterday in honor of Mrs. Mildred Lohrop and Frank Forest, telephone company employees who were awarded the Theodore N. Vail medal for heroic services during the Homer flood of May 21, 1920.

Governor Samuel R. McKelvie of Nebraska paid a glowing tribute to Mrs. Lohrop, the mother of five sons. She remained at her post as telephone operator and although the flood waters rose waist deep in the telephone office Mrs. Lohrop did not leave the switchboard until every subscriber on the line had been notified of the flood in Omaha creek.

Mr. Forest, a lineman, hastened from Dakota City to Homer and kept the wires working while Mrs. Lohrop completed her task.

Silver medals were presented to each on behalf of the American Telephone and Telegraph company by W. B. T. Belt, president of the Northwestern Bell Telephone company. Mrs. Lohrop also was awarded \$1,000, while Mr. Forest received \$250.

A superstitious belief in some countries is that it is unlucky to carry anything from the house on Christmas morning until something has been brought in.

INDIANS COP GAME TR M MENAUL BY A SCORE OF 31 TO 26

In a fast game the Albuquerque Indian school defeated Menaul last night, 31-26. The Indians displayed excellent pass work and good team work. However at first they were unable to connect with the goal and Menaul made the first scores.

At the end of the first period the Indians led, 15-6, but in the last half the Menaulites scored 20 points to the Indians' 16.

The contest was played in the Indian school gymnasium. In the first part of the game neither team could find the basket, but the ball was in the Indian's possession most of the time. Ahmie made a goal from the center of the floor and the Menaul forwards made their points from quick shooting under the basket.

In the last half, Menaul came back with a rush and played the Indians off their feet.

The line-ups:
Indians: F. Menaul, Mestas, Candelaria, J. Anallo, Martinez, Ahmie, G. Cruz, Paisano, Vasquez, Slow, G. Lash.
Field goals: Indians—Mestas, 5; J. Anallo, 2; Paisano, 2; Slow, 2; Ahmie, 1; F. Anallo, 1. Menaul: Candelaria, 6; Martinez, 3; Cruz, 2; Lash, 1.

Fouls: Mestas, 2; Candelaria, 2. Substitutions: Prieto for Candelaria; Candelaria for Martinez; Bellman for Slow; F. Anallo for J. Anallo.

Referee: Moore.

ROSSELL CHRISMAN IS CHOSEN A MEMBER OF THE DRAMATIC CLUB

(SPECIAL DISPATCH TO MORNING JOURNAL)
Cambridge, Mass., Dec. 19.—As a result of his remarkable dramatic work at Harvard and his high average in these studies during his three years at Cambridge, Roswell H. Chrisman, a prominent man of Albuquerque, N. M., and a junior at Harvard, has been elected to the dramatic club and will be officially admitted to that club at their final fall meeting on Saturday evening. Great care is taken in selecting members for this club and only those whose work at Harvard show marked results in the dramatic line are chosen for membership. One of the great honors looked forward to by the students at the college is to be admitted to membership of this club and above all to be chosen for a part in the Harvard dramatic club to participate in the annual Shakespearean play put on by the club at the close of each year. Mr. Chrisman's election is the result of six weeks' competition, he being chosen from fourteen competitors.

Roswell H. Chrisman is the son of Mr. and Mrs. W. H. Chrisman, former residents of Albuquerque. He is a graduate of the Albuquerque high school.

LOAN AGENCY BODY TO CONSIDER LOANS

A meeting of the executive committee of the agricultural loan agency will be held this morning at 10 o'clock at the office of the agency on a number of applications for loans which have been received recently.

The committee is composed of J. B. Herndon and A. G. Simms of Albuquerque and Lee Baldwin of Socorro. The meeting will be held in the loan agency's office in the N. T. Armijo building.

The peasants of Germany believe that if the fire burns brightly on Christmas morning it betokens prosperity during the year; if it smolders, adversity.

Golden Rule Store ALBUQUERQUE, N. MEX. AN OLD STORE WITH A NEW SPIRIT

BATH ROBES

The Ideal Christmas Gift

\$2.25 Infants Bath Robes, in blue and pink nursery patterns; sizes 1-2. Special. \$1.69

\$4.95 Children's Bath Robes, in pink, copen, grey, etc. Sizes 6-8-10. Special. . . \$3.79

\$7.95 Children's Bath Robes; sizes 8, 10 and 12, in tan, copen, pink, grey, etc., satin bound collar, cuffs and front. Special. . . \$5.95

\$10.00 Misses' and Women's Bath Robes, sizes 14 to 42. Made of Beacon robing, satin bound, color combinations of blue and tan, copen and tan, rose and grey, navy, etc. Specially priced. \$7.50

Women's Corduroy Bath Robes, sizes 14 to 44, in copen, cherry and rose. \$7.50 TO \$10.50

Open Evenings Until 8 p. m. for Xmas Shopping.

Christmas Dainties Order Early Brick Ice Cream

All kinds, including Fancy Center Molds of Christmas Trees, Christmas Bells, Hearts, Etc.

Also a large variety of Flavors in ICE CREAMS.

No Christmas Dinner Is Complete Without a Brick of Cream

MILK. CREAM. WHIPPING CREAM

Matthew Dairy & Supply Co.
Phone 420

Only Five Days Left

This is Christmas Week and the time we generally begin to think of the folks at home.

Make this a sensible Christmas and come to the store where he buys everything. We can tell you what he likes.

Bath Robes House Coats Pajamas
Hose Ties Mufflers Auto Robes
Gloves Handkerchiefs

Open Evenings Until Christmas

MAIL ORDERS DELIVERED FREE

E. L. WASHBURN Co.

"Albuquerque's Exclusive Clothiers"

Imported Cigars

We have just received a limited supply of Fine Imported Cigars

CAROLINA PERFECTO, 25 in box
ROMEO & JULIET PERFECTO 25 in box
PARTAGAS PANETELLA 25 in box

SMITH'S

(STURGES CIGAR STORE)
PHONE 298

As a special inducement to place the famous Federal Electric Washer in more homes this Christmas we have arranged to make terms of \$5.00 down and the balance in small monthly payments. Everybody knows about the points of superiority possessed by the Federal Electric; and it's a beautiful machine as well as efficient and economical one.

Sold on the terms we offer for Christmas you can own a Federal Electric Washer Machine for about what you pay your washerwoman each month.

STAR FURNITURE CO.
115 W. GOLD AVE. PHONE 409 W

SPECIAL TERMS ON FEDERAL ELECTRIC WASHERS

As a special inducement to place the famous Federal Electric Washer in more homes this Christmas we have arranged to make terms of \$5.00 down and the balance in small monthly payments. Everybody knows about the points of superiority possessed by the Federal Electric; and it's a beautiful machine as well as efficient and economical one.

Sold on the terms we offer for Christmas you can own a Federal Electric Washer Machine for about what you pay your washerwoman each month.

STAR FURNITURE CO.
115 W. GOLD AVE. PHONE 409 W

As a special inducement to place the famous Federal Electric Washer in more homes this Christmas we have arranged to make terms of \$5.00 down and the balance in small monthly payments. Everybody knows about the points of superiority possessed by the Federal Electric; and it's a beautiful machine as well as efficient and economical one.

Sold on the terms we offer for Christmas you can own a Federal Electric Washer Machine for about what you pay your washerwoman each month.

STAR FURNITURE CO.
115 W. GOLD AVE. PHONE 409 W

As a special inducement to place the famous Federal Electric Washer in more homes this Christmas we have arranged to make terms of \$5.00 down and the balance in small monthly payments. Everybody knows about the points of superiority possessed by the Federal Electric; and it's a beautiful machine as well as efficient and economical one.

Sold on the terms we offer for Christmas you can own a Federal Electric Washer Machine for about what you pay your washerwoman each month.

STAR FURNITURE CO.
115 W. GOLD AVE. PHONE 409 W

As a special inducement to place the famous Federal Electric Washer in more homes this Christmas we have arranged to make terms of \$5.00 down and the balance in small monthly payments. Everybody knows about the points of superiority possessed by the Federal Electric; and it's a beautiful machine as well as efficient and economical one.

Sold on the terms we offer for Christmas you can own a Federal Electric Washer Machine for about what you pay your washerwoman each month.

STAR FURNITURE CO.
115 W. GOLD AVE. PHONE 409 W

As a special inducement to place the famous Federal Electric Washer in more homes this Christmas we have arranged to make terms of \$5.00 down and the balance in small monthly payments. Everybody knows about the points of superiority possessed by the Federal Electric; and it's a beautiful machine as well as efficient and economical one.

Sold on the terms we offer for Christmas you can own a Federal Electric Washer Machine for about what you pay your washerwoman each month.

STAR FURNITURE CO.
115 W. GOLD AVE. PHONE 409 W

BELIEVE FRANCE WILL YIELD ON NAVAL PROBLEM

Situation is Somewhat Muddled But Her Ultimate Acceptance of U. S. Proposals is Predicted.

(By The Associated Press.)
Washington, Dec. 19 (By the Associated Press).—France has taken steps to reconcile her views on the naval ratio problem with those of the other powers but her precise attitude—now the crucial issue of the arms negotiations—remains in doubt.

Unofficial advices from abroad today indicated Premier Briand had decided to accept the American proposal for a French capital ship fleet of 17,000 tons in place of the 350,000 ton plan drawn by the French delegation.

Secretary Hughes, as chairman of the arms conference, also received from the premier a communication consisting of the state department as meaning that the French group had been directed to accede to the American program.

Message of Instructions.
But the French delegation did not so construe a long message of instructions received from the premier. They described it as advising them to go as far toward meeting the American views as they could without sacrifice of French national interests. It was said not to embody a specific decision nor to make reference to any specific tonnage plan.

With the negotiations in that situation, Mr. Hughes and Albert Sarraut, head of the French delegation, held a long conference late today. It was said only that the conversations were proceeding and that there was a mutual expectation of mutual agreement.

Note of Optimism.
In other quarters, also, there was apparent a distinct note of optimism, despite the day's mystifying developments. Among American officials an almost unanimous belief prevailed that France eventually would take the American figure for her capital ship allotment, even though she insisted on an increase of submarine tonnage as an offset. For the moment the negotiations are concerned solely with capital ships, and to many delegates, a five-power agreement on that subject does not seem far away.

It is pointed out by the Americans that even an effort by the French to adopt a conciliatory attitude towards the views of the United States may be regarded as a long step toward settlement. The American position has been that ratios should be adjusted on the basis of existing strength, while the 350,000 ton proposal of the French was predicated on the national needs. So if the French premier has done nothing more than approve the American "status quo" principle, he has contributed a great deal, in the view of American officials, toward final agreement.

Apprehension Quieted.
The message to Secretary Hughes was a sequel to last night's conference between Mr. Briand and Ambassador Harvey, at London, which press reports say resulted in the premier's acceptance of the American plan. Today there were signs that the situation might develop further complications because of the direct methods of negotiations adopted by Mr. Hughes, but the apprehension of the French delegates appeared to be quieted when it was explained that the secretary had acted as chairman of the conference and had addressed

IT SEEMED LIKE EVERY JOINT IN HER BODY ACHED

"It's just wonderful the way Tanlac has helped my rheumatism. Why, it has done for me what all the medicines I took in ten years, including a six weeks' treatment at the Springs failed to do," said Mrs. N. W. Hatch, 365 La Martine St., San Francisco, Cal.

"Every time I go down town now I am thankful to this wonderful medicine, for before I took it I was hardly able to get around the house. Every joint in my body hurt me and my ankles and hands were badly swollen. My hips gave me a good deal of pain, too. I suffered so I couldn't get much rest at night as it was almost impossible for me to get in a comfortable position in bed."

"Tanlac helped me right from the start. My father was a doctor and I've had considerable experience with medicine but Tanlac beats them all. I never hoped to get the wonderful relief I have received. I am free from aches and pains and the swelling has almost entirely gone from all my joints. Every day now I do my housework and take long walks that I couldn't have done before and I feel stronger and sleep better than I have in years. My appetite is just splendid, in fact, Tanlac has benefited me in every way."

Tanlac is sold in Albuquerque by the Alvarado Pharmacy and all other leading druggists everywhere. —Adv.

A GREAT BOON

There are many mothers, nervous and rundown in vitality, to whom.

Scott's Emulsion

would be a great boon. It's the very genius of Scott's Emulsion to build strength.

Scott & Bowne, Bloomfield, N. J.

ALSO MAKERS OF

KI-MOIDS

(Tablets or Granules)

FOR INDIGESTION

Mr. Briand as head of the French delegation.

Delicacy of Position.
The delicacy of the position in which the French delegation found themselves was increased by announcement of the results of the London conference in press dispatches which came ahead of the premier's instructions. In the flurry at delegation headquarters, some lesser French officials talked of the possibility of a cabinet crisis in France, should it prove true that Mr. Briand had suddenly thrown over the 350,000 ton plan for which his representatives here were stoutly contending.

Delegates would not go into details regarding the premier's message, but there were indications that they had not found it distasteful. It was declared to be rather in the nature of counsel and advice than a mandate and was said to leave the real decision to those on the ground here. Whether the 350,000 ton plan is to be pressed again when the committee of 15 assemblies tomorrow, was not revealed.

Submarine Strength.
There were many indications that with any accession on the capital ship question, the French would attempt to associate some form of assurance that they will be given the privilege of increasing their submarine strength. There is no tendency to link the two into one formal agreement, but it is apparent that the French want it made clear that whatever ratio they accept for capital ships shall not apply also to auxiliary craft.

Naval Holiday Plan.
It is not improbable that the French representatives also will want such a modification of the naval holiday plan as will permit them to replace their obsolescent battleships with vessels of the post-Jutland type so far as they can build them within the specified tonnage limit. Because of the war, the French naval experts declare their fleet is badly in need of replacement. A replacement provision would not be a surprise in the final French program accepted by the other powers.

Increasing Complications.
The submarine problem which is to be taken up when the five-power ratio for capital ships is settled, presents increasing complications. Great Britain wants to abolish the submarine and has asked to present her case against it at a public session of the conference. There is no expectation even by the British, however, that they will carry the point, but they do hope to cut in half the submarine tonnage permitted by the American plan.

Under this plan, Great Britain would have 30,000 tons in submarines, the United States 40,000 and Japan 20,000. Fixing out the ratio on the same basis a 175,000 ton capacity ship fleet for France would allow her a submarine tonnage of 30,000 tons. That would be very far below the figure the French desire, especially if they are to accept the American figures on capital ships.

The British desire to restrict closely submarine construction is said to rest not only on considerations of national difference, but on principles of national difference. When used against merchantmen, the underwater craft also constitutes a menace to the maritime nations of which Great Britain is the most influential.

Can Curtail Activities.
In view of the American and French naval experts, however, and perhaps those also of Italy and Japan, the activities of the submarine against merchant shipping can be curtailed by an agreement on new rules of warfare, leaving only purely military considerations involved.

As the capital ship problem verges toward a decision, the naval experts are giving more and more of their attention to the submarine question, as one likely to present a troublesome knot.

Necessity for Recession.
Although the French capital ship discussions simmered down at their crucial stage to direct exchanges between Mr. Hughes and Premier Briand, it was learned today that the American delegates repeatedly had sought to impress on the French delegates in informal conferences, the necessity for a recession from the 350,000 ton plan.

In these behind the scenes consultations, the French were told that they were proceeding on a false basis, which should be destroyed before it would be possible to erect any sound structure to shelter the conceptions of relief of the world from the heavy burden of competitive naval increase. It was pointed out that there was no disposition whatever by America to question the right of France to build any number of ships she cared to construct to meet the needs of naval defense. America did not challenge that inherent right if France chose to exercise it, it was explained.

Primary Purpose.
But on the other hand, it was pointed out, America had the right to recall to the French mind the primary purpose of the conference to which France had subscribed.

That purpose, it was said, was not to fix what should be the naval strength of the various nations, but simply to get them to agree to stop the ruinous race for naval supremacy. It was pointed out that America had voluntarily undertaken to scrap ships to the value of \$300,000,000, and Great Britain had met this proposal by agreeing to duplicate it. Then it was asked what sacrifice was France to make to compensate these concessions.

Four Golfers Left
IN MATCH FOR STATE NATIONAL BANK PRIZE
Four players survive in the tournament for the State National trophy who will compete in the semi-finals which will be played on the Monday after Christmas. These are McDonald, Fraser, P. F. McCanna and Herkenhoff. McDonald won from Cornish, Jr., Sunday, three up and two to go; Fraser won from Otero, five up and three to go; McCanna defeated Strome, three up and two to go; and Herkenhoff won from Murphy, one up on nineteen holes.

McDonald, Fraser and White were the winners of the turkeys at the Country club Sunday with scores respectively as follows: 77, 71 and 72.

Martin Starnfinski, professional golf player, who has been in San Diego for the past three months, and who was formerly with the Country club here, will return shortly to resume his position with that club. He will take charge of the course here, preparing it for the exhibition match between Jock Hutchison and Jim Barnes, champion players, who will be here in February.

DELTA RAINBOW ORCHESTRA TONIGHT, COLLEGE INN. EATS—SWEETS—DANCING.

REALTORS GIVE ENTIRE DAY TO HOTEL CANVASS

All Workers to Lunch at Doris Tea Room; But \$114,575 Needed to Complete Hotel Fund.

With the most workers promised for today of any since the renewal of the Albuquerque hotel drive, the biggest luncheon of the campaign will be held this noon when the campaigners and others interested in the hotel will meet at the Doris Tea room to report. Every person who is sufficiently interested in the erection of the hotel to devote even a few hours of time toward its promotion is urged to attend the luncheon.

A check of the subscriptions last night revealed the fact that but \$114,575 remains to be raised for the Albuquerque hotel. The renewal of the drive has already netted more than \$55,000.

Interesting data gathered from the subscription lists show that there are more subscriptions of more than \$200 than there are of less than \$100. There are 455 buyers of stock in amounts ranging from \$100 to \$450 each. Eighty Albuquerqueans have purchased stock in blocks of from \$500 to \$400. Blocks of stock ranging from \$1,000 to \$2,000 have been purchased by 43 persons. Five buyers have subscribed for amounts ranging from \$2,000 to \$5,000; four persons have bought from \$5,000 to \$10,000 worth of stock each and one Albuquerquean has invested \$10,000 in the project. The total amount now raised is \$235,425. Real estate office in the city will close today. All of the realtors

Safe Milk for INFANTS and INVALIDS

ASK FOR Horlick's the Original Avoid Imitations and Substitutes
For Infants, Invalids and Growing Children The Original Food-Drink For All Ages Rich milk, malted grain extract in powder No Cooking—Nourishing—Digestible

COMMUNITY PLATE

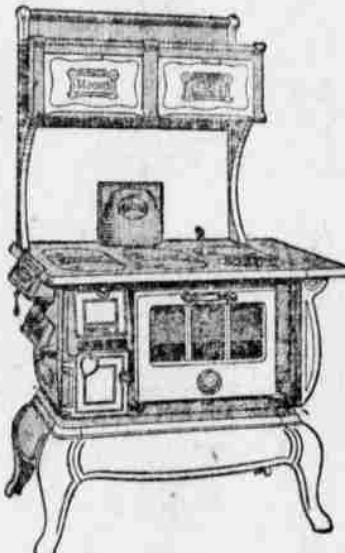
FOR CHRISTMAS GIFTS

WHITNEY HARDWARE CO.

Less \$40

We Have One Only—Blue Enameled Moore Range at \$40.00 off the regular price.

This stove was slightly damaged from water in the hotel above but is absolutely new and fully guaranteed.



The Exchange

Buy Sell or Trade.

120 West Gold.

Phone 1111.

Special

Holiday

Excursion Fares

On Sale December 22-23-24, 1921

Final return limit January 4, 1922

Fares will apply where one-way rate is \$25.00 or less. The minimum excursion fare being \$2.50

Here is your opportunity—

—grasp it—GO!!

Let me give you details, actual rates, and get your reservations.

R. W. HOYT, Agent.

Phone 204

Albuquerque.

Rosenwald's Jewelry Department Offers:

STERLING SILVER VANITIES

—AT FIRE SALE PRICES

TORTISE SHELL AND IVORY TOILET SETS

—AT FIRE SALE PRICES

SOLID GOLD and GOLD FILLED BRACELET WATCHES

—AT FIRE SALE PRICES

DIAMOND RINGS, BROOCHES AND SCARF PINS

—AT FIRE SALE PRICES

CHESTS OF STERLING SILVERWARE

—AT FIRE SALE PRICES

SOLID SILVER BOWLS, TRAYS AND SANDWICH PLATES

—AT FIRE SALE PRICES

MEN'S SOLID GOLD and GOLD FILLED WATCHES

—AT FIRE SALE PRICES

PICARD HAND PAINTED CHINA

—AT FIRE SALE PRICES

QUADRUPLE PLATE HOLLOW AND FLAT WARE

—AT FIRE SALE PRICES

PEARL NECKLACES

—AT FIRE SALE PRICES

SOLID GOLD and GOLD FILLED CUFF BUTTONS

—AT FIRE SALE PRICES

CAMEO BROOCHES

—AT FIRE SALE PRICES

SOLID GOLD and GOLD FILLED WATCH CHAINS

—AT FIRE SALE PRICES

RINGS FOR MEN, WOMEN AND CHILDREN

—AT FIRE SALE PRICES

ALL TYPES OF NOVELTY NECKLACES

—AT FIRE SALE PRICES

STERLING SILVER and PLATED CIGARETTE CASES

—AT FIRE SALE PRICES

In the Second Floor Gift Shop

COTY'S, HOUBIGANT'S, HUDNUT'S, PALMERS', PIVERS' AND MANY OTHER PERFUMES, TOILET WATERS AND EXQUISITE GIFT SETS

--AT FIRE SALE PRICES

TOYS! TOYS!

Ample Assortments

at FIRE SALE PRICES

Rosenwald's

New Mexico's
Leading Gift Store

Woman's Daily Magazine Page

BEAUTY CHATS

By Edna Kent Forbes.

HOME-MADE COLD CREAMS.

At one time it was much less expensive to make cold creams at home, but since then the prices of separate items in the drug stores have gone up so much that I find



Home-made Cold Creams Are Usually Best.

sometimes practically no difference. The big concerns which manufacture creams buy in such quantities and often control the

source of their supplies so that they do not feel the rising prices as keenly as the little woman who purchases 50 cents or a dollar's worth of materials. But even so it is much less expensive to make your own nourishing or flesh building cream. For a quality similar to the cream I am giving today you have to pay several dollars. This cream contains almond oil which has become very expensive in recent years. Its formula is:

Rose water—4 ounces.
Almond oil—1 ounce.
Spermaceti—1 ounce.
White wax—1 ounce.
Benzoin—1 drachm.

To make a particularly white nice cream add 30 grains of powdered borax. This cream is also cleansing but too fine and too expensive to be used for ordinary cleansing purposes. Cleansing creams are made with mineral oil which is still quite cheap but which is not nourishing and of no use at all if you are trying to smooth out wrinkles or make a chapped skin soft.

If you use four ounces of olive oil, instead of the almond oil, you will have a cream that is practically as nourishing and probably less expensive. But be sure that the olive oil is of very good quality. Marcella B. Both lemon juice and baking soda are bleaches for blonde hair because both are drying, and it is the oil in the hair which makes it turn brown. This method, however, will not make brown hair blonde. In the last strong bleach would have to be used, and this, of course, is not advisable. It will not hurt your hair, however, if you put a small spoonful of baking soda, or the juice of half a lemon in the last rinse water, when the hair is shampooed. If you can dry your hair in the sun, it will make it that much prettier.

Mrs. W. A. B. The brown spots on the skin are probably the result of a sluggish liver. Have your doctor give you a tonic.

Social Calendar

By Edna Kent Forbes.

Christmas Party at Phi Mu sorority house at 3 p. m.

Christmas party at Phi Mu sorority house at 3 p. m.

Elks auxiliary will fill stockings at club at 2 p. m.

Tuesday club will meet with Mrs. R. W. D. Bryan at 2:30 p. m.

BLACK VELVET IN SIMPLE DESIGN



Many yards of black velvet are used to make this very simple frock of French design. Soft gray fur edges the cuffs and the skirt and novel embroidery in dull gold braid marks a low waist line and gives a divided effect to the front of the skirt.

I shut myself away from human companionship. Mrs. Walters is older than I, yet she seems years younger because she keeps in touch with life and people. I am sure she is doing right, that I have been wrong not to have lived a different life. But I can't do that. You won't feel old at 26. I shouldn't, yet I do. You see I have let myself get old. A mother only 20 years older than a child, when married as young as I was should be a companion as well as a mother to that child. But—

"You have always gone everywhere with me—"

"Yes, dear. But I have gone as an older person—one through with pleasure, a looker on at the happiness, the amusements of others. I don't want to live like that any longer. I want to share your amusements, your pleasures."

There flashed through Margaret's mind a picture of herself at Joan's birthday party when she was 14. A lonely young-old woman sitting on a log watching the children, toasting marshmallows, longing to be with them, one of them. She saw also the rose colored sweater she wore, and which, because of Joan's remark that she was too old to wear such things, she had sheepishly taken off and warmed her fingers—and her heart—in its folds as it lay unobserved in her lap. Now she waited Joan's reply to her revolt against being considered too old to play to enjoy.

"Perhaps, Mumsie, I haven't quite understood about the clothes. I have thought so many times since we have known Mrs. Walters. Yet—sometimes I think I have been right not to want you to make yourself young. Having a daughter is different than having a son."

"Well, dear, from now on I shall try to enjoy life. I cannot accept invitations, make social engagements unless I have appropriate clothes. We will not discuss the matter again, but I am finished with drab ugly clothes, just as I am finished—in as far as I can control it—with a lonely life while you are with your young friends."

"But I wasn't always little and helpless," Joan interrupted.

"No, dear, but as you grew older I had become indifferent, in a rut. But I feel that now I owe something to myself, to Margaret Hayden as well as to Joan Hayden. I feel you do not need me as you did. You are a very capable young girl, have your friends, your studies, your amusements. I am again becoming lonely. Often I wish to have my friends of both sexes just as you do; to get some pleasure out of life, some of the things I have missed because of the years

ago. I have missed because of the years

ago. I have missed because of the years

ago. I have missed because of the years

ago. I have missed because of the years

ago. I have missed because of the years

ago. I have missed because of the years

ago. I have missed because of the years

ago. I have missed because of the years

ago. I have missed because of the years

ago. I have missed because of the years

ago. I have missed because of the years

ago. I have missed because of the years

ago. I have missed because of the years

ago. I have missed because of the years

ago. I have missed because of the years

ago. I have missed because of the years

ago. I have missed because of the years

ago. I have missed because of the years

ago. I have missed because of the years

ago. I have missed because of the years

ago. I have missed because of the years

ago. I have missed because of the years

ago. I have missed because of the years

ago. I have missed because of the years

ago. I have missed because of the years

ago. I have missed because of the years

ago. I have missed because of the years

ago. I have missed because of the years

ago. I have missed because of the years

ago. I have missed because of the years

ago. I have missed because of the years

ago. I have missed because of the years

ago. I have missed because of the years

ago. I have missed because of the years

ago. I have missed because of the years

ago. I have missed because of the years

ago. I have missed because of the years

ago. I have missed because of the years

ago. I have missed because of the years

ago. I have missed because of the years

ago. I have missed because of the years

ago. I have missed because of the years

ago. I have missed because of the years

ago. I have missed because of the years

ago. I have missed because of the years

ago. I have missed because of the years

ago. I have missed because of the years

ago. I have missed because of the years

ago. I have missed because of the years

ago. I have missed because of the years

ago. I have missed because of the years

ago. I have missed because of the years

ago. I have missed because of the years

ago. I have missed because of the years

ago. I have missed because of the years

ago. I have missed because of the years

ago. I have missed because of the years

ago. I have missed because of the years

ago. I have missed because of the years

ago. I have missed because of the years

ago. I have missed because of the years

ago. I have missed because of the years

RIPPLING RHYMES

By WAIT MASON.

MELANCHOLY.

The winter days are colder than any days should be; in one week I grow older than I should grow in three; oh, sorrow seems my portion. I'm full of sad emotion while rubbing Johnson's lotion upon my starboard knee. I see the young ones playing and whooping with a will; they're skating and they're sleighing upon the icy hills; ah, would that I could follow and in the snowdrifts walk with them. I sit here and swallow Doc Ginger's Duplex Pills. Play on, oh youthful friskers, your youth will not endure! Soon you'll be wearing whiskers, and grief will dog your sport; like you I once was playing; adown the hillside sleighing; and now you see me spraying my

limbs with Spavin Cure. Once I was young and stalwart, no blemish did I own except a rather small wart fermenting my collarbone; but youthful years go flying, and now you see me sighing, consuming pills and trying to can the do-dard for green. My sorrow seems a fixture, in vain I try to smile, while taking Johnson's Mixture of Tar and Castor Oil; I'm old and tired and gloomy, my eyes are weak and rheumy, and pharmacists come to me and bear away my pile. But when the clouds are parted, and sunshine's streaming through, I won't be broken-hearted, I won't be sad and blue; it's when the heavens clear up you see the old boys cheer up; and now for Jenkins' Syrup of Cocklebur and Glue.

EFFICIENT HOUSEKEEPING

By LAURA A. KIRKMAN.

ANSWERED LETTERS.

Thrifty Housekeeper: "This Christmas I am going to serve roast goose instead of turkey, but don't know of any way to make a hot dish of the left-overs. Please print such a recipe, as I like to know just how to make the most of a certain food before buying it. (Of course, I know how to roast it.) Also give me a menu containing roast goose."

Answer: Tomorrow I will print a menu for a roast goose dinner for Christmas day, giving three recipes to go with it. The day after Christmas I would advise you to serve the goose cold and sliced—just as you would cold turkey. But the following day try this delicious dish for dinner:

Rechauffe of Goose: Cut the remaining meat from the carcass of the goose in neat slices (although small) and lay in a saucepan with a sprinkling of minced ham and onion between the slices. Cover with the left-over salt and heat slowly to the boiling point. Remove the meat to a hot platter, add to the gravy a tablespoon of red current jelly and a tablespoon of Worcester sauce, and let it cook, stirring constantly for 3 minutes. Then pour this gravy over the meat and serve at once.

I admire your thoroughness in planning your meals ahead and learning how to use an unfamiliar food before putting your money into it. So many housekeepers neglect such planning and then wonder why their food budget is so high!

Church Worker: "In planning a turkey supper for a church, how many turkeys would be required to serve 125 persons?"

Answer: Three 16-pound turkeys. You see one 16-pound bird will serve the people, so that 16 pounds will be just about right.

Mrs. G.: "Can you give me a recipe for dressing made with sour cream to serve on cold slaw?"

Answer: Sauté Cream: Salad Dressing: Mix 1 cup of sour cream with 1 slightly beaten egg, and 1-1 cup vinegar. Now sift together 1-1-2 teaspoons of salt, 2 teaspoons of sugar, 1 teaspoon of mustard, a dash of pepper, and add a very little juice from a raw, grated onion. Add this second mixture to the first and let it cook over the fire until it coats a spoon. Cool, and thin with more sour cream if necessary.

A Young Girl: "I surely did ap-

preciate your recent article on making chocolate creams, and am writing you to ask if you won't print some more good candy directions?"

Answer: Send a stamped, self-addressed envelope and I will gladly send you a candy article. I have just had printed out to send out to any reader who wants it. This article is called "Six Good Home-Made Candies," and contains recipes for Chocolate Creams, Coffee Fennels, Chocolate Bonbons, Tinned Peppermint Bonbons, Almond Marshmallow Fudge and Cream Candy. But don't forget the stamped, addressed envelope!

Reader: "Is there any low-priced grocery that I can grow myself, for a centerpiece for my dining table?"

Answer: Yes. Plant grapefruit seed thickly in rich earth, in a good-looking piece of pottery. This gives a refreshing bit of greenness and is most satisfactory.

Answer: Yes. Plant grapefruit seed thickly in rich earth, in a good-looking piece of pottery. This gives a refreshing bit of greenness and is most satisfactory.

Answer: Yes. Plant grapefruit seed thickly in rich earth, in a good-looking piece of pottery. This gives a refreshing bit of greenness and is most satisfactory.

Answer: Yes. Plant grapefruit seed thickly in rich earth, in a good-looking piece of pottery. This gives a refreshing bit of greenness and is most satisfactory.

Answer: Yes. Plant grapefruit seed thickly in rich earth, in a good-looking piece of pottery. This gives a refreshing bit of greenness and is most satisfactory.

Answer: Yes. Plant grapefruit seed thickly in rich earth, in a good-looking piece of pottery. This gives a refreshing bit of greenness and is most satisfactory.

Answer: Yes. Plant grapefruit seed thickly in rich earth, in a good-looking piece of pottery. This gives a refreshing bit of greenness and is most satisfactory.

Answer: Yes. Plant grapefruit seed thickly in rich earth, in a good-looking piece of pottery. This gives a refreshing bit of greenness and is most satisfactory.

Answer: Yes. Plant grapefruit seed thickly in rich earth, in a good-looking piece of pottery. This gives a refreshing bit of greenness and is most satisfactory.

Answer: Yes. Plant grapefruit seed thickly in rich earth, in a good-looking piece of pottery. This gives a refreshing bit of greenness and is most satisfactory.

Answer: Yes. Plant grapefruit seed thickly in rich earth, in a good-looking piece of pottery. This gives a refreshing bit of greenness and is most satisfactory.

Answer: Yes. Plant grapefruit seed thickly in rich earth, in a good-looking piece of pottery. This gives a refreshing bit of greenness and is most satisfactory.

Answer: Yes. Plant grapefruit seed thickly in rich earth, in a good-looking piece of pottery. This gives a refreshing bit of greenness and is most satisfactory.

Answer: Yes. Plant grapefruit seed thickly in rich earth, in a good-looking piece of pottery. This gives a refreshing bit of greenness and is most satisfactory.

Answer: Yes. Plant grapefruit seed thickly in rich earth, in a good-looking piece of pottery. This gives a refreshing bit of greenness and is most satisfactory.

Answer: Yes. Plant grapefruit seed thickly in rich earth, in a good-looking piece of pottery. This gives a refreshing bit of greenness and is most satisfactory.

Answer: Yes. Plant grapefruit seed thickly in rich earth, in a good-looking piece of pottery. This gives a refreshing bit of greenness and is most satisfactory.

Answer: Yes. Plant grapefruit seed thickly in rich earth, in a good-looking piece of pottery. This gives a refreshing bit of greenness and is most satisfactory.

Answer: Yes. Plant grapefruit seed thickly in rich earth, in a good-looking piece of pottery. This gives a refreshing bit of greenness and is most satisfactory.

Answer: Yes. Plant grapefruit seed thickly in rich earth, in a good-looking piece of pottery. This gives a refreshing bit of greenness and is most satisfactory.

Answer: Yes. Plant grapefruit seed thickly in rich earth, in a good-looking piece of pottery. This gives a refreshing bit of greenness and is most satisfactory.

Answer: Yes. Plant grapefruit seed thickly in rich earth, in a good-looking piece of pottery. This gives a refreshing bit of greenness and is most satisfactory.

Answer: Yes. Plant grapefruit seed thickly in rich earth, in a good-looking piece of pottery. This gives a refreshing bit of greenness and is most satisfactory.

Answer: Yes. Plant grapefruit seed thickly in rich earth, in a good-looking piece of pottery. This gives a refreshing bit of greenness and is most satisfactory.

Answer: Yes. Plant grapefruit seed thickly in rich earth, in a good-looking piece of pottery. This gives a refreshing bit of greenness and is most satisfactory.

Answer: Yes. Plant grapefruit seed thickly in rich earth, in a good-looking piece of pottery. This gives a refreshing bit of greenness and is most satisfactory.

Answer: Yes. Plant grapefruit seed thickly in rich earth, in a good-looking piece of pottery. This gives a refreshing bit of greenness and is most satisfactory.

Answer: Yes. Plant grapefruit seed thickly in rich earth, in a good-looking piece of pottery. This gives a refreshing bit of greenness and is most satisfactory.

Answer: Yes. Plant grapefruit seed thickly in rich earth, in a good-looking piece of pottery. This gives a refreshing bit of greenness and is most satisfactory.

Answer: Yes. Plant grapefruit seed thickly in rich earth, in a good-looking piece of pottery. This gives a refreshing bit of greenness and is most satisfactory.

Answer: Yes. Plant grapefruit seed thickly in rich earth, in a good-looking piece of pottery. This gives a refreshing bit of greenness and is most satisfactory.

Answer: Yes. Plant grapefruit seed thickly in rich earth, in a good-looking piece of pottery. This gives a refreshing bit of greenness and is most satisfactory.

Answer: Yes. Plant grapefruit seed thickly in rich earth, in a good-looking piece of pottery. This gives a refreshing bit of greenness and is most satisfactory.

Answer: Yes. Plant grapefruit seed thickly in rich earth, in a good-looking piece of pottery. This gives a refreshing bit of greenness and is most satisfactory.

Answer: Yes. Plant grapefruit seed thickly in rich earth, in a good-looking piece of pottery. This gives a refreshing bit of greenness and is most satisfactory.

Answer: Yes. Plant grapefruit seed thickly in rich earth, in a good-looking piece of pottery. This gives a refreshing bit of greenness and is most satisfactory.

Answer: Yes. Plant grapefruit seed thickly in rich earth, in a good-looking piece of pottery. This gives a refreshing bit of greenness and is most satisfactory.

Answer: Yes. Plant grapefruit seed thickly in rich earth, in a good-looking piece of pottery. This gives a refreshing bit of greenness and is most satisfactory.

Answer: Yes. Plant grapefruit seed thickly in rich earth, in a good-looking piece of pottery. This gives a refreshing bit of greenness and is most satisfactory.

Answer: Yes. Plant grapefruit seed thickly in rich earth, in a good-looking piece of pottery. This gives a refreshing bit of greenness and is most satisfactory.

Answer: Yes. Plant grapefruit seed thickly in rich earth, in a good-looking piece of pottery. This gives a refreshing bit of greenness and is most satisfactory.

Answer: Yes. Plant grapefruit seed thickly in rich earth, in a good-looking piece of pottery. This gives a refreshing bit of greenness and is most satisfactory.

Answer: Yes. Plant grapefruit seed thickly in rich earth, in a good-looking piece of pottery. This gives a refreshing bit of greenness and is most satisfactory.

Answer: Yes. Plant grapefruit seed thickly in rich earth, in a good-looking piece of pottery. This gives a refreshing bit of greenness and is most satisfactory.

Answer: Yes. Plant grapefruit seed thickly in rich earth, in a good-looking piece of pottery. This gives a refreshing bit of greenness and is most satisfactory.

Answer: Yes. Plant grapefruit seed thickly in rich earth, in a good-looking piece of pottery. This gives a refreshing bit of greenness and is most satisfactory.

Answer: Yes. Plant grapefruit seed thickly in rich earth, in a good-looking piece of pottery. This gives a refreshing bit of greenness and is most satisfactory.

Answer: Yes. Plant grapefruit seed thickly in rich earth, in a good-looking piece of pottery. This gives a refreshing bit of greenness and is most satisfactory.

Answer: Yes. Plant grapefruit seed thickly in rich earth, in a good-looking piece of pottery. This gives a refreshing bit of greenness and is most satisfactory.

Answer: Yes. Plant grapefruit seed thickly in rich earth, in a good-looking piece of pottery. This gives a refreshing bit of greenness and is most satisfactory.

Answer: Yes. Plant grapefruit seed thickly in rich earth, in a good-looking piece of pottery. This gives a refreshing bit of greenness and is most satisfactory.

Answer: Yes. Plant grapefruit seed thickly in rich earth, in a good-looking piece of pottery. This gives a refreshing bit of greenness and is most satisfactory.

Answer: Yes. Plant grapefruit seed thickly in rich earth, in a good-looking piece of pottery. This gives a refreshing bit of greenness and is most satisfactory.

Answer: Yes. Plant grapefruit seed thickly in rich earth, in a good-looking piece of pottery. This gives a refreshing bit of greenness and is most satisfactory.

Answer: Yes. Plant grapefruit seed thickly in rich earth, in a good-looking piece of pottery. This gives a refreshing bit of greenness and is most satisfactory.

Answer: Yes. Plant grapefruit seed thickly in rich earth, in a good-looking piece of pottery. This gives a refreshing bit of greenness and is most satisfactory.

Answer: Yes. Plant grapefruit seed thickly in rich earth, in a good-looking piece of pottery. This gives a refreshing bit of greenness and is most satisfactory.

Answer: Yes. Plant grapefruit seed thickly in rich earth, in a good-looking piece of pottery. This gives a refreshing bit of greenness and is most satisfactory.

Answer: Yes. Plant grapefruit seed thickly in rich earth, in a good-looking piece of pottery. This gives a refreshing bit of greenness and is most satisfactory.

Answer: Yes. Plant grapefruit seed thickly in rich earth, in a good-looking piece of pottery. This gives a refreshing bit of greenness and is most satisfactory.

Answer: Yes. Plant grapefruit seed thickly in rich earth, in a good-looking piece of pottery. This gives a refreshing bit of greenness and is most satisfactory.

Answer: Yes. Plant grapefruit seed thickly in rich earth, in a good-looking piece of pottery. This gives a refreshing bit of greenness and is most satisfactory.

Answer: Yes. Plant grapefruit seed thickly in rich earth, in a good-looking piece of pottery. This gives a refreshing bit of greenness and is most satisfactory.

Answer: Yes. Plant grapefruit seed thickly in rich earth, in a good-looking piece of pottery. This gives a refreshing bit of greenness and is most satisfactory.

Answer: Yes. Plant grapefruit seed thickly in rich earth, in a good-looking piece of pottery. This gives a refreshing bit of greenness and is most satisfactory.

Answer: Yes. Plant grapefruit seed thickly in rich earth, in a good-looking piece of pottery. This gives a refreshing bit of greenness and is most satisfactory.

Answer: Yes. Plant grapefruit seed thickly in rich earth, in a good-looking piece of pottery. This gives a refreshing bit of greenness and is most satisfactory.

Answer: Yes. Plant grapefruit seed thickly in rich earth, in a good-looking piece of pottery. This gives a refreshing bit of greenness and is most satisfactory.

Answer: Yes. Plant grapefruit seed thickly in rich earth, in a good-looking piece of pottery. This gives a refreshing bit of greenness and is most satisfactory.

Answer: Yes. Plant grapefruit seed thickly in rich earth, in a good-looking piece of pottery. This gives a refreshing bit of greenness and is most satisfactory.

Answer: Yes. Plant grapefruit seed thickly in rich earth, in a good-looking piece of pottery. This gives a refreshing bit of greenness and is most satisfactory.

Answer: Yes. Plant grapefruit seed thickly in rich earth, in a good-looking piece of pottery. This gives a refreshing bit of greenness and is most satisfactory.

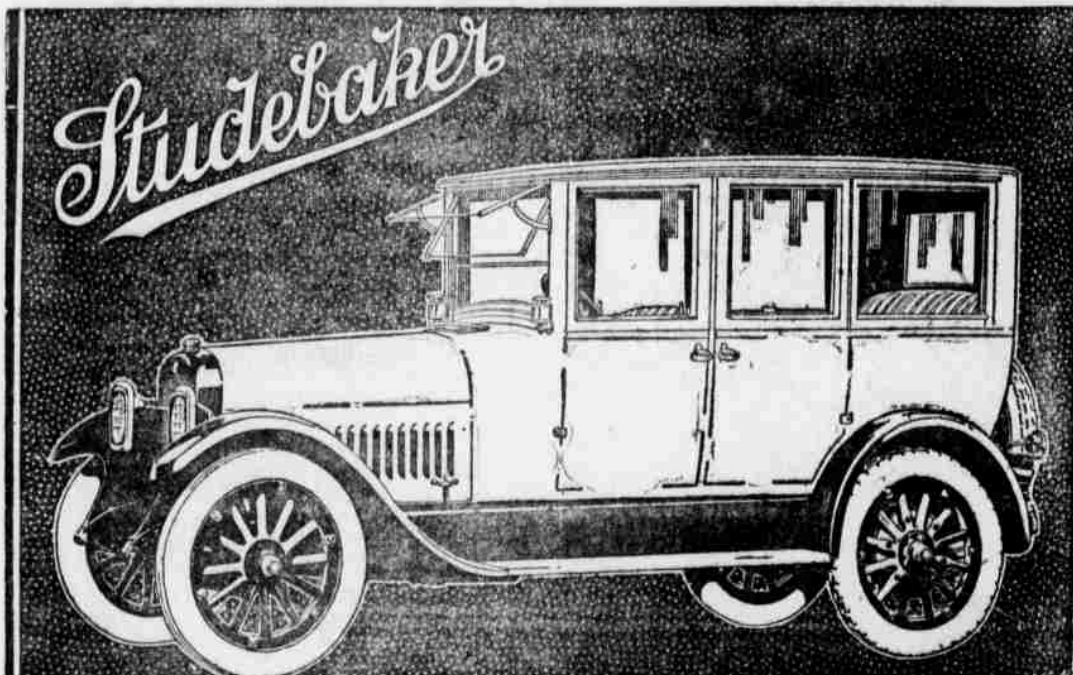
Answer: Yes. Plant grapefruit seed thickly in rich earth, in a good-looking piece of pottery. This gives a refreshing bit of greenness and is most satisfactory.

Answer: Yes. Plant grapefruit seed thickly in rich earth, in a good-looking piece of pottery. This gives a refreshing bit of greenness and is most satisfactory.

Answer: Yes. Plant grapefruit seed thickly in rich earth, in a good-looking piece of pottery. This gives

FATEFUL CLOSING HOURS

WHO WILL WIN This Beautiful Sedan? GRAND CAPITAL PRIZE



1922 MODEL STUDEBAKER SIX SEDAN, VALUE \$2,295.
OR WINNER MAY SELECT BIG "6" 7-PASS. STUDEBAKER TOURING CAR
PURCHASED FROM AND ON DISPLAY AT
COOPER MOTOR CO., Albuquerque, N. M.

IMPORTANT NOTICE!

No Personal Checks will be accepted in the Sealed Ballot Box. If any are deposited in the box, they will be thrown out and no credits issued. Only Currency, Gold and Silver, Money Orders, Express Orders, Cashiers' Checks and Certified Checks will be accepted.

Candidates will during this last week of the campaign have all checks made out to them personally and cash same and deposit the money in the box. This ruling is made in fairness to all candidates in the race and will be strictly adhered to.

THIRD PERIOD

Schedule of Credits and Subscription Price of the Morning Journal

THIRD CREDIT PERIOD

From December 18th to December 22nd (last week of Campaign), the following number of Credits will be issued on subscriptions:

	Price.	Credits.
6 Months.....	\$ 4.75	2,500
1 Year.....	9.00	6,000
2 Years.....	18.00	15,000
3 Years.....	27.00	30,000
4 Years.....	36.00	60,000
5 Years.....	45.00	120,000
6 Years.....	54.00	180,000

In addition to the above vote schedule, 100,000 EXTRA FREE VOTES will be given with every \$27.00 "club" of subscriptions turned in.

FINAL FATEFUL HOURS

With the final hour, 10 o'clock Thursday night, emblazoned on their minds, stirring scenes are being enacted by candidates in the Salesmanship Club Campaign, now swiftly drawing to a close.

Aroused to unprecedented opportunities of winning the beautiful Studebaker Sedan, Studebaker Touring Car, the Chevrolet Touring Cars, and many other big prizes, each passing hour is instilling new energy into ambitious workers. Everywhere they are swarming in eager and anxious quest for subscriptions that will win them the big credits—and in the end an automobile.

These workers pay no attention to frequent rumors that circulate with the hope of damaging effect. Misleading stories have one object—influencing some candidate to retire for fear of being passed by someone else in the race. Such tales have no foundation whatever. It is obvious that no one can determine the ultimate result of the campaign.

Courage and downright hustle are the two main things to observe. Credits are the only things that will win the prize, and every candidate should—and, for that matter, is—taking upon himself and herself to just annex as many credits as possible between now and the close.

ONLY THREE MORE DAYS

How to Get the Most Credits

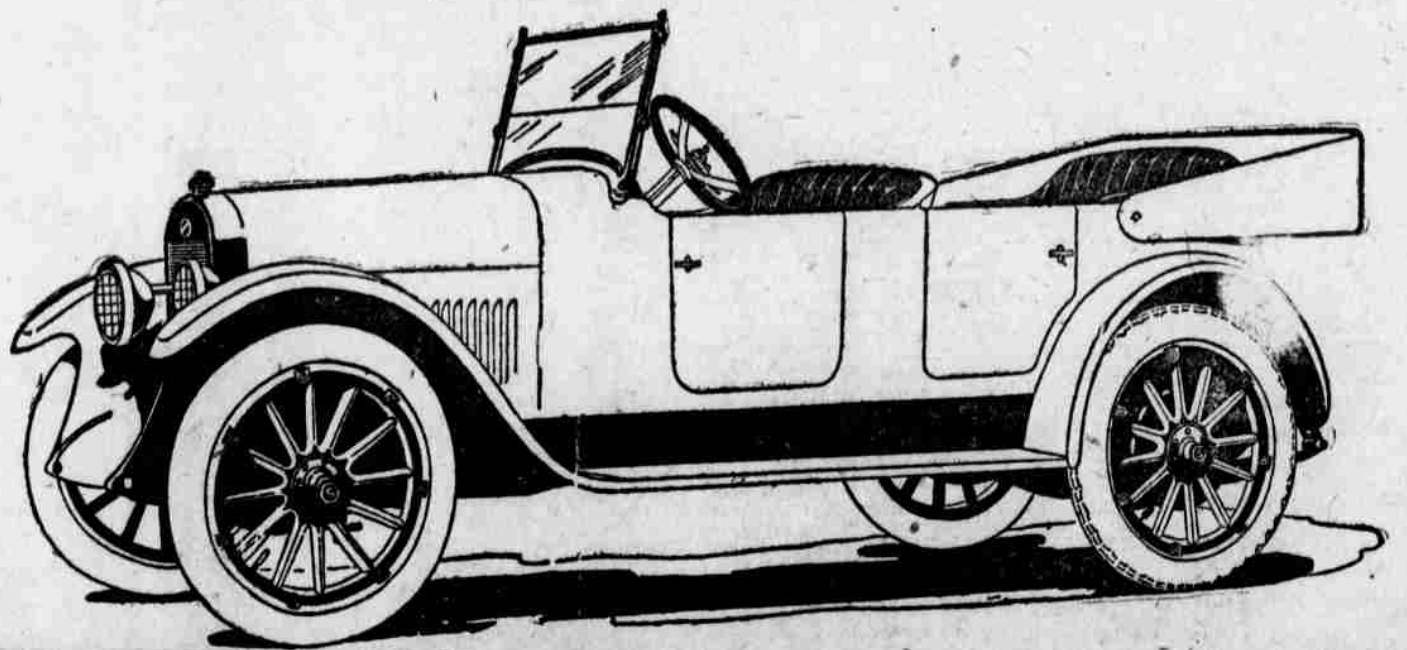
A glance at the credit schedule will show you the big credit value of long term subscriptions. For example, one six year subscription counts 180,000 credits; while a one year subscription counts only 6,000. In other words, one long term subscription is many times more valuable than a one-year subscription.

Figure this out for yourself. It is easy to see that the club member who gets one or two long term subscriptions this week is the one who has the best chance for success. In fact, a few long term subscriptions turned in from unexpected sources would make a new leader in the race.

Keep in mind, too, that every \$27.00 "Club" of subscription collections turned in entitles you to 100,000 EXTRA FREE CREDITS. Besides the regular number of credits allowed on the subscriptions.

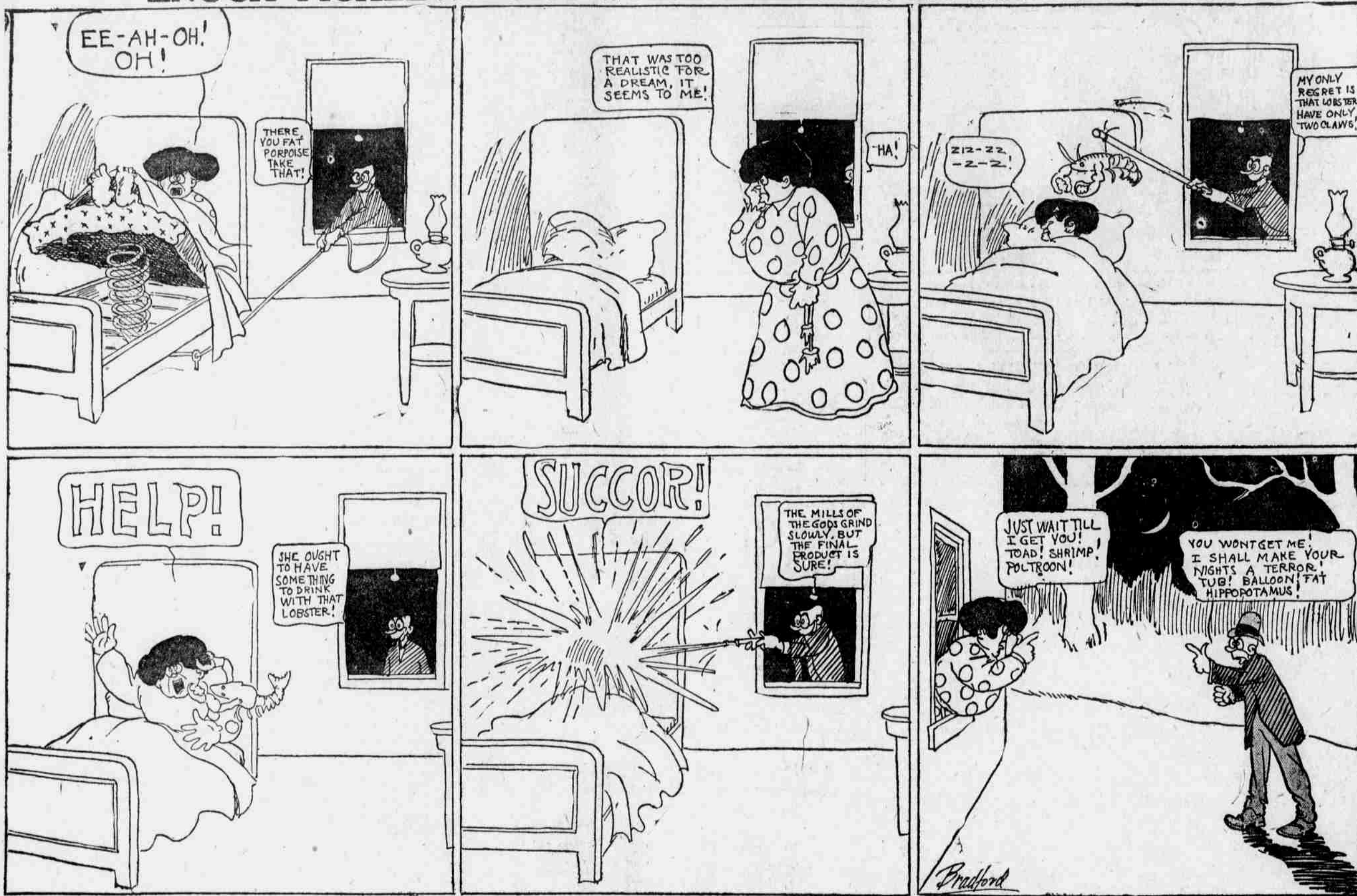
So—remember to keep after some of those long term subscriptions which are the biggest in credit value. That's the way to win the prize of your choice.

SECOND CAPITAL PRIZE

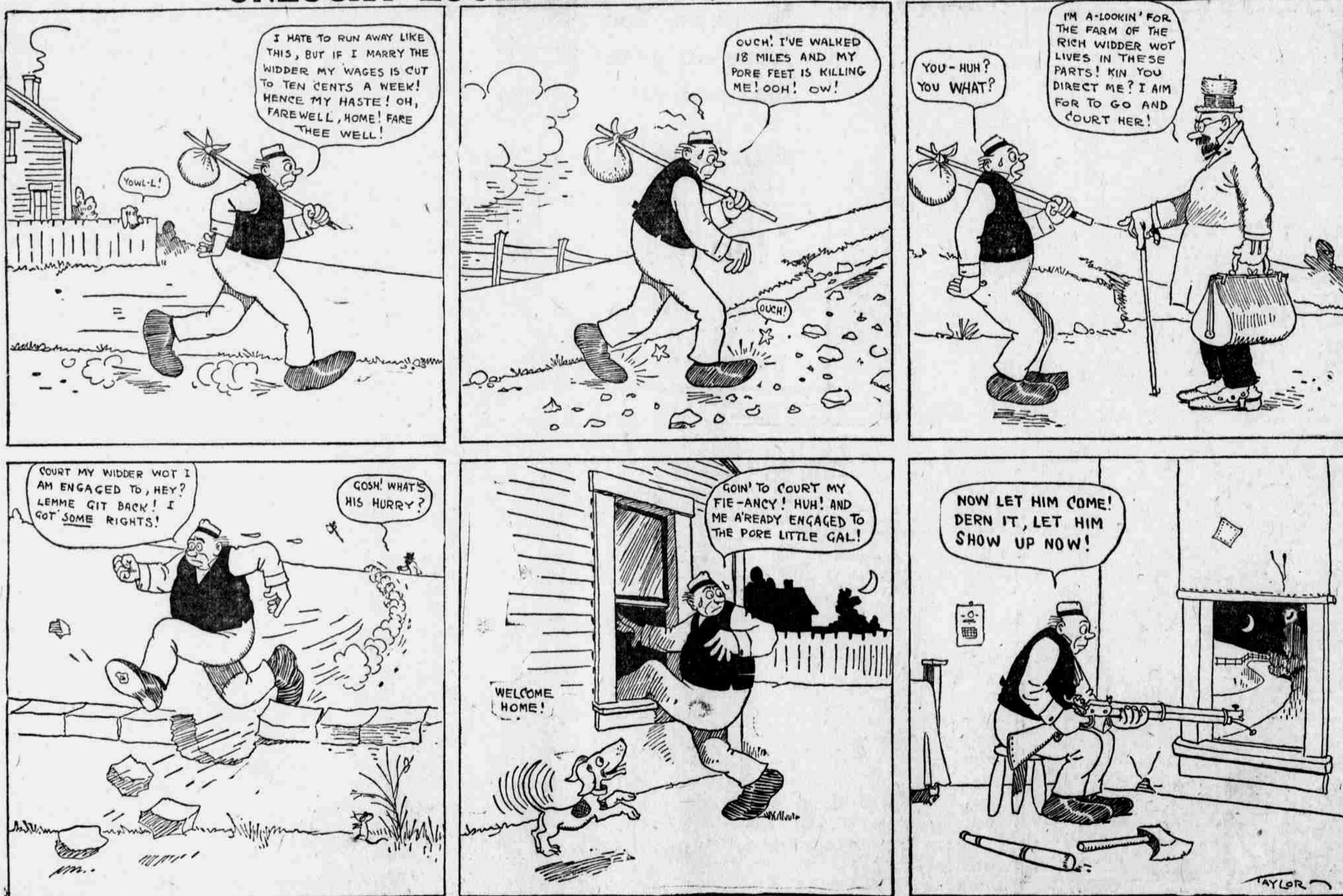


1922 MODEL STUDEBAKER LIGHT "6" TOURING CAR, WIRE WHEEL EQUIPMENT, VALUE \$1450
Purchased From and on Display at COOPER MOTOR CO.

ENOCH PICKLEWEIGHT STILL BELIEVES IN RETALIATION



UNLUCKY LOOIE DEPARTS, BUT RETURNS ANON



BOMB THREAT IN METROPOLIS IS MADE LIGHT OF

Prediction That Skyscrapers Would Be Laid Low Is Not Taken Seriously; Morgan Is Unattended.

(By The Associated Press.)
New York, Dec. 19 (By The Associated Press.)—No developments. This was today's report, both on the second explosion against which Wall Street had been warned, and the government's investigation on the 1920 blast.

Lower Manhattan apparently failed to take seriously letters mailed to brokers, predicting that by nightfall skyscrapers within a five block radius of the stock exchange would be laid low.

Clerks appeared concerned only with getting to work on time. J. P. Morgan, who was supposed to be the chief object of the plot, arrived, unattended at his office at his regular hour. The usual noonday crowd at Wall, Broad and Nassau streets seemed greater, if anything, for New York is a city of the curious.

True, a few more guards could be seen, and the special prerogative of Santa Claus to secrecy was violated as suspicious looking Christmas packages were searched.

William J. Burns, chief of the bureau of investigation of the department of justice, was still here, awaiting cabled reports from Warsaw, concerning the arrest of Wolfe. Lindenfeld, alleged acquaintance of Lenine, in connection with the 1920 explosion. He professed himself mystified at the non-arrival of any such reports. Members of the interest Associated Press dispatchers, volunteering the comment that the correspondent was getting "good information."

LEGION WILL CARRY CHRISTMAS CHEER TO DISABLED VETERANS

(By The Associated Press.)
Indianapolis, Dec. 19.—Disabled veterans and their dependents in every community in the United States will be cared for Christmas day by American legion members. The legion has announced today by national headquarters of the ex-service men's organization.

Visits to the homes of sick and wounded ex-soldiers, men and to their families will be made by the legionnaires and special committees will take care of the men still in hospitals. Entertainment and presents will be provided for the incapacitated veterans.

In connection with the Christmas visits, legion investigators will obtain information in regard to striking cases of neglect of the disabled and their families, following which action the members of the local posts will take up the claims of these men with the government and will assist their families in getting proper care.

Information in regard to the location of disabled men will be ascertained through legion post meetings, the Red Cross, local medical organizations, county and city officials, and, if necessary, through house-to-house work by legion committees.

It is not a charity affair, said Harford MacNider, national commander of the legion. "It is the Christmas thought of one ex-soldier man for another who would expect his buddies to remember him if the positions were reversed. It does not matter whether the disabled lad is a legion man or not; it is a Christmas greeting between ex-service men."

Among the people of the Balkans it is believed that to die on Christmas day is of ill omen as regards one's place in the after-death life.

YOU CAN'T TRUST CALOMEL AT ALL

It's Quicksilver, Salivates, causes Rheumatism and Bone Decay

The next dose of calomel you take may salivate you. It may shock your liver or start bone necrosis. Calomel is dangerous. It is mercury, quicksilver. It crashes into your bile like dynamite, cramping and sickening you. Calomel attacks the bones and should never be put into your system.

If you feel bilious, headachy, constipated and all knocked out, just go to your druggist and get a bottle of Dodson's Liver Tonic for a few cents which is a harmless vegetable substitute for dangerous calomel. Take a spoonful and if it doesn't start your liver and straighten you up better and quicker than nasty calomel and without making you sick, you just go back and get your liver.

Don't take calomel! It can't be trusted any more than a leopard or a wild-cat. Take Dodson's Liver Tonic which straightens you right up and makes you feel fine. No salts necessary. Give it to the children because it is perfectly harmless and it can't salivate.

Beauty Contented
You are always confident that your beauty has been developed to the highest of its possibilities, after using Gouraud's Oriental Cream.
Send 15c for Trial Size
Ferd. T. Hupkins & Son
New York

Gouraud's Oriental Cream
Santal Midy
Each Capsule Midy
Be sure of counterfeits

CATARRH OF THE BLADDER
Santal Midy
Be sure of counterfeits

MINOR AND MAJOR LEAGUE PILOTS TALK SHOP AT MAGNATES' MEETING

Scores of men rightfully listed in baseball's Who's Who are attending the meeting of the major leagues in New York. Jack Miller, one time first baseman of the Phillies, is now managing the San Francisco Pacific Coast league team. George Gibson, former big league catching star, is coaching the Pirates now. William J. Clynner, former big league player, is now piloting the Newark team.



Jack Miller, standing; George Gibson, sitting at left, and Bill Clynner, snapped during a conference at the big pow-wow.

Theaters Today

"B" Theater—Thomas Meighan is starring in "Cappy Ricks," with Agnes Ayres. It is a Paramount picture and a good one. Also, "The Fox News" and "Mutt and Jeff" cartoons.

Pastime Theater—William Fox presents Barbara Bedford, a new film star, in "Cinderella of the Hills," also showing the latest "Fox News" and "Mutt and Jeff" cartoons.

Agnes Ayres, Paramount's newest star, will have cause to remember her last appearance as a leading woman in a Paramount picture. She was elevated to stardom by Paramount while working as leading woman with Thomas Meighan in "Cappy Ricks," a compilation of Peter H. Kyne's breezy stories of the sea, which will be shown at the "B" theater for three days, beginning today.

The company directed by Tom Foxman spent some time on the Maine coast off which the wreck scenes were made. After returning from the locations Miss Ayres received instructions to report in Hollywood to begin her first picture as a star.

The "Cappy Ricks" company worked day and night for a week, with only a few hours between scenes, to complete the episodes in which Miss Ayres appears. The part of Florrie Ricks, heroine of the Kyne story, supplies Miss Ayres with one of her best screen characterizations. The support generally is excellent.

"CINDERELLA OF THE HILLS" IS TITLE OF FINE PICTURE AT PASTIME

"Cinderella of the Hills," a Fox production presenting Barbara Bedford as a new star, is scheduled to come to the Pastime theater today, for a run of a few days. The picture is said to be one that will baffle the movie "Sherlocks" who can usually guess the identity of the mysterious stranger or the unknown murderer in screen stories.

The mysterious person in the play is a fiddler, and not until the very last reel is the audience let in on the secret of identity. There are several other puzzling situations that help complete the plot and make it a thoroughly enjoyable and clever one.

Howard M. Mitchell directed the picture from Dorothy Yost's screen version of the story. "The Little Fiddler of the Ozarks," by John Breckenridge Ellis.

WILL ROGERS IS HERE AT THE PASTIME THEATER IN "A POOR RELATION"

Those who have seen or have heard of Edward E. Kidder's famous comedy, "A Poor Relation," will be delighted to know that this successful play has been made into a photoplay by Goldwyn, with Will Rogers in the role made famous by the late Sol Russell. The picture will be presented at the Lyric theater for three days, starting today.

The part of the poor relation, Noah Vale, a town philosopher who fits the acting methods and the temperament of Will Rogers perfectly. It is one of the best roles that an actor of Mr. Rogers' type can hope for. Whoever has seen Will Rogers' Goldwyn pictures, will know that his Noah Vale in "A Poor Relation" is certain to be a masterly characterization.

In support of the star are such well known players as Sylvia Breamer, Molly Malone, Wallace MacDonald, Sydney Ainsworth, Liane Robert, George Williams, and Joannette Trebnal. Clarence Badger directed the picture.

EMPHASIZES NEED OF BETTER ROADS TO THE PARKS, MORE HOTELS

(By The Associated Press.)
Salt Lake City, Utah, Dec. 19.—Stephen T. Mather, director of national parks, in address before park officials, railroad passenger and others here today, emphasized the need of more hotels and better roads to the parks.

He said that he would prophesy that within a short time the national forests in Utah and Arizona would become famous as a resort.

Governor Charles R. Mabey welcomed the delegates to the meeting, which was called by Mr. Mather with a view to discussing plans for the accommodation of visitors at the national parks next year.

The belief in a Christmas demon is widely spread over continental Europe.

PECAN YIELD IN TEXAS IN 1921 SHOWS DECREASE

(By The Associated Press.)

Austin, Texas, Dec. 19.—Texas' pecan crop, which is said to furnish three-fourths of all the pecans grown in the world, is estimated at one-third of normal this year by O. L. Wallace, assistant to J. H. Burkett, pecan specialist of the state department of agriculture. Pecans are plentiful in southern Texas, particularly around Wharton, this year, Mr. Wallace said, but the crop was badly damaged by the frost in north Texas, especially around San Saba and Marshall. The damage by insect pests which destroy the young nuts was comparatively light, he said, although the insects caused considerable damage in the trees around Columbus.

The newly organized Texas Pecan Growers' exchange, of which Mr. Burkett is secretary, has shipped about four cars of pecans, or about 120,000 pounds, to market thus far. Mr. Wallace said, and is preparing for a better season next year.

All pecans shipped by the exchange are graded, according to Mr. Wallace. The extra large nuts are placed in grade 1, called "Jumbos," and the others are placed in three succeeding grades. This was the first grading of pecans on a large scale, the exchange reported.

CASCARETS 10

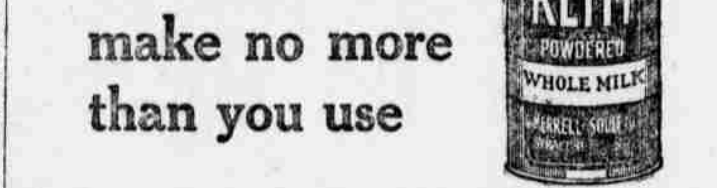
For Constipated Bowels, Sick Headache, Sour Stomach, Bilious Liver

The nicest cathartic-laxative in the world to physic your liver and bowels when you have Dizzy Headache, Colic, Biliousness, Indigestion, or Upset. Acid Stomach is candy-like "Cascarets." One or two tonight will empty your bowels completely by morning, and you will feel splendid. "They work while you sleep." Cascarets never stir you up or grip like salts, Pills, Calomel, or Oil and they cost only ten cents a box. Children love Cascarets too.



Spell it backwards
KLIM
FRESH MILK—POWDERED

No waste. You make no more than you use

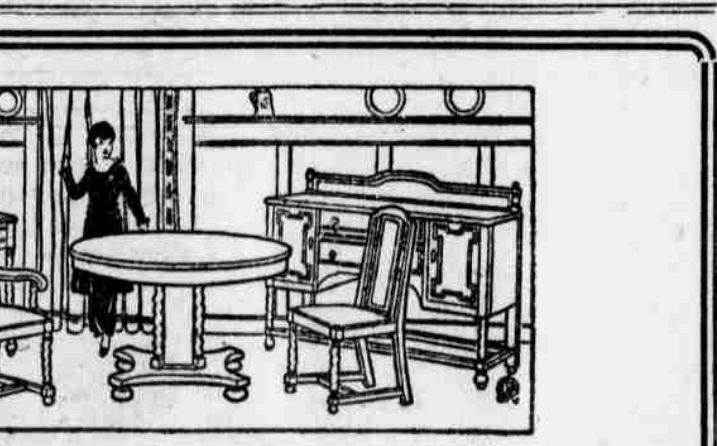


Had your iron today?

Eat more raisins

AN OIL WELL SHOOTER IS BLOWN TO PIECES

(By The Associated Press.)
Oil City, Pa., Dec. 19.—Charles Kirkwood, an oil well shooter, was blown to pieces, two other persons were seriously injured and two houses damaged by an explosion of nitroglycerin today. The explosion was discharged when Kirkwood's automobile dropped into a deep rut on a road near here.



FURNITURE---

Of all the Gifts you might choose, brings to every member of the family a greater measure of pleasure and service than any other.

When selected from our ample stock, it combines in the most attractive form both beauty and utility. Christmas is the ideal time to add a few pieces of furniture to the home. A spinet desk, table, telephone stand, lamp, rocker, fire side chair and many other items too numerous to mention are appropriate gifts that may be found in our store.

Make your selections early and we will put them in our Christmas bin and deliver your purchase on Christmas Eve.

GEO. C. SHEER FURNITURE CO.
QUALITY—SERVICE—PRICE
314-316 S. Second—I. O. O. F Building—Phone 431.

TUBERCULOSIS HEALED

Dr. Baile has absolute proof that tuberculosis can be healed in all climates by THE INHALANT METHOD. Results are nation-wide. For further particulars address THE INHALANT METHOD CO., Suite 608 Union League Bldg., Key No. 12, Los Angeles, Calif.

FOR INDIGESTION AND CONSTIPATION

There may be people in this vicinity who are afflicted with indigestion and constipation, and if so, they will be interested in the experience of Mrs. H. C. Getty, Indiana, Pa. When visiting in Mt. Jewett, Pa., Mrs. Getty was advised to try Chamberlain's Tablets for indigestion and constipation, and says: "This medicine not only cured me, but toned up my whole system, so that my health has been better than for years, since taking it."

CHANGES IN VISIBLE SUPPLY U. S. GRAIN

(By The Associated Press.)
New York, Dec. 19.—The visible supply of American grain shows the following changes: Wheat, increased 193,000 bushels; corn, increased 2,308,000 bushels; oats, decreased 92,000 bushels; rye, decreased 27,000 bushels; barley, decreased 227,000 bushels.

REDUCTION IN FORCES

Mobile, Ala., Dec. 19.—A 75 per cent reduction in the forces of the repair shops of the Mobile and Ohio here will go into effect on Tuesday, it was announced here.

LEGAL NOTICE

BEFORE THE BOARD OF COUNTY COMMISSIONERS OF THE COUNTY OF BERNALILLO, STATE OF NEW MEXICO.

In the Matter of the Petition of Inhabitants and Residents of East Albuquerque.

This matter, coming on to be heard upon the petition of more than twenty-five residents of East Albuquerque situated within the County of Bernalillo, State of New Mexico, and appearing to the Board that the facts, matters and things stated in said petition are true, and that East Albuquerque is a platted township of an unincorporated town, and addition thereof having a population of not less than three hundred people situated immediately east and adjoining the east boundary line of the City of Albuquerque, and embracing all the lands and territory included within the limits of an extension of the north and south boundary lines of said city of Albuquerque east for a distance of about one and seven-tenths miles more or less and containing an area of about 900 acres and the limits thereof are plainly marked by posts at the corners of said platted and unincorporated East Albuquerque, as shown by the plat thereof attached to said petition as part thereof, and described as follows:

Beginning at the S. E. Cor. of Sec. 22 T. 10 N. R. 3 E. N. M. P. M. thence west along the south line of Sec. 22 and 21 to the east line of the Albuquerque Grant; thence north along the east line of said grant to the south line of Coal Avenue; thence east along the south line of Coal Avenue to the east line of Mulberry street; thence north along the east line of Mulberry street to the north line of East Marquette Avenue; thence east along the north line of East Marquette Avenue to the east line of the Albuquerque Grant; thence north along said grant line to the north line of Sec. 21; thence east along the north line of Sec. 21 and 22 to the N. E. Cor. of Sec. 22; thence south along the east line of Sec. 22 to the place of beginning.

And it further appearing to the Board that the said East Albuquerque contains streets and alleys, and the business and residential district thereof, and business and residential areas occupied and used by the inhabitants and residents thereof, and the plant, buildings and campus of the University of the State of New Mexico, and the reservoir of the water works of the city of Albuquerque and the County Club house and golf links and divers other houses, buildings, improvements and property which are subject to great and irreparable damage by animals running at large; and it further appearing to

the Board that it is the desire of the inhabitants and residents of said East Albuquerque that an order may be made and entered of record by this Board prohibiting the running at large of such animals within the limits of said East Albuquerque; and the Board being fully advised in the premises, doth grant said petition.

Wherefore, It is ordered by the Board of County Commissioners of the County of Bernalillo, State of New Mexico, that there shall be and is hereby prohibited the running at large of any cattle, horses, swine, sheep, goats, burros and other domestic animals within the limits of East Albuquerque, the unincorporated town above described and as shown by the plat thereof accompanying the said petition of the residents and inhabitants of the said East Albuquerque and filed herein.

And it is further ordered that this order be published once each week for four consecutive weeks in the Albuquerque Morning Journal and Albuquerque Herald, newspapers published in the city of Albuquerque, in the said County of Bernalillo, State of New Mexico, and that printed hand bills containing such order be posted by the clerk of this Board in at least three places in said East Albuquerque.

Done at a Special session of said Board of County Commissioners of the County of Bernalillo, State of New Mexico, this 4th day of December, 1921.

A. G. SIMMS, Chairman.
FRED CROLOTT, Clerk.

State of New Mexico, State Corporation Commission of New Mexico, Certificate of Comparison, United States of America, State of New Mexico, this 1st day of December, 1921.

It is Hereby Certified, that the annexed is a full, true and complete transcript of the Certificate of Incorporation of North End Water Company (No. 11232) with the endorsements thereon, as same appears on file and of record in the office of the State Corporation Commission.

In Testimony Whereof, the State Corporation Commission of the State of New Mexico has caused this certificate to be signed by its Chairman and the seal of said Commission, to be affixed at the City of Santa Fe on this 1st day of December, A. D. 1921.

HUGH H. WILLIAMS, Chairman.
A. L. MORRISON, Clerk.

ARTICLES OF INCORPORATION OF NORTH END WATER COMPANY

WE, W. C. Thaxton, Florence L. Thaxton, W. D. Carr, Scott Anderson and John F. Simms, all being citizens of the United States and of the State of New Mexico, and residents of Albuquerque, New Mexico, do hereby certify that we have this day associated ourselves together for the purpose of forming a corporation under the laws of the State of New Mexico, and in pursuance thereof we do further certify:

1. The name of the corporation shall be "North End Water Company."

2. The location of the principal office of said corporation in the State of New Mexico, shall be in Albuquerque, New Mexico, and the name of the agent in charge thereof and upon whom process against this corporation may be served, is W. C. Thaxton.

3. The purposes and objects for which said corporation is formed are to construct reservoirs, pumping plants, pipe lines, ditches, mains, wells and other sources of water supply to enlarge and repair the same, to operate a system of water supply for the purpose of furnishing water for irrigation, manufacturing, domestic and other public uses to the inhabitants of Bernalillo county, New Mexico, and to any municipality or the inhabitants thereof, in said county, and in general to do all and every such act or thing in pursuance of the general purpose of said corporation, as may not be inconsistent with the laws of the United States or the State of New Mexico. The beginning point of said water system shall be at some point either in the Albright-Moore addition to the city of Albuquerque, or upon the Anderson addition No. 2 to said city, and the terminus of the main line of pipe shall be at such point either within or without the corporate limits of the city of Albuquerque as the needs and demands of consumers shall make necessary; the general course of such pipe line, mains and laterals shall be such as shall be necessary to best reach common stock; the amount of the same shall be such as shall be necessary to reach and serve consumers in said county.

4. The amount of the total authorized capital stock of this corporation shall be Fifty Thousand Dollars (\$50,000.00), which shall be divided into five hundred shares (\$500 of the par value of One Hundred Dollars (\$100.00) per share, and all of said stock shall be common stock; the amount of the capital stock with which said corporation shall commence business shall be Three Thousand Dollars (\$3,000.00).

5. The names and postoffice addresses of the incorporators and the number of shares subscribed for by each, are as follows:
W. C. Thaxton, Albuquerque, N. M., 25 shares; \$2,500.00.
Florence L. Thaxton, Albuquerque, N. M., 1 share; \$100.00.
W. D. Carr, Albuquerque, N. M., 1 share; \$100.00.
Scott Anderson, Albuquerque, N. M., 1 share; \$100.00.
John F. Simms, Albuquerque, N. M., 1 share; \$100.00.
Total 29 shares; \$2,900.00.

6. The period limited for the duration of this corporation shall be fifty (50) years.

7. The affairs of this corporation shall be managed by a board of directors of three, to be named by the stockholders at any annual meeting, provided that W. C. Thaxton, Scott Anderson and John F. Simms shall be and hereby are named as the directors of this corporation who shall manage the business of said corporation for the first year.

8. The board of directors shall have power to make, alter and amend by-laws for the government of this corporation.

In Witness Whereof, the incorporators have hereunto set their hands and seals on this 23rd day of November, 1921.

W. C. THAXTON, (L.S.)
FLORENCE L. THAXTON, (L.S.)
W. D. CARR, (L.S.)
SCOTT ANDERSON, (L.S.)
JOHN F. SIMMS, (L.S.)
State of New Mexico, County of Bernalillo.

On this 23rd day of November, 1921, before me personally appeared W. C. Thaxton, Florence L. Thaxton, W. D. Carr, Scott Anderson and John F. Simms, to me known to be the persons described in and who executed the foregoing instrument, and acknowledged that they executed the same as their free act and deed.

Witness my hand and seal on this day and year first above written.
(Seal) JULIA JOHNSON,
Notary Public, Bernalillo County, State of New Mexico.

My commission expires April 15, 1925.

ENDORSED.
No. 11232, Cor. Rec'd. Vol. 7, Page 115. Certificate of Incorporation of North End Water Company. Filed in office of State Corporation Commission of New Mexico December 1, 1921, 11 a. m.

Compared: JCK to JJO, INDEXED.
State of New Mexico, County of Bernalillo, ss.
This instrument was filed for record on the 7th day of December, 1921, at 9:15 o'clock a. m. Recorded in Vol. "E" Misc. of Records of said county, Folio 153.
(Seal) FRED CROLOTT, Clerk and Recorder.
By S. CROLOTT, Deputy Clerk.
Compared: Estelle Garcia to Cordyla Whitlock.

Let The Journal Be Your Christmas Guide

DO YOUR "shopping" at home—your buying at the stores.

BUT—There are so many, many wants to fill this coming Christmas. "How can I do my 'shopping at home?'"

THERE'S Mother—dear, old Mother, her hair shows silver-gray where once 'twas golden—for her it must be the best Christmas ever—

AND Dad, too—poor Dad, who usually gets a smile and "Merry Christmas"—for him, a regular gift this year—

AND Baby Betsy—it's her first real Christmas, she's 'most two years old—let's make her little heart just jump with joy on Christmas morn—

AND Brother Harry—and Sister Sue—and Aunts and Uncles, too—and friends, perhaps a score.

GOOD gracious—there's so many gifts to make and so little time to look around.

I KNOW—Let's select from the "Christmas Gift Suggestions" columns of The Morning Journal. We can "shop" there and save hours and dollars.

- Gifts for the Children**
Bicycles
Blocks
Dolls
Kiddie Kars
Rattles
Rings
Wagons
- Gifts for the Home**
Bookcases
Cook Books
Pianos
Photographs
Silverware
Tea Wagons
Vacuum
Cleaners
- Gifts for Her**
Flowers
Furs
Handkerchiefs
Hosiery
Lingerie
Jewel Cases
Necklaces
- Gifts for Him**
Belt Buckles
Cigars
Cigarette Cases
Cans
Hair Brushes
Safety Razors
Tobacco Jars

BOILED CIDER—SWEET CIDER

Brookfield—Pure Pork Sausage.
Fruit cake, pound 45c. Can you afford to make it for that.
Mince meat, in bulk, in tins and glass.
Swansdown cake flour, regular and instant. Have it in the house.
Plum Pudding, Fig pudding.
Canned blueberries, fancy blackberries, extra red raspberries, extra strawberries.
Cranberries, beautiful, pound, 30c.
Shelled pecans, walnuts, almonds.
Buy HIM a box of good cigars. We have them in fancy small boxes.
Only four days more to prepare for two days.

WARD'S STORE
HOMER H. WARD
815 Marble Avenue
Phone 172-173-174

CRESCENT GROCERY
ROBERT JONES
Coal and South Walter
Phone 576

LET'S GO PASTIME TODAY

WILLIAM FOX Presents
BARBARA BEDFORD
A New and Brilliant Star in
"CINDERELLA OF THE HILLS"
A Romance of the Ozark Mountains
Also "FOX NEWS"—Events of the Day
"MUTT and JEFF" Cartoons
REGULAR ADMISSION PRICES

LOCAL ITEMS

Coal Supply Co. Phone 4 and 5.
Guadalupe S. Garcia, naval aviator stationed at Pensacola, Fla., arrived here yesterday to spend the holidays with his parents, Mr. and Mrs. Pedro C. Garcia, of Alameda, Ada Phillips—Phone 2418-32.
Albuquerque camp No. 1, W. O. W., will meet tonight at K. of P. hall, initiation.
Catholic Lady Foresters will meet tonight at 7:30 o'clock at St. Mary hall, refreshments.
Dr. Murray, Osteopath, P. 644-W. Mrs. Frank Butt has as her guest for the holidays, Mrs. H. H. Hawkins, of Sedalia, Missouri.
All members of the Fraternal Aid union, of Coronado lodge No. 907, are requested to meet at Crockett's funeral parlors this evening at 7:30 to take part in the funeral of brother Pedro Chavez, who died Monday evening.
Factory wood, fuel truck load, four dollars. Hahn Coal Company, Phone 21.
Thomas N. Wilkerson, attorney of this city, is seriously ill with pneumonia. He is at the Presbyterian sanatorium.
Miss Pauline Armijo, a teacher at the Ranchos de Atrisco school, was married yesterday to Eli Sanchez, of Atrisco. Miss Joy Miller will fill the position left vacant by Miss Armijo.
The DeMolay will meet in regular session tonight. Professor Zimer will deliver an address of interest. There will be election of officers and refreshments.
Rangers C. L. Warnock and George Beckwith of the Tileras station were in the city yesterday. Mr. Beckwith is taking his annual leave.

UNIVERSITY HEIGHTS DOINGS

A. D. Kinsman expects his new home on Cornell avenue to be completed this week so as to enable his family to move in as a Christmas present.
W. H. Orsot, pharmacist, yesterday purchased two choice lots on Cornell avenue, south of Coal.

CARD OF THANKS.
I wish to express my heartfelt appreciation and thanks to my many friends for their comforting words and deeds of kindness shown in the sickness and death of my beloved husband, Charles E. Austin; also for the beautiful flowers presented to him.
MRS. CHARLES E. AUSTIN.

The Different Grades of Goods

There is as much difference in groceries, vegetables and fruits as there is in automobiles. We carry three grades of goods: Common, medium and high; with corresponding differences in prices. We advise you to buy the better grades of goods as they are much better values at a small difference in price.

When price is the main consideration you will find that our prices on the common grade of goods are the lowest prices that can be made on goods that are fit to eat. Nothing is offered for sale in our store until after it has undergone the most rigid inspection as to grade, quality and value to the customer. This guarantees our customers good values.

You are invited to visit our store and ask the clerks to show you the different grades of goods and the different prices. Our clerks will be glad to show you the different grades and the different prices and give you information on any points that you may be interested in.

We sell for less and the goods must be good goods or the sale is no good.

WILLY-NILLY

J. A. SKINNER

205 S. First St.

Enjoy a Genuine Mexican Dish of
BARBECUE, ENCHILADAS, TAMALES AND CHILE CON CARNE
—at the—
Deliciosa Barbacoa
318 North First St.
Return this coupon and receive a 5 cent discount.

GUYS TRANSFER
Call
3 7 1

TURKEYS
Milk and Grain Fed.
Popular Dairy Farm.
Phone 2410-R5

CURIOS NAVAJO RUGS
Moccasins, Baskets,
Jewelry, Gems, Laces.
WRIGHT'S Trading Post.
Indian Building
Opposite Postoffice.

158—Taxi & Baggage—158

Call "6 7 8"
AND WATCH US MOVE
(Moving is our business). Expert piano movers. We satisfy particular people.
BROWN'S TRANSFER AND STORAGE

J. W. BRASFIELD
Watch, clock and jewelry repaired.
American, Swiss and English makes.
117 S. First Phone 917-J

FOGG, The Jeweler
Up-to-the-Minute Jewelry
Just out of the high rent district.
Opposite Postoffice.
Phone 903-J. 122 S. Fourth

NOTICE TO TAXPAYERS
Taxes for 1921 will be payable January 1. Delinquent February 1. Five per cent penalty added 15 days after delinquent.
E. B. SWOPE,
Treasurer and Collector.

ELMSHOTEL
300 1/2 North First.
Finest rooms in the state—steam heat, hot and cold water—all outside rooms.
Weekly rates, with or without private bath, \$4 to \$10 week.
Transient rate \$1.50 single; \$2.00 double.
With bath \$2.50 single and double \$3.00.

WANTED
Motors to Clean By New Process—Guaranteed Repairs on all cars. We call for and deliver cars, day or night.
List Your Cars With Us for Sale.
Mann Garage,
213 West Copper.

STAGE Albuquerque to Santa Fe.
Leaves Albuquerque... 7:45 am
Arrives in Santa Fe... 10:45 am
Leaves Santa Fe... 4:00 pm
Arrives in Albuquerque 7:30 pm
Phone 600
SINGER TAXI
Office Singer Cigar Store,
210 West Central

FOR SALE BY OWNER
These homes are all Las Vegas Press Brick and built by owner.
6-Room modern, Ninth and Gold.
6-Room modern on North Maple, half block from Central.
4-Room, one block from Central.
4-Room modern, two blocks from Central.
Can Make Good Terms.
If you are intending to buy investigate these first.
821 West Silver, Phone 1949-M

DAILY'S KASH AND KARRY
206 East Central Ave.
Kansas City Meat
Free Meat delivery. \$3 Grocery orders delivered to Highlands.
\$1,000 WORTH OF CANDY
Please give us the bulk of your orders before Saturday, as delivery at Cash and Carry prices will make it impossible to give service Friday and Saturday.
EXTRA SPECIAL PRICES
For Churches, Schools and Sunday Schools on Candy, Oranges, Apples, Nuts, Etc.

A REGULAR CHRISTMAS PRESENT

Give it to yourself an

Exide Battery

That will end your car troubles, so far as batteries are concerned.

Arno Huning
Electric Company
General Distributors

LADIES' RUBBER HEELS, 40c. Men's 45c.
No cheap work. We use only the best material and skilled workmanship and the prices are low—but we never allow that cheap look to attach itself. We call for them and bring 'em back.
Rightway Shoe Shop
218 South Second, Phone 127.

OUR JEWELRY
Is the highest quality obtainable for the price and fully guaranteed.
WISEMAN'S WATCH SHOP
218 S. Second St.

HOT Chicken Tamales TODAY
Ready for delivery at 11 a. m. Made by Albuquerque Crisp Potato Chip Company.
Phone 1536-J.

Let Us Send a Man
To replace that broken window glass. Albuquerque Lumber Co.
Phone 421. 423 North First

AT LAST—
Our New Shipment
Of the Celebrated
"GRUEN" WRIST
WATCHES

Don't waste money on watches of unknown quality when you can buy "Gruens" at \$25, \$250 and up (ask those who have one) Gentlemen's "Gruens" \$25 up to \$200

Everitt THE DIAMOND HOUSE
RELIABLE WATCHMAKERS & JEWELERS
205 W. CENTRAL AVE.
ALBUQUERQUE, N. M.

Beautiful "Picard" Gold Ware

Eversharps

\$1.00 to \$35.00

Fountain Pens

\$2.50 to \$35.00

Silver Pieces of Every Description

Diamond and Platinum

Prices to suit all

Add-A-Pearls

Dainty and genuine

Heirloom Silver

lasts a life time

GUARANTEED COAL

GALLUP EGG—For the Range and Heater. SWASTIKA LUMP—For the Furnace.

\$11.50 Per Ton

Order Today—You may win the Christmas Coal

NEW STATE COAL CO.

PHONE 35

Your Xmas Greeting

"SAY IT" with the F. S. S. Sunshine Package.

PINON NUTS

Machine-Shell Machine-Separated

They "Just Roll Out" of my machines

SHELLED—CLEAN

—WHOLESALE—

SWEET—DELICIOUS

Mail Orders Given Careful Attention.

Send for price list order sheet

FANNIE S. SPITZ

323 N. Tenth St.

Inventor and Proprietor of the F. S. S. Sunshine Nut-Shell and Separating Machine. Tel. 802

Sold exclusively from and at my factory



NEW MEXICO SHELLED PINON NUTS
MACHINE SHELLED—MACHINE SEPARATED
FANNIE S. SPITZ
323 N. TENTH STREET
ALBUQUERQUE, NEW MEXICO

Copyright, 1921, by Fannie S. Spitz.

CERRILLOS EGG COAL

Price, \$11.25 Per Ton

Least Expensive Burns Longer

Produces More Heat

Nicest Cedar Kindling, Stove and Fireplace Wood,

Real Gallup Lump Coal

HAHN COAL CO.

PHONE 91.

CARVERS ON SALE

DISCOUNT 25 PER CENT FOR CHRISTMAS GIFTS

WHITNEY HARDWARE CO.**COAL**

The very best quality, full of heat and satisfaction.

GALLUP—DAWSON—CANON CITY.

COAL SUPPLY AND LUMBER CO.

4—PHONES—5

Let Our Up-to-the-Minute Trucks Bring Comfort to Your Home.

SPECIAL OFFER THIS

WEEK ONLY

Rugs for Christmas

PRESENTS

Tapestry Rugs, 9x12, assorted patterns; regular price \$29.50.

Christmas Special..... \$19.75

Regular price \$35.00.

Christmas Special..... \$24.75

Seamless Axminster, 9x12, assorted patterns; regular price \$49.00.

Christmas Special..... \$34.75

French Wilton, assorted patterns, 9x12; regular price \$95.00.

Christmas Special..... \$69.50

Big assortment of Small Rugs, 27x54. Christmas Special..... \$3.85

LIVINGSTON FURNITURE CO.215 West Gold Avenue
Albuquerque, N. M.

TELL IT THROUGH THE CLASSIFIED

B THEATRE

Three Days Starting Today

HIGHEST CLASS IN EVERY WAY

**THOMAS MEIGHAN****"CAPPY" RICKS**

CAST INCLUDES AGNES AYRES

A tale of the sea and the world of ships. And a man who could face a storm, a fight or a glorious love—and see it through!
All hands on deck for a picture freighted with thrills and happiness!

ADDED ATTRACTIONS

"HOLMES TRAVELOUGE"

AND

"CURRENT EVENTS"

REGULAR PRICES

LYRIC THEATER

CONTINUOUS—1 TO 11 P. M.

THREE DAYS STARTING TODAY

GOLDWYN presents**WILL ROGERS in A POOR RELATION**

by EDWARD E. KIDDER directed by CLARENCE BADGER

A GOLDWYN PICTURE

ADDED ATTRACTION

"WILD AND WILLIE"

A GAYETY Comedy

REGULAR PRICES

25 Cent Taxi

Prompt Day and Night Service

Phone 17

Open and Closed Cars.

JOHNSON COAL CO.

Coal and Wood.

Gallup Lump \$11.50 a Ton

900 NORTH FIRST STREET

Phone 388-W.

Auction Sale

TUESDAY, DEC. 20, AT 332 NORTH THIRD ST. SALE STARTS PROMPTLY AT 2:30 P. M.

Five rooms of furniture to go to the highest bidder. Note the following articles to be sold:

Dresser, chiffonier, beds, springs and mattresses; Wilton velvet rug, extra large; Body Brussels rug, extra large; rockers, dining table, heaters, oil cook stove, side board, kitchen cabinet, library table, bookcase, commodes, drop head sewing machine, kitchen safe and many other articles not mentioned that are useful. Don't miss this opportunity to buy furniture at your own price. Be on hand promptly.

If anyone has odd pieces of furniture they want to put in this sale, call Guber by Monday night.

J. L. GOBER, Auctioneer.