

University of New Mexico

UNM Digital Repository

Mathematics and Statistics Faculty and Staff
Publications

Academic Department Resources

4-2012

Parameterized Special Theory of Relativity (PSTR)

Florentin Smarandache

Follow this and additional works at: https://digitalrepository.unm.edu/math_fsp



Part of the [Mathematics Commons](#), [Other Physical Sciences and Mathematics Commons](#), and the [Other Physics Commons](#)

Parameterized Special Theory of Relativity (PSTR)

Florentin Smarandache

University of New Mexico, Gallup, NM 87301, USA

E-mail: smarand@unm.edu

We have parameterized Einstein's thought experiment with atomic clocks, supposing that we knew neither if the space and time are relative or absolute, nor if the speed of light was ultimate speed or not. We have obtained a Parameterized Special Theory of Relativity (PSTR), first introduced in 1982. Our PSTR generalized not only Einstein's Special Theory of Relativity, but also our Absolute Theory of Relativity, and introduced three more possible Relativities to be studied in the future. After the 2011 CERN's superluminal neutrino experiments, we recall our ideas and invite researchers to deepen the study of PSTR, ATR, and check the three new mathematically emerged Relativities 4.3, 4.4, and 4.5.

1 Einstein's thought experiment with the light clocks

There are two identical clocks, one is placed aboard of a rocket, which travels at a constant speed v with respect to the Earth, and the second one is on the Earth. In the rocket, a light pulse is emitted by a source from A to a mirror B that reflects it back to A where it is detected. The rocket's movement and the light pulse's movement are orthogonal. There is an observer in the rocket (the astronaut) and an observer on the Earth. The trajectory of light pulse (and implicitly the distance traveled by the light pulse), the elapsed time it needs to travel this distance, and the speed of the light pulse at which is travels are perceived differently by the two observers (depending on the theories used — see below in this paper).

According to the astronaut (see Fig. 1):

$$\Delta t' = \frac{2d}{c}, \tag{1}$$

where $\Delta t'$ time interval, as measured by the astronaut, for the light to follow the path of double distance $2d$, while c is the speed of light.

According to the observer on the Earth (see Fig. 2):

$$\left. \begin{aligned} 2l &= v \Delta t, & s &= |AB| = |BA'| \\ d &= |BB'|, & l &= |AB'| = |b'A'| \end{aligned} \right\}, \tag{2}$$

where Δt is the time interval as measured by the observer on the Earth. And using the Pythagoras' Theorem in the right triangle $\Delta ABB'$, one has

$$2s = 2 \sqrt{d^2 + l^2} = 2 \sqrt{d^2 + \left(\frac{v \Delta t}{2}\right)^2}, \tag{3}$$

but $2s = c \Delta t$, whence

$$c \Delta t = 2 \sqrt{d^2 + \left(\frac{v \Delta t}{2}\right)^2}. \tag{4}$$

Squaring and computing for Δt one gets:

$$\Delta t = \frac{2d}{c} \frac{1}{\sqrt{1 - \frac{v^2}{c^2}}}. \tag{5} \text{ or}$$

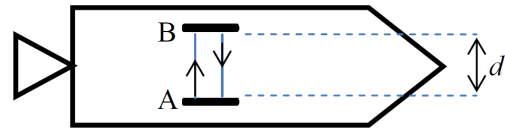


Figure 1

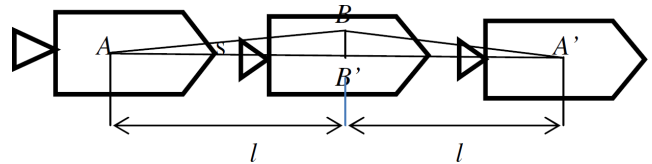


Figure 2

Whence Einstein gets the following time dilation:

$$\Delta t = \frac{\Delta t'}{\sqrt{1 - \frac{v^2}{c^2}}}. \tag{6}$$

where $\Delta t > \Delta t'$

2 Parameterized Special Theory of Relativity (PSTR)

In a more general case when we don't know the speed x of the light as seen by the observer on Earth, nor the relationship between $\Delta t'$ and Δt , we get:

$$x \Delta t = 2 \sqrt{d^2 + \left(\frac{v \Delta t}{2}\right)^2}. \tag{7}$$

But $d = \frac{c \Delta t'}{2}$, therefore:

$$x \Delta t = 2 \sqrt{\left(\frac{c \Delta t'}{2}\right)^2 + \left(\frac{v \Delta t}{2}\right)^2}, \tag{8}$$

$$x \Delta t = \sqrt{c^2(\Delta t')^2 + v^2(\Delta t)^2}. \tag{9}$$

Dividing the whole equality by Δt we obtain:

$$x = \sqrt{v^2 + c^2 \left(\frac{\Delta t'}{\Delta t} \right)^2}. \quad (10)$$

which is the *PSTR Equation*.

3 PSTR elapsed time ratio τ (parameter)

We now substitute in a general case

$$\frac{\Delta t'}{\Delta t} = \tau \in (0, +\infty), \quad (11)$$

where τ is the PSTR elapsed time ratio. Therefore we split the Special Theory of Relativity (STR) in the below ways.

4 PSTR extends STR, ATR, and introduces three more Relativities

4.1 If $\tau = \sqrt{1 - \frac{v^2}{c^2}}$ we get the STR (see [1]), since replacing x by c , one has

$$c^2 = v^2 + c^2 \left(\frac{\Delta t'}{\Delta t} \right)^2, \quad (12)$$

$$\frac{c^2}{c^2} - \frac{v^2}{c^2} = \left(\frac{\Delta t'}{\Delta t} \right)^2, \quad (13)$$

or $\frac{\Delta t'}{\Delta t} = \sqrt{1 - \frac{v^2}{c^2}} \in [0, 1]$ as in the STR.

4.2 If $\tau = 1$, we get our *Absolute Theory of Relativity* (see [2]) in the particular case when the two trajectory vectors are perpendicular, i.e.

$$X = \sqrt{v^2 + c^2} = |\vec{v} + \vec{c}|. \quad (14)$$

4.3 If $0 < \tau < \sqrt{1 - \frac{v^2}{c^2}}$, the time dilation is increased with respect to that of the STR, therefore the speed x as seen by the observer on the Earth is decreased (becomes subluminal) while in STR it is c .

4.4 If $\sqrt{1 - \frac{v^2}{c^2}} < \tau < 0$, there is still time dilation, but less than STR's time dilation, yet the speed x as seen by the observer on the Earth becomes superluminal (yet less than in our Absolute Theory of Relativity). About superluminal velocities see [3] and [4].

4.5 If $\tau > 1$, we get an *opposite time dilation* (i.e. $\Delta t' > \Delta t$) with respect to the STR (instead of $\Delta t' < \Delta t$), and the speed x as seen by the observer on earth increases even more than in our ATR.

5 Further research

The reader might be interested in studying these new Relativities mathematically resulted from the above 4.3, 4.4, and 4.5 cases.

Submitted on February 6, 2012 / Accepted on February 12, 2012

References

1. Einstein A. Zur Elektrodynamik bewegter Körper. *Annalen der Physik*, 1905, v. 17, 891–921.
2. Smarandache F. *Absolute Theory of Relativity and Parameterized Special Theory of Relativity and Noninertial Multirelativity*. Somipress, 1982, 92 p.
3. Smarandache F. There is No Speed Barrier in the Universe. Liceul Pedagogic Rm. Vâlcea, Physics Prof. Elena Albu, 1972.
4. Rabounski D. A blind pilot: who is a super-luminal observer? *Progress in Physics*, 2008, v. 2, 171.