

1-1-2018

## Correlation Coefficient Measures of Interval Bipolar Neutrosophic Sets for Solving Multi-Attribute Decision Making Problems

Surapati Pramanik

Partha Pratim Dey

Florentin Smarandache

Follow this and additional works at: [https://digitalrepository.unm.edu/nss\\_journal](https://digitalrepository.unm.edu/nss_journal)

---

### Recommended Citation

Pramanik, Surapati; Partha Pratim Dey; and Florentin Smarandache. "Correlation Coefficient Measures of Interval Bipolar Neutrosophic Sets for Solving Multi-Attribute Decision Making Problems." *Neutrosophic Sets and Systems* 19, 1 (2019). [https://digitalrepository.unm.edu/nss\\_journal/vol19/iss1/10](https://digitalrepository.unm.edu/nss_journal/vol19/iss1/10)

This Article is brought to you for free and open access by UNM Digital Repository. It has been accepted for inclusion in *Neutrosophic Sets and Systems* by an authorized editor of UNM Digital Repository. For more information, please contact [amywinter@unm.edu](mailto:amywinter@unm.edu).



# Correlation Coefficient Measures of Interval Bipolar Neutrosophic Sets for Solving Multi-Attribute Decision Making Problems

Surapati Pramanik<sup>1</sup>, Partha Pratim Dey<sup>2</sup> and Florentin Smarandache<sup>3</sup>

<sup>1</sup> Department of Mathematics, Nandalal Ghosh B.T. College, Panpur, P.O. - Narayanpur, District –North 24 Parganas, Pin Code-743126, West Bengal, India. E-mail: sura\_pati@yahoo.co.in

<sup>2</sup> Department of Mathematics, Patipukur Pallisree Vidyapith, Patipukur, Kolkata-700048, West Bengal, India. E-mail: parsur.fuzz@gmail.com

<sup>3</sup> Department of Mathematics, University of New Mexico, 705 Gurley Avenue, Gallup, NM 87301, USA. E-mail: smarand@unm.edu

\*Corresponding author's E-mail: sura\_pati@yahoo.co.in

**Abstract.** Interval bipolar neutrosophic set is a significant extension of interval neutrosophic set where every element of the set comprises of three independent positive membership functions and three independent negative membership functions. In this study, we first define correlation coefficient, and weighted correlation coefficient measures of interval bipolar neutrosophic sets and

prove their basic properties. Then, we develop a new multi-attribute decision making strategy based on the proposed weighted correlation coefficient measure. Finally, we solve an investment problem with interval bipolar neutrosophic information and comparison is given to demonstrate the applicability and effectiveness of the proposed strategy.

**Keywords:** Interval bipolar neutrosophic set, multi-attribute decision making, correlation coefficient measure.

## 1 Introduction

Correlation coefficient is an important decision making apparatus in statistics to evaluate the relation between two sets. In neutrosophic environment [1], Hanafy et al. [2] derived a formula for correlation coefficient between two neutrosophic sets (NSs). Hanafy et al. [3] obtained the correlation coefficient of NSs by using centroid strategy which lies in  $[-1, 1]$ . The correlation coefficient obtained from [3] provides the information about the degree of the relationship between two NSs and also informs us whether the NSs are positive or negatively related. In 2013, Ye [4] defined correlation, correlation coefficient, weighted correlation coefficient in single valued neutrosophic set (SVNS) [5] environment and established a multi-criteria decision making (MCDM) based on the proposed weighted correlation coefficient measure. Broumi and Smarandache [6] introduced the concept of correlation coefficient and weighted correlation coefficient between two interval neutrosophic sets (INSs) [7] and established some of their basic properties. Hanafy et al. [8] studied the notion of correlation and correlation coefficient of neutrosophic data under probability spaces. Ye [9] suggested an improved correlation coefficient between two SVNSs in order to overcome the drawbacks of the correlation coefficient discussed in [4] and investigated its properties. In the same

study, Ye [9] extended the concept of correlation coefficient measure of SVNS to correlation coefficient measure of INS environment. Furthermore, Ye [9] developed strategies for solving multi-attribute decision making (MADM) problems with single valued neutrosophic and interval neutrosophic environments based on the proposed correlation coefficient measures. Broumi and Deli [10] defined correlation measure of two neutrosophic refined (multi) sets [11] by extending the correlation measure of two intuitionistic fuzzy multi-sets proposed by Rajarajeswari and Uma [12] and proved some of its basis properties. Zhang et al. [13] defined an improved weighted correlation coefficient on the basis of integrated weight for INSs and a decision making strategy is developed. Karaaslan [14] proposed a strategy to compute correlation coefficient between possibility neutrosophic soft sets and presented several properties related to the proposed strategy. Karaaslan [15] defined a new mathematical structure called single-valued neutrosophic refined soft sets (SNRSSs) and presented its set theoretical operations such as union, intersection and complement and proved some of their basic properties. In the same study [15], two formulas to determine correlation coefficient between two SNRSSs are proposed and the developed strategy is used to solve a clustering analysis problem. Şahin and Liu [16] defined single valued

neutrosophic hesitant fuzzy sets (SVNHFSs) and established some basic properties and finally proposed a decision making strategy. Liu and Luo [17] defined correlation coefficient and weighted correlation coefficient for interval-valued neutrosophic hesitant fuzzy sets (INHFSSs) due to Liu and Shi [18] and studied their properties. Then, Liu and Luo [17] developed a MADM strategy within the framework of INHFSSs based on weighted correlation coefficient. Ye [19] suggested a dynamic single valued neutrosophic multiset (DSVNM) based on dynamic information obtained from different time intervals in several practical situations in order to express dynamical data and operational relations of DSVNMs. In the same study [19], correlation coefficient and weighted correlation coefficient measures between DSVNMs are proposed and a MADM strategy is developed on the basis of the proposed weighted correlation coefficient under DSVNM setting. Recently, Ye [20] proposed two correlation coefficient between normal neutrosophic sets (NNSs) based on the score functions of normal neutrosophic numbers and investigated their essential properties. In the same study, Ye [20] formulated a MADM strategy by employing correlation coefficient of NNSs in normal neutrosophic environment. Pramanik et al. [21] defined correlation coefficient and weighted correlation coefficient between two rough neutrosophic sets and proved their basic properties. In the same study, Pramanik et al. [21] developed a multi-criteria decision making strategy based on the proposed correlation coefficient measure and solved an illustrative example in medical diagnosis.

In 2015, Deli et al. [22] introduced a novel concept called bipolar neutrosophic sets (BNSs) by generalizing the concepts of bipolar fuzzy sets [23, 24] and bipolar intuitionistic fuzzy sets [25]. In the same study, Deli et al. [22] defined score, accuracy and certainty functions to compare BNSs and formulated a MCDM approach based on the score, accuracy and certainty functions and bipolar neutrosophic weighted average operator ( $A_w$ ) and bipolar neutrosophic weighted geometric operator ( $G_w$ ). In bipolar neutrosophic environment, Dey et al. [26] developed a MADM approach based on technique for order of preference by similarity to ideal solution (TOPSIS) strategy. Deli and Subas [27] and Şahin et al. [28] developed MCDM strategies based on correlation coefficient and Jaccard similarity measures, respectively in BNS environment. Uluçay et al. [29] defined Dice, weighted Dice similarity measures, hybrid and weighted hybrid similarity measures for

MCDM problems with bipolar neutrosophic information. Pramanik et al. [30] defined projection, bidirectional projection and hybrid projection measures between BNSs and proved their basic properties and then, three new MADM models are developed based on proposed measures.

Mahmood et al. [31] and Deli et al. [32] incorporated the notion of interval bipolar neutrosophic sets (IBNSs) and defined some operations and operators for IBNSs. Recently, Pramanik et al. [33] defined new cross entropy and weighted cross entropy measures in BNS and IBNS environment and discussed some of their essential properties. In the same study, Pramanik et al. [33] developed two novel MADM strategies on the basis of the proposed weighted cross entropy measures.

#### Research gap:

MADM strategy based on correlation coefficient under IBNSs environment.

#### This paper answers the following research questions:

- i. Is it possible to introduce a novel correlation coefficient measure for IBNSs?
- ii. Is it possible to introduce a novel weighted correlation coefficient measure for IBNSs?
- iii. Is it feasible to formulate a novel MADM strategy based on the proposed correlation coefficient measure in IBNS environment?
- iv. Is it feasible to formulate a novel MADM strategy based on the proposed weighted correlation coefficient measure in IBNS environment?

#### Motivation:

The aforementioned analysis presents the motivation behind developing correlation coefficient -based strategy for handling MADM problems with IBNS information.

The objectives of the paper are as follows:

1. To define a new correlation coefficient measure and a new weighted correlation coefficient measure in IBNS environment and prove their basic properties.
2. To develop a new MADM strategy based on weighted correlation coefficient measure in IBNS environment.

In order to fill the research gap, we propose correlation coefficient-based MADM strategy in IBNS environment.

Rest of the article is organized as follows. Section 2 provides the preliminaries of bipolar fuzzy sets, bipolar intuitionistic fuzzy sets, BNSs and IBNSs. Section 3 defines the correlation coefficient and weighted correlation coefficient measures in IBNS environment and establishes their basic properties. In section 4, a new MADM strategy based on the proposed weighted correlation coefficient measure is developed. In section 5, we solve a numerical example and comparison analysis is given. Finally, in the last section, conclusions are presented.

## 2 Preliminaries

### 2.1 Bipolar fuzzy sets

A bipolar fuzzy set [23, 24]  $B$  in  $X$  is characterized by a positive membership function  $\alpha_B^+(x)$  and a negative membership function  $\alpha_B^-(x)$ . A bipolar fuzzy set  $B$  is expressed in the following way.

$$B = \{x, \langle \alpha_B^+(x), \alpha_B^-(x) \rangle \mid x \in X\}$$

where  $\alpha_B^+(x): X \rightarrow [0, 1]$  and  $\alpha_B^-(x): X \rightarrow [-1, 0]$  for each point  $x \in X$ .

### 2.2 Bipolar intuitionistic fuzzy sets

Consider  $X$  be a non-empty set, then a BIFS [25]  $E$  is expressed in the following way.

$$E = \{x, \langle \alpha_E^+(x), \alpha_E^-(x), \beta_E^+(x), \beta_E^-(x) \rangle \mid x \in X\}$$

where  $\alpha_E^+(x), \beta_E^+(x): X \rightarrow [0, 1]$  and  $\alpha_E^-(x), \beta_E^-(x): X \rightarrow [-1, 0]$  for each point  $x \in X$  such that  $0 \leq \alpha_E^+(x) + \beta_E^+(x) \leq 1$  and  $-1 \leq \alpha_E^-(x) + \beta_E^-(x) \leq 0$ .

### 2.3 Bipolar neutrosophic sets

A BNS [22]  $M$  in  $X$  is presented as follows:

$$M = \{x, \langle \alpha_M^+(x), \beta_M^+(x), \gamma_M^+(x), \alpha_M^-(x), \beta_M^-(x), \gamma_M^-(x) \rangle \mid x \in X\}$$

where  $\alpha_M^+(x), \beta_M^+(x), \gamma_M^+(x): X \rightarrow [0, 1]$  and  $\alpha_M^-(x), \beta_M^-(x), \gamma_M^-(x): X \rightarrow [-1, 0]$ . The positive membership degrees  $\alpha_M^+(x), \beta_M^+(x), \gamma_M^+(x)$  denote the truth membership, indeterminate membership, and false membership functions of an object  $x \in X$  corresponding to a BNS  $M$  and the negative membership degrees  $\alpha_M^-(x), \beta_M^-(x), \gamma_M^-(x)$  denote the truth membership, indeterminate membership, and false membership of an object  $x \in X$  to several implicit counter property associated with a BNS  $M$ .

#### Definition 2.3.1

Let,  $M_1 = \{x, \langle \alpha_{M_1}^+(x), \beta_{M_1}^+(x), \gamma_{M_1}^+(x), \alpha_{M_1}^-(x), \beta_{M_1}^-(x), \gamma_{M_1}^-(x) \rangle \mid x \in X\}$  and  $M_2 = \{x, \langle \alpha_{M_2}^+(x), \beta_{M_2}^+(x), \gamma_{M_2}^+(x), \alpha_{M_2}^-(x), \beta_{M_2}^-(x), \gamma_{M_2}^-(x) \rangle \mid x \in X\}$  be any two BNSs. Then, a BNS  $M_1$  is contained in another BNS  $M_2$ , represented by  $M_1 \subseteq M_2$  if and only if  $\alpha_{M_1}^+(x) \leq \alpha_{M_2}^+(x), \beta_{M_1}^+(x) \geq \beta_{M_2}^+(x), \gamma_{M_1}^+(x) \geq \gamma_{M_2}^+(x); \alpha_{M_1}^-(x) \geq \alpha_{M_2}^-(x), \beta_{M_1}^-(x) \leq \beta_{M_2}^-(x), \gamma_{M_1}^-(x) \leq \gamma_{M_2}^-(x)$  for all  $x \in X$ .

#### Definition 2.3.2

Let,  $M_1 = \{x, \langle \alpha_{M_1}^+(x), \beta_{M_1}^+(x), \gamma_{M_1}^+(x), \alpha_{M_1}^-(x), \beta_{M_1}^-(x), \gamma_{M_1}^-(x) \rangle \mid x \in X\}$  and  $M_2 = \{x, \langle \alpha_{M_2}^+(x), \beta_{M_2}^+(x), \gamma_{M_2}^+(x), \alpha_{M_2}^-(x), \beta_{M_2}^-(x), \gamma_{M_2}^-(x) \rangle \mid x \in X\}$  be any two BNSs [22], then  $M_1 = M_2$  if and only if  $\alpha_{M_1}^+(x) = \alpha_{M_2}^+(x), \beta_{M_1}^+(x) = \beta_{M_2}^+(x), \gamma_{M_1}^+(x) = \gamma_{M_2}^+(x), \alpha_{M_1}^-(x) = \alpha_{M_2}^-(x), \beta_{M_1}^-(x) = \beta_{M_2}^-(x), \gamma_{M_1}^-(x) = \gamma_{M_2}^-(x)$  for all  $x \in X$ .

#### Definition 2.3.3

The complement of a BNS [33]  $M$  is  $M^c = \{x, \langle \alpha_{M^c}^+(x), \beta_{M^c}^+(x), \gamma_{M^c}^+(x), \alpha_{M^c}^-(x), \beta_{M^c}^-(x), \gamma_{M^c}^-(x) \rangle \mid x \in X\}$  where  $\alpha_{M^c}^+(x) = \gamma_M^+(x), \beta_{M^c}^+(x) = 1 - \beta_M^+(x), \gamma_{M^c}^+(x) = \alpha_M^+(x); \alpha_{M^c}^-(x) = \gamma_M^-(x), \beta_{M^c}^-(x) = -1 - \beta_M^-(x), \gamma_{M^c}^-(x) = \alpha_M^-(x)$ .

#### Definition 2.3.4

The union [30] of two BNSs  $M_1$  and  $M_2$  represented by  $M_1 \cup M_2$  is defined as follows:  $M_1 \cup M_2 = \{\text{Max}(T_{M_1}^+(x), T_{M_2}^+(x)), \text{Min}(I_{M_1}^+(x), I_{M_2}^+(x)), \text{Min}(F_{M_1}^+(x), F_{M_2}^+(x)), \text{Min}(T_{M_1}^-(x), T_{M_2}^-(x)), \text{Max}(I_{M_1}^-(x), I_{M_2}^-(x)), \text{Max}(F_{M_1}^-(x), F_{M_2}^-(x))\}, \forall x \in X$ .

#### Definition 2.3.5

The intersection [30] of two BNSs  $M_1$  and  $M_2$  denoted by  $M_1 \cap M_2$  is defined as follows:  $M_1 \cap M_2 = \{\text{Min}(T_{M_1}^+(x), T_{M_2}^+(x)), \text{Max}(I_{M_1}^+(x), I_{M_2}^+(x)), \text{Max}(F_{M_1}^+(x), F_{M_2}^+(x)), \text{Max}(T_{M_1}^-(x), T_{M_2}^-(x)), \text{Min}(I_{M_1}^-(x), I_{M_2}^-(x)), \text{Min}(F_{M_1}^-(x), F_{M_2}^-(x))\}, \forall x \in X$ .

**2.4 Interval bipolar neutrosophic sets**

Consider  $X$  be the space of objects, then an IBNS [31, 32]  $L$  in  $X$  is represented as follows:

$$L = \left\{ x, \left\langle \begin{array}{l} [\inf \alpha_L^+(x), \sup \alpha_L^+(x)], [\inf \beta_L^+(x), \sup \beta_L^+(x)], \\ [\inf \gamma_L^+(x), \sup \gamma_L^+(x)], [\inf \alpha_L^-(x), \sup \alpha_L^-(x)], \\ [\inf \beta_L^-(x), \sup \beta_L^-(x)], [\inf \gamma_L^-(x), \sup \gamma_L^-(x)] \end{array} \right\rangle \mid x \in X \right\}$$

where  $L$  is characterized by positive and negative truth-membership  $\alpha_L^+(x)$ ,  $\alpha_L^-(x)$ ; indeterminacy-membership  $\beta_L^+(x)$ ,  $\beta_L^-(x)$ ; falsity-membership  $\gamma_L^+(x)$ ,  $\gamma_L^-(x)$  functions respectively. Here,  $\alpha_L^+(x)$ ,  $\beta_L^+(x)$ ,  $\gamma_L^+(x) \subseteq [0, 1]$ ;  $\alpha_L^-(x)$ ,  $\beta_L^-(x)$ ,  $\gamma_L^-(x) \subseteq [-1, 0]$  for all  $x \in X$  with the conditions  $0 \leq \sup \alpha_L^+(x) + \sup \beta_L^+(x) + \sup \gamma_L^+(x) \leq 3$ , and  $-3 \leq \sup \alpha_L^-(x) + \sup \beta_L^-(x) + \sup \gamma_L^-(x) \leq 0$ .

**Definition 2.4.1 :** Let  $L_1 = \{x, < [\inf \alpha_{L_1}^+(x), \sup \alpha_{L_1}^+(x)]; [\inf \beta_{L_1}^+(x), \sup \beta_{L_1}^+(x)]; [\inf \gamma_{L_1}^+(x), \sup \gamma_{L_1}^+(x)]; [\inf \alpha_{L_1}^-(x), \sup \alpha_{L_1}^-(x)]; [\inf \beta_{L_1}^-(x), \sup \beta_{L_1}^-(x)]; [\inf \gamma_{L_1}^-(x), \sup \gamma_{L_1}^-(x)] > \mid x \in X\}$  and  $L_2 = \{x, < [\inf \alpha_{L_2}^+(x), \sup \alpha_{L_2}^+(x)]; [\inf \beta_{L_2}^+(x), \sup \beta_{L_2}^+(x)]; [\inf \gamma_{L_2}^+(x), \sup \gamma_{L_2}^+(x)]; [\inf \alpha_{L_2}^-(x), \sup \alpha_{L_2}^-(x)]; [\inf \beta_{L_2}^-(x), \sup \beta_{L_2}^-(x)]; [\inf \gamma_{L_2}^-(x), \sup \gamma_{L_2}^-(x)] > \mid x \in X\}$  be two IBNSs [31]. Then  $L_1 \subseteq L_2$  if and only if

$$\begin{aligned} \inf \alpha_{L_1}^+(x) &\leq \inf \alpha_{L_2}^+(x), & \sup \alpha_{L_1}^+(x) &\leq \sup \alpha_{L_2}^+(x), \\ \inf \beta_{L_1}^+(x) &\geq \inf \beta_{L_2}^+(x), & \sup \beta_{L_1}^+(x) &\geq \sup \beta_{L_2}^+(x), \\ \inf \gamma_{L_1}^+(x) &\geq \inf \gamma_{L_2}^+(x), & \sup \gamma_{L_1}^+(x) &\geq \sup \gamma_{L_2}^+(x), & \inf \alpha_{L_1}^-(x) &\geq \inf \alpha_{L_2}^-(x), \\ \sup \alpha_{L_1}^-(x) &\geq \sup \alpha_{L_2}^-(x), & \inf \beta_{L_1}^-(x) &\leq \inf \beta_{L_2}^-(x), & \sup \beta_{L_1}^-(x) &\leq \sup \beta_{L_2}^-(x), \\ \inf \gamma_{L_1}^-(x) &\leq \inf \gamma_{L_2}^-(x), & \sup \gamma_{L_1}^-(x) &\leq \sup \gamma_{L_2}^-(x), \end{aligned}$$

for all  $x \in X$ .

**Definition 2.4.2:** Consider  $L_1 = \{x, < [\inf \alpha_{L_1}^+(x), \sup \alpha_{L_1}^+(x)]; [\inf \beta_{L_1}^+(x), \sup \beta_{L_1}^+(x)]; [\inf \gamma_{L_1}^+(x), \sup \gamma_{L_1}^+(x)]; [\inf \alpha_{L_1}^-(x), \sup \alpha_{L_1}^-(x)]; [\inf \beta_{L_1}^-(x), \sup \beta_{L_1}^-(x)]; [\inf \gamma_{L_1}^-(x), \sup \gamma_{L_1}^-(x)] > \mid x \in X\}$  and  $L_2 = \{x, < [\inf \alpha_{L_2}^+(x), \sup \alpha_{L_2}^+(x)]; [\inf \beta_{L_2}^+(x), \sup \beta_{L_2}^+(x)]; [\inf \gamma_{L_2}^+(x), \sup \gamma_{L_2}^+(x)]; [\inf \alpha_{L_2}^-(x), \sup \alpha_{L_2}^-(x)]; [\inf \beta_{L_2}^-(x), \sup \beta_{L_2}^-(x)]; [\inf \gamma_{L_2}^-(x), \sup \gamma_{L_2}^-(x)] > \mid x \in X\}$  be two IBNSs [31]. Then  $L_1 = L_2$  if and only if

$$\begin{aligned} \inf \alpha_{L_1}^+(x) &= \inf \alpha_{L_2}^+(x), & \sup \alpha_{L_1}^+(x) &= \sup \alpha_{L_2}^+(x), \\ \inf \beta_{L_1}^+(x) &= \inf \beta_{L_2}^+(x), & \sup \beta_{L_1}^+(x) &= \sup \beta_{L_2}^+(x), & \inf \gamma_{L_1}^+(x) &= \inf \gamma_{L_2}^+(x), \\ \sup \gamma_{L_1}^+(x) &= \sup \gamma_{L_2}^+(x), & \inf \alpha_{L_1}^-(x) &= \inf \alpha_{L_2}^-(x), & \sup \alpha_{L_1}^-(x) &= \sup \alpha_{L_2}^-(x), \\ \inf \beta_{L_1}^-(x) &= \inf \beta_{L_2}^-(x), & \sup \beta_{L_1}^-(x) &= \sup \beta_{L_2}^-(x), & \inf \gamma_{L_1}^-(x) &= \inf \gamma_{L_2}^-(x), \\ \sup \gamma_{L_1}^-(x) &= \sup \gamma_{L_2}^-(x), \end{aligned}$$

for all  $x \in X$ .

**Definition 2.4.3:** The complement [33] of  $L = \{x, < [\inf \alpha_L^+(x), \sup \alpha_L^+(x)]; [\inf \beta_L^+(x), \sup \beta_L^+(x)]; [\inf \gamma_L^+(x), \sup \gamma_L^+(x)]; [\inf \alpha_L^-(x), \sup \alpha_L^-(x)]; [\inf \beta_L^-(x), \sup \beta_L^-(x)]; [\inf \gamma_L^-(x), \sup \gamma_L^-(x)] > \mid x \in X\}$  is defined as  $L^c = \{x, < [\inf \alpha_{L^c}^+(x), \sup \alpha_{L^c}^+(x)]; [\inf \beta_{L^c}^+(x), \sup \beta_{L^c}^+(x)]; [\inf \gamma_{L^c}^+(x), \sup \gamma_{L^c}^+(x)]; [\inf \alpha_{L^c}^-(x), \sup \alpha_{L^c}^-(x)]; [\inf \beta_{L^c}^-(x), \sup \beta_{L^c}^-(x)]; [\inf \gamma_{L^c}^-(x), \sup \gamma_{L^c}^-(x)] > \mid x \in X\}$  where

$$\begin{aligned} \inf \alpha_{L^c}^+(x) &= \inf \gamma_L^+(x), & \sup \alpha_{L^c}^+(x) &= \sup \gamma_L^+(x), & \inf \beta_{L^c}^+(x) &= 1 - \sup \beta_L^+(x), \\ \sup \beta_{L^c}^+(x) &= 1 - \inf \beta_L^+(x), & \inf \gamma_{L^c}^+(x) &= \inf \alpha_L^+, & \sup \gamma_{L^c}^+(x) &= \sup \alpha_L^+, \\ \inf \alpha_{L^c}^-(x) &= \inf \gamma_L^-, & \sup \alpha_{L^c}^-(x) &= \sup \gamma_L^-, & \inf \beta_{L^c}^-(x) &= -1 - \sup \beta_L^-(x), \\ \sup \beta_{L^c}^-(x) &= -1 - \inf \beta_L^-(x), & \inf \gamma_{L^c}^-(x) &= \inf \alpha_L^-(x), & \sup \gamma_{L^c}^-(x) &= \sup \alpha_L^-(x) \end{aligned}$$

for all  $x \in X$ .

**3 Correlation coefficient measures under IBNSs setting**

**Definition 3.1:** Let  $L_1$  and  $L_2$  be two IBNSs in  $X = \{x_1, x_2, \dots, x_n\}$ , then the correlation between  $L_1$  and  $L_2$  is defined as follows:

$$R(L_1, L_2) = \sum_{i=1}^n \left( \begin{array}{l} \inf \alpha_{L_1}^+(x_i). \inf \alpha_{L_2}^+(x_i) + \sup \alpha_{L_1}^+(x_i). \sup \alpha_{L_2}^+(x_i) + \\ \inf \beta_{L_1}^+(x_i). \inf \beta_{L_2}^+(x_i) + \sup \beta_{L_1}^+(x_i). \sup \beta_{L_2}^+(x_i) + \\ \inf \gamma_{L_1}^+(x_i). \inf \gamma_{L_2}^+(x_i) + \sup \gamma_{L_1}^+(x_i). \sup \gamma_{L_2}^+(x_i) + \\ \inf \alpha_{L_1}^-(x_i). \inf \alpha_{L_2}^-(x_i) + \sup \alpha_{L_1}^-(x_i). \sup \alpha_{L_2}^-(x_i) + \\ \inf \beta_{L_1}^-(x_i). \inf \beta_{L_2}^-(x_i) + \sup \beta_{L_1}^-(x_i). \sup \beta_{L_2}^-(x_i) + \\ \inf \gamma_{L_1}^-(x_i). \inf \gamma_{L_2}^-(x_i) + \sup \gamma_{L_1}^-(x_i). \sup \gamma_{L_2}^-(x_i) \end{array} \right)$$

**Definition 3.2:** Consider  $L_1$  and  $L_2$  be two IBNSs in  $X = \{x_1, x_2, \dots, x_n\}$ , then the correlation coefficient between  $L_1$  and  $L_2$  is defined as follows:

$$Cor(L_1, L_2) = \frac{R(L_1, L_2)}{[R(L_1, L_1) \cdot R(L_2, L_2)]^{1/2}} \quad (1)$$

where

$$R(L_1, L_2) = \sum_{i=1}^n \begin{pmatrix} \inf \alpha_{L_1}^+(x_i) \cdot \inf \alpha_{L_2}^+(x_i) + \sup \alpha_{L_1}^+(x_i) \cdot \sup \alpha_{L_2}^+(x_i) + \\ \inf \beta_{L_1}^+(x_i) \cdot \inf \beta_{L_2}^+(x_i) + \sup \beta_{L_1}^+(x_i) \cdot \sup \beta_{L_2}^+(x_i) + \\ \inf \gamma_{L_1}^+(x_i) \cdot \inf \gamma_{L_2}^+(x_i) + \sup \gamma_{L_1}^+(x_i) \cdot \sup \gamma_{L_2}^+(x_i) + \\ \inf \alpha_{L_1}^-(x_i) \cdot \inf \alpha_{L_2}^-(x_i) + \sup \alpha_{L_1}^-(x_i) \cdot \sup \alpha_{L_2}^-(x_i) + \\ \inf \beta_{L_1}^-(x_i) \cdot \inf \beta_{L_2}^-(x_i) + \sup \beta_{L_1}^-(x_i) \cdot \sup \beta_{L_2}^-(x_i) + \\ \inf \gamma_{L_1}^-(x_i) \cdot \inf \gamma_{L_2}^-(x_i) + \sup \gamma_{L_1}^-(x_i) \cdot \sup \gamma_{L_2}^-(x_i) \end{pmatrix}$$

$$R(L_1, L_1) = \sum_{i=1}^n \begin{pmatrix} (\inf \alpha_{L_1}^+(x_i))^2 + (\sup \alpha_{L_1}^+(x_i))^2 + (\inf \beta_{L_1}^+(x_i))^2 + \\ (\sup \beta_{L_1}^+(x_i))^2 + (\inf \gamma_{L_1}^+(x_i))^2 + (\sup \gamma_{L_1}^+(x_i))^2 + \\ (\inf \alpha_{L_1}^-(x_i))^2 + (\sup \alpha_{L_1}^-(x_i))^2 + (\inf \beta_{L_1}^-(x_i))^2 + \\ (\sup \beta_{L_1}^-(x_i))^2 + (\inf \gamma_{L_1}^-(x_i))^2 + (\sup \gamma_{L_1}^-(x_i))^2 \end{pmatrix}$$

$$R(L_2, L_2) = \sum_{i=1}^n \begin{pmatrix} (\inf \alpha_{L_2}^+(x_i))^2 + (\sup \alpha_{L_2}^+(x_i))^2 + (\inf \beta_{L_2}^+(x_i))^2 + \\ (\sup \beta_{L_2}^+(x_i))^2 + (\inf \gamma_{L_2}^+(x_i))^2 + (\sup \gamma_{L_2}^+(x_i))^2 + \\ (\inf \alpha_{L_2}^-(x_i))^2 + (\sup \alpha_{L_2}^-(x_i))^2 + (\inf \beta_{L_2}^-(x_i))^2 + \\ (\sup \beta_{L_2}^-(x_i))^2 + (\inf \gamma_{L_2}^-(x_i))^2 + (\sup \gamma_{L_2}^-(x_i))^2 \end{pmatrix}$$

**Theorem 1.** The correlation coefficient measure  $Cor(L_1, L_2)$  between two IBNSs  $L_1, L_2$  satisfies the following properties:

- (C1)  $Cor(L_1, L_2) = Cor(L_2, L_1)$  ;  
 (C2)  $0 \leq Cor(L_1, L_2) \leq 1$ ;  
 (C3)  $Cor(L_1, L_2) = 1$ , if  $L_1 = L_2$ .

**Proof:**

$$(1) Cor(L_1, L_2) = \frac{R(L_1, L_2)}{[R(L_1, L_1) \times R(L_2, L_2)]^{1/2}} \\ = \frac{R(L_2, L_1)}{[R(L_2, L_2) \times R(L_1, L_1)]^{1/2}} = Cor(L_2, L_1).$$

(2) Since,  $R(L_1, L_2) \geq 0$ ,  $R(L_1, L_1) \geq 0$ ,  $R(L_2, L_2) \geq 0$  and using Cauchy-Schwarz inequality we can easily prove that  $Cor(L_1, L_2) \leq 1$ , therefore,  $0 \leq Cor(L_1, L_2) \leq 1$ .

(3) If  $L_1 = L_2$ , then  $\inf \alpha_{L_1}^+(x) = \inf \alpha_{L_2}^+(x)$ ,  $\sup \alpha_{L_1}^+(x) = \sup \alpha_{L_2}^+(x)$ ,  $\inf \beta_{L_1}^+(x) = \inf \beta_{L_2}^+(x)$ ,  $\sup \beta_{L_1}^+(x) = \sup \beta_{L_2}^+(x)$ ,  $\inf \gamma_{L_1}^+(x) = \inf \gamma_{L_2}^+(x)$ ,  $\sup \gamma_{L_1}^+(x) = \sup \gamma_{L_2}^+(x)$ ,  $\inf \alpha_{L_1}^-(x) = \inf \alpha_{L_2}^-(x)$ ,  $\sup \alpha_{L_1}^-(x) = \sup \alpha_{L_2}^-(x)$ ,  $\inf \beta_{L_1}^-(x) = \inf \beta_{L_2}^-(x)$ ,  $\sup \beta_{L_1}^-(x) = \sup \beta_{L_2}^-(x)$ ,  $\inf \gamma_{L_1}^-(x) = \inf \gamma_{L_2}^-(x)$ ,  $\sup \gamma_{L_1}^-(x) = \sup \gamma_{L_2}^-(x)$ .

$\alpha_{L_2}^-(x)$ ,  $\sup \gamma_{L_1}^-(x) = \sup \gamma_{L_2}^-(x)$  for any  $x \in X$  and therefore,  $Cor(L_1, L_2) = 1$ .

**Definition 3.3:** Let  $w_i = (w_1, w_2, \dots, w_n) \in [0, 1]$  be the weight vector of the elements  $x_j$  ( $j = 1, 2, \dots, n$ ), the weighted correlation coefficient between two IBNSs  $L_1, L_2$  can be defined by the following formula

$$Cor_w(L_1, L_2) = \frac{R_w(L_1, L_2)}{[R_w(L_1, L_1) \cdot R_w(L_2, L_2)]^{1/2}} \quad (2)$$

where

$$R_w(L_1, L_2) = \sum_{i=1}^n w_i \begin{pmatrix} \inf \alpha_{L_1}^+(x_i) \cdot \inf \alpha_{L_2}^+(x_i) + \sup \alpha_{L_1}^+(x_i) \cdot \sup \alpha_{L_2}^+(x_i) + \\ \inf \beta_{L_1}^+(x_i) \cdot \inf \beta_{L_2}^+(x_i) + \sup \beta_{L_1}^+(x_i) \cdot \sup \beta_{L_2}^+(x_i) + \\ \inf \gamma_{L_1}^+(x_i) \cdot \inf \gamma_{L_2}^+(x_i) + \sup \gamma_{L_1}^+(x_i) \cdot \sup \gamma_{L_2}^+(x_i) + \\ \inf \alpha_{L_1}^-(x_i) \cdot \inf \alpha_{L_2}^-(x_i) + \sup \alpha_{L_1}^-(x_i) \cdot \sup \alpha_{L_2}^-(x_i) + \\ \inf \beta_{L_1}^-(x_i) \cdot \inf \beta_{L_2}^-(x_i) + \sup \beta_{L_1}^-(x_i) \cdot \sup \beta_{L_2}^-(x_i) + \\ \inf \gamma_{L_1}^-(x_i) \cdot \inf \gamma_{L_2}^-(x_i) + \sup \gamma_{L_1}^-(x_i) \cdot \sup \gamma_{L_2}^-(x_i) \end{pmatrix}$$

$$R_w(L_1, L_1) = \sum_{i=1}^n w_i \begin{pmatrix} (\inf \alpha_{L_1}^+(x_i))^2 + (\sup \alpha_{L_1}^+(x_i))^2 + (\inf \beta_{L_1}^+(x_i))^2 + \\ (\sup \beta_{L_1}^+(x_i))^2 + (\inf \gamma_{L_1}^+(x_i))^2 + (\sup \gamma_{L_1}^+(x_i))^2 + \\ (\inf \alpha_{L_1}^-(x_i))^2 + (\sup \alpha_{L_1}^-(x_i))^2 + (\inf \beta_{L_1}^-(x_i))^2 + \\ (\sup \beta_{L_1}^-(x_i))^2 + (\inf \gamma_{L_1}^-(x_i))^2 + (\sup \gamma_{L_1}^-(x_i))^2 \end{pmatrix}$$

$$R_w(L_2, L_2) = \sum_{i=1}^n w_i \begin{pmatrix} (\inf \alpha_{L_2}^+(x_i))^2 + (\sup \alpha_{L_2}^+(x_i))^2 + (\inf \beta_{L_2}^+(x_i))^2 + \\ (\sup \beta_{L_2}^+(x_i))^2 + (\inf \gamma_{L_2}^+(x_i))^2 + (\sup \gamma_{L_2}^+(x_i))^2 + \\ (\inf \alpha_{L_2}^-(x_i))^2 + (\sup \alpha_{L_2}^-(x_i))^2 + (\inf \beta_{L_2}^-(x_i))^2 + \\ (\sup \beta_{L_2}^-(x_i))^2 + (\inf \gamma_{L_2}^-(x_i))^2 + (\sup \gamma_{L_2}^-(x_i))^2 \end{pmatrix}$$

If  $w = (1/n, 1/n, \dots, 1/n)^T$ , the Eq. (2) is reduced to Eq. (1).

**Theorem 2.** The weighted correlation coefficient measure  $Cor_w(L_1, L_2)$  between two IBNSs  $L_1, L_2$  also satisfies the following properties:

- (C1)  $Cor_w(L_1, L_2) = Cor_w(L_2, L_1)$ ;  
 (C2)  $0 \leq Cor_w(L_1, L_2) \leq 1$ ;  
 (C3)  $Cor_w(L_1, L_2) = 1$ , if  $L_1 = L_2$ .

**Proof:**

$$(1) Cor_w(L_1, L_2) = \frac{R_w(L_1, L_2)}{[R_w(L_1, L_1) \cdot R_w(L_2, L_2)]^{1/2}} \\ = \frac{R_w(L_2, L_1)}{[R_w(L_2, L_2) \cdot R_w(L_1, L_1)]^{1/2}} = Cor_w(L_2, L_1).$$

(2) Since,  $R_w(L_1, L_2) \geq 0$ ,  $R_w(L_1, L_1) \geq 0$ ,  $R_w(L_2, L_2) \geq 0$  and using Cauchy-Schwarz inequality we can easily prove that  $Cor_w(L_1, L_2) \leq 1$ , so,  $0 \leq Cor_w(L_1, L_2) \leq 1$ .

(3) If  $L_1 = L_2$ , then  $\inf \alpha_{L_1}^+(x) = \inf \alpha_{L_2}^+(x)$ ,  $\sup \alpha_{L_1}^+(x) = \sup \alpha_{L_2}^+(x)$ ,  $\inf \beta_{L_1}^+(x) = \inf \beta_{L_2}^+(x)$ ,  $\sup \beta_{L_1}^+(x) = \sup \beta_{L_2}^+(x)$ ,  $\inf \gamma_{L_1}^+(x) = \inf \gamma_{L_2}^+(x)$ ,  $\sup \gamma_{L_1}^+(x) = \sup \gamma_{L_2}^+(x)$ ,  $\inf \alpha_{L_1}^-(x) = \inf \alpha_{L_2}^-(x)$ ,  $\sup \alpha_{L_1}^-(x) = \sup \alpha_{L_2}^-(x)$ ,  $\inf \beta_{L_1}^-(x) = \inf \beta_{L_2}^-(x)$ ,  $\sup \beta_{L_1}^-(x) = \sup \beta_{L_2}^-(x)$ ,  $\inf \gamma_{L_1}^-(x) = \inf \gamma_{L_2}^-(x)$ ,  $\sup \gamma_{L_1}^-(x) = \sup \gamma_{L_2}^-(x)$  for any  $x \in X$  and hence,  $Cor_w(L_1, L_2) = 1$ .

**Example 1.** Suppose that  $L_1 = < [0.3, 0.7], [0.3, 0.8], [0.5, 0.9], [-0.9, -0.3], [-0.6, -0.2], [-0.8, -0.4] >$  and  $L_2 = < [0.1, 0.6], [0.2, 0.7], [0.3, 0.5], [-0.8, -0.2], [-0.8, -0.3], [-0.7, -0.4] >$  be two IBNSs, then correlation coefficient between  $L_1$  and  $L_2$  is obtain using Eq. (1) as follows:

$$Cor(L_1, L_2) = 0.4870391.$$

**Example 2.** If  $w = 0.4$ , then the weighted correlation coefficient between  $L_1 = < [0.3, 0.7], [0.3, 0.8], [0.5, 0.9], [-0.9, -0.3], [-0.6, -0.2], [-0.8, -0.4] >$  and  $L_2 = < [0.1, 0.6], [0.2, 0.7], [0.3, 0.5], [-0.8, -0.2], [-0.8, -0.3], [-0.7, -0.4] >$  is calculated by using Eq. (2) as follows.

$$Cor_w(L_1, L_2) = 0.5689123.$$

#### 4. MADM strategy based on weighted correlation coefficient measure in IBNS environment

In this section, we have developed a novel MADM strategy based on weighted correlation coefficient measure in interval bipolar neutrosophic environment. Let,  $F = \{F_1, F_2, \dots, F_m\}$ , ( $m \geq 2$ ) be a discrete set of  $m$  feasible alternatives,  $G = \{G_1, G_2, \dots, G_n\}$ , ( $n \geq 2$ ) be a set of  $n$  predefined attributes and  $w_j$  be the weight vector of the attributes such that  $0 \leq w_j \leq 1$  and  $\sum_{j=1}^n w_j = 1$ . The steps for solving MADM problems in IBNS environment are presented as follows.

**Step 1.** The evaluation of the performance value of alternative  $F_i$  ( $i = 1, 2, \dots, m$ ) with regard to the predefined attribute  $G_j$  ( $j = 1, 2, \dots, n$ ) provided by the decision maker or expert can be presented in terms of interval bipolar neutrosophic values  $q_{ij} = < [\inf \alpha_{ij}^+, \sup \alpha_{ij}^+], [\inf \beta_{ij}^+, \sup \beta_{ij}^+], [\inf \gamma_{ij}^+, \sup \gamma_{ij}^+], [\inf \alpha_{ij}^-, \sup \alpha_{ij}^-], [\inf \beta_{ij}^-, \sup \beta_{ij}^-], [\inf \gamma_{ij}^-, \sup \gamma_{ij}^-] > = < c_{ij}, d_{ij}, e_{ij}, f_{ij}, g_{ij}, h_{ij}, r_{ij}, s_{ij}, t_{ij}, u_{ij}, v_{ij}, w_{ij} >$ ,  $i = 1, 2, \dots, m$ ;  $j = 1, 2, \dots, n$ . The interval bipolar neutrosophic decision matrix  $[\tilde{R}_{ij}]_{m \times n}$  is presented as given below.

$$[\tilde{R}_{ij}]_{m \times n} = \begin{matrix} & G_1 & G_2 & \dots & G_n \\ \begin{matrix} F_1 \\ F_2 \\ \dots \\ F_m \end{matrix} & \begin{pmatrix} q_{11} & q_{12} & \dots & q_{1n} \\ q_{21} & q_{22} & \dots & q_{2n} \\ \dots & \dots & \dots & \dots \\ q_{m1} & q_{m2} & \dots & q_{mn} \end{pmatrix} \end{matrix}$$

**Step 2.** The interval bipolar neutrosophic positive ideal solution (IBN-PIS) can be defined as follows:  $Q^* = < c_j^+, d_j^+, e_j^+, f_j^+, g_j^+, h_j^+, r_j^+, s_j^+, t_j^+, u_j^+, v_j^+, w_j^+ > = < [\{\underset{i}{\text{Max}}(c_{ij}) | j \in J^+; \underset{i}{\text{Min}}(c_{ij}) | j \in J^-\}, \{\underset{i}{\text{Max}}(d_{ij}) | j \in J^+; \underset{i}{\text{Min}}(d_{ij}) | j \in J^-\}, \{\underset{i}{\text{Min}}(e_{ij}) | j \in J^+; \underset{i}{\text{Max}}(e_{ij}) | j \in J^-\}, \{\underset{i}{\text{Min}}(f_{ij}) | j \in J^+; \underset{i}{\text{Max}}(f_{ij}) | j \in J^-\}, \{\underset{i}{\text{Min}}(g_{ij}) | j \in J^+; \underset{i}{\text{Max}}(g_{ij}) | j \in J^-\}, \{\underset{i}{\text{Min}}(h_{ij}) | j \in J^+; \underset{i}{\text{Max}}(h_{ij}) | j \in J^-\}, \{\underset{i}{\text{Min}}(r_{ij}) | j \in J^+; \underset{i}{\text{Max}}(r_{ij}) | j \in J^-\}, \{\underset{i}{\text{Min}}(s_{ij}) | j \in J^+; \underset{i}{\text{Max}}(s_{ij}) | j \in J^-\}, \{\underset{i}{\text{Max}}(t_{ij}) | j \in J^+; \underset{i}{\text{Min}}(t_{ij}) | j \in J^-\}, \{\underset{i}{\text{Max}}(u_{ij}) | j \in J^+; \underset{i}{\text{Min}}(u_{ij}) | j \in J^-\}, \{\underset{i}{\text{Max}}(v_{ij}) | j \in J^+; \underset{i}{\text{Min}}(v_{ij}) | j \in J^-\}, \{\underset{i}{\text{Max}}(w_{ij}) | j \in J^+; \underset{i}{\text{Min}}(w_{ij}) | j \in J^-\} >$ ,  $j = 1, 2, \dots, n$ , where  $J^+, J^-$  denote the benefit and cost type attributes, respectively.

**Step 3.** The weighted correlation coefficient of IBNS between alternative  $F_i$  ( $i = 1, 2, \dots, m$ ) and the ideal alternative  $Q^*$  can be derived as follows:

$$Cor_w(F_i, Q^*) = \frac{R_w(F_i, Q^*)}{[R_w(F_i, F_i) \cdot R_w(Q^*, Q^*)]^{1/2}}$$

where,

$$R_w(F_i, Q^*) = \sum_{j=1}^n w_j [c_{ij} \cdot c_j^+ + d_{ij} \cdot d_j^+ + e_{ij} \cdot e_j^+ + f_{ij} \cdot f_j^+ + g_{ij} \cdot g_j^+ + h_{ij} \cdot h_j^+ + r_{ij} \cdot r_j^+ + s_{ij} \cdot s_j^+ + t_{ij} \cdot t_j^+ + u_{ij} \cdot u_j^+ + v_{ij} \cdot v_j^+ + w_{ij} \cdot w_j^+]$$

$$R_w(F_i, F_i) = \sum_{j=1}^n w_j [(c_{ij})^2 + (d_{ij})^2 + (e_{ij})^2 + (f_{ij})^2 + (g_{ij})^2 + (h_{ij})^2 + (r_{ij})^2 + (s_{ij})^2 + (t_{ij})^2 + (u_{ij})^2 + (v_{ij})^2 + (w_{ij})^2]$$

$$R_w(Q^*, Q^*) = \sum_{i=1}^n w_j [(c_j^+)^2 + (d_j^+)^2 + (e_j^+)^2 + (f_j^+)^2 + (g_j^+)^2 + (h_j^+)^2 + (r_j^+)^2 + (s_j^+)^2 + (t_j^+)^2 + (u_j^+)^2 + (v_j^+)^2 + (w_j^+)^2]$$

**Step 4:** The biggest value of  $Cor_w(F_i, Q^*)$ ,  $i = 1, 2, \dots, m$  implies  $F_i$ , ( $i = 1, 2, \dots, m$ ) is the better alternative.

In Fig 1. we represent the steps for solving MADM problems based on weighted correlation coefficient measure in IBNS environment.

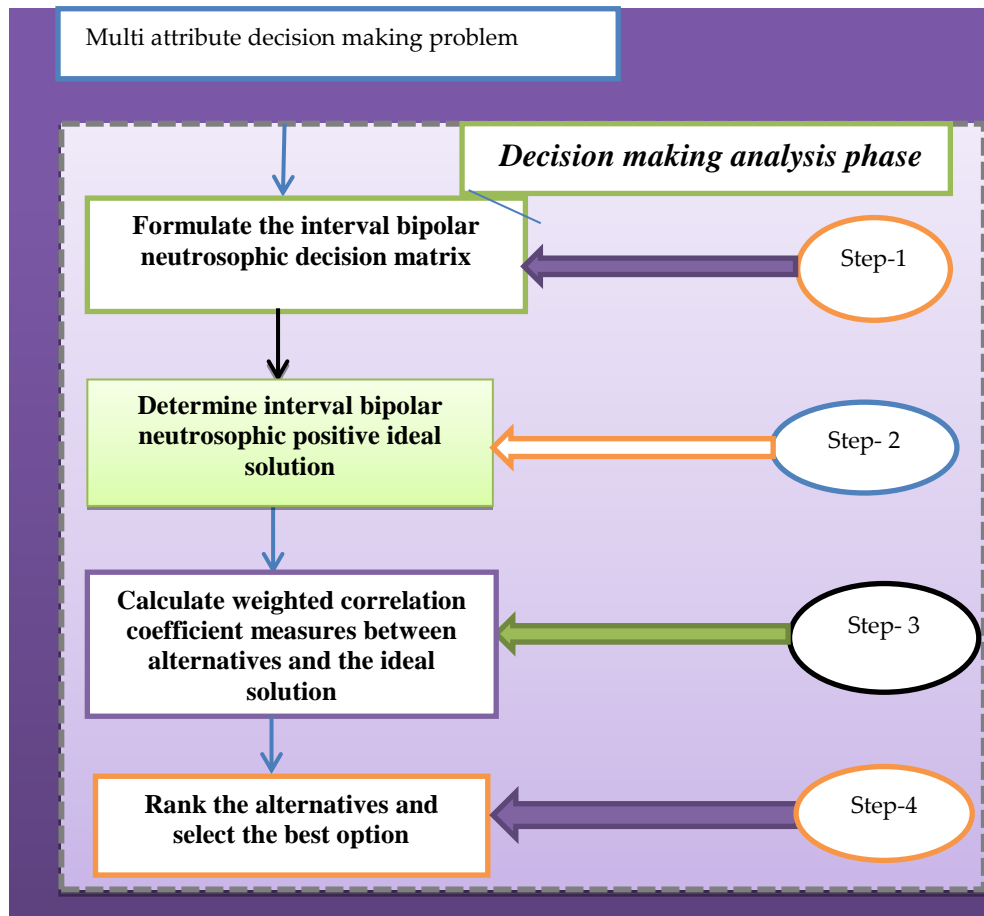


Figure.1 Decision making procedure of proposed MADM strategy

## 5. Numerical example

In this section, an illustrative numerical problem is solved to illustrate the proposed strategy. We consider an MADM studied in [31, 33] where there are four possible alternatives to invest money namely, a food company ( $F_1$ ), a car company ( $F_2$ ), a arm company ( $F_3$ ), and a computer company ( $F_4$ ). The investment company must take a decision based on the three predefined attributes namely growth analysis ( $G_1$ ), risk analysis ( $G_2$ ), and environment analysis ( $G_3$ ) where  $G_1, G_2$  are the benefit type and  $G_3$  is the cost type attribute [34] and the weight vector of  $G_1, G_2$ , and  $G_3$  is given by  $w = (w_1, w_2, w_3) = (0.35, 0.25, 0.4)$  [31].

The proposed strategy consisting of the following steps:

**Step 1.** The evaluation of performance value of the alternatives with respect to the attributes provided by the decision maker can be expressed by interval bipolar neutrosophic values and the decision matrix is presented as follows:

$$\begin{array}{c} \text{Interval bipolar neutrosophic decision matrix} \\ G_1 \\ \left( \begin{array}{l} F_1 \\ F_2 \\ F_3 \\ F_4 \end{array} \right) \left[ \begin{array}{l} [0.4, 0.5], [0.2, 0.3], [0.3, 0.4], [-0.3, -0.2], [-0.4, -0.3], [-0.5, -0.4] \\ [0.6, 0.7], [0.1, 0.2], [0.2, 0.3], [-0.2, -0.1], [-0.3, -0.2], [-0.7, -0.6] \\ [0.3, 0.6], [0.2, 0.3], [0.3, 0.4], [-0.3, -0.2], [-0.4, -0.3], [-0.6, -0.3] \\ [0.7, 0.8], [0.0, 0.1], [0.1, 0.2], [-0.1, -0.0], [-0.2, -0.1], [-0.8, -0.7] \end{array} \right) \\ \\ G_2 \\ \left( \begin{array}{l} F_1 \\ F_2 \\ F_3 \\ F_4 \end{array} \right) \left[ \begin{array}{l} [0.4, 0.6], [0.1, 0.3], [0.2, 0.4], [-0.3, -0.1], [-0.4, -0.2], [-0.6, -0.4] \\ [0.6, 0.7], [0.1, 0.2], [0.2, 0.3], [-0.2, -0.1], [-0.3, -0.2], [-0.7, -0.6] \\ [0.5, 0.6], [0.2, 0.3], [0.3, 0.4], [-0.3, -0.2], [-0.4, -0.3], [-0.6, -0.5] \\ [0.6, 0.7], [0.1, 0.2], [0.1, 0.3], [-0.2, -0.1], [-0.3, -0.1], [-0.7, -0.6] \end{array} \right) \\ \\ G_3 \end{array}$$



$$\begin{pmatrix} F_1 & [[0.7, 0.9], [0.2, 0.3], [0.4, 0.5], [-0.3, -0.2], [-0.5, -0.4], [-0.9, -0.7]] \\ F_2 & [[0.3, 0.6], [0.3, 0.5], [0.8, 0.9], [-0.5, -0.3], [-0.9, -0.8], [-0.6, -0.3]] \\ F_3 & [[0.4, 0.5], [0.2, 0.4], [0.7, 0.9], [-0.4, -0.2], [-0.9, -0.7], [-0.5, -0.4]] \\ F_4 & [[0.6, 0.7], [0.3, 0.4], [0.8, 0.9], [-0.4, -0.3], [-0.9, -0.8], [-0.7, -0.6]] \end{pmatrix}$$

**Step 2.** Determine the IBN-PIS ( $Q^*$ ) from interval bipolar neutrosophic decision matrix as follows:

$$\begin{aligned} & \langle [c_1^+, d_1^+], [e_1^+, f_1^+], [g_1^+, h_1^+], [r_1^-, s_1^-], [t_1^-, u_1^-], [v_1^-, w_1^-] \rangle = \\ & < [0.7, 0.8], [0.0, 0.1], [0.1, 0.2], [-0.3, -0.2], [-0.2, -0.1], [-0.5, -0.3]; \end{aligned}$$

$$\begin{aligned} & \langle [c_2^+, d_2^+], [e_2^+, f_2^+], [g_2^+, h_2^+], [r_2^-, s_2^-], [t_2^-, u_2^-], [v_2^-, w_2^-] \rangle = < \\ & [0.6, 0.7], [0.1, 0.2], [0.1, 0.3], [-0.3, -0.2], [-0.3, -0.1], [-0.6, -0.4]; \end{aligned}$$

$$\begin{aligned} & \langle [c_3^+, d_3^+], [e_3^+, f_3^+], [g_3^+, h_3^+], [r_3^-, s_3^-], [t_3^-, u_3^-], [v_3^-, w_3^-] \rangle = < \\ & [0.3, 0.5], [0.3, 0.5], [0.8, 0.9], [-0.3, -0.2], [-0.9, -0.8], [-0.9, -0.7]. \end{aligned}$$

**Step 3.** The weighted correlation coefficient  $Cor_w(F_i, Q^*)$  between alternative  $F_i$  ( $i = 1, 2, \dots, m$ ) and IBN-PIS  $Q^*$  is obtained as given below.

$$R_w(F_1, Q^*) = 2.4465, R_w(F_1, F_1) = 2.585351, R_w(Q^*, Q^*) = 2.850693, Cor_w(F_1, Q^*) = 0.331952,$$

$$R_w(F_2, Q^*) = 2.9205, R_w(F_2, F_2) = 2.905408, Cor_w(F_2, Q^*) = 0.3526141,$$

$$R_w(F_3, Q^*) = 2.6625, R_w(F_3, F_3) = 2.701919, Cor_w(F_3, Q^*) = 0.3456741,$$

$$R_w(F_4, Q^*) = 3.098, R_w(F_4, F_4) = 3.048081, Cor_w(F_4, Q^*) = 0.3565369.$$

We observe that  $Cor_w(F_4, Q^*) > Cor_w(F_2, Q^*) > Cor_w(F_3, Q^*) > Cor_w(F_1, Q^*)$ .

**Step 4.** According to the weighted correlation coefficient values, the ranking order of the companies is presented as:

$$F_4 > F_2 > F_3 > F_1.$$

Hence, the most desirable investment company is  $F_4$ .

In Fig 2. we represent the graphical representation of alternatives versus weighted correlation coefficient values.

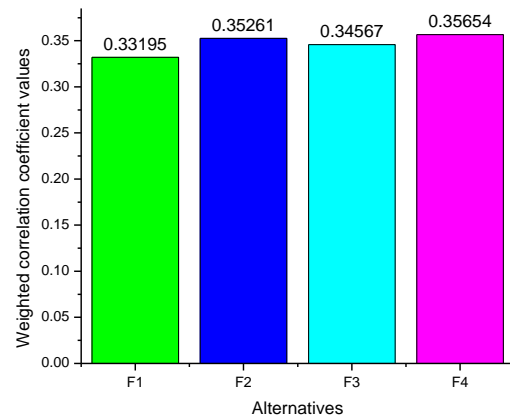


Fig 2. Graphical representation of alternatives versus weighted correlation coefficient values.

Next, we compare the obtained results with the results of Mahmood et al. [31] and Pramanik et al. [33] in Table 1 where the weight vector of the attributes is  $w = (0.35, 0.25, 0.4)$  [31]. We see that ranking orders of alternatives derived by the proposed strategy and the strategies discussed by Mahmood et al. [31] and Pramanik et al. [33] are different. We also observe that  $F_4$  is the best option obtained by the proposed strategy as well as the strategy discussed by Mahmood et al. [31]. However, Pramanik et al. [33] found that  $F_2$  is the most desirable alternative based on weighted cross entropy measure.

**Table 1.** The results derived from different strategies

strategy	Ranking results	Best choice
The proposed weighted correlation coefficient strategy	$F_4 \succ F_2 \succ F_3 \succ F_1$	$F_4$
Mahmood et al.'s strategy [31]	$F_4 \succ F_1 \succ F_3 \succ F_2$	$F_4$
Weighted cross entropy measure [33]	$F_1 \prec F_3 \prec F_4 \prec F_2$	$F_2$

## 6 Conclusion

In the study, we have defined correlation coefficient and weighted correlation coefficient measures in interval bipolar neutrosophic environments and prove their basic properties. Using the proposed weighted correlation coefficient measure, we have developed a novel MADM strategy in interval bipolar neutrosophic environment. We have solved an investment problem with interval bipolar neutrosophic information. Comparison analysis with other existing strategies is presented to demonstrate the feasibility and applicability of the proposed strategy. We hope that the proposed correlation coefficient measures can be employed to tackle realistic multi attribute decision making problems such as clustering analysis [15], medical diagnosis [21], weaver selection [35-37], fault diagnosis [38], brick selection [39- 40], data mining [41], logistic centre location selection [42- 43], school selection [44], teacher selection [45-47], image processing, information fusion, etc. in interval bipolar neutrosophic environment. Using aggregation operators, the proposed strategy can be extended to multi attribute group decision making problem in interval bipolar neutrosophic set environment.

## References

1. F. Smarandache. A unifying field in logics: Neutrosophic logic. Neutrosophy, neutrosophic set, neutrosophic probability, and neutrosophic statistics. American Research Press, Rehoboth, 1998.
2. I. M. Hanafy, A. A. Salama, and K. M. Hahfouz. Correlation of neutrosophic data. *International Refereed Journal of Engineering and Science*, 1(2) (2012), 39-43.
3. I. M. Hanafy, A. A. Salama, and K. M. Hahfouz. Correlation coefficients of neutrosophic sets by centroid method. *International Journal of Probability and Statistics*, 2(1) (2013), 9-12.
4. J. Ye. Multicriteria decision-making method using the correlation coefficient under single-valued neutrosophic environment. *International Journal of General Systems*, 42(4) (2013), 386-394.
5. H. Wang, F. Smarandache, Y. Q. Zhang, and R. Sundaraman. Single valued neutrosophic sets. *Multispace and Multistructure*, 4 (2010), 410-413.
6. S. Broumi, and F. Smarandache. Correlation coefficient of interval neutrosophic set. *Applied Mechanics and Materials*, 436 (2013), 511-517.
7. H. Wang, F. Smarandache, Y. Q. Zhang, and R. Sundaraman. Interval neutrosophic sets and logic: theory and applications in computing. Hexis, Arizona, 2005.
8. I. M. Hanafy, A. A. Salama, O. M. Khaled, and K. M. Hahfouz. Correlation of neutrosophic sets in probability spaces. *Journal of Applied Mathematics, Statistics and Informatics*, 10(1) (2014), 45-62.
9. J. Ye. Improved correlation coefficients of single value neutrosophic sets and interval neutrosophic sets for multiple attribute decision making. *Journal of Intelligent and Fuzzy Systems*, 27(5), (2014), 2453-2462.
10. S. Broumi, and I. Deli. Correlation measure for neutrosophic refined sets and its application medical diagnosis. *Palestine Journal of Mathematics*, 3(1) (2014), 11-19.
11. F. Smarandache.  $n$  – Valued refined neutrosophic logic and its application in physics. *Progress in Physics*, 4 (2013), 143-146.
12. P. Rajarajeswari, and N. Uma. Correlation measure for intuitionistic fuzzy multi sets. *International Journal of Research in Engineering and Technology*, 3(1) (2014), 611-617.
13. H. Zhang, P. Ji, J. Wang, and X. Chen. An improved weighted correlation coefficient based on integrated weight for interval neutrosophic sets and its application in multi-criteria decision making problems. *International Journal of Computational Intelligence Systems*, 8(6) (2015). doi: 10.1080/18756891.2015.1099917.
14. F. Karaaslan. Correlation coefficient between possibility neutrosophic soft sets. *Mathematics Science Letters*, 5(1) (2016), 71-74.
15. F. Karaaslan. Correlation coefficient of single-valued neutrosophic refined soft sets and their applications in clustering analysis. *Neural Computing and Applications*, (2016). doi: 10.1007/s00521-016-2209-8.
16. R. Şahin, and P. Liu. Correlation coefficient of single-valued neutrosophic hesitant fuzzy sets and their applications in decision making. *Neural Computing and Applications*, 28(6) (2017), 1387-1395.
17. C. Liu, and Y. Luo. Correlation coefficient for the interval-valued neutrosophic hesitant fuzzy sets and its use in multiple-attribute decision making. In *3<sup>rd</sup> International Conference on Engineering Technology and Application, (ICETA 2016)*, (2016), 222-227.
18. P. D. Liu, and L. L. Shi. The generalized hybrid weighted average operator based on interval neutrosophic hesitant set and its application to multiple attribute decision making. *Neural Computing and Applications*, 26 (2015), 457-471.
19. J. Ye. Correlation coefficient between dynamic single valued neutrosophic multisets and its multiple attribute decision-making method. *Information*, 8 (2017), 1-9. doi: 10.3390/info8020041.
20. J. Ye. Multiple attribute decision making method using correlation coefficients of normal neutrosophic sets. *Symmetry*, 9 (2017), 1-10. doi.: 10.3390/sym9060080.
21. S. Pramanik, R. Roy, T. K. Roy, and F. Smarandache. Multi criteria decision making using correlation coefficient under rough neutrosophic environment. *Neutrosophic Sets and Systems*, 17 (2017), 29-36. doi: 10.5281/zenodo.1012237.
22. I. Deli, M. Ali, and F. Smarandache, Bipolar neutrosophic sets and their application based on multi-criteria decision making problems. In *International conference on advanced mechatronic systems (ICAMechS)* (IEEE, August, 2015), 249-254.
23. W. R. Zhang, Bipolar fuzzy sets and relations: a computational framework for cognitive modeling and multiagent decision analysis. In *Proc. of IEEE Conf.* (1994), 305-309. doi 10.1109/IJCF.1994.375115.
24. W. R. Zhang. Bipolar fuzzy sets, in *Proc. of the IEEE World Congress on Computational Science (FuzzIEEE)* (Anchor-age, Alaska, 1998), 835-840. doi:10.1109/FUZZY.1998.687599.

25. D. Ezhilmaran, and K. Shankar. Morphism of bipolar intuitionistic fuzzy graphs. *Journal of Discrete Mathematical Sciences and Cryptography*, 18 (5) (2015), 605-621.
26. P. P. Dey, S. Pramanik, and B.C. Giri. TOPSIS for solving multi-attribute decision making problems under bi-polar neutrosophic environment. In F. Smarandache, & S. Pramanik (Eds.), *New Trends in Neutrosophic Theory and Applications*. Pons Edition, Brussels, 2016, 65-77.
27. I. Deli, and Y. A. Subas. Multiple criteria decision making method on single valued bipolar neutrosophic set based on correlation coefficient similarity measure. In *International Conference on mathematics and mathematics education (ICMME-2016)*, Frat University, Elazg, Turkey, 12-14 May 2016.
28. M. Şahin, I. Deli, and V. Uluçay, Jaccard vector similarity measure of bipolar neutrosophic set based on multi-criteria decision making. In *International Conference on Natural Science and Engineering (ICNASE'16)*, Killis, 19-20 March 2016.
29. V. Uluçay, I. Deli, and M.Şahin, Similarity measures of bipolar neutrosophic sets and their application to multiple criteria decision making. *Neural Computing & Applications*, (2016). doi:10.1007/s00521-016-2479-1.
30. S. Pramanik, P. P. Dey, B. C. Giri, and F. Smarandache. Bipolar neutrosophic projection based models for solving multi-attribute decision making problems. *Neutrosophic Sets and Systems*, 15 (2017), 74-83.
31. T. Mahmood, J. Ye, and Q. Khan, Bipolar interval neutrosophic set and its application in multicriteria decision making. <https://archive.org/details/BipolarIntervalNeutrosophicSet>. Retrieved on October 9, 2017.
32. I. Deli, Y. A. Subas, F. Smarandache, and M. Ali. Interval valued bipolar neutrosophic sets and their application in pattern recognition. <https://www.researchgate.net/publication/289587637>. Retrieved on October 9, 2017.
33. S. Pramanik, P. P. Dey, F. Smarandache, and J. Ye. Cross entropy measures of bipolar and interval bipolar neutrosophic sets and their application for multi-attribute decision making. *Axioms*, 7 (2018), 1-24. doi: 10.3390/axioms7020021.
34. J. Ye. Similarity measures between interval neutrosophic sets and their applications in multicriteria decision-making. *Journal of Intelligent and Fuzzy Systems*, 26 (1) (2014), 165-172. doi: 10.3233/IFS-120724.
35. P. P. Dey, S. Pramanik, and B. C. Giri. Multi-criteria group decision making in intuitionistic fuzzy environment based on grey relational analysis for weaver selection in khadi institution. *Journal of Applied and Quantitative Methods*, 10 (4) (2015), 1-14.
36. P. P. Dey, S. Pramanik, and B. C. Giri. An extended grey relational analysis based interval neutrosophic multi-attribute decision making for weaver selection. *Journal of New Theory*, (9) (2015), 82-93.
37. P. P. Dey, S. Pramanik, and B.C. Giri. Extended projection based models for solving multiple attribute decision making problems with interval valued neutrosophic information. In F. Smarandache, & S. Pramanik (Eds.), *New Trends in Neutrosophic Theory and Applications*. Pons Edition, Brussels, 2016, 127-140.
38. L. Shi. Correlation coefficient of simplified neutrosophic sets for bearing fault diagnosis. *Shock and Vibration*, 2016 (2016), Article ID 5414361. doi: 10.1155/2016/5414361.
39. K. Mondal, S. Pramanik, and F. Smarandache. Intuitionistic fuzzy multi-criteria group decision making approach to quality-brick selection problem. *Journal of Applied and Quantitative Methods*, 9(2) (2014), 35-50.
40. K. Mondal, and S. Pramanik. Neutrosophic decision making model for clay-brick selection in construction field based on grey relational analysis. *Neutrosophic Sets and Systems*, 9 (2015), 72-79.
41. K. Mondal, S. Pramanik, and F. Smarandache. Role of neutrosophic logic in data mining. In F. Smarandache, & S. Pramanik (Eds.), *New Trends in Neutrosophic Theory and Application*. Pons Editions, Brussels, 2016, 15-23.
42. S. Pramanik, S. Dalapati, and T. K. Roy. Logistics center location selection approach based on neutrosophic multi-criteria decision making. In F. Smarandache, & S. Pramanik (Eds.), *New Trends in Neutrosophic Theory and Application*. Pons Editions, Brussels, 2016, 161-174.
43. S. Pramanik, S. Dalapati, and T. K. Roy. Neutrosophic multi-attribute group decision making strategy for logistic center location selection. In F. Smarandache, M. A. Basset & V. Chang (Eds.), *Neutrosophic Operational Research*, Vol. III. Pons Asbl, Brussels, 2018, 13-32.
44. K. Mondal, and S. Pramanik. Neutrosophic decision making model of school choice. *Neutrosophic Sets and Systems*, 7 (2015), 62-68.
45. S. Pramanik, P. P. Dey, and B. C. Giri. TOPSIS for single valued neutrosophic soft expert set based multi-attribute decision making problems. *Neutrosophic Sets and Systems*, 10 (2015), 88-95.
46. K. Mondal, and S. Pramanik. Multi-criteria group decision making approach for teacher recruitment in higher education under simplified neutrosophic environment. *Neutrosophic Sets and Systems*, 6 (2014), 28-34.
47. S. Pramanik, and D. Mukhopadhyaya. Grey relational analysis based intuitionistic fuzzy multi criteria group decision-making approach for teacher selection in higher education. *International Journal of Computer Applications*, 34(10) (2011), 21-29.
48. Abdel-Basset, M., Mohamed, M., Zhou, Y., & Hezam, I. (2017). Multi-criteria group decision making based on neutrosophic analytic hierarchy process. *Journal of Intelligent & Fuzzy Systems*, 33(6), 4055-4066.

**Received** : February 9, 2018. **Accepted** : March 26, 2018.