

2-1-2021

Core-binding Factor Acute Myeloid Leukemia with Inv(16): Older Age and High White Blood Cell Count are Risk Factors for Treatment Failure

Celalettin Ustun

Division of Hematology, Oncology and Cellular Therapy, Rush University, Chicago, IL, USA; Division of Hematology, Oncology and Transplantation, Department of Medicine, University of Minnesota, Minneapolis, MN, USA

Elizabeth A. Morgan

Department of Pathology, Brigham and Women's Hospital, Harvard Medical School, Boston, MA, USA

Ethan M. Ritz

Rush Bioinformatics and Biostatistics Core, Rush University, Chicago, IL, USA

Hanne Vestergaard

Department of Hematology, Odense University Hospital, Odense, Denmark

Sheeja Pullarkat

Department of Pathology, University of California, Los Angeles, CA, USA [disc_path_pubs](#)

Recommended Citation

[See next page for additional authors](#)

Ustun C, Morgan EA, Ritz EM, Vestergaard H, Pullarkat S, Kluin PM, Ohgami R, Baughn LB, Kim Y, Ku NK, Czuchlewski D, Boe Møller M, Schiefer AI, Mrózek K, Horny HP, George TI, Kielsgaard Kristensen T, Beck T, Nathan S, Arana Yi C, Yeung C, Pullarkat V, Gotlib J, Akin C, Kohlschmidt J, Salhotra A, Soma L, Chen D, Han SY, Cho C, Sperr W, Broesby-Olsen S, Linden MA, Dolan M, Hoermann G, Hornick JL, Bloomfield C, Nakamura R, Joachim Deeg H, Litzow MR, Borthakur G, Weisdorf D, Huls G, Perales MA, Valent P, Marcucci G. Core-binding factor acute myeloid leukemia with inv(16): Older age and high white blood cell count are risk factors for treatment failure. *Int J Lab Hematol*. 2021 Feb;43(1):e19-e25. doi: 10.1111/ijlh.13338. Epub 2020 Sep 14. PMID: 32926565; PMCID: PMC8434847.

Authors

Celalettin Ustun, Elizabeth A. Morgan, Ethan M. Ritz, Hanne Vestergaard, Sheeja Pullarkat, Philip M. Kluin, Robert Ohgami, Linda B. Baughn, Young Kim, Nam K. Ku, David Czuchlewski, Michael Boe Møller, Ana-Iris Schiefer, Krzysztof Mrózek, Hans-Peter Horny, Tracy I. George, Thomas Kiesgaard Kristensen, Todd Beck, Sunita Nathan, Cecilia Arana Yi, Cecilia Yeung, Vinod Pullarkat, Jason Gotlib, Cem Akin, Jessica Kohlschmidt, Amandeep Salhotra, Lori Soma, Dong Chen, Se Y. Han, Christina Cho, Wolfgang Sperr, Sigurd Broesby-Olsen, Michael A. Linden, Michelle Dolan, Gregor Hoermann, Jason L. Hornick, Clara Bloomfield, Ryo Nakamura, H Joachim Deeg, Mark R. Litzow, Gautam Borthakur, Daniel Weisdorf, Gerwin Huls, Miguel-Angel Perales, Peter Valent, and Guido Marcucci

LETTER TO THE EDITOR

Core-binding factor acute myeloid leukemia with inv(16): Older age and high white blood cell count are risk factors for treatment failure

Dear Editors:

The core-binding factor (CBF) and acute myeloid leukemias (AML) are considered a distinct subgroup of AML due to similar molecular pathogenesis and clinical features.¹ The two forms of CBF-AML have rearrangements t(8;21)(q22;q22.1) [t(8;21)] and inv(16)(p13.1q22) or t(16;16)(p13.1;q22) [inv(16)] which result in the fusion genes *RUNX1/RUNX1* and *CBFB/MYH11*, respectively. Although survival of CBF-AML is superior than other subtypes of AML, relapse occurs in approximately 30%-40% of patients.¹⁻⁴ Finding risk factors for treatment failure (eg, relapse or death) may be useful to manage patients individually. However, the relative rarity of CBF-AML (approximately 15%-20% of AML cases) and its relatively good prognosis has confounded these efforts.^{2,3} Moreover, recent studies clearly indicate each CBF-AML is a distinct disease regarding patient and disease characteristics,²⁻⁵ and should be evaluated separately. We previously published a scoring system (I-CBFit) for treatment failure for t(8;21),⁶ now here we present our analysis for inv(16).

Eleven US and Europe centers collected data on 550 patients with CBF-AML; 290 patients had inv(16). Inclusion criteria were as follows: (a) AML patients with inv(16), t(16;16), or *CBFB/MYH11* by fluorescence in situ hybridization confirmed by the reporting institutions; (b) cases diagnosed between July 1996 and January 2017, (c) diagnostic or at least postinduction bone marrow sample was available for review in the participating institution's pathology department. Data were uniformly collected using a predesigned data spreadsheet. The data forms included the following: patient characteristics (age, sex, and race); disease characteristics [date of diagnosis, white blood cell count (WBC) at diagnosis ($\times 10^9/L$), cytogenetics, *KIT* D816V mutational status, primary or secondary AML]; hematopoietic cell transplantation (HCT) (autologous HCT or allogeneic HCT (alloHCT), donor type, remission status at HCT); and events (relapse, death, or alive at last contact). Deidentified patient data were transferred to the University of Minnesota where the main database was created and managed. This study was approved by the Institutional Review Board: Human Subjects Committee at the University of Minnesota.

Secondary AML was assigned if a patient had a history of chemotherapy/radiation therapy for a malignancy and/or had a history of preleukemic neoplastic bone marrow disease. The presence of 46 chromosomes in one clone or each clone was defined

TABLE 1 Characteristics of patients with inv(16) achieving CR

Variable	Total
n	264
Age (median [range])	49 [5-78]
Sex, n (%)	
Female	129 (48.9)
Male	117 (44.3)
Missing	18 (6.8)
WBC at Diagnosis ($10^9/L$) (median [range])	21.30 [1-373]
Missing n (%)	5 (1.9)
AML type, n (%)	
Primary	219 (83.0)
Secondary	32 (12.1)
Missing	13 (4.9)
Chromosome 4 abnormalities, n (%)	
No	243 (92.0)
Yes	5 (1.9)
Missing	16 (6.1)
Chromosome 5 or 7 abnormalities, n (%)	
No	233 (88.3)
Yes	15 (5.7)
Missing	16 (6.1)
+8, n (%)	
No	212 (80.3)
Yes	36 (13.6)
Missing	16 (6.1)
Chromosome 9 abnormalities, n (%)	
No	243 (92.0)
Yes	5 (1.9)
Missing	16 (6.1)
+22, n (%)	
No	208 (78.8)
Yes	40 (15.2)
Missing	16 (6.1)

(Continues)

TABLE 1 (Continued)

Variable	Total
-X,n (%)	
No	245 (92.8)
Yes	3 (1.1)
Missing	16 (6.1)
-Y,n (%)	
No	239 (90.5)
Yes	9 (3.4)
Missing	16 (6.1)
Number of chromosomes, n (%)	
<46	6 (2.3)
=46	180 (68.2)
>46	62 (23.5)
Missing	16 (6.1)
KIT D816V mutation, n (%)	
Negative	135 (51.1)
Positive	29 (11.0)
Missing	100 (37.9)
AlloHCT, n (%)	92 (34.8)
Disease status at alloHCT, n (%)	
No CR	7 (7.7)
CR1	28 (30.8)
CR2	54 (59.3)
>CR2	1 (1)
Missing	2 (2)
Relapsed within 2 y (%) in CR1	91 (34.5)
Nonrelapse mortality within 2 y in CR1, n (%)	15 (5.7)
EFS duration, months (median)	25.5
DFS duration, months (median)	29.5
OS duration, months (median)	Not reached

Abbreviations: AlloHCT, allogeneic hematopoietic cell transplantation; CR, complete remission; DFS, disease-free survival; EFS, event-free survival; OS, overall survival; WBC, white blood cell count.

as pseudodiploidy (due to inversion or t(16;16) it was not named diploidy), and if the chromosome number was higher or lower than 46 chromosomes in any clone (in patients with more than one clone) it was defined as hyperdiploidy and hypodiploidy, respectively. Event-free survival (EFS) was defined as the time from diagnosis to relapse, death from any cause, or failure to achieve complete remission. Disease-free survival (DFS) was defined as the time from complete remission to relapse or death from any cause. Overall survival (OS) was defined as the time from diagnosis to last follow-up alive or date of death of any cause. We described patients' characteristics using the median and range for continuous variables, and frequency and percentage for categorical variables. All patients were included EFS and OS analyses, but subjects who did not achieve complete remission (CR) were excluded from DFS analysis. Subjects that were censored before 2 years of follow-up were considered to be missing for the primary outcome. Covariates considered for inclusion were sex, age, race, primary or secondary AML, WBC at diagnosis, +22, +8, and diploid status. Other chromosome abnormalities (4, 5, 7, 9, X, Y) were not considered for the prognostic model due to their rarity in our sample. KIT mutations were not included due to too many with missing data. Missing data were imputed with multivariate Imputation by Chained Equations in R. Twenty-five imputed datasets were generated. Stepwise model selection based on Akaike Information Criterion was performed on each imputed dataset. Covariates that were selected in at least half of the imputed datasets were included in the final model. Parameter estimates and standard errors were computed according to Rubin's rules. A Cox proportional hazards model was initially used to investigate the effects of age, sex, WBC at diagnosis, +8, +22, and hyperdiploidy on EFS. An event was defined as either relapse, death, or treatment failure (defined as not achieving CR at 30 days after diagnosis). Patients were considered to be censored if they were lost to follow-up or received alloHCT in CR1. When it was found that age and WBC were the only significant predictors, cutoff values were determined to group patients into high- and low-risk categories. Models for DFS and OS were also

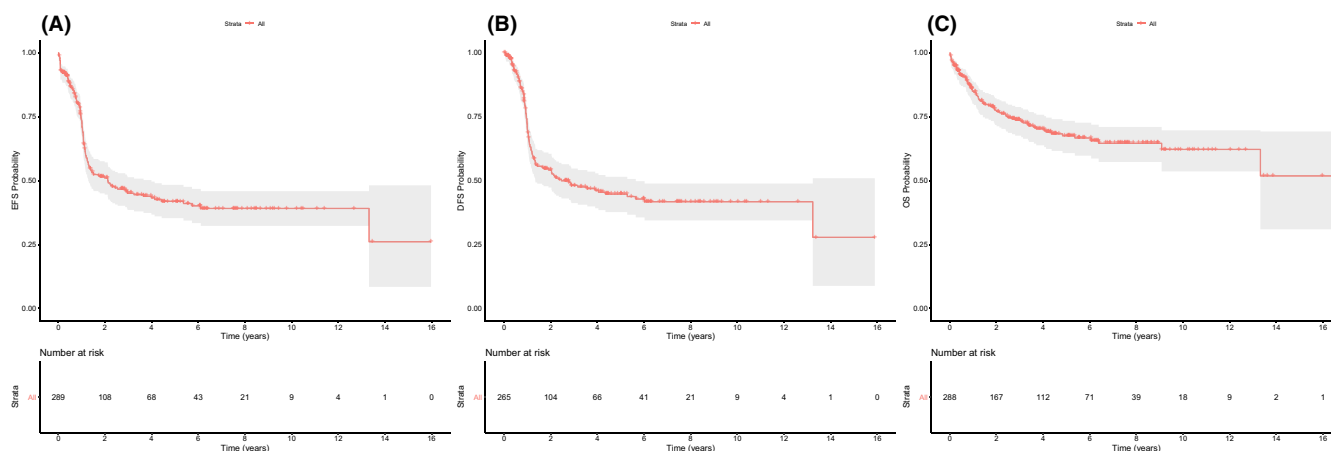
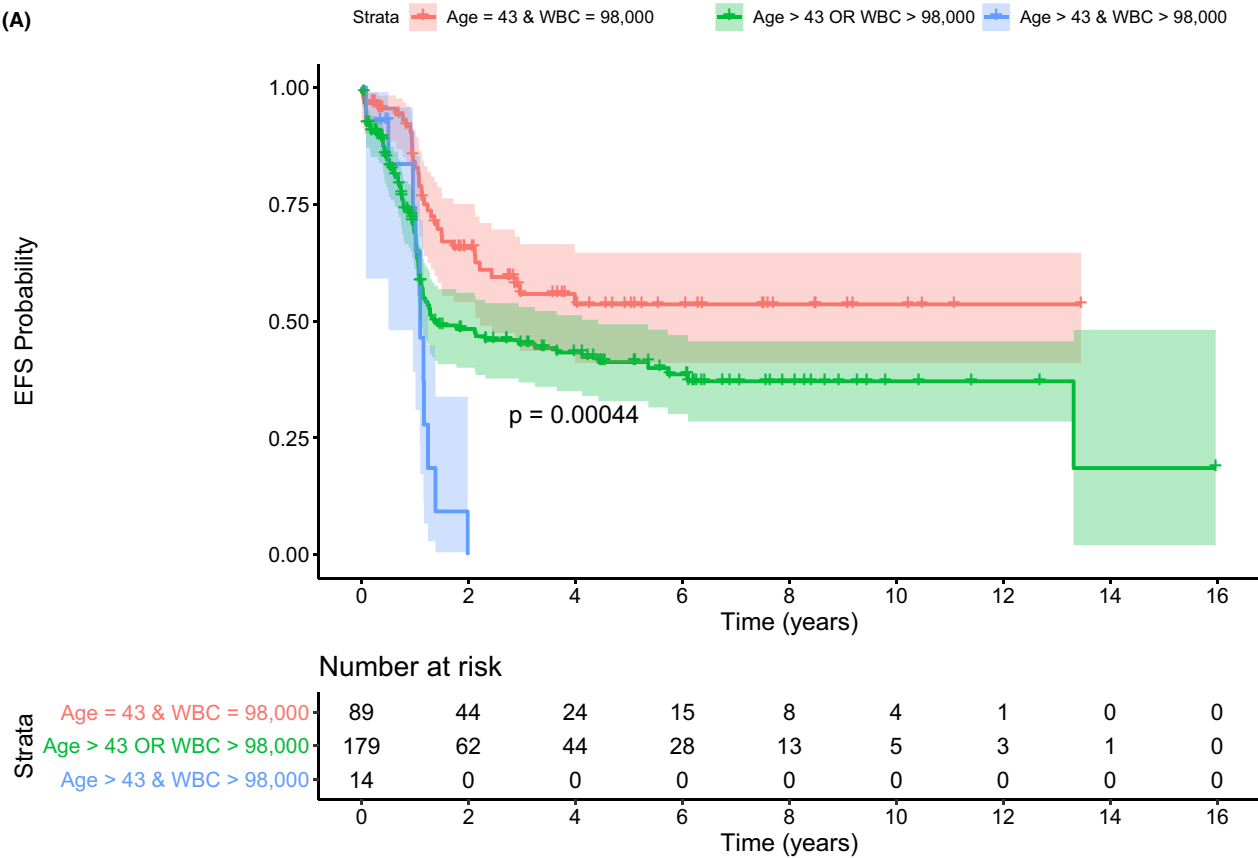


FIGURE 1 EFS (A), DFS (B), and OS (C) in patients with inv(16) [Colour figure can be viewed at wileyonlinelibrary.com]

(A)



(B)

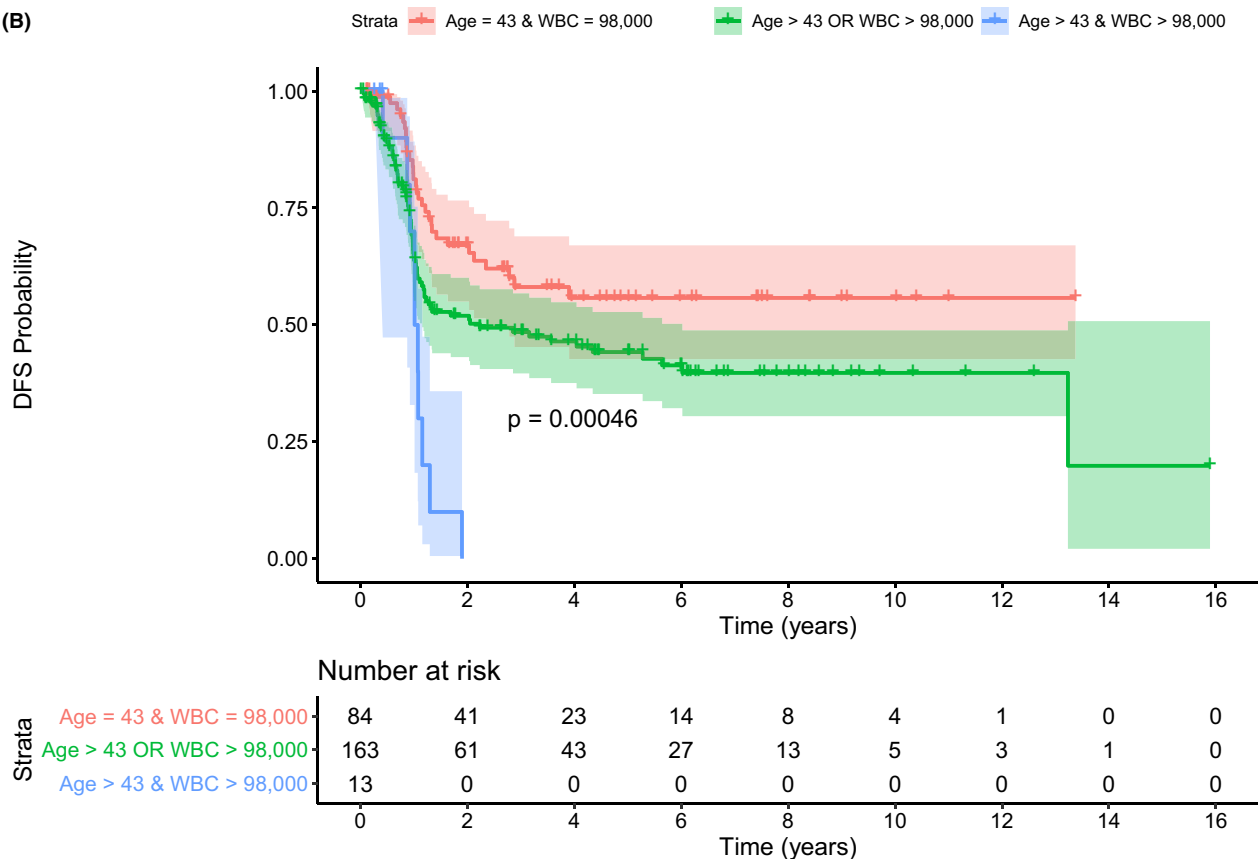


FIGURE 2 (Continued)

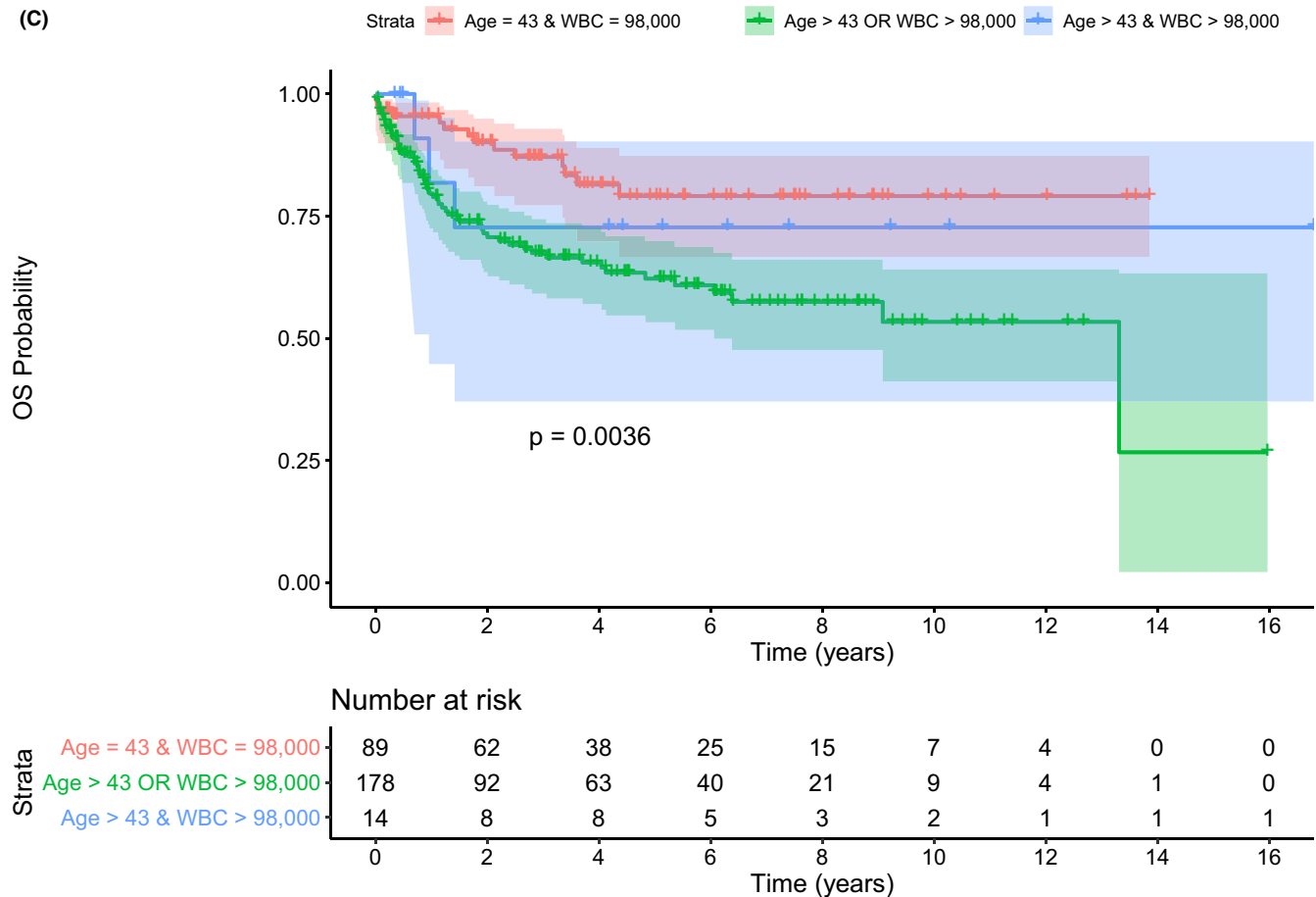


FIGURE 2 EFS (A), DFS (B), and OS (C) were shown among patients with no (age ≤ 43 y and WBC $\leq 98 \times 10^9/L$), 1 (age ≤ 43 y or WBC $\leq 98 \times 10^9/L$) and 2 risk factors (age > 43 y and WBC $> 98 \times 10^9/L$)

computed. Separately for age and WBC, a ROC curve was generated for EFS for generated at 2 years after diagnosis using the survivalROC package in R. Cutoff points were chosen to maximize the Youden Index (Specificity + Sensitivity - 1). Kaplan-Meier curves and log-rank test were used for survival analyses in patients who had known diagnostic WBC and age ($n = 282$).

Of the 290 patients with inv16 (median age of 49 years), 264 achieved CR1 (Table 1). The most common additional cytogenetic abnormalities were +8 and +22. Hyperdiploidy (23.5%) was more frequent. *KIT* D816V mutation was present in 17.7% of tested patients.

Relapse or death occurred in 106 patients (40.2%) within 2 years after CR1 at a median of 10.7 months (range 0.8 to 22.8 months). The median EFS and DFS were 25.5 and 29.5 months, respectively while OS was not reached. (Table 1 and Figure 1). In multivariate analysis (MVA) for survival at 2-year, older age (≥ 43 years) was associated with inferior EFS [Hazard ratio (HR): 1.017, 95% Confidence Interval (CI): (1.007-1.028), $P = .0014$], DFS [HR: 1.014, 95% CI (1.003-1.026), $P = .0123$], and OS [HR: 1.034, 95% CI (1.018-1.049), $P = .00002$]. Higher white blood cell counts (WBC $\geq 98 \times 10^9/L$) were associated with a poorer EFS [HR: 1.005, 95% CI (1.002-1.008), $P = .0003$] and DFS [HR: 1.0006, 95% CI (1.004-1.009), $P = .0001$], but not with OS [HR: 1.000 95% CI (0.995-1.005), $P = .958$].

Patients stratified by age and WBC into three groups (age ≤ 43 years and WBC $\leq 98 \times 10^9/L$ vs age ≤ 43 years or WBC $\leq 98 \times 10^9/L$ vs age > 43 years and WBC $> 98 \times 10^9/L$). Regarding EFS, younger patients with a lower WBC (no risk group, age ≤ 43 years and WBC $\leq 98 \times 10^9/L$) did not reach median survival whereas those with 1 risk (age ≤ 43 years or WBC $\leq 98 \times 10^9/L$) and patients with 2 risks (age > 43 years and WBC $> 98 \times 10^9/L$) had a median of EFS of 16.3 months and 13.1 months, respectively, $P = .00044$ (Figure 2A). Regarding DFS, patients with no risk did not reach median survival whereas those with 1 risk and those 2 risks (age > 43 years and WBC $> 98 \times 10^9/L$) had a median DFS of 26.8 months and 12.5 months, respectively, $P = .00046$ (Figure 2B). Regarding OS, patients with no risk or with both risks did not reach median survival whereas those with 1 risk had a median OS of 160 months, $P = .0036$ (Figure 2C).

Although this multicenter study had limitations (due to retrospective in nature and thus missing detailed molecular data and no data on minimal residual disease), the data from a large number of patients with long-term follow-up allowed us to identify clear risk factors for treatment failure; older patients and higher WBC counts. Hoyos et al also showed that higher WBC count ($> 20 \times 10^9/L$) had higher relapse at 5-year (40% vs

16%, $P = .001$) in 150 patients with CBF-AML (76 with CBF-MYH11).⁷ When patients were stratified by age and WBC (age >50 years and WBC > $20 \times 10^9/L$), similar to our results, patients who had no risk factor had a superior 5-year OS (80%). Other studies have also supported that WBC (one defined it similar to ours, $100 \times 10^9/L$) is associated with poor DFS, mainly due to increased relapse.^{8,9} Pashka et al reported that patients with higher WBC had decreased DFS (HR = 1.33, $P = .02$) and more mutated *KIT* and *FLT3*.⁸ De Jonge et al showed low WBC ($<20 \times 10^9/L$) was associated with a higher CR rate ($P = .024$), improved EFS (median 77.2 vs 9.7 months) and improved OS (median 85.5 vs 28.9 months, $P = .001$) in favorable prognostic AML.¹⁰ Delauney et al found that older aged (>36 years), +22, and severe thrombocytopenia ($<30 \times 10^9/L$) were associated with poor DFS in 110 patients with inv(16).¹¹ In MVA, age was the only risk factor for poor DFS. The impact of +22 on survival is conflicting^{2,3,8,11} and might be more prominent in patients with lower WBC.³

A *KIT* mutation (exons 8-13 & 17), present in up to 37% of patients, was associated with poor prognosis for survival in CBF-AML.^{4,8} *KIT* mutations seem to have an impact in patients with t(8;21), but not in those with inv16.^{6,12} However, in the current study of patients with inv16, *KIT* mutations could not be tested due to excessive missing data. Similar to our findings, complex karyotype^{2,5,11} and secondary AML did not have effect in treatment failure.¹³

Prospective studies are warranted to improve survival in older inv(16) patients with a higher WBC at diagnosis.

ACKNOWLEDGEMENTS



Dr Bloomfield unexpectedly, unfortunately passed away during the preparation of the final manuscript.

CONFLICT OF INTEREST

The authors have no conflict of interest relevant to the study to disclose.

AUTHOR CONTRIBUTIONS

CU conceived the idea, collected data, analyzed data, searched literature, wrote the manuscript, and edited the manuscript. ER and TB involved in execution of data analysis, writing and editing article. CA, PV, JG, HJD, and DW conceived the idea, writing and editing the manuscript. TG and H-PH involved in pathologic examination of BMs as needed, identifying patients, data collection, wrote the manuscript, and edited the manuscript. KM involved in cytogenetic confirmation, writing and editing the manuscript. EAM, SP, YK, RO, HV, CY, CAY, ML, SN, JLH, TKK, LS, LBB, MBM, WS, VP, NKK, DC, VP, AR, SK, GH, CDB, JK, GM, GB, CB, CC, JK, MRL, MAP, AS, RN, SYH, SBO, and A-IS involved in identifying patients, data collection, wrote the manuscript, and edited the manuscript.

Celalettin Ustun^{1,2} 
Elizabeth A. Morgan³ 

Ethan M Ritz⁴
Hanne Vestergaard⁵
Sheeja Pullarkat⁶
Philip M. Kluin⁷
Robert Ohgami⁸
Linda B. Baughn⁹
Young Kim¹⁰
Nam K. Ku⁶
David Czuchlewski¹¹
Michael Boe Møller^{5,12,13}
Ana-Iris Schiefer¹⁴
Krzysztof Mrózek¹⁵
Hans-Peter Horny¹⁶
Tracy I. George^{11,17} 
Thomas Kielsgaard Kristensen^{12,18}
Todd Beck⁴
Sunita Nathan¹
Cecilia Arana Yi¹¹
Cecilia Yeung^{19,20}
Vinod Pullarkat²¹ 
Jason Gotlib²²
Cem Akin²³
Jessica Kohlschmidt^{15,24}
Amandeep Salhotra¹⁰
Lori Soma²⁰ 
Dong Chen⁹
Se Y. Han²
Christina Cho^{25,26}
Wolfgang Sperr²⁷ 
Sigurd Broesby-Olsen^{13,28}
Michael A. Linden²⁹
Michelle Dolan²⁹
Gregor Hoermann³⁰
Jason L Hornick³ 
Clara Bloomfield¹⁵
Ryo Nakamura²¹
H. Joachim Deeg^{19,20}
Mark R. Litzow³¹ 
Gautam Borthakur³² 
Daniel Weisdorf²
Gerwin Huls³³
Miguel-Angel Perales²⁶
Peter Valent²⁷
Guido Marcucci²¹

¹Division of Hematology, Oncology and Cellular Therapy, Rush University, Chicago, IL, USA

²Division of Hematology, Oncology and Transplantation, Department of Medicine, University of Minnesota, Minneapolis, MN, USA

³Department of Pathology, Brigham and Women's Hospital, Harvard Medical School, Boston, MA, USA

- ⁴Rush Bioinformatics and Biostatistics Core, Rush University, Chicago, IL, USA
- ⁵Department of Hematology, Odense University Hospital, Odense, Denmark
- ⁶Department of Pathology, University of California, Los Angeles, CA, USA
- ⁷Department of Pathology and Medical Biology, University Medical Center Groningen, University of Groningen, Groningen, The Netherlands
- ⁸Department of Pathology, Stanford University, Stanford, CA, USA
- ⁹Department of Laboratory Medicine and Pathology, Mayo Clinic, Rochester, MN, USA
- ¹⁰Department of Pathology, City of Hope National Medical Center, Duarte, CA, USA
- ¹¹Department of Pathology, University of New Mexico, Albuquerque, NM, USA
- ¹²Department of Pathology, Odense University Hospital, Odense, Denmark
- ¹³Mastocytosis Center Odense University Hospital, Odense, Denmark
- ¹⁴Department of Pathology, Medical University of Vienna, Vienna, Austria
- ¹⁵The Ohio State University Comprehensive Cancer Center, Columbus, OH, USA
- ¹⁶Institute of Pathology, Ludwig-Maximilians-University, Munich, Germany
- ¹⁷Department of Pathology, University of Utah, Salt Lake City, UT, USA
- ¹⁸Mastocytosis Center, Odense University Hospital, Odense, Denmark
- ¹⁹Fred Hutchinson Cancer Research Center, Seattle, WA, USA
- ²⁰University of Washington School of Medicine, Seattle, WA, USA
- ²¹Division of Hematology and HCT, City of Hope, Duarte, CA, USA
- ²²Stanford Cancer Institute, School of Medicine, Stanford University, Stanford, CA, USA
- ²³Division of Allergy and Clinical Immunology, University of Michigan, Ann Arbor, MI, USA
- ²⁴Alliance Statistics and Data Center, The Ohio State University Comprehensive Cancer Center, Columbus, OH, USA
- ²⁵Department of Medicine, Adult Bone Marrow Transplant Service, Memorial Sloan Kettering Cancer Center, New York, NY, USA
- ²⁶Department of Medicine, Weill Cornell Medical College, New York, NY, USA
- ²⁷Department of Internal Medicine I, Division of Hematology & Hemostaseology and Ludwig Boltzmann Institute for Hematology and Oncology, Medical University of Vienna, Vienna, Austria
- ²⁸Department of Dermatology and Allergy Centre, Odense Research Center for Anaphylaxis, Odense, Denmark
- ²⁹Department of Laboratory Medicine and Pathology, University








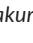

of Minnesota, Minneapolis, MN, USA

- ³⁰Division of Medical and Chemical Laboratory Diagnostics - Department of Laboratory Medicine, Medical University of Vienna, Vienna, Austria
- ³¹Department of Internal Medicine and Division of Hematology, Mayo Clinic, Rochester, MN, USA
- ³²Department of Leukemia, University of Texas M.D. Anderson Cancer Center, Houston, TX, USA
- ³³Department of Hematology, University Medical Center Groningen, University of Groningen, Groningen, The Netherlands

Correspondence

Celalettin Ustun, Division of Hematology Oncology and Cellular Therapy, Department of Medicine, Rush University, 1725 W Harrison St, Suite 340, Chicago, IL 60612, USA.
Email: celalettin_ustun@rush.edu

ORCID

- Celalettin Ustun  <https://orcid.org/0000-0001-6896-6213>
- Elizabeth A. Morgan  <https://orcid.org/0000-0001-5880-9337>
- Tracy I. George  <https://orcid.org/0000-0001-5478-7847>
- Vinod Pullarkat  <https://orcid.org/0000-0001-9129-3424>
- Lori Soma  <https://orcid.org/0000-0003-0606-899X>
- Wolfgang Sperr  <https://orcid.org/0000-0003-3288-8027>
- Jason L Hornick  <https://orcid.org/0000-0001-6475-8345>
- Mark R. Litzow  <https://orcid.org/0000-0002-9816-6302>
- Gautam Borthakur  <https://orcid.org/0000-0001-7679-6453>

REFERENCES

1. Ustun C, Marcucci G. Emerging diagnostic and therapeutic approaches in core binding factor acute myeloid leukaemia. *Curr Opin Hematol*. 2015;22:85-91.
2. Marcucci G, Mrozek K, Ruppert AS, et al. Prognostic factors and outcome of core binding factor acute myeloid leukemia patients with t(8;21) differ from those of patients with inv(16): a Cancer and Leukemia Group B study. *J Clin Oncol*. 2005;23:5705-5717.
3. Schlenk RF, Benner A, Krauter J, et al. Individual patient data-based meta-analysis of patients aged 16 to 60 years with core binding factor acute myeloid leukemia: a survey of the German Acute Myeloid Leukemia Intergroup. *J Clin Oncol*. 2004;22:3741-3750.
4. Duployez N, Marceau-Renaut A, Boissel N, et al. Comprehensive mutational profiling of core binding factor acute myeloid leukemia. *Blood*. 2016;127:2451-2459.
5. Mosna F, Papayannidis C, Martinelli G, et al. Complex karyotype, older age, and reduced first-line dose intensity determine poor survival in core binding factor acute myeloid leukemia patients with long-term follow-up. *Am J Hematol*. 2015;90:515-523.
6. Ustun C, Morgan E, Moodie EEM, et al. Core-binding factor acute myeloid leukemia with t(8;21): Risk factors and a novel scoring system (I-CBfit). *Cancer Med*. 2018;7:4447-4455.
7. Hoyos M, Nomdedeu JF, Esteve J, et al. Core binding factor acute myeloid leukemia: the impact of age, leukocyte count, molecular findings, and minimal residual disease. *Eur J Haematol*. 2013;91:209-218.
8. Paschka P, Du J, Schlenk RF, et al. Secondary genetic lesions in acute myeloid leukemia with inv(16) or t(16;16): a study of the German-Austrian AML Study Group (AML SG). *Blood*. 2013;121:170-177.
9. Martin G, Barragan E, Bolufer P, et al. Relevance of presenting white blood cell count and kinetics of molecular remission in the

- prognosis of acute myeloid leukemia with CBFbeta/MYH11 rearrangement. *Haematologica*. 2000;85:699-703.
10. de Jonge HJ, Valk PJ, de Bont ES, et al. Prognostic impact of white blood cell count in intermediate risk acute myeloid leukemia: relevance of mutated NPM1 and FLT3-ITD. *Haematologica*. 2011;96:1310-1317.
 11. Delaunay J, Vey N, Leblanc T, et al. Prognosis of inv(16)/t(16;16) acute myeloid leukemia (AML): a survey of 110 cases from the French AML Intergroup. *Blood*. 2003;102:462-469.
 12. Kawashima N, Ishikawa S, Atsuta Y, et al. Prospective evaluation of prognostic relevance of KIT mutations in core-binding factor acute myeloid leukemia: results from the JALSG CBF-AML209-KIT Study. *Blood*. 2018;132:438.
 13. Seymour JF, Juneja SK, Campbell LJ, et al. Secondary acute myeloid leukemia with inv(16): report of two cases following paclitaxel-containing chemotherapy and review of the role of intensified ara-C therapy. *Leukemia*. 1999;13:1735-1740.