

8-8-1918

## Belen News, 08-08-1918

The News Printing Co.

Follow this and additional works at: [https://digitalrepository.unm.edu/belen\\_news](https://digitalrepository.unm.edu/belen_news)

---

### Recommended Citation

The News Printing Co.. "Belen News, 08-08-1918." (1918). [https://digitalrepository.unm.edu/belen\\_news/208](https://digitalrepository.unm.edu/belen_news/208)

This Newspaper is brought to you for free and open access by the New Mexico Historical Newspapers at UNM Digital Repository. It has been accepted for inclusion in Belen News, 1913-1921 by an authorized administrator of UNM Digital Repository. For more information, please contact [disc@unm.edu](mailto:disc@unm.edu).

# THE BELEN NEWS

## The Bean Beetle or Chinche

(Epilachna Currupta Muls.)

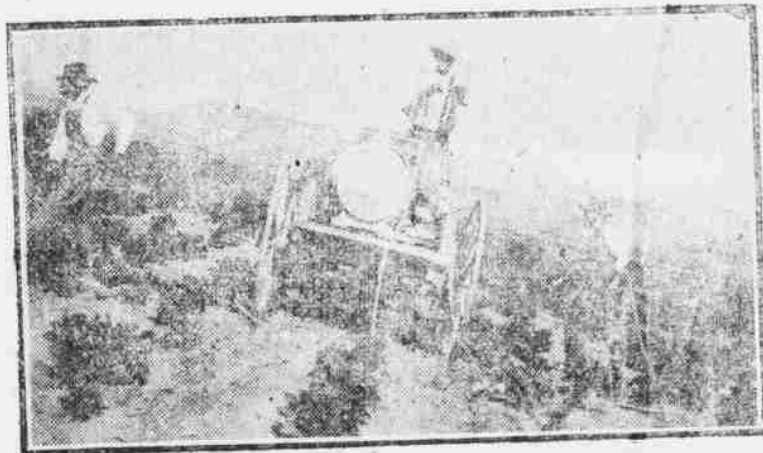
By R. R. Conroy, County Agent.

The Bean Beetle or Chinche, is the most injurious insect attacking the Bean in New Mexico. Yearly damage is estimated in various localities from 50 per cent to the entire crop. This specie confines its attack to the Bean.

Injury may be reduced to a minimum by cooperation in the use of preventative methods and by remedial methods.

There are two broods of the Bean Beetle each year in the southern part of New Mexico. The Adults hibernate. In all stages the insect may be found upon the Bean plant. Average time necessary for the development from eggs to adult is 25 days approximately.

Since the Bean is one of the most important crops of New Mexico, and is destined to become probably the leading crop it is well for all growers to be fully acquainted with this pest.



A Hand-Power Bean Spraying machine in operation to avoid their damage.

### Description of Adults And Young;

The adults are sub-hemispherical in shape. The ground color of the bean Beetle is orange brown, with eight black spots on each wing cover, and average about 1-4 of an inch in length.

The young are spiny, yellow, worm-like creatures, varying in size from 1-16 of an inch when hatched to about 5-16 of an inch when growth is completed. The young or larvae have no wings, and so have to travel on foot. Unless one, has taken care to

learn the facts the adult beetle will not be credited with being the parent of these worms or young which eat so voraciously.

### Nature and Extent of Injury.

Injury to the Bean Plants occurs, by having its leaves eaten or skeletonized by the adult beetle or Larvae. The Beetle are not responsible for so great a share of the injury to the leaves as are the young. The adults usually feed by eating a hole entirely through the leaf, rarely the whole leaf being destroyed by them. The voracious young, or larvae, feed on the underside of the leaf, in colonies when they are young, and scatter later. When numerous they eat off the lower epidermis and all the green substance of the central layers of the leaf. After this has happened the leaf appears skeletonized and dried up. The growth of a plant may be checked or stopped, and the young bean pods may be attacked and holes eaten in their sides and an occasional flower eaten.

vere manifestation may be expected, where crop remnants, weeds a piles of rubbish have been allowed to remain in, or near the land which is planted to beans the following year. Damage seems to be greater where beans have followed beans year after year, and where clean cultural methods and cultivation are not followed.

### Control Measures

It appears that by using preventative measures, and employing good cultural methods, of row planting and frequent cultivations and the judicious use of irrigation water, that a reasonable amount of the present damage can be avoided, without dependence upon the Arsenate of Lead Spray. Clean fields and fall plowing will lessen the number of beetles that survive the hibernation period. Rotation of crops should also be practiced diligently in this connection.

### Beetle Hand-Picking.

On a small patch of beans, damage may be prevented by picking the adult beetles and eggs off of the vines as they appear. In a large field this method would hardly be practicable.

### Remedial Measures.

Various sprays may be used, but the Arsenate of Lead Spray is advocated and recommended as being the best. This spray should be mixed at the rate of 2 pounds of Powdered Arsenate of Lead with fifty gallons of water, and applied with a good pressure of not less than 150 pounds. Angle nozzles of forty-five degrees should be used on the spraying equipment, and the spray material should be applied to the under-side of the bean leaves, where the beetle and larvae eat. A fine spray is necessary for economical use of material and for efficient covering of all leaves. For a small area of beans almost any type of sprayer will do, but for fields spray machine should be used where the pressure may be maintained at 150 pounds or more

and equiped with angle-nozzles and Row-attachments, if beans were planted straight and in properly spaced rows. The cost of Arsenate of Lead poison for spraying is comparatively small per acre, compared to the cost of labor required to apply it, hence row-planting of beans with a two-row planter is advocated, so that row attachments for spraying may be used. It requires from two to four lbs. of poison to spray an acre, depending upon the amount of foliage to be sprayed, and costing from \$1.50 to \$4 per acre total cost.

VALENCIA COUNTY has purchased and maintains for educational and demonstrational purposes four spraying machines which are available free of cost to all farmers of Valencia county. The county Agent is ready at all times to make arrangements for keeping the sprayers in use among the farmers, and to give demonstrations, on Bean spraying, etc. Which proposition applies to all farming propositions generally.

VALENCIA COUNTY farmers are requested to spray their beans and prevent damage from the Bean Beetle and larvae, thereby increasing their yield per acre putting more money in the farmers pocket and also at the same time increasing the food supply for our nation and our allies in allies in the war.

Respectfully submitted,  
R. S. CONROY,  
County Agricultural Agent,  
Valencia county,  
Los Lunas, New Mexico

## Commissioners Proceedings.

(Cont'd)

District No. 12.  
Bonifacio Montoya, penalty deducted.  
District No. 16.  
Bluewater Land & Irrigation Co. raise real estate, \$48,260.00.  
Jeanette L. Hill, penalty deducted.  
District No. 16.  
Manuel Arillanes, penalty deducted, exemption allowed.  
Esquipula Chavez, penalty deducted, exemption allowed.  
San Rafael Telephone Company assessed 2000.00.  
McKinley Land & Lumber Co. penalty deducted.  
District No. 18.

Serafina Chavez, assessment cancelled.

Veneranda O. Lopez, assessment cancelled.

Estate of Vacilio Montoya, assessment cancelled.

District No. 22.

Onofre Baca, penalty deducted.  
Melquiades Baldonado, penalty deducted.

Eusebio Carabajal, penalty deducted.

Lorenzo Gallegos, penalty deducted, exemption allowed.

Carlos Gallegos y Marquez, penalty deducted.

Ricardo Moya, penalty deducted.  
Donaciano Otero, penalty deducted, exemption allowed.

Maclovio Torrez, penalty deducted, exemption allowed.

Manuel Vigil, penalty deducted, exemption allowed.

The Board acting as a Board of County Commissioners referred a petition of various property owners of Precincts Nos. 2 and 3 to the District Attorney for his opinion as to whether the Board had any power to act upon same or not. Said petition being with reference to a certain public arroyo passing through said precincts which has been dammed by some of the property owners along the same.

The Board then adjourned until the following day June 6, 1918, at 9:30 a. m. and on said day and hour the Board of Equalization met pursuant to adjournment.

District No. 24.

In the matter of the appeal of the Naciones Land & Cattle Company the assessment by the assessor was sustained.

District No. 27.

Gavin G. Chavez, penalty deducted, exemption allowed.

Salvador Salas, assessment by assessor sustained.

District No. 28.

Jose Barreras, penalty deducted, exemption allowed.

Rafael Carillo, penalty deducted. (To be cont'd.)

### Public Notice of Delinquent Taxes.

The undersigned, Treasurer and Ex-Officio Collector of the County of Valencia, State of New Mexico, hereby gives notice that pursuant to the provisions of Chapter 80 of the laws of New Mexico, enacted at the third regular session of the Legislature of the State of New Mexico, he

shall on the thirty first of August 1918 apply to the District Court within and for the County of Valencia, in the State of New Mexico, for an order against any lands, real estate and personal property in which Taxes are delinquent and unpaid in an amount exceeding the sum of twenty five Dollars as shown by the tax rolls for the year 1917, and for an order to sell the same to satisfy said taxes; and that on the 28 day of September 1918, he will offer for sale at Public Auction to the highest and best bidder for cash at the front door of the Court House at Los Lunas in said County of Valencia, separately and in consecutive order each parcel of property upon which any taxes are delinquent and against which judgement has been rendered, for the amount of the taxes, costs and penalties due thereon, or so much thereof as may be necessary to realize the respective amounts due; And that at the date fixed for the sale of property upon which taxes in excess of twenty five dollars are delinquent he will proceed and offer for sale and sell at public auction to the highest and best bidder for cash, at the front door of the Court House at Los Lunas in said County of Valencia separately and in consecutive order, each parcel of property upon which taxes in the sum of twenty five Dollars or less are delinquent, as shown by the tax rolls of the year 1917, or so much thereof as may be necessary to realize the respective amounts due.

Eduardo M. Otero  
Treasurer and Ex-Officio  
Collector.

By R. Bohl, Dep.  
F. 7-11-18. L. 8-8-18.

### RESTORATION TO ENTRY OF LANDS IN NATIONAL FOREST.

Notice is hereby given that the lands described below, embracing 160 acres, within the Manzano National Forest, New Mexico, will be subject to settlement and entirely under the provisions of the homestead laws of the United States and the act of June 11, 1906 (34 Stat., 233), at the United States land office at Santa Fe, New Mexico, on August 1, 1918. Any settler who was actually and in good faith claiming any of said lands for agricultural purposes prior to January 1, 1906, and has not abandoned same, has a preference right to make homestead entry for the lands actually occupied. Said lands were listed upon the applications of the persons mentioned below, who have a preference right subject to the prior right of any such settler, provided such settler or applicant is qualified to make homestead entry and the preference right is exercised prior to August 24, 1918, on which date the lands will be subject to settlement and entry by any qualified person. The S1-2 SE 1-4 the S1-2 SW 1-4 Sec. 4, T. 10 N., R. 14 W., N. M. P. M., 160 acres, application of Mrs. Jos. B. Bond, Ramah, New Mexico; List 3-4081. June 19, 1918. C. M. Bruce, Assistant Commissioner of the General Land Office.

F. 7-4-18. L. 7-25-18.



**THE BELEN NEWS**  
PUBLISHING CO.  
Published weekly by  
THE HES-AND-AMERICAN  
PUBLISHING CO.

Editor and Director

Belen, New Mexico  
Subscription, \$2.00 per year.  
Sold by all news-vendors  
Official Paper Valencia Co.

Entered as second-class matter January 3, 1917,  
at the postoffice at Belen, New Mexico, under the  
Act of March 3, 1879.

No. 5597.

Report of the Condition of the  
**FIRST NATIONAL BANK**  
**OF BELEN,**  
At Belen, in the State of New  
Mexico, at the close of Busi-  
ness, June 29, 1918.

RESOURCES

Assets	
Real Estate	\$5,100.00
Loans	100,000.00
Notes and Accounts Receivable	100,000.00
Other Assets	100,000.00
<b>Total</b>	<b>305,100.00</b>

LIABILITIES

Capital stock paid in	\$25,000.00
Surplus fund	100,000.00
Undivided profits	40,000.00
Less current expenses	10,000.00
Current liabilities	10,000.00
Indebtedness subject to call	10,000.00
Certificates of Deposit	10,000.00
Cashier's checks outstanding	10,000.00
Other liabilities	10,000.00
<b>Total</b>	<b>305,100.00</b>

Subscribed and sworn to before me this  
6th day of July, 1918.  
Frieda C. Becker, Notary Public.  
My commission expires Jan. 1, 1921.

## Why Suffer?

Mrs. J. A. Cox, of Alderson, W. Va., writes: "My daughter... suffered terribly. She could not turn in bed... the doctors gave her up, and we brought her home to die. She had suffered so much at... time. Having heard of Cardui, we got it for her."

# CARDUI

The Woman's Tonic

"In a few days, she began to improve," Mrs. Cox continues, "and had no trouble at... Cardui cured her, and we sing its praises everywhere." We receive many thousands of similar letters every year, telling of the good Cardui has done for women who suffer from complaints so common to their sex. It should do you good, too. Try Cardui.

E-77

Subscribe for  
**The Belen News**

**Kirschbaum**  
Clothes \$15-\$20-\$25  
The Greatest Clothes Values in America



Copyright, 1913, A. B. Kirschbaum Co.

## THESE SUITS HAVE AN EXCLUSIVE STYLE

Every Spring and Summer Model in our stock is created exclusively for Kirschbaum by world-famous fashion authorities. As a result, all our styles show the keen individuality and taste that are appreciated by the man of fashion. Guaranteed pure, all-wool fabric—London-shrunk, expert hand-tailoring throughout, and fit—as well as latest correct style. For an ideal warm weather suit, of unequalled value, style and comfort—examine our Kirschbaum \$18 Special Blue Serge. Guaranteed unfadable.

## Very Serious

It is a very serious matter to ask for one medicine and have the wrong one given you. For this reason we urge you in buying to be careful to get the genuine—

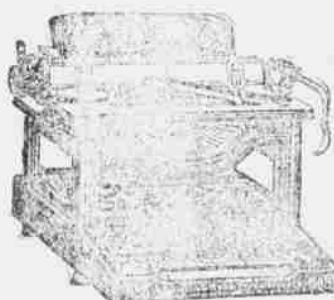
**THE FORD'S**  
**BLACK-DRAUGHT**  
Liver Medicine

The reputation of this old, reliable medicine, for constipation, indigestion and liver trouble, is firmly established. It does not irritate other medicines. It is better than others, or it would not be the favorite liver powder, with a larger sale than all others combined.

SOLD IN TOWN

## The "SILENT SMITH"

—Model 8 shows what should now be expected of a typewriter.



Ball Bearings; Long Wearing

The success of the L. C. Smith & Bros. Typewriters has been due to the fact that the wants of the user have dictated its construction. The user has decided in favor of certain improvements now incorporated in Model 8. Among them are:

**Silence of Operation**—The most silent running efficient typewriter ever placed on the market. Absolute silence has been very nearly attained.

**Decimal Tabulator**—A help in billing and calculating. There is no extra charge for this convenience.

**Variable Line Spacer**—Enables the operator to start on a given line and space from point of starting; also to work on ruled lines whose spacing varies from repetition spacing. A great help in card work.

**Faster Ribbon Feed**—Insures new place of impact for each typeface.

**Choice of Carriage Return**—Upon special order the new left hand carriage return will be furnished in place of the right hand return.

All the important features of previous models have been retained—ball bearing carriage, typebars and capital shift, back spacer, key-controlled ribbon, removable platen, protected type, flexible paper feed and automatic ribbon reverse.

Write for New Catalog of Model 8. It will explain the L. C. Smith & Bros. Typewriter is a synonym for superior service.

**L. C. SMITH & BROS. TYPEWRITER COMPANY**  
Factory and Home Office, SYRACUSE, N. Y., U. S. A.

7164 Champa St.

DENVER, COLO.

# THE BE EN NEW

TAKE this opportunity to inform its Customers that it has enlarged its Plant which will enable Us to accommodate the growing demand for all kinds of Job Work and Commercial Printing.

Satisfaction  
Guaranteed.

Belen, N. M.



# Serving in a World at War

We are doing our utmost to serve the public as satisfactorily today as we did before the war upset the commercial world.

In the face of greatly increased costs of material we are endeavoring to maintain our plant at the highest point of efficiency.

Despite the high cost of labor, we are maintaining full crews that there may be no part of the work slighted or neglected.

While the demands of the signal service of our armies have deprived us of many technically trained men, those who remain have spread out to fill the gaps by extra effort.

In some places congestion has occurred because we have been unable to secure equipment for relief, but in such cases the traffic is being handled to the full extent of human ability.

With the world rocking under the weight of war; with economic conditions unsettled and abnormal, we are striving always to coordinate our efforts to the great problems involved in the winning of the war.

We feel that uninterrupted, efficient telephone service is playing a conspicuous part in the forces that will bring ultimate victory.

**The Mountain States Telephone & Telegraph Co.**

## The FISK Smile

—the smile of tire satisfaction. This man has found a manufacturer he likes to do business with, who fulfills all his ideas of what a concern should be in its policy and methods. The company that makes

# FISK TIRES

stands back of every Fisk dealer to see that every user gets his full money's worth in mileage and tire satisfaction.



Fisk Tires For Sale By

## EVER MEET THIS MAN?

The fellow that listens to all the stock salesmen who want to sell stocks in exchange for Liberty Bonds, has only to go on listening long enough, and one of them will offer to sell him the State Capitol for \$100. Tell these fellows, "I don't know you, but I do know Uncle Sam. Keep your Liberty Bonds, Sam."

## FREE TO FARMERS SEEDS

By special arrangement the Ratekin Seed House of Shenandoah, Iowa, one of the oldest, best established seed firms in the country will mail a copy of their Illustrated Seed Catalogues. This book is complete on all farm and garden seeds. It tells how to grow big yields and at about the best varieties of corn for your locality; also Seed Oats, Wheat, Barley, Speltz, Grasses, Clovers, Alfalfa, Pasture and Lawn Mixtures, Seed Potatoes and all other farm and garden seeds. It is worth dollars to all in want of seeds of any kind. IT'S FREE to all our readers. Write for it today and mention this paper. The address is RATEKIN'S SEED HOUSE, Shenandoah, Iowa.

Join a that ache, muscles that are drawn or contrated should be treated with BALLARD'S SNOW LINIMENT. It penetrates to the spot where it is needed and relieves suffering. Price 25c. 50c. and \$1.00 per bottle. Sold by all dealers

Ask for Catalog

For FRECKLES Blackheads, Pimples and all discolorations of the skin use MRS. GRAHAM'S Bleaching Cream Price 75c. by Mail

Service Graham

## SUNKIST CACTUS COM POUND for the Skin, For sale by Leading Druggists.

A scald, burn, or severe cut heals slowly if neglected. The family that keeps a bottle of BALLARD'S SNOW LINIMENT on hand is always prepared for such accidents. Price 25c. 50c. and \$1.00 per bottle. Sole by all dealers.

There is more Catarrh in this section of the country than all other diseases combined. Catarrh is a constitutional disease, it is incurable. Catarrh is a local disease, it is curable. Catarrh is a constitutional disease, it is incurable. Catarrh is a local disease, it is curable. Catarrh is a constitutional disease, it is incurable. Catarrh is a local disease, it is curable.

## THE UNIVERSITY OF New Mexico.

AT ALBUQUERQUE

OPENS

AUGUST

22ND.

FOR THE COLLEGE YEAR 1916-1917

AMPLE TIME REMAINS TO ARRANGE FOR ENTRANCE.

PROSPECTIVE students wishing to arrange for accommodations, or desiring information of any kind regarding attendance may write, telegraph or telephone. ADDRESS:

The President's Office  
UNIVERSITY of NEW MEXICO  
Albuquerque, N. M.

Dependable Merchandise of Every Kind.  
The Store Where Your Dollars Go Farthest

This space is

open for an

ADVERTISE

MENT

## Oh, You Skinny!

Why stay thin as a rail? You don't have to! And you don't have to go through life with a chest that the tailor gives you; with arms of childish strength; with legs you can hardly stand on. And what about that stomach that flinches every time you try a square meal? Are you a pill-feeder?

DO YOU EXPECT HEALTH AND STRENGTH IN TABLOID FORM... THROUGH PILLS, POSITIONS AND OTHER EXPROTRIED PIFFLE? YOU CAN'T DO IT; IT CAN'T BE DONE.

The only way to be well is to build up your body—all of it—through nature's methods—not by pampering the stomach. It is not fate that is making you a failure: it's that poor, emaciated body of yours; your half-sickness shows plain in your face and the world loves healthy people. So be healthy—strong—vital. That's living. Don't think too long; send 4 cents in stamps to cover mailing of my book, "INTELLIGENCE IN PHYSICAL CULTURE," written by the strongest physical culture instructor in the world.

LIONEL STRONGFORT

PHYSICAL CULTURE EXPERT

DEPT. N. M. ATLANTIC CITY, N. J.

Wedeliver your message promptly  
Try the BELEN NEWS.



We are doing our utmost to serve the public as satisfactorily today as we did before the war upset the commercial world.

In the face of greatly increased costs of material we are endeavoring to maintain our plant at the highest point of efficiency.

Despite the high cost of labor, we are maintaining full crews that there may be no part of the work slighted or neglected.

While the demands of the signal service of our armies have deprived us of many technically trained men, those who remain have spread out to fill the gaps by extra effort.

In some places congestion has occurred because we have been unable to secure equipment for relief, but in such cases the traffic is being handled to the full extent of human ability.

With the world rocking under the weight of war; with economic conditions unsettled and abnormal, we are striving always to coordinate our efforts to the great problems involved in the winning of the war.

We feel that uninterrupted, efficient telephone service is playing a conspicuous part in the forces that will bring ultimate victory.

AT ALBUQUERQUE

OPENS

AUGUST  
1987 VOL. 15 NO. 6

22ND.

FOR THE COLLEGE YEAR 1916—1917

AMPLE TIME REMAINS TO ARRANGE FOR ENTRANCE.

**P**ROSPECTIVE students wishing to arrange for accommodations, or desiring information of any kind regarding attendance may write, telegraph or telephone. ADDRESS:

The President's Office  
UNIVERSITY of NEW MEXICO  
Albuquerque, N. M.

This space is

open for an

## ADVERTISE

MENT

## Oh, You Skinny!

Why stay thin as a rail? You don't have to! And you don't have to go through life with a chest that the tailor gives you; with arms of childish strength; with legs you can hardly stand on. And what about that stomach that flinches every time you try a square meal? Are you a pill-feeder?

DO YOU EXPECT HEALTH AND STRENGTH IN TABLOID FORM--  
THROUGH PILLS, POSITIONS AND OTHER EXPOTRIED PIFFLE? YOU  
CAN'T DO IT; IT CAN'T BE DONE.

The only way to be well is to build up your [body—all of it]—through nature's methods—not by pampering the stomach. It is not fate that is making you a failure: it's that poor, emaciated body of yours; your half-sickness shows plain in your face and the world loves healthy people. So be healthy—strong—vital. That's living. Don't think too long: send 4 cents in stamps to cover mailing of my book, "INTELLIGENCE IN PHYSICAL CULTURE," written by the strongest physical culture instructor in the world.

LIONEL STRONGFORT

PHYSICAL CULTURE EXPERT  
DEPT. N. M. ATLANTIC CITY, N. J.

Wedeliver yourmessage promptly  
Try the BELEN NEWS.

—the smile of tire satisfaction. This man has found a manufacturer he likes to do business with, who fulfills all his ideas of what a concern should be in its policy and methods. The company that makes

stands back of every Fisk dealer to see that every user gets his full money's worth in mileage and tire satisfaction.



### Fish Tires For Sale By

EVER MEET THIS MAN?

The fellow that listens to all the stock salesmen who want to sell stocks in exchange for Liberty Bonds, has only to go on listening long enough, and one of them will offer to sell him the State Capitol for \$100. Tell these fellows, "I don't know you, but I do know Uncle Sam."

## PRICE TO FARMERS SEEDS

I have just arranged to publish "Rural  
 Science Digest of Minnesota" for the year  
 1900. It contains all the best articles  
 on the country here published.  
 Editors of Seed Catalogs  
 are requested to send me  
 all the new varieties of  
 plants and stock for  
 1900. I will be glad to  
 send you a copy of the  
 book at once. Send me  
 your list of new varieties of  
 plants and stock for 1900.  
 Special attention is given to  
 all other fruits and garden crops. This  
 book is worth a trial to all in want of  
 seeds of any kind. It is FREE to all  
 our readers. Write for it today and  
 you will receive it. It is

Joinai that ache, muscles that are drawn or contrated should be treated with BALLARD'S SNOW LINIMENT. It penetrates to the spot where it is needed and relieves suffering. Price 25c. 50c. and \$1.00 per bottle. Sold by all dealers.

SUNKIST CACTUS COM  
POUND for the Skin, For sale  
by Leading Druggists.

A scald, burn, or severe cut  
heals slowly if neglected. The  
family that keeps a bottle of  
**BALLARD'S SNOW LINIMENT**  
on hand is always prepared for  
such accidents. Price 25c. 50c.  
and \$1.06 per bottle. Sole by all  
dealers.

and by continued failure to respond to treatment. It is a disease of the country than all other diseases put together, and for years it was supposed to be incurable. Doctors prescribed local remedies, and by continuing failing really influenced by constitutional conditions. Therefore requires constitutional treatment. Hill's Cherry-Medication, manufactured by E. J. Cheney & Co., Cincinnati, Ohio, has been found to return the blood on the mucous surfaces of the system. One Hundred Dollars reward offered for any case that Hall's Cherry-Medication fails to cure. Send for full particulars.

Hill's Family Pills for Constipation.  
Prepared by DRUGGISTS, ETC.,  
E. J. CHENEY & CO., Toledo, Ohio.

Ask For  
Catalog

Agents  
Wanted

For  
**FRECKLES**  
Blackheads, Pimples  
and all discolorations of  
the skin use  
**MRS. GRAHAM'S  
Bleaching Cream**  
Price 75c. by Mail

Carroll

25 W  
Hend