

## EPOXY TERRAZZOS

THE REVOLUTIONARY HIGH QUALITY FLOOR COVERING



BOTH EAST AND WEST VESTIBULES OF THE NEW UNIVERSITY BASIC MEDICAL FACILITY AT ALBUQUERQUE FEATURE GLEAMING EPOXY TERRAZZO FLOORS.

### EPOXY TERRAZZOS

ARE THE MOST BEAUTIFUL AND FUNCTIONAL FLOOR COVERING YET DEvised. SEAMLESS, GROUND IN PLACE TERRAZZO FLOORS GIVE EVERLASTING WEAR, EASE OF MAINTENANCE AND COLOR AND DESIGN VERSATILITY.

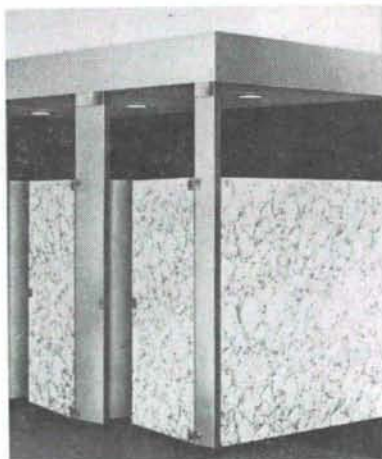
EPOXY TERRAZZO FLOORS ARE NOW AVAILABLE IN CONDUCTIVE FORM FOR USE IN HOSPITAL OPERATING ROOMS OR EXPLOSIVE HAZARD AREAS.

## NEW MEXICO MARBLE AND TILE CO.

414 Second St., S.W. Albuquerque, N. M.  
P. O. Box 834 • Phone 243-5541



## TOILET COMPARTMENTS



- Endless design and pattern possibilities
- Durable, easy to maintain
- Assured local availability ceiling hung, floor mounted or overhead braced

Formica Brand Laminated Plastic is the ideal surfacing material for toilet compartments and other restroom partitions, for the same reason it serves so handsomely on surfaces in other parts of a building.

FORMICA DISTRIBUTOR



PHONE 233-2317  
312 INDUSTRIAL, N. E. P. O. BOX 1098  
ALBUQUERQUE, NEW MEXICO

## new mexico architecture nma

Published bi-monthly, by the New Mexico Society of Architects American Institute of Architects, a non-profit organization, 115 2nd St., S.W., Suite 200, Albuquerque, N. M. 87101.

**Editorial Correspondence:** All correspondence should be addressed to John P. Conron, P. O. Box 935, Santa Fe, New Mexico 87501.

**Editorial Policy:** Opinions expressed in all signed articles are those of the author and do not necessarily represent the official position of the New Mexico Society of Architects, A.I.A.

No responsibility will be assumed by the editor or publishing organization for unsolicited contributions. Return postage should accompany all unsolicited manuscripts.

**Subscription rates:** single copy 50c; one year \$2.50. Second class postage paid at Roswell, New Mexico.

**Change of address:** Notifications should be sent to N.M.A., Box 18, University Station, Albuquerque, N. M. 87106 at least 45 days prior to effective date. Please send both old and new addresses.

**Advertising:** Requests for rates and information relating to advertising should be addressed to W. M. Brittelle, Sr., 115 2nd Street, S.W., Suite 200, Albuquerque, N. M. 87101.

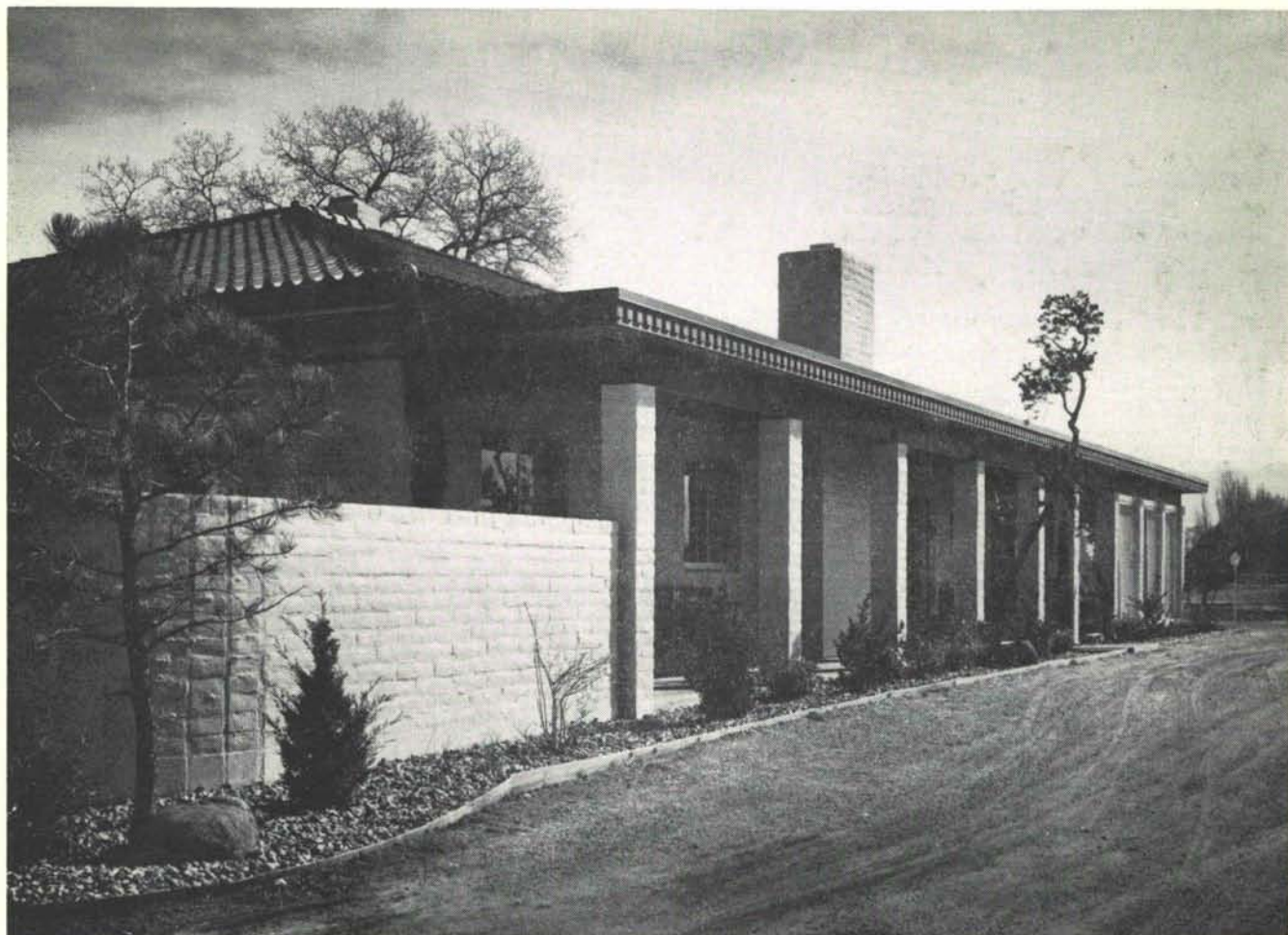
### INDEX TO FIRMS



Cooperating in the public relation program of the NMA magazine, making possible its publication and the page upon which their message may be found.

Albuquerque Gravel Products .....	4
Albuquerque Lumber Co. ....	4
Albuquerque Testing Lab. ....	19
Architectural Carpet Consultants .....	8
Atlas Building Products Co. ....	10
B & B Steel .....	19
Builders Block & Stone Co., Inc. ....	6
Crego Block Co., Inc. ....	23
Design Interiors .....	4
Executone of New Mexico .....	19
Featherlite Tile Company .....	4
Hanley Paint Mfg. Co., Inc. ....	10
Hunter-Hayes Elevator Co. ....	6
Hydro Conduit Corp. ....	24
Keyson Applied Coating, Inc. ....	5
Lumber Merchandisers Association .....	18
McGill, George B. ....	18
New Mexico Pipe Trades .....	10
New Mexico Marble & Tile Co. ....	22
Otto, Edgar D. & Sons, Inc. ....	5
Prestressed Concrete Products, Inc. ....	18
Portland Cement Association .....	2
San Valle Tile Kilns .....	8
Southern Union Gas Co. ....	5
Southwest Vermiculite Co. ....	20
Stryco Sales, Inc. ....	22
University Book Store .....	21





Residence of Gov. and Mrs. John F. Simms, Jr.  
Rio Grande Court, N.W.  
Albuquerque, New Mexico

Miles Brittelle, Jr., A.I.A.  
Architect

Mossman-Gladden, Inc.  
General Contractors  
Albuquerque, N. M.

Riccobene & Kritzer  
Masonry Contractors

Landscaping by Taro

---

### Versatility of "SLUMP BLOCK"

---

Slump Block used throughout. Exterior walls are of cavity wall construction, achieved by the use of 4"x4"x16" units.

Masonry units manufactured and furnished by  
**CREGO BLOCK CO., INC.**

6026 Second St., N.W.

Phone 344-3475

Albuquerque, N. M. 87107

---

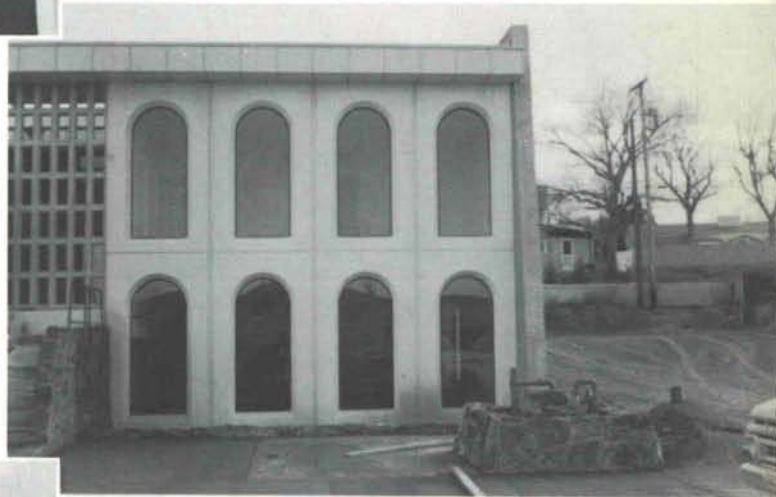
Lillian Dolde, Vice-President  
Albuquerque, National Bank  
Albuquerque, N.M. 87101

Bulk Rate  
U. S. Postage  
**PAID**  
Roswell, N. M.  
Permit No. 47



A FINE EXAMPLE OF THE CLEANLI-  
NESS AND BEAUTY OF PRECAST CON-  
CRETE IS THE CHI OMEGA SORORITY  
HOUSE AT U. N. M., ALBUQUERQUE,  
WHERE HYDRO CONDUIT CORP. FAB-  
RICATED THE ATTRACTIVE PRECAST  
STRUCTURAL WALL SYSTEM.

**THAT'S  
THE  
SYSTEM**



ARCHITECT: CRAWFORD & OROVEC,  
ALBUQUERQUE, N. M.

CONTRACTOR:  
K. L. HOUSE CONSTRUCTION CO.



**HYDRO CONDUIT CORPORATION**

2800 SECOND ST., SW • ALBUQUERQUE, NEW MEXICO 87103