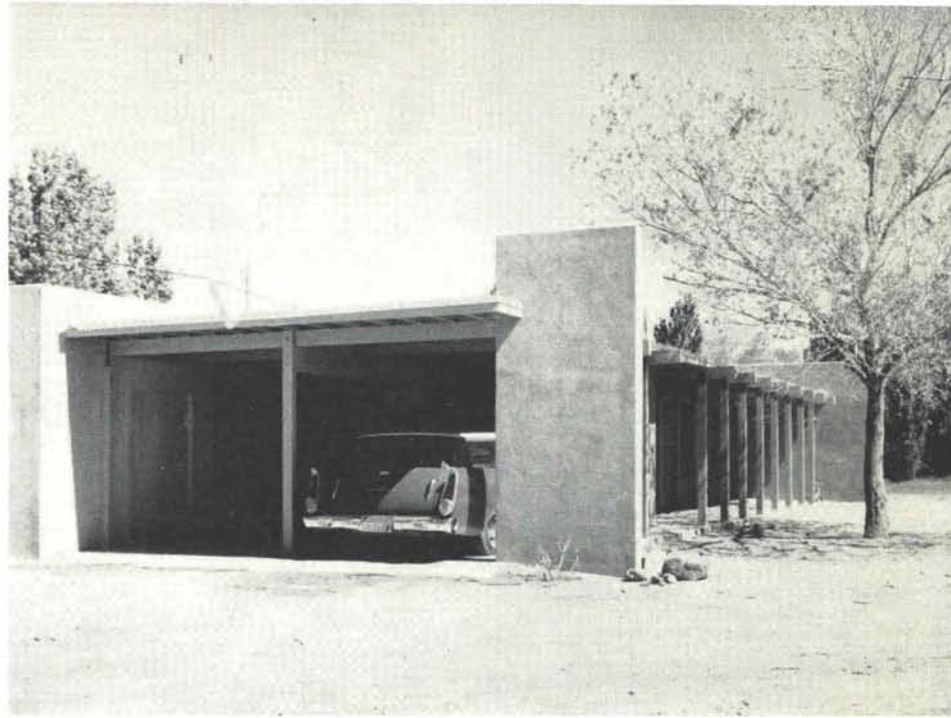


In 1959, Mr. and Mrs. Bremer purchased a ten year old Territorial style house. This was a bold move because the building had not been occupied for over two years and was in very poor condition. However, it had the size and the location that the Bremers were searching for. Their problem, then, was to make this building into a home — a liveable, comfortable, fun-to-be-in home — for their family. The only solution was to renovate the entire house inside and out.

The interior was completely replastered and painted, and tile was installed in the bathrooms. The east wall of the living room received walnut paneling. Partitions were removed or re-located to make the space a nicer place in which to live. A workshop, which had previously been the garage, was remodeled into a family room. What had formerly been a porch, screened on two sides, was converted into a den with glass walls on two sides. Two flush slab doors and a large panel of textured glass create the transition between the den and the living room. The fireplace, which was in an unfortunate location, was removed. Two inefficient floor furnaces were replaced by a central steam heating system with baseboard radiation.

The aesthetic change of the exterior is quite apparent. Most of the drab Territorial appearance was covered with a new coat of stucco, while smaller areas have been covered with vertical wood siding. The traditional Pueblo motif is carried through with a truthful expression of contemporary materials and technology.

The front of the house has been rephrased with the addition of a colonnade to soften the west sun and to provide a carport. At each end of the colonnade, two planes of wall, perpendicular to the plane of the facade, were added to form a pleasing enclosure for the colonnade. This new range of columns is reminiscent of the traditional colonnade, but it is carried out with contemporary details. The interesting play of sun and shadow created by the simple massing of the unadorned walls is an expression of the Indian Pueblo. Where large windows (desirable by people who enjoy contemporary living, but not compatible with traditional Pueblo) were located, the facing material was changed from stucco to wood paneling. This different material with a change in color and texture provides a pleasing transition



**REMODELED RESIDENCE FOR
MR. AND MRS. HENRY M. BREMER
ALBUQUERQUE, NEW MEXICO**

BOEHNING & BOEHNING, Architects and Engineer

from massive stucco area to large glass area. As a result the large windows do not appear to be out of scale with the heavy appearance of the stucco walls.

An economical analysis of this "new" house shows that the Bremers purchased the old house, the acre of land that it sits on, and completely remodeled the house for a total cost of about \$24,000.00. Since the house now contains 2,600 square feet of floor space, their total investment amounted to \$9.23 per square foot. Future plans call for remodeling the kitchen and installing a prefabricated fireplace in the den. Photography A. W. Boehning, Jr.

