



# THE CENTERLINE SOUTH

SANDOVAL, N. M.



**ARCHITECTS**  
JOHN P. CONRON  
DAVID DERYCK LENT

**STRUCTURAL**  
WOOD & DELAPP

**MECHANICAL**  
JAMES L. BREESE, III  
ROBERT E. JENSEN

**PHOTOGRAPHS**  
JEAN RODGERS OLIVER



**Problem:** A leaky-roofed, leaning adobe garage was to be remodeled into a contemporary gift and furniture store as a branch of the Santa Fe Centerline, Inc.

**Structure:** A buttress system employing exterior masonry pilasters and inside wooden posts was devised to stabilize the leaning adobe walls. Existing wood trusses were railed and reinforced. From these an insulated accoustical ceiling was suspended. Illumination was provided by fixed fluorescent panels and Troler ducts for adjustable incandescent spots. A new brick floor was laid in sand over existing oil-stained and chipped concrete. Further improvements included a new aluminum roof, refrigerated air and a heating system.



**Facade:** The old opening to the garage was filled with double glass doors. This opening was also provided with a sliding barn door of wood to protect the glass from possible vandalism. A portico of carefully detailed wood members retains the pitch of the original roof.

**Rear patio:** Glass doors at the rear of the show room open on a walled rear patio and reveal a fine view of the mountains. Recently opened, the show room will soon be supplied with additional display cubes and an eight-foot - high, free - standing, storage-display partition.



## Introducing the new "SLUMPROK" created by CREGO



Available in —  
Sandstone, Adobe, Gray and Terra Cotta

A new masonry product (Hollowcore) allowing a double faced wall with *soft shadows and highlights*.

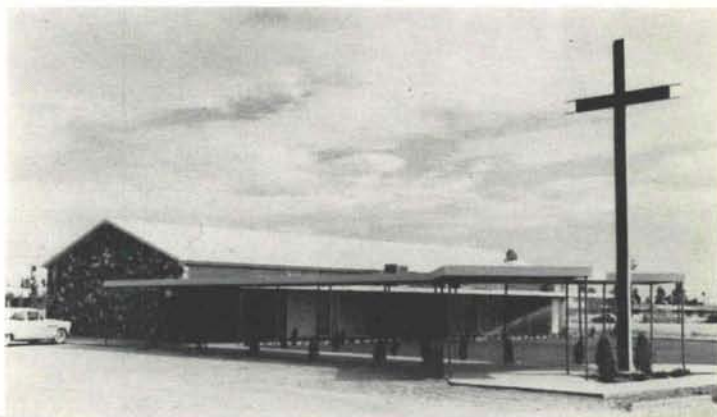
These blocks meet and surpass all ASTM and minimum code requirements

**CREGO BLOCK CO., Inc.**  
6026 Second NW DI 4-3475  
Albuquerque, New Mexico

——  
Makers of the finest autoclave products in New Mexico

**Specify Butler** when the requirement is to design an appropriately functional and beautiful structure on a low budget. Butler steel components are pre-engineered to AISC and AISI requirements.

Good Shepherd Evangelical Lutheran Church  
4935 Hondo Pass, El Paso



AGUIRRE AND ASSOCIATES, ARCHITECTS

THE **BANES** COMPANY INC.

ALBUQUERQUE • EL PASO  
HOBBS • FARMINGTON  
PHOENIX • TUCSON

