



**THE  
CENTERLINE,  
INC.**



**SANTA FE, N. M.**

**ARCHITECTS**  
JOHN P. CONRON  
DAVID DERYCK LENT

**STRUCTURAL**  
WOOD & DELAPP

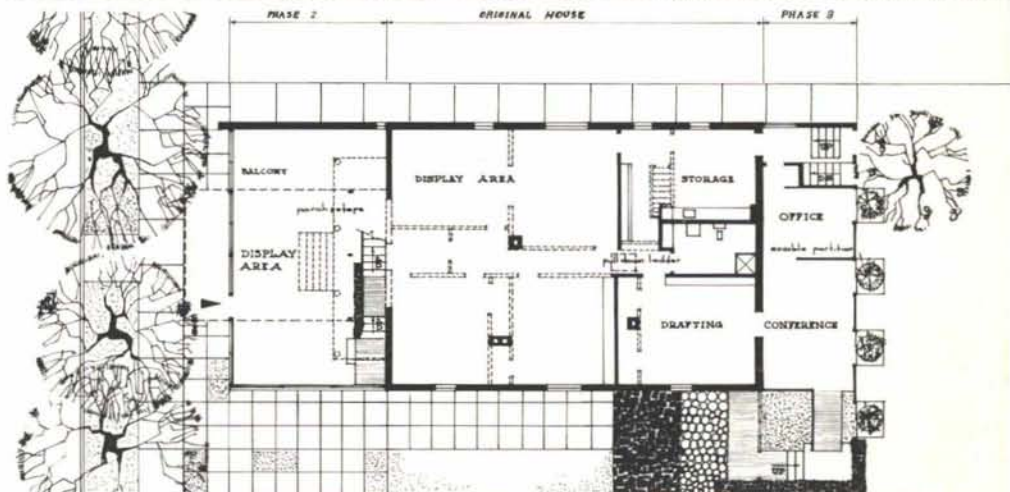
**MECHANICAL**  
JAMES L. BREESE, III  
ROBERT E. JENSEN

**PHOTOGRAPHS**  
JEAN RODGERS OLIVER

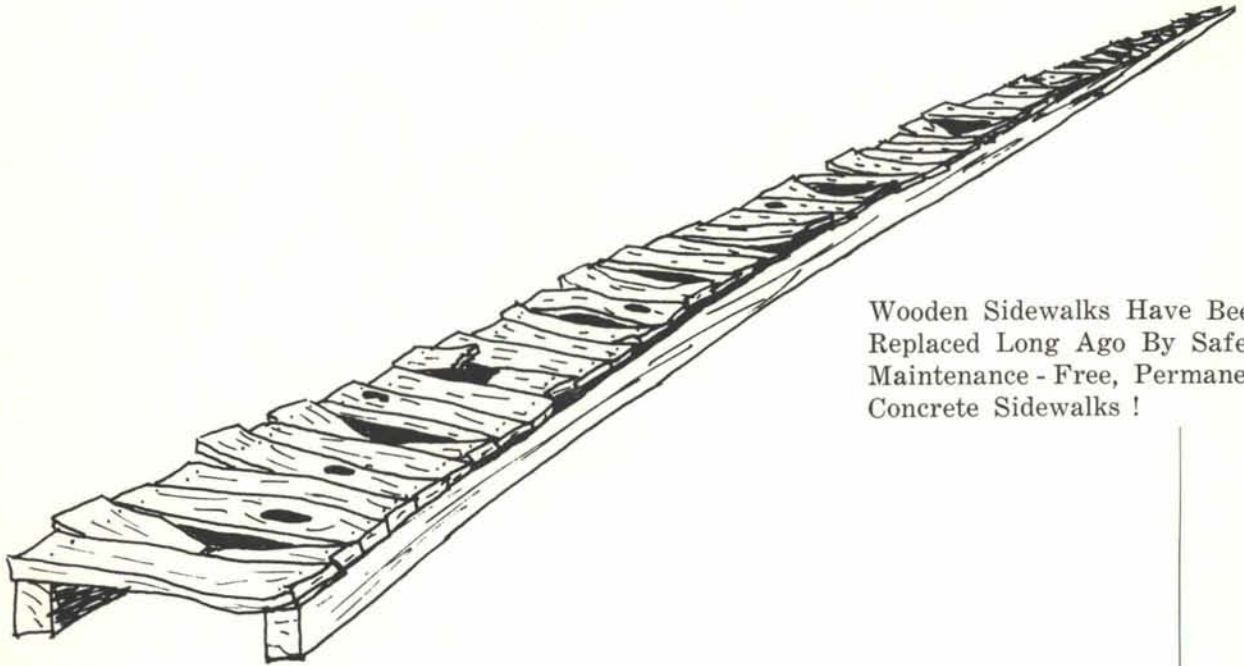
This modern store was one of ten buildings selected for the first **Contemporary Architects of New Mexico** travelling exhibit in 1959. Beginning with a house built in 1910, a typical Midwestern, brick veneer, one-story structure with wooden porches front and back, the renovation was done in three stages.

**PHASE 1** of the remodeling (1954), consisted of inserting three steel beams the full length of the building to support the attic and roof. Supported by the exterior walls and interior built-up square steel columns, these beams permitted the removal of any of the load-bearing interior partitions.

**PHASE 2** started immediately upon completion of the above. The front porch, with its white Doric columns was removed, and the twenty-one foot deep extension was erected. Built at street level, this addition was to be used for display of merchandise as was over half the floor space of the original house. The balcony in the extension was to serve as the design office until additional office space could be provided at a later date. The heating system of the old



# What Happened To Wooden Sidewalks?



Wooden Sidewalks Have Been Replaced Long Ago By Safe, Maintenance - Free, Permanent Concrete Sidewalks !

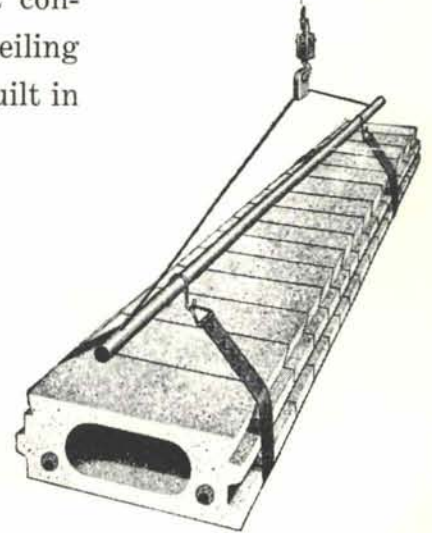
SIMILARLY —

The Progressive man "Who Thinks Things Out" is using **RAPIDEX**®. Floor and roof system on his construction programs.

**RAPIDEX**® is a fast erecting, lightweight concrete, single member slab system that provides a flush ceiling and level deck, offers low-cost, fire-safe construction, has built in accoustics and insulation and is maintenance-free —

FOR CONSULTATION:

Call or Write: BOB JANSSON,  
Sales Manager



**RAPIDEX**® DIVISION OF

LAVALAND HEIGHTS BLOCK CO., inc.

515 COORS BLVD., S.W.

ALBUQUERQUE, N. M.

CH 7-0423

residence was augmented by a new boiler for the front extension, the heat being delivered by radiant system copper pipes imbedded in the concrete slab under the brick floor and in the two plastered railings of the balcony.

**PHASE 3**, the design office, was undertaken in the Spring of 1961. Since the completion of Phases 1 and 2, the Architectural Control Ordinance was passed in Santa Fe (see **NMA** Nov.-Dec., 1960). The new addition, therefore, had to have the approval of the Historic Style Committee. The drawings were approved partially on the grounds that anything would be an improvement to the existing rear.

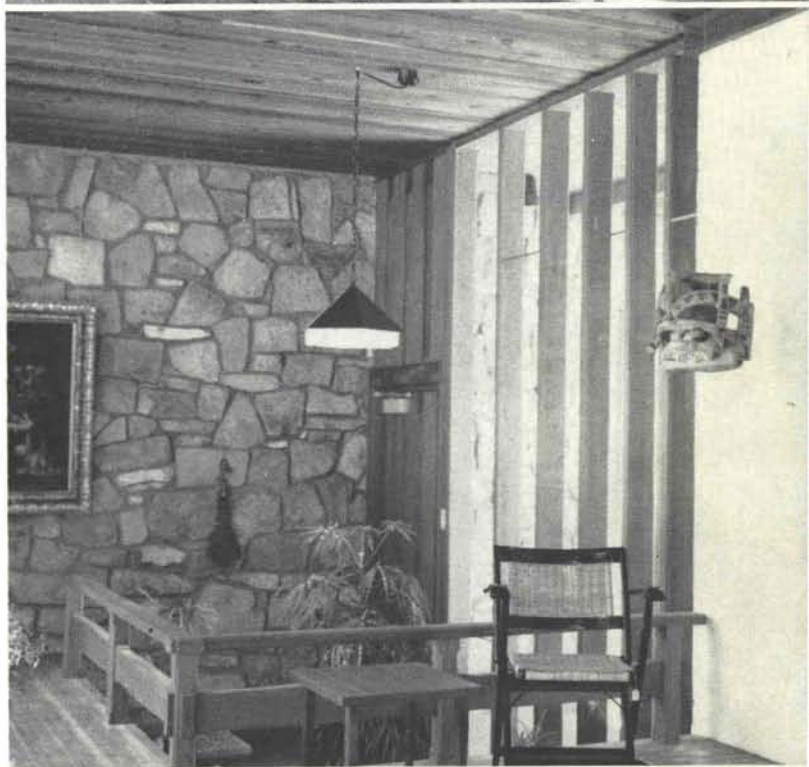
The old porch was completely removed and replaced by a natural finish, redwood and stone structure. The stone was secured from the recently razed state penitentiary in Santa Fe. The roof is built-up flooring over a solid two-by-four redwood decking. The flooring is two-by-four fir decking with a one-eighth inch space between; the heat rises through this space from four-inch by four-inch radiation suspended below this decking. The floor extends three feet six inches beyond the sliding glass windows to form a platform for redwood planter boxes.

The cover photograph shows the entry portal to the design office (phase 3).

Interior Display Room



Interior Design Office



Interior Design Office

