



RESIDENCE

Mrs. Julia P. Meardon
Santa Fe, New Mexico

ARCHITECT

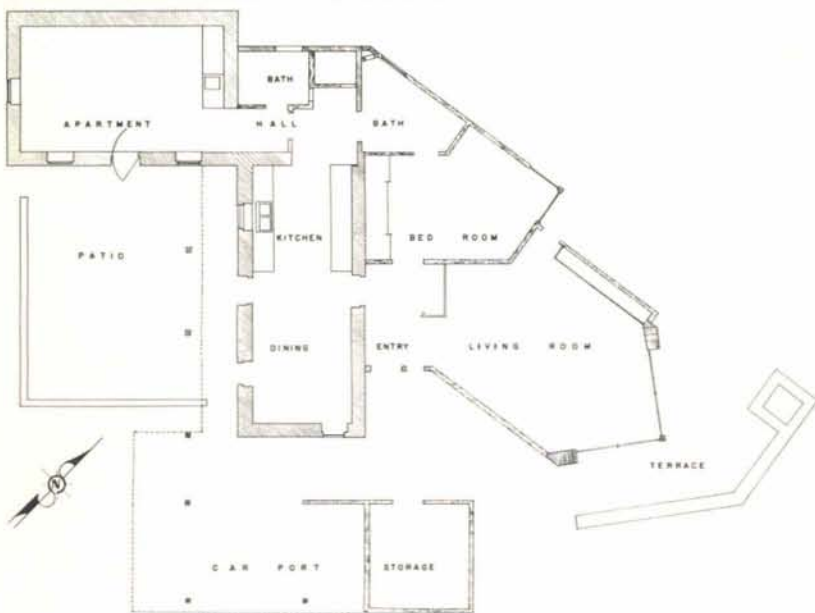
Robert E. Plettenberg



Garcia Street runs in a southeasterly direction from the Santa Fe Plaza winding up a shallow valley towards the Mountain of the Sun. Located about half way along its route, just after it crosses the *acequia madre*, is the Garcia Street Club, a privately founded and partially endowed neighborhood children's meeting place. The Club is open the year around with complete playground facilities, records, books, painting classes, et cetera, for children too young to go to school.

Next door, stood an old three-room adobe building, vacant for years, the property overgrown with weeds, an eyesore on the street and a potential hazard for the small children.

Mrs. Julia Meardon, with limited capital and unlimited goodwill, decided she wanted to devote much of her free time to music lessons for the



children who attend the Club. However, due to a recurring physical disability and recognizing the limited travel abilities of the children, she realized that to make her piano, harpsichord and recorder lessons available to them she would have to live next to the Club.

Thus a "project" was born . . .

Another facet of the already musically oriented project was the need for accommodations for instrument groups of five or six that play together and for easy seating for an audience of as many as thirty. Still, it was necessary that the house be easily kept and intimate enough to be in scale for a woman living alone.

The property lines were close and restricting; thus, the shape of the lot determined the shape of the house. The doors had to be wide enough and cabinets low enough for possible future use from a wheelchair, and the floors had to be vinyl surfaced and on a continuous level from inside to outside, with the car storage equally accessible from either the kitchen door or guest entry.

—Robert E. Plettenberg

LEGGETTE - BRYANT, Inc.

Albuquerque

- Acoustical Contractors and Distributors
- Zonolite Insulating Roof Decks
 - Asbestospray Fireproofing and Acoustical
 - Pella Wood Folding Doors and Partitions
 - Movawall Movable Partitions
 - Lemlar Sun Control Louvres
 - Cepco Translucent Ceilings

DEPENDABLE AND BONDABLE

Chapel 3-7845

COMMON
BRICK
FACE
BRICK

HOLLOW
STRUCTURAL
TILE
SCR and HOLLOW
BRICK

distributors for

acme
BRICK COMPANY

samples & literature
on request

KINNEY BRICK
COMPANY, INC.

P. O. Box 86
Ph. TRinity 7-1130
Office at Brick & Tile Works
5 Miles South on Second Street
Albuquerque, New Mexico

America's Great Name in
QUALITY DOORS...

F. H. A. TERMS
Small monthly payments
if desired. Completely
installed and serviced
by expert workmen.



—ANNOUNCEMENT—

We are most fortunate in being selected as Distributors, in our area, of the Overhead Door Mfg. Co.

Oldest and largest overhead door manufacturers in the United States.

OVERHEAD DOOR COMPANY
of Albuquerque Division of

WELCH-ERWIN CORPORATION

P. O. Box 681

Ph. 243-6638

Albuquerque, New Mexico

FOR
AUTOCLAVED
CONCRETE
BLOCKS
CALL OR SEE
**WESTERN
EMPIRE
BUILDERS
SUPPLY**



1802 CERRILLOS RD.
SANTA FE, N. M.
YUCCA 2-2646

**ALBUQUERQUE
TESTING
LABORATORY**

Sub-soil Investigations
For Structural and Dam Foundations
Two Drills and Crews now
available for Prompt Service
Laboratory Analysis and
Evaluation of Construction Materials

532 Jefferson St., N.E. — P. O. Box 4101

Phones AL 5-8916
AL 5-1322

Albuquerque
New Mexico

*at
your
service*

Blue Prints
White Prints
Photocopies
Architects Supplies
Engineers Supplies
Pickup & Delivery

*Blue Streak
Reproductions*

417 4th N.W.
CH 7-9565

128 Quincy N.E.
AL 5-8606

**BUILDERS! CUT COSTS!
PROVEN STRENGTH —
SELECT LUMBER**

**AUTHORIZED
FABRICATOR**

SANFORD
Gri-P-late
ROOF TRUSSES

Call or Write for Details
FRIENDLY FOLKS • FOLD-THRU SERVICE

BROADWAY LUMBER CO.

425 BROADWAY NE
ALBUQUERQUE CH 2-5221

BILL DING