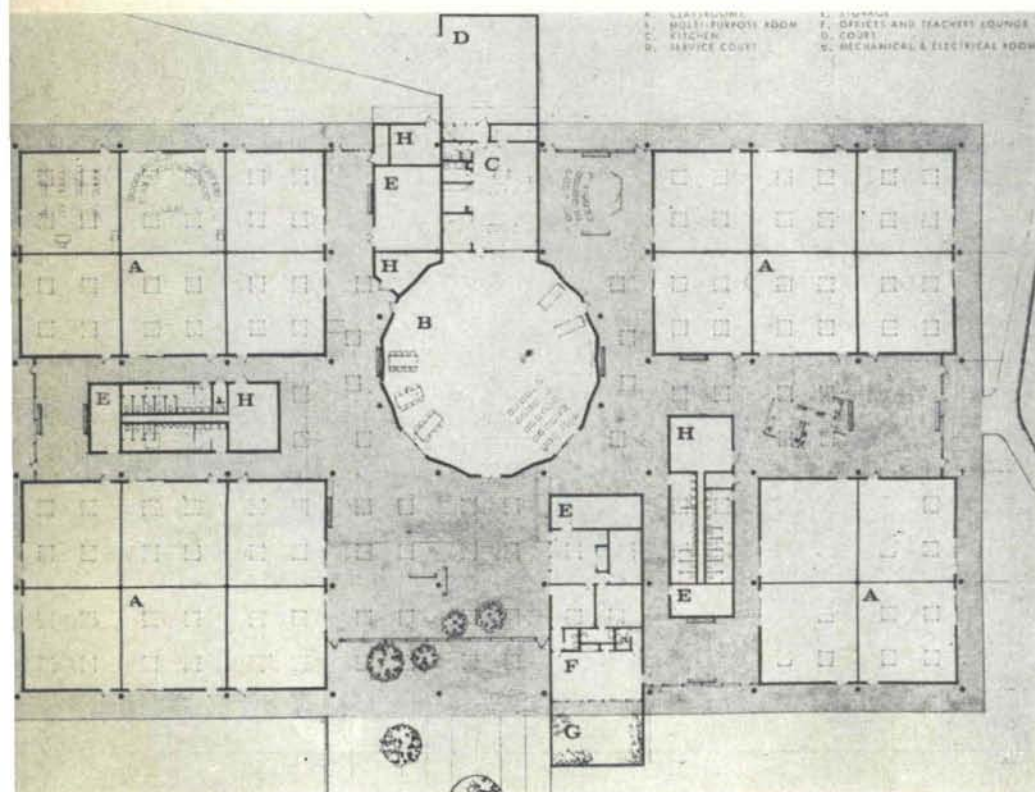


# ACOMA SCHOOL

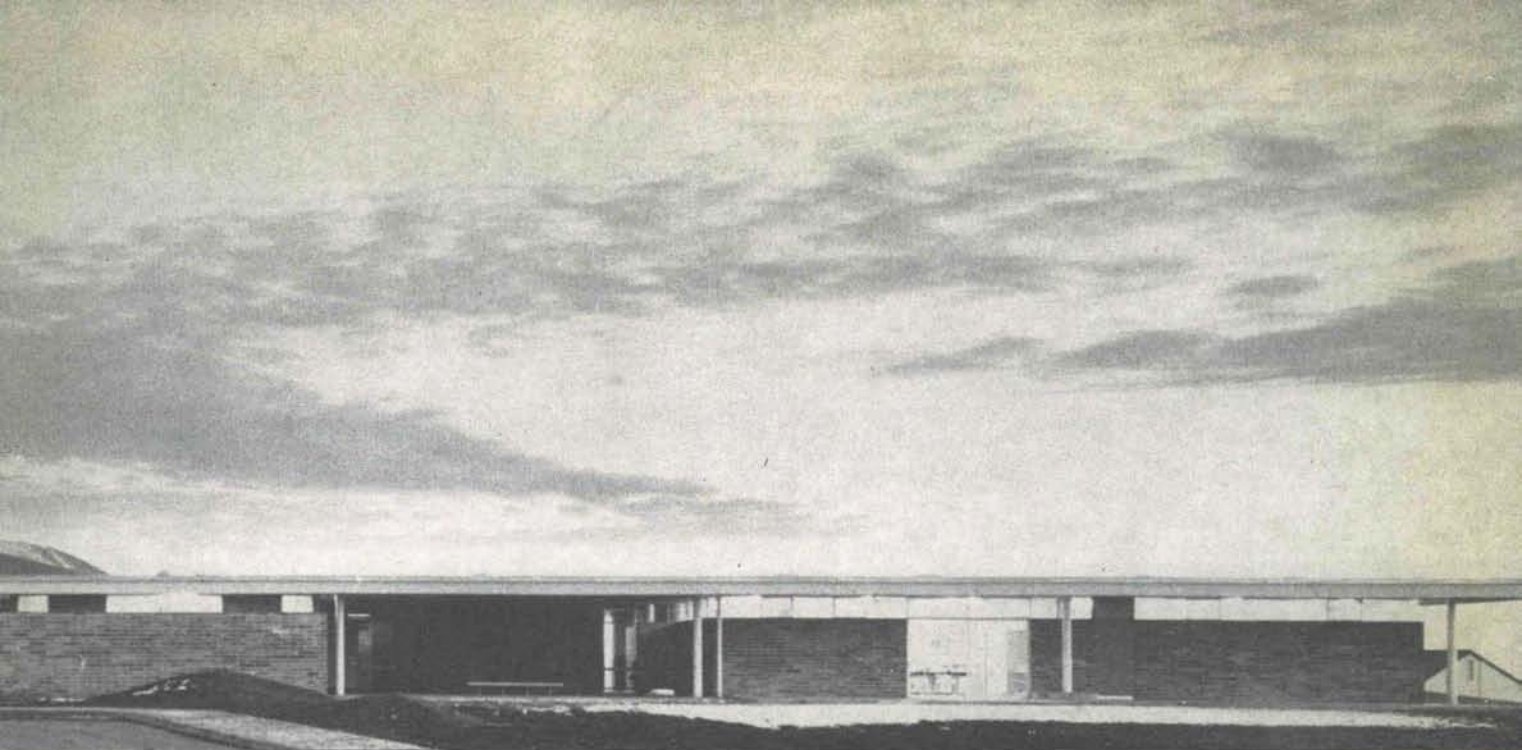
ALBUQUERQUE

NEW MEXICO



In June, 1960, Acoma school received an honorable mention citation from *Overview* magazine in its "Ninth Annual Competition for Better School Design". The jury commented on its freedom for motion, ease of maintenance, and its inviting adaptation to the warm southwest climate. These qualities were also a part of the early design concepts of the architects. Besides providing the maximum number of classrooms on a limited budget, the designers sought to retain some qualities of human scale and experience.

Twenty-two identical classrooms were arranged in four islands at the corners of the plan. Other islands included the mechanical and rest room facilities, the offices and multipurpose room located in the center of the building. The area between the islands is



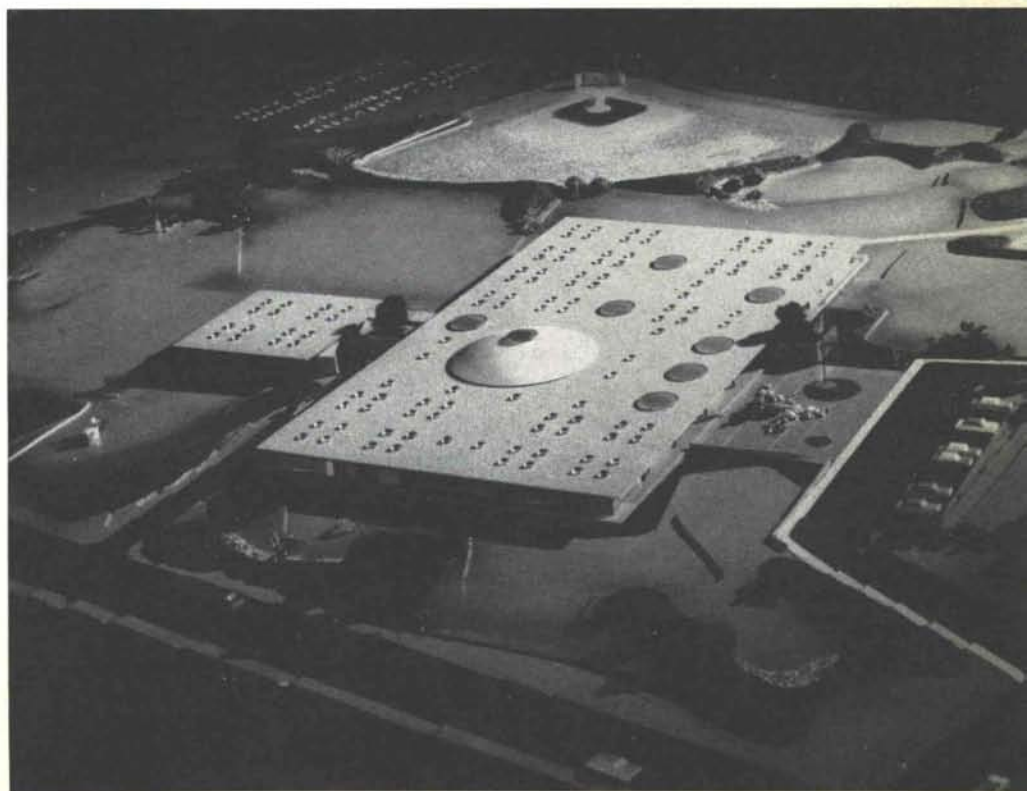
## FLATOW MOORE BRYAN & FAIRBURN

ARCHITECTS

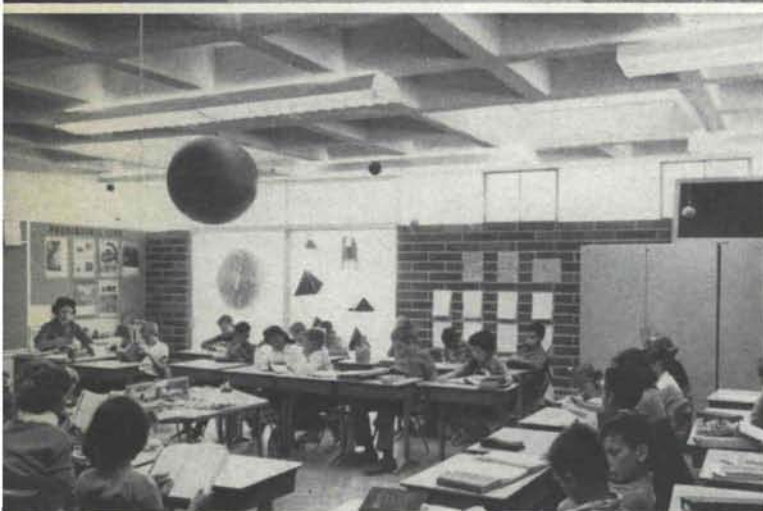
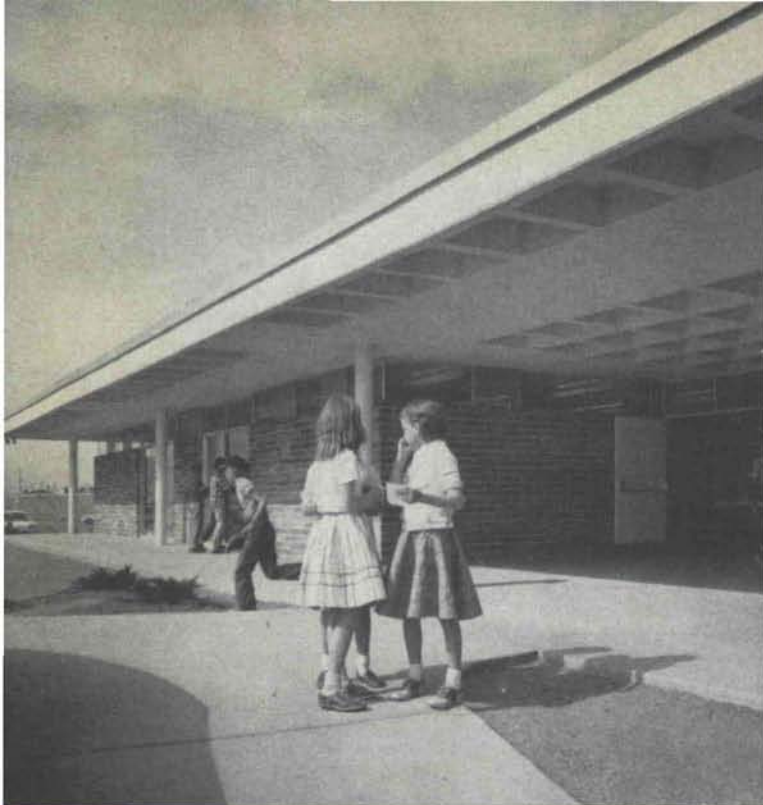
used as corridors, display spaces, playrooms, discussion spaces and other purposes that the teachers and students create. The typical barren school corridor is thus avoided. Especially nice is the faculty lounge with its completely private walled patio.

The act of walking through the school is a pleasant experience of expanding and changing space, contrasting textures and variation. Sheltered by the hovering plane of the vast roof, one still never loses contact with the outside. At times the barrier is only a screen of glass or sliding glass doors; in other areas there is a narrow but continuous glass ribbon set above the concrete block curtain wall.

The 45,000 square feet lift-slab roof is lighted by the use of cardboard pans with skylights bringing natural







light into the center of the building. The multi-purpose room is covered by a conical dome which was cast and lifted integrally with the rest of the roof slab.

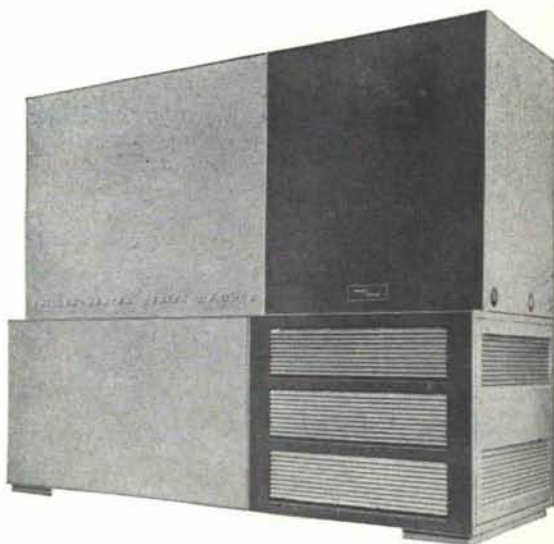
PHOTOGRAPHS BY DICK KENT



# A MAJOR BREAKTHROUGH IN COOLING & HEATING

## ARKLA'S NEW 25-TON GAS CHILLER-HEATER

Here it is—the revolutionary new Arkla absorption unit that heats and cools without a steam producing boiler or converter. Gas-fired burners in the generator section energize the system for absorption cooling, or for heating. It's the perfect system for modern year 'round gas air conditioning.



INSTANTLY HEATS AND COOLS AUTOMATICALLY ■ HEATS WATER WITHOUT A BOILER ■ COOLS WATER WITHOUT A COMPRESSOR ■ REQUIRES NO LUBRICATION ■ SEALED FOR LIFE, REQUIRING MINIMUM MAINTENANCE ■ MAINTAINS SAME CAPACITY FOR THE LIFE OF THE UNIT ■ HAS NO MOVING PARTS IN THE HEATING AND COOLING CYCLE ■ FIRST MEDIUM OR LARGE TONNAGE AIR CONDITIONER THAT HEATS. Truly revolutionary . . . investigate for your next building project the new Arkla DF-3000 Gas-fired All Year® Chiller-Heater.

FOR DETAILS CONTACT YOUR LOCAL GAS COMPANY  
OR WRITE ARKLA AIR CONDITIONING CORPORATION  
812 MAIN STREET • LITTLE ROCK, ARKANSAS

**ARKLA**  *Seruel*